

V&V Reference Report

L2 ASCDS Version : 7.6.9

Observation 61021 - L2 Version 001
Chandra X-Ray Center

L2 Processing Date : Oct 4 2006

Contents

1	Front	2
2	OBI	3
2.1	OBI	3
2.1.1	Images	3
2.1.2	Bias	3
2.1.3	Parameters	4
2.1.4	Events	4
2.2	Compared Parameters	5
2.3	Aspect	6
2.4	Star Slots	8
2.5	FID Slots	8
A	Summary	9
A.1	Status	9
A.2	Comments	9

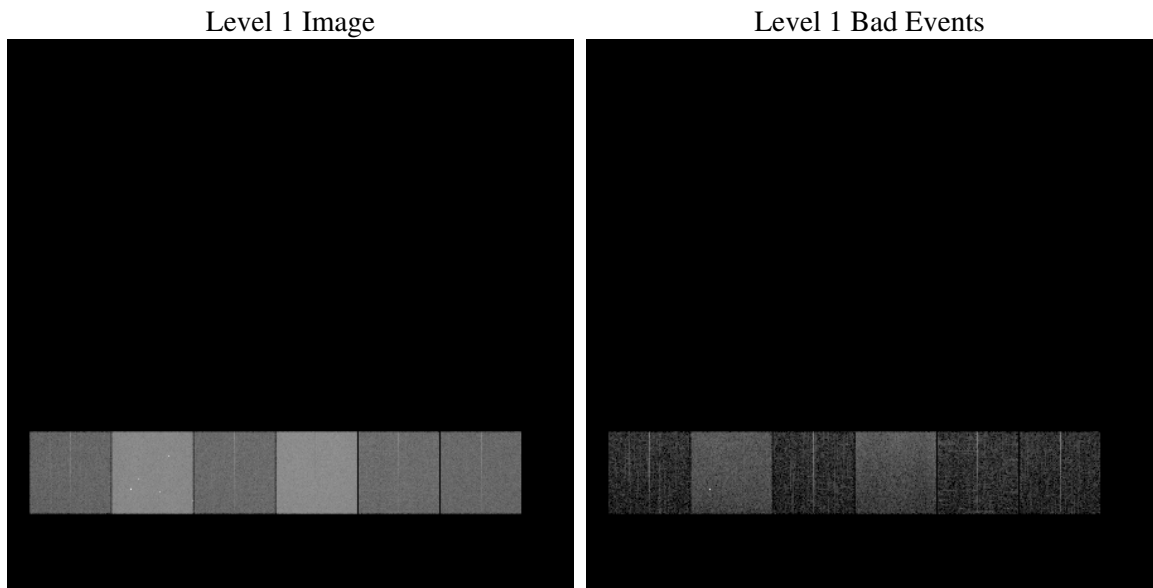
1 Front

seq_num	
obs_id	61021
title	ACIS-456789 diagnostics
observer	CHANDRA engineering request/realtime commanding
object	
dtcycle	0
cycle	P
ra_targ	0.0
dec_targ	0.0
ra_nom	54.638324729983
dec_nom	1.3281804975232
roll_nom	89.58942271825
revision	2
ontime	7707.7349739373
livetime	7610.1349926565
ontime4	2781.443033129
ontime5	7791.9999709725
ontime6	3002.7526669204
ontime7	7707.7349739373
ontime8	3032.0046152174
ontime9	2901.3611241281
l2events	1181571

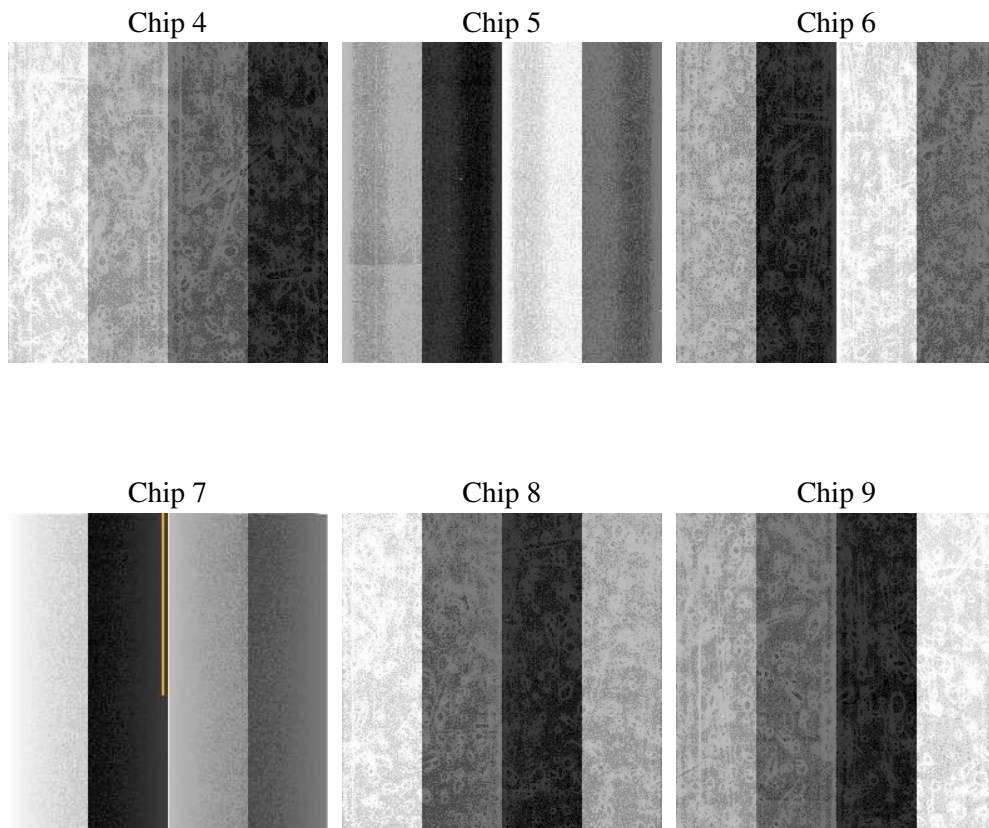
2 OBI

2.1 OBI

2.1.1 Images



2.1.2 Bias



2.1.3 Parameters

obi_num	0
ascdsver	7.6.9
caldsver	3.2.3
date	2006-10-04T21:23:49
revision	2

sched_exp_time	0.0
ontime	7710.3419854343
ontime4	2784.050044626
ontime5	7794.6069824696
ontime6	3004.4390695989
ontime7	7710.3419854343
ontime8	3033.6089379191
ontime9	2903.9681356251
l1events	1435426

2.1.4 Events

	ccd 4	ccd 5	ccd 6	ccd 7	ccd 8	ccd 9
level 1 events	145474	383832	166498	412622	171515	155485
rejected events	21139	61638	21735	52167	24125	21016
rejected %	14%	16%	13%	12%	14%	13%

	ccd 4	ccd 5	ccd 6	ccd 7	ccd 8	ccd 9
grade 0 events	71846	42013	78933	67798	81369	74320
	49%	10%	47%	16%	47%	47%
grade 1 events	479	638	372	165	399	413
	0%	0%	0%	0%	0%	0%
grade 2 events	20093	151791	25164	107514	25796	22984
	13%	39%	15%	26%	15%	14%
grade 3 events	8193	11506	8946	27305	9467	8572
	5%	2%	5%	6%	5%	5%
grade 4 events	8349	11307	9001	27213	9362	8532
	5%	2%	5%	6%	5%	5%
grade 5 events	1401	7850	1588	7041	1833	1573
	0%	2%	0%	1%	1%	1%
grade 6 events	16020	105699	22887	130794	21396	20220
	11%	27%	13%	31%	12%	13%
grade 7 events	19093	53028	19607	44792	21893	18871
	13%	13%	11%	10%	12%	12%

2.2 Compared Parameters

Parameter	Planned	Actual	Parameter	Planned	Actual
Instrument	ACIS	ACIS	Obspar format version number	6	6
Detector	ACIS-456789	ACIS-456789	Obspar file type	PREDICTED	ACTUAL
Grating	NONE	NONE	Obspar update status	NONE	UPDATED
Data mode	FAINT	FAINT	On-chip summing requested	N	N
Observation mode	SECONDARY	SECONDARY	Subarray requested	NONE	NONE
Pointing RA	0	54.63832472998315	Alternating exposures requested	N	N
Pointing Dec	0	1.328180497523169	Primary exposure time	0.000000	3.2
Pointing Roll	0.0	89.58942271825009			
SIM focus pos (mm)	-0.684267	-0.6828225247311905			
SIM defocus (mm)	0	0.8505141146731063			
SIM translation stage pos (mm)	-190.132523	250.466033080201			
SIM translation stage offset (mm)	0	-0.01005468664627074			
Observation start time	149409457.944324	149409456.91961			
Observation start date	2002-09-26T06:37:38	2002-09-26T06:37:36			
Observation end time	149422247.894854	149422246.87014			
Observation end date	2002-09-26T10:10:48	2002-09-26T10:10:46			
Read mode	TIMED	TIMED			

2.3 Aspect

2.4 Star Slots

2.5 FID Slots

A Summary

A.1 Status

V&V Scientist	Jen Lauer
V&V Date (YYYY-MM-DD)	2006.10.05
V&V Edition	1
V&V Disposition and Status	OK
V&V Charge Time	7.70773497

A.2 Comments