

# V&V Reference Report

## L2 ASCDS Version : 7.6.8

Observation 60751 - L2 Version 001  
Chandra X-Ray Center

L2 Processing Date : Aug 1 2006

## Contents

<b>1</b>	<b>Front</b>	<b>2</b>
<b>2</b>	<b>OBI</b>	<b>3</b>
2.1	OBI . . . . .	3
2.1.1	Images . . . . .	3
2.1.2	Bias . . . . .	3
2.1.3	Parameters . . . . .	4
2.1.4	Events . . . . .	4
2.2	Compared Parameters . . . . .	5
2.3	Aspect . . . . .	6
2.4	Star Slots . . . . .	8
2.5	FID Slots . . . . .	8
<b>A</b>	<b>Summary</b>	<b>9</b>
A.1	Status . . . . .	9
A.2	Comments . . . . .	9

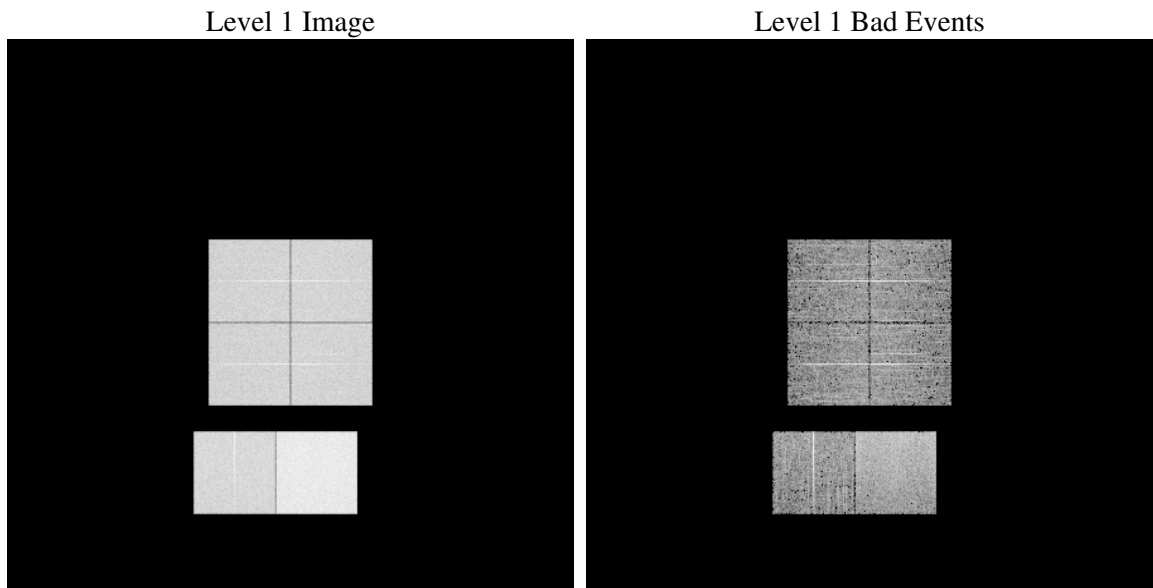
# 1 Front

seq_num	&#160
obs_id	60751
title	ACIS-012367 diagnostics
observer	CHANDRA engineering request/realtime commanding
object	&#160
dtcycle	0
cycle	P
ra_targ	0.0
dec_targ	0.0
ra_nom	283.18012938964
dec_nom	-17.578600210773
roll_nom	98.649420702001
revision	2
ontime	7436.1006325185
livetime	7341.9402488273
ontime0	4308.5947263539
ontime1	4389.6605119109
ontime2	4172.5550080836
ontime3	4221.0051329136
ontime6	4587.4435524046
ontime7	7436.1006325185
l2events	1116043

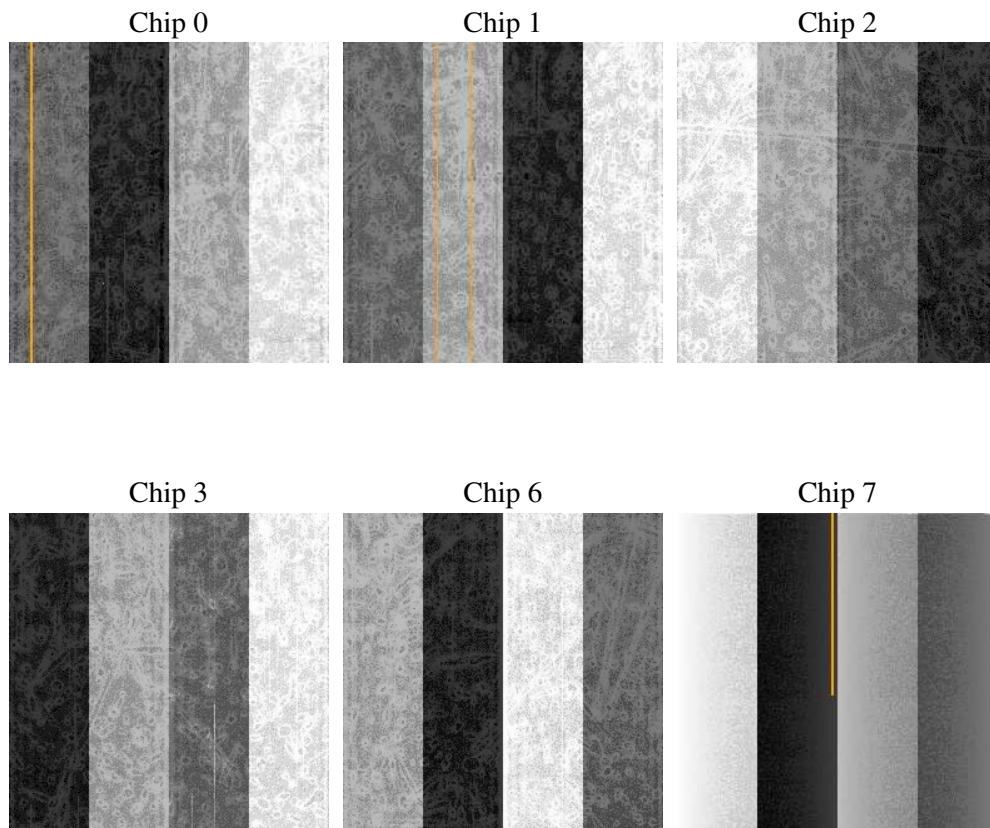
## 2 OBI

### 2.1 OBI

#### 2.1.1 Images



#### 2.1.2 Bias



### 2.1.3 Parameters

obi_num	2
ascdsver	7.6.8
caldbver	3.2.2
date	2006-08-01T11:48:34
revision	2

sched_exp_time	0.0
ontime	7438.1126141846
ontime0	4310.5656680167
ontime1	4391.5904135704
ontime2	4174.4438697398
ontime3	4223.058154583
ontime6	4589.2913740873
ontime7	7438.1126141846
l1events	1358258

### 2.1.4 Events

	ccd 0	ccd 1	ccd 2	ccd 3	ccd 6	ccd 7
level 1 events	196239	201374	193190	197964	220732	348759
rejected events	26724	27656	27397	28790	30391	49348
rejected %	13%	13%	14%	14%	13%	14%

	ccd 0	ccd 1	ccd 2	ccd 3	ccd 6	ccd 7
grade 0 events	93328	95499	93457	95188	104433	54743
	47%	47%	48%	48%	47%	15%
grade 1 events	518	455	529	530	462	119
	0%	0%	0%	0%	0%	0%
grade 2 events	29489	30952	27599	29174	32811	90436
	15%	15%	14%	14%	14%	25%
grade 3 events	11047	10990	10888	10888	11667	22560
	5%	5%	5%	5%	5%	6%
grade 4 events	11149	11095	10987	10940	11893	22060
	5%	5%	5%	5%	5%	6%
grade 5 events	1890	1904	1813	1968	2139	6457
	0%	0%	0%	0%	0%	1%
grade 6 events	24644	25295	23013	23117	29672	109728
	12%	12%	11%	11%	13%	31%
grade 7 events	24174	25184	24904	26159	27655	42656
	12%	12%	12%	13%	12%	12%

## 2.2 Compared Parameters

Parameter	Planned	Actual	Parameter	Planned	Actual
Instrument	ACIS	ACIS	Obspar format version number	6	6
Detector	ACIS-012367	ACIS-012367	Obspar file type	PREDICTED	ACTUAL
Grating	NONE	NONE	Obspar update status	NONE	UPDATED
Data mode	FAINT	FAINT	On-chip summing requested	N	N
Observation mode	SECONDARY	SECONDARY	Subarray requested	NONE	NONE
Pointing RA	0	283.1801293896402	Alternating exposures requested	N	N
Pointing Dec	0	-17.57860021077262	Primary exposure time	0.000000	3.2
Pointing Roll	0.0	98.64942070200071			
SIM focus pos (mm)	-0.782348	-0.6828225247311905			
SIM defocus (mm)	0	0.8505141146731063			
SIM translation stage pos (mm)	-233.592463	250.466033080201			
SIM translation stage offset (mm)	0	-0.01005468664627074			
Observation start time	168590072.597342	168590071.57263			
Observation start date	2003-05-06T06:34:33	2003-05-06T06:34:31			
Observation end time	168599234.047729	168599233.02301			
Observation end date	2003-05-06T09:07:14	2003-05-06T09:07:13			
Read mode	TIMED	TIMED			

## 2.3 Aspect



## **2.4 Star Slots**

## **2.5 FID Slots**



## A Summary

### A.1 Status

V&V Scientist	Jen Lauer
V&V Date (YYYY-MM-DD)	2006.08.01
V&V Edition	1
V&V Disposition and Status	OK
V&V Charge Time	7.43610063

### A.2 Comments