

V&V Reference Report

L2 ASCDS Version : 8.5.1

Observation 6071 - L2 Version 3
Chandra X-Ray Center

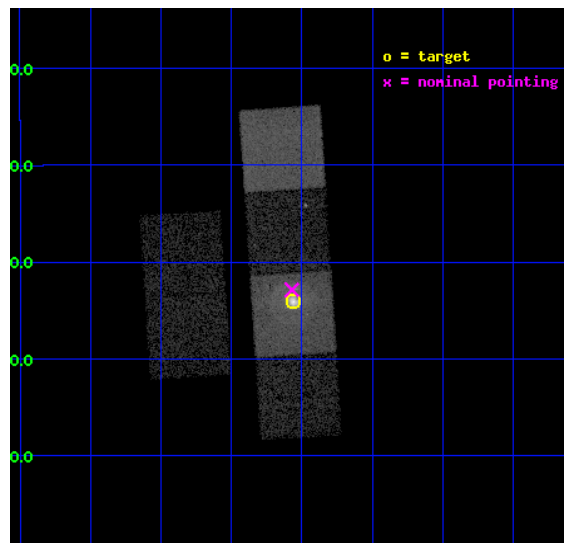
L2 Processing Date : Dec 18 2012

Contents

1	Front	2
2	OBI	3
2.1	OBI	3
2.1.1	Images	3
2.1.2	Bias	3
2.1.3	Parameters	4
2.1.4	Events	4
2.2	Compared Parameters	5
2.3	Aspect	6
2.4	Star Slots	9
2.4.1	Slot 3	9
2.4.2	Slot 4	10
2.4.3	Slot 5	11
2.4.4	Slot 6	12
2.4.5	Slot 7	13
2.5	FID Slots	14
2.5.1	Slot 0	14
2.5.2	Slot 1	15
2.5.3	Slot 2	16
A	Summary	17
A.1	Status	17
A.2	Comments	17

1 Front

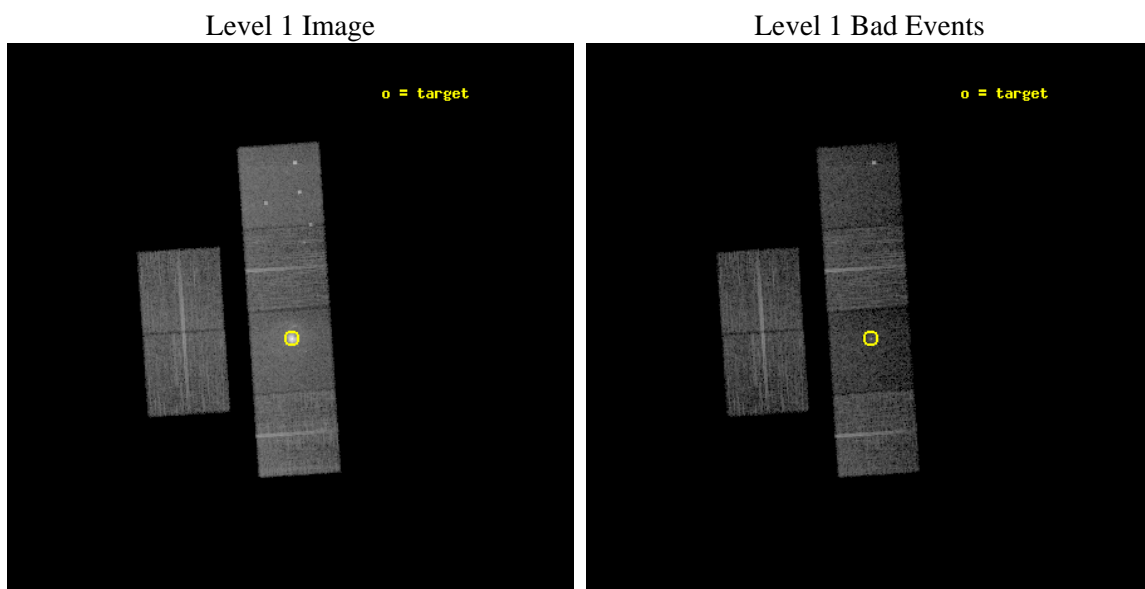
seq_num	590398	Sequence number
obs_id	6071	Observation id
title	AO6A Observations of the Standard Candles Cas A and G21.5-09	Propo
observer	Dr. CXC Calibration	Principal investigator
object	G21.5-09[S3,-120,-1.0,0,0]	Source name
dtcycle	0	
cycle	P	events from which exps? Prim/Second/Both
ra_targ	278.389583	Observer's specified target RA [deg]
dec_targ	-10.568528	Observer's specified target Dec [deg]
ra_nom	278.39277746357	Nominal RA [deg]
dec_nom	-10.547997038981	Nominal Dec [deg]
roll_nom	86.157267836189	Nominal Roll [deg]
revision	3	Processing version of data
ontime	9759.9999636412	Sum of GTIs [s]
livetime	9636.4129673351	Livetime [s]
ontime2	9759.9999636412	Sum of GTIs [s]
ontime3	9753.5180330276	Sum of GTIs [s]
ontime5	9759.9999636412	Sum of GTIs [s]
ontime6	9759.9999636412	Sum of GTIs [s]
ontime7	9759.9999636412	Sum of GTIs [s]
ontime8	9753.5180131495	Sum of GTIs [s]
l2events	116227	Number of level 2 events



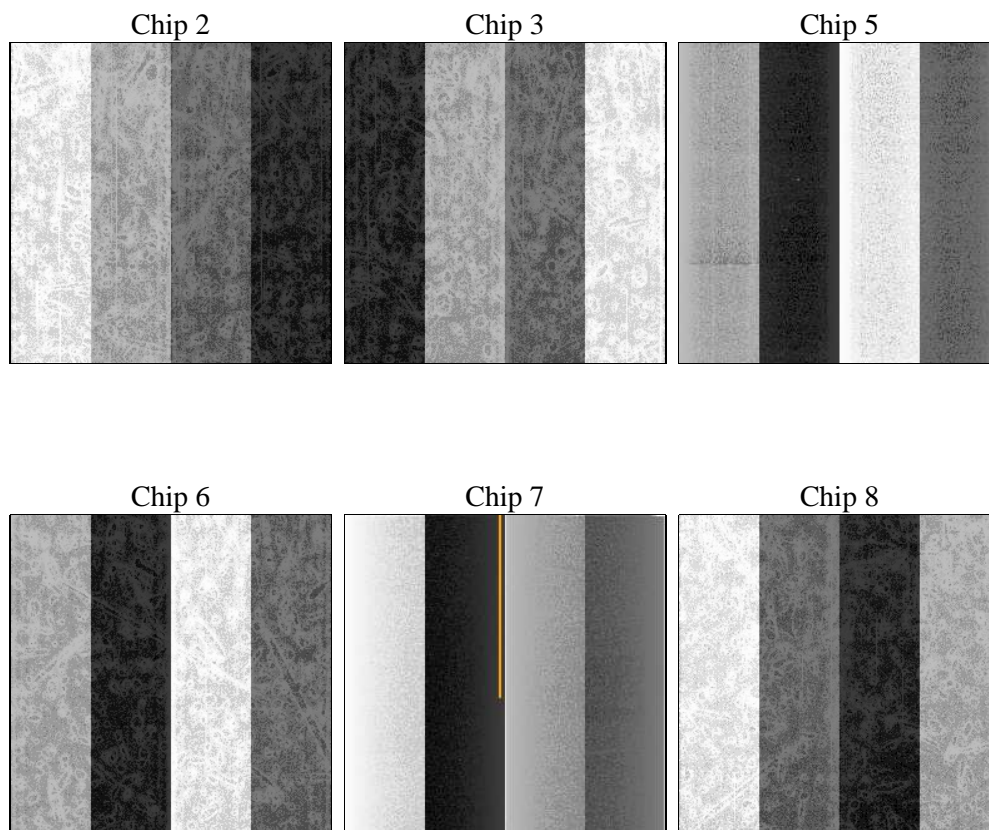
2 OBI

2.1 OBI

2.1.1 Images



2.1.2 Bias



2.1.3 Parameters

obi_num	0	Obi number	sched_exp_time	9800.000000	[s] Scheduled observation exposure time
ascdsver	8.5.1	Processing system revision	ontime	9759.9999636412	Sum of GTIs [s]
caldsver	4.5.5	 	ontime2	9759.9999636412	Sum of GTIs [s]
date	2012-12-17T19:11:10	Date and time of file creation	ontime3	9753.5180330276	Sum of GTIs [s]
revision	3	Processing version of data	ontime5	9759.9999636412	Sum of GTIs [s]
			ontime6	9759.9999636412	Sum of GTIs [s]
			ontime7	9759.9999636412	Sum of GTIs [s]
			ontime8	9753.5180131495	Sum of GTIs [s]
			l1events	406918	Number of level 1 events

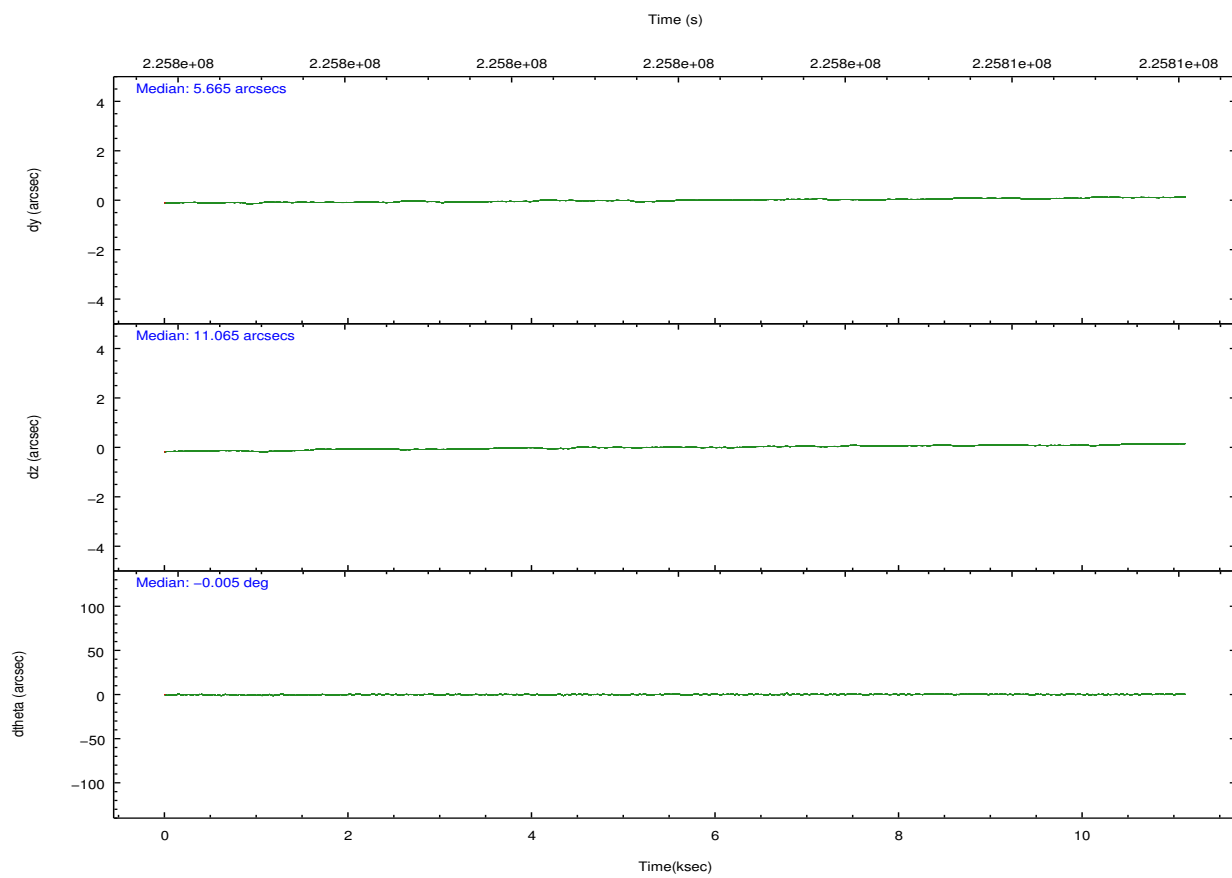
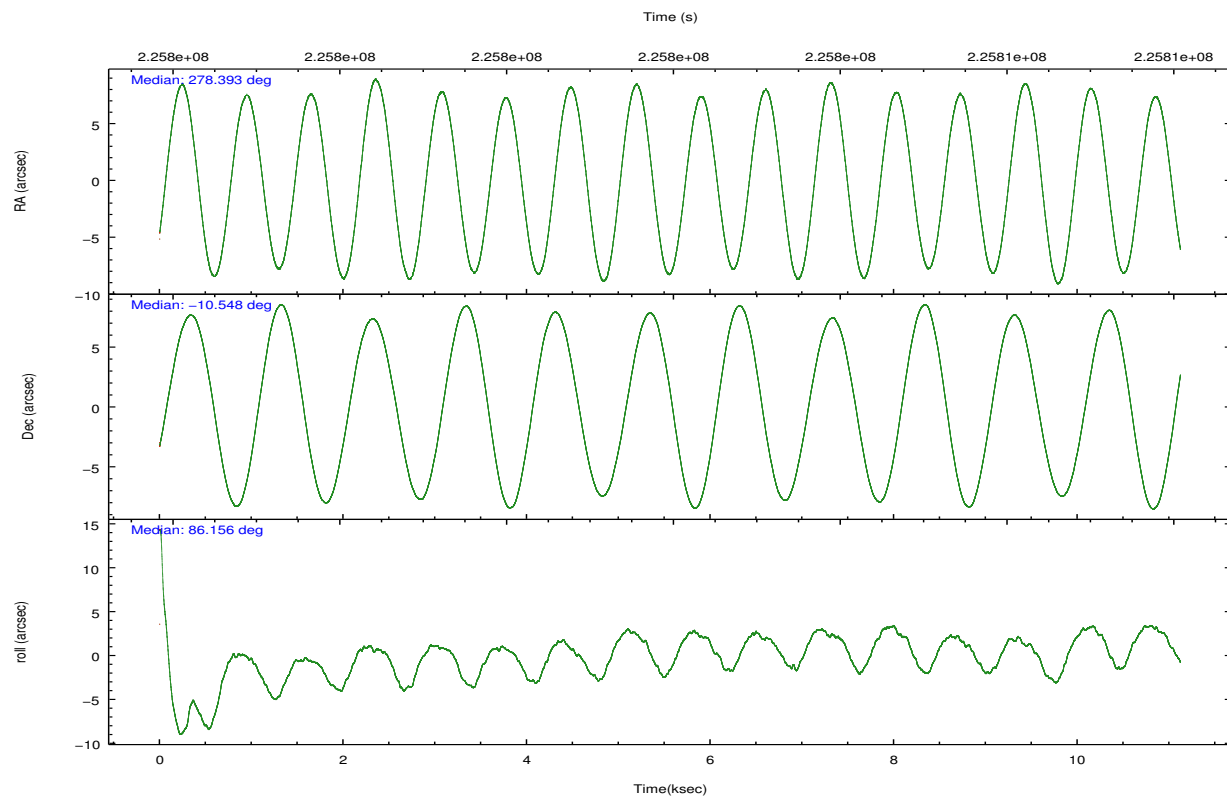
2.1.4 Events

	ccd 2	ccd 3	ccd 5	ccd 6	ccd 7	ccd 8		ccd 2	ccd 3	ccd 5	ccd 6	ccd 7	ccd 8
level 1 events	58689	54090	72403	60127	90303	71306	grade 0 events	2150	2011	4944	2988	10666	5052
rejected events	53087	48767	33669	53117	28850	53974		3%	3%	6%	4%	11%	7%
rejected %	90%	90%	46%	88%	31%	75%	grade 1 events	34	38	137	33	109	50
								0%	0%	0%	0%	0%	0%
							grade 2 events	1304	1151	11643	1419	14415	3931
								2%	2%	16%	2%	15%	5%
							grade 3 events	612	585	1883	691	6676	2107
								1%	1%	2%	1%	7%	2%
							grade 4 events	588	614	1723	693	6507	1874
								1%	1%	2%	1%	7%	2%
							grade 5 events	1665	1872	6422	1907	6331	2872
								2%	3%	8%	3%	7%	4%
							grade 6 events	948	966	18550	1222	23211	4371
								1%	1%	25%	2%	25%	6%
							grade 7 events	51388	46853	27101	51174	22388	51049
								87%	86%	37%	85%	24%	71%

2.2 Compared Parameters

Parameter	Planned	Actual	Parameter	Planned	Actual
Instrument	ACIS	ACIS	Obspar format version number	7	7
Detector	ACIS-235678	ACIS-235678	Obspar file type	PREDICTED	ACTUAL
Grating	NONE	NONE	Obspar update status	NONE	UPDATED
Data mode	VFAINT	VFAINT	Number of optional ACIS chips dropped	0	0
Observation mode	POINTING	POINTING	On-chip summing requested	N	N
[deg] Pointing RA	278.405294	278.392777463569	Subarray requested	NONE	NONE
[deg] Pointing Dec	-10.572274	-10.54799703898108	Alternating exposures requested	N	N
[deg] Pointing Roll	86.002918	86.15726783618911	[s] Primary exposure time	0.000000	3.2
[s] Window start time (MET)	223603264.184000	223603264.184000			
[s] Window stop time (MET)	233884864.184000	233884864.184000			
[mm] SIM focus pos	-0.684267	-0.6828225247311905			
[mm] SIM defocus	0	0.001444936568705701			
[mm] SIM translation stage pos	-190.132523	-190.1425803651734			
[mm] SIM translation stage offset	0	0.01005778216563158			
[s] Observation start time (MET)	225797727.184000	225796196.86957			
Observation start date	2005-02-26T09:34:23	2005-02-26T09:09:56			
[s] Observation end time (MET)	225807527.184000	225807718.38259			
Observation end date	2005-02-26T12:17:43	2005-02-26T12:21:58			
Read mode	TIMED	TIMED			

2.3 Aspect

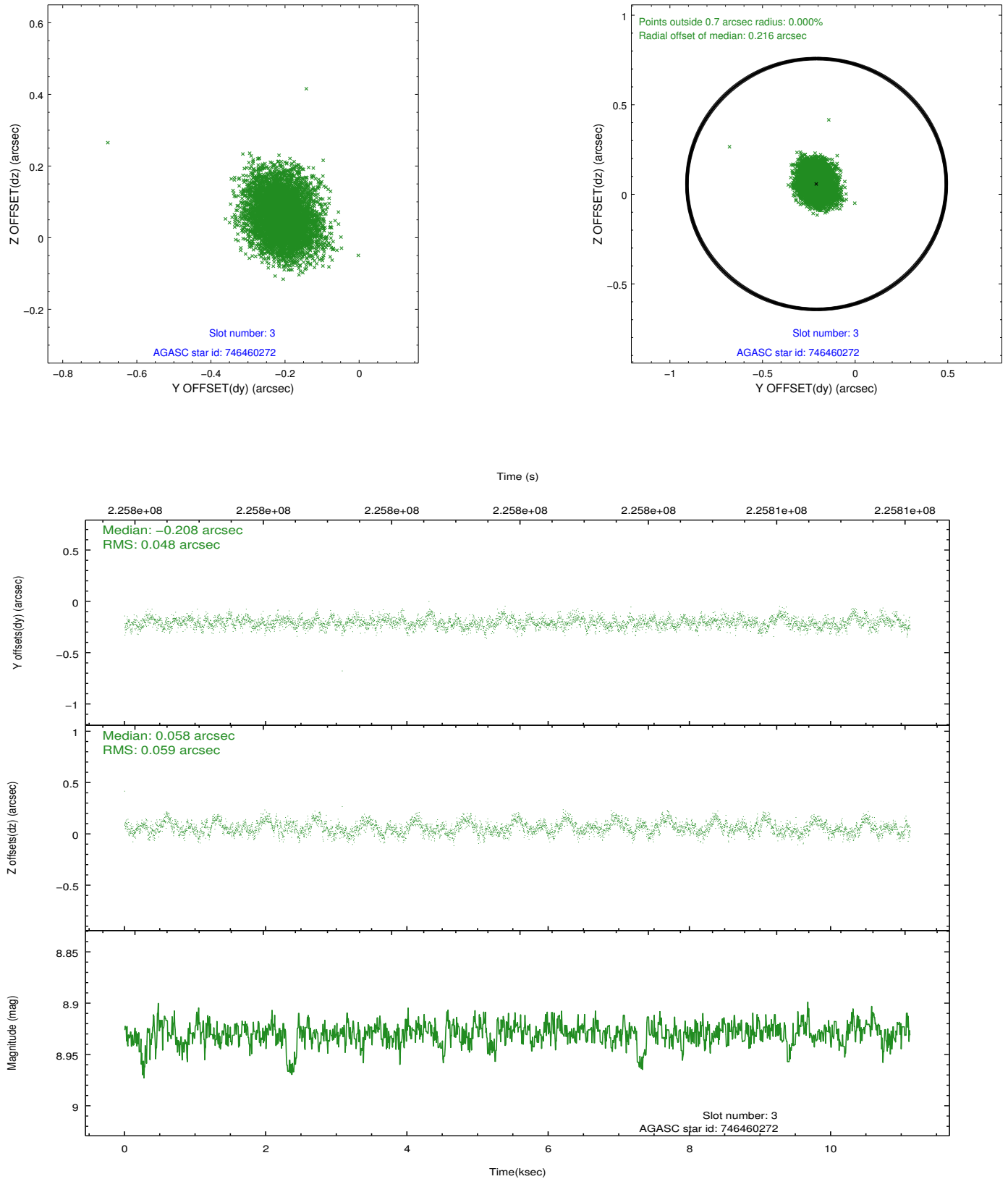


Slot Statistics

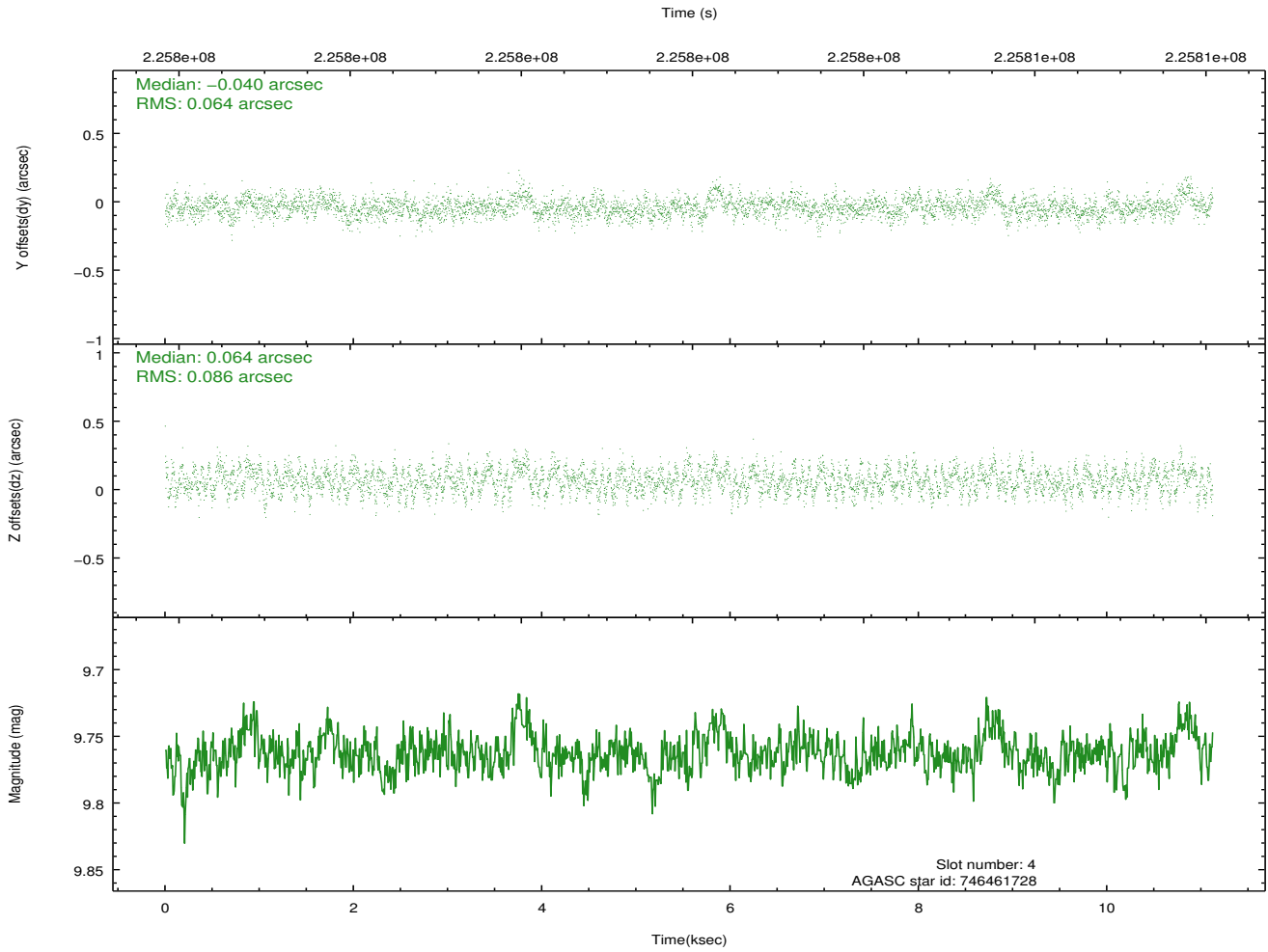
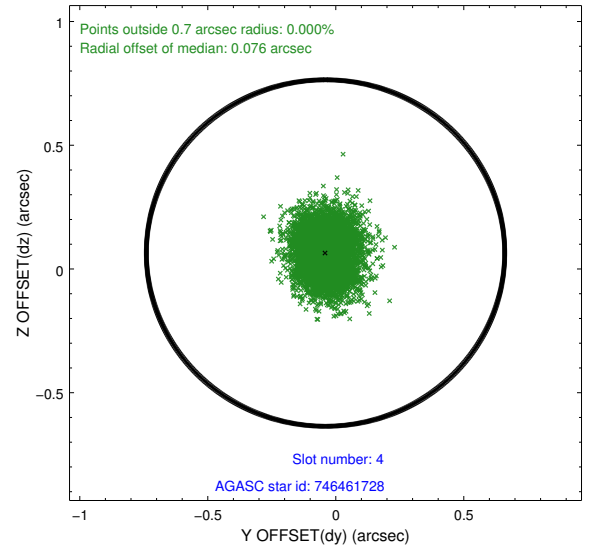
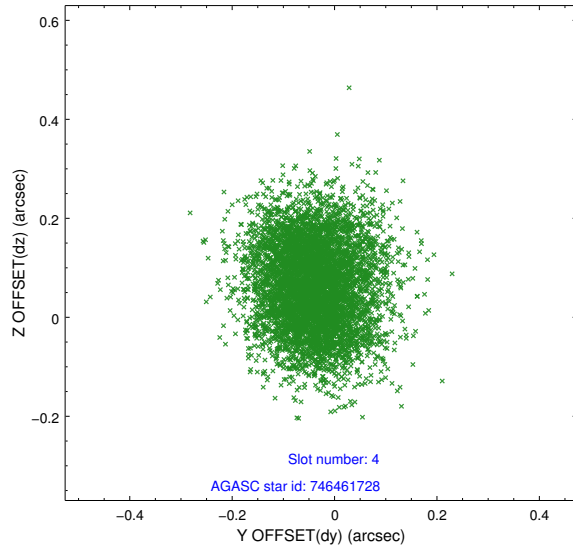
slot	status	id	mag	n_pts	med_dy	med_dz	dr1	dr2	ra	dec	mean_y	mean_z
0	FID	ACIS-S-2	7.10	2714	-0.068	-0.024	0.007	0.011	0.000000	0.000000	-758.42	-1732.32
1	FID	ACIS-S-4	7.21	2714	0.105	0.039	0.006	0.011	0.000000	0.000000	2154.80	175.78
2	FID	ACIS-S-5	7.23	2714	-0.069	-0.006	0.007	0.011	0.000000	0.000000	-1810.69	169.89
3	GUIDE	746460272	8.93	5422	-0.208	0.058	0.082	0.131	278.847488	-10.152127	1617.48	-1457.41
4	GUIDE	746461728	9.76	5424	-0.040	0.064	0.115	0.184	278.986921	-10.530755	291.64	-2043.15
5	GUIDE	746462392	8.54	5424	0.082	0.048	0.078	0.126	279.038421	-10.890715	-990.03	-2313.59
6	GUIDE	746462456	8.38	5424	0.001	-0.168	0.064	0.102	278.652171	-10.530173	211.55	-861.57
7	GUIDE	746462680	9.02	5424	0.165	-0.005	0.077	0.122	278.660755	-10.782756	-692.43	-953.91

2.4 Star Slots

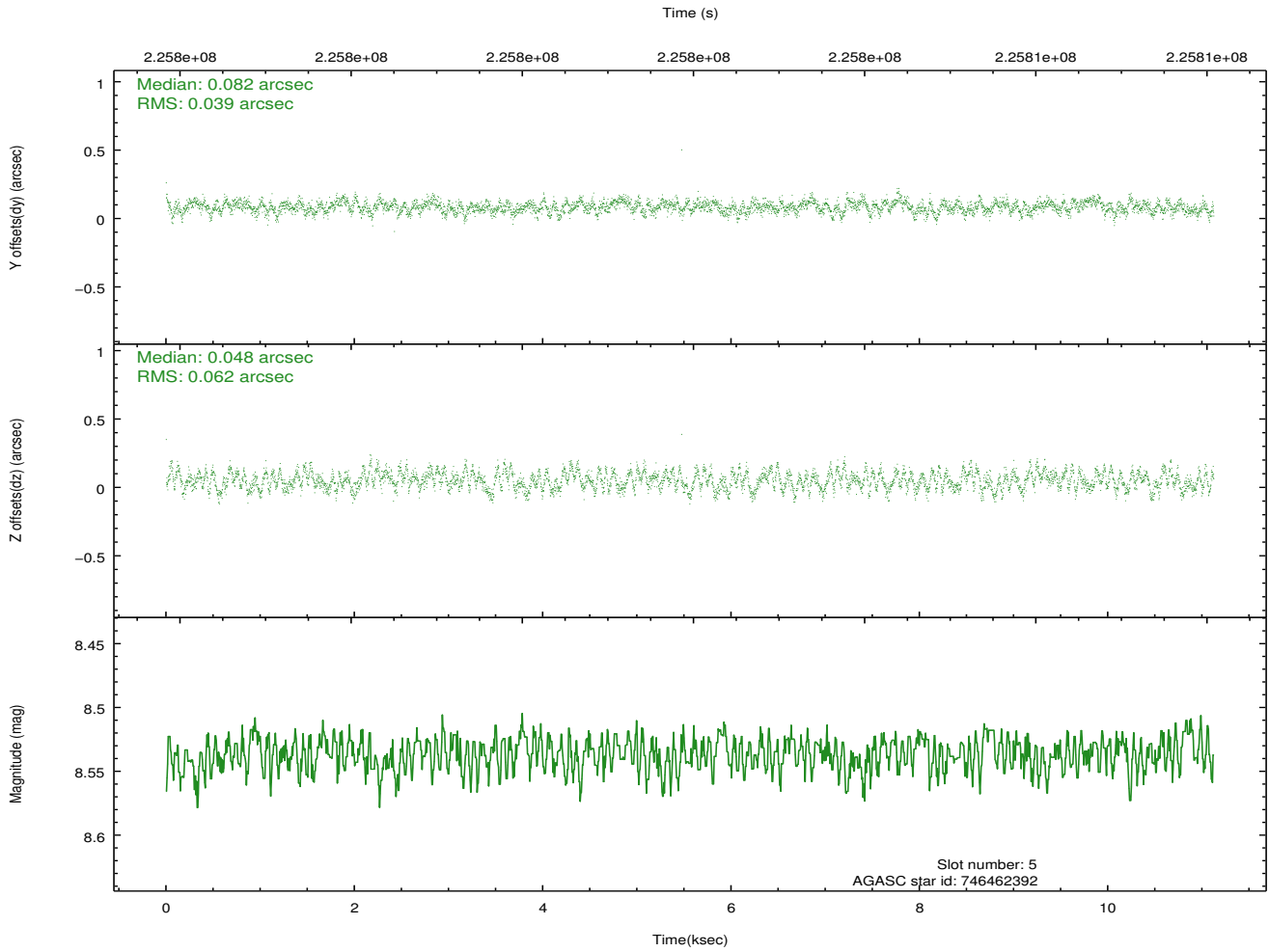
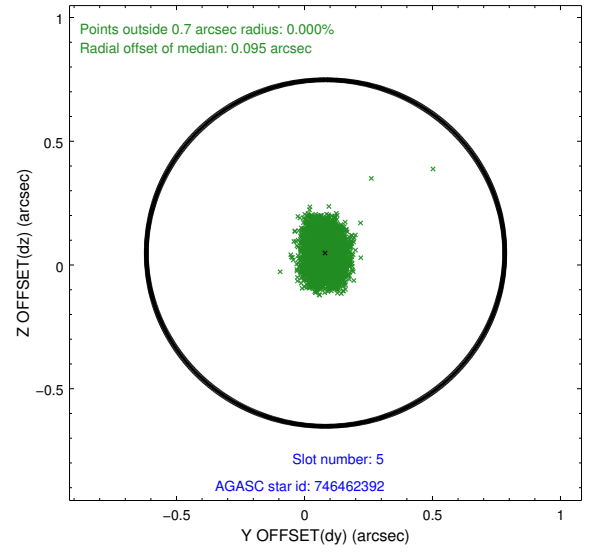
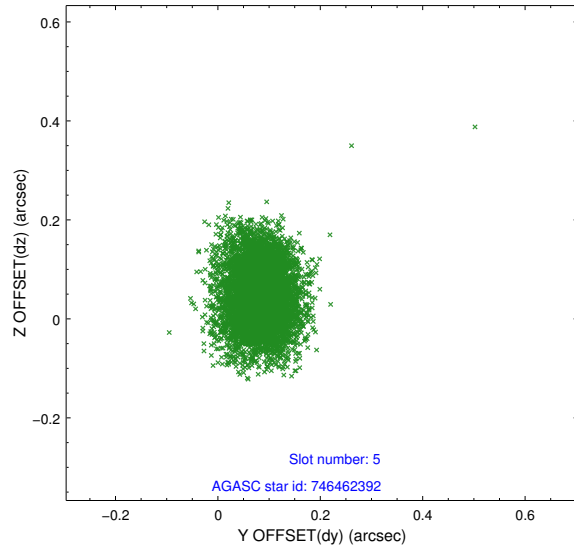
2.4.1 Slot 3



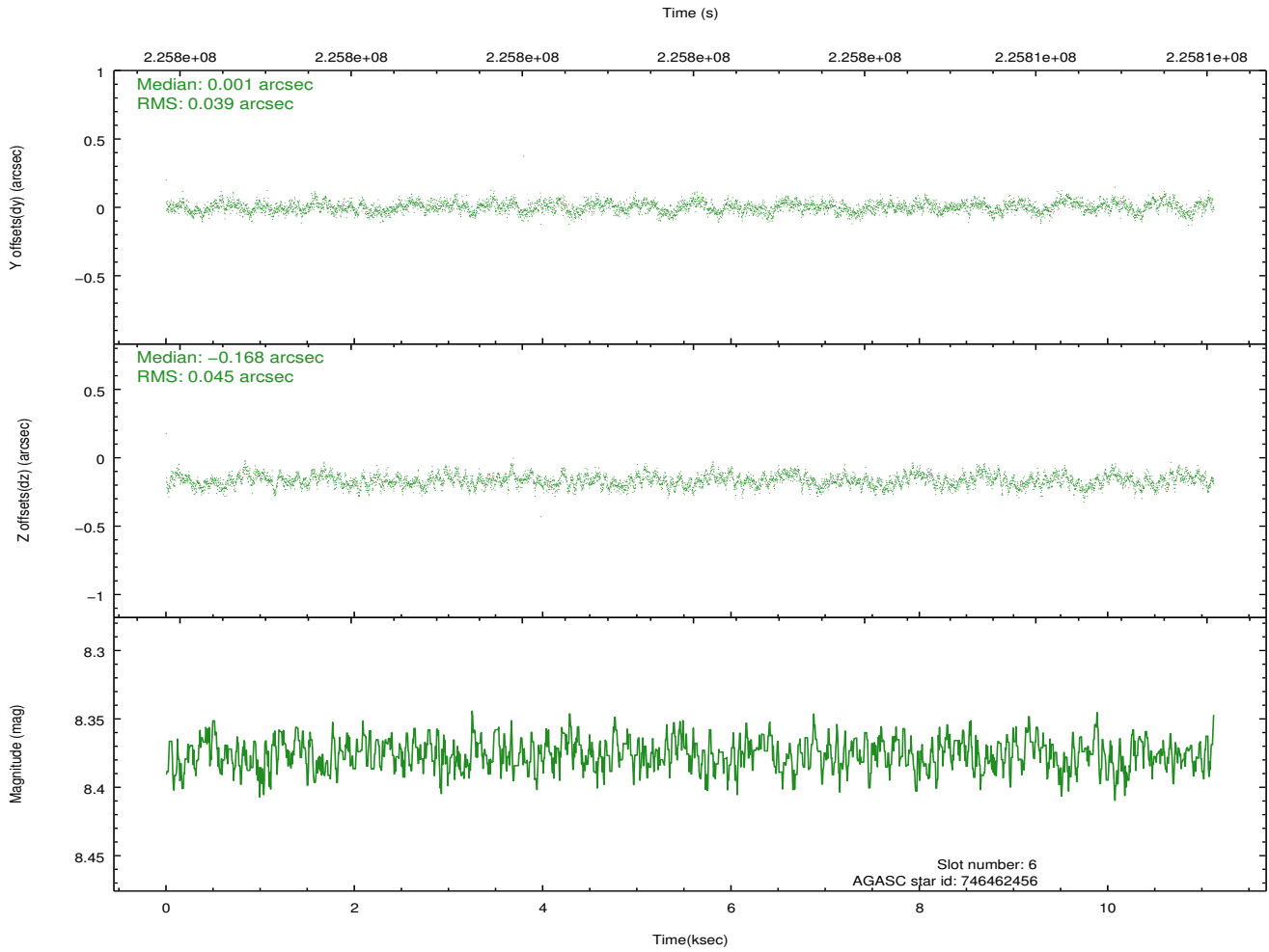
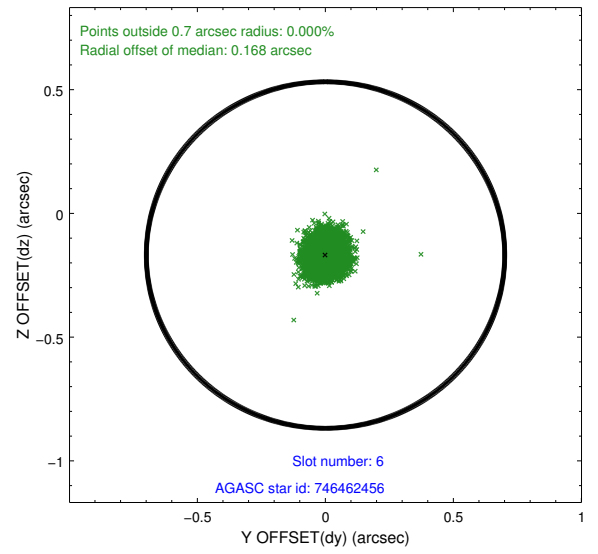
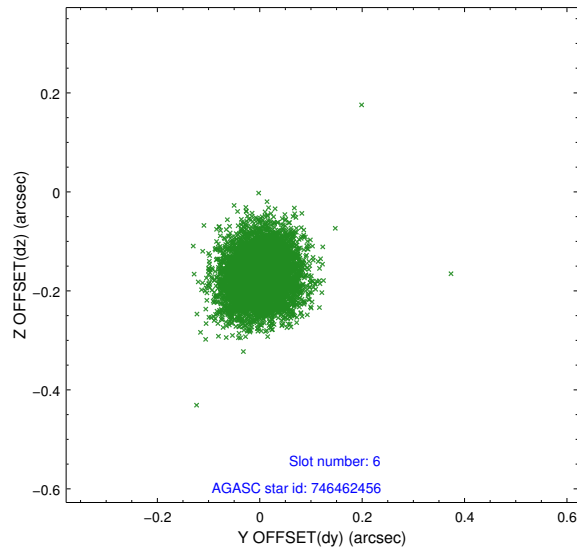
2.4.2 Slot 4



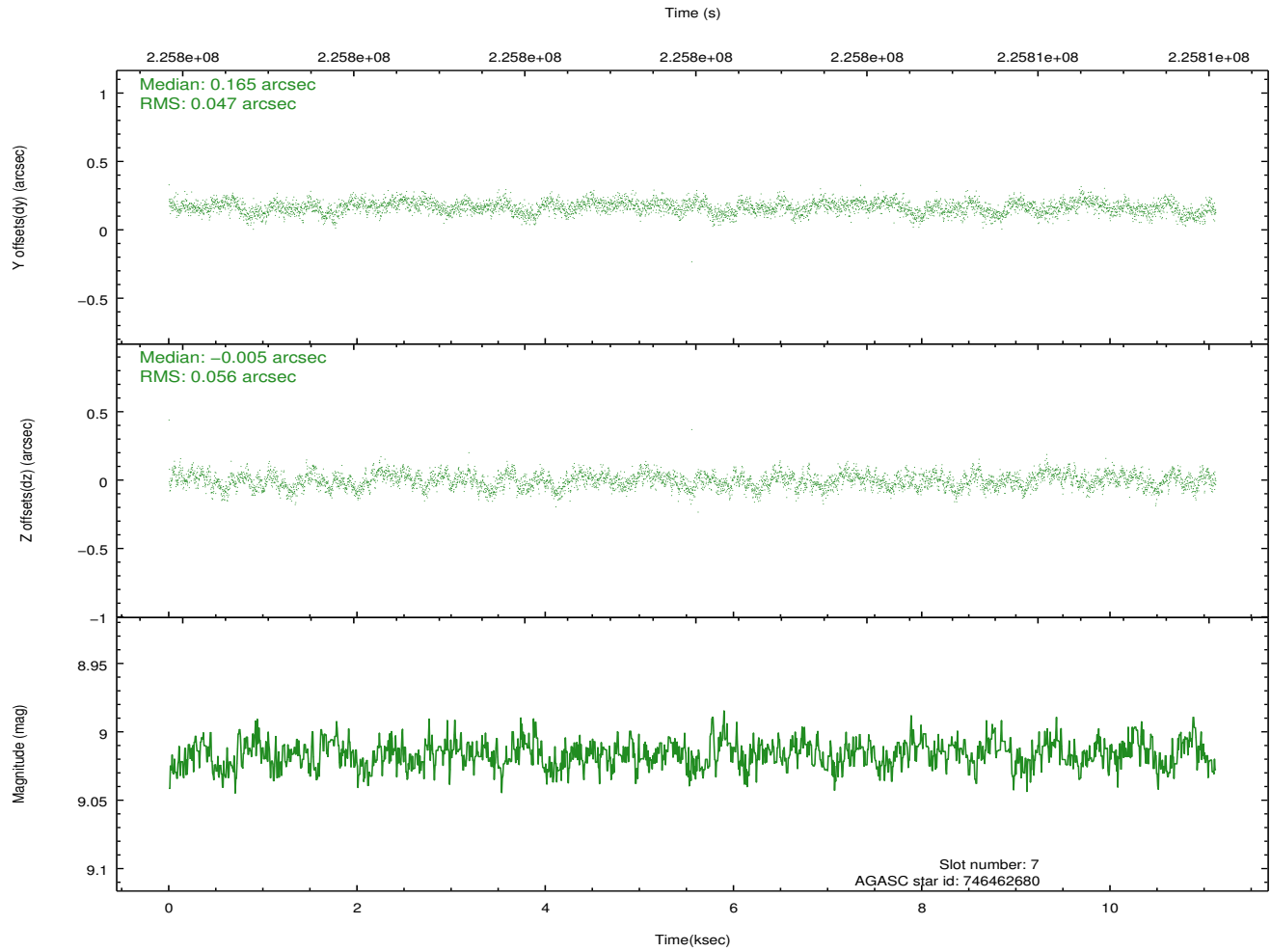
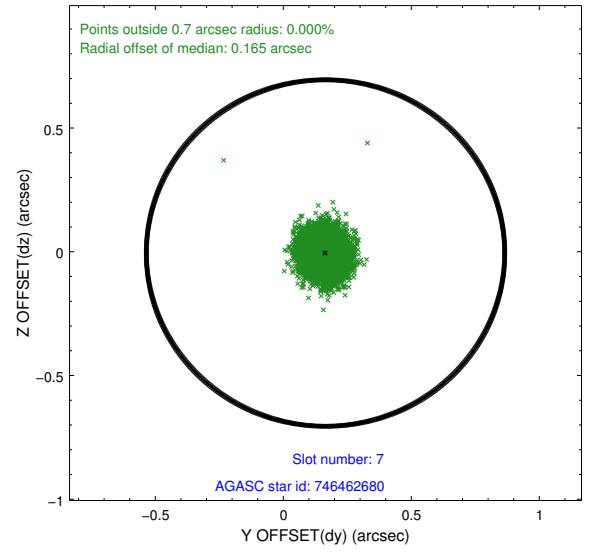
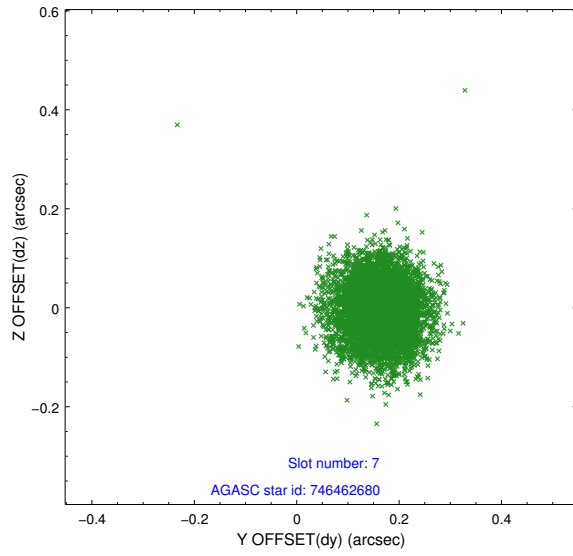
2.4.3 Slot 5



2.4.4 Slot 6

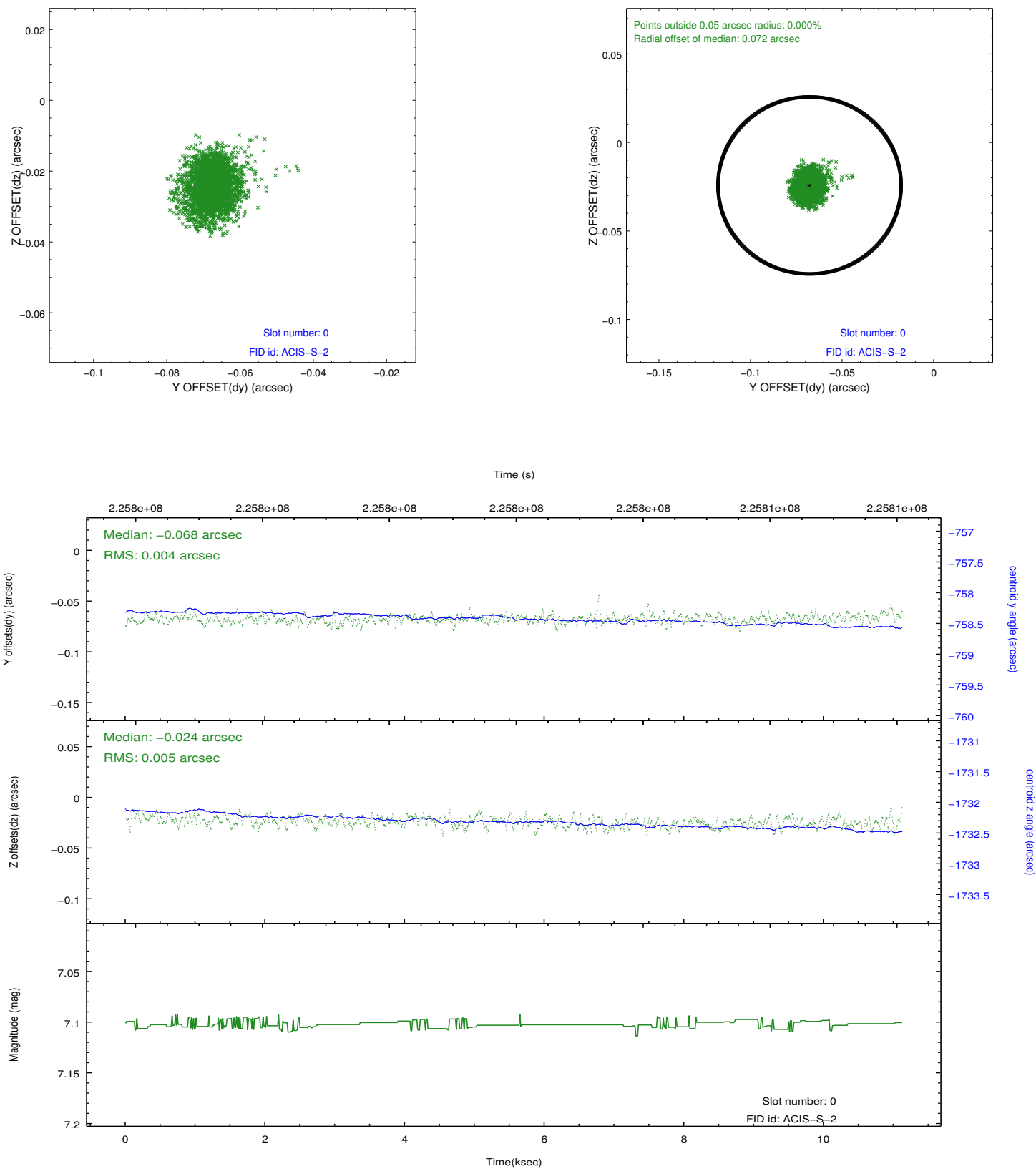


2.4.5 Slot 7

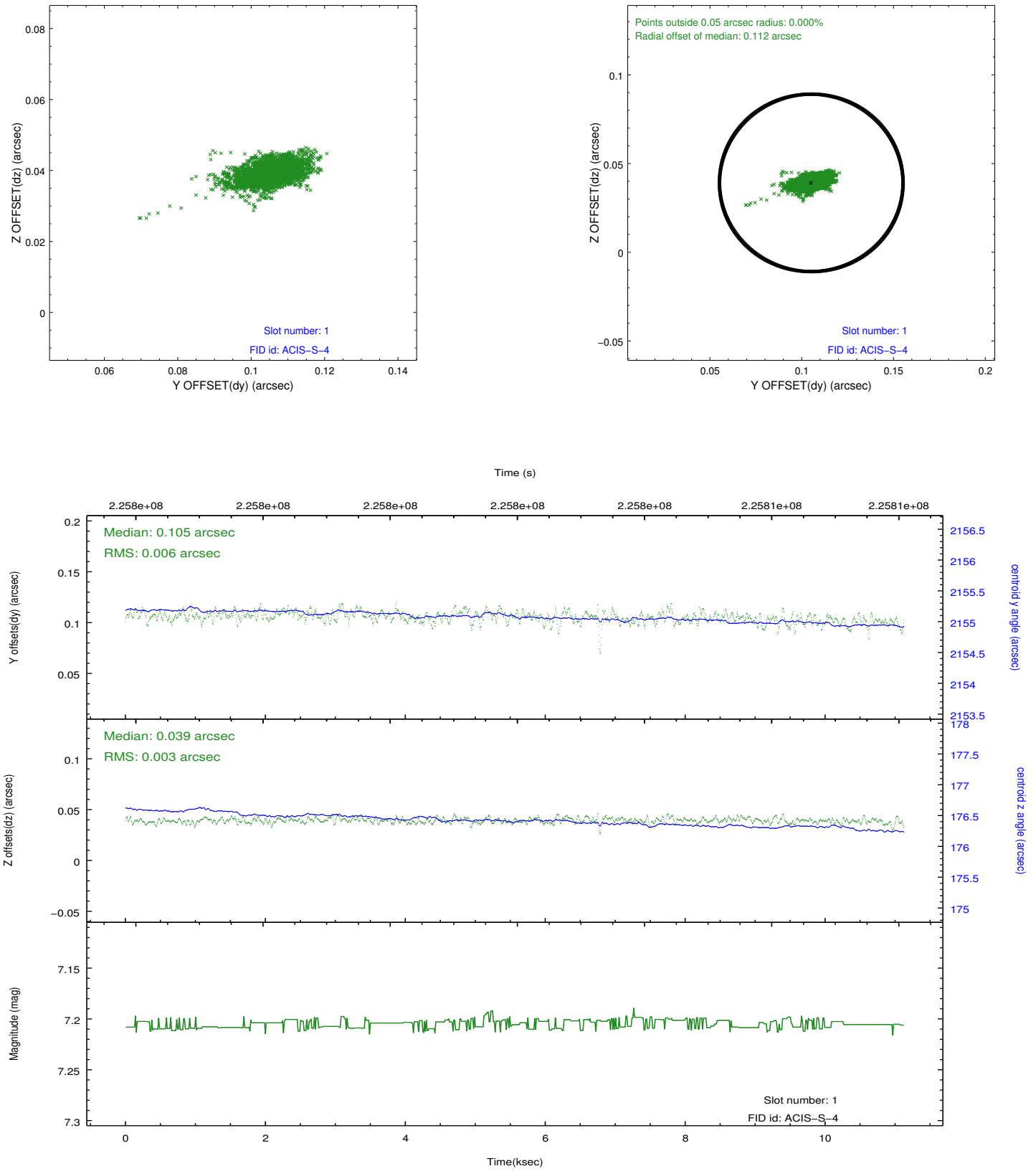


2.5 FID Slots

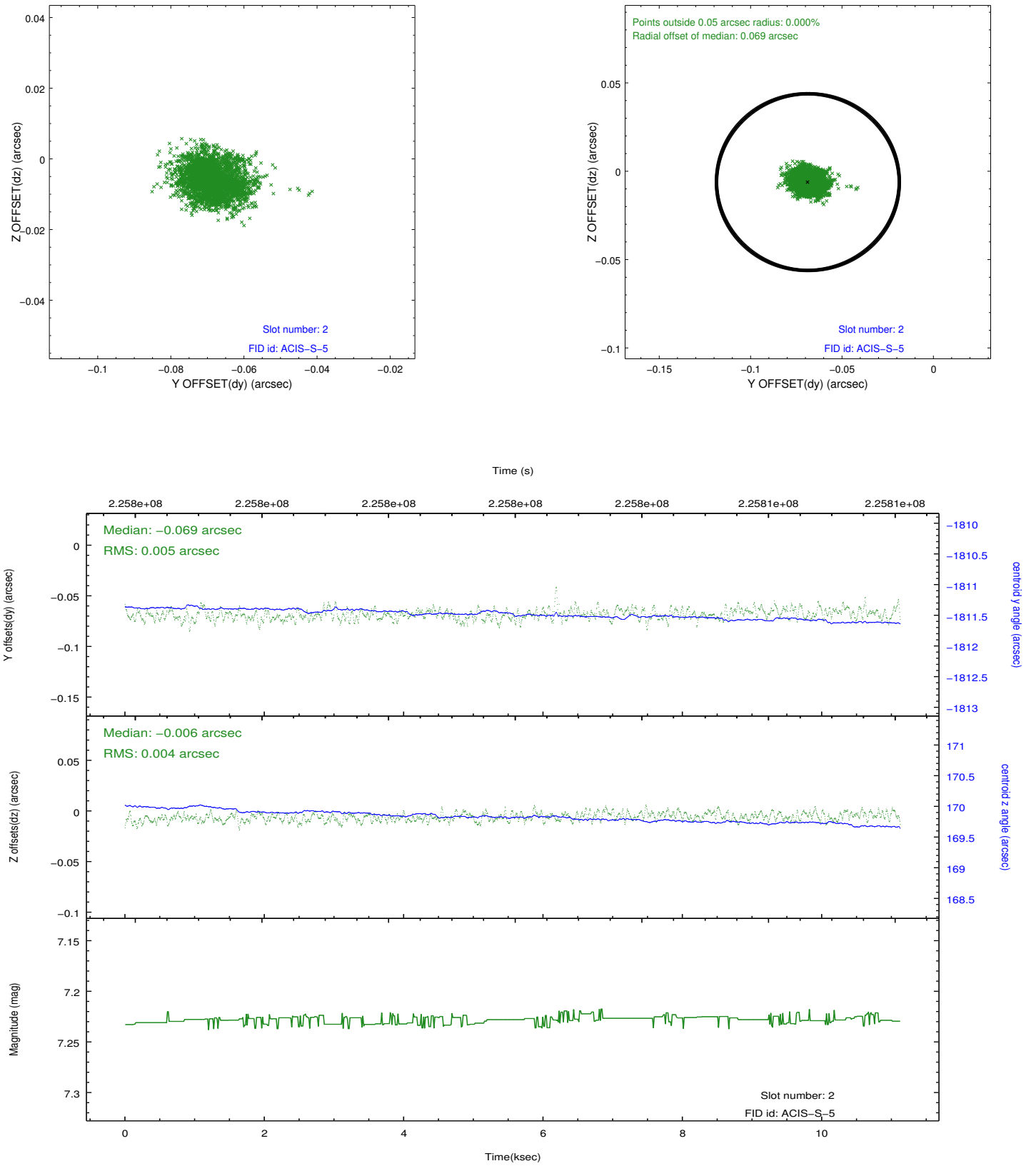
2.5.1 Slot 0



2.5.2 Slot 1



2.5.3 Slot 2



A Summary

A.1 Status

V&V Scientist	Jen Lauer
V&V Date (YYYY-MM-DD)	2013.01.11
V&V Edition	1
V&V Disposition and Status	OK
V&V Charge Time	9.759999

A.2 Comments

Window constraint met.