

# V&V Reference Report

## L2 ASCDS Version : 7.6.8

Observation 60541 - L2 Version 001  
Chandra X-Ray Center

L2 Processing Date : Jul 3 2006

## Contents

<b>1</b>	<b>Front</b>	<b>2</b>
<b>2</b>	<b>OBI</b>	<b>3</b>
2.1	OBI . . . . .	3
2.1.1	Images . . . . .	3
2.1.2	Bias . . . . .	3
2.1.3	Parameters . . . . .	4
2.1.4	Events . . . . .	4
2.2	Compared Parameters . . . . .	5
2.3	Aspect . . . . .	6
2.4	Star Slots . . . . .	8
2.5	FID Slots . . . . .	8
<b>A</b>	<b>Summary</b>	<b>9</b>
A.1	Status . . . . .	9
A.2	Comments . . . . .	9

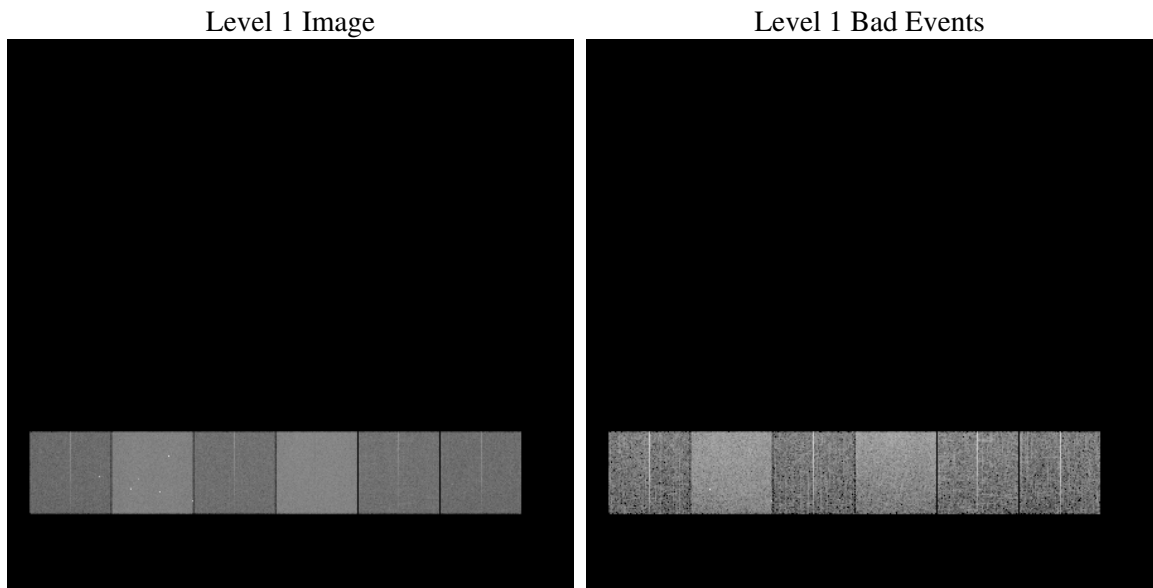
# 1 Front

seq_num	&#160
obs_id	60541
title	ACIS-456789 diagnostics
observer	CHANDRA engineering request/realtime commanding
object	&#160
dtcycle	0
cycle	P
ra_targ	0.0
dec_targ	0.0
ra_nom	350.00273064642
dec_nom	9.9714872856676
roll_nom	242.49065626775
revision	2
ontime	7801.5999709368
livetime	7702.8114145452
ontime4	3958.8056456149
ontime5	7801.5999709368
ontime6	4327.2771809995
ontime7	7801.5999709368
ontime8	4405.0613053739
ontime9	4145.7815021574
l2events	1123168

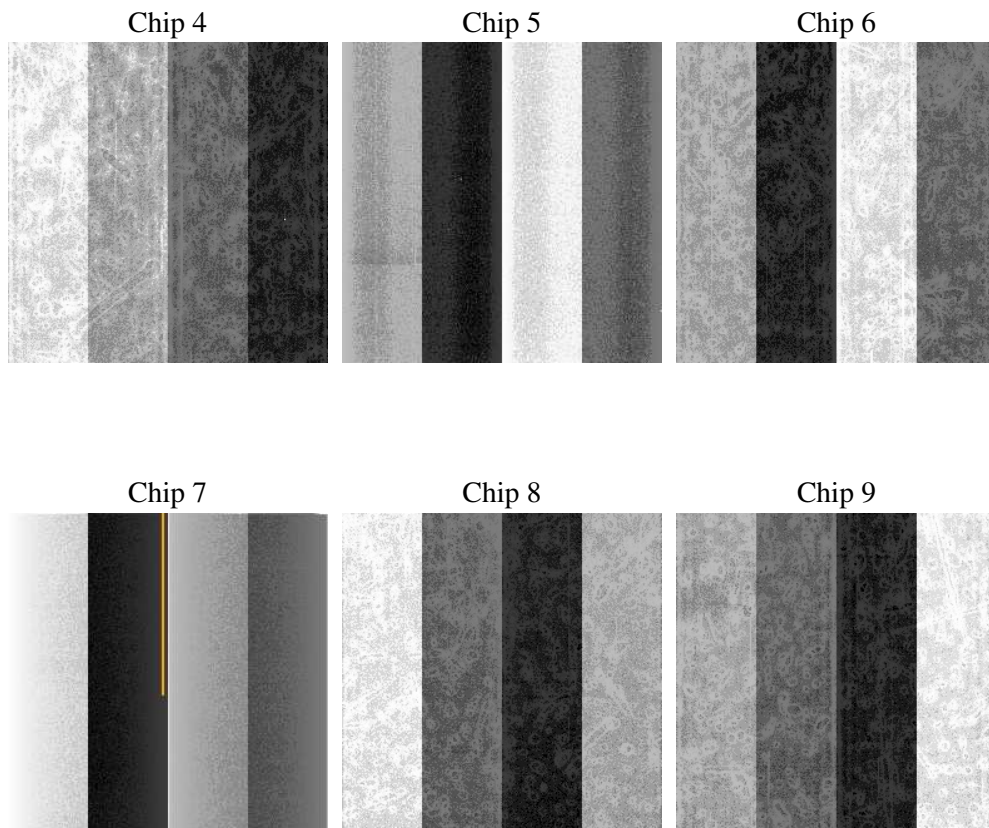
## 2 OBI

### 2.1 OBI

#### 2.1.1 Images



#### 2.1.2 Bias



### 2.1.3 Parameters

obi_num	0
ascdsver	7.6.8
caldbver	3.2.2
date	2006-07-03T04:59:04
revision	2

sched_exp_time	0.0
ontime	7804.3320948184
ontime4	3960.5368632972
ontime5	7804.3320948184
ontime6	4330.0093048811
ontime7	7804.3320948184
ontime8	4407.7934292555
ontime9	4148.513626039
l1events	1419199

### 2.1.4 Events

	ccd 4	ccd 5	ccd 6	ccd 7	ccd 8	ccd 9
level 1 events	169856	321769	196127	345800	203776	181871
rejected events	29965	57990	30440	52391	34041	30186
rejected %	17%	18%	15%	15%	16%	16%

	ccd 4	ccd 5	ccd 6	ccd 7	ccd 8	ccd 9
grade 0 events	81322	36453	90296	54792	92986	83358
	47%	11%	46%	15%	45%	45%
grade 1 events	543	212	465	132	448	467
	0%	0%	0%	0%	0%	0%
grade 2 events	22180	121703	28824	86786	29791	26124
	13%	37%	14%	25%	14%	14%
grade 3 events	9215	9512	10210	22299	11063	9683
	5%	2%	5%	6%	5%	5%
grade 4 events	9301	9220	10429	21887	10852	9688
	5%	2%	5%	6%	5%	5%
grade 5 events	1813	6551	2119	6840	2551	2229
	1%	2%	1%	1%	1%	1%
grade 6 events	17986	86990	26046	107766	25170	22950
	10%	27%	13%	31%	12%	12%
grade 7 events	27496	51128	27738	45298	30915	27372
	16%	15%	14%	13%	15%	15%

## 2.2 Compared Parameters

Parameter	Planned	Actual	Parameter	Planned	Actual
Instrument	ACIS	ACIS	Obspar format version number	6	6
Detector	ACIS-456789	ACIS-456789	Obspar file type	PREDICTED	ACTUAL
Grating	NONE	NONE	Obspar update status	NONE	UPDATED
Data mode	FAINT	FAINT	On-chip summing requested	N	N
Observation mode	SECONDARY	SECONDARY	Subarray requested	NONE	NONE
Pointing RA	0	350.0027306464247	Alternating exposures requested	N	N
Pointing Dec	0	9.97148728566758	Primary exposure time	0.000000	3.2
Pointing Roll	0.0	242.4906562677546			
SIM focus pos (mm)	-0.684267	-0.6828225247311905			
SIM defocus (mm)	0	0.8505141146731063			
SIM translation stage pos (mm)	-190.132523	250.466033080201			
SIM translation stage offset (mm)	0	-0.01005468664627074			
Observation start time	181160710.03306	181160709.00835			
Observation start date	2003-09-28T18:25:10	2003-09-28T18:25:09			
Observation end time	181179377.333861	181179376.30915			
Observation end date	2003-09-28T23:36:17	2003-09-28T23:36:16			
Read mode	TIMED	TIMED			

## 2.3 Aspect



## **2.4 Star Slots**

## **2.5 FID Slots**



## A Summary

### A.1 Status

V&V Scientist	Beth Sundheim
V&V Date (YYYY-MM-DD)	2006.07.03
V&V Edition	1
V&V Disposition and Status	OK
V&V Charge Time	7.80159997

### A.2 Comments