

V&V Reference Report

L2 ASCDS Version : 7.6.7.2

Observation 60291 - L2 Version 001
Chandra X-Ray Center

L2 Processing Date : May 27 2006

Contents

1	Front	2
2	OBI	3
2.1	OBI	3
2.1.1	Images	3
2.1.2	Bias	3
2.1.3	Parameters	4
2.1.4	Events	4
2.2	Compared Parameters	5
2.3	Aspect	6
2.4	Star Slots	8
2.5	FID Slots	8
A	Summary	9
A.1	Status	9
A.2	Comments	9

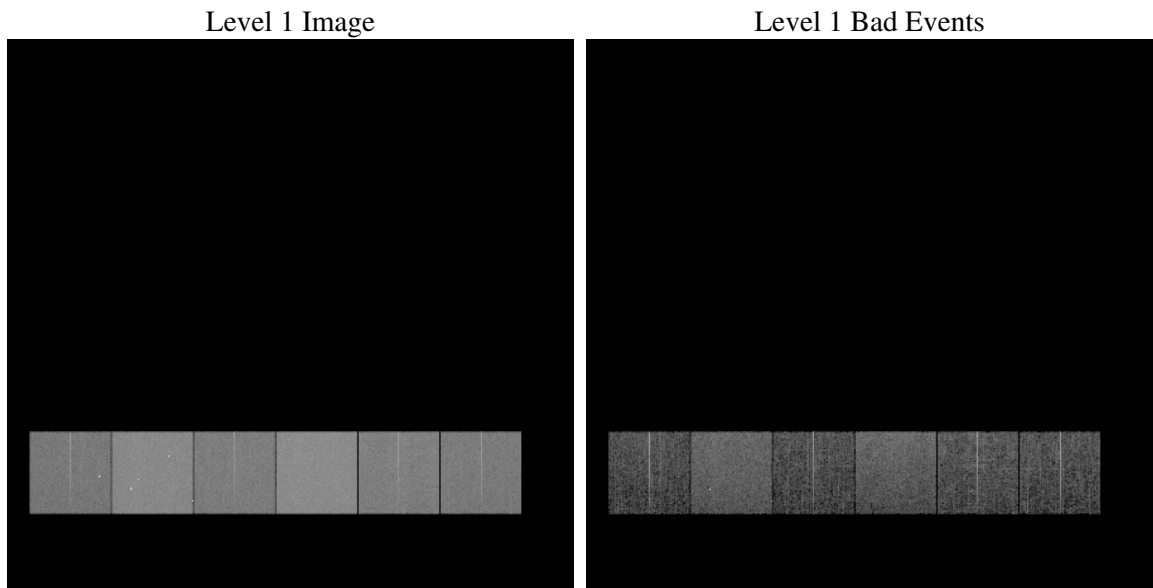
1 Front

seq_num	
obs_id	60291
title	ACIS-456789 diagnostics
observer	CHANDRA engineering request/realtime commanding
object	
dtcycle	0
cycle	P
ra_targ	0.0
dec_targ	0.0
ra_nom	216.97985840529
dec_nom	-2.579712535215
roll_nom	101.82911888025
revision	2
ontime	7955.1999703646
livetime	7854.4664382935
ontime4	4983.223496139
ontime5	7955.1999703646
ontime6	5368.901352495
ontime7	7955.1999703646
ontime8	5462.889909029
ontime9	5135.5494590104
l2events	1108964

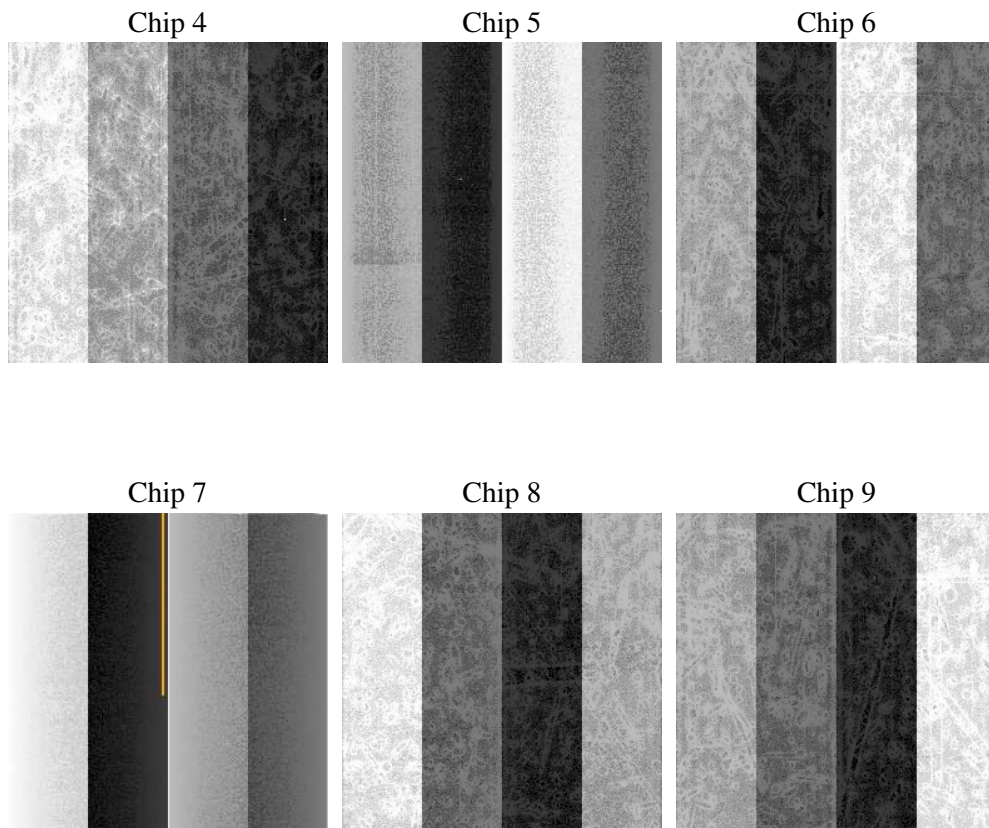
2 OBI

2.1 OBI

2.1.1 Images



2.1.2 Bias



2.1.3 Parameters

obi_num	0
ascdsver	7.6.7.2
caldsver	3.2.2
date	2006-05-27T15:52:15
revision	2

sched_exp_time	0.0
ontime	8002.0427617431
ontime4	5010.6203761399
ontime5	8002.0427617431
ontime6	5396.2982524037
ontime7	8002.0427617431
ontime8	5496.7688191831
ontime9	5162.9463489056
l1events	1450831

2.1.4 Events

	ccd 4	ccd 5	ccd 6	ccd 7	ccd 8	ccd 9
level 1 events	191127	297854	214874	317646	227764	201566
rejected events	37436	62531	37284	56575	43470	39022
rejected %	19%	20%	17%	17%	19%	19%

	ccd 4	ccd 5	ccd 6	ccd 7	ccd 8	ccd 9
grade 0 events	90071	28414	97172	46194	101209	89749
	47%	9%	45%	14%	44%	44%
grade 1 events	633	161	491	121	529	540
	0%	0%	0%	0%	0%	0%
grade 2 events	24429	111260	31178	79148	32553	28231
	12%	37%	14%	24%	14%	14%
grade 3 events	10317	7533	11002	19203	11982	10647
	5%	2%	5%	6%	5%	5%
grade 4 events	10372	7418	10976	18823	12063	10456
	5%	2%	5%	5%	5%	5%
grade 5 events	2220	6083	2581	6784	3113	2686
	1%	2%	1%	2%	1%	1%
grade 6 events	19348	82178	28240	99236	27633	24371
	10%	27%	13%	31%	12%	12%
grade 7 events	33737	54807	33234	48137	38682	34886
	17%	18%	15%	15%	16%	17%

2.2 Compared Parameters

Parameter	Planned	Actual	Parameter	Planned	Actual
Instrument	ACIS	ACIS	Obspar format version number	6	6
Detector	ACIS-456789	ACIS-456789	Obspar file type	PREDICTED	ACTUAL
Grating	NONE	NONE	Obspar update status	NONE	UPDATED
Data mode	FAINT	FAINT	On-chip summing requested	N	N
Observation mode	SECONDARY	SECONDARY	Subarray requested	NONE	NONE
Pointing RA	0	216.9798584052853	Alternating exposures requested	N	N
Pointing Dec	0	-2.579712535215046	Primary exposure time	0.000000	3.2
Pointing Roll	0.0	101.8291188802476			
SIM focus pos (mm)	-0.684267	-0.6828225247311905			
SIM defocus (mm)	0	0.8505141146731063			
SIM translation stage pos (mm)	-190.132523	250.466033080201			
SIM translation stage offset (mm)	0	-0.01005468664627074			
Observation start time	197650213.750694	197650212.72571			
Observation start date	2004-04-06T14:50:14	2004-04-06T14:50:12			
Observation end time	197672927.751692	197672926.72671			
Observation end date	2004-04-06T21:08:48	2004-04-06T21:08:46			
Read mode	TIMED	TIMED			

2.3 Aspect

2.4 Star Slots

2.5 FID Slots

A Summary

A.1 Status

V&V Scientist	Jen Lauer
V&V Date (YYYY-MM-DD)	2006.05.30
V&V Edition	1
V&V Disposition and Status	OK
V&V Charge Time	7.95519997

A.2 Comments