

V&V Reference Report

L2 ASCDS Version : 7.6.7.2

Observation 60261 - L2 Version 001
Chandra X-Ray Center

L2 Processing Date : May 20 2006

Contents

1	Front	2
2	OBI	3
2.1	OBI	3
2.1.1	Images	3
2.1.2	Bias	3
2.1.3	Parameters	4
2.1.4	Events	4
2.2	Compared Parameters	5
2.3	Aspect	6
2.4	Star Slots	8
2.5	FID Slots	8
A	Summary	9
A.1	Status	9
A.2	Comments	9

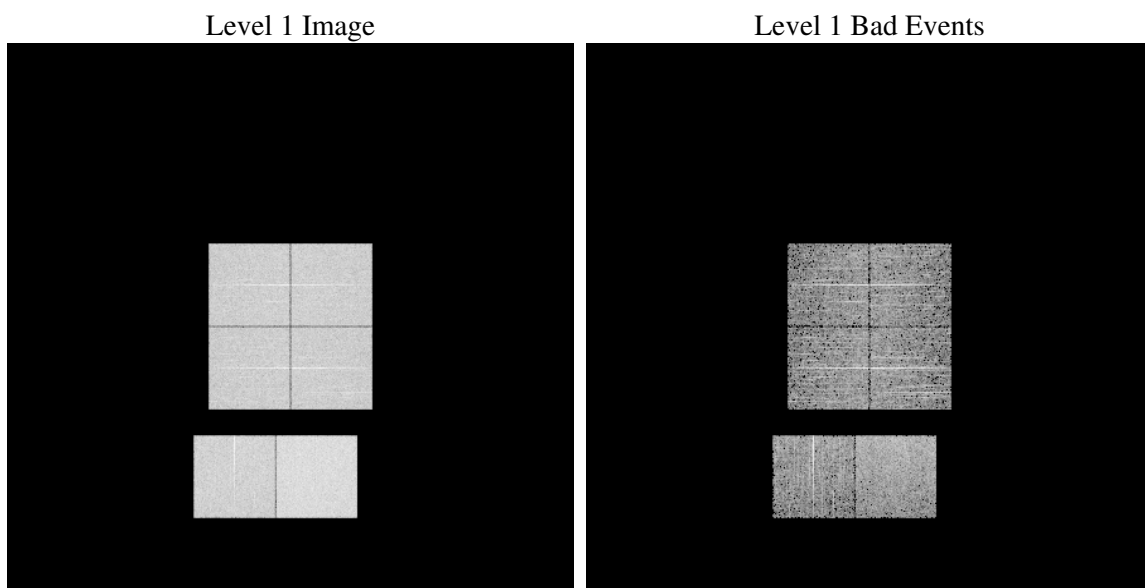
1 Front

seq_num	
obs_id	60261
title	ACIS-012367 diagnostics
observer	CHANDRA engineering request/realtime commanding
object	
dtcycle	0
cycle	P
ra_targ	0.0
dec_targ	0.0
ra_nom	186.99845418336
dec_nom	1.9714546458295
roll_nom	233.96740681715
revision	2
ontime	4607.9999828339
livetime	4549.6507124467
ontime0	3515.7897488177
ontime1	3509.3078571856
ontime2	3308.3671108484
ontime3	3324.57176283
ontime6	3616.2599082291
ontime7	4607.9999828339
l2events	663460

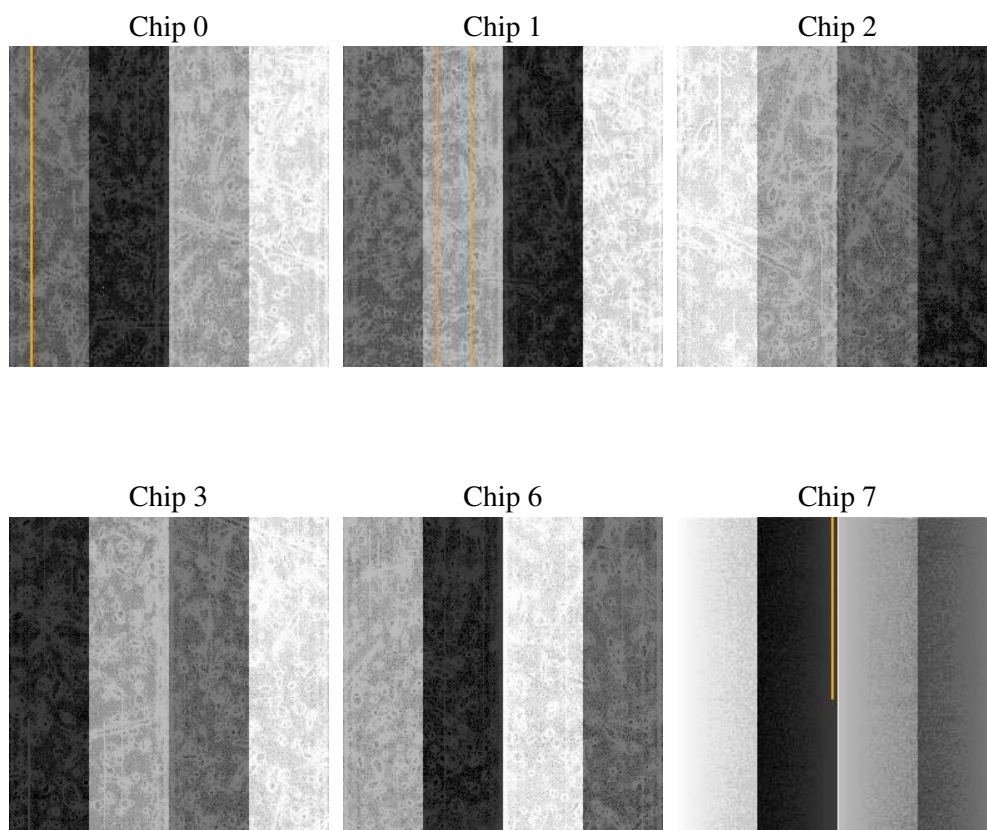
2 OBI

2.1 OBI

2.1.1 Images



2.1.2 Bias



2.1.3 Parameters

obi_num	0
ascdsver	7.6.7.2
caldsver	3.2.2
date	2006-05-20T16:44:55
revision	2

sched_exp_time	0.0
ontime	4611.955103159
ontime0	3519.7448691428
ontime1	3513.2629775107
ontime2	3312.3222311735
ontime3	3328.5268831551
ontime6	3620.2150285542
ontime7	4611.955103159
l1events	848451

2.1.4 Events

	ccd 0	ccd 1	ccd 2	ccd 3	ccd 6	ccd 7
level 1 events	131241	132516	128823	130001	143947	181923
rejected events	22321	22966	24387	25257	25217	31937
rejected %	17%	17%	18%	19%	17%	17%

	ccd 0	ccd 1	ccd 2	ccd 3	ccd 6	ccd 7
grade 0 events	60178	60120	58297	58780	64454	26192
	45%	45%	45%	45%	44%	14%
grade 1 events	314	287	357	399	320	66
	0%	0%	0%	0%	0%	0%
grade 2 events	19096	19474	17729	17906	20502	45157
	14%	14%	13%	13%	14%	24%
grade 3 events	7012	7017	6884	6850	7396	11072
	5%	5%	5%	5%	5%	6%
grade 4 events	6969	6947	6816	6802	7356	11006
	5%	5%	5%	5%	5%	6%
grade 5 events	1474	1557	1389	1609	1648	4014
	1%	1%	1%	1%	1%	2%
grade 6 events	15771	16093	14801	14505	19136	56657
	12%	12%	11%	11%	13%	31%
grade 7 events	20427	21021	22550	23150	23135	27759
	15%	15%	17%	17%	16%	15%

2.2 Compared Parameters

Parameter	Planned	Actual	Parameter	Planned	Actual
Instrument	ACIS	ACIS	Obspar format version number	6	6
Detector	ACIS-012367	ACIS-012367	Obspar file type	PREDICTED	ACTUAL
Grating	NONE	NONE	Obspar update status	NONE	UPDATED
Data mode	FAINT	FAINT	On-chip summing requested	N	N
Observation mode	SECONDARY	SECONDARY	Subarray requested	NONE	NONE
Pointing RA	0	186.9984541833638	Alternating exposures requested	N	N
Pointing Dec	0	1.971454645829527	Primary exposure time	0.000000	3.2
Pointing Roll	0.0	233.9674068171478			
SIM focus pos (mm)	-0.782348	-0.6828225247311905			
SIM defocus (mm)	0	0.8505141146731063			
SIM translation stage pos (mm)	-233.592463	250.466033080201			
SIM translation stage offset (mm)	0	-0.01005468664627074			
Observation start time	199439771.57952	199439770.55452			
Observation start date	2004-04-27T07:56:12	2004-04-27T07:56:10			
Observation end time	199456116.230241	199456115.20524			
Observation end date	2004-04-27T12:28:36	2004-04-27T12:28:35			
Read mode	TIMED	TIMED			

2.3 Aspect

2.4 Star Slots

2.5 FID Slots

A Summary

A.1 Status

V&V Scientist	Beth Sundheim
V&V Date (YYYY-MM-DD)	2006.05.21
V&V Edition	1
V&V Disposition and Status	OK
V&V Charge Time	4.60799998

A.2 Comments