

V&V Reference Report

L2 ASCDS Version : 7.6.7.2

Observation 60221 - L2 Version 001
Chandra X-Ray Center

L2 Processing Date : May 17 2006

Contents

1	Front	2
2	OBI	3
2.1	OBI	3
2.1.1	Images	3
2.1.2	Bias	3
2.1.3	Parameters	4
2.1.4	Events	4
2.2	Compared Parameters	5
2.3	Aspect	6
2.4	Star Slots	8
2.5	FID Slots	8
A	Summary	9
A.1	Status	9
A.2	Comments	9

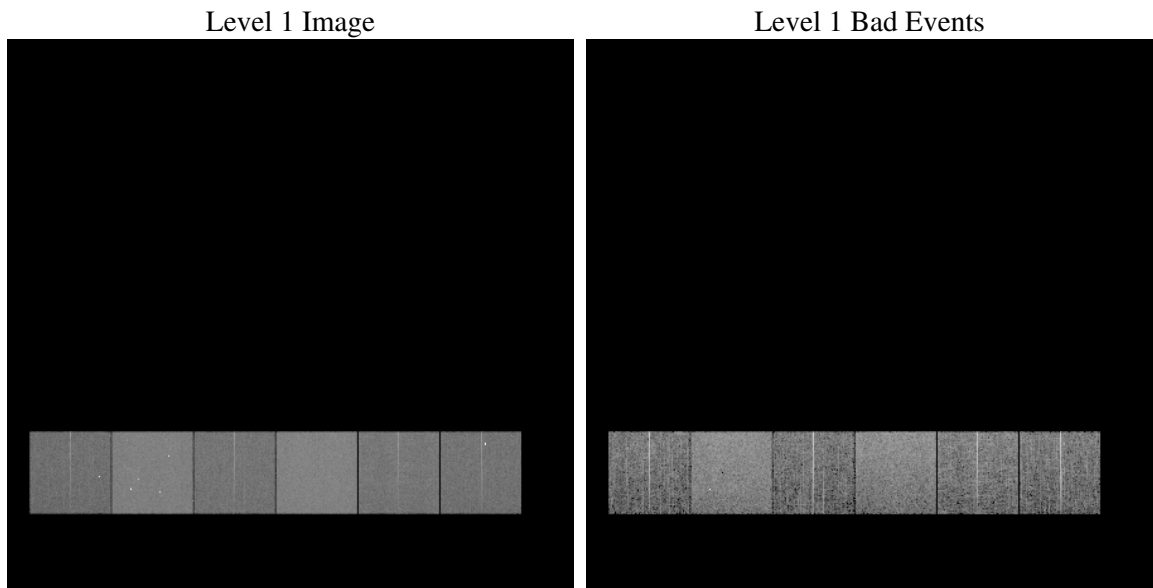
1 Front

seq_num	
obs_id	60221
title	ACIS-456789 diagnostics
observer	CHANDRA engineering request/realtime commanding
object	
dtcycle	0
cycle	P
ra_targ	0.0
dec_targ	0.0
ra_nom	230.02998195936
dec_nom	-30.011807740964
roll_nom	302.82221484842
revision	2
ontime	7798.3999709487
livetime	7699.6519348838
ontime4	4800.4910433888
ontime5	7798.3999709487
ontime6	5258.9333907366
ontime7	7798.3999709487
ontime8	5327.0754981935
ontime9	5184.2677447796
l2events	1064638

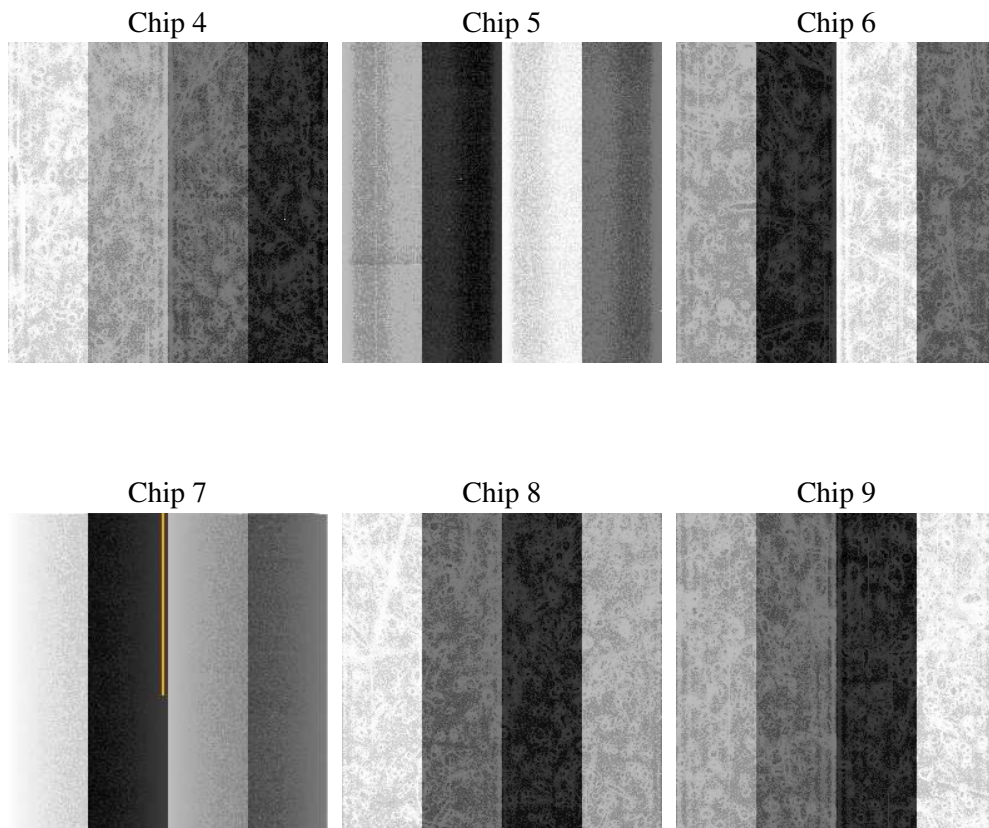
2 OBI

2.1 OBI

2.1.1 Images



2.1.2 Bias



2.1.3 Parameters

obi_num	0
ascdsver	7.6.7.2
caldsver	3.2.2
date	2006-05-17T16:23:30
revision	2

sched_exp_time	0.0
ontime	7801.1078842878
ontime4	4803.198956728
ontime5	7801.1078842878
ontime6	5260.1782505214
ontime7	7801.1078842878
ontime8	5328.2382780015
ontime9	5185.6357245743
l1events	1413941

2.1.4 Events

	ccd 4	ccd 5	ccd 6	ccd 7	ccd 8	ccd 9
level 1 events	182269	291275	208509	308233	220662	202993
rejected events	39202	60713	39375	56997	45348	40166
rejected %	21%	20%	18%	18%	20%	19%

	ccd 4	ccd 5	ccd 6	ccd 7	ccd 8	ccd 9
grade 0 events	83410	29579	92059	44207	95135	90941
	45%	10%	44%	14%	43%	44%
grade 1 events	631	490	457	129	514	550
	0%	0%	0%	0%	0%	0%
grade 2 events	22674	106856	29347	75331	30873	27409
	12%	36%	14%	24%	13%	13%
grade 3 events	9414	7628	10392	18444	11615	10318
	5%	2%	4%	5%	5%	5%
grade 4 events	9562	7481	10709	18168	11505	10215
	5%	2%	5%	5%	5%	5%
grade 5 events	2311	6215	2803	7022	3240	2772
	1%	2%	1%	2%	1%	1%
grade 6 events	18007	79018	26627	95086	26186	23944
	9%	27%	12%	30%	11%	11%
grade 7 events	36260	54008	36115	49846	41594	36844
	19%	18%	17%	16%	18%	18%

2.2 Compared Parameters

Parameter	Planned	Actual	Parameter	Planned	Actual
Instrument	ACIS	ACIS	Obspar format version number	6	6
Detector	ACIS-456789	ACIS-456789	Obspar file type	PREDICTED	ACTUAL
Grating	NONE	NONE	Obspar update status	NONE	UPDATED
Data mode	FAINT	FAINT	On-chip summing requested	N	N
Observation mode	SECONDARY	SECONDARY	Subarray requested	NONE	NONE
Pointing RA	0	230.029981959363	Alternating exposures requested	N	N
Pointing Dec	0	-30.01180774096379	Primary exposure time	0.000000	3.2
Pointing Roll	0.0	302.8222148484208			
SIM focus pos (mm)	-0.684267	-0.6828225247311905			
SIM defocus (mm)	0	0.8505141146731063			
SIM translation stage pos (mm)	-190.132523	250.4635187648994			
SIM translation stage offset (mm)	0	-0.007540371344731511			
Observation start time	201950683.440336	201950682.41533			
Observation start date	2004-05-26T09:24:43	2004-05-26T09:24:42			
Observation end time	201969434.791165	201969433.76616			
Observation end date	2004-05-26T14:37:15	2004-05-26T14:37:13			
Read mode	TIMED	TIMED			

2.3 Aspect

2.4 Star Slots

2.5 FID Slots

A Summary

A.1 Status

V&V Scientist	Jen Lauer
V&V Date (YYYY-MM-DD)	2006.05.17
V&V Edition	1
V&V Disposition and Status	OK
V&V Charge Time	7.79839997

A.2 Comments