

V&V Reference Report

L2 ASCDS Version : 8.4.5

Observation 60201 - L2 Version 3
Chandra X-Ray Center

L2 Processing Date : Dec 3 2012

Contents

1	Front	2
2	OBI	3
2.1	OBI	3
2.1.1	Images	3
2.1.2	Bias	3
2.1.3	Parameters	4
2.1.4	Events	4
2.2	Compared Parameters	5
2.3	Star Slots	6
2.4	FID Slots	6
A	Summary	7
A.1	Status	7
A.2	Comments	7

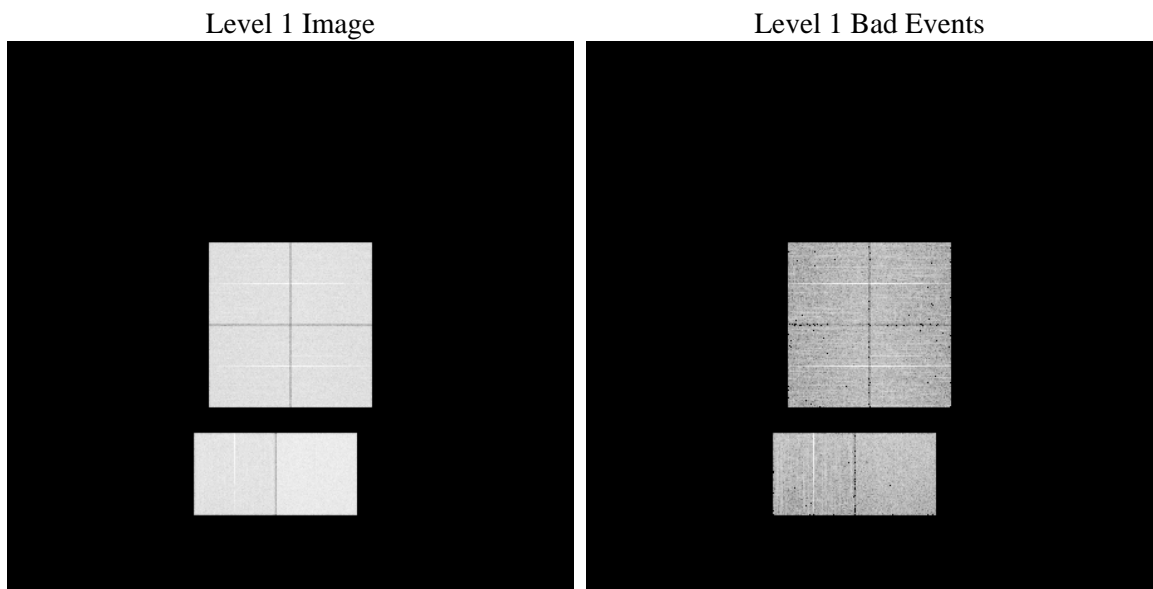
1 Front

seq_num	 	Sequence number
obs_id	60201	Observation id
title	ACIS-012367 diagnostics	Proposal title
observer	CHANDRA engineering request/realtime commanding	Principal investig
object	 	Source name
dtcycle	0	
cycle	P	events from which exps? Prim/Second/Both
ra_targ	0.0	Observer's specified target RA [deg]
dec_targ	0.0	Observer's specified target Dec [deg]
ra_nom	305.97702581464	Nominal RA [deg]
dec_nom	-14.981945325718	Nominal Dec [deg]
roll_nom	107.93407878825	Nominal Roll [deg]
revision	3	Processing version of data
ontime	7799.6274855435	Sum of GTIs [s]
livetime	7700.8639059497	Livetime [s]
ontime0	5772.7459073663	Sum of GTIs [s]
ontime1	5967.2057385743	Sum of GTIs [s]
ontime2	5562.0822288692	Sum of GTIs [s]
ontime3	5683.2265907824	Sum of GTIs [s]
ontime6	6103.3265323043	Sum of GTIs [s]
ontime7	7799.6274855435	Sum of GTIs [s]
l2events	1105978	Number of level 2 events

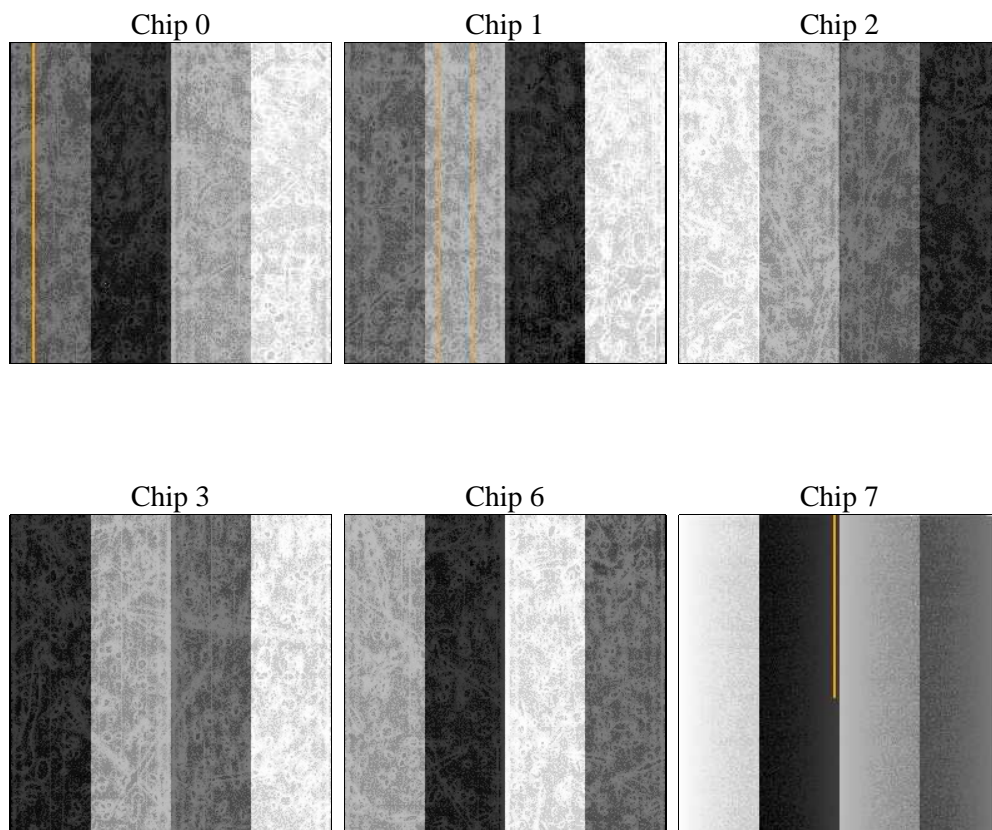
2 OBI

2.1 OBI

2.1.1 Images



2.1.2 Bias



2.1.3 Parameters

obi_num	0	Obi number	sched_exp_time	0.0	[s] Scheduled observation exposure time
ascdsver	8.4.5	Processing system revision	ontime	7799.6274855435	Sum of GTIs [s]
caldsver	4.5.2	 	ontime0	5772.7459073663	Sum of GTIs [s]
date	2012-12-03T08:09:48	Date and time of file creation	ontime1	5967.2057385743	Sum of GTIs [s]
revision	3	Processing version of data	ontime2	5562.0822288692	Sum of GTIs [s]
			ontime3	5683.2265907824	Sum of GTIs [s]
			ontime6	6103.3265323043	Sum of GTIs [s]
			ontime7	7799.6274855435	Sum of GTIs [s]
			l1events	1415602	Number of level 1 events

2.1.4 Events

	ccd 0	ccd 1	ccd 2	ccd 3	ccd 6	ccd 7		ccd 0	ccd 1	ccd 2	ccd 3	ccd 6	ccd 7
level 1 events	216050	224015	210947	216981	239880	307729	grade 0 events	96176	100362	95605	97867	105671	63629
rejected events	40548	41178	39720	42796	44478	46843		44%	44%	45%	45%	44%	20%
rejected %	18%	18%	18%	19%	18%	15%	grade 1 events	517	479	596	600	568	213
								0%	0%	0%	0%	0%	0%
							grade 2 events	30753	32425	29112	29592	33961	57758
								14%	14%	13%	13%	14%	18%
							grade 3 events	11580	11471	11121	11358	12385	26120
								5%	5%	5%	5%	5%	8%
							grade 4 events	11324	11680	11211	11332	12086	26086
								5%	5%	5%	5%	5%	8%
							grade 5 events	2644	2742	2405	2735	2958	8630
								1%	1%	1%	1%	1%	2%
							grade 6 events	25669	26899	24178	24036	31299	87293
								11%	12%	11%	11%	13%	28%
							grade 7 events	37387	37957	36719	39461	40952	38000
								17%	16%	17%	18%	17%	12%

2.2 Compared Parameters

Parameter	Planned	Actual	Parameter	Planned	Actual
Instrument	ACIS	ACIS	Obspar format version number	7	7
Detector	ACIS-012367	ACIS-012367	Obspar file type	PREDICTED	ACTUAL
Grating	NONE	NONE	Obspar update status	NONE	UPDATED
Data mode	FAINT	FAINT	On-chip summing requested	N	N
Observation mode	SECONDARY	SECONDARY	Subarray requested	NONE	NONE
[deg] Pointing RA	0	305.9770258146377	Alternating exposures requested	N	N
[deg] Pointing Dec	0	-14.9819453257182	[s] Primary exposure time	0.000000	3.2
[deg] Pointing Roll	0.0	107.9340787882499			
[mm] SIM focus pos	-0.782348	-0.7809083437167272			
[mm] SIM defocus	0	0.7524282956875696			
[mm] SIM translation stage pos	-233.592463	250.466033080201			
[mm] SIM translation stage offset	0	-0.01005468664627074			
[s] Observation start time (MET)	203320329.500863	203320328.47586			
Observation start date	2004-06-11T05:52:10	2004-06-11T05:52:08			
[s] Observation end time (MET)	203341126.751784	203341125.72678			
Observation end date	2004-06-11T11:38:47	2004-06-11T11:38:45			
Read mode	TIMED	TIMED			

2.3 Star Slots

2.4 FID Slots

A Summary

A.1 Status

V&V Scientist	Jen Lauer
V&V Date (YYYY-MM-DD)	2012.12.18
V&V Edition	1
V&V Disposition and Status	OK
V&V Charge Time	7.7996274855435

A.2 Comments