

V&V Reference Report

L2 ASCDS Version : 7.6.7.2

Observation 60151 - L2 Version 001
Chandra X-Ray Center

L2 Processing Date : Apr 29 2006

Contents

1	Front	2
2	OBI	3
2.1	OBI	3
2.1.1	Images	3
2.1.2	Bias	3
2.1.3	Parameters	4
2.1.4	Events	4
2.2	Compared Parameters	5
2.3	Aspect	6
2.4	Star Slots	8
2.5	FID Slots	8
A	Summary	9
A.1	Status	9
A.2	Comments	9

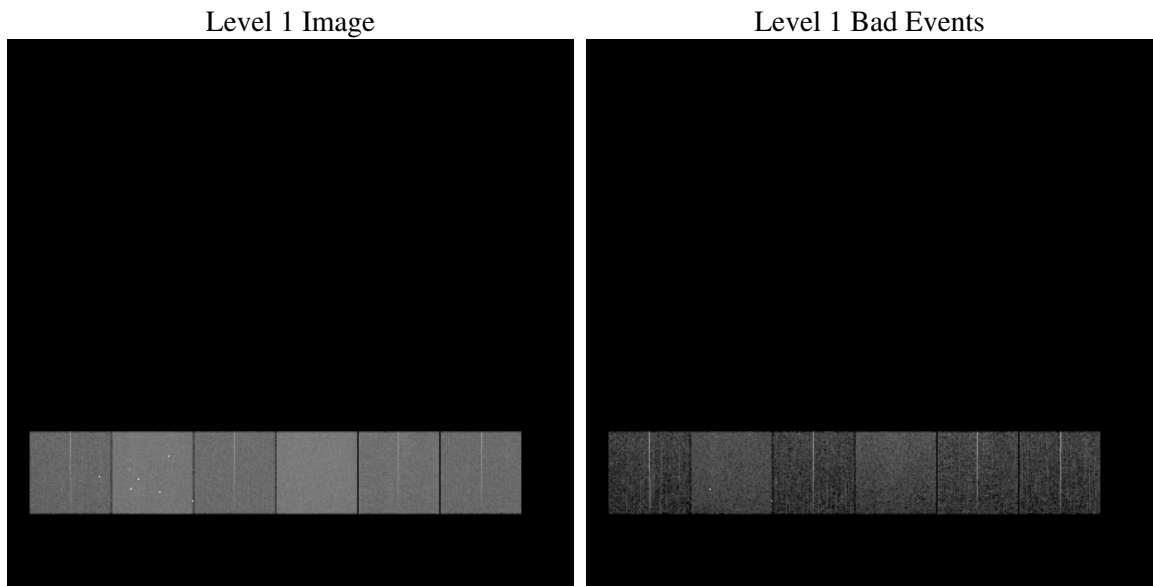
1 Front

seq_num	
obs_id	60151
title	ACIS-456789 diagnostics
observer	CHANDRA engineering request/realtime commanding
object	
dtcycle	0
cycle	P
ra_targ	0.0
dec_targ	0.0
ra_nom	273.9955415367
dec_nom	-14.028279938785
roll_nom	228.38017991073
revision	2
ontime	8275.1999691725
livetime	8170.4144044356
ontime4	5236.5988861024
ontime5	8275.1999691725
ontime6	5744.0004730523
ontime7	8275.1999691725
ontime8	6011.2339172065
ontime9	5680.4506647885
l2events	1110307

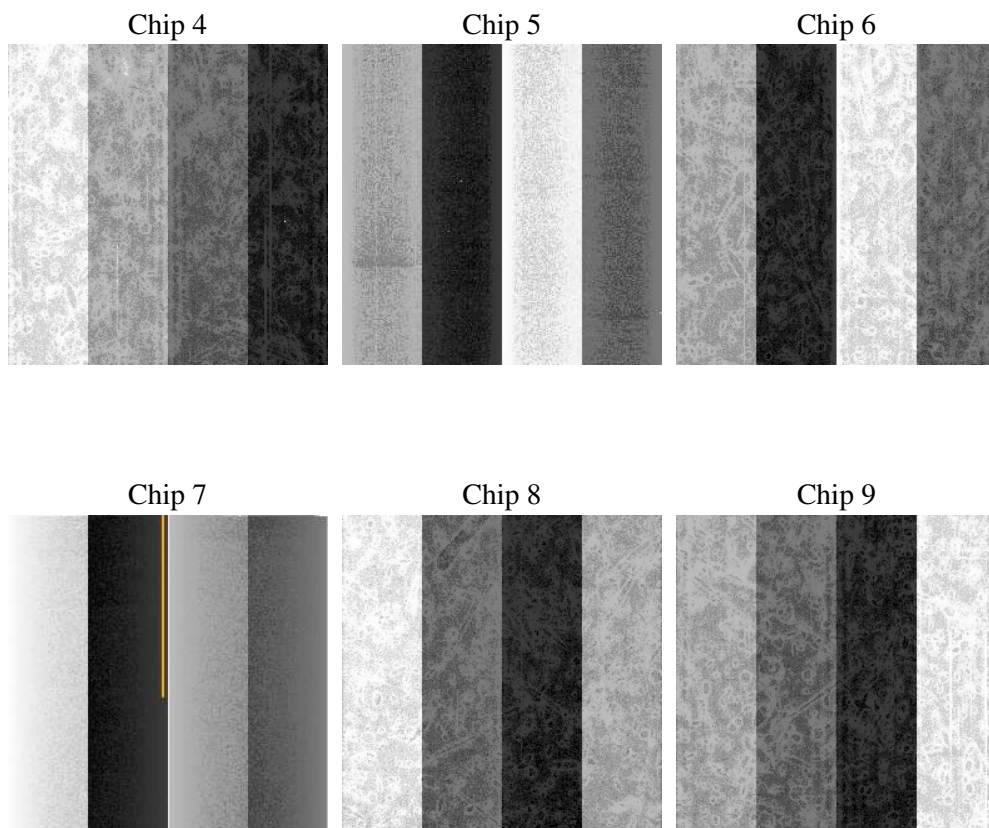
2 OBI

2.1 OBI

2.1.1 Images



2.1.2 Bias



2.1.3 Parameters

obi_num	0
ascdsver	7.6.7.2
caldsver	3.2.1
date	2006-04-29T21:39:16
revision	2

sched_exp_time	0.0
ontime	8277.5238667428
ontime4	5237.4898235202
ontime5	8277.5238667428
ontime6	5746.3243706226
ontime7	8277.5238667428
ontime8	6012.0838146508
ontime9	5681.5057622194
l1events	1498221

2.1.4 Events

	ccd 4	ccd 5	ccd 6	ccd 7	ccd 8	ccd 9
level 1 events	193222	309368	221287	320068	240624	213652
rejected events	42666	69126	44176	63159	50070	44873
rejected %	22%	22%	19%	19%	20%	21%

	ccd 4	ccd 5	ccd 6	ccd 7	ccd 8	ccd 9
grade 0 events	88452	29752	96340	42824	103712	93307
	45%	9%	43%	13%	43%	43%
grade 1 events	688	159	505	128	577	567
	0%	0%	0%	0%	0%	0%
grade 2 events	23206	110380	30741	78446	33115	28533
	12%	35%	13%	24%	13%	13%
grade 3 events	9836	6986	11019	18046	12608	10819
	5%	2%	4%	5%	5%	5%
grade 4 events	9930	6601	10812	17658	12525	10892
	5%	2%	4%	5%	5%	5%
grade 5 events	2531	6803	2943	7281	3544	3023
	1%	2%	1%	2%	1%	1%
grade 6 events	19132	86523	28199	99935	28594	25228
	9%	27%	12%	31%	11%	11%
grade 7 events	39447	62164	40728	55750	45949	41283
	20%	20%	18%	17%	19%	19%

2.2 Compared Parameters

Parameter	Planned	Actual	Parameter	Planned	Actual
Instrument	ACIS	ACIS	Obspar format version number	6	6
Detector	ACIS-456789	ACIS-456789	Obspar file type	PREDICTED	ACTUAL
Grating	NONE	NONE	Obspar update status	NONE	UPDATED
Data mode	FAINT	FAINT	On-chip summing requested	N	N
Observation mode	SECONDARY	SECONDARY	Subarray requested	NONE	NONE
Pointing RA	0	273.9955415367018	Alternating exposures requested	N	N
Pointing Dec	0	-14.02827993878453	Primary exposure time	3.2	3.2
Pointing Roll	0.0	228.3801799107328			
SIM focus pos (mm)	-0.684267	-0.6828225247311905			
SIM defocus (mm)	0	0.8505141146731063			
SIM translation stage pos (mm)	-190.132523	250.466033080201			
SIM translation stage offset (mm)	0	-0.01005468664627074			
Observation start time	205414898.643632	205414897.61863			
Observation start date	2004-07-05T11:41:39	2004-07-05T11:41:37			
Observation end time	205439234.194711	205439233.16971			
Observation end date	2004-07-05T18:27:14	2004-07-05T18:27:13			
Read mode	TIMED	TIMED			

2.3 Aspect

2.4 Star Slots

2.5 FID Slots

A Summary

A.1 Status

V&V Scientist	Jen Lauer
V&V Date (YYYY-MM-DD)	2006.04.30
V&V Edition	1
V&V Disposition and Status	OK
V&V Charge Time	8.27519996

A.2 Comments

The ACIS focal plane temperature increases by more than a degree over the course of the observation and is above calibration limits for the last two ksec.