

V&V Reference Report

L2 ASCDS Version : 7.6.7.2

Observation 60121 - L2 Version 001
Chandra X-Ray Center

L2 Processing Date : Apr 28 2006

Contents

1	Front	2
2	OBI	3
2.1	OBI	3
2.1.1	Images	3
2.1.2	Bias	3
2.1.3	Parameters	4
2.1.4	Events	4
2.2	Compared Parameters	5
2.3	Aspect	6
2.4	Star Slots	8
2.5	FID Slots	8
A	Summary	9
A.1	Status	9
A.2	Comments	9

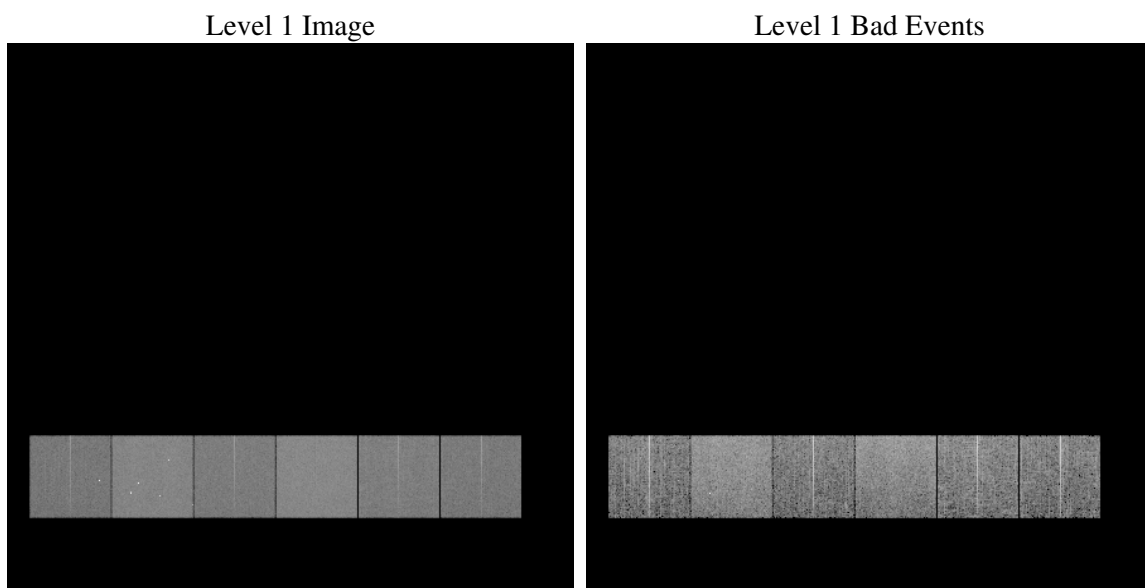
1 Front

seq_num	
obs_id	60121
title	ACIS-456789 diagnostics
observer	CHANDRA engineering request/realtime commanding
object	
dtcycle	0
cycle	P
ra_targ	0.0
dec_targ	0.0
ra_nom	212.50647101345
dec_nom	-2.0278979294792
roll_nom	250.12922155484
revision	2
ontime	7800.3164291382
livetime	7701.5441257258
ontime4	5240.0760730505
ontime5	7800.3574691415
ontime6	5706.7351095378
ontime7	7800.3164291382
ontime8	5810.5277893543
ontime9	5447.3344678283
l2events	1077081

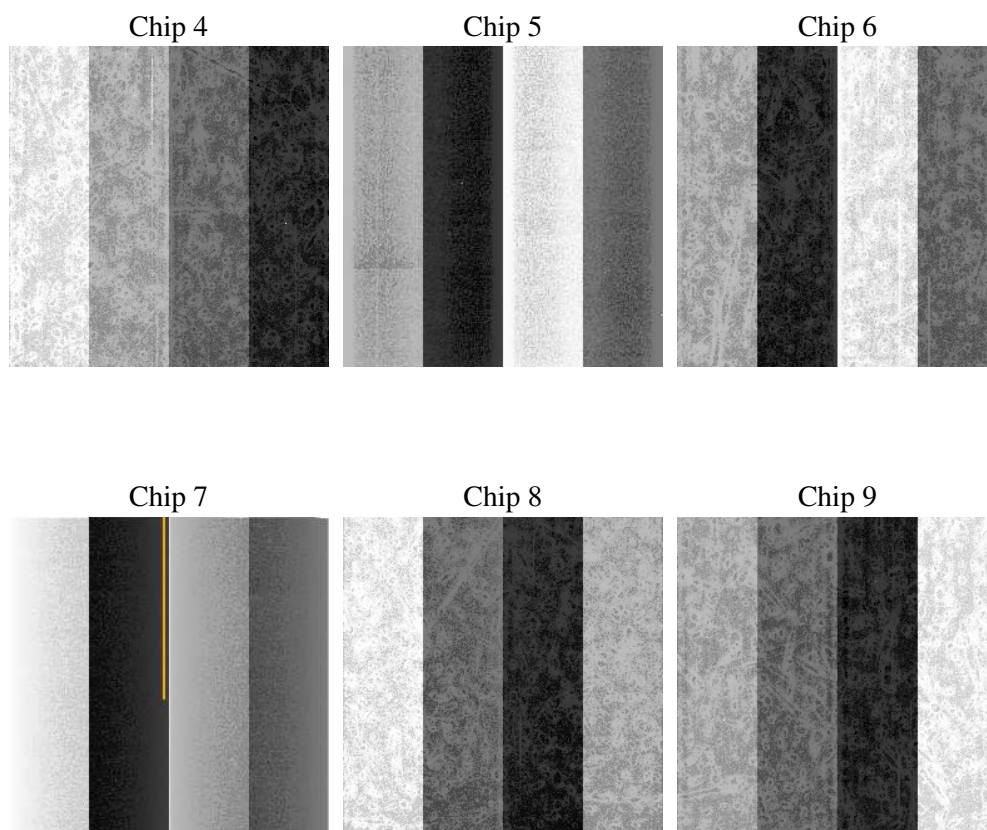
2 OBI

2.1 OBI

2.1.1 Images



2.1.2 Bias



2.1.3 Parameters

obi_num	0
ascdsver	7.6.7.2
caldsver	3.2.1
date	2006-04-28T10:57:36
revision	2

sched_exp_time	0.0
ontime	7801.0873464644
ontime4	5240.7238703668
ontime5	7801.0873464644
ontime6	5707.4239468575
ontime7	7801.0873464644
ontime8	5811.1345466971
ontime9	5448.1464251578
l1events	1414201

2.1.4 Events

	ccd 4	ccd 5	ccd 6	ccd 7	ccd 8	ccd 9
level 1 events	191650	278299	216634	295582	229844	202192
rejected events	38614	56935	38156	53073	44721	39350
rejected %	20%	20%	17%	17%	19%	19%

	ccd 4	ccd 5	ccd 6	ccd 7	ccd 8	ccd 9
grade 0 events	88799	28441	96841	42654	100713	89631
	46%	10%	44%	14%	43%	44%
grade 1 events	634	374	443	107	523	541
	0%	0%	0%	0%	0%	0%
grade 2 events	24245	102537	30798	73332	32230	27969
	12%	36%	14%	24%	14%	13%
grade 3 events	10140	7242	11186	17793	12047	10384
	5%	2%	5%	6%	5%	5%
grade 4 events	10147	6991	11091	17562	12086	10365
	5%	2%	5%	5%	5%	5%
grade 5 events	2301	5817	2685	6446	3120	2742
	1%	2%	1%	2%	1%	1%
grade 6 events	19705	76153	28562	91168	28047	24493
	10%	27%	13%	30%	12%	12%
grade 7 events	35679	50744	35028	46520	41078	36067
	18%	18%	16%	15%	17%	17%

2.2 Compared Parameters

Parameter	Planned	Actual	Parameter	Planned	Actual
Instrument	ACIS	ACIS	Obspar format version number	6	6
Detector	ACIS-456789	ACIS-456789	Obspar file type	PREDICTED	ACTUAL
Grating	NONE	NONE	Obspar update status	NONE	UPDATED
Data mode	FAINT	FAINT	On-chip summing requested	N	N
Observation mode	SECONDARY	SECONDARY	Subarray requested	NONE	NONE
Pointing RA	0	212.5064710134526	Alternating exposures requested	N	N
Pointing Dec	0	-2.027897929479225	Primary exposure time	3.2	3.2
Pointing Roll	0.0	250.1292215548432			
SIM focus pos (mm)	-0.684267	-0.6828225247311905			
SIM defocus (mm)	0	0.8505141146731063			
SIM translation stage pos (mm)	-190.132523	250.466033080201			
SIM translation stage offset (mm)	0	-0.01005468664627074			
Observation start time	206981029.013156	206981027.98815			
Observation start date	2004-07-23T14:43:49	2004-07-23T14:43:47			
Observation end time	206996059.613823	206996058.58882			
Observation end date	2004-07-23T18:54:20	2004-07-23T18:54:18			
Read mode	TIMED	TIMED			

2.3 Aspect

2.4 Star Slots

2.5 FID Slots

A Summary

A.1 Status

V&V Scientist	Jen Lauer
V&V Date (YYYY-MM-DD)	2006.04.28
V&V Edition	1
V&V Disposition and Status	OK
V&V Charge Time	7.80031642

A.2 Comments