

# V&V Reference Report

## L2 ASCDS Version : 7.6.7.1

Observation 59981 - L2 Version 001  
Chandra X-Ray Center

L2 Processing Date : Apr 13 2006

## Contents

<b>1</b>	<b>Front</b>	<b>2</b>
<b>2</b>	<b>OBI</b>	<b>3</b>
2.1	OBI . . . . .	3
2.1.1	Images . . . . .	3
2.1.2	Bias . . . . .	3
2.1.3	Parameters . . . . .	4
2.1.4	Events . . . . .	4
2.2	Compared Parameters . . . . .	5
2.3	Aspect . . . . .	6
2.4	Star Slots . . . . .	8
2.5	FID Slots . . . . .	8
<b>A</b>	<b>Summary</b>	<b>9</b>
A.1	Status . . . . .	9
A.2	Comments . . . . .	9

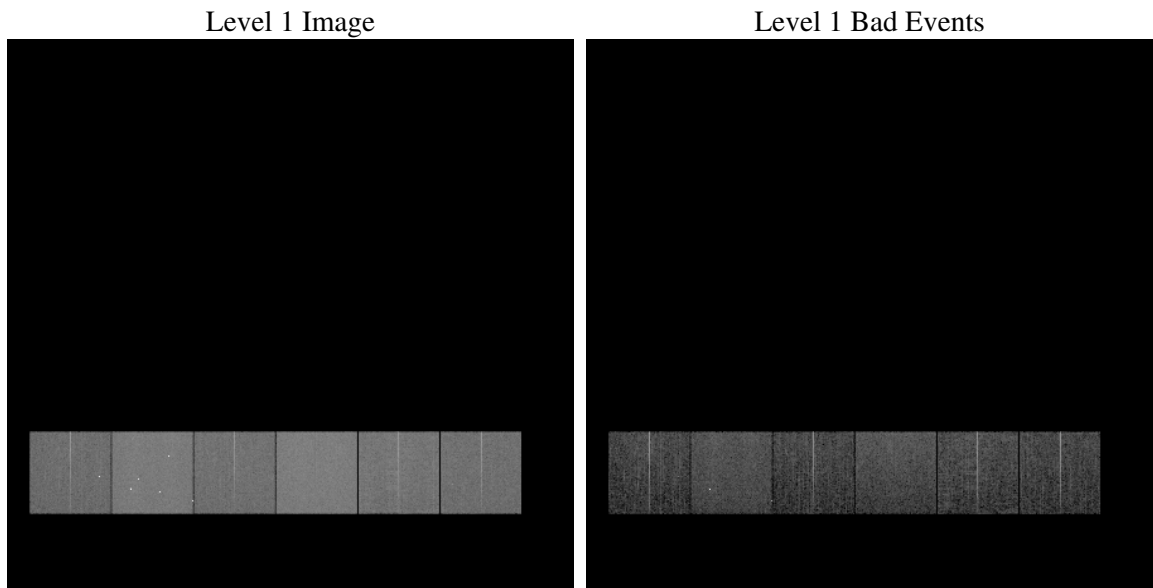
# 1 Front

seq_num	&#160
obs_id	59981
title	ACIS-456789 diagnostics
observer	CHANDRA engineering request/realtime commanding
object	&#160
dtcycle	0
cycle	P
ra_targ	0.0
dec_targ	0.0
ra_nom	37.972066581262
dec_nom	21.987778017253
roll_nom	172.55213799388
revision	2
ontime	7852.26108253
livetime	7752.831024639
ontime4	5288.7735717297
ontime5	7852.3021225333
ontime6	5729.5056877434
ontime7	7852.26108253
ontime8	5979.1426689327
ontime9	5638.6352989078
l2events	1016461

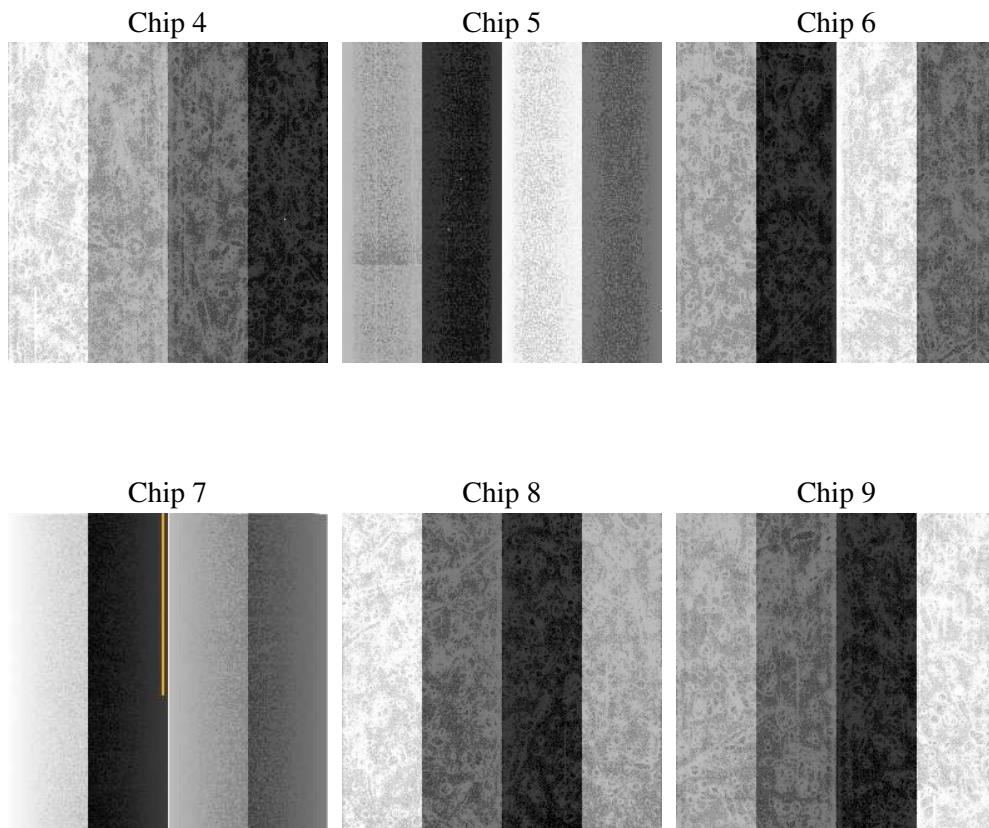
## 2 OBI

### 2.1 OBI

#### 2.1.1 Images



#### 2.1.2 Bias



### 2.1.3 Parameters

obi_num	0
ascdsver	7.6.7.1
caldsver	3.2.1
date	2006-04-13T19:59:03
revision	2

sched_exp_time	0.0
ontime	7852.9546318948
ontime4	5289.3440010846
ontime5	7852.9546318948
ontime6	5730.1171571016
ontime7	7852.9546318948
ontime8	5979.6720583141
ontime9	5639.3698882759
l1events	1422253

### 2.1.4 Events

	ccd 4	ccd 5	ccd 6	ccd 7	ccd 8	ccd 9
level 1 events	191771	285059	212534	292920	235658	204311
rejected events	50233	68182	49101	62569	56447	48902
rejected %	26%	23%	23%	21%	23%	23%

	ccd 4	ccd 5	ccd 6	ccd 7	ccd 8	ccd 9
grade 0 events	82579	26244	88745	37229	96242	84927
	43%	9%	41%	12%	40%	41%
grade 1 events	711	272	512	116	573	623
	0%	0%	0%	0%	0%	0%
grade 2 events	21980	99525	28140	70801	31637	26385
	11%	34%	13%	24%	13%	12%
grade 3 events	9417	6480	10247	15675	12137	10255
	4%	2%	4%	5%	5%	5%
grade 4 events	9401	6345	10035	15464	11872	10032
	4%	2%	4%	5%	5%	4%
grade 5 events	2660	6958	3033	7156	3614	3123
	1%	2%	1%	2%	1%	1%
grade 6 events	18161	78283	26266	91182	27323	23810
	9%	27%	12%	31%	11%	11%
grade 7 events	46862	60952	45556	55297	52260	45156
	24%	21%	21%	18%	22%	22%

## 2.2 Compared Parameters

Parameter	Planned	Actual	Parameter	Planned	Actual
Instrument	ACIS	ACIS	Obspar format version number	6	6
Detector	ACIS-456789	ACIS-456789	Obspar file type	PREDICTED	ACTUAL
Grating	NONE	NONE	Obspar update status	NONE	UPDATED
Data mode	FAINT	FAINT	On-chip summing requested	N	N
Observation mode	SECONDARY	SECONDARY	Subarray requested	NONE	NONE
Pointing RA	0	37.97206658126171	Alternating exposures requested	N	N
Pointing Dec	0	21.98777801725307	Primary exposure time	3.2	3.2
Pointing Roll	0.0	172.5521379938809			
SIM focus pos (mm)	-0.684267	-0.6828225247311905			
SIM defocus (mm)	0	0.8505141146731063			
SIM translation stage pos (mm)	-190.132523	250.466033080201			
SIM translation stage offset (mm)	0	-0.01005468664627074			
Observation start time	215697643.75207	215697642.72706			
Observation start date	2004-11-01T12:00:44	2004-11-01T12:00:42			
Observation end time	215720757.503108	215720756.47809			
Observation end date	2004-11-01T18:25:58	2004-11-01T18:25:56			
Read mode	TIMED	TIMED			

## 2.3 Aspect



## **2.4 Star Slots**

## **2.5 FID Slots**



## A Summary

### A.1 Status

V&V Scientist	Jen Lauer
V&V Date (YYYY-MM-DD)	2006.04.14
V&V Edition	1
V&V Disposition and Status	OK
V&V Charge Time	7.85226108

### A.2 Comments