

V&V Reference Report

L2 ASCDS Version : 7.6.7.1

Observation 59461 - L2 Version 002
Chandra X-Ray Center

L2 Processing Date : Mar 23 2006

Contents

1	Front	2
2	OBI	3
2.1	OBI	3
2.1.1	Images	3
2.1.2	Bias	3
2.1.3	Parameters	4
2.1.4	Events	4
2.2	Compared Parameters	5
2.3	Aspect	6
2.4	Star Slots	8
2.5	FID Slots	8
A	Summary	9
A.1	Status	9
A.2	Comments	9

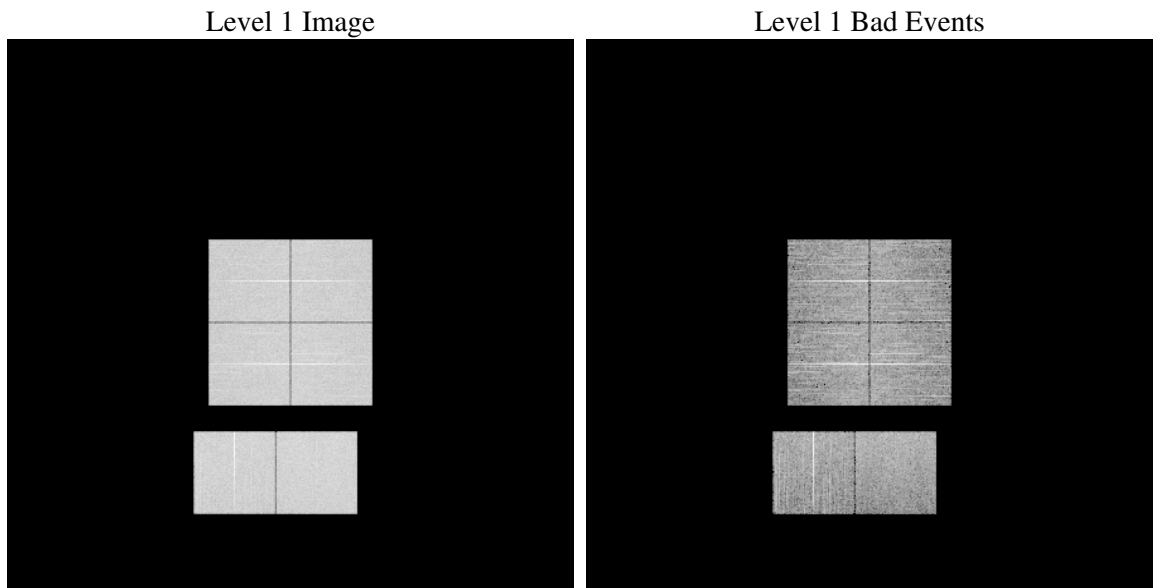
1 Front

seq_num	
obs_id	59461
title	ACIS-012367 diagnostics
observer	CHANDRA engineering request/realtime commanding
object	
dtcycle	0
cycle	P
ra_targ	0.0
dec_targ	0.0
ra_nom	15.77856956212
dec_nom	4.5183411682162
roll_nom	109.32506552784
revision	2
ontime	7801.5999709368
livetime	7702.8114145452
ontime0	7733.5393147767
ontime1	7801.5999709368
ontime2	7662.2376281023
ontime3	7788.6360297501
ontime6	7801.5999709368
ontime7	7801.5999709368
l2events	1015692

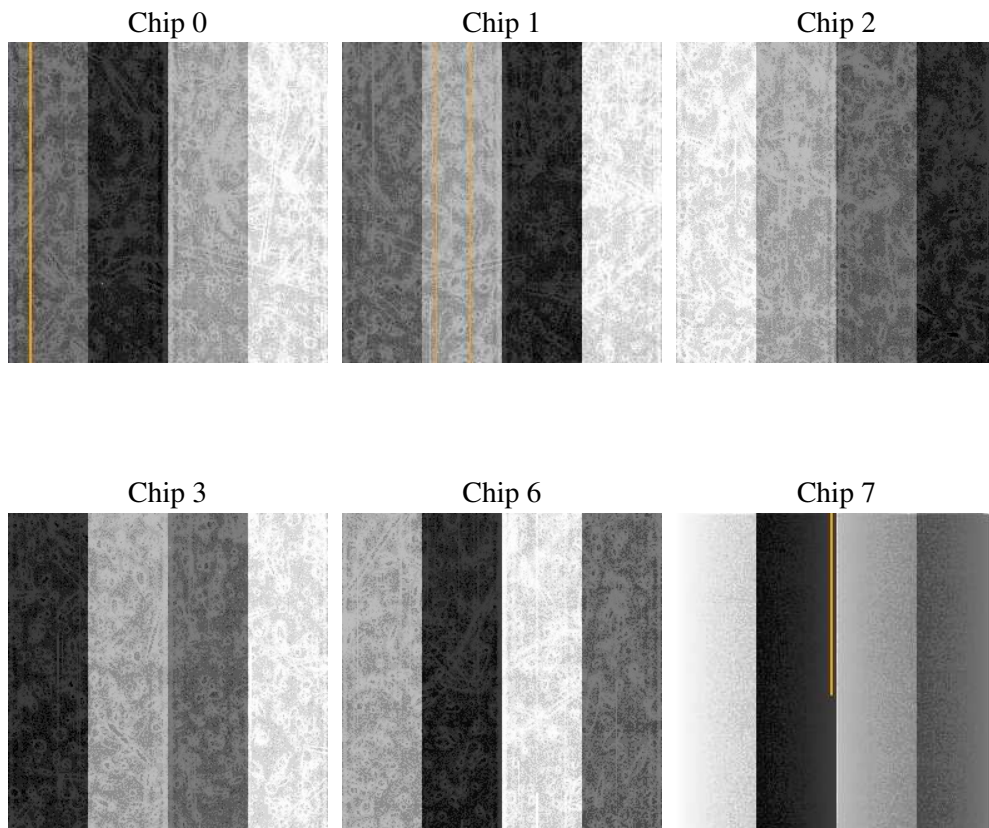
2 OBI

2.1 OBI

2.1.1 Images



2.1.2 Bias



2.1.3 Parameters

obi_num	0
ascdsver	7.6.7.1
caldsver	3.2.1
date	2006-03-24T01:32:09
revision	2

sched_exp_time	0.0
ontime	7804.3552683294
ontime0	7736.2946121693
ontime1	7804.3552683294
ontime2	7664.9929254949
ontime3	7791.3913271427
ontime6	7804.3552683294
ontime7	7804.3552683294
l1events	1398177

2.1.4 Events

	ccd 0	ccd 1	ccd 2	ccd 3	ccd 6	ccd 7
level 1 events	225494	225612	228132	233149	240553	245237
rejected events	53289	51773	55746	56359	57305	55075
rejected %	23%	22%	24%	24%	23%	22%

	ccd 0	ccd 1	ccd 2	ccd 3	ccd 6	ccd 7
grade 0 events	94442	94865	96055	98957	99322	32347
	41%	42%	42%	42%	41%	13%
grade 1 events	584	471	630	596	469	88
	0%	0%	0%	0%	0%	0%
grade 2 events	30239	30978	29525	30193	31818	57189
	13%	13%	12%	12%	13%	23%
grade 3 events	11234	11190	11356	11391	11361	13568
	4%	4%	4%	4%	4%	5%
grade 4 events	11047	11105	11295	11750	11395	13578
	4%	4%	4%	5%	4%	5%
grade 5 events	3085	3337	3033	3390	3627	6442
	1%	1%	1%	1%	1%	2%
grade 6 events	25312	25771	24234	24563	29425	73570
	11%	11%	10%	10%	12%	29%
grade 7 events	49551	47895	52004	52309	53136	48455
	21%	21%	22%	22%	22%	19%

2.2 Compared Parameters

Parameter	Planned	Actual	Parameter	Planned	Actual
Instrument	ACIS	ACIS	Obspar format version number	6	6
Detector	ACIS-012367	ACIS-012367	Obspar file type	PREDICTED	ACTUAL
Grating	NONE	NONE	Obspar update status	NONE	UPDATED
Data mode	FAINT	FAINT	On-chip summing requested	N	N
Observation mode	SECONDARY	SECONDARY	Subarray requested	NONE	NONE
Pointing RA	0	15.77856956211971	Alternating exposures requested	N	N
Pointing Dec	0	4.518341168216164	Primary exposure time	3.2	3.2
Pointing Roll	0.0	109.3250655278372			
SIM focus pos (mm)	-0.782348	-0.6828225247311905			
SIM defocus (mm)	0	0.8505141146731063			
SIM translation stage pos (mm)	-233.592463	250.466033080201			
SIM translation stage offset (mm)	0	-0.01005468664627074			
Observation start time	242392382.114035	242392381.08906			
Observation start date	2005-09-06T11:13:02	2005-09-06T11:13:01			
Observation end time	242406506.614684	242406505.58971			
Observation end date	2005-09-06T15:08:27	2005-09-06T15:08:25			
Read mode	TIMED	TIMED			

2.3 Aspect

2.4 Star Slots

2.5 FID Slots

A Summary

A.1 Status

V&V Scientist	Jen Lauer
V&V Date (YYYY-MM-DD)	2006.03.24
V&V Edition	1
V&V Disposition and Status	OK
V&V Charge Time	7.80159997

A.2 Comments