

# V&V Reference Report

## L2 ASCDS Version : 8.4.3.1

Observation 58771 - L2 Version 2  
Chandra X-Ray Center

L2 Processing Date : Apr 10 2012

## Contents

<b>1</b>	<b>Front</b>	<b>2</b>
<b>2</b>	<b>OBI</b>	<b>3</b>
2.1	OBI . . . . .	3
2.1.1	Images . . . . .	3
2.1.2	Bias . . . . .	3
2.1.3	Parameters . . . . .	4
2.1.4	Events . . . . .	4
2.2	Compared Parameters . . . . .	5
2.3	Star Slots . . . . .	6
2.4	FID Slots . . . . .	6
<b>A</b>	<b>Summary</b>	<b>7</b>
A.1	Status . . . . .	7
A.2	Comments . . . . .	7

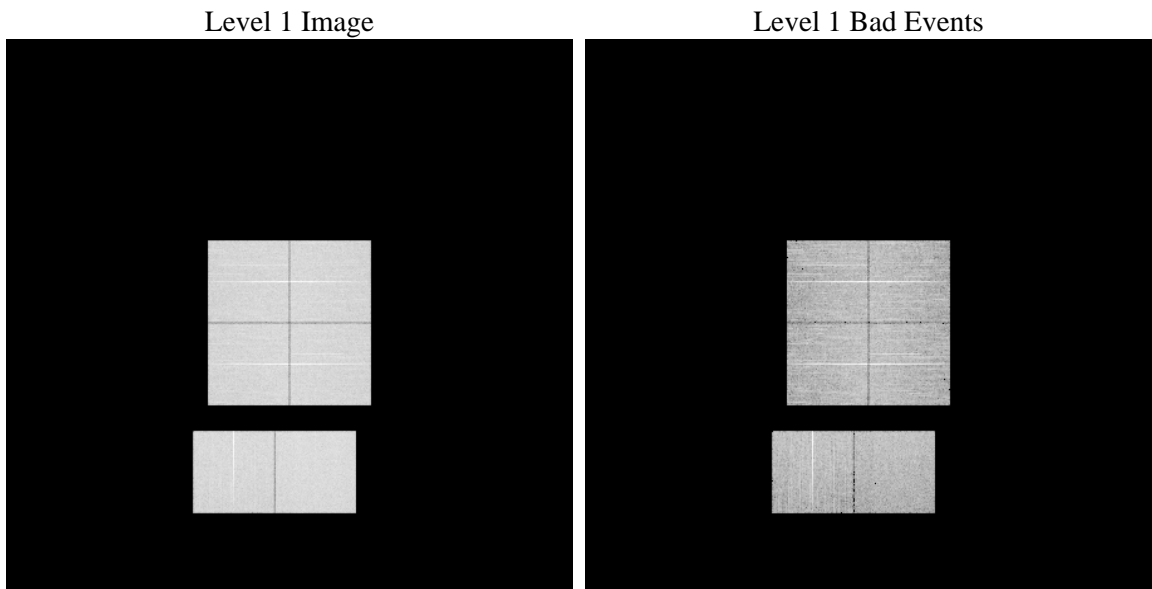
# 1 Front

seq_num	&#160	Sequence number
obs_id	58771	Observation id
title	ACIS-012367 diagnostics	Proposal title
observer	CHANDRA engineering request/realtime commanding	Principal investig
object	&#160	Source name
dtcycle	0	&#160
cycle	P	events from which exps? Prim/Second/Both
ra_targ	0.0	Observer's specified target RA [deg]
dec_targ	0.0	Observer's specified target Dec [deg]
ra_nom	334.52292728021	Nominal RA [deg]
dec_nom	-6.0206083449907	Nominal Dec [deg]
roll_nom	283.12607643607	Nominal Roll [deg]
revision	2	Processing version of data
ontime	8277.5418697	Sum of GTIs [s]
livetime	8172.7266504085	Livetime [s]
ontime0	8277.5210651159	Sum of GTIs [s]
ontime1	8277.4800251126	Sum of GTIs [s]
ontime2	8277.4389851093	Sum of GTIs [s]
ontime3	8277.541849792	Sum of GTIs [s]
ontime6	8277.397945106	Sum of GTIs [s]
ontime7	8277.5418697	Sum of GTIs [s]
l2events	859948	Number of level 2 events

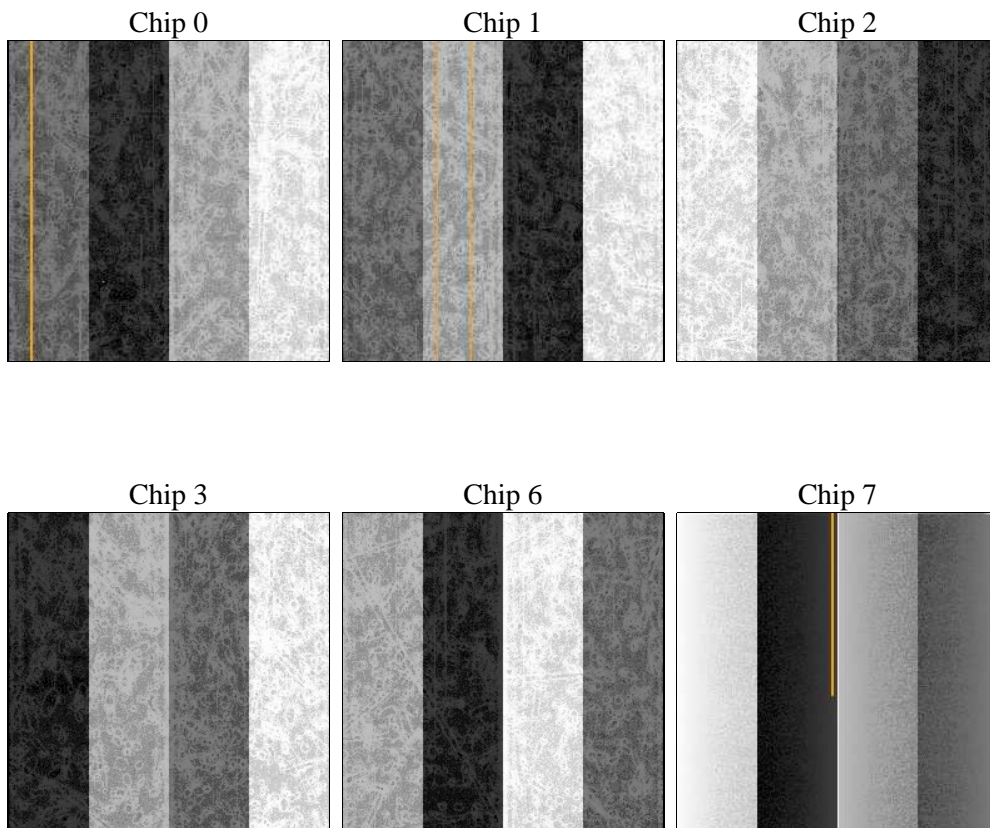
## 2 OBI

### 2.1 OBI

#### 2.1.1 Images



#### 2.1.2 Bias



### 2.1.3 Parameters

obi_num	0	Obi number	sched_exp_time	0.0	[s] Scheduled observation exposure time
ascdsver	8.4.3.1	Processing system revision	ontime	8277.5418697	Sum of GTIs [s]
caldsver	4.4.9	&#160	ontime0	8277.5210651159	Sum of GTIs [s]
date	2012-04-10T09:58:23	Date and time of file creation	ontime1	8277.4800251126	Sum of GTIs [s]
revision	2	Processing version of data	ontime2	8277.4389851093	Sum of GTIs [s]
			ontime3	8277.541849792	Sum of GTIs [s]
			ontime6	8277.397945106	Sum of GTIs [s]
			ontime7	8277.5418697	Sum of GTIs [s]
			l1events	1312398	Number of level 1 events

### 2.1.4 Events

	ccd 0	ccd 1	ccd 2	ccd 3	ccd 6	ccd 7		ccd 0	ccd 1	ccd 2	ccd 3	ccd 6	ccd 7
level 1 events	210644	211952	214859	216156	221904	236883	grade 0 events	78291	78015	80051	80828	80597	38740
rejected events	66570	67465	69991	70558	71340	60695		37%	36%	37%	37%	36%	16%
rejected %	31%	31%	32%	32%	32%	25%	grade 1 events	545	430	607	585	458	168
								0%	0%	0%	0%	0%	0%
							grade 2 events	25451	26079	24396	24904	26331	38253
								12%	12%	11%	11%	11%	16%
							grade 3 events	9457	9368	9976	9633	9701	17126
								4%	4%	4%	4%	4%	7%
							grade 4 events	9519	9232	9491	9842	9430	16967
								4%	4%	4%	4%	4%	7%
							grade 5 events	3764	3994	3497	4100	4222	10245
								1%	1%	1%	1%	1%	4%
							grade 6 events	21356	21793	20954	20391	24505	65102
								10%	10%	9%	9%	11%	27%
							grade 7 events	62261	63041	65887	65873	66660	50282
								29%	29%	30%	30%	30%	21%

## 2.2 Compared Parameters

Parameter	Planned	Actual
Instrument	ACIS	ACIS
Detector	ACIS-012367	ACIS-012367
Grating	NONE	NONE
Data mode	FAINT	FAINT
Observation mode	SECONDARY	SECONDARY
[deg] Pointing RA	0	334.5229272802115
[deg] Pointing Dec	0	-6.020608344990747
[deg] Pointing Roll	0.0	283.1260764360689
[mm] SIM focus pos	-0.782348	-0.7809083437167272
[mm] SIM defocus	0	0.7524282956875696
[mm] SIM translation stage pos	-233.592463	250.466033080201
[mm] SIM translation stage offset	0	-0.01005468664627074
[s] Observation start time (MET)	275555381.256468	275555380.23148
Observation start date	2006-09-25T07:09:41	2006-09-25T07:09:40
[s] Observation end time (MET)	275578636.457561	275578635.43258
Observation end date	2006-09-25T13:37:16	2006-09-25T13:37:15
Read mode	TIMED	TIMED

Parameter	Planned	Actual
Obspar format version number	7	7
Obspar file type	PREDICTED	ACTUAL
Obspar update status	NONE	UPDATED
On-chip summing requested	N	N
Subarray requested	NONE	NONE
Alternating exposures requested	N	N
[s] Primary exposure time	3.2	3.2

## **2.3 Star Slots**

## **2.4 FID Slots**

## A Summary

### A.1 Status

V&V Scientist	Beth Sundheim
V&V Date (YYYY-MM-DD)	2012.04.10
V&V Edition	1
V&V Disposition and Status	OK
V&V Charge Time	8.2775418697

### A.2 Comments