

V&V Reference Report

L2 ASCDS Version : 8.4.3.1

Observation 58761 - L2 Version 2
Chandra X-Ray Center

L2 Processing Date : Apr 10 2012

Contents

1	Front	2
2	OBI	3
2.1	OBI	3
2.1.1	Images	3
2.1.2	Bias	3
2.1.3	Parameters	4
2.1.4	Events	4
2.2	Compared Parameters	5
2.3	Star Slots	6
2.4	FID Slots	6
A	Summary	7
A.1	Status	7
A.2	Comments	7

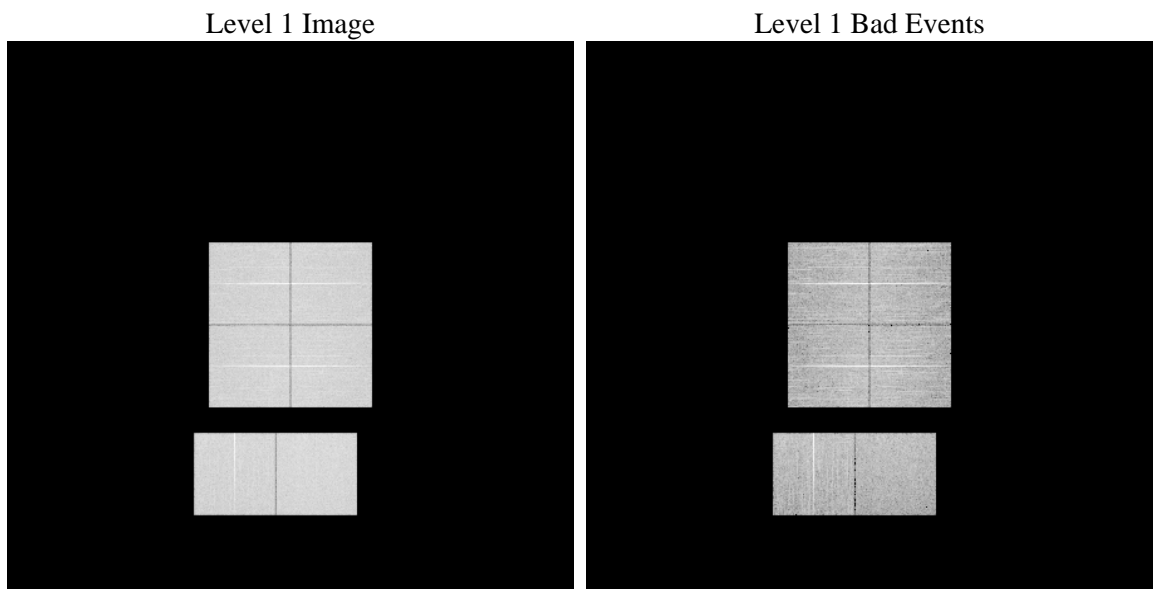
1 Front

seq_num	 	Sequence number
obs_id	58761	Observation id
title	ACIS-012367 diagnostics	Proposal title
observer	CHANDRA engineering request/realtime commanding	Principal investig
object	 	Source name
dtcycle	0	
cycle	P	events from which exps? Prim/Second/Both
ra_targ	0.0	Observer's specified target RA [deg]
dec_targ	0.0	Observer's specified target Dec [deg]
ra_nom	15.422788090705	Nominal RA [deg]
dec_nom	-8.5776967200769	Nominal Dec [deg]
roll_nom	29.377325677051	Nominal Roll [deg]
revision	2	Processing version of data
ontime	7797.6912487745	Sum of GTIs [s]
livetime	7698.9521869766	Livetime [s]
ontime0	7798.3999710083	Sum of GTIs [s]
ontime1	7798.3999710083	Sum of GTIs [s]
ontime2	7798.3999710083	Sum of GTIs [s]
ontime3	7797.6501889229	Sum of GTIs [s]
ontime6	7798.3999710083	Sum of GTIs [s]
ontime7	7797.6912487745	Sum of GTIs [s]
l2events	808861	Number of level 2 events

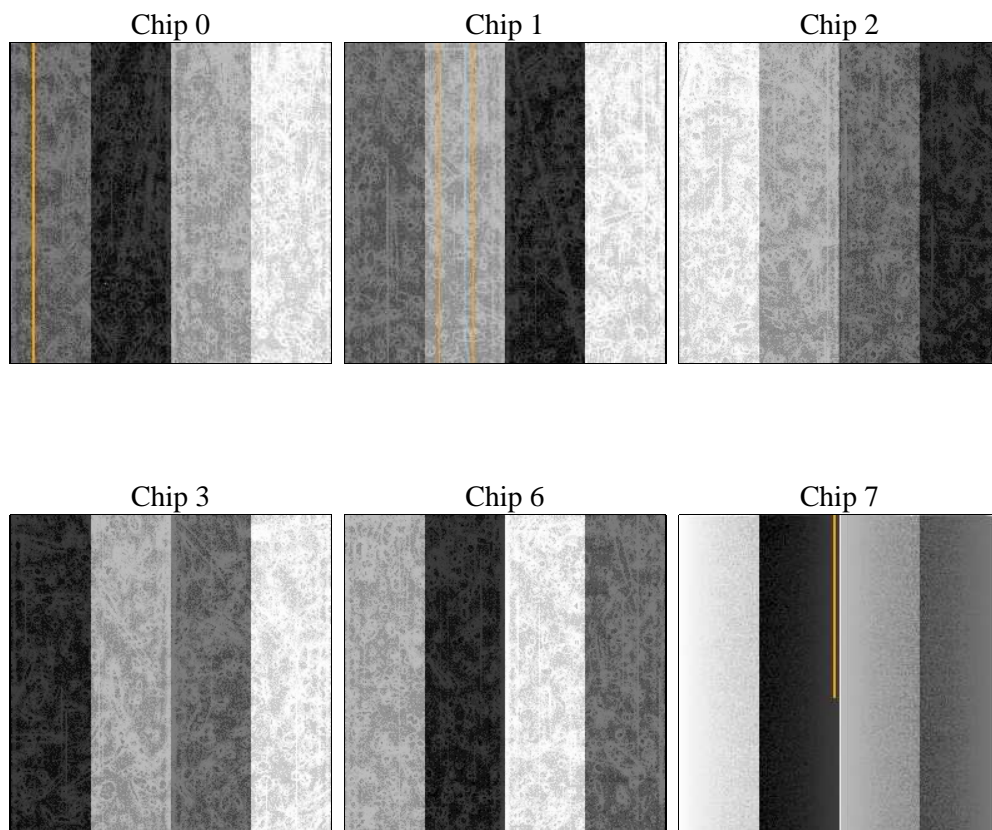
2 OBI

2.1 OBI

2.1.1 Images



2.1.2 Bias



2.1.3 Parameters

obi_num	0	Obi number	sched_exp_time	0.0	[s] Scheduled observation exposure time
ascdsver	8.4.3.1	Processing system revision	ontime	7797.6912487745	Sum of GTIs [s]
caldsver	4.4.9	 	ontime0	7798.3999710083	Sum of GTIs [s]
date	2012-04-11T00:53:24	Date and time of file creation	ontime1	7798.3999710083	Sum of GTIs [s]
revision	2	Processing version of data	ontime2	7798.3999710083	Sum of GTIs [s]
			ontime3	7797.6501889229	Sum of GTIs [s]
			ontime6	7798.3999710083	Sum of GTIs [s]
			ontime7	7797.6912487745	Sum of GTIs [s]
			l1events	1236514	Number of level 1 events

2.1.4 Events

	ccd 0	ccd 1	ccd 2	ccd 3	ccd 6	ccd 7		ccd 0	ccd 1	ccd 2	ccd 3	ccd 6	ccd 7
level 1 events	198960	198728	203116	206802	207180	221728	grade 0 events	73622	73501	75290	76543	75742	36494
rejected events	63824	62747	66631	68987	65881	56017		37%	36%	37%	37%	36%	16%
rejected %	32%	31%	32%	33%	31%	25%	grade 1 events	547	425	519	528	495	158
								0%	0%	0%	0%	0%	0%
							grade 2 events	23704	24669	23237	23727	24741	35736
								11%	12%	11%	11%	11%	16%
							grade 3 events	8966	8709	9288	9050	8776	16106
								4%	4%	4%	4%	4%	7%
							grade 4 events	8920	8801	9112	8952	8936	16106
								4%	4%	4%	4%	4%	7%
							grade 5 events	3590	3766	3335	3970	3962	9457
								1%	1%	1%	1%	1%	4%
							grade 6 events	19980	20353	19622	19543	23153	61269
								10%	10%	9%	9%	11%	27%
							grade 7 events	59631	58504	62713	64489	61375	46402
								29%	29%	30%	31%	29%	20%

2.2 Compared Parameters

Parameter	Planned	Actual	Parameter	Planned	Actual
Instrument	ACIS	ACIS	Obspar format version number	7	7
Detector	ACIS-012367	ACIS-012367	Obspar file type	PREDICTED	ACTUAL
Grating	NONE	NONE	Obspar update status	NONE	UPDATED
Data mode	FAINT	FAINT	On-chip summing requested	N	N
Observation mode	SECONDARY	SECONDARY	Subarray requested	NONE	NONE
[deg] Pointing RA	0	15.42278809070513	Alternating exposures requested	N	N
[deg] Pointing Dec	0	-8.577696720076908	[s] Primary exposure time	3.2	3.2
[deg] Pointing Roll	0.0	29.37732567705145			
[mm] SIM focus pos	-0.782348	-0.7809083437167272			
[mm] SIM defocus	0	0.7524282956875696			
[mm] SIM translation stage pos	-233.592463	250.466033080201			
[mm] SIM translation stage offset	0	-0.01005468664627074			
[s] Observation start time (MET)	276201313.73689	276201312.71188			
Observation start date	2006-10-02T18:35:14	2006-10-02T18:35:12			
[s] Observation end time (MET)	276220706.737803	276220705.7128			
Observation end date	2006-10-02T23:58:27	2006-10-02T23:58:25			
Read mode	TIMED	TIMED			

2.3 Star Slots

2.4 FID Slots

A Summary

A.1 Status

V&V Scientist	Jen Lauer
V&V Date (YYYY-MM-DD)	2012.04.11
V&V Edition	1
V&V Disposition and Status	OK
V&V Charge Time	7.7976912487745

A.2 Comments