

V&V Reference Report

L2 ASCDS Version : 8.4.3

Observation 5871 - L2 Version 2
Chandra X-Ray Center

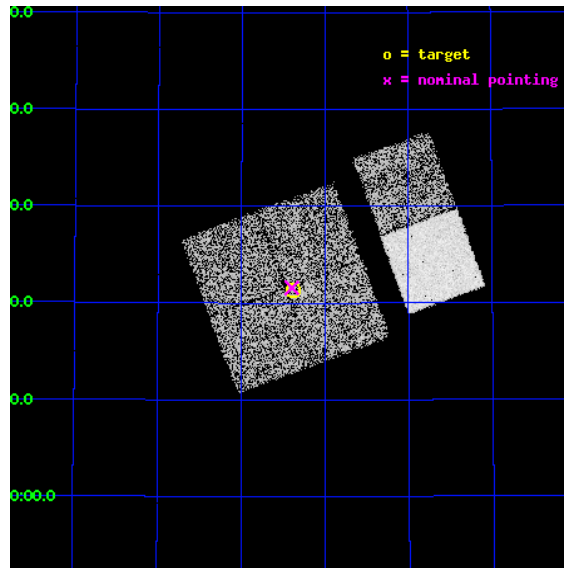
L2 Processing Date : Mar 24 2012

Contents

1	Front	2
2	OBI	3
2.1	OBI	3
2.1.1	Images	3
2.1.2	Bias	3
2.1.3	Parameters	4
2.1.4	Events	4
2.2	Compared Parameters	5
2.3	Aspect	6
2.4	Star Slots	9
2.4.1	Slot 3	9
2.4.2	Slot 4	10
2.4.3	Slot 5	11
2.4.4	Slot 6	12
2.4.5	Slot 7	13
2.5	FID Slots	14
2.5.1	Slot 0	14
2.5.2	Slot 1	15
2.5.3	Slot 2	16
A	Summary	17
A.1	Status	17
A.2	Comments	17

1 Front

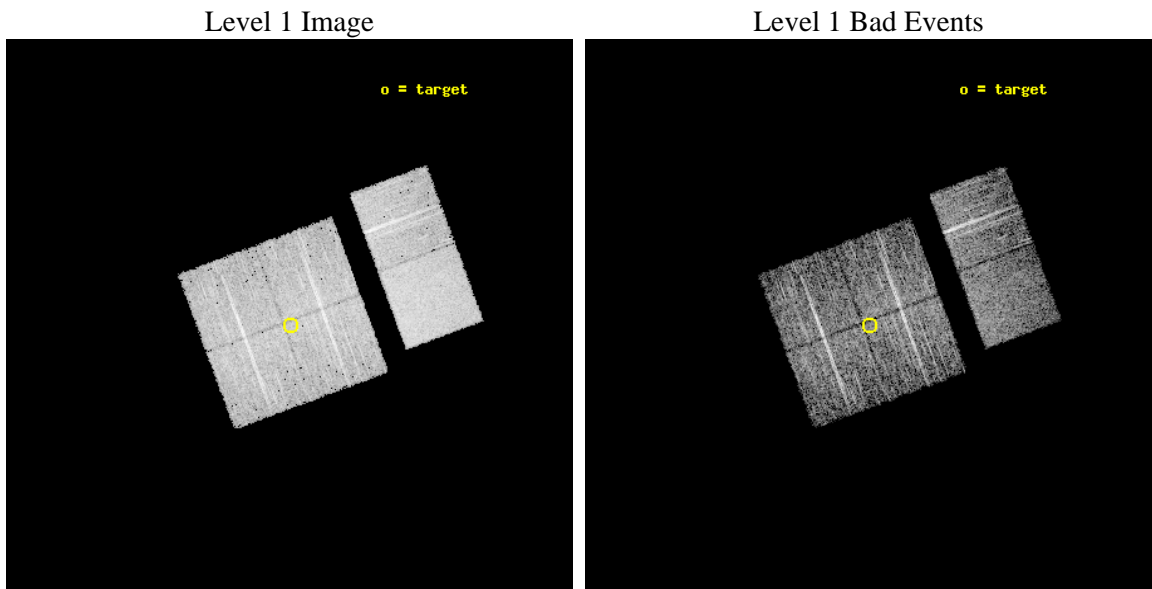
seq_num	900371	Sequence number
obs_id	5871	Observation id
title	The Spectral Energy Distributions of AGN: A Shallow Survey of the ELAIS-N1 Field	Proposal title
observer	Prof Kirpal Nandra	Principal investigator
object	N1_17	Source name
dtcycle	0	
cycle	P	events from which exps? Prim/Second/Both
ra_targ	242.59375	Observer's specified target RA [deg]
dec_targ	54.356194	Observer's specified target Dec [deg]
ra_nom	242.59909471779	Nominal RA [deg]
dec_nom	54.359679858451	Nominal Dec [deg]
roll_nom	69.709845459286	Nominal Roll [deg]
revision	2	Processing version of data
ontime	4758.3999822736	Sum of GTIs [s]
livetime	4698.1462565335	Livetime [s]
ontime0	4758.3999822736	Sum of GTIs [s]
ontime1	4758.3999822736	Sum of GTIs [s]
ontime2	4758.3999822736	Sum of GTIs [s]
ontime3	4758.3999822736	Sum of GTIs [s]
ontime6	4755.1590119898	Sum of GTIs [s]
ontime7	4758.3999822736	Sum of GTIs [s]
l2events	42845	Number of level 2 events



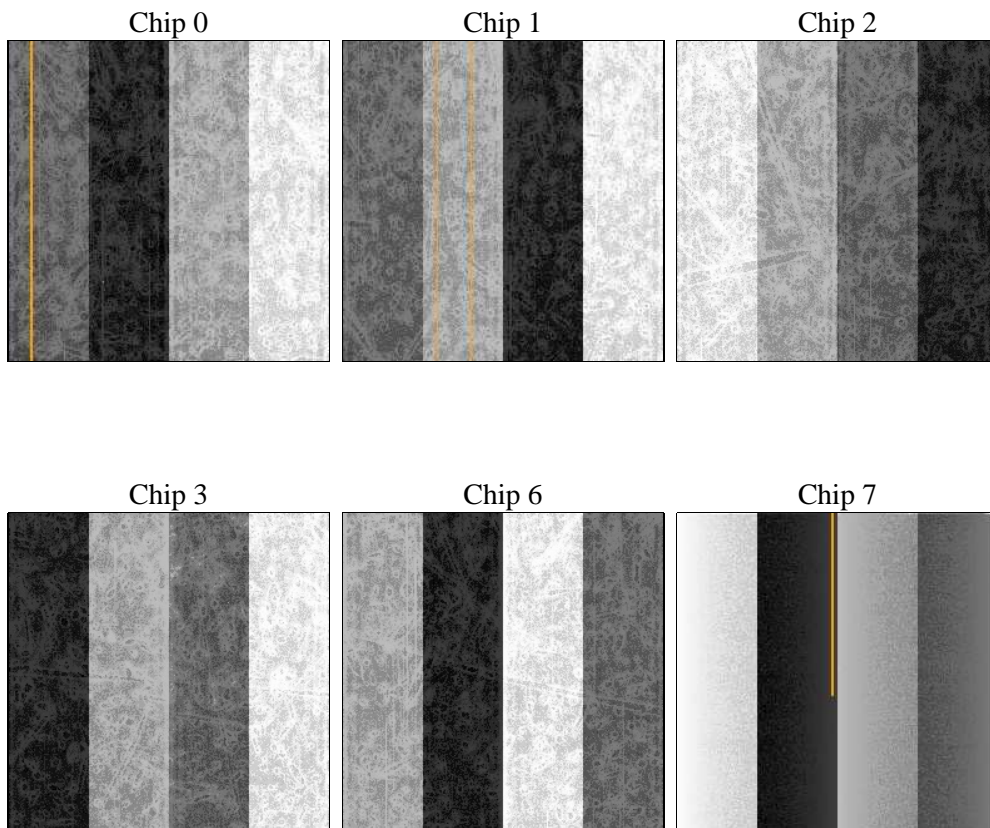
2 OBI

2.1 OBI

2.1.1 Images



2.1.2 Bias



2.1.3 Parameters

obi_num	0	Obi number	sched_exp_time	5000.000000	[s] Scheduled observation exposure time
ascdsver	8.4.3	Processing system revision	ontime	4758.3999822736	Sum of GTIs [s]
caldsver	4.4.8	 	ontime0	4758.3999822736	Sum of GTIs [s]
date	2012-03-25T00:12:07	Date and time of file creation	ontime1	4758.3999822736	Sum of GTIs [s]
revision	2	Processing version of data	ontime2	4758.3999822736	Sum of GTIs [s]
			ontime3	4758.3999822736	Sum of GTIs [s]
			ontime6	4755.1590119898	Sum of GTIs [s]
			ontime7	4758.3999822736	Sum of GTIs [s]
			l1events	249745	Number of level 1 events

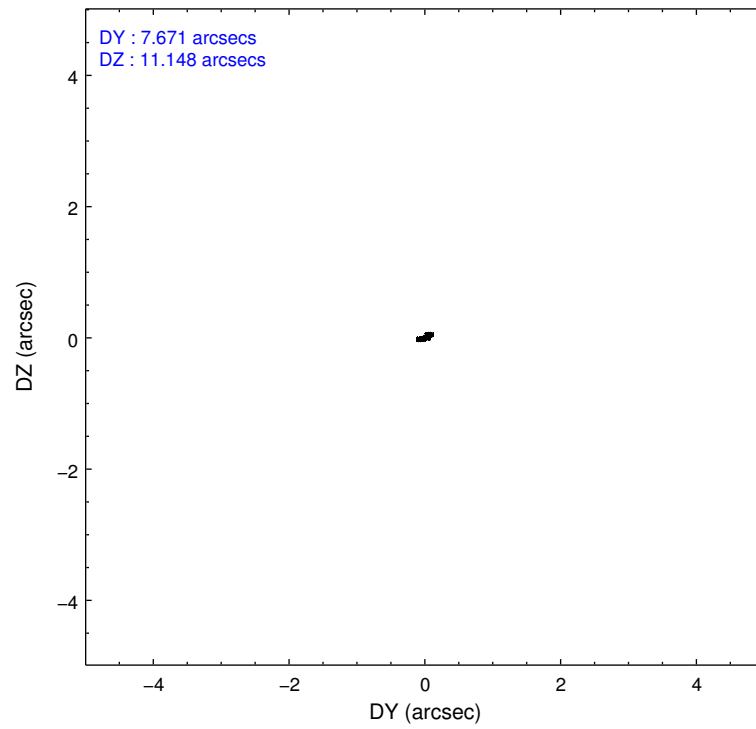
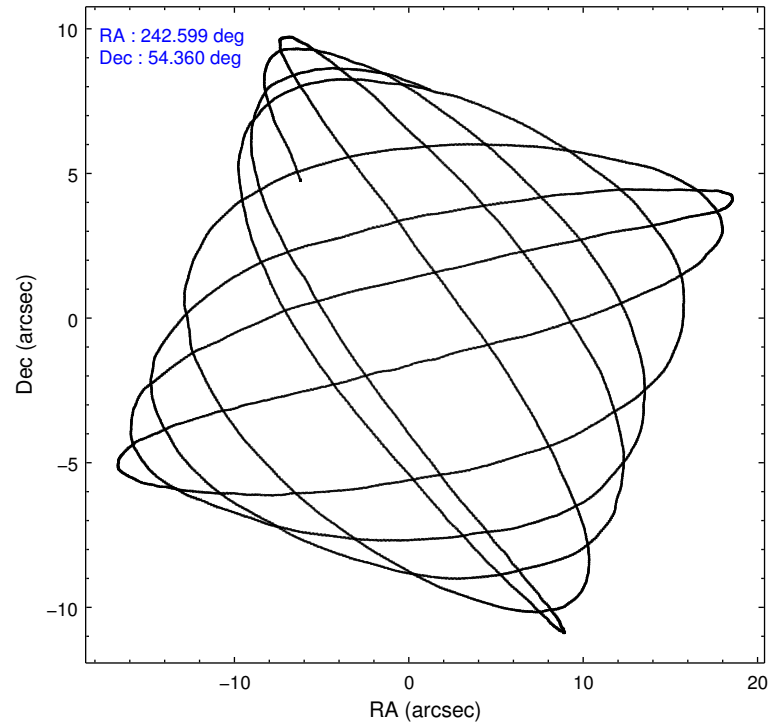
2.1.4 Events

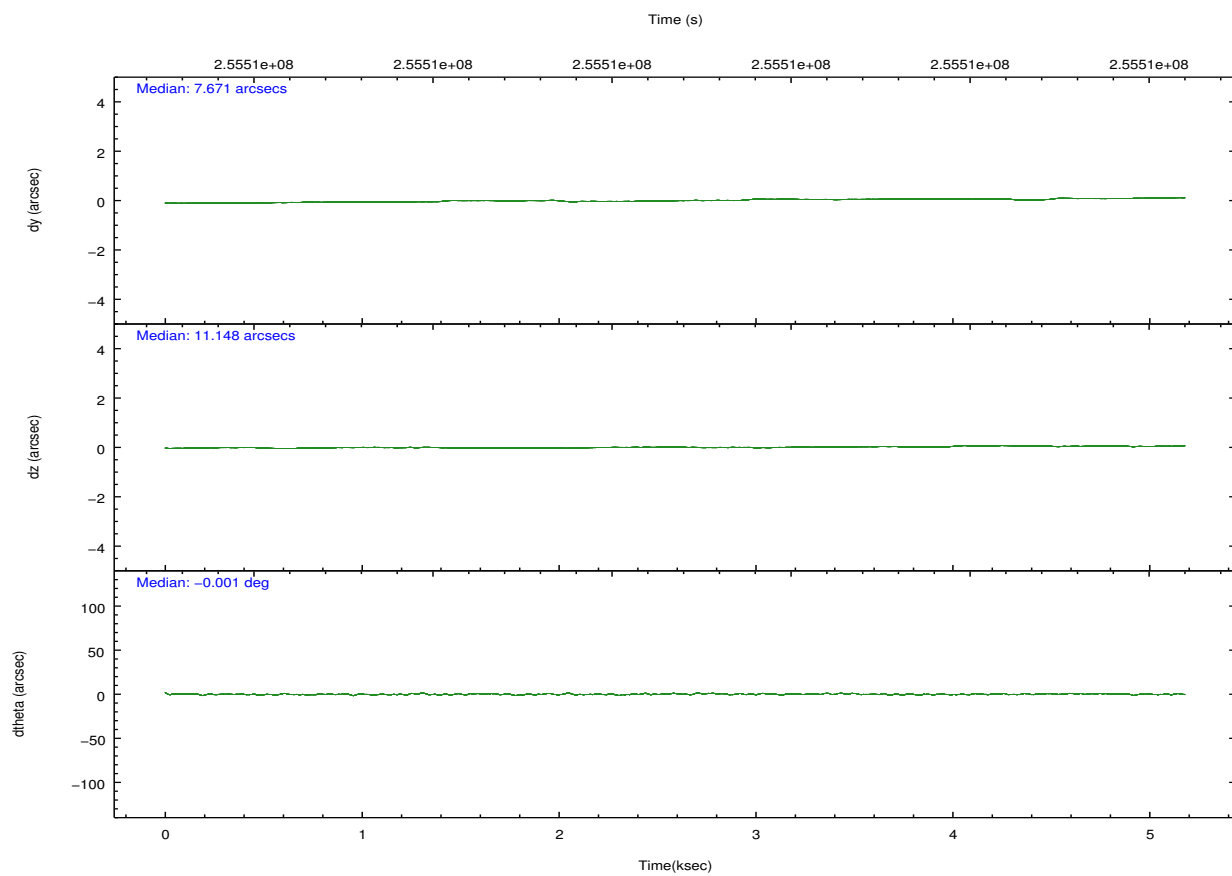
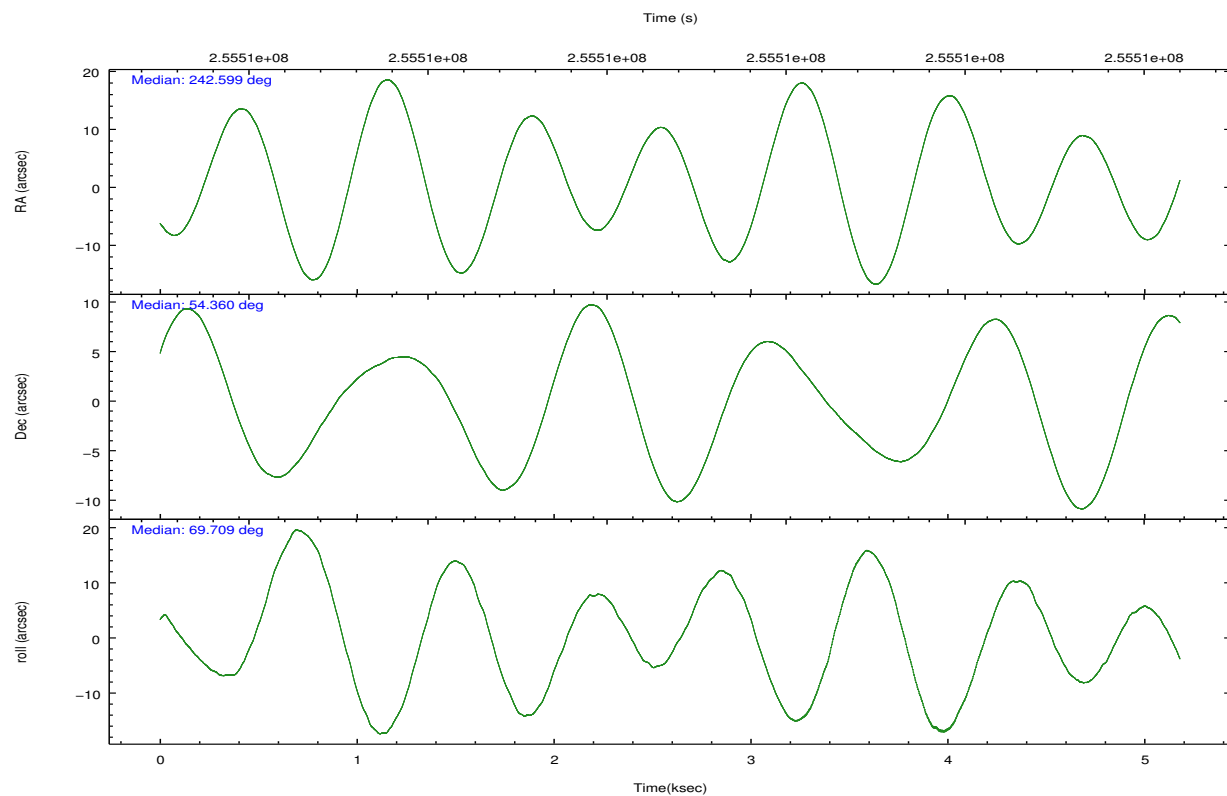
	ccd 0	ccd 1	ccd 2	ccd 3	ccd 6	ccd 7		ccd 0	ccd 1	ccd 2	ccd 3	ccd 6	ccd 7
level 1 events	36266	37818	39478	40007	41176	55000	grade 0 events	2038	1947	2120	2064	1760	2060
rejected events	31533	32822	34758	35252	36493	32286		5%	5%	5%	5%	4%	3%
rejected %	86%	86%	88%	88%	88%	58%	grade 1 events	27	25	28	28	30	56
								0%	0%	0%	0%	0%	0%
							grade 2 events	999	1107	978	915	1056	4669
								2%	2%	2%	2%	2%	8%
							grade 3 events	480	514	446	463	459	2060
								1%	1%	1%	1%	1%	3%
							grade 4 events	423	467	433	458	437	1956
								1%	1%	1%	1%	1%	3%
							grade 5 events	1561	1732	1520	1811	1893	5130
								4%	4%	3%	4%	4%	9%
							grade 6 events	800	970	749	861	983	12000
								2%	2%	1%	2%	2%	21%
							grade 7 events	29938	31056	33204	33407	34558	27069
								82%	82%	84%	83%	83%	49%

2.2 Compared Parameters

Parameter	Planned	Actual	Parameter	Planned	Actual
Instrument	ACIS	ACIS	Obspar format version number	7	7
Detector	ACIS-012367	ACIS-012367	Obspar file type	PREDICTED	ACTUAL
Grating	NONE	NONE	Obspar update status	NONE	UPDATED
Data mode	VFAINT	VFAINT	Number of optional ACIS chips dropped	0	0
Observation mode	POINTING	POINTING	On-chip summing requested	N	N
[deg] Pointing RA	242.607309	242.5990947177859	Subarray requested	NONE	NONE
[deg] Pointing Dec	54.332611	54.35967985845146	Alternating exposures requested	N	N
[deg] Pointing Roll	69.494483	69.70984545928596	[s] Primary exposure time	0.000000	3.2
[mm] SIM focus pos	-0.782348	-0.7809083437167272			
[mm] SIM defocus	0	0.001439871863259334			
[mm] SIM translation stage pos	-233.592463	-233.5874344608287			
[mm] SIM translation stage offset	0	-0.005018542100998502			
[s] Observation start time (MET)	255505939.184000	255505562.88209			
Observation start date	2006-02-05T05:51:14	2006-02-05T05:46:02			
[s] Observation end time (MET)	255510939.184000	255511619.60737			
Observation end date	2006-02-05T07:14:34	2006-02-05T07:26:59			
Read mode	TIMED	TIMED			

2.3 Aspect



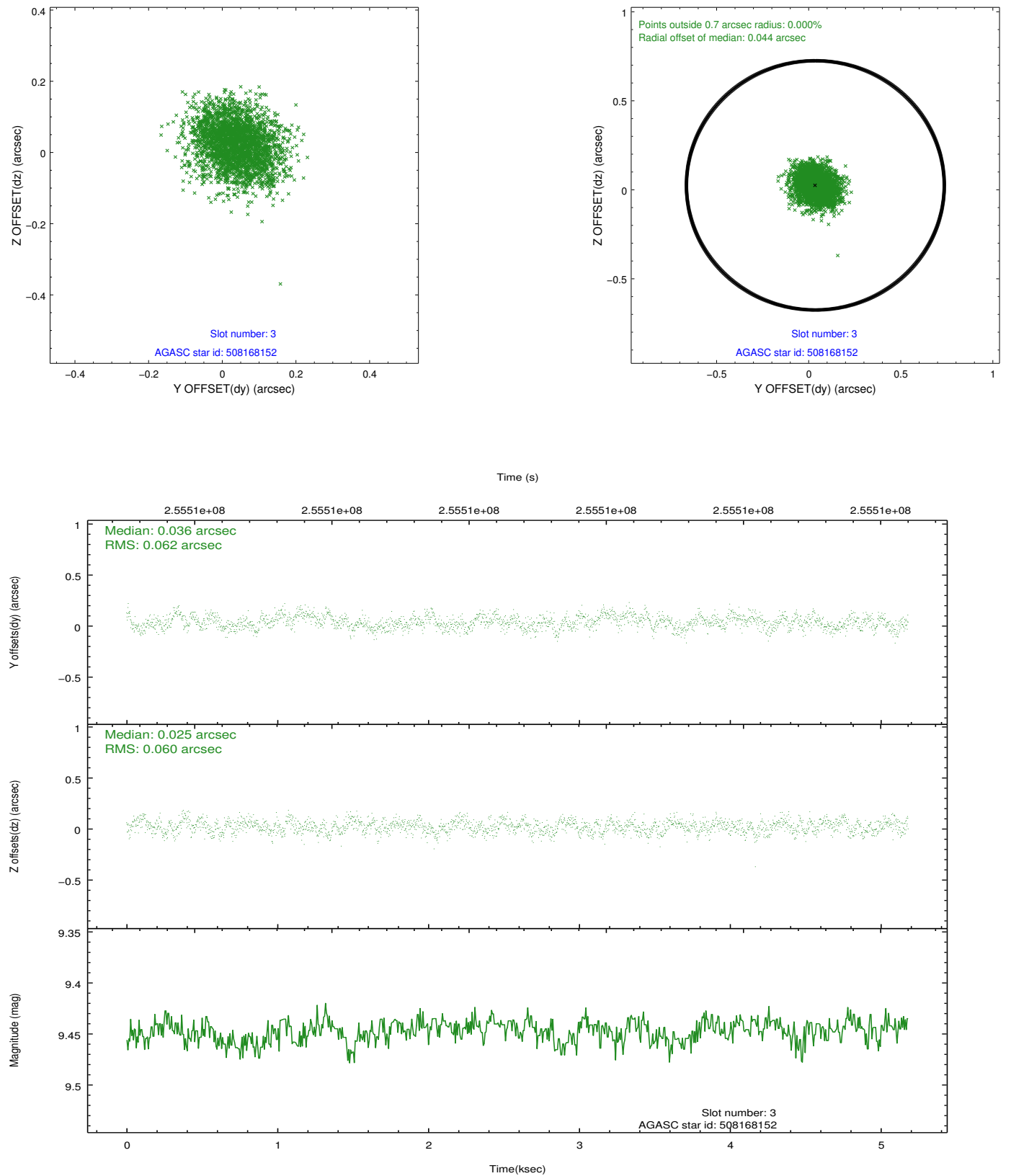


Slot Statistics

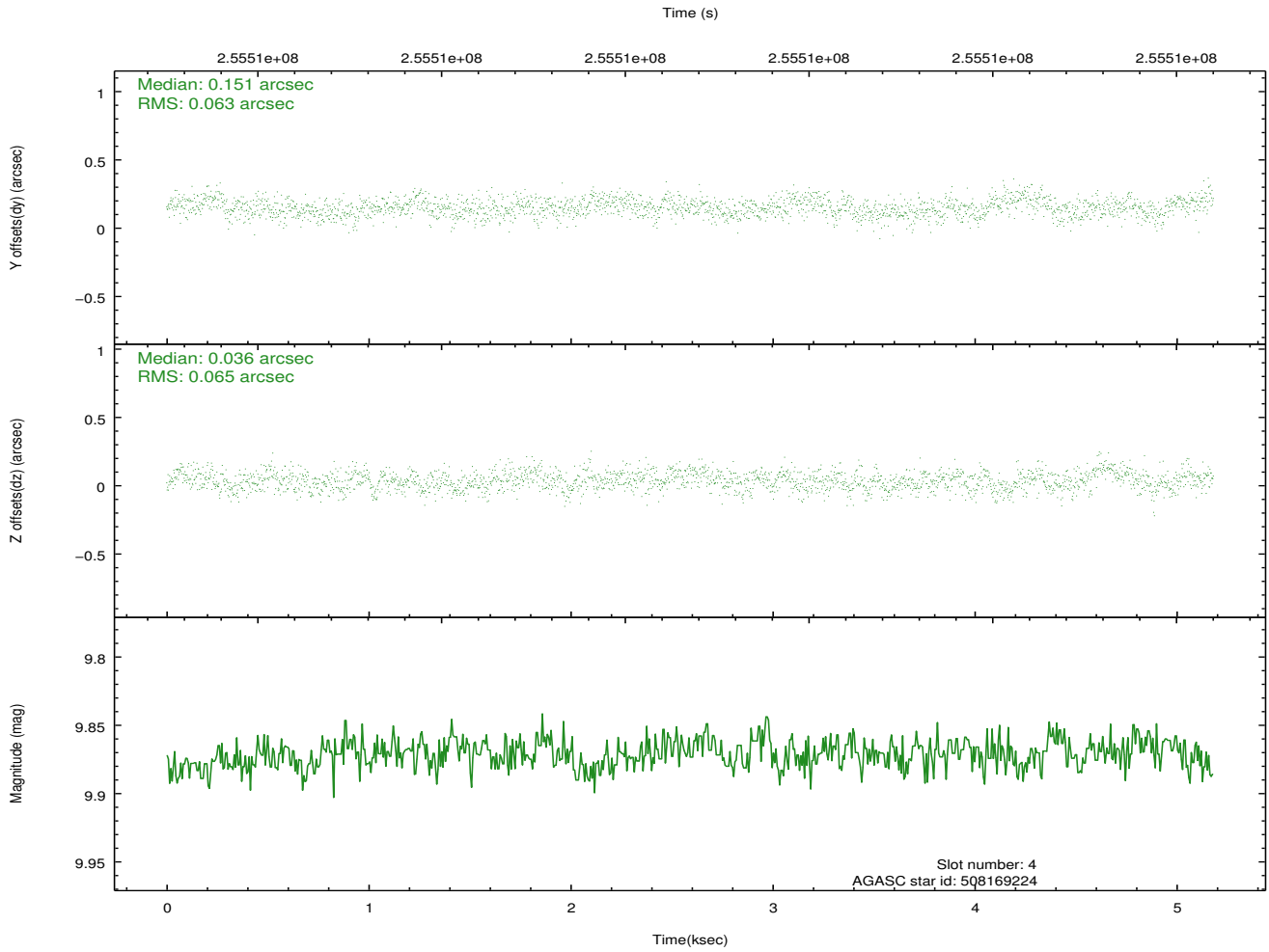
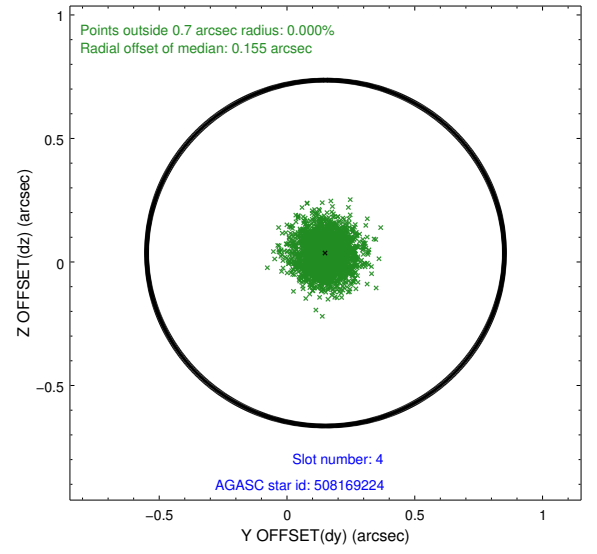
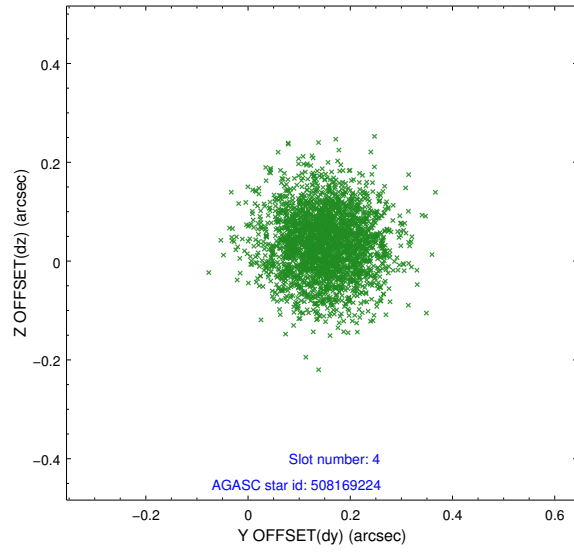
slot	status	id	mag	n_pts	med_dy	med_dz	dr1	dr2	ra	dec	mean_y	mean_z
0	FID	ACIS-I-1	7.24	1264	-0.010	-0.059	0.008	0.014	0.000000	0.000000	931.97	-834.73
1	FID	ACIS-I-4	7.17	1264	0.143	0.070	0.008	0.013	0.000000	0.000000	2152.84	1064.61
2	FID	ACIS-I-5	7.22	1263	-0.232	0.061	0.007	0.013	0.000000	0.000000	-1814.72	1063.84
3	GUIDE	508168152	9.45	2525	0.036	0.025	0.093	0.148	241.888534	54.357327	-438.13	1445.86
4	GUIDE	508169224	9.87	2527	0.151	0.036	0.096	0.155	242.580277	53.826359	-1727.34	-584.30
5	GUIDE	508170024	9.40	2527	0.062	-0.019	0.095	0.153	241.730655	54.371050	-504.52	1773.81
6	GUIDE	508170896	9.00	2526	-0.084	0.004	0.074	0.119	242.052968	54.527984	256.92	1333.11
7	GUIDE	508172800	7.89	2527	-0.170	-0.045	0.058	0.092	242.573753	54.657892	1072.11	475.89

2.4 Star Slots

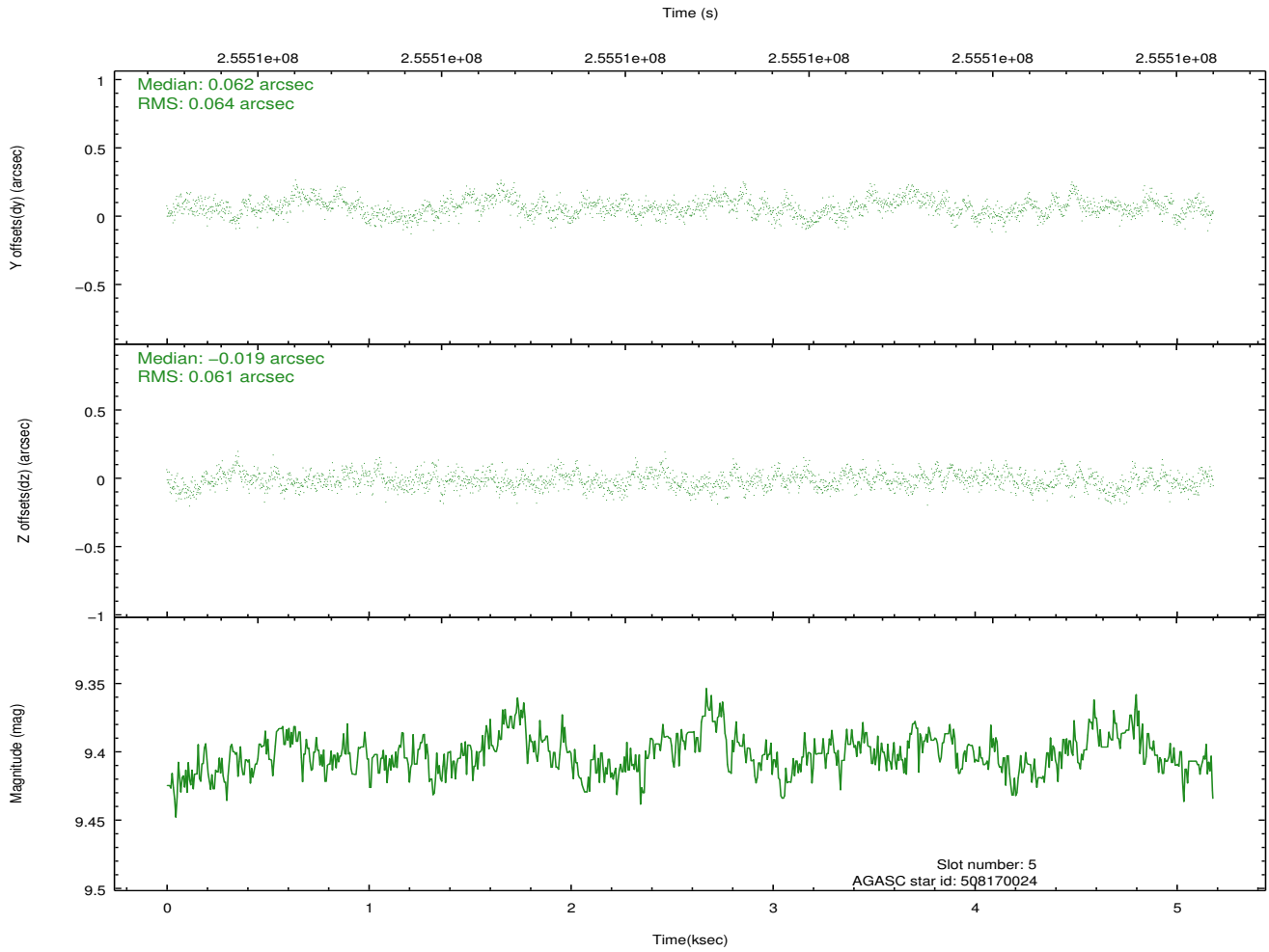
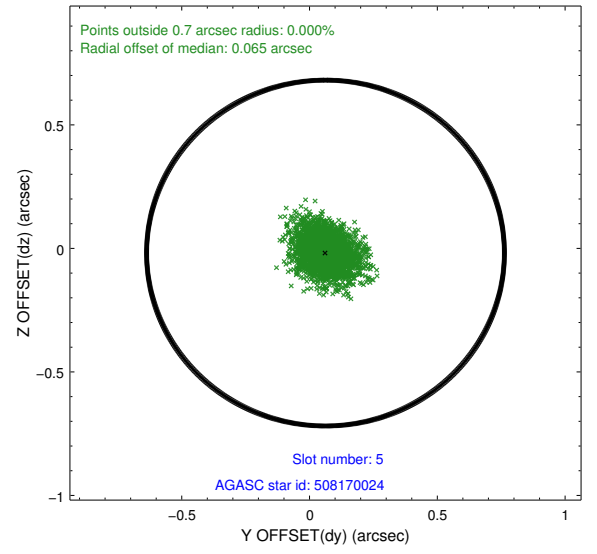
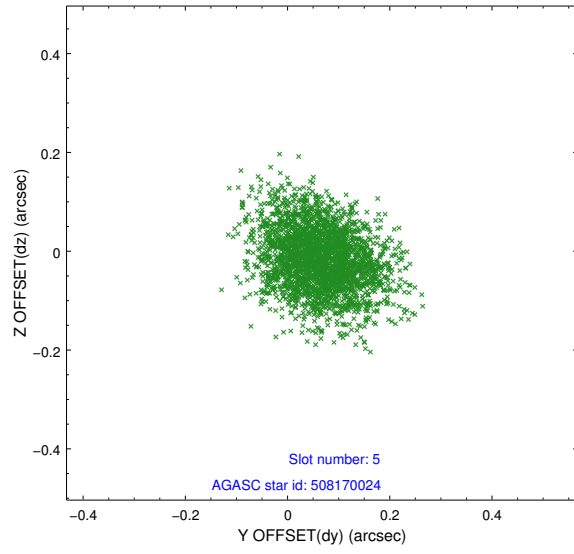
2.4.1 Slot 3



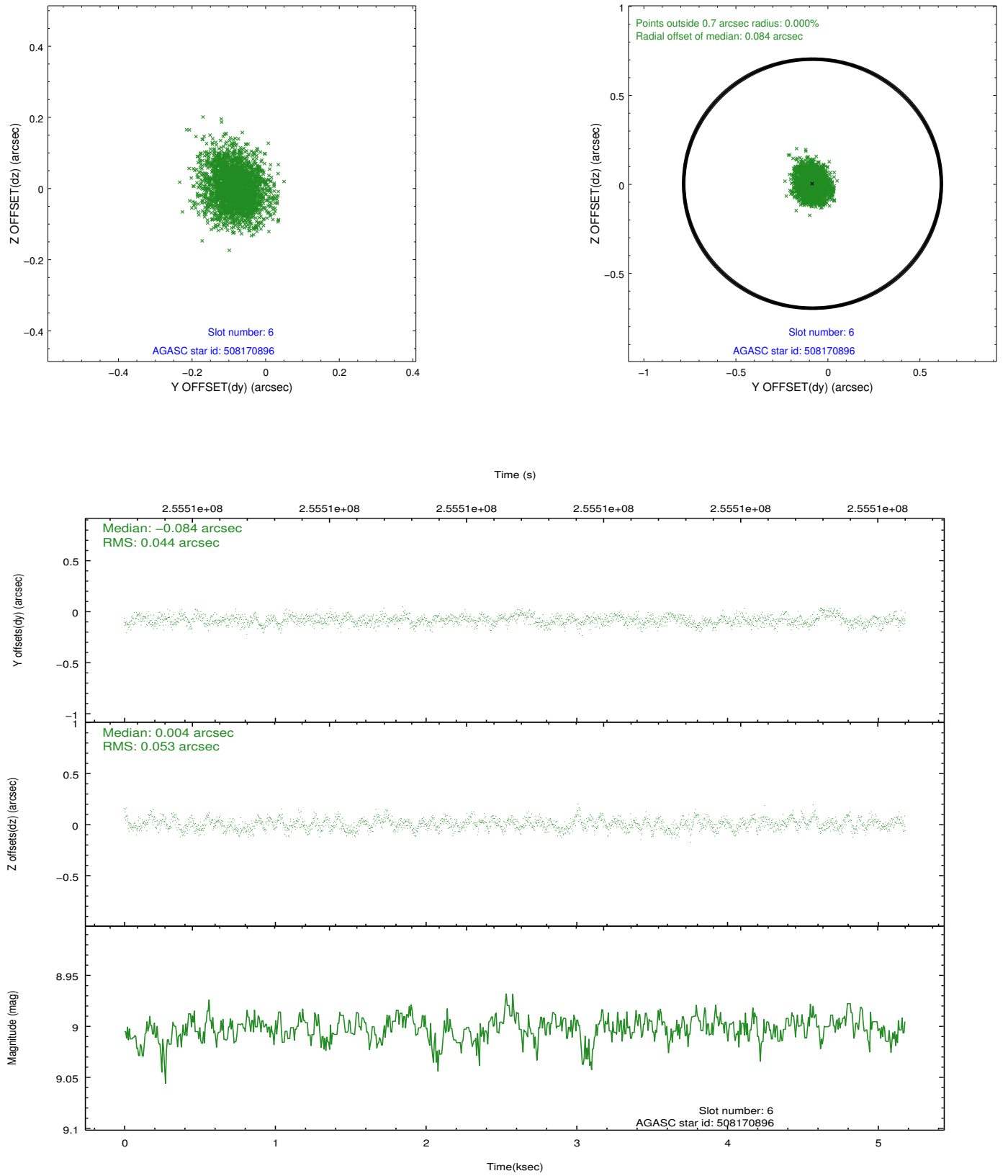
2.4.2 Slot 4



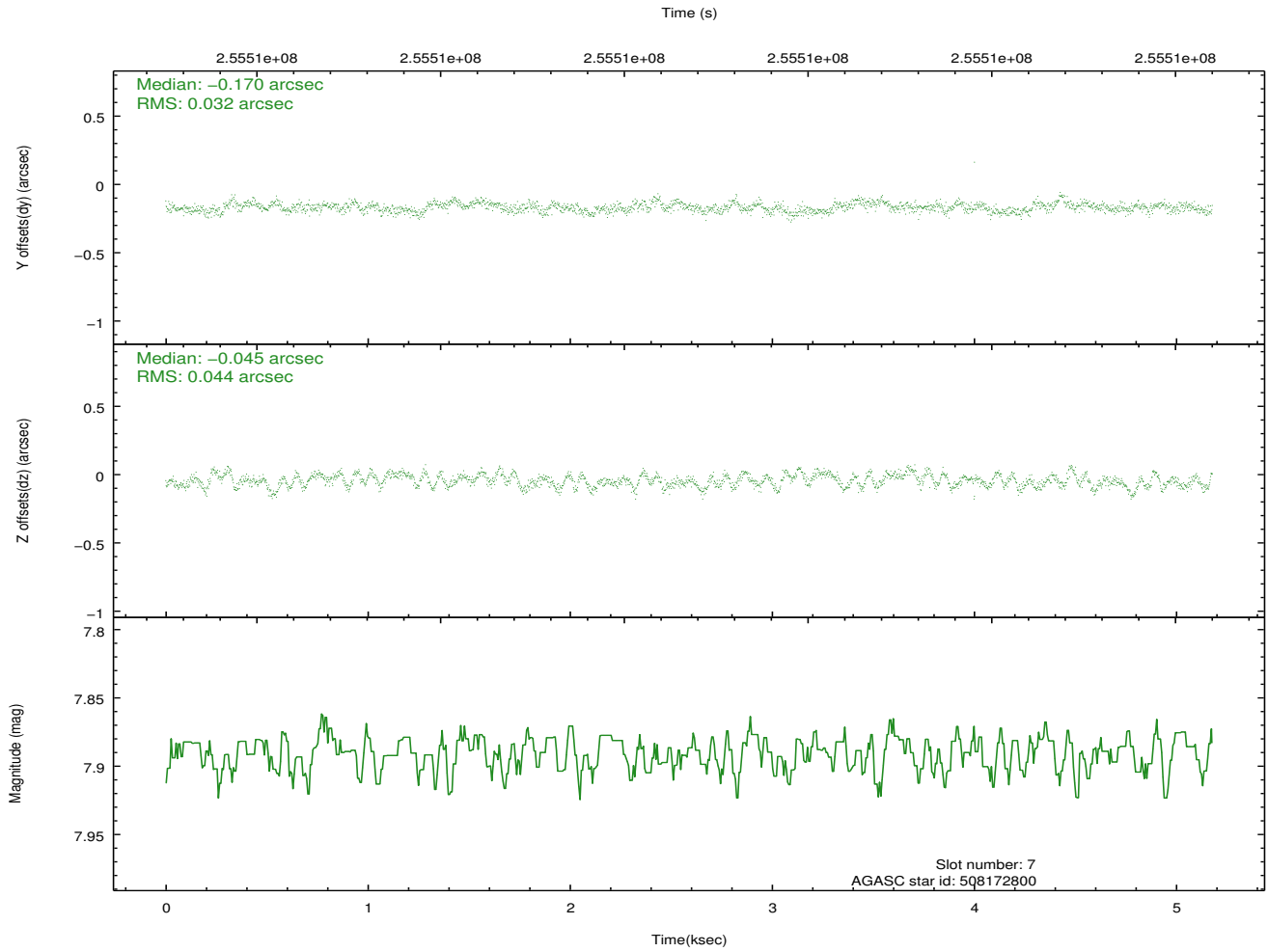
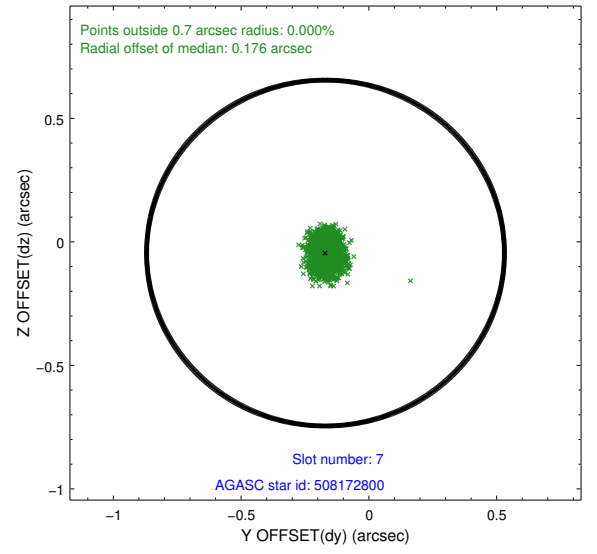
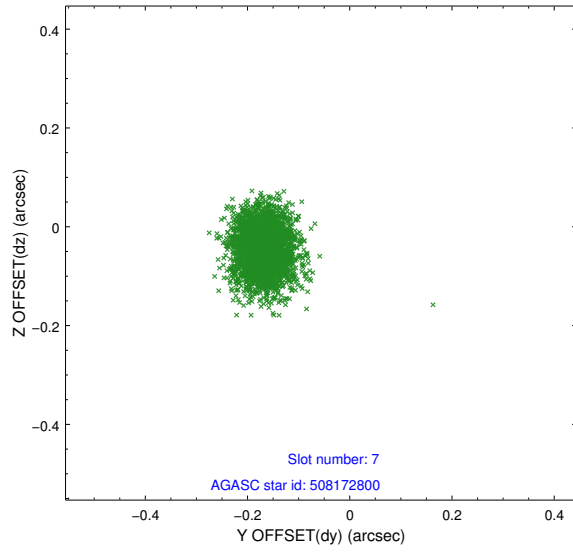
2.4.3 Slot 5



2.4.4 Slot 6

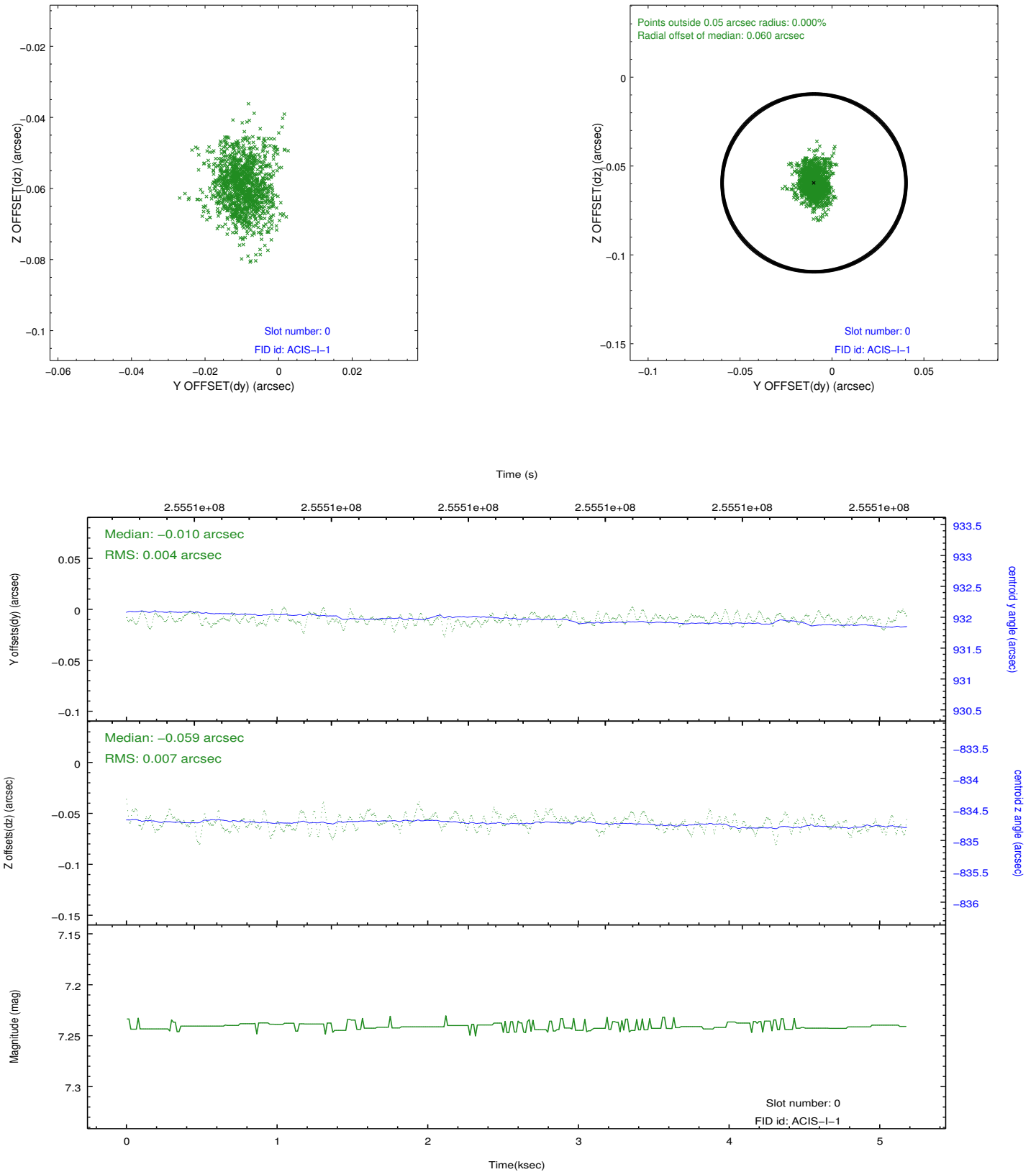


2.4.5 Slot 7

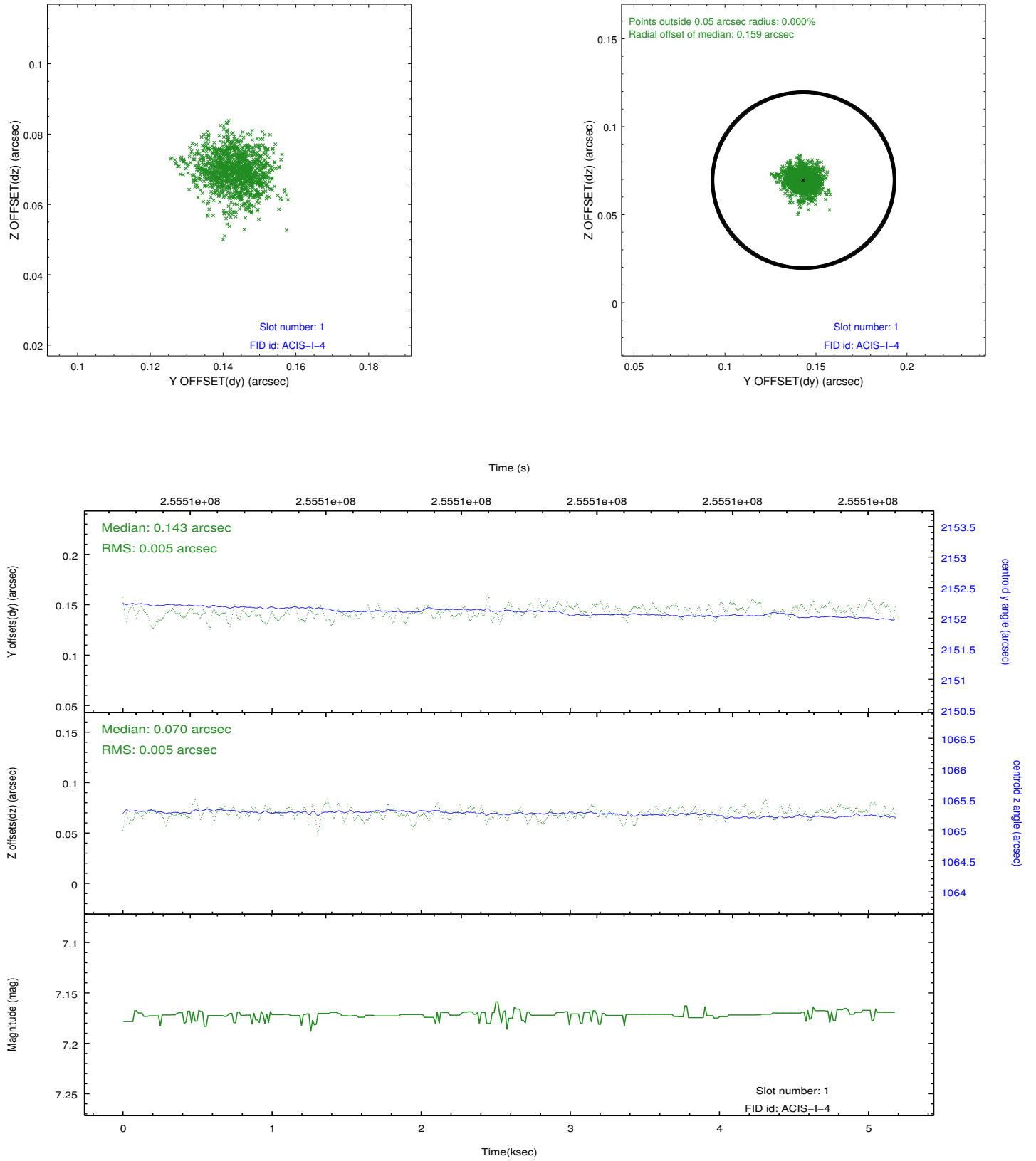


2.5 FID Slots

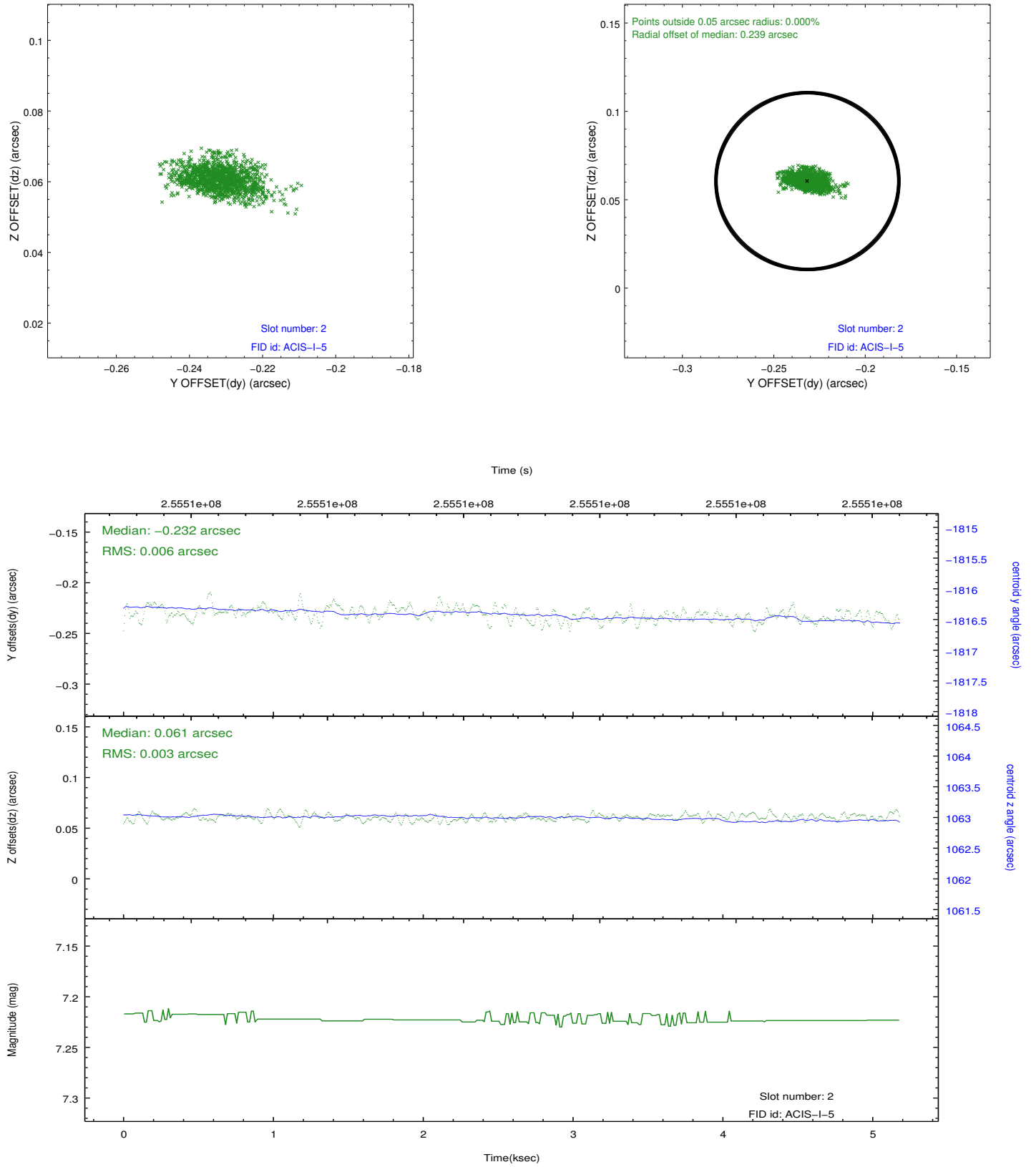
2.5.1 Slot 0



2.5.2 Slot 1



2.5.3 Slot 2



A Summary

A.1 Status

V&V Scientist	Jen Lauer
V&V Date (YYYY-MM-DD)	2012.03.27
V&V Edition	1
V&V Disposition and Status	OK
V&V Charge Time	4.75839998

A.2 Comments