

V&V Reference Report

L2 ASCDS Version : 7.6.7.1

Observation 5821 - L2 Version 002
Chandra X-Ray Center

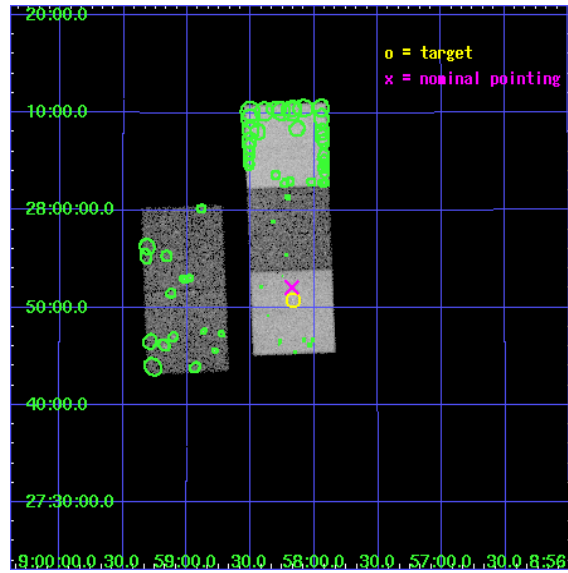
L2 Processing Date : Apr 7 2006

Contents

1	Front	2
2	OBI	3
2.1	OBI	3
2.1.1	Images	3
2.1.2	Bias	3
2.1.3	Parameters	4
2.1.4	Events	4
2.2	Compared Parameters	5
2.3	Aspect	6
2.4	Star Slots	9
2.4.1	Slot 3	9
2.4.2	Slot 4	10
2.4.3	Slot 5	11
2.4.4	Slot 6	12
2.4.5	Slot 7	13
2.5	FID Slots	14
2.5.1	Slot 0	14
2.5.2	Slot 1	15
2.5.3	Slot 2	16
3	Point Sources	17
A	Summary	18
A.1	Status	18
A.2	Comments	18

1 Front

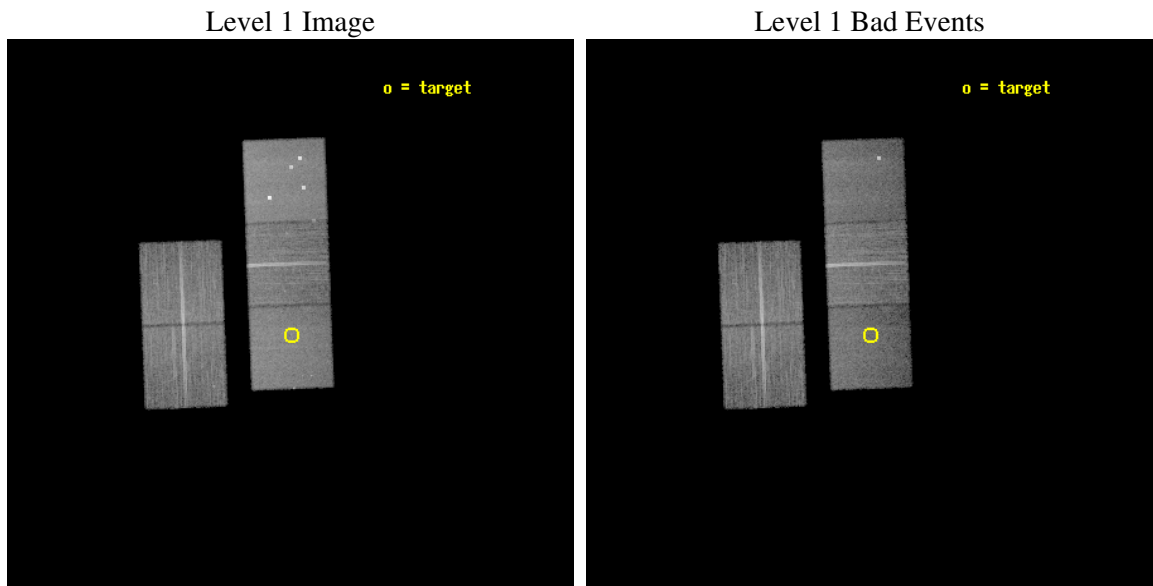
seq_num	800534
obs_id	5821
title	The Creation of the Intracluster Medium in High-z Galaxy Clusters
observer	Dr. Spencer Stanford
object	3C 210
dtcycle	0
cycle	P
ra_targ	134.54125
dec_targ	27.847778
ra_nom	134.54408403194
dec_nom	27.868363712617
roll_nom	87.842048456817
revision	2
ontime	20838.199959934
livetime	20565.933536598
ontime2	20838.199959934
ontime3	20831.917979419
ontime5	20838.199959934
ontime6	20835.058949798
ontime7	20838.199959934
l2events	173604



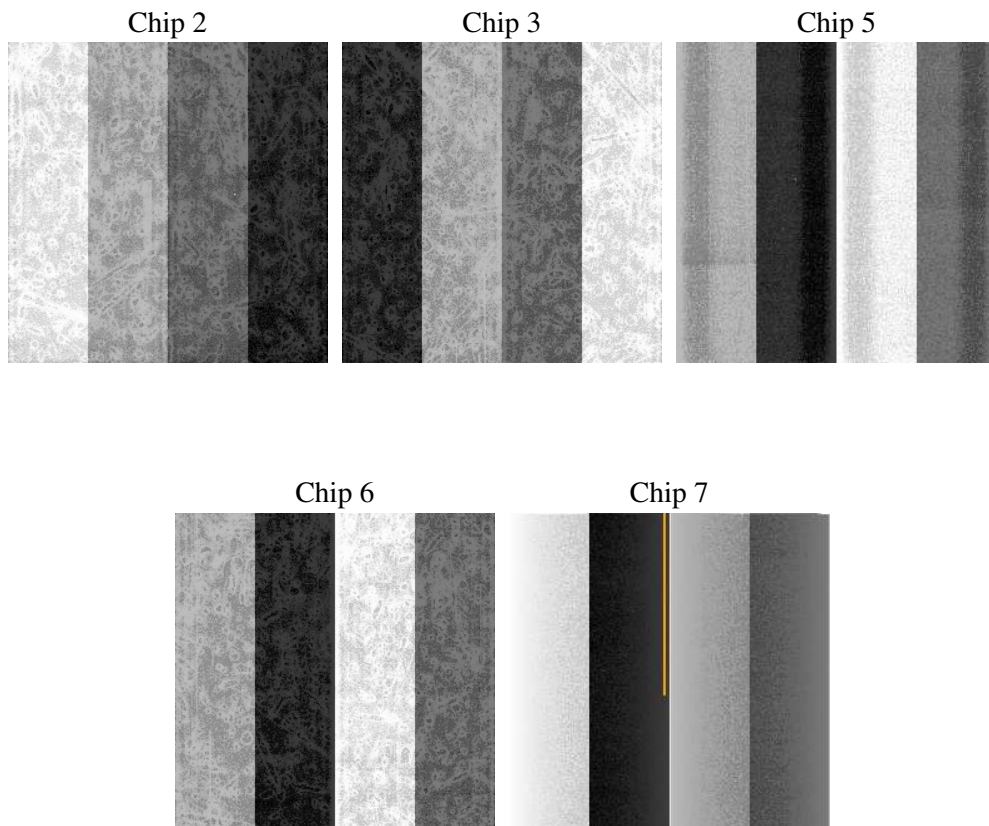
2 OBI

2.1 OBI

2.1.1 Images



2.1.2 Bias



2.1.3 Parameters

obi_num	0
ascdsver	7.6.7.1
caldbver	3.2.1
date	2006-04-07T14:25:54
revision	2

sched_exp_time	20800.000000
ontime	20843.768299222
ontime2	20843.768299222
ontime3	20837.486318707
ontime5	20843.768299222
ontime6	20840.627289087
ontime7	20843.768299222
l1events	750543

2.1.4 Events

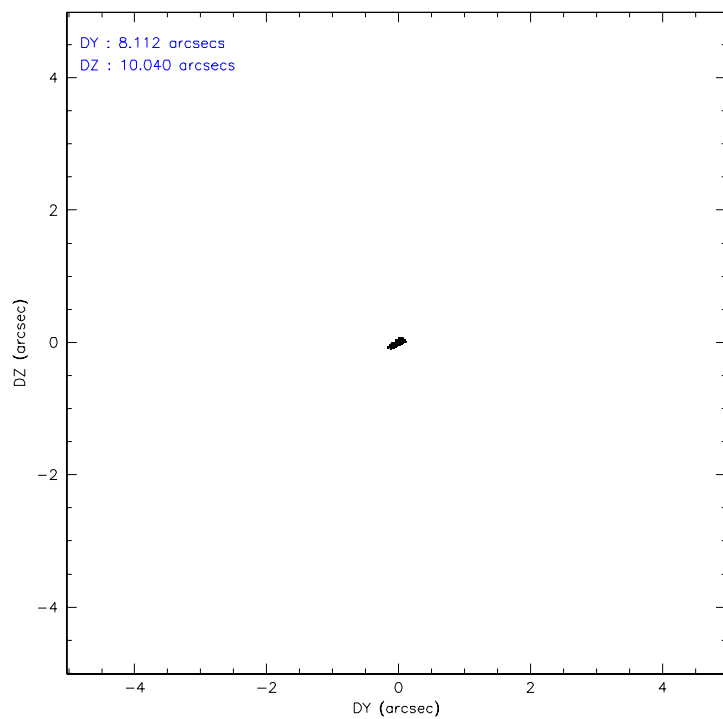
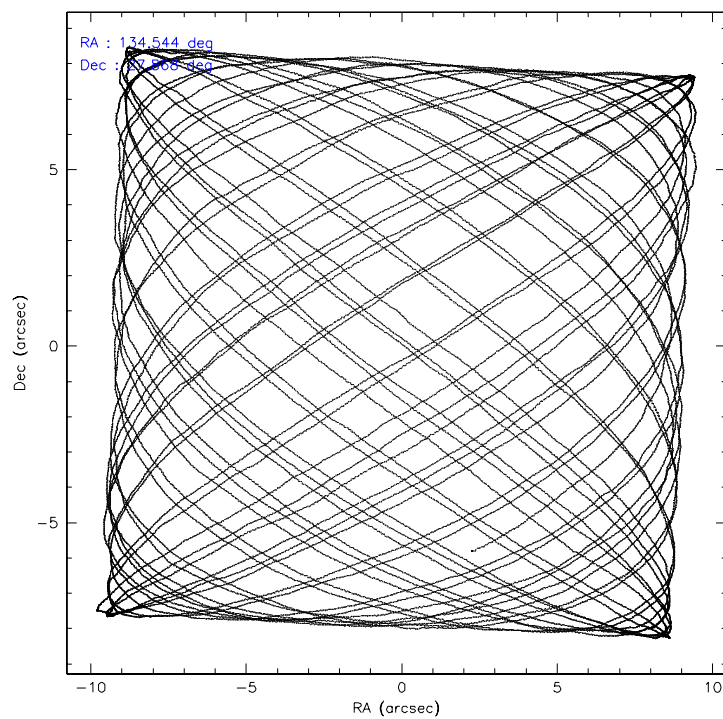
	ccd 2	ccd 3	ccd 5	ccd 6	ccd 7
level 1 events	140275	133577	192259	136721	147711
rejected events	127484	121190	96821	122822	85607
rejected %	90%	90%	50%	89%	57%

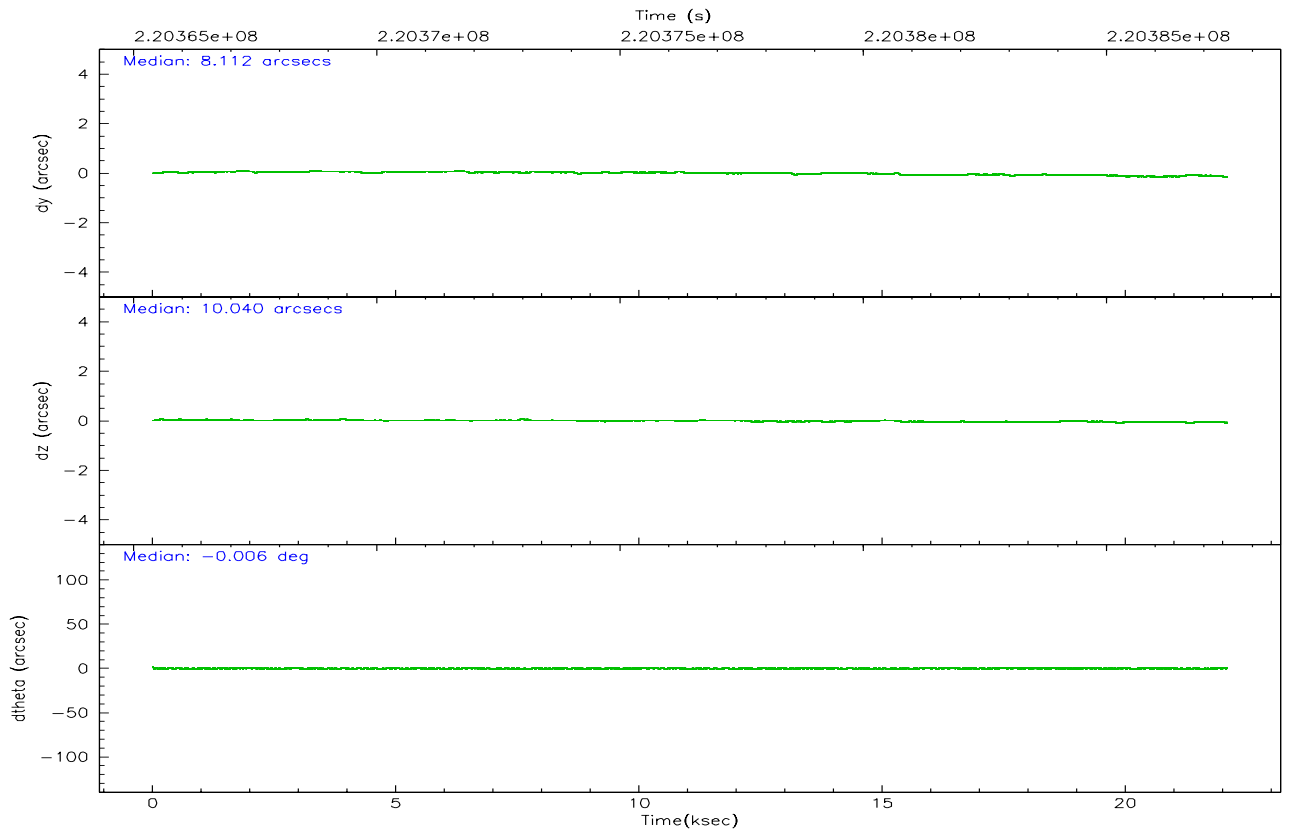
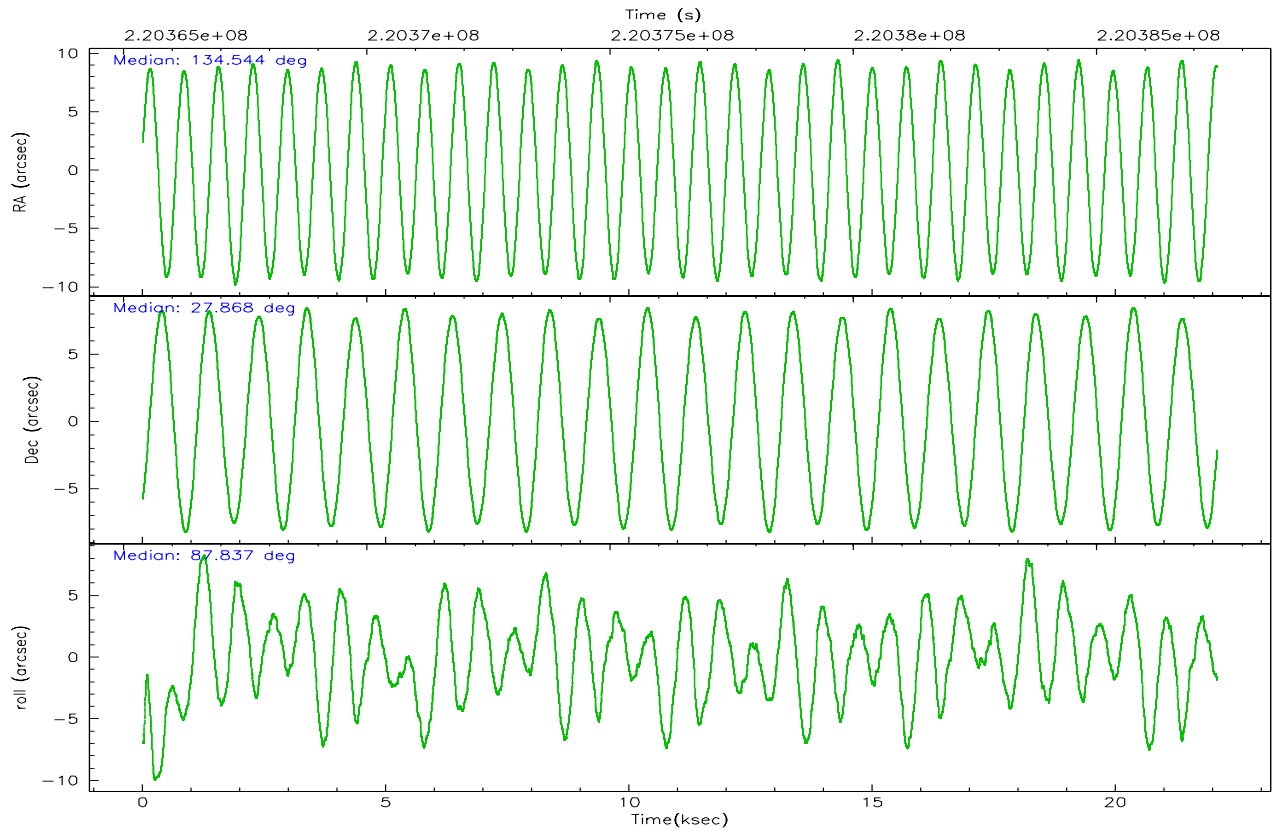
	ccd 2	ccd 3	ccd 5	ccd 6	ccd 7
grade 0 events	4750	4489	14228	4908	3725
	3%	3%	7%	3%	2%
grade 1 events	69	56	95	62	69
	0%	0%	0%	0%	0%
grade 2 events	2967	2644	28316	2989	15306
	2%	1%	14%	2%	10%
grade 3 events	1387	1417	2219	1526	3518
	0%	1%	1%	1%	2%
grade 4 events	1433	1435	2085	1502	3631
	1%	1%	1%	1%	2%
grade 5 events	4272	5184	9738	5490	11290
	3%	3%	5%	4%	7%
grade 6 events	2257	2405	48614	2980	35944
	1%	1%	25%	2%	24%
grade 7 events	123140	115947	86964	117264	74228
	87%	86%	45%	85%	50%

2.2 Compared Parameters

Parameter	Planned	Actual	Parameter	Planned	Actual
Instrument	ACIS	ACIS	Obspar format version number	6	6
Detector	ACIS-23567	ACIS-23567	Obspar file type	PREDICTED	ACTUAL
Grating	NONE	NONE	Obspar update status	NONE	UPDATED
Data mode	VFAINT	VFAINT	On-chip summing requested	N	N
Observation mode	POINTING	POINTING	Subarray requested	NONE	NONE
Pointing RA	134.558825	134.5440840319372	Alternating exposures requested	N	N
Pointing Dec	27.844480	27.86836371261725	Primary exposure time	0.000000	3.1
Pointing Roll	87.678535	87.84204845681671			
SIM focus pos (mm)	-0.684267	-0.6828225247311905			
SIM defocus (mm)	0	0.001444936568705701			
SIM translation stage pos (mm)	-190.132523	-190.1400660498719			
SIM translation stage offset (mm)	0	0.00754346686406393			
Observation start time	220366691.184000	220365209.01179			
Observation start date	2004-12-25T12:57:07	2004-12-25T12:33:29			
Observation end time	220387491.184000	220388035.76282			
Observation end date	2004-12-25T18:43:47	2004-12-25T18:53:55			
Read mode	TIMED	TIMED			

2.3 Aspect



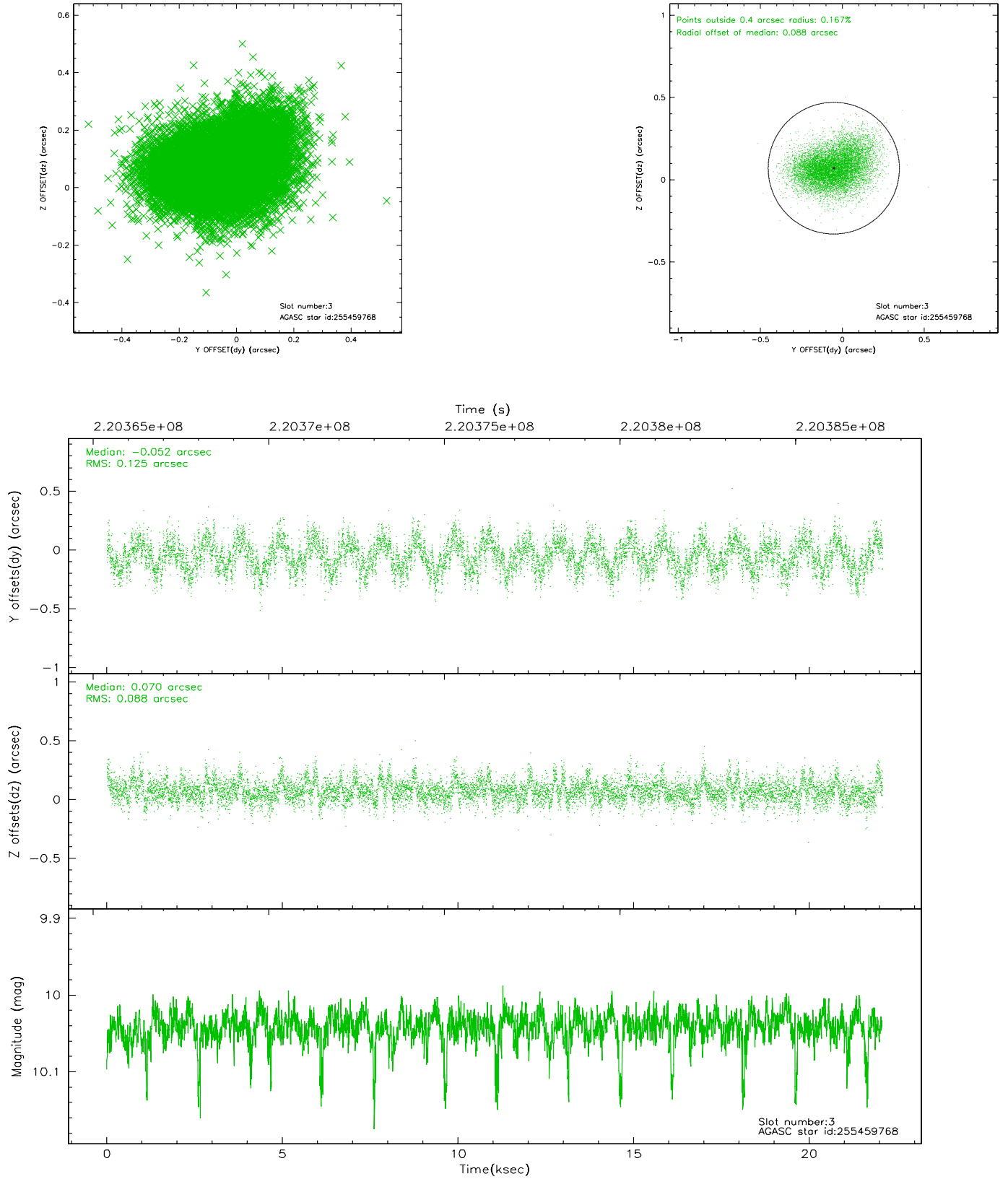


Slot Statistics

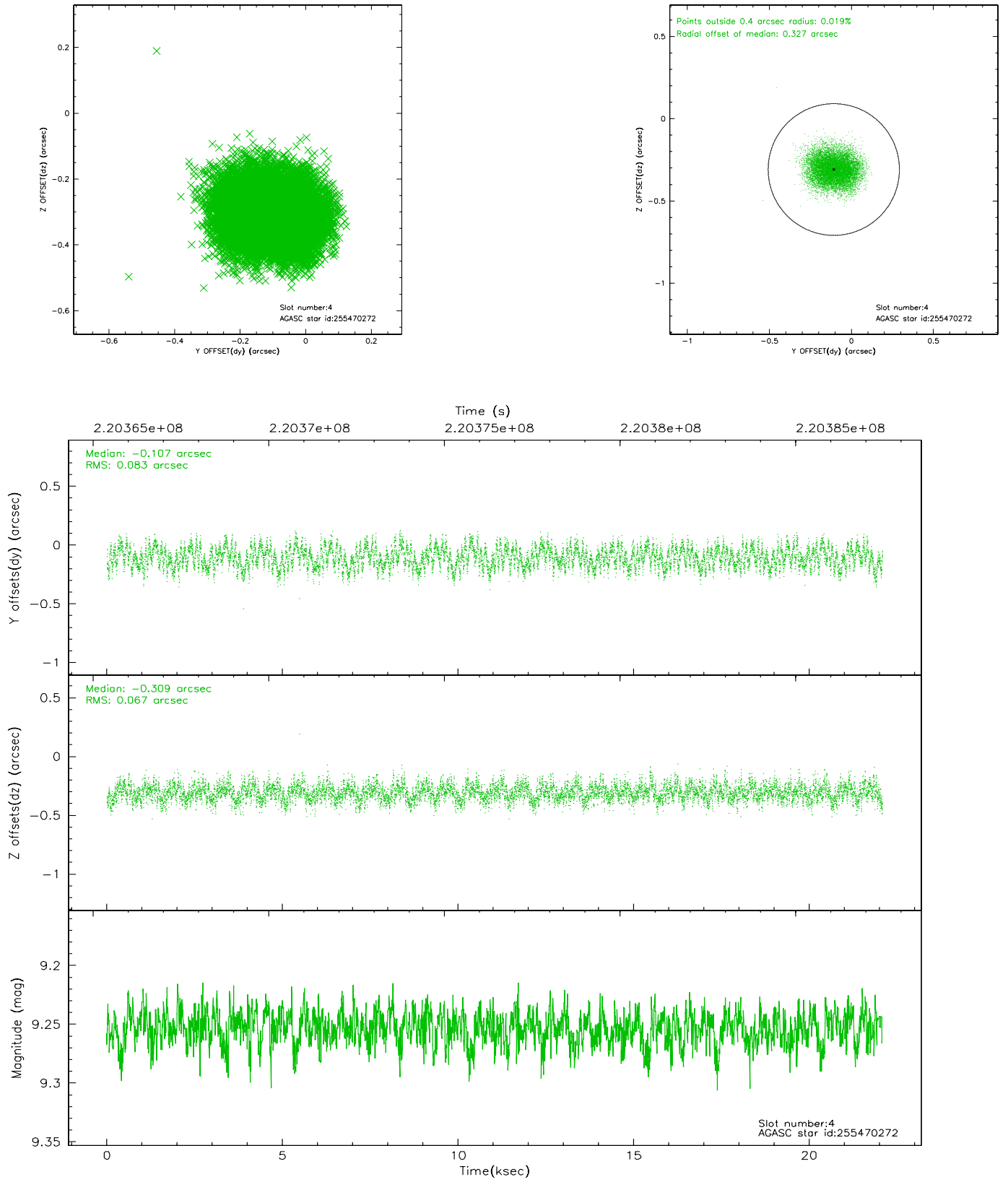
slot	status	id	mag	n_pts	med_dy	med_dz	dr1	dr2	ra	dec	mean_y	mean_z
0	FID	ACIS-S-2	7.10	5389	-0.030	0.001	0.007	0.010	0.000000	0.000000	-760.87	-1731.30
1	FID	ACIS-S-4	7.21	5388	0.070	0.014	0.005	0.010	0.000000	0.000000	2152.39	177.11
2	FID	ACIS-S-5	7.23	5389	-0.071	-0.006	0.007	0.011	0.000000	0.000000	-1813.60	170.83
3	GUIDE	255459768	10.04	10763	-0.052	0.070	0.163	0.266	133.896950	28.506403	2301.77	2189.47
4	GUIDE	255470272	9.25	10773	-0.107	-0.309	0.116	0.178	133.844161	28.114281	885.06	2307.27
5	GUIDE	255984792	9.36	10772	0.103	0.041	0.089	0.140	134.698273	27.233445	-2179.25	-534.93
6	GUIDE	255986024	9.06	10775	-0.002	0.120	0.106	0.165	135.247679	27.336469	-1731.94	-2274.95
7	GUIDE	256381208	9.28	10771	0.058	0.074	0.092	0.149	134.758821	27.635369	-725.95	-667.84

2.4 Star Slots

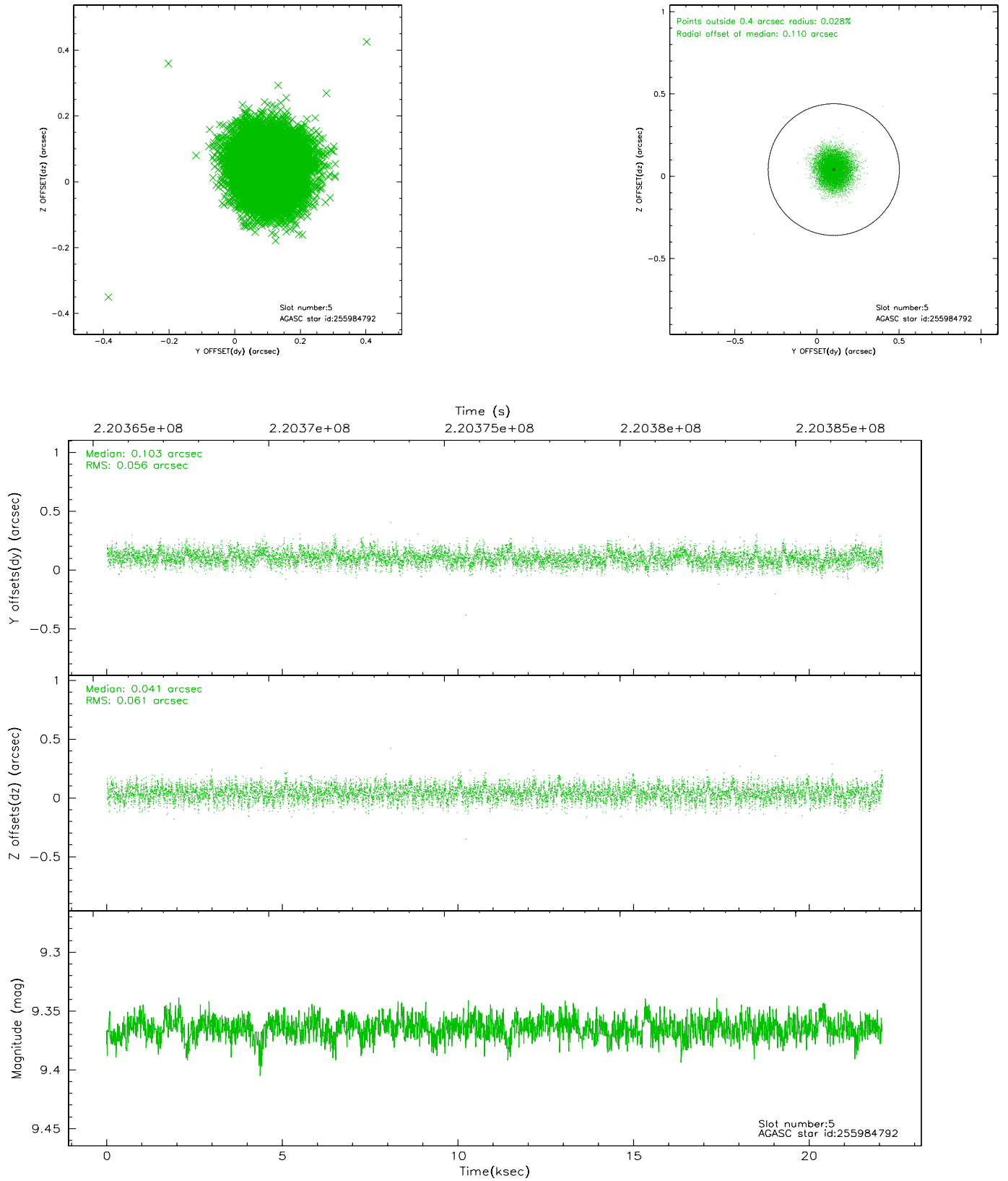
2.4.1 Slot 3



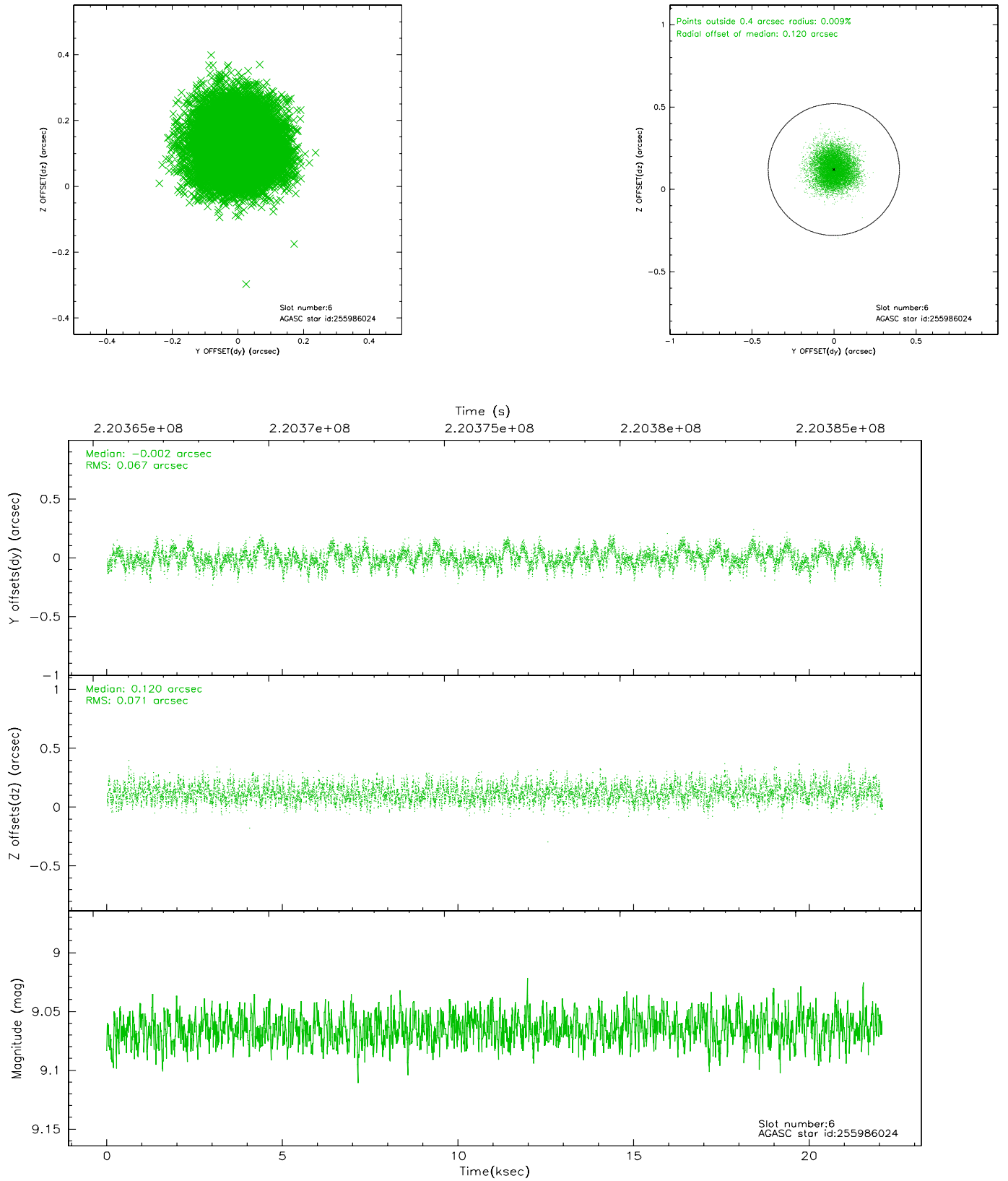
2.4.2 Slot 4



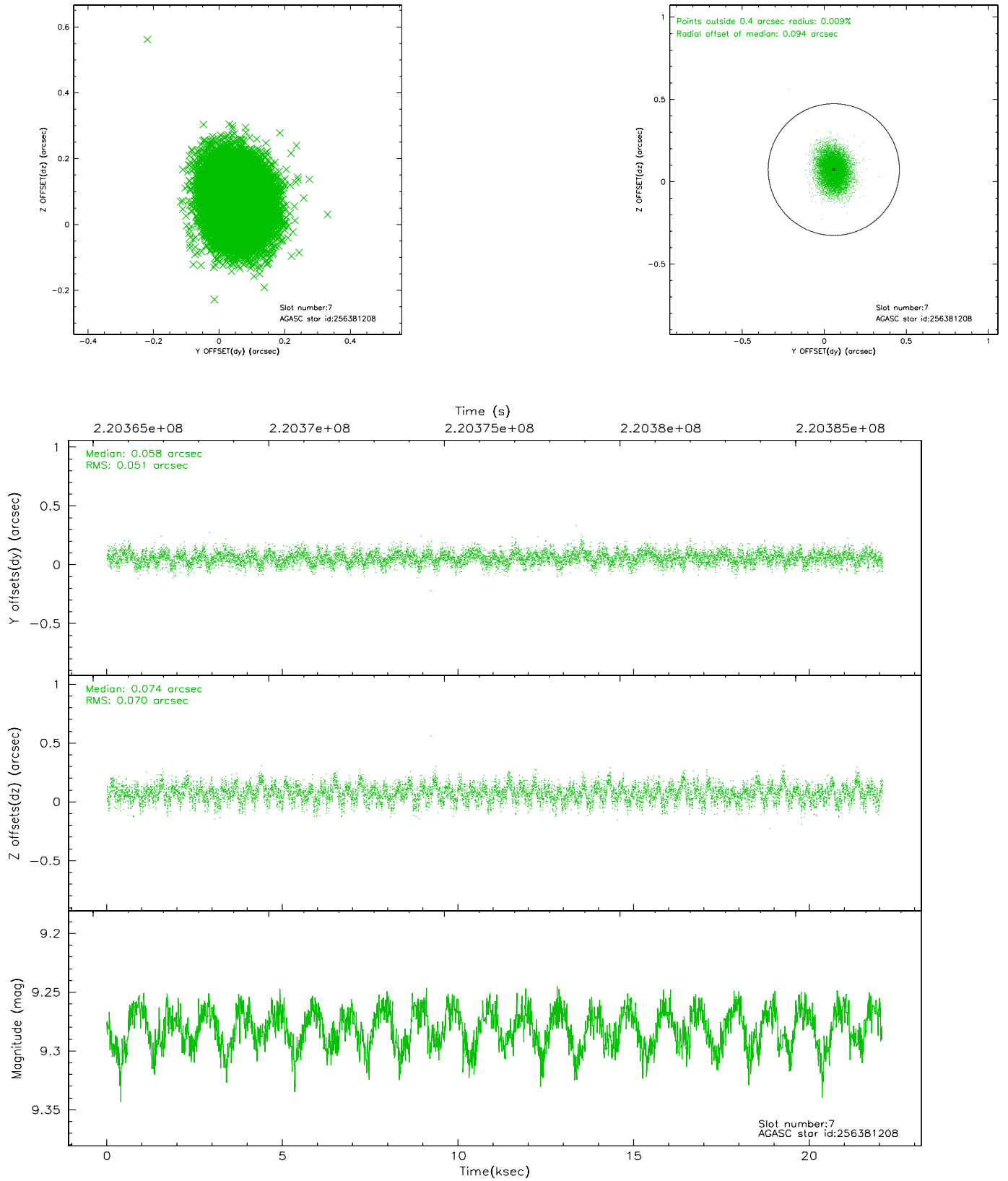
2.4.3 Slot 5



2.4.4 Slot 6

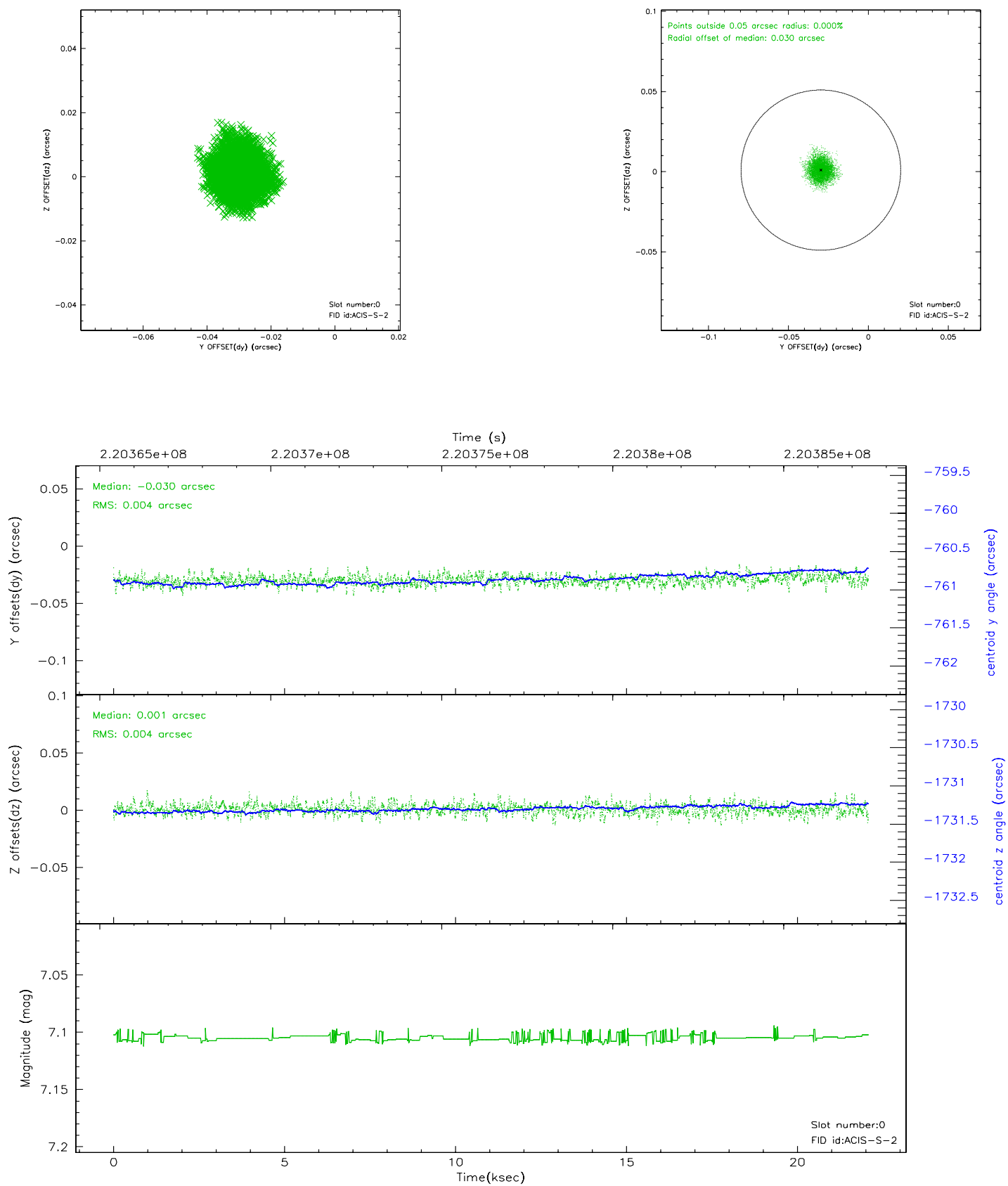


2.4.5 Slot 7

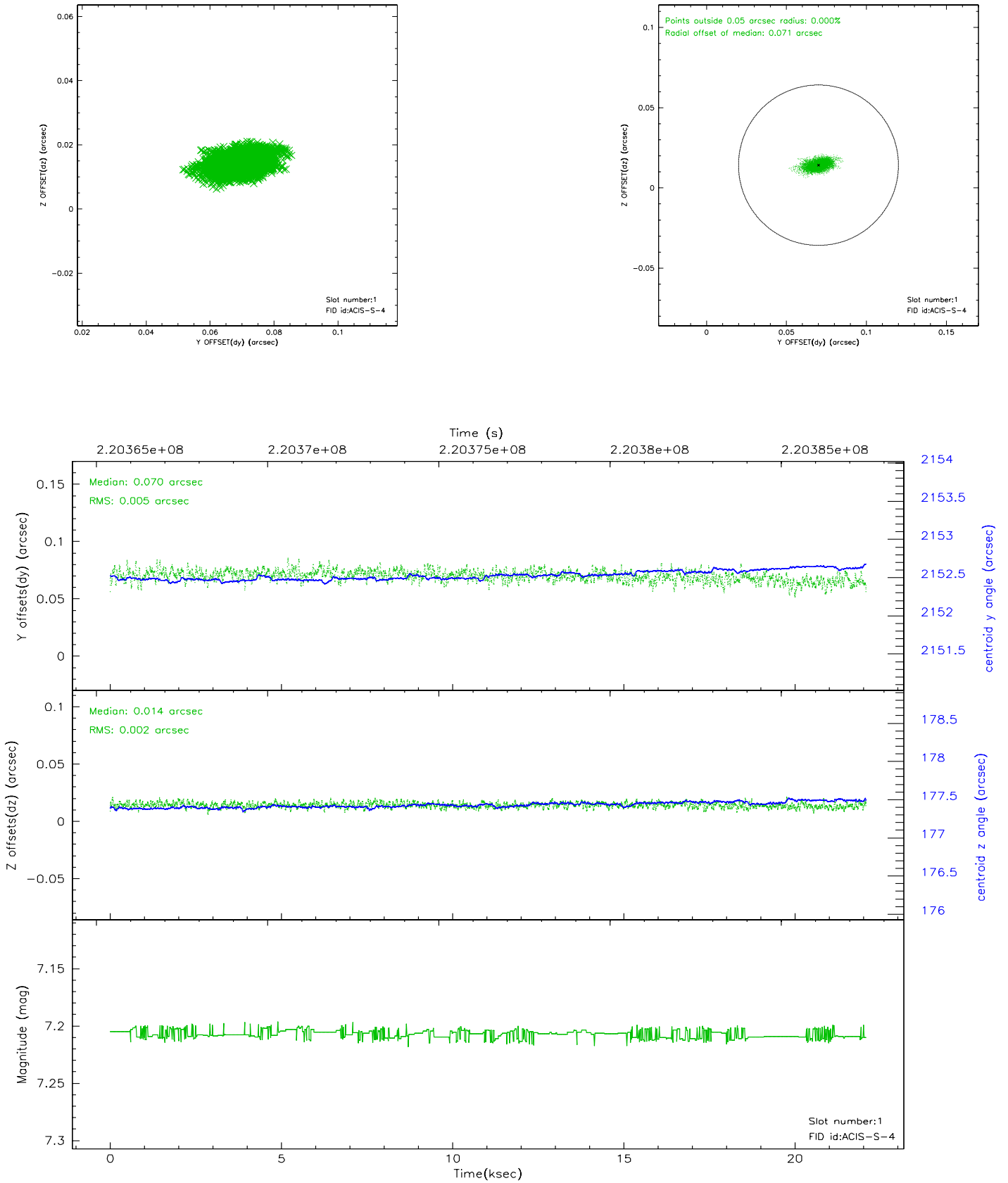


2.5 FID Slots

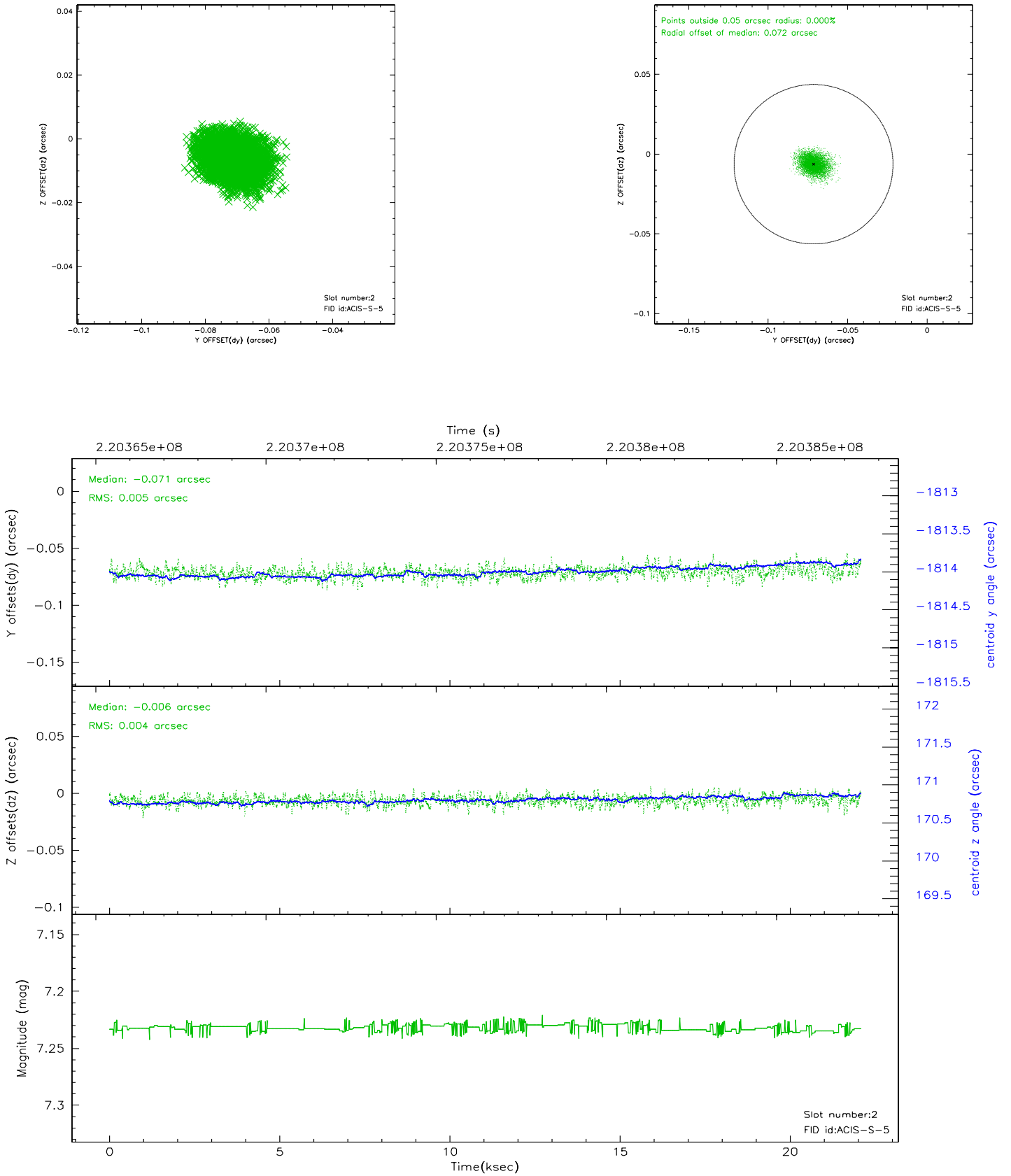
2.5.1 Slot 0



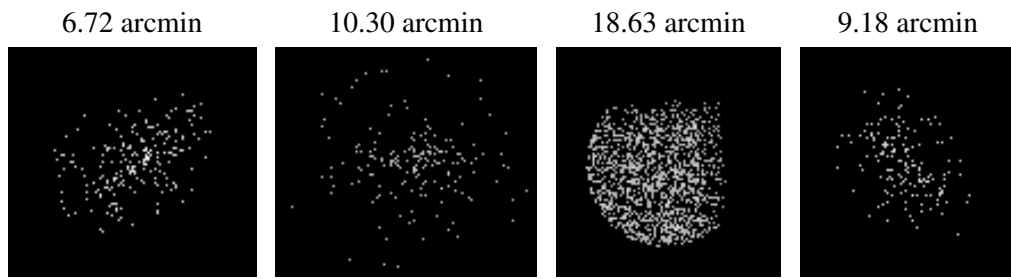
2.5.2 Slot 1



2.5.3 Slot 2



3 Point Sources



A Summary

A.1 Status

V&V Scientist	Beth Sundheim
V&V Date (YYYY-MM-DD)	2006.04.07
V&V Edition	1
V&V Disposition and Status	OK
V&V Charge Time	20.83819

A.2 Comments