

V&V Reference Report

L2 ASCDS Version : 8.4.4

Observation 58141 - L2 Version 2
Chandra X-Ray Center

L2 Processing Date : May 4 2012

Contents

1	Front	2
2	OBI	3
2.1	OBI	3
2.1.1	Images	3
2.1.2	Bias	3
2.1.3	Parameters	4
2.1.4	Events	4
2.2	Compared Parameters	5
2.3	Star Slots	6
2.4	FID Slots	6
A	Summary	7
A.1	Status	7
A.2	Comments	7

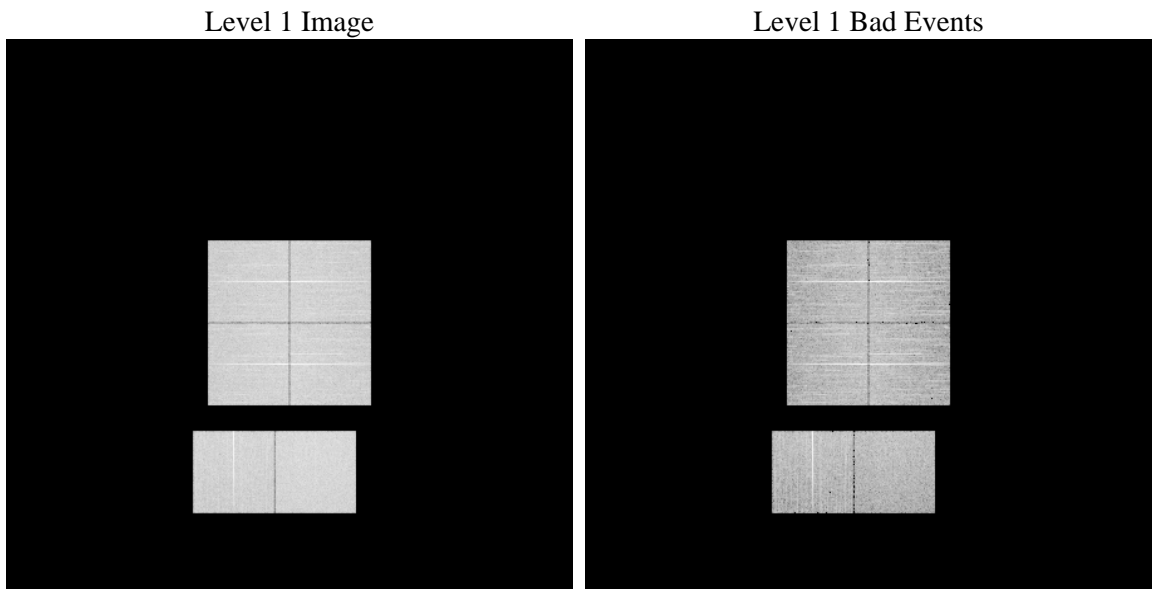
1 Front

seq_num	 	Sequence number
obs_id	58141	Observation id
title	ACIS-012367 diagnostics	Proposal title
observer	CHANDRA engineering request/realtime commanding	Principal investig
object	 	Source name
dtcycle	0	
cycle	P	events from which exps? Prim/Second/Both
ra_targ	0.0	Observer's specified target RA [deg]
dec_targ	0.0	Observer's specified target Dec [deg]
ra_nom	280.02138700139	Nominal RA [deg]
dec_nom	-6.0192924130598	Nominal Dec [deg]
roll_nom	284.92920051383	Nominal Roll [deg]
revision	2	Processing version of data
ontime	7762.7194634676	Sum of GTIs [s]
livetime	7664.4232354727	Livetime [s]
ontime0	7762.6784234643	Sum of GTIs [s]
ontime1	7762.637383461	Sum of GTIs [s]
ontime2	7759.3553532362	Sum of GTIs [s]
ontime3	7762.7605034709	Sum of GTIs [s]
ontime6	7762.5553034544	Sum of GTIs [s]
ontime7	7762.7194634676	Sum of GTIs [s]
l2events	630940	Number of level 2 events

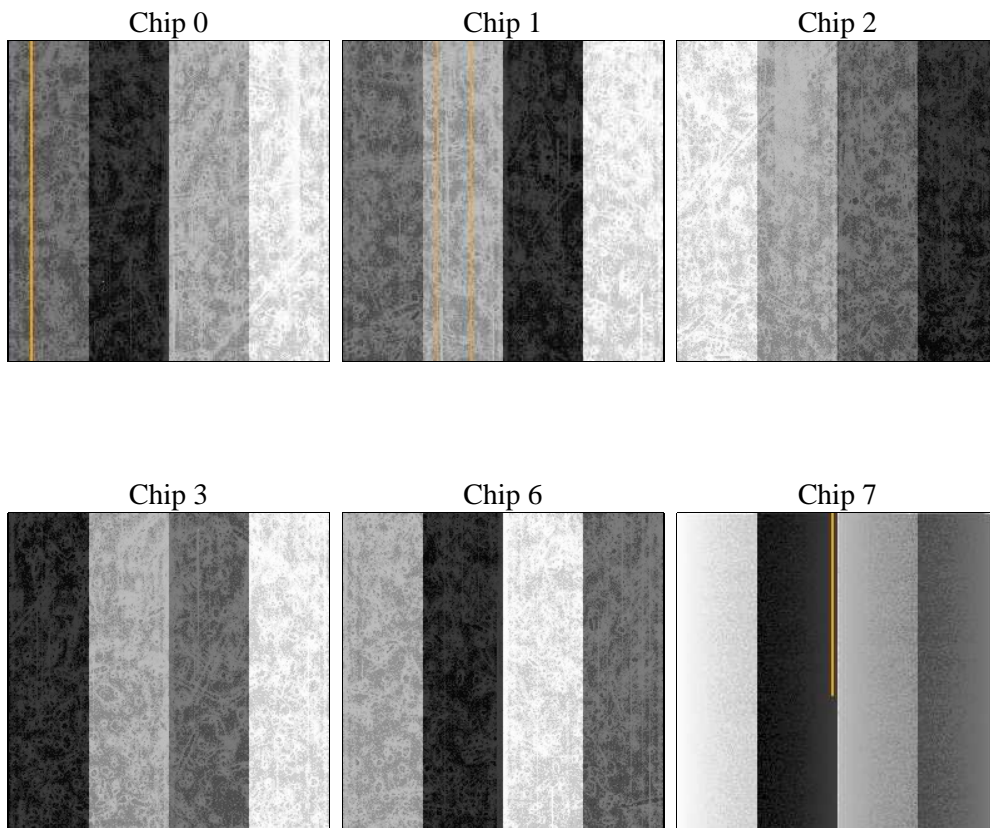
2 OBI

2.1 OBI

2.1.1 Images



2.1.2 Bias



2.1.3 Parameters

obi_num	1	Obi number	sched_exp_time	0.0	[s] Scheduled observation exposure time
ascdsver	8.4.4	Processing system revision	ontime	7762.7194634676	Sum of GTIs [s]
caldsver	4.4.9	 	ontime0	7762.6784234643	Sum of GTIs [s]
date	2012-05-04T03:18:02	Date and time of file creation	ontime1	7762.637383461	Sum of GTIs [s]
revision	2	Processing version of data	ontime2	7759.3553532362	Sum of GTIs [s]
			ontime3	7762.7605034709	Sum of GTIs [s]
			ontime6	7762.5553034544	Sum of GTIs [s]
			ontime7	7762.7194634676	Sum of GTIs [s]
			l1events	1076778	Number of level 1 events

2.1.4 Events

	ccd 0	ccd 1	ccd 2	ccd 3	ccd 6	ccd 7		ccd 0	ccd 1	ccd 2	ccd 3	ccd 6	ccd 7
level 1 events	171970	172520	177662	176052	178019	200555	grade 0 events	56271	55998	57600	57669	57667	28508
rejected events	67667	67803	72991	71102	69476	61863		32%	32%	32%	32%	32%	14%
rejected %	39%	39%	41%	40%	39%	30%	grade 1 events	437	307	456	443	370	176
								0%	0%	0%	0%	0%	0%
							grade 2 events	18786	19093	18108	18375	19149	30017
								10%	11%	10%	10%	10%	14%
							grade 3 events	6931	6860	6967	7004	7032	13329
								4%	3%	3%	3%	3%	6%
							grade 4 events	6844	6874	7067	7062	6976	13079
								3%	3%	3%	4%	3%	6%
							grade 5 events	3768	3871	3461	4134	4150	10498
								2%	2%	1%	2%	2%	5%
							grade 6 events	15512	15934	14975	14884	17760	53803
								9%	9%	8%	8%	9%	26%
							grade 7 events	63421	63583	69028	66481	64915	51145
								36%	36%	38%	37%	36%	25%

2.2 Compared Parameters

Parameter	Planned	Actual
Instrument	ACIS	ACIS
Detector	ACIS-012367	ACIS-012367
Grating	NONE	NONE
Data mode	FAINT	FAINT
Observation mode	SECONDARY	SECONDARY
[deg] Pointing RA	0	280.0213870013882
[deg] Pointing Dec	0	-6.019292413059762
[deg] Pointing Roll	0.0	284.9292005138334
[mm] SIM focus pos	-0.782348	-0.7809083437167272
[mm] SIM defocus	0	0.7524282956875696
[mm] SIM translation stage pos	-233.592463	250.466033080201
[mm] SIM translation stage offset	0	-0.01005468664627074
[s] Observation start time (MET)	310700726.43184	310700725.40684
Observation start date	2007-11-06T01:45:26	2007-11-06T01:45:25
[s] Observation end time (MET)	310718040.732676	310718039.70767
Observation end date	2007-11-06T06:34:01	2007-11-06T06:33:59
Read mode	TIMED	TIMED

Parameter	Planned	Actual
Obspar format version number	7	7
Obspar file type	PREDICTED	ACTUAL
Obspar update status	NONE	UPDATED
On-chip summing requested	N	N
Subarray requested	NONE	NONE
Alternating exposures requested	N	N
[s] Primary exposure time	3.2	3.2

2.3 Star Slots

2.4 FID Slots

A Summary

A.1 Status

V&V Scientist	Jen Lauer
V&V Date (YYYY-MM-DD)	2012.05.04
V&V Edition	1
V&V Disposition and Status	OK
V&V Charge Time	7.7627194634676

A.2 Comments