

V&V Reference Report

L2 ASCDS Version : 7.6.7.1

Observation 5801 - L2 Version 002
Chandra X-Ray Center

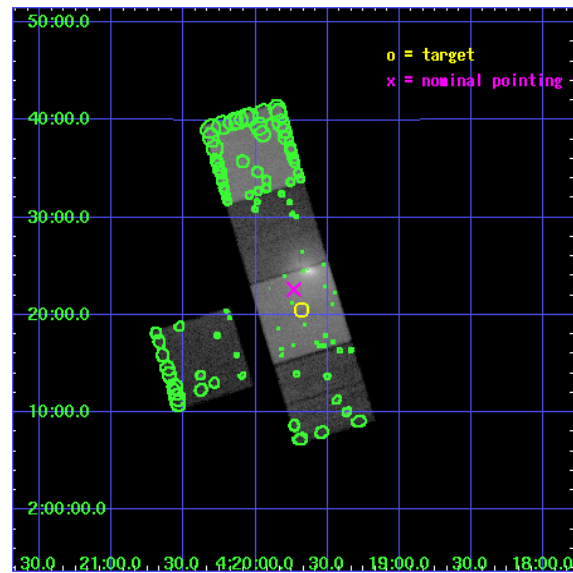
L2 Processing Date : Apr 2 2006

Contents

1	Front	2
2	OBI	3
2.1	OBI	3
2.1.1	Images	3
2.1.2	Bias	3
2.1.3	Parameters	4
2.1.4	Events	4
2.2	Compared Parameters	5
2.3	Aspect	6
2.4	Star Slots	9
2.4.1	Slot 3	9
2.4.2	Slot 4	10
2.4.3	Slot 5	11
2.4.4	Slot 6	12
2.4.5	Slot 7	13
2.5	FID Slots	14
2.5.1	Slot 0	14
2.5.2	Slot 1	15
2.5.3	Slot 2	16
3	Point Sources	17
A	Summary	18
A.1	Status	18
A.2	Comments	18

1 Front

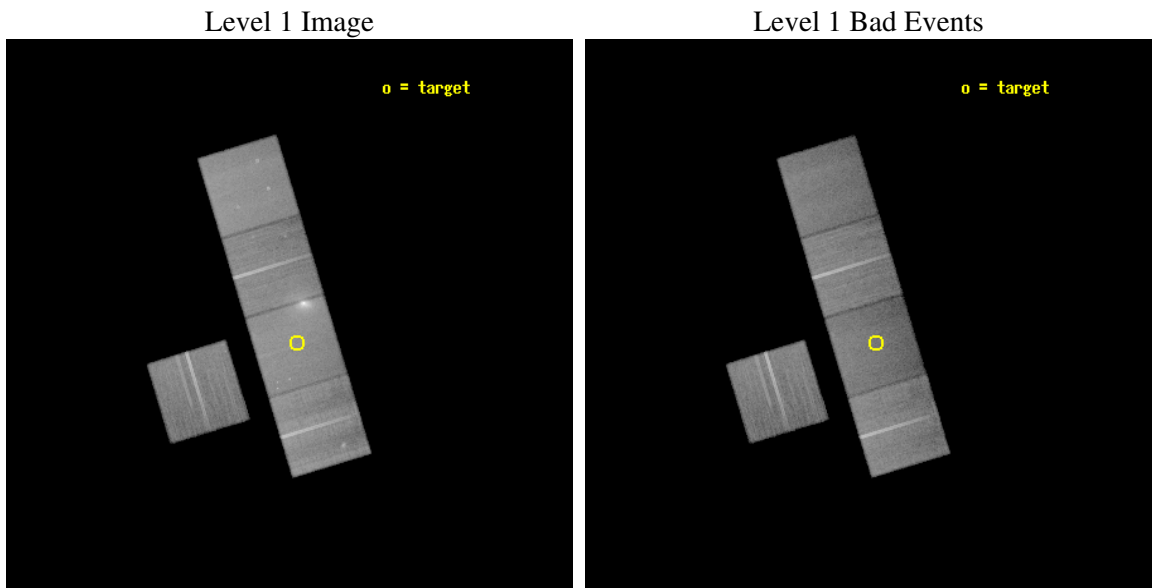
seq_num	800514
obs_id	5801
title	Intracluster Gas Velocity Tomography in RXJ0419.6+0225
observer	Dr Renato Dupke
object	RXJ0419.6+0225(OFF2)
dtcycle	0
cycle	P
ra_targ	64.920833
dec_targ	2.341667
ra_nom	64.933350060683
dec_nom	2.3768899548611
roll_nom	73.158776643386
revision	2
ontime	45036.799913406
livetime	44448.360966928
ontime3	45033.658903241
ontime5	45036.799913406
ontime6	45027.377012283
ontime7	45036.799913406
ontime8	45036.799913406
l2events	537162



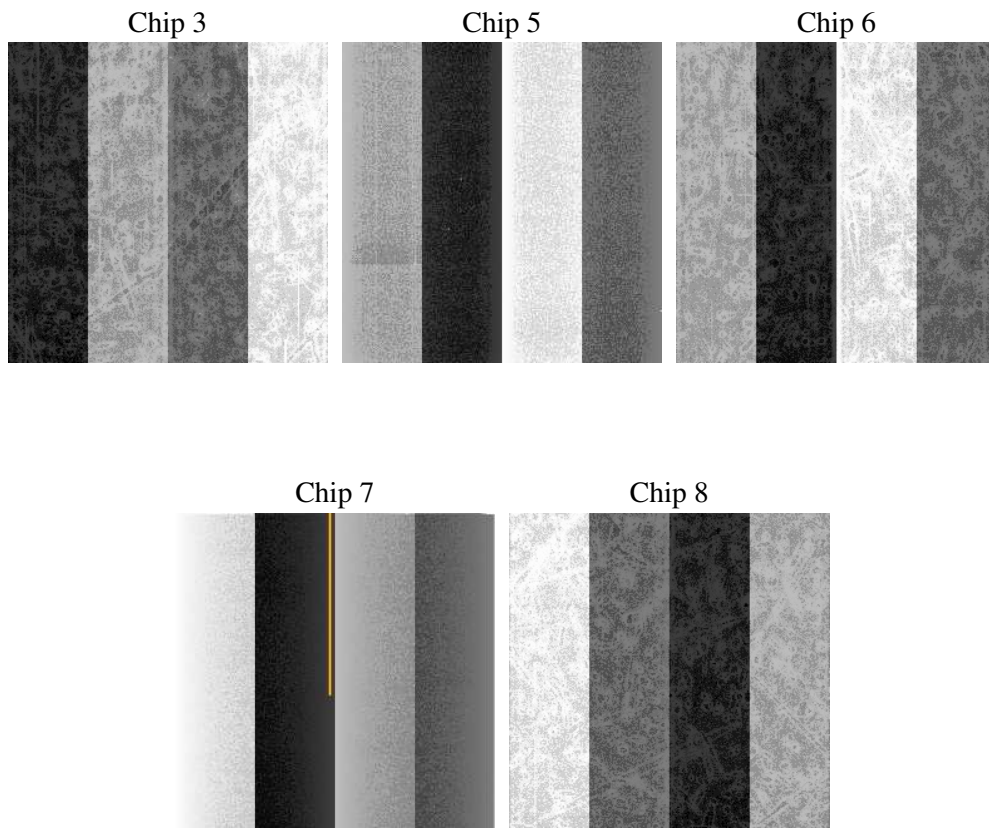
2 OBI

2.1 OBI

2.1.1 Images



2.1.2 Bias



2.1.3 Parameters

obi_num	0
ascdsver	7.6.7.1
caldbver	3.2.1
date	2006-04-02T18:28:47
revision	2

sched_exp_time	45000.000000
ontime	45042.153705955
ontime3	45039.012675852
ontime5	45042.153715849
ontime6	45032.730784893
ontime7	45042.153705955
ontime8	45042.153686017
l1events	1842074

2.1.4 Events

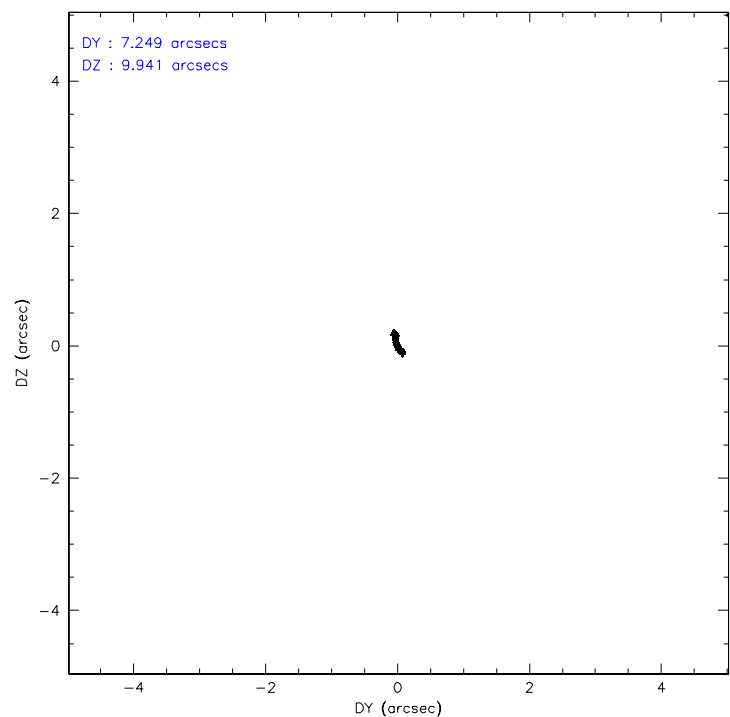
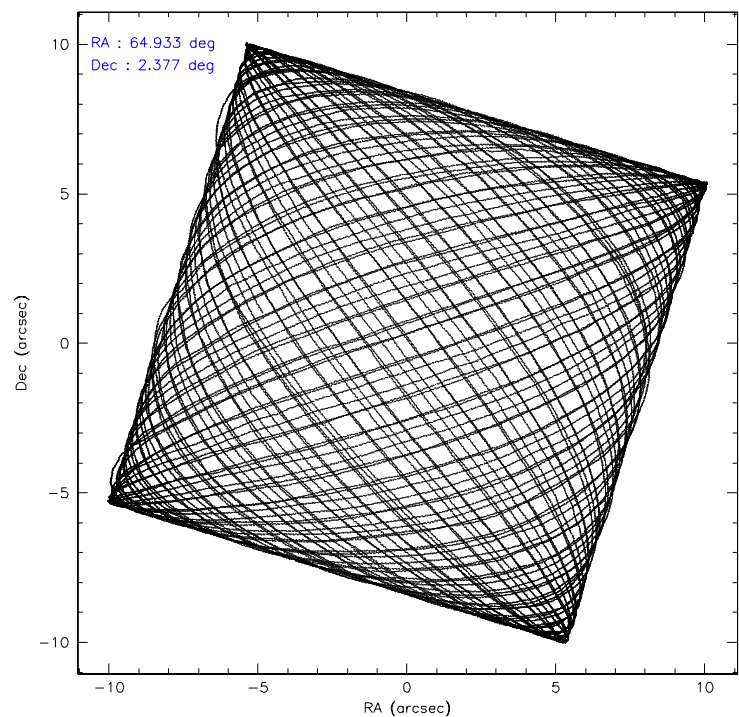
	ccd 3	ccd 5	ccd 6	ccd 7	ccd 8
level 1 events	293049	400122	347937	420587	380379
rejected events	262834	210209	277692	193404	289433
rejected %	89%	52%	79%	45%	76%

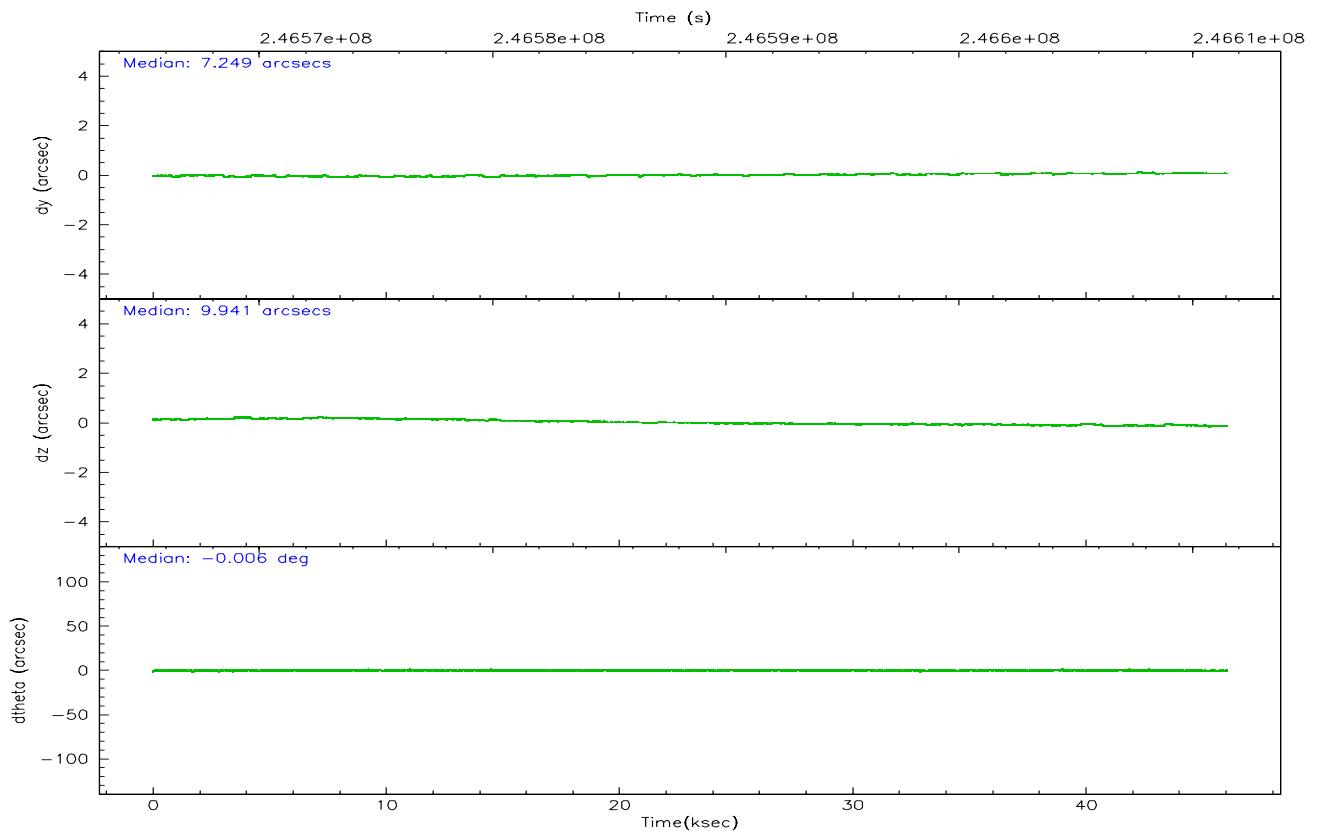
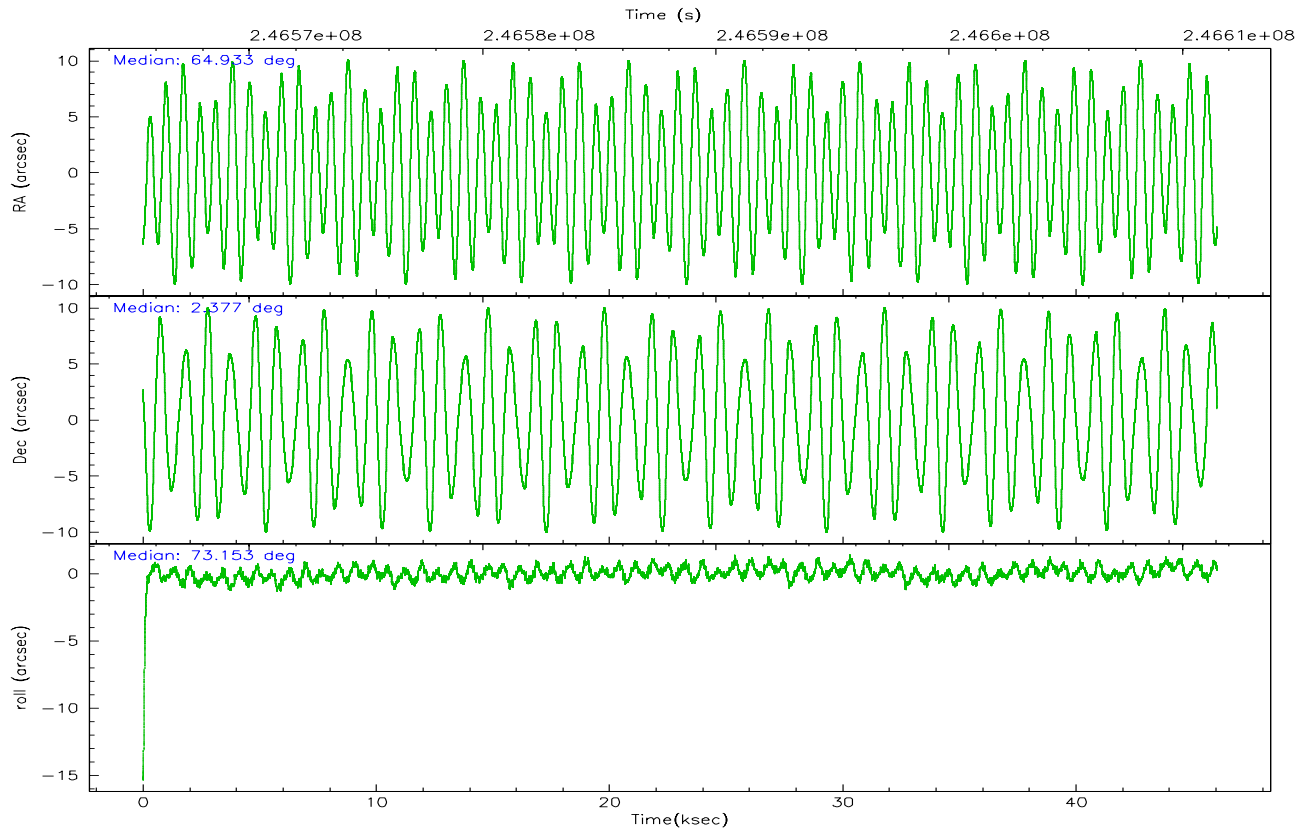
	ccd 3	ccd 5	ccd 6	ccd 7	ccd 8
grade 0 events	12173	10330	44198	30743	30737
	4%	2%	12%	7%	8%
grade 1 events	162	204	254	165	284
	0%	0%	0%	0%	0%
grade 2 events	6013	59756	10125	59884	19644
	2%	14%	2%	14%	5%
grade 3 events	3260	5292	4470	18306	9322
	1%	1%	1%	4%	2%
grade 4 events	3193	5019	4286	18021	8940
	1%	1%	1%	4%	2%
grade 5 events	11470	21298	12164	25391	17185
	3%	5%	3%	6%	4%
grade 6 events	5579	109524	7173	100246	22304
	1%	27%	2%	23%	5%
grade 7 events	251199	188699	265267	167831	271963
	85%	47%	76%	39%	71%

2.2 Compared Parameters

Parameter	Planned	Actual	Parameter	Planned	Actual
Instrument	ACIS	ACIS	Obspar format version number	6	6
Detector	ACIS-35678	ACIS-35678	Obspar file type	PREDICTED	ACTUAL
Grating	NONE	NONE	Obspar update status	NONE	UPDATED
Data mode	VFAINT	VFAINT	On-chip summing requested	N	N
Observation mode	POINTING	POINTING	Subarray requested	NONE	NONE
Pointing RA	64.939925	64.9333500606833	Alternating exposures requested	N	N
Pointing Dec	2.350475	2.376889954861138	Primary exposure time	0.000000	3.1
Pointing Roll	73.001877	73.15877664338626			
SIM focus pos (mm)	-0.684267	-0.6828225247311905			
SIM defocus (mm)	0	0.001444936568705701			
SIM translation stage pos (mm)	-190.132523	-190.1400660498719			
SIM translation stage offset (mm)	0	0.00754346686406393			
Observation start time	246566487.184000	246565127.06853			
Observation start date	2005-10-24T18:40:23	2005-10-24T18:18:47			
Observation end time	246611487.184000	246612060.79569			
Observation end date	2005-10-25T07:10:23	2005-10-25T07:21:00			
Read mode	TIMED	TIMED			

2.3 Aspect



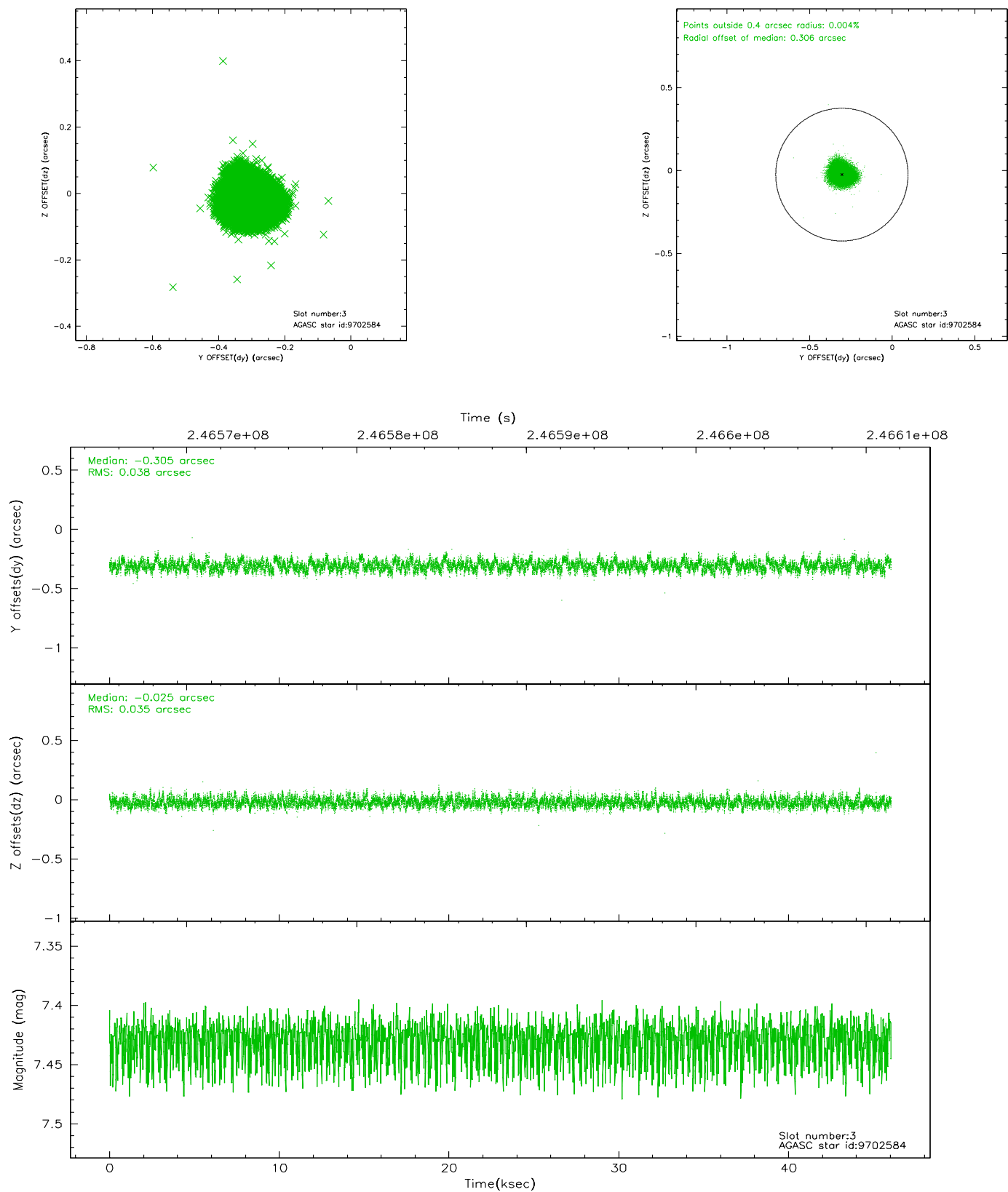


Slot Statistics

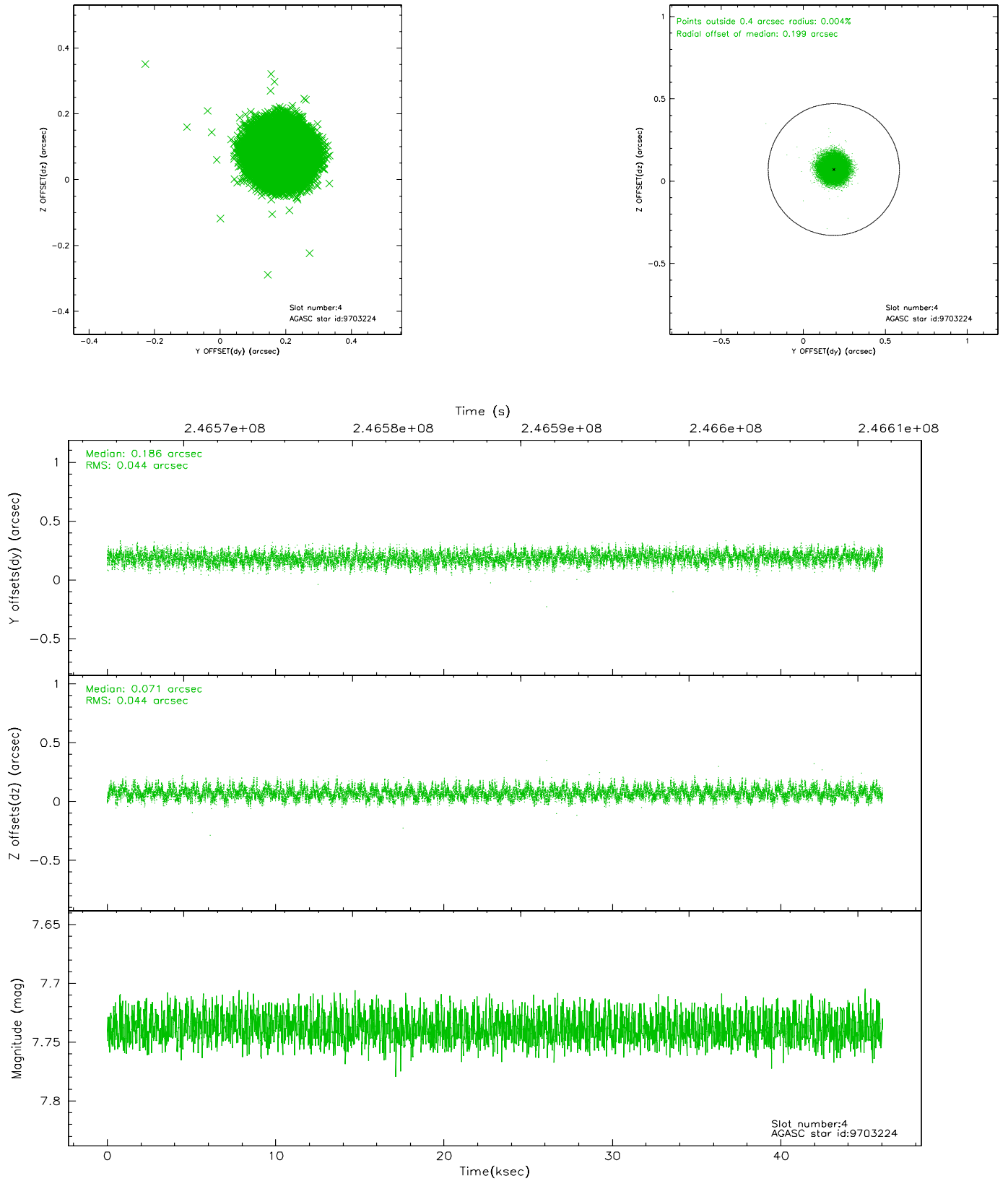
slot	status	id	mag	n_pts	med_dy	med_dz	dr1	dr2	ra	dec	mean_y	mean_z
0	FID	ACIS-S-1	7.19	11232	0.016	-0.008	0.011	0.018	0.000000	0.000000	936.06	-1726.84
1	FID	ACIS-S-5	7.24	11232	-0.046	0.016	0.007	0.013	0.000000	0.000000	-1813.02	170.72
2	FID	ACIS-S-6	7.35	11230	0.009	0.004	0.011	0.018	0.000000	0.000000	401.59	814.68
3	GUIDE	9702584	7.43	22462	-0.305	-0.025	0.056	0.087	64.640935	2.470534	98.72	1154.80
4	GUIDE	9703224	7.74	22459	0.186	0.071	0.068	0.105	64.728794	1.773459	-2208.43	119.23
5	GUIDE	9830984	7.07	22464	-0.030	0.208	0.074	0.126	65.442956	2.390106	665.09	-1688.53
6	GUIDE	10093656	8.31	22461	0.023	0.011	0.061	0.098	64.910383	2.992173	2178.17	776.92
7	GUIDE	10092712	7.08	22464	0.118	-0.274	0.069	0.109	64.322459	2.529688	-31.79	2312.29

2.4 Star Slots

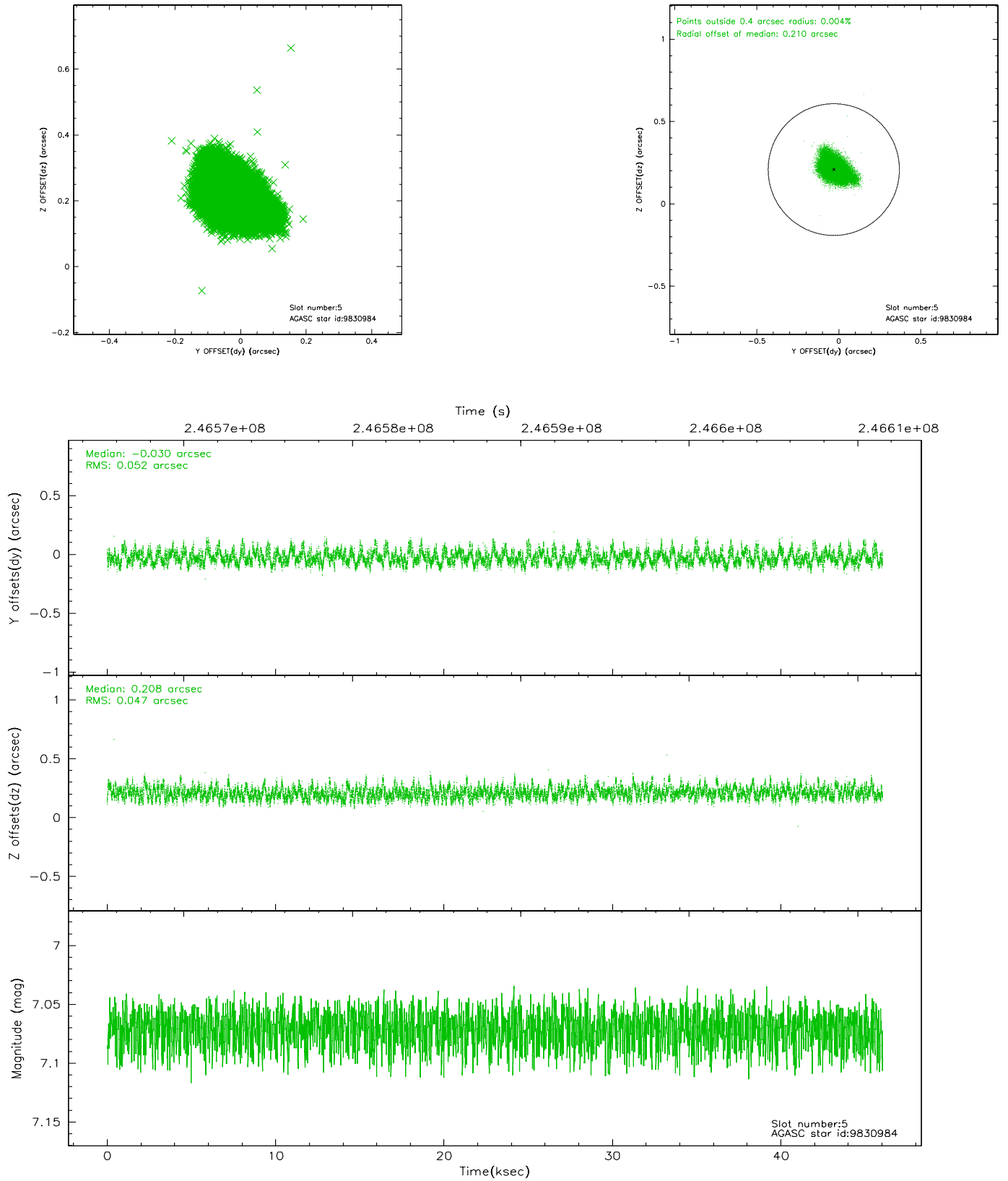
2.4.1 Slot 3



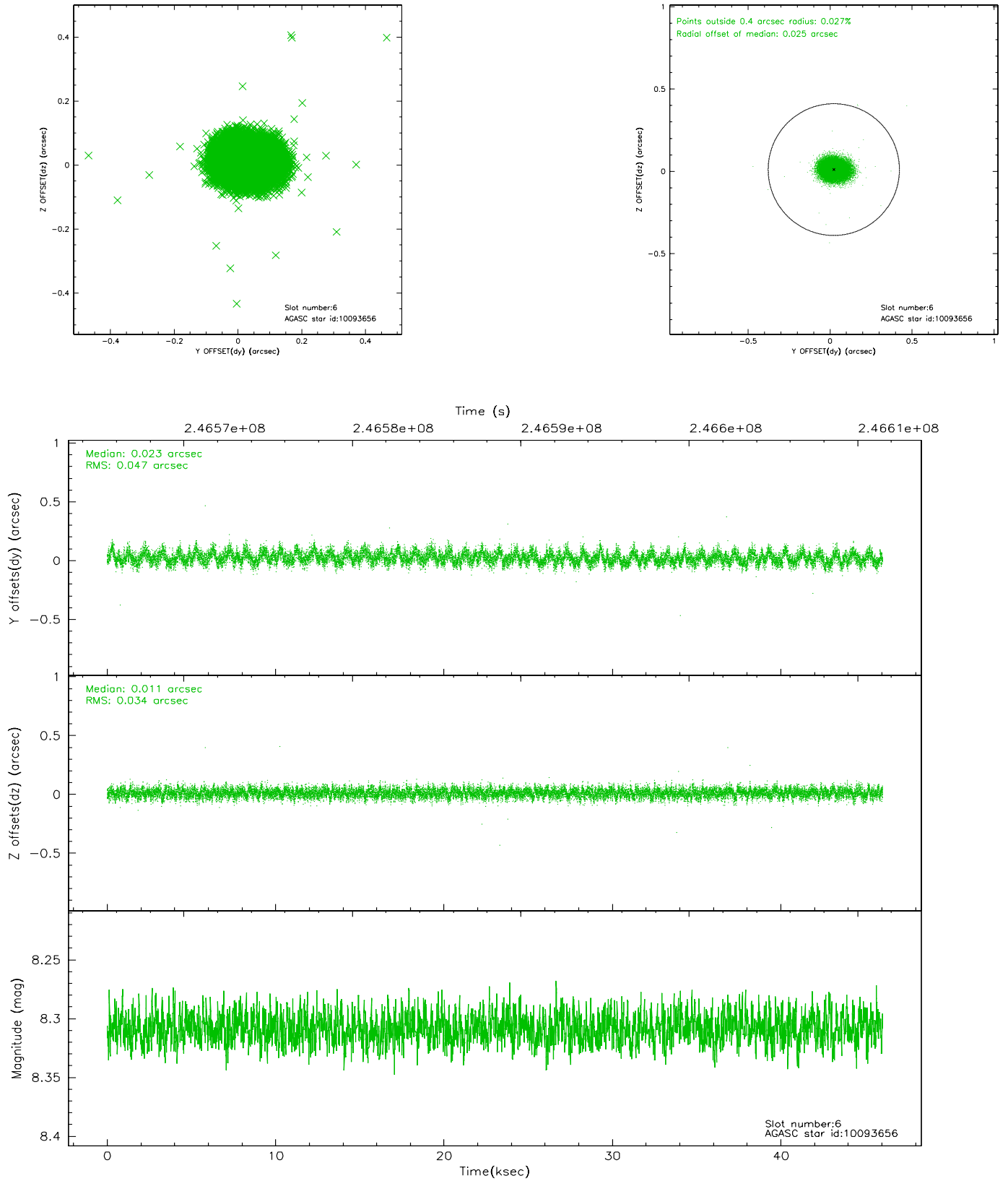
2.4.2 Slot 4



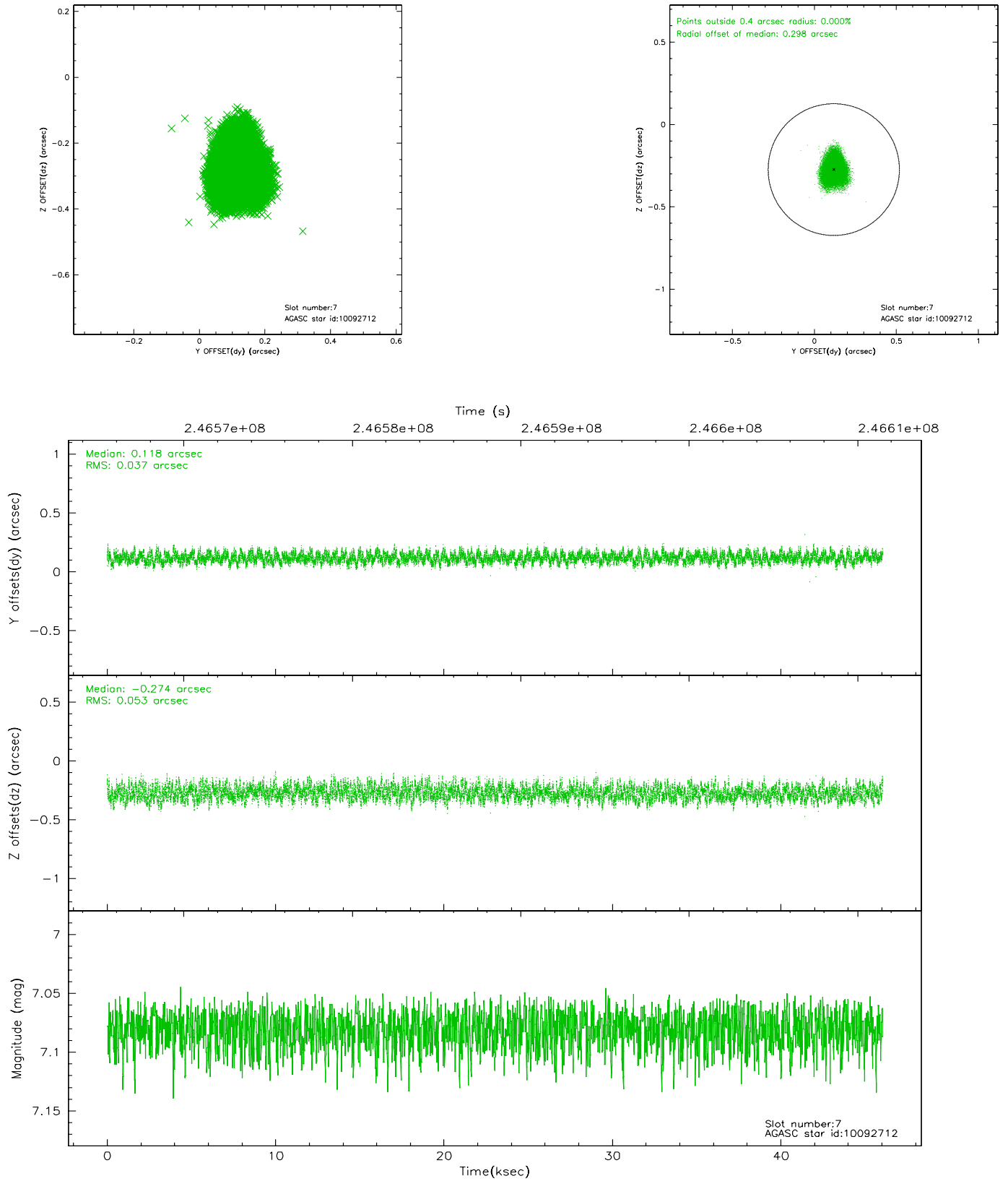
2.4.3 Slot 5



2.4.4 Slot 6

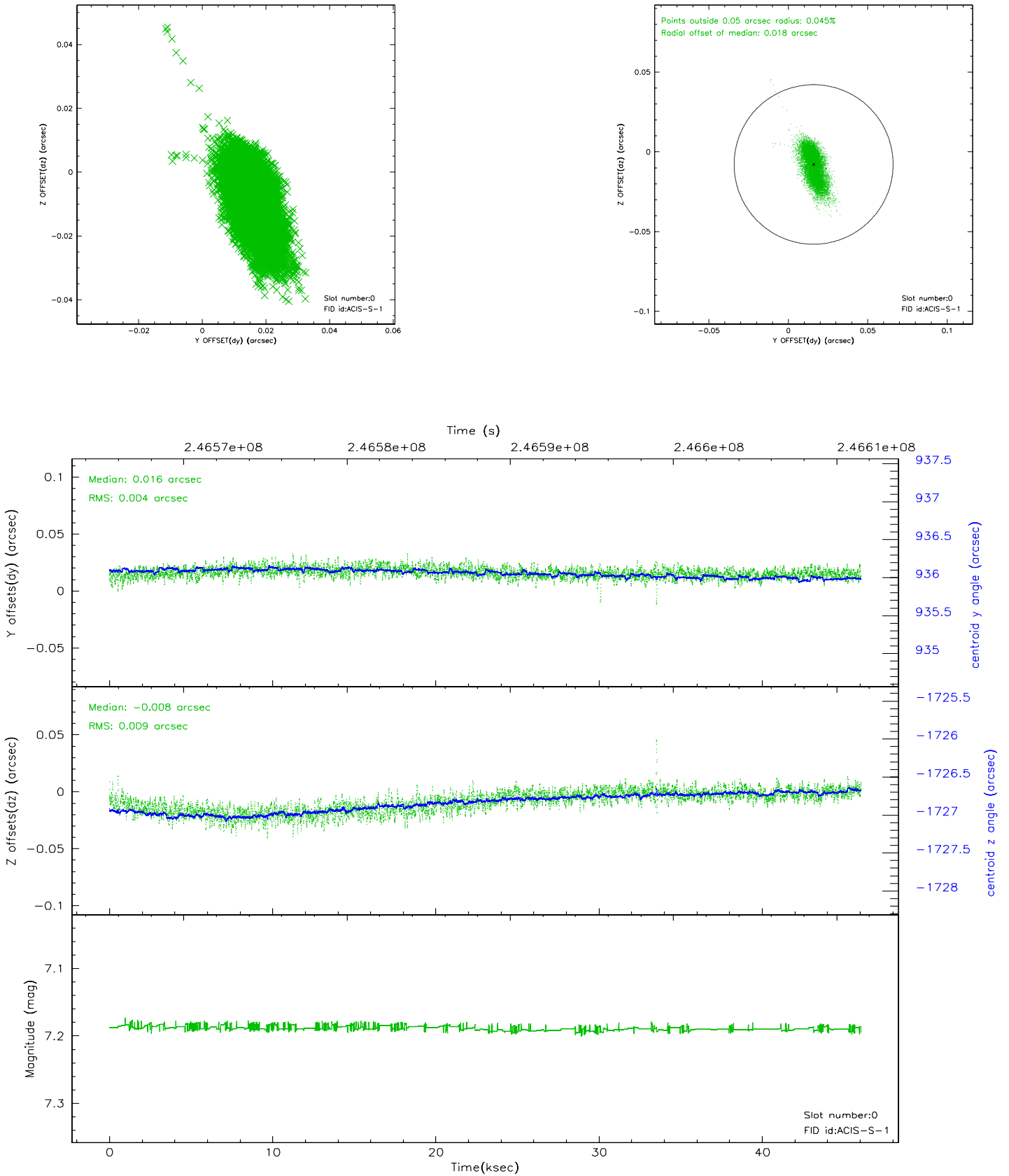


2.4.5 Slot 7

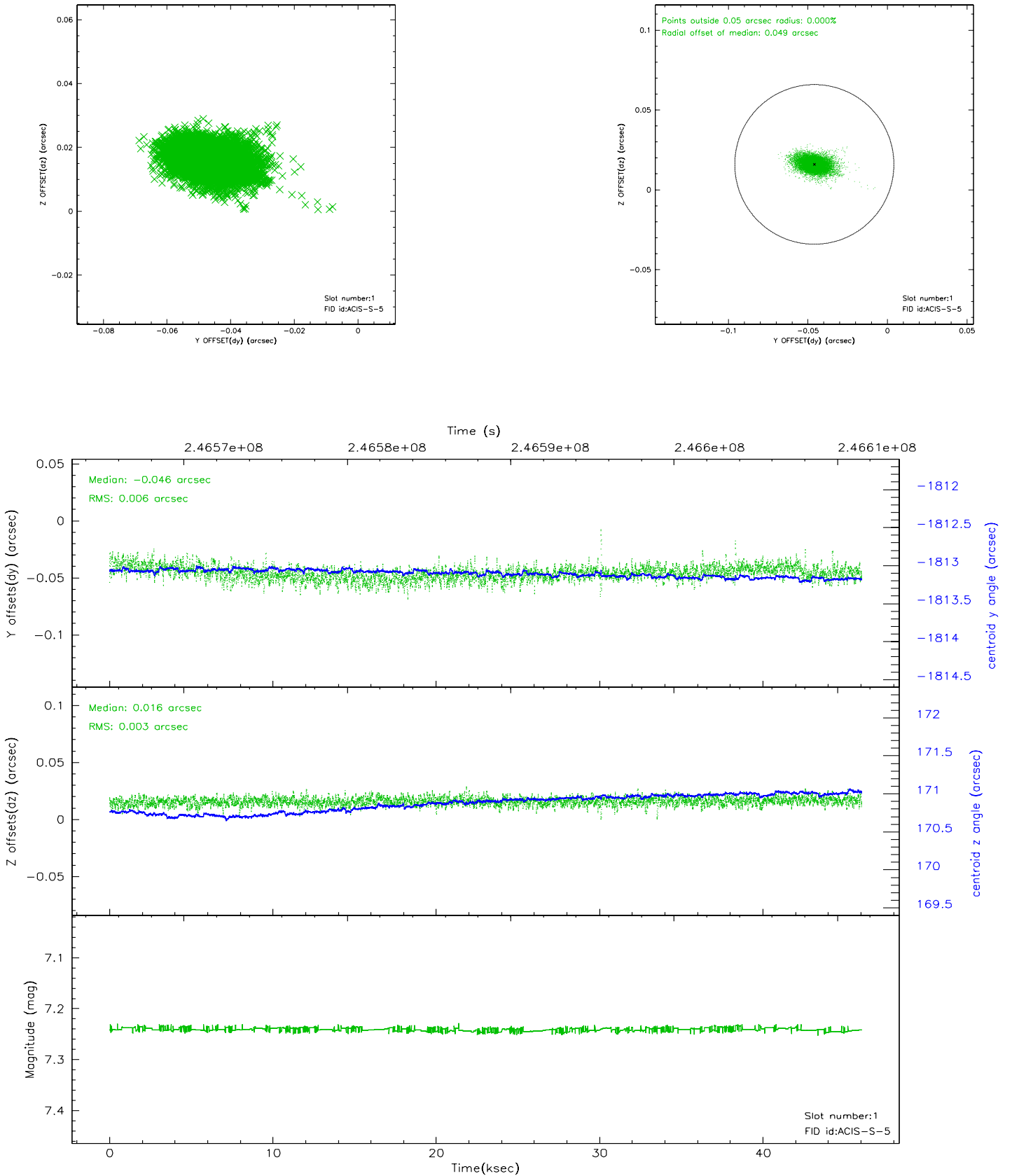


2.5 FID Slots

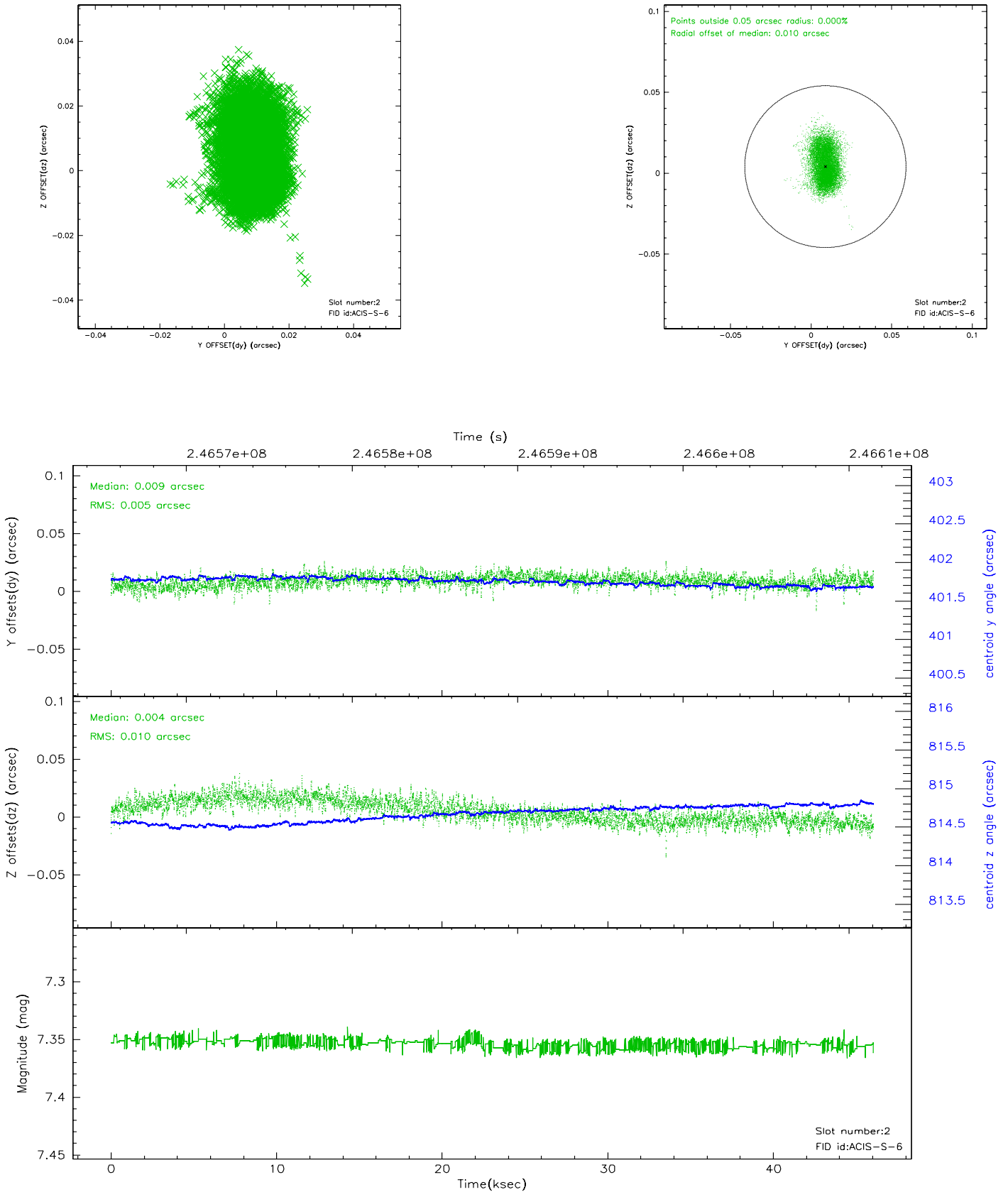
2.5.1 Slot 0



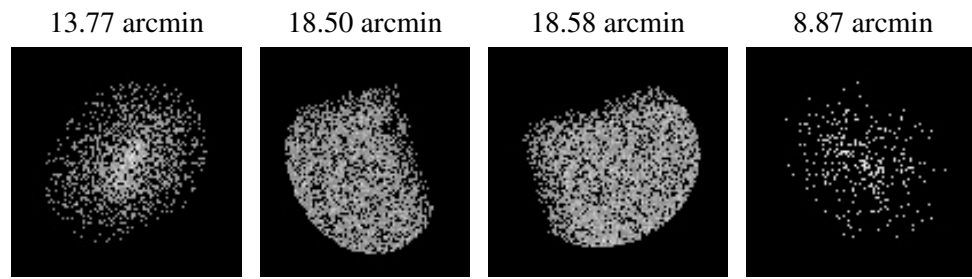
2.5.2 Slot 1



2.5.3 Slot 2



3 Point Sources



A Summary

A.1 Status

V&V Scientist	Jen Lauer
V&V Date (YYYY-MM-DD)	2006.04.03
V&V Edition	1
V&V Disposition and Status	OK
V&V Charge Time	45.03679

A.2 Comments

Group preference met.