

V&V Reference Report

L2 ASCDS Version : 8.4.4

Observation 57201 - L2 Version 2
Chandra X-Ray Center

L2 Processing Date : Jun 3 2012

Contents

1	Front	2
2	OBI	3
2.1	OBI	3
2.1.1	Images	3
2.1.2	Bias	3
2.1.3	Parameters	4
2.1.4	Events	4
2.2	Compared Parameters	5
2.3	Star Slots	6
2.4	FID Slots	6
A	Summary	7
A.1	Status	7
A.2	Comments	7

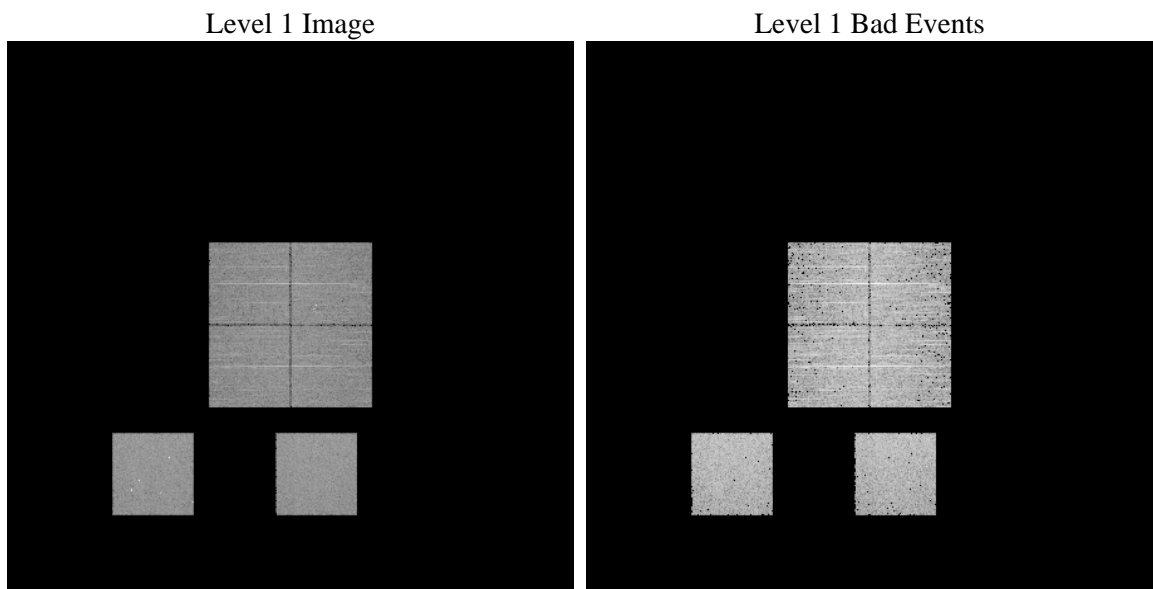
1 Front

seq_num	 	Sequence number
obs_id	57201	Observation id
title	ACIS-012357 diagnostics	Proposal title
observer	CHANDRA engineering request/realtime commanding	Principal investig
object	 	Source name
dtcycle	0	
cycle	P	events from which exps? Prim/Second/Both
ra_targ	0.0	Observer's specified target RA [deg]
dec_targ	0.0	Observer's specified target Dec [deg]
ra_nom	205.0140142595	Nominal RA [deg]
dec_nom	-25.972192650366	Nominal Dec [deg]
roll_nom	33.952539471752	Nominal Roll [deg]
revision	2	Processing version of data
ontime	3272.8373158574	Sum of GTIs [s]
livetime	3231.394679098	Livetime [s]
ontime0	3272.7962758541	Sum of GTIs [s]
ontime1	3272.7552358508	Sum of GTIs [s]
ontime2	3272.7141958475	Sum of GTIs [s]
ontime3	3272.8783558607	Sum of GTIs [s]
ontime5	3272.6731558442	Sum of GTIs [s]
ontime7	3272.8373158574	Sum of GTIs [s]
l2events	211932	Number of level 2 events

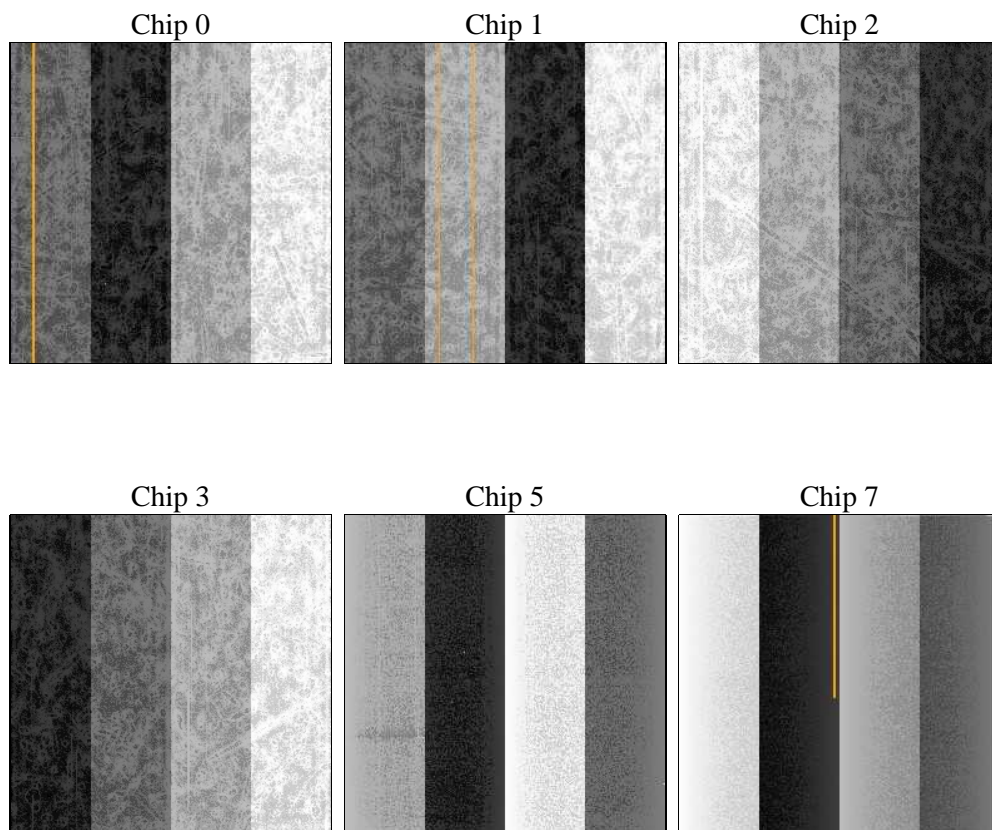
2 OBI

2.1 OBI

2.1.1 Images



2.1.2 Bias



2.1.3 Parameters

obi_num	0	Obi number	sched_exp_time	0.0	[s] Scheduled observation exposure time
ascdsver	8.4.4	Processing system revision	ontime	3272.8373158574	Sum of GTIs [s]
caldbver	4.4.9	 	ontime0	3272.7962758541	Sum of GTIs [s]
date	2012-06-03T11:25:21	Date and time of file creation	ontime1	3272.7552358508	Sum of GTIs [s]
revision	2	Processing version of data	ontime2	3272.7141958475	Sum of GTIs [s]
			ontime3	3272.8783558607	Sum of GTIs [s]
			ontime5	3272.6731558442	Sum of GTIs [s]
			ontime7	3272.8373158574	Sum of GTIs [s]
			l1events	403833	Number of level 1 events

2.1.4 Events

	ccd 0	ccd 1	ccd 2	ccd 3	ccd 5	ccd 7		ccd 0	ccd 1	ccd 2	ccd 3	ccd 5	ccd 7
level 1 events	60722	61599	64421	62896	77828	76367	grade 0 events	17086	16763	17272	17564	8674	9140
rejected events	28968	28749	32624	30672	29257	28531		28%	27%	26%	27%	11%	11%
rejected %	47%	46%	50%	48%	37%	37%	grade 1 events	141	126	144	161	110	76
								0%	0%	0%	0%	0%	0%
							grade 2 events	5715	6738	5506	5565	16699	10364
								9%	10%	8%	8%	21%	13%
							grade 3 events	2181	2119	2183	2219	2191	4494
								3%	3%	3%	3%	2%	5%
							grade 4 events	2069	2150	2175	2187	2171	4424
								3%	3%	3%	3%	2%	5%
							grade 5 events	1703	1797	1629	1831	3905	4714
								2%	2%	2%	2%	5%	6%
							grade 6 events	4703	5080	4661	4689	18836	19414
								7%	8%	7%	7%	24%	25%
							grade 7 events	27124	26826	30851	28680	25242	23741
								44%	43%	47%	45%	32%	31%

2.2 Compared Parameters

Parameter	Planned	Actual	Parameter	Planned	Actual
Instrument	ACIS	ACIS	Obspar format version number	7	7
Detector	ACIS-012357	ACIS-012357	Obspar file type	PREDICTED	ACTUAL
Grating	NONE	NONE	Obspar update status	NONE	UPDATED
Data mode	FAINT	FAINT	Number of optional ACIS chips dropped	0	0
Observation mode	SECONDARY	SECONDARY	On-chip summing requested	N	N
[deg] Pointing RA	0	205.0140142595005	Subarray requested	NONE	NONE
[deg] Pointing Dec	0	-25.97219265036641	Alternating exposures requested	N	N
[deg] Pointing Roll	0.0	33.95253947175164	[s] Primary exposure time	3.2	3.2
[mm] SIM focus pos	-1.429586	-0.6828225247311905			
[mm] SIM defocus	0.1037507710433287	0.8505141146731063			
[mm] SIM translation stage pos	250.455976	250.466033080201			
[mm] SIM translation stage offset	0	-0.01005468664627074			
[s] Observation start time (MET)	355031485.863293	355031484.83828			
Observation start date	2009-04-02T03:51:26	2009-04-02T03:51:24			
[s] Observation end time (MET)	355051303.214279	355051302.18927			
Observation end date	2009-04-02T09:21:43	2009-04-02T09:21:42			
Read mode	TIMED	TIMED			

2.3 Star Slots

2.4 FID Slots

A Summary

A.1 Status

V&V Scientist	Joy Nichols
V&V Date (YYYY-MM-DD)	2012.06.07
V&V Edition	1
V&V Disposition and Status	OK
V&V Charge Time	3.2728373158574

A.2 Comments