

V&V Reference Report

L2 ASCDS Version : 7.6.7.1

Observation 5681 - L2 Version 002
Chandra X-Ray Center

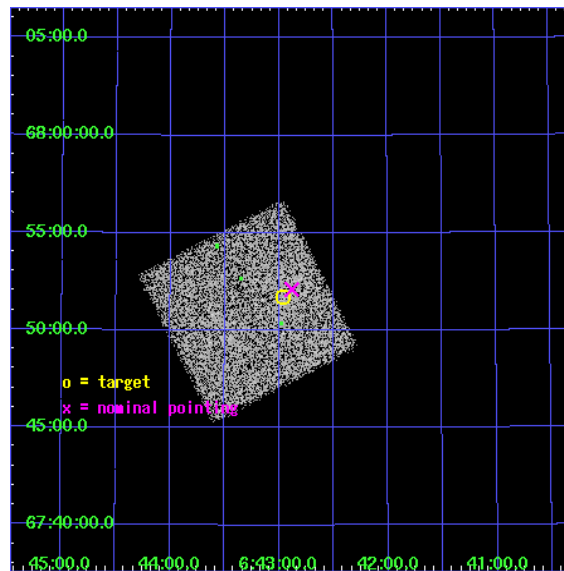
L2 Processing Date : Apr 8 2006

Contents

1	Front	2
2	OBI	3
2.1	OBI	3
2.1.1	Images	3
2.1.2	Bias	3
2.1.3	Parameters	4
2.1.4	Events	4
2.2	Compared Parameters	5
2.3	Aspect	6
2.4	Star Slots	9
2.4.1	Slot 3	9
2.4.2	Slot 4	10
2.4.3	Slot 5	11
2.4.4	Slot 6	12
2.4.5	Slot 7	13
2.5	FID Slots	14
2.5.1	Slot 0	14
2.5.2	Slot 1	15
2.5.3	Slot 2	16
3	Point Sources	17
A	Summary	18
A.1	Status	18
A.2	Comments	18

1 Front

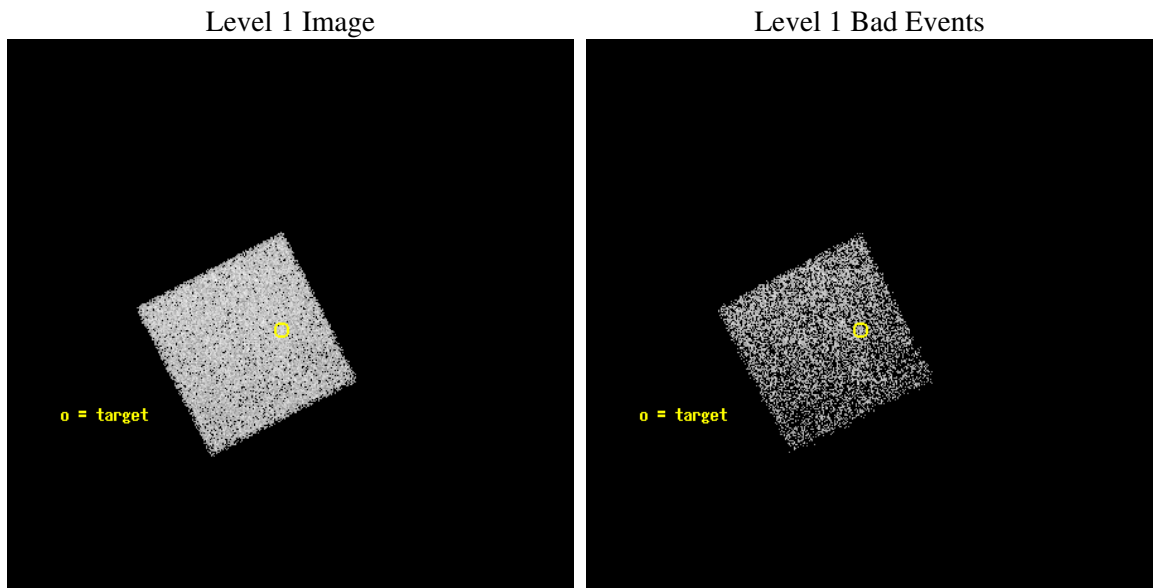
seq_num	701104
obs_id	5681
title	Bringing in the Last SHEEP
observer	Professor Kirpal Nandra
object	AX J0642.9+6751
dtcycle	0
cycle	P
ra_targ	100.740833
dec_targ	67.8625
ra_nom	100.72039181187
dec_nom	67.868387895745
roll_nom	152.8177365028
revision	2
ontime	5164.7999807596
livetime	5099.4001735341
ontime7	5164.7999807596
l2events	19397



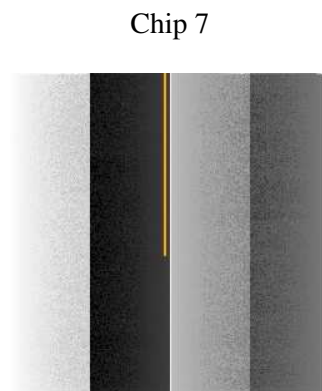
2 OBI

2.1 OBI

2.1.1 Images



2.1.2 Bias



2.1.3 Parameters

obi_num	0
ascdsver	7.6.7.1
caldbver	3.2.1
date	2006-04-08T18:09:03
revision	2

sched_exp_time	5000.000000
ontime	5798.1531710327
ontime7	5798.1531710327
l1events	57382

2.1.4 Events

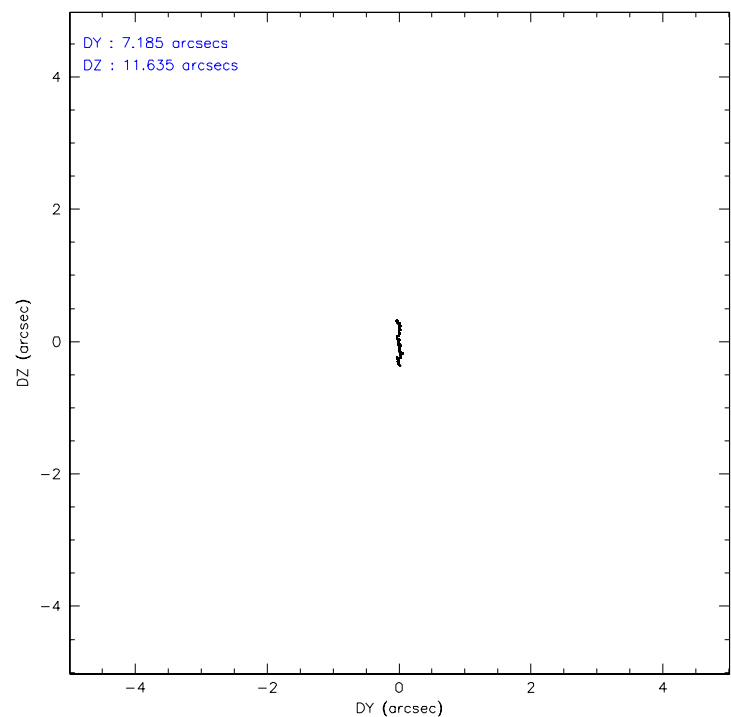
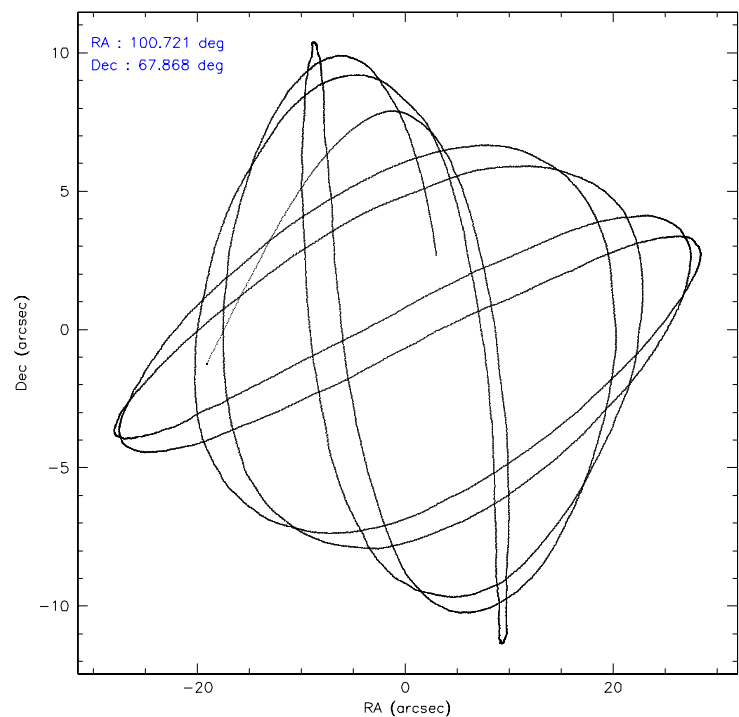
	ccd 7
level 1 events	57382
rejected events	37458
rejected %	65%

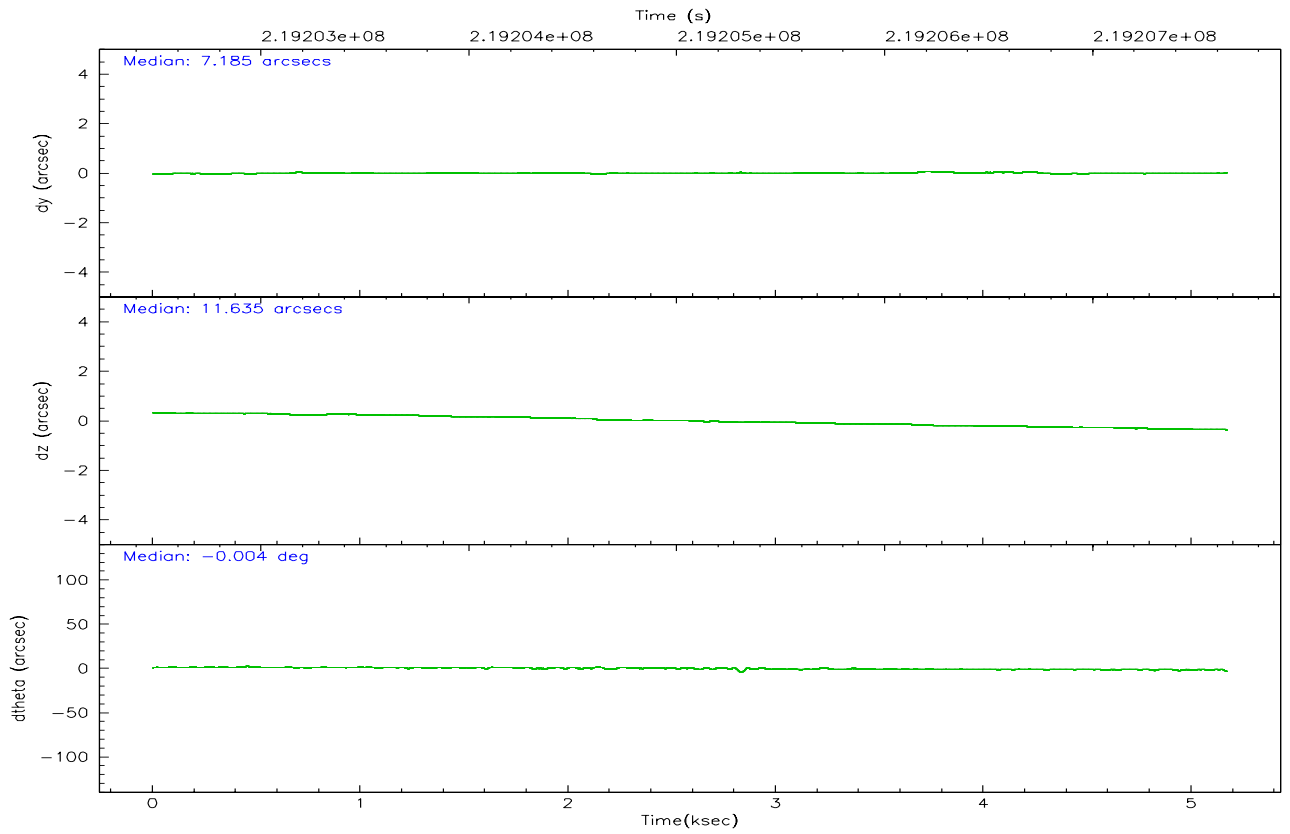
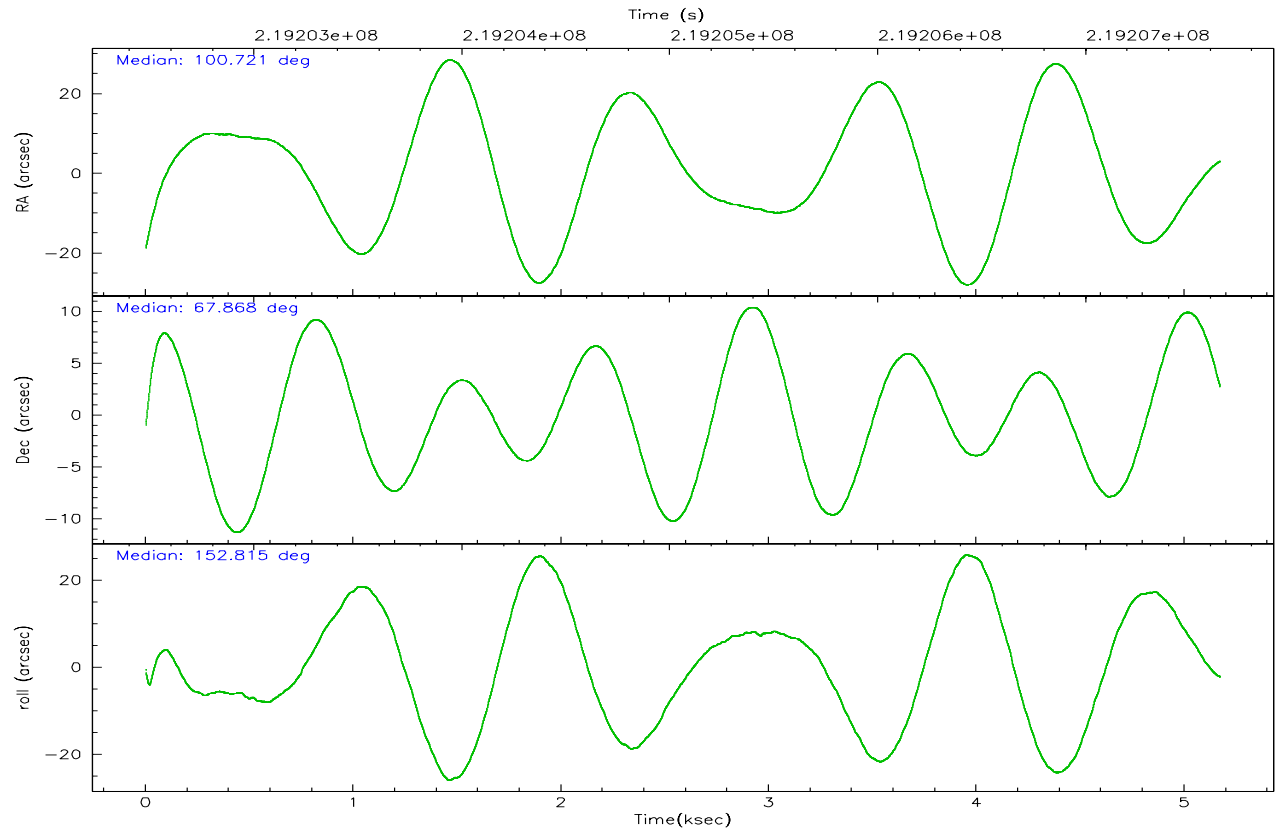
	ccd 7
grade 0 events	1245
	2%
grade 1 events	39
	0%
grade 2 events	5684
	9%
grade 3 events	1049
	1%
grade 4 events	1025
	1%
grade 5 events	3600
	6%
grade 6 events	13358
	23%
grade 7 events	31382
	54%

2.2 Compared Parameters

Parameter	Planned	Actual	Parameter	Planned	Actual
Instrument	ACIS	ACIS	Obspar format version number	6	6
Detector	ACIS-7	ACIS-7	Obspar file type	PREDICTED	ACTUAL
Grating	NONE	NONE	Obspar update status	NONE	UPDATED
Data mode	FAINT	FAINT	On-chip summing requested	N	N
Observation mode	POINTING	POINTING	Subarray requested	NONE	NONE
Pointing RA	100.792571	100.7203918118655	Alternating exposures requested	N	N
Pointing Dec	67.870039	67.86838789574544	Primary exposure time	0.000000	3.2
Pointing Roll	152.594300	152.8177365027989			
SIM focus pos (mm)	-0.684267	-0.6828225247311905			
SIM defocus (mm)	0	0.001444936568705701			
SIM translation stage pos (mm)	-190.132523	-190.1425803651734			
SIM translation stage offset (mm)	0	0.01005778216563158			
Observation start time	219202655.184000	219201598.20939			
Observation start date	2004-12-12T01:36:31	2004-12-12T01:19:58			
Observation end time	219207655.184000	219208304.27219			
Observation end date	2004-12-12T02:59:51	2004-12-12T03:11:44			
Read mode	TIMED	TIMED			

2.3 Aspect





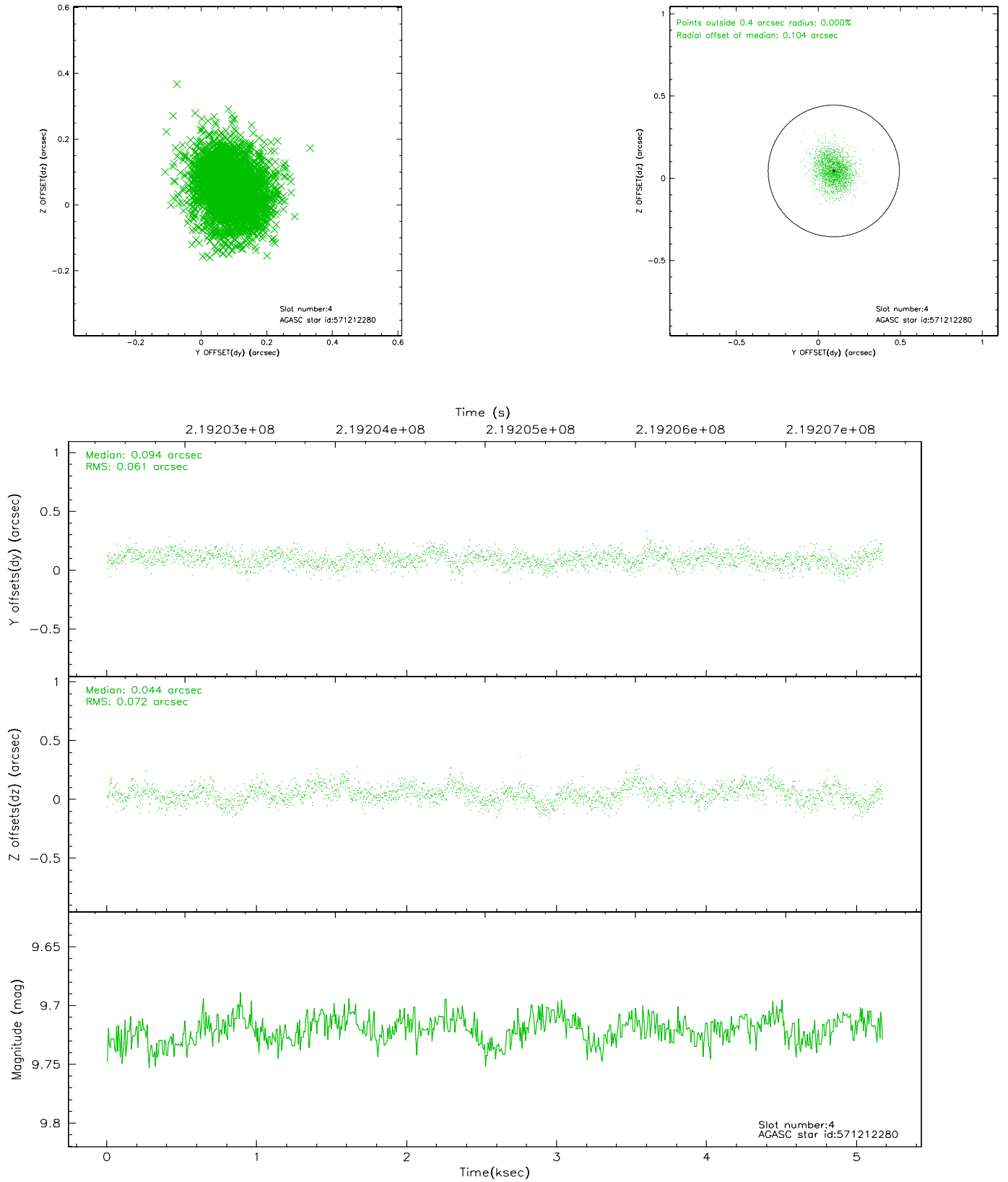
Slot Statistics

slot	status	id	mag	n_pts	med_dy	med_dz	dr1	dr2	ra	dec	mean_y	mean_z
0	FID	ACIS-S-2	7.10	1262	-0.017	0.009	0.010	0.015	0.000000	0.000000	-759.94	-1732.87
1	FID	ACIS-S-4	7.20	1262	0.024	0.006	0.008	0.014	0.000000	0.000000	2152.83	174.42
2	FID	ACIS-S-5	7.23	1262	-0.038	-0.006	0.008	0.014	0.000000	0.000000	-1811.32	169.38
3	GUIDE	538578080	9.25	2523	0.043	-0.113	0.095	0.149	101.515378	67.229379	-1952.88	1578.98
4	GUIDE	571212280	9.72	2522	0.094	0.044	0.101	0.164	101.333296	67.994545	-440.27	-735.54
5	GUIDE	571212352	8.71	2522	-0.082	-0.085	0.065	0.104	99.290653	67.919405	1897.23	755.78
6	GUIDE	571346168	7.67	2524	-0.095	0.081	0.067	0.109	102.775701	68.218144	-1754.29	-2368.94
7	GUIDE	571213664	9.89	2518	0.039	0.080	0.129	0.209	99.823955	68.602102	2346.66	-1763.49

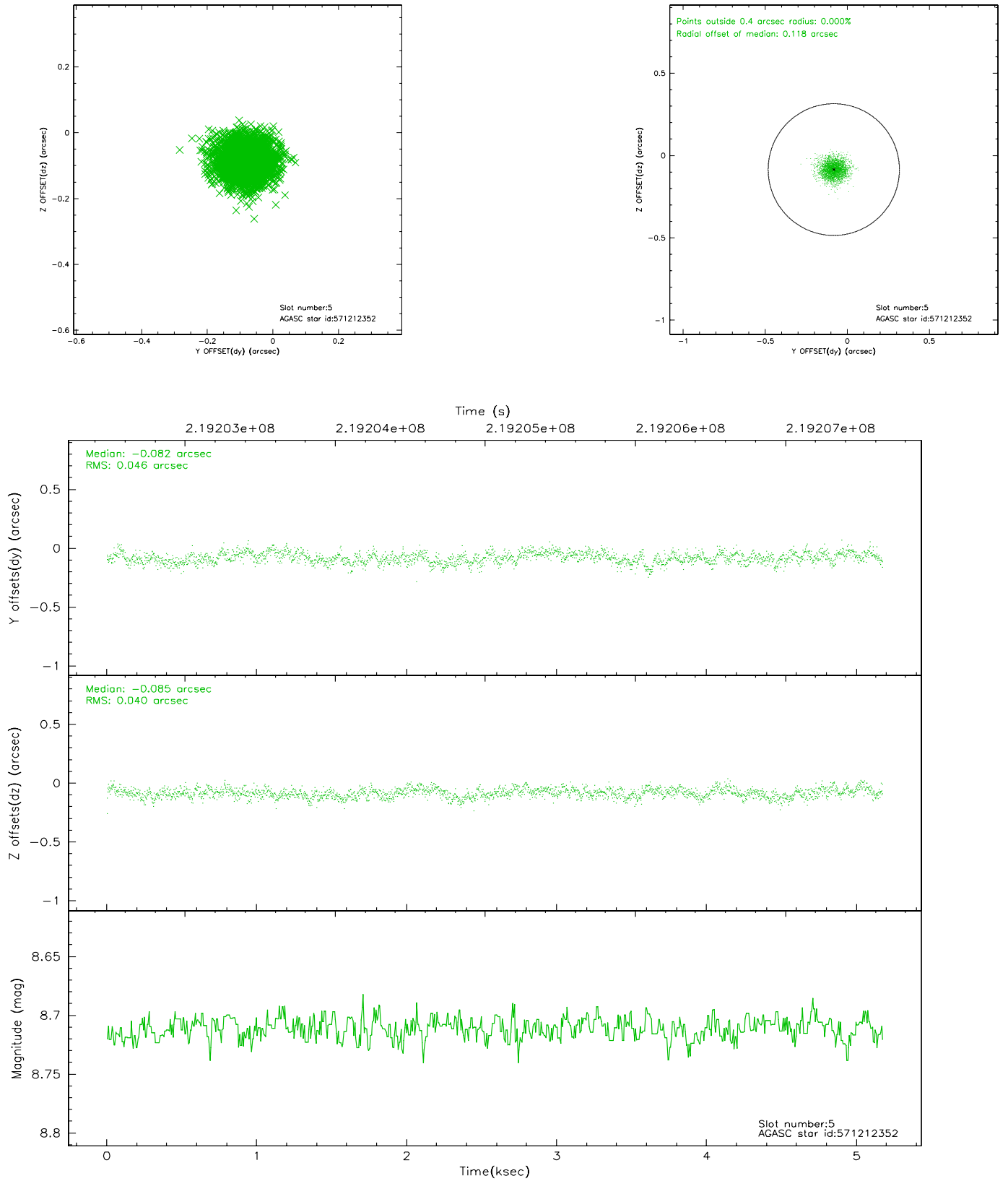
2.4.1 Slot 3



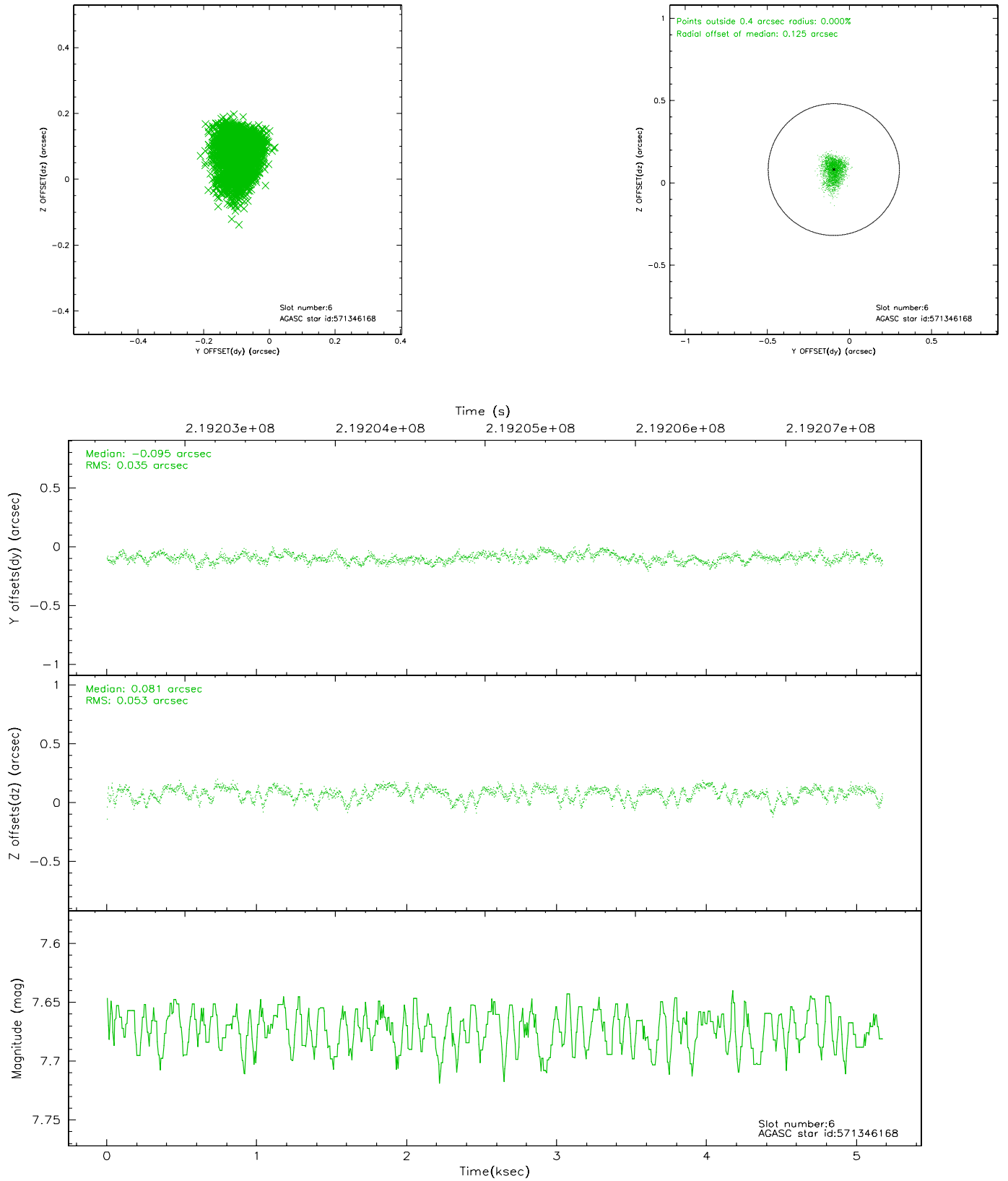
2.4.2 Slot 4



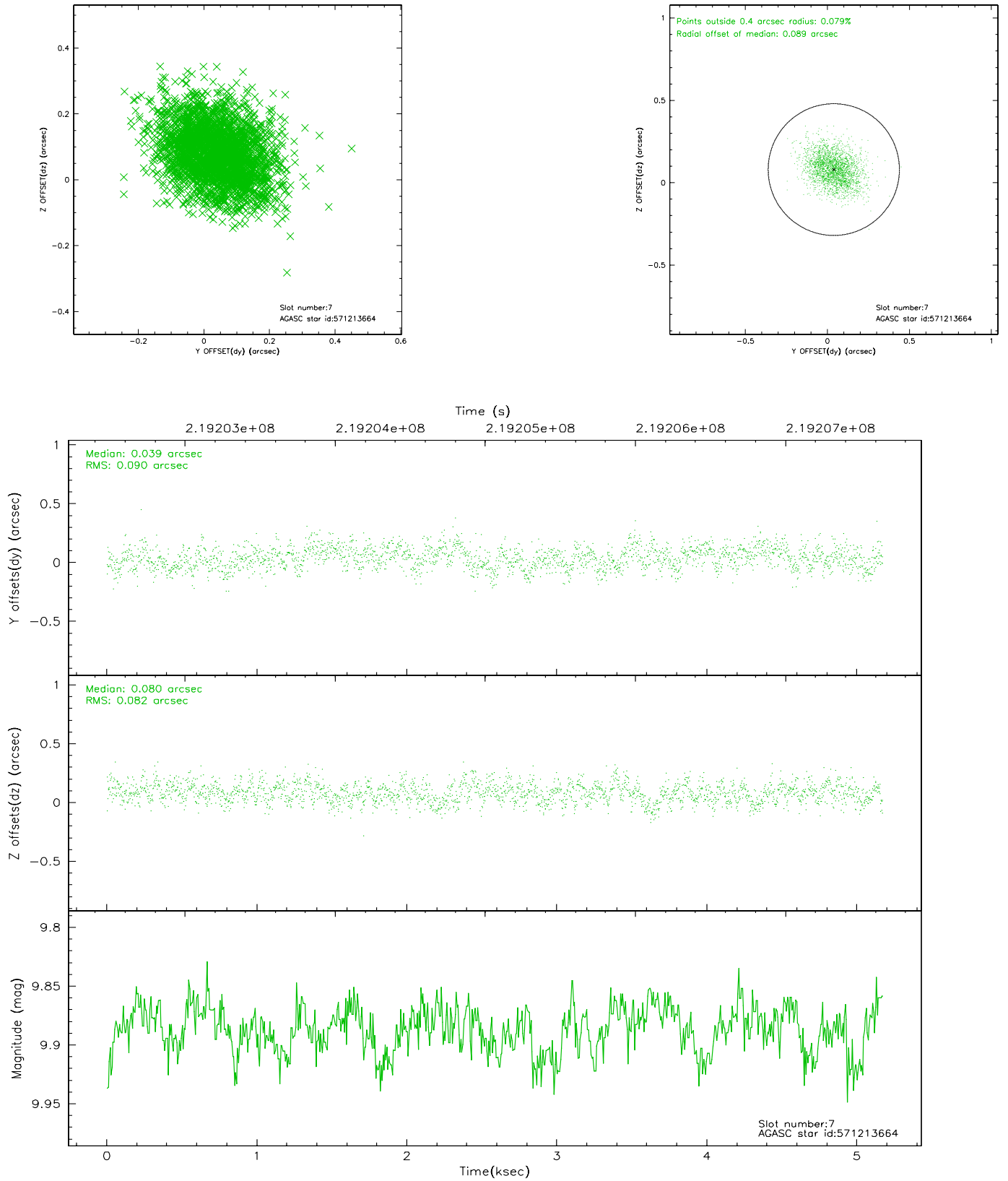
2.4.3 Slot 5



2.4.4 Slot 6

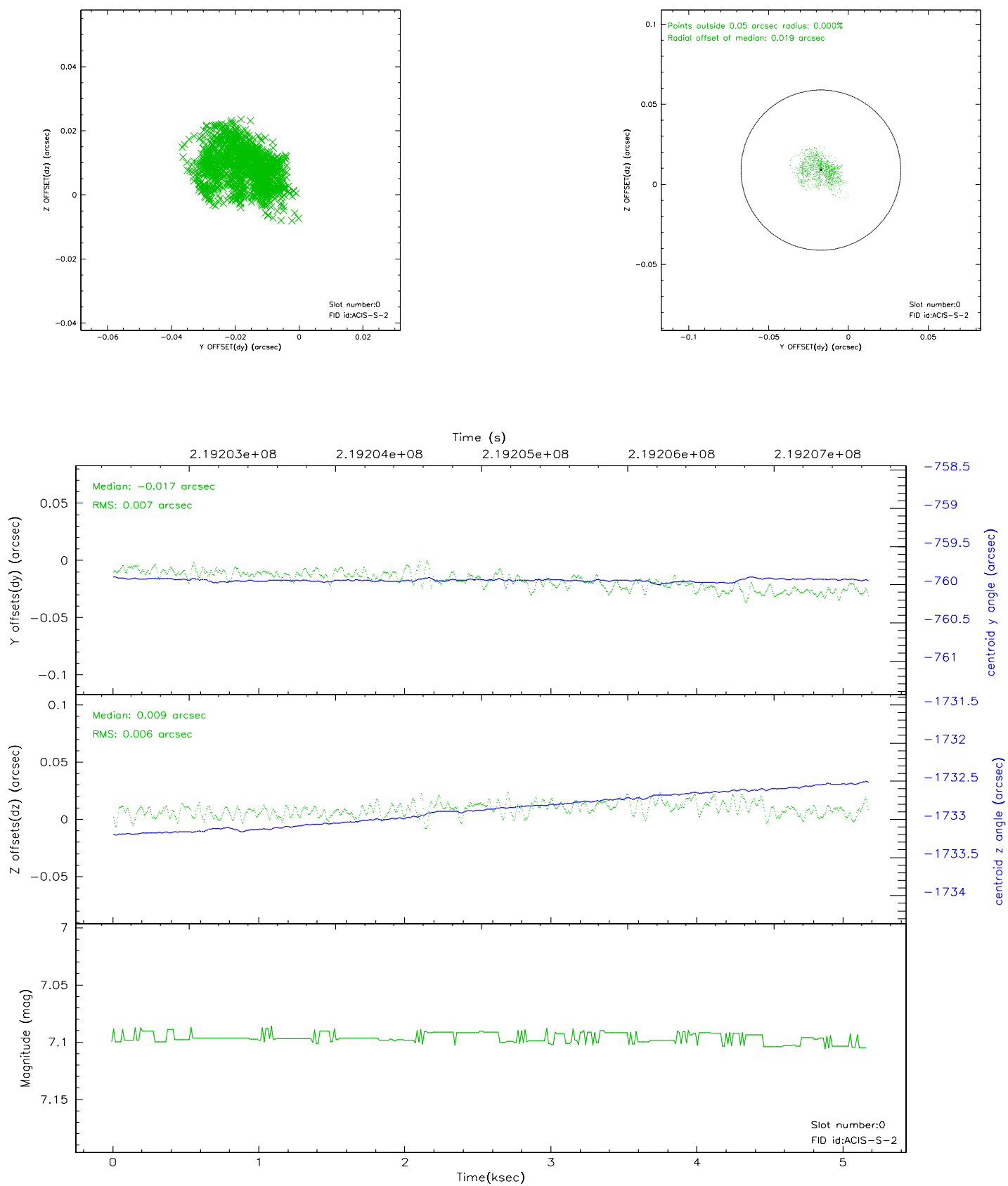


2.4.5 Slot 7

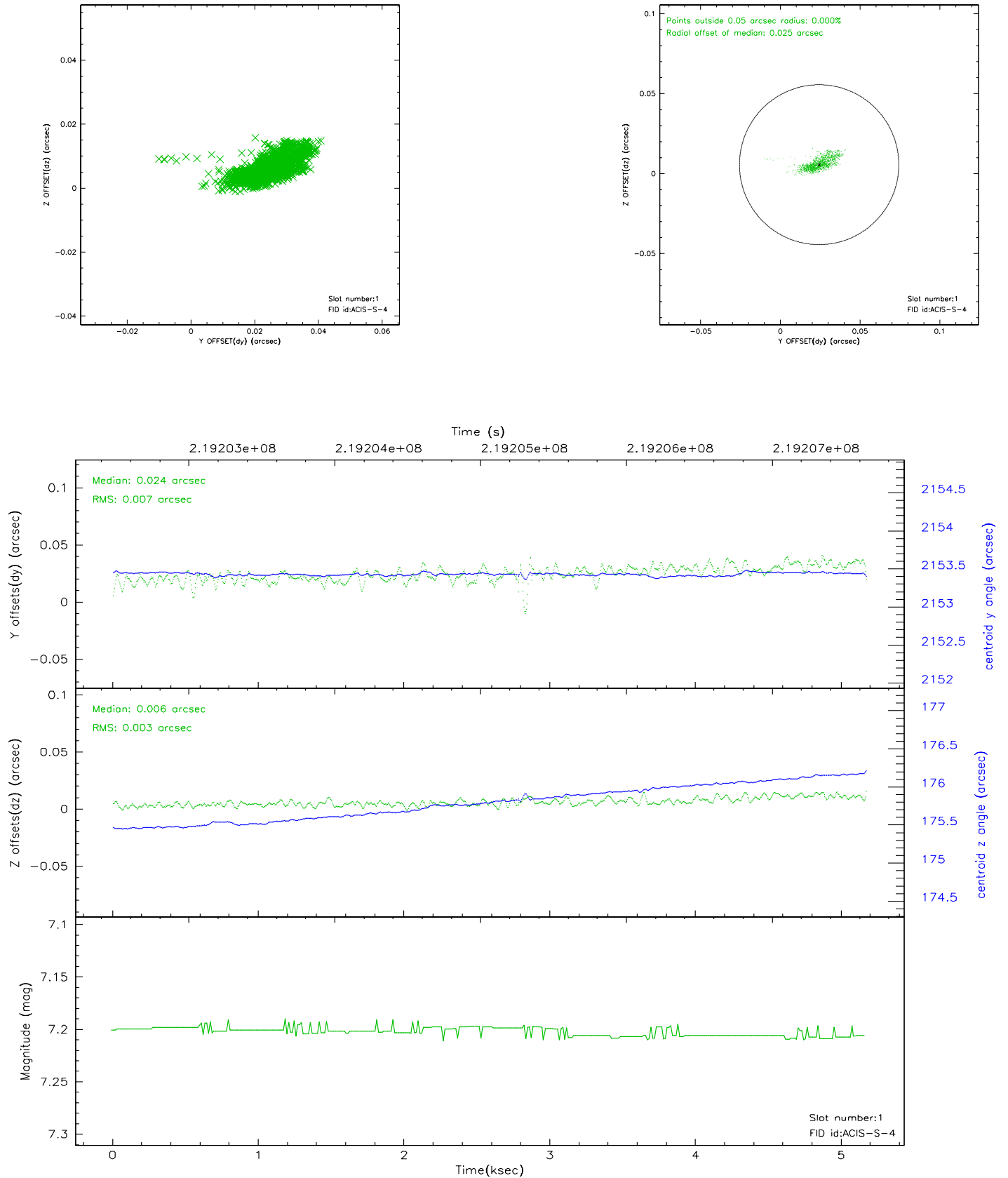


2.5 FID Slots

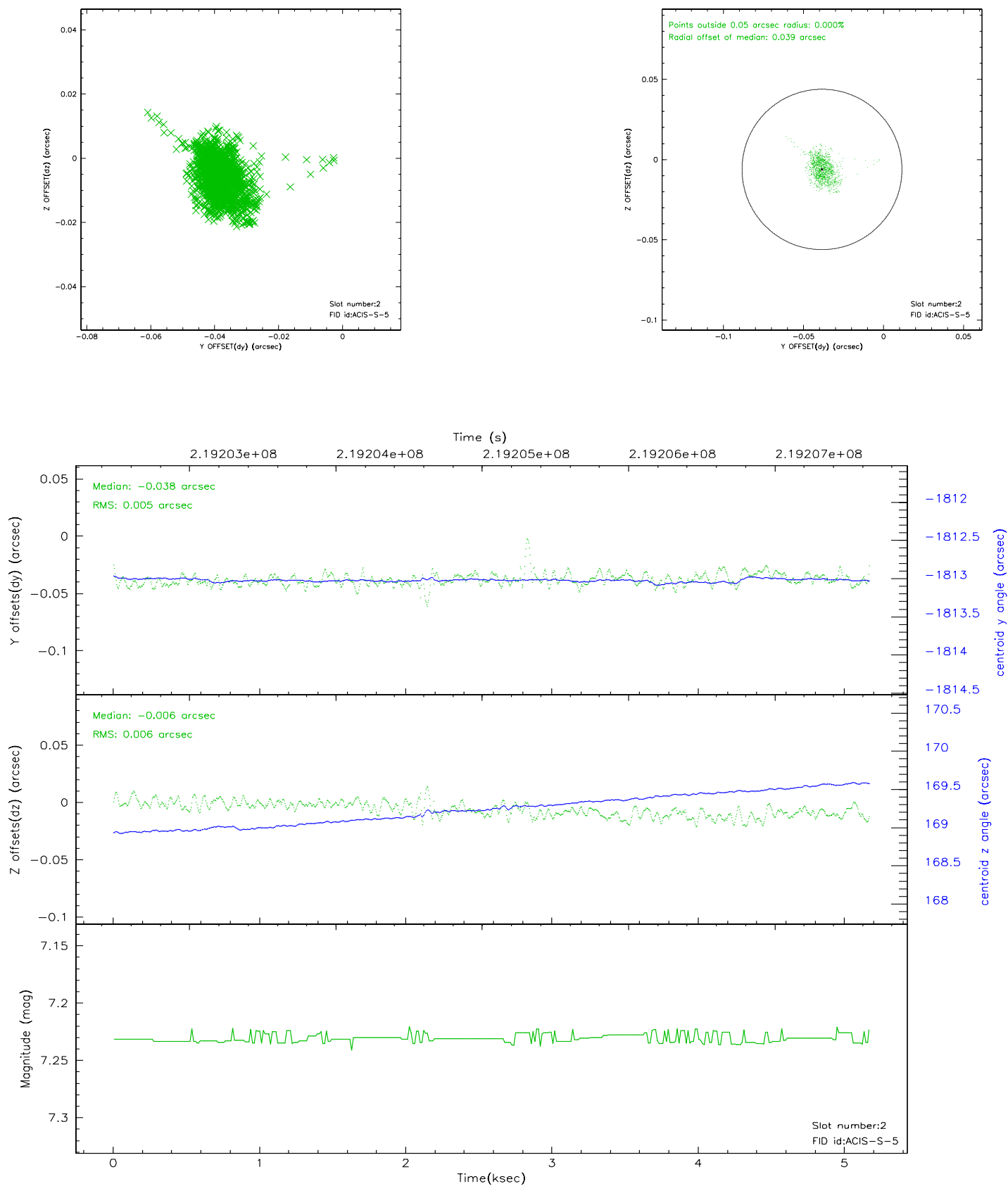
2.5.1 Slot 0



2.5.2 Slot 1



2.5.3 Slot 2



3 Point Sources

4.44 arcmin



A Summary

A.1 Status

V&V Scientist	Jen Lauer
V&V Date (YYYY-MM-DD)	2006.04.10
V&V Edition	1
V&V Disposition and Status	OK
V&V Charge Time	5.164799

A.2 Comments