

# V&V Reference Report

## L2 ASCDS Version : 8.5

Observation 5631 - L2 Version 3  
Chandra X-Ray Center

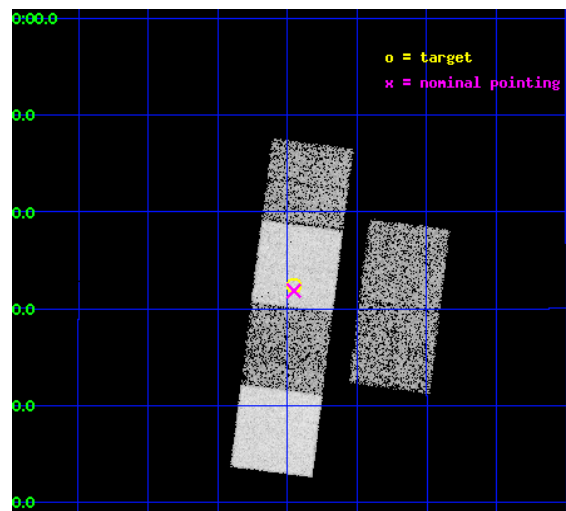
L2 Processing Date : Dec 10 2012

## Contents

<b>1</b>	<b>Front</b>	<b>2</b>
<b>2</b>	<b>OBI</b>	<b>3</b>
2.1	OBI . . . . .	3
2.1.1	Images . . . . .	3
2.1.2	Bias . . . . .	3
2.1.3	Parameters . . . . .	4
2.1.4	Events . . . . .	4
2.2	Compared Parameters . . . . .	5
2.3	Aspect . . . . .	6
2.4	Star Slots . . . . .	9
2.4.1	Slot 3 . . . . .	9
2.4.2	Slot 4 . . . . .	10
2.4.3	Slot 5 . . . . .	11
2.4.4	Slot 6 . . . . .	12
2.4.5	Slot 7 . . . . .	13
2.5	FID Slots . . . . .	14
2.5.1	Slot 0 . . . . .	14
2.5.2	Slot 1 . . . . .	15
2.5.3	Slot 2 . . . . .	16
<b>A</b>	<b>Summary</b>	<b>17</b>
A.1	Status . . . . .	17
A.2	Comments . . . . .	17

# 1 Front

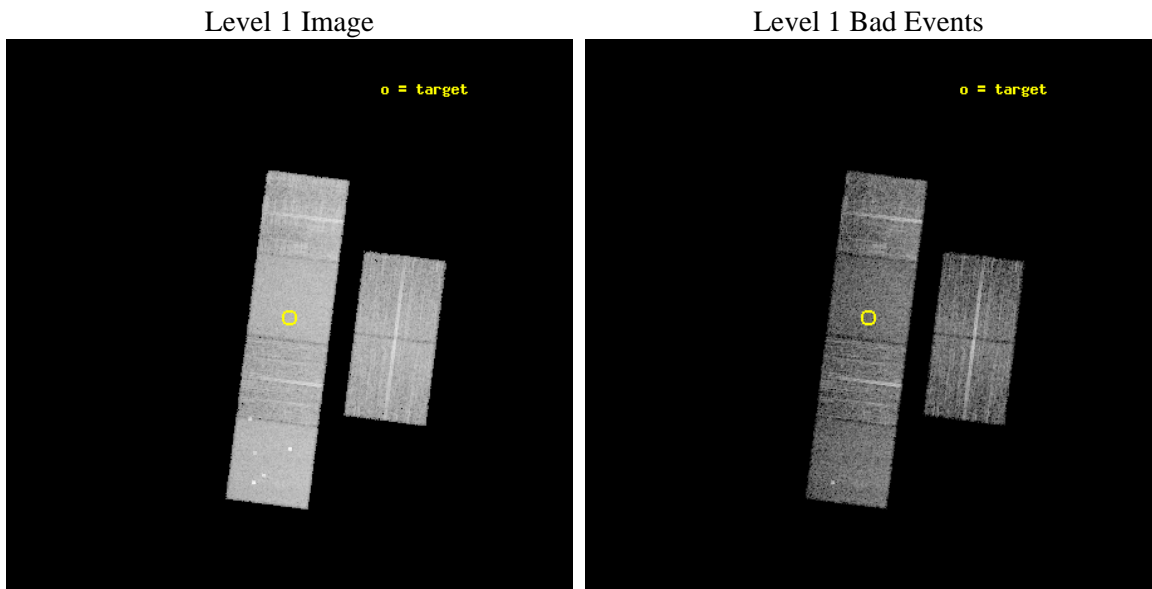
seq_num	701054	Sequence number
obs_id	5631	Observation id
title	THE X-RAY PROPERTIES OF HIGHER REDSHIFT RED AGN	Proposal title
observer	Dr. Belinda Wilkes	Principal investigator
object	2MASS 015727+133226	Source name
dtcycle	0	&#160
cycle	P	events from which exps? Prim/Second/Both
ra_targ	29.36375	Observer's specified target RA [deg]
dec_targ	13.54075	Observer's specified target Dec [deg]
ra_nom	29.363250045917	Nominal RA [deg]
dec_nom	13.53102920864	Nominal Dec [deg]
roll_nom	277.22432746366	Nominal Roll [deg]
revision	3	Processing version of data
ontime	7177.5999732614	Sum of GTIs [s]
livetime	7086.7128805681	Livetime [s]
ontime2	7177.5999732614	Sum of GTIs [s]
ontime3	7177.5999732614	Sum of GTIs [s]
ontime5	7177.5999732614	Sum of GTIs [s]
ontime6	7177.5999732614	Sum of GTIs [s]
ontime7	7177.5999732614	Sum of GTIs [s]
ontime8	7174.359102428	Sum of GTIs [s]
l2events	91127	Number of level 2 events



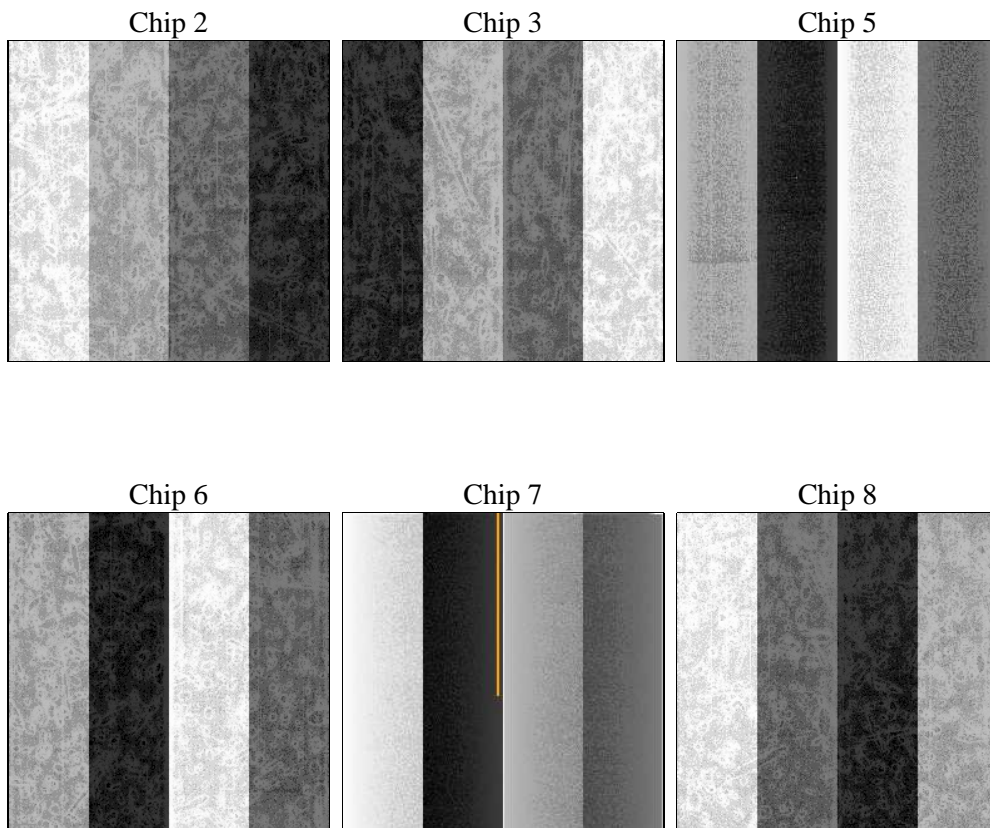
## 2 OBI

### 2.1 OBI

#### 2.1.1 Images



#### 2.1.2 Bias



### 2.1.3 Parameters

obi_num	0	Obi number	sched_exp_time	7000.000000	[s] Scheduled observation exposure time
ascdsver	8.5	Processing system revision	ontime	7177.5999732614	Sum of GTIs [s]
caldbver	4.5.4	&#160	ontime2	7177.5999732614	Sum of GTIs [s]
date	2012-12-10T22:42:07	Date and time of file creation	ontime3	7177.5999732614	Sum of GTIs [s]
revision	3	Processing version of data	ontime5	7177.5999732614	Sum of GTIs [s]
			ontime6	7177.5999732614	Sum of GTIs [s]
			ontime7	7177.5999732614	Sum of GTIs [s]
			ontime8	7174.359102428	Sum of GTIs [s]
			l1events	420886	Number of level 1 events

### 2.1.4 Events

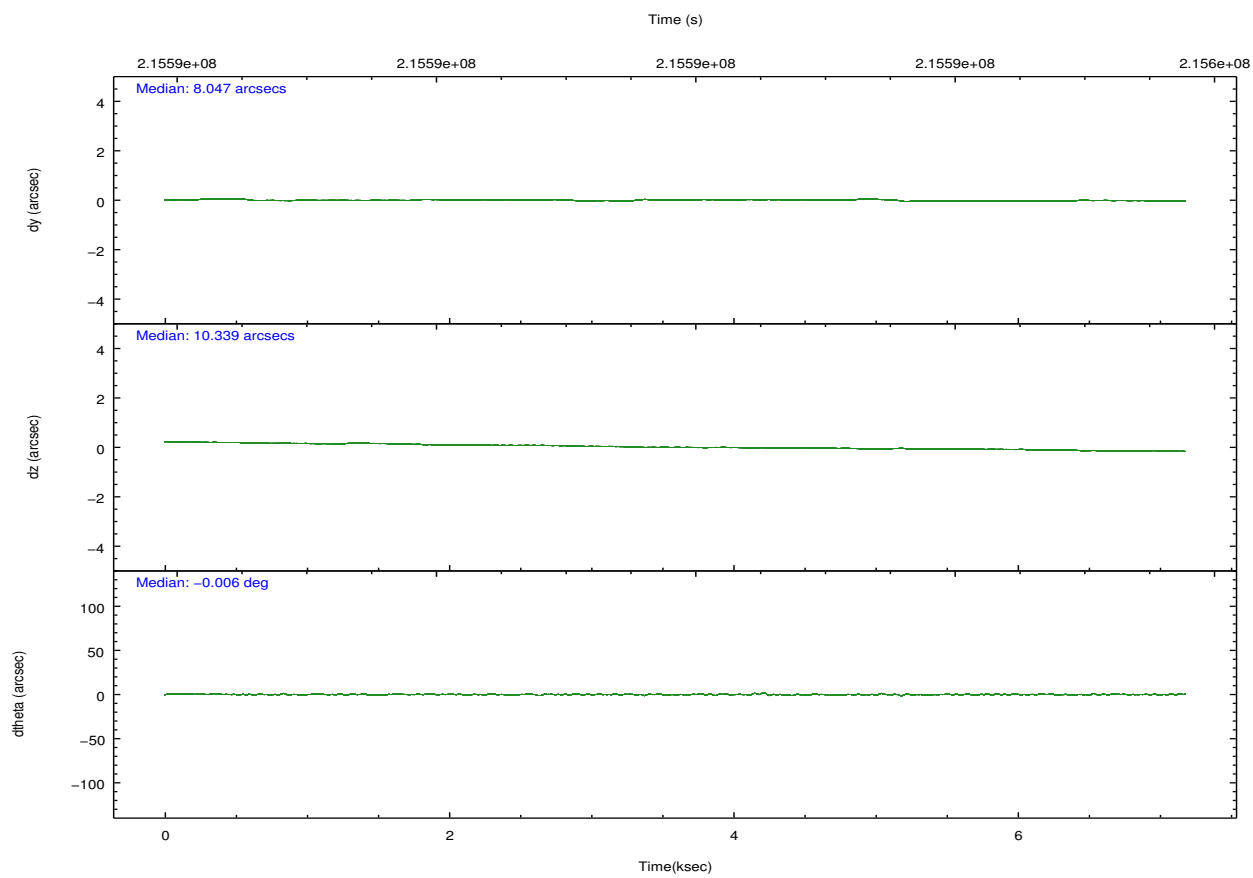
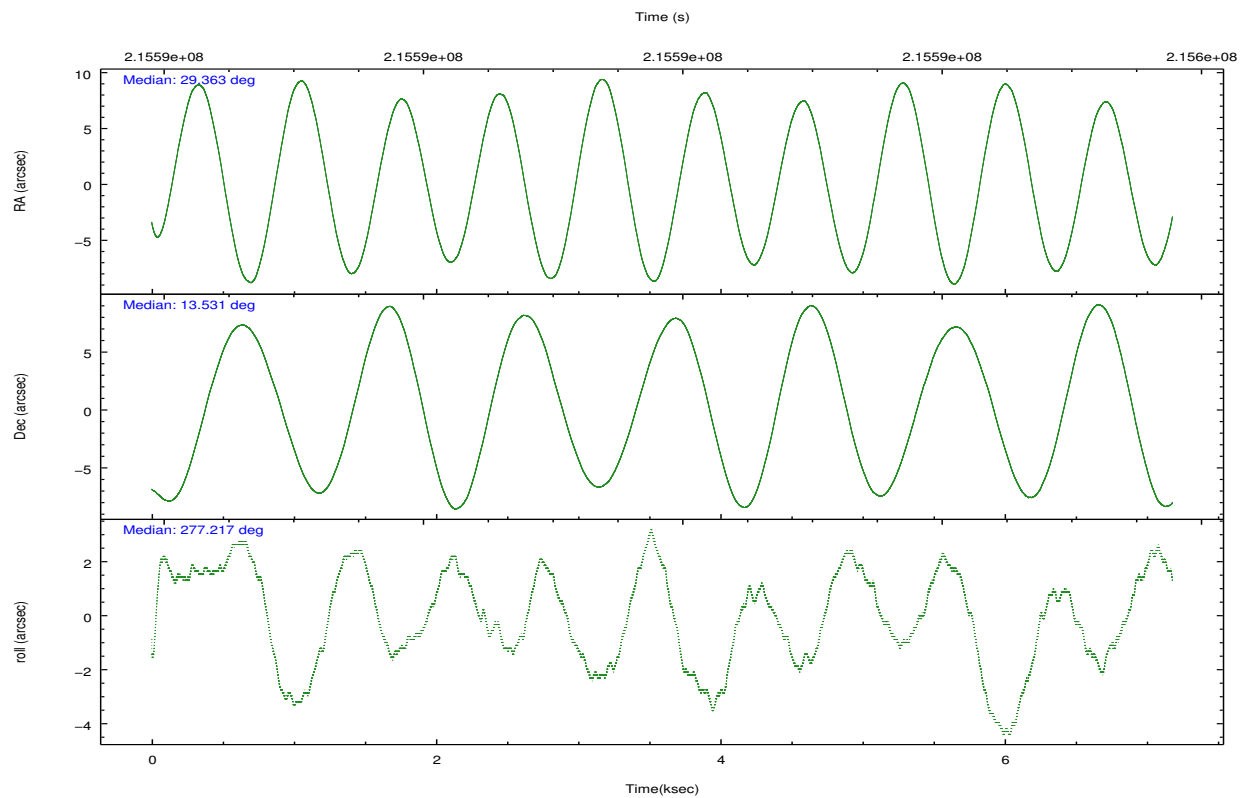
	ccd 2	ccd 3	ccd 5	ccd 6	ccd 7	ccd 8		ccd 2	ccd 3	ccd 5	ccd 6	ccd 7	ccd 8
level 1 events	60555	56288	88430	60608	77873	77132	grade 0 events	3123	2952	4892	2814	2904	5637
rejected events	53650	49668	48798	53740	46462	60001		5%	5%	5%	4%	3%	7%
rejected %	88%	88%	55%	88%	59%	77%	grade 1 events	31	27	146	24	88	42
								0%	0%	0%	0%	0%	0%
							grade 2 events	1480	1326	12010	1563	6366	3745
								2%	2%	13%	2%	8%	4%
							grade 3 events	623	664	1458	669	2817	2072
								1%	1%	1%	1%	3%	2%
							grade 4 events	673	676	1443	614	2820	1814
								1%	1%	1%	1%	3%	2%
							grade 5 events	2272	2517	6319	2729	7465	3359
								3%	4%	7%	4%	9%	4%
							grade 6 events	1168	1180	21004	1411	17408	4352
								1%	2%	23%	2%	22%	5%
							grade 7 events	51185	46946	41158	50784	38005	56111
								84%	83%	46%	83%	48%	72%



## 2.2 Compared Parameters

Parameter	Planned	Actual	Parameter	Planned	Actual
Instrument	ACIS	ACIS	Obspar format version number	7	7
Detector	ACIS-235678	ACIS-235678	Obspar file type	PREDICTED	ACTUAL
Grating	NONE	NONE	Obspar update status	NONE	UPDATED
Data mode	FAINT	FAINT	Number of optional ACIS chips dropped	0	0
Observation mode	POINTING	POINTING	On-chip summing requested	N	N
[deg] Pointing RA	29.346002	29.36325004591701	Subarray requested	NONE	NONE
[deg] Pointing Dec	13.552551	13.53102920864044	Alternating exposures requested	N	N
[deg] Pointing Roll	277.071739	277.2243274636614	[s] Primary exposure time	0.000000	3.2
[mm] SIM focus pos	-0.684267	-0.6828225247311905			
[mm] SIM defocus	0	0.001444936568705701			
[mm] SIM translation stage pos	-190.132523	-190.1425803651734			
[mm] SIM translation stage offset	0	0.01005778216563158			
[s] Observation start time (MET)	215588432.184000	215587257.39711			
Observation start date	2004-10-31T05:39:28	2004-10-31T05:20:57			
[s] Observation end time (MET)	215595432.184000	215596557.73503			
Observation end date	2004-10-31T07:36:08	2004-10-31T07:55:57			
Read mode	TIMED	TIMED			

## 2.3 Aspect

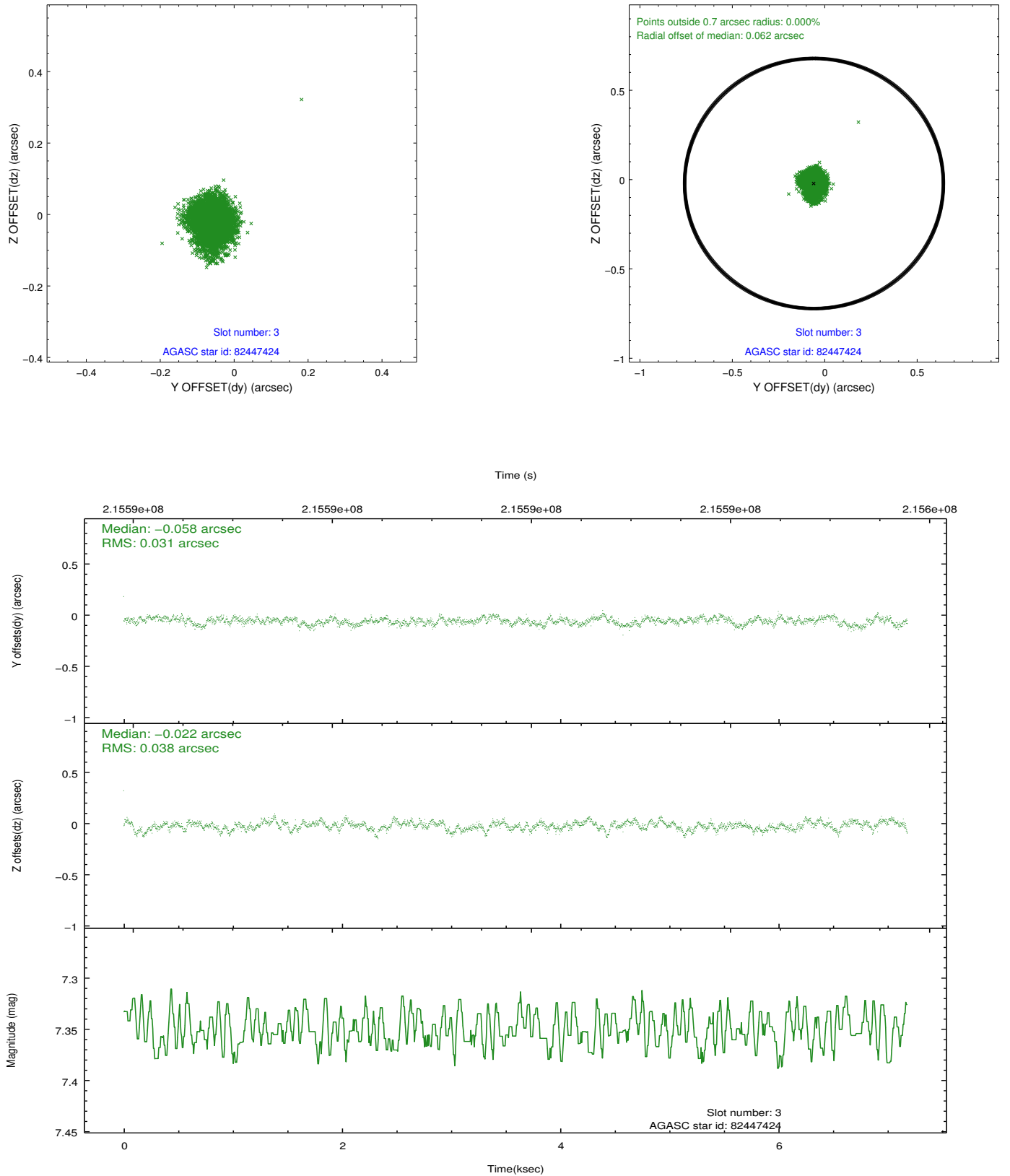


### Slot Statistics

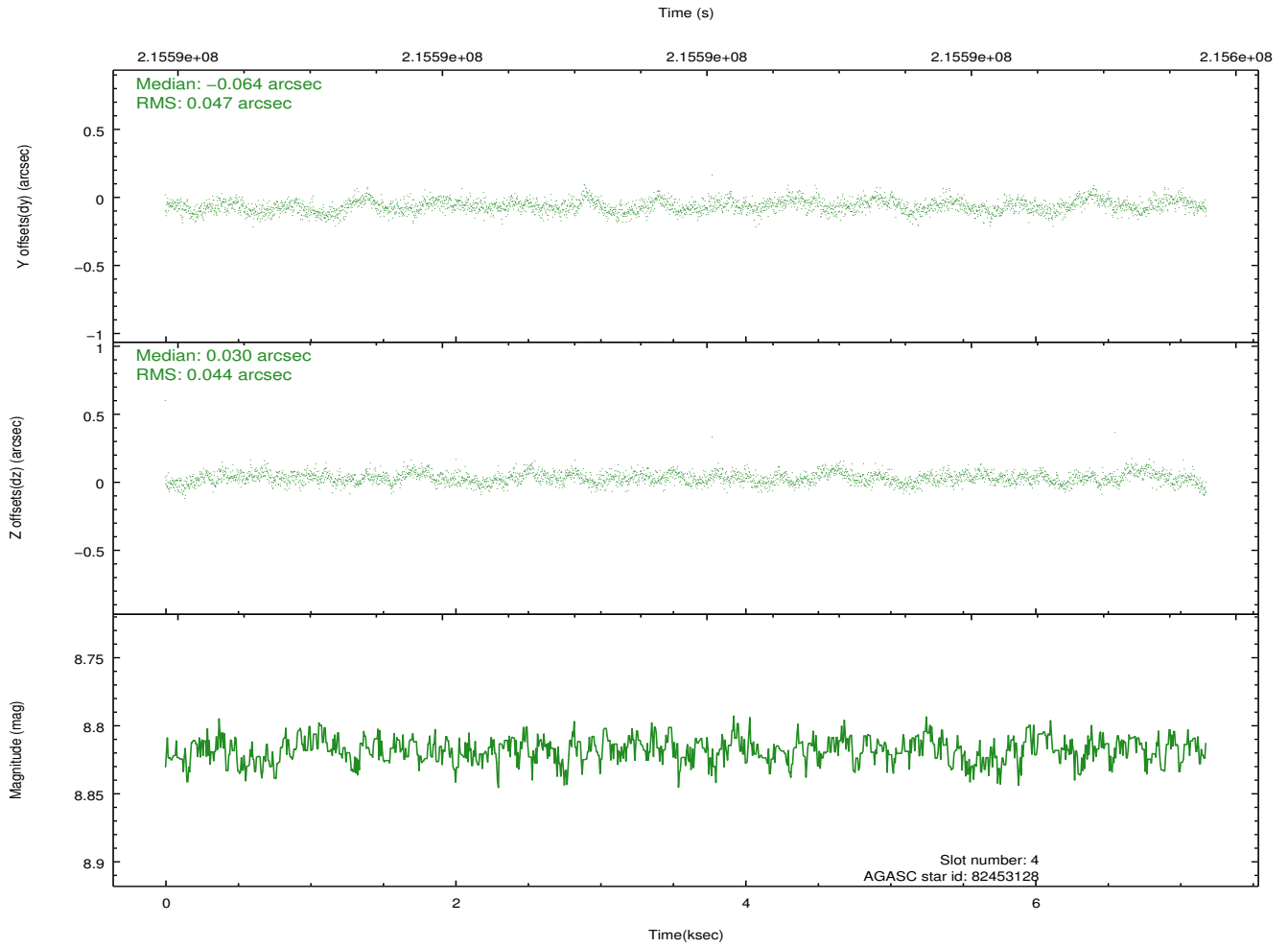
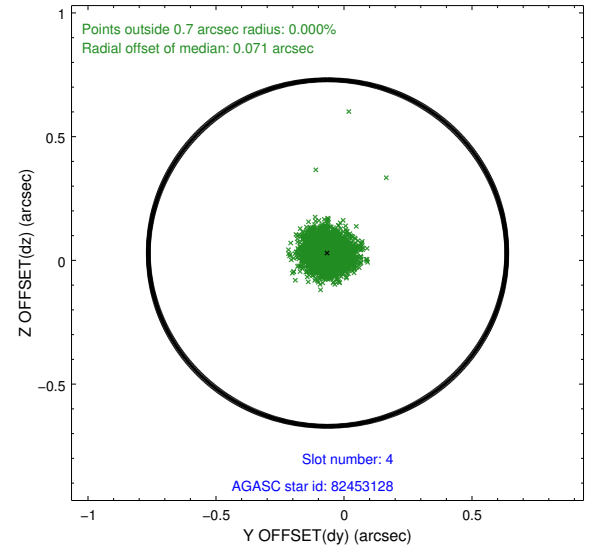
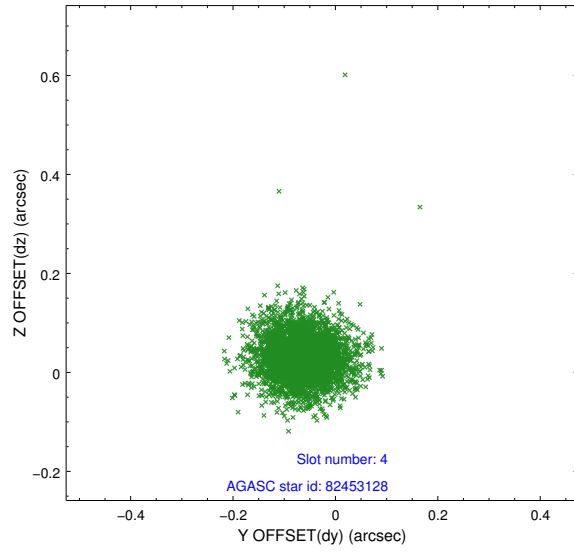
slot	status	id	mag	n_pts	med_dy	med_dz	dr1	dr2	ra	dec	mean_y	mean_z
0	FID	ACIS-S-1	7.19	1752	0.036	-0.044	0.008	0.013	0.000000	0.000000	935.26	-1727.23
1	FID	ACIS-S-5	7.24	1752	-0.081	0.020	0.006	0.011	0.000000	0.000000	-1813.42	169.55
2	FID	ACIS-S-6	7.35	1752	0.024	0.036	0.009	0.014	0.000000	0.000000	399.92	814.44
3	GUIDE	82447424	7.35	3504	-0.058	-0.022	0.053	0.082	28.696705	13.757011	-1012.72	-2162.06
4	GUIDE	82453128	8.82	3502	-0.064	0.030	0.067	0.111	29.452085	12.943166	2222.55	99.27
5	GUIDE	82453376	9.63	3500	0.044	-0.031	0.115	0.189	29.407509	13.953603	-1405.47	390.99
6	GUIDE	82453552	8.29	3503	0.065	0.067	0.061	0.100	29.203096	13.606235	-253.60	-472.07
7	GUIDE	82453896	10.01	3501	0.020	-0.041	0.117	0.190	29.767928	13.737923	-482.06	1546.60

## 2.4 Star Slots

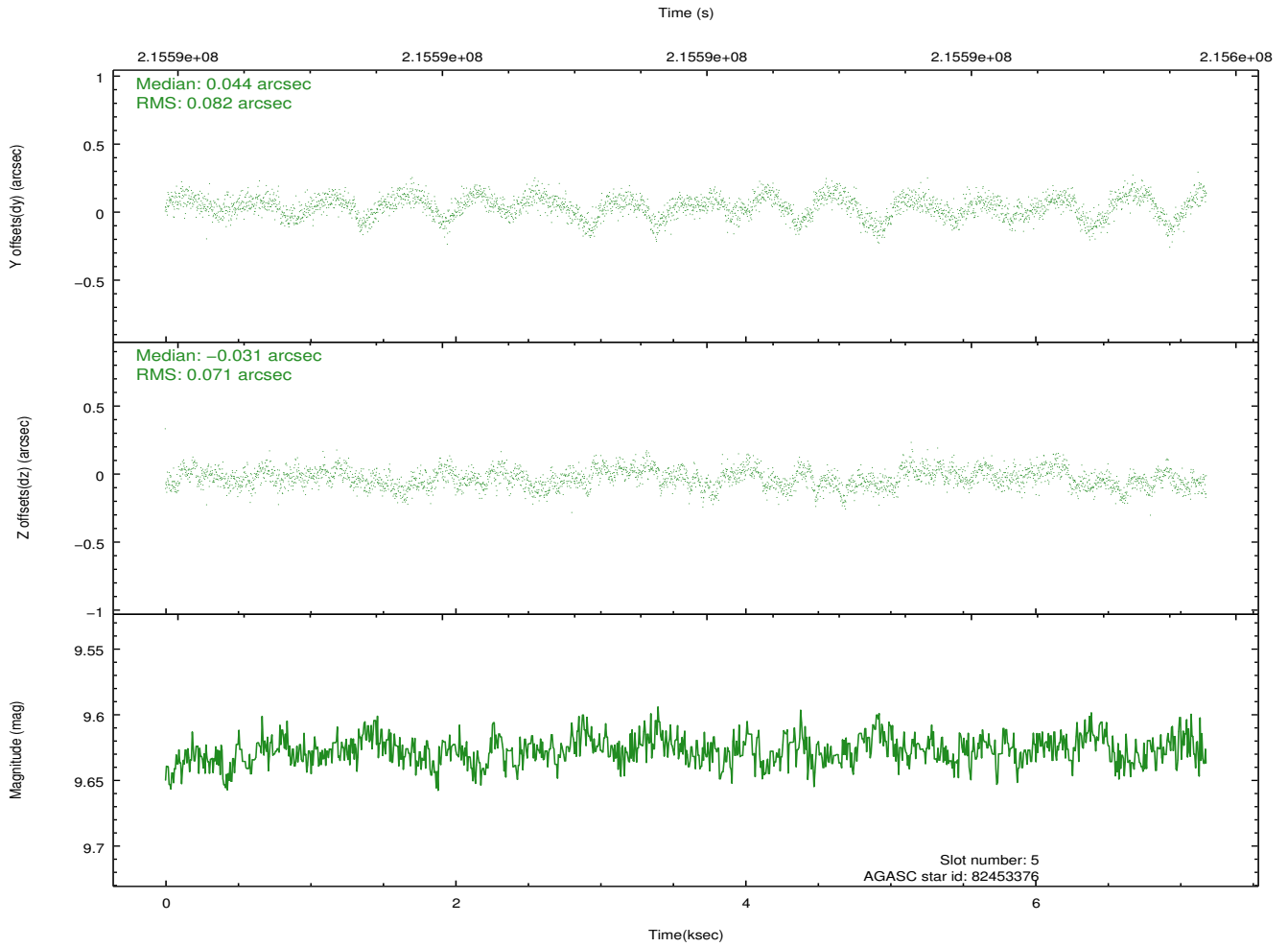
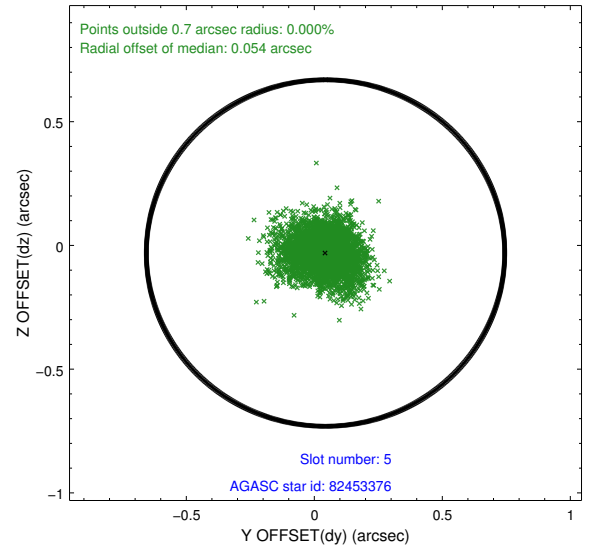
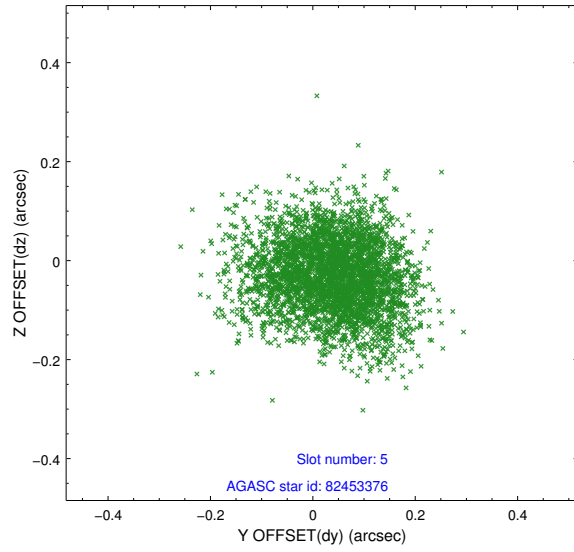
### 2.4.1 Slot 3



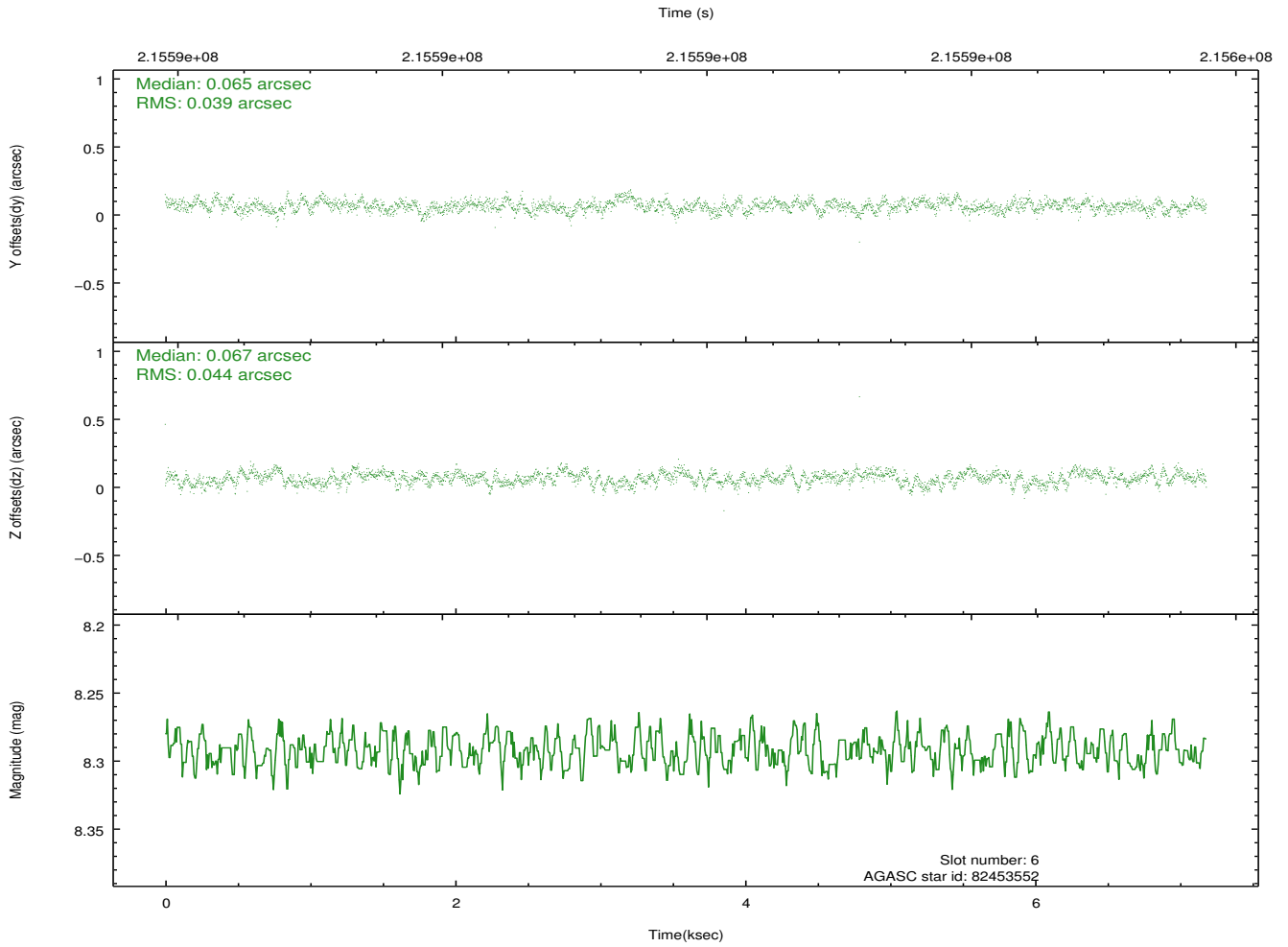
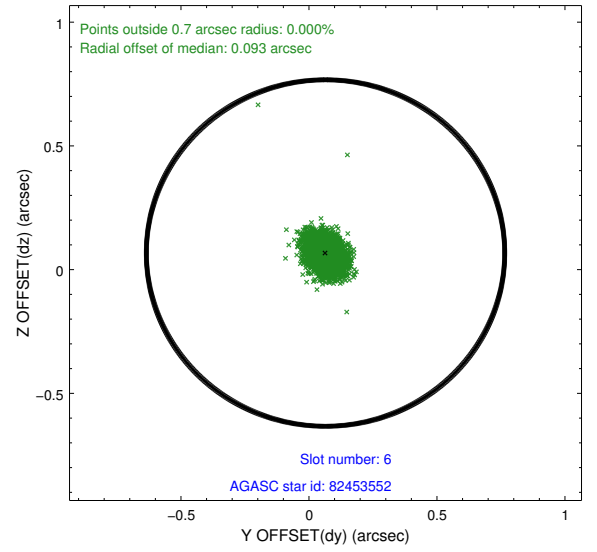
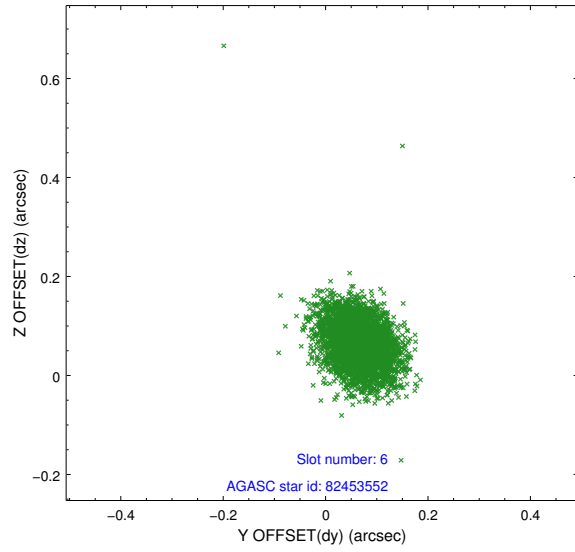
## 2.4.2 Slot 4



### 2.4.3 Slot 5

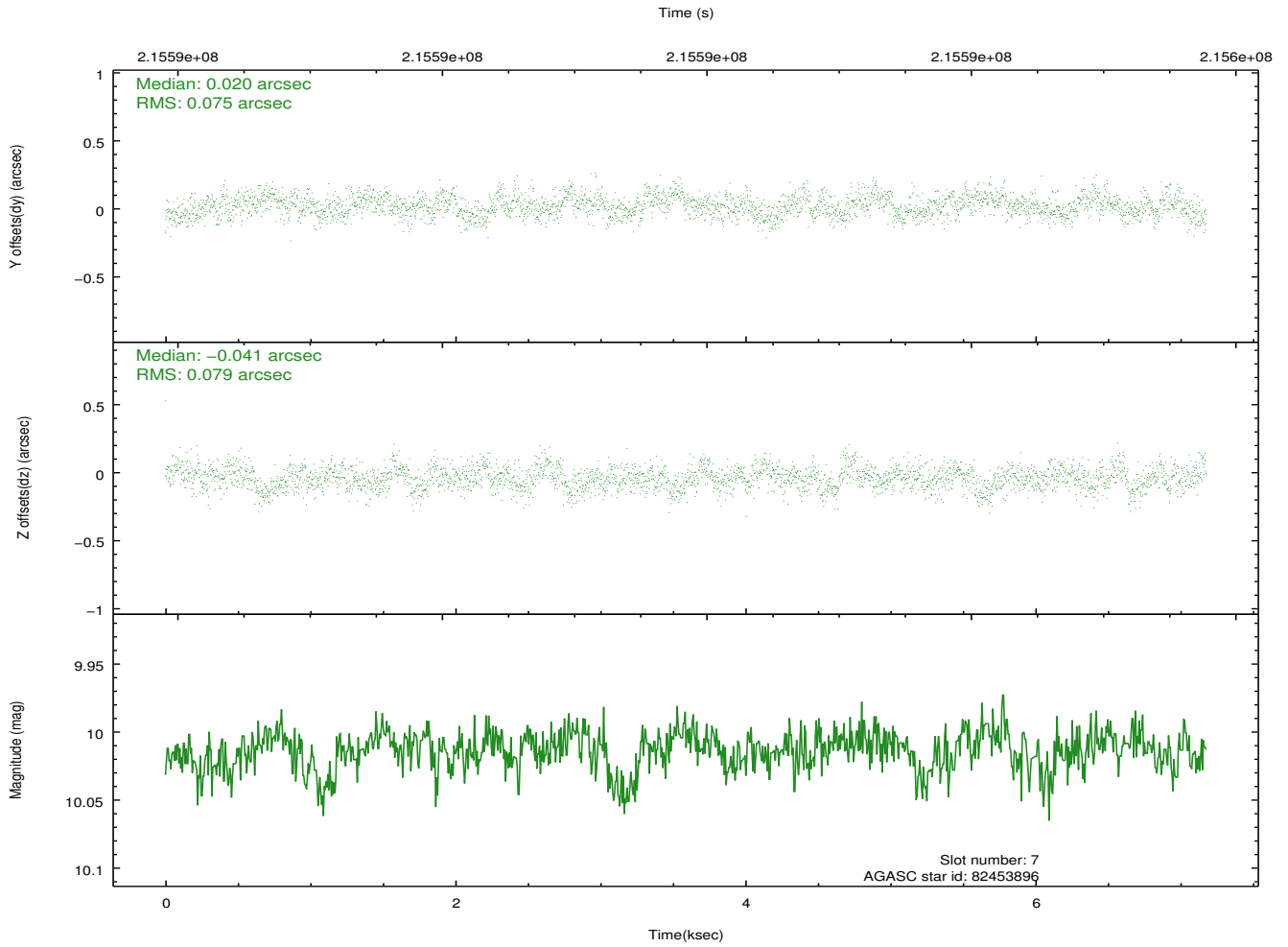
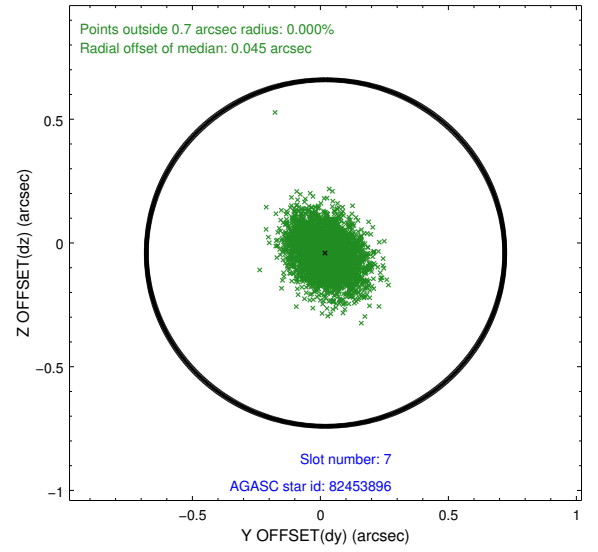
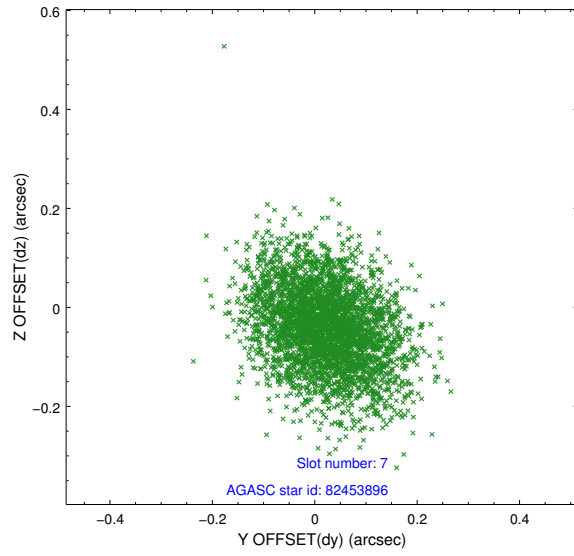


## 2.4.4 Slot 6



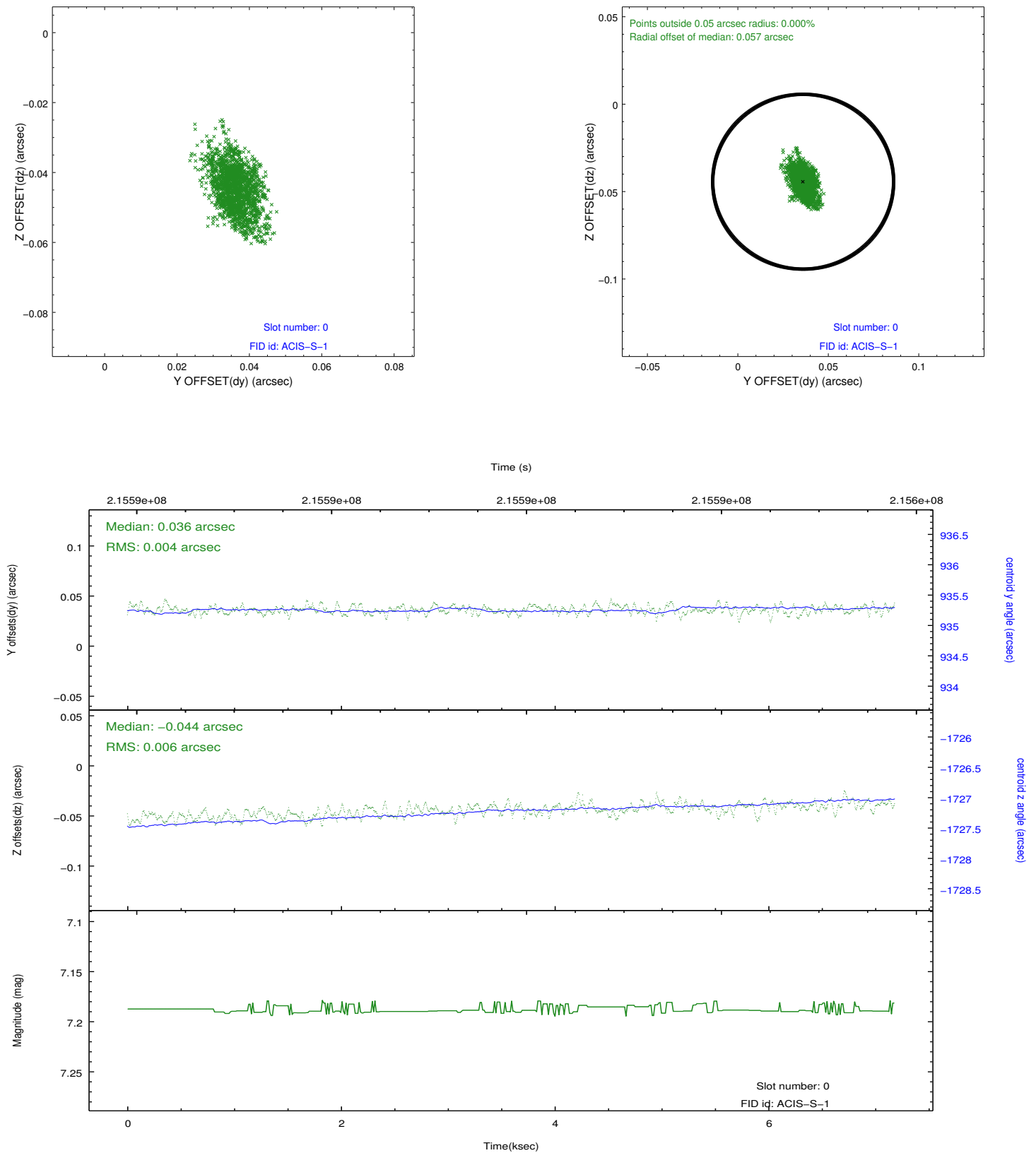


## 2.4.5 Slot 7

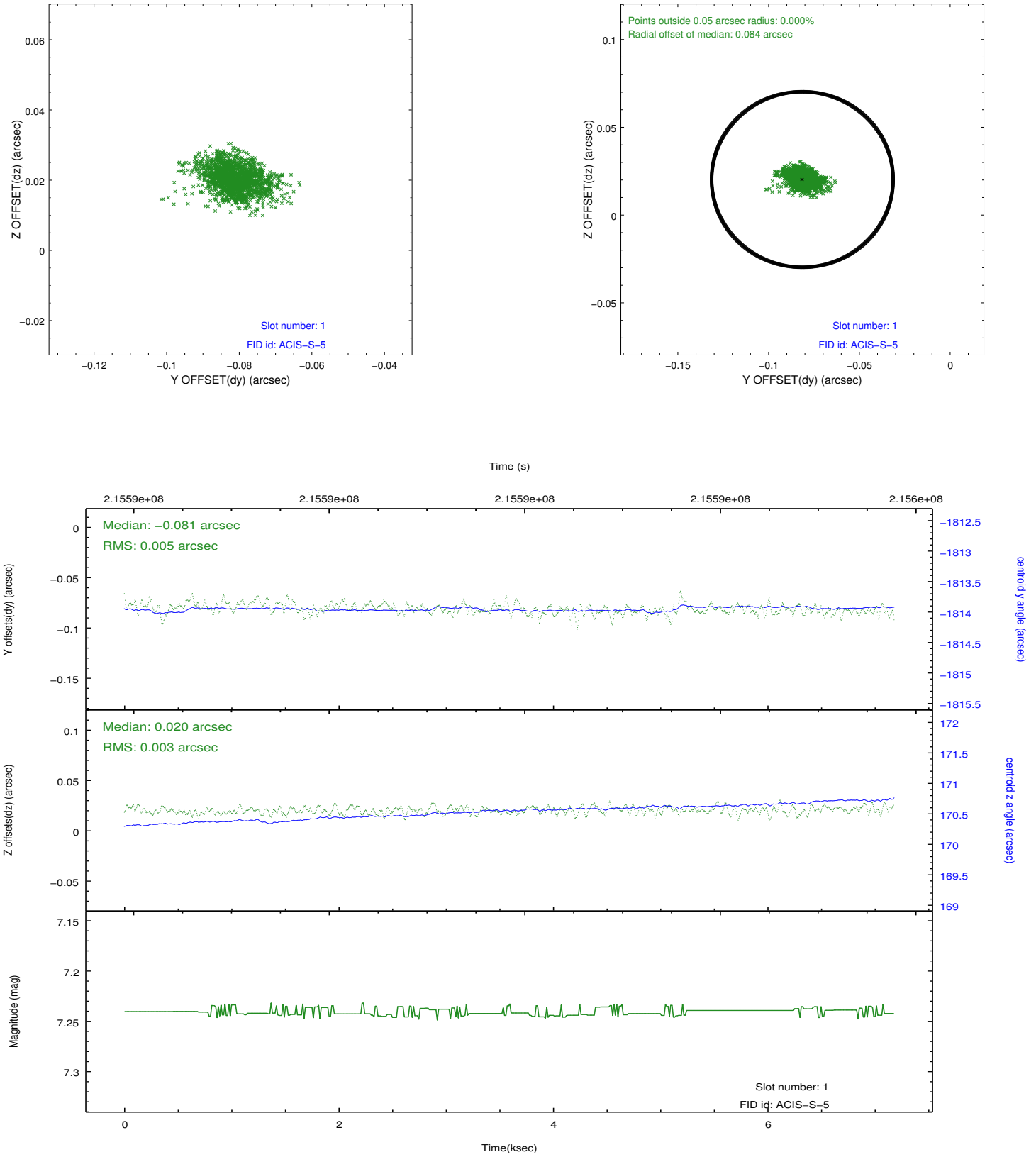


## 2.5 FID Slots

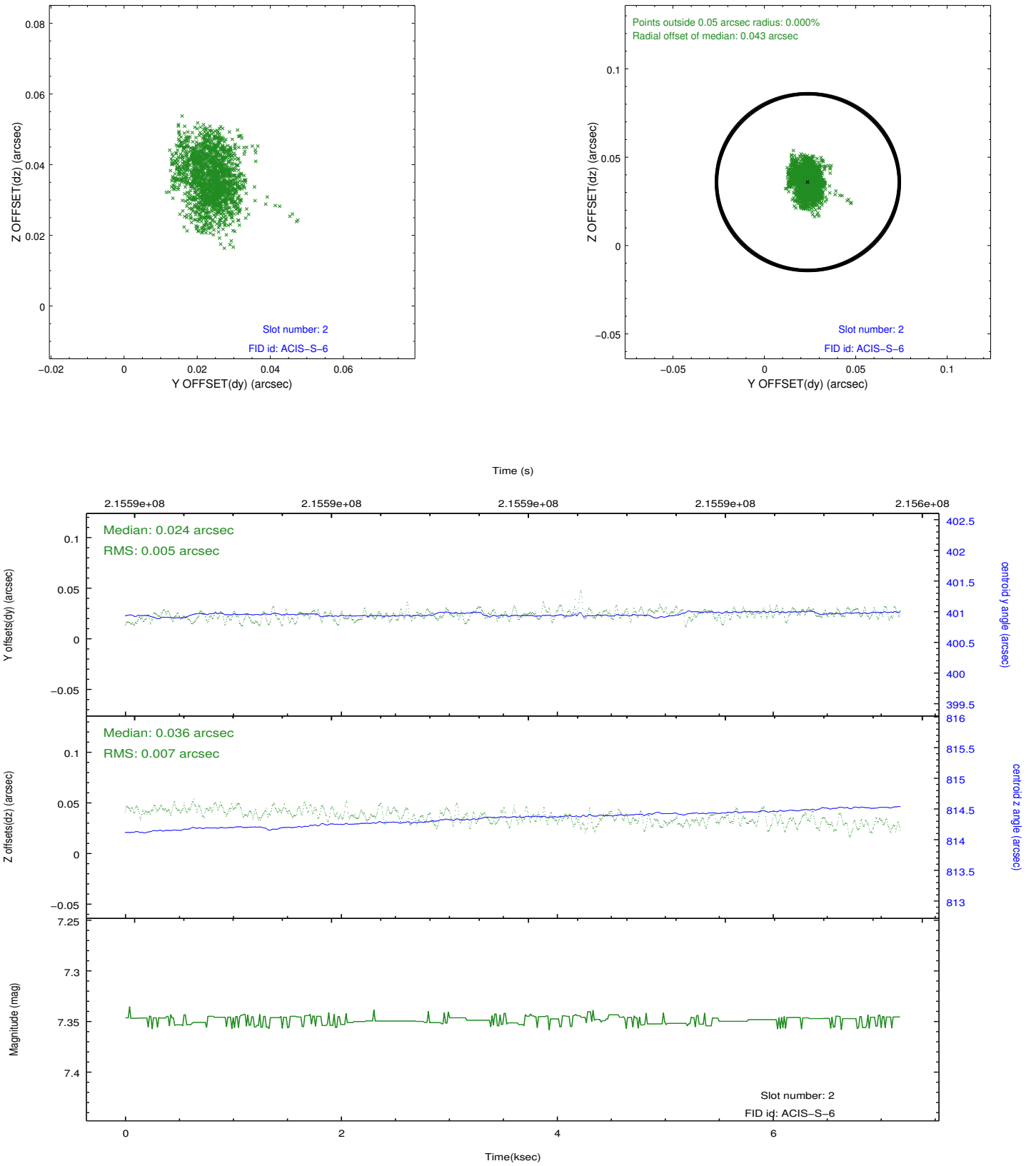
### 2.5.1 Slot 0



## 2.5.2 Slot 1



### 2.5.3 Slot 2



## A Summary

### A.1 Status

V&V Scientist	Jen Lauer
V&V Date (YYYY-MM-DD)	2013.01.03
V&V Edition	1
V&V Disposition and Status	OK
V&V Charge Time	7.177

### A.2 Comments