

V&V Reference Report

L2 ASCDS Version : 7.6.7.1

Observation 5631 - L2 Version 001
Chandra X-Ray Center

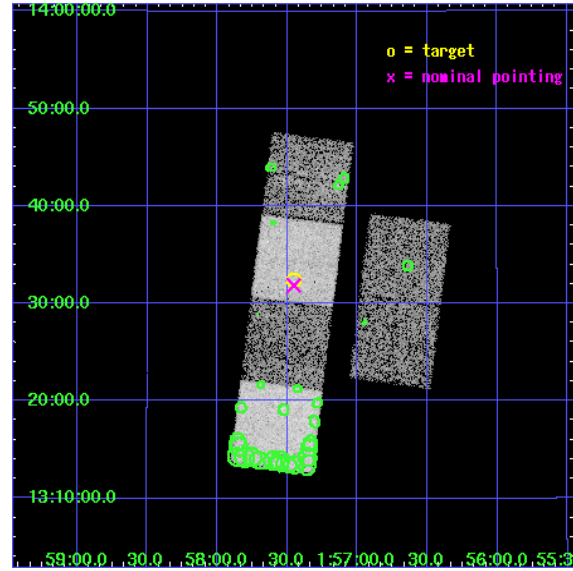
L2 Processing Date : Apr 13 2006

Contents

1	Front	2
2	OBI	3
2.1	OBI	3
2.1.1	Images	3
2.1.2	Bias	3
2.1.3	Parameters	4
2.1.4	Events	4
2.2	Compared Parameters	5
2.3	Aspect	6
2.4	Star Slots	9
2.4.1	Slot 3	9
2.4.2	Slot 4	10
2.4.3	Slot 5	11
2.4.4	Slot 6	12
2.4.5	Slot 7	13
2.5	FID Slots	14
2.5.1	Slot 0	14
2.5.2	Slot 1	15
2.5.3	Slot 2	16
3	Point Sources	17
A	Summary	18
A.1	Status	18
A.2	Comments	18

1 Front

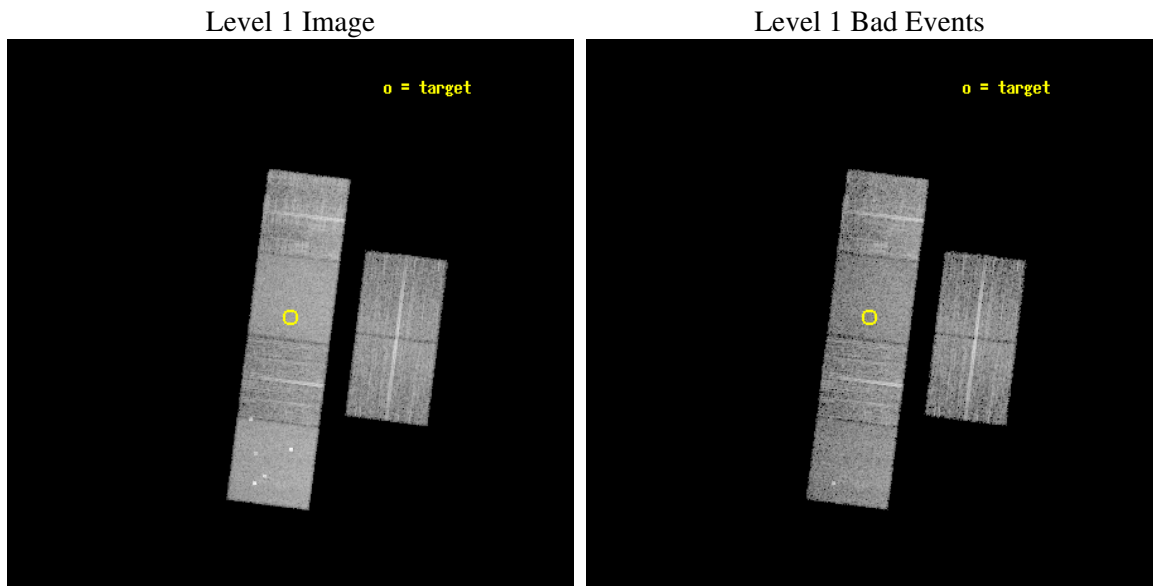
seq_num	701054
obs_id	5631
title	THE X-RAY PROPERTIES OF HIGHER REDSHIFT RED AGN
observer	Dr. BELINDA WILKES
object	2MASS 015727+133226
dtcycle	0
cycle	P
ra_targ	29.36375
dec_targ	13.54075
ra_nom	29.363246530505
dec_nom	13.531056775348
roll_nom	277.22432827938
revision	2
ontime	7177.5999732614
livetime	7086.7128805681
ontime2	7177.5999732614
ontime3	7177.5999732614
ontime5	7177.5999732614
ontime6	7177.5999732614
ontime7	7177.5999732614
ontime8	7174.359102428
l2events	88078



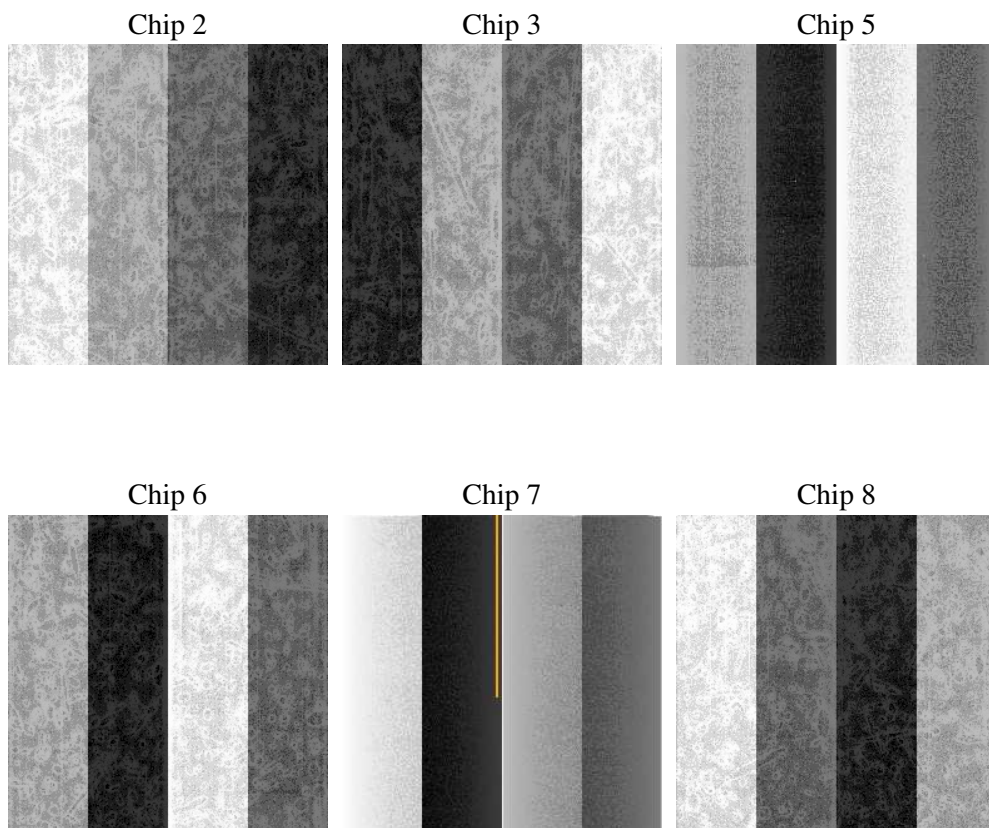
2 OBI

2.1 OBI

2.1.1 Images



2.1.2 Bias



2.1.3 Parameters

obi_num	0
ascdsver	7.6.7.1
caldbver	3.2.1
date	2006-04-13T12:15:44
revision	2

sched_exp_time	7000.000000
ontime	7389.5020614564
ontime2	7389.5020614564
ontime3	7389.5020614564
ontime5	7389.5020614564
ontime6	7389.5020614564
ontime7	7389.5020614564
ontime8	7386.261190623
l1events	420886

2.1.4 Events

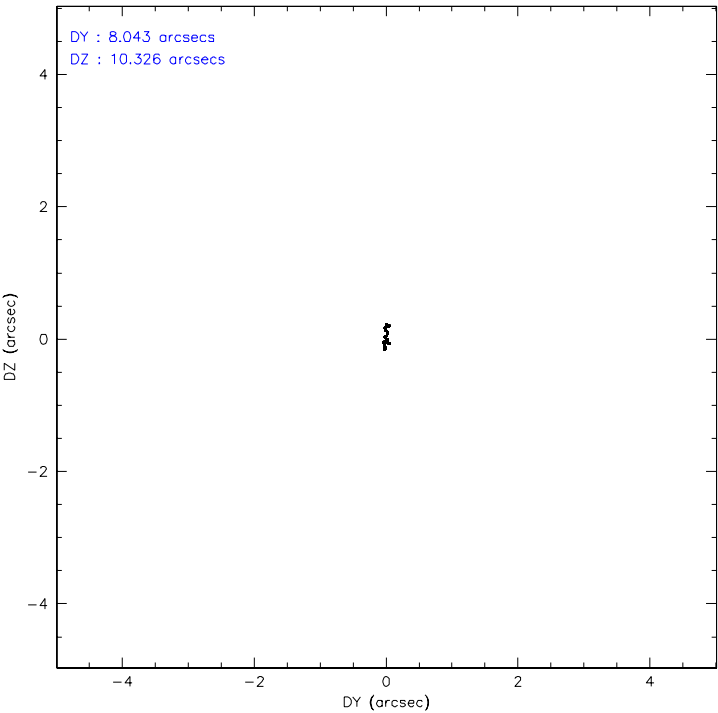
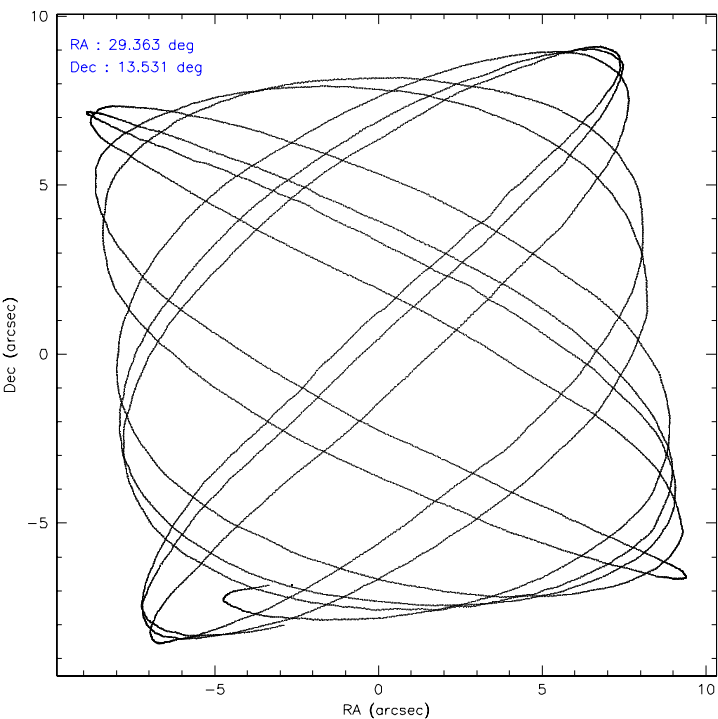
	ccd 2	ccd 3	ccd 5	ccd 6	ccd 7	ccd 8
level 1 events	60555	56288	88430	60608	77873	77132
rejected events	53652	49674	50049	53743	48983	60004
rejected %	88%	88%	56%	88%	62%	77%

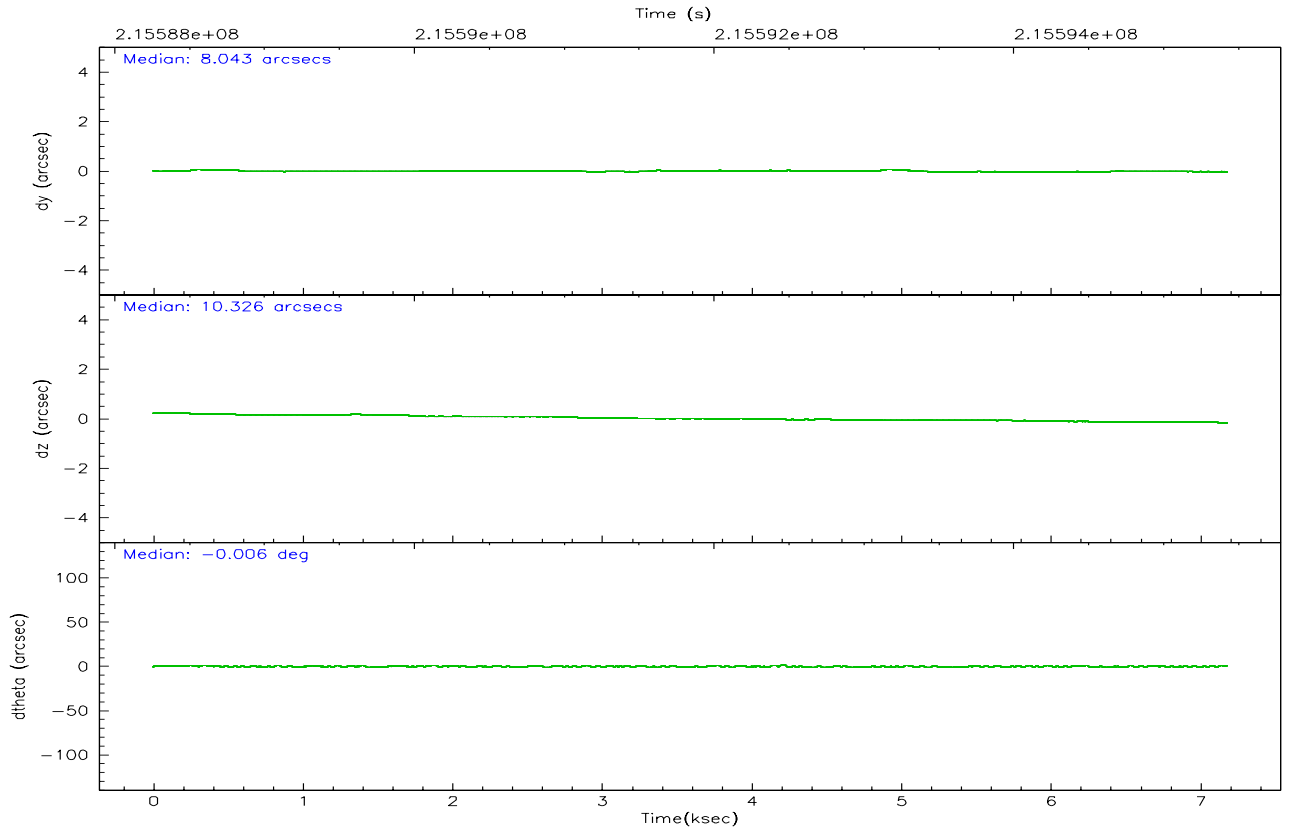
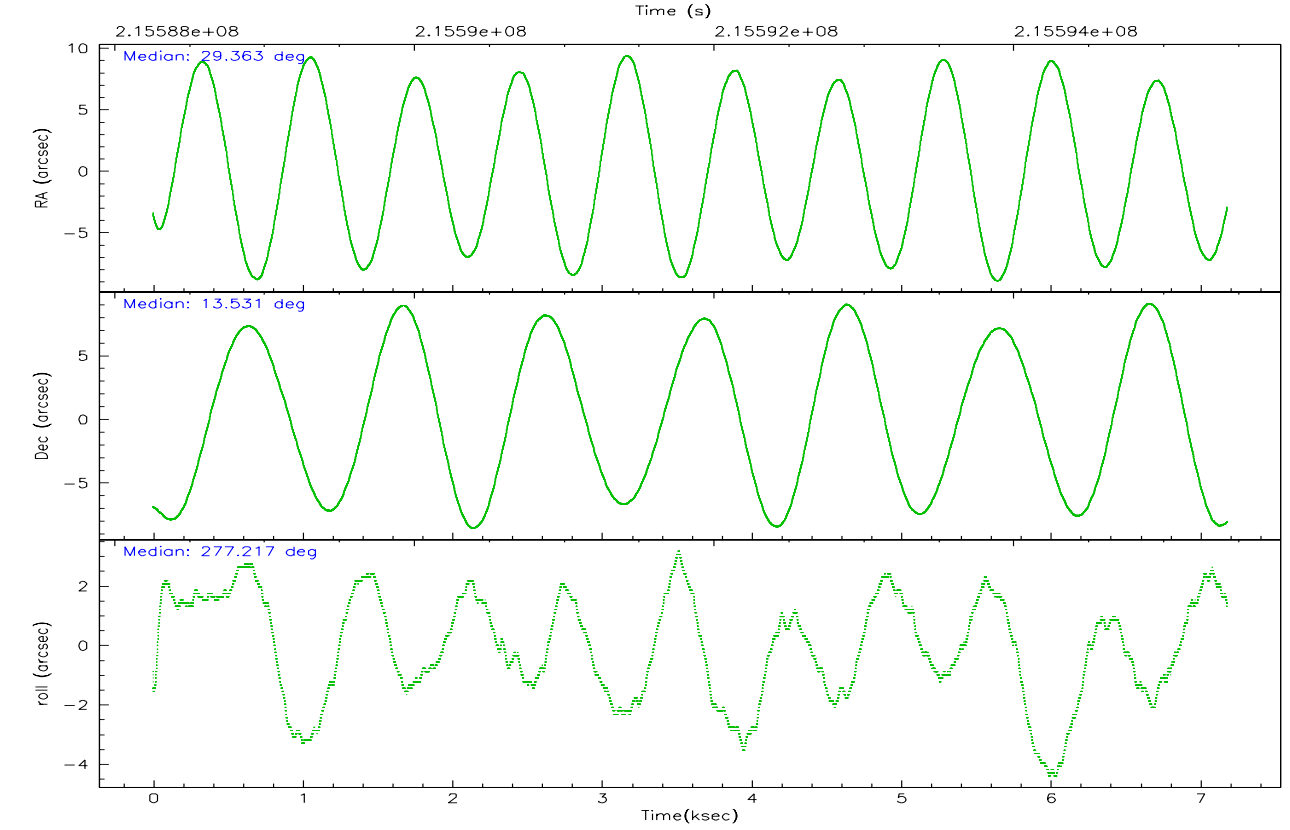
	ccd 2	ccd 3	ccd 5	ccd 6	ccd 7	ccd 8
grade 0 events	3123	2951	4013	2810	1628	5637
	5%	5%	4%	4%	2%	7%
grade 1 events	31	27	112	24	55	42
	0%	0%	0%	0%	0%	0%
grade 2 events	1480	1327	11974	1567	7392	3745
	2%	2%	13%	2%	9%	4%
grade 3 events	623	664	840	668	1521	2072
	1%	1%	0%	1%	1%	2%
grade 4 events	673	675	795	614	1436	1814
	1%	1%	0%	1%	1%	2%
grade 5 events	2272	2518	4166	2729	5108	3359
	3%	4%	4%	4%	6%	4%
grade 6 events	1168	1180	21895	1412	17778	4352
	1%	2%	24%	2%	22%	5%
grade 7 events	51185	46946	44635	50784	42955	56111
	84%	83%	50%	83%	55%	72%

2.2 Compared Parameters

Parameter	Planned	Actual	Parameter	Planned	Actual
Instrument	ACIS	ACIS	Obspar format version number	6	6
Detector	ACIS-235678	ACIS-235678	Obspar file type	PREDICTED	ACTUAL
Grating	NONE	NONE	Obspar update status	NONE	UPDATED
Data mode	FAINT	FAINT	On-chip summing requested	N	N
Observation mode	POINTING	POINTING	Subarray requested	NONE	NONE
Pointing RA	29.346002	29.36324653050494	Alternating exposures requested	N	N
Pointing Dec	13.552551	13.5310567753476	Primary exposure time	0.000000	3.2
Pointing Roll	277.071739	277.2243282793839			
SIM focus pos (mm)	-0.684267	-0.6828225247311905			
SIM defocus (mm)	0	0.001444936568705701			
SIM translation stage pos (mm)	-190.132523	-190.1425803651734			
SIM translation stage offset (mm)	0	0.01005778216563158			
Observation start time	215588432.184000	215587257.39711			
Observation start date	2004-10-31T05:39:28	2004-10-31T05:20:57			
Observation end time	215595432.184000	215596557.73503			
Observation end date	2004-10-31T07:36:08	2004-10-31T07:55:57			
Read mode	TIMED	TIMED			

2.3 Aspect



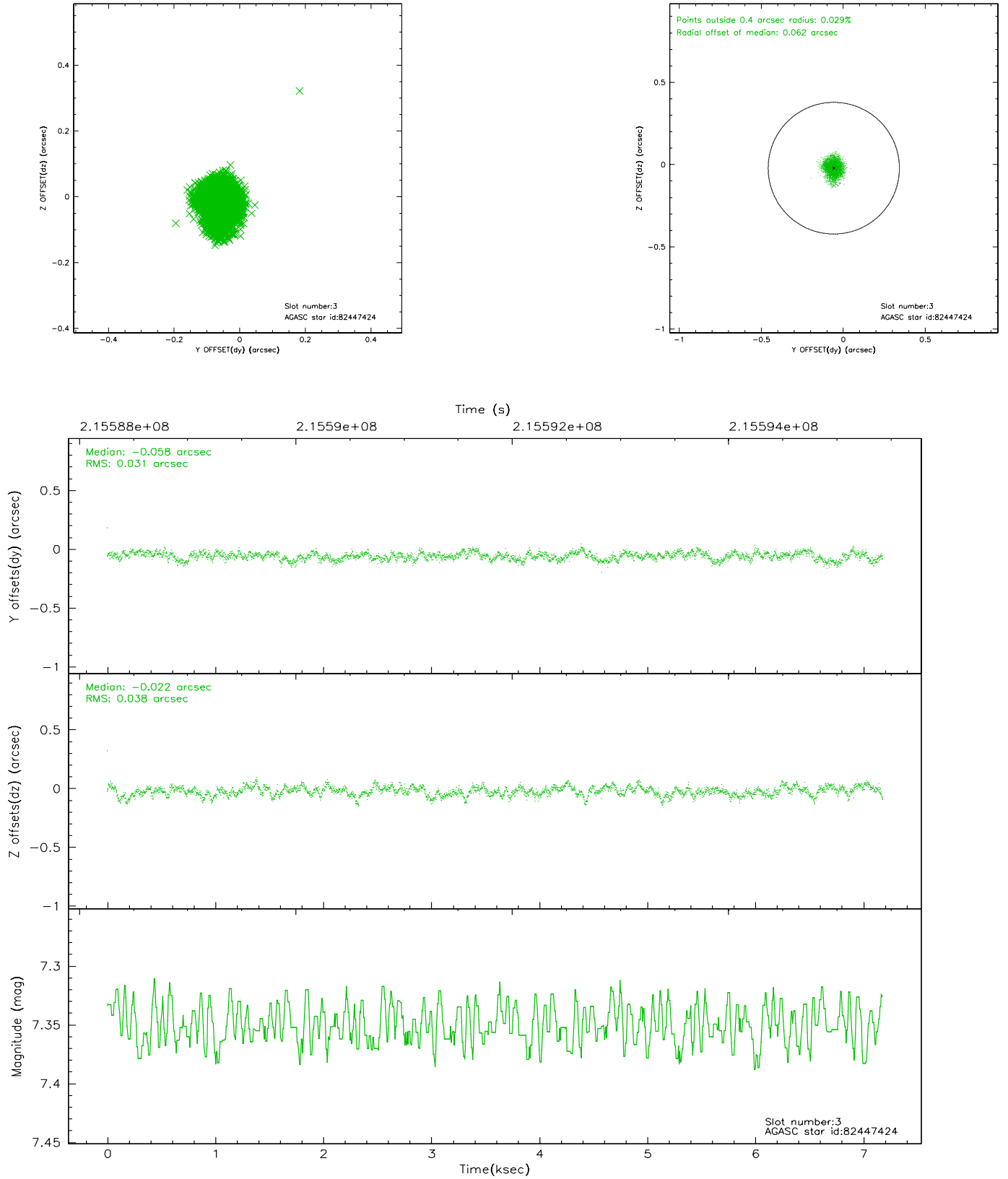


Slot Statistics

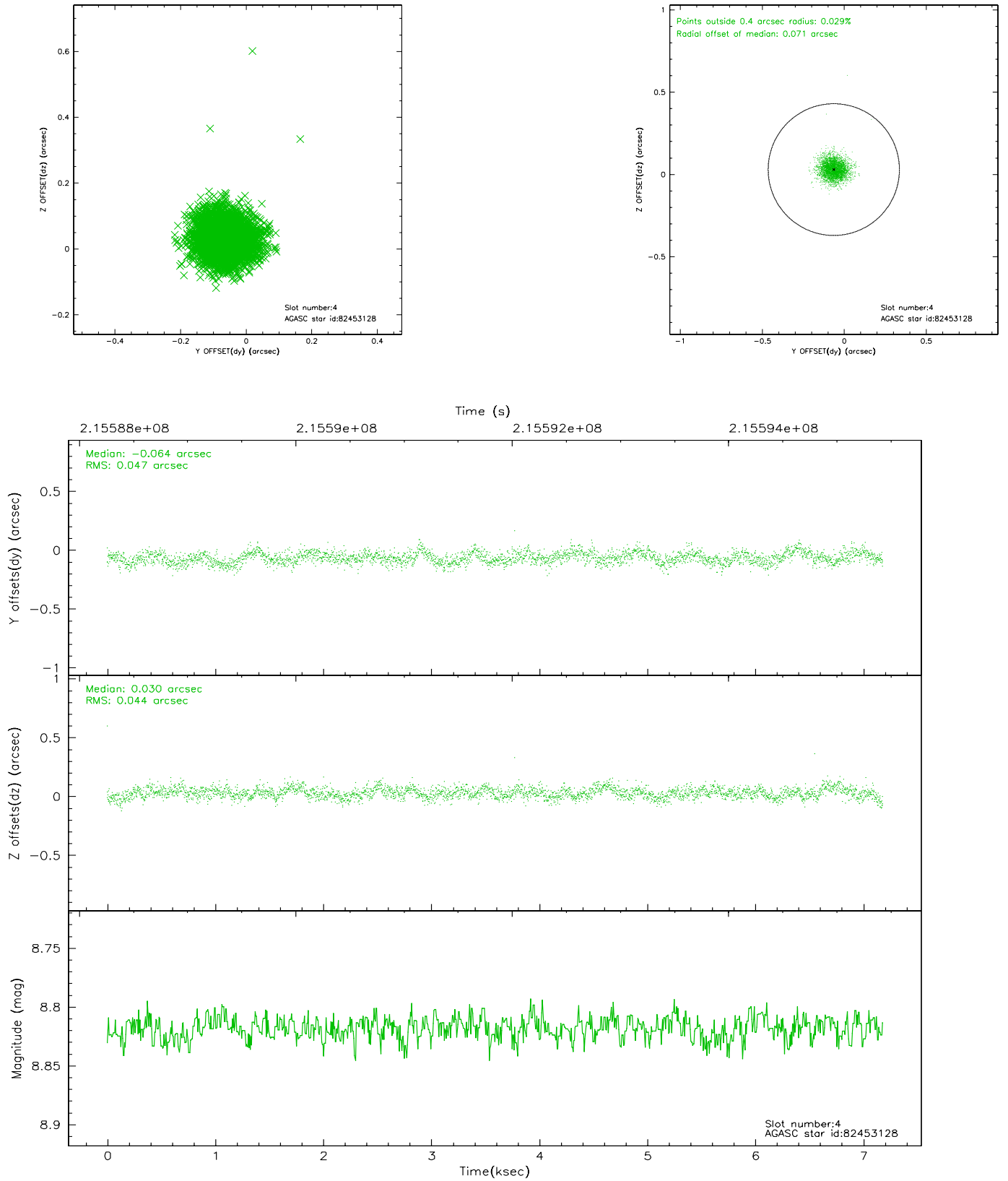
slot	status	id	mag	n_pts	med_dy	med_dz	dr1	dr2	ra	dec	mean_y	mean_z
0	FID	ACIS-S-1	7.19	1752	0.016	-0.017	0.007	0.013	0.000000	0.000000	935.24	-1727.19
1	FID	ACIS-S-5	7.24	1752	-0.051	0.013	0.006	0.010	0.000000	0.000000	-1813.39	169.55
2	FID	ACIS-S-6	7.35	1752	0.014	0.017	0.008	0.014	0.000000	0.000000	399.91	814.43
3	GUIDE	82447424	7.35	3504	-0.058	-0.022	0.053	0.082	28.696705	13.757011	-1012.72	-2162.06
4	GUIDE	82453128	8.82	3502	-0.064	0.030	0.067	0.111	29.452085	12.943166	2222.55	99.27
5	GUIDE	82453376	9.63	3500	0.044	-0.031	0.115	0.189	29.407509	13.953603	-1405.47	390.99
6	GUIDE	82453552	8.29	3503	0.065	0.067	0.061	0.100	29.203096	13.606235	-253.60	-472.07
7	GUIDE	82453896	10.01	3501	0.020	-0.041	0.117	0.190	29.767928	13.737923	-482.06	1546.60

2.4 Star Slots

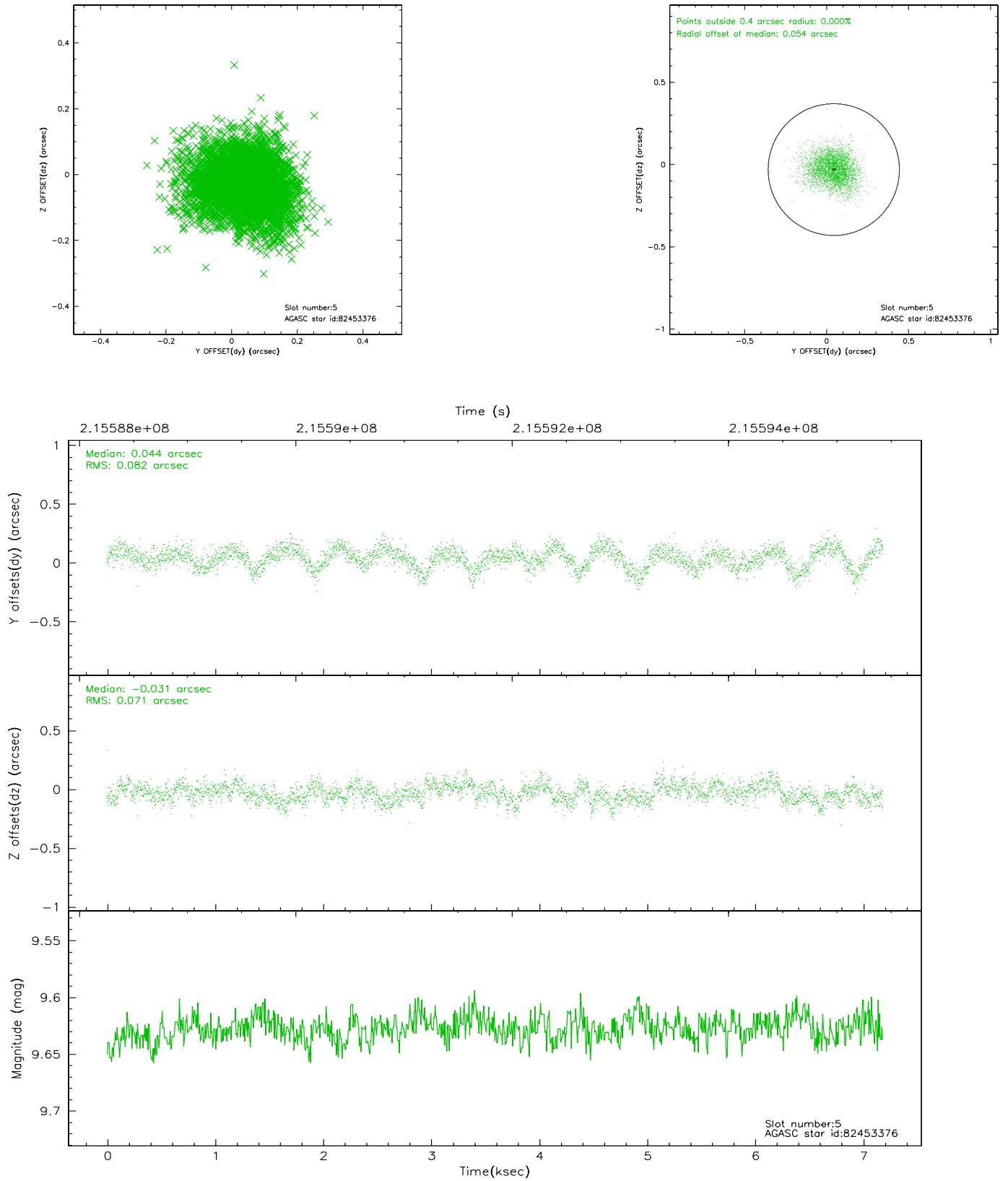
2.4.1 Slot 3



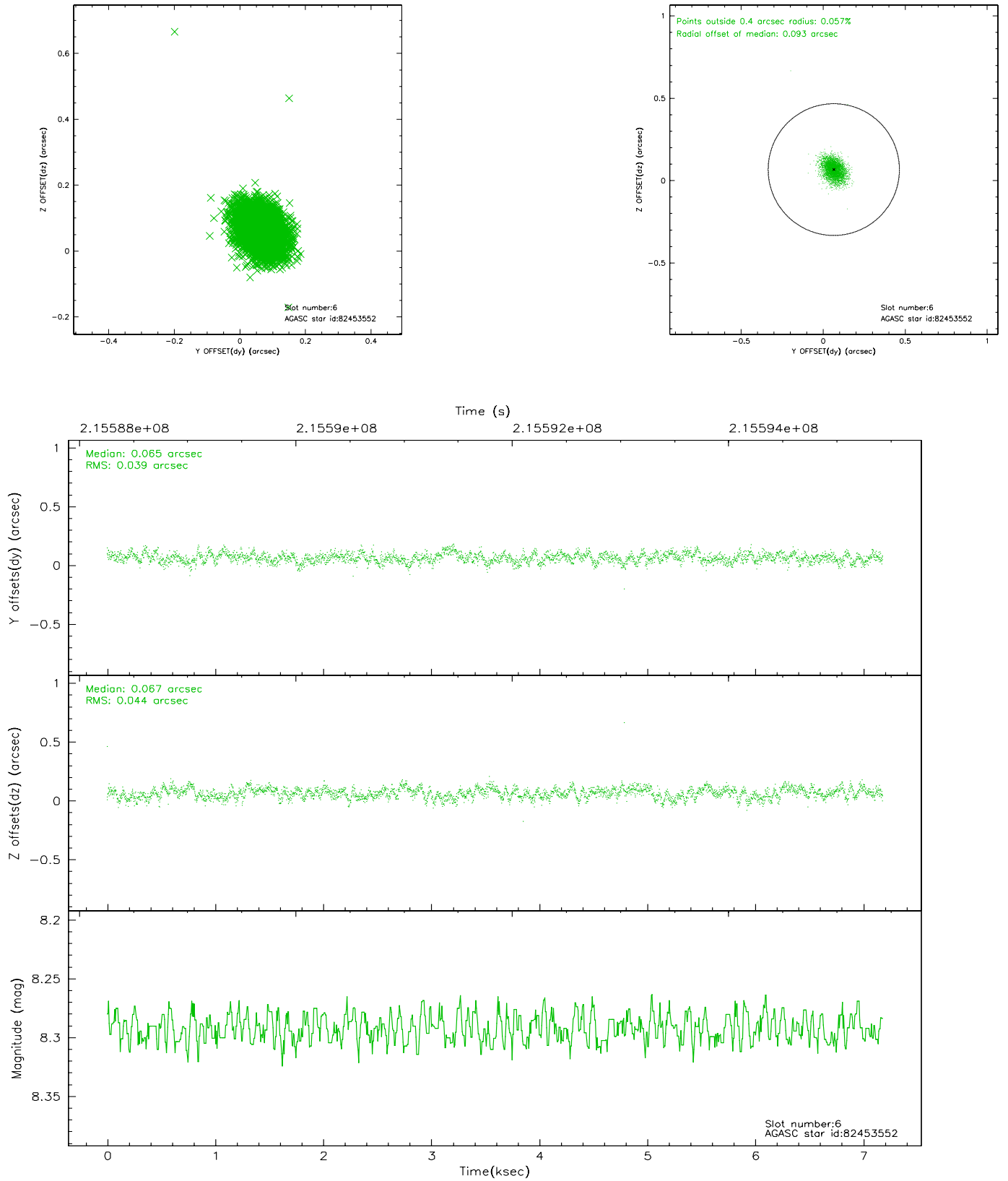
2.4.2 Slot 4



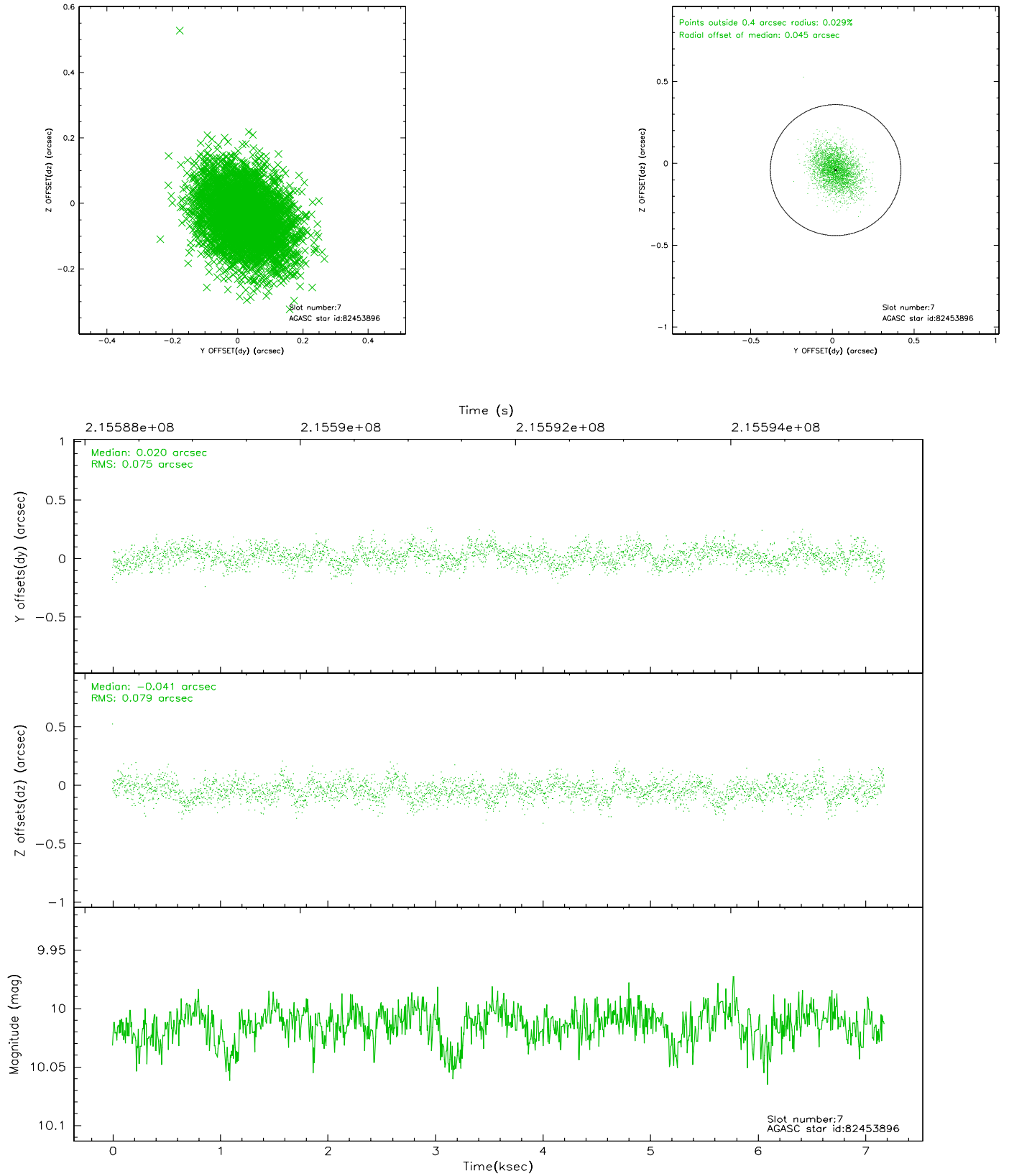
2.4.3 Slot 5



2.4.4 Slot 6

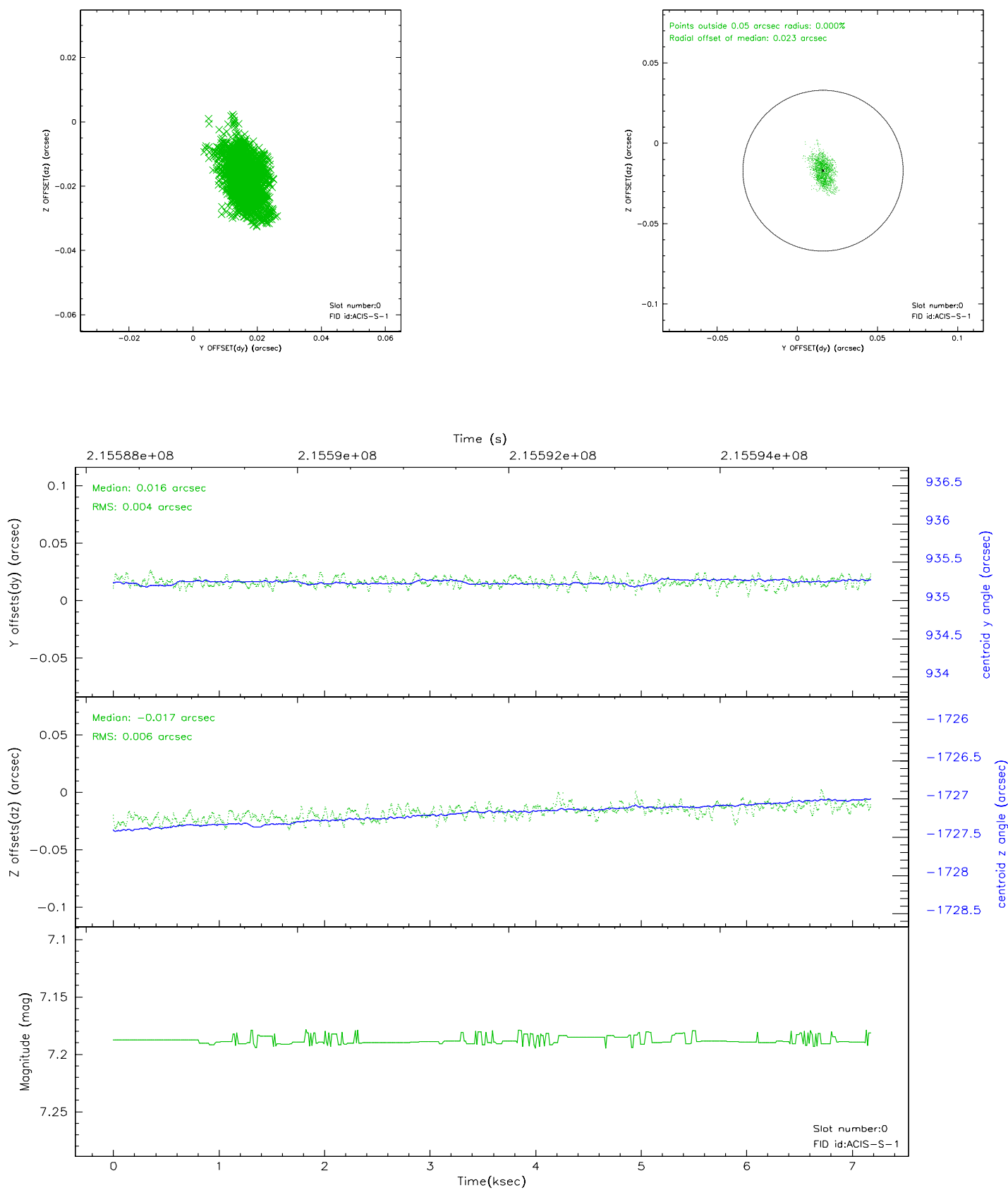


2.4.5 Slot 7

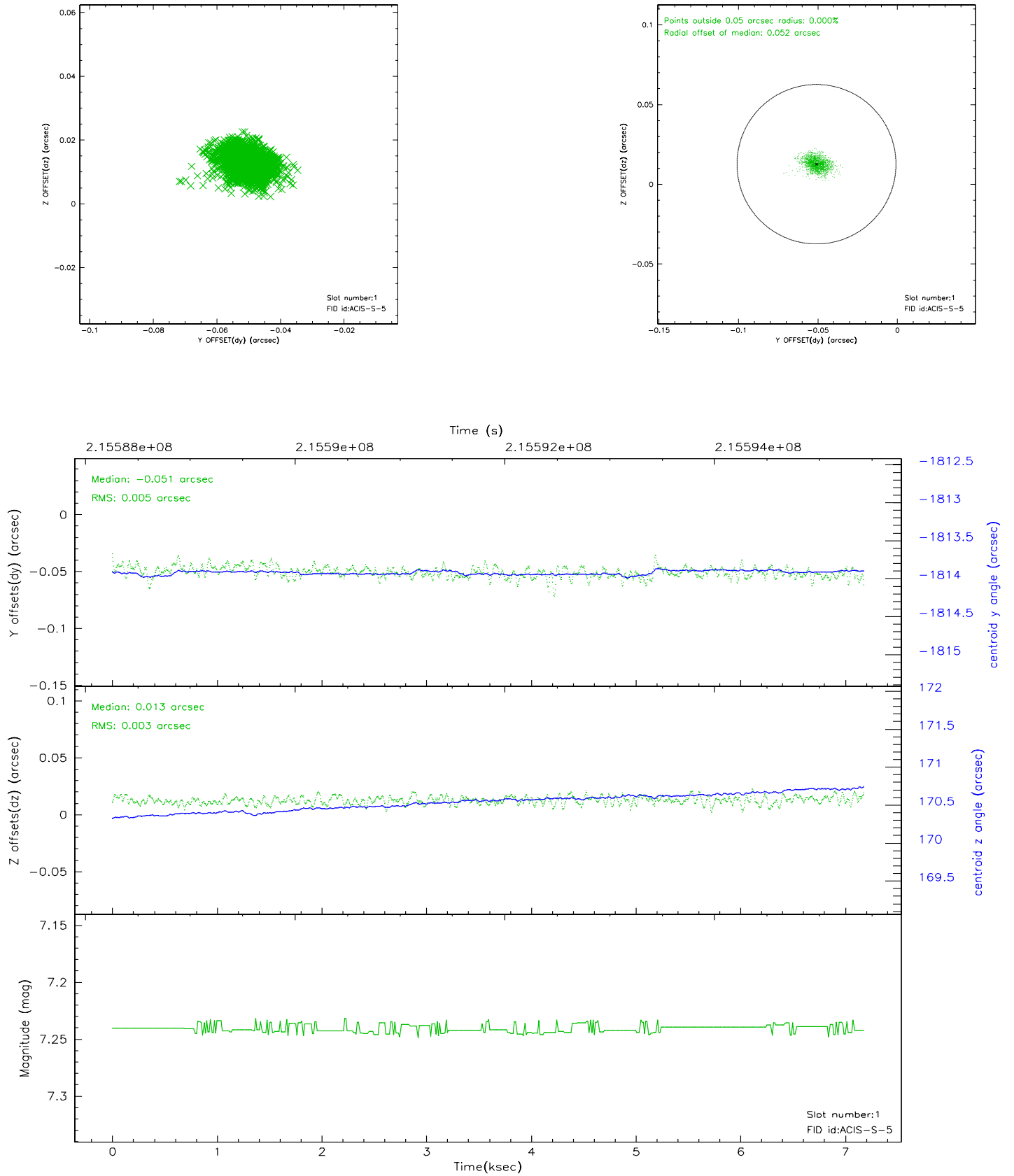


2.5 FID Slots

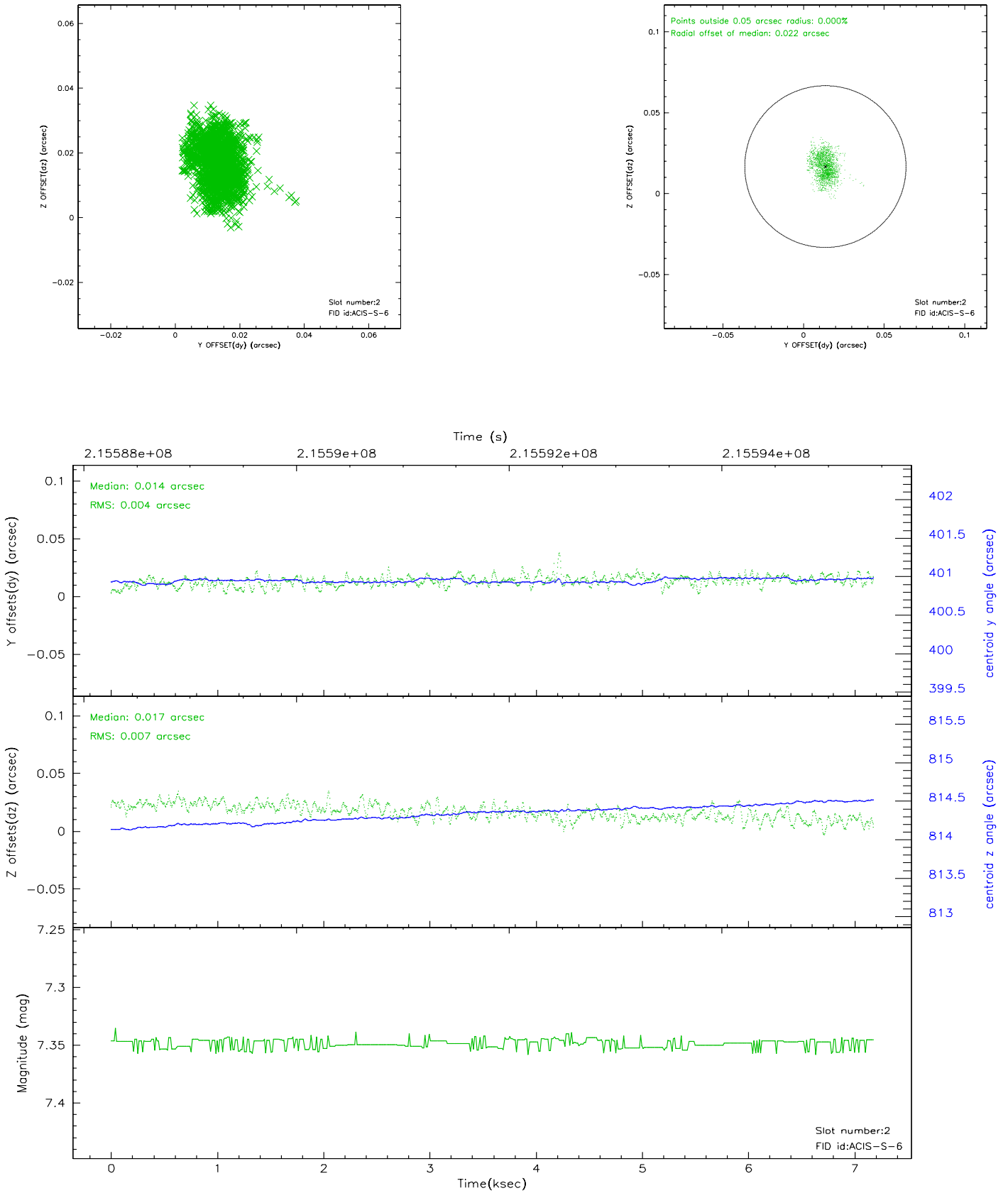
2.5.1 Slot 0



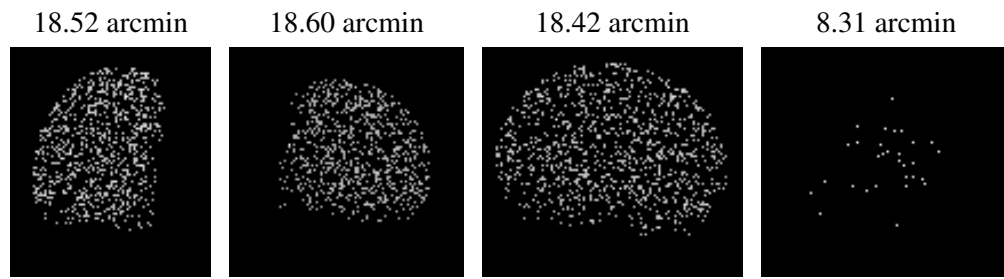
2.5.2 Slot 1



2.5.3 Slot 2



3 Point Sources



A Summary

A.1 Status

V&V Scientist	Jen Lauer
V&V Date (YYYY-MM-DD)	2006.04.13
V&V Edition	1
V&V Disposition and Status	OK
V&V Charge Time	7.177

A.2 Comments