

# V&V Reference Report

## L2 ASCDS Version : 7.6.7

Observation 5611 - L2 Version 002  
Chandra X-Ray Center

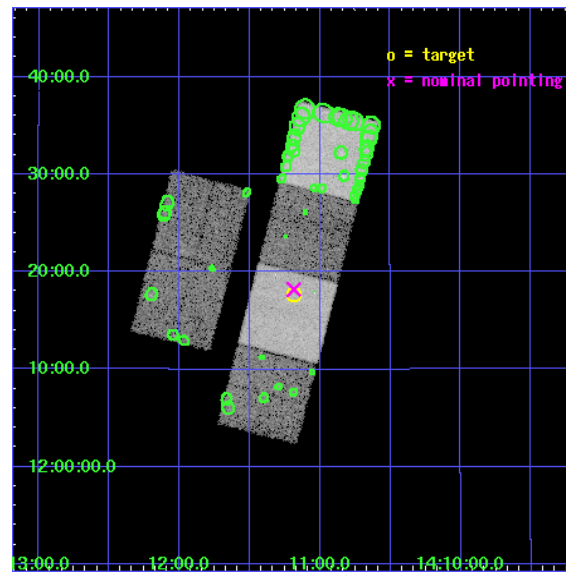
L2 Processing Date: Feb 27 2006

## Contents

<b>1</b>	<b>Front</b>	<b>2</b>
<b>2</b>	<b>OBI</b>	<b>3</b>
2.1	OBI . . . . .	3
2.1.1	Images . . . . .	3
2.1.2	Bias . . . . .	3
2.1.3	Parameters . . . . .	4
2.1.4	Events . . . . .	4
2.2	Compared Parameters . . . . .	5
2.3	Aspect . . . . .	6
2.4	Star Slots . . . . .	9
2.4.1	Slot 3 . . . . .	9
2.4.2	Slot 4 . . . . .	10
2.4.3	Slot 5 . . . . .	11
2.4.4	Slot 6 . . . . .	12
2.4.5	Slot 7 . . . . .	13
2.5	FID Slots . . . . .	14
2.5.1	Slot 0 . . . . .	14
2.5.2	Slot 1 . . . . .	15
2.5.3	Slot 2 . . . . .	16
<b>3</b>	<b>Point Sources</b>	<b>17</b>
<b>A</b>	<b>Summary</b>	<b>18</b>
A.1	Status . . . . .	18
A.2	Comments . . . . .	18

# 1 Front

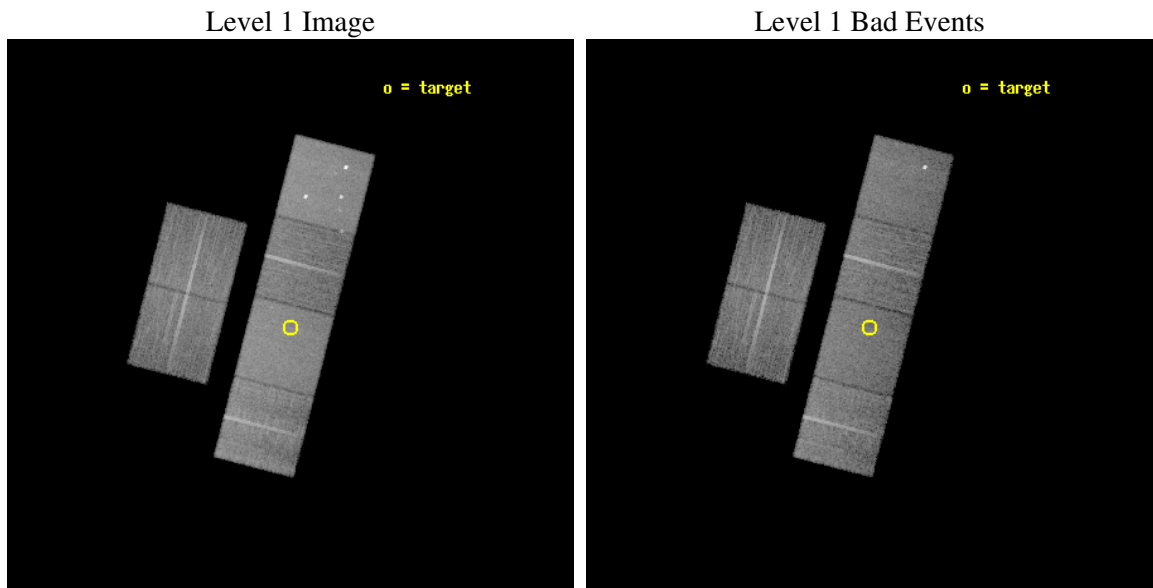
seq_num	701034
obs_id	5611
title	A Chandra Survey of the Most Distant Quasars: X-raying the First Massive Black Holes
observer	Prof. William Brandt
object	SDSS J1411+1217
dtcycle	0
cycle	P
ra_targ	212.797083
dec_targ	12.293694
ra_nom	212.79630890148
dec_nom	12.303317960047
roll_nom	104.42961398908
revision	2
ontime	14457.599946141
livetime	14274.529110302
ontime2	14457.599946141
ontime3	14454.358965874
ontime5	14457.599946141
ontime6	14457.599946141
ontime7	14457.599946141
ontime8	14457.599946141
l2events	169052



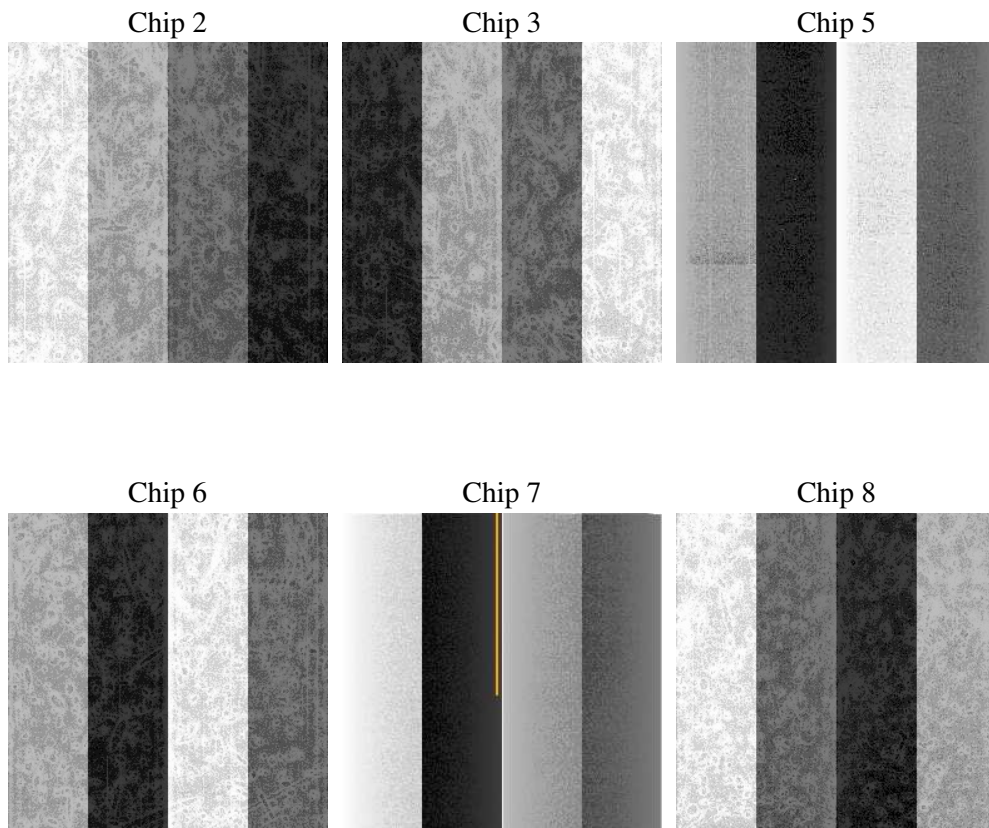
## 2 OBI

### 2.1 OBI

#### 2.1.1 Images



#### 2.1.2 Bias



### 2.1.3 Parameters

obi_num	0
ascdsver	7.6.7
caldbver	3.2.1
date	2006-02-27T12:41:33
revision	2

sched_exp_time	14500.000000
ontime	14461.3890661
ontime2	14461.3890661
ontime3	14458.148085833
ontime5	14461.3890661
ontime6	14461.3890661
ontime7	14461.3890661
ontime8	14461.3890661
l1events	772657

### 2.1.4 Events

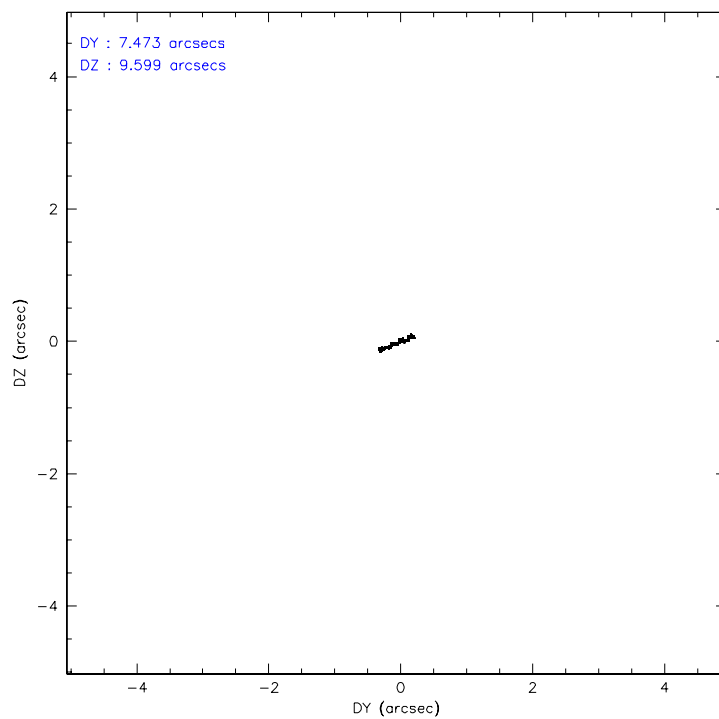
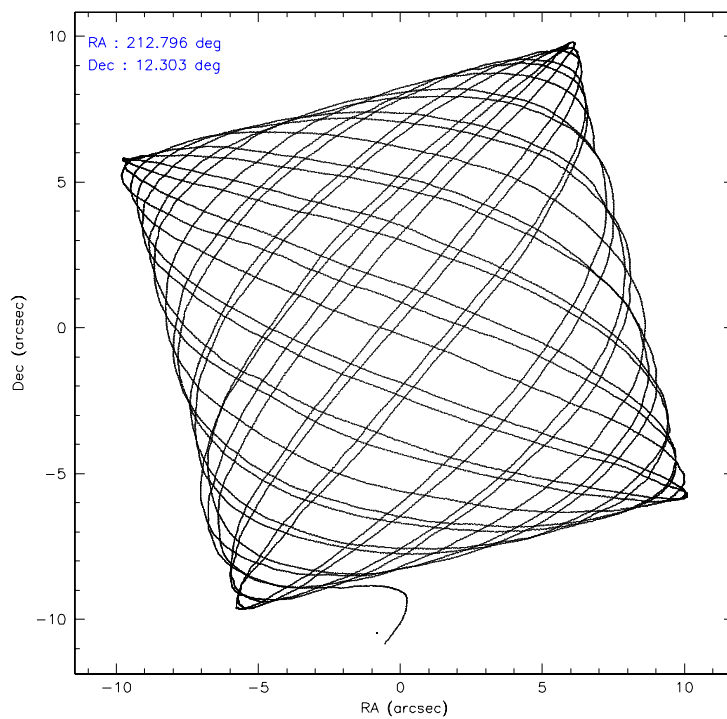
	ccd 2	ccd 3	ccd 5	ccd 6	ccd 7	ccd 8
level 1 events	109666	102797	167611	108268	147861	136454
rejected events	96794	90096	92161	94918	91724	107107
rejected %	88%	87%	54%	87%	62%	78%

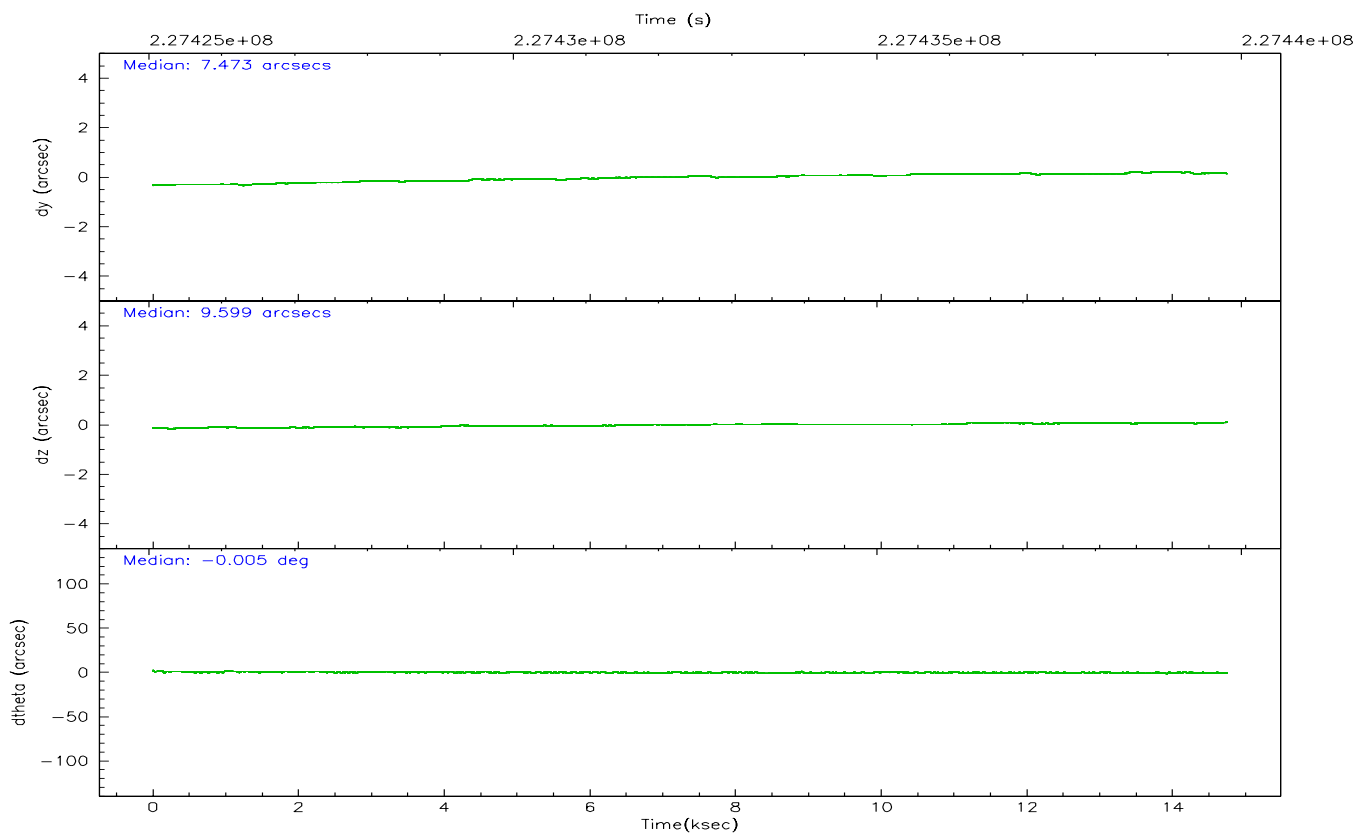
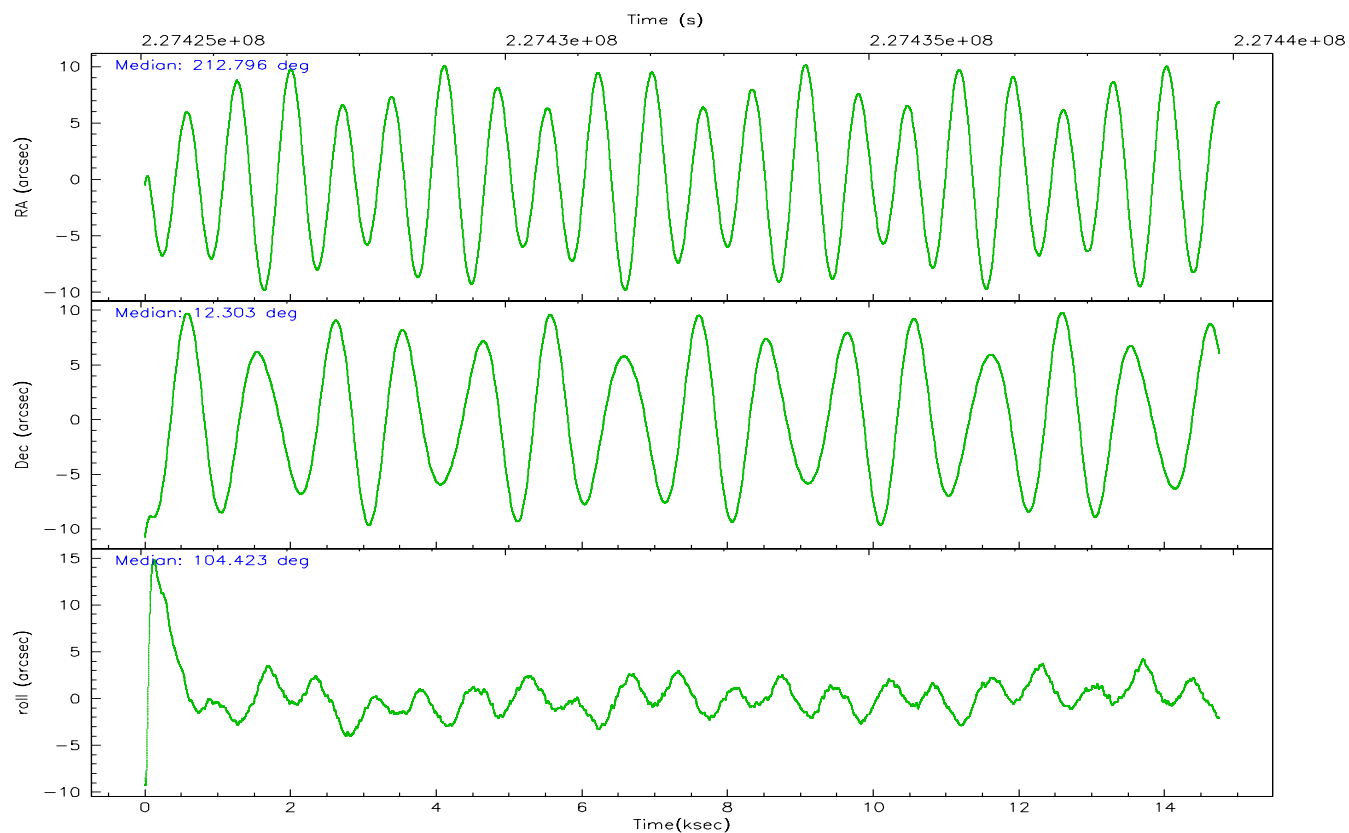
	ccd 2	ccd 3	ccd 5	ccd 6	ccd 7	ccd 8
grade 0 events	5682	5644	8427	5521	3326	9715
	5%	5%	5%	5%	2%	7%
grade 1 events	81	59	150	43	100	76
	0%	0%	0%	0%	0%	0%
grade 2 events	2650	2427	23393	2800	13994	6492
	2%	2%	13%	2%	9%	4%
grade 3 events	1208	1251	1653	1222	2633	2948
	1%	1%	0%	1%	1%	2%
grade 4 events	1157	1202	1505	1169	2591	2870
	1%	1%	0%	1%	1%	2%
grade 5 events	4524	4870	8336	5219	9250	6511
	4%	4%	4%	4%	6%	4%
grade 6 events	2182	2185	40505	2647	33616	7329
	1%	2%	24%	2%	22%	5%
grade 7 events	92182	85159	83642	89647	82351	100513
	84%	82%	49%	82%	55%	73%

## 2.2 Compared Parameters

Parameter	Planned	Actual	Parameter	Planned	Actual
Instrument	ACIS	ACIS	Obspar format version number	6	6
Detector	ACIS-235678	ACIS-235678	Obspar file type	PREDICTED	ACTUAL
Grating	NONE	NONE	Obspar update status	NONE	UPDATED
Data mode	FAINT	FAINT	On-chip summing requested	N	N
Observation mode	POINTING	POINTING	Subarray requested	NONE	NONE
Pointing RA	212.816108	212.7963089014822	Alternating exposures requested	N	N
Pointing Dec	12.284153	12.3033179600475	Primary exposure time	0.000000	3.2
Pointing Roll	104.268787	104.4296139890825			
SIM focus pos (mm)	-0.684267	-0.6828225247311905			
SIM defocus (mm)	0	0.001444936568705701			
SIM translation stage pos (mm)	-190.132523	-190.1425803651734			
SIM translation stage offset (mm)	0	0.01005778216563158			
Observation start time	227425307.184000	227424313.09335			
Observation start date	2005-03-17T05:40:43	2005-03-17T05:25:13			
Observation end time	227439807.184000	227440408.66908			
Observation end date	2005-03-17T09:42:23	2005-03-17T09:53:28			
Read mode	TIMED	TIMED			

## 2.3 Aspect





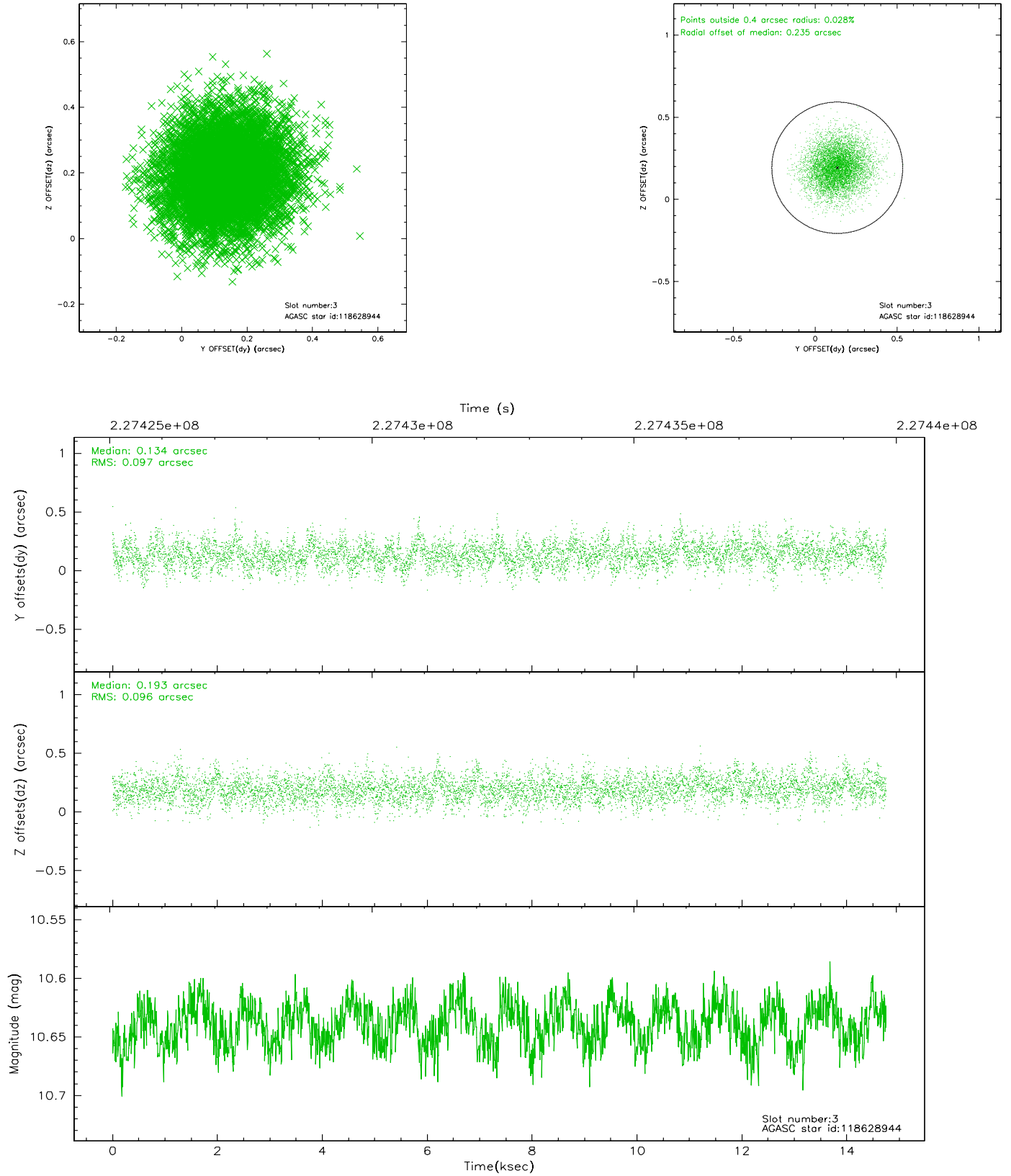
### Slot Statistics

slot	status	id	mag	n_pts	med_dy	med_dz	dr1	dr2	ra	dec	mean_y	mean_z
0	FID	ACIS-S-2	7.10	3598	-0.025	-0.015	0.011	0.017	0.000000	0.000000	-760.20	-1730.80
1	FID	ACIS-S-4	7.20	3598	0.059	0.017	0.011	0.018	0.000000	0.000000	2152.98	177.45
2	FID	ACIS-S-5	7.23	3598	-0.064	0.007	0.010	0.017	0.000000	0.000000	-1812.72	171.39
3	GUIDE	118628944	10.64	7184	0.134	0.193	0.146	0.236	213.433124	11.875502	-1958.57	-1744.80
4	GUIDE	118631064	9.02	7191	-0.022	-0.153	0.090	0.144	212.287444	12.244527	321.93	1836.86
5	GUIDE	119021896	9.51	7189	-0.075	-0.119	0.097	0.155	212.526410	12.506556	1027.85	790.09
6	GUIDE	119022488	9.34	7192	-0.088	-0.064	0.096	0.156	212.245442	12.543111	1399.92	1713.33
7	GUIDE	119022824	9.66	7192	0.054	0.137	0.103	0.170	212.791020	12.549000	946.15	-148.97

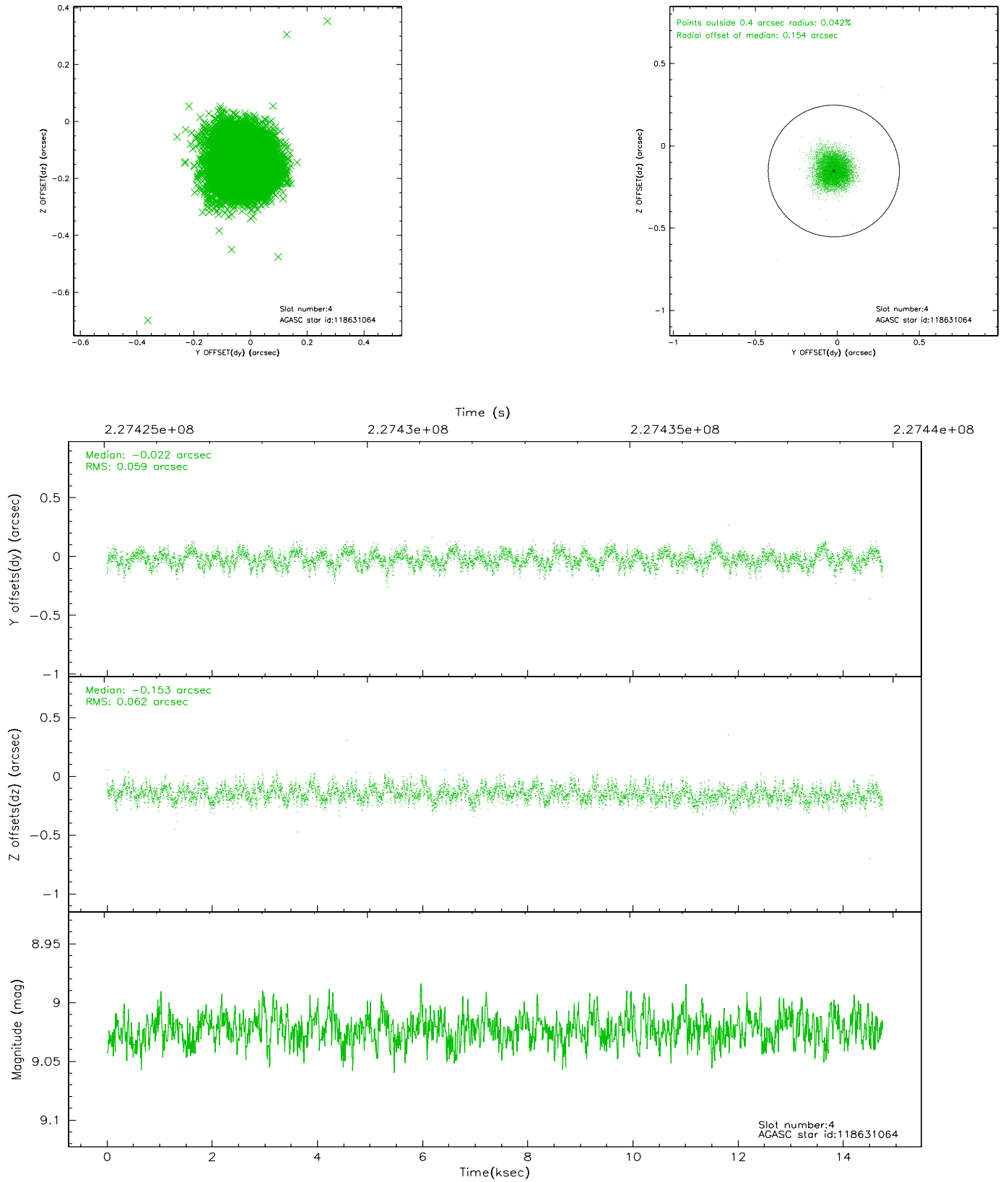


## 2.4 Star Slots

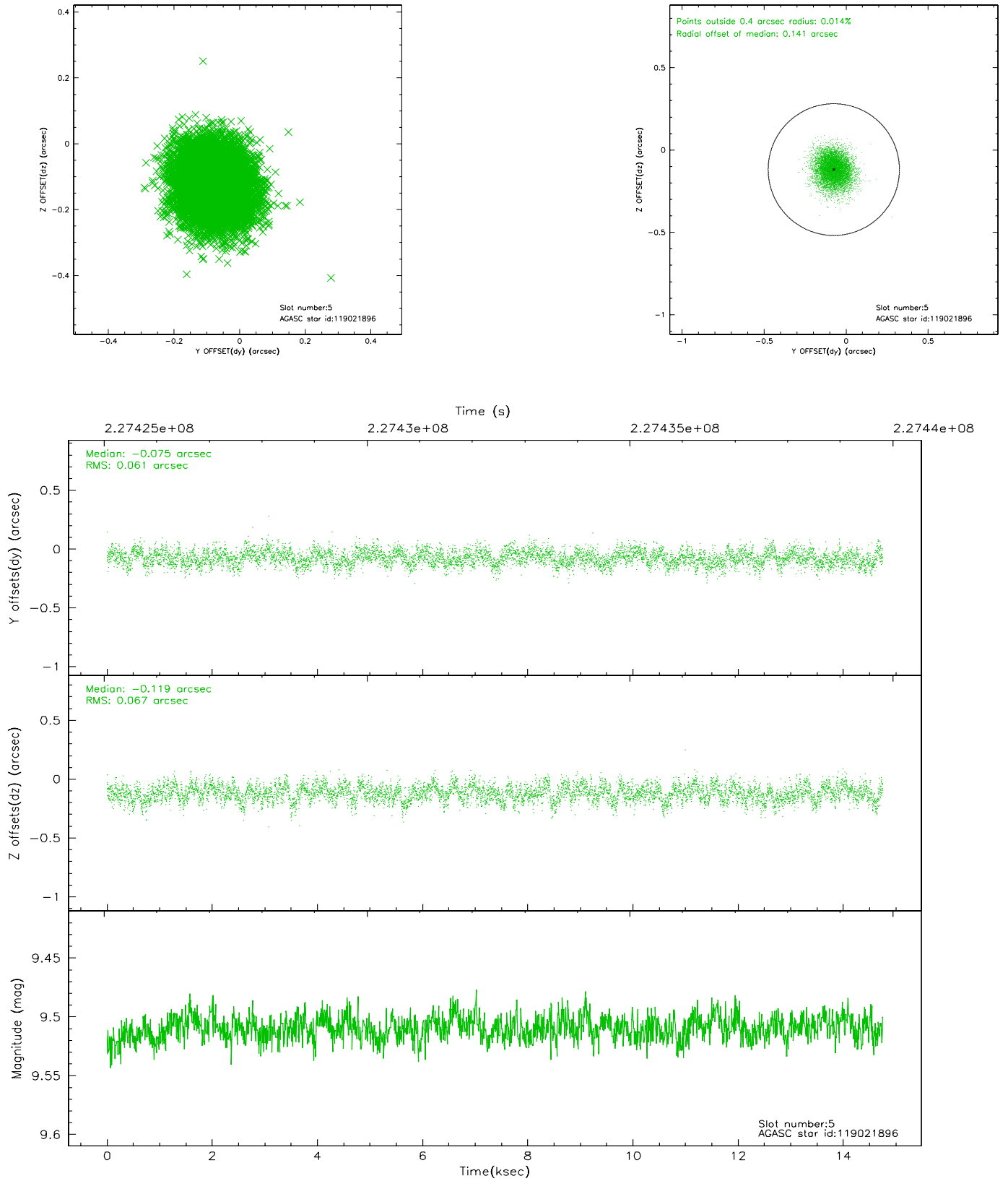
### 2.4.1 Slot 3



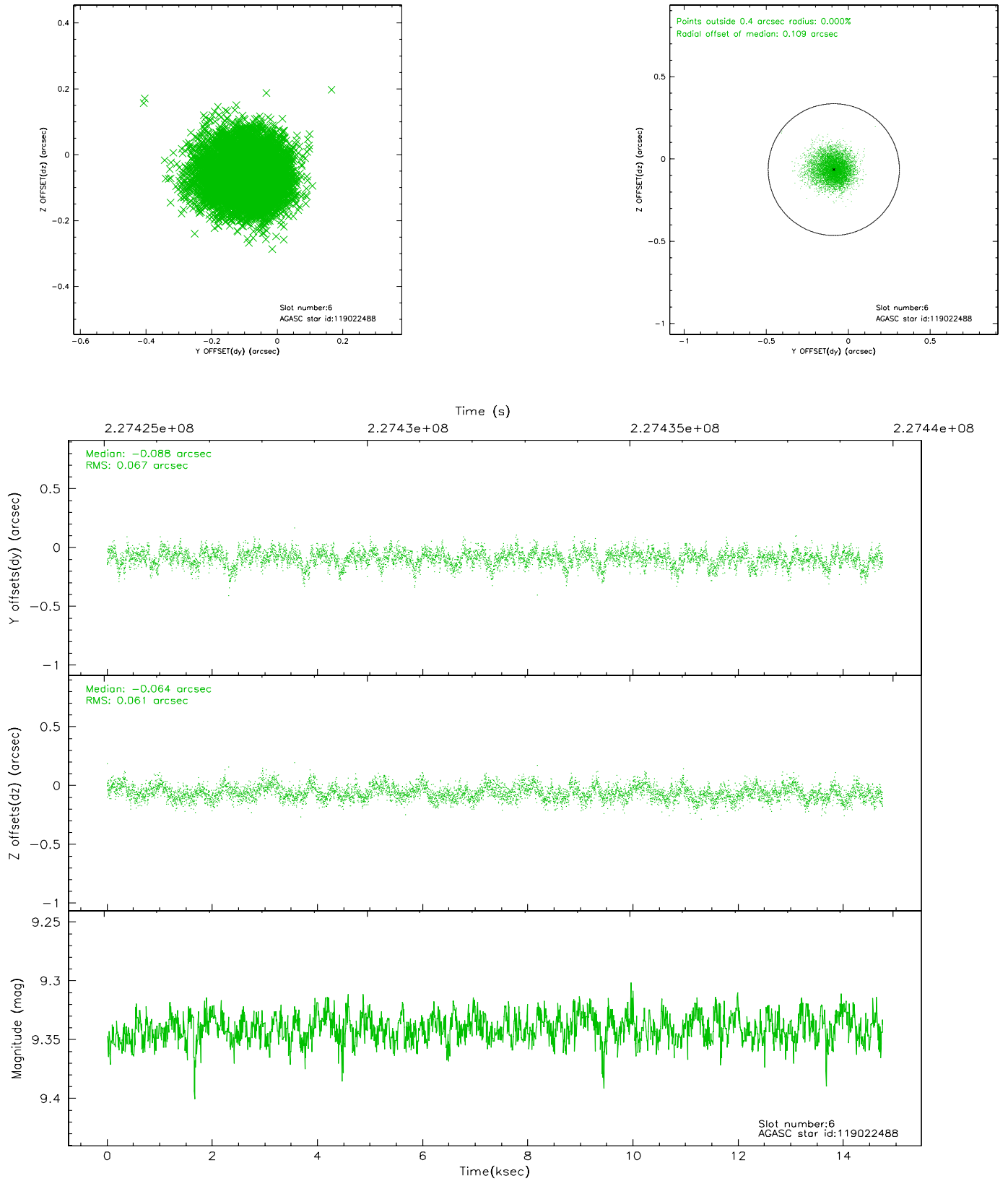
## 2.4.2 Slot 4



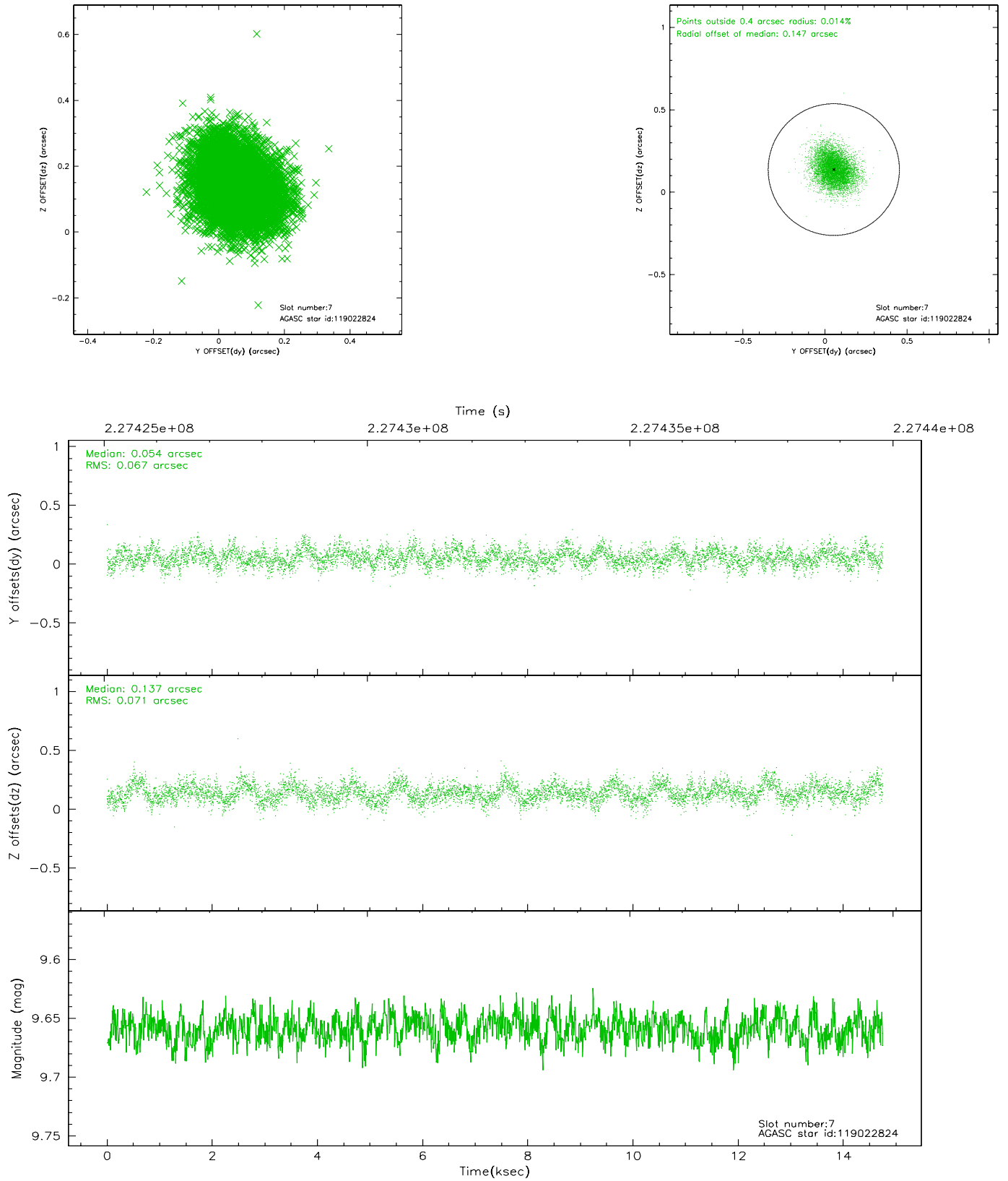
### 2.4.3 Slot 5



## 2.4.4 Slot 6

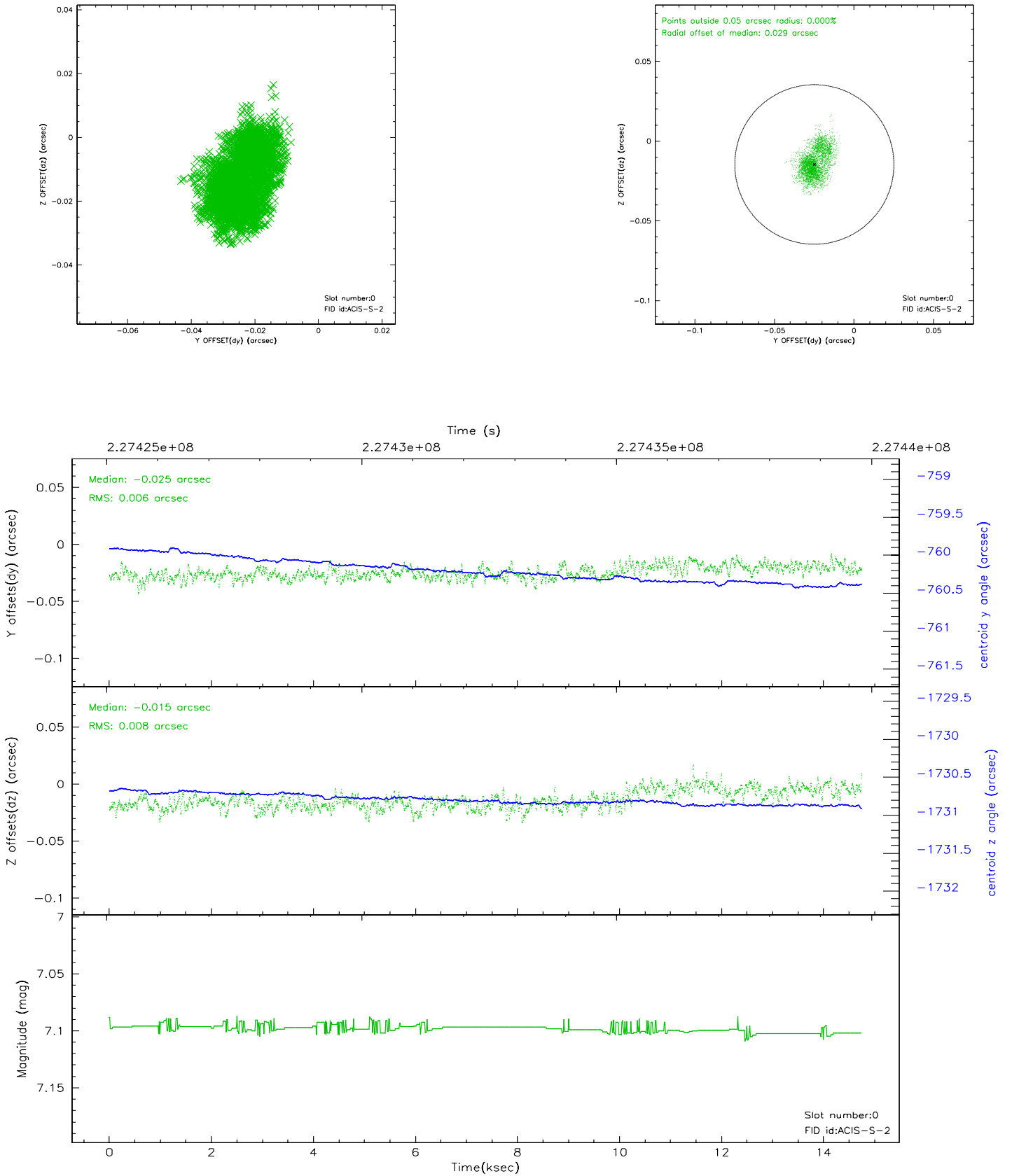


## 2.4.5 Slot 7

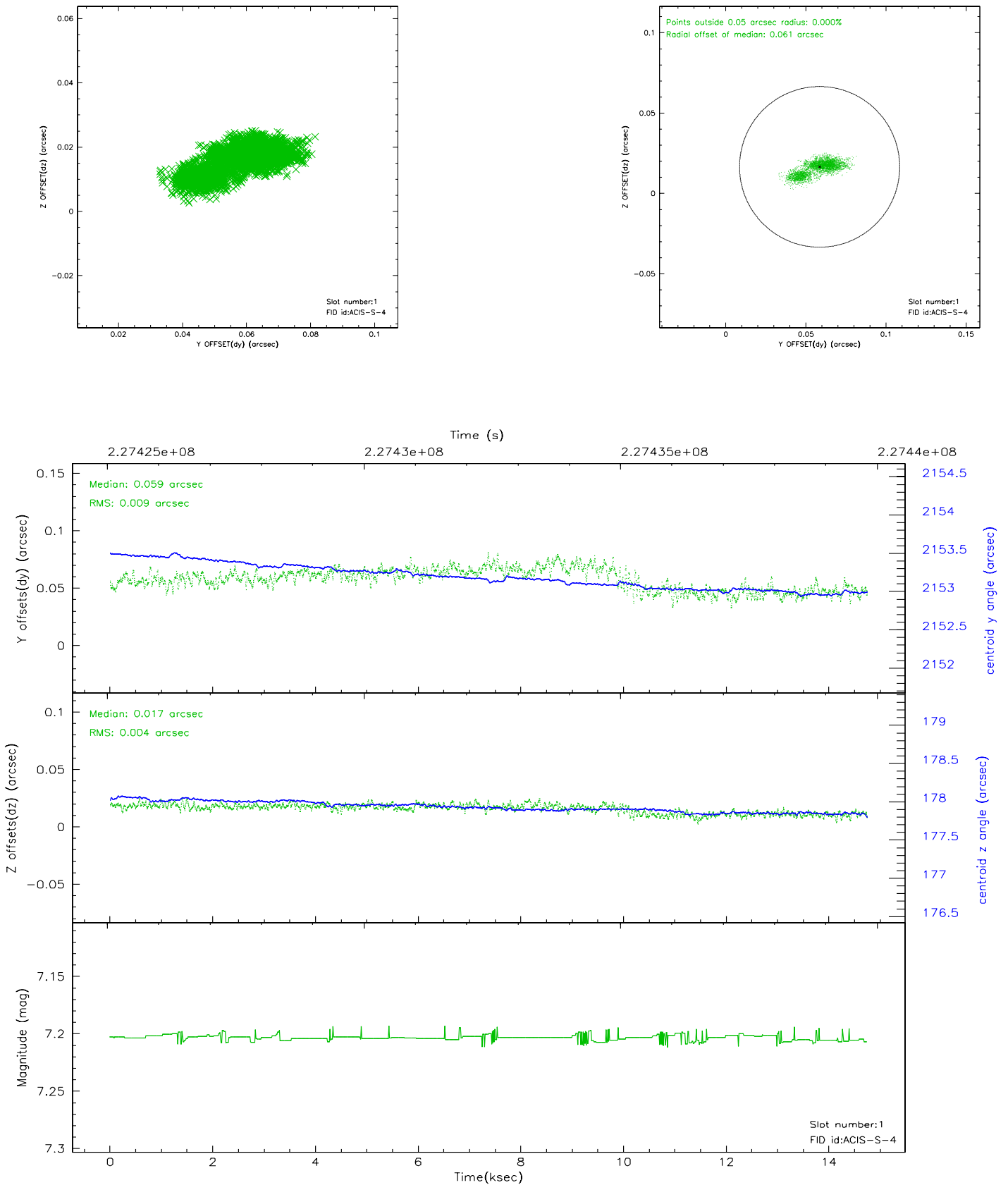


## 2.5 FID Slots

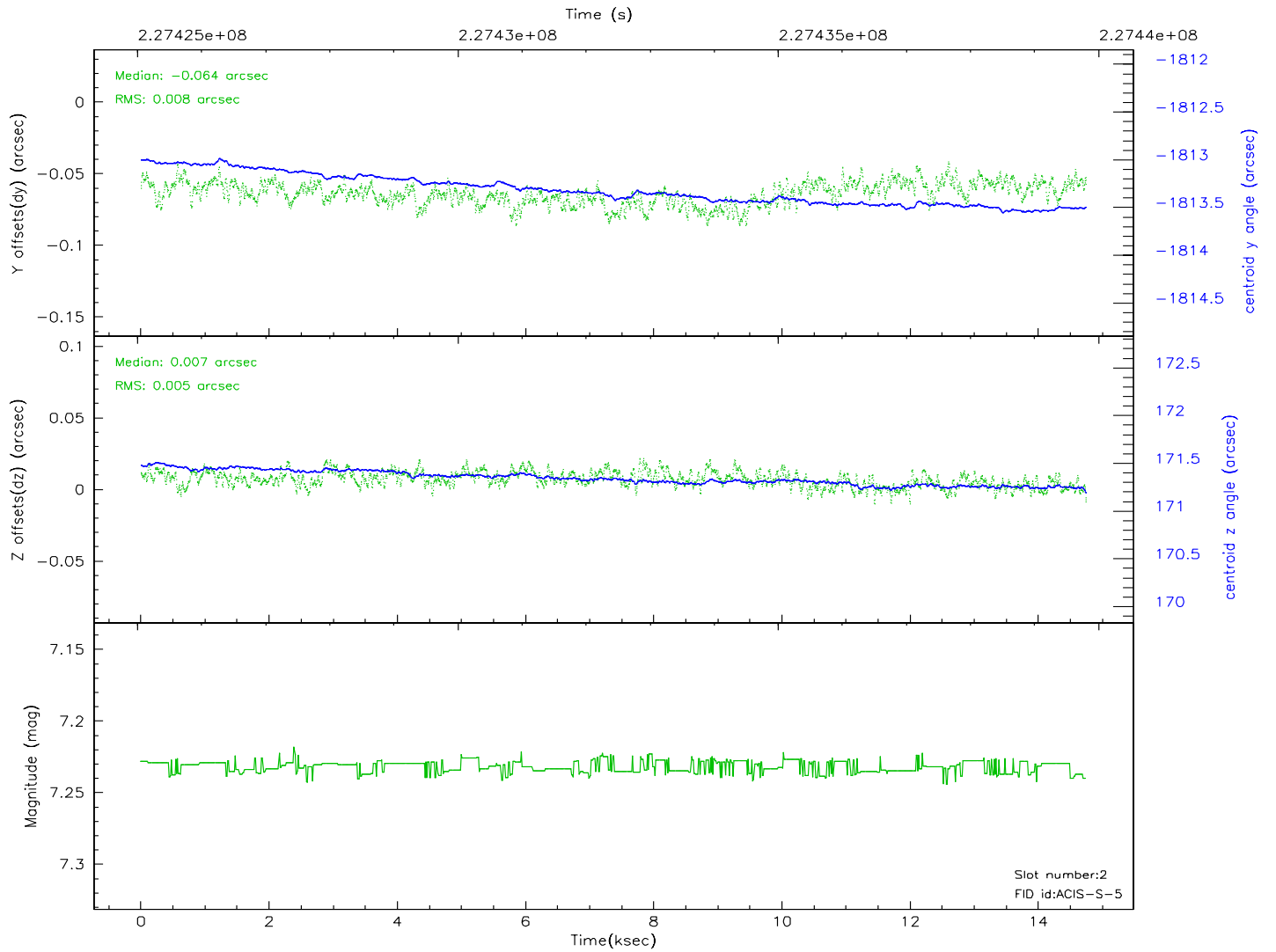
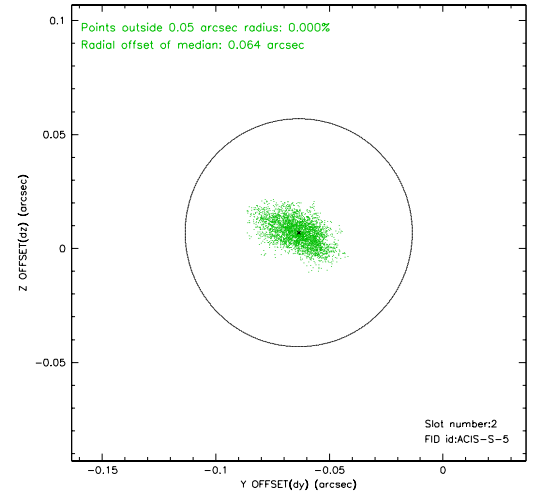
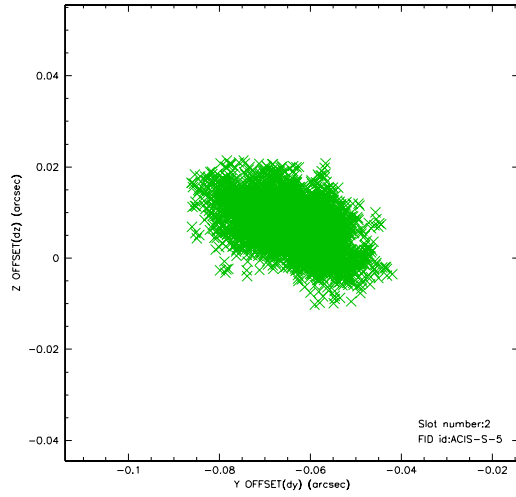
### 2.5.1 Slot 0



## 2.5.2 Slot 1

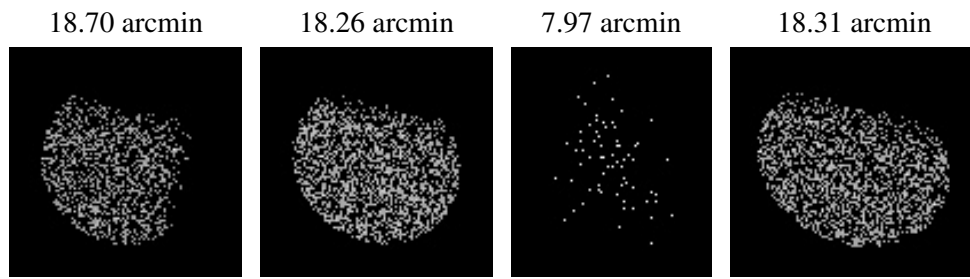


### 2.5.3 Slot 2





### 3 Point Sources



## A Summary

### A.1 Status

V&V Scientist	Beth Sundheim
V&V Date (YYYY-MM-DD)	2006.02.27
V&V Edition	1
V&V Disposition and Status	OK
V&V Charge Time	14.45759

### A.2 Comments