

V&V Reference Report

L2 ASCDS Version : 8.4.5

Observation 56051 - L2 Version 2
Chandra X-Ray Center

L2 Processing Date : Jul 2 2012

Contents

1	Front	2
2	OBI	3
2.1	OBI	3
2.1.1	Images	3
2.1.2	Bias	3
2.1.3	Parameters	4
2.1.4	Events	4
2.2	Compared Parameters	5
2.3	Star Slots	6
2.4	FID Slots	6
A	Summary	7
A.1	Status	7
A.2	Comments	7

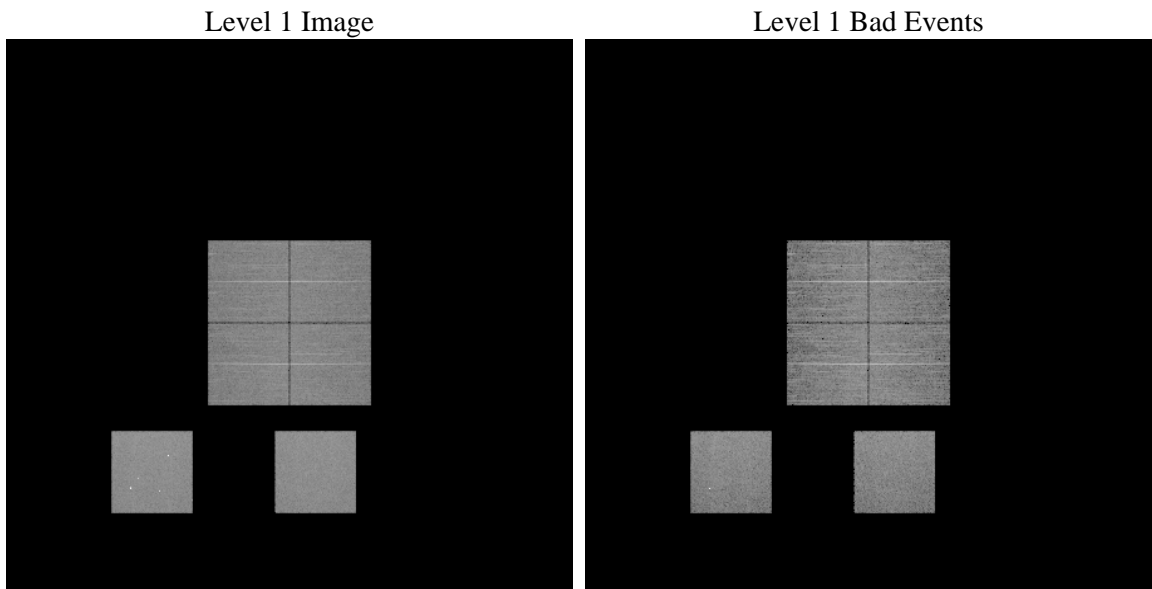
1 Front

seq_num	 	Sequence number
obs_id	56051	Observation id
title	ACIS-012357 diagnostics	Proposal title
observer	CHANDRA engineering request/realtime commanding	Principal investig
object	 	Source name
dtcycle	0	
cycle	P	events from which exps? Prim/Second/Both
ra_targ	0.0	Observer's specified target RA [deg]
dec_targ	0.0	Observer's specified target Dec [deg]
ra_nom	325.98786416515	Nominal RA [deg]
dec_nom	4.4735886322912	Nominal Dec [deg]
roll_nom	223.98373556433	Nominal Roll [deg]
revision	2	Processing version of data
ontime	8281.5999692082	Sum of GTIs [s]
livetime	8176.7333638173	Livetime [s]
ontime0	8281.5999692082	Sum of GTIs [s]
ontime1	8281.5999692082	Sum of GTIs [s]
ontime2	8281.5999692082	Sum of GTIs [s]
ontime3	8281.5999692082	Sum of GTIs [s]
ontime5	8281.5999692082	Sum of GTIs [s]
ontime7	8281.5999692082	Sum of GTIs [s]
l2events	406361	Number of level 2 events

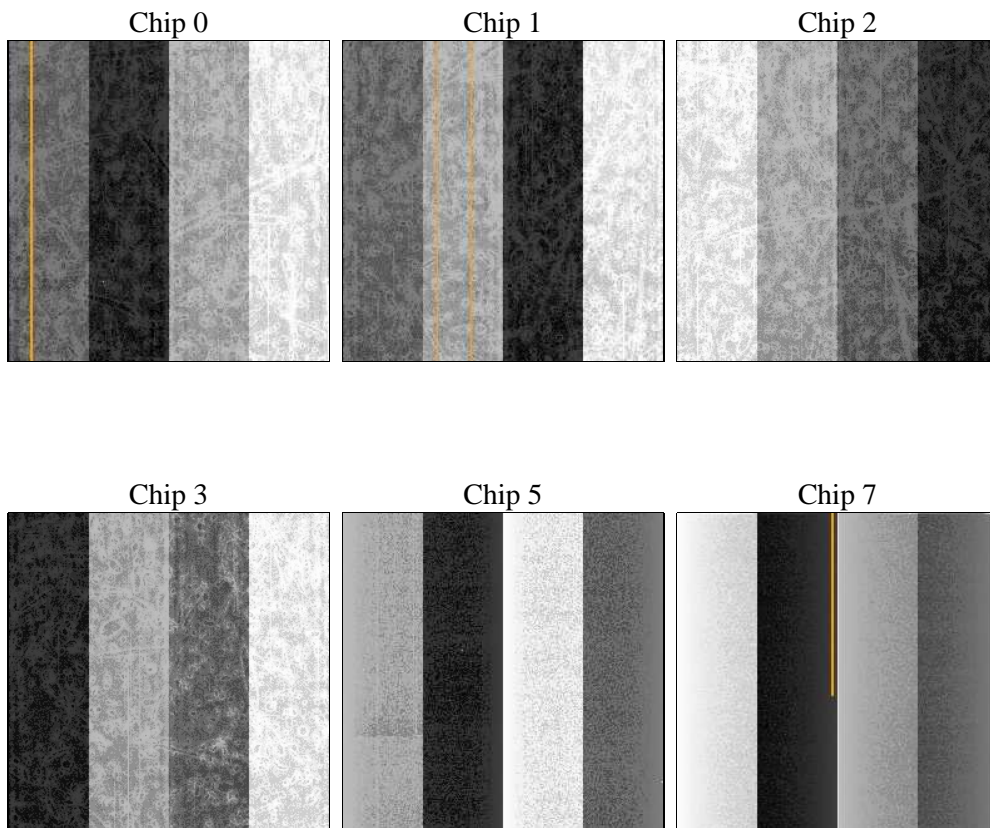
2 OBI

2.1 OBI

2.1.1 Images



2.1.2 Bias



2.1.3 Parameters

obi_num	0	Obi number	sched_exp_time	0.0	[s] Scheduled observation exposure time
ascdsver	8.4.5	Processing system revision	ontime	8281.5999692082	Sum of GTIs [s]
caldsver	4.5.0	 	ontime0	8281.5999692082	Sum of GTIs [s]
date	2012-07-02T18:15:33	Date and time of file creation	ontime1	8281.5999692082	Sum of GTIs [s]
revision	2	Processing version of data	ontime2	8281.5999692082	Sum of GTIs [s]
			ontime3	8281.5999692082	Sum of GTIs [s]
			ontime5	8281.5999692082	Sum of GTIs [s]
			ontime7	8281.5999692082	Sum of GTIs [s]
			l1events	813788	Number of level 1 events

2.1.4 Events

	ccd 0	ccd 1	ccd 2	ccd 3	ccd 5	ccd 7		ccd 0	ccd 1	ccd 2	ccd 3	ccd 5	ccd 7
level 1 events	119906	119014	123625	124500	167382	159361	grade 0 events	30944	30617	31970	32266	15915	16449
rejected events	60942	59729	64616	64741	67949	65370		25%	25%	25%	25%	9%	10%
rejected %	50%	50%	52%	52%	40%	41%	grade 1 events	203	189	237	218	328	134
								0%	0%	0%	0%	0%	0%
							grade 2 events	10783	11326	10334	10587	34199	20170
								8%	9%	8%	8%	20%	12%
							grade 3 events	4117	4030	4055	4167	4336	8650
								3%	3%	3%	3%	2%	5%
							grade 4 events	4028	3921	4072	4169	4327	8648
								3%	3%	3%	3%	2%	5%
							grade 5 events	3854	3908	3504	4302	9381	10585
								3%	3%	2%	3%	5%	6%
							grade 6 events	9092	9391	8578	8570	40656	40074
								7%	7%	6%	6%	24%	25%
							grade 7 events	56885	55632	60875	60221	58240	54651
								47%	46%	49%	48%	34%	34%

2.2 Compared Parameters

Parameter	Planned	Actual	Parameter	Planned	Actual
Instrument	ACIS	ACIS	Obspar format version number	7	7
Detector	ACIS-012357	ACIS-012357	Obspar file type	PREDICTED	ACTUAL
Grating	NONE	NONE	Obspar update status	NONE	UPDATED
Data mode	FAINT	FAINT	Number of optional ACIS chips dropped	0	0
Observation mode	SECONDARY	SECONDARY	On-chip summing requested	N	N
[deg] Pointing RA	0	325.987864165145	Subarray requested	NONE	NONE
[deg] Pointing Dec	0	4.473588632291154	Alternating exposures requested	N	N
[deg] Pointing Roll	0.0	223.9837355643324	[s] Primary exposure time	3.2	3.2
[mm] SIM focus pos	-1.429586	-1.428180813131781			
[mm] SIM defocus	0.1037507710433287	0.1051558262725154			
[mm] SIM translation stage pos	250.455976	250.466033080201			
[mm] SIM translation stage offset	0	-0.01005468664627074			
[s] Observation start time (MET)	399586157.362462	399586156.33747			
Observation start date	2010-08-30T20:09:17	2010-08-30T20:09:16			
[s] Observation end time (MET)	399608857.013625	399608855.98863			
Observation end date	2010-08-31T02:27:37	2010-08-31T02:27:35			
Read mode	TIMED	TIMED			

2.3 Star Slots

2.4 FID Slots

A Summary

A.1 Status

V&V Scientist	Jen Lauer
V&V Date (YYYY-MM-DD)	2012.07.11
V&V Edition	1
V&V Disposition and Status	OK
V&V Charge Time	8.2815999692082

A.2 Comments