

# V&V Reference Report

## L2 ASCDS Version : 8.4.5

Observation 55981 - L2 Version 2  
Chandra X-Ray Center

L2 Processing Date : Jul 4 2012

## Contents

<b>1</b>	<b>Front</b>	<b>2</b>
<b>2</b>	<b>OBI</b>	<b>3</b>
2.1	OBI . . . . .	3
2.1.1	Images . . . . .	3
2.1.2	Bias . . . . .	3
2.1.3	Parameters . . . . .	4
2.1.4	Events . . . . .	4
2.2	Compared Parameters . . . . .	5
2.3	Star Slots . . . . .	6
2.4	FID Slots . . . . .	6
<b>A</b>	<b>Summary</b>	<b>7</b>
A.1	Status . . . . .	7
A.2	Comments . . . . .	7

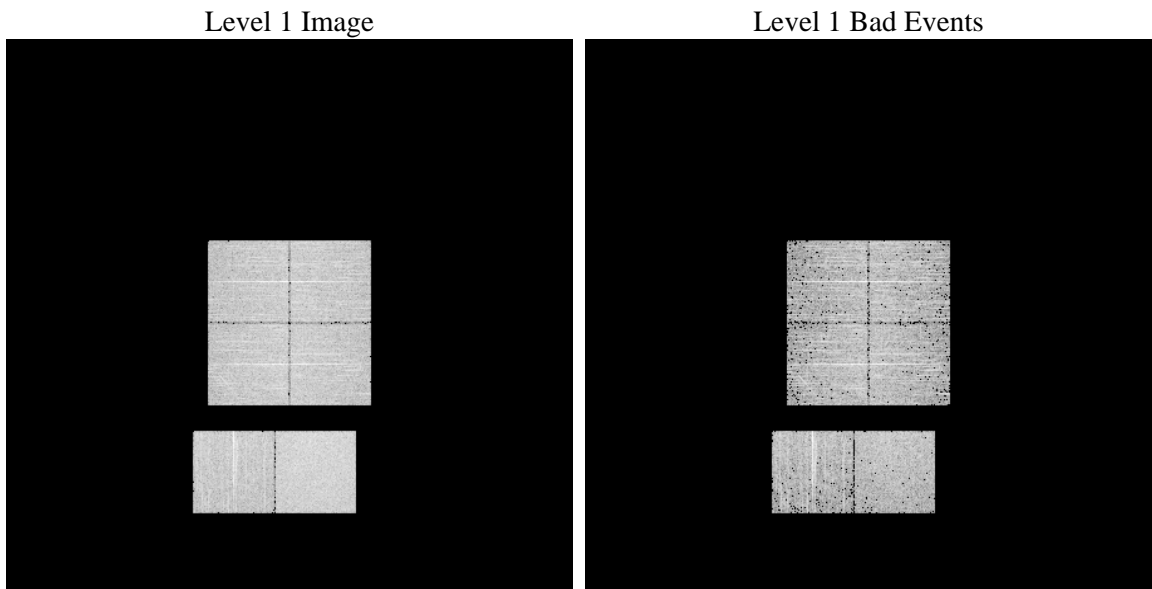
# 1 Front

seq_num	&#160	Sequence number
obs_id	55981	Observation id
title	ACIS-012367 diagnostics	Proposal title
observer	CHANDRA engineering request/realtime commanding	Principal investig
object	&#160	Source name
dtcycle	0	&#160
cycle	P	events from which exps? Prim/Second/Both
ra_targ	0.0	Observer's specified target RA [deg]
dec_targ	0.0	Observer's specified target Dec [deg]
ra_nom	27.014220754263	Nominal RA [deg]
dec_nom	-15.974586274521	Nominal Dec [deg]
roll_nom	28.964638565244	Nominal Roll [deg]
revision	2	Processing version of data
ontime	3411.1999873519	Sum of GTIs [s]
livetime	3368.005319134	Livetime [s]
ontime0	3411.1999873519	Sum of GTIs [s]
ontime1	3411.1999873519	Sum of GTIs [s]
ontime2	3407.9590067267	Sum of GTIs [s]
ontime3	3411.1999873519	Sum of GTIs [s]
ontime6	3411.1999873519	Sum of GTIs [s]
ontime7	3411.1999873519	Sum of GTIs [s]
l2events	147851	Number of level 2 events

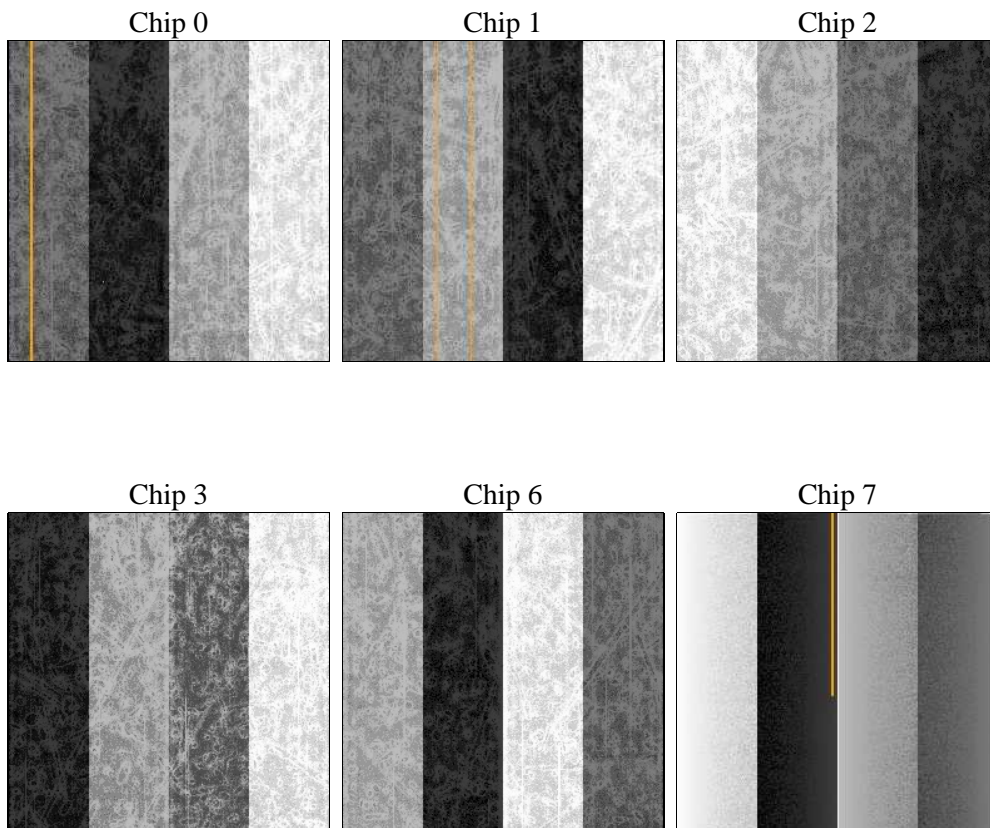
## 2 OBI

### 2.1 OBI

#### 2.1.1 Images



#### 2.1.2 Bias



### 2.1.3 Parameters

obi_num	0	Obi number	sched_exp_time	0.0	[s] Scheduled observation exposure time
ascdsver	8.4.5	Processing system revision	ontime	3411.1999873519	Sum of GTIs [s]
caldsver	4.5.0	&#160	ontime0	3411.1999873519	Sum of GTIs [s]
date	2012-07-04T19:15:30	Date and time of file creation	ontime1	3411.1999873519	Sum of GTIs [s]
revision	2	Processing version of data	ontime2	3407.9590067267	Sum of GTIs [s]
			ontime3	3411.1999873519	Sum of GTIs [s]
			ontime6	3411.1999873519	Sum of GTIs [s]
			ontime7	3411.1999873519	Sum of GTIs [s]
			l1events	320054	Number of level 1 events

### 2.1.4 Events

	ccd 0	ccd 1	ccd 2	ccd 3	ccd 6	ccd 7		ccd 0	ccd 1	ccd 2	ccd 3	ccd 6	ccd 7
level 1 events	48757	51337	51970	50747	51901	65342	grade 0 events	12383	11946	12702	12821	12436	6273
rejected events	25181	27841	28477	27106	27427	27767		25%	23%	24%	25%	23%	9%
rejected %	51%	54%	54%	53%	52%	42%	grade 1 events	65	57	92	105	77	59
								0%	0%	0%	0%	0%	0%
							grade 2 events	4333	4687	4059	4096	4620	8085
								8%	9%	7%	8%	8%	12%
							grade 3 events	1679	1615	1660	1638	1574	3275
								3%	3%	3%	3%	3%	5%
							grade 4 events	1633	1520	1632	1595	1618	3382
								3%	2%	3%	3%	3%	5%
							grade 5 events	1585	1608	1383	1757	1652	4075
								3%	3%	2%	3%	3%	6%
							grade 6 events	3548	3728	3440	3491	4226	16560
								7%	7%	6%	6%	8%	25%
							grade 7 events	23531	26176	27002	25244	25698	23633
								48%	50%	51%	49%	49%	36%

## 2.2 Compared Parameters

Parameter	Planned	Actual	Parameter	Planned	Actual
Instrument	ACIS	ACIS	Obspar format version number	7	7
Detector	ACIS-012367	ACIS-012367	Obspar file type	PREDICTED	ACTUAL
Grating	NONE	NONE	Obspar update status	NONE	UPDATED
Data mode	FAINT	FAINT	Number of optional ACIS chips dropped	0	0
Observation mode	SECONDARY	SECONDARY	On-chip summing requested	N	N
[deg] Pointing RA	0	27.01422075426296	Subarray requested	NONE	NONE
[deg] Pointing Dec	0	-15.97458627452136	Alternating exposures requested	N	N
[deg] Pointing Roll	0.0	28.96463856524387	[s] Primary exposure time	3.2	3.2
[mm] SIM focus pos	-1.429586	-1.428180813131781			
[mm] SIM defocus	0.1037507710433287	0.1051558262725154			
[mm] SIM translation stage pos	250.455976	250.466033080201			
[mm] SIM translation stage offset	0	-0.01005468664627074			
[s] Observation start time (MET)	403050095.840268	403050094.81526			
Observation start date	2010-10-09T22:21:36	2010-10-09T22:21:34			
[s] Observation end time (MET)	403055407.390542	403055406.36554			
Observation end date	2010-10-09T23:50:07	2010-10-09T23:50:06			
Read mode	TIMED	TIMED			

## 2.3 Star Slots

## 2.4 FID Slots

## A Summary

### A.1 Status

V&V Scientist	Beth Sundheim
V&V Date (YYYY-MM-DD)	2012.07.13
V&V Edition	1
V&V Disposition and Status	OK
V&V Charge Time	3.4111999873519

### A.2 Comments