

V&V Reference Report

L2 ASCDS Version : 8.4.3

Observation 55731 - L2 Version 2
Chandra X-Ray Center

L2 Processing Date : Feb 2 2012

Contents

1	Front	2
2	OBI	3
2.1	OBI	3
2.1.1	Images	3
2.1.2	Bias	3
2.1.3	Parameters	4
2.1.4	Events	4
2.2	Compared Parameters	5
2.3	Star Slots	6
2.4	FID Slots	6
A	Summary	7
A.1	Status	7
A.2	Comments	7

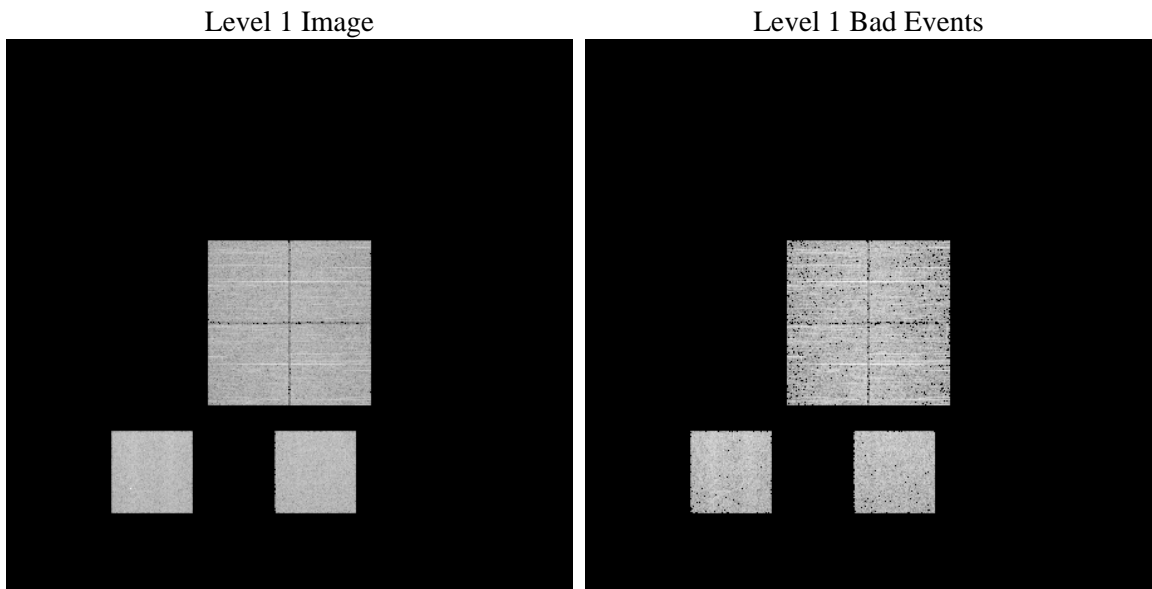
1 Front

seq_num	 	Sequence number
obs_id	55731	Observation id
title	ACIS-012357 diagnostics	Proposal title
observer	CHANDRA engineering request/realtime commanding	Principal investig
object	 	Source name
dtcycle	0	
cycle	P	events from which exps? Prim/Second/Both
ra_targ	0.0	Observer's specified target RA [deg]
dec_targ	0.0	Observer's specified target Dec [deg]
ra_nom	103.3288245022	Nominal RA [deg]
dec_nom	-0.49904831895386	Nominal Dec [deg]
roll_nom	329.07441207409	Nominal Roll [deg]
revision	2	Processing version of data
ontime	3278.8095106483	Sum of GTIs [s]
livetime	3237.2912503624	Livetime [s]
ontime0	3278.768470645	Sum of GTIs [s]
ontime1	3278.7274306417	Sum of GTIs [s]
ontime2	3278.6863906384	Sum of GTIs [s]
ontime3	3278.8505506516	Sum of GTIs [s]
ontime5	3278.6453506351	Sum of GTIs [s]
ontime7	3278.8095106483	Sum of GTIs [s]
l2events	142470	Number of level 2 events

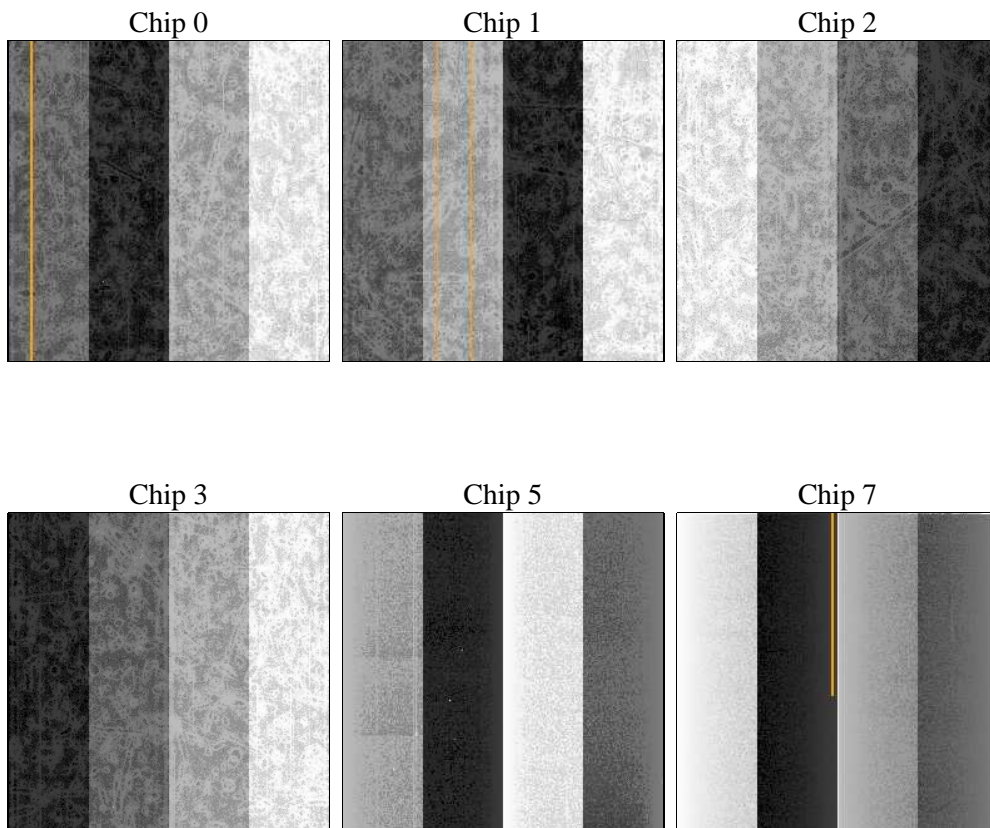
2 OBI

2.1 OBI

2.1.1 Images



2.1.2 Bias



2.1.3 Parameters

obi_num	0	Obi number	sched_exp_time	0.0	[s] Scheduled observation exposure time
ascdsver	8.4.3	Processing system revision	ontime	3278.8095106483	Sum of GTIs [s]
caldsver	4.4.7	 	ontime0	3278.768470645	Sum of GTIs [s]
date	2012-02-02T07:42:52	Date and time of file creation	ontime1	3278.7274306417	Sum of GTIs [s]
revision	2	Processing version of data	ontime2	3278.6863906384	Sum of GTIs [s]
			ontime3	3278.8505506516	Sum of GTIs [s]
			ontime5	3278.6453506351	Sum of GTIs [s]
			ontime7	3278.8095106483	Sum of GTIs [s]
			l1events	303673	Number of level 1 events

2.1.4 Events

	ccd 0	ccd 1	ccd 2	ccd 3	ccd 5	ccd 7		ccd 0	ccd 1	ccd 2	ccd 3	ccd 5	ccd 7
level 1 events	45739	45656	45433	46923	61191	58731	grade 0 events	10242	9129	10755	10974	2963	5057
rejected events	25189	25008	25358	26128	26950	25718		22%	19%	23%	23%	4%	8%
rejected %	55%	54%	55%	55%	44%	43%	grade 1 events	54	54	64	57	80	31
								0%	0%	0%	0%	0%	0%
							grade 2 events	4301	5451	3589	3839	12538	7483
								9%	11%	7%	8%	20%	12%
							grade 3 events	1382	1136	1297	1414	1227	2808
								3%	2%	2%	3%	2%	4%
							grade 4 events	1271	1179	1334	1434	1101	2592
								2%	2%	2%	3%	1%	4%
							grade 5 events	1342	1261	1178	1374	2799	3620
								2%	2%	2%	2%	4%	6%
							grade 6 events	3354	3753	3100	3134	16412	15073
								7%	8%	6%	6%	26%	25%
							grade 7 events	23793	23693	24116	24697	24071	22067
								52%	51%	53%	52%	39%	37%

2.2 Compared Parameters

Parameter	Planned	Actual	Parameter	Planned	Actual
Instrument	ACIS	ACIS	Obspar format version number	7	7
Detector	ACIS-012357	ACIS-012357	Obspar file type	PREDICTED	ACTUAL
Grating	NONE	NONE	Obspar update status	NONE	UPDATED
Data mode	FAINT	FAINT	Number of optional ACIS chips dropped	0	0
Observation mode	SECONDARY	SECONDARY	On-chip summing requested	N	N
[deg] Pointing RA	0	103.328824502196	Subarray requested	NONE	NONE
[deg] Pointing Dec	0	-0.4990483189538638	Alternating exposures requested	N	N
[deg] Pointing Roll	0.0	329.0744120740926	[s] Primary exposure time	3.2	3.2
[mm] SIM focus pos	-1.429586	-1.428180813131781			
[mm] SIM defocus	0.1037507710433287	0.1051558262725154			
[mm] SIM translation stage pos	250.455976	250.466033080201			
[mm] SIM translation stage offset	0	-0.01005468664627074			
[s] Observation start time (MET)	411500509.925886	411500508.90087			
Observation start date	2011-01-15T17:41:50	2011-01-15T17:41:48			
[s] Observation end time (MET)	411506961.27622	411506960.2512			
Observation end date	2011-01-15T19:29:21	2011-01-15T19:29:20			
Read mode	TIMED	TIMED			

2.3 Star Slots

2.4 FID Slots

A Summary

A.1 Status

V&V Scientist	Joy Nichols
V&V Date (YYYY-MM-DD)	2012.02.02
V&V Edition	1
V&V Disposition and Status	OK
V&V Charge Time	3.2788095106483

A.2 Comments