

V&V Reference Report

L2 ASCDS Version : 7.6.7

Observation 5551 - L2 Version 002
Chandra X-Ray Center

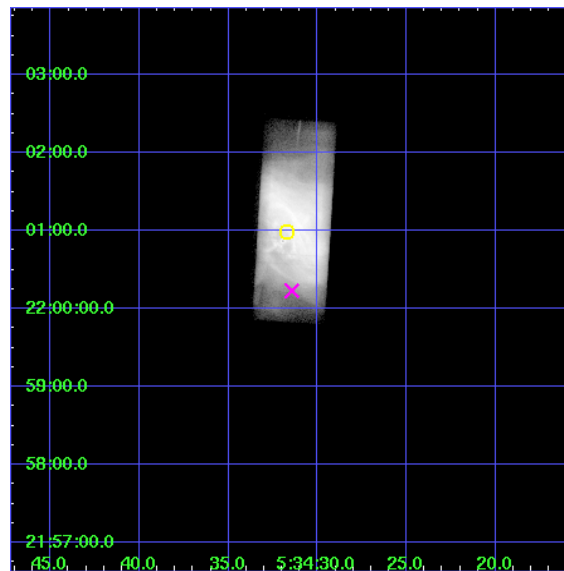
L2 Processing Date: Feb 22 2006

Contents

1	Front	2
2	OBI	3
2.1	OBI	3
2.1.1	Images	3
2.1.2	Parameters	4
2.1.3	Events	4
2.2	Compared Parameters	5
2.3	Aspect	6
2.4	Star Slots	9
2.4.1	Slot 3	9
2.4.2	Slot 4	10
2.4.3	Slot 5	11
2.4.4	Slot 6	12
2.4.5	Slot 7	13
2.5	FID Slots	14
2.5.1	Slot 0	14
2.5.2	Slot 1	15
2.5.3	Slot 2	16
3	Gratings	17
3.1	HEG Arm	17
3.2	MEG Arm	19
A	Summary	21
A.1	Status	21
A.2	Comments	21

1 Front

seq_num	500540
obs_id	5551
title	Monitoring of the Relativistic Magnetohydrodynamic Shock in the Crab Nebula
observer	Dr Koji Mori
object	The Crab Nebula
dtcycle	0
cycle	P
ra_targ	83.632083
dec_targ	22.016472
ra_nom	83.6310794837
dec_nom	22.00407896535
roll_nom	273.51630314938
revision	2
ontime	10181.700404584
livetime	8956.4570765169
ontime7	10181.700404584
l2events	2663431

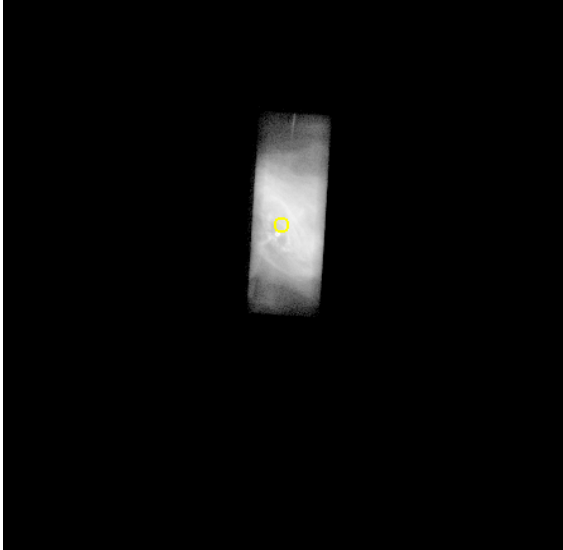


2 OBI

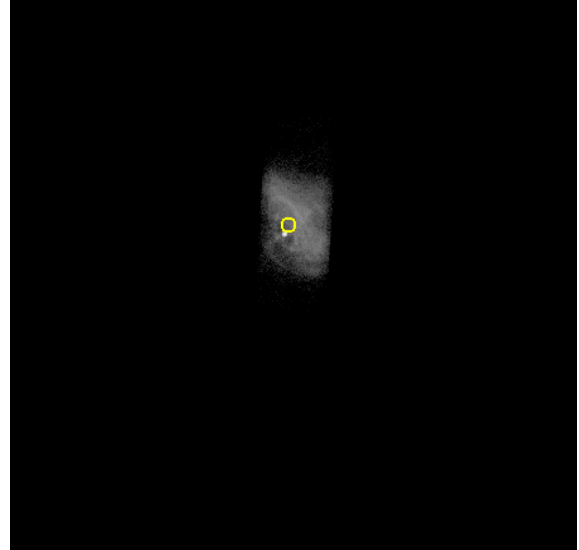
2.1 OBI

2.1.1 Images

Level 1 Image



Level 1 Bad Events



2.1.2 Parameters

obi_num	0
ascdsver	7.6.7
caldbver	3.2.1
date	2006-02-22T21:34:09
revision	2

sched_exp_time	10000.000000
ontime	10604.876439333
ontime7	10604.876439333
l1events	2820158

2.1.3 Events

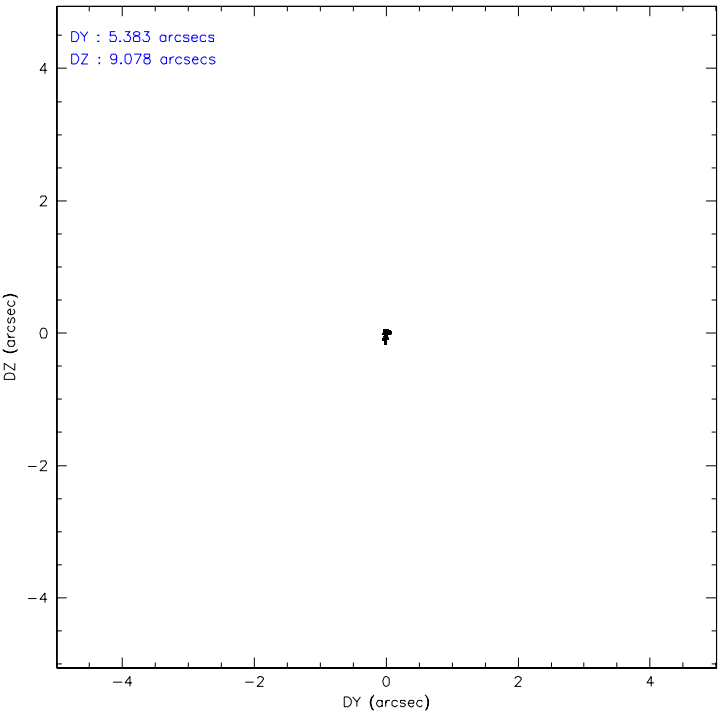
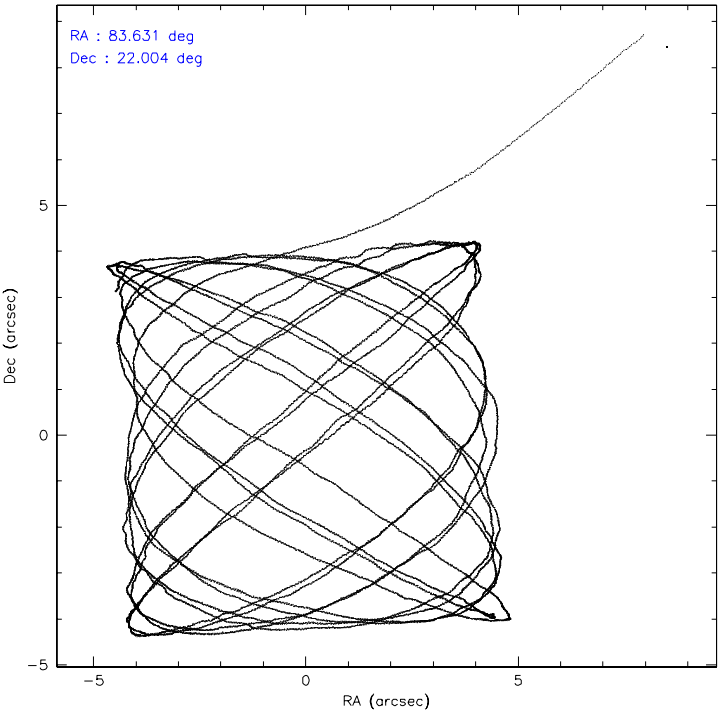
	ccd 7
level 1 events	2820158
rejected events	130017
rejected %	4%

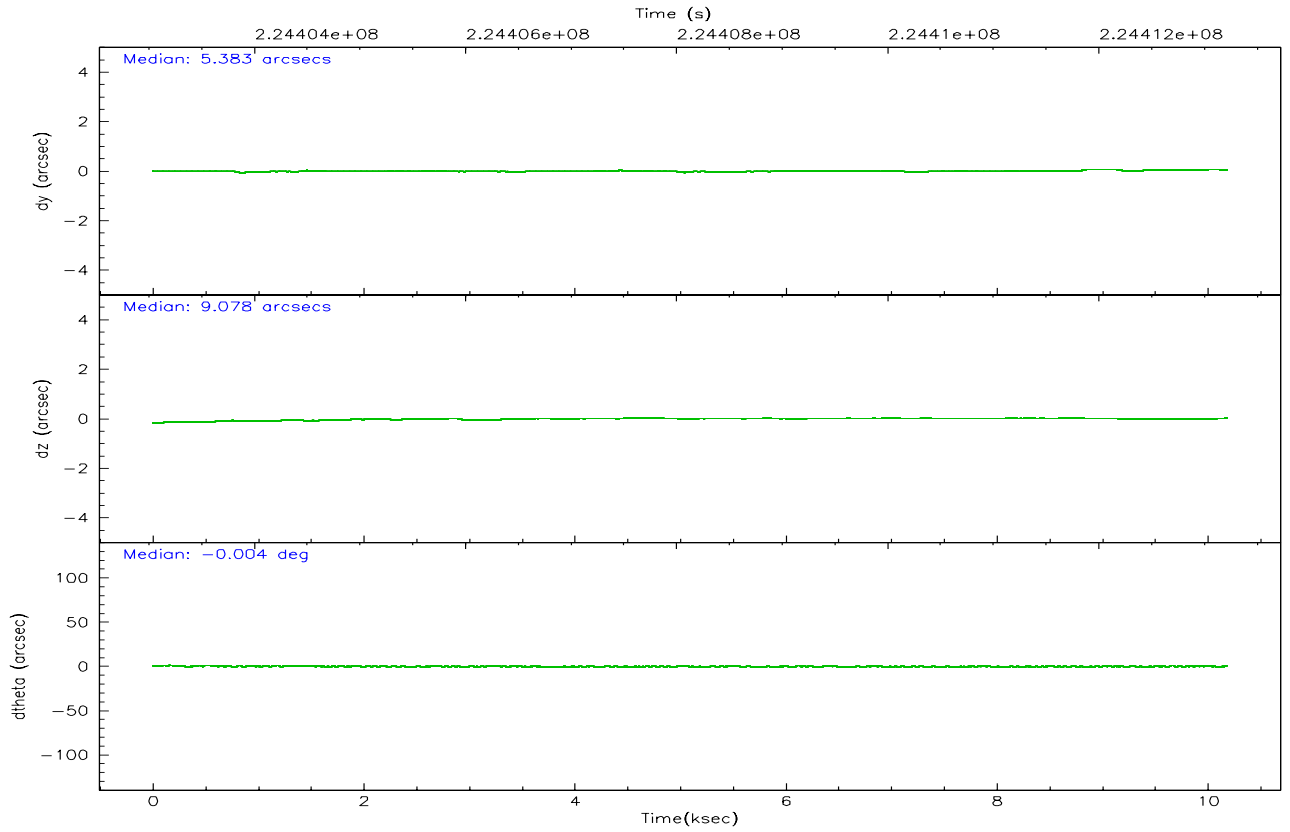
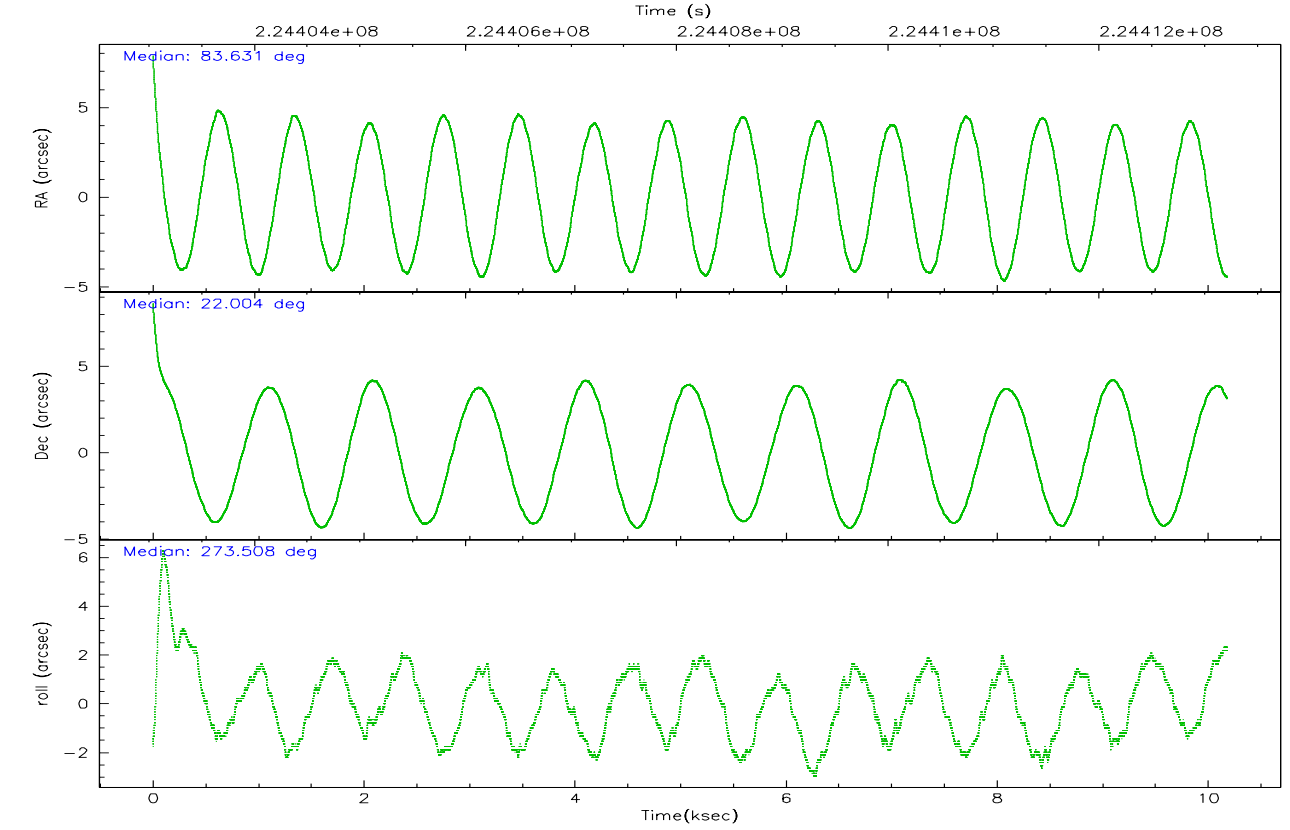
	ccd 7
grade 0 events	554722
	19%
grade 1 events	10749
	0%
grade 2 events	694139
	24%
grade 3 events	310346
	11%
grade 4 events	296964
	10%
grade 5 events	42913
	1%
grade 6 events	860333
	30%
grade 7 events	49992
	1%

2.2 Compared Parameters

Parameter	Planned	Actual	Parameter	Planned	Actual
Instrument	ACIS	ACIS	Obspar format version number	6	6
Detector	ACIS-7	ACIS-7	Obspar file type	PREDICTED	ACTUAL
Grating	HETG	HETG	Obspar update status	NONE	UPDATED
Data mode	GRADED	GRADED	On-chip summing requested	N	N
Observation mode	POINTING	POINTING	Subarray requested	CUSTOM	CUSTOM
Pointing RA	83.614515	83.63107948369975	Subarray start row	127	127
Pointing Dec	22.026534	22.00407896534975	Subarray row count	101	101
Pointing Roll	273.365885	273.5163031493814	Alternating exposures requested	N	N
Window start time	224121664.184000	224121664.184000	Primary exposure time	0.000000	0.3
Window stop time	224726464.184000	224726464.184000			
SIM focus pos (mm)	-0.684267	-0.6828225247311905			
SIM defocus (mm)	0	0.001444936568705701			
SIM translation stage pos (mm)	-182.132523	-182.1344861297048			
SIM translation stage offset (mm)	-8	-7.998036453302973			
Observation start time	224403221.184000	224402334.15649			
Observation start date	2005-02-10T06:12:37	2005-02-10T05:58:54			
Observation end time	224413221.184000	224414021.71952			
Observation end date	2005-02-10T08:59:17	2005-02-10T09:13:41			
Read mode	TIMED	TIMED			

2.3 Aspect



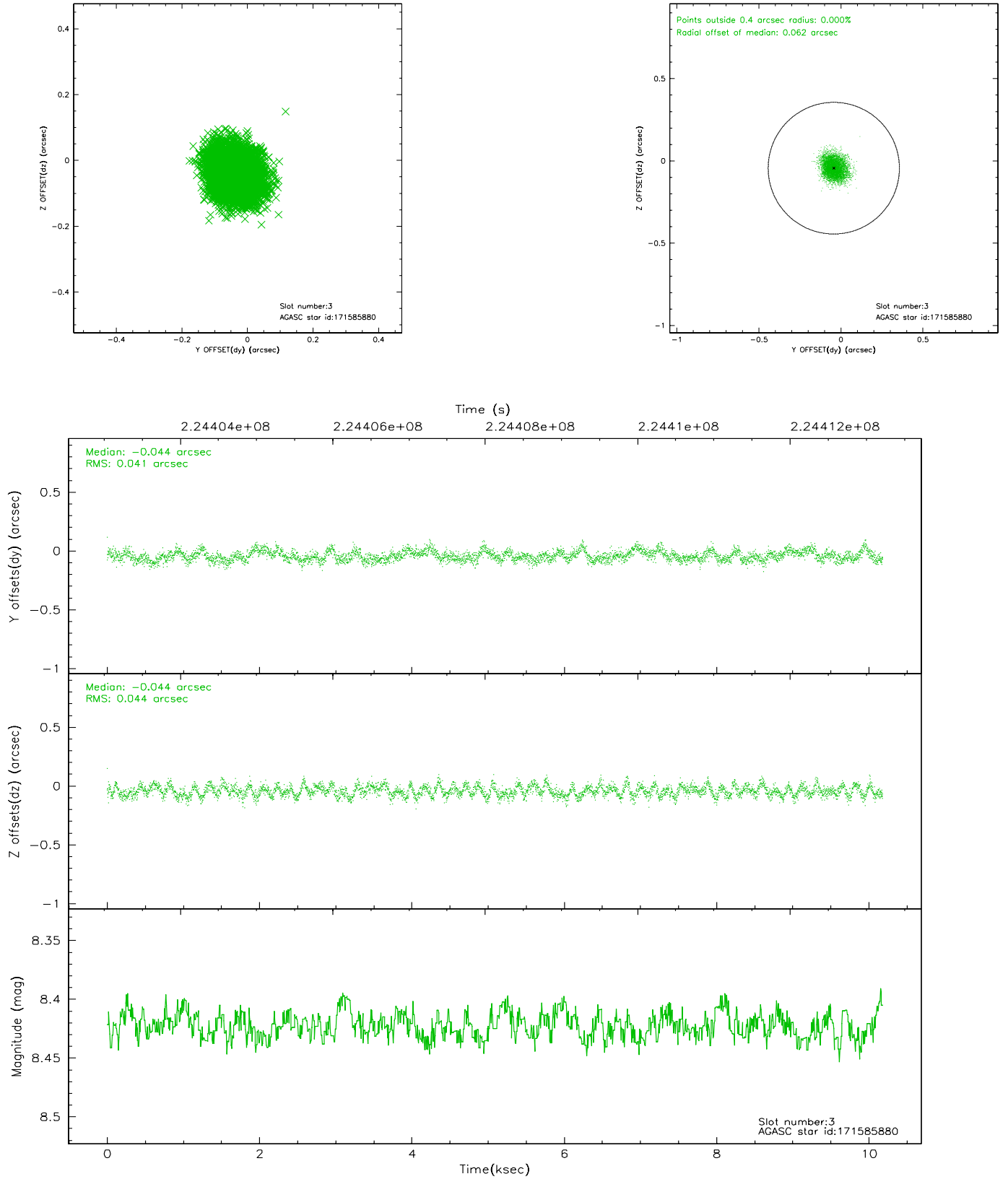


Slot Statistics

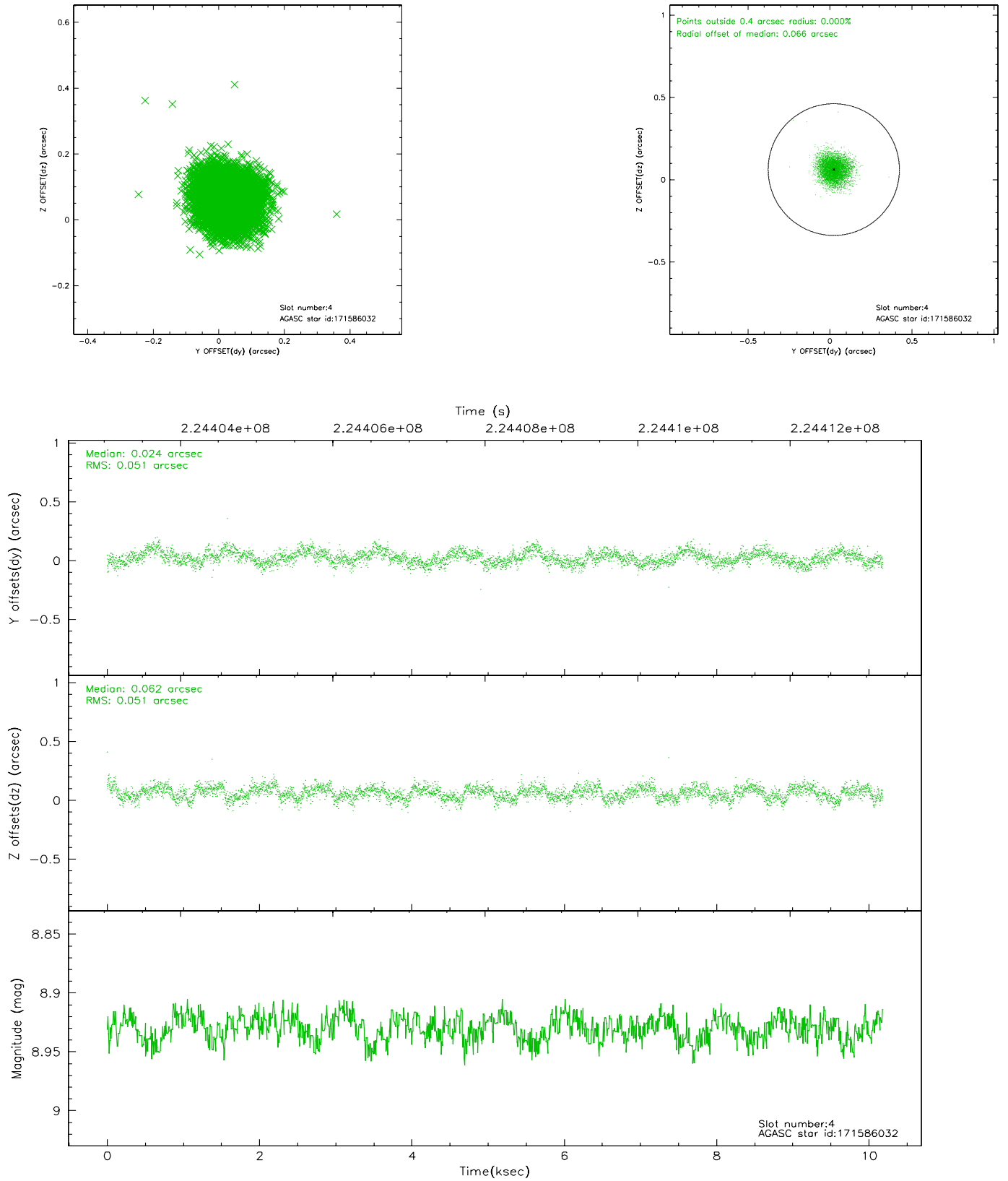
slot	status	id	mag	n_pts	med_dy	med_dz	dr1	dr2	ra	dec	mean_y	mean_z
0	FID	ACIS-S-2	7.09	2484	-0.068	-0.090	0.006	0.011	0.000000	0.000000	-757.59	-1895.14
1	FID	ACIS-S-4	7.18	2484	0.132	0.057	0.005	0.009	0.000000	0.000000	2155.66	12.86
2	FID	ACIS-S-5	7.23	2484	-0.095	0.041	0.006	0.010	0.000000	0.000000	-1809.79	7.13
3	GUIDE	171585880	8.42	4966	-0.044	-0.044	0.065	0.103	83.676260	22.176319	-525.97	237.18
4	GUIDE	171586032	8.93	4968	0.024	0.062	0.077	0.122	83.950197	22.083225	-139.10	1130.17
5	GUIDE	171597832	9.17	4965	0.150	-0.104	0.107	0.173	83.183230	21.366702	2285.14	-1582.25
6	GUIDE	171721904	9.22	4965	0.052	0.118	0.090	0.145	84.272676	22.116922	-200.14	2210.55
7	GUIDE	243941560	8.29	4965	-0.185	-0.026	0.062	0.095	83.733264	22.568598	-1924.90	508.90

2.4 Star Slots

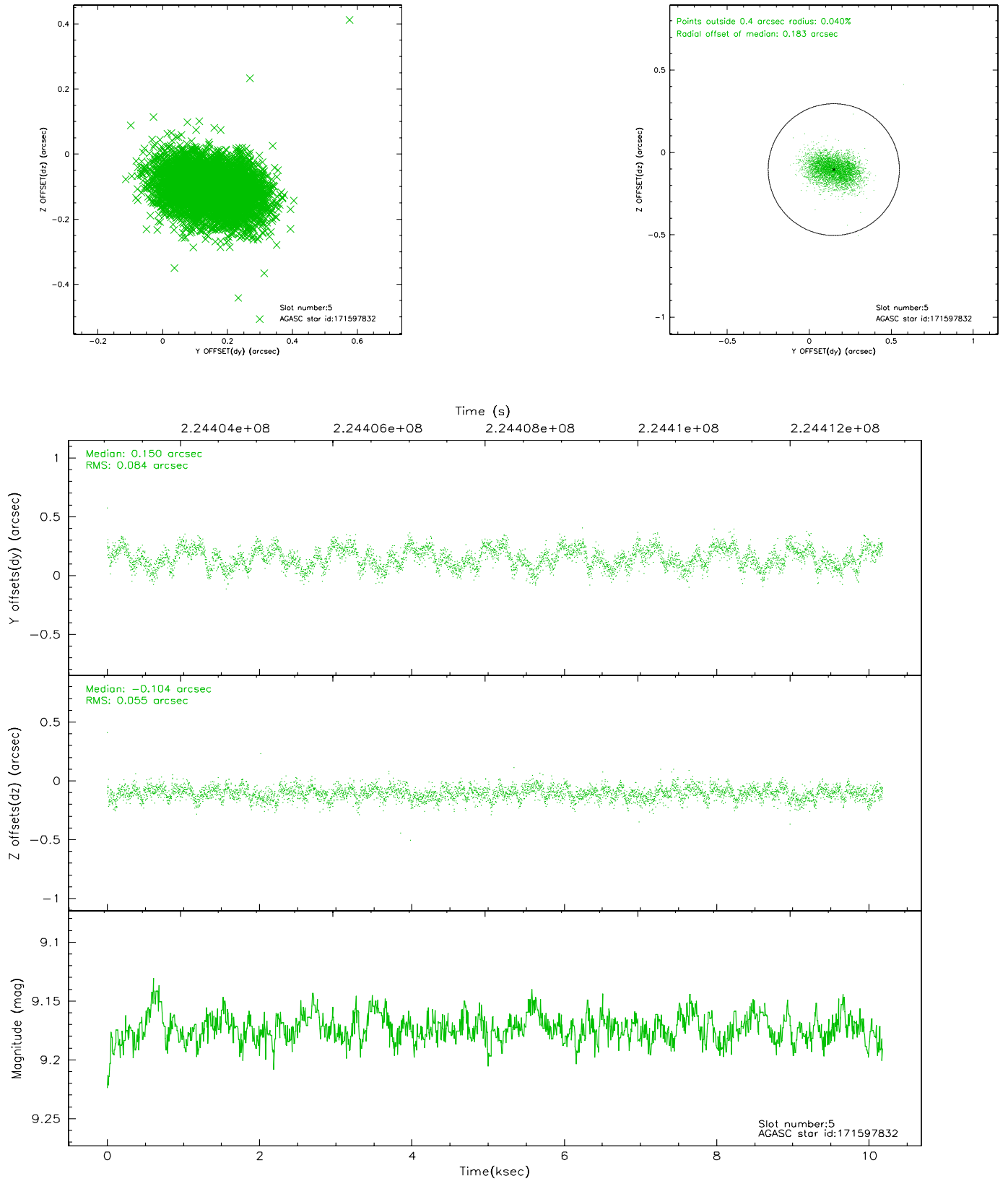
2.4.1 Slot 3



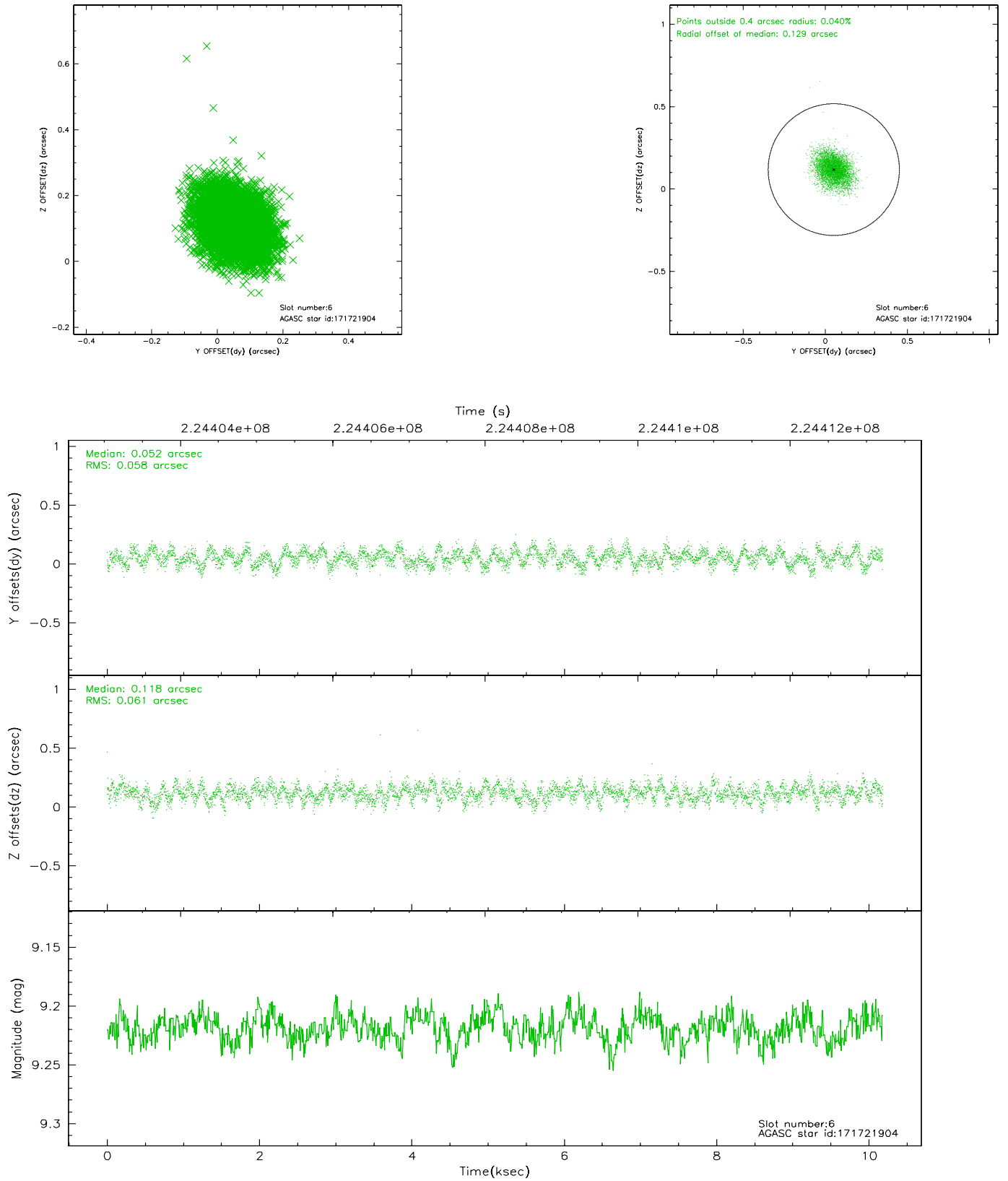
2.4.2 Slot 4



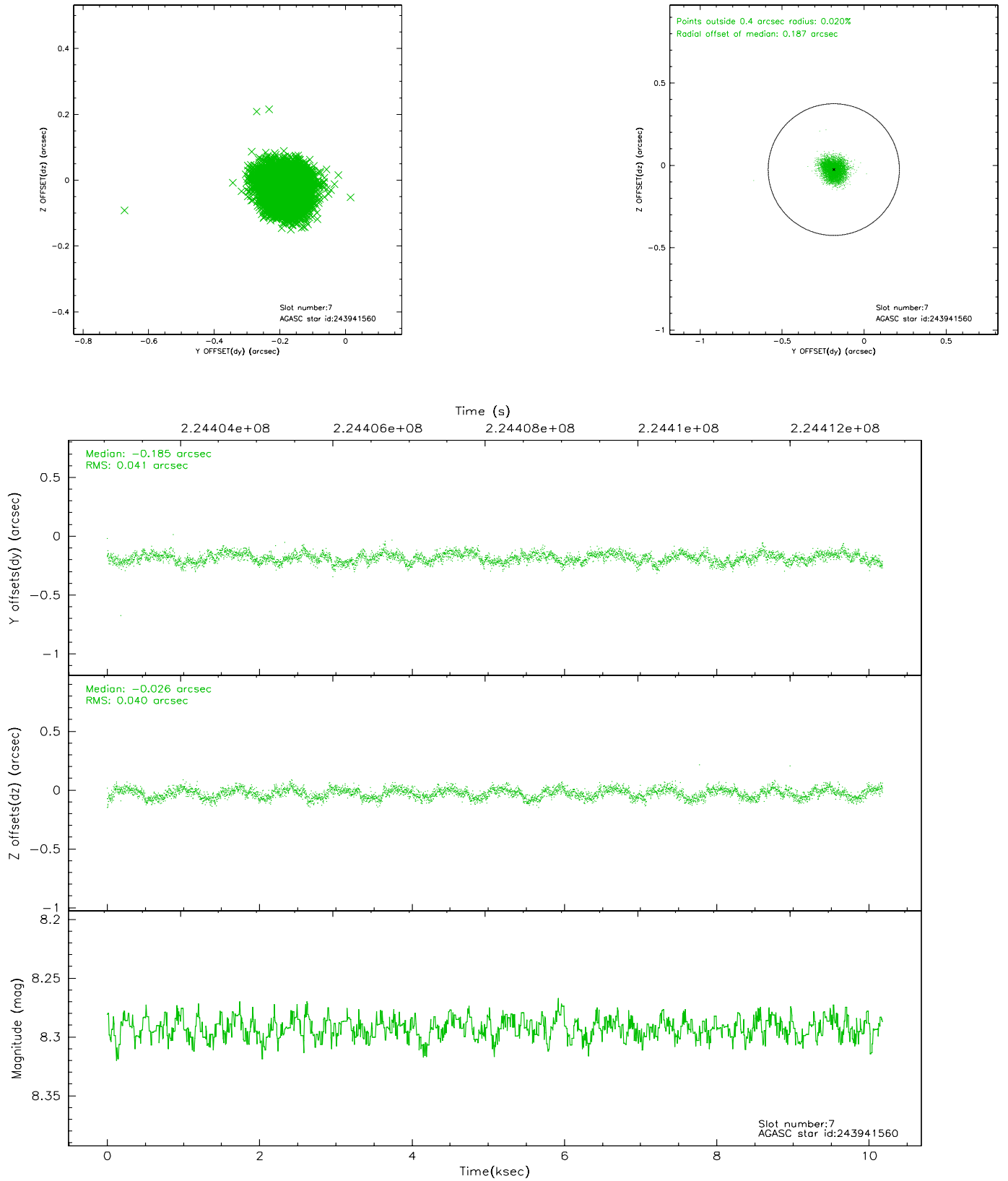
2.4.3 Slot 5



2.4.4 Slot 6

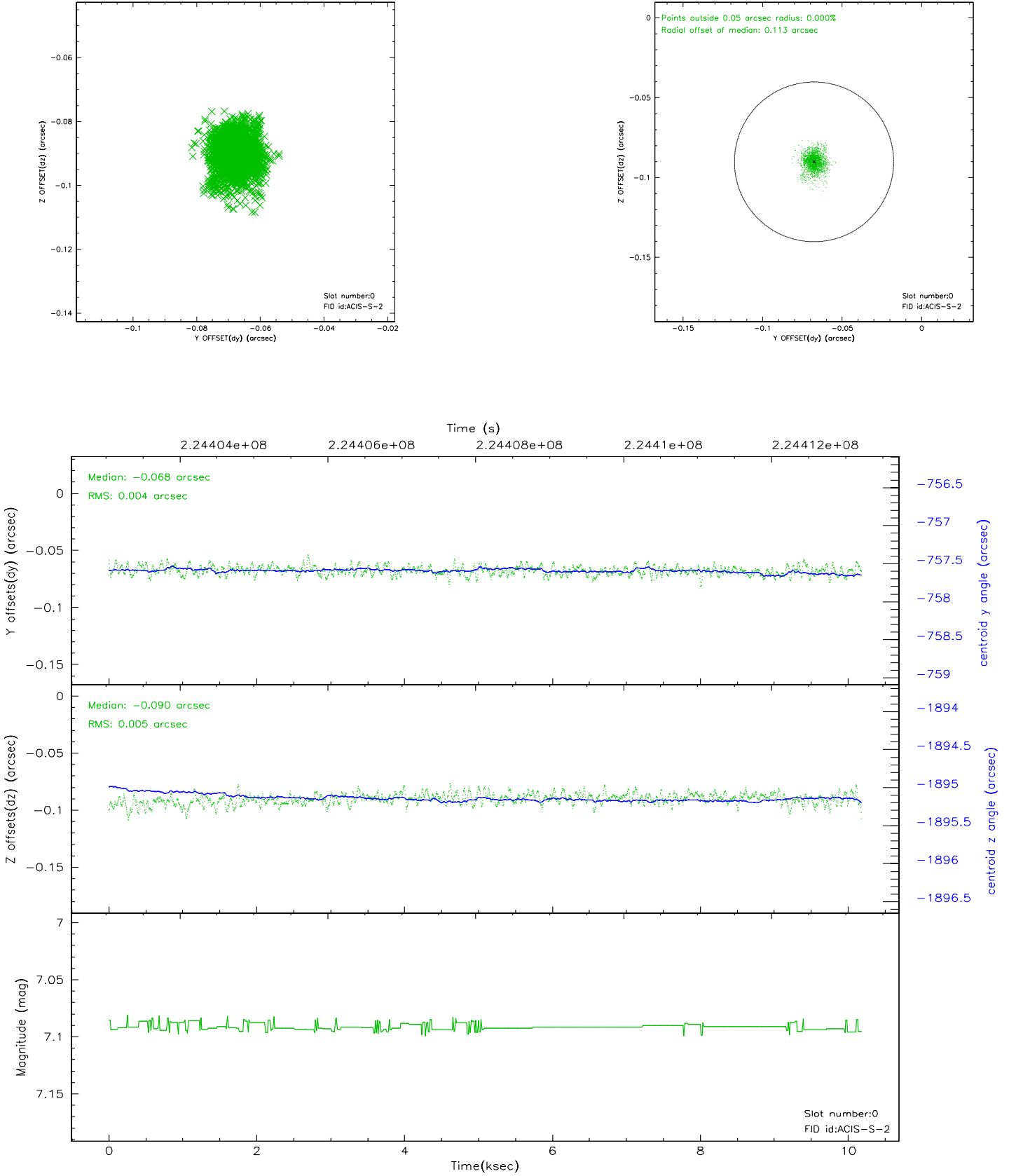


2.4.5 Slot 7

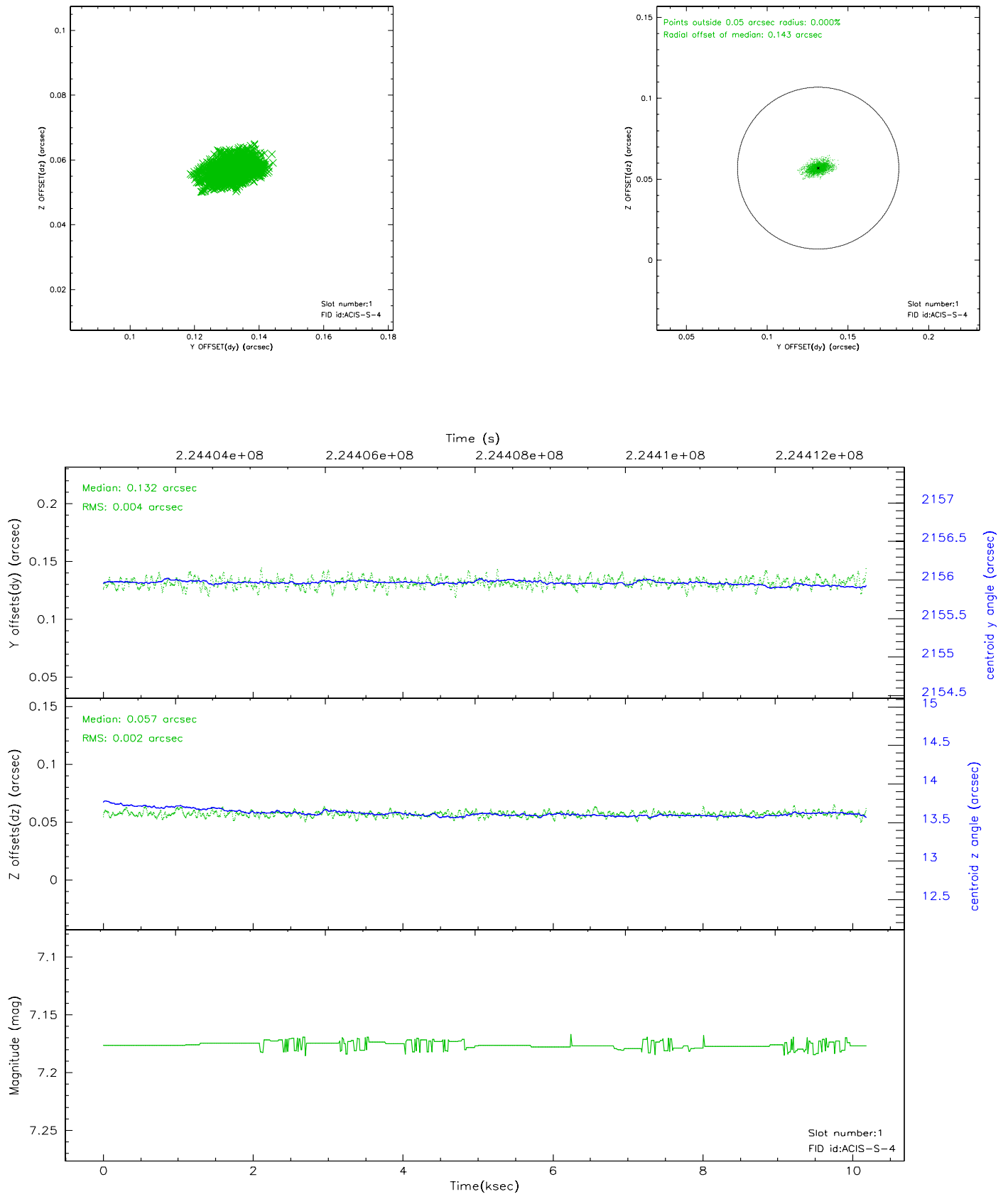


2.5 FID Slots

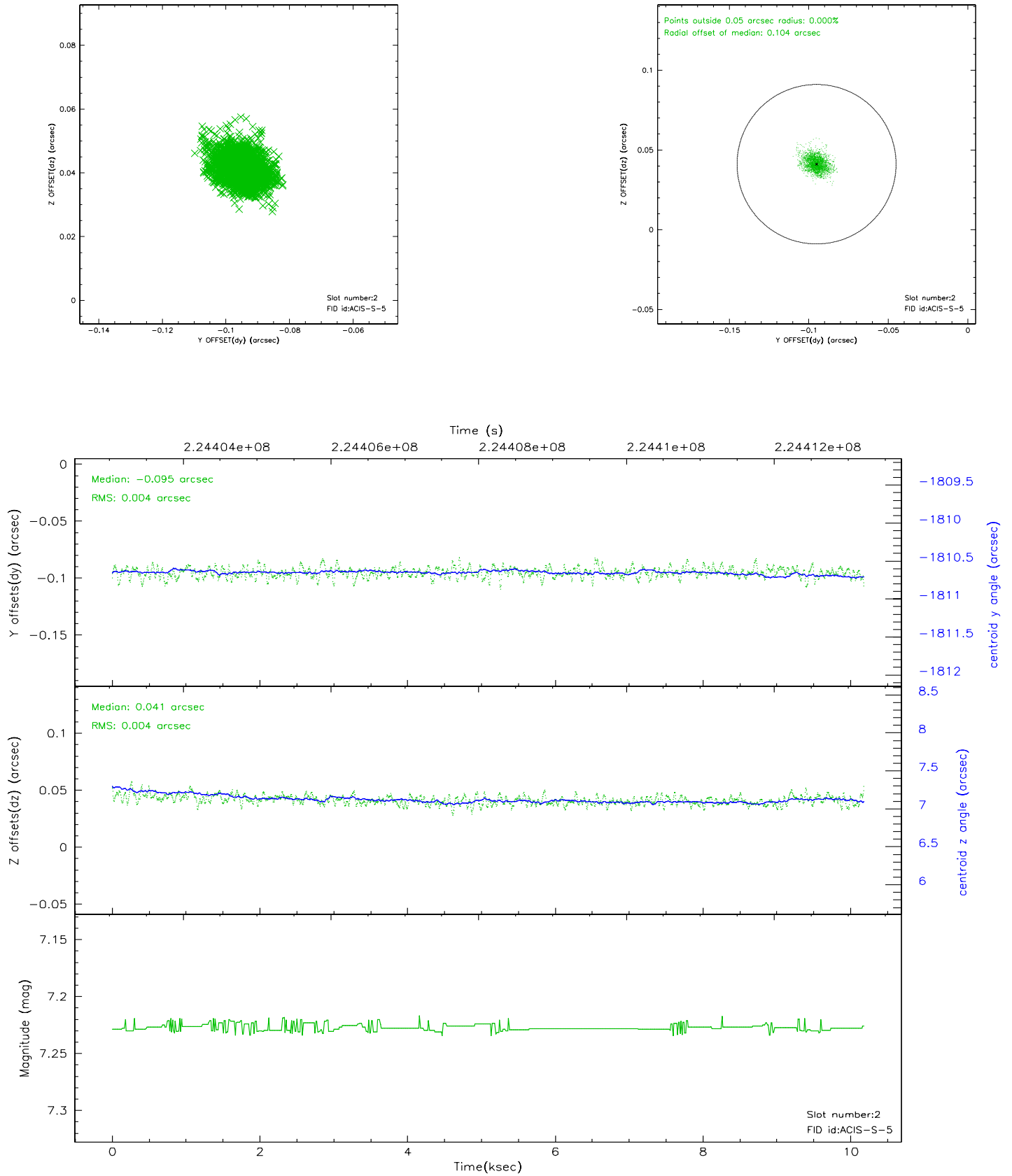
2.5.1 Slot 0



2.5.2 Slot 1



2.5.3 Slot 2

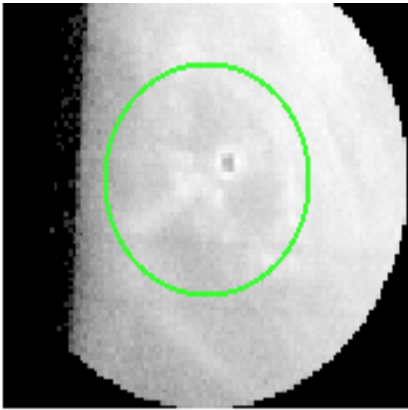


3 Gratings

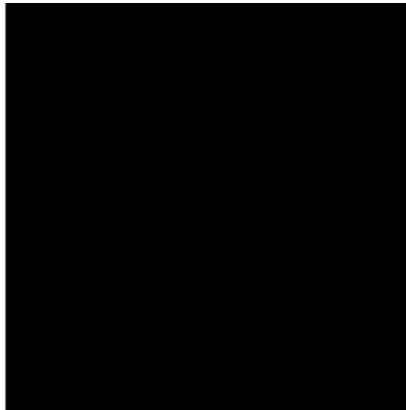
3.1 HEG Arm



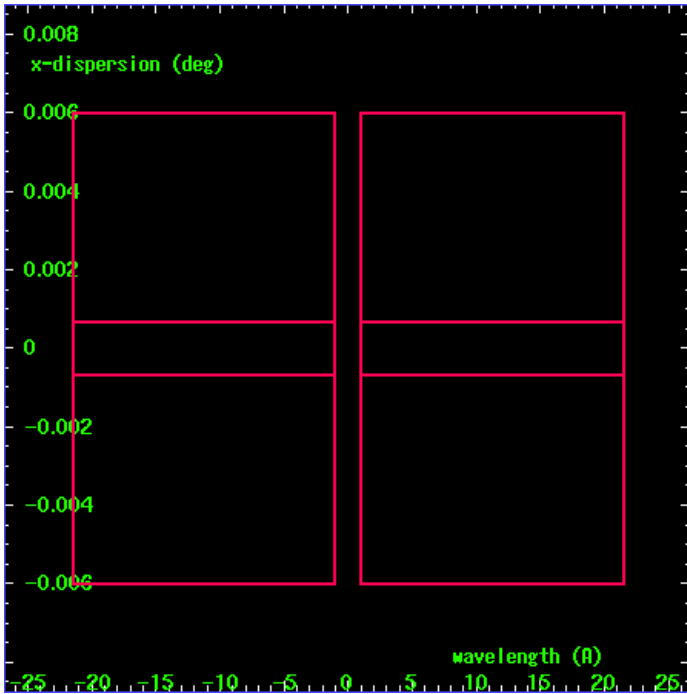
HEG Order Sort 123



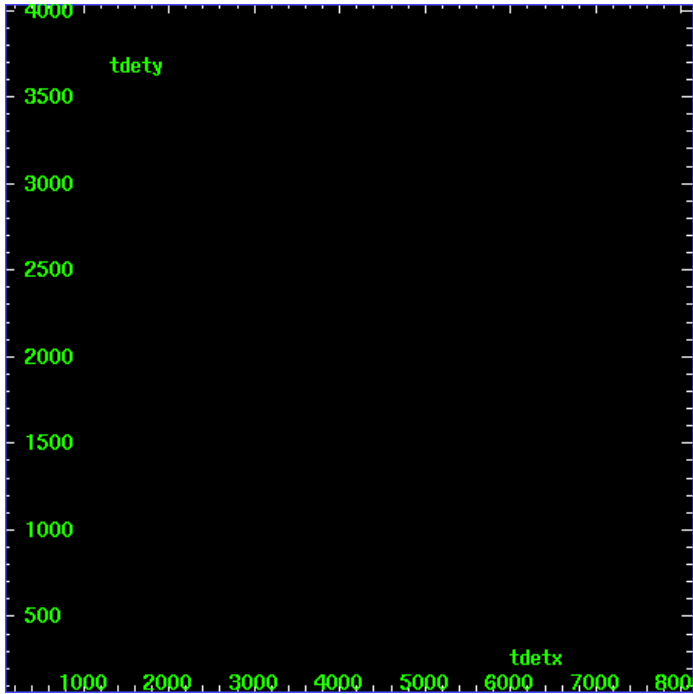
HEG Zero Order



HEG Order Sort ALL

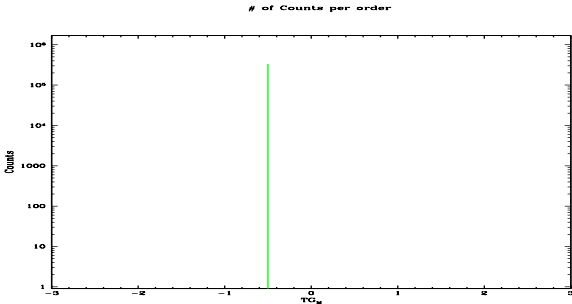


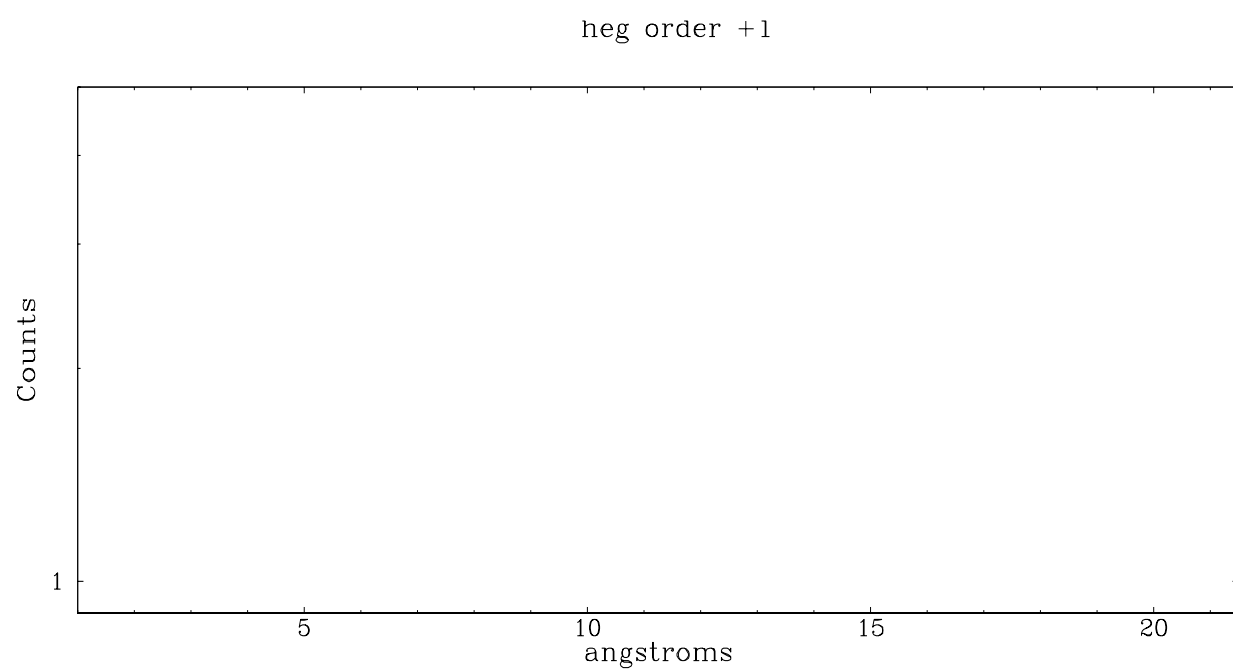
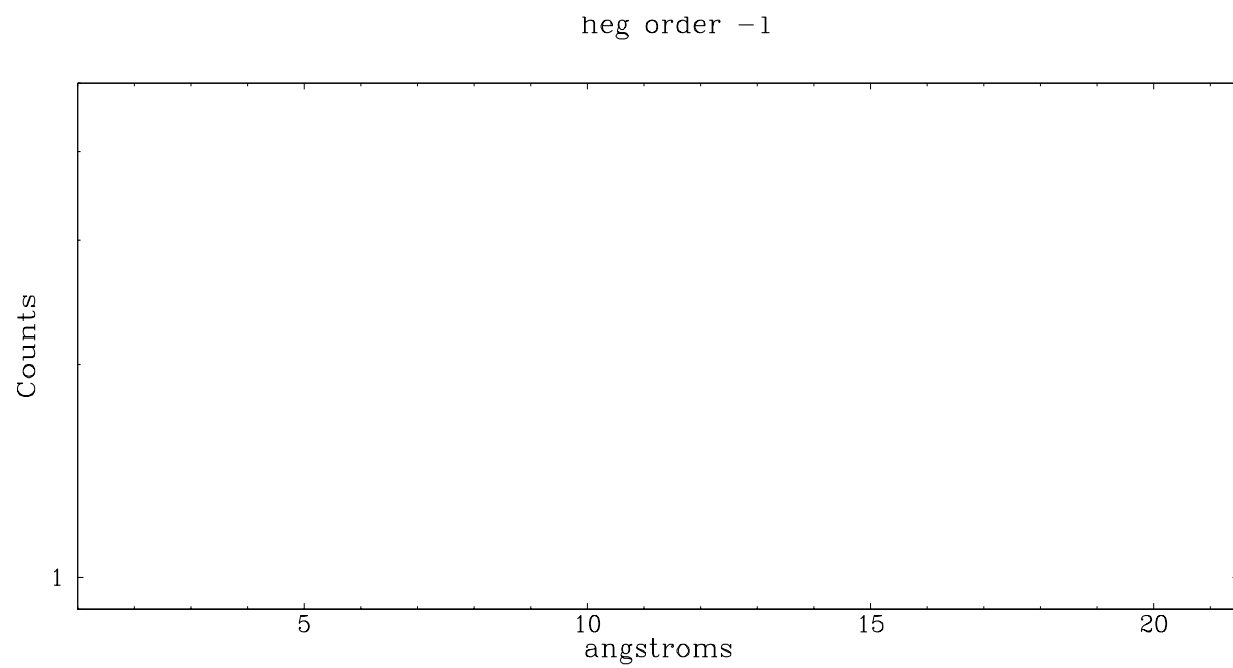
Spot Image HEG



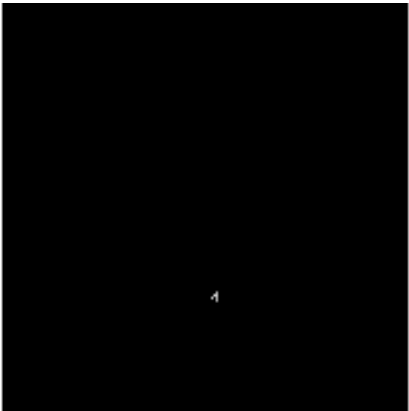
Full Detector HEG

	order -3	order -2	order -1	order 0	order 1	order 2	order 3
Events	0	0	0	336890	0	0	0

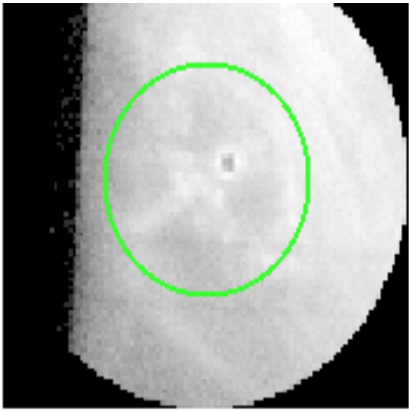




3.2 MEG Arm



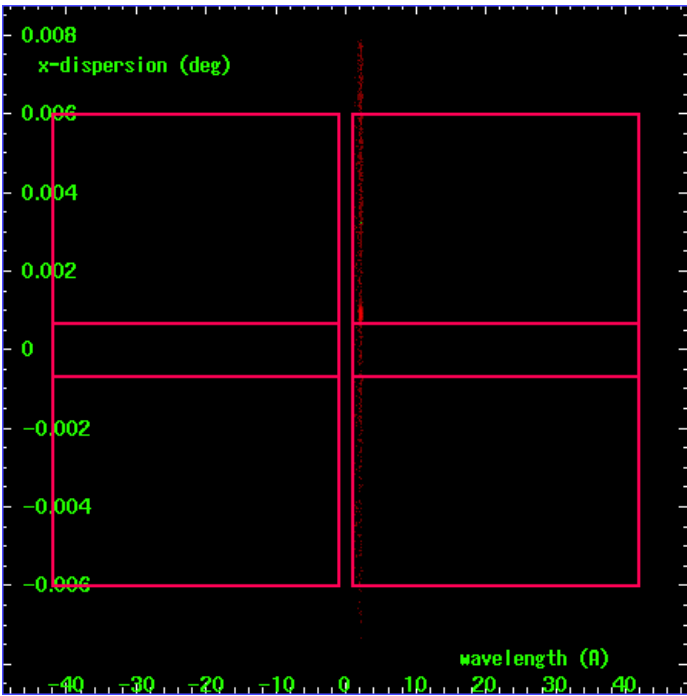
MEG Order Sort 123



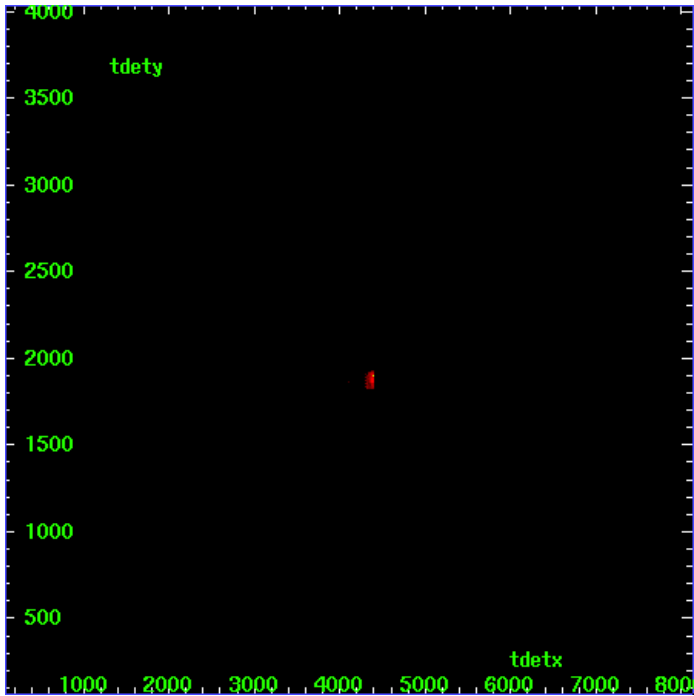
MEG Zero Order



MEG Order Sort ALL

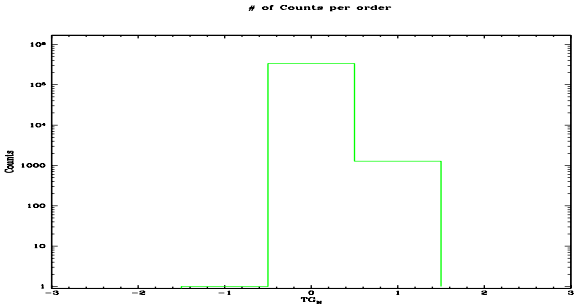


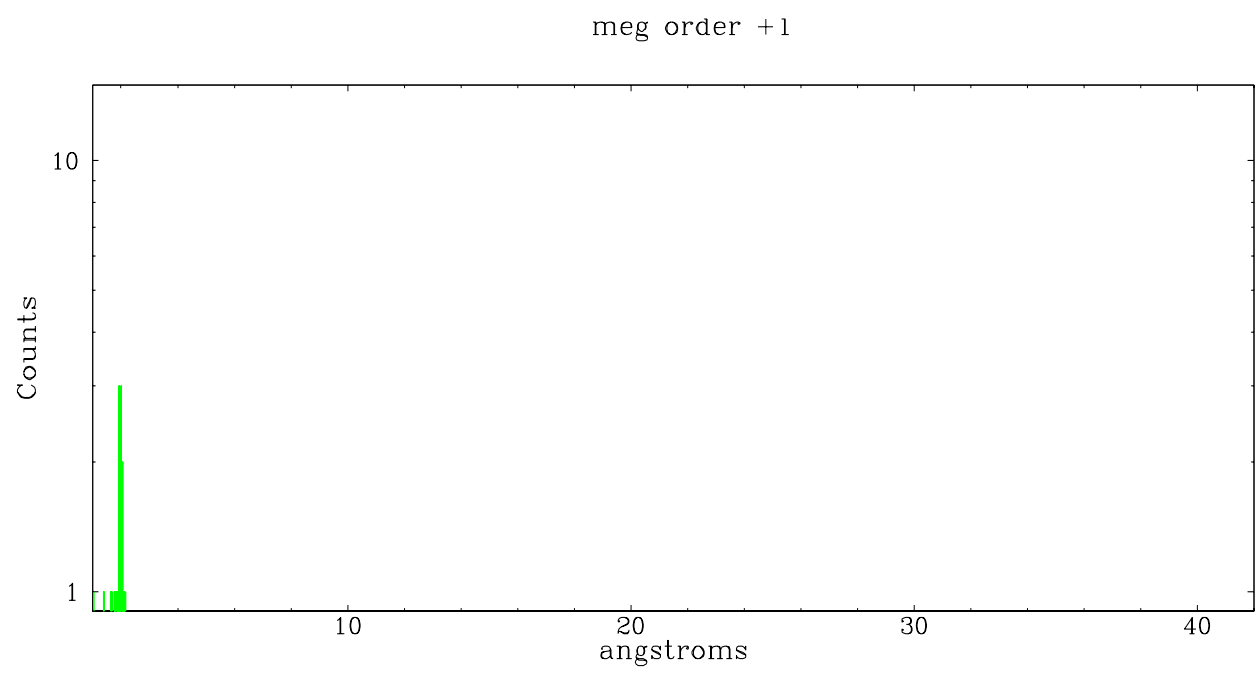
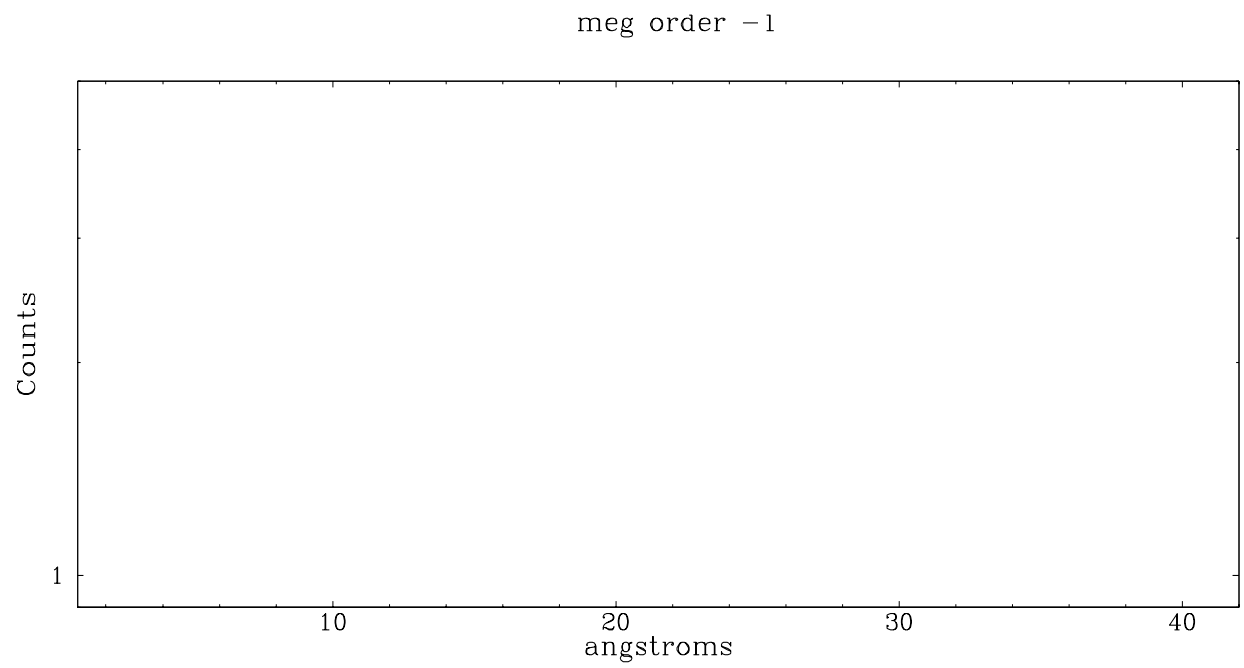
Spot Image MEG



Full Detector MEG

	order -3	order -2	order -1	order 0	order 1	order 2	order 3
Events	0	0	1	336890	1271	1	0





A Summary

A.1 Status

V&V Scientist	Beth Sundheim
V&V Date (YYYY-MM-DD)	2006.02.23
V&V Edition	1
V&V Disposition and Status	OK
V&V Charge Time	10.1817

A.2 Comments

Window constraint satisfied.