

# V&V Reference Report

## L2 ASCDS Version : 10

Observation 53561 - L2 Version 1  
Chandra X-Ray Center

L2 Processing Date : Jul 13 2013

## Contents

<b>1</b>	<b>Front</b>	<b>2</b>
<b>2</b>	<b>OBI</b>	<b>3</b>
2.1	OBI . . . . .	3
2.1.1	Images . . . . .	3
2.1.2	Bias . . . . .	3
2.1.3	Parameters . . . . .	4
2.1.4	Events . . . . .	4
2.2	Compared Parameters . . . . .	5
2.3	Star Slots . . . . .	6
2.4	FID Slots . . . . .	6
<b>A</b>	<b>Summary</b>	<b>7</b>
A.1	Status . . . . .	7
A.2	Comments . . . . .	7

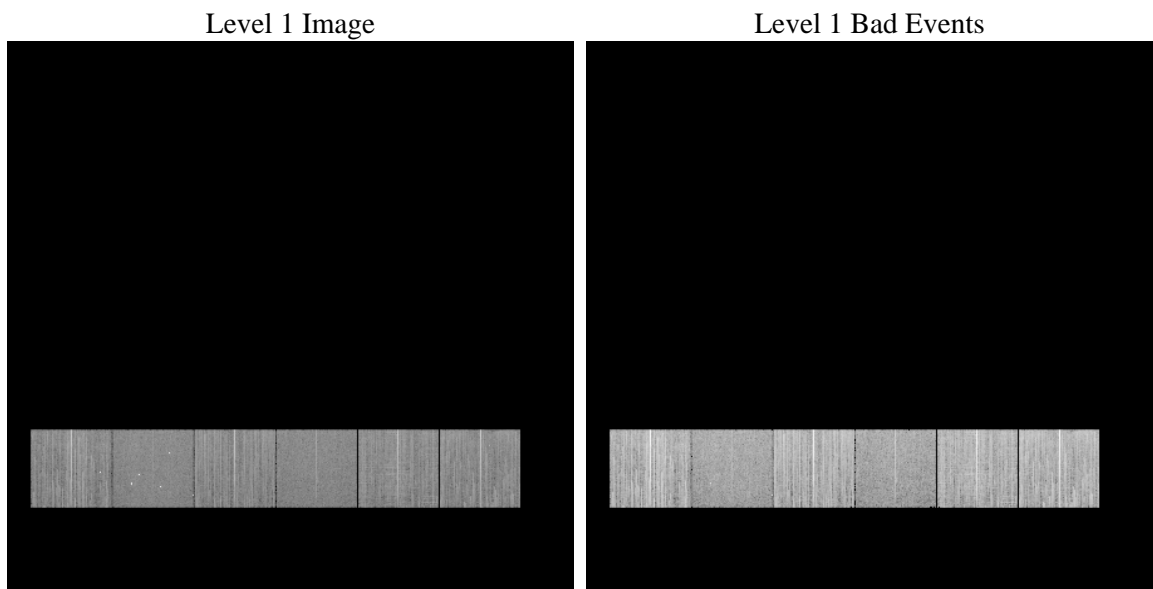
# 1 Front

seq_num	&#160	Sequence number
obs_id	53561	Observation id
title	ACIS-456789 diagnostics	Proposal title
observer	CHANDRA engineering request/realtime commanding	Principal investig
object	&#160	Source name
dtcycle	0	&#160
cycle	P	events from which exps? Prim/Second/Both
ra_targ	0.0	Observer's specified target RA [deg]
dec_targ	0.0	Observer's specified target Dec [deg]
ra_nom	163.50233246548	Nominal RA [deg]
dec_nom	60.872267722418	Nominal Dec [deg]
roll_nom	294.47075174848	Nominal Roll [deg]
revision	1	Processing version of data
ontime	8281.5999692082	Sum of GTIs [s]
livetime	8176.7333638173	Livetime [s]
ontime4	8281.5999692082	Sum of GTIs [s]
ontime5	8281.5999692082	Sum of GTIs [s]
ontime6	8281.5999692082	Sum of GTIs [s]
ontime7	8281.5999692082	Sum of GTIs [s]
ontime8	8281.5999692082	Sum of GTIs [s]
ontime9	8281.5999692082	Sum of GTIs [s]
l2events	227813	Number of level 2 events

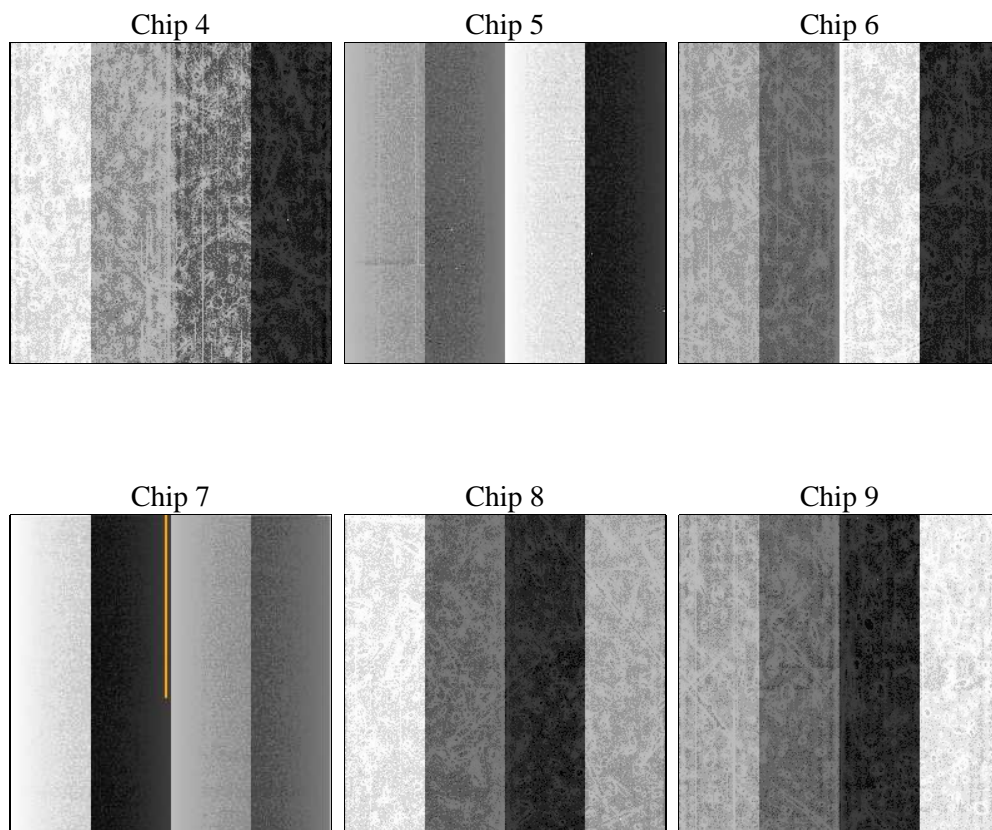
## 2 OBI

### 2.1 OBI

#### 2.1.1 Images



#### 2.1.2 Bias



### 2.1.3 Parameters

obi_num	0	Obi number	sched_exp_time	0.0	[s] Scheduled observation exposure time
ascdsver	10	Processing system revision	ontime	8281.5999692082	Sum of GTIs [s]
caldsver	4.5.7	&#160	ontime4	8281.5999692082	Sum of GTIs [s]
date	2013-07-13T17:50:56	Date and time of file creation	ontime5	8281.5999692082	Sum of GTIs [s]
revision	1	Processing version of data	ontime6	8281.5999692082	Sum of GTIs [s]
			ontime7	8281.5999692082	Sum of GTIs [s]
			ontime8	8281.5999692082	Sum of GTIs [s]
			ontime9	8281.5999692082	Sum of GTIs [s]
			l1events	846164	Number of level 1 events

### 2.1.4 Events

	ccd 4	ccd 5	ccd 6	ccd 7	ccd 8	ccd 9		ccd 4	ccd 5	ccd 6	ccd 7	ccd 8	ccd 9
level 1 events	149130	130194	144225	119943	150768	151904	grade 0 events	18764	10282	15473	8002	18413	15847
rejected events	115789	67401	111751	64598	110572	120005		12%	7%	10%	6%	12%	10%
rejected %	77%	51%	77%	53%	73%	79%	grade 1 events	126	242	61	84	94	77
								0%	0%	0%	0%	0%	0%
							grade 2 events	5992	22333	7422	13870	8227	6463
								4%	17%	5%	11%	5%	4%
							grade 3 events	2191	1985	1935	4290	2994	2127
								1%	1%	1%	3%	1%	1%
							grade 4 events	2166	1766	1919	4348	2956	2108
								1%	1%	1%	3%	1%	1%
							grade 5 events	2893	5494	2756	6798	3809	3195
								1%	4%	1%	5%	2%	2%
							grade 6 events	4228	26427	5725	24835	7606	5354
								2%	20%	3%	20%	5%	3%
							grade 7 events	112770	61665	108934	57716	106669	116733
								75%	47%	75%	48%	70%	76%

## 2.2 Compared Parameters

Parameter	Planned	Actual	Parameter	Planned	Actual
Instrument	ACIS	ACIS	Obspar format version number	7	7
Detector	ACIS-456789	ACIS-456789	Obspar file type	PREDICTED	ACTUAL
Grating	NONE	NONE	Obspar update status	NONE	UPDATED
Data mode	FAINT	FAINT	Number of optional ACIS chips dropped	0	0
Observation mode	SECONDARY	SECONDARY	On-chip summing requested	N	N
[deg] Pointing RA	0	163.502332465482	Subarray requested	NONE	NONE
[deg] Pointing Dec	0	60.87226772241773	Alternating exposures requested	N	N
[deg] Pointing Roll	0.0	294.4707517484805	[s] Primary exposure time	3.2	3.2
[mm] SIM focus pos	-1.429586	-1.428180813131781			
[mm] SIM defocus	0.1037507710433287	0.1051558262725154			
[mm] SIM translation stage pos	250.455976	250.466033080201			
[mm] SIM translation stage offset	0	-0.01005468664627074			
[s] Observation start time (MET)	490069160.981906	490069159.95691			
Observation start date	2013-07-13T02:19:21	2013-07-13T02:19:19			
[s] Observation end time (MET)	490081083.782553	490081082.75755			
Observation end date	2013-07-13T05:38:04	2013-07-13T05:38:02			
Read mode	TIMED	TIMED			

## **2.3 Star Slots**

## **2.4 FID Slots**

## **A Summary**

### **A.1 Status**

V&V Scientist	Jen Lauer
V&V Date (YYYY-MM-DD)	2013.07.14
V&V Edition	1
V&V Disposition and Status	OK
V&V Charge Time	8.2815999692082

### **A.2 Comments**