

V&V Reference Report

L2 ASCDS Version : 10

Observation 53401 - L2 Version 1
Chandra X-Ray Center

L2 Processing Date : Sep 12 2013

Contents

1	Front	2
2	OBI	3
2.1	OBI	3
2.1.1	Images	3
2.1.2	Bias	3
2.1.3	Parameters	4
2.1.4	Events	4
2.2	Compared Parameters	5
2.3	Star Slots	6
2.4	FID Slots	6
A	Summary	7
A.1	Status	7
A.2	Comments	7

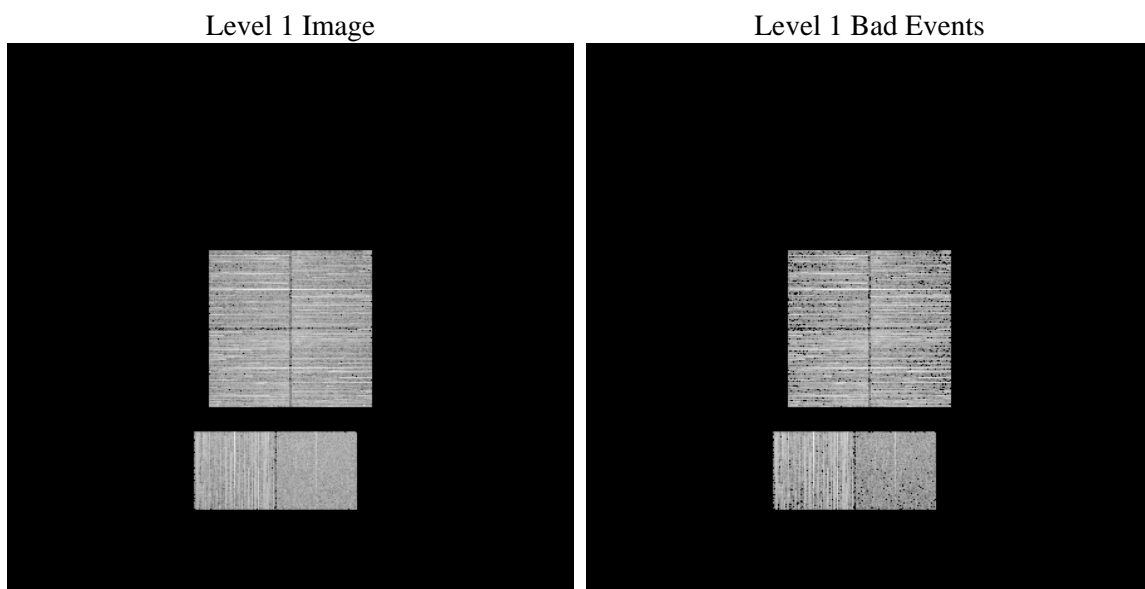
1 Front

seq_num	 	Sequence number
obs_id	53401	Observation id
title	ACIS-012367 diagnostics	Proposal title
observer	CHANDRA engineering request/realtime commanding	Principal investig
object	 	Source name
dtcycle	0	
cycle	P	events from which exps? Prim/Second/Both
ra_targ	0.0	Observer's specified target RA [deg]
dec_targ	0.0	Observer's specified target Dec [deg]
ra_nom	17.050034735013	Nominal RA [deg]
dec_nom	0.94072891306831	Nominal Dec [deg]
roll_nom	100.98455984316	Nominal Roll [deg]
revision	1	Processing version of data
ontime	3288.8576814532	Sum of GTIs [s]
livetime	3247.2121851783	Livetime [s]
ontime0	3288.8166414499	Sum of GTIs [s]
ontime1	3285.5346012712	Sum of GTIs [s]
ontime2	3288.7345614433	Sum of GTIs [s]
ontime3	3288.8987214565	Sum of GTIs [s]
ontime6	3288.69352144	Sum of GTIs [s]
ontime7	3288.8576814532	Sum of GTIs [s]
l2events	77227	Number of level 2 events

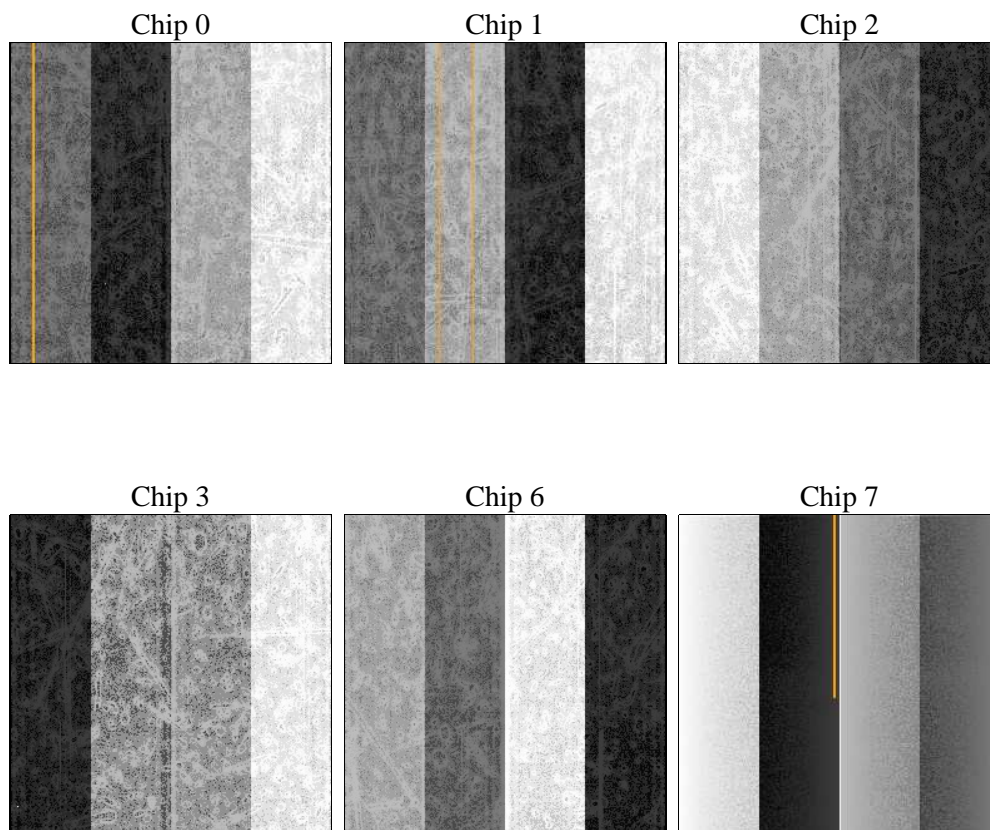
2 OBI

2.1 OBI

2.1.1 Images



2.1.2 Bias



2.1.3 Parameters

obi_num	0	Obi number	sched_exp_time	0.0	[s] Scheduled observation exposure time
ascdsver	10	Processing system revision	ontime	3288.8576814532	Sum of GTIs [s]
caldbver	4.5.8	 	ontime0	3288.8166414499	Sum of GTIs [s]
date	2013-09-12T20:59:48	Date and time of file creation	ontime1	3285.5346012712	Sum of GTIs [s]
revision	1	Processing version of data	ontime2	3288.7345614433	Sum of GTIs [s]
			ontime3	3288.8987214565	Sum of GTIs [s]
			ontime6	3288.69352144	Sum of GTIs [s]
			ontime7	3288.8576814532	Sum of GTIs [s]
			l1events	341917	Number of level 1 events

2.1.4 Events

	ccd 0	ccd 1	ccd 2	ccd 3	ccd 6	ccd 7		ccd 0	ccd 1	ccd 2	ccd 3	ccd 6	ccd 7
level 1 events	54446	53517	62920	60317	62419	48298	grade 0 events	5919	5782	6114	6482	5921	3169
rejected events	42616	41735	51026	48010	50092	26438		10%	10%	9%	10%	9%	6%
rejected %	78%	77%	81%	79%	80%	54%	grade 1 events	29	22	41	45	28	27
								0%	0%	0%	0%	0%	0%
							grade 2 events	2410	2610	2276	2386	2650	5413
								4%	4%	3%	3%	4%	11%
							grade 3 events	805	739	811	799	774	1755
								1%	1%	1%	1%	1%	3%
							grade 4 events	763	725	826	860	765	1710
								1%	1%	1%	1%	1%	3%
							grade 5 events	1124	1079	1074	1209	1164	2761
								2%	2%	1%	2%	1%	5%
							grade 6 events	1933	1926	1867	1780	2217	9813
								3%	3%	2%	2%	3%	20%
							grade 7 events	41463	40634	49911	46756	48900	23650
								76%	75%	79%	77%	78%	48%

2.2 Compared Parameters

Parameter	Planned	Actual	Parameter	Planned	Actual
Instrument	ACIS	ACIS	Obspar format version number	7	7
Detector	ACIS-012367	ACIS-012367	Obspar file type	PREDICTED	ACTUAL
Grating	NONE	NONE	Obspar update status	NONE	UPDATED
Data mode	FAINT	FAINT	Number of optional ACIS chips dropped	0	0
Observation mode	SECONDARY	SECONDARY	On-chip summing requested	N	N
[deg] Pointing RA	0	17.05003473501299	Subarray requested	NONE	NONE
[deg] Pointing Dec	0	0.9407289130683076	Alternating exposures requested	N	N
[deg] Pointing Roll	0.0	100.9845598431625	[s] Primary exposure time	3.2	3.2
[mm] SIM focus pos	-1.429586	-1.428180813131781			
[mm] SIM defocus	0.1037507710433287	0.1051558262725154			
[mm] SIM translation stage pos	250.455976	250.466033080201			
[mm] SIM translation stage offset	0	-0.01005468664627074			
[s] Observation start time (MET)	495356482.320148	495356481.29515			
Observation start date	2013-09-12T07:01:22	2013-09-12T07:01:21			
[s] Observation end time (MET)	495362841.420496	495362840.3955			
Observation end date	2013-09-12T08:47:21	2013-09-12T08:47:20			
Read mode	TIMED	TIMED			

2.3 Star Slots

2.4 FID Slots

A Summary

A.1 Status

V&V Scientist	Jen Lauer
V&V Date (YYYY-MM-DD)	2013.09.13
V&V Edition	1
V&V Disposition and Status	OK
V&V Charge Time	3.2888576814532

A.2 Comments