

V&V Reference Report

L2 ASCDS Version : 8.1.1

Observation 531 - L2 Version 4

Chandra X-Ray Center

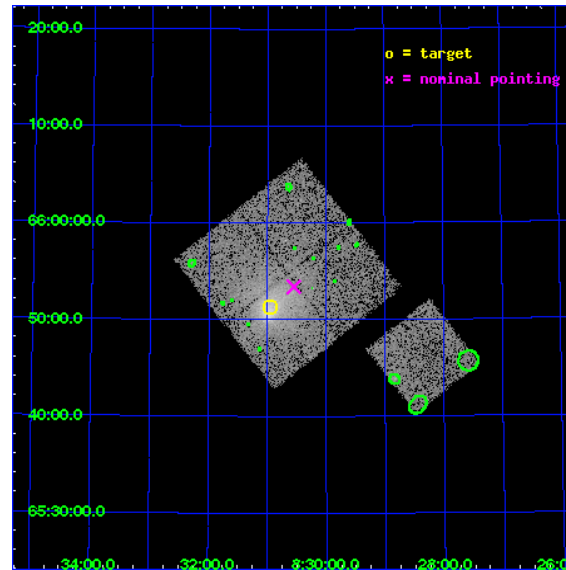
L2 Processing Date : Nov 29 2009

Contents

1	Front	2
2	OBI	3
2.1	OBI	3
2.1.1	Images	3
2.1.2	Bias	3
2.1.3	Parameters	4
2.1.4	Events	4
2.2	Compared Parameters	5
2.3	Aspect	6
2.4	Star Slots	9
2.4.1	Slot 3	9
2.4.2	Slot 4	10
2.4.3	Slot 5	11
2.4.4	Slot 6	12
2.4.5	Slot 7	13
2.5	FID Slots	14
2.5.1	Slot 0	14
2.5.2	Slot 1	15
2.5.3	Slot 2	16
3	Point Sources	17
A	Summary	18
A.1	Status	18
A.2	Comments	18

1 Front

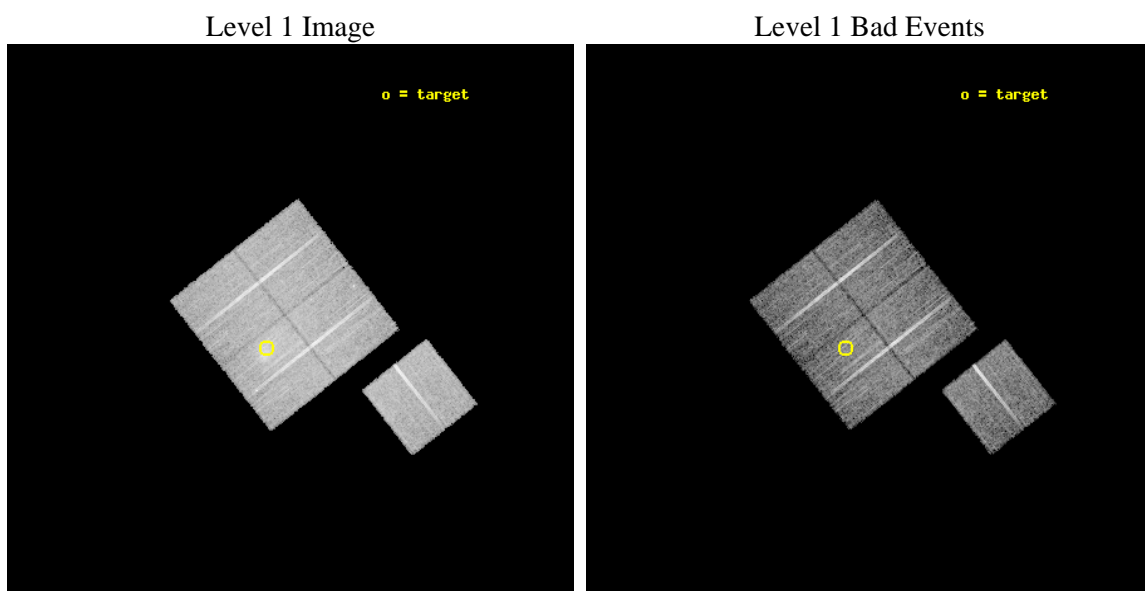
seq_num	800039	Sequence number
obs_id	531	Observation id
title	DETERMINATION OF H0/Q0	Proposal title
observer	DR. LEON VANSPEYBROECK	Principal investigator
object	A665	Source name
dtcycle	0	
cycle	P	events from which exps? Prim/Second/Both
ra_targ	127.739167	Observer's specified target RA
dec_targ	65.854	Observer's specified target Dec
ra_nom	127.63735445048	Nominal RA
dec_nom	65.889716877489	Nominal Dec
roll_nom	141.7522743046	Nominal Roll
revision	4	Processing version of data
ontime	9129.6000085026	Sum of GTIs [s]
livetime	9013.9955160098	Livetime [s]
ontime0	9126.359048292	Sum of GTIs [s]
ontime1	9129.6000085026	Sum of GTIs [s]
ontime2	9129.6000085026	Sum of GTIs [s]
ontime3	9129.6000085026	Sum of GTIs [s]
ontime6	9129.6000085026	Sum of GTIs [s]
l2events	47866	Number of level 2 events



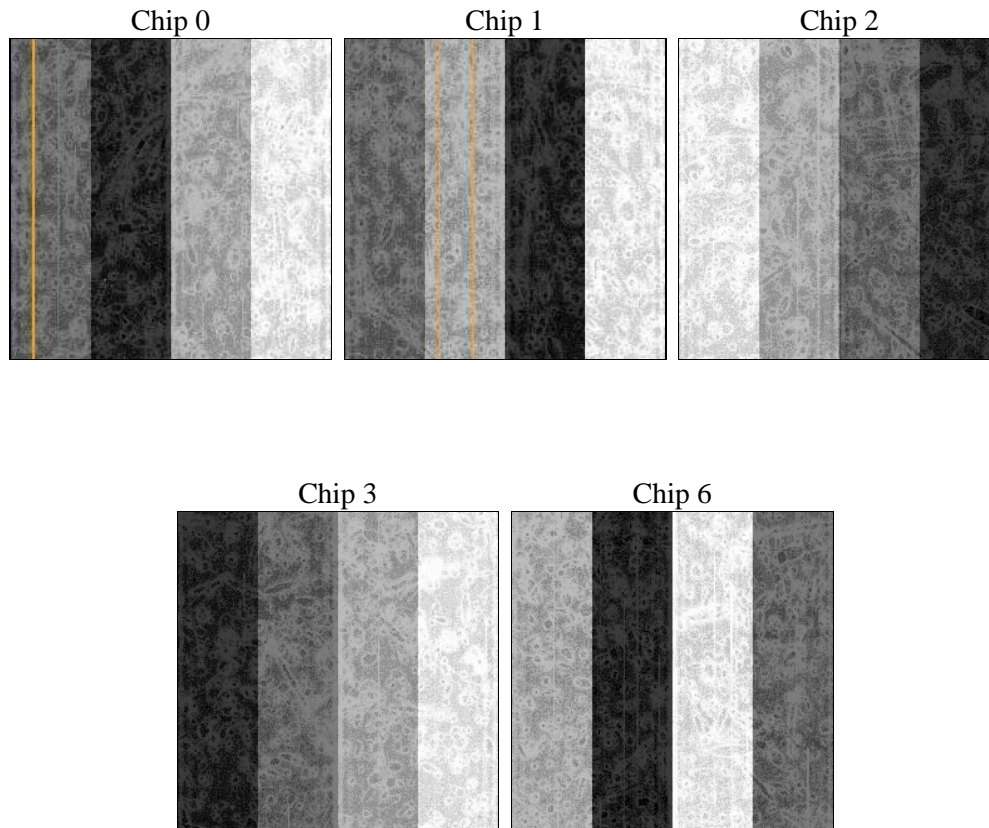
2 OBI

2.1 OBI

2.1.1 Images



2.1.2 Bias



2.1.3 Parameters

obi_num	0	Obi number	sched_exp_time	10000.000000	Scheduled observation exposure time
ascdsver	8.1.1	ASCDS version number	ontime	9129.6000085026	Sum of GTIs [s]
caldsver	4.1.4	 	ontime0	9126.359048292	Sum of GTIs [s]
date	2009-11-29T20:44:59	Date and time of file creation	ontime1	9129.6000085026	Sum of GTIs [s]
revision	3	Processing version of data	ontime2	9129.6000085026	Sum of GTIs [s]
			ontime3	9129.6000085026	Sum of GTIs [s]
			ontime6	9129.6000085026	Sum of GTIs [s]
			l1events	390477	Number of level 1 events

2.1.4 Events

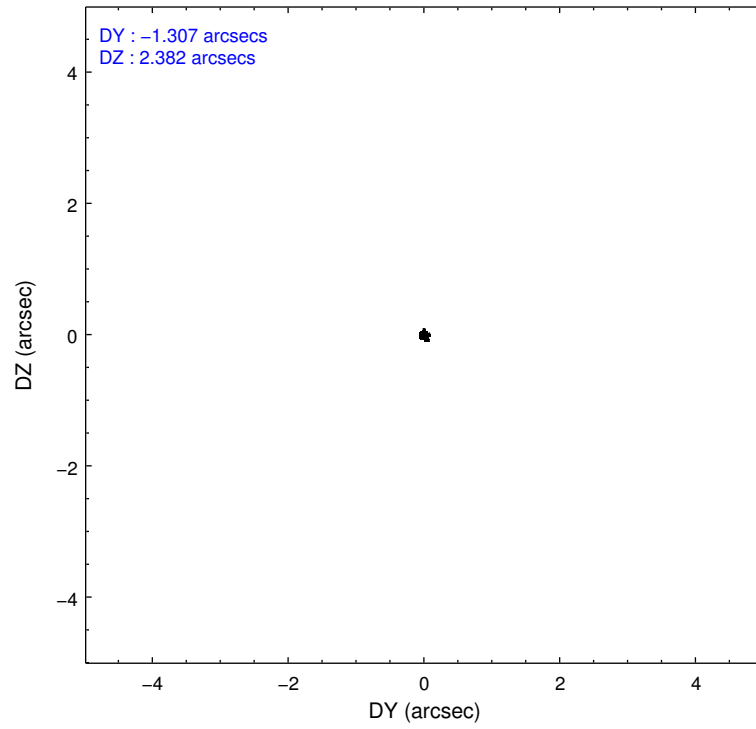
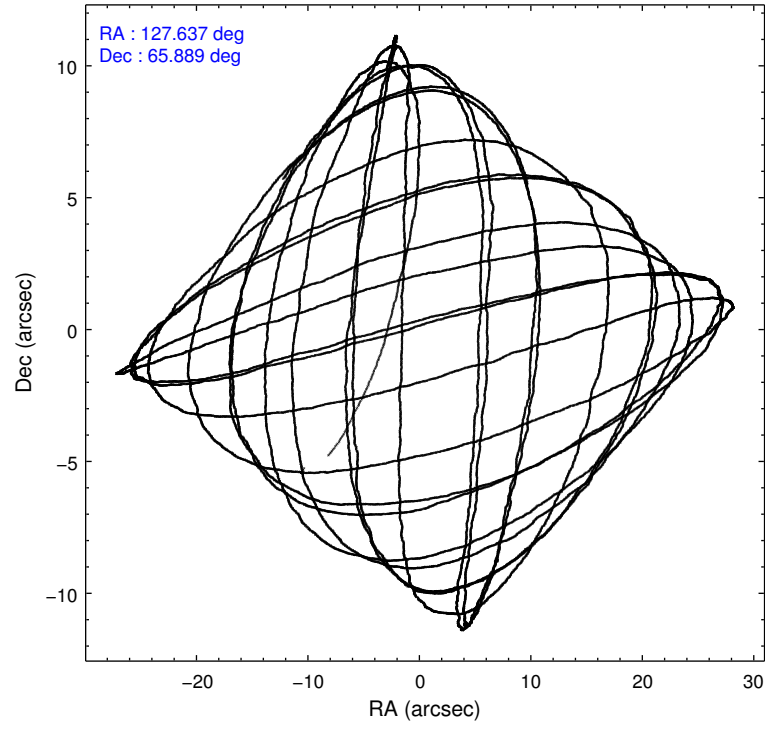
	ccd 0	ccd 1	ccd 2	ccd 3	ccd 6
level 1 events	73004	71993	78428	89986	77066
rejected events	65099	62104	70626	71351	69682
rejected %	89%	86%	90%	79%	90%

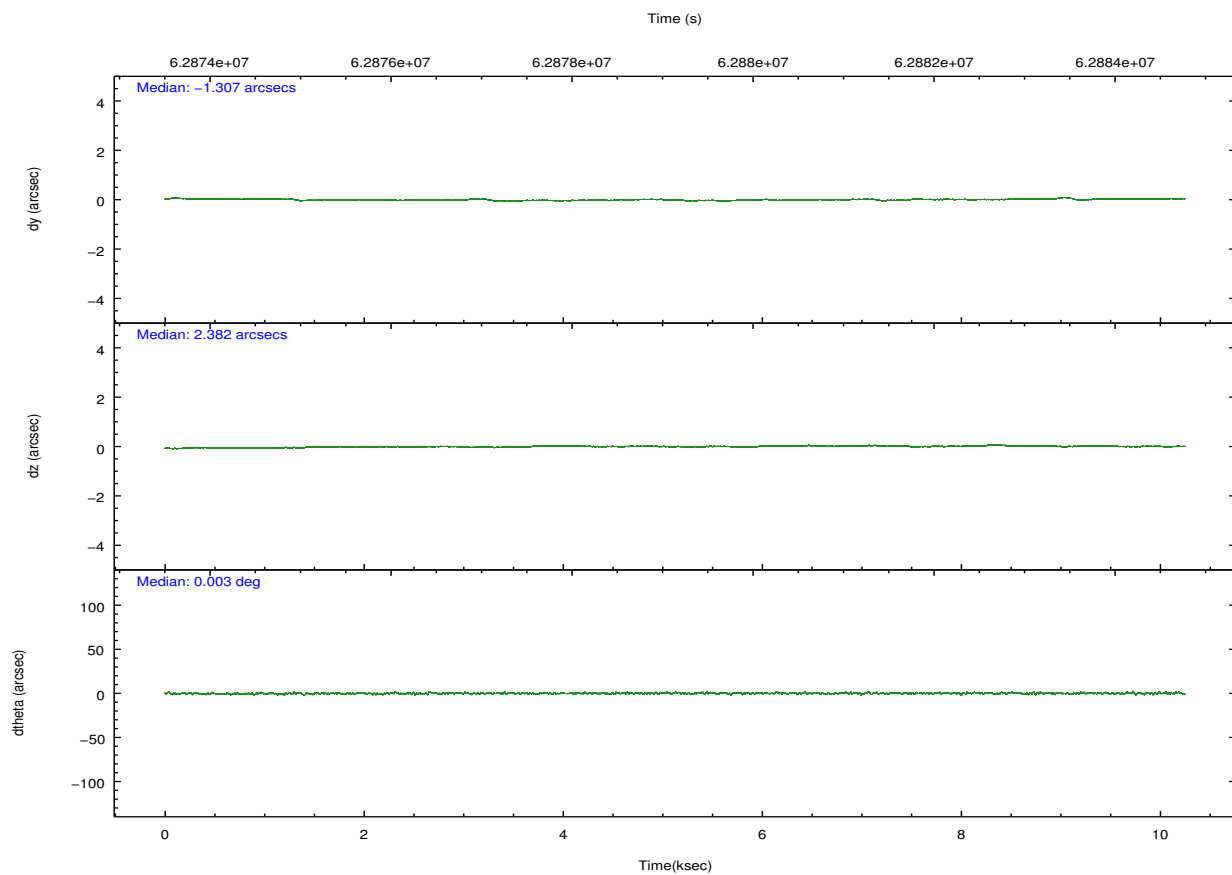
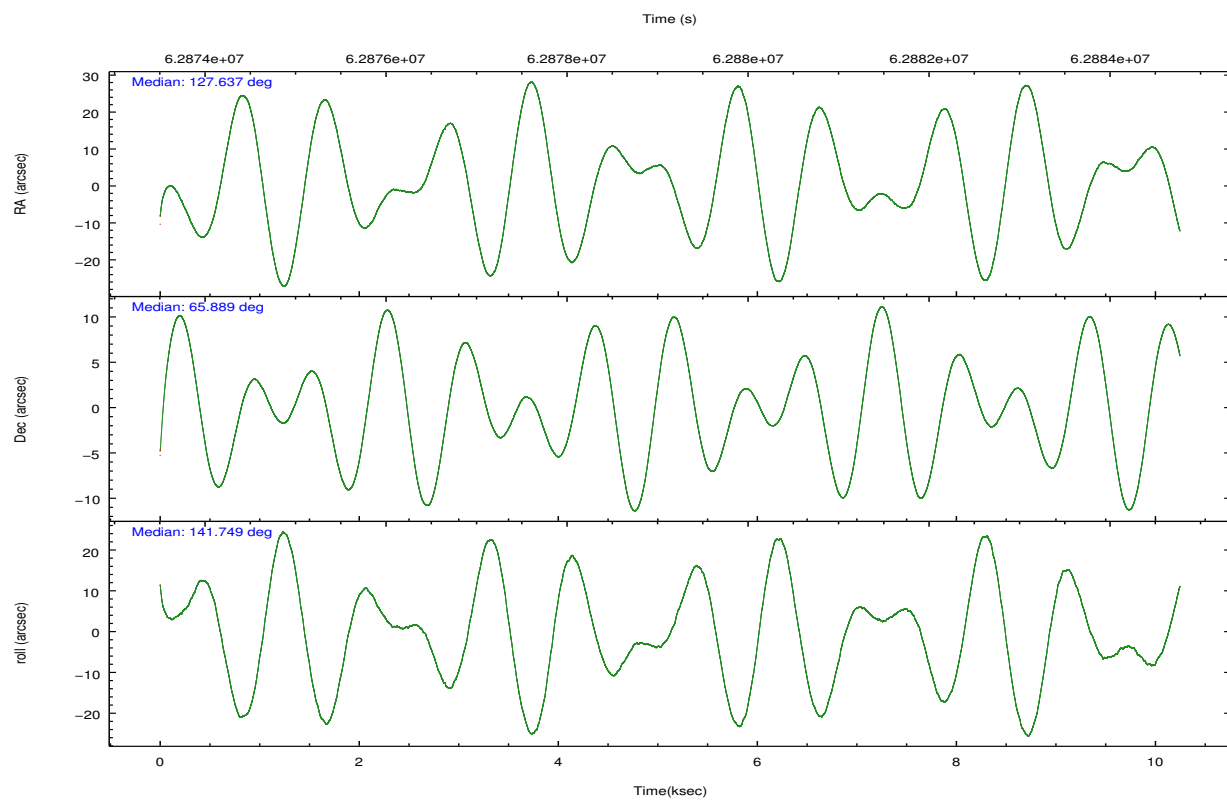
	ccd 0	ccd 1	ccd 2	ccd 3	ccd 6
grade 0 events	2146	3316	2038	8845	1421
	2%	4%	2%	9%	1%
grade 1 events	19	14	20	31	7
	0%	0%	0%	0%	0%
grade 2 events	2889	3388	3163	6315	2942
	3%	4%	4%	7%	3%
grade 3 events	557	607	477	732	471
	0%	0%	0%	0%	0%
grade 4 events	525	649	469	654	498
	0%	0%	0%	0%	0%
grade 5 events	1483	1601	1279	1448	1641
	2%	2%	1%	1%	2%
grade 6 events	1845	1977	1715	2196	2102
	2%	2%	2%	2%	2%
grade 7 events	63540	60441	69267	69765	67984
	87%	83%	88%	77%	88%

2.2 Compared Parameters

Parameter	Planned	Actual	Parameter	Planned	Actual
Instrument	ACIS	ACIS	Obspar format version number	6	6
Detector	ACIS-01236	ACIS-01236	Obspar file type	PREDICTED	ACTUAL
Grating	NONE	NONE	Obspar update status	OVERRIDE	OVERRIDE
Data mode	VFAINT	VFAINT	On-chip summing requested	N	N
Observation mode	POINTING	POINTING	Subarray requested	NONE	NONE
Pointing RA	127.739167	127.6373544504843	Alternating exposures requested	N	N
Pointing Dec	65.854	65.88971687748867	Primary exposure time	3.200000	3.200000
Pointing Roll	141.482422	141.7522743045983			
SIM focus pos (mm)	-0.78090834371673	-0.78090834371673			
SIM defocus (mm)	0.001439854621703041	0.001439854621703041			
SIM translation stage pos (mm)	-230.670828711	-230.670828711			
SIM translation stage offset (mm)	-2.921634380431783	-2.921634380431783			
Observation start time	62874015.052926	62874015.052926			
Observation start date	1999-12-29T17:00:15	1999-12-29T17:00:15			
Observation end time	62884264.028297	62884264.028297			
Observation end date	1999-12-29T19:51:04	1999-12-29T19:51:04			
Read mode	TIMED	TIMED			

2.3 Aspect



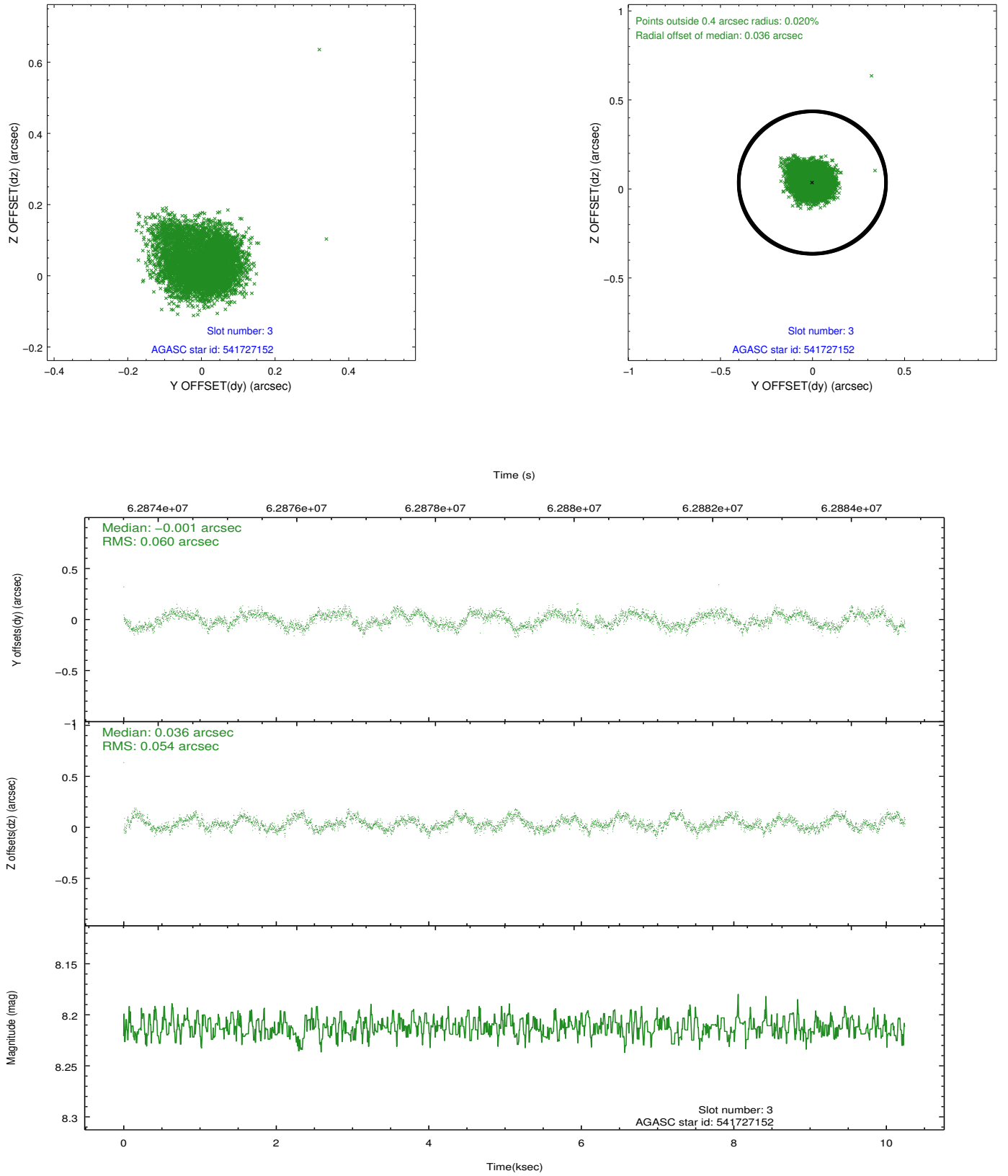


Slot Statistics

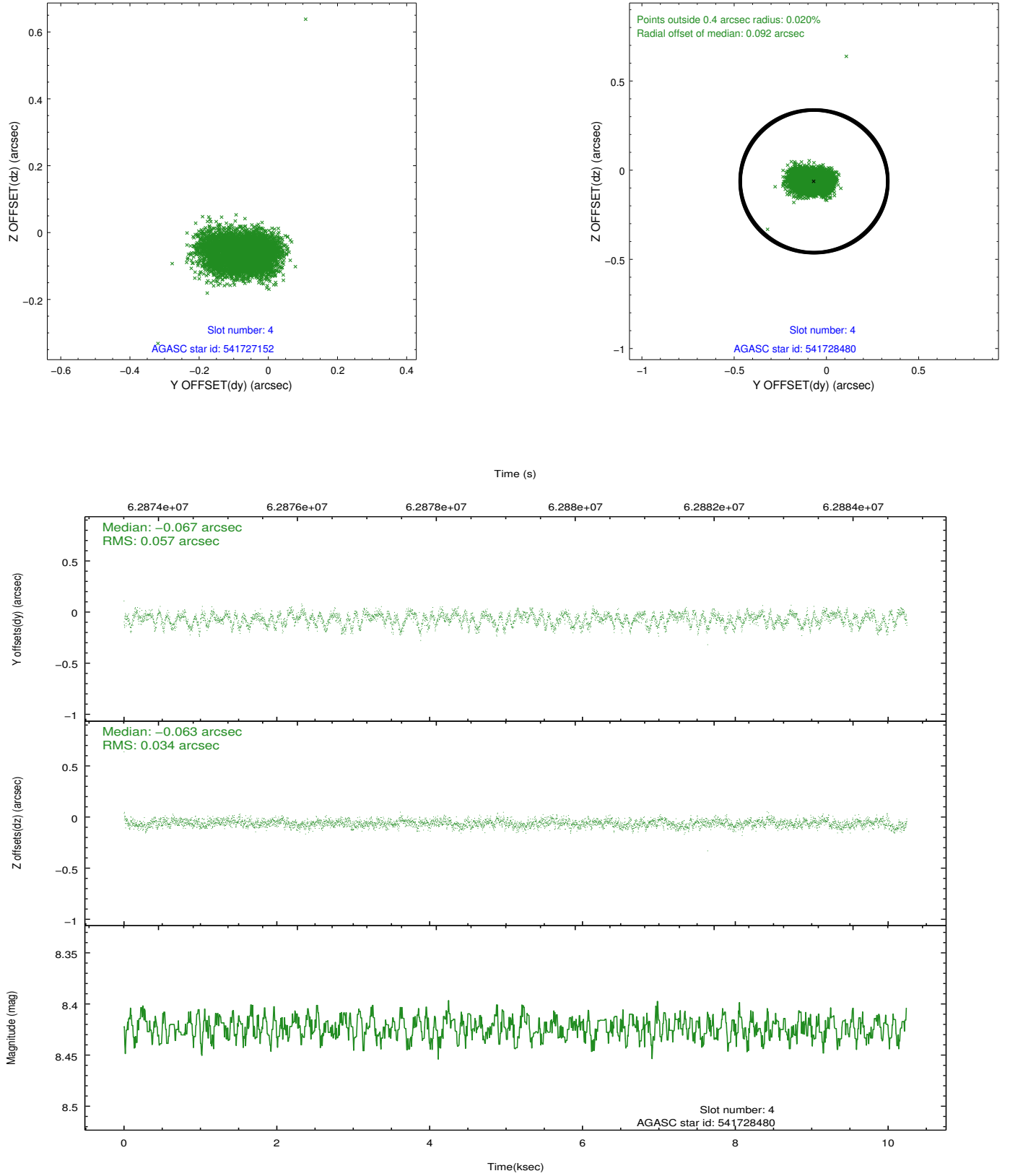
slot	status	id	mag	n_pts	med_dy	med_dz	dr1	dr2	ra	dec	mean_y	mean_z
0	FID	ACIS-I-2	7.22	4999	-0.075	0.154	0.009	0.015	0.000000	0.000000	-753.31	-891.31
1	FID	ACIS-I-4	7.21	4999	0.085	0.007	0.006	0.011	0.000000	0.000000	2160.97	1014.34
2	FID	ACIS-I-5	7.23	4999	-0.111	-0.092	0.009	0.014	0.000000	0.000000	-1806.63	1012.26
3	GUIDE	541727152	8.21	4998	-0.001	0.036	0.087	0.132	127.263195	66.213821	1239.66	-529.02
4	GUIDE	541728480	8.42	4999	-0.067	-0.063	0.069	0.116	125.879819	65.741108	1812.98	2054.92
5	GUIDE	541729480	9.06	4924	-0.010	-0.067	0.069	0.114	126.985305	65.880968	822.53	665.71
6	GUIDE	541728304	9.47	4995	0.036	0.051	0.080	0.130	129.452175	65.893478	-1969.09	-1652.18
7	GUIDE	541722912	9.71	4990	0.050	0.040	0.082	0.134	129.024789	65.904672	-1461.91	-1280.34

2.4 Star Slots

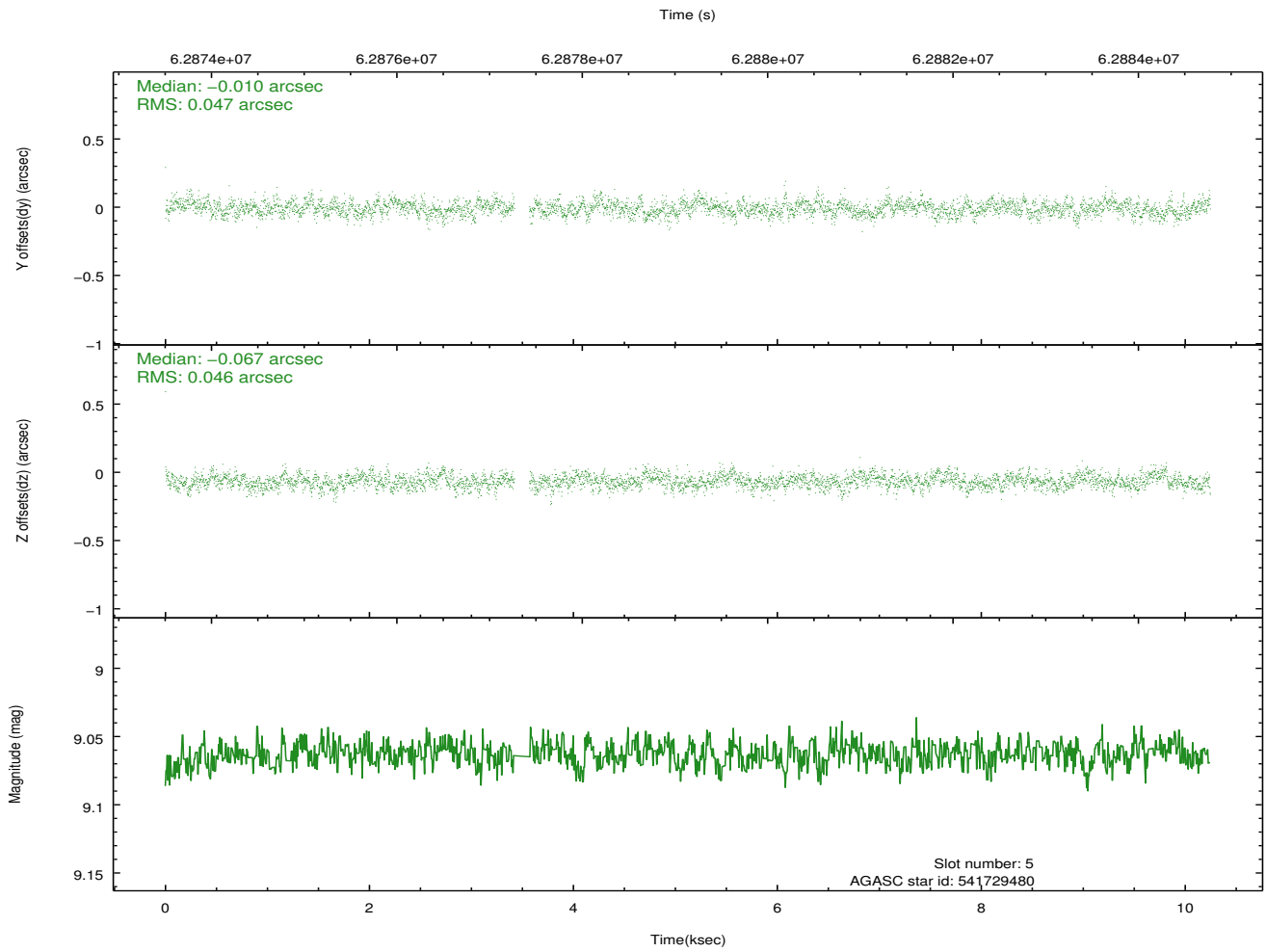
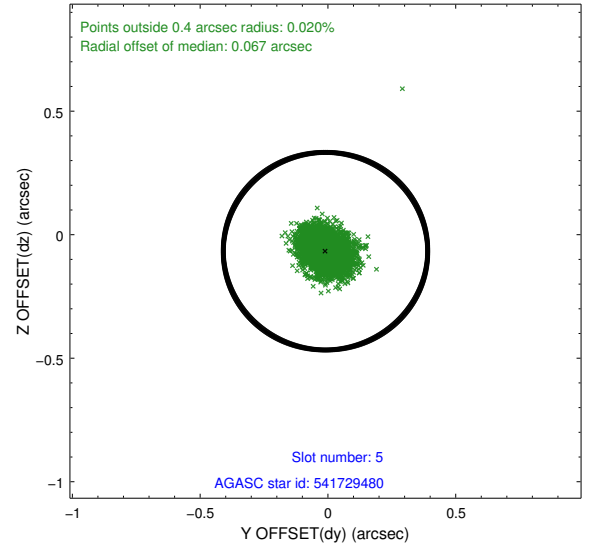
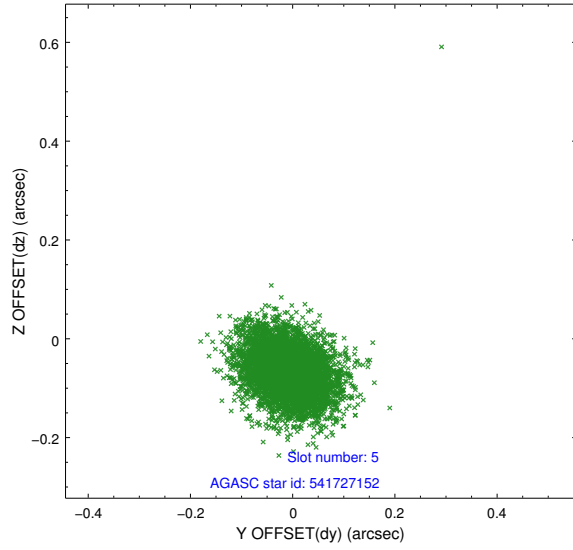
2.4.1 Slot 3



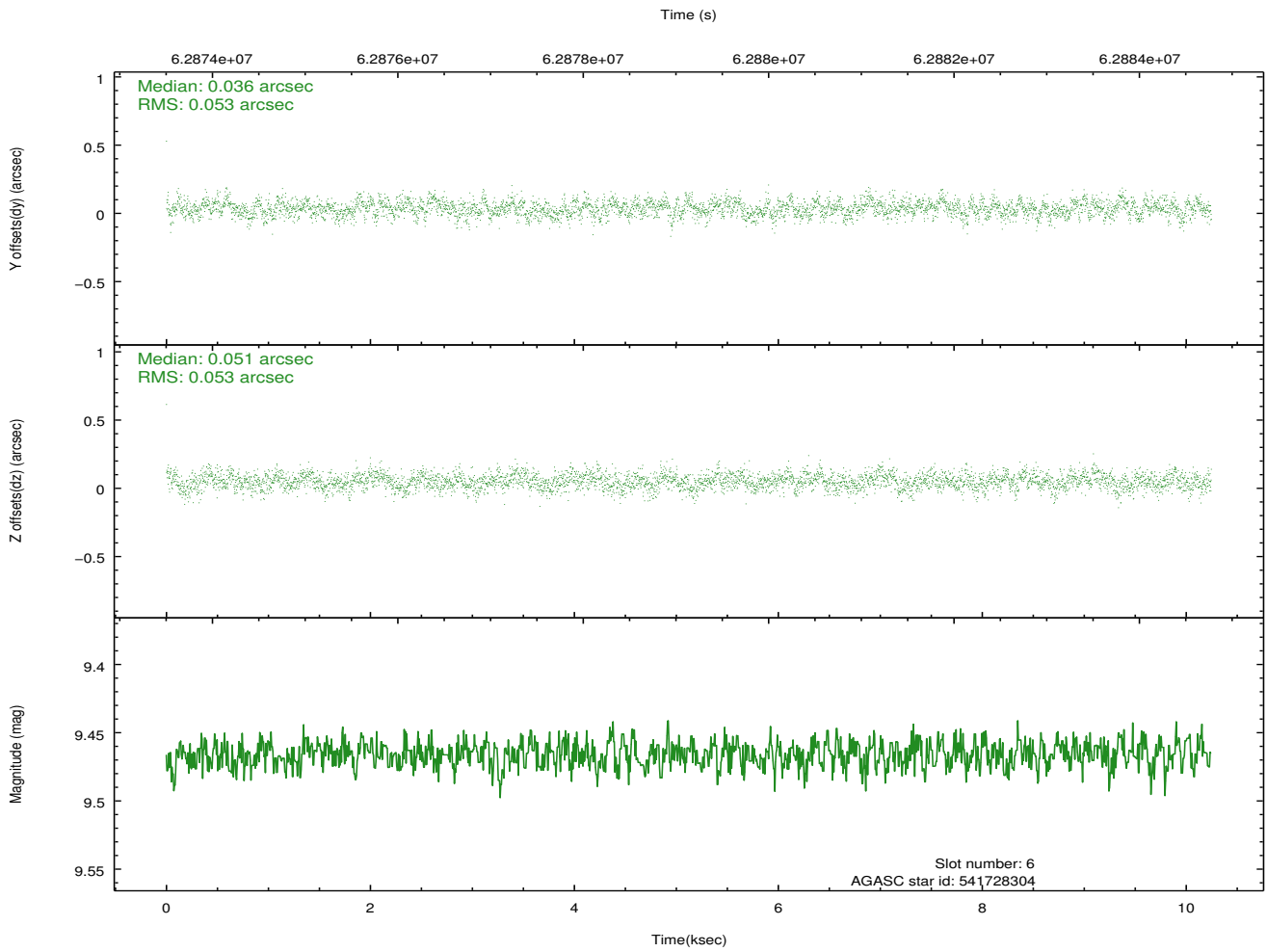
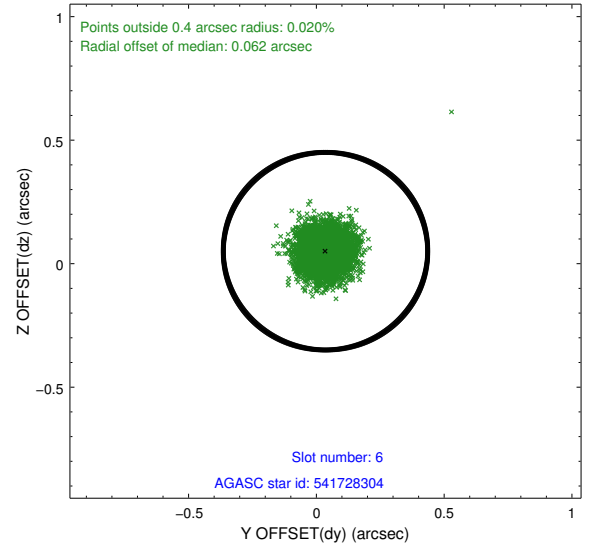
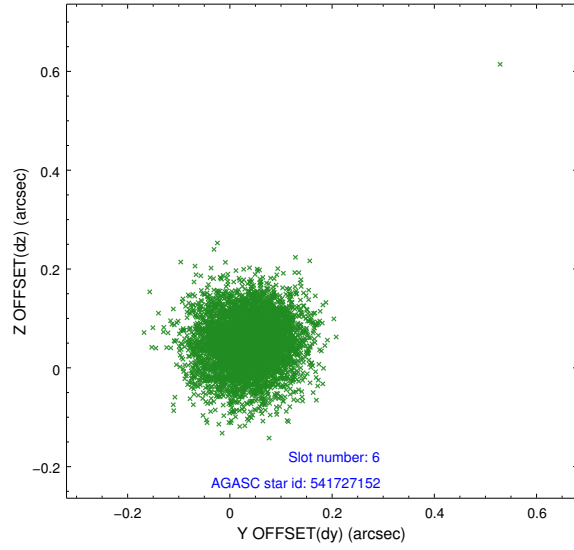
2.4.2 Slot 4



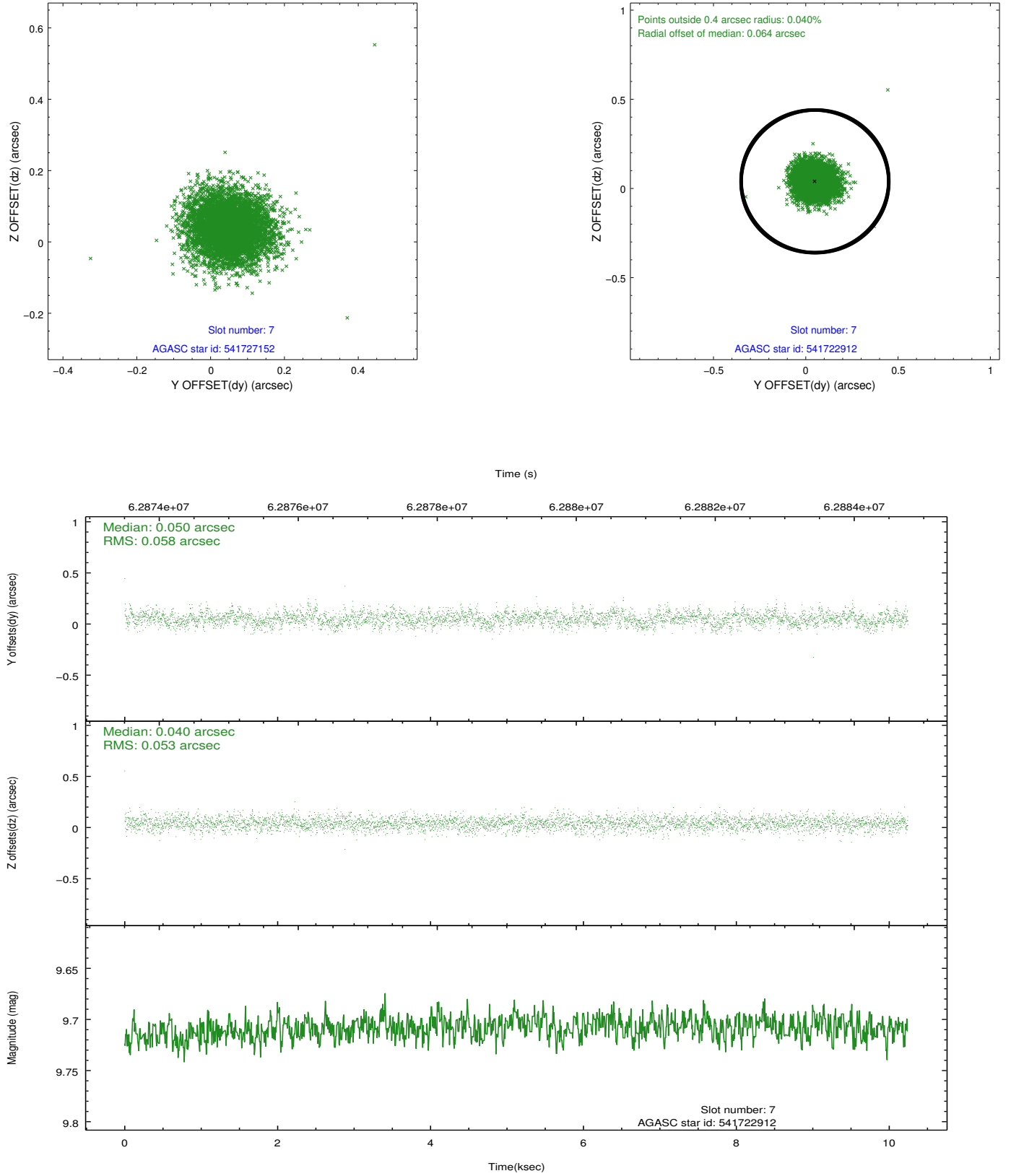
2.4.3 Slot 5



2.4.4 Slot 6

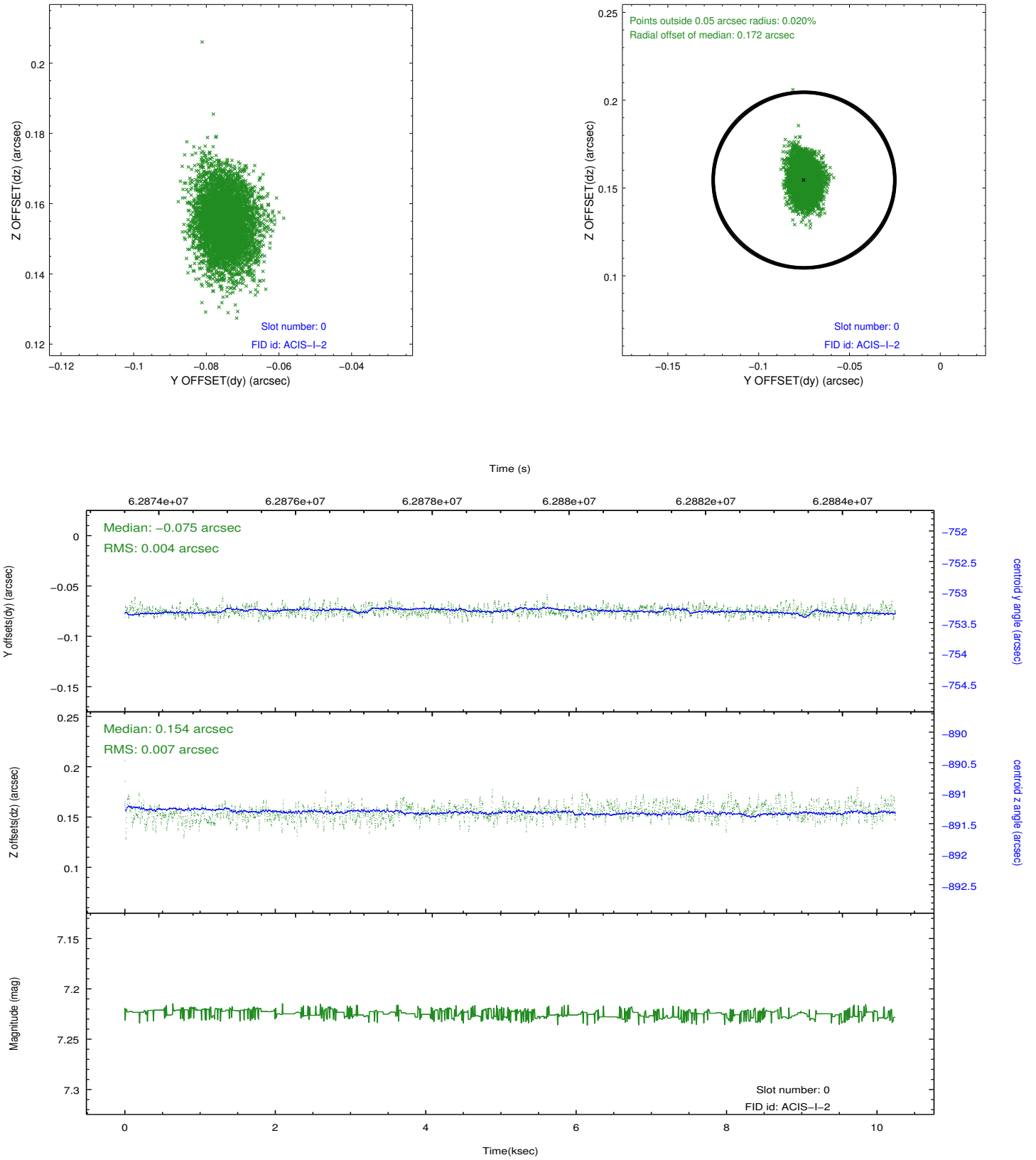


2.4.5 Slot 7

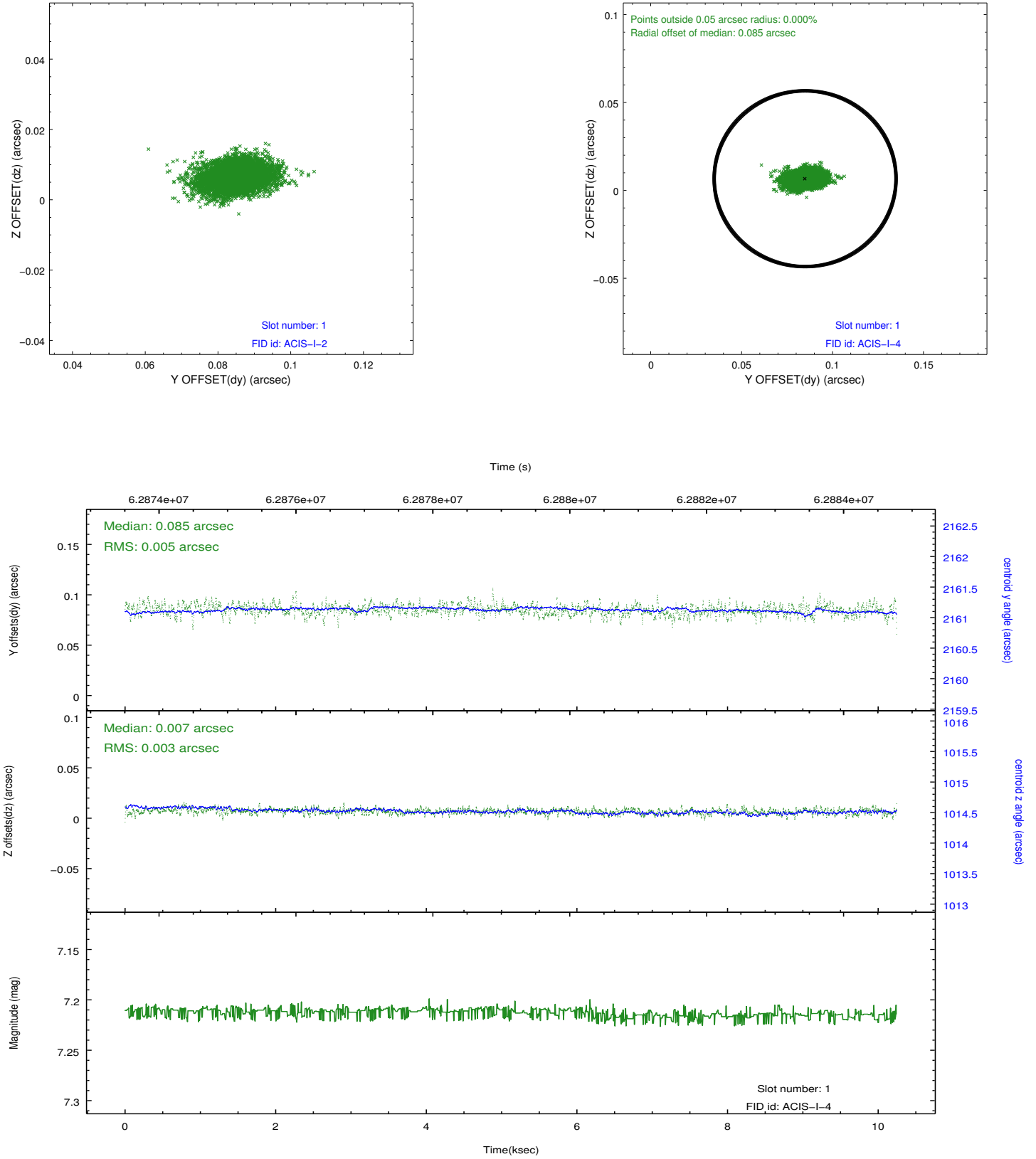


2.5 FID Slots

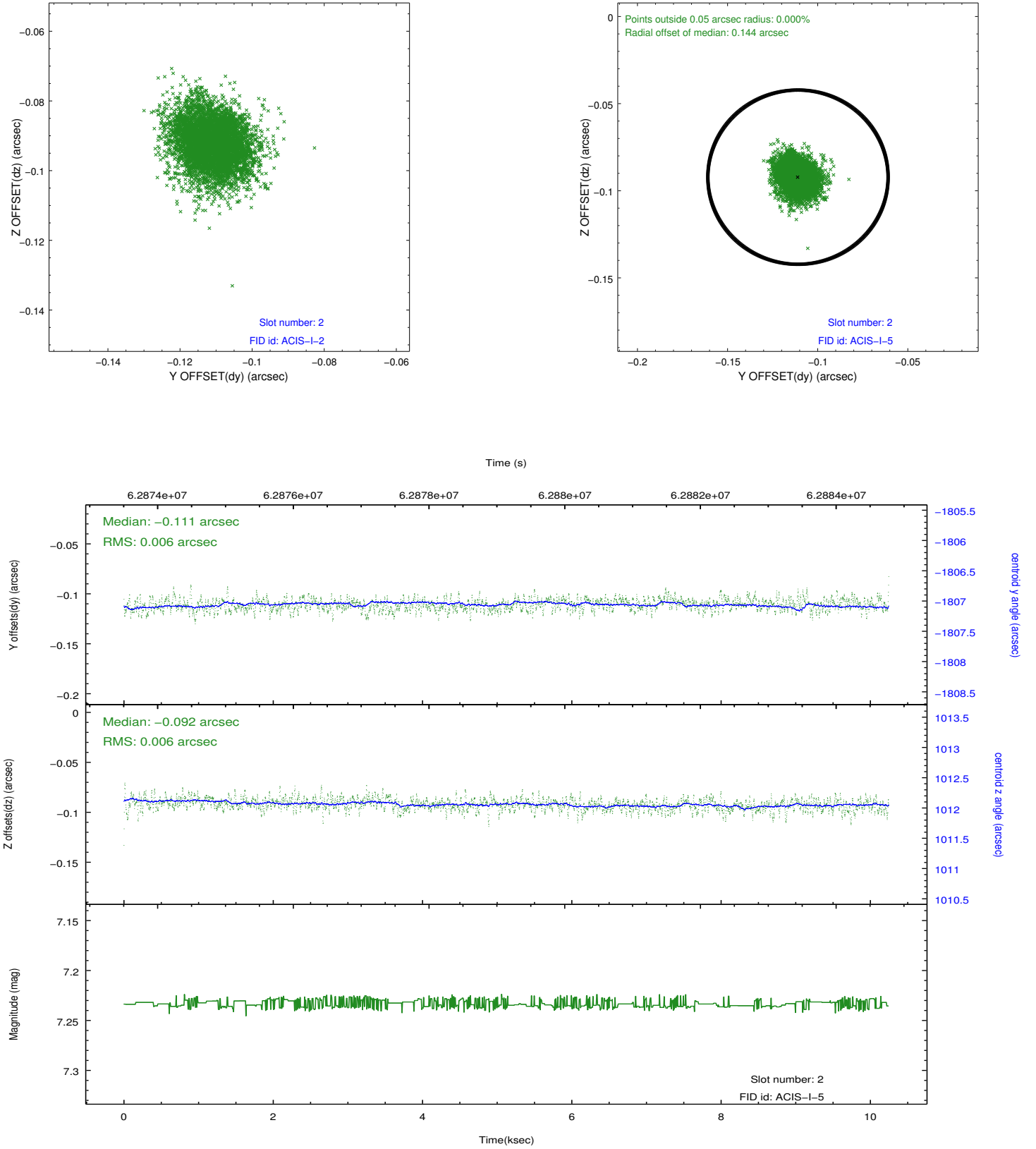
2.5.1 Slot 0



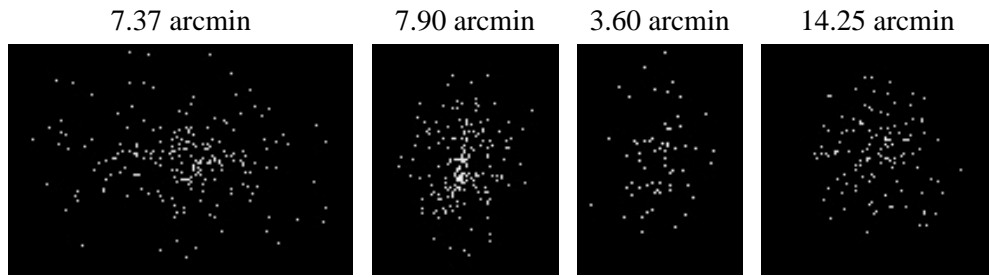
2.5.2 Slot 1



2.5.3 Slot 2



3 Point Sources



A Summary

A.1 Status

V&V Scientist	Beth Sundheim
V&V Date (YYYY-MM-DD)	2009.12.08
V&V Edition	1
V&V Disposition and Status	OK
V&V Charge Time	9.132

A.2 Comments

Focal plane temperature is warmer than -118.7 C degrees during the entire observation. This temperature is the upper limit of the verified ACIS calibration for the front-illuminated chips. The focal plane temperature is also warmer than -116.7 degrees C for the entire observation. This temperature is the upper limit of the verified ACIS calibration for the back-illuminated chips. The ACIS spectral response calibration is less accurate at these warmer temperatures than it is at -119.7 C. Users whose science objectives depend on the most accurate spectral response (ie: fitting line-rich spectra) may notice an effect. Users whose science objectives do not depend on the most accurate spectral response should not notice an effect.