

V&V Reference Report

L2 ASCDS Version : 10.2.4

Observation 52411 - L2 Version 1
Chandra X-Ray Center

L2 Processing Date : Oct 6 2014

Contents

1	Front	2
2	OBI	3
2.1	OBI	3
2.1.1	Images	3
2.1.2	Bias	3
2.1.3	Parameters	4
2.1.4	Events	4
2.2	Compared Parameters	5
2.3	Star Slots	6
2.4	FID Slots	6
A	Summary	7
A.1	Status	7
A.2	Comments	7

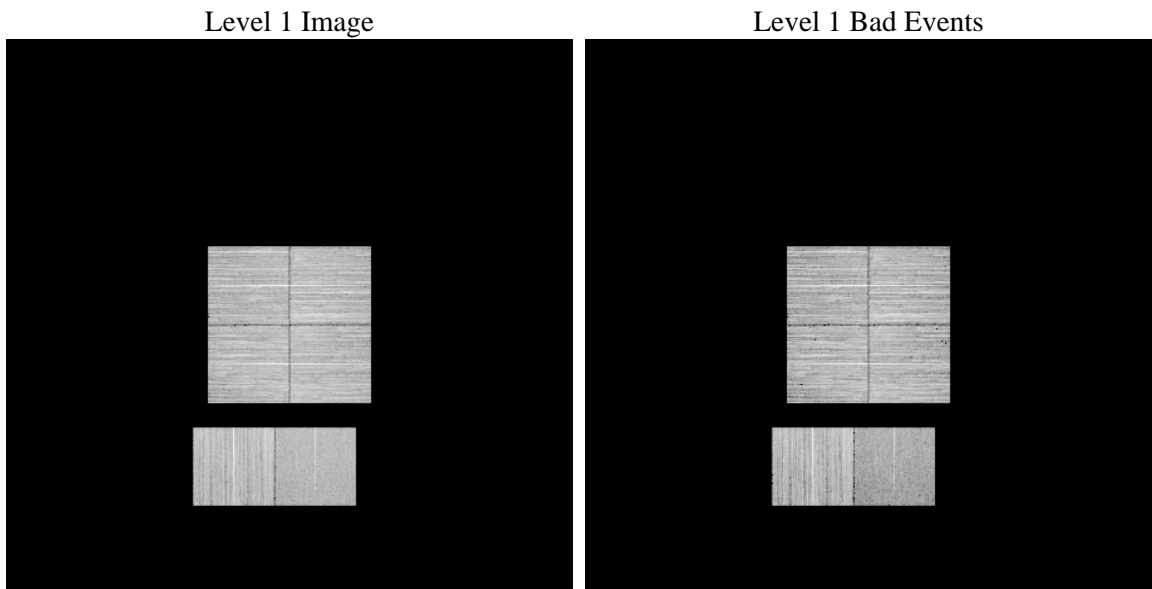
1 Front

seq_num	 	Sequence number
obs_id	52411	Observation id
title	ACIS-012367 diagnostics	Proposal title
observer	CHANDRA engineering request/realtime commanding	Principal investig
object	 	Source name
dtcycle	0	
cycle	P	events from which exps? Prim/Second/Both
ra_targ	0.0	Observer's specified target RA [deg]
dec_targ	0.0	Observer's specified target Dec [deg]
ra_nom	244.76530611946	Nominal RA [deg]
dec_nom	-23.801776351145	Nominal Dec [deg]
roll_nom	258.6460773027	Nominal Roll [deg]
revision	1	Processing version of data
ontime	8465.8285070062	Sum of GTIs [s]
livetime	8358.6290889405	Livetime [s]
ontime0	8465.7874670029	Sum of GTIs [s]
ontime1	8465.7464269996	Sum of GTIs [s]
ontime2	8465.7053869963	Sum of GTIs [s]
ontime3	8465.8695470095	Sum of GTIs [s]
ontime6	8465.664346993	Sum of GTIs [s]
ontime7	8465.8285070062	Sum of GTIs [s]
l2events	168692	Number of level 2 events

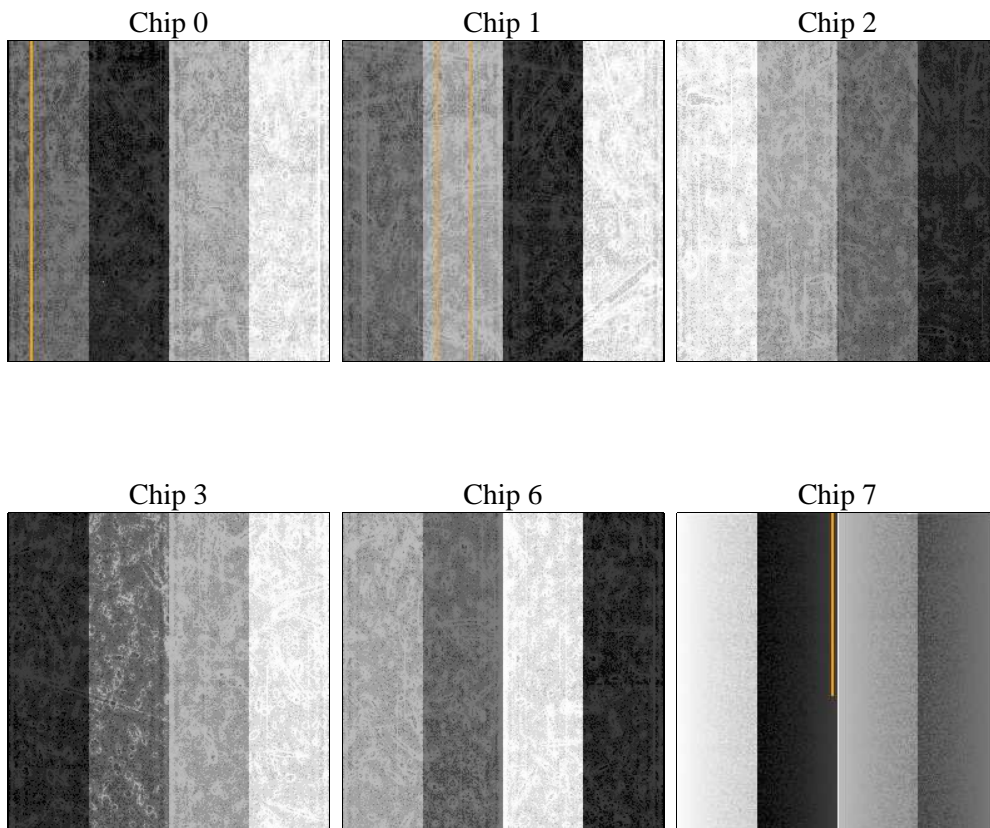
2 OBI

2.1 OBI

2.1.1 Images



2.1.2 Bias



2.1.3 Parameters

obi_num	0	Obi number	sched_exp_time	0.0	[s] Scheduled observation exposure time
ascdsver	10.2.4	Processing system revision	ontime	8465.8285070062	Sum of GTIs [s]
caldsver	4.6.3	 	ontime0	8465.7874670029	Sum of GTIs [s]
date	2014-10-06T19:19:38	Date and time of file creation	ontime1	8465.7464269996	Sum of GTIs [s]
revision	1	Processing version of data	ontime2	8465.7053869963	Sum of GTIs [s]
			ontime3	8465.8695470095	Sum of GTIs [s]
			ontime6	8465.664346993	Sum of GTIs [s]
			ontime7	8465.8285070062	Sum of GTIs [s]
			l1events	860476	Number of level 1 events

2.1.4 Events

	ccd 0	ccd 1	ccd 2	ccd 3	ccd 6	ccd 7		ccd 0	ccd 1	ccd 2	ccd 3	ccd 6	ccd 7
level 1 events	136618	155608	147235	149704	152042	119269	grade 0 events	12505	11918	12866	12893	12512	6825
rejected events	111152	130213	121941	124410	125826	67648		9%	7%	8%	8%	8%	5%
rejected %	81%	83%	82%	83%	82%	56%	grade 1 events	53	53	92	83	42	88
								0%	0%	0%	0%	0%	0%
							grade 2 events	5275	5551	4978	4937	5514	12733
								3%	3%	3%	3%	3%	10%
							grade 3 events	1797	1805	1783	1751	1719	4188
								1%	1%	1%	1%	1%	3%
							grade 4 events	1742	1731	1806	1780	1738	4164
								1%	1%	1%	1%	1%	3%
							grade 5 events	2852	2825	2798	3155	2962	7663
								2%	1%	1%	2%	1%	6%
							grade 6 events	4154	4399	3865	3940	4746	23736
								3%	2%	2%	2%	3%	19%
							grade 7 events	108240	127326	119047	121165	122809	59872
								79%	81%	80%	80%	80%	50%

2.2 Compared Parameters

Parameter	Planned	Actual	Parameter	Planned	Actual
Instrument	ACIS	ACIS	Obspar format version number	7	7
Detector	ACIS-012367	ACIS-012367	Obspar file type	PREDICTED	ACTUAL
Grating	NONE	NONE	Obspar update status	NONE	UPDATED
Data mode	FAINT	FAINT	Number of optional ACIS chips dropped	0	0
Observation mode	SECONDARY	SECONDARY	On-chip summing requested	N	N
[deg] Pointing RA	0	244.7653061194604	Subarray requested	NONE	NONE
[deg] Pointing Dec	0	-23.80177635114539	Alternating exposures requested	N	N
[deg] Pointing Roll	0.0	258.6460773027042	[s] Primary exposure time	3.2	3.2
[mm] SIM focus pos	-1.429586	-1.428180813131781			
[mm] SIM defocus	0.1037507710433287	0.1051558262725154			
[mm] SIM translation stage pos	250.455976	250.466033080201			
[mm] SIM translation stage offset	0	-0.01005468664627074			
[s] Observation start time (MET)	528951041.621625	528951040.59662			
Observation start date	2014-10-06T02:50:42	2014-10-06T02:50:40			
[s] Observation end time (MET)	528960479.822149	528960478.79715			
Observation end date	2014-10-06T05:28:00	2014-10-06T05:27:58			
Read mode	TIMED	TIMED			

2.3 Star Slots

2.4 FID Slots

A Summary

A.1 Status

V&V Scientist	Beth Sundheim
V&V Date (YYYY-MM-DD)	2014.10.06
V&V Edition	1
V&V Disposition and Status	OK
V&V Charge Time	8.4658285070062

A.2 Comments