

V&V Reference Report

L2 ASCDS Version : 7.6.7.1

Observation 5031 - L2 Version 001
Chandra X-Ray Center

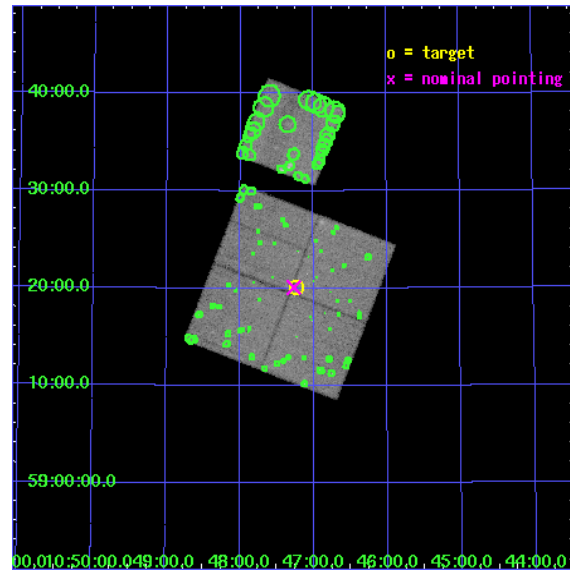
L2 Processing Date : Apr 16 2006

Contents

1	Front	2
2	OBI	3
2.1	OBI	3
2.1.1	Images	3
2.1.2	Bias	3
2.1.3	Parameters	4
2.1.4	Events	4
2.2	Compared Parameters	5
2.3	Aspect	6
2.4	Star Slots	9
2.4.1	Slot 3	9
2.4.2	Slot 4	10
2.4.3	Slot 5	11
2.4.4	Slot 6	12
2.4.5	Slot 7	13
2.5	FID Slots	14
2.5.1	Slot 0	14
2.5.2	Slot 1	15
2.5.3	Slot 2	16
3	Point Sources	17
A	Summary	18
A.1	Status	18
A.2	Comments	18

1 Front

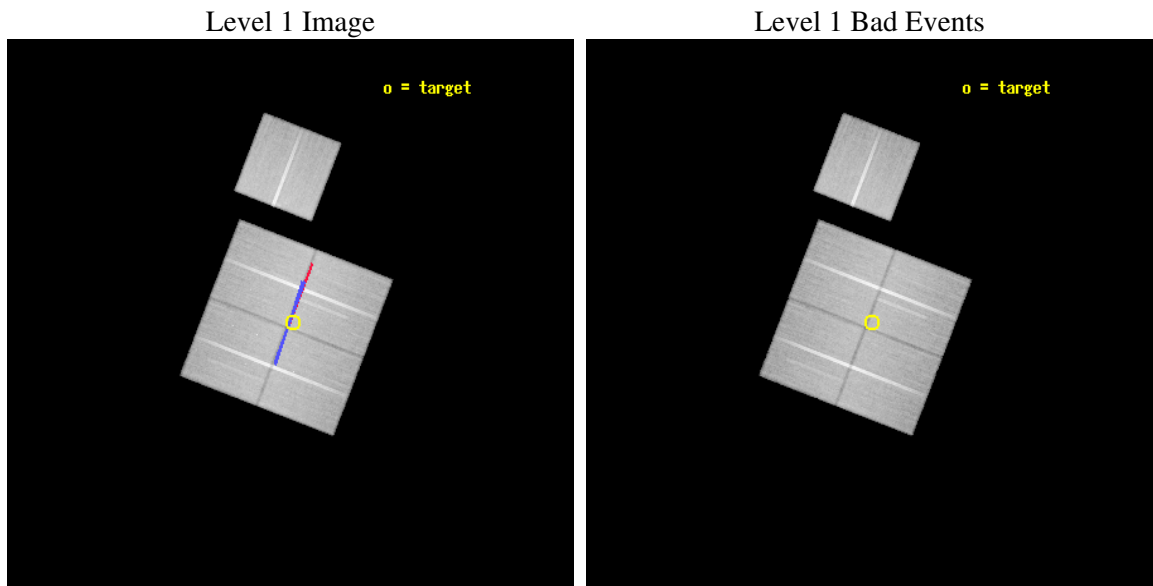
seq_num	900338
obs_id	5031
title	The Balance of Power between Starbursts and AGN: a Chandra/SIRTf Survey.
observer	Dr. BELINDA WILKES
object	SWIRE LOCKMAN 9
dtcycle	0
cycle	P
ra_targ	161.807708
dec_targ	59.335263
ra_nom	161.81678522295
dec_nom	59.335121214687
roll_nom	21.200875666396
revision	2
ontime	66259.2360017
livetime	65393.510303998
ontime0	66259.235961825
ontime1	66259.236071408
ontime2	66262.376971841
ontime3	66259.2360017
ontime6	66259.236001641
l2events	259199



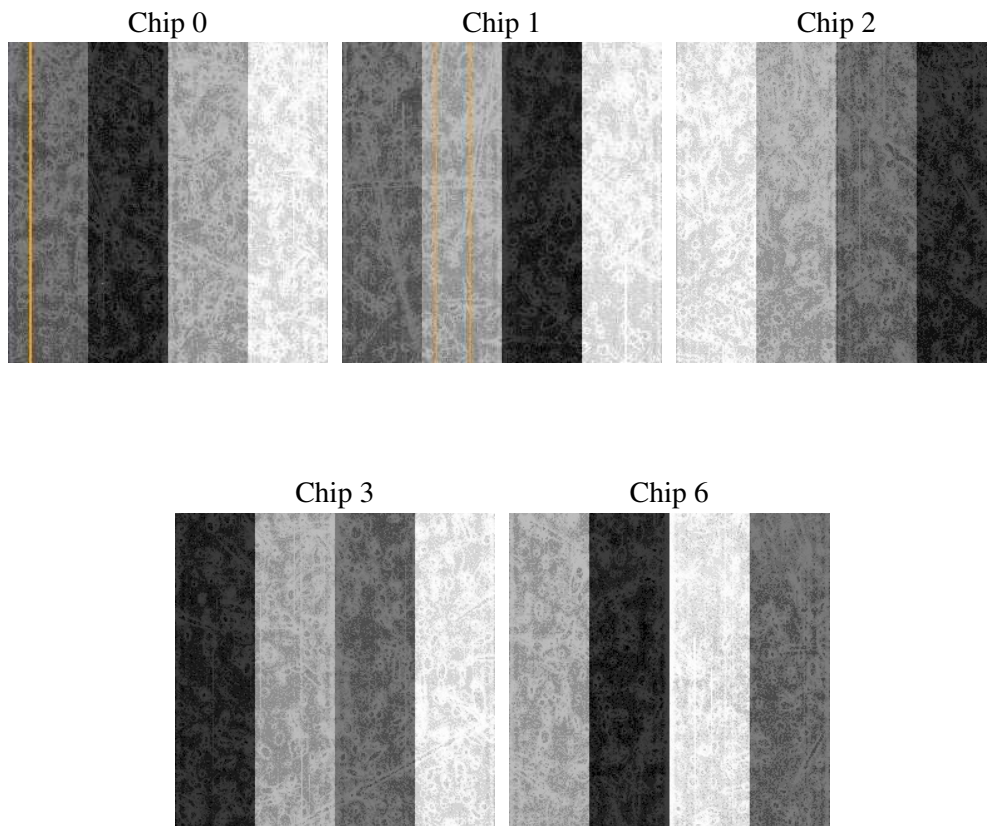
2 OBI

2.1 OBI

2.1.1 Images



2.1.2 Bias



2.1.3 Parameters

obi_num	1
ascdsver	7.6.7.1
caldbver	3.2.1
date	2006-04-16T17:59:55
revision	2

sched_exp_time	66500.000000
ontime	66265.699581742
ontime0	66265.699521929
ontime1	66265.69965145
ontime2	66268.840571761
ontime3	66265.699581742
ontime6	66265.699581683
l1events	2441327

2.1.4 Events

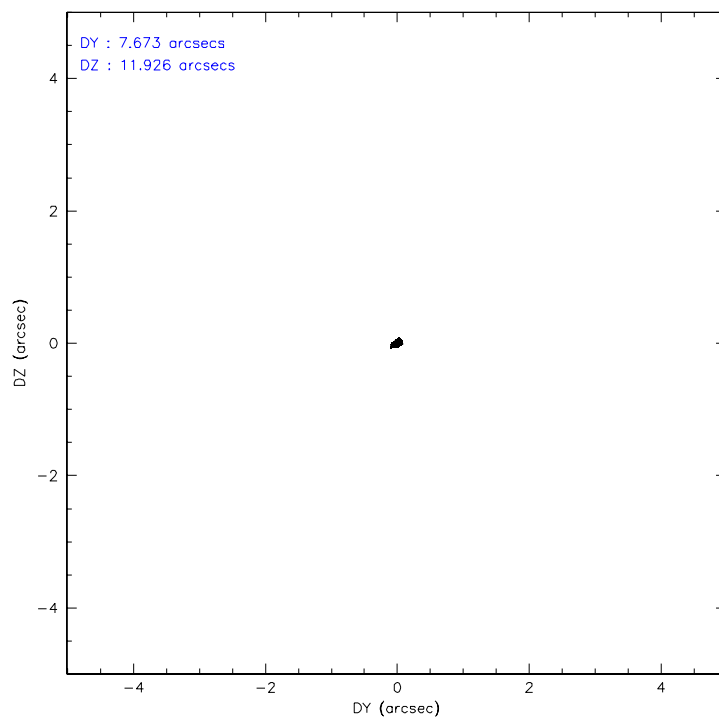
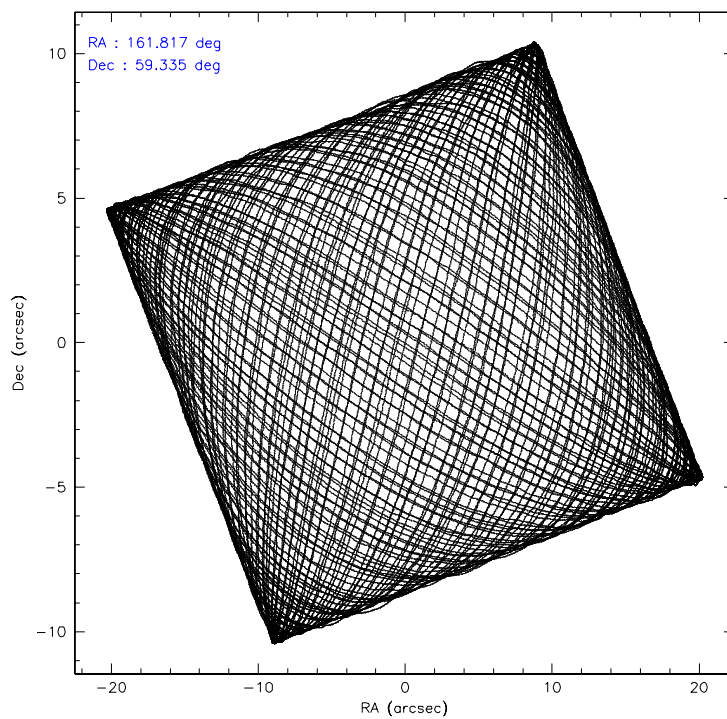
	ccd 0	ccd 1	ccd 2	ccd 3	ccd 6
level 1 events	470720	470934	502863	496785	500025
rejected events	410385	407802	444093	438756	440502
rejected %	87%	86%	88%	88%	88%

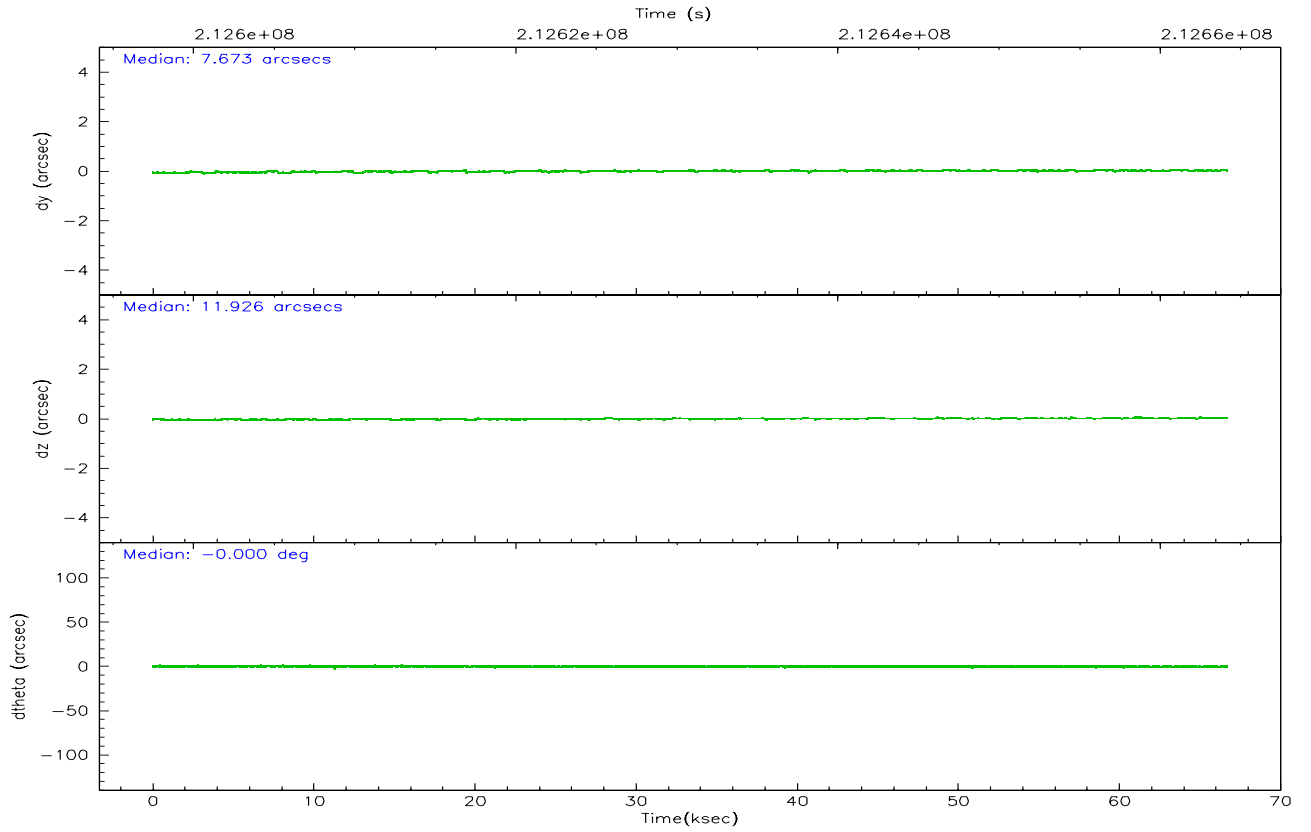
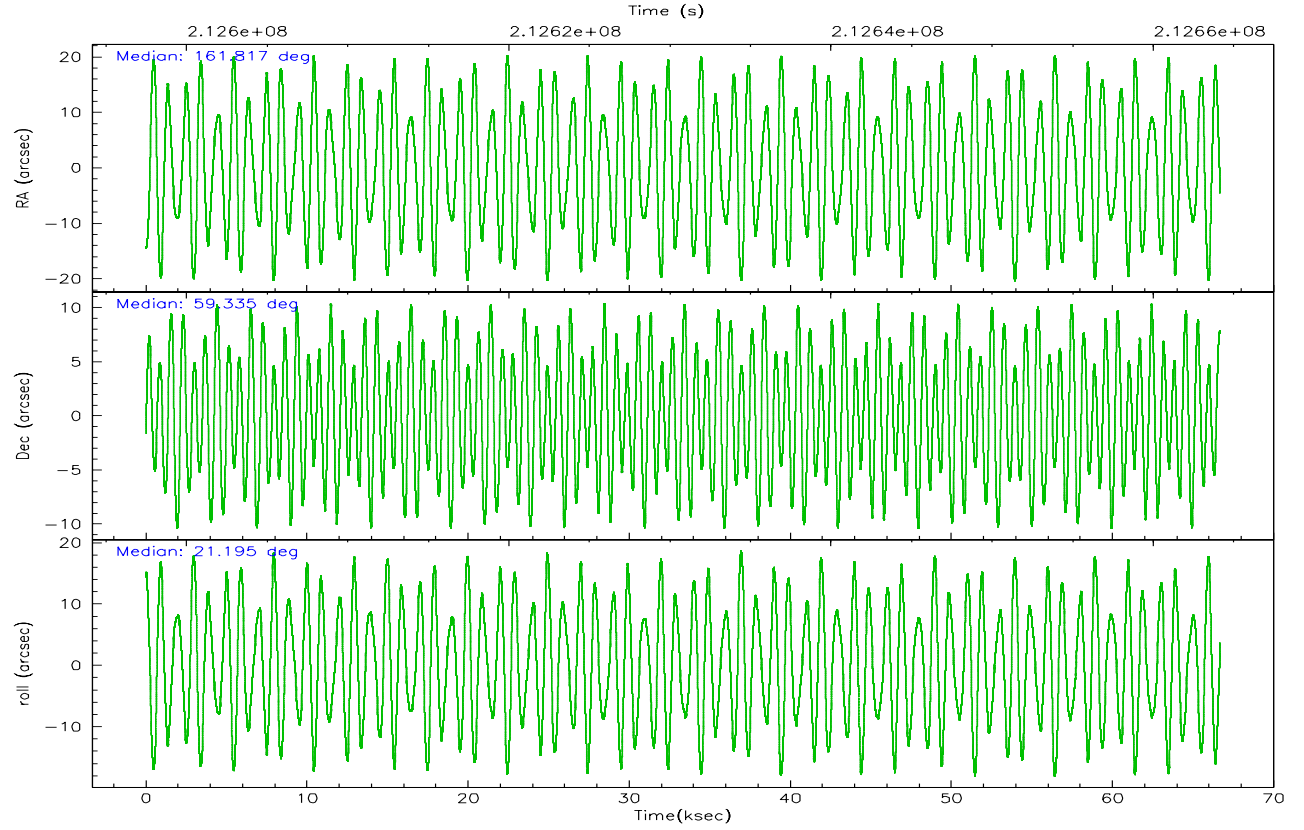
	ccd 0	ccd 1	ccd 2	ccd 3	ccd 6
grade 0 events	25713	24509	26125	25328	24306
	5%	5%	5%	5%	4%
grade 1 events	277	241	319	304	266
	0%	0%	0%	0%	0%
grade 2 events	12963	13846	11996	11003	12058
	2%	2%	2%	2%	2%
grade 3 events	5860	6218	5500	5782	5824
	1%	1%	1%	1%	1%
grade 4 events	5473	6316	5604	5660	5698
	1%	1%	1%	1%	1%
grade 5 events	20441	21113	19428	22323	22606
	4%	4%	3%	4%	4%
grade 6 events	10329	12246	9554	10262	11642
	2%	2%	1%	2%	2%
grade 7 events	389664	386445	424337	416123	417625
	82%	82%	84%	83%	83%

2.2 Compared Parameters

Parameter	Planned	Actual	Parameter	Planned	Actual
Instrument	ACIS	ACIS	Obspar format version number	6	6
Detector	ACIS-01236	ACIS-01236	Obspar file type	PREDICTED	ACTUAL
Grating	NONE	NONE	Obspar update status	NONE	UPDATED
Data mode	VFAINT	VFAINT	On-chip summing requested	N	N
Observation mode	POINTING	POINTING	Subarray requested	NONE	NONE
Pointing RA	161.783333	161.8167852229526	Alternating exposures requested	N	N
Pointing Dec	59.313706	59.33512121468723	Primary exposure time	0.000000	3.1
Pointing Roll	21.020960	21.20087566639642			
Roll angle	19.200000	19.200000			
Roll tolerance	1.800000	1.800000			
Roll constraint allows 180D rotation	Y	Y			
SIM focus pos (mm)	-0.782348	-0.7809083437167272			
SIM defocus (mm)	0	0.001439871863259334			
SIM translation stage pos (mm)	-233.592463	-233.5874344608287			
SIM translation stage offset (mm)	0	-0.005018542100998502			
Observation start time	212597661.184000	212597284.60086			
Observation start date	2004-09-26T14:53:17	2004-09-26T14:48:04			
Observation end time	212664161.184000	212665273.8789			
Observation end date	2004-09-27T09:21:37	2004-09-27T09:41:13			
Read mode	TIMED	TIMED			

2.3 Aspect



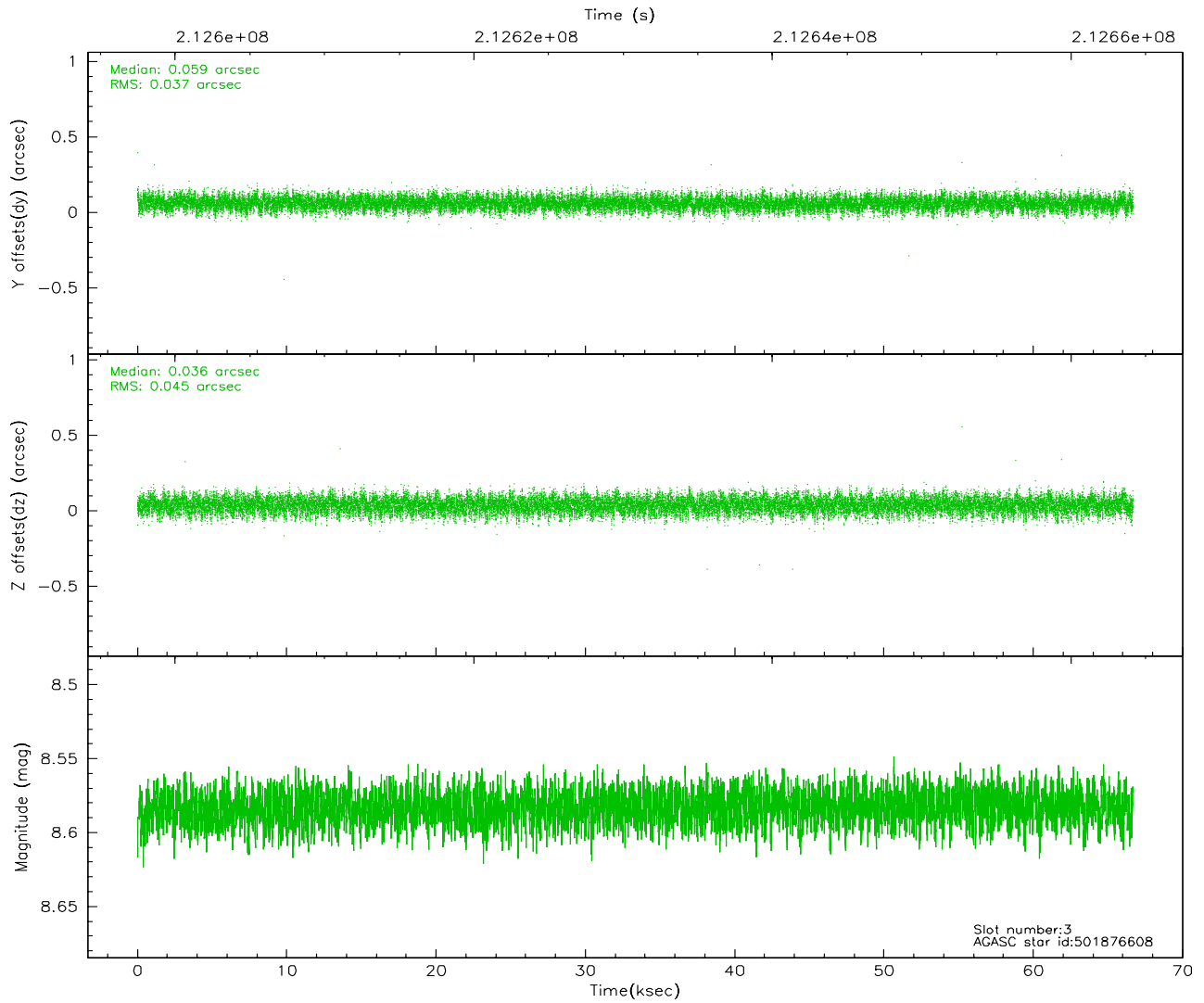
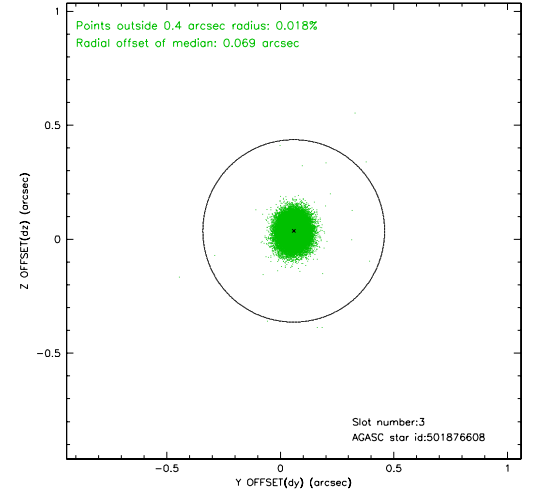
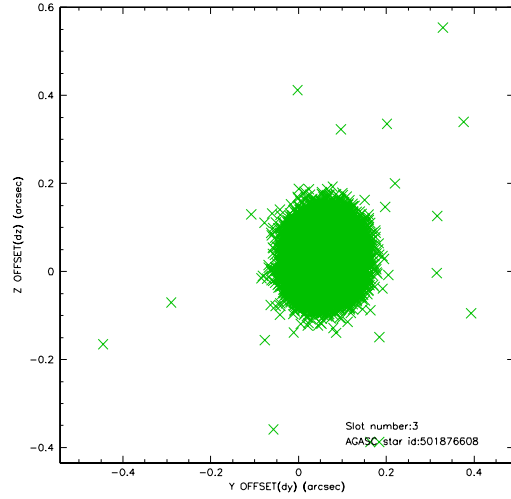


Slot Statistics

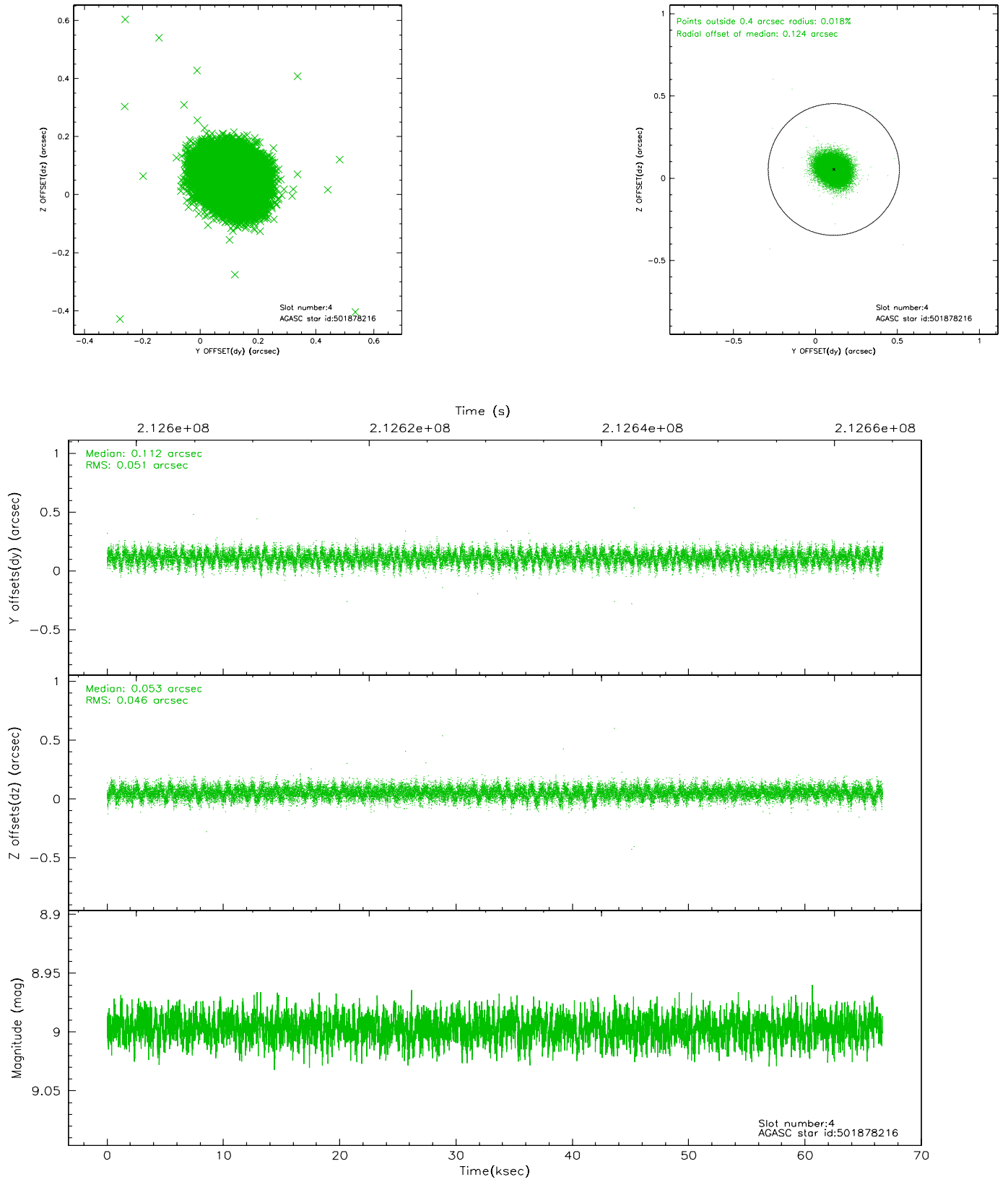
slot	status	id	mag	n_pts	med_dy	med_dz	dr1	dr2	ra	dec	mean_y	mean_z
0	FID	ACIS-I-1	7.24	16264	0.022	0.024	0.006	0.011	0.000000	0.000000	931.99	-835.45
1	FID	ACIS-I-5	7.23	16264	-0.134	0.055	0.006	0.010	0.000000	0.000000	-1816.25	1062.17
2	FID	ACIS-I-6	7.25	16262	0.020	-0.008	0.007	0.011	0.000000	0.000000	397.65	1706.49
3	GUIDE	501876608	8.58	32522	0.059	0.036	0.062	0.098	161.204341	58.717464	-1778.38	-1611.14
4	GUIDE	501878216	9.00	32514	0.112	0.053	0.073	0.117	161.663048	59.249982	-288.57	-134.50
5	GUIDE	501878576	7.86	32526	0.009	-0.003	0.053	0.084	161.532118	59.060873	-759.89	-682.05
6	GUIDE	501878640	8.44	32521	-0.091	0.037	0.084	0.135	163.346309	59.049577	2372.44	-1893.64
7	GUIDE	501880360	8.28	32524	-0.091	-0.123	0.064	0.100	161.850113	59.665463	567.75	1138.44

2.4 Star Slots

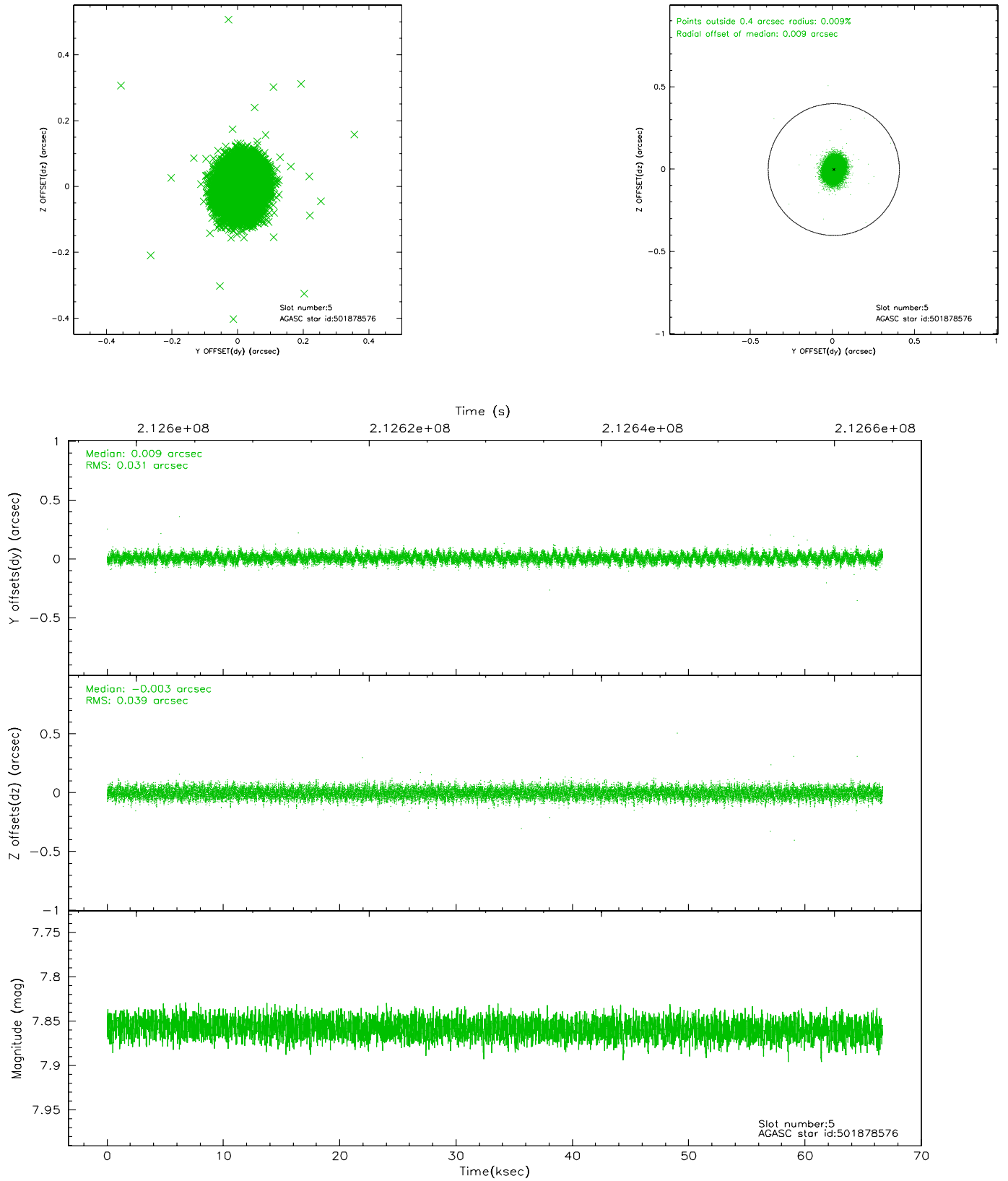
2.4.1 Slot 3



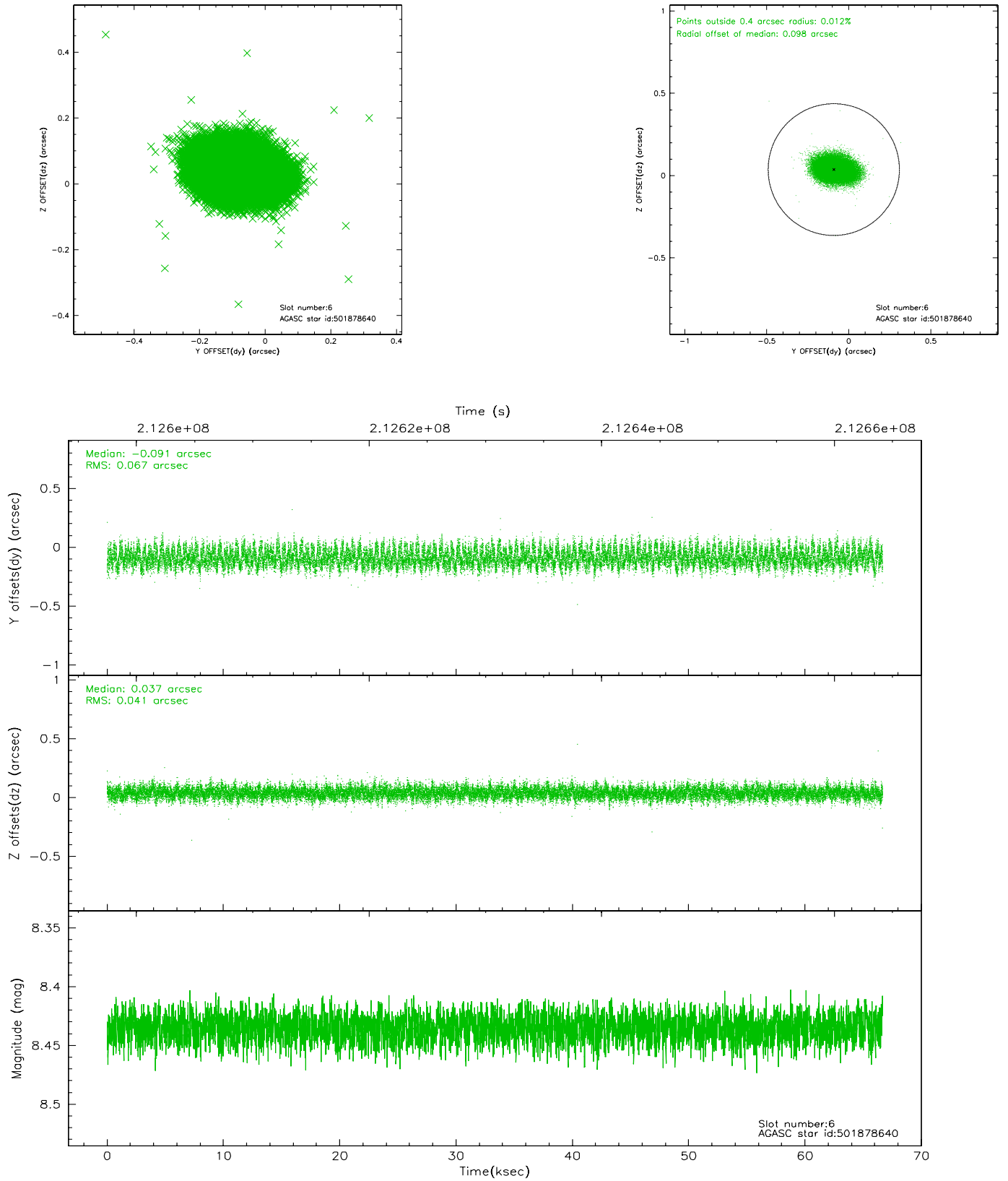
2.4.2 Slot 4



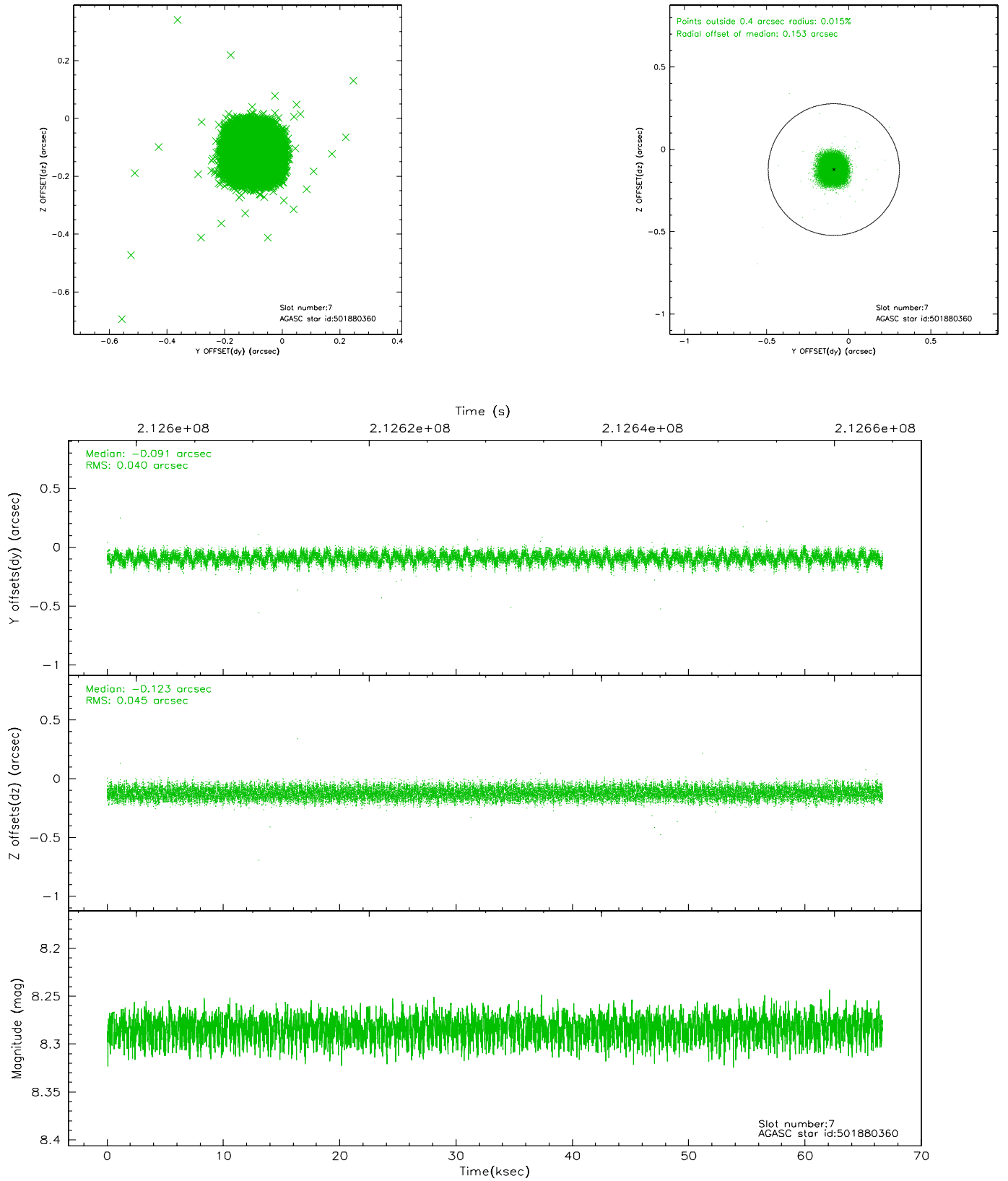
2.4.3 Slot 5



2.4.4 Slot 6

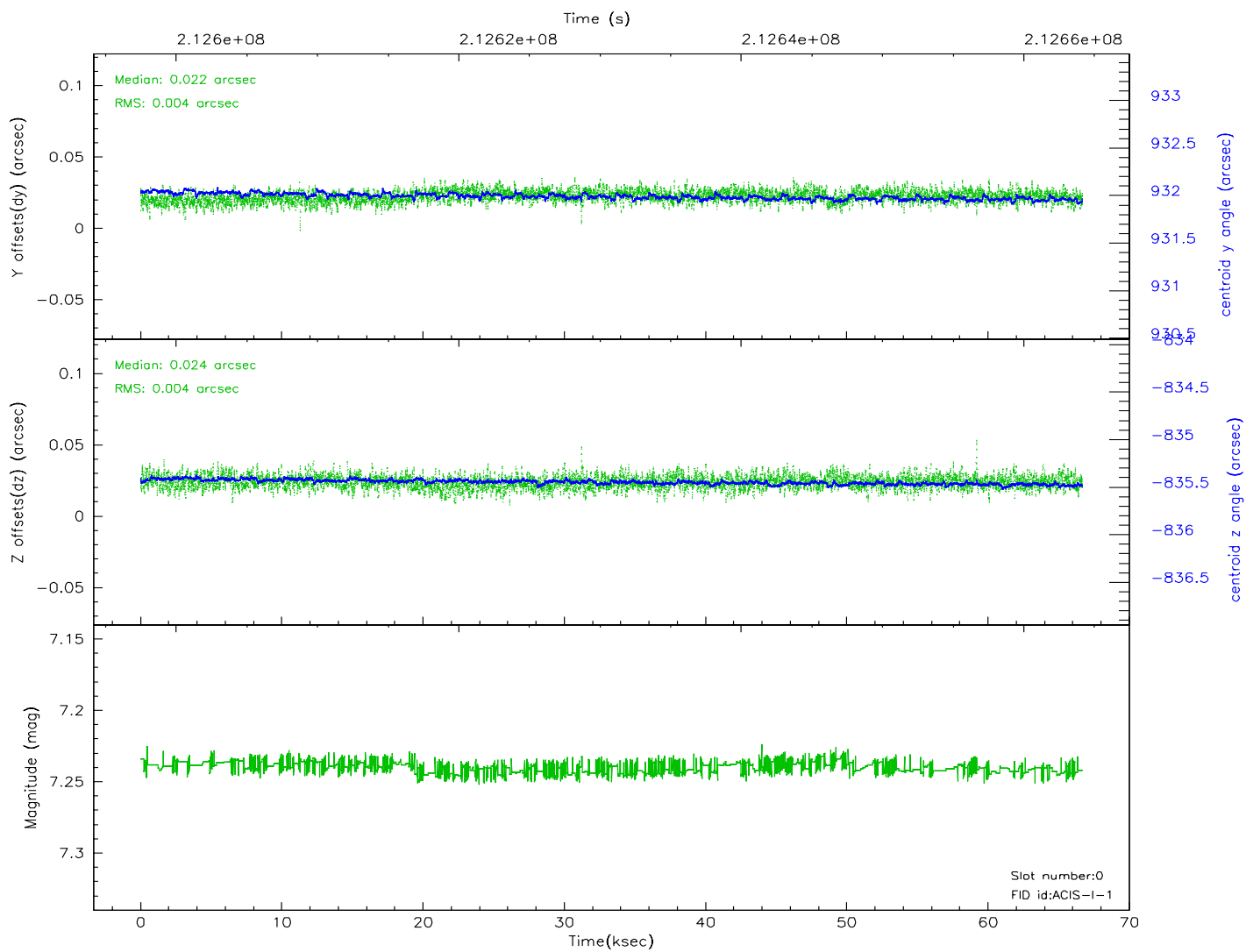
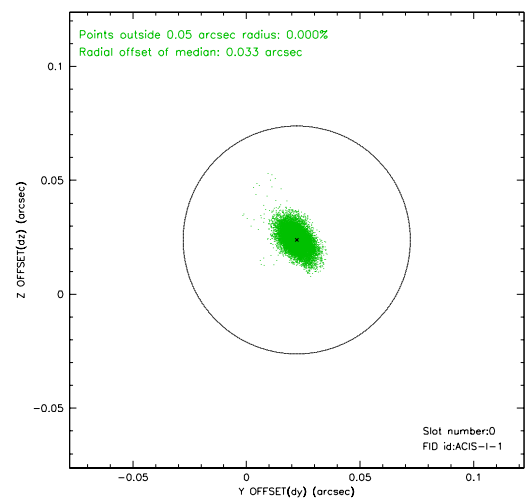
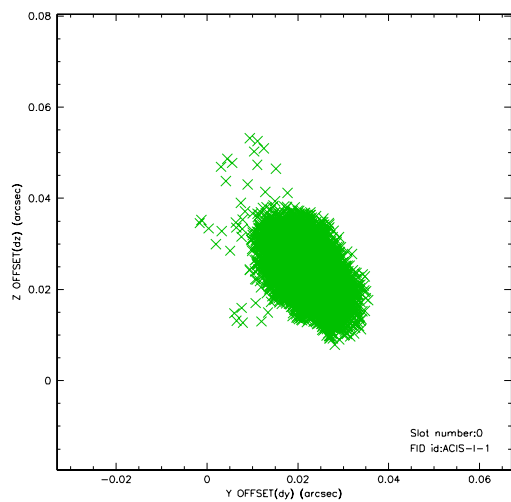


2.4.5 Slot 7

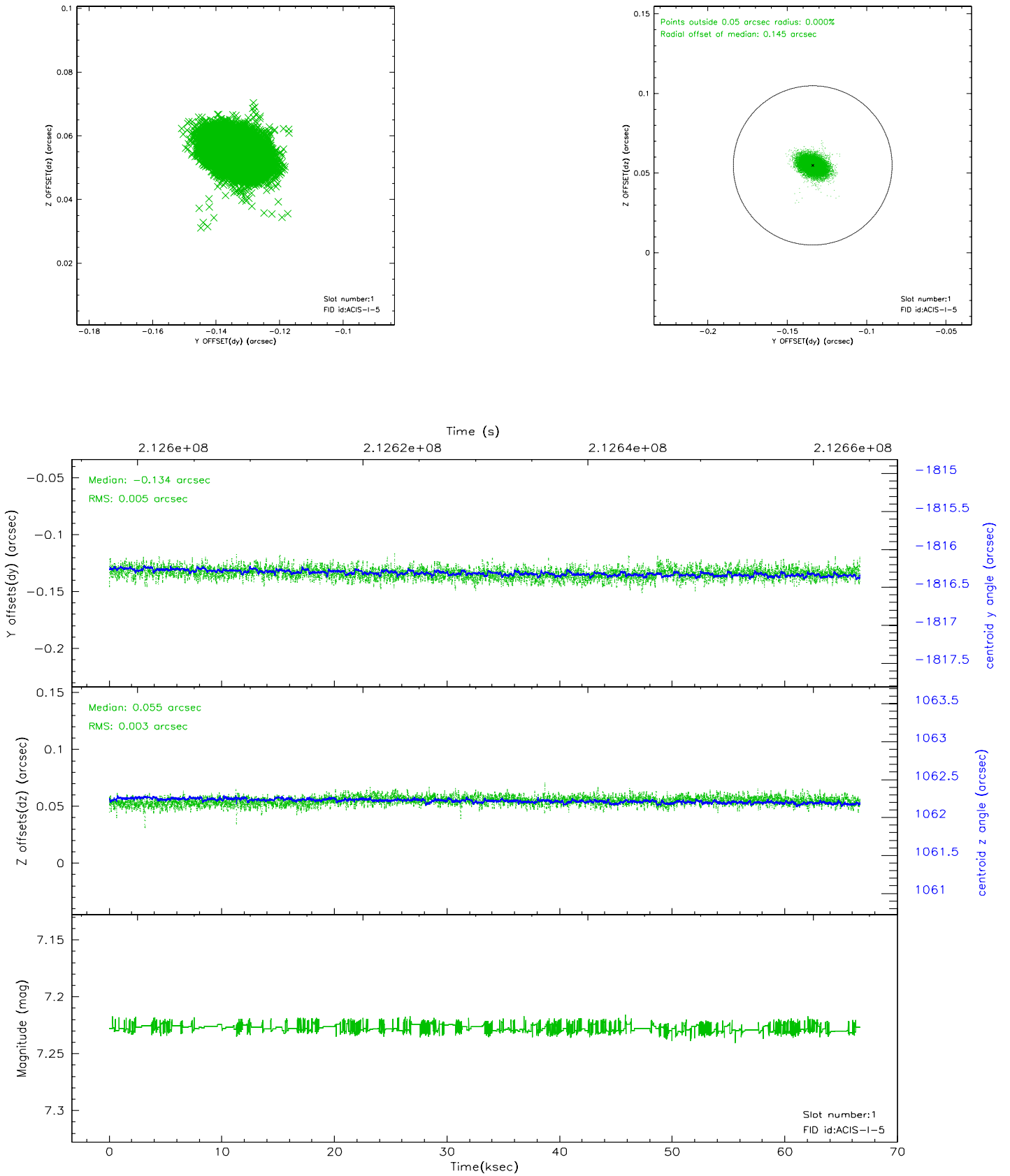


2.5 FID Slots

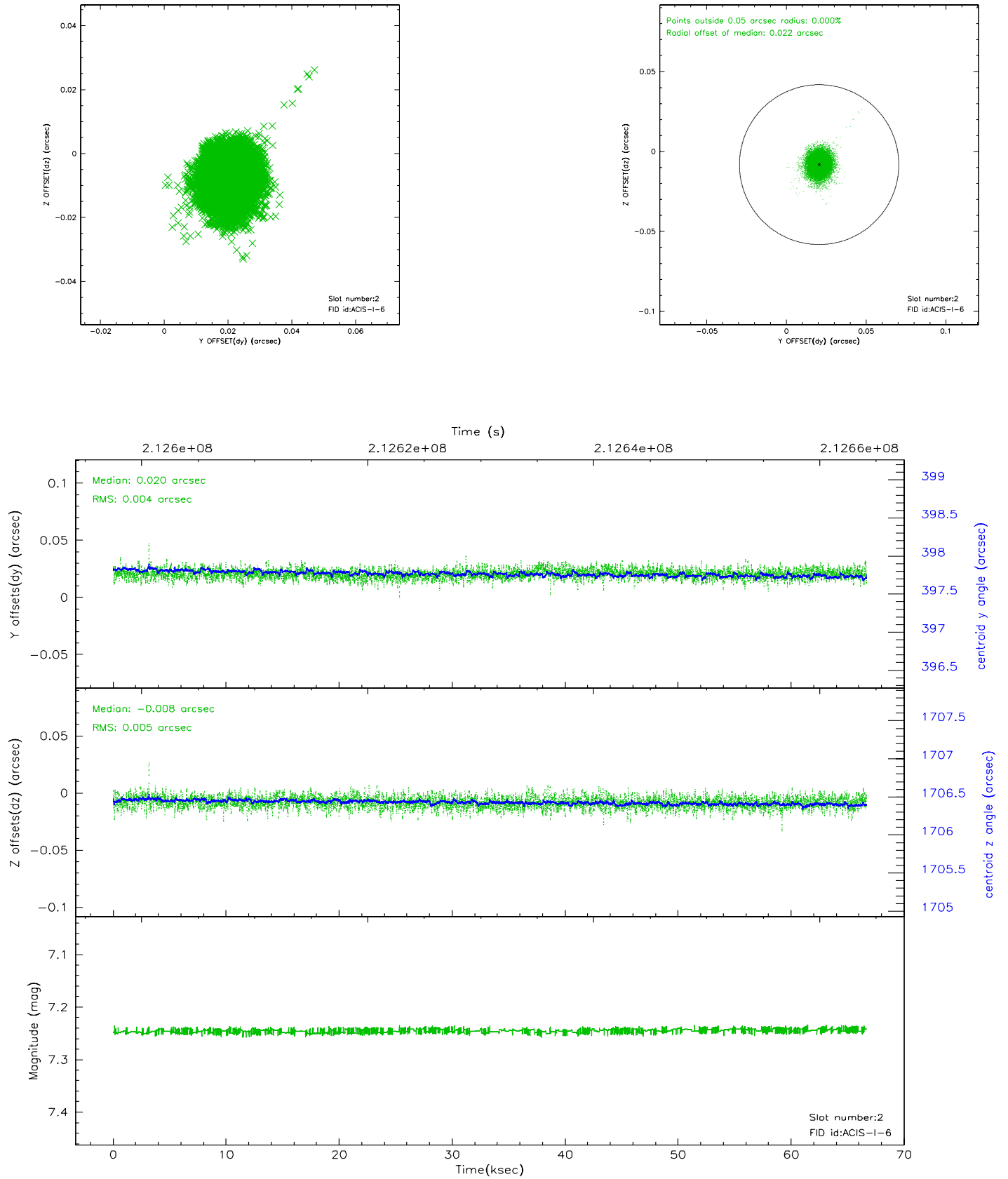
2.5.1 Slot 0



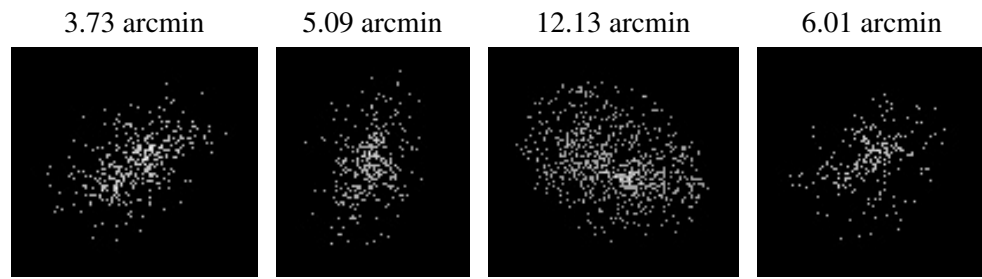
2.5.2 Slot 1



2.5.3 Slot 2



3 Point Sources



A Summary

A.1 Status

V&V Scientist	Jen Lauer
V&V Date (YYYY-MM-DD)	2006.04.17
V&V Edition	1
V&V Disposition and Status	OK
V&V Charge Time	66.259

A.2 Comments

Roll constraint not met: roll is 0.2 degrees outside roll constraint range.