

V&V Reference Report

L2 ASCDS Version : 8.4.5

Observation 5011 - L2 Version 3
Chandra X-Ray Center

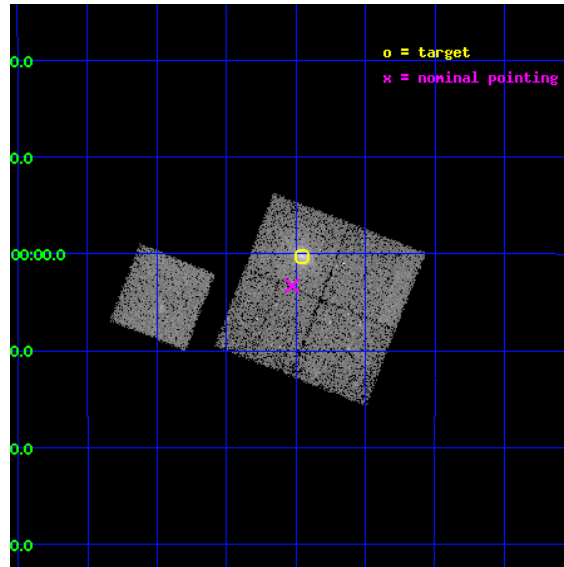
L2 Processing Date : Nov 8 2012

Contents

1	Front	2
2	OBI	3
2.1	OBI	3
2.1.1	Images	3
2.1.2	Bias	3
2.1.3	Parameters	4
2.1.4	Events	4
2.2	Compared Parameters	5
2.3	Aspect	6
2.4	Star Slots	9
2.4.1	Slot 3	9
2.4.2	Slot 4	10
2.4.3	Slot 5	11
2.4.4	Slot 6	12
2.4.5	Slot 7	13
2.5	FID Slots	14
2.5.1	Slot 0	14
2.5.2	Slot 1	15
2.5.3	Slot 2	16
A	Summary	17
A.1	Status	17
A.2	Comments	17

1 Front

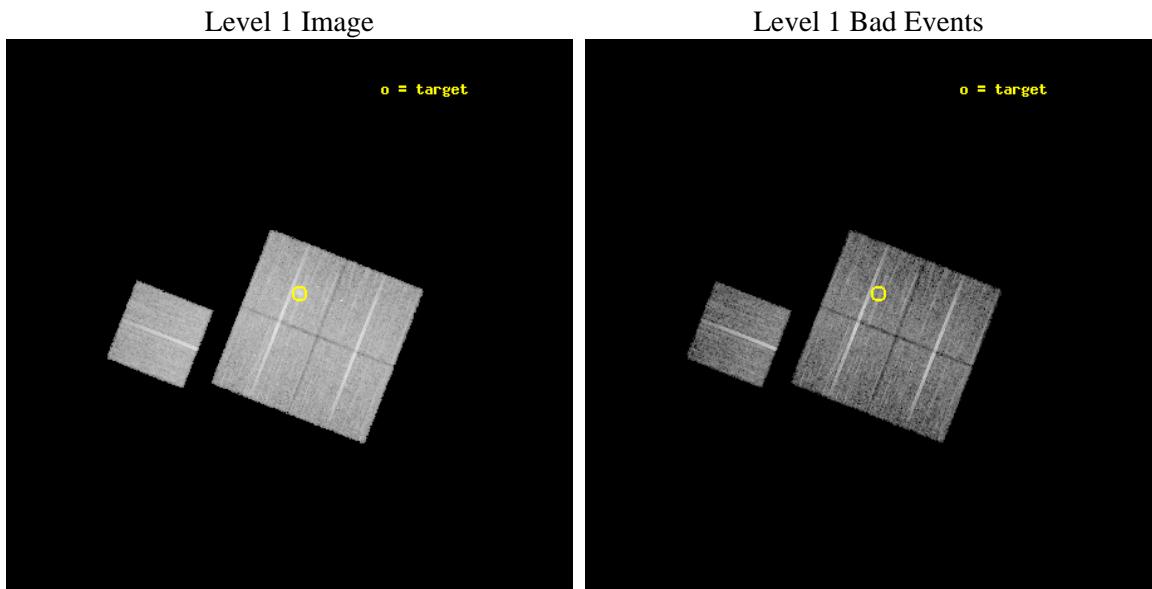
seq_num	800454	Sequence number
obs_id	5011	Observation id
title	Cluster studies: Determination of H0/q0	Proposal title
observer	DR. LEON VANSPEYBROECK	Principal investigator
object	MACS2214.9-1359	Source name
dtcycle	0	
cycle	P	events from which exps? Prim/Second/Both
ra_targ	333.73875	Observer's specified target RA [deg]
dec_targ	-14.003889	Observer's specified target Dec [deg]
ra_nom	333.75733423465	Nominal RA [deg]
dec_nom	-14.055132569164	Nominal Dec [deg]
roll_nom	291.45613065937	Nominal Roll [deg]
revision	3	Processing version of data
ontime	18770.49996388	Sum of GTIs [s]
livetime	18525.24956321	Livetime [s]
ontime0	18770.49996388	Sum of GTIs [s]
ontime1	18770.49996388	Sum of GTIs [s]
ontime2	18770.49996388	Sum of GTIs [s]
ontime3	18770.49996388	Sum of GTIs [s]
ontime6	18770.49996388	Sum of GTIs [s]
l2events	53082	Number of level 2 events



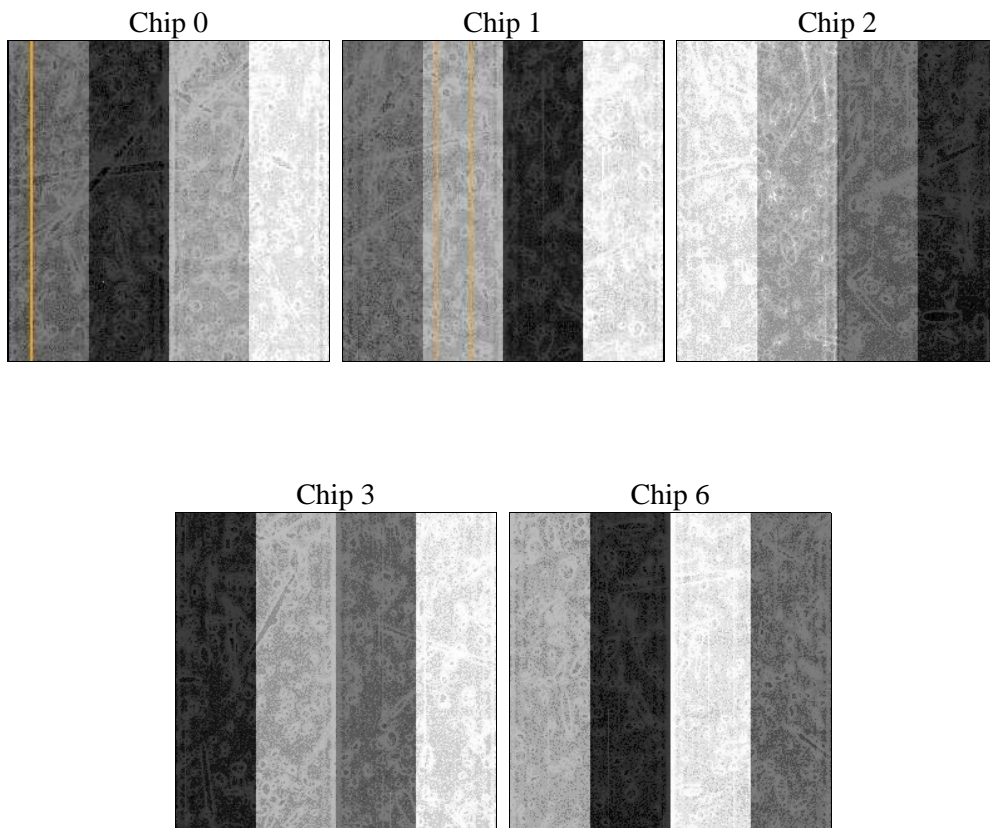
2 OBI

2.1 OBI

2.1.1 Images



2.1.2 Bias



2.1.3 Parameters

obi_num	0	Obi number	sched_exp_time	18627.307000	[s] Scheduled observation exposure time
ascdsver	8.4.5	Processing system revision	ontime	18770.49996388	Sum of GTIs [s]
caldsver	4.5.2	 	ontime0	18770.49996388	Sum of GTIs [s]
date	2012-11-08T02:14:17	Date and time of file creation	ontime1	18770.49996388	Sum of GTIs [s]
revision	3	Processing version of data	ontime2	18770.49996388	Sum of GTIs [s]
			ontime3	18770.49996388	Sum of GTIs [s]
			ontime6	18770.49996388	Sum of GTIs [s]
			l1events	407042	Number of level 1 events

2.1.4 Events

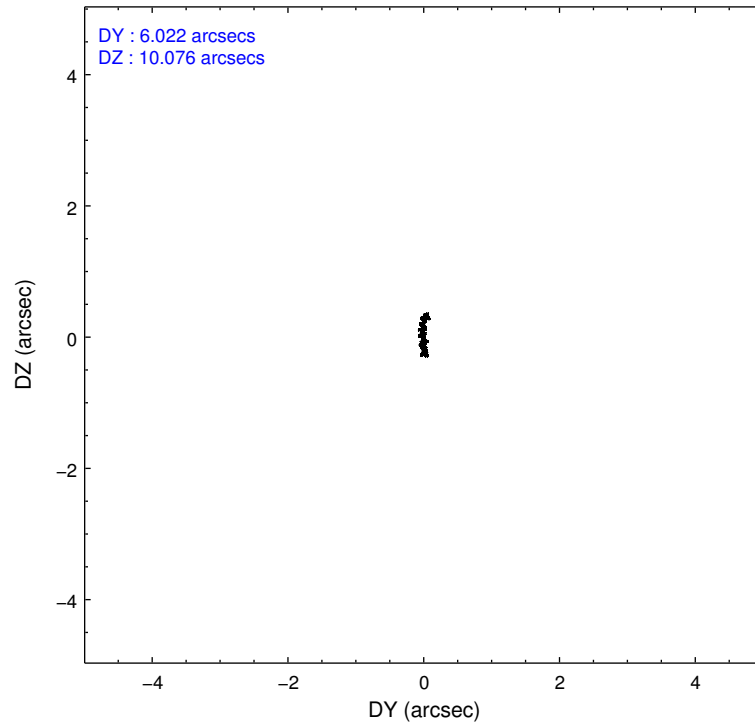
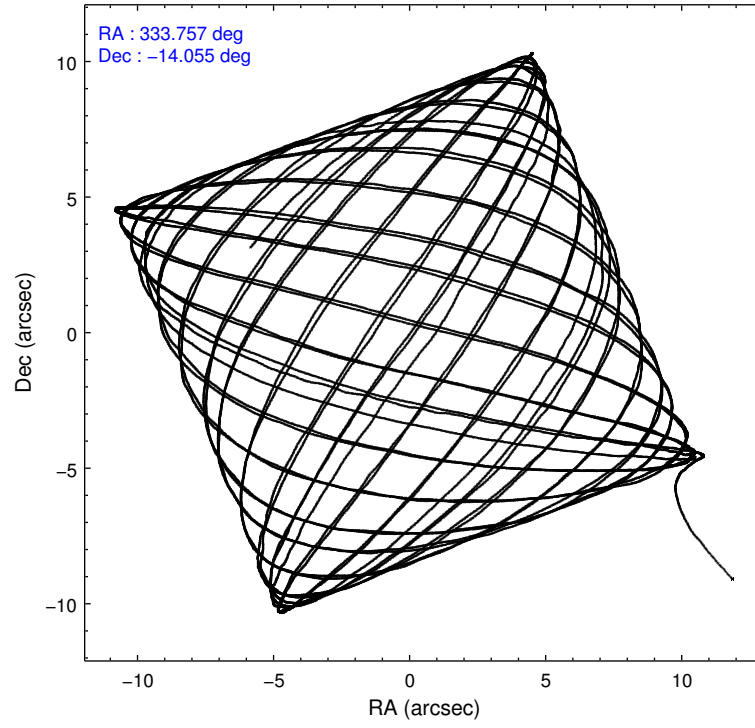
	ccd 0	ccd 1	ccd 2	ccd 3	ccd 6
level 1 events	74820	77664	84590	87731	82237
rejected events	64270	65336	74356	72810	69473
rejected %	85%	84%	87%	82%	84%

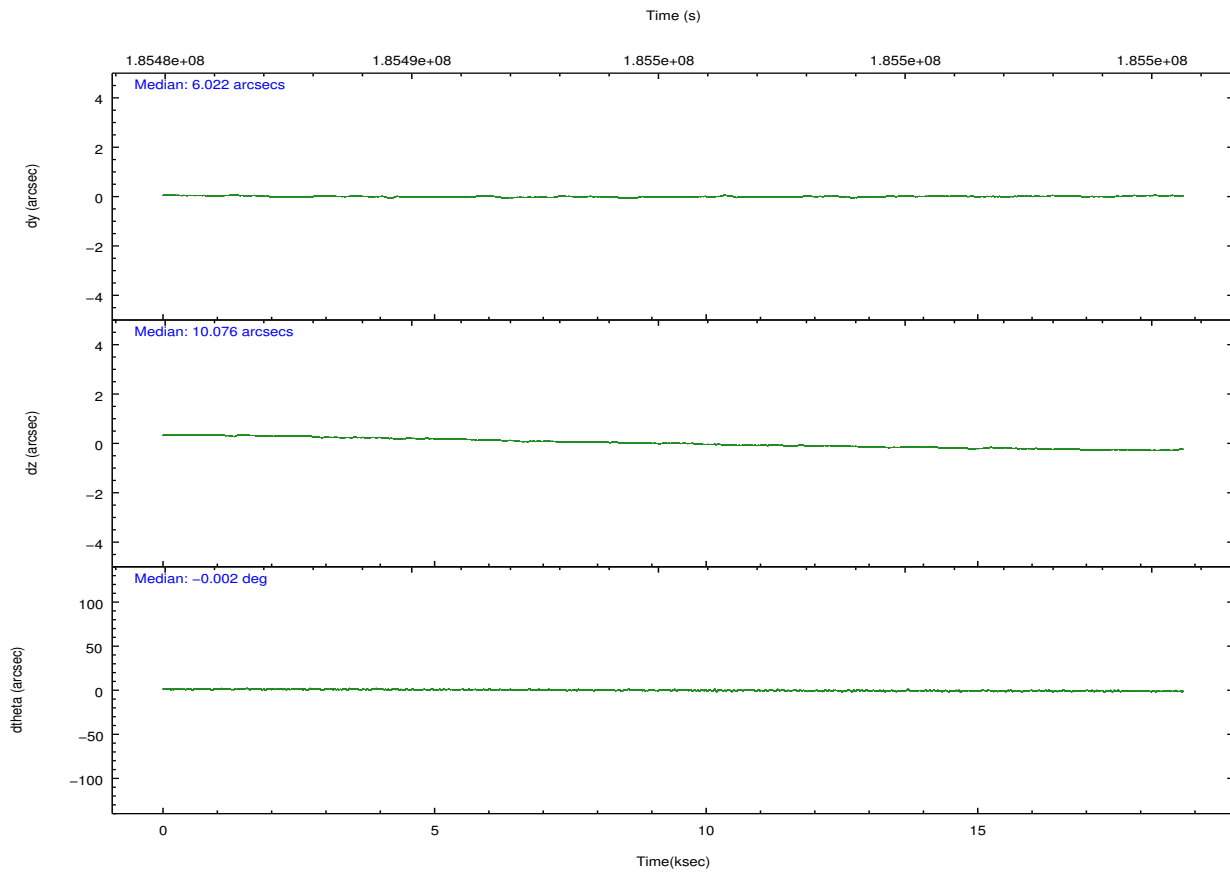
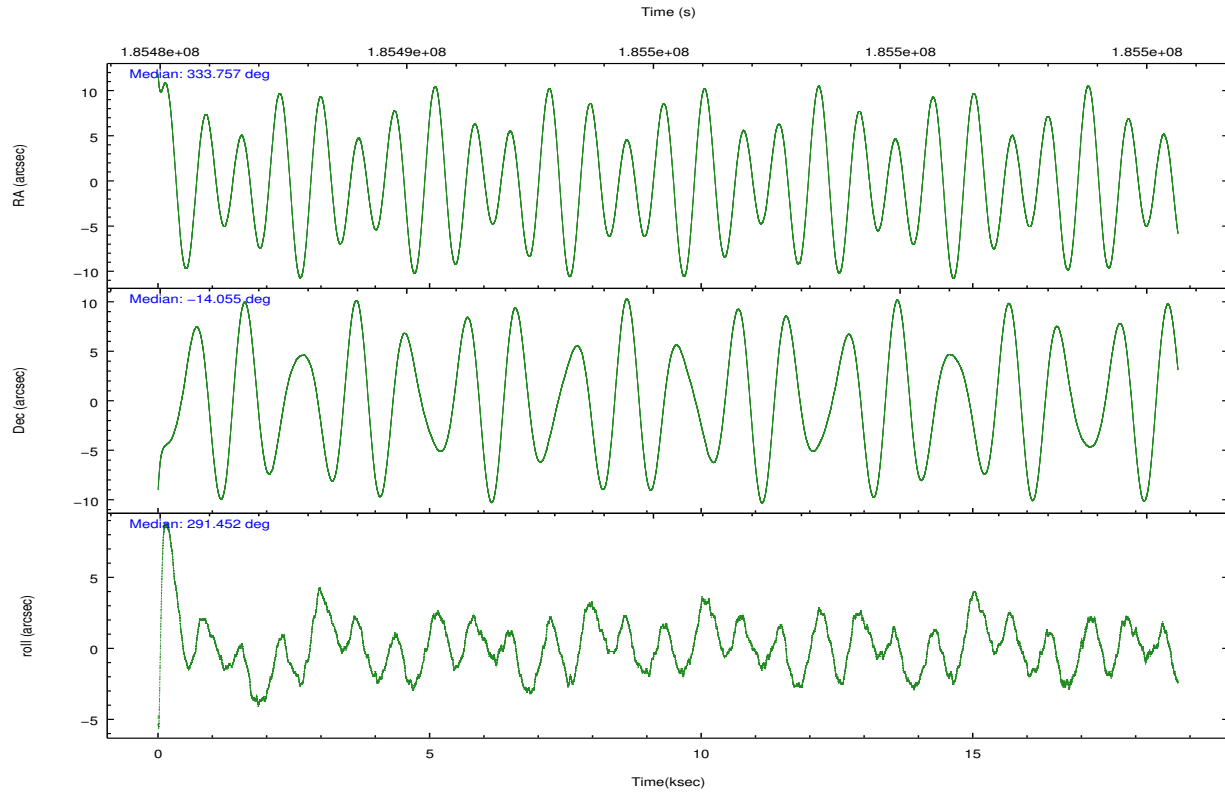
	ccd 0	ccd 1	ccd 2	ccd 3	ccd 6
grade 0 events	5034	5906	4982	8663	6746
	6%	7%	5%	9%	8%
grade 1 events	46	38	41	59	39
	0%	0%	0%	0%	0%
grade 2 events	2074	2415	2016	2413	2253
	2%	3%	2%	2%	2%
grade 3 events	1030	1090	904	1132	1045
	1%	1%	1%	1%	1%
grade 4 events	903	1135	952	1154	992
	1%	1%	1%	1%	1%
grade 5 events	2902	3137	2844	3291	3347
	3%	4%	3%	3%	4%
grade 6 events	1681	1998	1561	1793	1935
	2%	2%	1%	2%	2%
grade 7 events	61150	61945	71290	69226	65880
	81%	79%	84%	78%	80%

2.2 Compared Parameters

Parameter	Planned	Actual	Parameter	Planned	Actual
Instrument	ACIS	ACIS	Obspar format version number	7	7
Detector	ACIS-01236	ACIS-01236	Obspar file type	PREDICTED	ACTUAL
Grating	NONE	NONE	Obspar update status	NONE	UPDATED
Data mode	VFAINT	VFAINT	Number of optional ACIS chips dropped	0	0
Observation mode	POINTING	POINTING	On-chip summing requested	N	N
[deg] Pointing RA	333.735157	333.7573342346455	Subarray requested	NONE	NONE
[deg] Pointing Dec	-14.038152	-14.05513256916437	Alternating exposures requested	N	N
[deg] Pointing Roll	291.242073	291.4561306593684	[s] Primary exposure time	0.000000	3.1
[mm] SIM focus pos	-0.782348	-0.7809083437167272			
[mm] SIM defocus	0	0.001439871863259334			
[mm] SIM translation stage pos	-225.840463	-225.8433433320239			
[mm] SIM translation stage offset	-7.752	-7.749109670905796			
[s] Observation start time (MET)	185486054.184000	185484897.19476			
Observation start date	2003-11-17T19:53:10	2003-11-17T19:34:57			
[s] Observation end time (MET)	185504682.184000	185504996.42063			
Observation end date	2003-11-18T01:03:38	2003-11-18T01:09:56			
Read mode	TIMED	TIMED			

2.3 Aspect



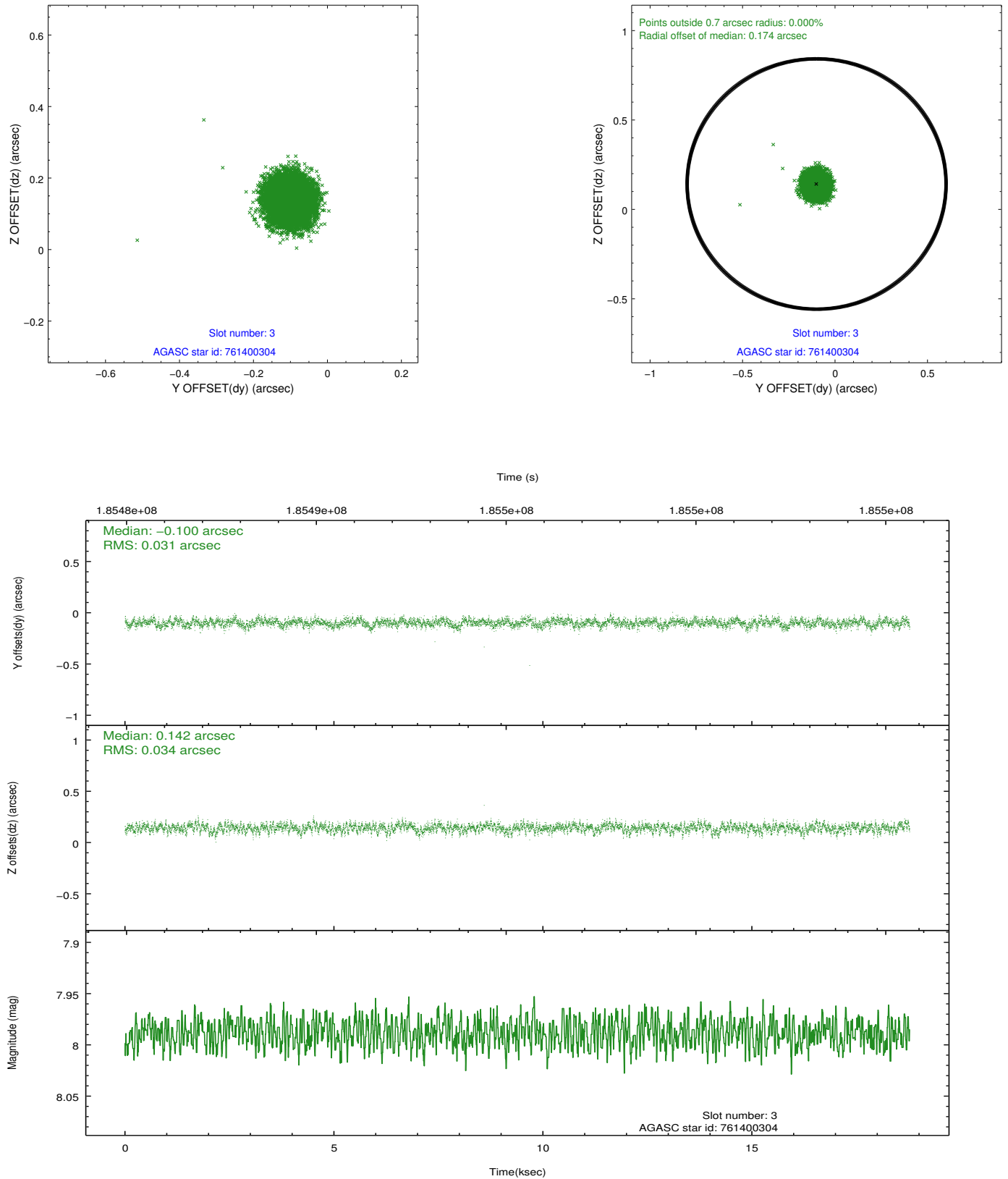


Slot Statistics

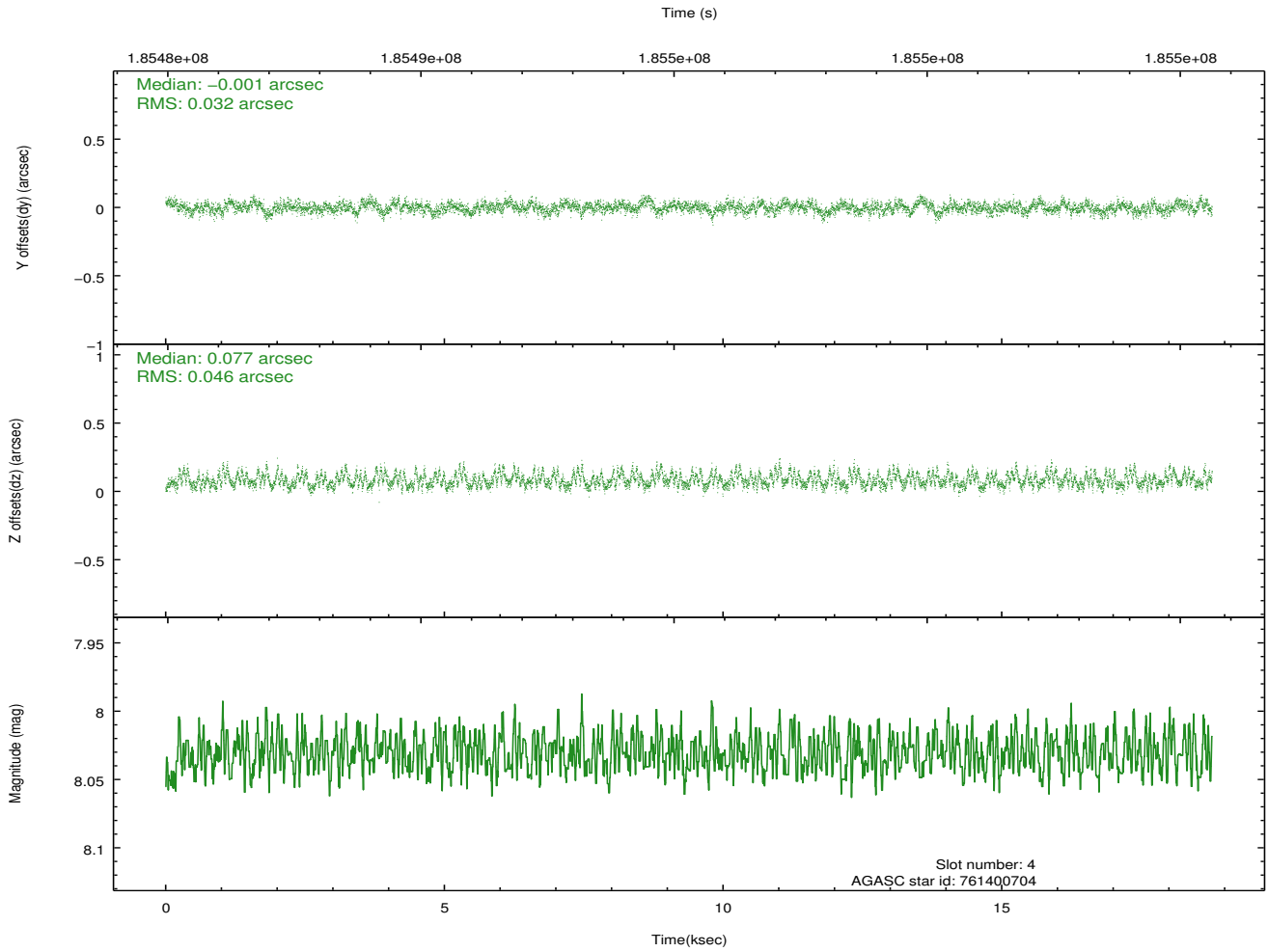
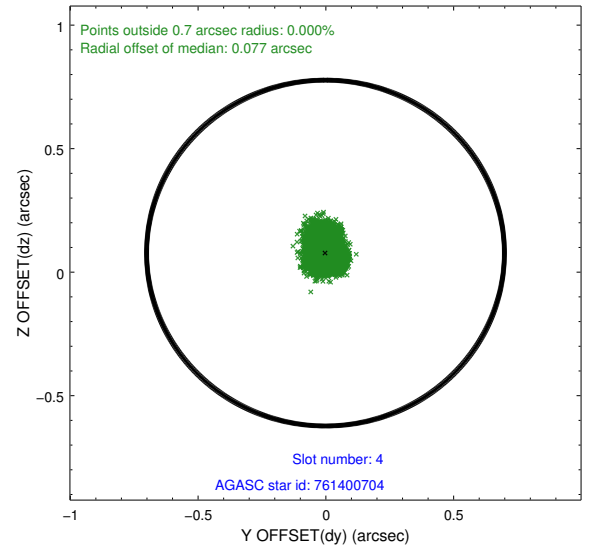
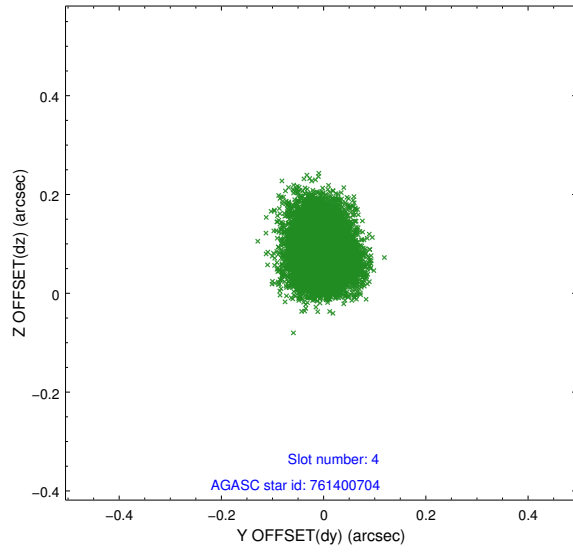
slot	status	id	mag	n_pts	med_dy	med_dz	dr1	dr2	ra	dec	mean_y	mean_z
0	FID	ACIS-I-1	7.23	4580	0.081	-0.070	0.010	0.017	0.000000	0.000000	933.62	-992.72
1	FID	ACIS-I-5	7.22	4580	-0.210	0.078	0.008	0.013	0.000000	0.000000	-1814.66	904.80
2	FID	ACIS-I-6	7.25	4580	0.037	0.063	0.009	0.014	0.000000	0.000000	398.90	1549.52
3	GUIDE	761400304	7.99	9160	-0.100	0.142	0.048	0.079	334.105164	-14.045021	492.31	1195.30
4	GUIDE	761400704	8.03	9159	-0.001	0.077	0.060	0.096	334.287647	-14.192394	1218.49	1595.52
5	GUIDE	761400992	7.62	9160	0.057	-0.048	0.056	0.090	334.002882	-14.435961	1673.90	351.12
6	GUIDE	761401872	9.12	9157	-0.088	-0.117	0.087	0.145	333.203729	-13.899520	-1135.60	-1551.25
7	GUIDE	761405288	9.59	9150	0.134	-0.057	0.091	0.150	334.101900	-14.554599	2197.10	517.05

2.4 Star Slots

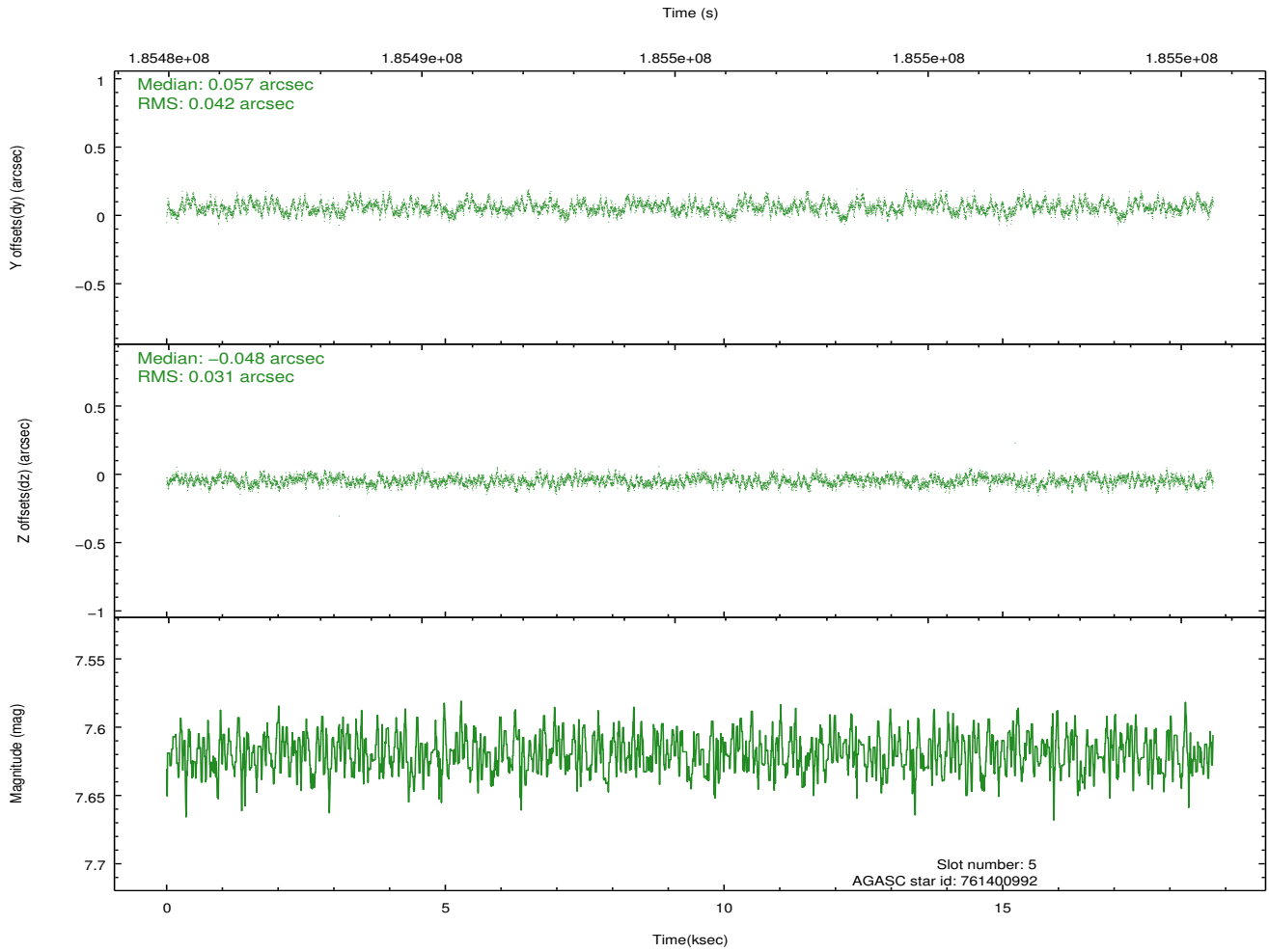
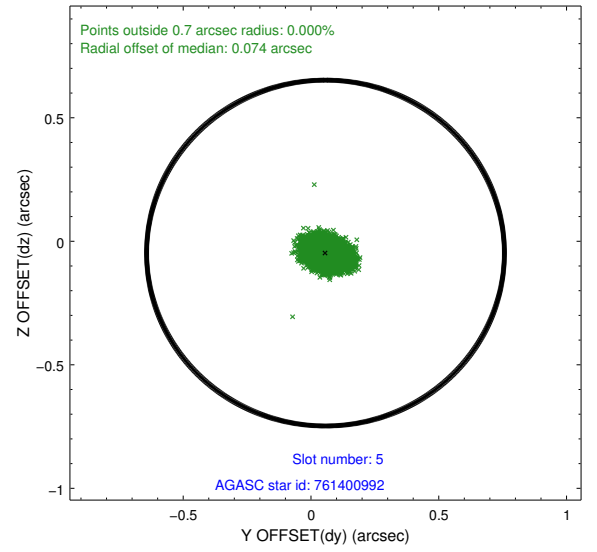
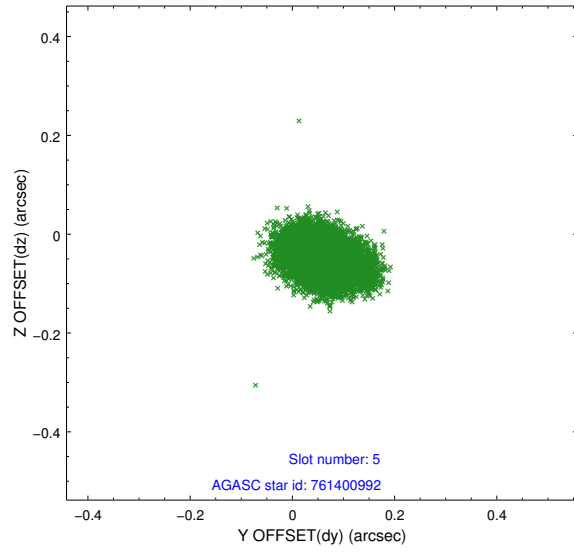
2.4.1 Slot 3



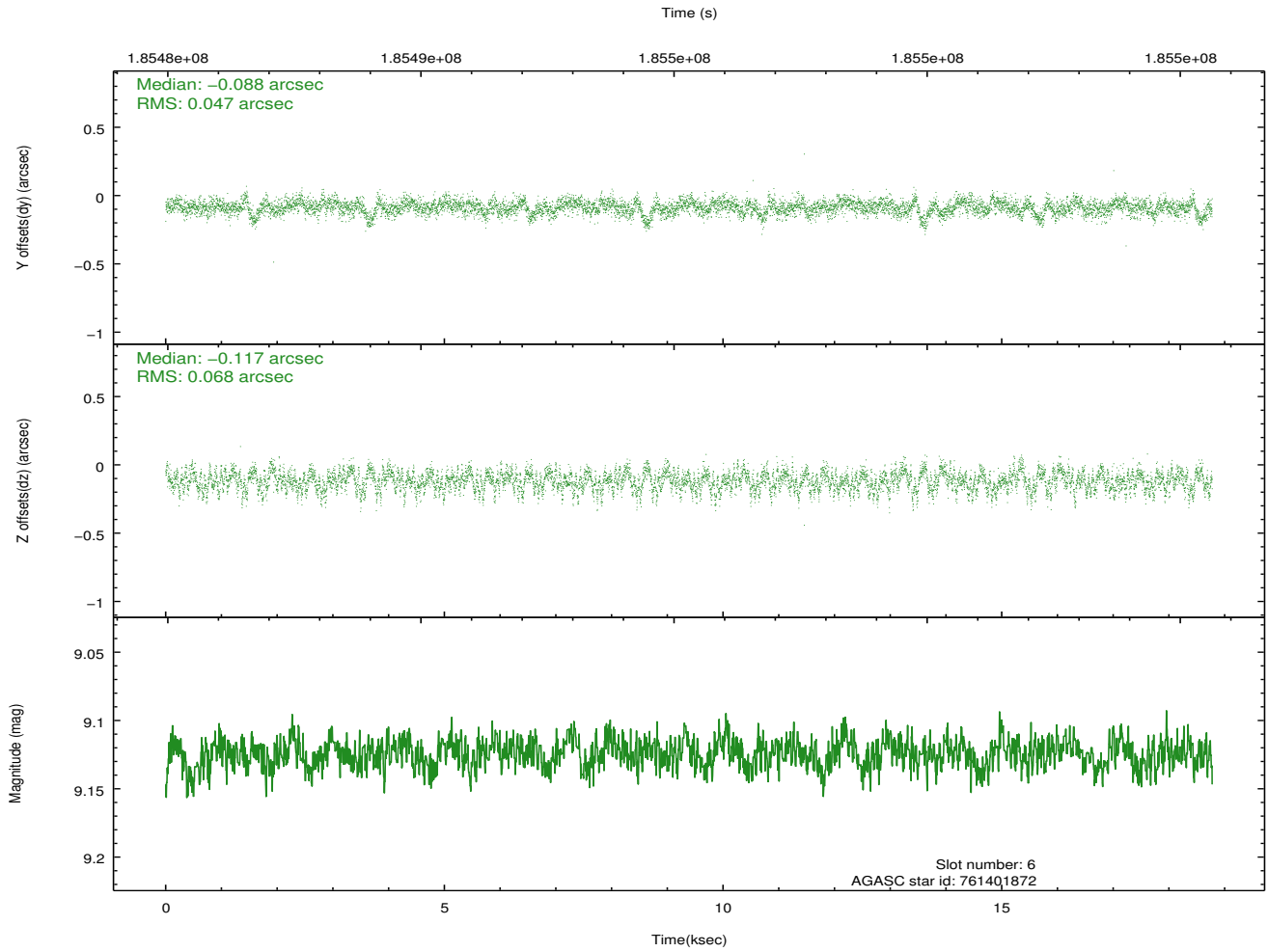
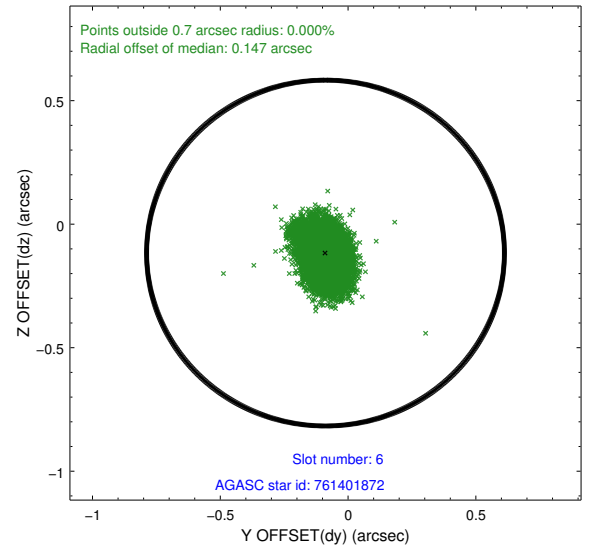
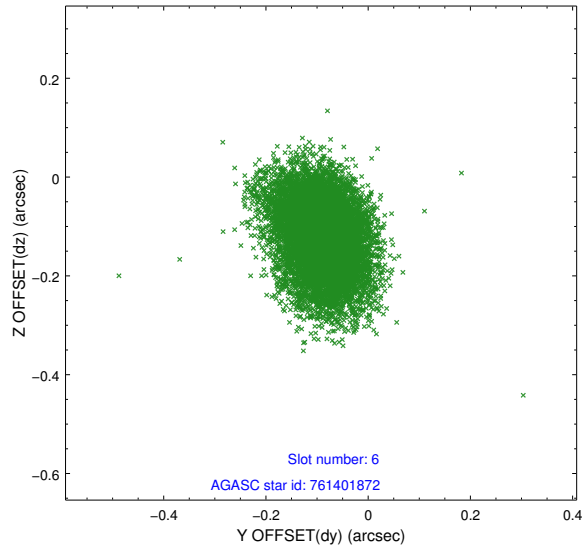
2.4.2 Slot 4



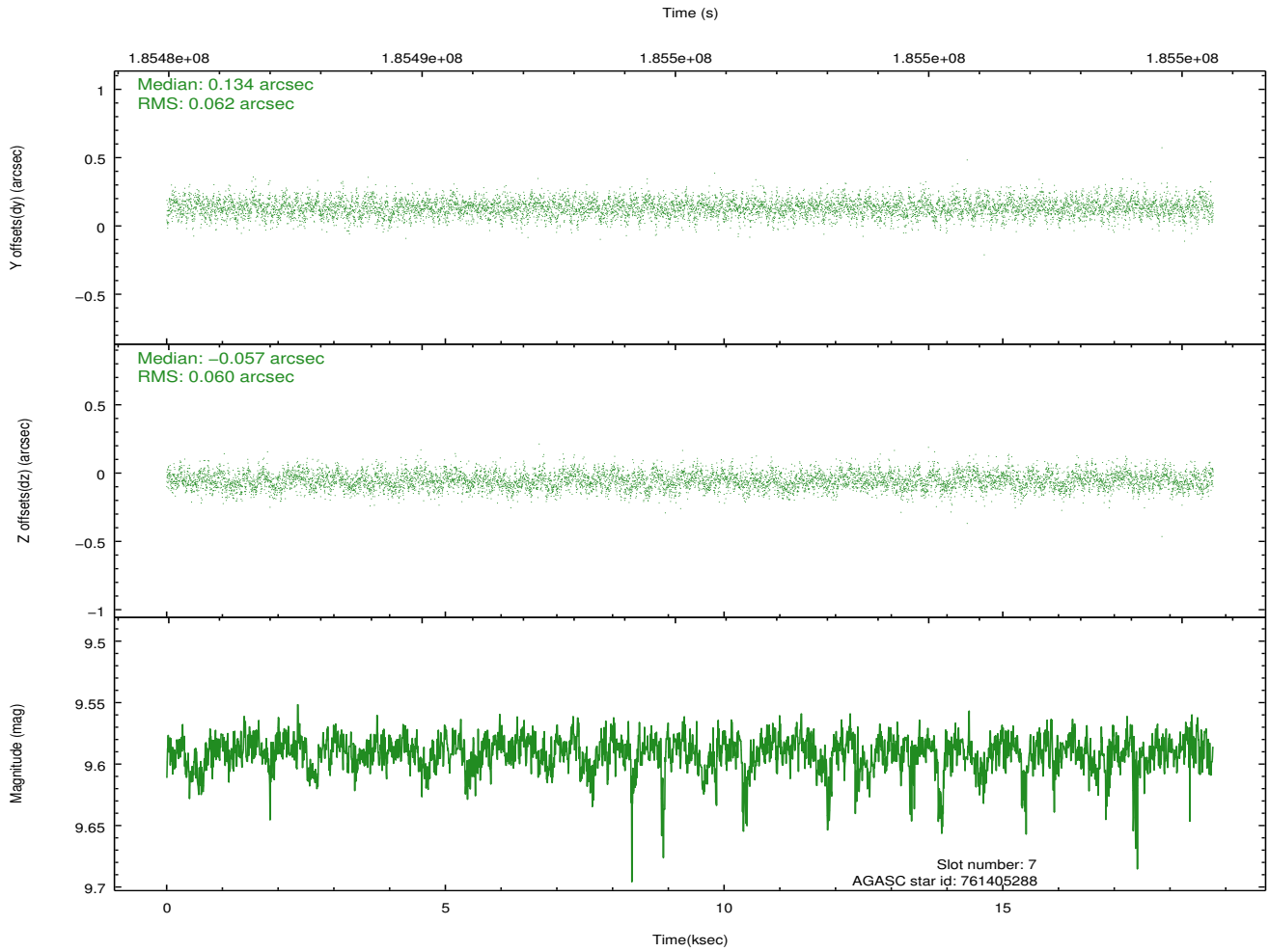
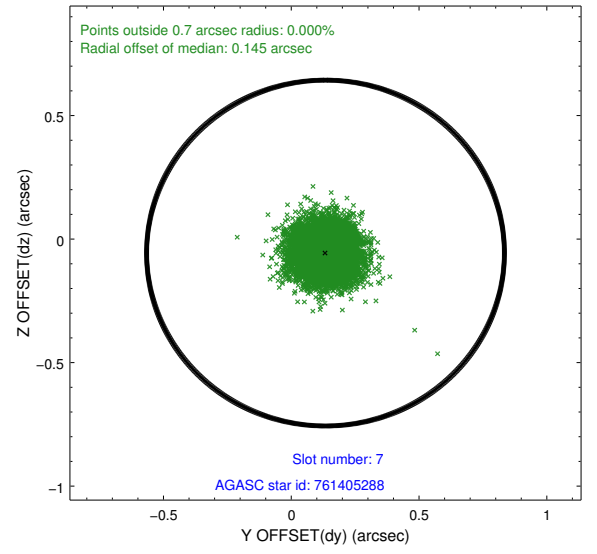
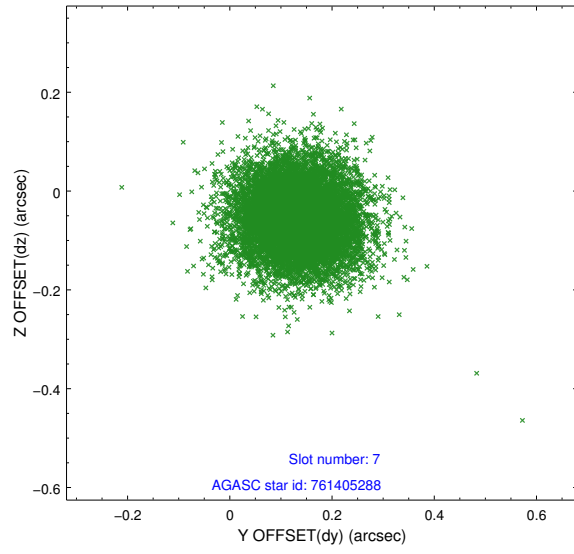
2.4.3 Slot 5



2.4.4 Slot 6

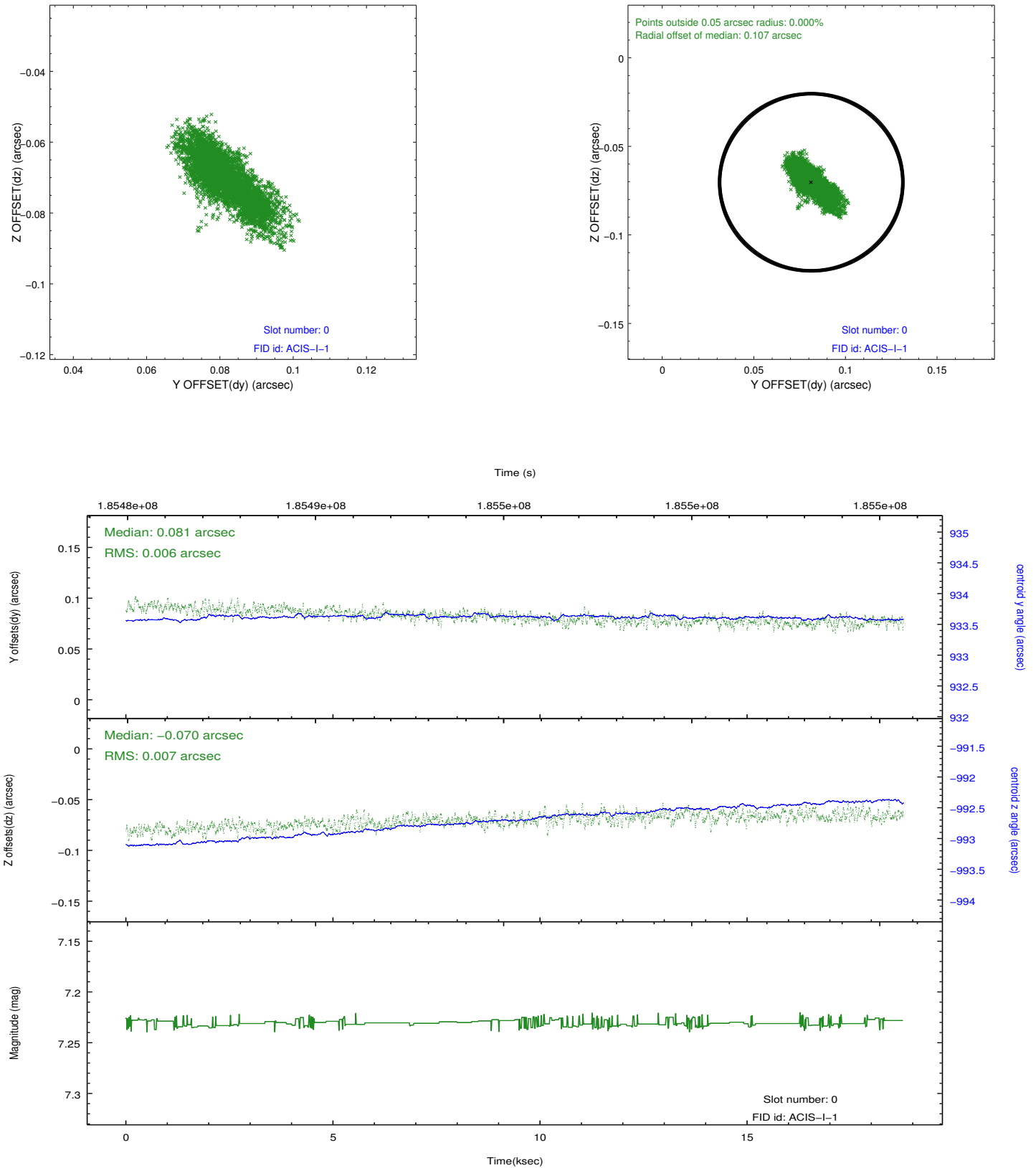


2.4.5 Slot 7

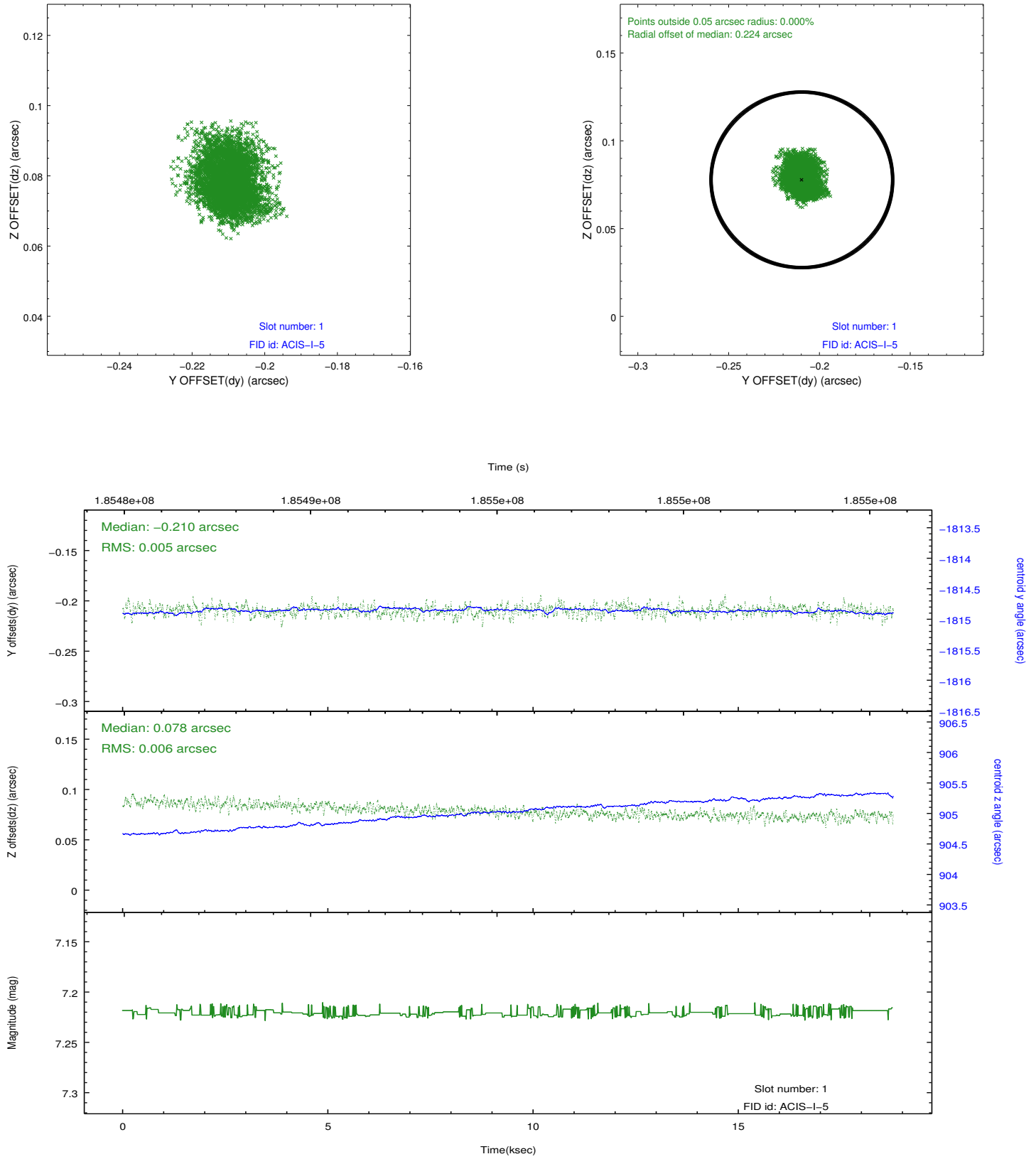


2.5 FID Slots

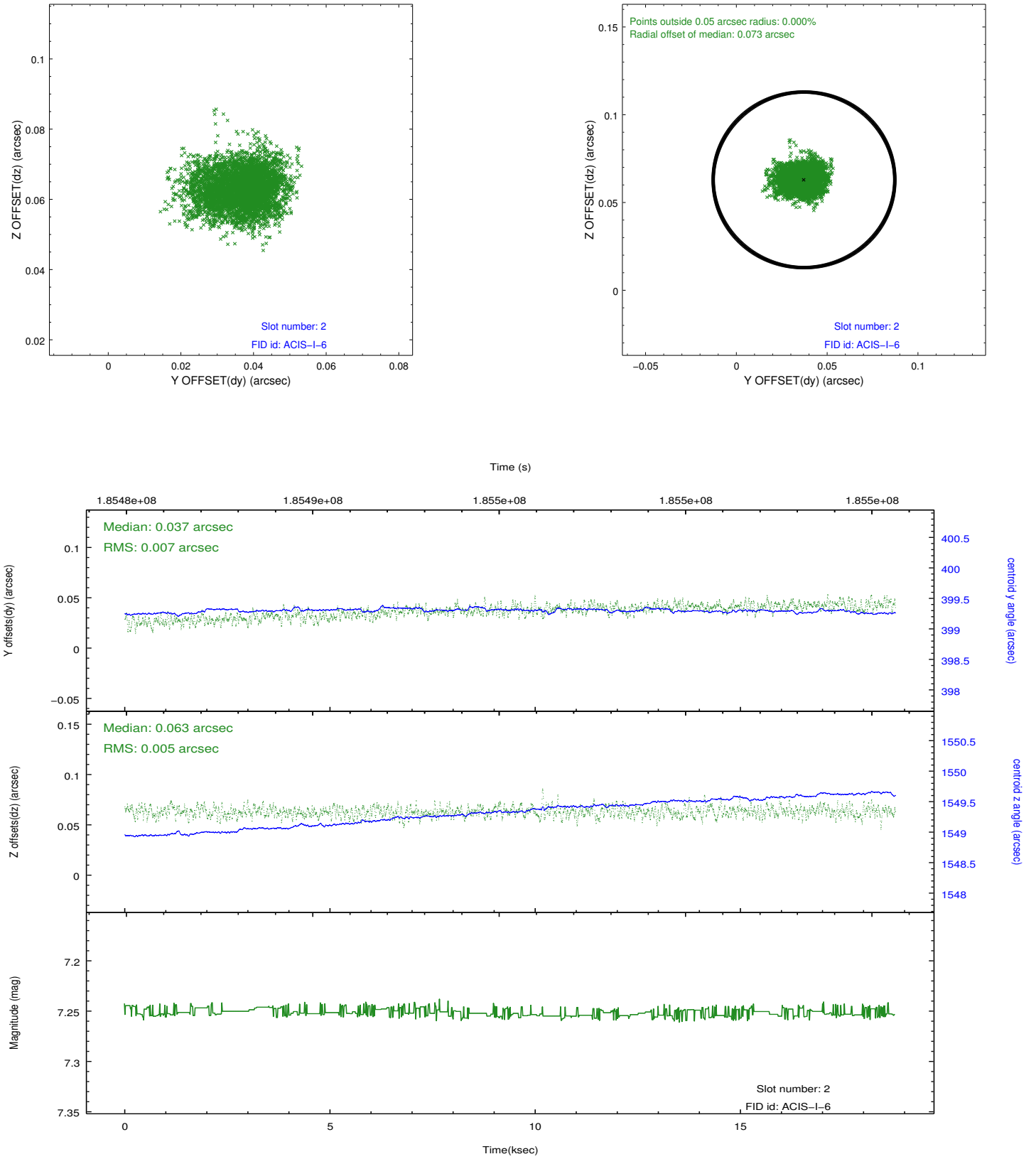
2.5.1 Slot 0



2.5.2 Slot 1



2.5.3 Slot 2



A Summary

A.1 Status

V&V Scientist	Jen Lauer
V&V Date (YYYY-MM-DD)	2012.12.02
V&V Edition	1
V&V Disposition and Status	OK
V&V Charge Time	18.77

A.2 Comments