

# V&V Reference Report

## L2 ASCDS Version : 7.6.8

Observation 4971 - L2 Version 001  
Chandra X-Ray Center

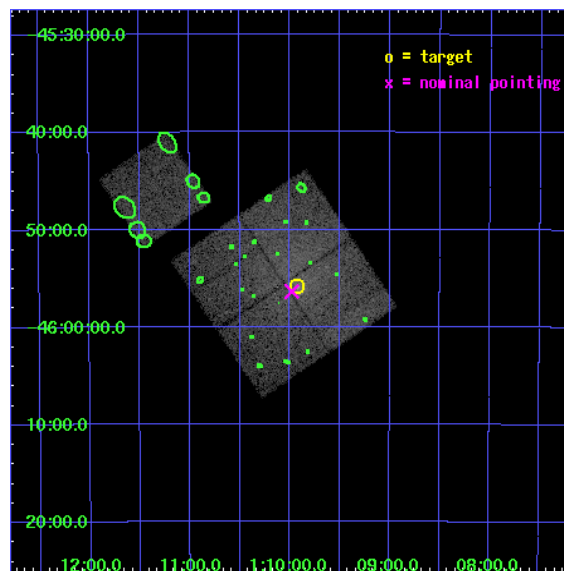
L2 Processing Date : Jun 27 2006

## Contents

<b>1</b>	<b>Front</b>	<b>2</b>
<b>2</b>	<b>OBI</b>	<b>3</b>
2.1	OBI . . . . .	3
2.1.1	Images . . . . .	3
2.1.2	Bias . . . . .	3
2.1.3	Parameters . . . . .	4
2.1.4	Events . . . . .	4
2.2	Compared Parameters . . . . .	5
2.3	Aspect . . . . .	6
2.4	Star Slots . . . . .	9
2.4.1	Slot 3 . . . . .	9
2.4.2	Slot 4 . . . . .	10
2.4.3	Slot 5 . . . . .	11
2.4.4	Slot 6 . . . . .	12
2.4.5	Slot 7 . . . . .	13
2.5	FID Slots . . . . .	14
2.5.1	Slot 0 . . . . .	14
2.5.2	Slot 1 . . . . .	15
2.5.3	Slot 2 . . . . .	16
<b>3</b>	<b>Point Sources</b>	<b>17</b>
<b>A</b>	<b>Summary</b>	<b>18</b>
A.1	Status . . . . .	18
A.2	Comments . . . . .	18

# 1 Front

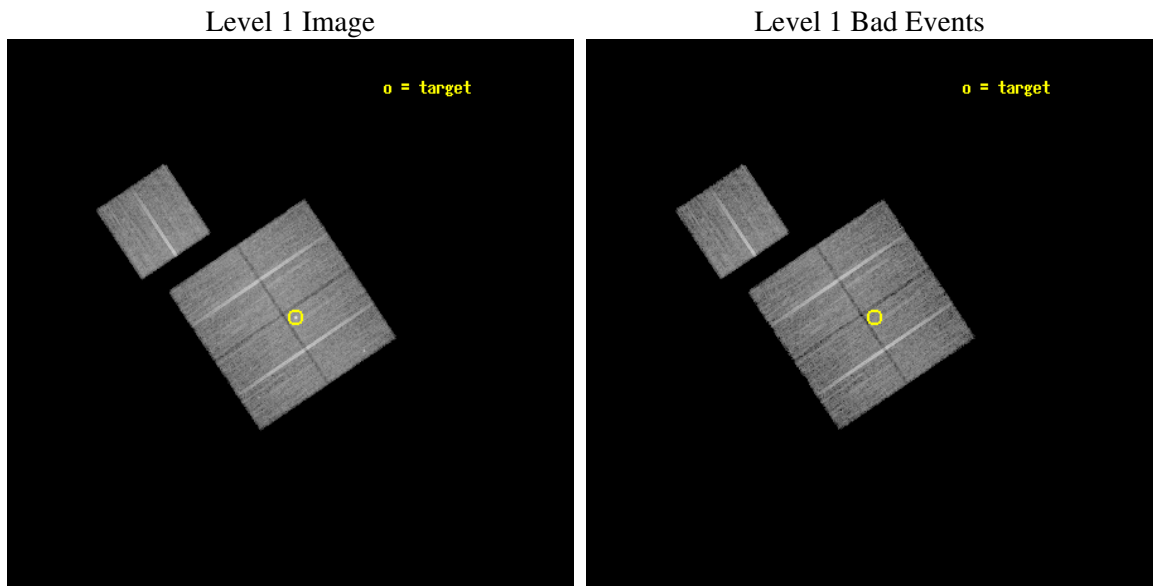
seq_num	800416
obs_id	4971
title	Testing Formation Models and Heating and Feedback Mechanisms In Galaxy Groups
observer	Dr. William Forman
object	IC1633
dtcycle	0
cycle	P
ra_targ	17.48125
dec_targ	-45.930833
ra_nom	17.494774093704
dec_nom	-45.939370421316
roll_nom	326.12925858765
revision	2
ontime	25119.258951545
livetime	24791.057340813
ontime0	25119.258981466
ontime1	25119.258951545
ontime2	25122.399951696
ontime3	25116.117981315
ontime6	25122.399951696
l2events	81158



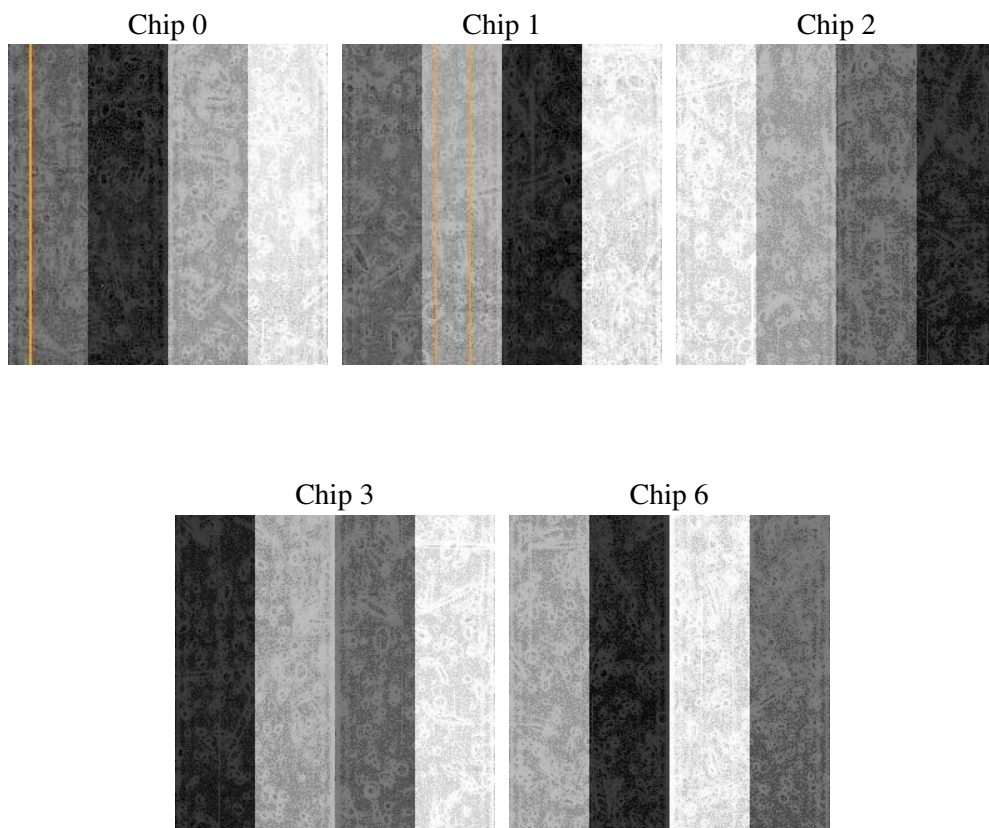
## 2 OBI

### 2.1 OBI

#### 2.1.1 Images



#### 2.1.2 Bias



### 2.1.3 Parameters

obi_num	0
ascdsver	7.6.8
caldbver	3.2.2
date	2006-06-28T02:04:30
revision	2

sched_exp_time	25000.000000
ontime	25124.912369251
ontime0	25124.912399173
ontime1	25124.912369251
ontime2	25128.053369403
ontime3	25121.771399021
ontime6	25128.053369403
l1events	556385

### 2.1.4 Events

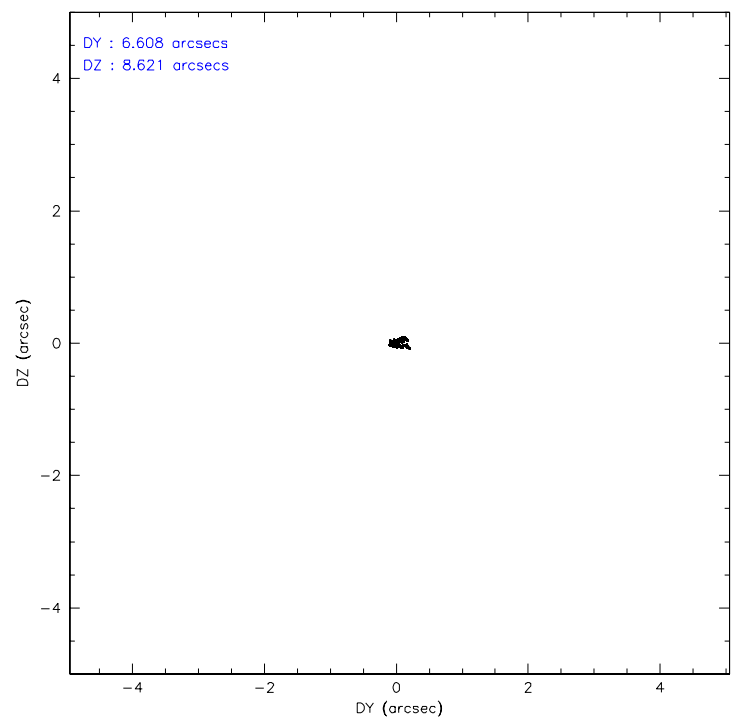
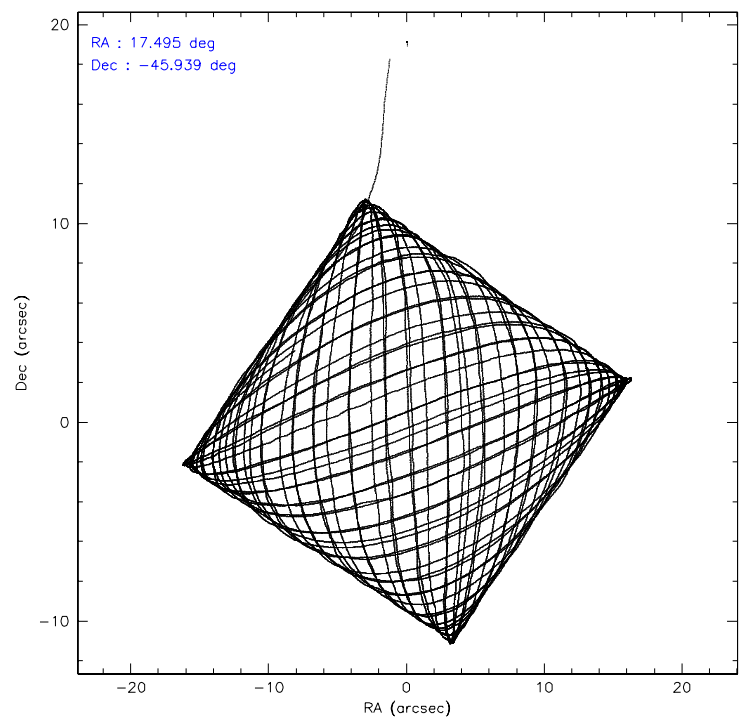
	ccd 0	ccd 1	ccd 2	ccd 3	ccd 6
level 1 events	103168	113343	116630	114437	108807
rejected events	86995	88414	99075	94044	95158
rejected %	84%	78%	84%	82%	87%

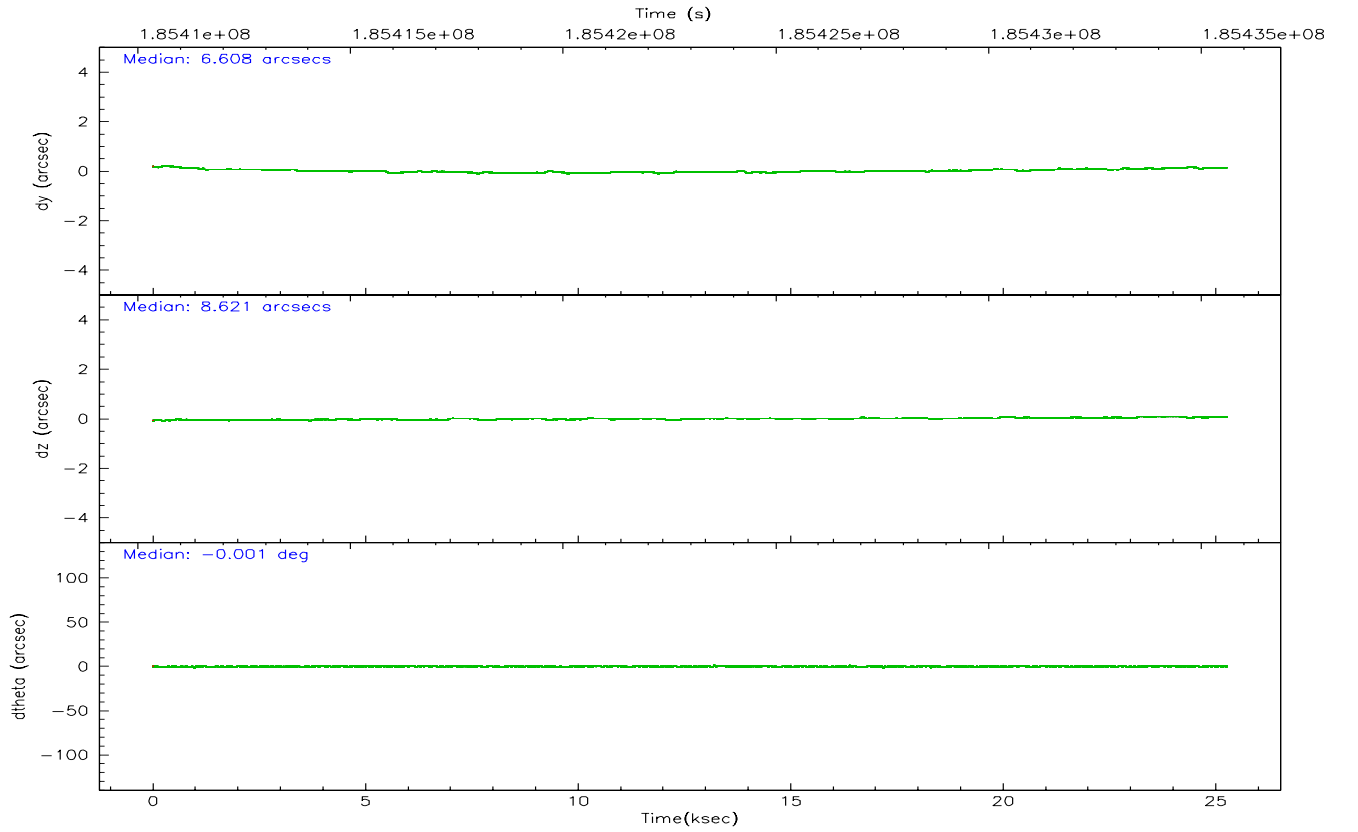
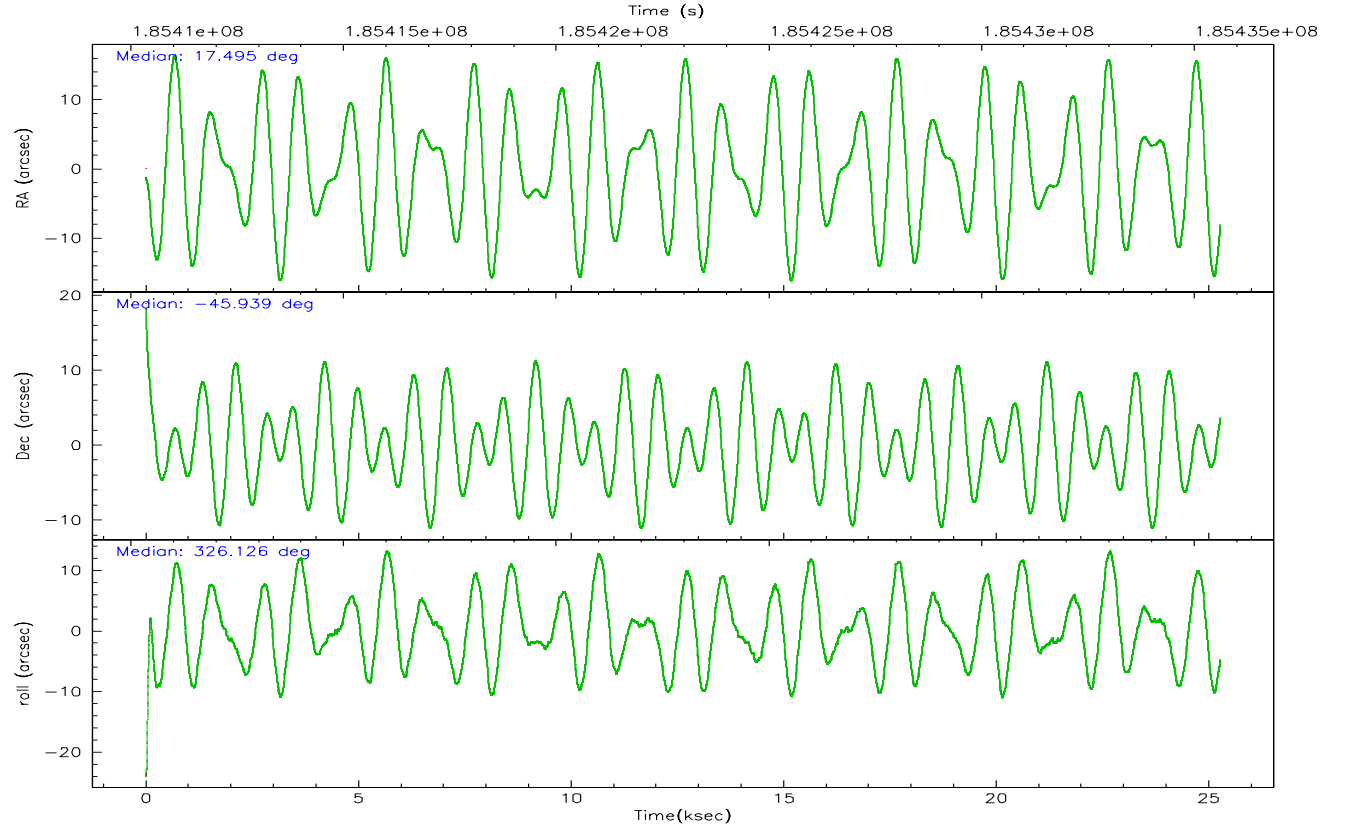
	ccd 0	ccd 1	ccd 2	ccd 3	ccd 6
grade 0 events	8153	14774	9486	11965	5969
	7%	13%	8%	10%	5%
grade 1 events	59	88	83	92	45
	0%	0%	0%	0%	0%
grade 2 events	3004	4002	3124	3169	2585
	2%	3%	2%	2%	2%
grade 3 events	1429	1697	1375	1486	1309
	1%	1%	1%	1%	1%
grade 4 events	1289	1671	1453	1502	1290
	1%	1%	1%	1%	1%
grade 5 events	3978	4189	3754	4459	4391
	3%	3%	3%	3%	4%
grade 6 events	2306	2790	2118	2275	2496
	2%	2%	1%	1%	2%
grade 7 events	82950	84132	95237	89489	90722
	80%	74%	81%	78%	83%

## 2.2 Compared Parameters

Parameter	Planned	Actual	Parameter	Planned	Actual
Instrument	ACIS	ACIS	Obspar format version number	6	6
Detector	ACIS-01236	ACIS-01236	Obspar file type	PREDICTED	ACTUAL
Grating	NONE	NONE	Obspar update status	NONE	UPDATED
Data mode	VFAINT	VFAINT	On-chip summing requested	N	N
Observation mode	POINTING	POINTING	Subarray requested	NONE	NONE
Pointing RA	17.455530	17.4947740937045	Alternating exposures requested	N	N
Pointing Dec	-45.937644	-45.93937042131617	Primary exposure time	0.000000	3.1
Pointing Roll	325.892385	326.1292585876542			
SIM focus pos (mm)	-0.782348	-0.7809083437167272			
SIM defocus (mm)	0	0.001439871863259334			
SIM translation stage pos (mm)	-238.592463	-238.5959505415362			
SIM translation stage offset (mm)	5	5.003497538606524			
Observation start time	185410622.184000	185409619.654			
Observation start date	2003-11-16T22:55:58	2003-11-16T22:40:19			
Observation end time	185435622.184000	185436131.79265			
Observation end date	2003-11-17T05:52:38	2003-11-17T06:02:11			
Read mode	TIMED	TIMED			

2.3 Aspect





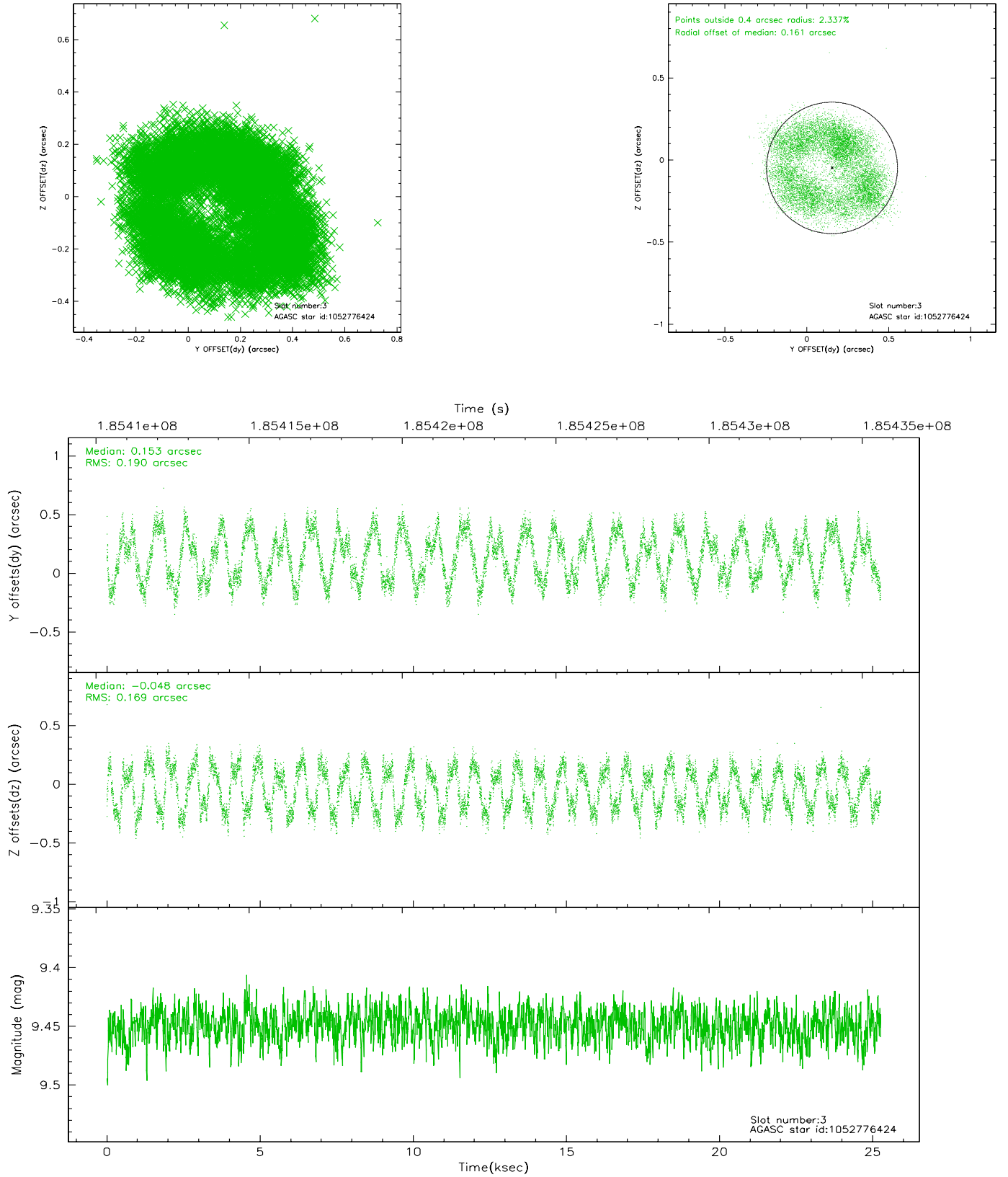
### Slot Statistics

slot	status	id	mag	n_pts	med_dy	med_dz	dr1	dr2	ra	dec	mean_y	mean_z
0	FID	ACIS-I-1	7.26	6163	-0.049	0.068	0.007	0.012	0.000000	0.000000	933.11	-729.11
1	FID	ACIS-I-5	7.24	6163	-0.092	-0.004	0.006	0.010	0.000000	0.000000	-1814.96	1168.29
2	FID	ACIS-I-6	7.25	6163	0.050	0.006	0.007	0.011	0.000000	0.000000	398.65	1812.91
3	GUIDE	1052776424	9.45	12324	0.153	-0.048	0.280	0.374	17.993210	-46.428047	2097.56	-717.40
4	GUIDE	1052776472	9.11	12324	-0.069	0.018	0.098	0.151	18.193201	-45.649976	961.32	1891.39
5	GUIDE	1052776568	9.12	12321	0.195	0.093	0.132	0.197	18.680703	-45.803836	2289.27	2104.02
6	GUIDE	1052777408	8.29	12326	-0.145	-0.147	0.092	0.136	16.648061	-45.918404	-1707.28	-1085.26
7	GUIDE	1052778536	9.67	12318	-0.121	0.071	0.126	0.213	16.974711	-45.313822	-2265.27	1173.91

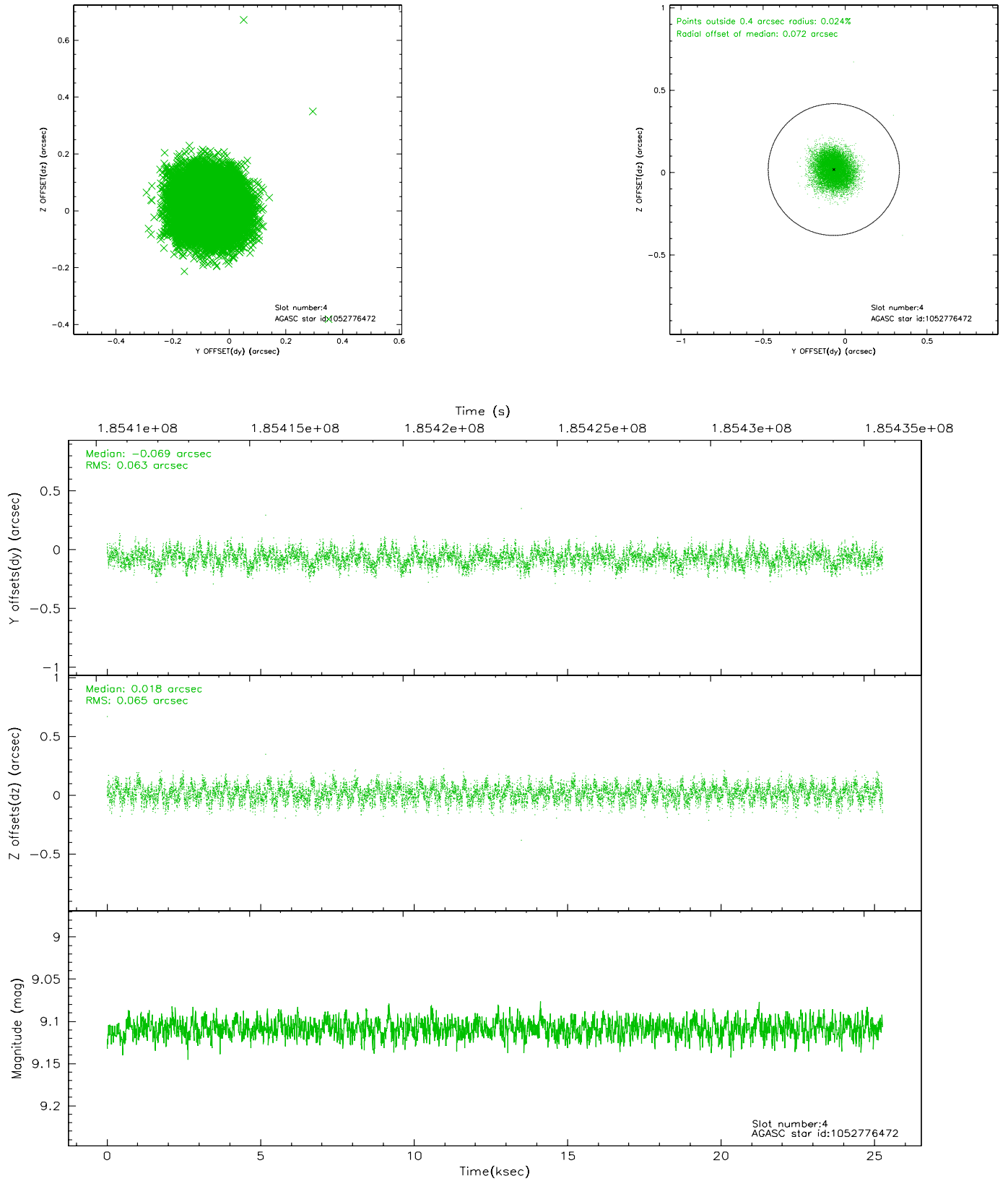


## 2.4 Star Slots

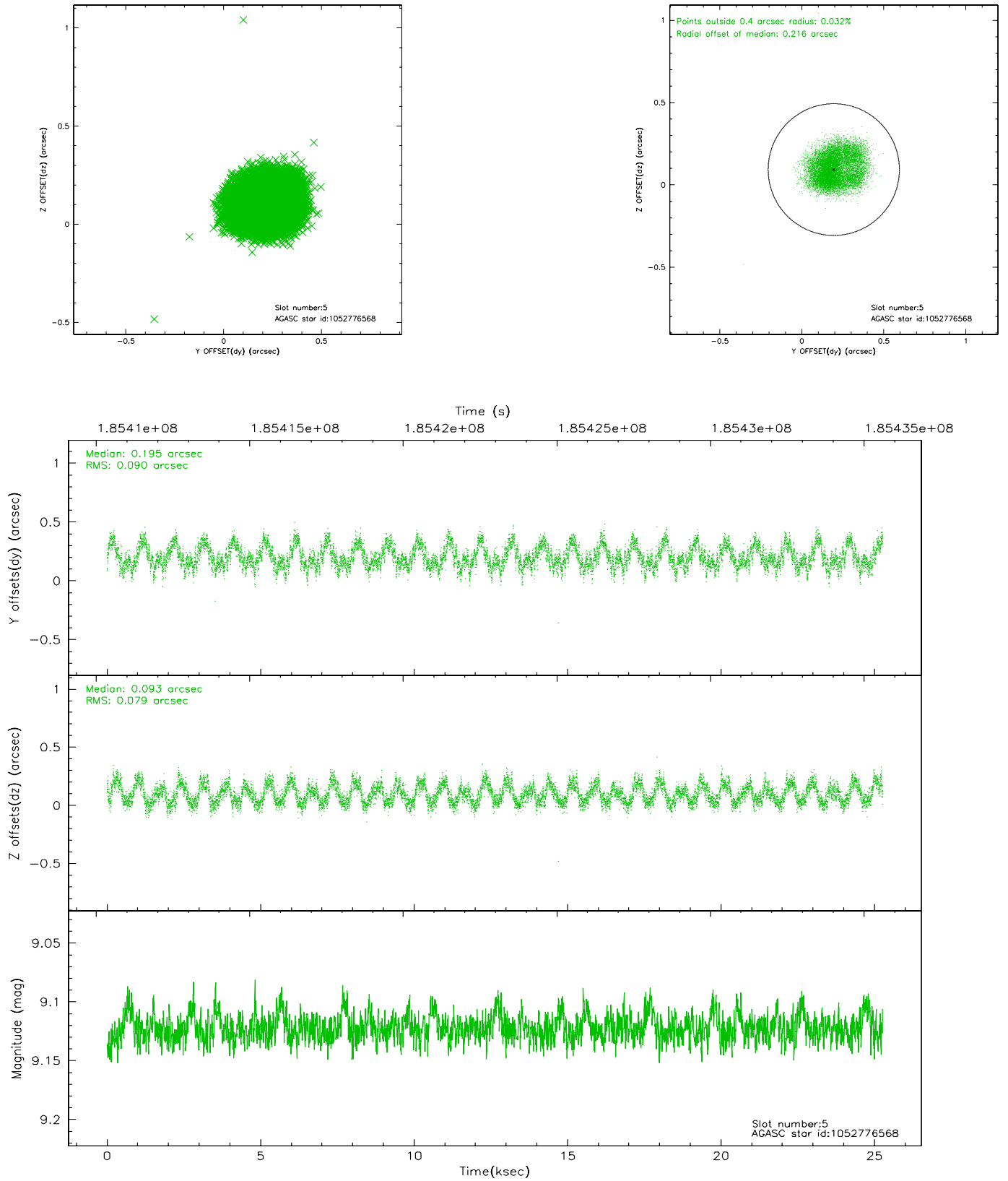
### 2.4.1 Slot 3



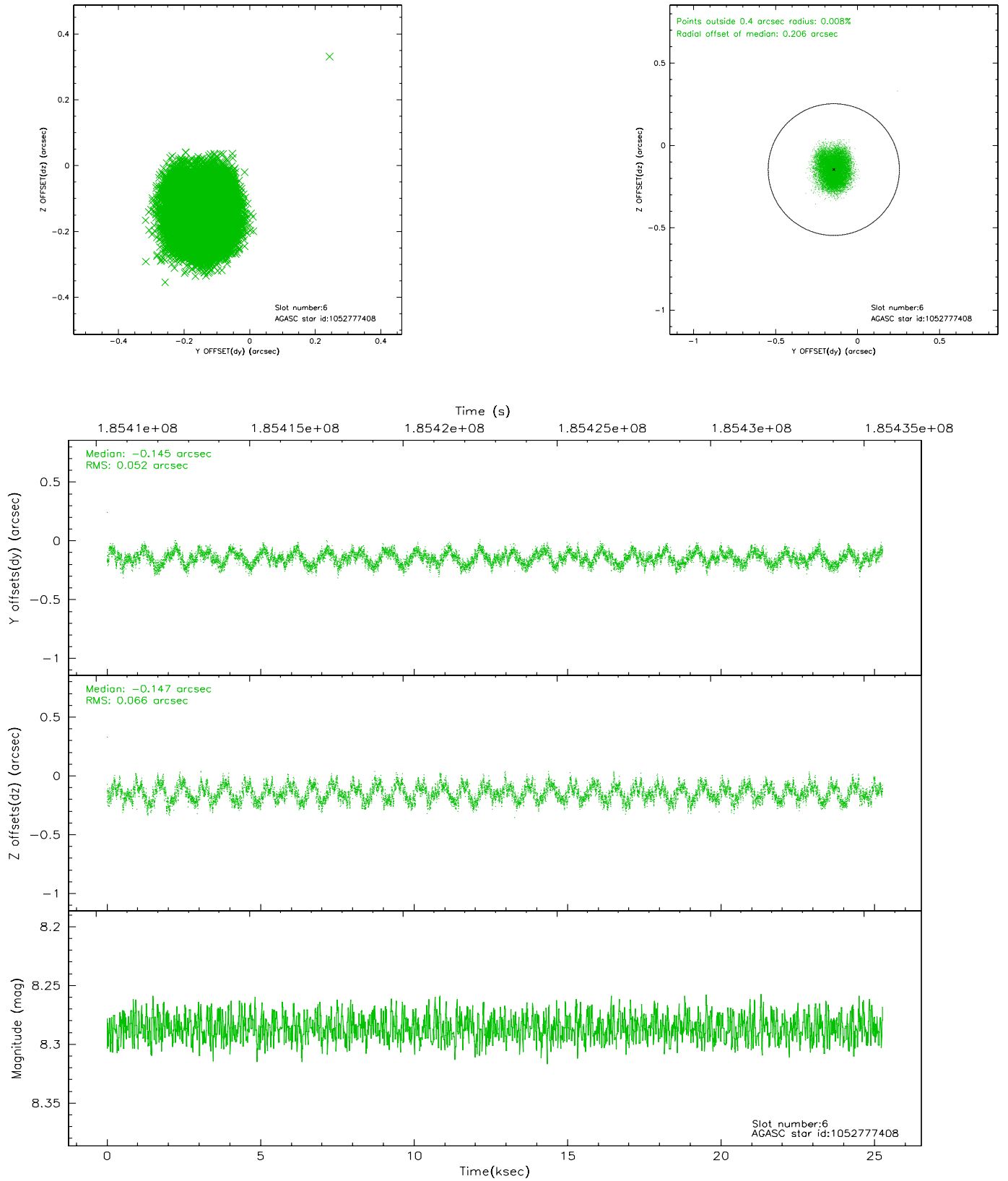
## 2.4.2 Slot 4



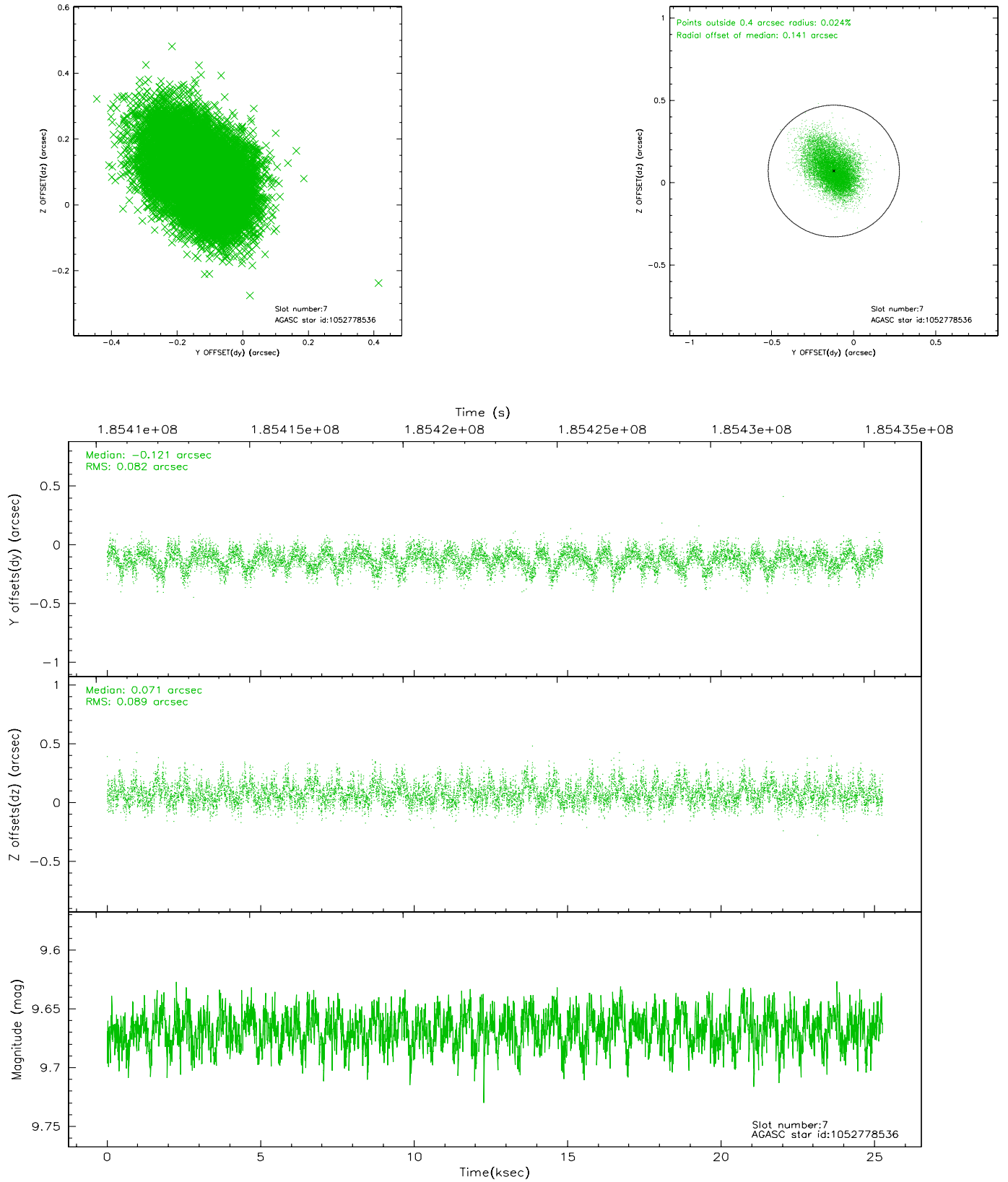
### 2.4.3 Slot 5



## 2.4.4 Slot 6

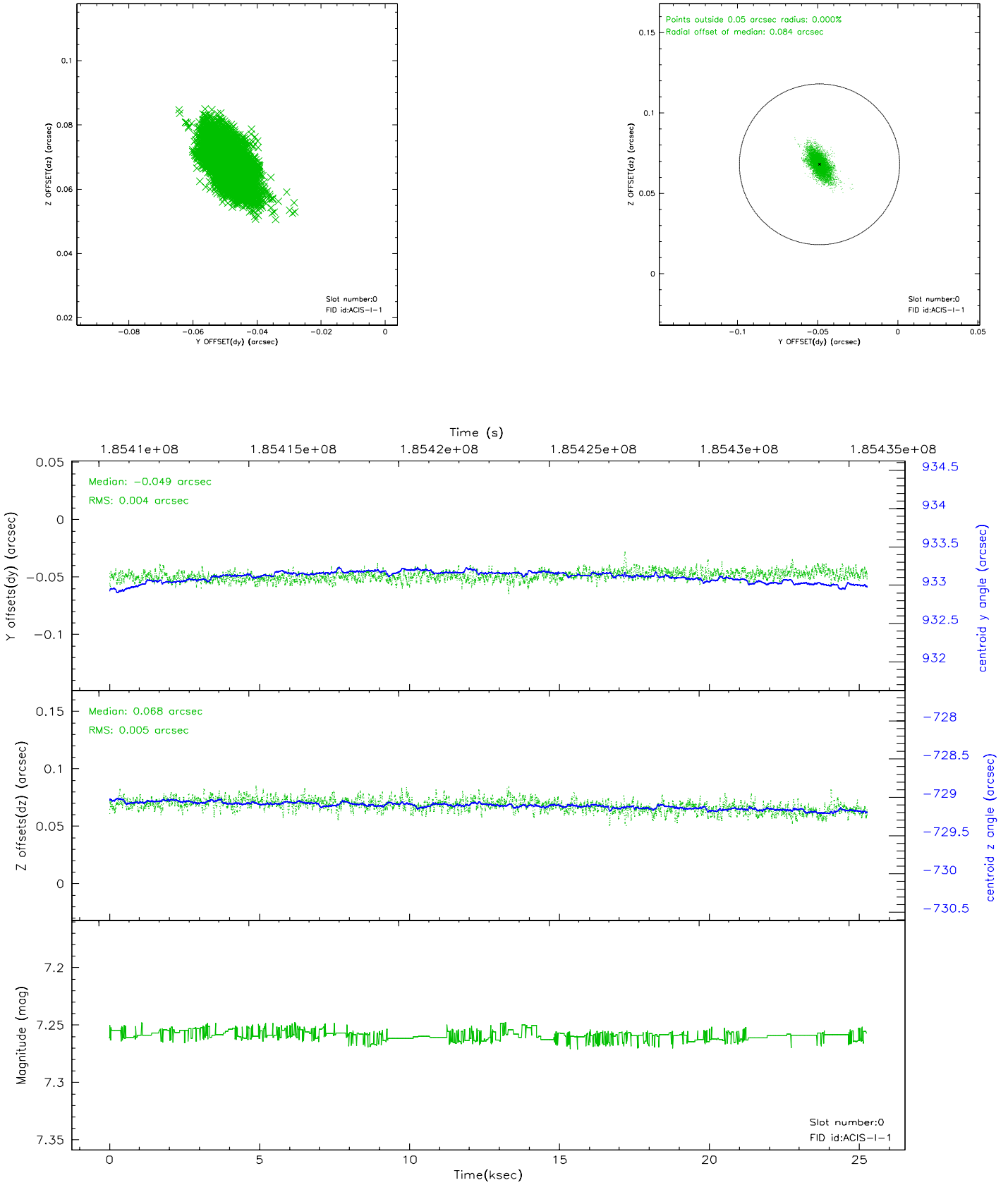


## 2.4.5 Slot 7

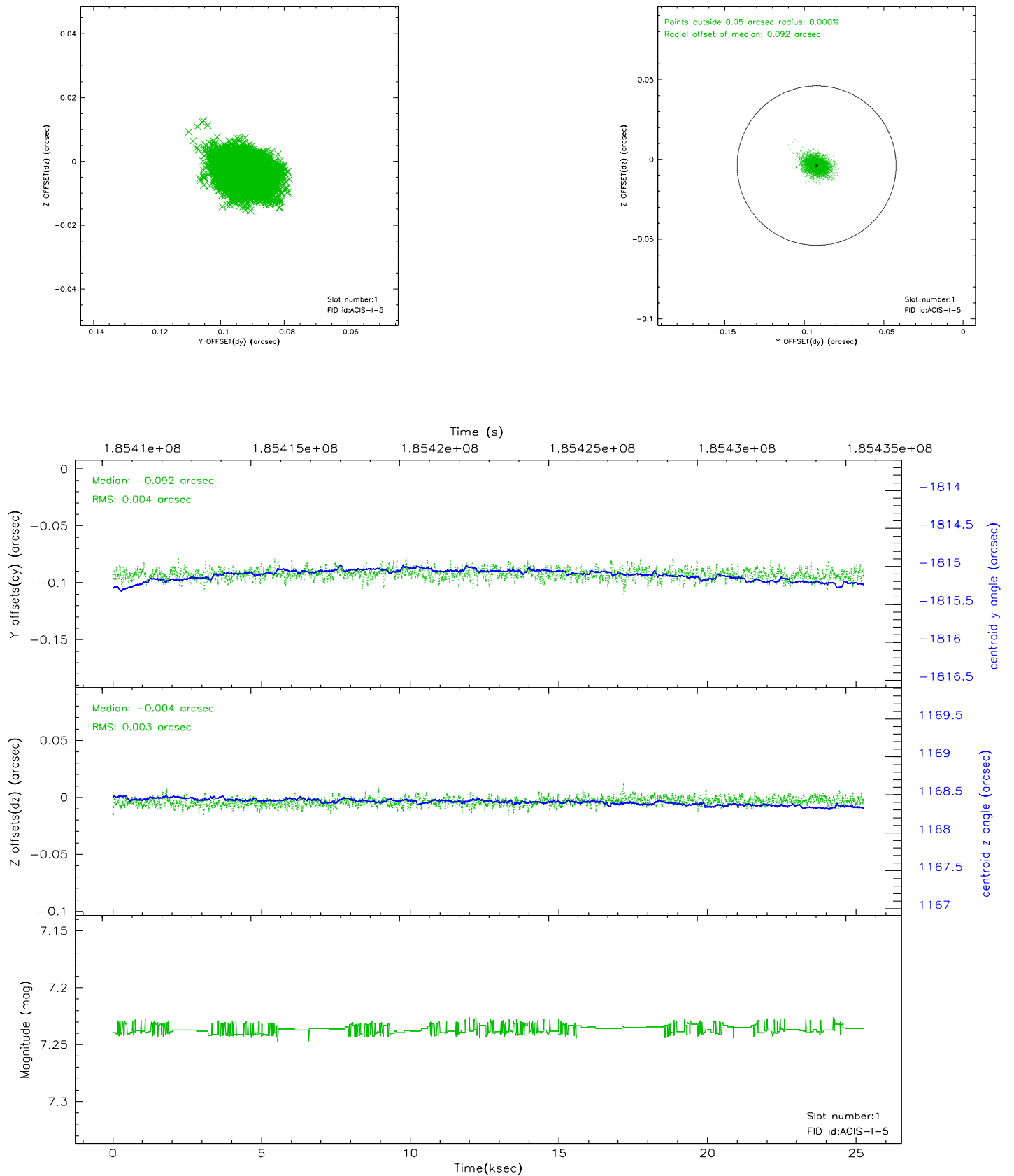


## 2.5 FID Slots

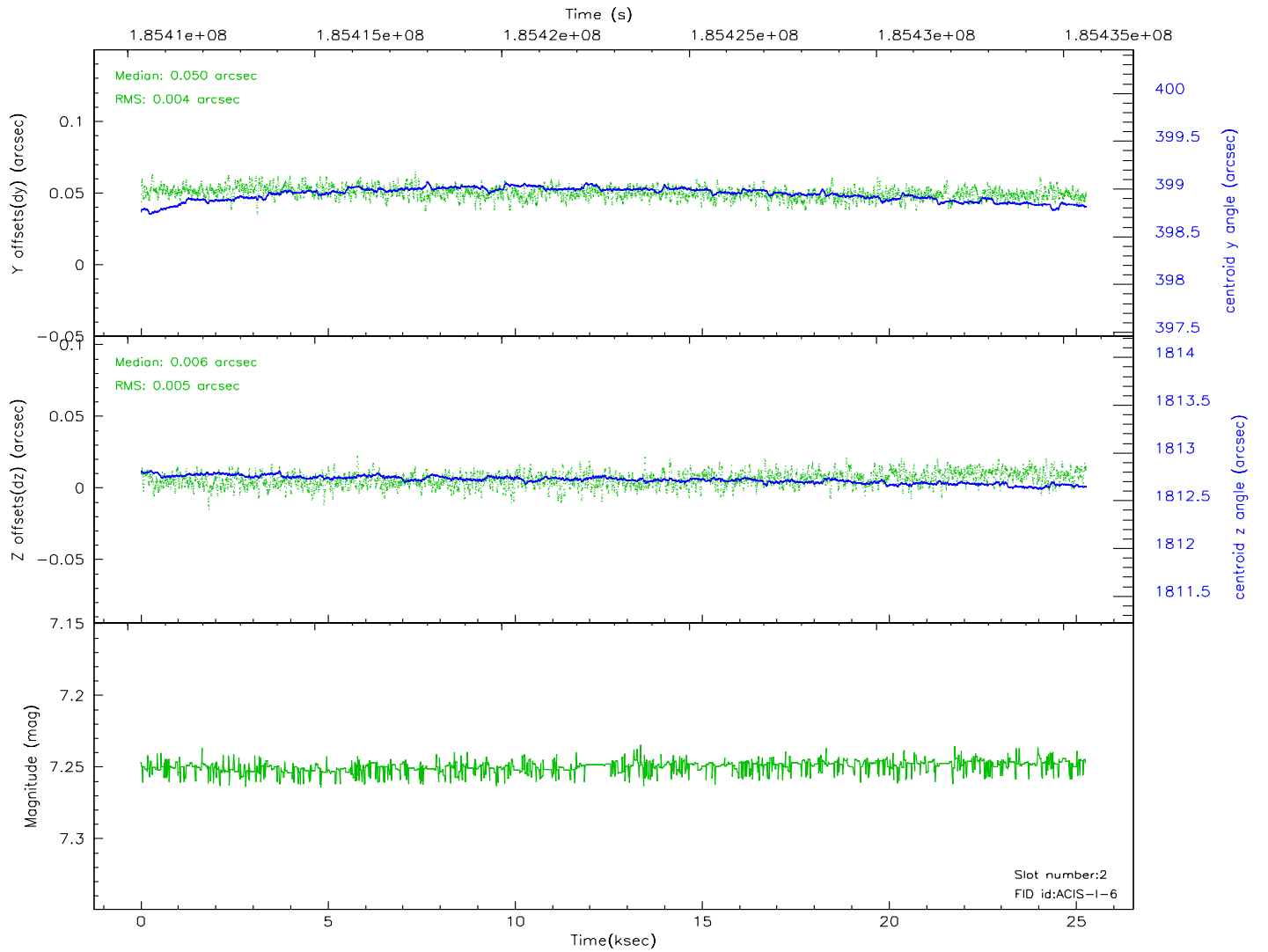
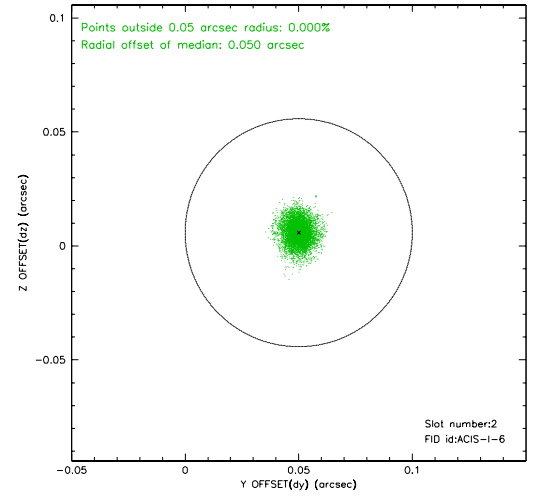
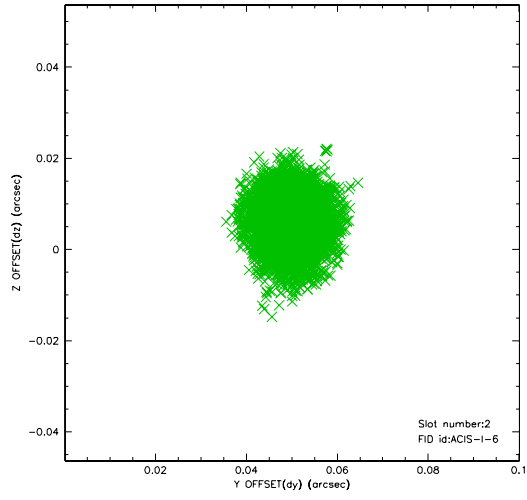
### 2.5.1 Slot 0



## 2.5.2 Slot 1

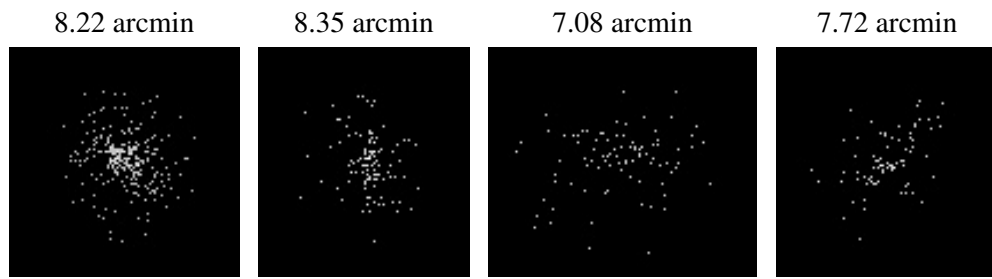


### 2.5.3 Slot 2





### 3 Point Sources



## A Summary

### A.1 Status

V&V Scientist	Beth Sundheim
V&V Date (YYYY-MM-DD)	2006.06.28
V&V Edition	1
V&V Disposition and Status	OK
V&V Charge Time	25.122

### A.2 Comments