

# V&V Reference Report

## L2 ASCDS Version : 7.6.7.2

Observation 4931 - L2 Version 001  
Chandra X-Ray Center

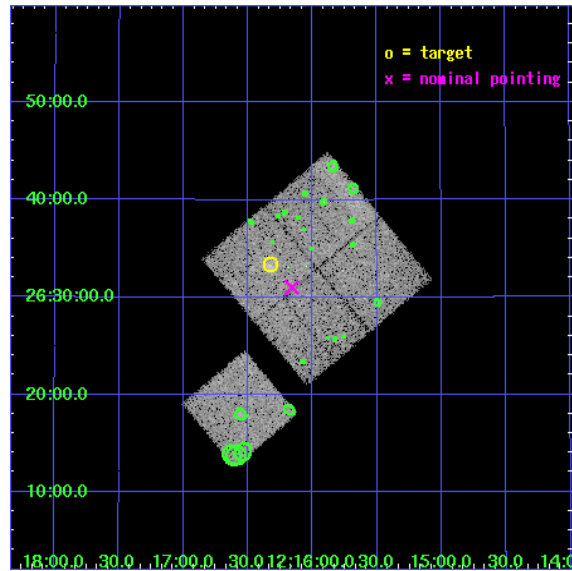
L2 Processing Date : May 18 2006

## Contents

<b>1</b>	<b>Front</b>	<b>2</b>
<b>2</b>	<b>OBI</b>	<b>3</b>
2.1	OBI . . . . .	3
2.1.1	Images . . . . .	3
2.1.2	Bias . . . . .	3
2.1.3	Parameters . . . . .	4
2.1.4	Events . . . . .	4
2.2	Compared Parameters . . . . .	5
2.3	Aspect . . . . .	6
2.4	Star Slots . . . . .	9
2.4.1	Slot 3 . . . . .	9
2.4.2	Slot 4 . . . . .	10
2.4.3	Slot 5 . . . . .	11
2.4.4	Slot 6 . . . . .	12
2.4.5	Slot 7 . . . . .	13
2.5	FID Slots . . . . .	14
2.5.1	Slot 0 . . . . .	14
2.5.2	Slot 1 . . . . .	15
2.5.3	Slot 2 . . . . .	16
<b>3</b>	<b>Point Sources</b>	<b>17</b>
<b>A</b>	<b>Summary</b>	<b>18</b>
A.1	Status . . . . .	18
A.2	Comments . . . . .	18

# 1 Front

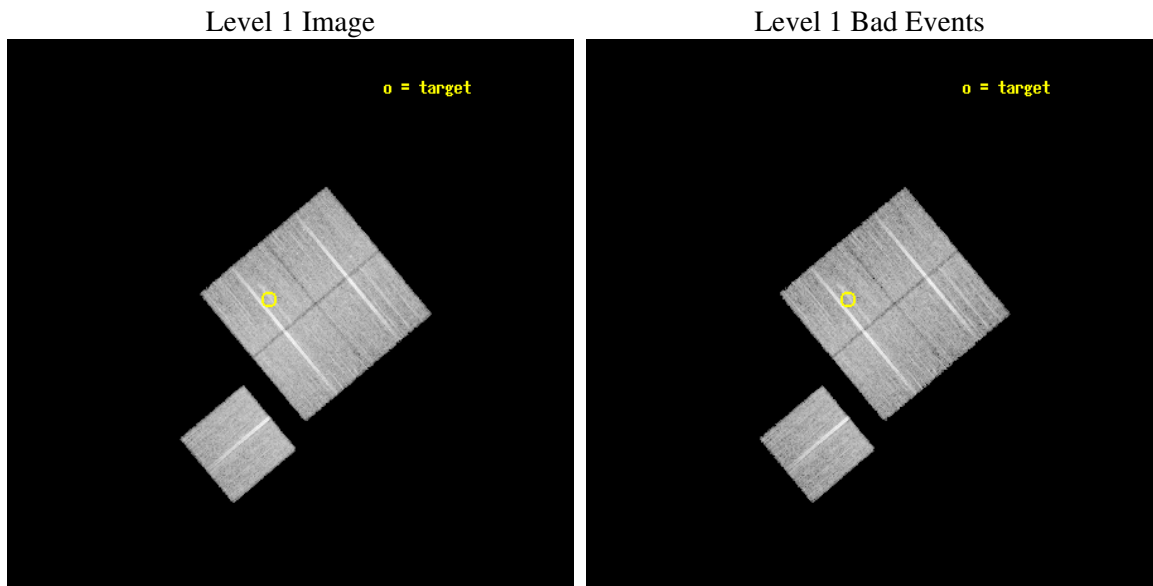
seq_num	800382
obs_id	4931
title	Chandra snapshot survey of 10 distant clusters of galaxies
observer	Dr. Stephen Murray
object	CL1216+2633
dtcycle	0
cycle	P
ra_targ	184.080833
dec_targ	26.557222
ra_nom	184.04017070643
dec_nom	26.516896392576
roll_nom	230.04481106421
revision	2
ontime	18739.499963969
livetime	18494.654601121
ontime0	18733.217983633
ontime1	18739.499963969
ontime2	18739.499963969
ontime3	18739.499963969
ontime6	18739.499963969
l2events	63467



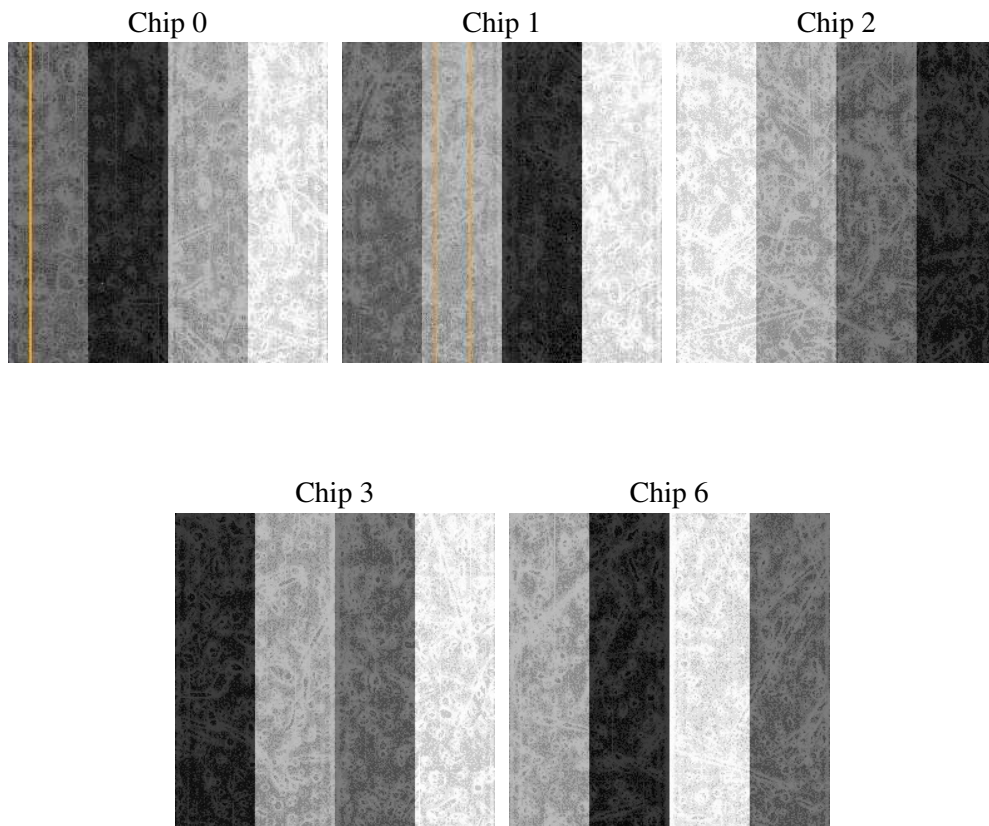
## 2 OBI

### 2.1 OBI

#### 2.1.1 Images



#### 2.1.2 Bias



### 2.1.3 Parameters

obi_num	0
ascdsver	7.6.7.2
caldbver	3.2.2
date	2006-05-18T20:10:29
revision	2

sched_exp_time	18600.000000
ontime	18745.510867834
ontime0	18742.369907618
ontime1	18748.651887953
ontime2	18745.510897785
ontime3	18745.510867834
ontime6	18748.651887953
l1events	570302

### 2.1.4 Events

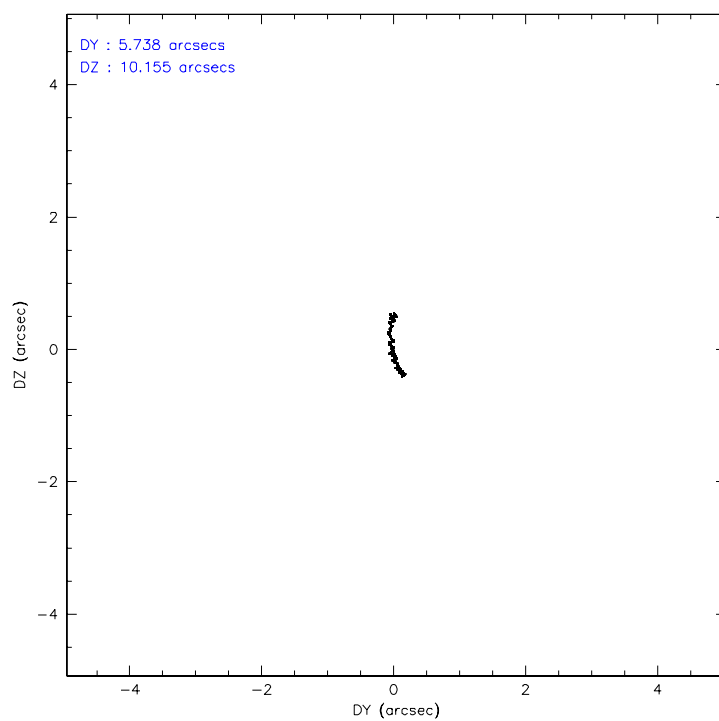
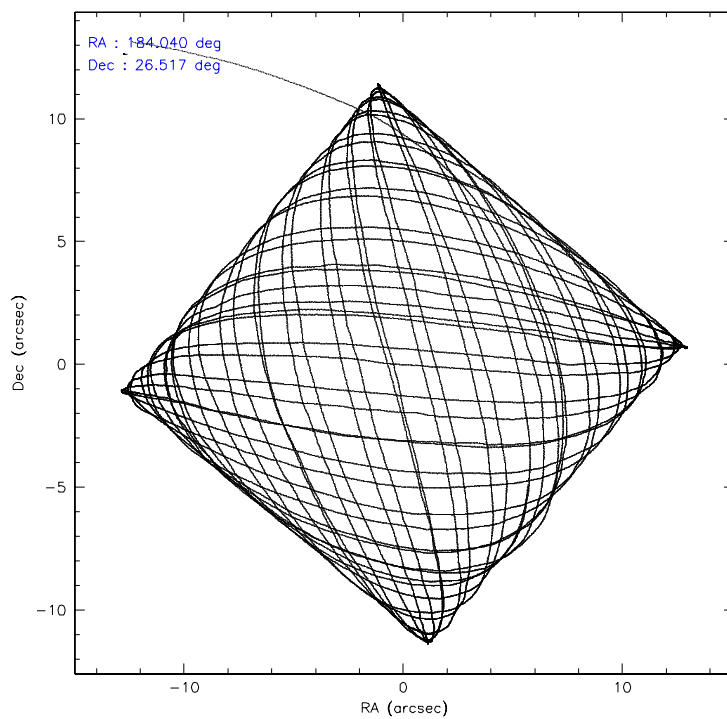
	ccd 0	ccd 1	ccd 2	ccd 3	ccd 6
level 1 events	109913	107168	119368	117671	116182
rejected events	95673	90872	105405	103494	100872
rejected %	87%	84%	88%	87%	86%

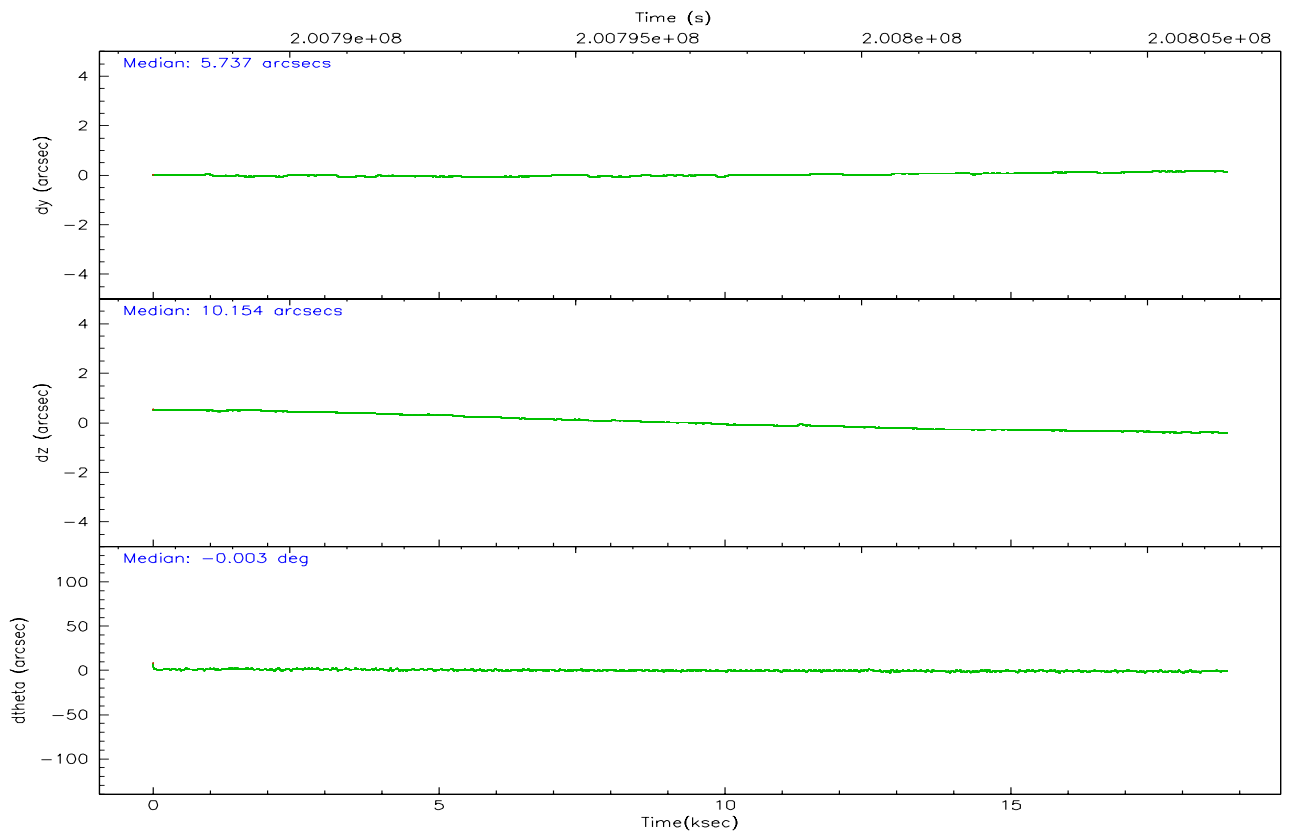
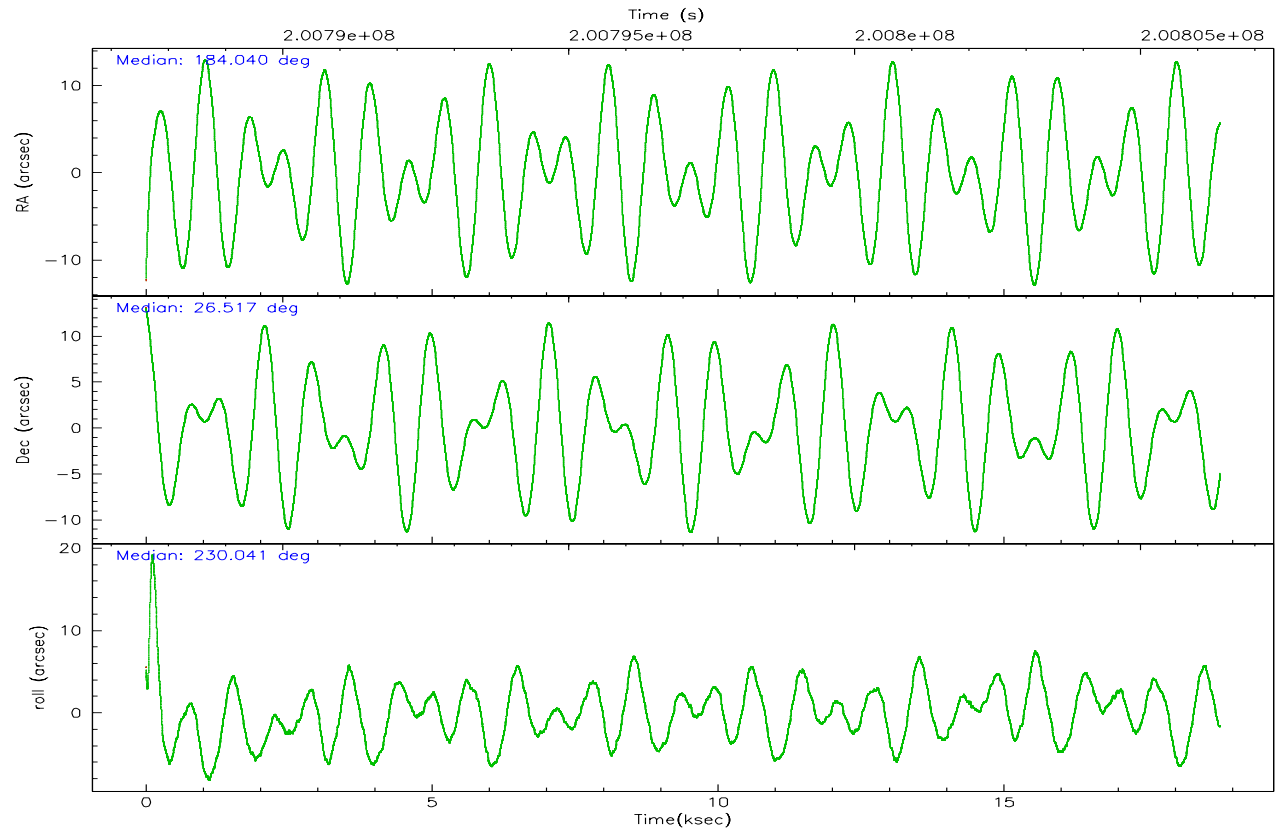
	ccd 0	ccd 1	ccd 2	ccd 3	ccd 6
grade 0 events	6147	7368	6309	6488	7018
	5%	6%	5%	5%	6%
grade 1 events	57	39	81	68	48
	0%	0%	0%	0%	0%
grade 2 events	2975	3151	2829	2710	2855
	2%	2%	2%	2%	2%
grade 3 events	1423	1528	1341	1323	1478
	1%	1%	1%	1%	1%
grade 4 events	1305	1476	1341	1394	1387
	1%	1%	1%	1%	1%
grade 5 events	3951	4192	3792	4510	4410
	3%	3%	3%	3%	3%
grade 6 events	2395	2779	2145	2264	2596
	2%	2%	1%	1%	2%
grade 7 events	91660	86635	101530	98914	96390
	83%	80%	85%	84%	82%

## 2.2 Compared Parameters

Parameter	Planned	Actual	Parameter	Planned	Actual
Instrument	ACIS	ACIS	Obspar format version number	6	6
Detector	ACIS-01236	ACIS-01236	Obspar file type	PREDICTED	ACTUAL
Grating	NONE	NONE	Obspar update status	NONE	UPDATED
Data mode	VFAINT	VFAINT	On-chip summing requested	N	N
Observation mode	POINTING	POINTING	Subarray requested	NONE	NONE
Pointing RA	184.045339	184.0401707064276	Alternating exposures requested	N	N
Pointing Dec	26.543902	26.51689639257565	Primary exposure time	0.000000	3.1
Pointing Roll	229.833829	230.0448110642112			
SIM focus pos (mm)	-0.782348	-0.7809083437167272			
SIM defocus (mm)	0	0.001439871863259334			
SIM translation stage pos (mm)	-225.840463	-225.8433433320239			
SIM translation stage offset (mm)	-7.752	-7.749109670905796			
Observation start time	200787804.184000	200786830.73893			
Observation start date	2004-05-12T22:22:20	2004-05-12T22:07:10			
Observation end time	200806404.184000	200806804.40231			
Observation end date	2004-05-13T03:32:20	2004-05-13T03:40:04			
Read mode	TIMED	TIMED			

## 2.3 Aspect





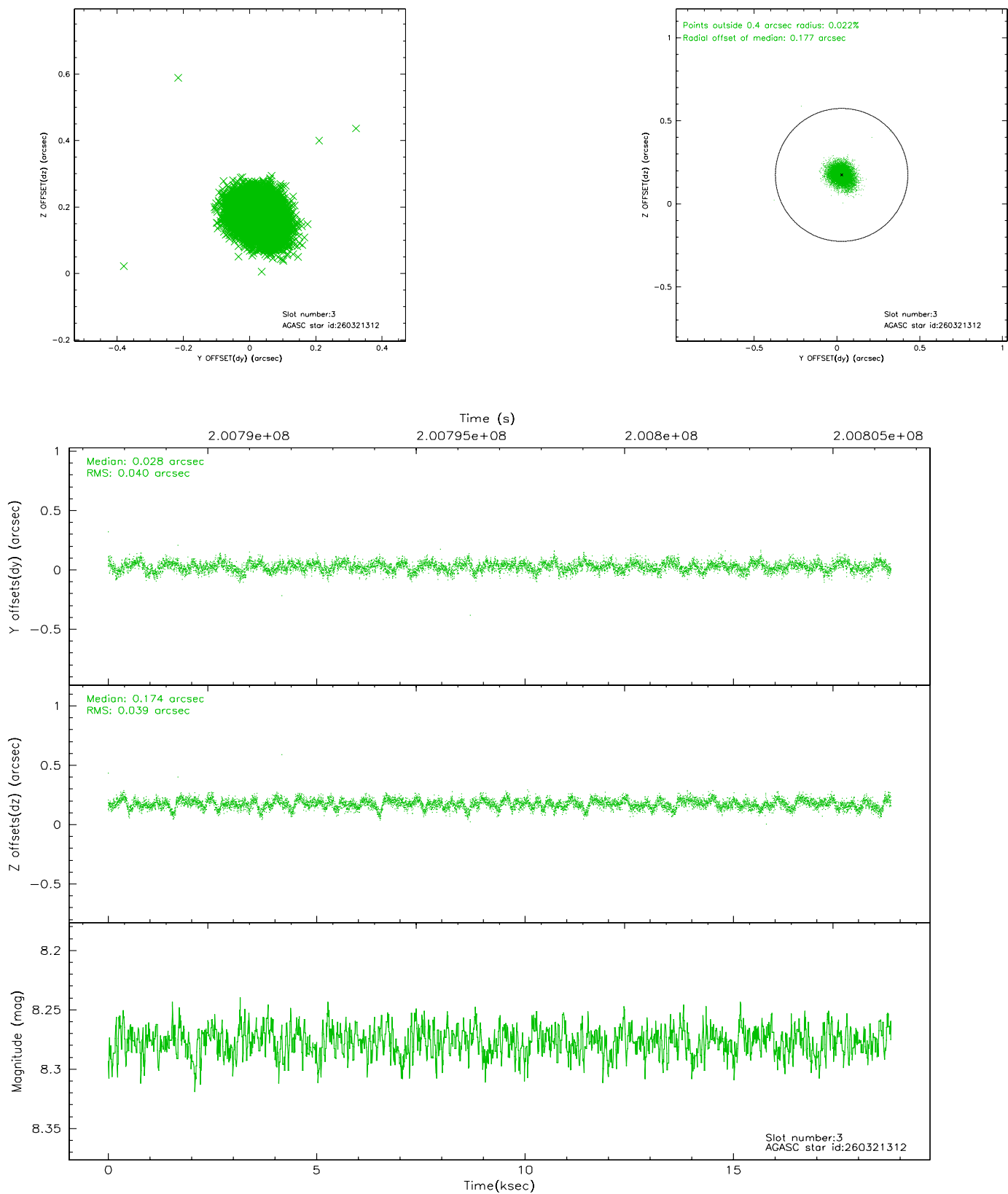
### Slot Statistics

slot	status	id	mag	n_pts	med_dy	med_dz	dr1	dr2	ra	dec	mean_y	mean_z
0	FID	ACIS-I-2	7.17	4583	-0.034	-0.019	0.009	0.014	0.000000	0.000000	-760.78	-998.10
1	FID	ACIS-I-4	7.14	4582	-0.011	0.033	0.007	0.011	0.000000	0.000000	2153.14	907.97
2	FID	ACIS-I-5	7.22	4581	-0.057	0.055	0.008	0.014	0.000000	0.000000	-1813.98	905.04
3	GUIDE	260321312	8.28	9164	0.028	0.174	0.058	0.096	184.034877	25.760374	2177.56	1793.95
4	GUIDE	260571288	9.36	9159	0.105	-0.111	0.083	0.134	183.941764	26.295680	898.86	321.10
5	GUIDE	260577864	10.01	9154	-0.098	-0.027	0.141	0.231	184.065495	26.976892	-1232.66	-955.98
6	GUIDE	260578056	10.13	9089	-0.032	0.038	0.116	0.189	184.079523	26.927120	-1124.94	-806.02
7	GUIDE	260579208	7.32	9165	-0.009	-0.068	0.059	0.092	183.575455	26.504798	1082.00	-1067.65

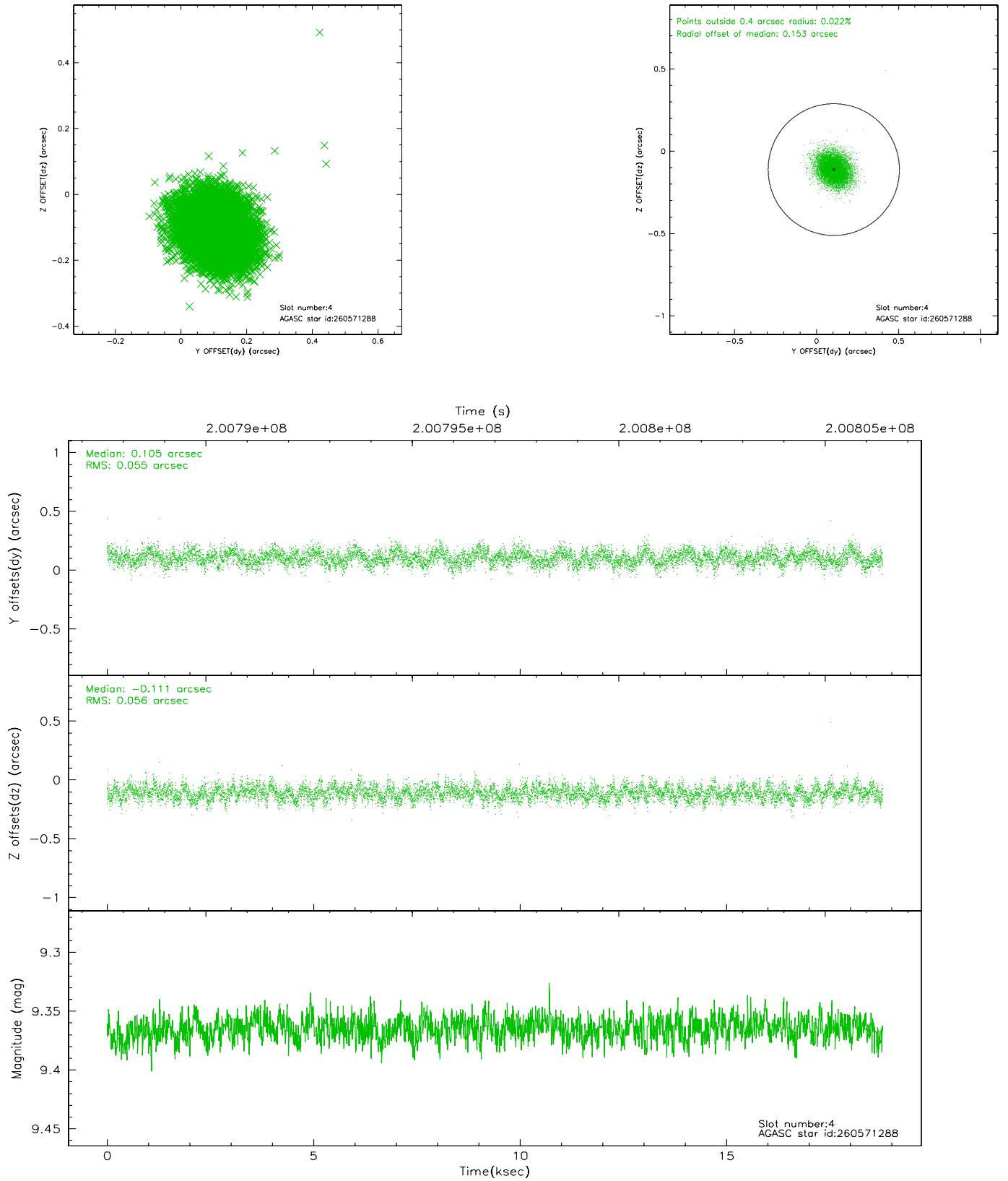


## 2.4 Star Slots

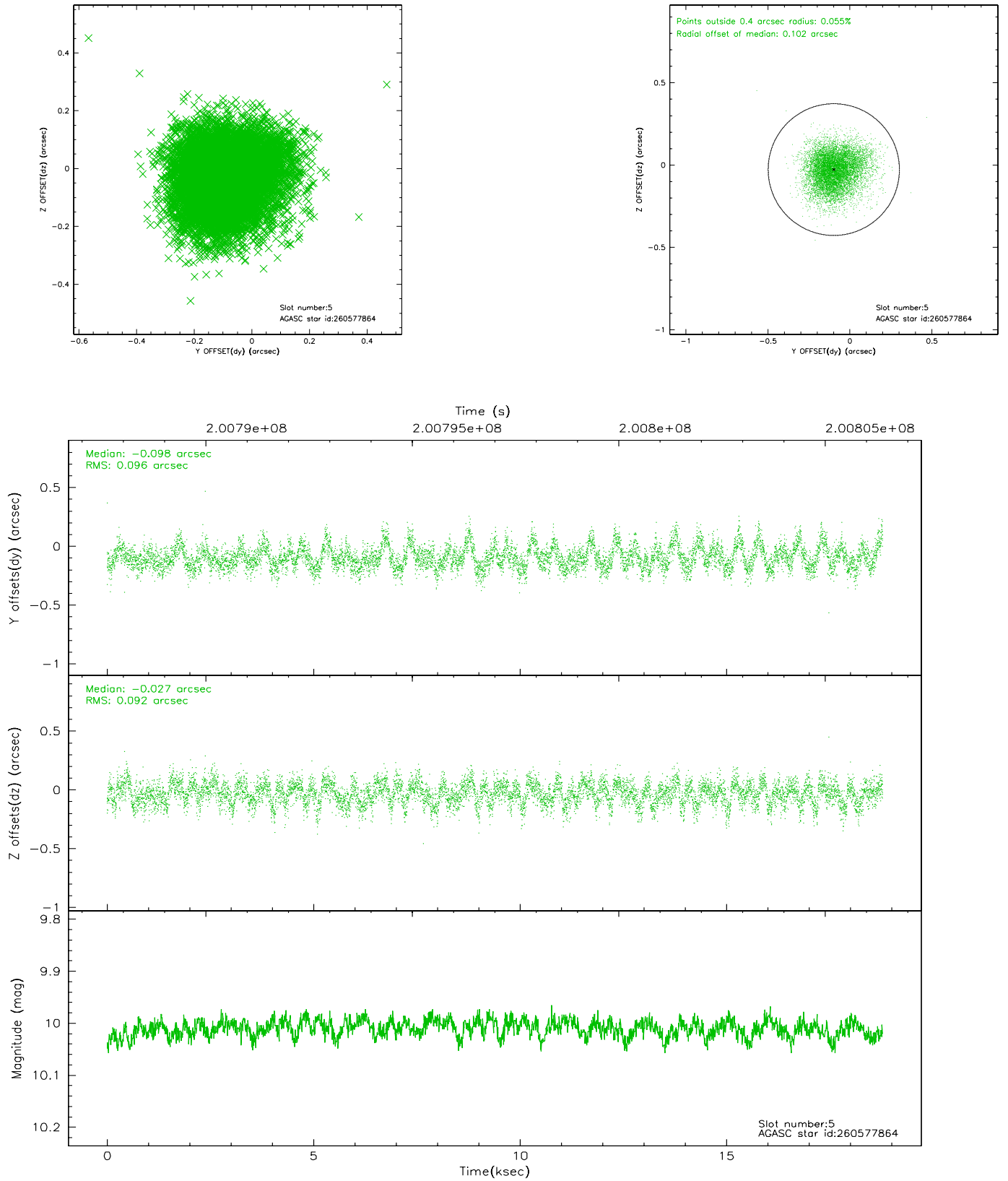
### 2.4.1 Slot 3



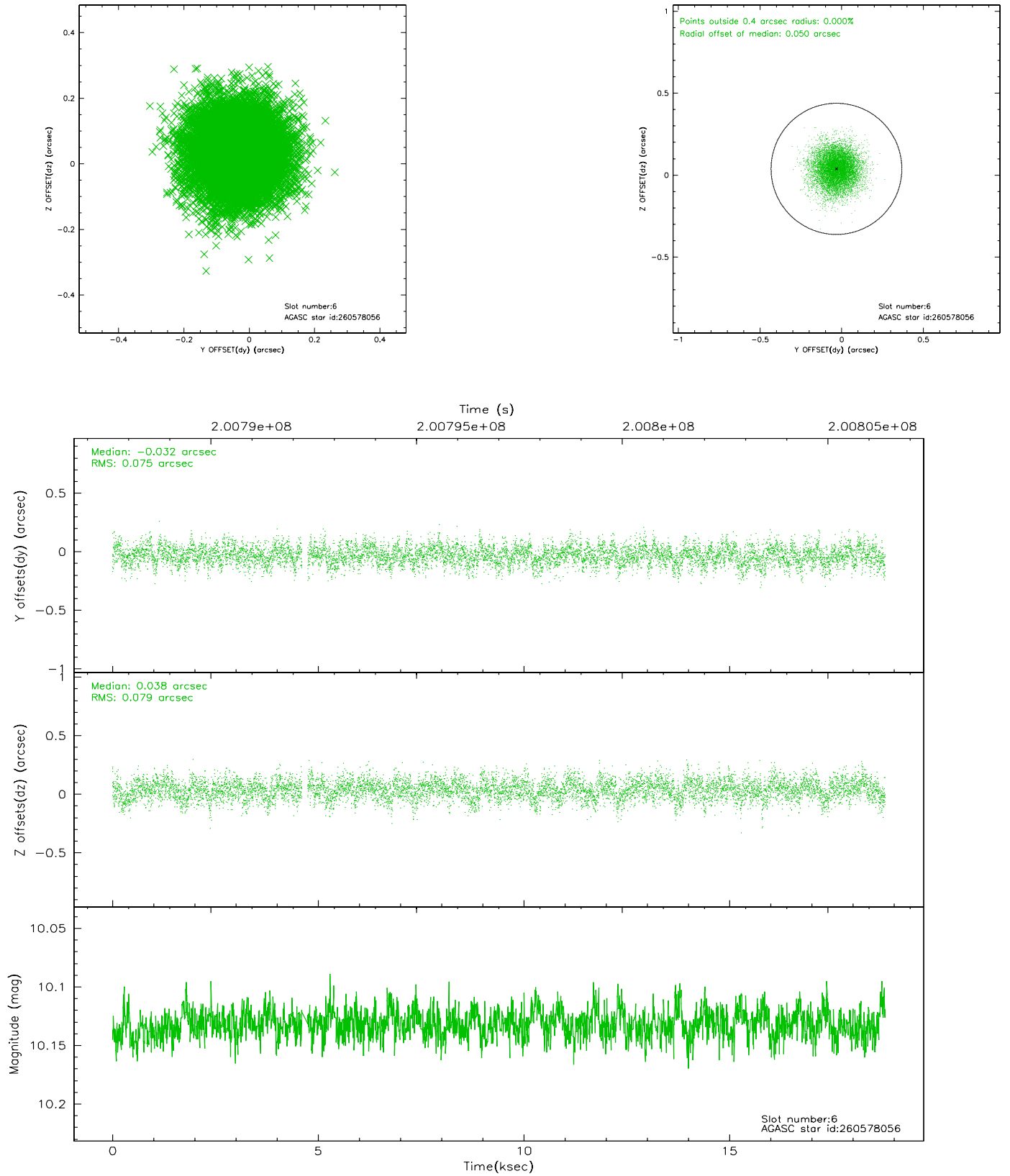
## 2.4.2 Slot 4



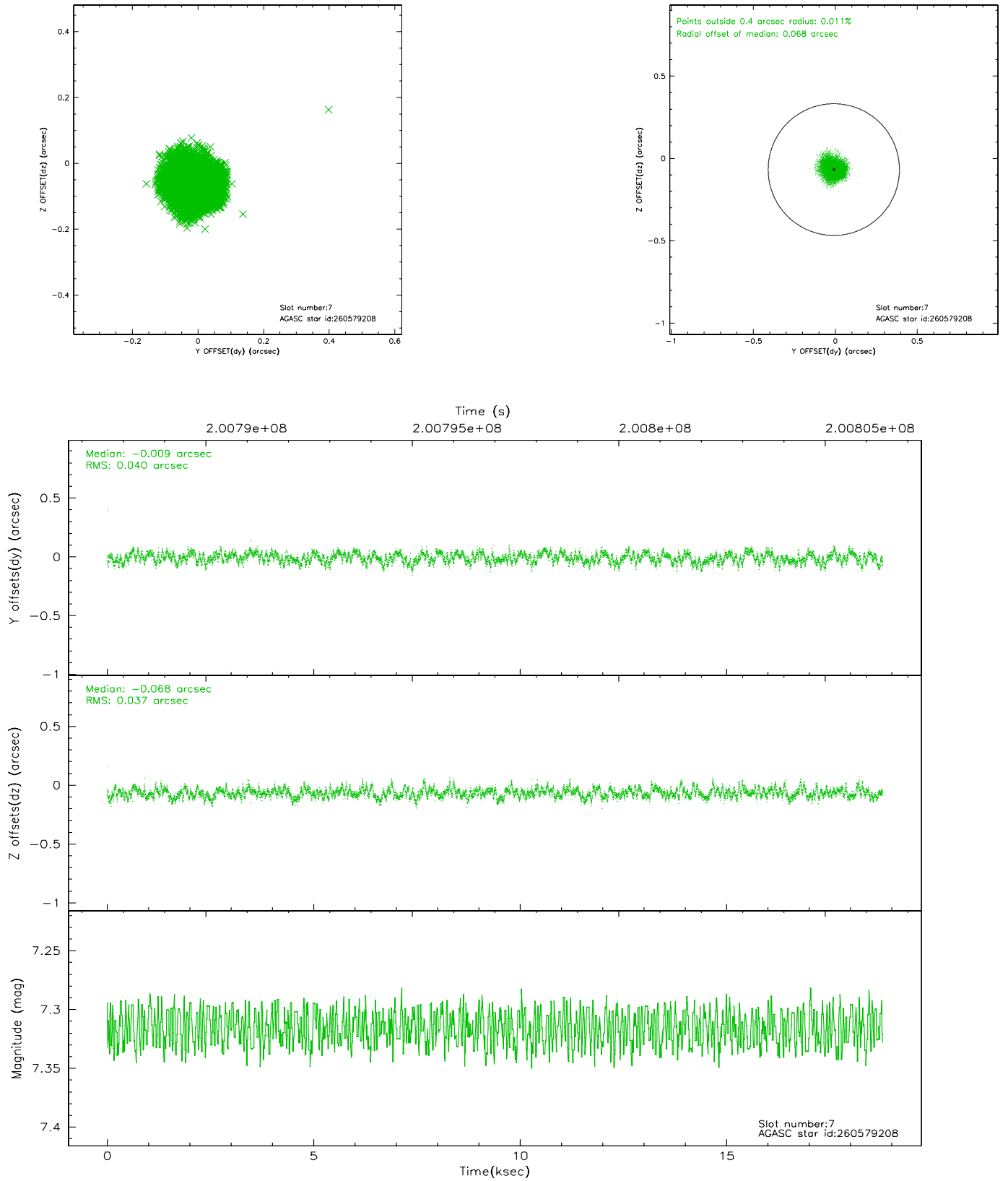
### 2.4.3 Slot 5



## 2.4.4 Slot 6

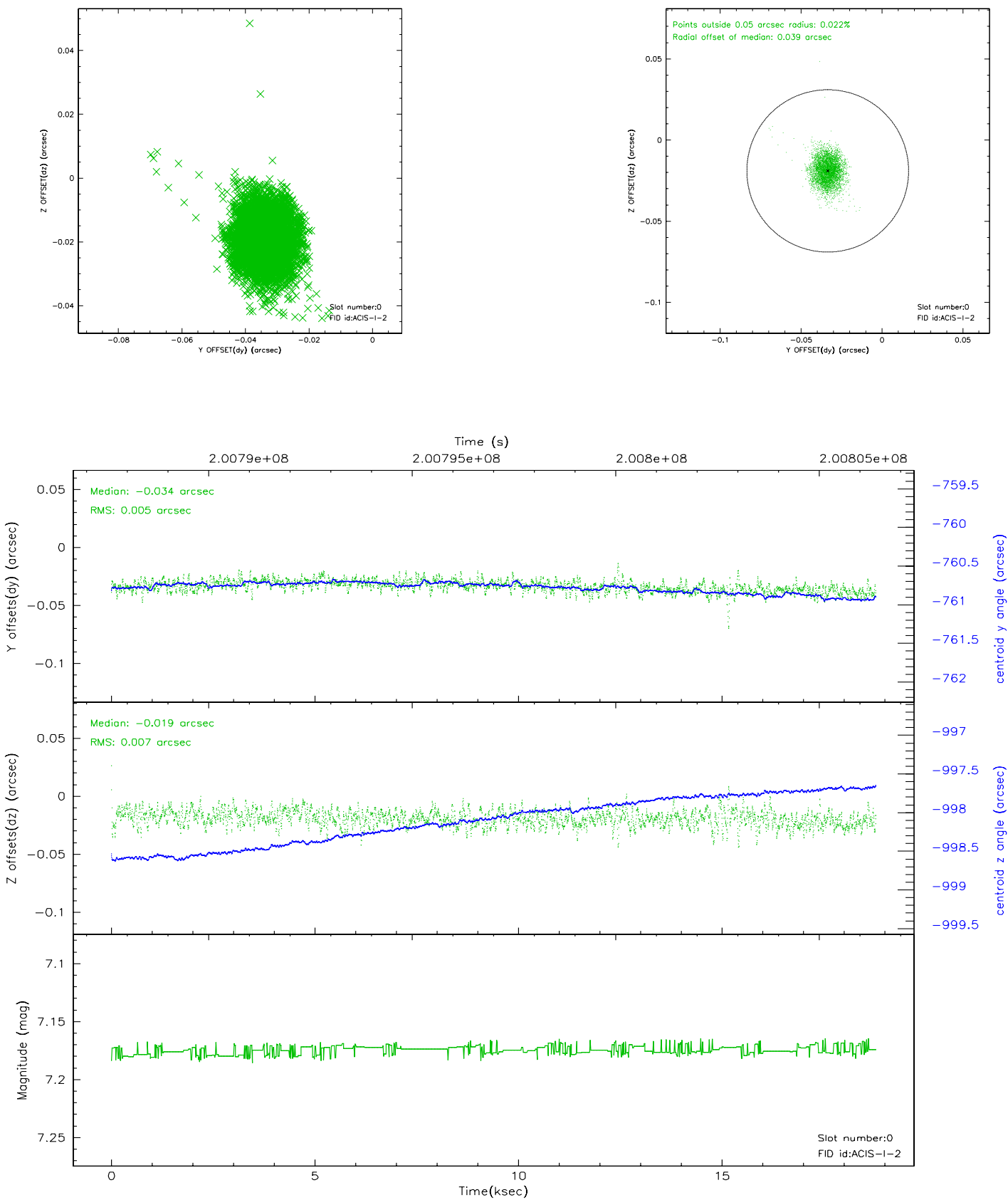


## 2.4.5 Slot 7

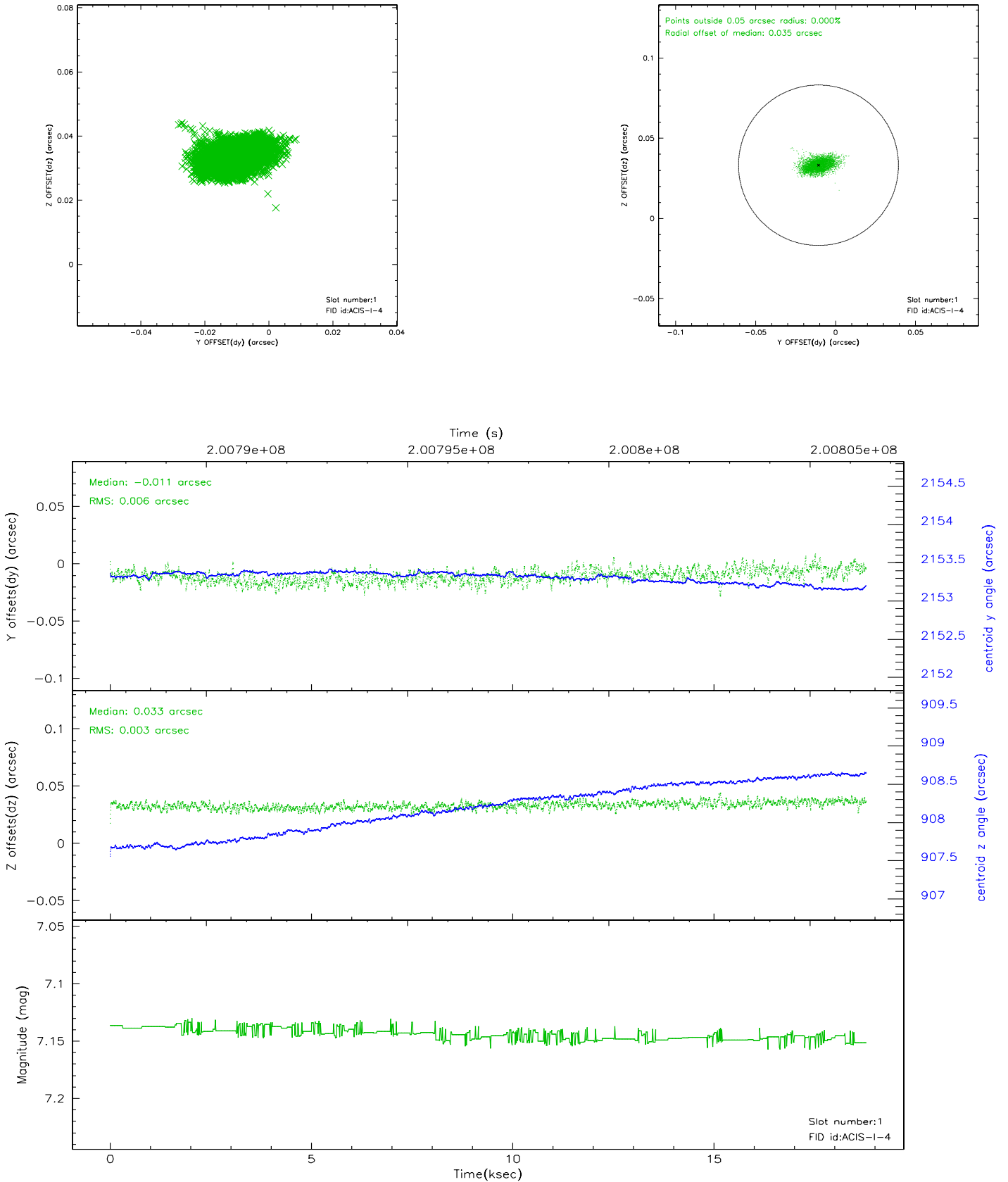


## 2.5 FID Slots

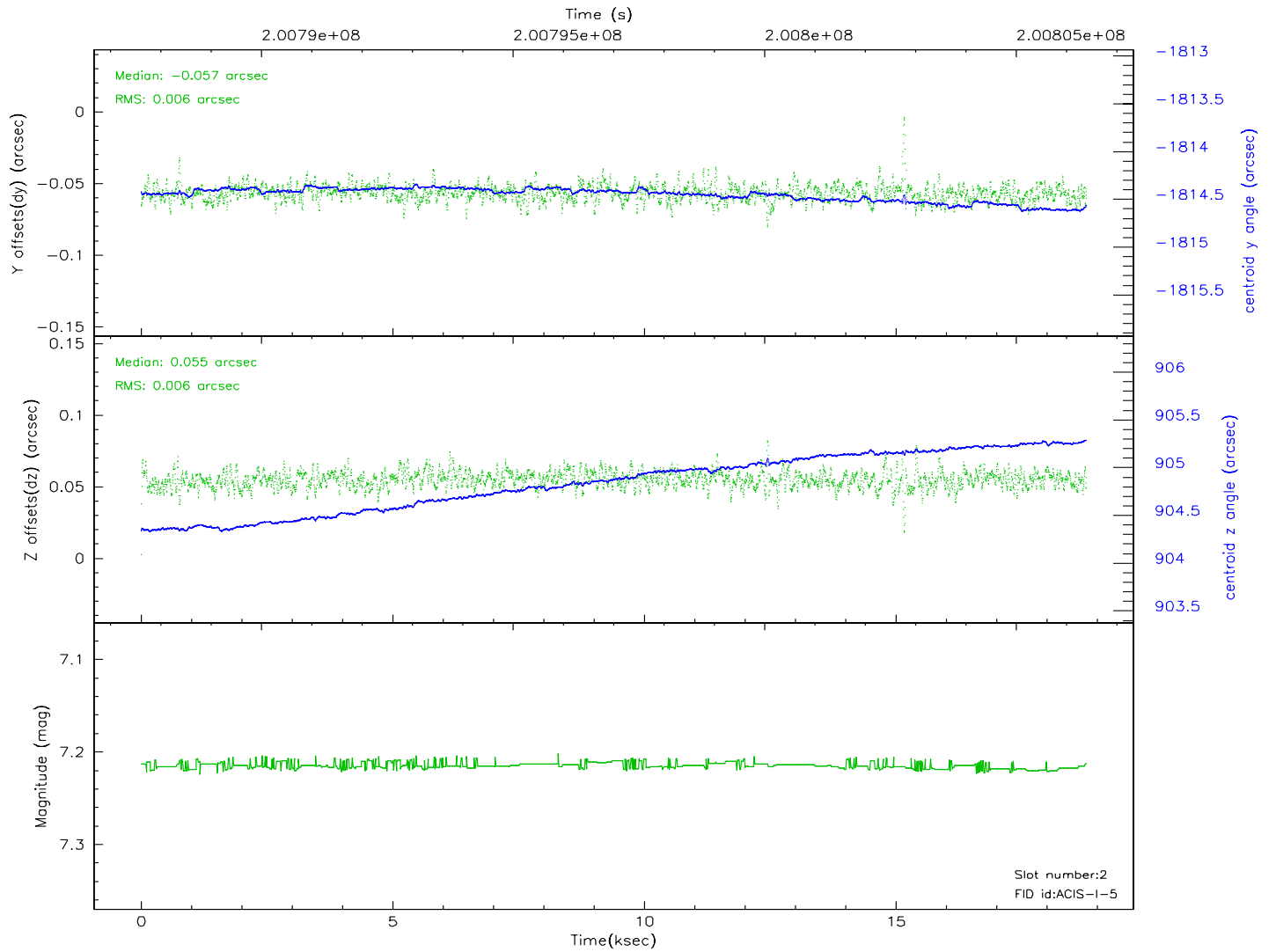
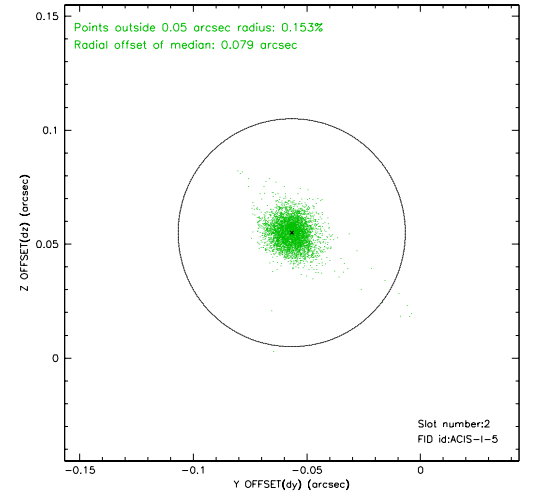
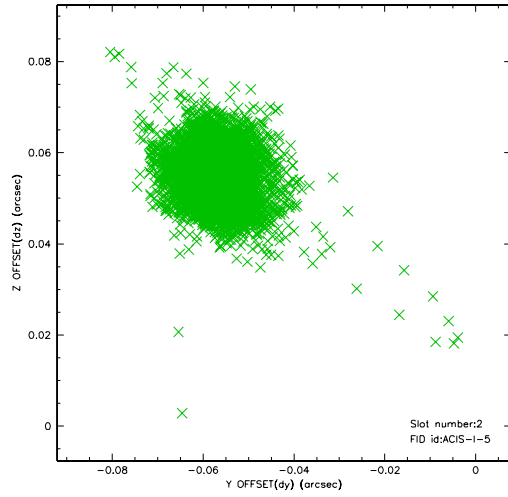
### 2.5.1 Slot 0



## 2.5.2 Slot 1

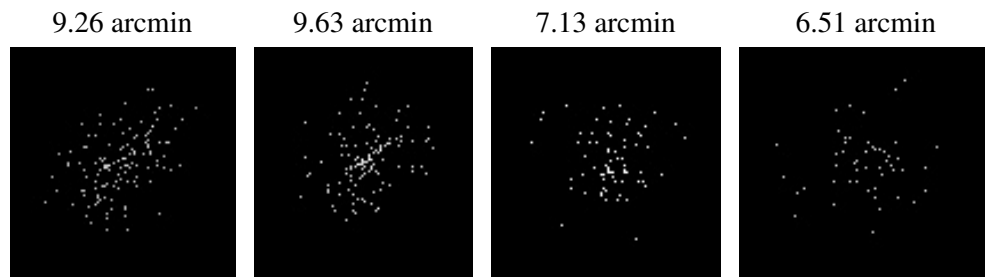


### 2.5.3 Slot 2





### 3 Point Sources



## A Summary

### A.1 Status

V&V Scientist	Jen Lauer
V&V Date (YYYY-MM-DD)	2006.05.19
V&V Edition	1
V&V Disposition and Status	OK
V&V Charge Time	18.739

### A.2 Comments