

V&V Reference Report

L2 ASCDS Version : 7.6.7.2

Observation 4851 - L2 Version 3
Chandra X-Ray Center

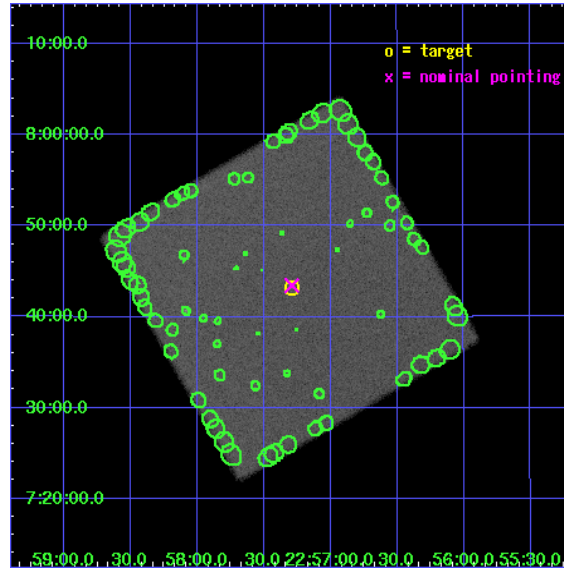
L2 Processing Date : Nov 23 2007

Contents

1	Front	2
2	OBI	3
2.1	OBI	3
2.1.1	Images	3
2.1.2	Parameters	4
2.1.3	Events	4
2.2	Compared Parameters	5
2.3	Aspect	6
2.4	Star Slots	9
2.4.1	Slot 3	9
2.4.2	Slot 4	10
2.4.3	Slot 5	11
2.4.4	Slot 6	12
2.4.5	Slot 7	13
2.5	FID Slots	14
2.5.1	Slot 0	14
2.5.2	Slot 1	15
2.5.3	Slot 2	16
3	Point Sources	17
A	Summary	18
A.1	Status	18
A.2	Comments	18

1 Front

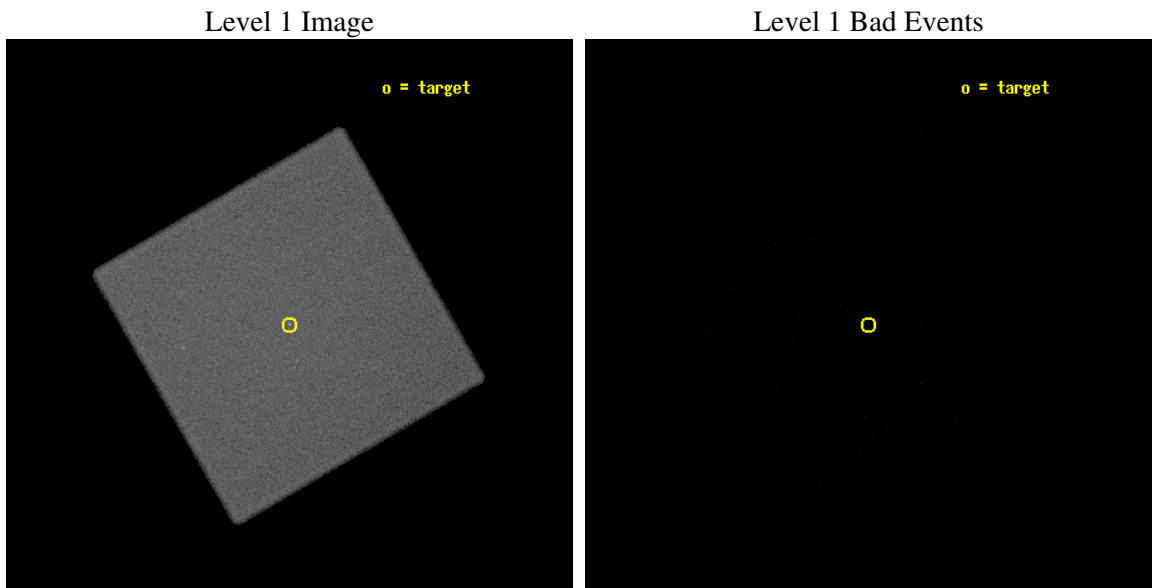
seq_num	700933
obs_id	4851
title	EXTENDED EMISSION AND ACCRETION RATES IN BL LACERTAE OBJECTS
observer	Dr. Rita Sambruna
object	PKS 2254+074
ra_targ	344.322083
dec_targ	7.720083
ra_nom	344.32265677071
dec_nom	7.7242116773906
roll_nom	105.00195559248
revision	3
ontime	20543.050906032
livetime	20416.301911067
l2events	655296



2 OBI

2.1 OBI

2.1.1 Images



2.1.2 Parameters

obi_num	0
ascdsver	7.6.11.2
caldbver	3.4.1
date	2007-11-23T23:18:50
revision	3

sched_exp_time	20670.000000
ontime	20543.050906032
l1events	988585

2.1.3 Events

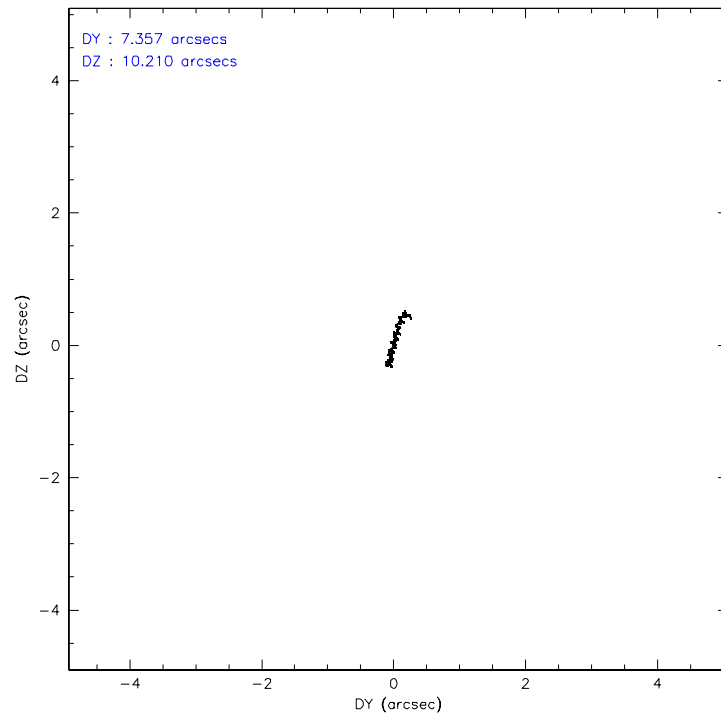
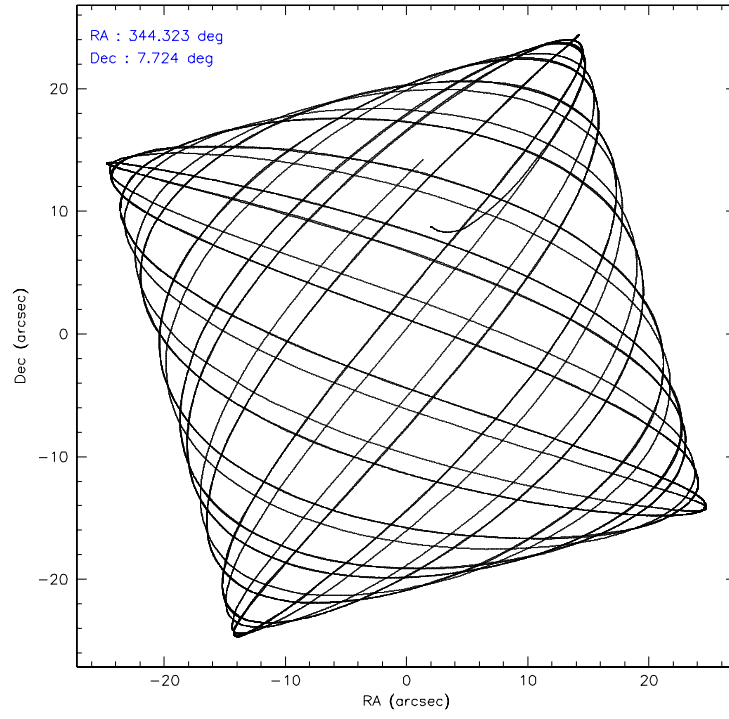
Level 1 Events

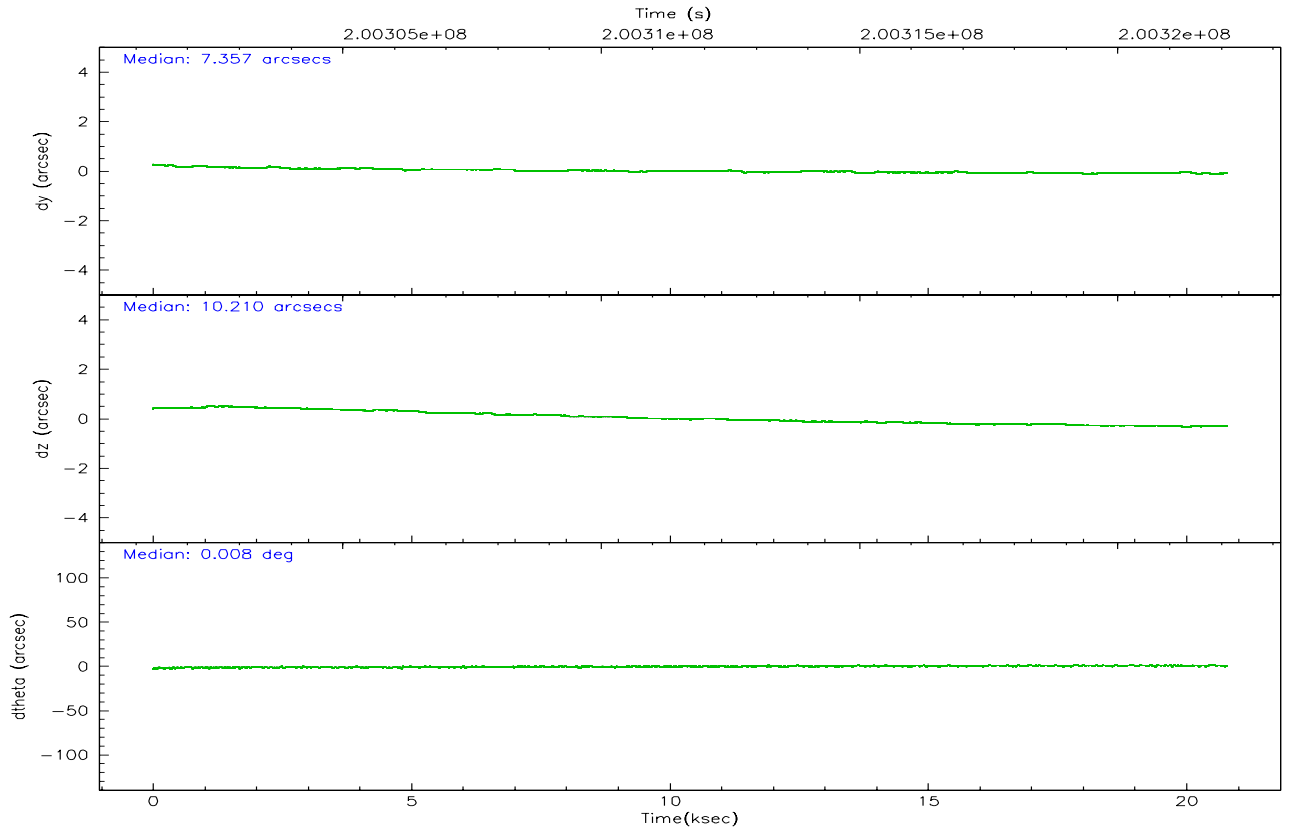
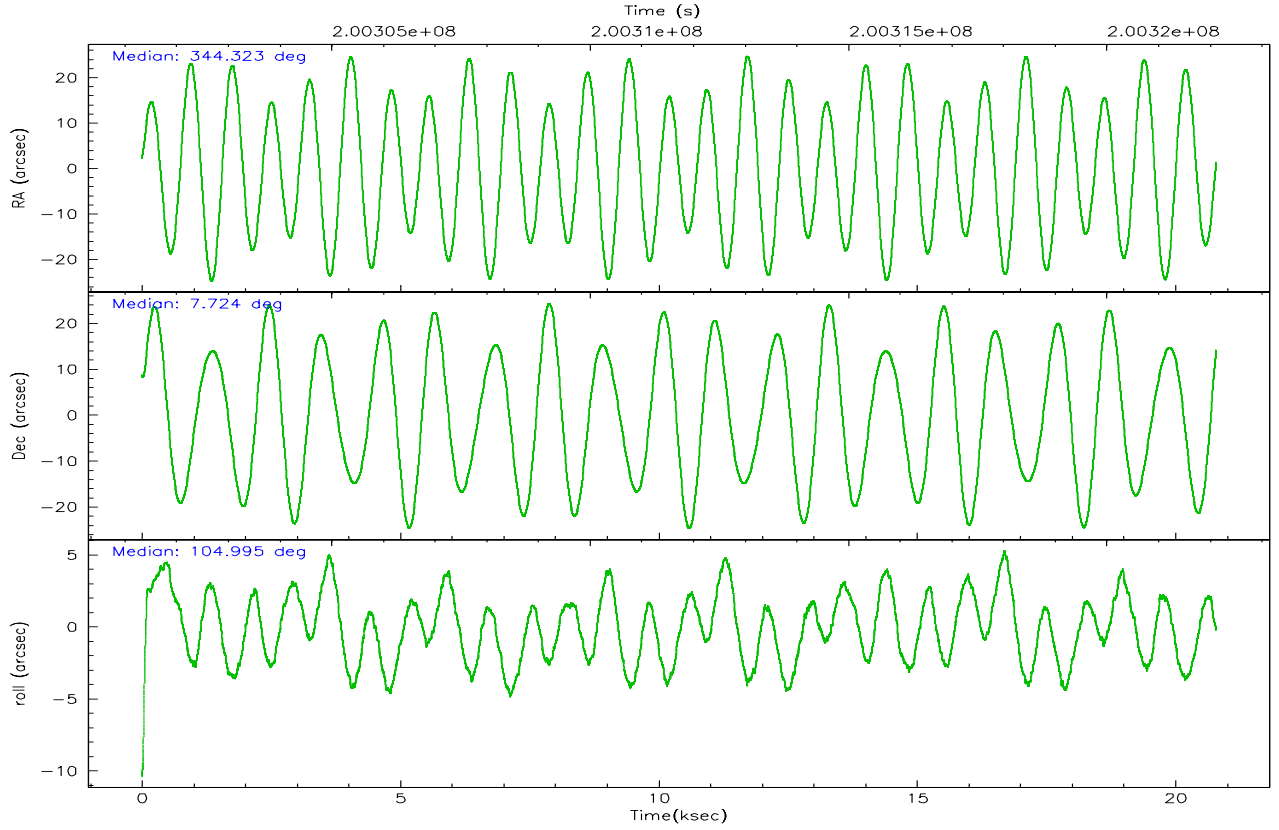
	segment 0
level 1 events	988585
rejected events	8166
rejected %	0%

2.2 Compared Parameters

Parameter	Planned	Actual	Parameter	Planned	Actual
Instrument	HRC	HRC	Obspar format version number	6	6
Detector	HRC-I	HRC-I	Obspar file type	PREDICTED	ACTUAL
Grating	NONE	NONE	Obspar update status	NONE	UPDATED
Data mode	OBSERVING	OBSERVING			
Observation mode	POINTING	POINTING			
Pointing RA	344.342432	344.3226567707135			
Pointing Dec	7.705499	7.72421167739065			
Pointing Roll	105.094805	105.0019555924828			
SIM focus pos (mm)	-1.040293	-1.038866356238299			
SIM defocus (mm)	0	0.001426264420575141			
SIM translation stage pos (mm)	126.985494	126.9829799899862			
SIM translation stage offset (mm)	0	0.002508901615314585			
Observation start time	200301441.184000	200300464.62997			
Observation start date	2004-05-07T07:16:17	2004-05-07T07:01:04			
Observation end time	200322111.184000	200323778.7685			
Observation end date	2004-05-07T13:00:47	2004-05-07T13:29:38			

2.3 Aspect



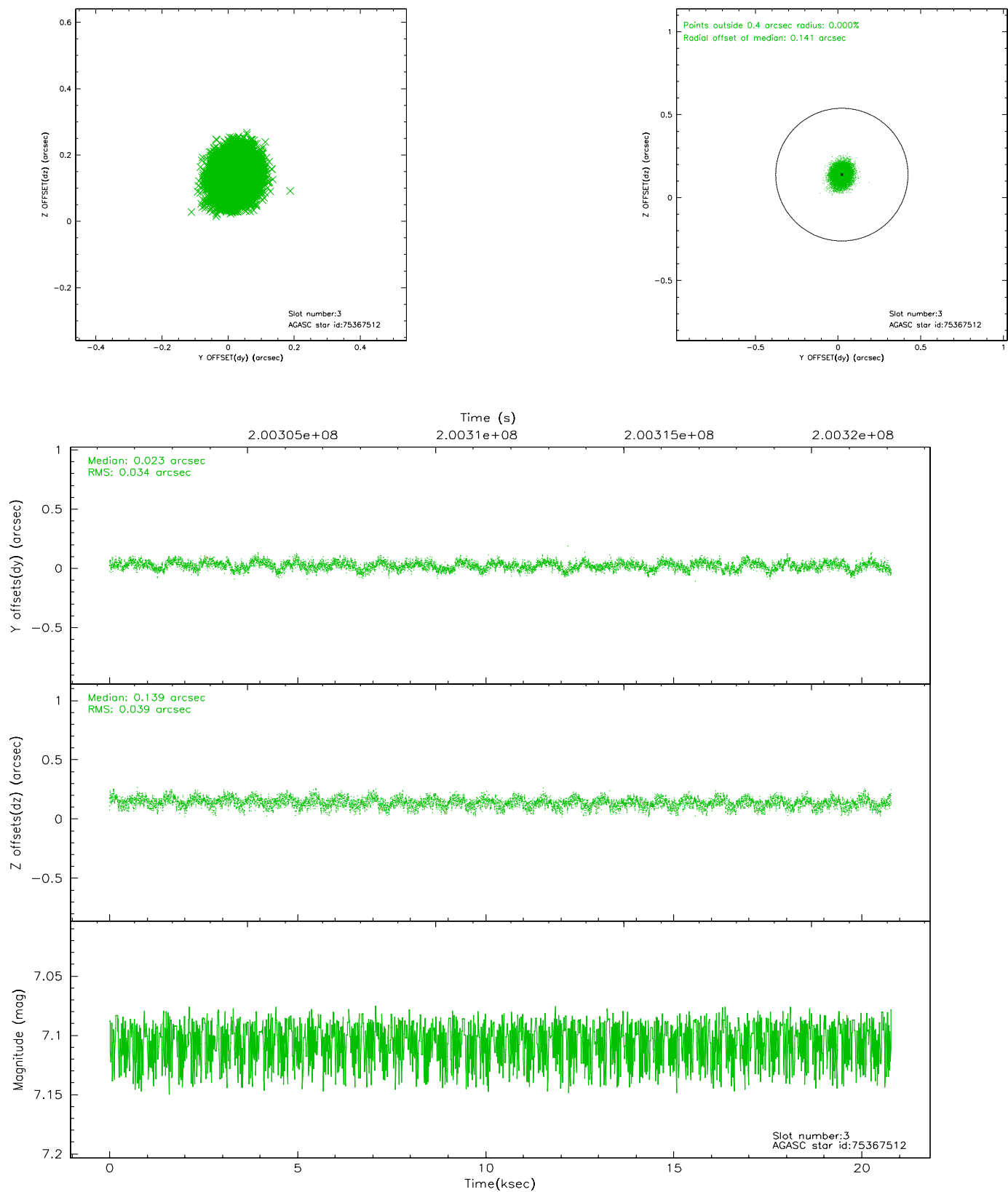


Slot Statistics

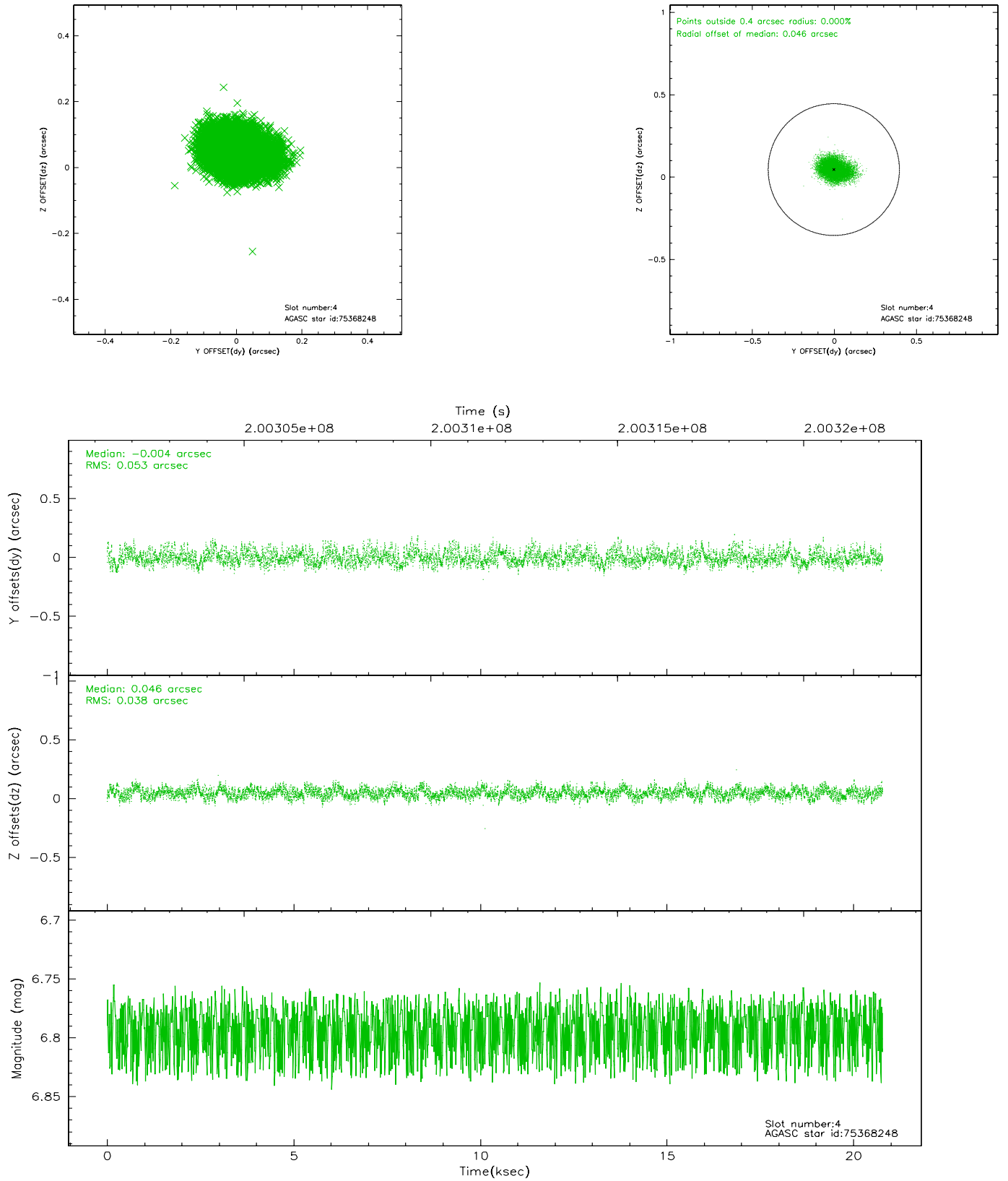
slot	status	id	mag	n_pts	med_dy	med_dz	dr1	dr2	ra	dec	mean_y	mean_z
0	FID	HRC-I-1	7.00	5071	-0.023	0.015	0.010	0.015	0.000000	0.000000	-762.98	-1298.18
1	FID	HRC-I-2	7.04	5071	0.117	-0.056	0.009	0.017	0.000000	0.000000	849.64	-1300.07
2	FID	HRC-I-3	7.09	5070	0.026	-0.049	0.007	0.012	0.000000	0.000000	-1191.27	1006.06
3	GUIDE	75367512	7.10	10142	0.023	0.139	0.056	0.088	344.948741	7.356320	-1775.74	-1762.82
4	GUIDE	75368248	6.79	10137	-0.004	0.046	0.070	0.112	344.677611	7.340077	-1581.55	-812.81
5	GUIDE	75370000	8.79	10131	-0.098	-0.353	0.095	0.150	343.811330	7.452557	-384.75	2067.10
6	GUIDE	76289944	8.04	10142	0.068	0.106	0.077	0.131	345.026815	7.383794	-1752.25	-2057.69
7	GUIDE	151135528	7.80	10140	0.008	0.068	0.068	0.104	344.600252	7.631155	-497.56	-818.69

2.4 Star Slots

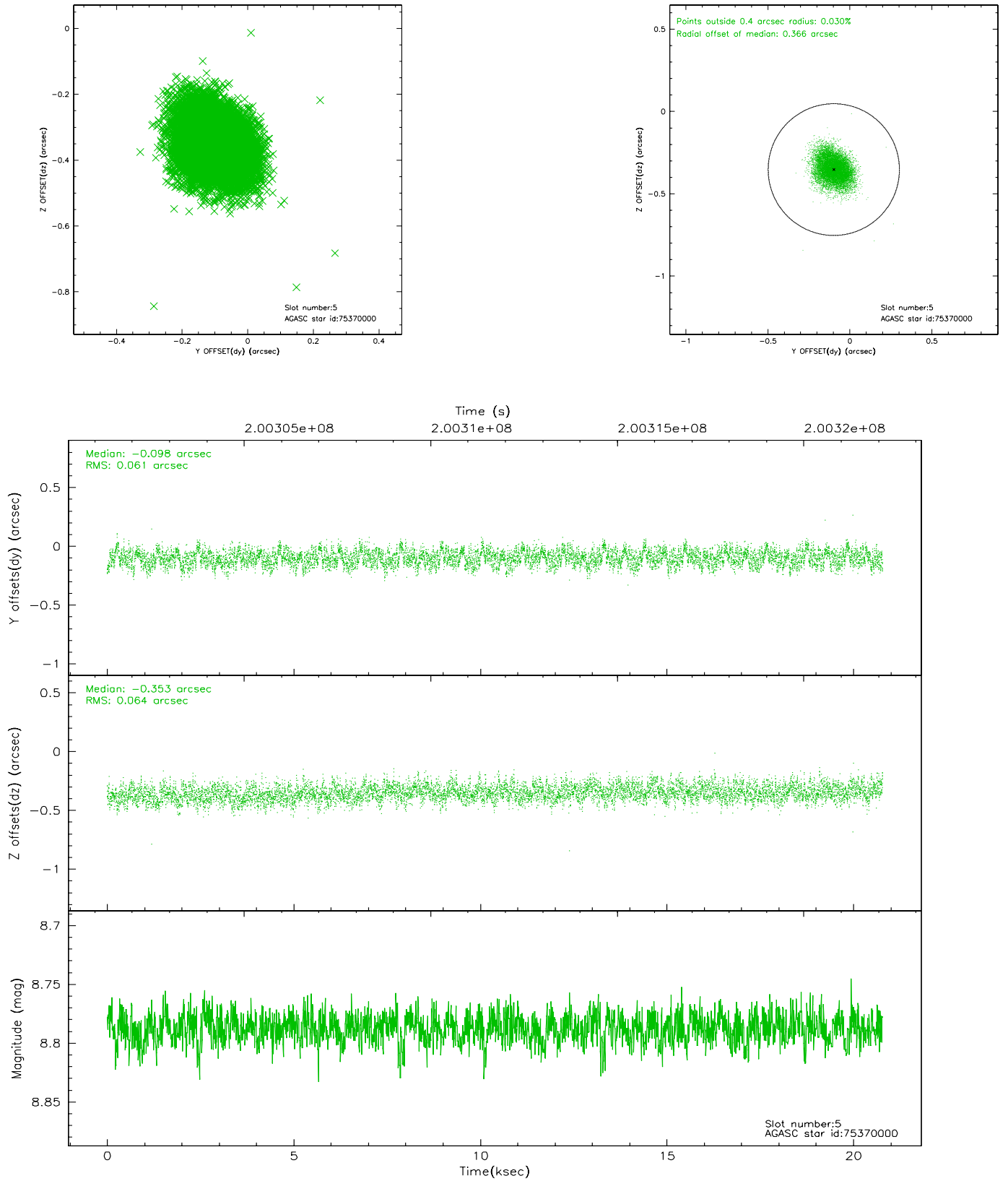
2.4.1 Slot 3



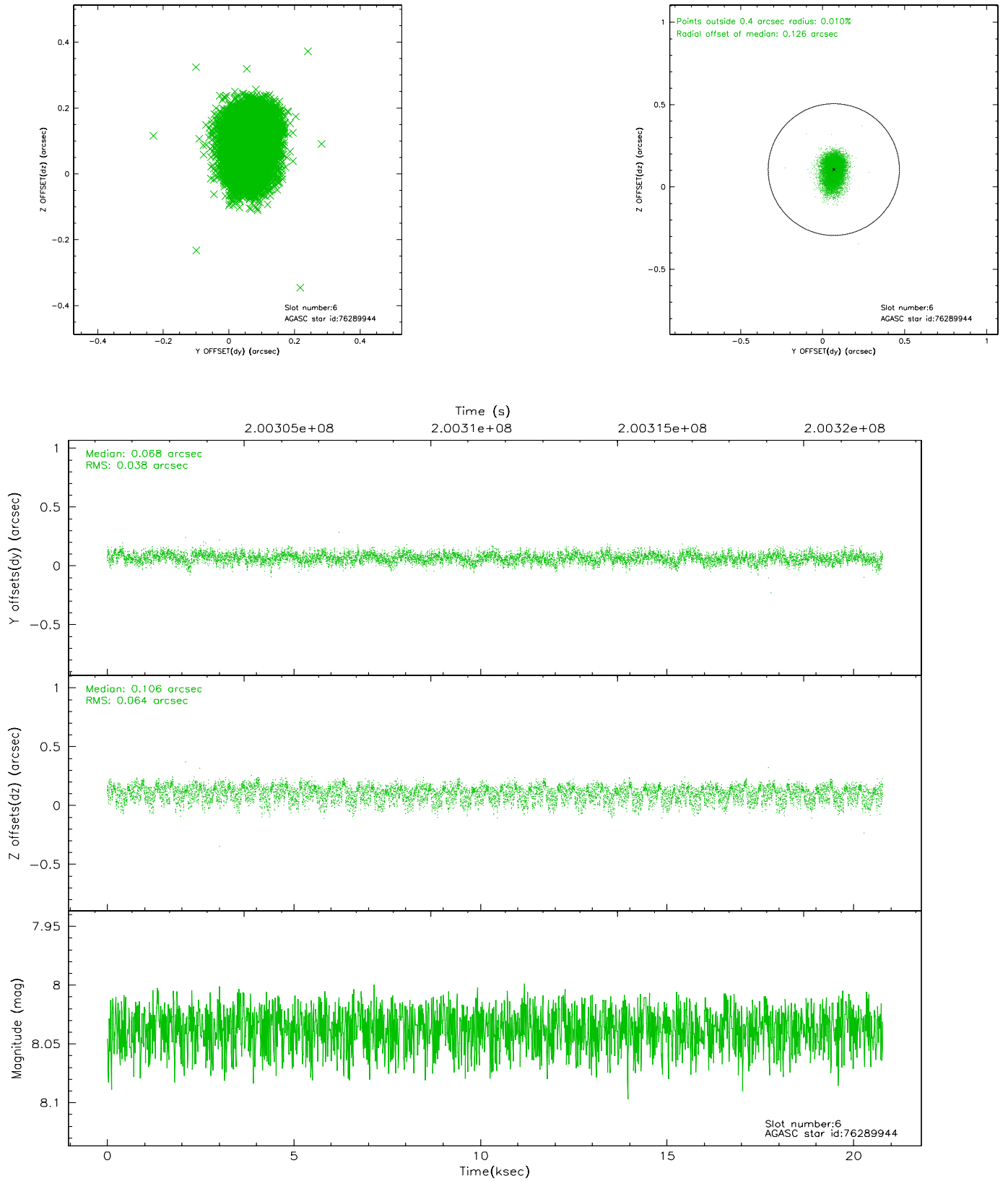
2.4.2 Slot 4



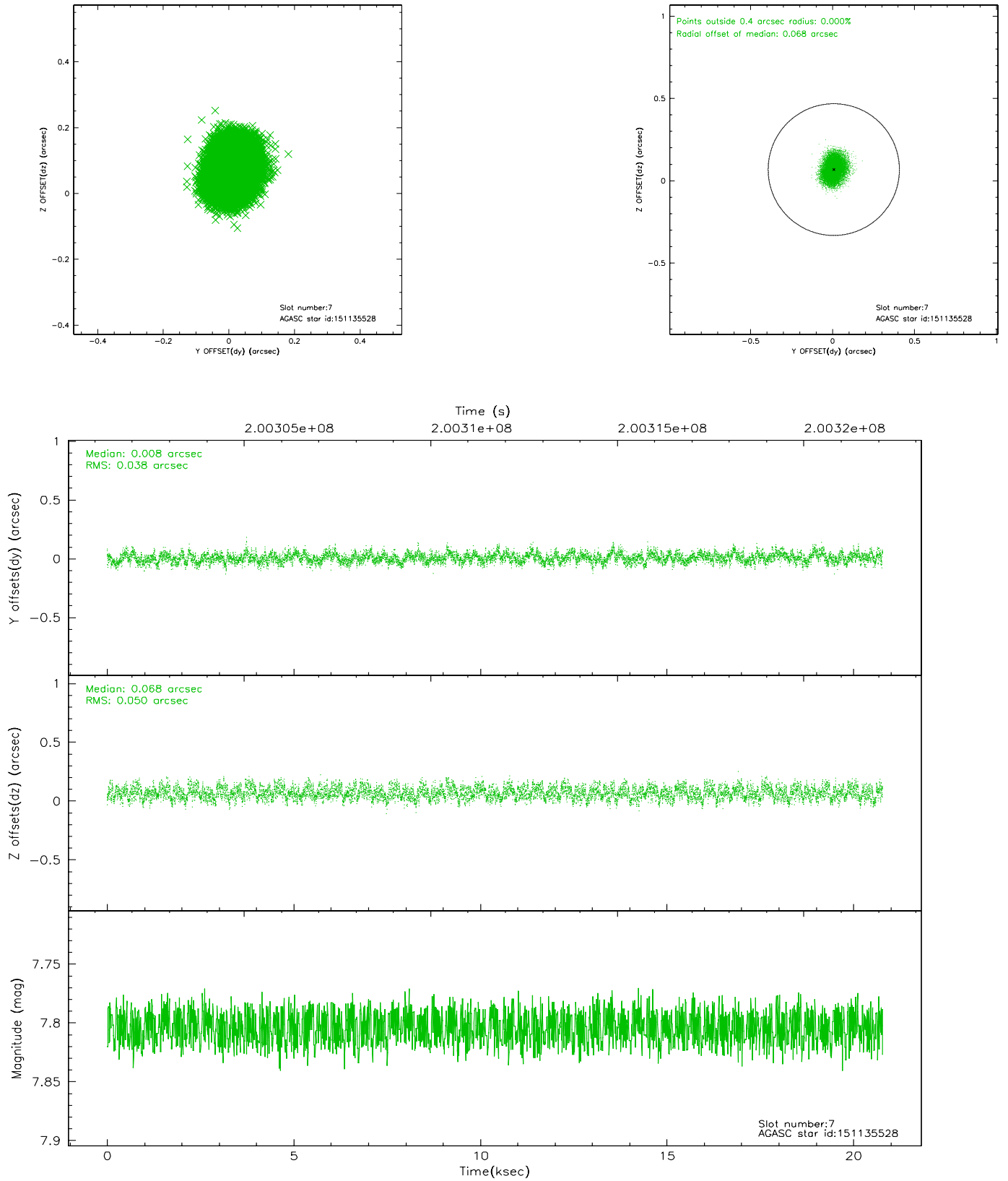
2.4.3 Slot 5



2.4.4 Slot 6

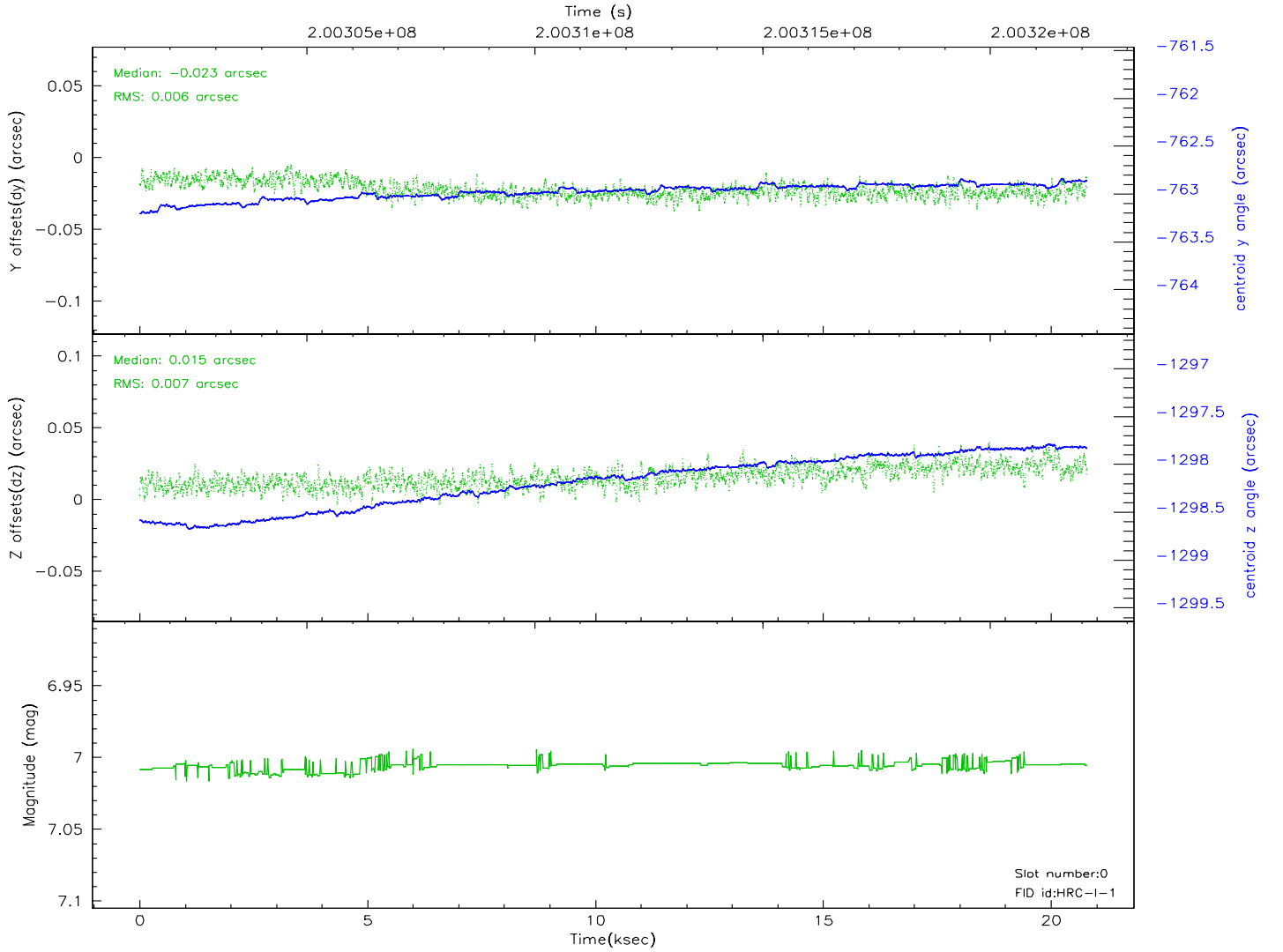
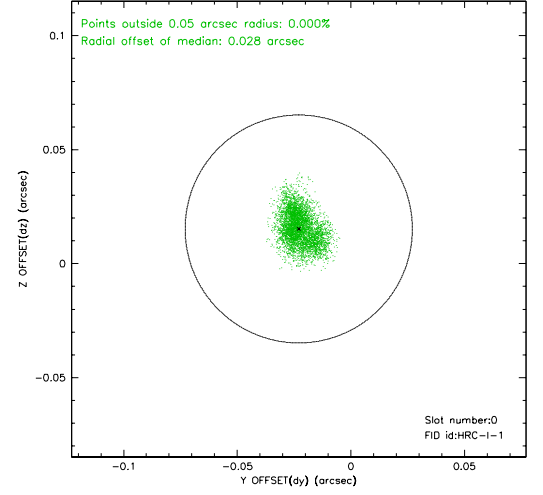
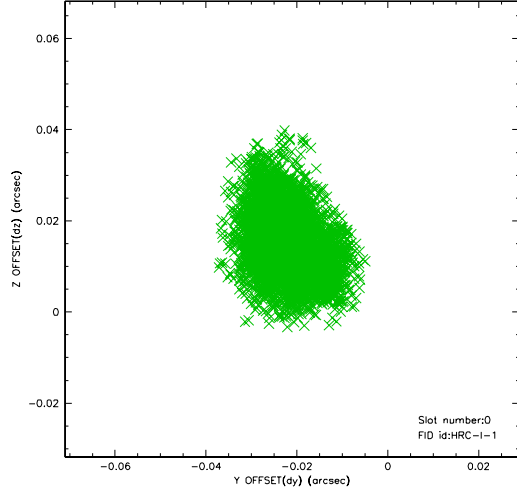


2.4.5 Slot 7

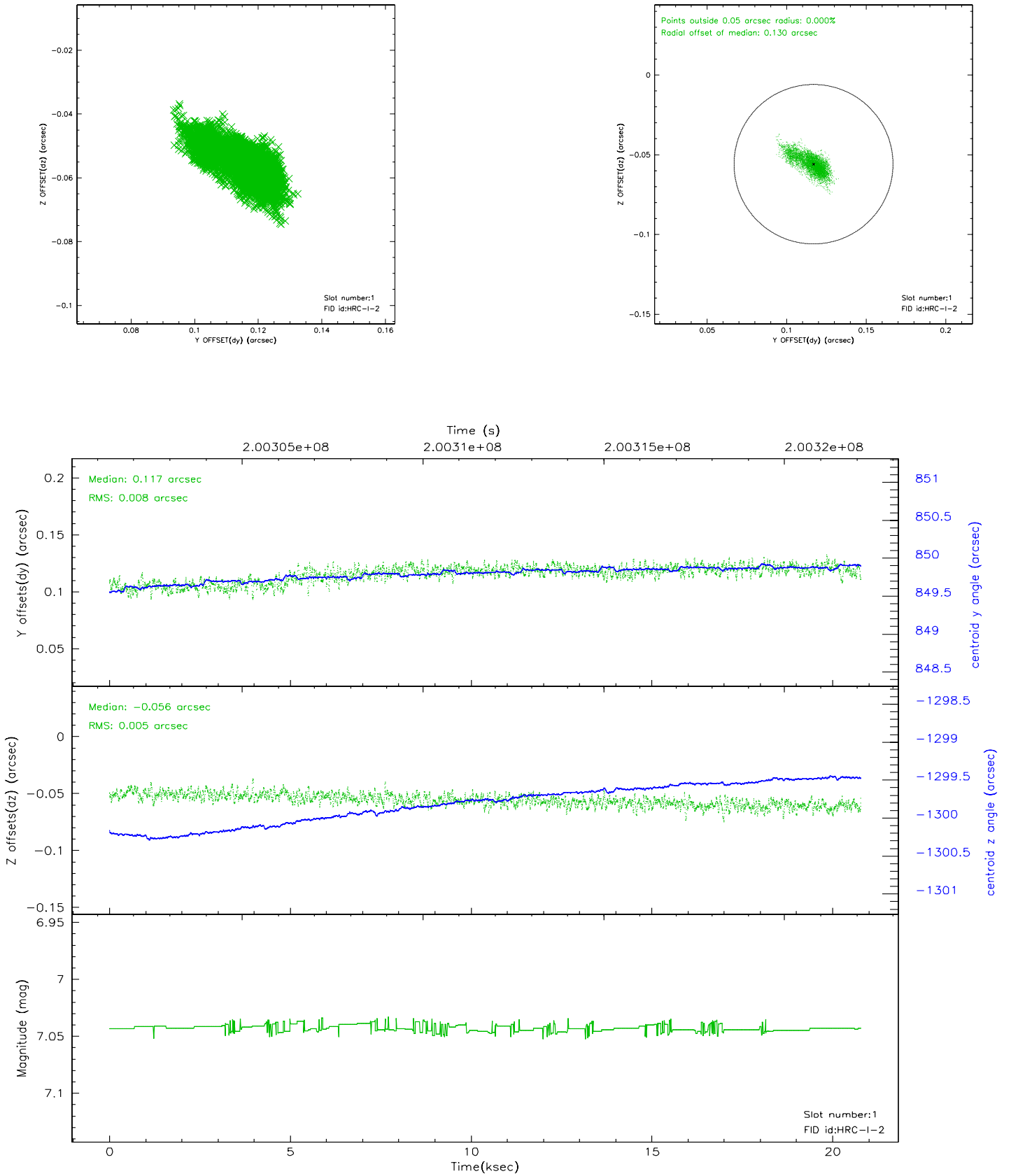


2.5 FID Slots

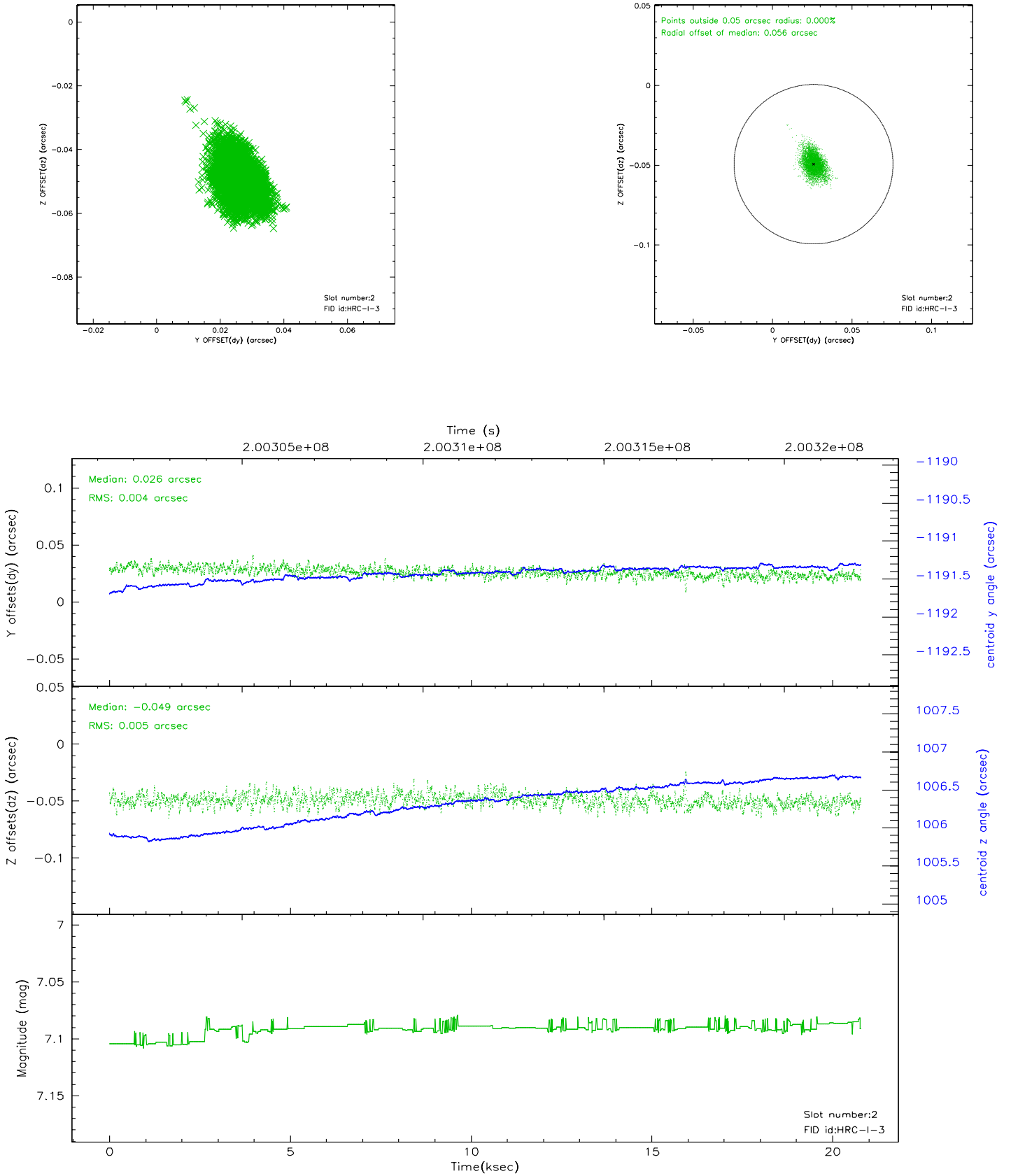
2.5.1 Slot 0



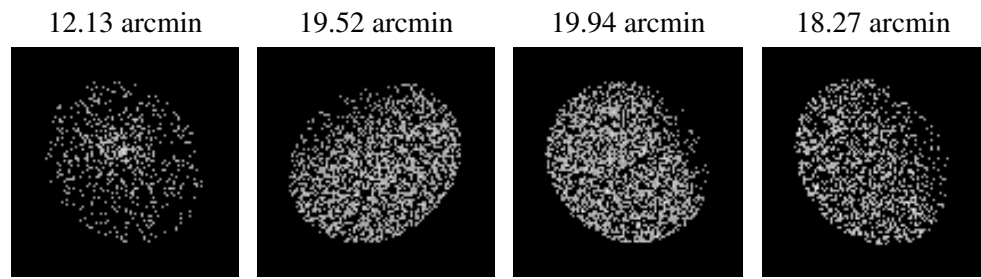
2.5.2 Slot 1



2.5.3 Slot 2



3 Point Sources



A Summary

A.1 Status

V&V Scientist	Beth Sundheim
V&V Date (YYYY-MM-DD)	2007.12.05
V&V Edition	1
V&V Disposition and Status	OK
V&V Charge Time	20.543

A.2 Comments

The current observation has been reprocessed as part of Repro III ('C' supplement) the purpose of which is to update all HRC-I ObsIDs since Jan 2000 to the latest calibrations available for that configuration. Specifically, we are updating the DEGAP solution and the Gain Maps applied. For more information see the Repro IIIC web page at:

<http://asc.harvard.edu/cda/repro3.html#IIIC>

and the associated links.