

# V&V Reference Report

## L2 ASCDS Version : 7.6.7.1

Observation 4521 - L2 Version 3  
Chandra X-Ray Center

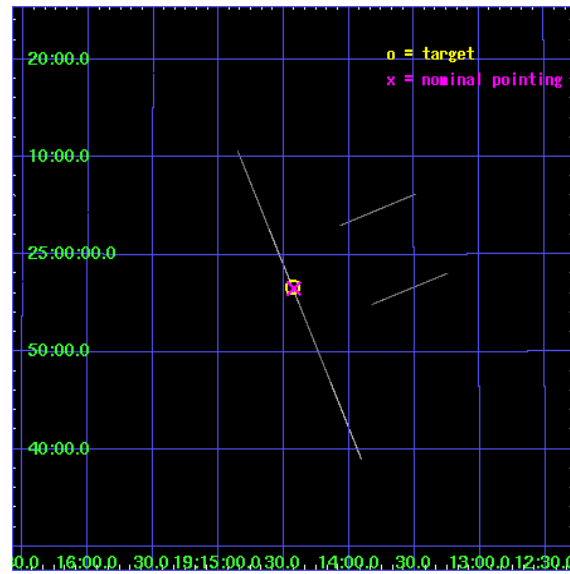
L2 Processing Date : Apr 11 2008

## Contents

<b>1</b>	<b>Front</b>	<b>2</b>
<b>2</b>	<b>OBI</b>	<b>3</b>
2.1	OBI . . . . .	3
2.1.1	Images . . . . .	3
2.1.2	Parameters . . . . .	4
2.1.3	Events . . . . .	4
2.2	Compared Parameters . . . . .	5
2.3	Aspect . . . . .	6
2.4	Star Slots . . . . .	9
2.4.1	Slot 3 . . . . .	9
2.4.2	Slot 4 . . . . .	10
2.4.3	Slot 5 . . . . .	11
2.4.4	Slot 6 . . . . .	12
2.4.5	Slot 7 . . . . .	13
2.5	FID Slots . . . . .	14
2.5.1	Slot 0 . . . . .	14
2.5.2	Slot 1 . . . . .	15
2.5.3	Slot 2 . . . . .	16
<b>A</b>	<b>Summary</b>	<b>17</b>
A.1	Status . . . . .	17
A.2	Comments . . . . .	17

# 1 Front

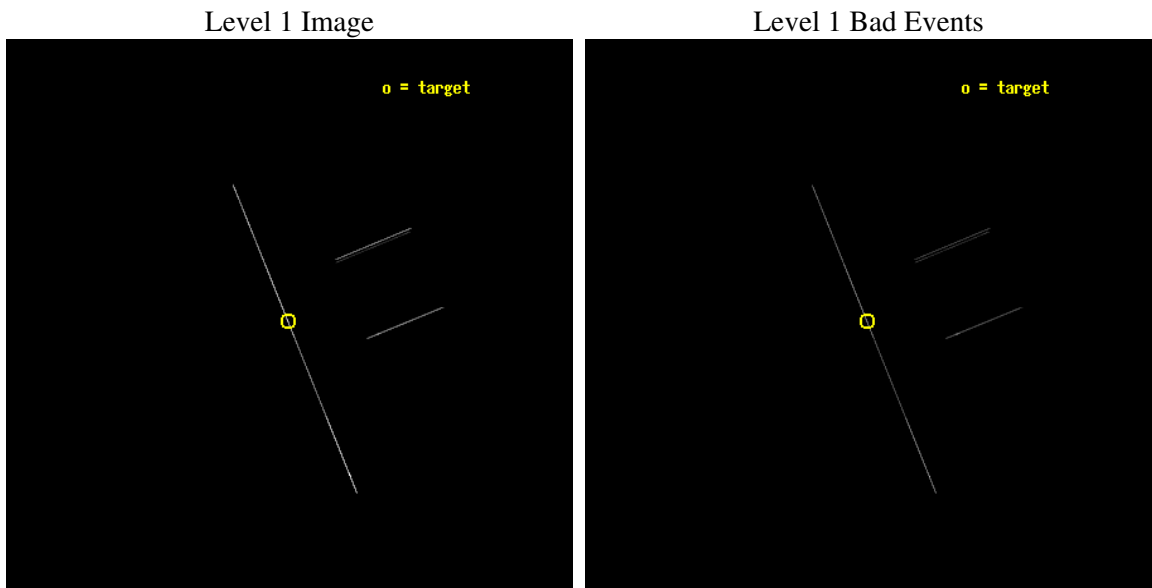
seq_num	300115
obs_id	4521
title	Continued Monitoring of the Orbital Evolution of RX J1914.4+2456
observer	Dr. Tod Strohmayer
object	RX J1914.4+2456
ra_targ	288.60875
dec_targ	24.945444
ra_nom	288.60540027151
dec_nom	24.94234160319
roll_nom	247.7985071198
revision	3
ontime	15144.25
livetime	15085.092773438
ontime2	15144.25
ontime3	15144.25
ontime5	15144.25
ontime6	15144.25
ontime7	15144.25
ontime8	15144.25
l2events	211199



## 2 OBI

### 2.1 OBI

#### 2.1.1 Images



## 2.1.2 Parameters

obi_num	0
ascdsver	7.6.11.6
caldsver	3.4.4
date	2008-04-11T22:53:14
revision	3

sched_exp_time	15000.000000
ontime	15144.25
ontime2	15144.25
ontime3	15144.25
ontime5	15144.25
ontime6	15144.25
ontime7	15144.25
ontime8	15144.25
l1events	352857

## 2.1.3 Events

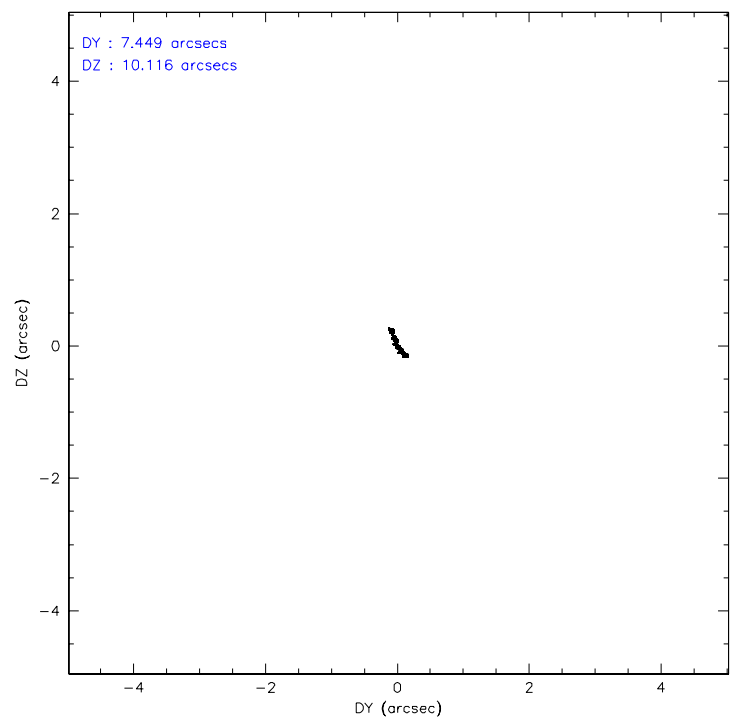
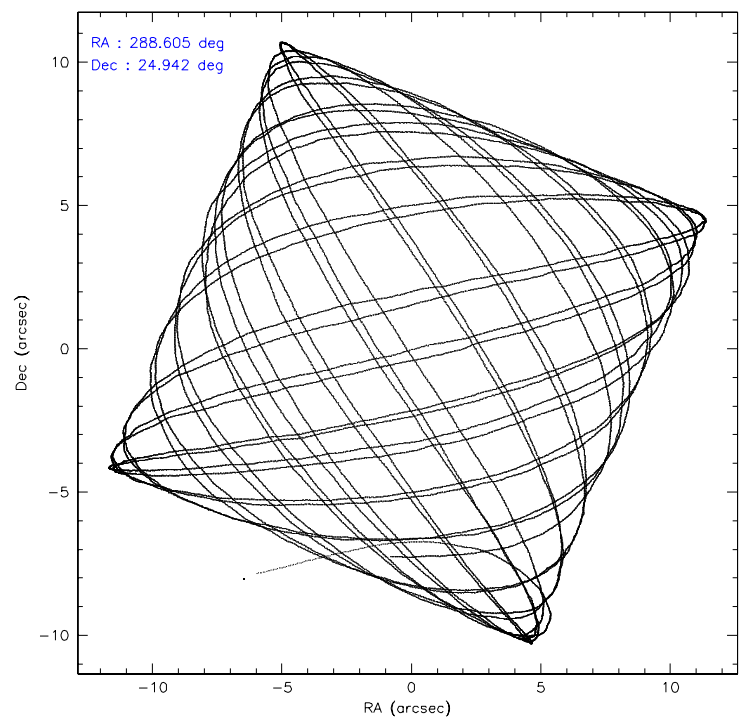
	ccd 2	ccd 3	ccd 5	ccd 6	ccd 7	ccd 8
level 1 events	26080	26577	133301	26458	87623	52818
rejected events	7104	6976	20019	7084	18531	11390
rejected %	27%	26%	15%	26%	21%	21%

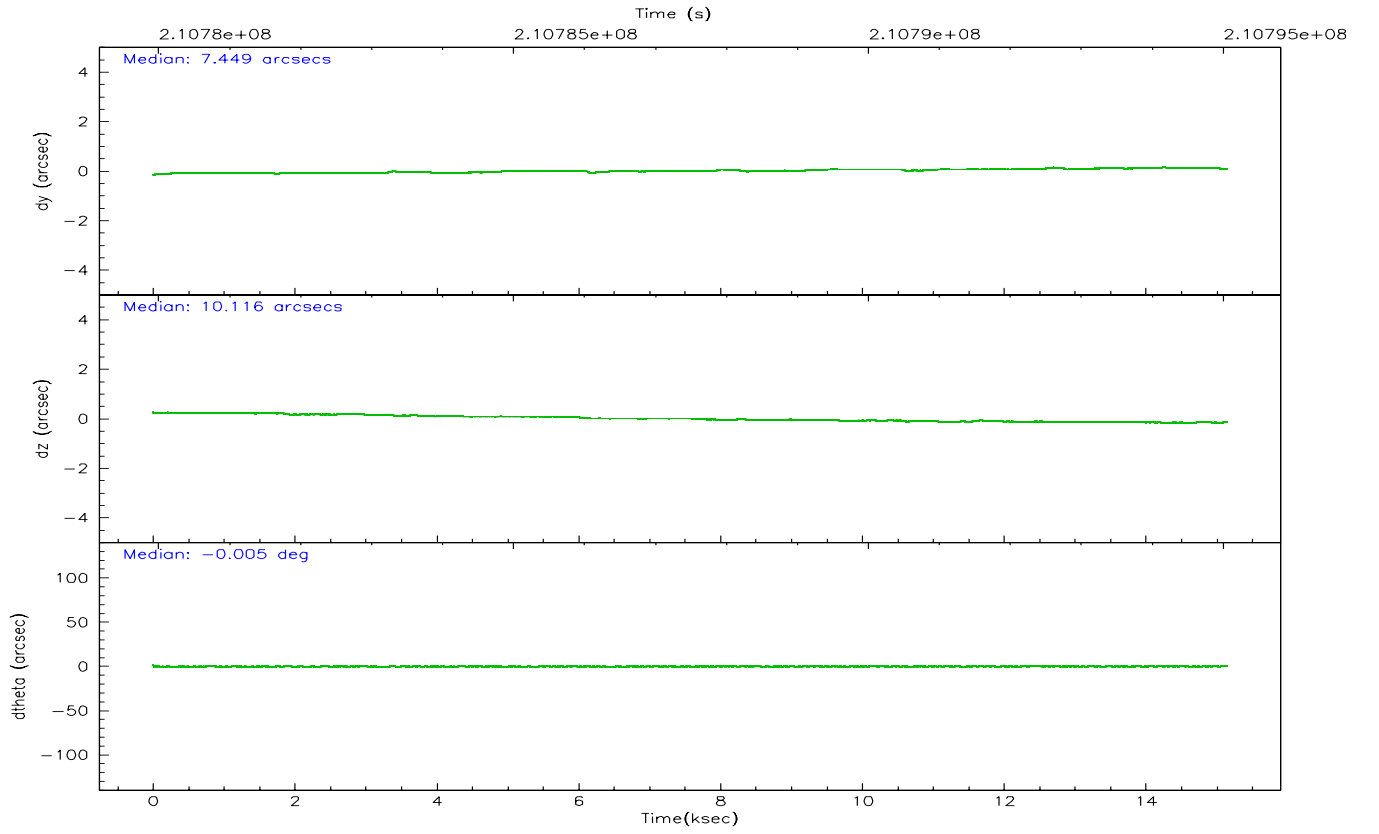
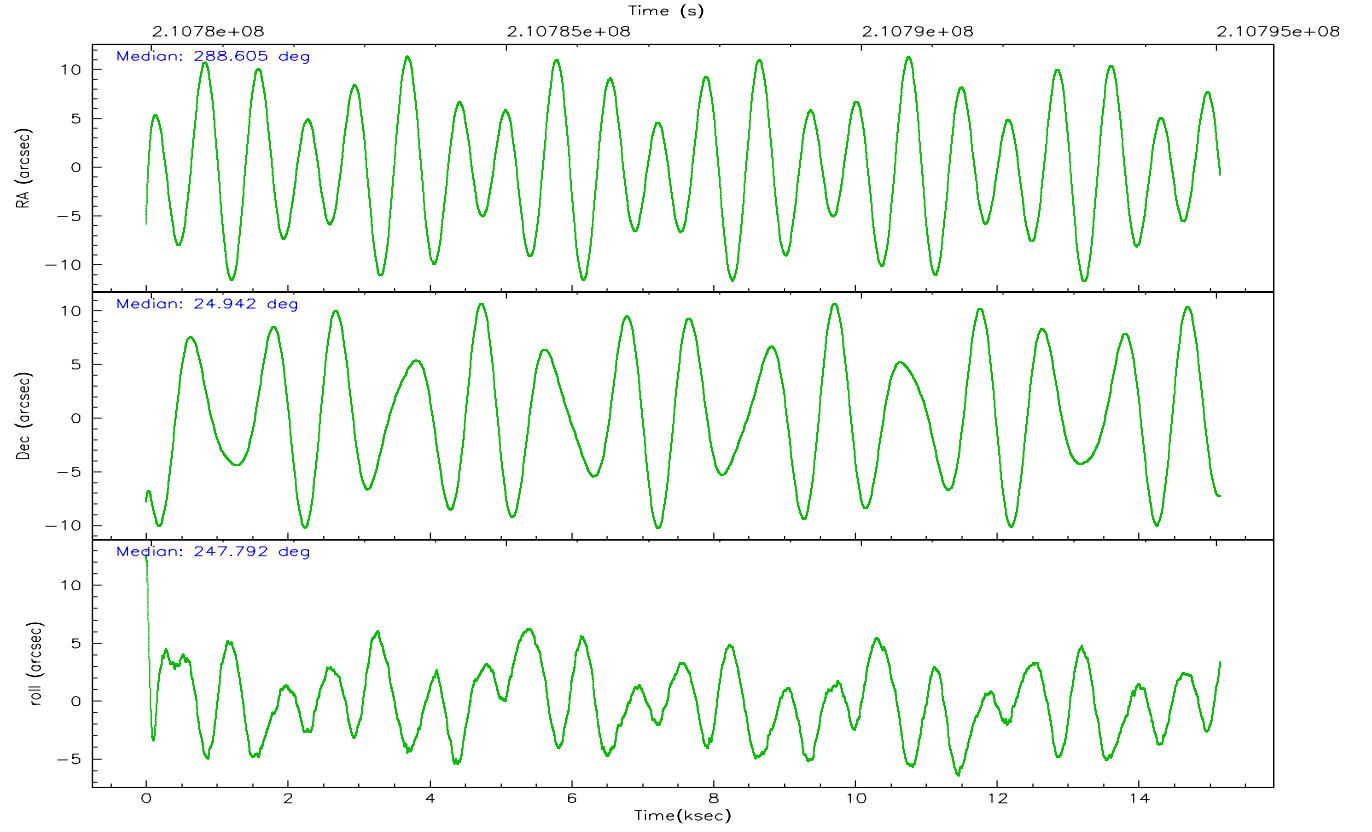
	ccd 2	ccd 3	ccd 5	ccd 6	ccd 7	ccd 8
grade 0 events	2745	2464	33315	2240	5847	8228
	10%	9%	24%	8%	6%	15%
grade 1 events	188	87	124	64	140	146
	0%	0%	0%	0%	0%	0%
grade 2 events	8217	8533	32556	8200	19929	14457
	31%	32%	24%	30%	22%	27%
grade 3 events	2626	2971	1912	2698	3397	5136
	10%	11%	1%	10%	3%	9%
grade 4 events	2576	2624	1828	2586	3280	5021
	9%	9%	1%	9%	3%	9%
grade 5 events	4873	4763	9925	5160	12295	7264
	18%	17%	7%	19%	14%	13%
grade 6 events	4855	5135	53641	5510	42735	12566
	18%	19%	40%	20%	48%	23%
grade 7 events	0	0	0	0	0	0
	0%	0%	0%	0%	0%	0%

## 2.2 Compared Parameters

Parameter	Planned	Actual	Parameter	Planned	Actual
Instrument	ACIS	ACIS	Obspar format version number	6	6
Detector	ACIS-235678	ACIS-235678	Obspar file type	PREDICTED	ACTUAL
Grating	NONE	NONE	Obspar update status	NONE	UPDATED
Data mode	CC33_GRADED	CC33_GRADED	On-chip summing requested	N	N
Observation mode	POINTING	POINTING	Subarray requested	NONE	NONE
Pointing RA	288.600876	288.6054002715121	Alternating exposures requested	N	N
Pointing Dec	24.969278	24.94234160319017	Primary exposure time	0.000000	0
Pointing Roll	247.643774	247.7985071198025			
SIM focus pos (mm)	-0.684267	-0.6828225247311905			
SIM defocus (mm)	0	0.001444936568705701			
SIM translation stage pos (mm)	-190.132523	-190.1400660498719			
SIM translation stage offset (mm)	0	0.00754346686406393			
Observation start time	210780064.184000	210778512.73213			
Observation start date	2004-09-05T14:00:00	2004-09-05T13:35:12			
Observation end time	210795064.184000	210795829.08291			
Observation end date	2004-09-05T18:10:00	2004-09-05T18:23:49			
Read mode	CONTINUOUS	CONTINUOUS			

## 2.3 Aspect





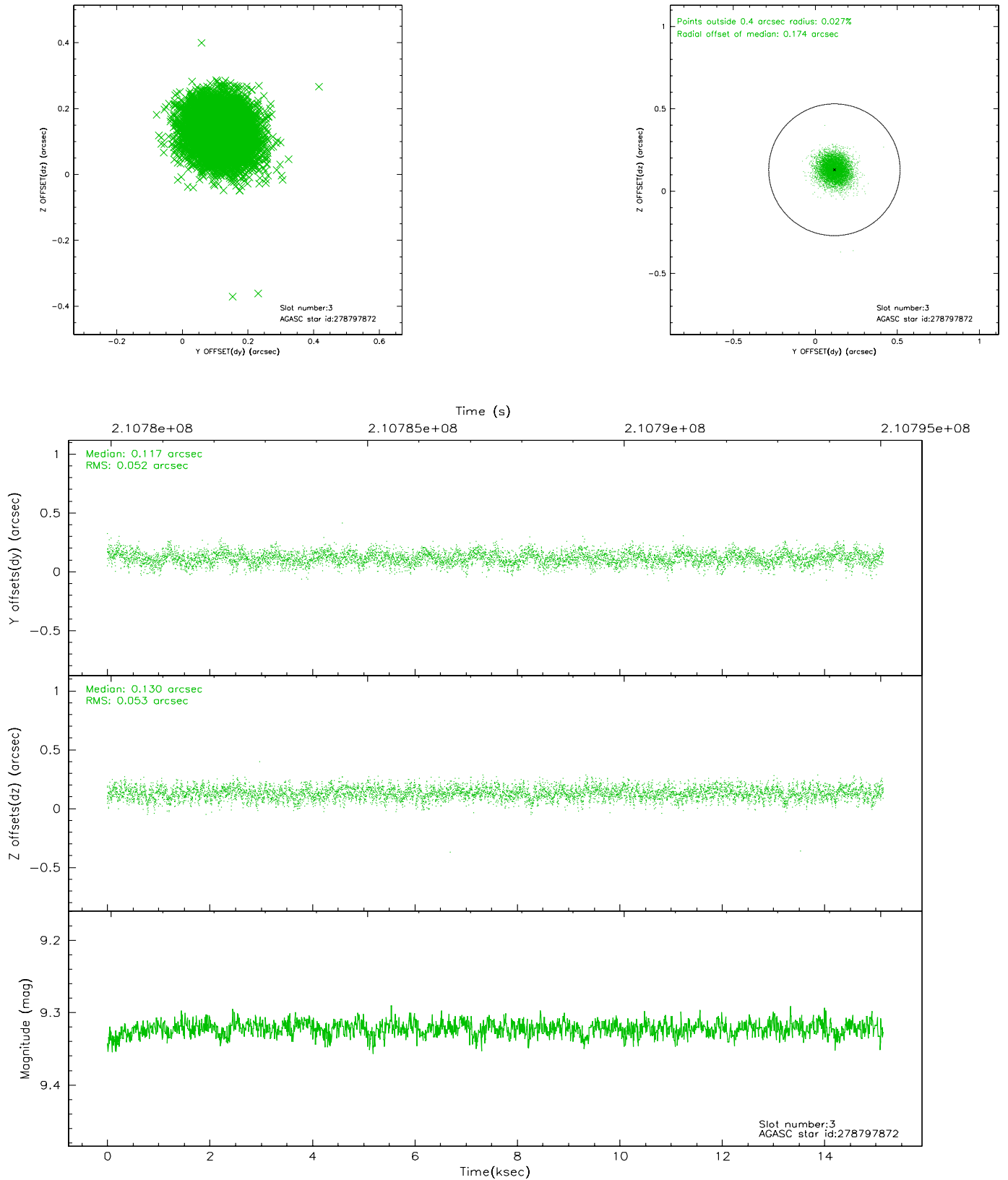
### Slot Statistics

slot	status	id	mag	n_pts	med_dy	med_dz	dr1	dr2	ra	dec	mean_y	mean_z
0	FID	ACIS-S-2	7.10	3694	-0.038	0.002	0.008	0.013	0.000000	0.000000	-760.22	-1731.40
1	FID	ACIS-S-4	7.21	3695	0.051	0.018	0.007	0.013	0.000000	0.000000	2152.96	176.86
2	FID	ACIS-S-5	7.23	3695	-0.044	-0.012	0.010	0.016	0.000000	0.000000	-1812.73	170.75
3	GUIDE	278797872	9.32	7385	0.117	0.130	0.079	0.128	288.418074	24.631395	1352.56	-90.51
4	GUIDE	278797920	7.64	7389	-0.011	0.103	0.062	0.098	288.580174	25.013203	-120.06	-122.59
5	GUIDE	278802576	9.50	7385	0.080	-0.218	0.087	0.140	288.504248	24.563340	1472.12	263.09
6	GUIDE	278806384	9.45	7382	-0.001	-0.076	0.088	0.149	288.649975	24.433815	1721.96	882.16
7	GUIDE	278954448	7.73	7388	-0.184	0.061	0.059	0.093	289.033961	24.779147	93.58	1568.73

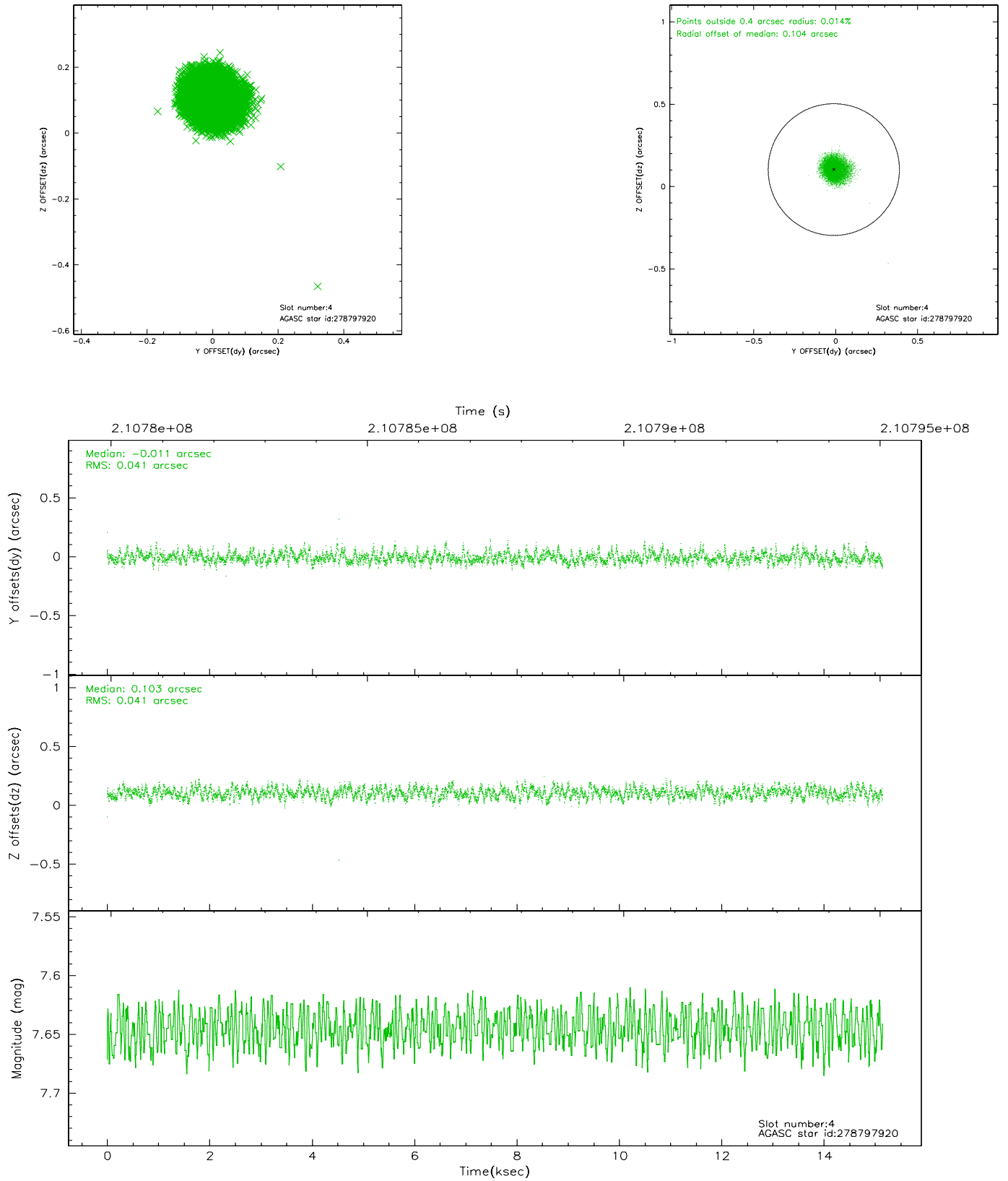


## 2.4 Star Slots

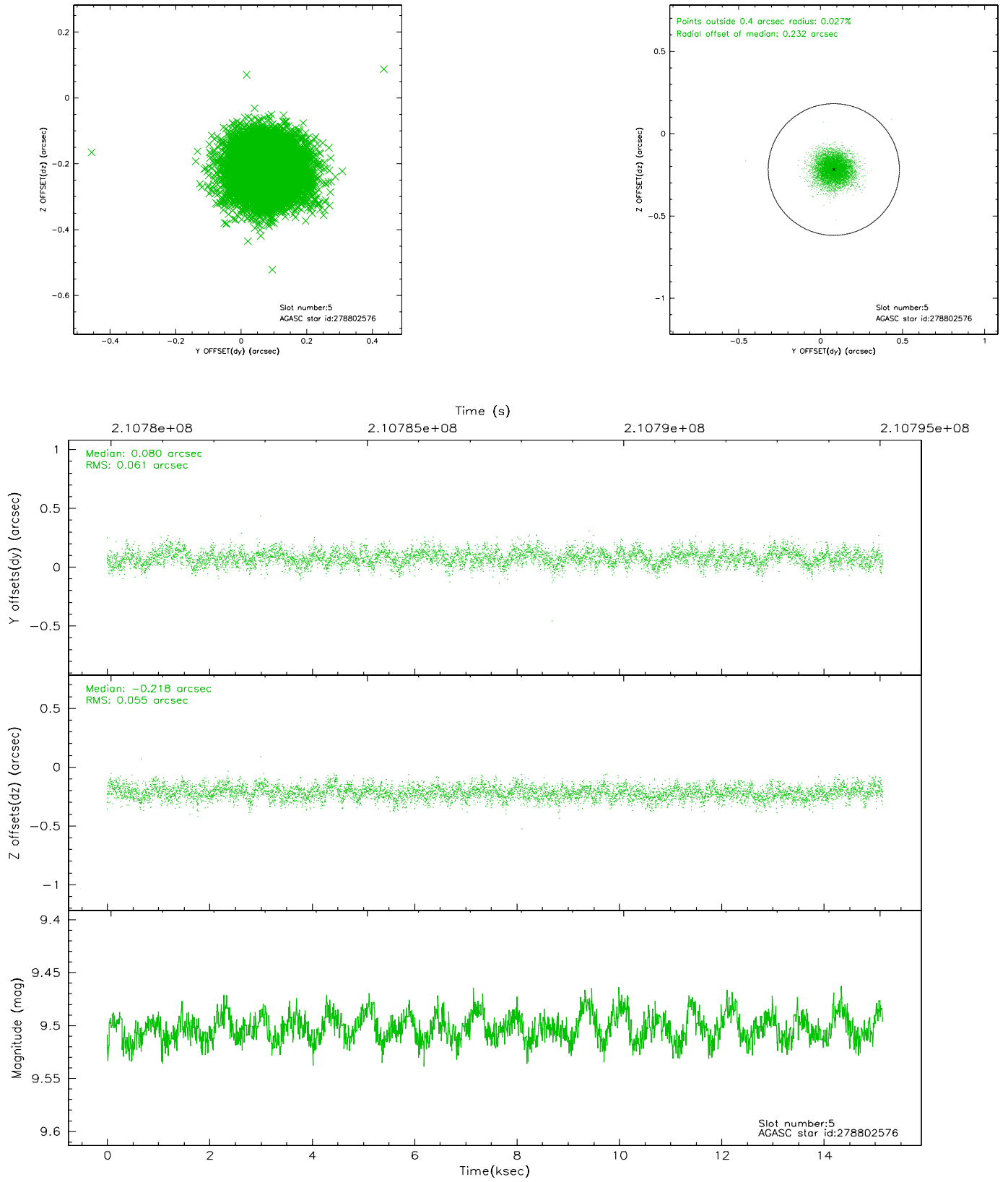
### 2.4.1 Slot 3



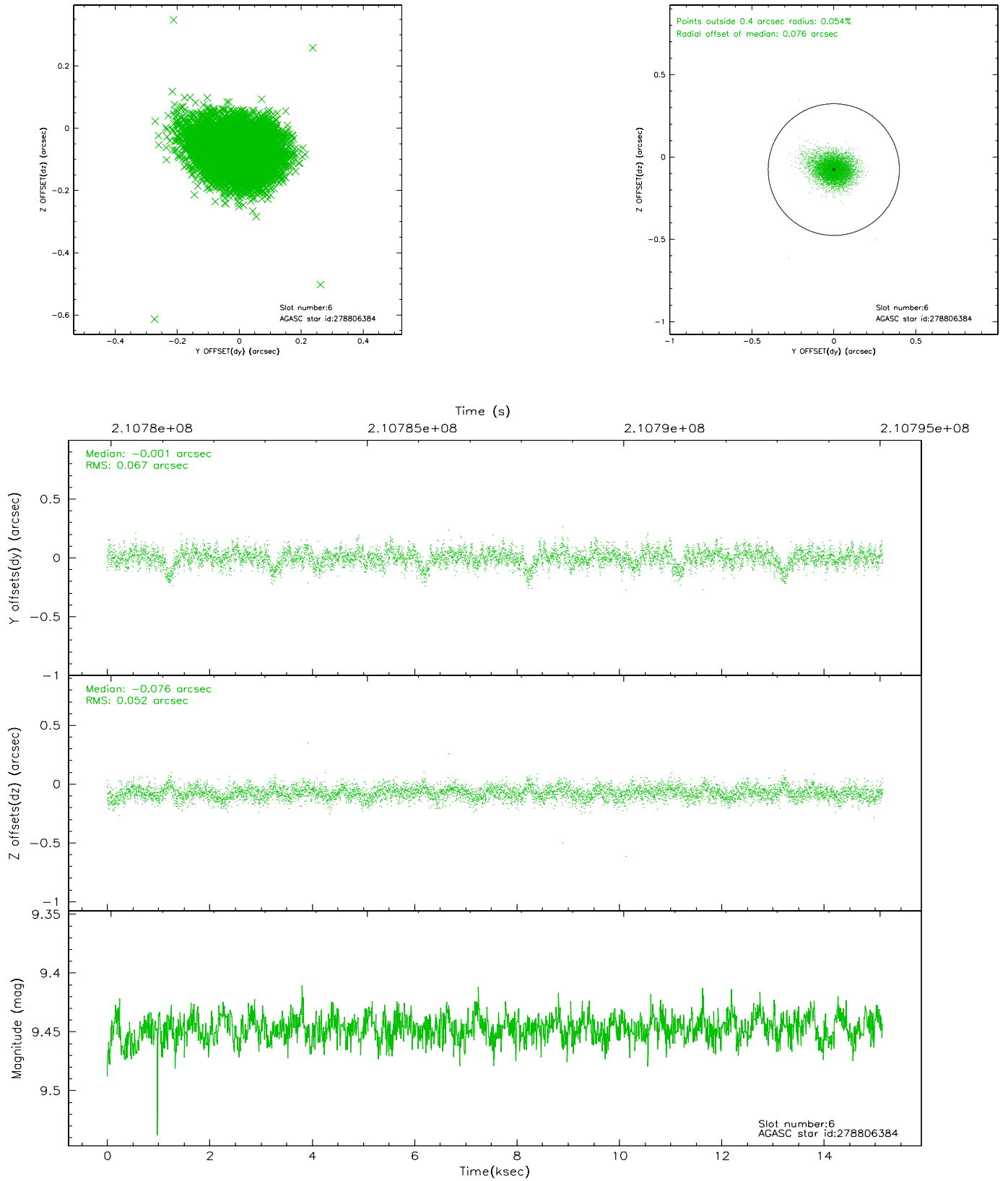
## 2.4.2 Slot 4



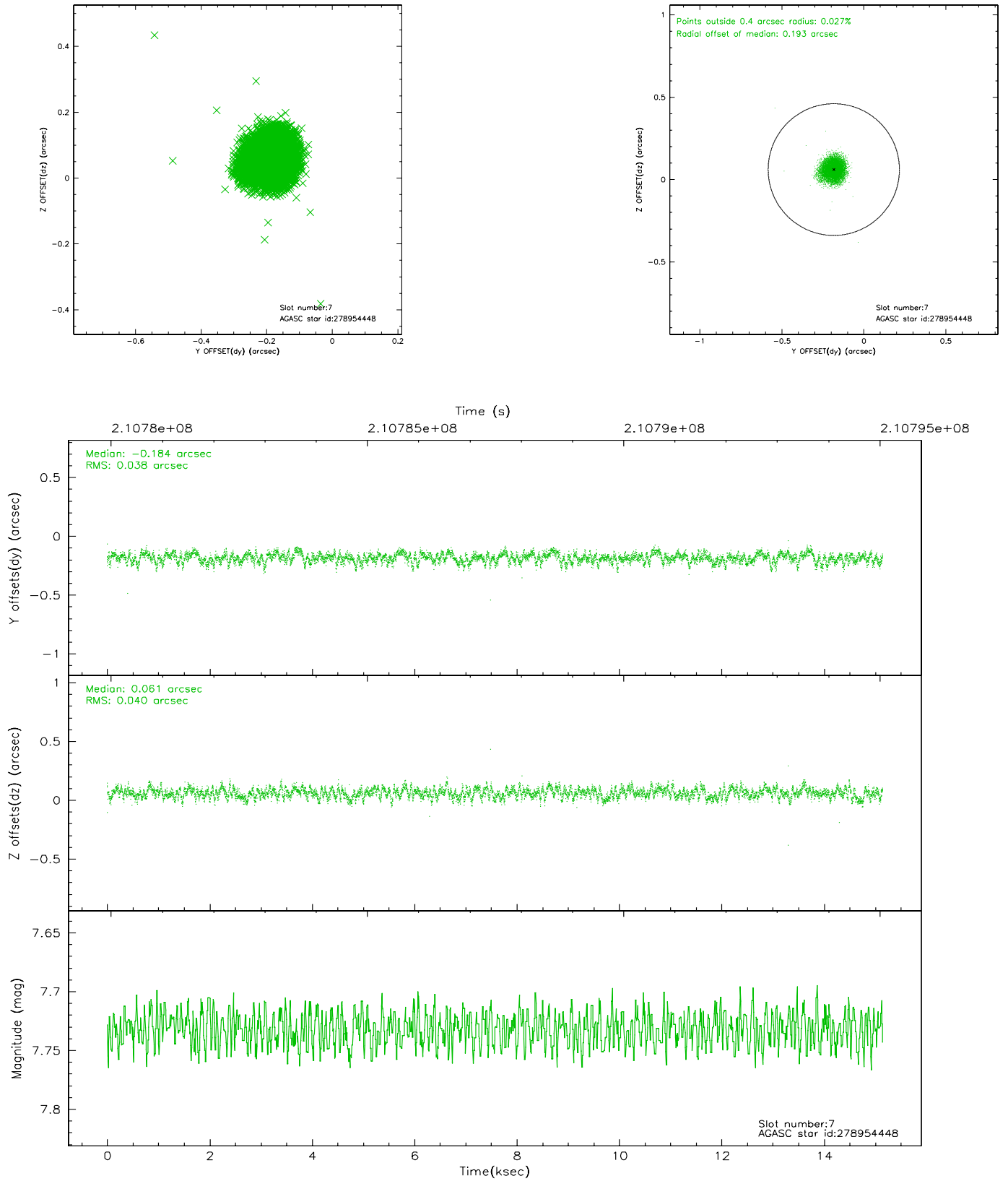
### 2.4.3 Slot 5



## 2.4.4 Slot 6

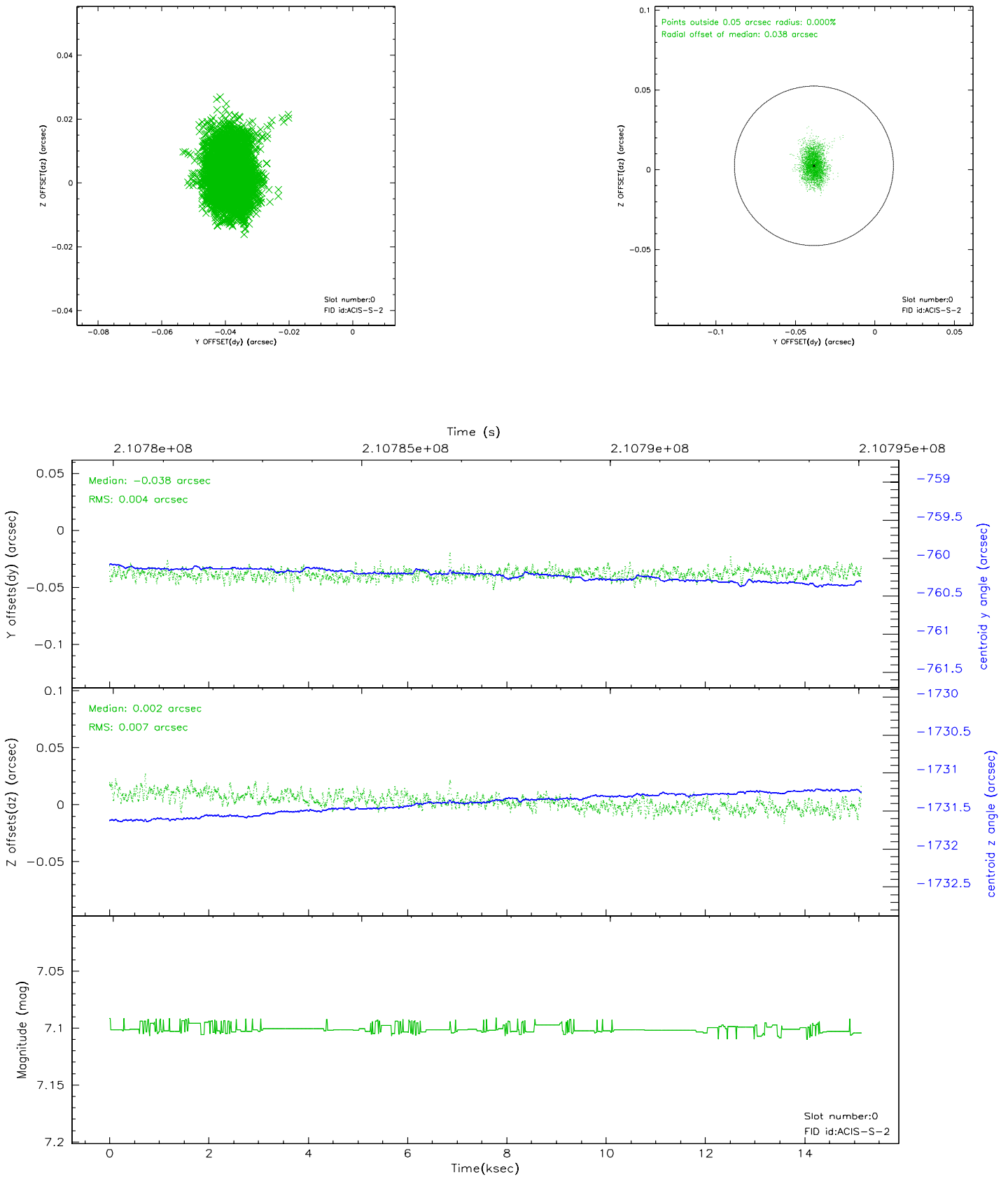


## 2.4.5 Slot 7

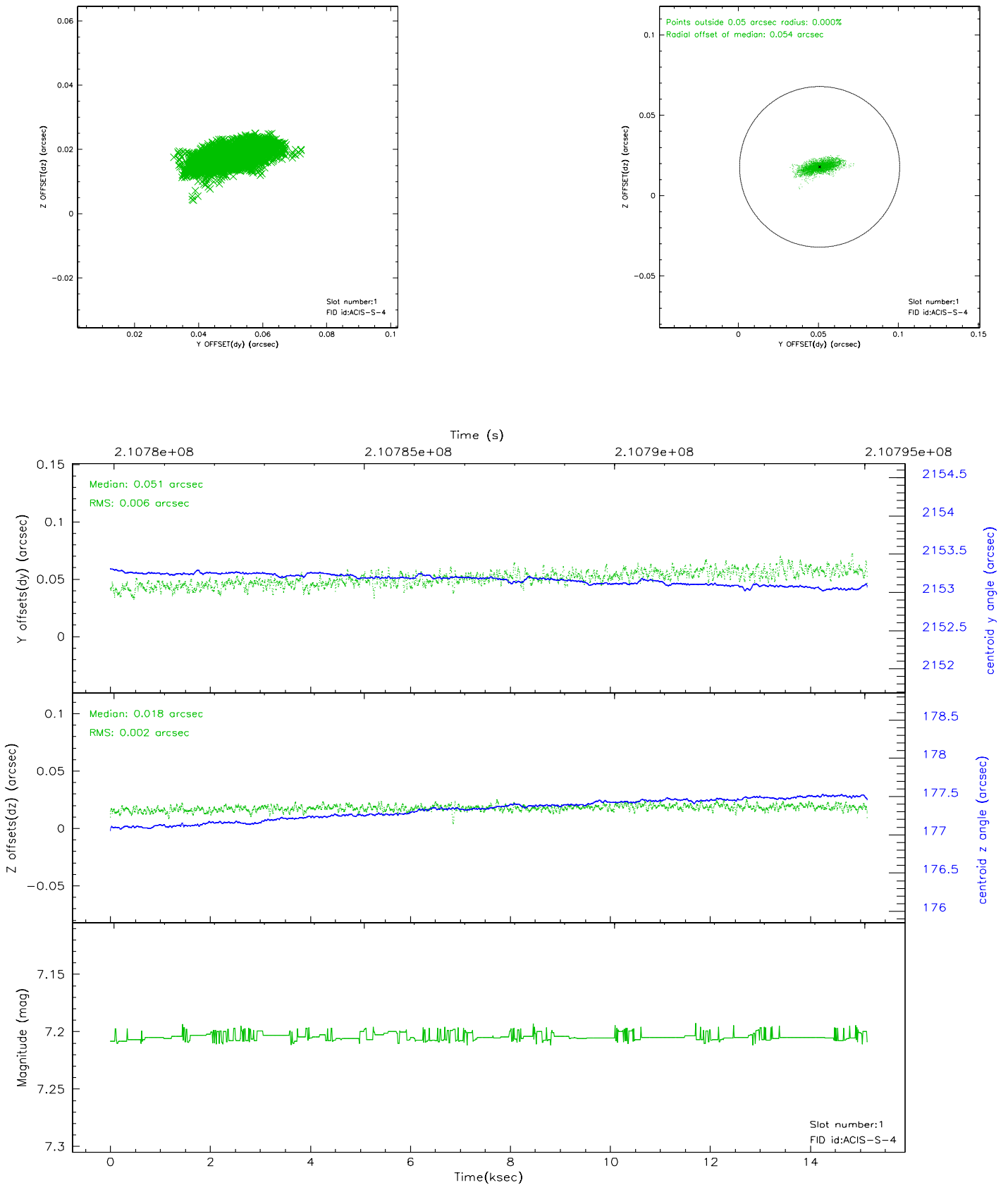


## 2.5 FID Slots

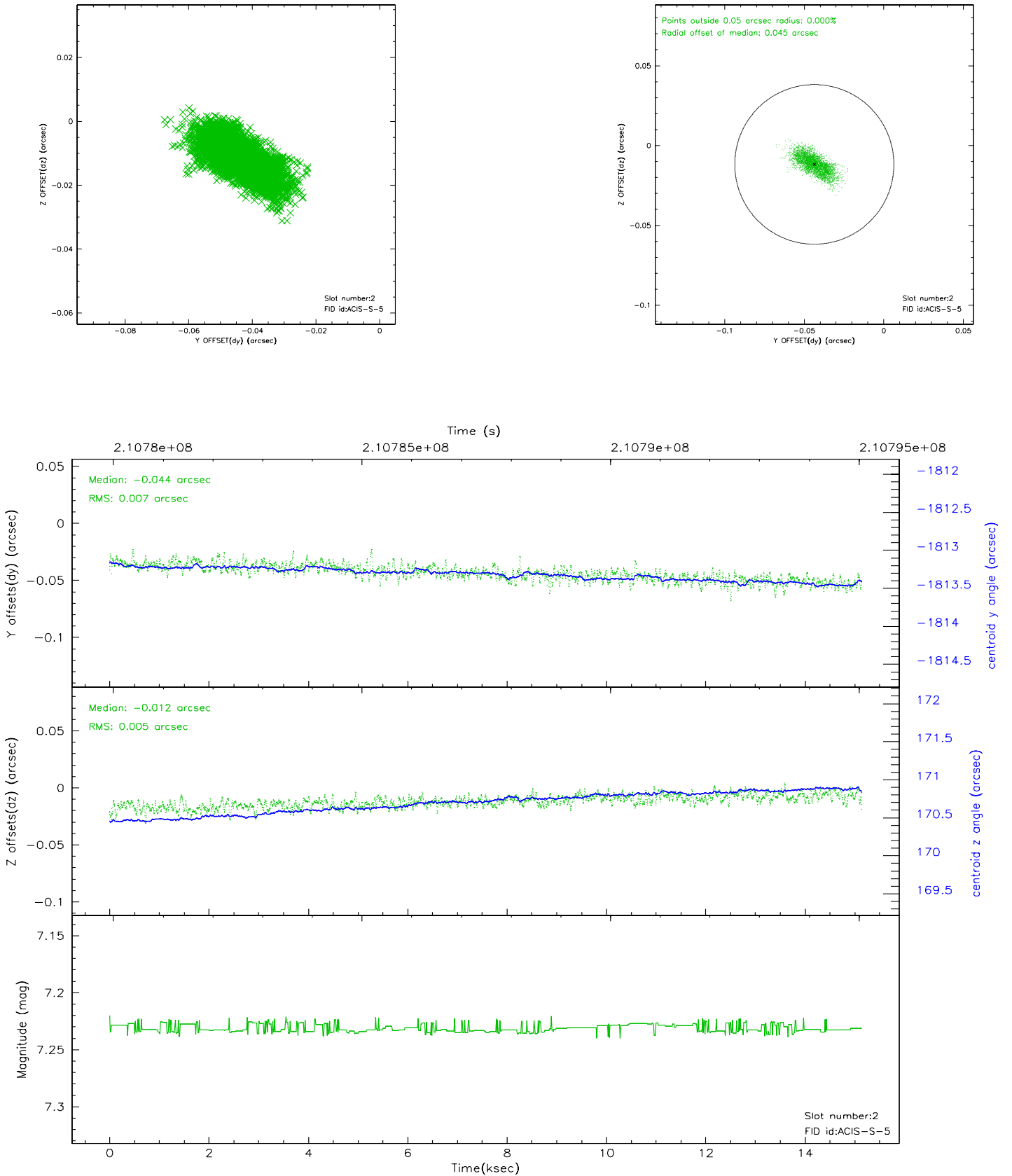
### 2.5.1 Slot 0



## 2.5.2 Slot 1



### 2.5.3 Slot 2





## A Summary

### A.1 Status

V&V Scientist	Jen Lauer
V&V Date (YYYY-MM-DD)	2008.04.15
V&V Edition	1
V&V Disposition and Status	OK
V&V Charge Time	15.148

### A.2 Comments