

V&V Reference Report

L2 ASCDS Version : 7.6.9

Observation 4361 - L2 Version 001
Chandra X-Ray Center

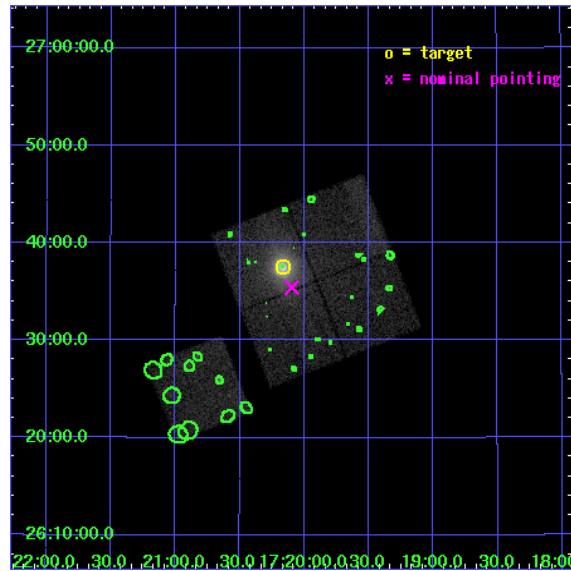
L2 Processing Date : Sep 28 2006

Contents

1	Front	2
2	OBI	3
2.1	OBI	3
2.1.1	Images	3
2.1.2	Bias	3
2.1.3	Parameters	4
2.1.4	Events	4
2.2	Compared Parameters	5
2.3	Aspect	6
2.4	Star Slots	9
2.4.1	Slot 3	9
2.4.2	Slot 4	10
2.4.3	Slot 5	11
2.4.4	Slot 6	12
2.4.5	Slot 7	13
2.5	FID Slots	14
2.5.1	Slot 0	14
2.5.2	Slot 1	15
2.5.3	Slot 2	16
3	Point Sources	17
A	Summary	18
A.1	Status	18
A.2	Comments	18

1 Front

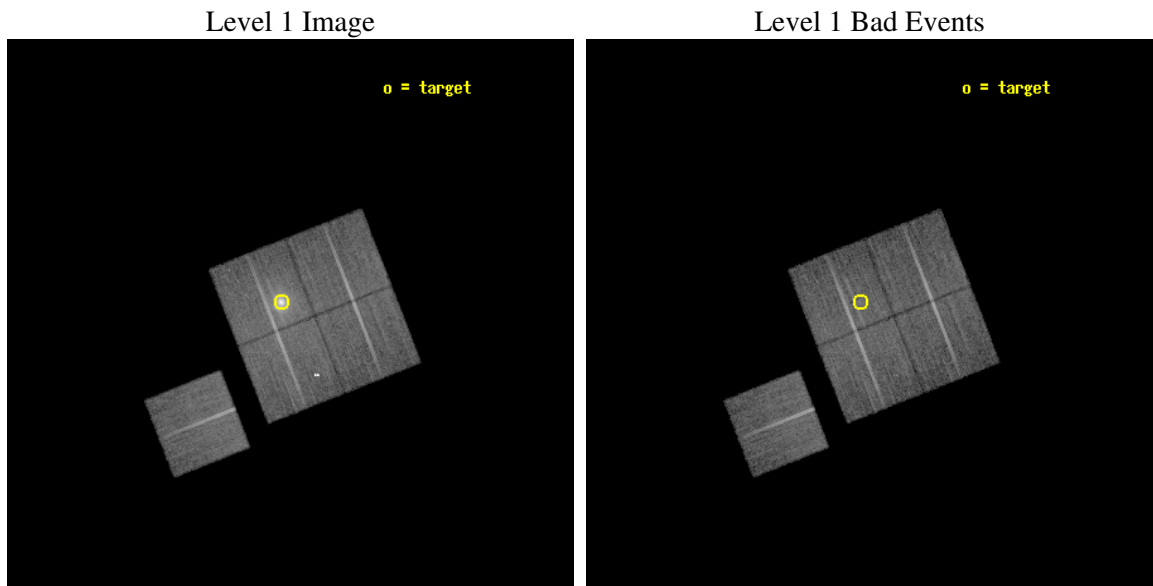
seq_num	800224
obs_id	4361
title	RXJ1720.1+2638: A NEARLY RELAXED CLUSTER WITH A FAST MOVING CORE?
observer	Dr Pasquale Mazzotta
object	RXJ1720.1+2638
dtcycle	0
cycle	P
ra_targ	260.0413
dec_targ	26.625
ra_nom	260.02392023949
dec_nom	26.590655914058
roll_nom	248.58645532824
revision	2
ontime	26008.958979785
livetime	25669.132783198
ontime0	26012.099949986
ontime1	26012.099949986
ontime2	26008.958979756
ontime3	26008.958979785
ontime6	26012.099949986
l2events	122471



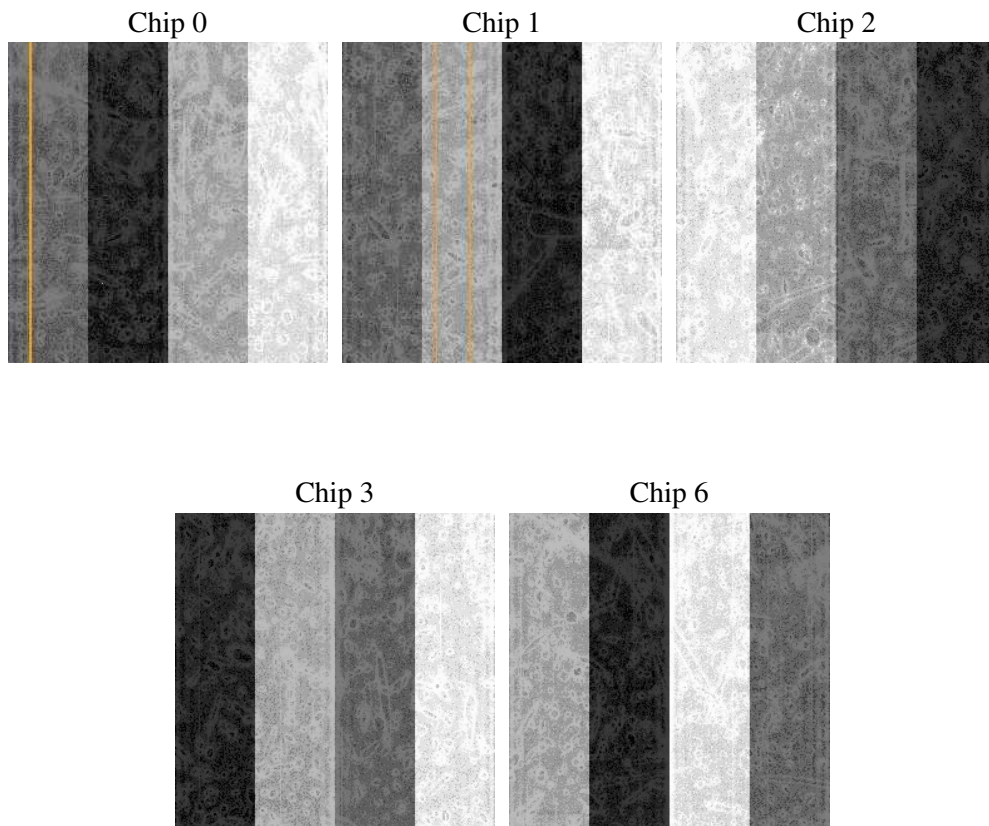
2 OBI

2.1 OBI

2.1.1 Images



2.1.2 Bias



2.1.3 Parameters

obi_num	1
ascdsver	7.6.9
caldbver	3.2.3
date	2006-09-28T17:30:57
revision	2

sched_exp_time	25889.879000
ontime	26013.767552853
ontime0	26016.908552945
ontime1	26016.908552945
ontime2	26013.767552823
ontime3	26013.767552853
ontime6	26016.908552945
l1events	708000

2.1.4 Events

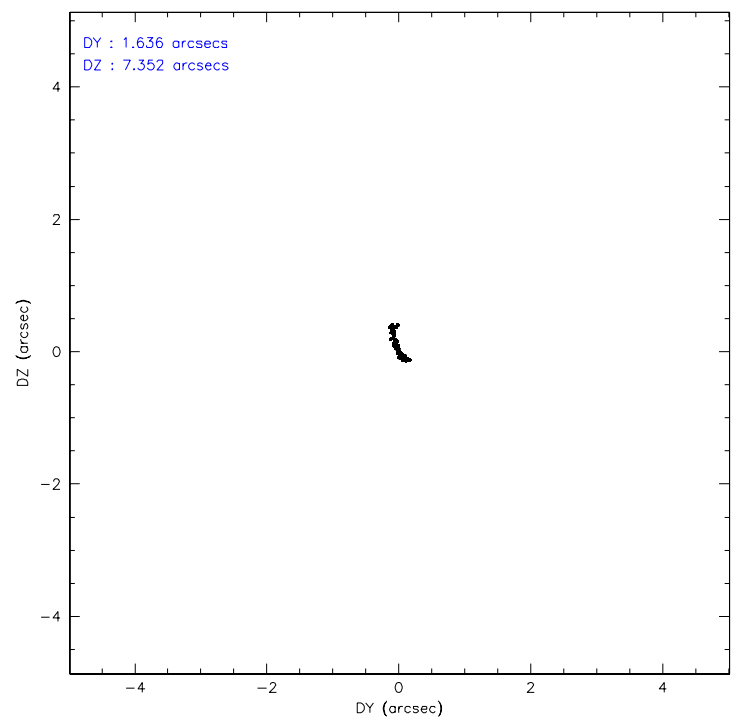
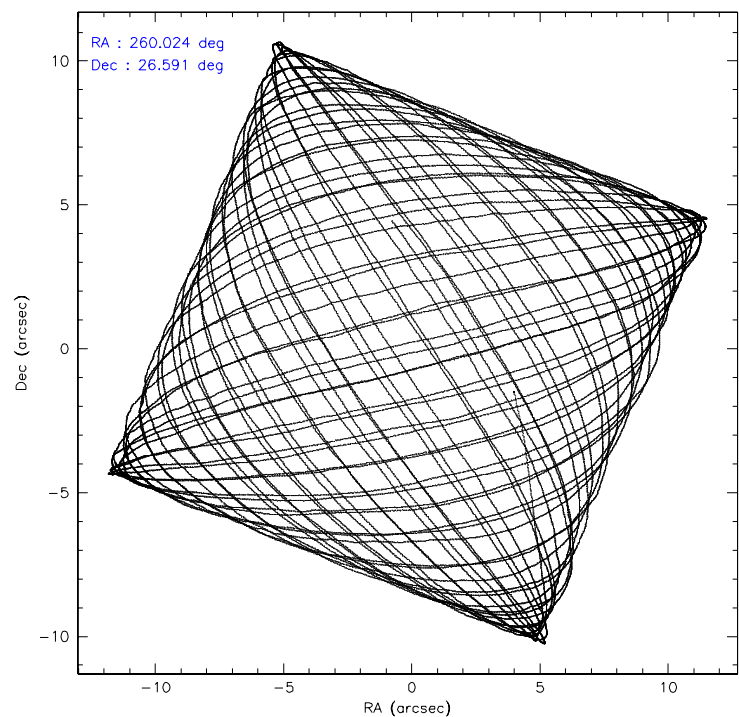
	ccd 0	ccd 1	ccd 2	ccd 3	ccd 6
level 1 events	121981	124713	147679	179143	134484
rejected events	106388	106683	121811	117211	118015
rejected %	87%	85%	82%	65%	87%

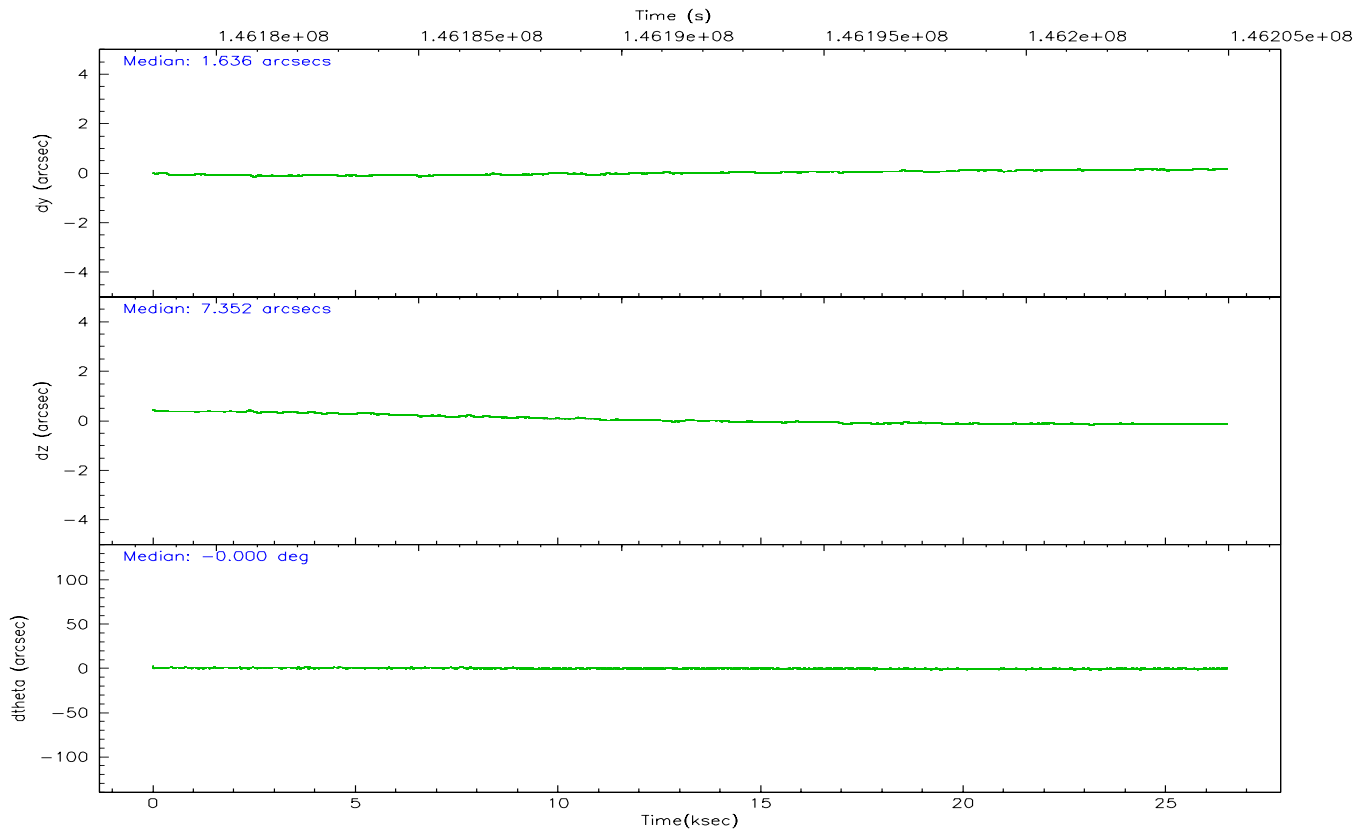
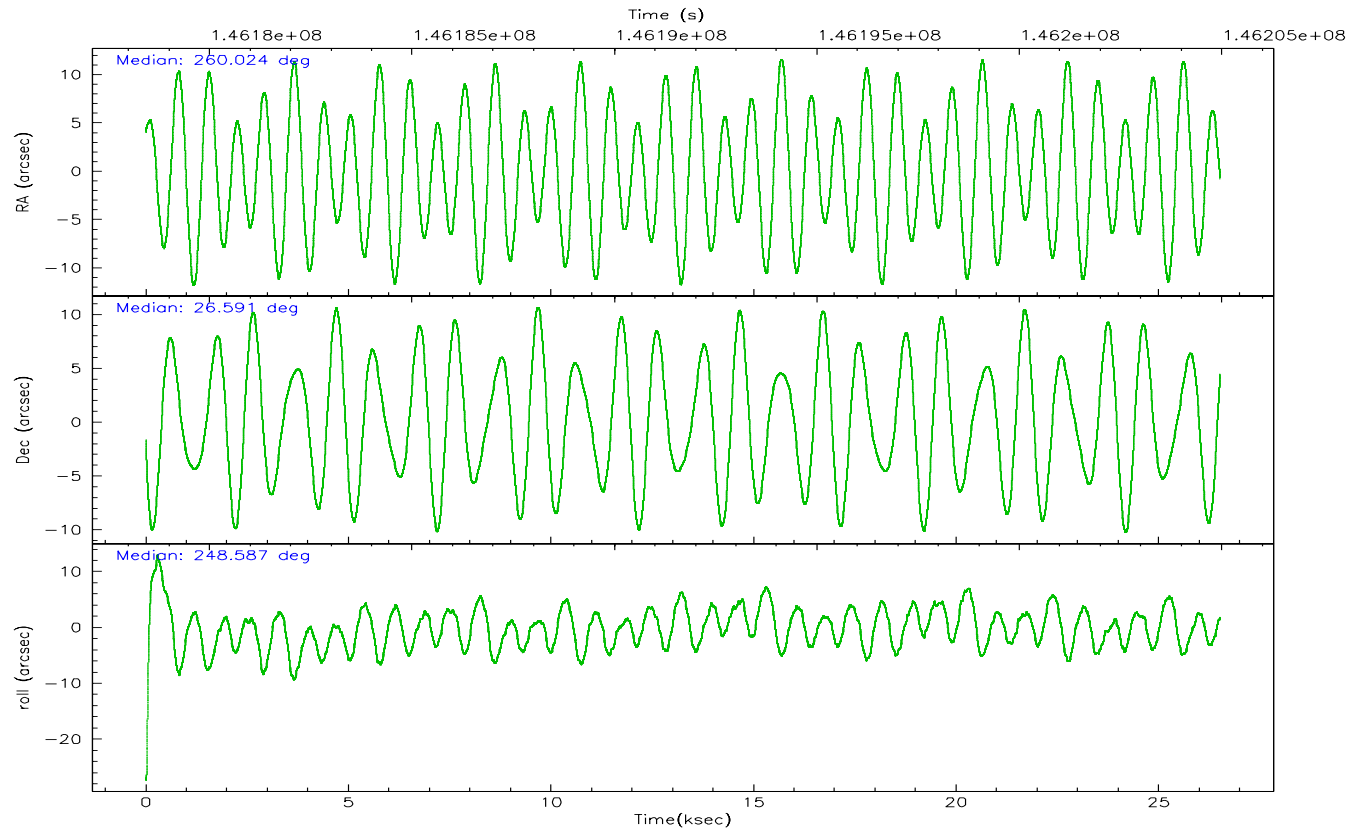
	ccd 0	ccd 1	ccd 2	ccd 3	ccd 6
grade 0 events	6441	7610	15495	45247	7139
	5%	6%	10%	25%	5%
grade 1 events	66	70	178	271	68
	0%	0%	0%	0%	0%
grade 2 events	3327	3626	4156	7300	3117
	2%	2%	2%	4%	2%
grade 3 events	1647	1824	1669	2901	1579
	1%	1%	1%	1%	1%
grade 4 events	1414	1754	1885	2860	1505
	1%	1%	1%	1%	1%
grade 5 events	4217	4530	4041	4910	4906
	3%	3%	2%	2%	3%
grade 6 events	2768	3224	2670	3639	3143
	2%	2%	1%	2%	2%
grade 7 events	102101	102075	117585	112015	113027
	83%	81%	79%	62%	84%

2.2 Compared Parameters

Parameter	Planned	Actual	Parameter	Planned	Actual
Instrument	ACIS	ACIS	Obspar format version number	6	6
Detector	ACIS-01236	ACIS-01236	Obspar file type	PREDICTED	ACTUAL
Grating	NONE	NONE	Obspar update status	NONE	UPDATED
Data mode	VFAINT	VFAINT	Number of optional ACIS chips dropped	0	0
Observation mode	POINTING	POINTING	On-chip summing requested	N	N
Pointing RA	260.019236	260.0239202394907	Subarray requested	NONE	NONE
Pointing Dec	26.617759	26.59065591405811	Alternating exposures requested	N	N
Pointing Roll	248.379878	248.5864553282391	Primary exposure time	0.000000	3.1
SIM focus pos (mm)	-0.782348	-0.7809083437167272			
SIM defocus (mm)	0	0.001439871863259334			
SIM translation stage pos (mm)	-227.592463	-227.5933067819097			
SIM translation stage offset (mm)	-6	-5.999146221020027			
Observation start time	146179062.184000	146177883.93614			
Observation start date	2002-08-19T21:16:38	2002-08-19T20:58:03			
Observation end time	146204951.184000	146205266.29977			
Observation end date	2002-08-20T04:28:07	2002-08-20T04:34:26			
Read mode	TIMED	TIMED			

2.3 Aspect



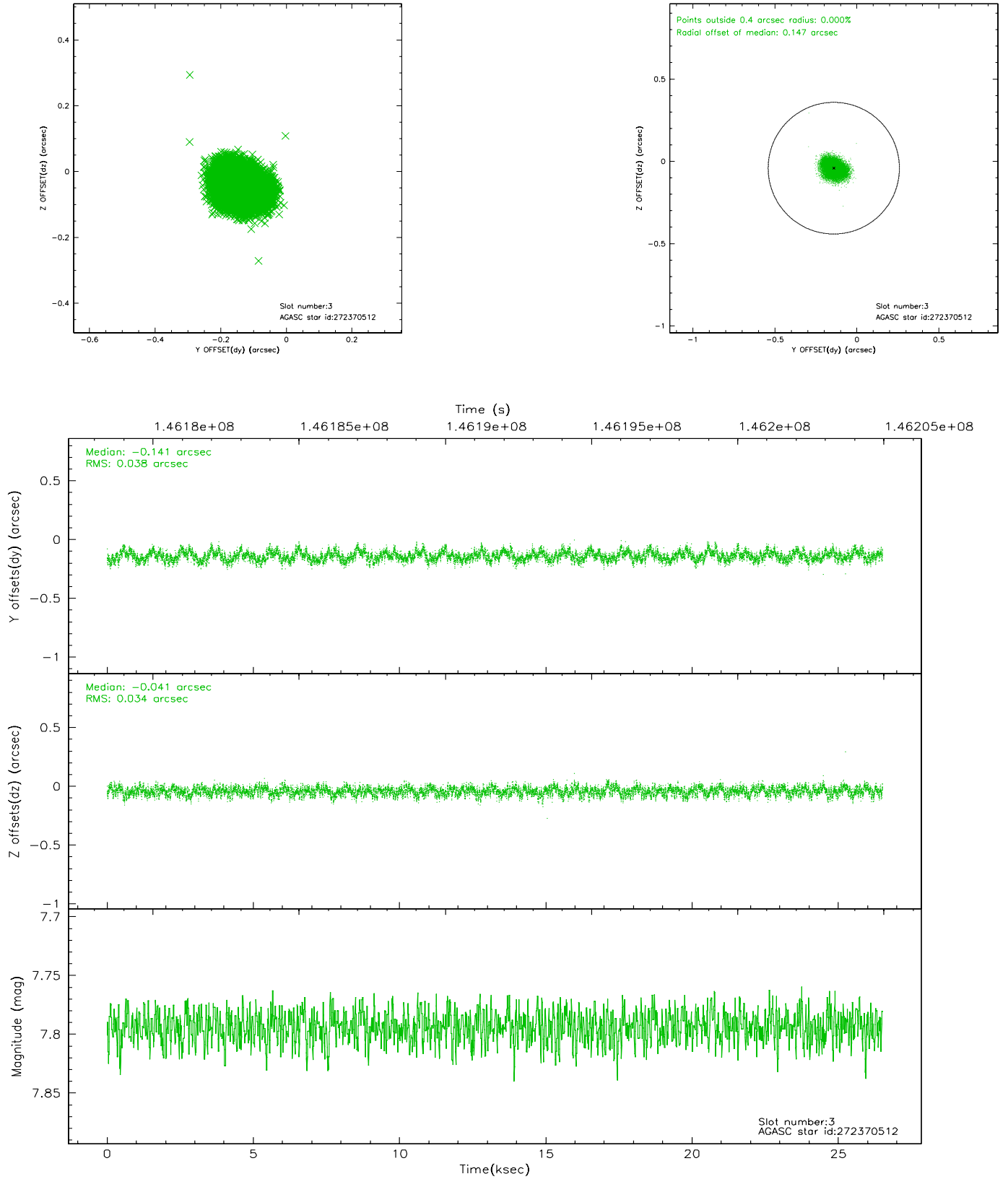


Slot Statistics

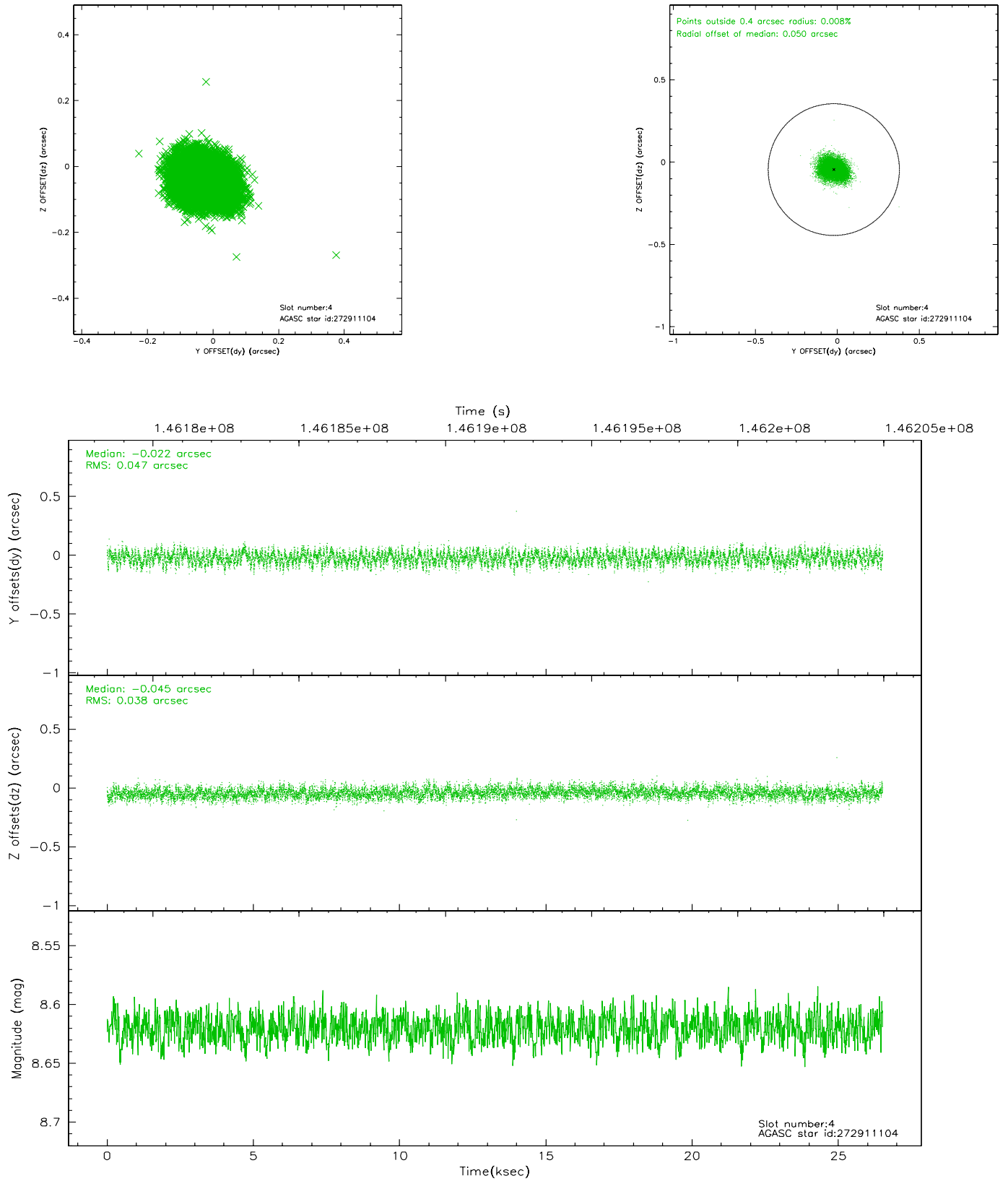
slot	status	id	mag	n_pts	med_dy	med_dz	dr1	dr2	ra	dec	mean_y	mean_z
0	FID	ACIS-I-1	7.24	6467	0.045	-0.021	0.007	0.012	0.000000	0.000000	938.09	-954.00
1	FID	ACIS-I-5	7.23	6467	-0.111	0.077	0.006	0.011	0.000000	0.000000	-1810.07	943.60
2	FID	ACIS-I-6	7.25	6467	-0.025	0.016	0.008	0.015	0.000000	0.000000	403.52	1588.10
3	GUIDE	272370512	7.79	12934	-0.141	-0.041	0.055	0.087	260.336971	25.971611	1782.46	1812.79
4	GUIDE	272911104	8.62	12929	-0.022	-0.045	0.065	0.101	260.699049	26.523786	-497.48	2158.48
5	GUIDE	272371856	9.11	12929	0.088	0.063	0.077	0.128	260.405183	26.037878	1479.33	1929.58
6	GUIDE	272905040	9.11	12929	-0.098	0.051	0.084	0.143	260.363769	26.943354	-1498.16	595.68
7	GUIDE	272370688	9.38	12927	0.176	-0.027	0.072	0.118	260.078386	26.214743	1278.55	712.38

2.4 Star Slots

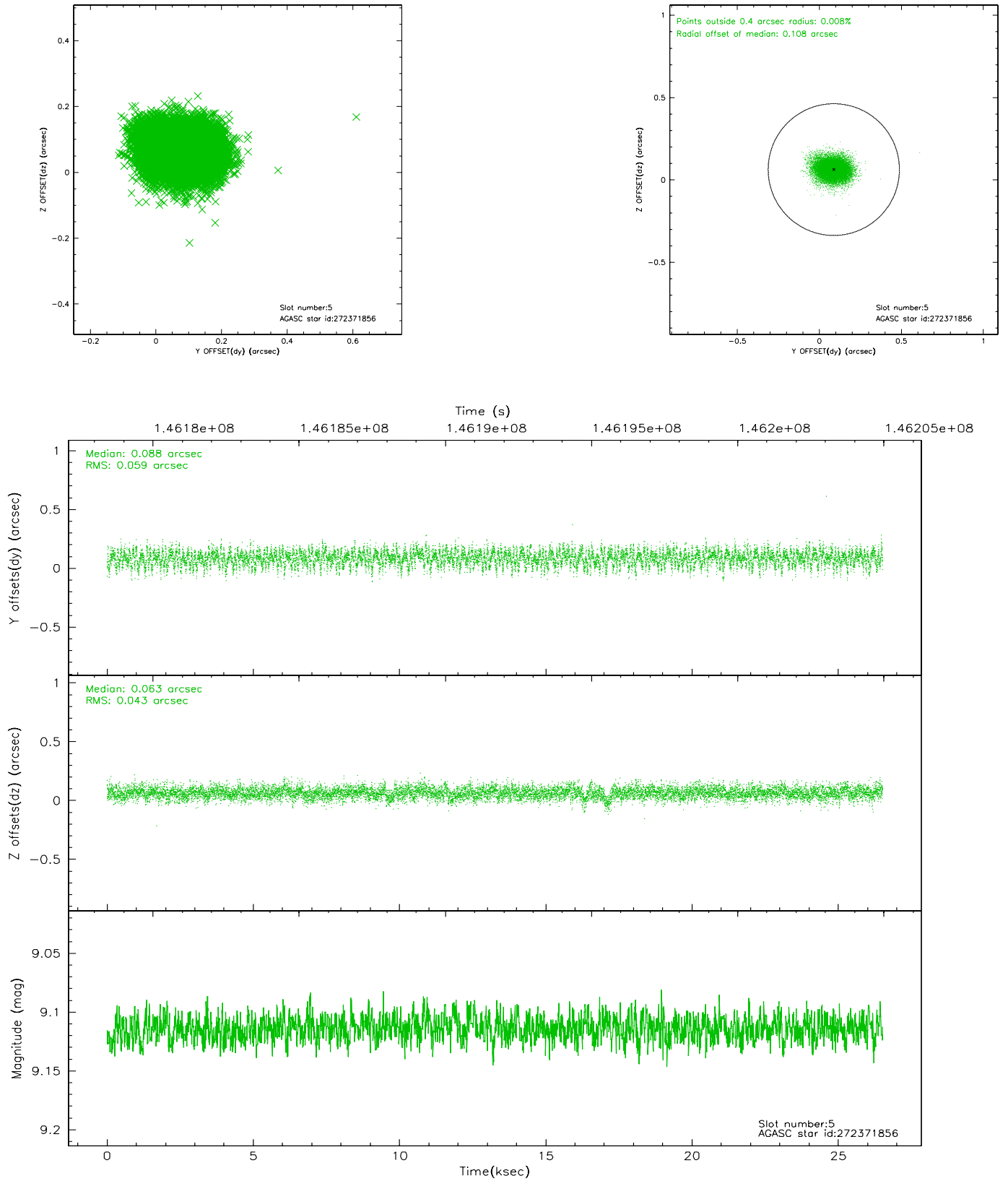
2.4.1 Slot 3



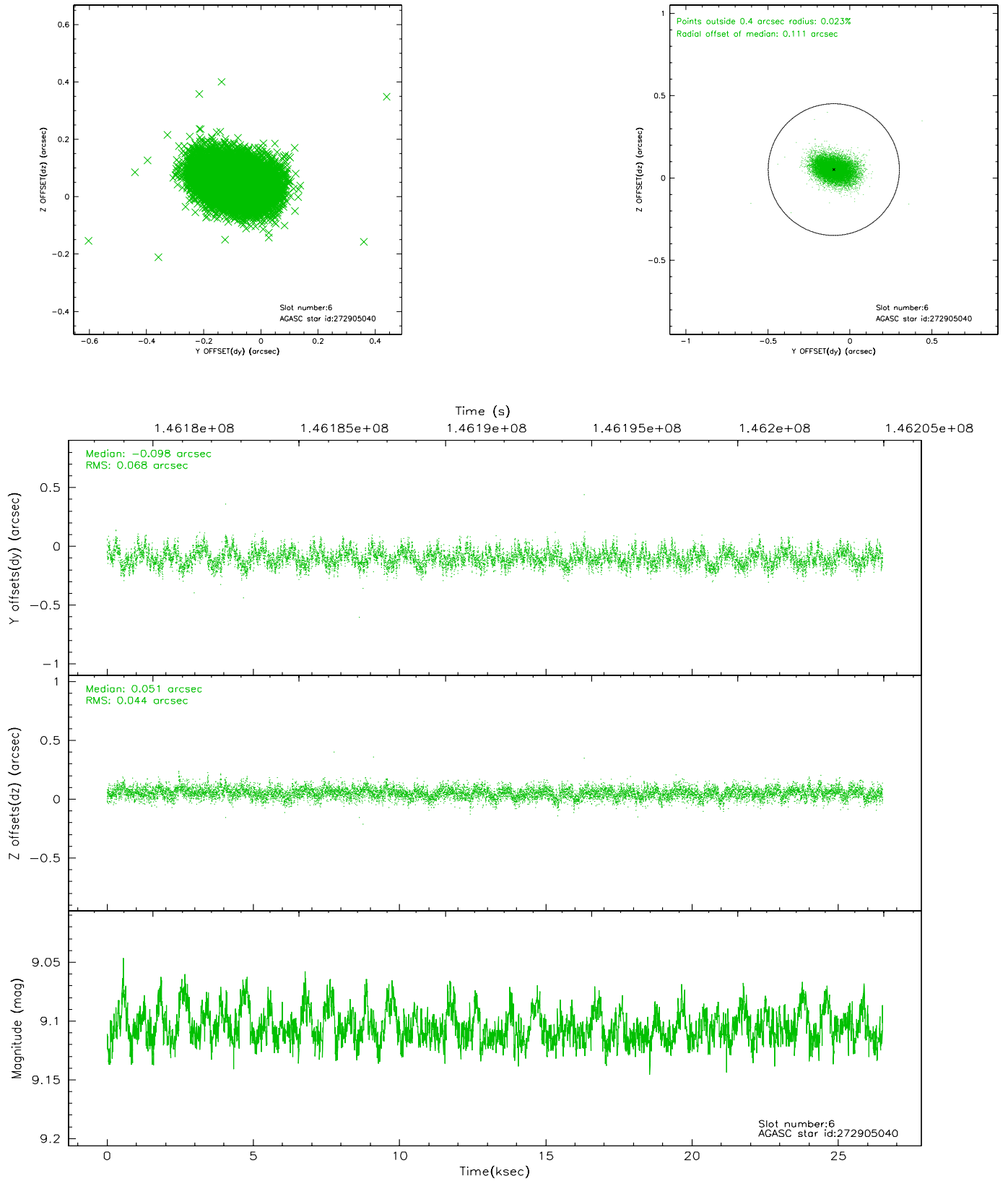
2.4.2 Slot 4



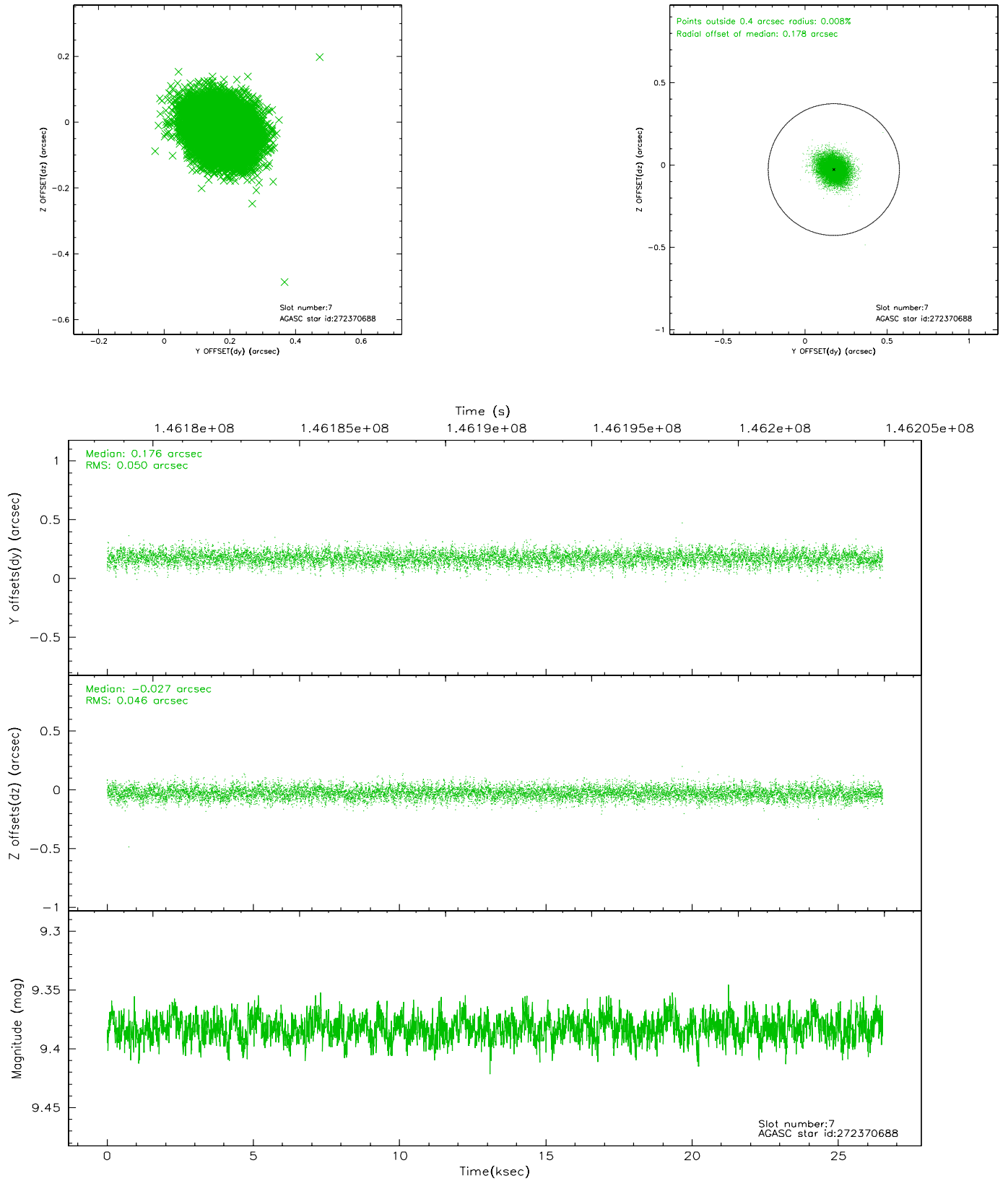
2.4.3 Slot 5



2.4.4 Slot 6

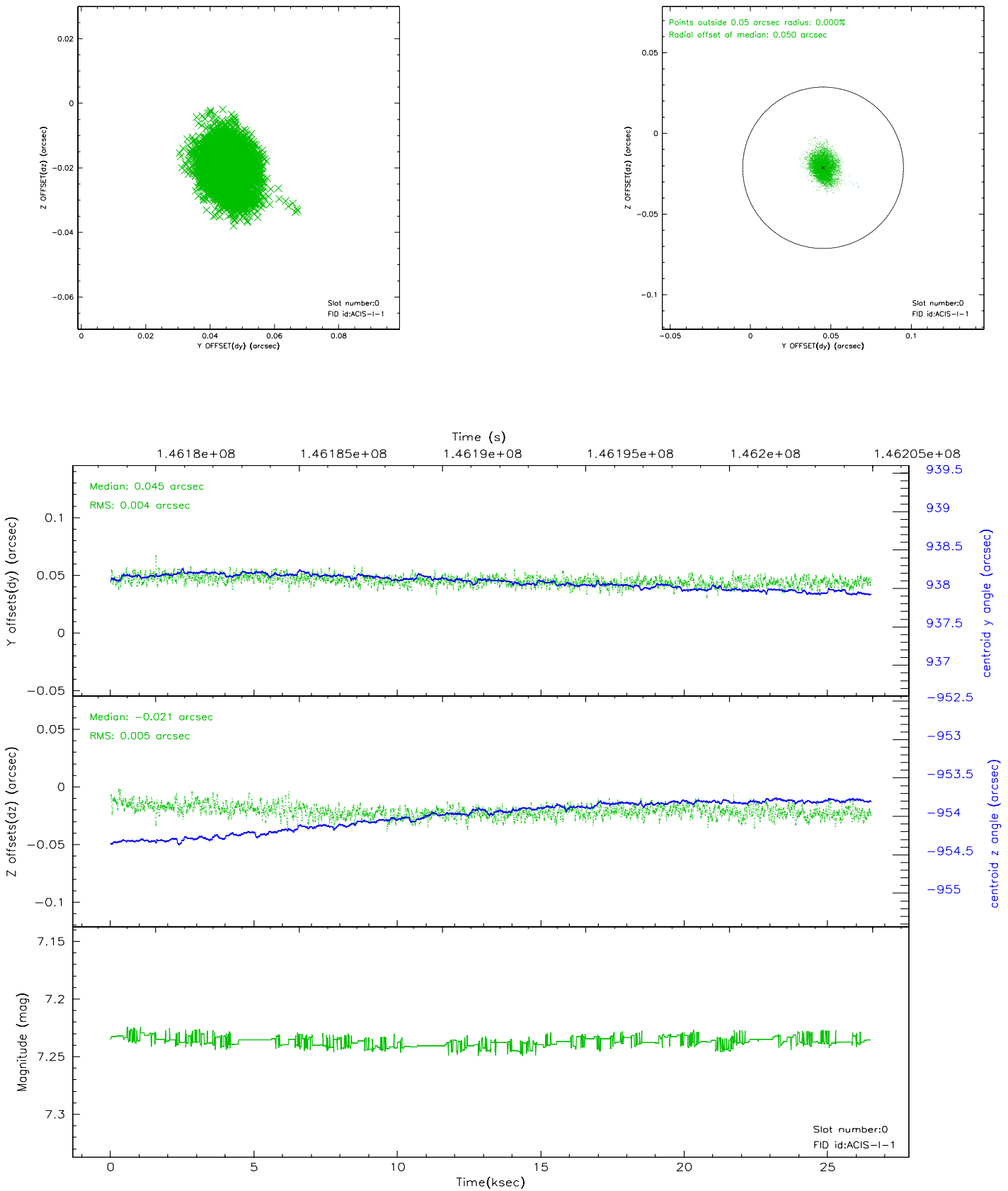


2.4.5 Slot 7

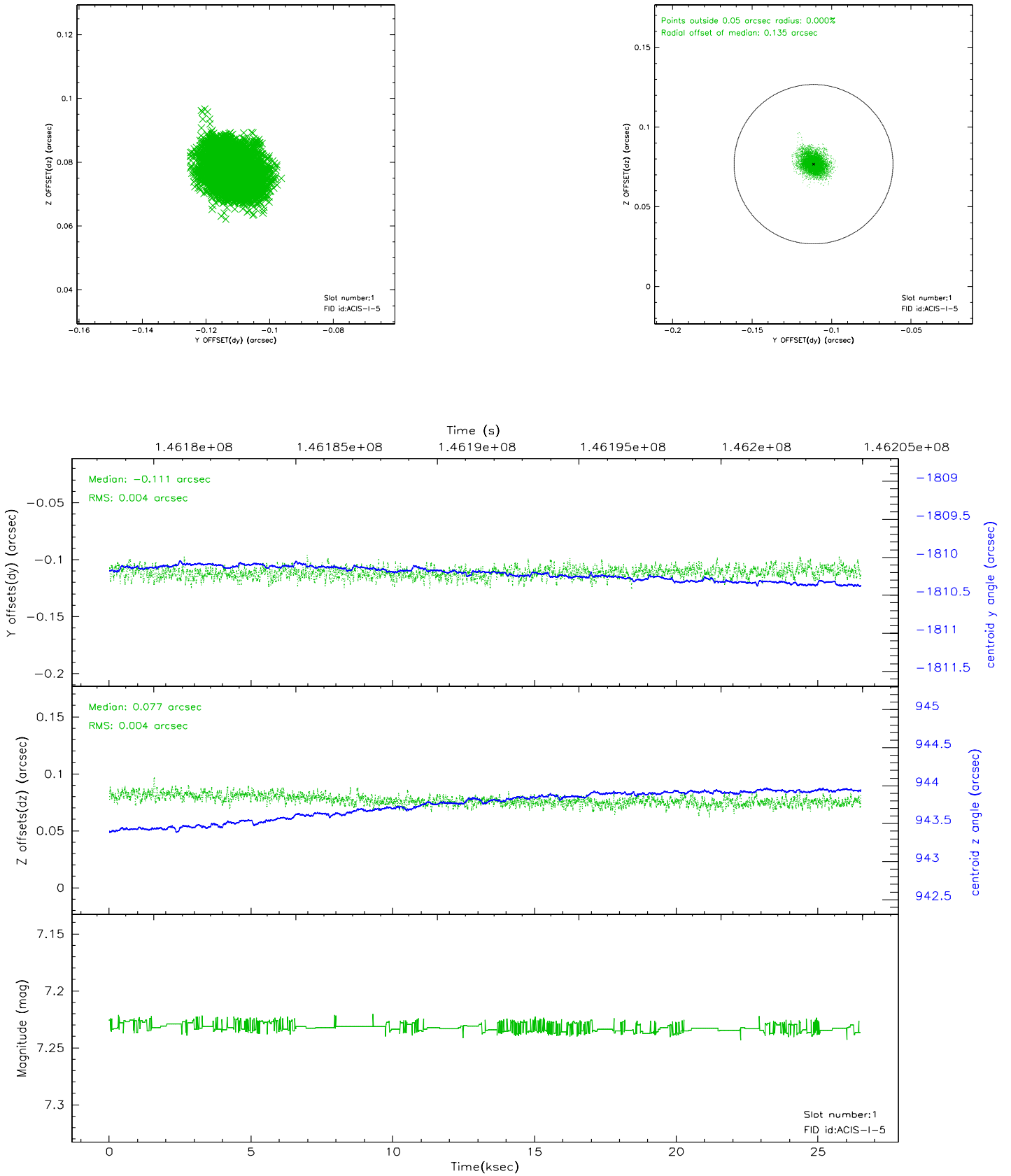


2.5 FID Slots

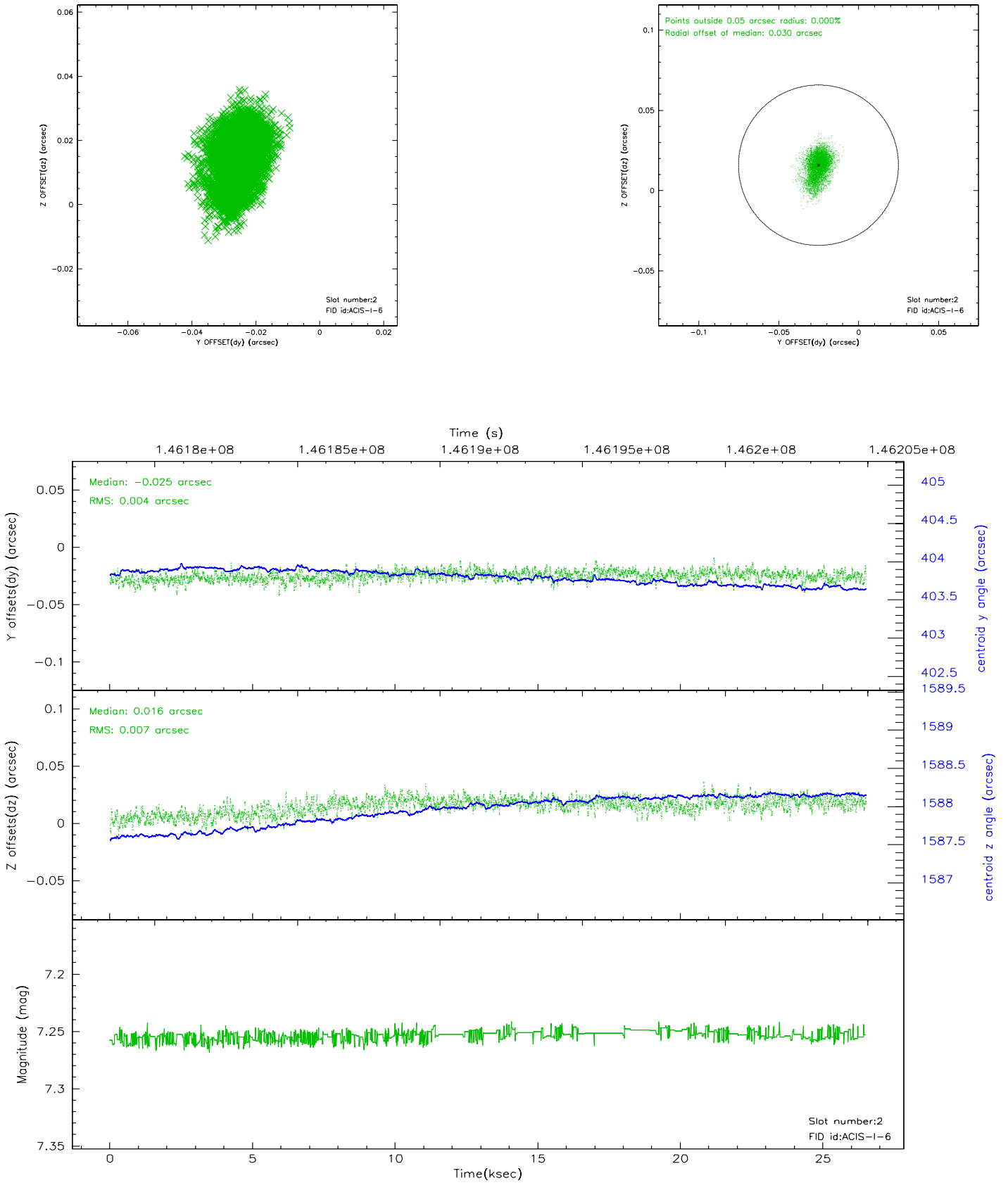
2.5.1 Slot 0



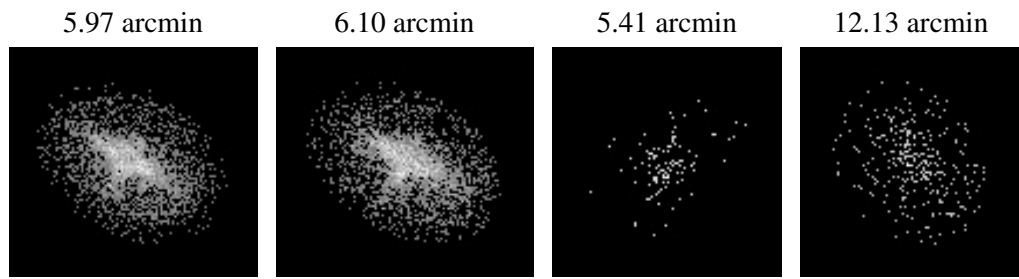
2.5.2 Slot 1



2.5.3 Slot 2



3 Point Sources



A Summary

A.1 Status

V&V Scientist	Beth Sundheim
V&V Date (YYYY-MM-DD)	2006.09.28
V&V Edition	1
V&V Disposition and Status	OK
V&V Charge Time	26.008

A.2 Comments