

V&V Reference Report

L2 ASCDS Version : 8.4.5

Observation 4281 - L2 Version 3
Chandra X-Ray Center

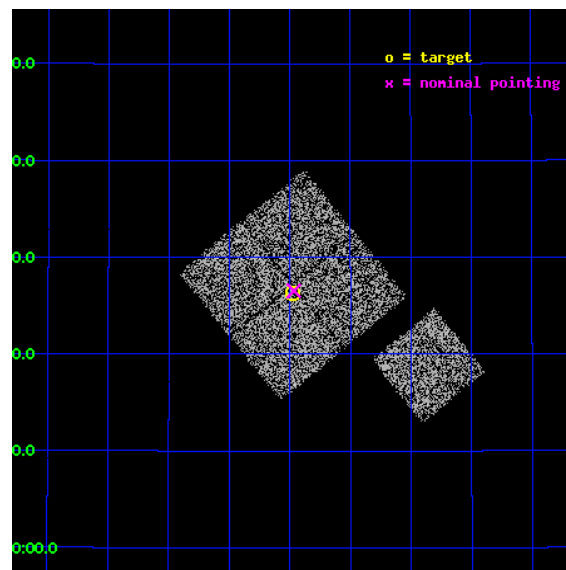
L2 Processing Date : Oct 24 2012

Contents

1	Front	2
2	OBI	3
2.1	OBI	3
2.1.1	Images	3
2.1.2	Bias	3
2.1.3	Parameters	4
2.1.4	Events	4
2.2	Compared Parameters	5
2.3	Aspect	6
2.4	Star Slots	9
2.4.1	Slot 3	9
2.4.2	Slot 4	10
2.4.3	Slot 5	11
2.4.4	Slot 6	12
2.4.5	Slot 7	13
2.5	FID Slots	14
2.5.1	Slot 0	14
2.5.2	Slot 1	15
2.5.3	Slot 2	16
A	Summary	17
A.1	Status	17
A.2	Comments	17

1 Front

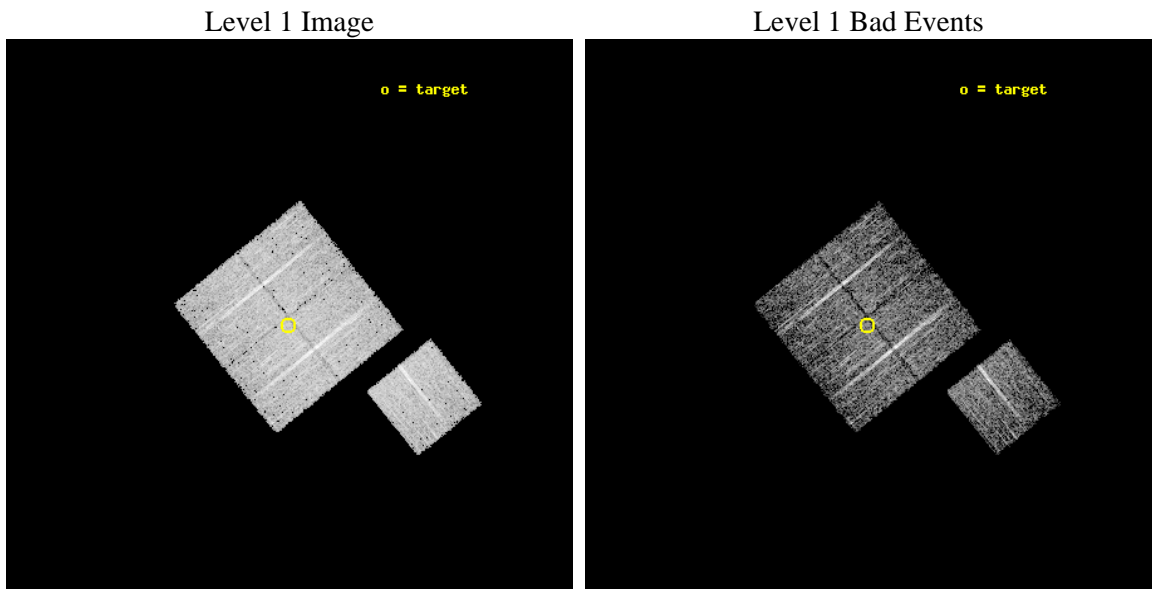
seq_num	900324	Sequence number
obs_id	4281	Observation id
title	A CHANDRA WIDE-FIELD SURVEY TO MAP THE COSMIC WEB AND INVESTIGATE THE EVOLUTION OF NUCLEAR ACCRETION	Proposal title
observer	Dr. Christine Jones	Principal investigator
object	SS59	Source name
dtcycle	0	
cycle	P	events from which exps? Prim/Second/Both
ra_targ	216.744263	Observer's specified target RA [deg]
dec_targ	32.438448	Observer's specified target Dec [deg]
ra_nom	216.74169275648	Nominal RA [deg]
dec_nom	32.442537833043	Nominal Dec [deg]
roll_nom	141.01007186328	Nominal Roll [deg]
revision	3	Processing version of data
ontime	5018.8999903202	Sum of GTIs [s]
livetime	4953.3243670863	Livetime [s]
ontime0	5018.8999903202	Sum of GTIs [s]
ontime1	5018.8999903202	Sum of GTIs [s]
ontime2	5018.8999903202	Sum of GTIs [s]
ontime3	5018.8999903202	Sum of GTIs [s]
ontime6	5018.8999903202	Sum of GTIs [s]
l2events	16200	Number of level 2 events



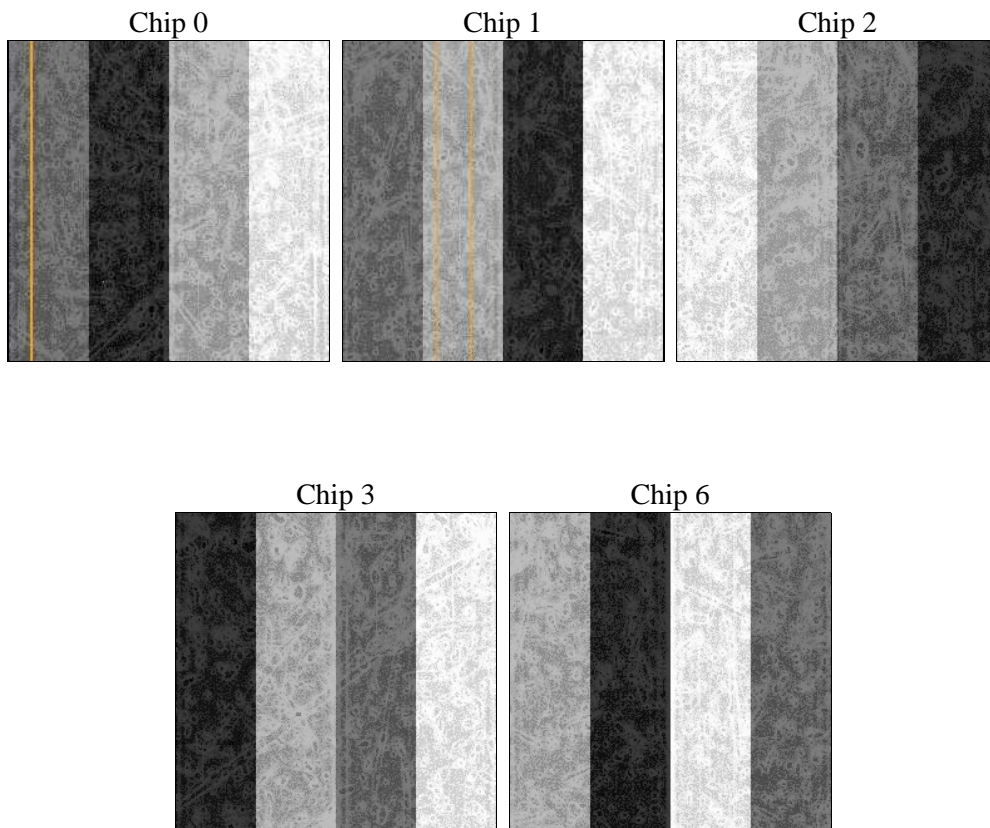
2 OBI

2.1 OBI

2.1.1 Images



2.1.2 Bias



2.1.3 Parameters

obi_num	0	Obi number	sched_exp_time	4900.000000	[s] Scheduled observation exposure time
ascdsver	8.4.5	Processing system revision	ontime	5018.8999903202	Sum of GTIs [s]
caldsver	4.5.2	 	ontime0	5018.8999903202	Sum of GTIs [s]
date	2012-10-24T21:09:11	Date and time of file creation	ontime1	5018.8999903202	Sum of GTIs [s]
revision	3	Processing version of data	ontime2	5018.8999903202	Sum of GTIs [s]
			ontime3	5018.8999903202	Sum of GTIs [s]
			ontime6	5018.8999903202	Sum of GTIs [s]
			l1events	154783	Number of level 1 events

2.1.4 Events

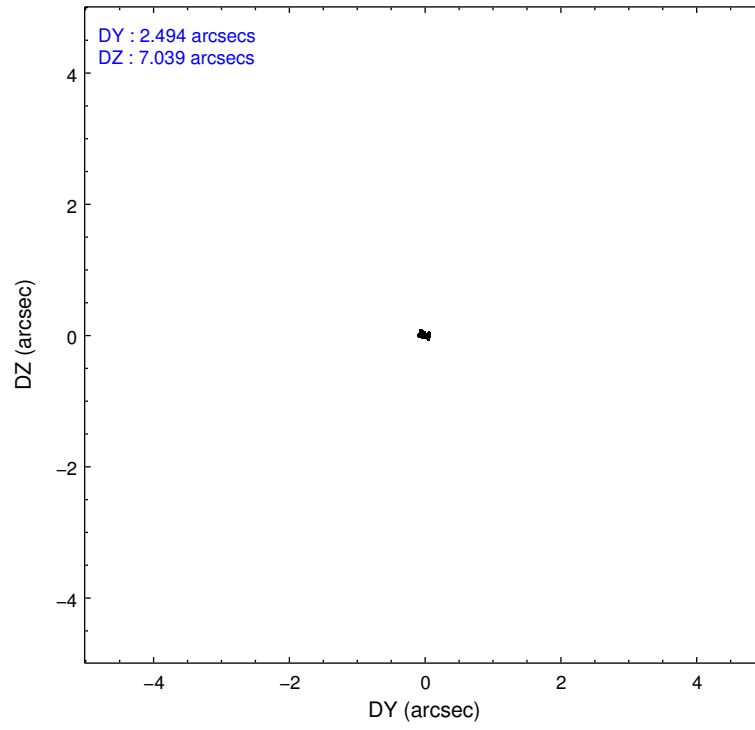
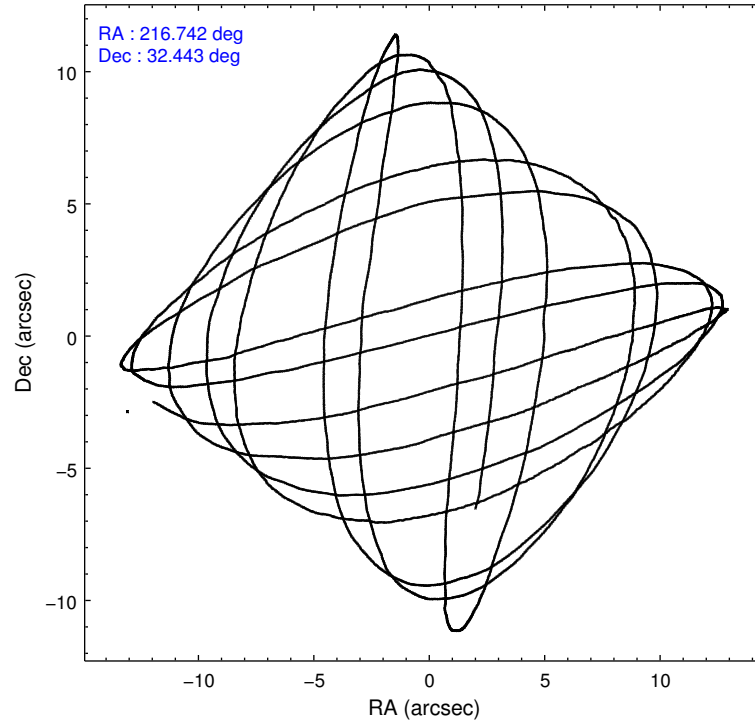
	ccd 0	ccd 1	ccd 2	ccd 3	ccd 6
level 1 events	29181	29652	31871	32181	31898
rejected events	25522	25681	28160	28495	28057
rejected %	87%	86%	88%	88%	87%

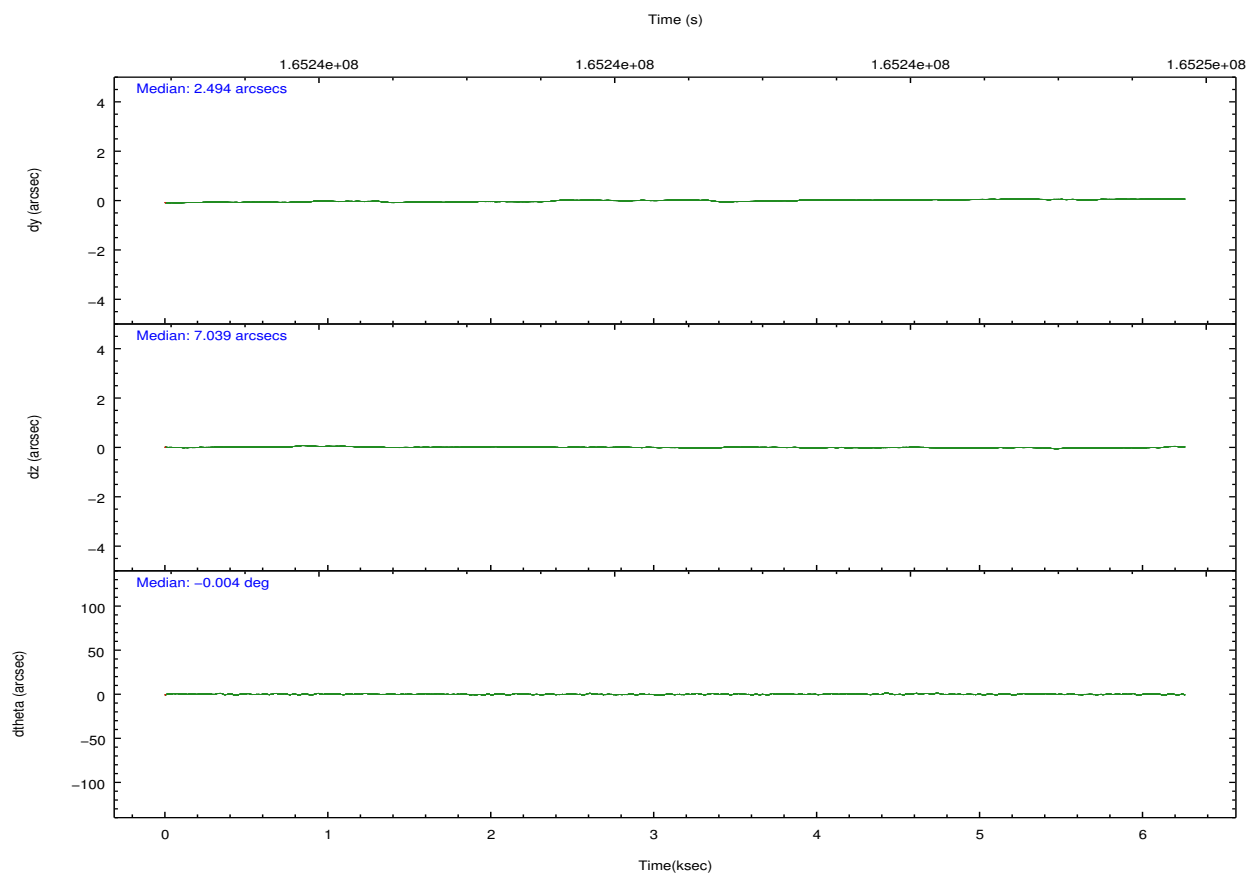
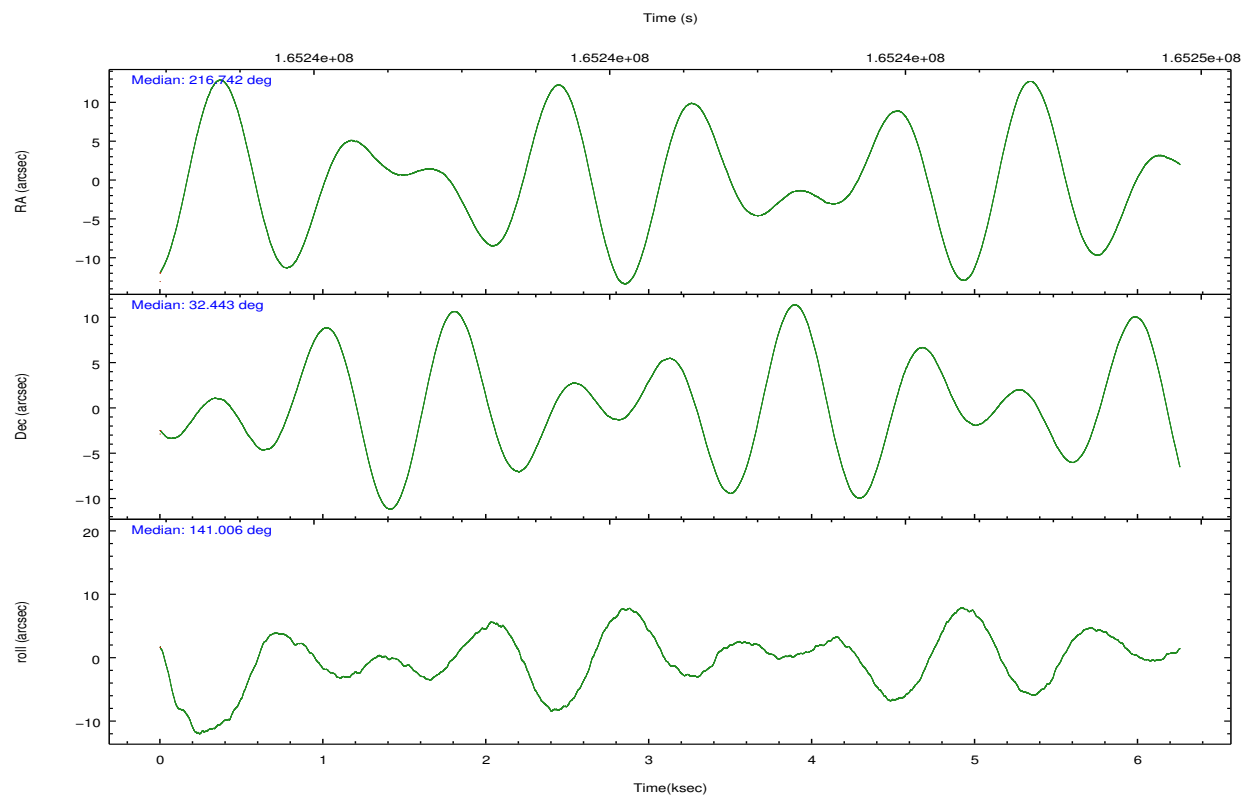
	ccd 0	ccd 1	ccd 2	ccd 3	ccd 6
grade 0 events	1612	1609	1661	1599	1572
	5%	5%	5%	4%	4%
grade 1 events	21	14	13	15	17
	0%	0%	0%	0%	0%
grade 2 events	721	836	777	728	758
	2%	2%	2%	2%	2%
grade 3 events	399	397	363	378	383
	1%	1%	1%	1%	1%
grade 4 events	323	399	335	344	359
	1%	1%	1%	1%	1%
grade 5 events	1315	1286	1214	1353	1429
	4%	4%	3%	4%	4%
grade 6 events	610	733	578	643	772
	2%	2%	1%	1%	2%
grade 7 events	24180	24378	26930	27121	26608
	82%	82%	84%	84%	83%

2.2 Compared Parameters

Parameter	Planned	Actual	Parameter	Planned	Actual
Instrument	ACIS	ACIS	Obspar format version number	7	7
Detector	ACIS-01236	ACIS-01236	Obspar file type	PREDICTED	ACTUAL
Grating	NONE	NONE	Obspar update status	NONE	UPDATED
Data mode	VFAINT	VFAINT	Number of optional ACIS chips dropped	0	0
Observation mode	POINTING	POINTING	On-chip summing requested	N	N
[deg] Pointing RA	216.773741	216.741692756477	Subarray requested	NONE	NONE
[deg] Pointing Dec	32.438367	32.44253783304296	Alternating exposures requested	N	N
[deg] Pointing Roll	140.784185	141.010071863278	[s] Primary exposure time	0.000000	3.1
[mm] SIM focus pos	-0.782348	-0.7809083437167272			
[mm] SIM defocus	0	0.001439871863259334			
[mm] SIM translation stage pos	-233.592463	-233.5874344608287			
[mm] SIM translation stage offset	0	-0.005018542100998502			
[s] Observation start time (MET)	165240640.184000	165239094.79356			
Observation start date	2003-03-28T12:09:36	2003-03-28T11:44:54			
[s] Observation end time (MET)	165245540.184000	165245675.29383			
Observation end date	2003-03-28T13:31:16	2003-03-28T13:34:35			
Read mode	TIMED	TIMED			

2.3 Aspect



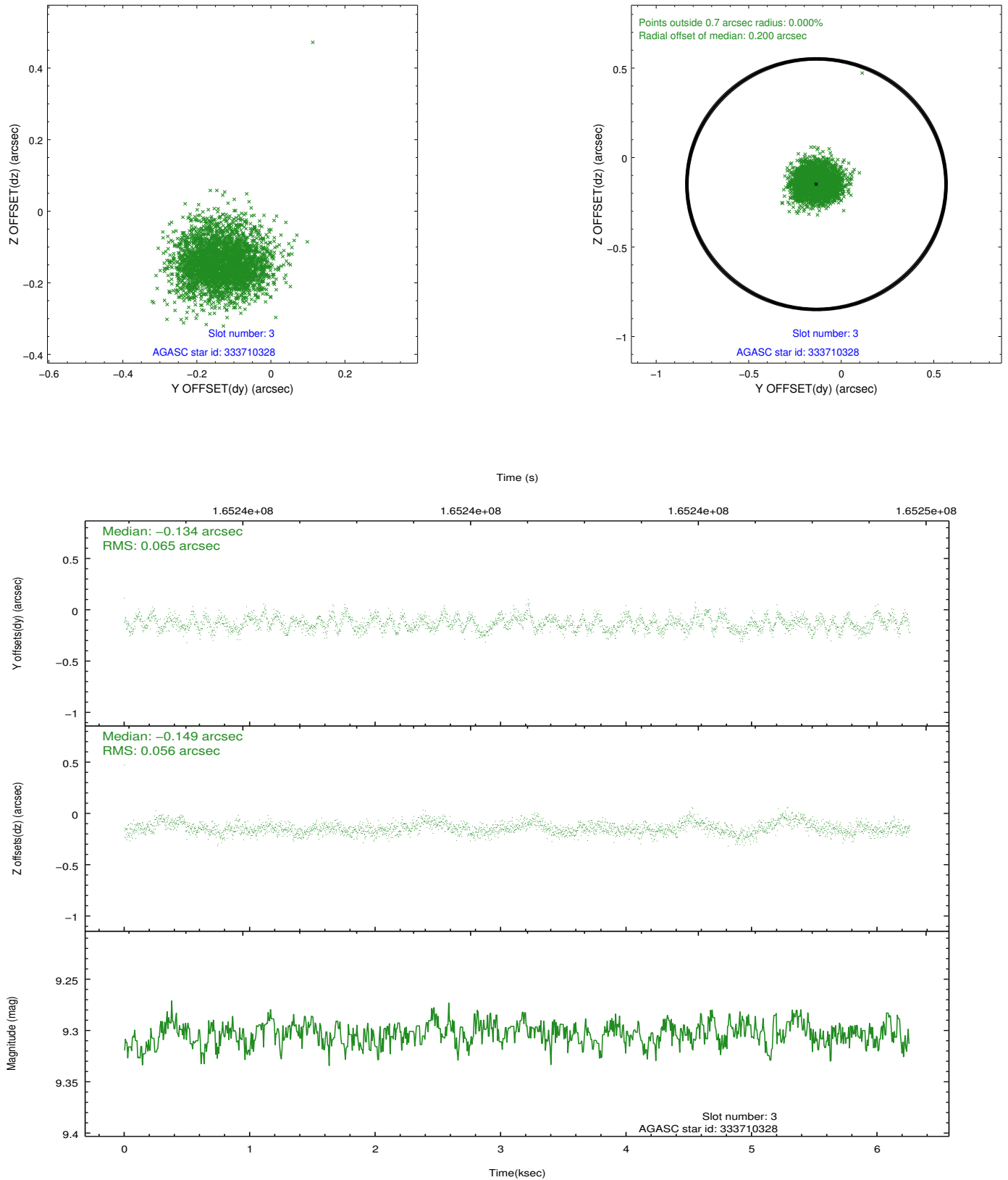


Slot Statistics

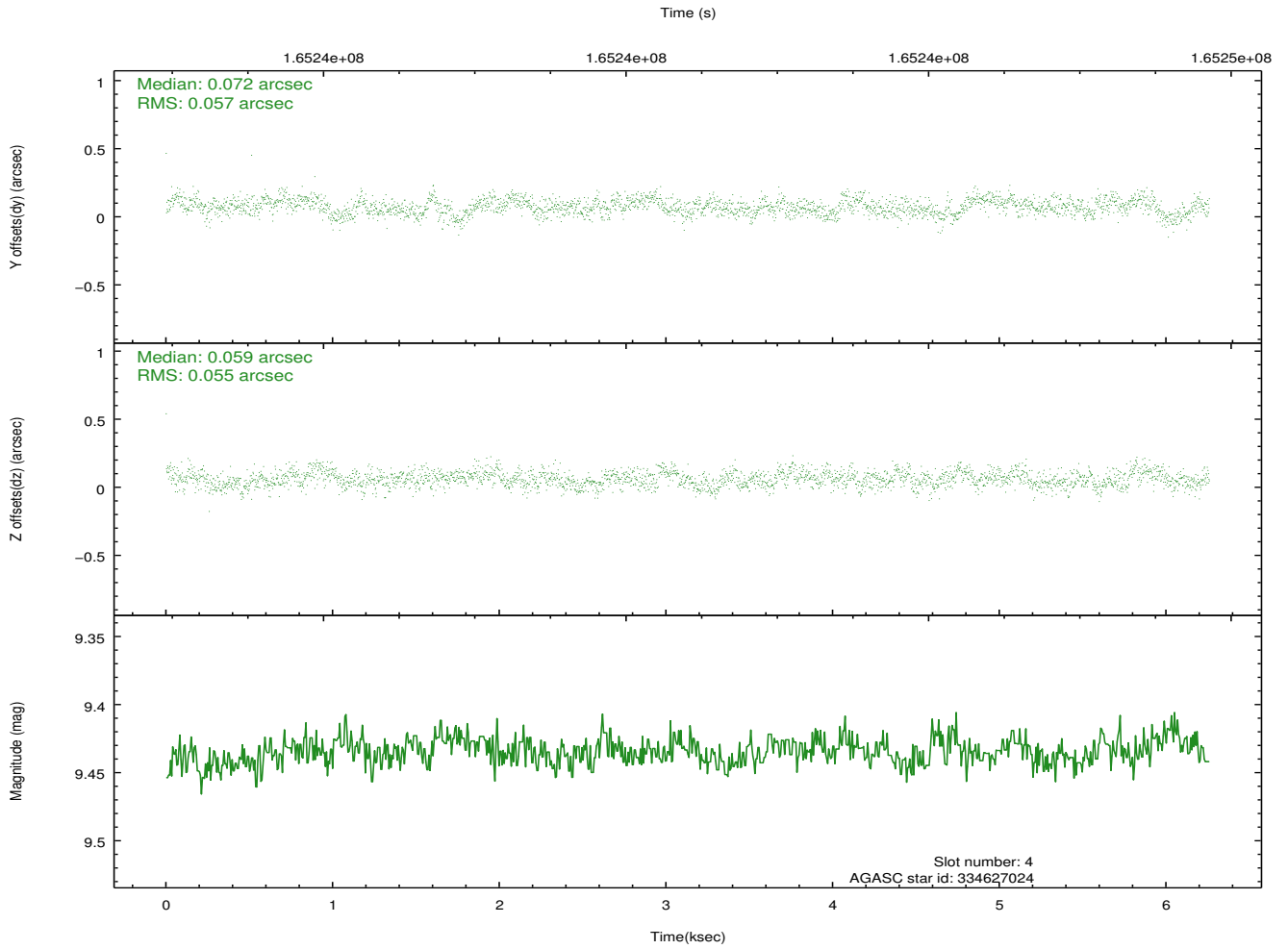
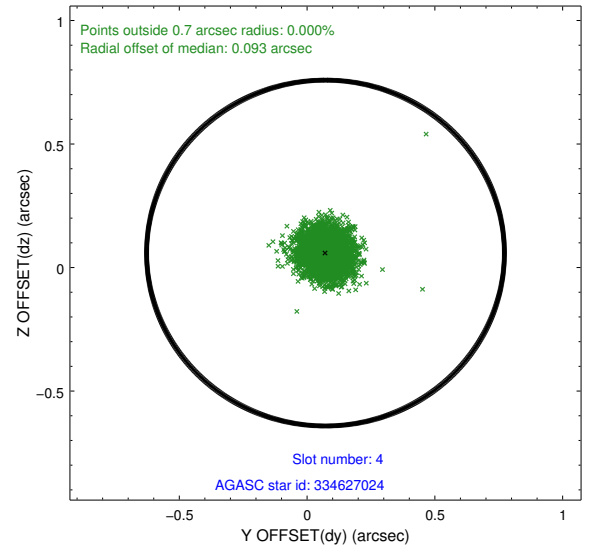
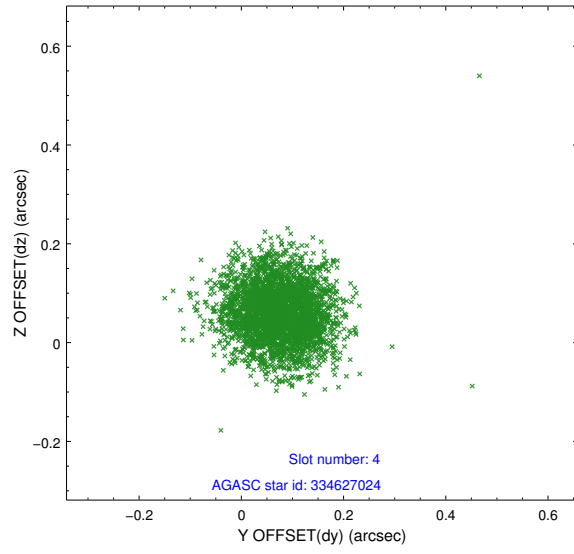
slot	status	id	mag	n_pts	med_dy	med_dz	dr1	dr2	ra	dec	mean_y	mean_z
0	FID	ACIS-I-1	7.25	1527	0.065	-0.056	0.006	0.011	0.000000	0.000000	937.42	-830.45
1	FID	ACIS-I-5	7.24	1527	0.085	0.148	0.006	0.010	0.000000	0.000000	-1810.22	1066.66
2	FID	ACIS-I-6	7.25	1527	-0.241	-0.022	0.007	0.012	0.000000	0.000000	401.54	1712.15
3	GUIDE	333710328	9.30	3053	-0.134	-0.149	0.091	0.142	215.919797	32.382995	1892.16	1788.17
4	GUIDE	334627024	9.43	3050	0.072	0.059	0.083	0.134	217.318801	32.278221	-1646.42	-604.65
5	GUIDE	334635688	8.43	3054	0.102	-0.071	0.064	0.108	217.014858	31.788165	-2051.44	1346.40
6	GUIDE	335029808	9.08	3053	-0.108	0.146	0.082	0.134	216.789548	33.180488	1651.81	-2099.06
7	GUIDE	335022112	9.20	3052	0.066	0.007	0.079	0.128	216.659296	32.794758	1080.27	-775.42

2.4 Star Slots

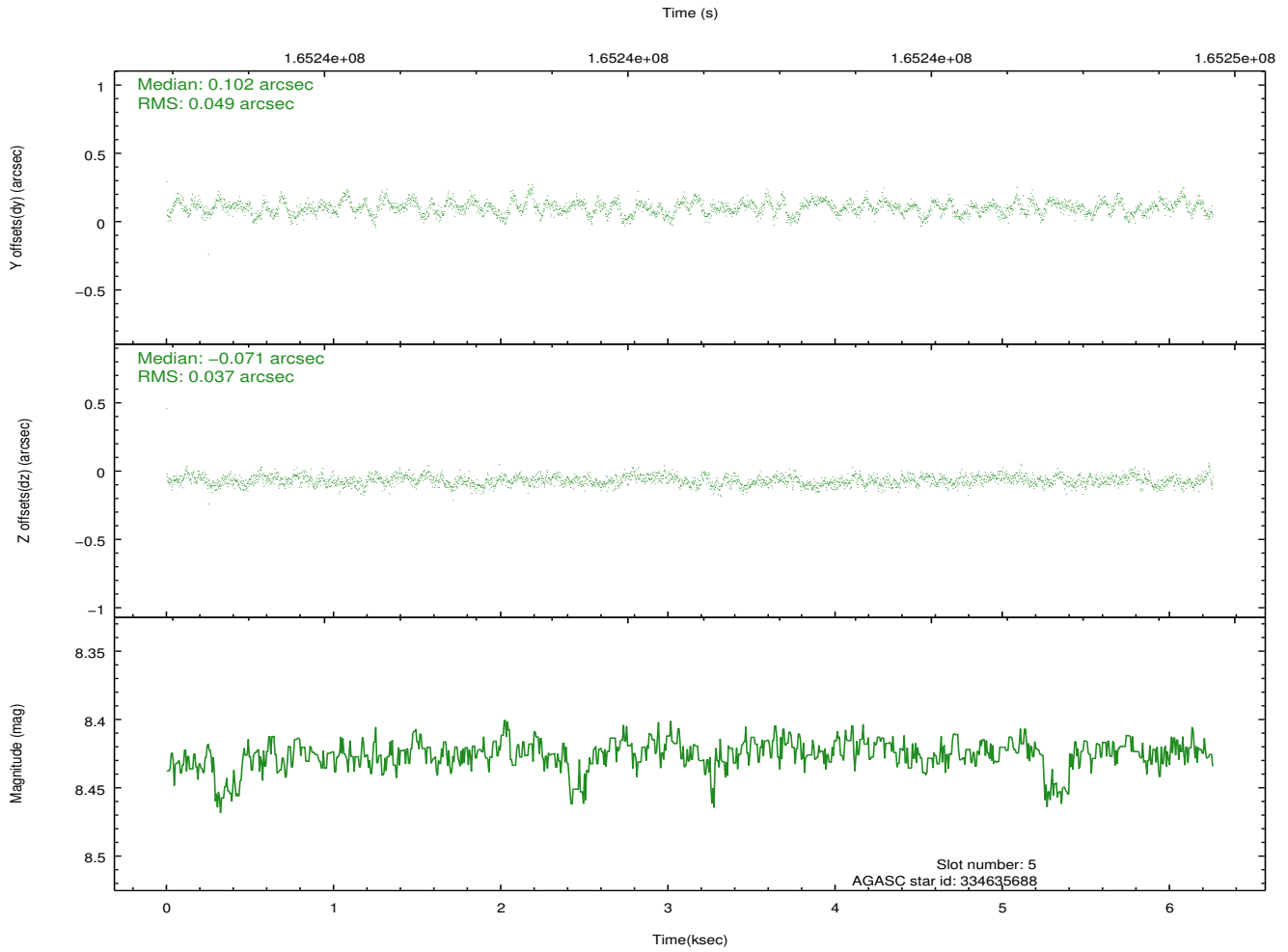
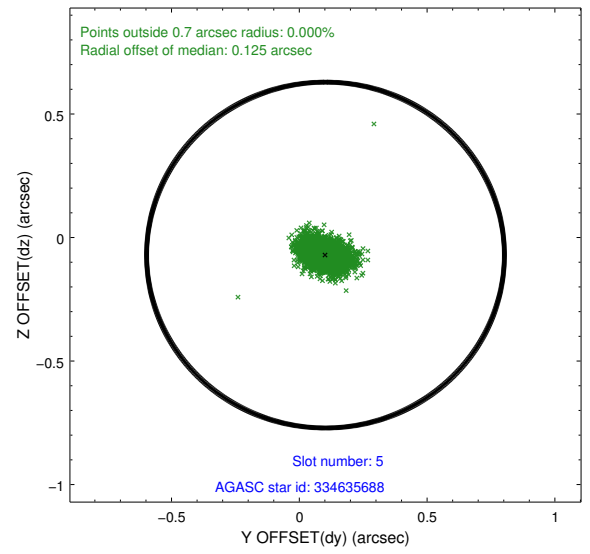
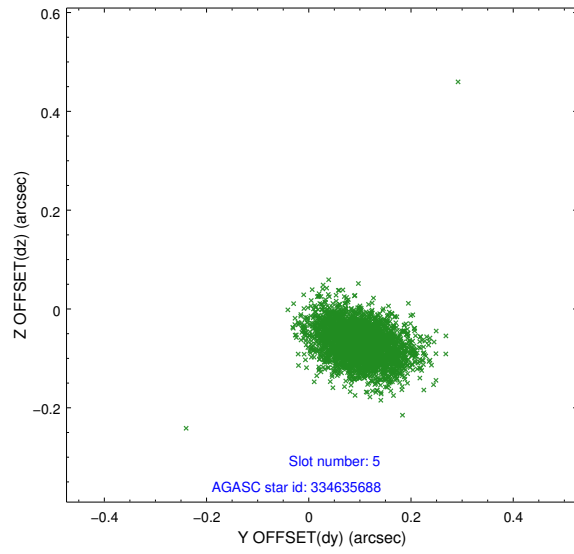
2.4.1 Slot 3



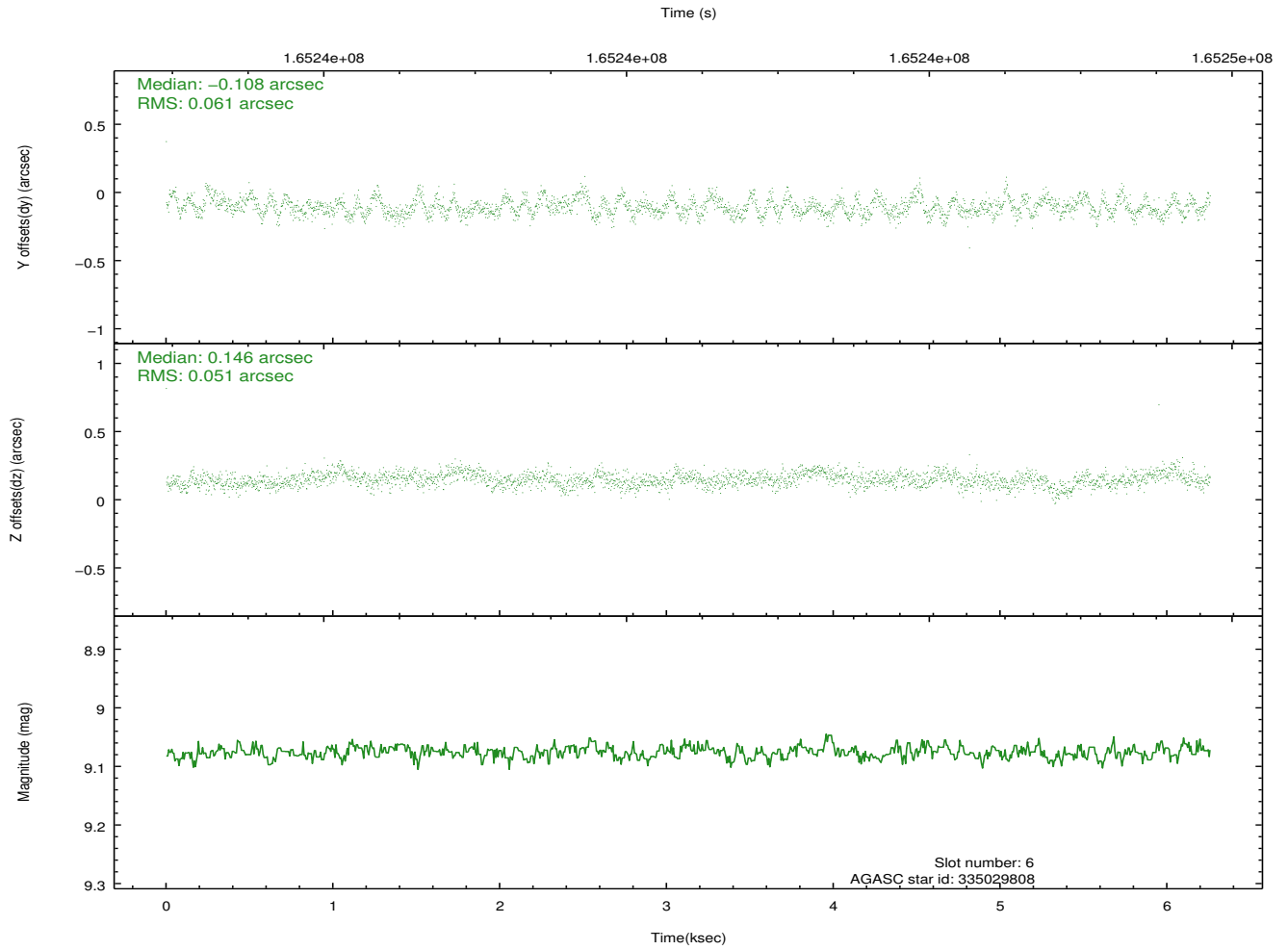
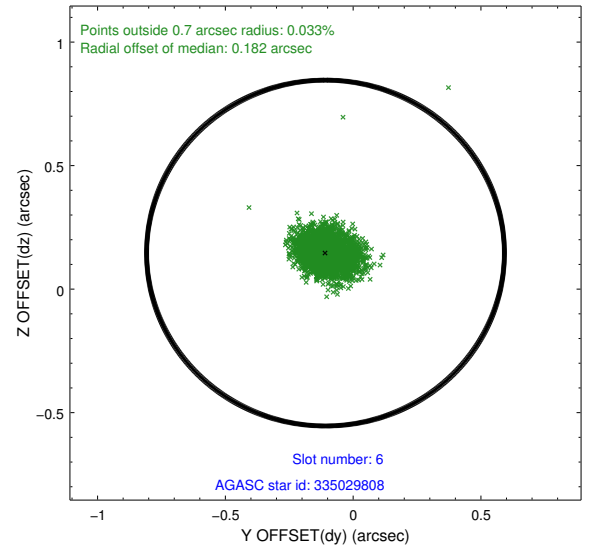
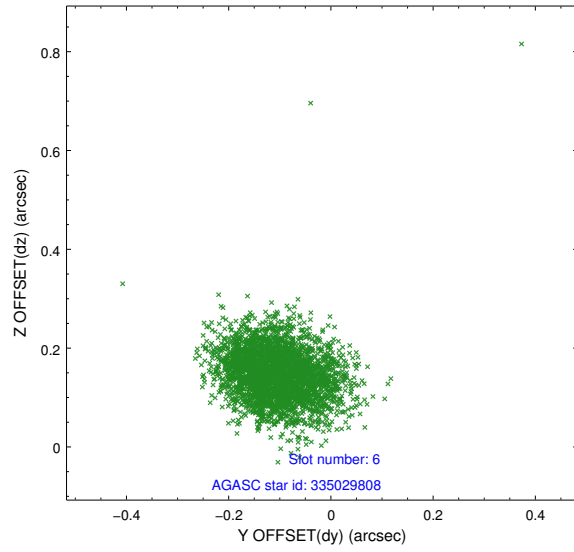
2.4.2 Slot 4



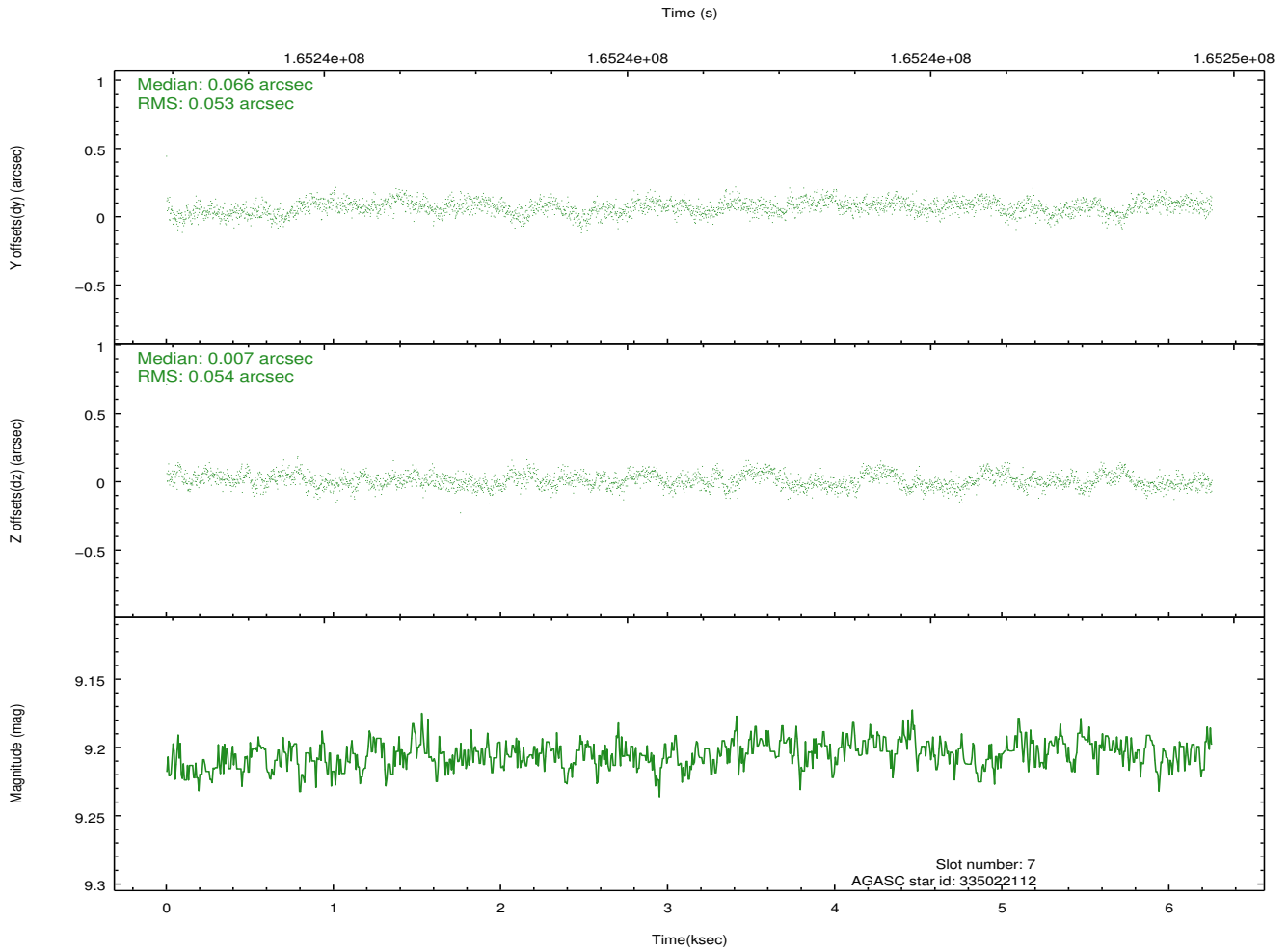
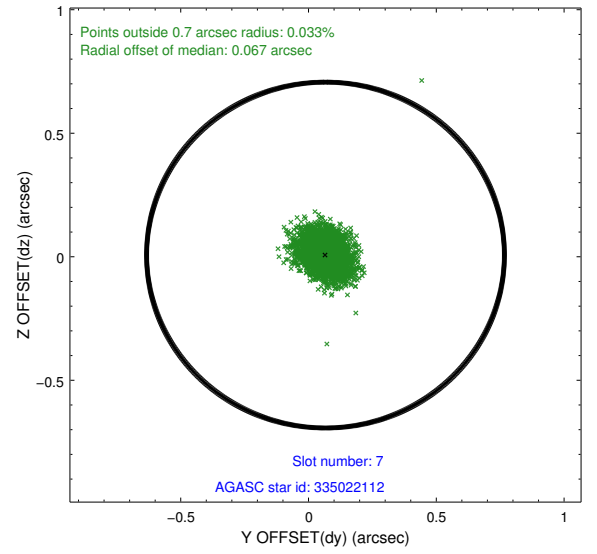
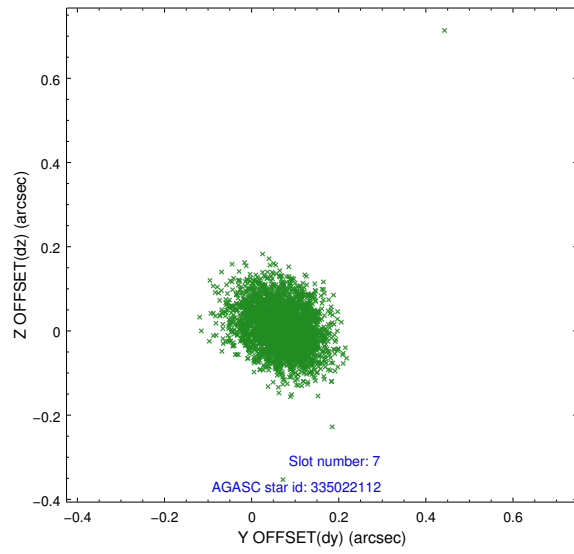
2.4.3 Slot 5



2.4.4 Slot 6

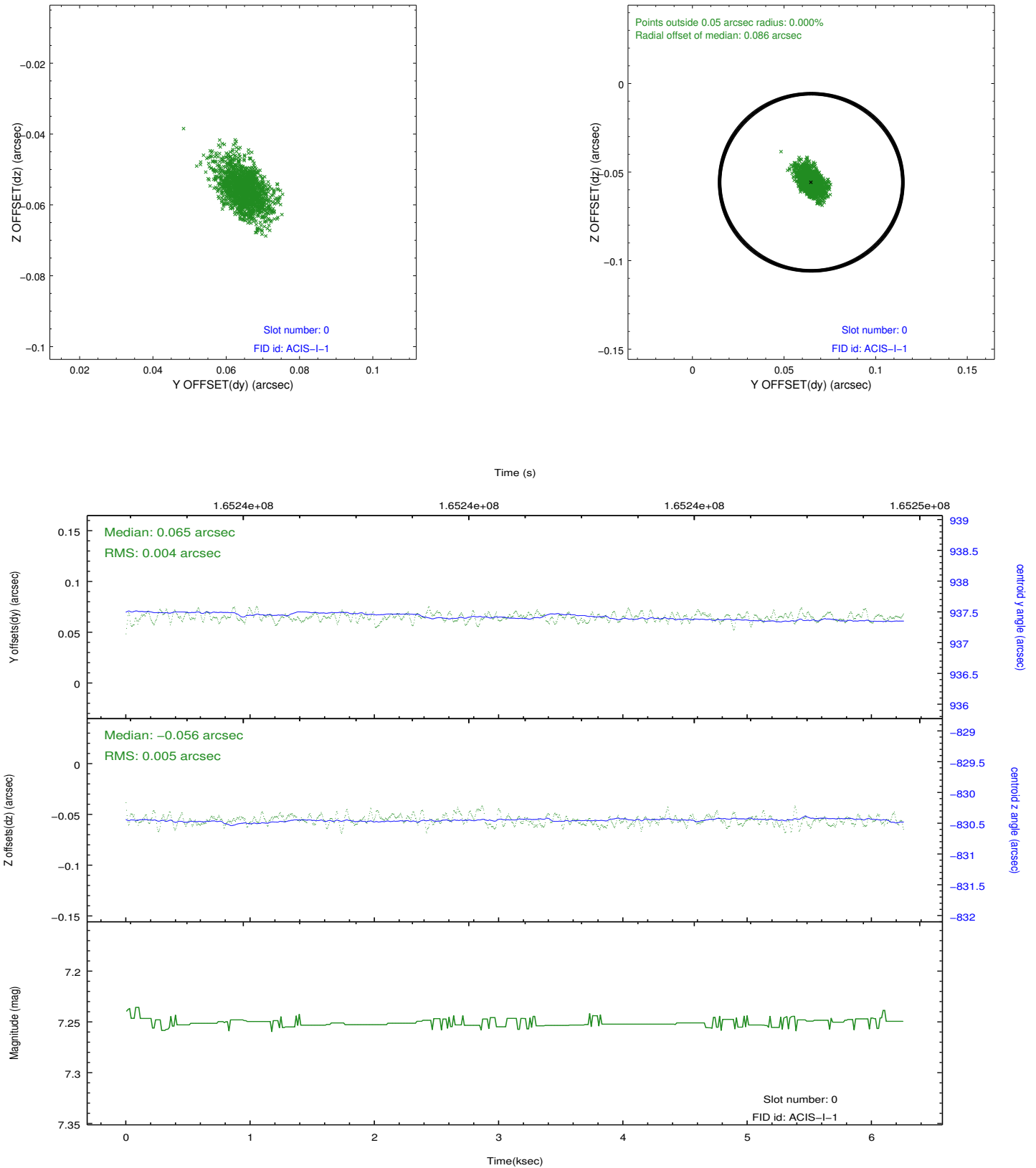


2.4.5 Slot 7

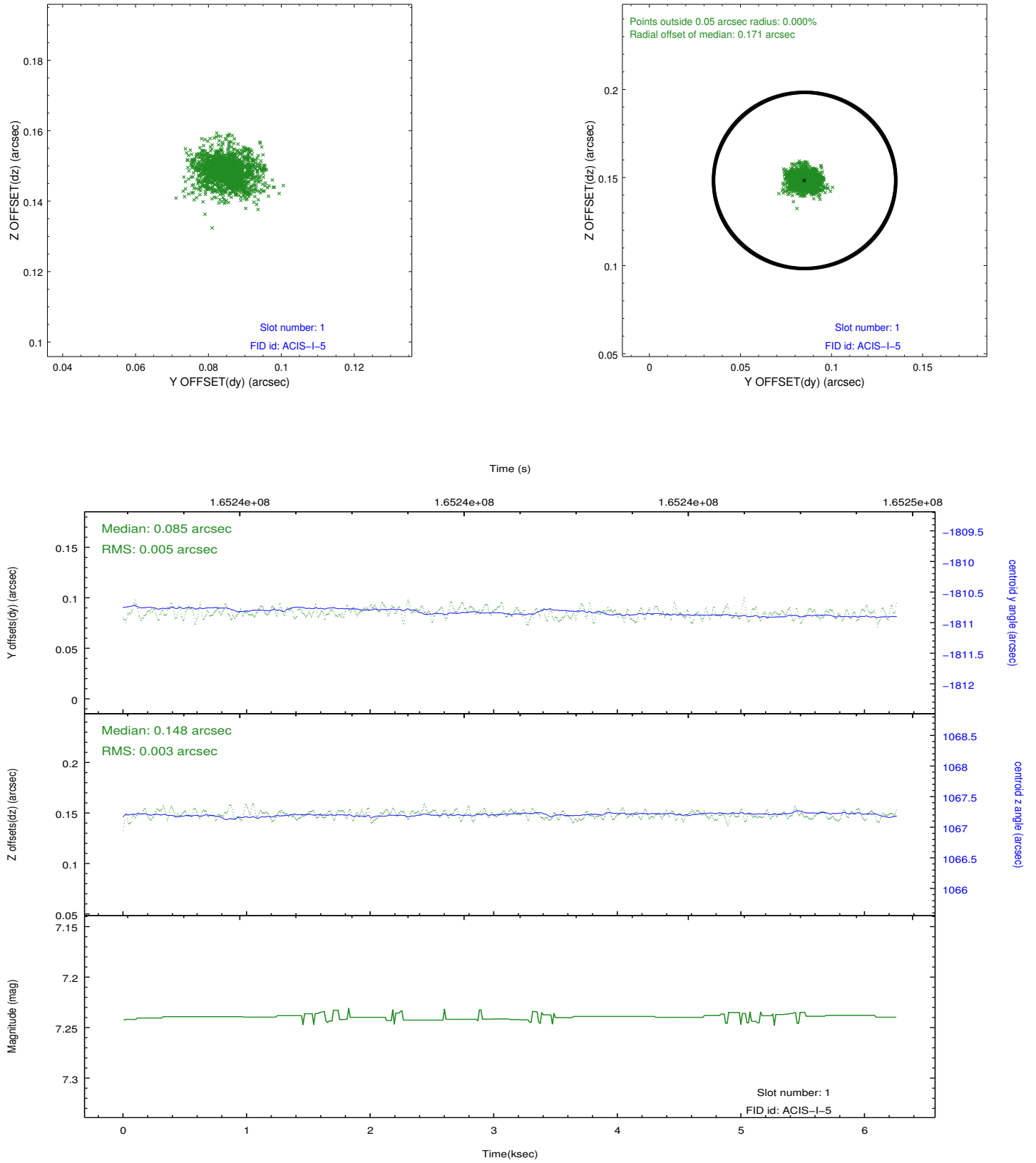


2.5 FID Slots

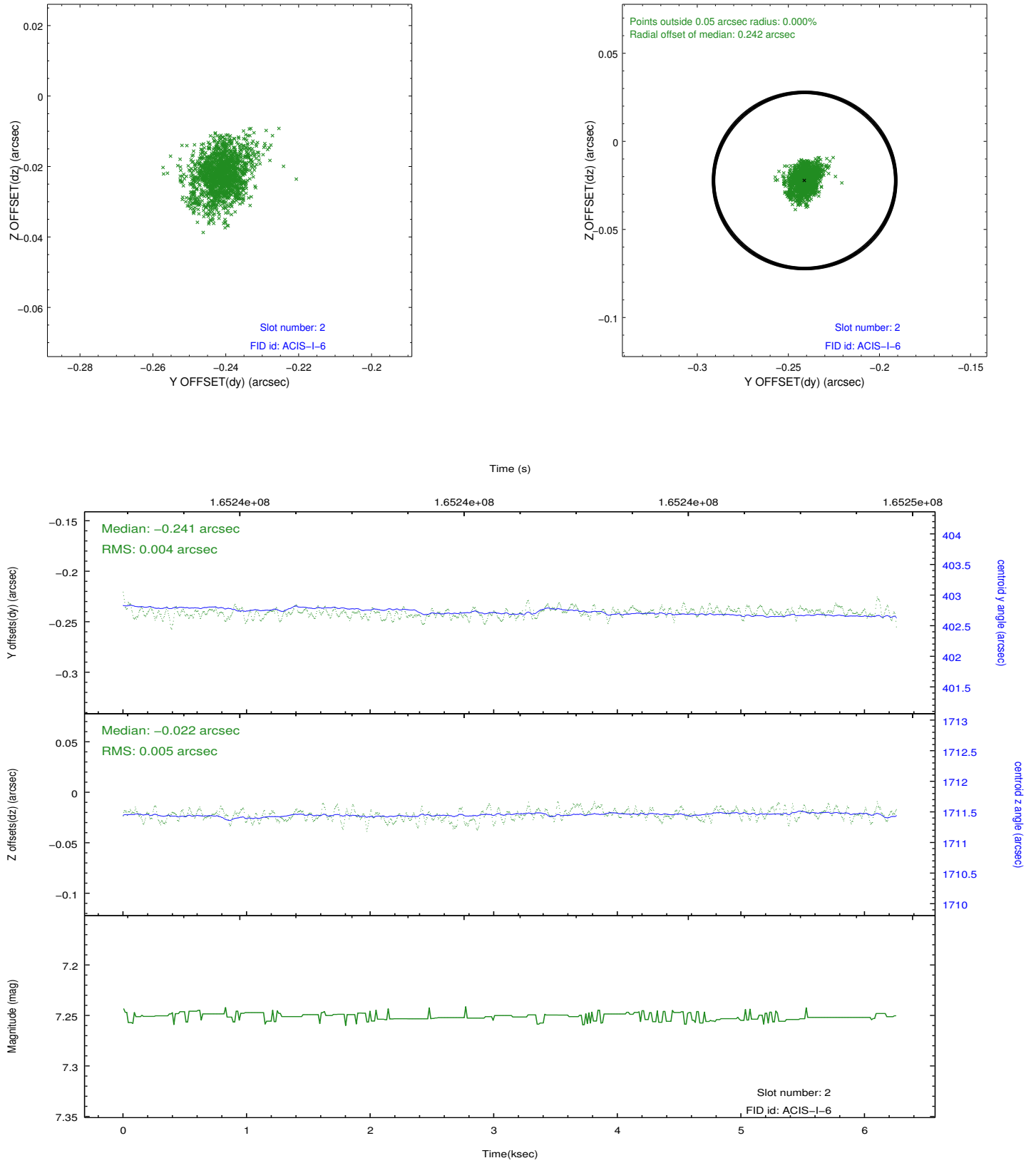
2.5.1 Slot 0



2.5.2 Slot 1



2.5.3 Slot 2



A Summary

A.1 Status

V&V Scientist	Jen Lauer
V&V Date (YYYY-MM-DD)	2012.11.09
V&V Edition	1
V&V Disposition and Status	OK
V&V Charge Time	5.021

A.2 Comments