

# V&V Reference Report

## L2 ASCDS Version : 8.4.5

Observation 4221 - L2 Version 3  
Chandra X-Ray Center

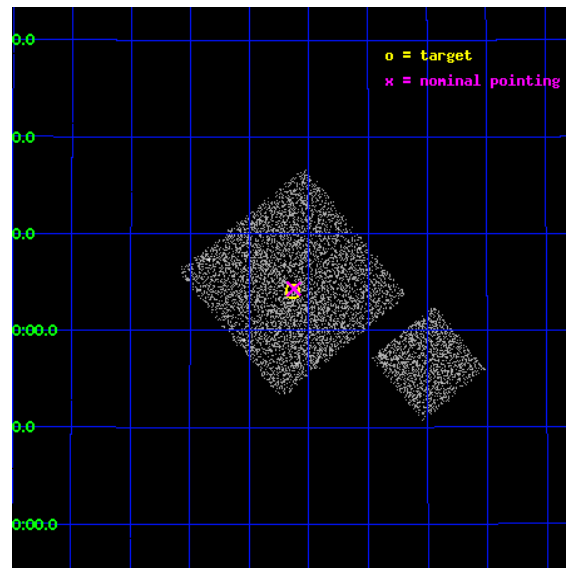
L2 Processing Date : Oct 25 2012

## Contents

<b>1</b>	<b>Front</b>	<b>2</b>
<b>2</b>	<b>OBI</b>	<b>3</b>
2.1	OBI . . . . .	3
2.1.1	Images . . . . .	3
2.1.2	Bias . . . . .	3
2.1.3	Parameters . . . . .	4
2.1.4	Events . . . . .	4
2.2	Compared Parameters . . . . .	5
2.3	Aspect . . . . .	6
2.4	Star Slots . . . . .	9
2.4.1	Slot 3 . . . . .	9
2.4.2	Slot 4 . . . . .	10
2.4.3	Slot 5 . . . . .	11
2.4.4	Slot 6 . . . . .	12
2.4.5	Slot 7 . . . . .	13
2.5	FID Slots . . . . .	14
2.5.1	Slot 0 . . . . .	14
2.5.2	Slot 1 . . . . .	15
2.5.3	Slot 2 . . . . .	16
<b>A</b>	<b>Summary</b>	<b>17</b>
A.1	Status . . . . .	17
A.2	Comments . . . . .	17

# 1 Front

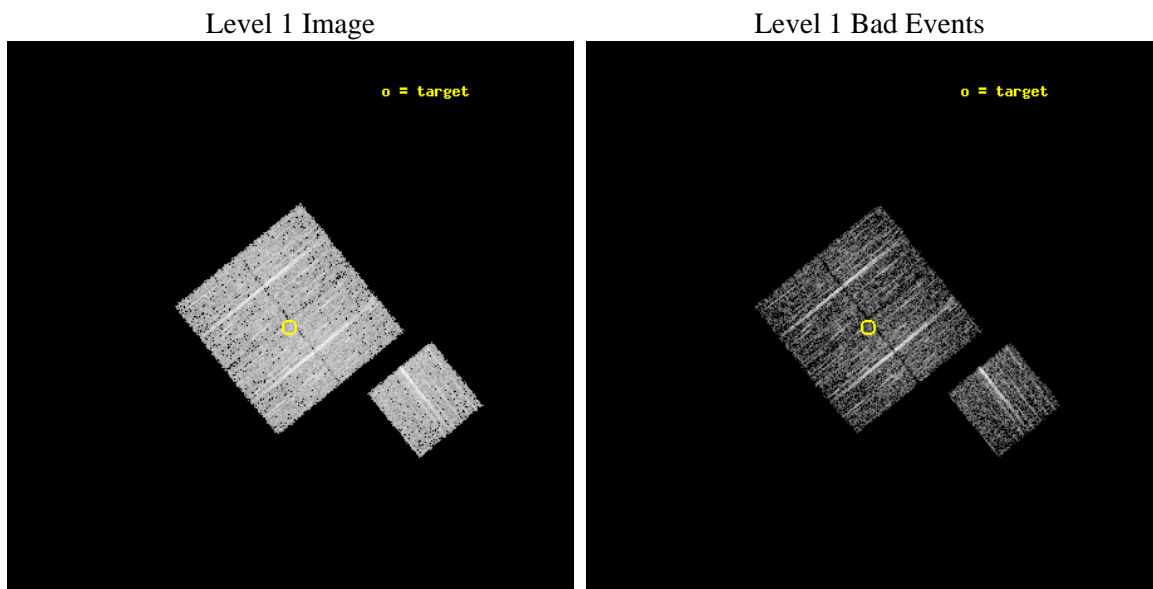
seq_num	900264	Sequence number
obs_id	4221	Observation id
title	A CHANDRA WIDE-FIELD SURVEY TO MAP THE COSMIC WEB AND INVESTIGATE THE EVOLUTION OF NUCLEAR ACCRETION	Proposal title
observer	Dr. Christine Jones	Principal investigator
object	SS12	Source name
dtcycle	0	&#160
cycle	P	events from which exps? Prim/Second/Both
ra_targ	218.034014	Observer's specified target RA [deg]
dec_targ	34.068	Observer's specified target Dec [deg]
ra_nom	218.03140979311	Nominal RA [deg]
dec_nom	34.07208821225	Nominal Dec [deg]
roll_nom	141.01015102653	Nominal Roll [deg]
revision	3	Processing version of data
ontime	4674.131200552	Sum of GTIs [s]
livetime	4613.0602353714	Livetime [s]
ontime0	4674.0080606043	Sum of GTIs [s]
ontime1	4674.0491205454	Sum of GTIs [s]
ontime2	4674.0901605487	Sum of GTIs [s]
ontime3	4674.131200552	Sum of GTIs [s]
ontime6	4673.9670405388	Sum of GTIs [s]
l2events	9208	Number of level 2 events



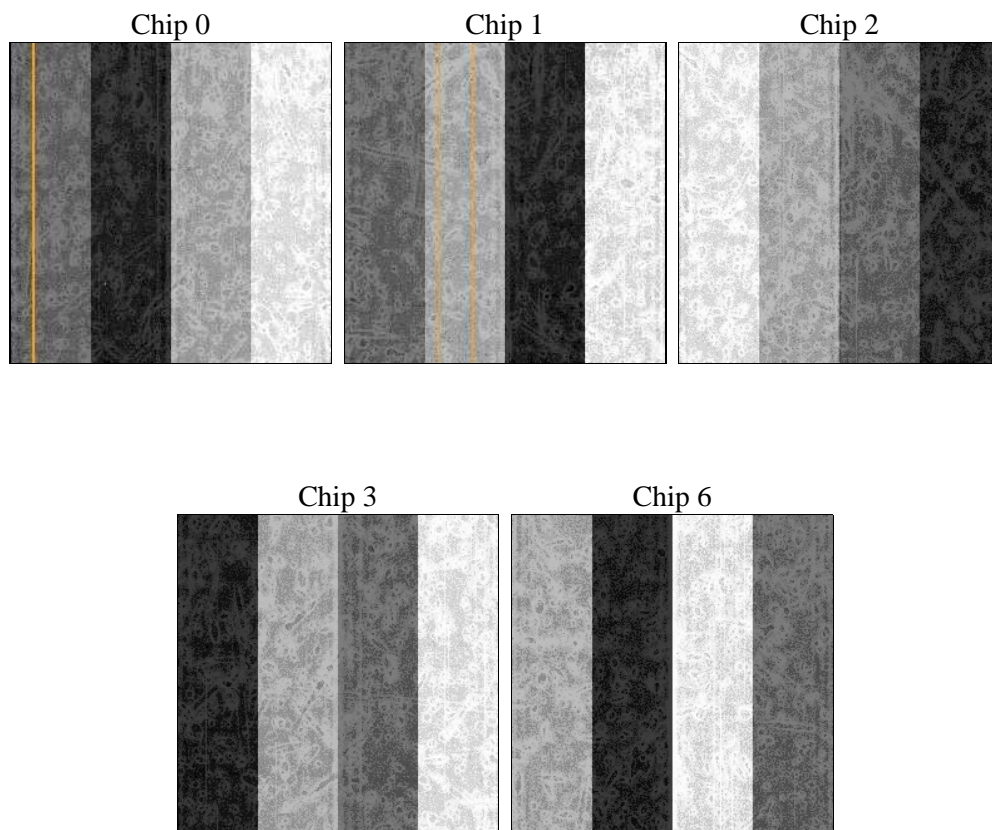
## 2 OBI

### 2.1 OBI

#### 2.1.1 Images



#### 2.1.2 Bias



### 2.1.3 Parameters

obi_num	1	Obi number	sched_exp_time	4900.000000	[s] Scheduled observation exposure time
ascdsver	8.4.5	Processing system revision	ontime	4674.131200552	Sum of GTIs [s]
caldsver	4.5.2	&#160	ontime0	4674.0080606043	Sum of GTIs [s]
date	2012-10-25T23:03:39	Date and time of file creation	ontime1	4674.0491205454	Sum of GTIs [s]
revision	3	Processing version of data	ontime2	4674.0901605487	Sum of GTIs [s]
			ontime3	4674.131200552	Sum of GTIs [s]
			ontime6	4673.9670405388	Sum of GTIs [s]
			l1events	115414	Number of level 1 events

### 2.1.4 Events

	ccd 0	ccd 1	ccd 2	ccd 3	ccd 6
level 1 events	22657	21381	24192	24387	22797
rejected events	20500	19000	21987	22194	20521
rejected %	90%	88%	90%	91%	90%

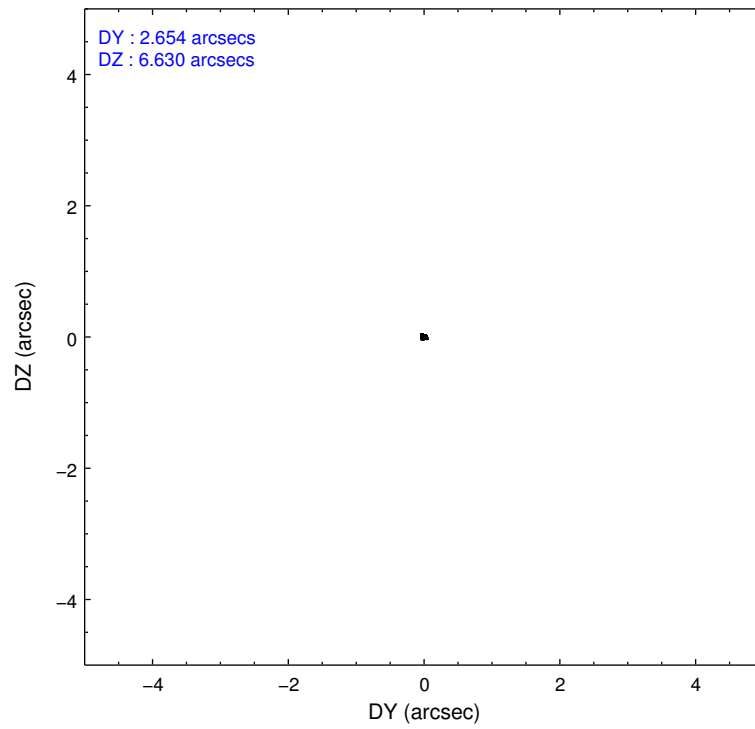
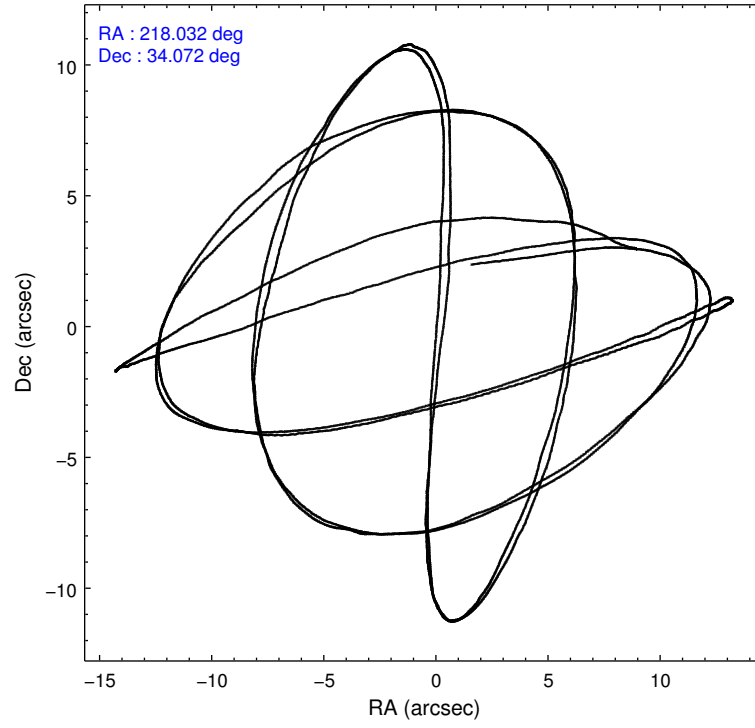
	ccd 0	ccd 1	ccd 2	ccd 3	ccd 6
grade 0 events	790	854	834	856	777
	3%	3%	3%	3%	3%
grade 1 events	11	9	14	13	6
	0%	0%	0%	0%	0%
grade 2 events	485	473	490	456	506
	2%	2%	2%	1%	2%
grade 3 events	224	288	239	304	264
	0%	1%	0%	1%	1%
grade 4 events	260	291	233	222	284
	1%	1%	0%	0%	1%
grade 5 events	673	711	667	802	754
	2%	3%	2%	3%	3%
grade 6 events	399	476	415	359	445
	1%	2%	1%	1%	1%
grade 7 events	19815	18279	21300	21375	19761
	87%	85%	88%	87%	86%

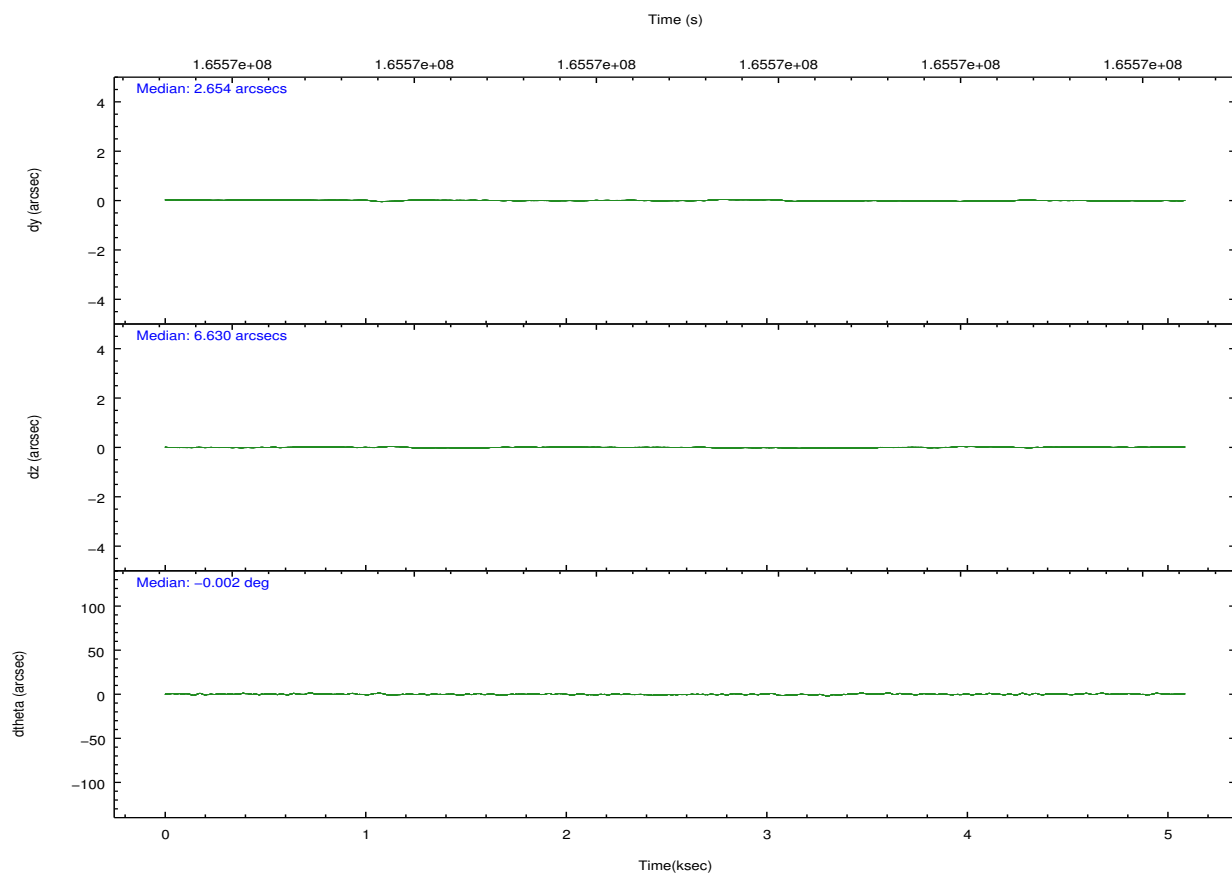
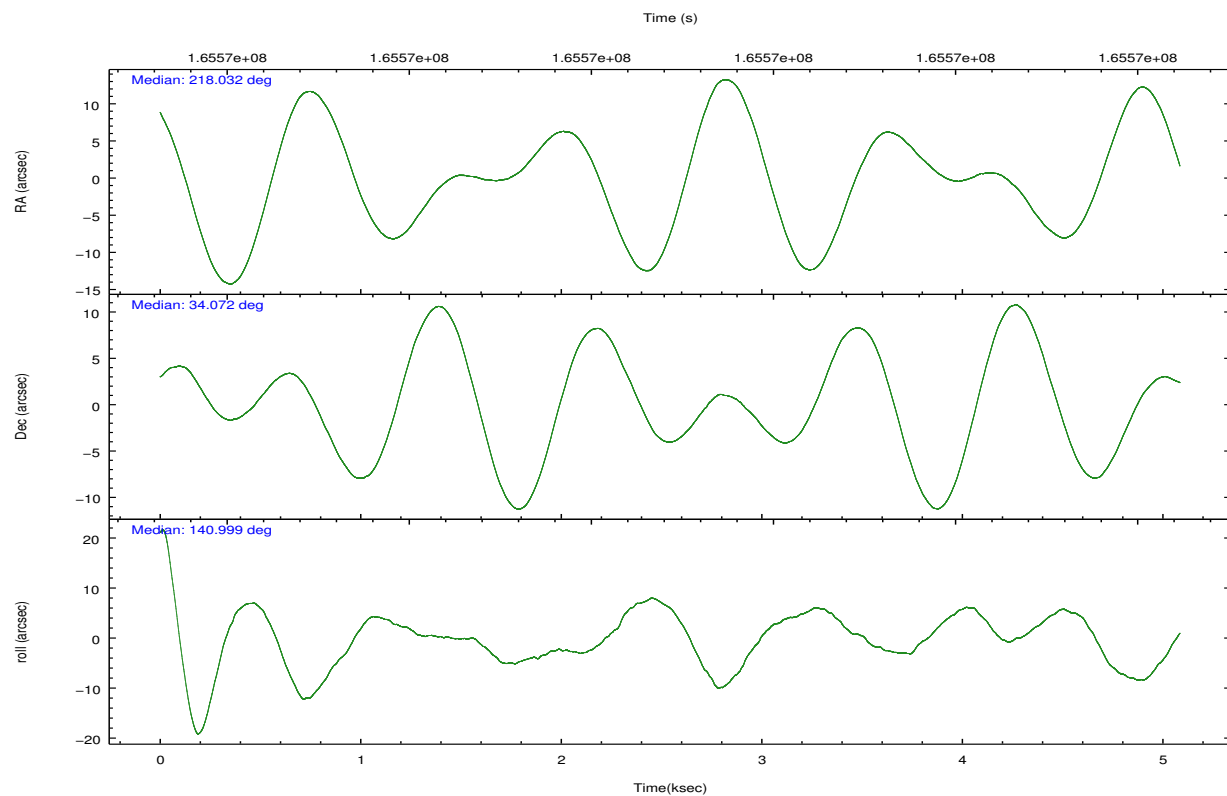


## 2.2 Compared Parameters

Parameter	Planned	Actual	Parameter	Planned	Actual
Instrument	ACIS	ACIS	Obspar format version number	7	7
Detector	ACIS-01236	ACIS-01236	Obspar file type	PREDICTED	ACTUAL
Grating	NONE	NONE	Obspar update status	NONE	UPDATED
Data mode	VFAINT	VFAINT	Number of optional ACIS chips dropped	0	0
Observation mode	POINTING	POINTING	On-chip summing requested	N	N
[deg] Pointing RA	218.064056	218.0314097931117	Subarray requested	NONE	NONE
[deg] Pointing Dec	34.067923	34.07208821225016	Alternating exposures requested	N	N
[deg] Pointing Roll	140.783174	141.0101510265294	[s] Primary exposure time	0.000000	3.1
[mm] SIM focus pos	-0.782348	-0.7809083437167272			
[mm] SIM defocus	0	0.001439871863259334			
[mm] SIM translation stage pos	-233.592463	-233.5874344608287			
[mm] SIM translation stage offset	0	-0.005018542100998502			
[s] Observation start time (MET)	165566074.184000	165565697.73232			
Observation start date	2003-04-01T06:33:30	2003-04-01T06:28:17			
[s] Observation end time (MET)	165570974.184000	165571107.68255			
Observation end date	2003-04-01T07:55:10	2003-04-01T07:58:27			
Read mode	TIMED	TIMED			

## 2.3 Aspect



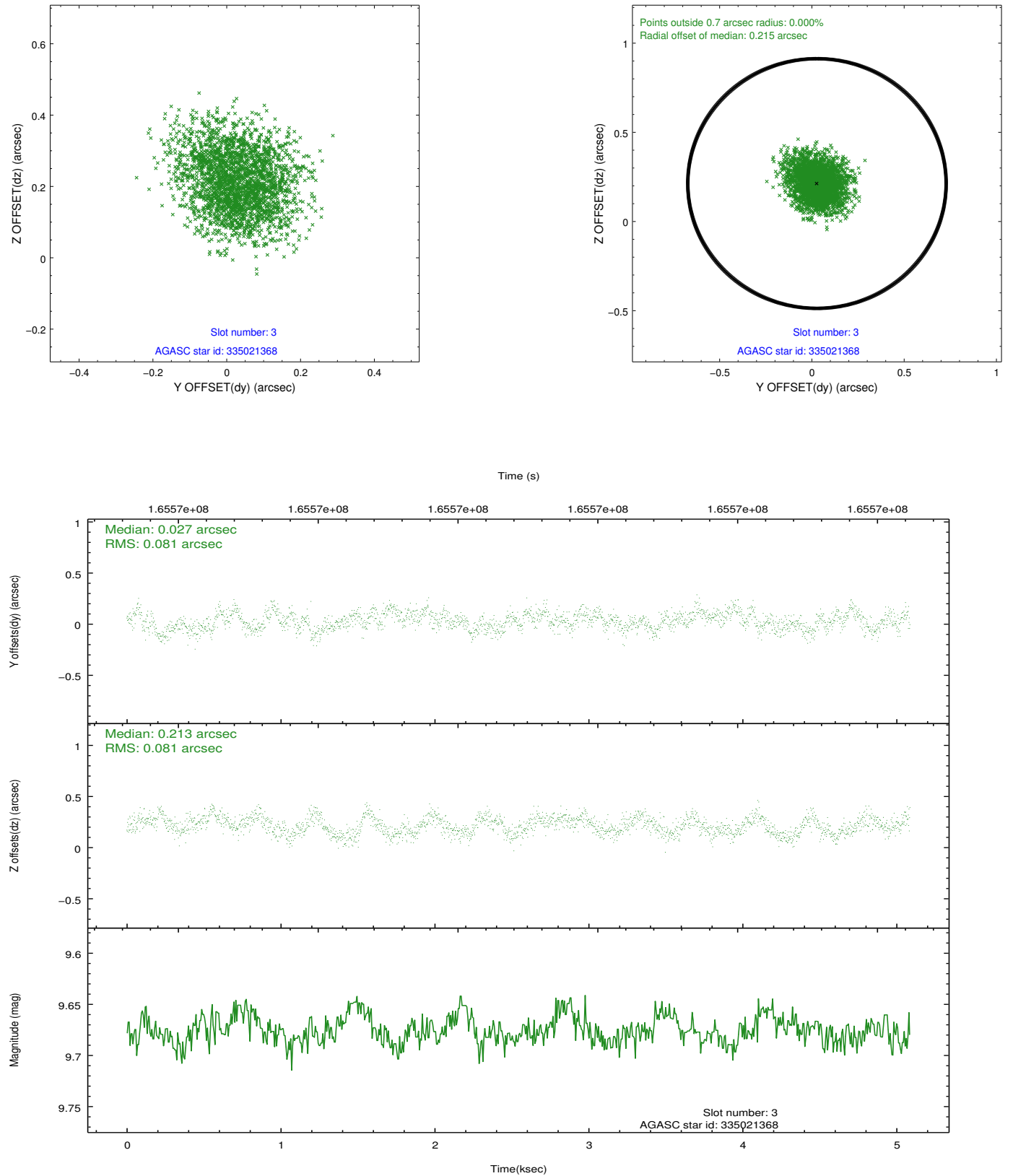


### Slot Statistics

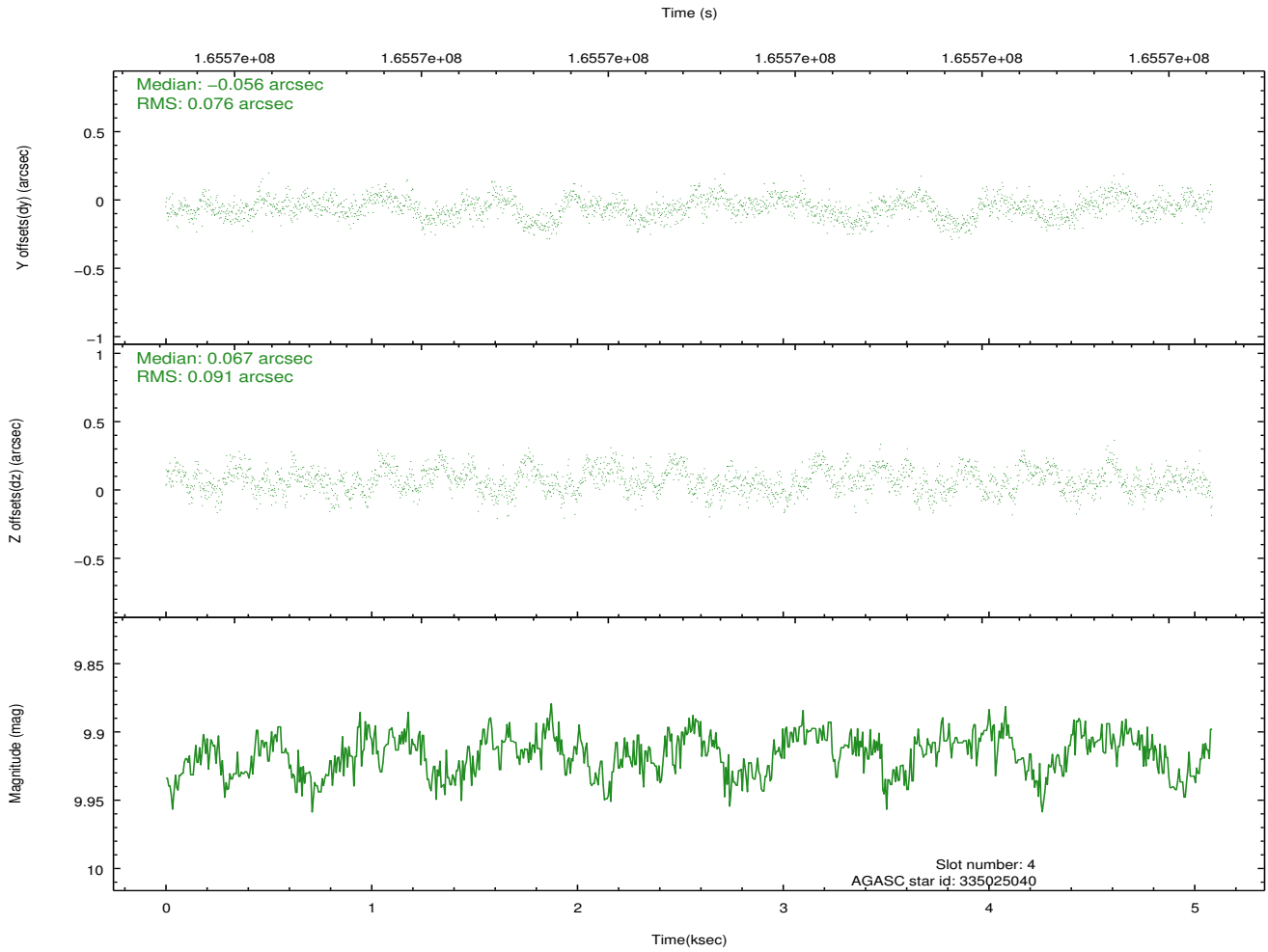
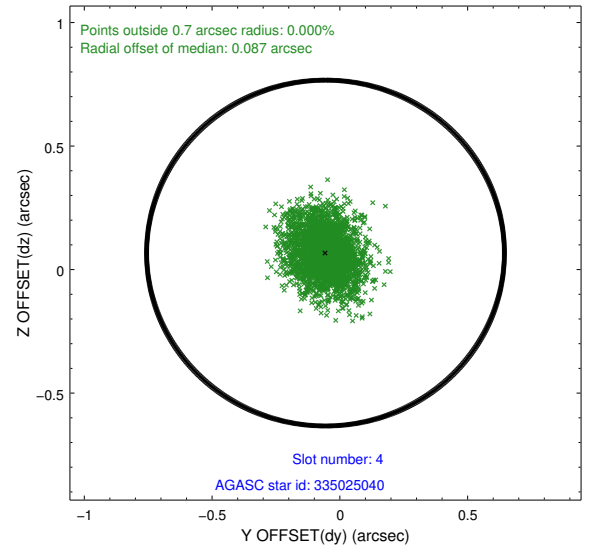
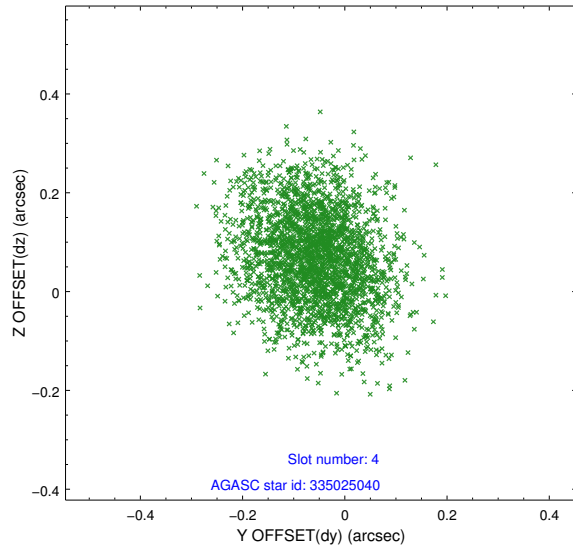
slot	status	id	mag	n_pts	med_dy	med_dz	dr1	dr2	ra	dec	mean_y	mean_z
0	FID	ACIS-I-1	7.25	1241	-0.039	-0.050	0.008	0.014	0.000000	0.000000	937.10	-830.07
1	FID	ACIS-I-4	7.19	1241	0.066	0.077	0.008	0.013	0.000000	0.000000	2157.93	1069.26
2	FID	ACIS-I-5	7.24	1241	-0.124	0.044	0.007	0.012	0.000000	0.000000	-1809.43	1068.47
3	GUIDE	335021368	9.68	2480	0.027	0.213	0.123	0.197	217.529643	33.934817	936.41	1378.03
4	GUIDE	335025040	9.92	2478	-0.056	0.067	0.128	0.204	218.601670	34.305240	-694.89	-1675.10
5	BAD	335025848	9.69	2357	0.132	-0.371	0.264	0.357	217.530531	33.778292	579.94	1813.47
6	GUIDE	335028696	9.20	2482	-0.008	0.101	0.137	0.213	217.260519	33.844112	1358.08	2137.50
7	GUIDE	335027640	9.14	2478	-0.080	-0.027	0.146	0.230	218.092211	33.193770	-2055.19	2385.39

## 2.4 Star Slots

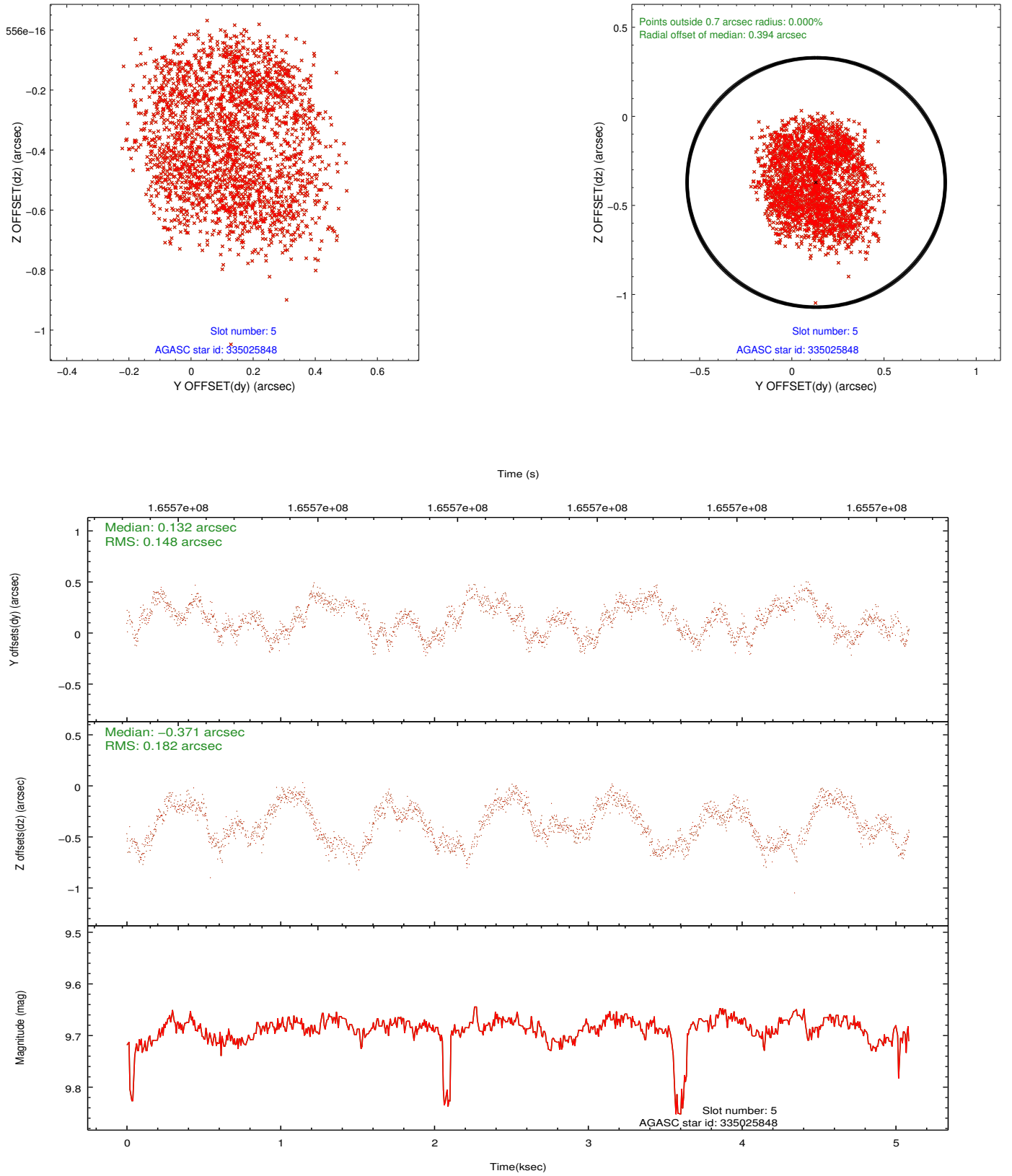
### 2.4.1 Slot 3



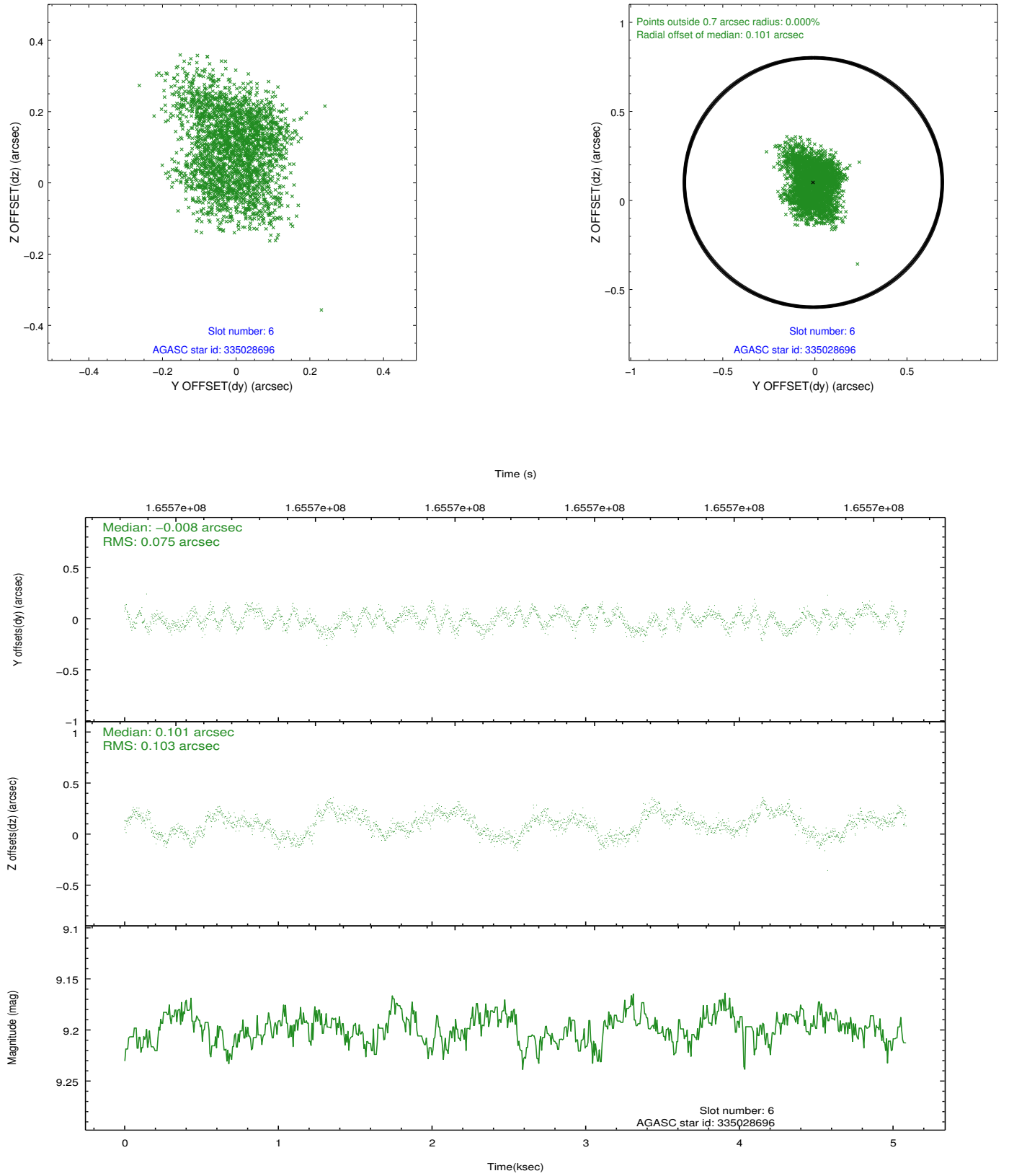
## 2.4.2 Slot 4



### 2.4.3 Slot 5

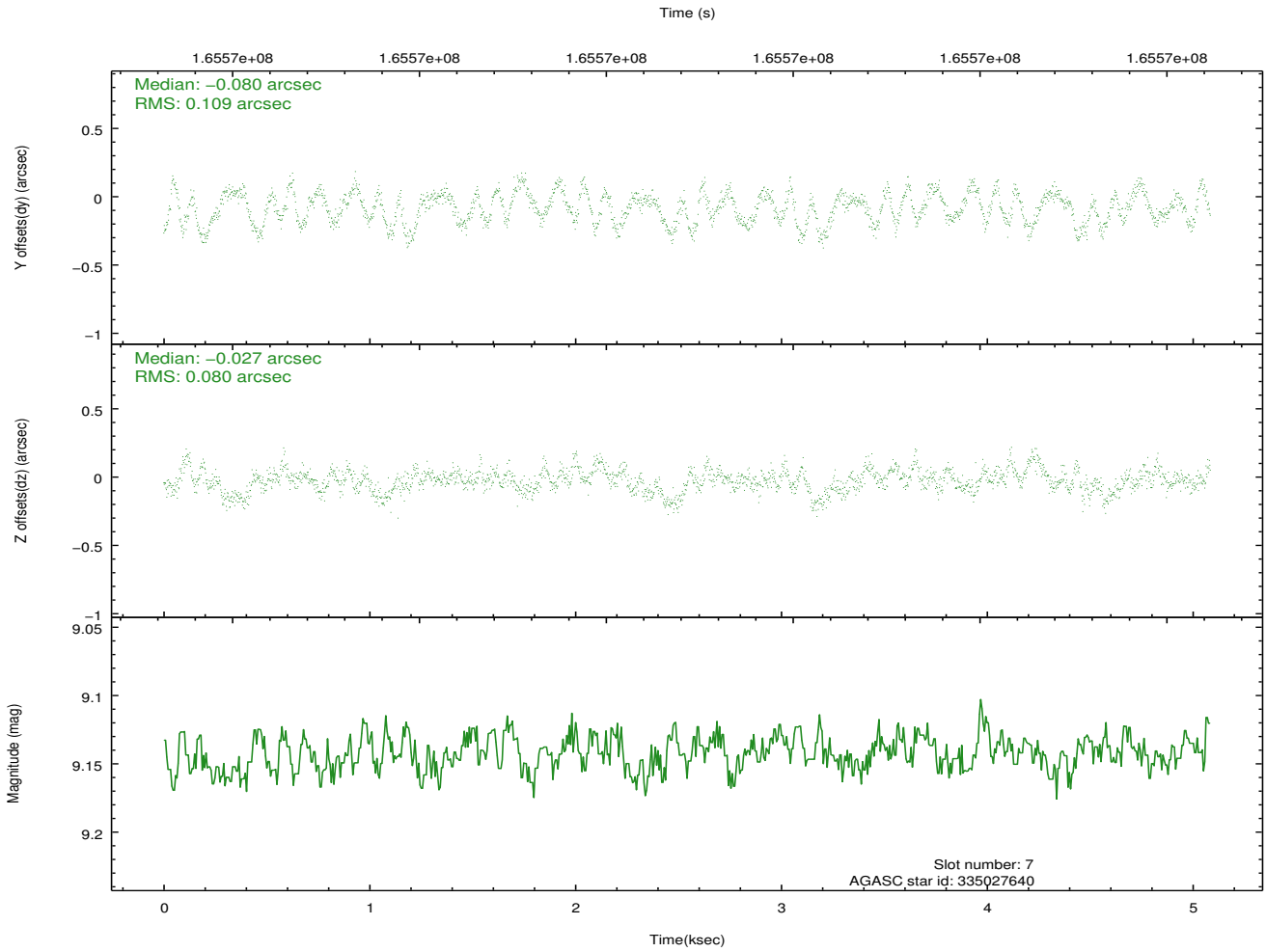
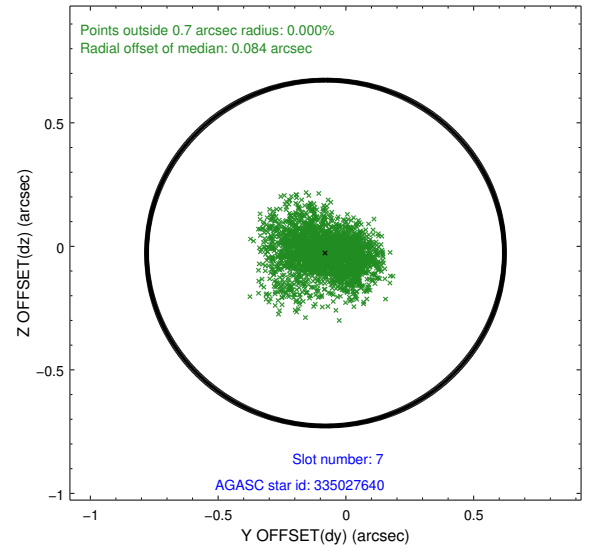
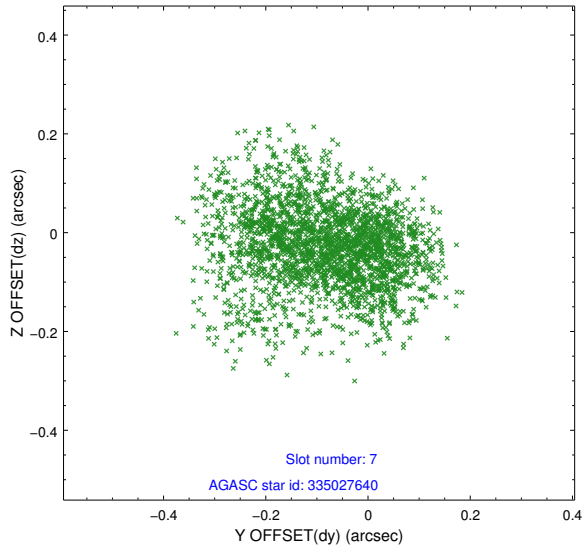


## 2.4.4 Slot 6



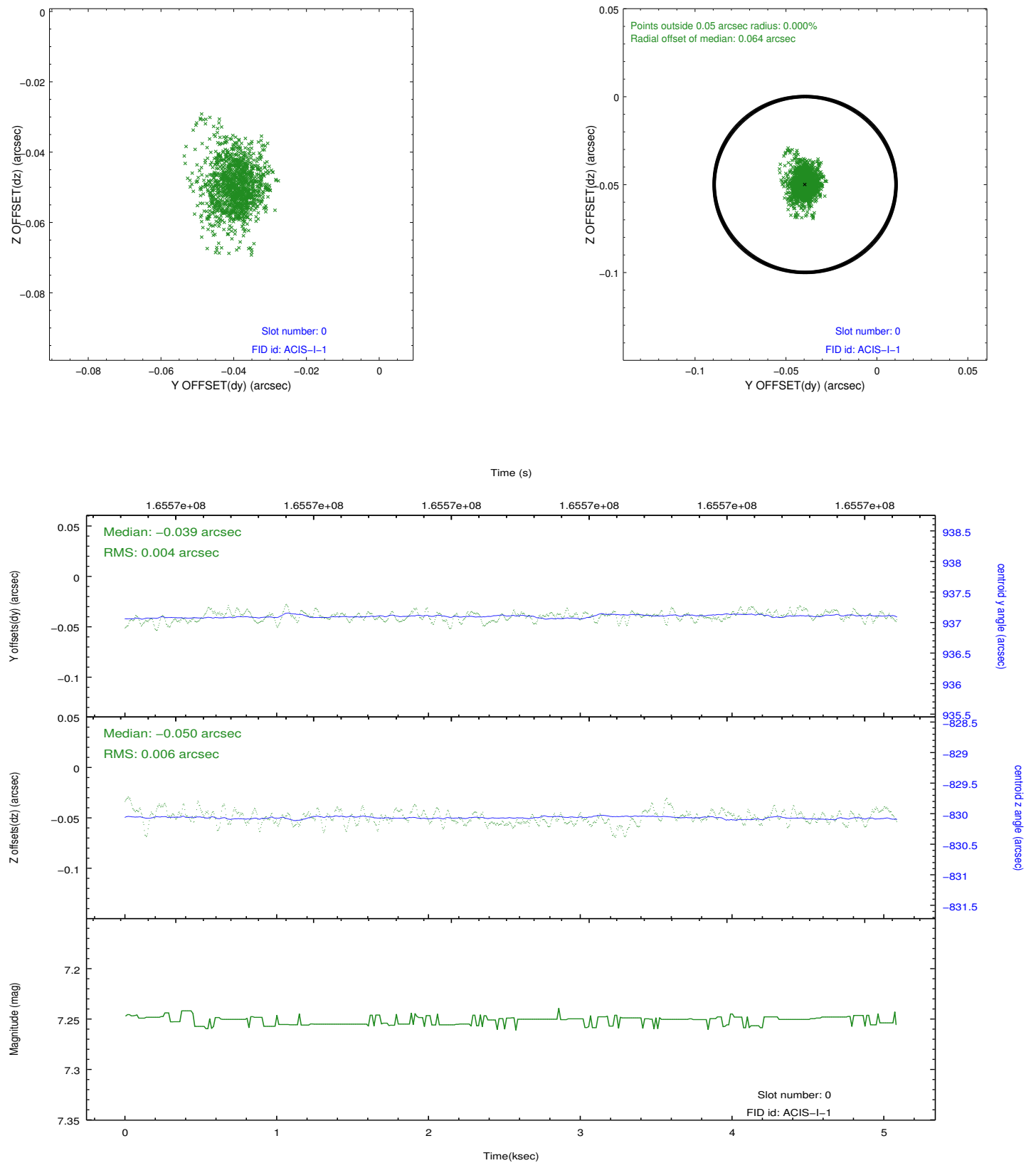


## 2.4.5 Slot 7

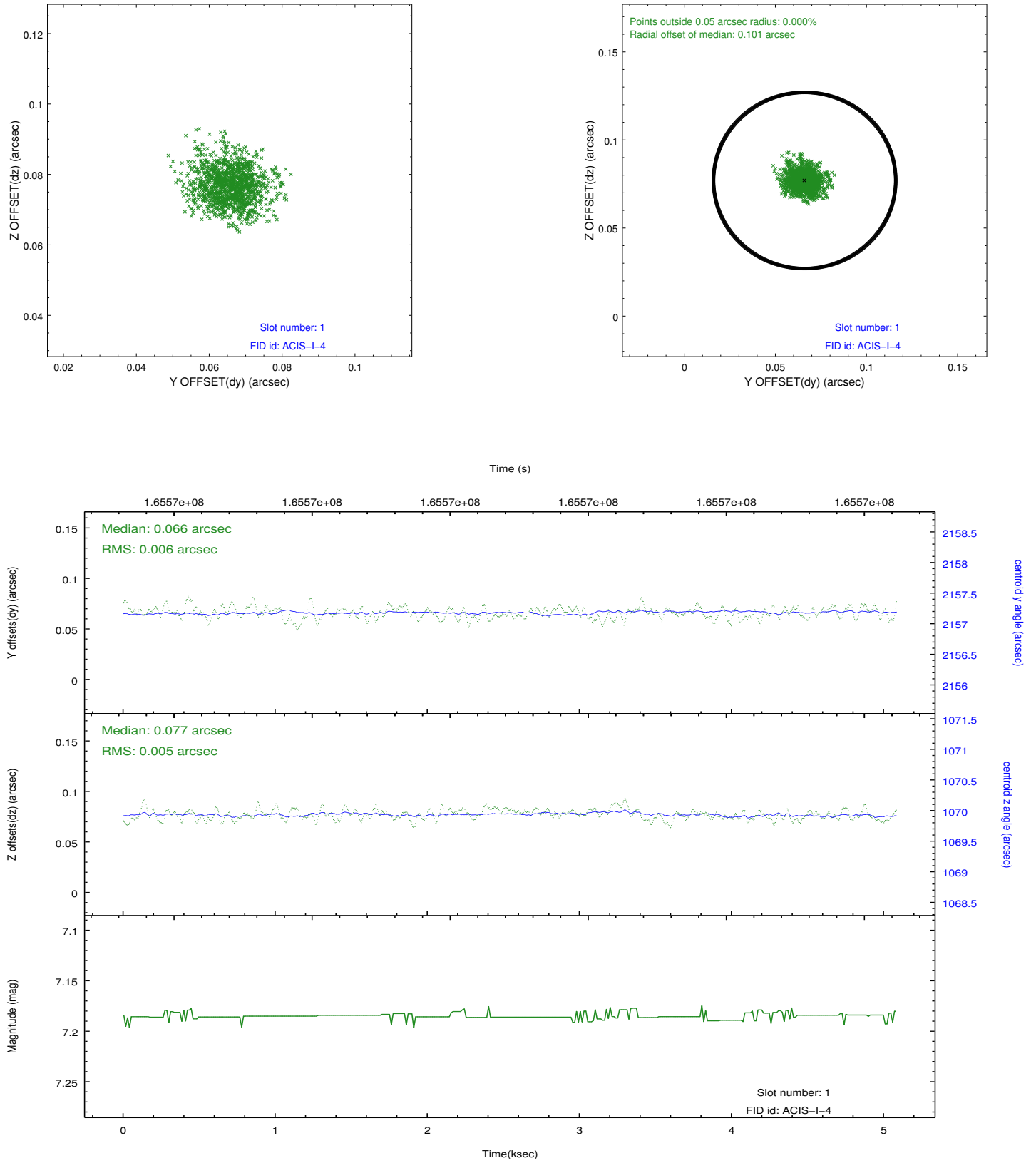


## 2.5 FID Slots

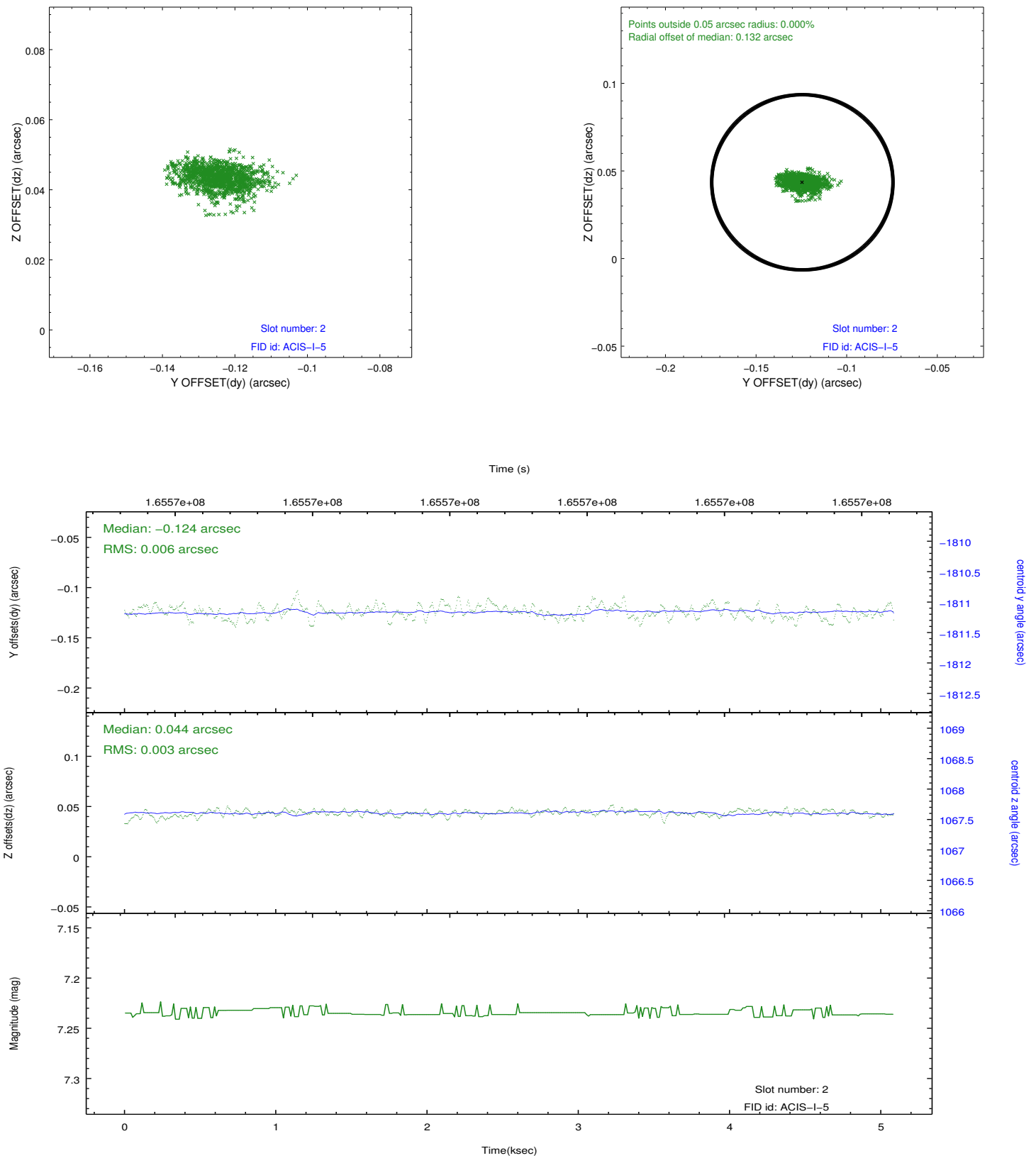
### 2.5.1 Slot 0



## 2.5.2 Slot 1



### 2.5.3 Slot 2



## A Summary

### A.1 Status

V&V Scientist	Jen Lauer
V&V Date (YYYY-MM-DD)	2012.11.09
V&V Edition	1
V&V Disposition and Status	OK
V&V Charge Time	4.674

### A.2 Comments