

V&V Reference Report

L2 ASCDS Version : 8.4.5

Observation 4151 - L2 Version 3
Chandra X-Ray Center

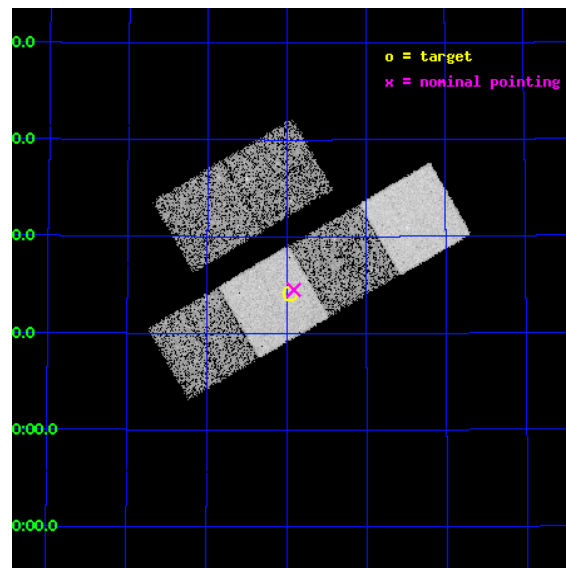
L2 Processing Date : Oct 21 2012

Contents

1	Front	2
2	OBI	3
2.1	OBI	3
2.1.1	Images	3
2.1.2	Bias	3
2.1.3	Parameters	4
2.1.4	Events	4
2.2	Compared Parameters	5
2.3	Aspect	6
2.4	Star Slots	9
2.4.1	Slot 3	9
2.4.2	Slot 4	10
2.4.3	Slot 5	11
2.4.4	Slot 6	12
2.4.5	Slot 7	13
2.5	FID Slots	14
2.5.1	Slot 0	14
2.5.2	Slot 1	15
2.5.3	Slot 2	16
A	Summary	17
A.1	Status	17
A.2	Comments	17

1 Front

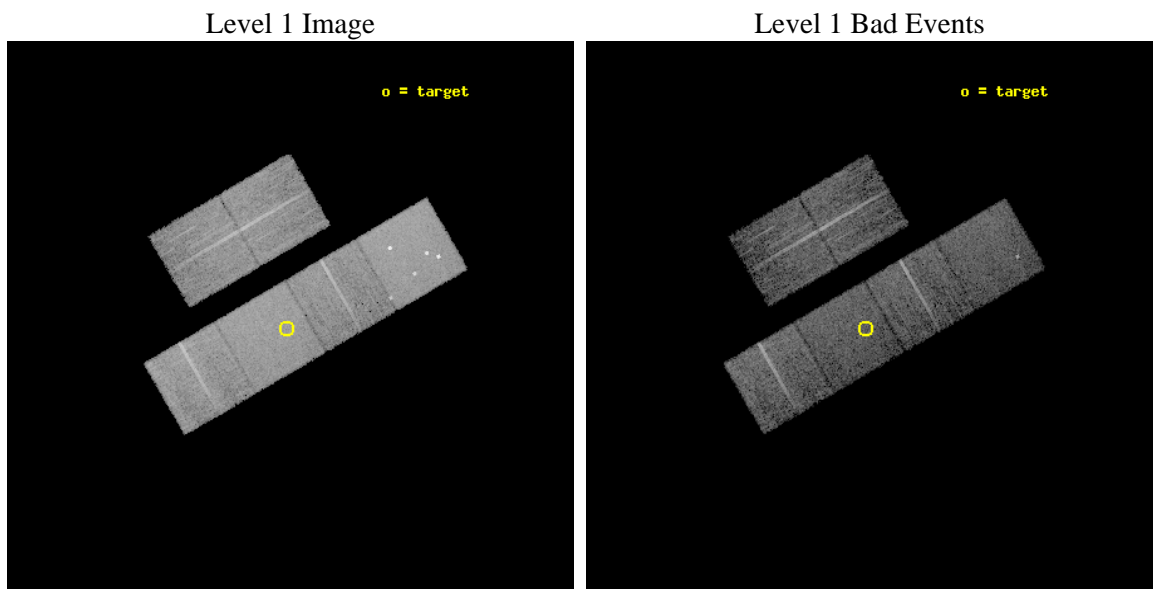
seq_num	700830	Sequence number
obs_id	4151	Observation id
title	X-RAY TRACE OF THE EARLY RISE OF THE QUASAR POPULATION	Proposal ti
observer	Dr. Takamitsu Miyaji	Principal investigator
object	PC 0947+5628	Source name
dtcycle	0	
cycle	P	events from which exps? Prim/Second/Both
ra_targ	147.740833	Observer's specified target RA [deg]
dec_targ	56.235833	Observer's specified target Dec [deg]
ra_nom	147.72754705036	Nominal RA [deg]
dec_nom	56.242035970592	Nominal Dec [deg]
roll_nom	149.85704013183	Nominal Roll [deg]
revision	3	Processing version of data
ontime	8963.1999666095	Sum of GTIs [s]
livetime	8849.7025316412	Livetime [s]
ontime2	8963.1999666095	Sum of GTIs [s]
ontime3	8963.1999666095	Sum of GTIs [s]
ontime5	8963.1999666095	Sum of GTIs [s]
ontime6	8963.1999666095	Sum of GTIs [s]
ontime7	8963.1999666095	Sum of GTIs [s]
ontime8	8963.1999666095	Sum of GTIs [s]
l2events	85588	Number of level 2 events



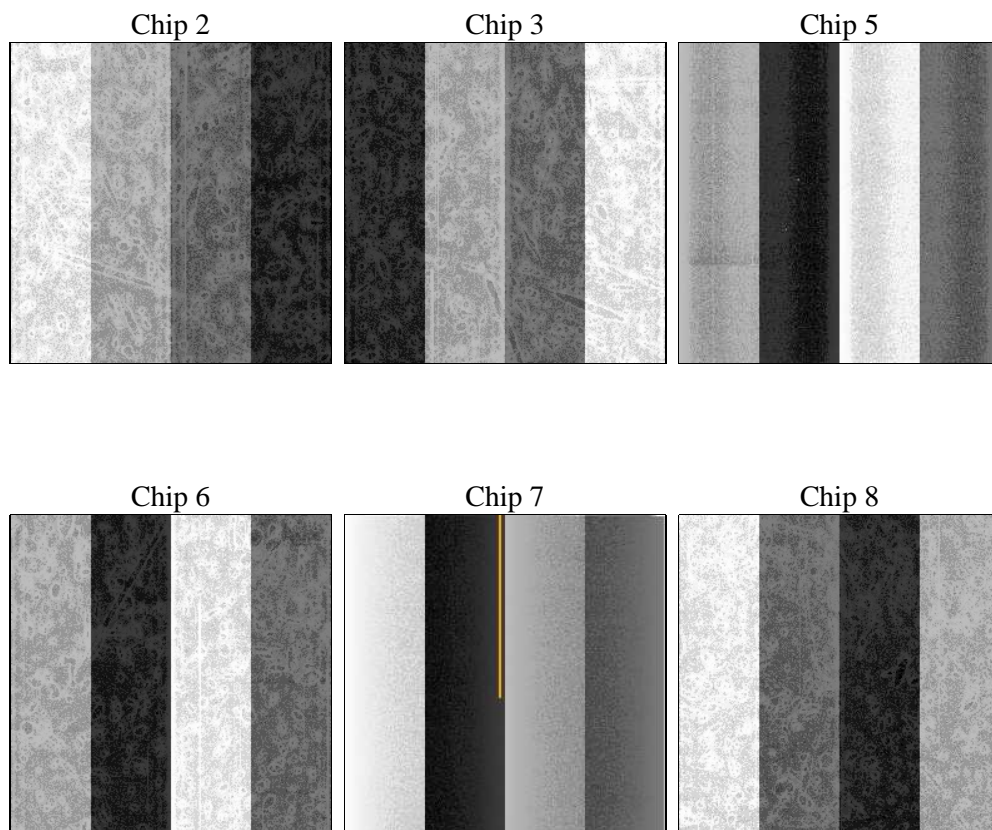
2 OBI

2.1 OBI

2.1.1 Images



2.1.2 Bias



2.1.3 Parameters

obi_num	0	Obi number	sched_exp_time	9000.000000	[s] Scheduled observation exposure time
ascdsver	8.4.5	Processing system revision	ontime	8963.1999666095	Sum of GTIs [s]
caldsver	4.5.2	 	ontime2	8963.1999666095	Sum of GTIs [s]
date	2012-10-21T04:58:03	Date and time of file creation	ontime3	8963.1999666095	Sum of GTIs [s]
revision	3	Processing version of data	ontime5	8963.1999666095	Sum of GTIs [s]
			ontime6	8963.1999666095	Sum of GTIs [s]
			ontime7	8963.1999666095	Sum of GTIs [s]
			ontime8	8963.1999666095	Sum of GTIs [s]
			l1events	389720	Number of level 1 events

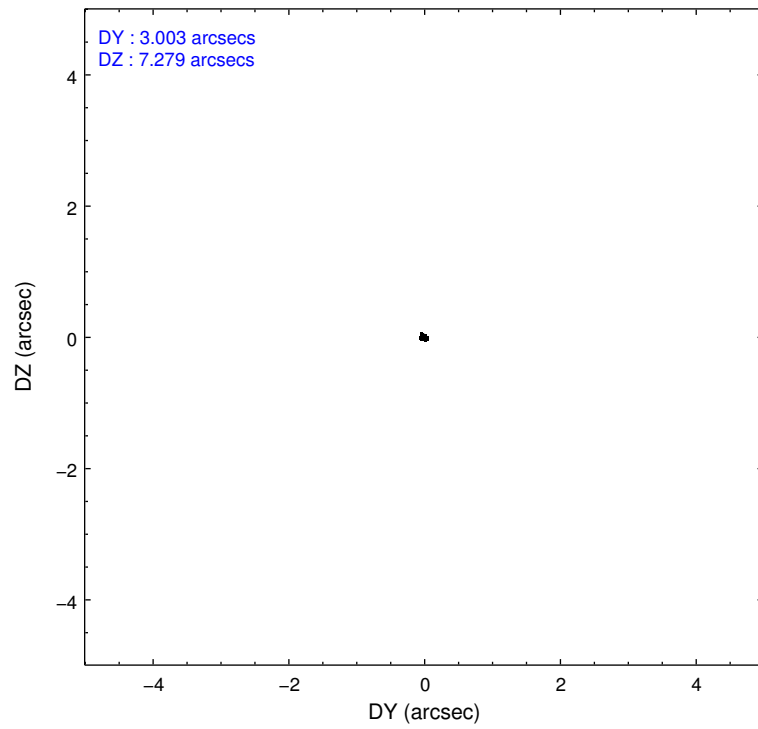
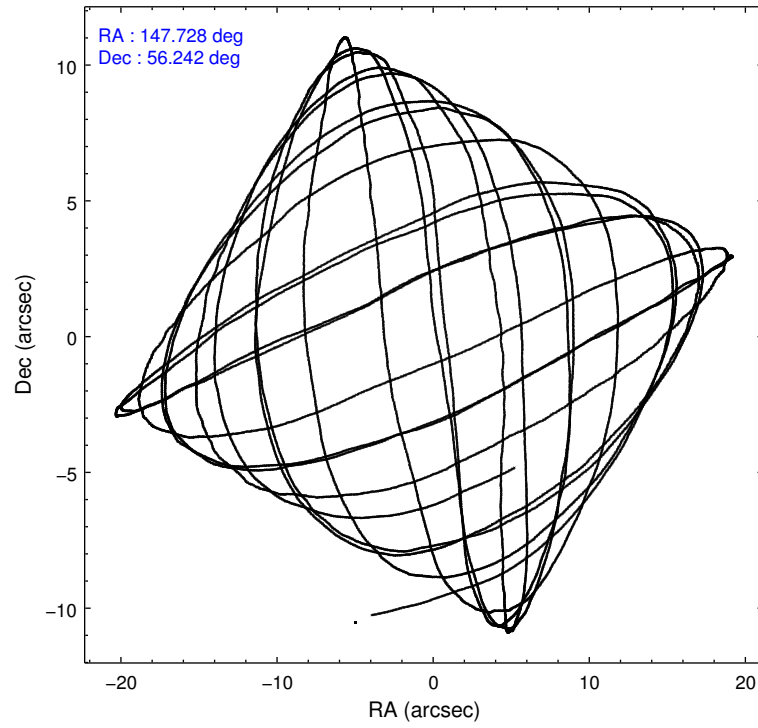
2.1.4 Events

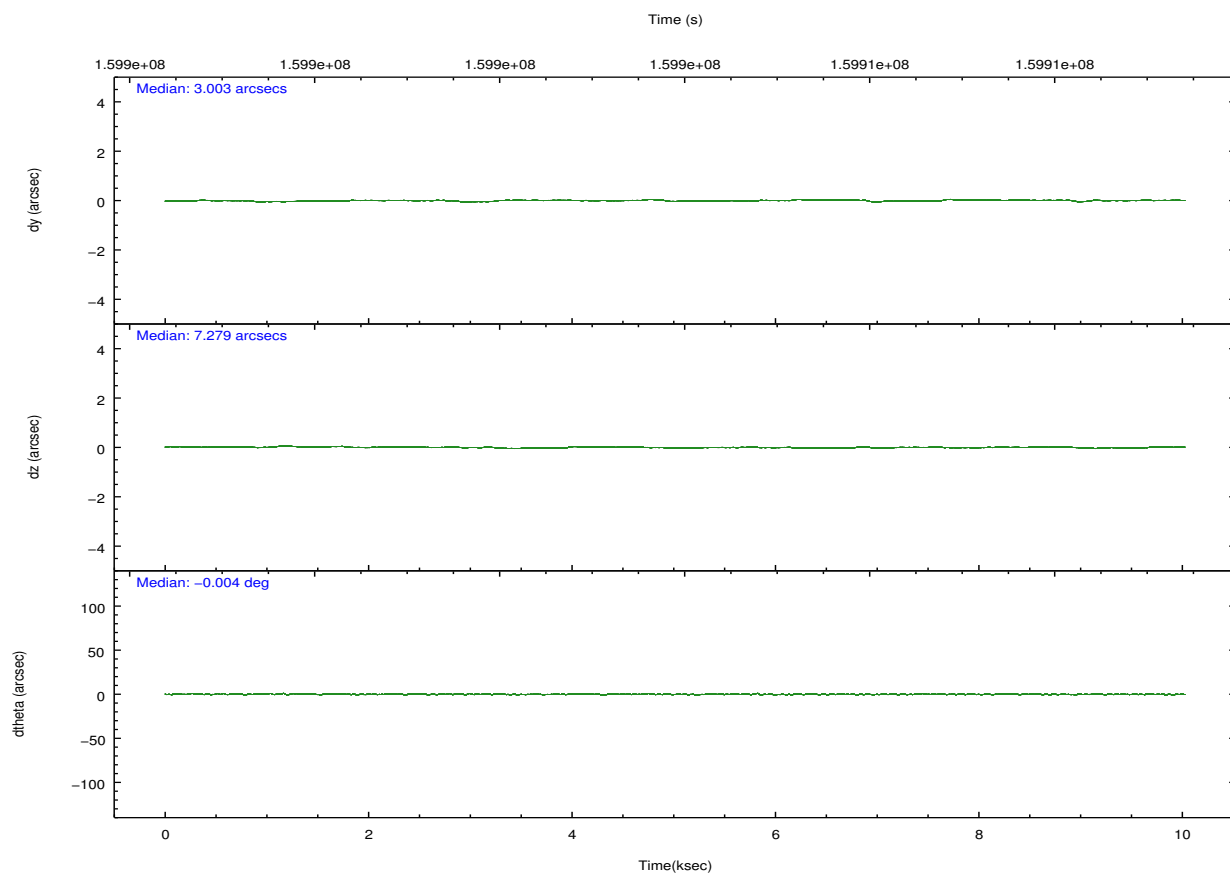
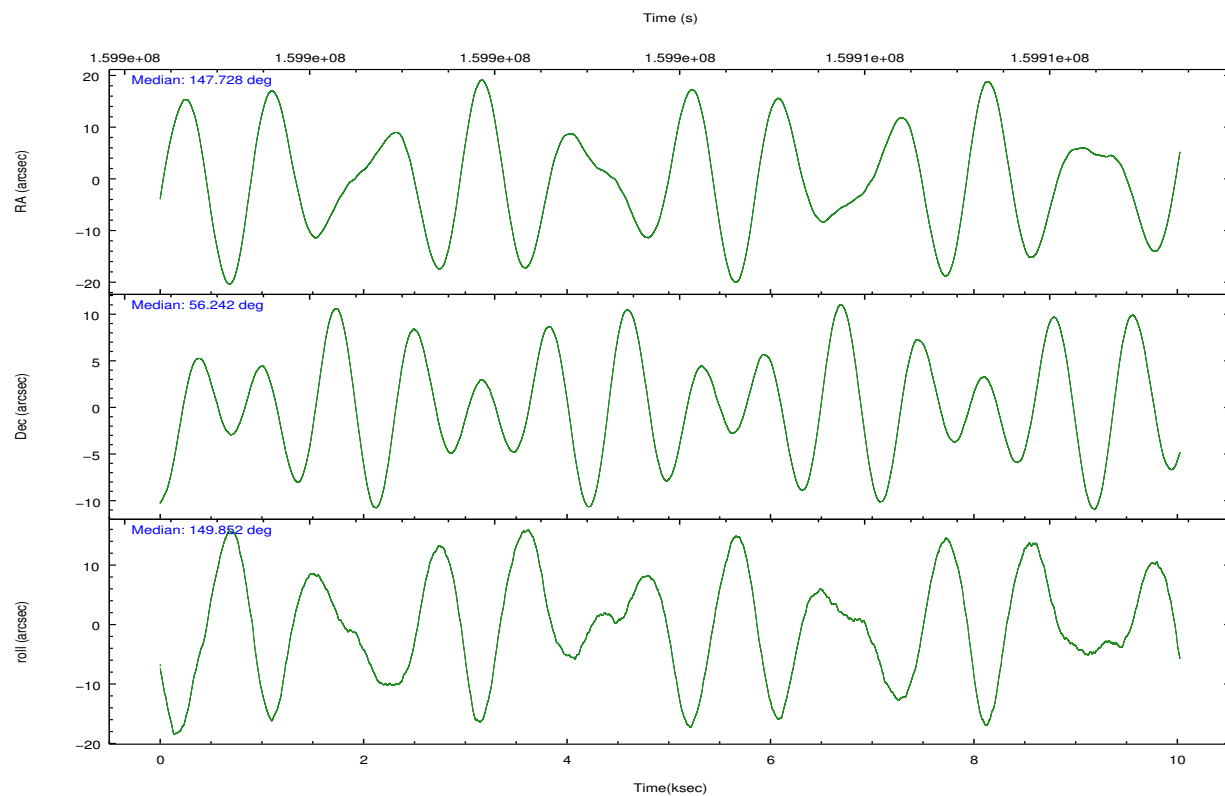
	ccd 2	ccd 3	ccd 5	ccd 6	ccd 7	ccd 8		ccd 2	ccd 3	ccd 5	ccd 6	ccd 7	ccd 8
level 1 events	56692	52473	85858	54606	71928	68163	grade 0 events	2884	2778	9261	2505	2674	4233
rejected events	50284	46284	43676	48200	42475	54824		5%	5%	10%	4%	3%	6%
rejected %	88%	88%	50%	88%	59%	80%	grade 1 events	25	33	500	26	57	49
								0%	0%	0%	0%	0%	0%
							grade 2 events	1234	1138	11105	1317	5702	2943
								2%	2%	12%	2%	7%	4%
							grade 3 events	617	606	1336	637	2643	1420
								1%	1%	1%	1%	3%	2%
							grade 4 events	597	641	1359	617	2572	1366
								1%	1%	1%	1%	3%	2%
							grade 5 events	2154	2327	5649	2372	6744	3131
								3%	4%	6%	4%	9%	4%
							grade 6 events	1078	1028	19136	1330	15873	3398
								1%	1%	22%	2%	22%	4%
							grade 7 events	48103	43922	37512	45802	35663	51623
								84%	83%	43%	83%	49%	75%

2.2 Compared Parameters

Parameter	Planned	Actual	Parameter	Planned	Actual
Instrument	ACIS	ACIS	Obspar format version number	7	7
Detector	ACIS-235678	ACIS-235678	Obspar file type	PREDICTED	ACTUAL
Grating	NONE	NONE	Obspar update status	NONE	UPDATED
Data mode	VFAINT	VFAINT	Number of optional ACIS chips dropped	0	0
Observation mode	POINTING	POINTING	On-chip summing requested	N	N
[deg] Pointing RA	147.776559	147.7275470503625	Subarray requested	NONE	NONE
[deg] Pointing Dec	56.242369	56.24203597059225	Alternating exposures requested	N	N
[deg] Pointing Roll	149.659663	149.8570401318256	[s] Primary exposure time	0.000000	3.2
[mm] SIM focus pos	-0.684267	-0.6828225247311905			
[mm] SIM defocus	0	0.001444936568705701			
[mm] SIM translation stage pos	-190.132523	-190.1400660498719			
[mm] SIM translation stage offset	0	0.00754346686406393			
[s] Observation start time (MET)	159899907.184000	159898524.76899			
Observation start date	2003-01-25T16:37:23	2003-01-25T16:15:24			
[s] Observation end time (MET)	159908907.184000	159909197.58193			
Observation end date	2003-01-25T19:07:23	2003-01-25T19:13:17			
Read mode	TIMED	TIMED			

2.3 Aspect



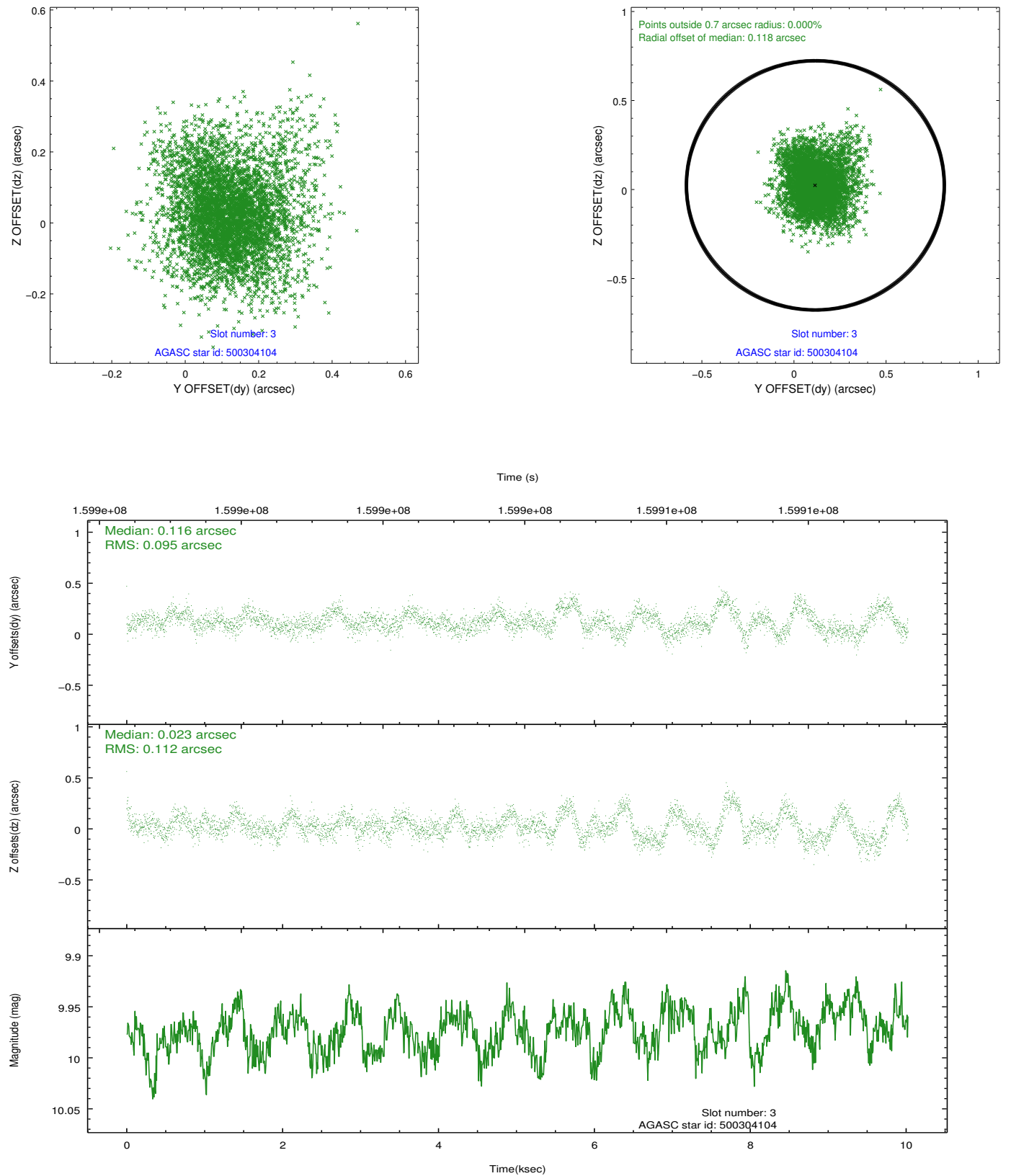


Slot Statistics

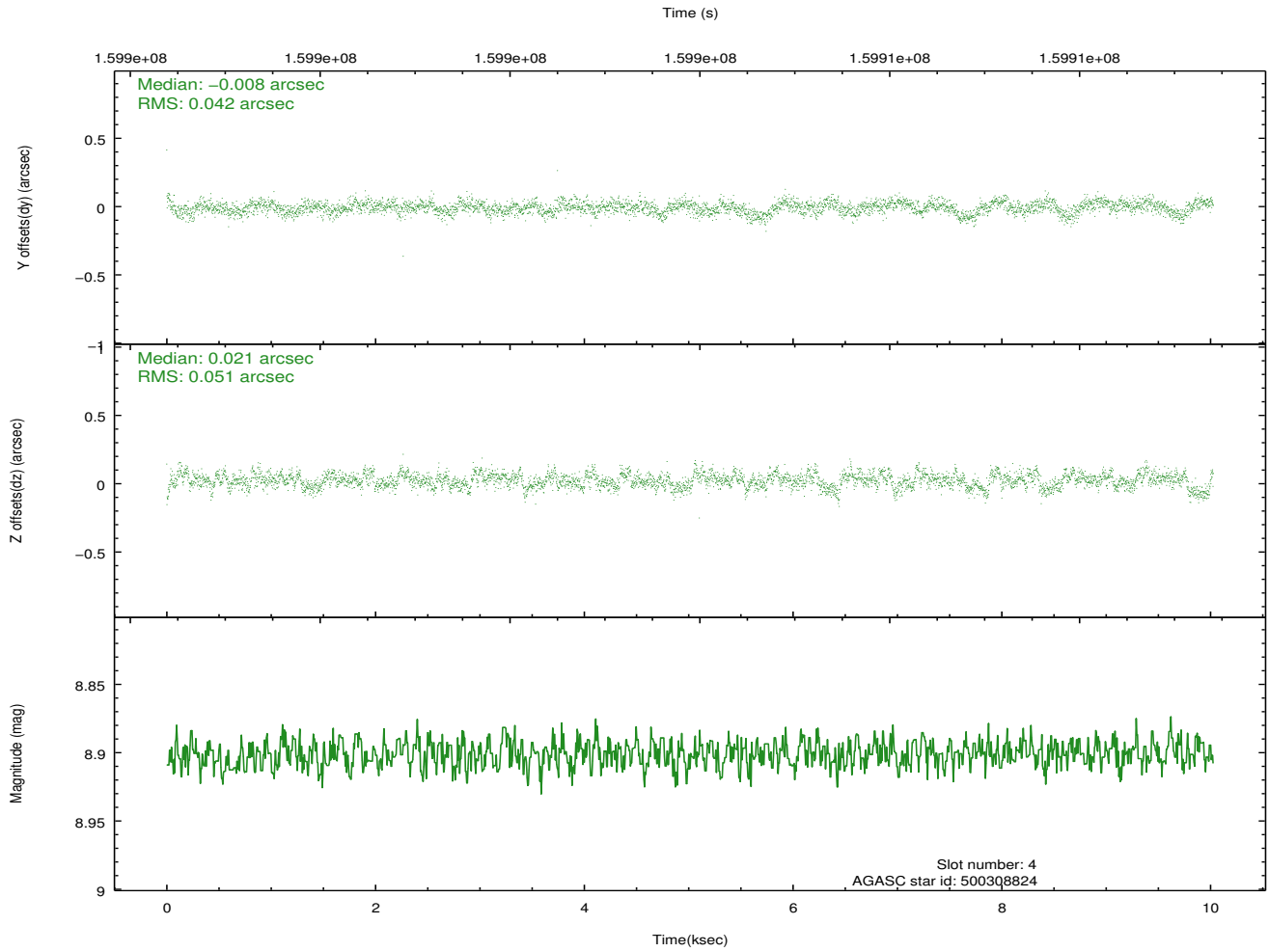
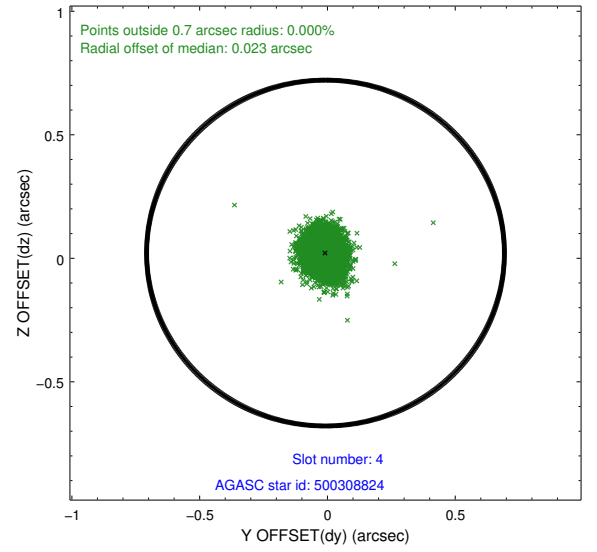
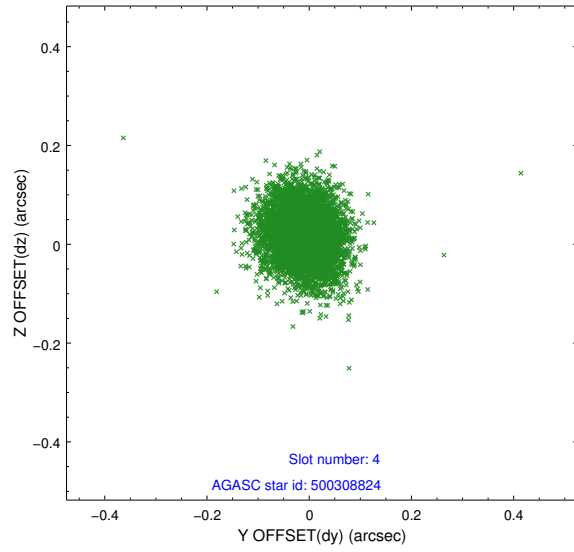
slot	status	id	mag	n_pts	med_dy	med_dz	dr1	dr2	ra	dec	mean_y	mean_z
0	FID	ACIS-S-2	7.12	2446	-0.024	-0.011	0.007	0.011	0.000000	0.000000	-755.66	-1728.46
1	FID	ACIS-S-4	7.20	2446	0.011	0.015	0.005	0.010	0.000000	0.000000	2157.41	179.51
2	FID	ACIS-S-5	7.24	2446	-0.018	0.005	0.007	0.010	0.000000	0.000000	-1807.82	173.76
3	GUIDE	500304104	9.97	4884	0.116	0.023	0.153	0.264	148.137679	56.426588	-284.11	-937.03
4	GUIDE	500308824	8.90	4892	-0.008	0.021	0.070	0.112	148.561668	56.446939	-971.44	-1432.54
5	GUIDE	500313088	8.61	4892	0.004	0.119	0.071	0.114	148.648854	56.088054	-1787.00	-415.30
6	GUIDE	500313496	9.71	4887	-0.056	-0.085	0.135	0.224	146.803644	55.812712	923.73	2317.08
7	GUIDE	500314984	9.68	4888	-0.056	-0.076	0.113	0.183	147.165650	55.801770	268.50	1989.13

2.4 Star Slots

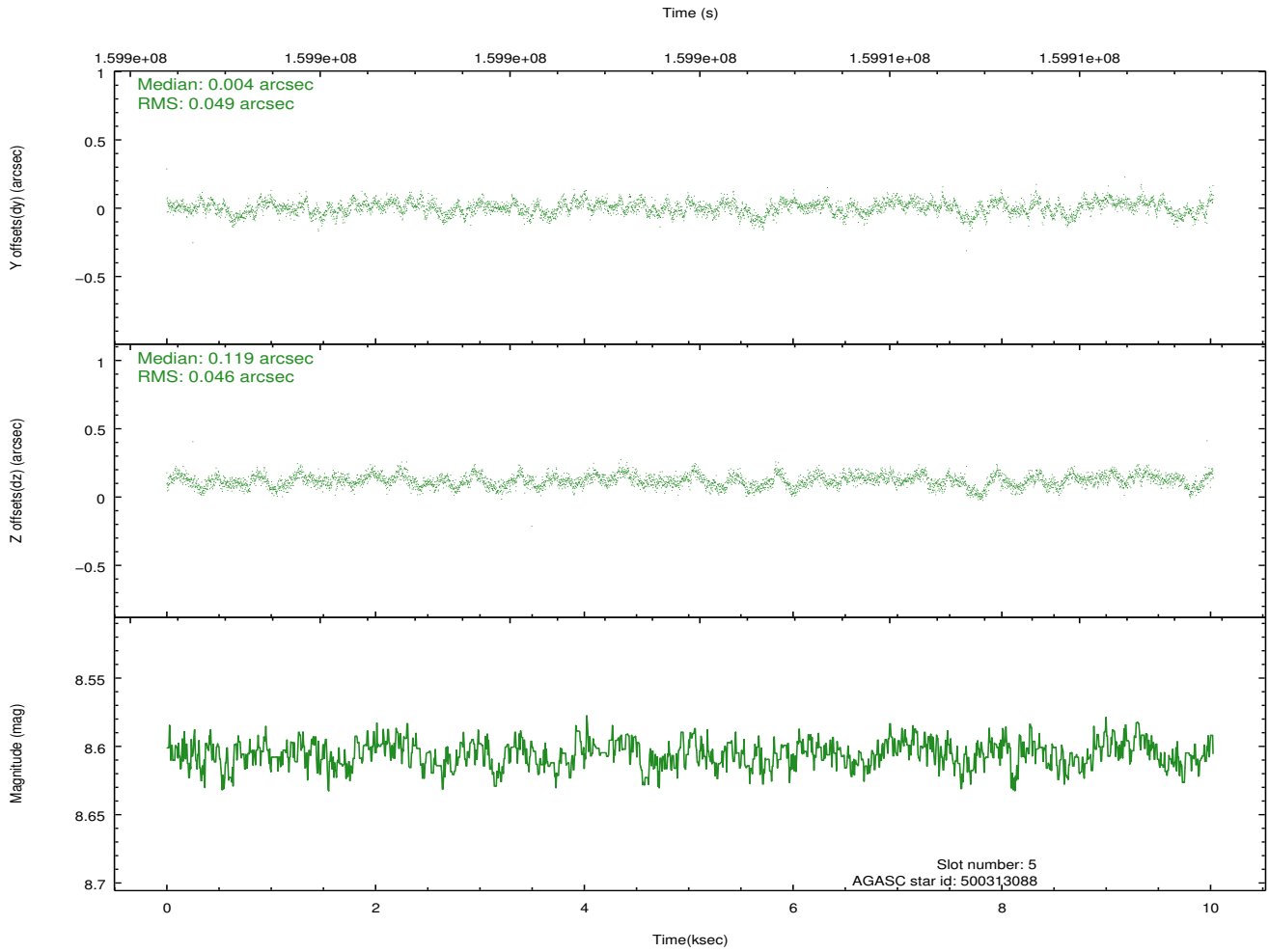
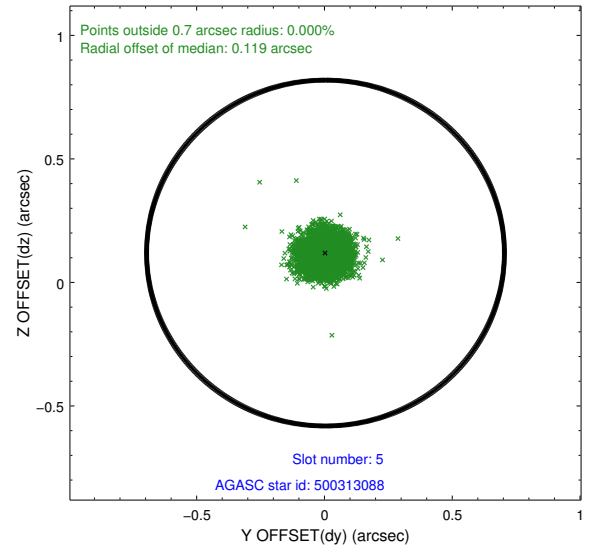
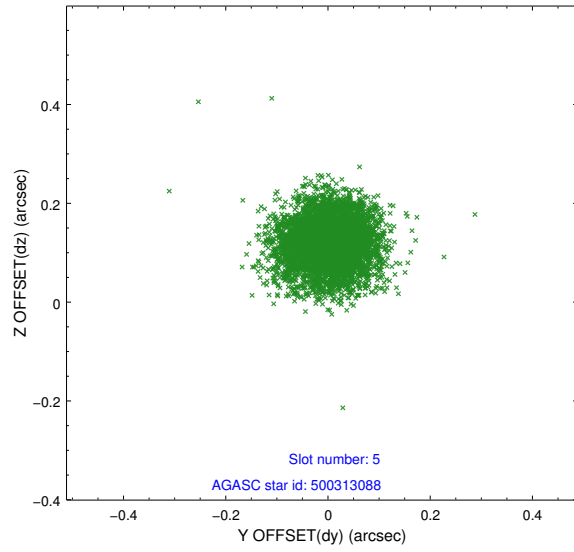
2.4.1 Slot 3



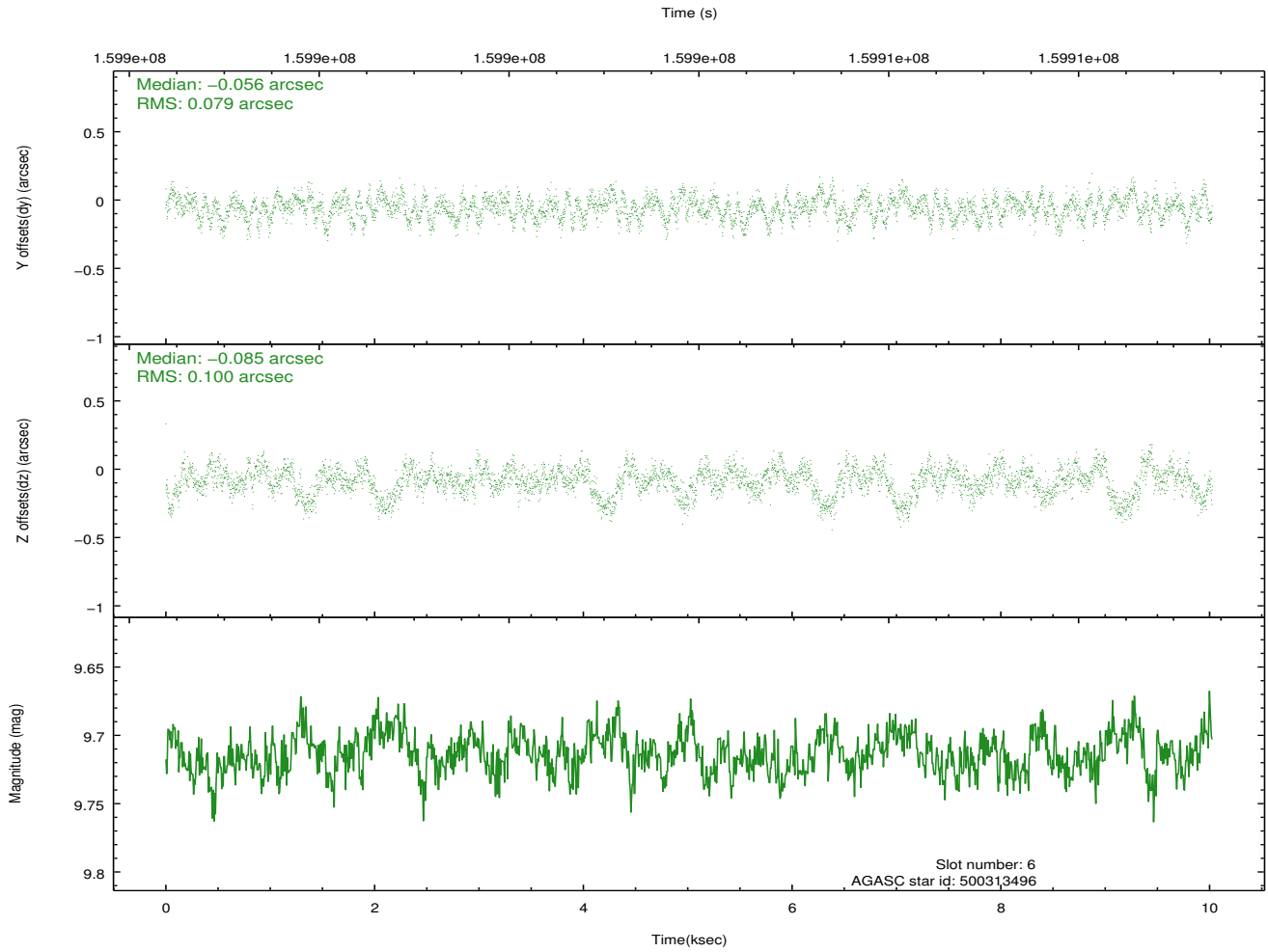
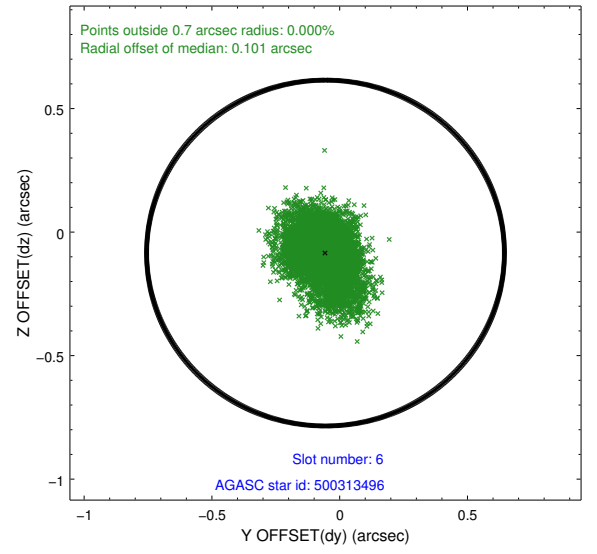
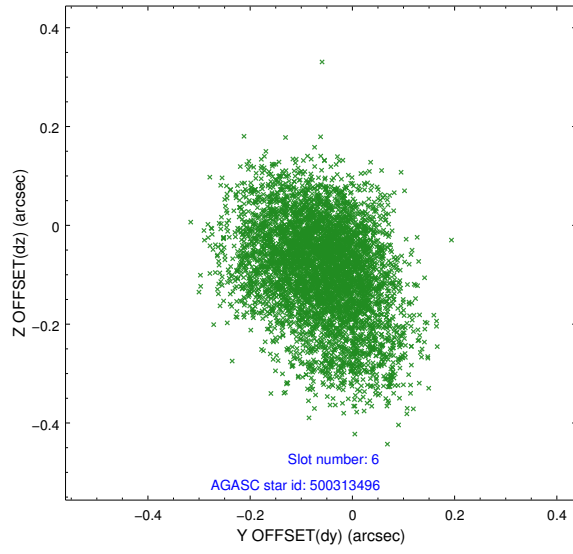
2.4.2 Slot 4



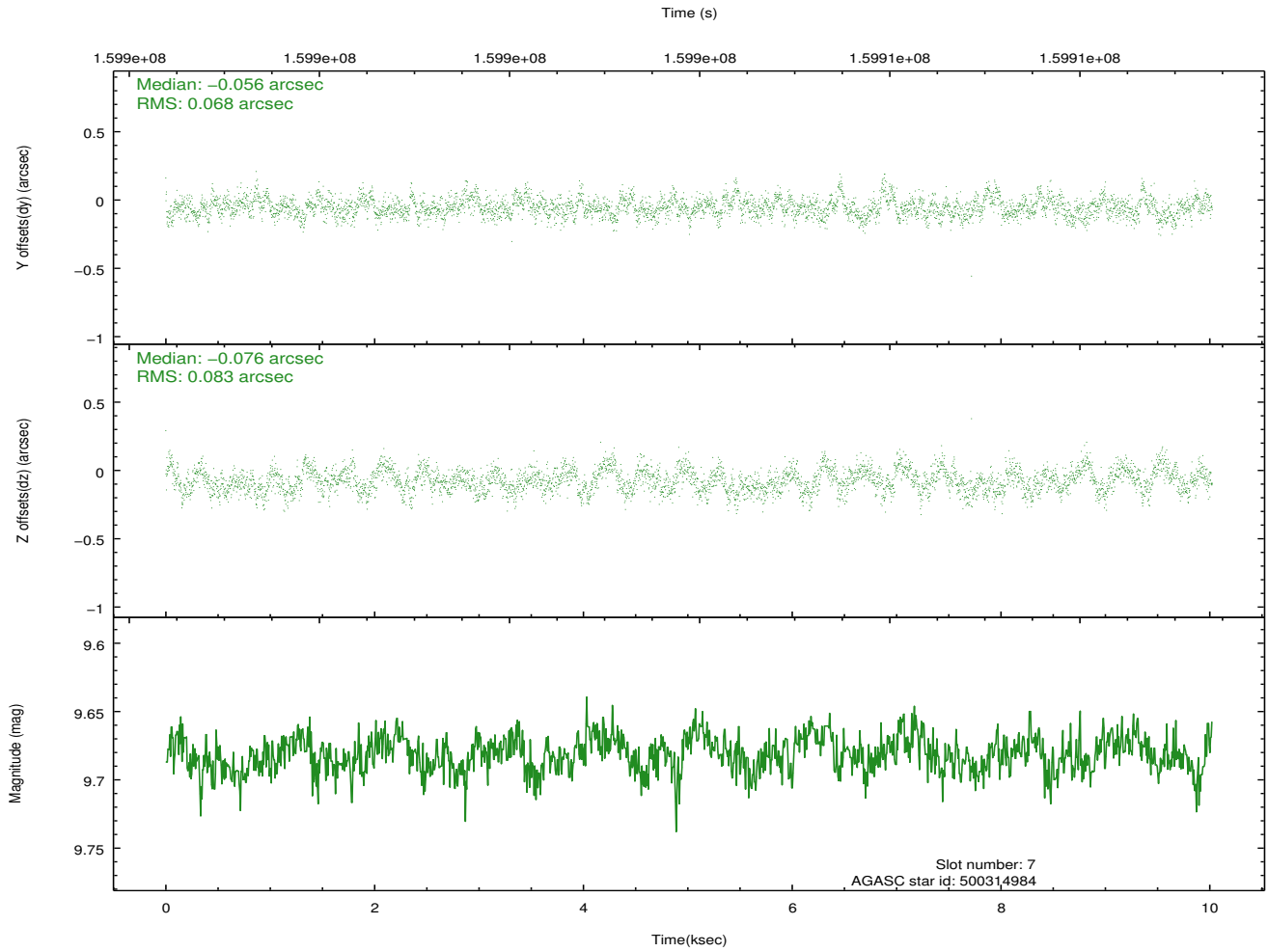
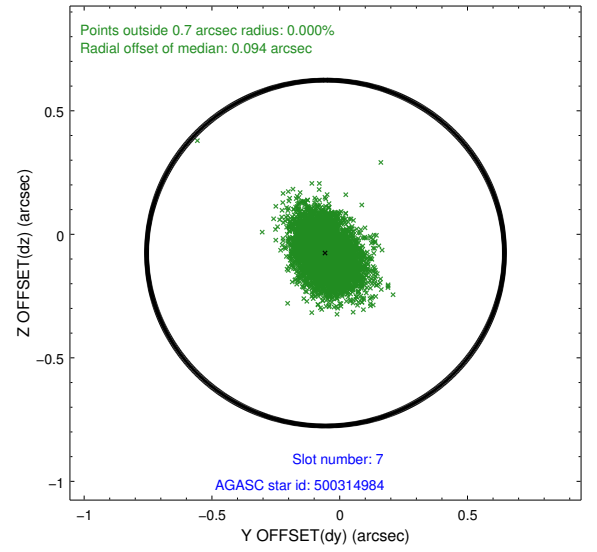
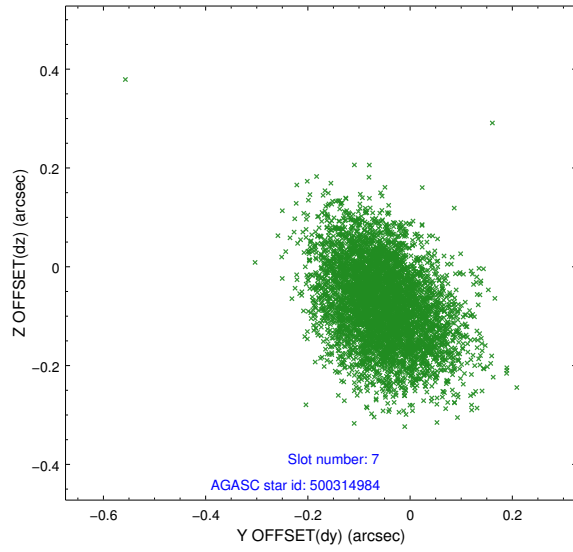
2.4.3 Slot 5



2.4.4 Slot 6

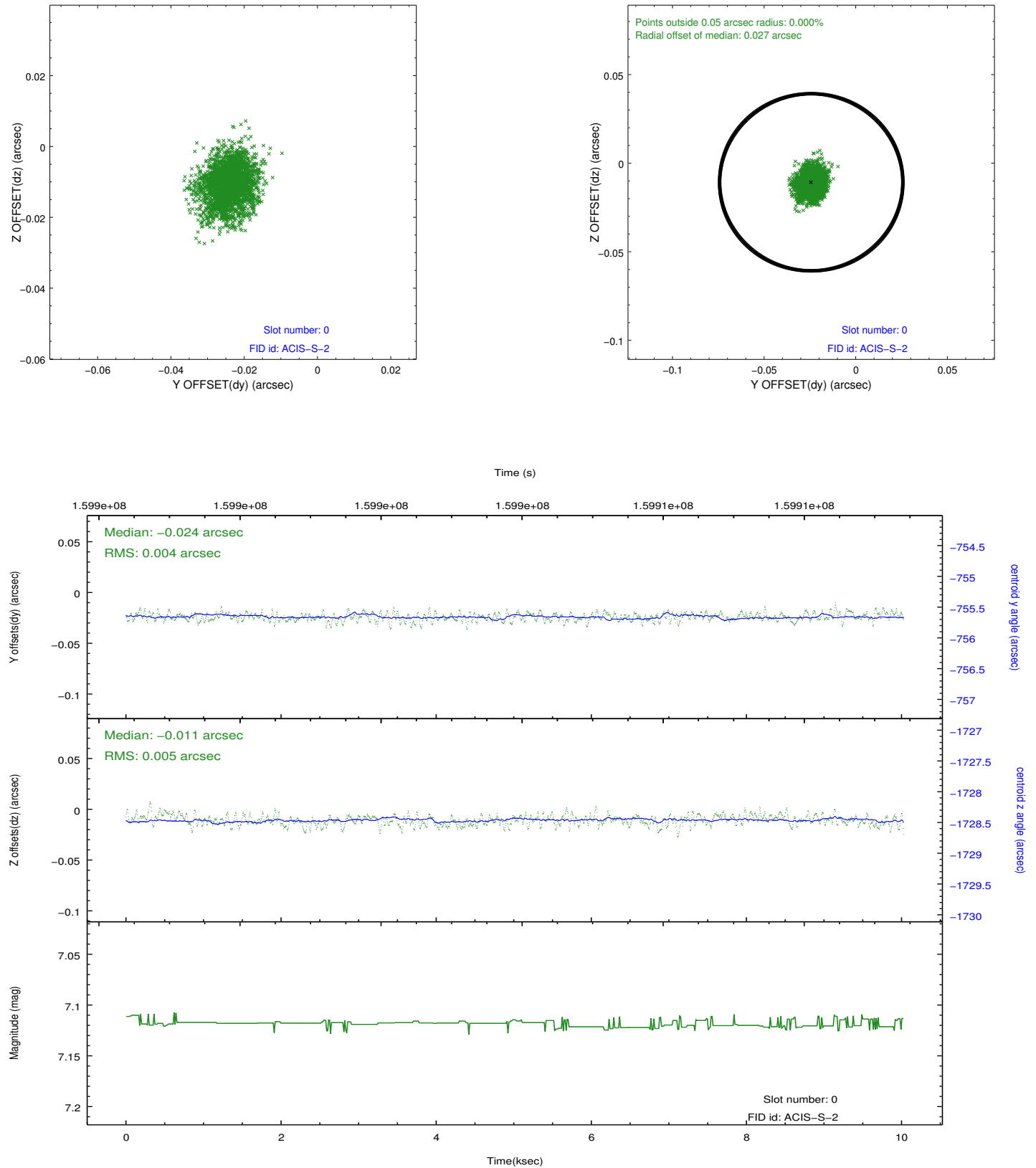


2.4.5 Slot 7

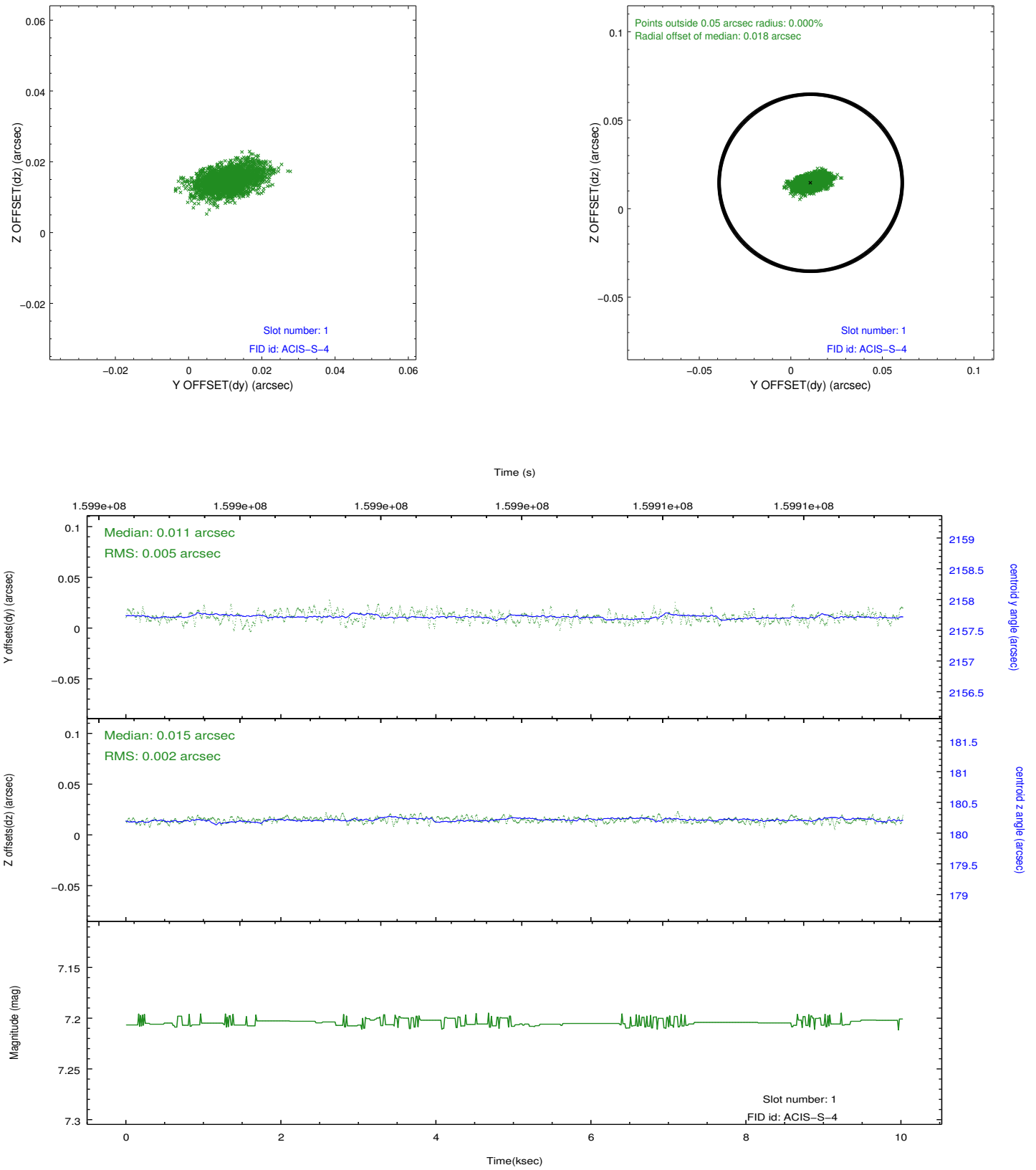


2.5 FID Slots

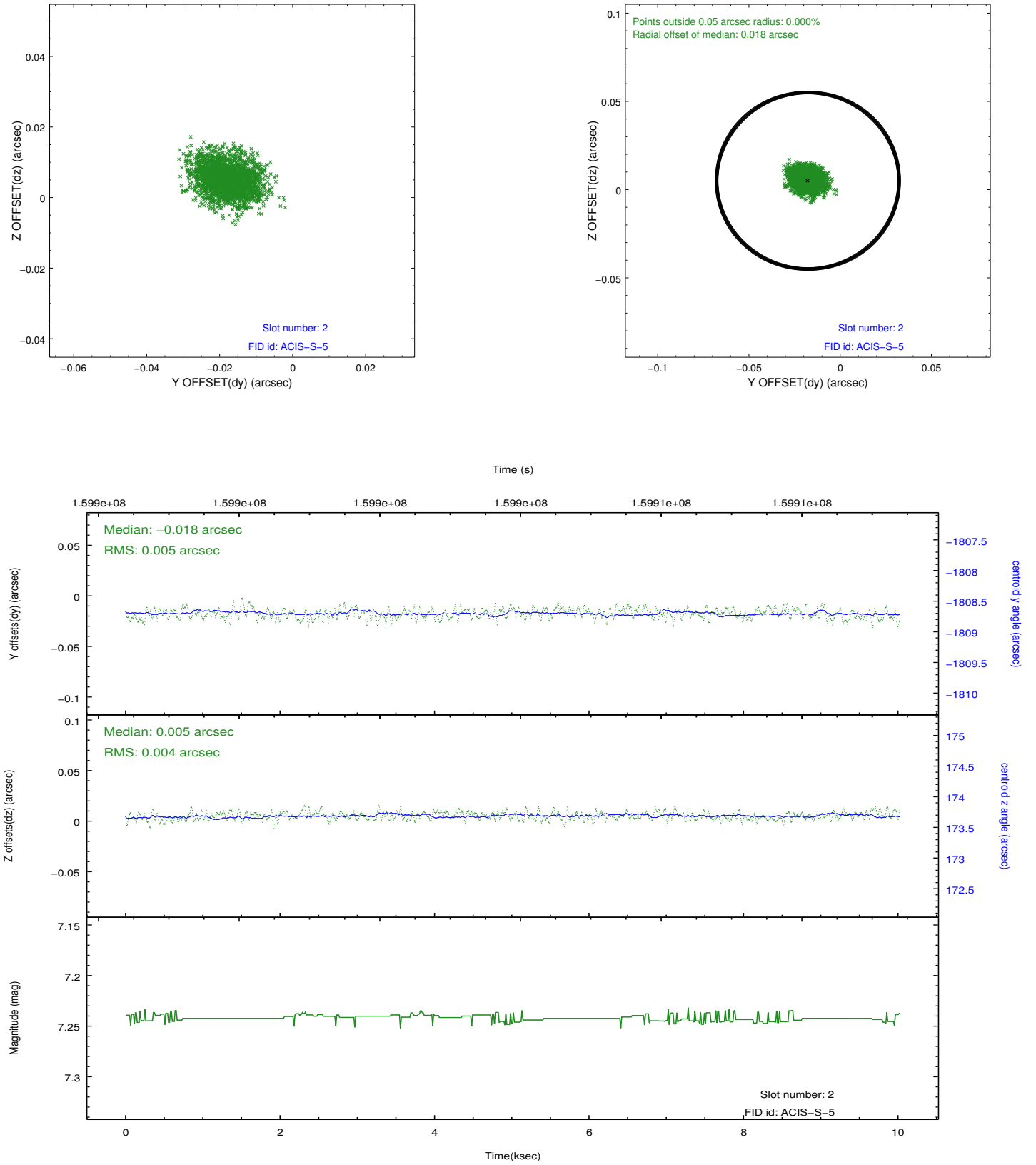
2.5.1 Slot 0



2.5.2 Slot 1



2.5.3 Slot 2



A Summary

A.1 Status

V&V Scientist	Jen Lauer
V&V Date (YYYY-MM-DD)	2012.11.01
V&V Edition	1
V&V Disposition and Status	OK
V&V Charge Time	8.966

A.2 Comments