

V&V Reference Report

L2 ASCDS Version : 7.6.8

Observation 4151 - L2 Version 001
Chandra X-Ray Center

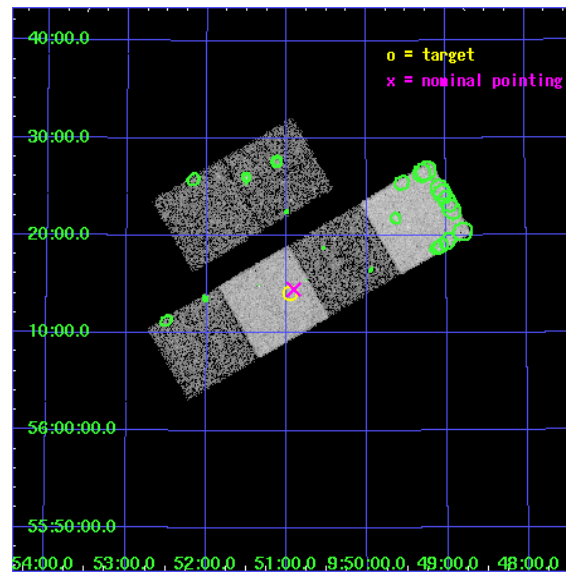
L2 Processing Date : Jul 19 2006

Contents

1	Front	2
2	OBI	3
2.1	OBI	3
2.1.1	Images	3
2.1.2	Bias	3
2.1.3	Parameters	4
2.1.4	Events	4
2.2	Compared Parameters	5
2.3	Aspect	6
2.4	Star Slots	9
2.4.1	Slot 3	9
2.4.2	Slot 4	10
2.4.3	Slot 5	11
2.4.4	Slot 6	12
2.4.5	Slot 7	13
2.5	FID Slots	14
2.5.1	Slot 0	14
2.5.2	Slot 1	15
2.5.3	Slot 2	16
3	Point Sources	17
A	Summary	18
A.1	Status	18
A.2	Comments	18

1 Front

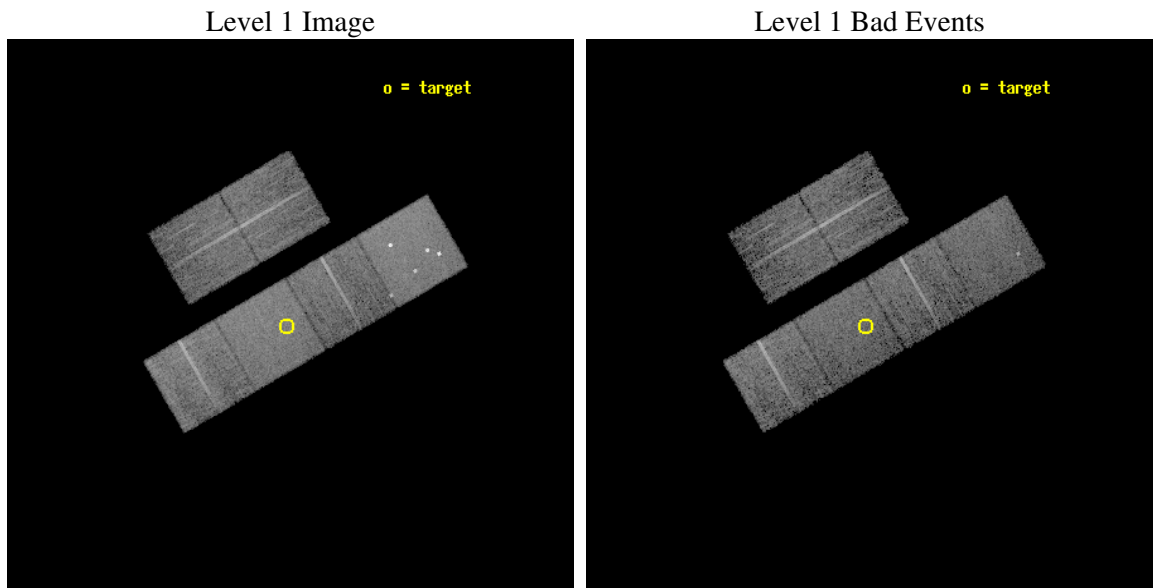
seq_num	700830
obs_id	4151
title	X-RAY TRACE OF THE EARLY RISE OF THE QUASAR POPULATION
observer	Dr. Takamitsu Miyaji
object	PC 0947+5628
dtcycle	0
cycle	P
ra_targ	147.740833
dec_targ	56.235833
ra_nom	147.72754705036
dec_nom	56.242035970592
roll_nom	149.85704013183
revision	2
ontime	8963.1999666095
livetime	8849.7025316412
ontime2	8963.1999666095
ontime3	8963.1999666095
ontime5	8963.1999666095
ontime6	8963.1999666095
ontime7	8963.1999666095
ontime8	8963.1999666095
l2events	81971



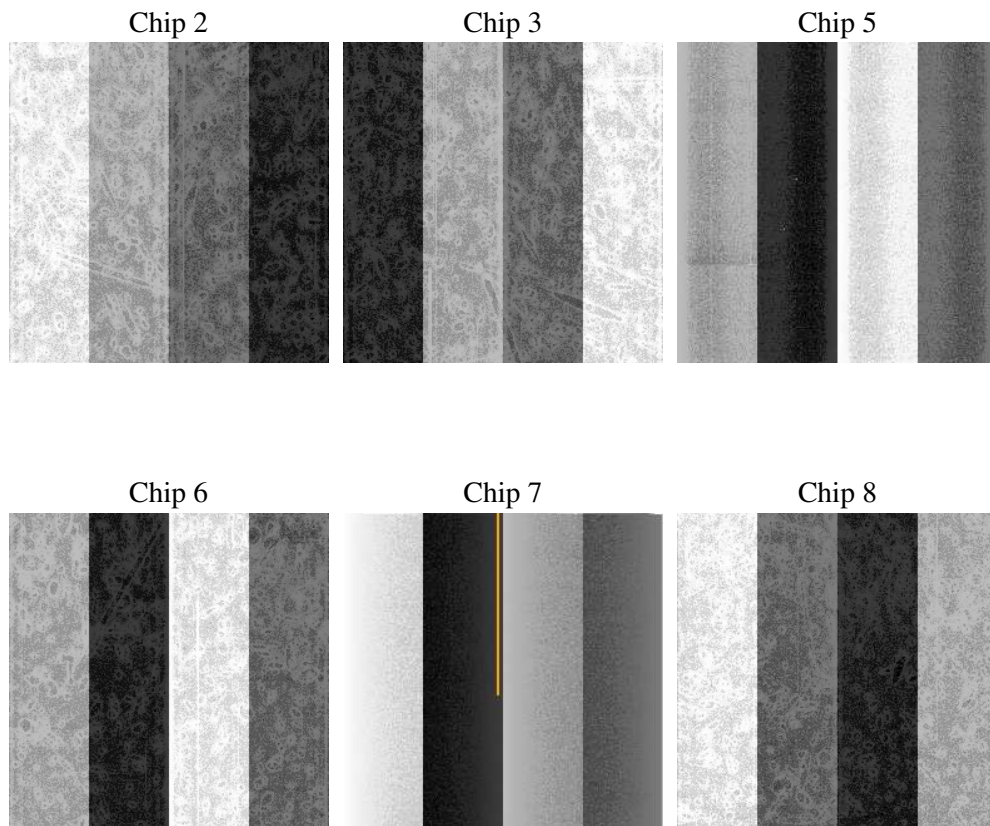
2 OBI

2.1 OBI

2.1.1 Images



2.1.2 Bias



2.1.3 Parameters

obi_num	0
ascdsver	7.6.8
caldbver	3.2.2
date	2006-07-19T10:11:26
revision	2

sched_exp_time	9000.000000
ontime	8967.8715761006
ontime2	8967.8715561926
ontime3	8967.8715761006
ontime5	8967.8715960383
ontime6	8967.8715761006
ontime7	8967.8715761006
ontime8	8967.8715561926
l1events	389720

2.1.4 Events

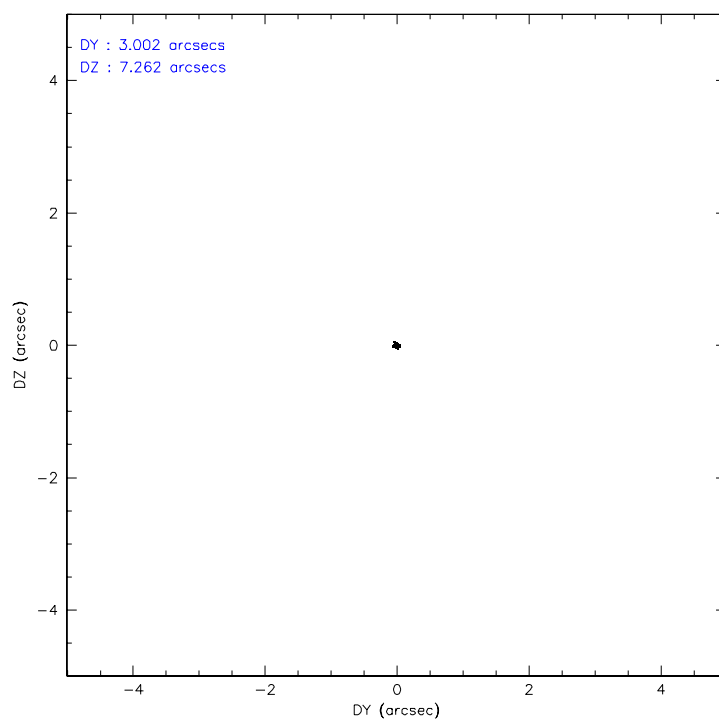
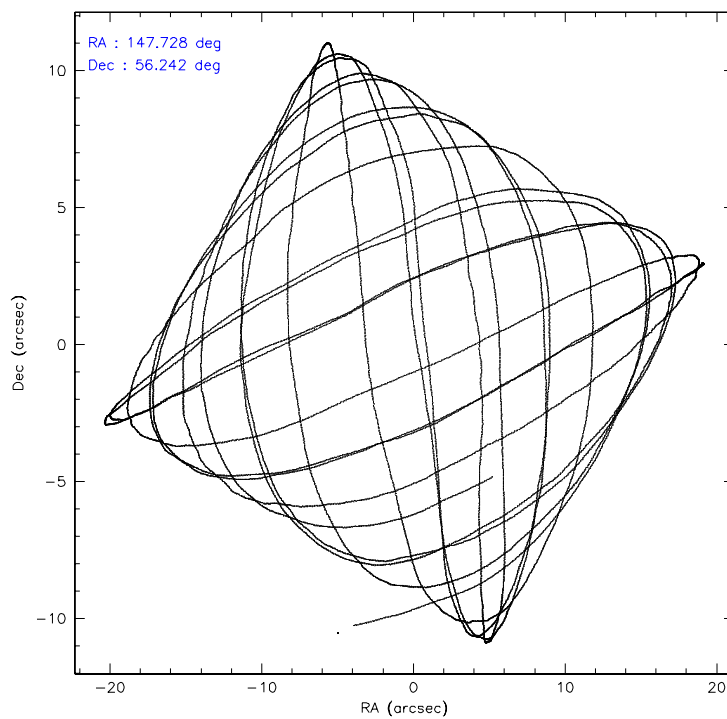
	ccd 2	ccd 3	ccd 5	ccd 6	ccd 7	ccd 8
level 1 events	56692	52473	85858	54606	71928	68163
rejected events	50286	46289	44887	48197	44997	54826
rejected %	88%	88%	52%	88%	62%	80%

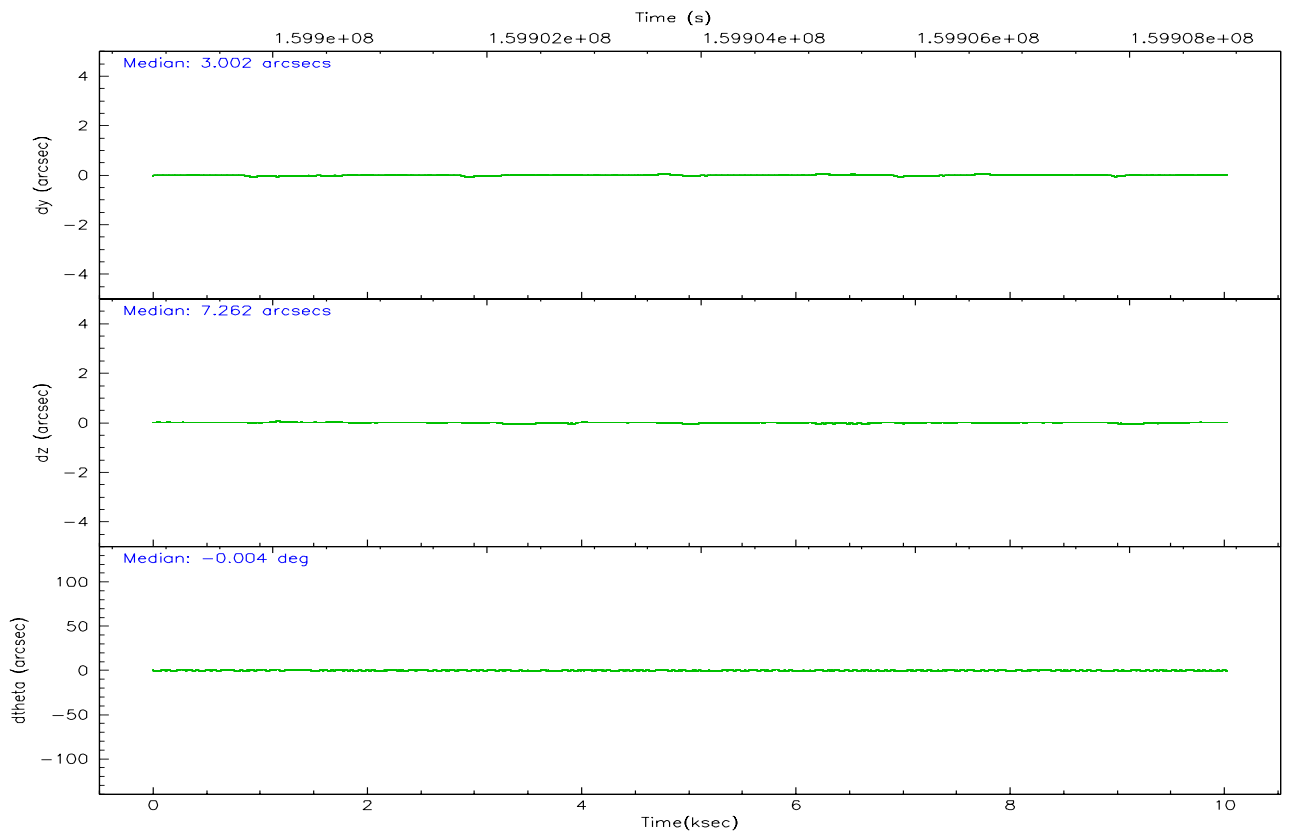
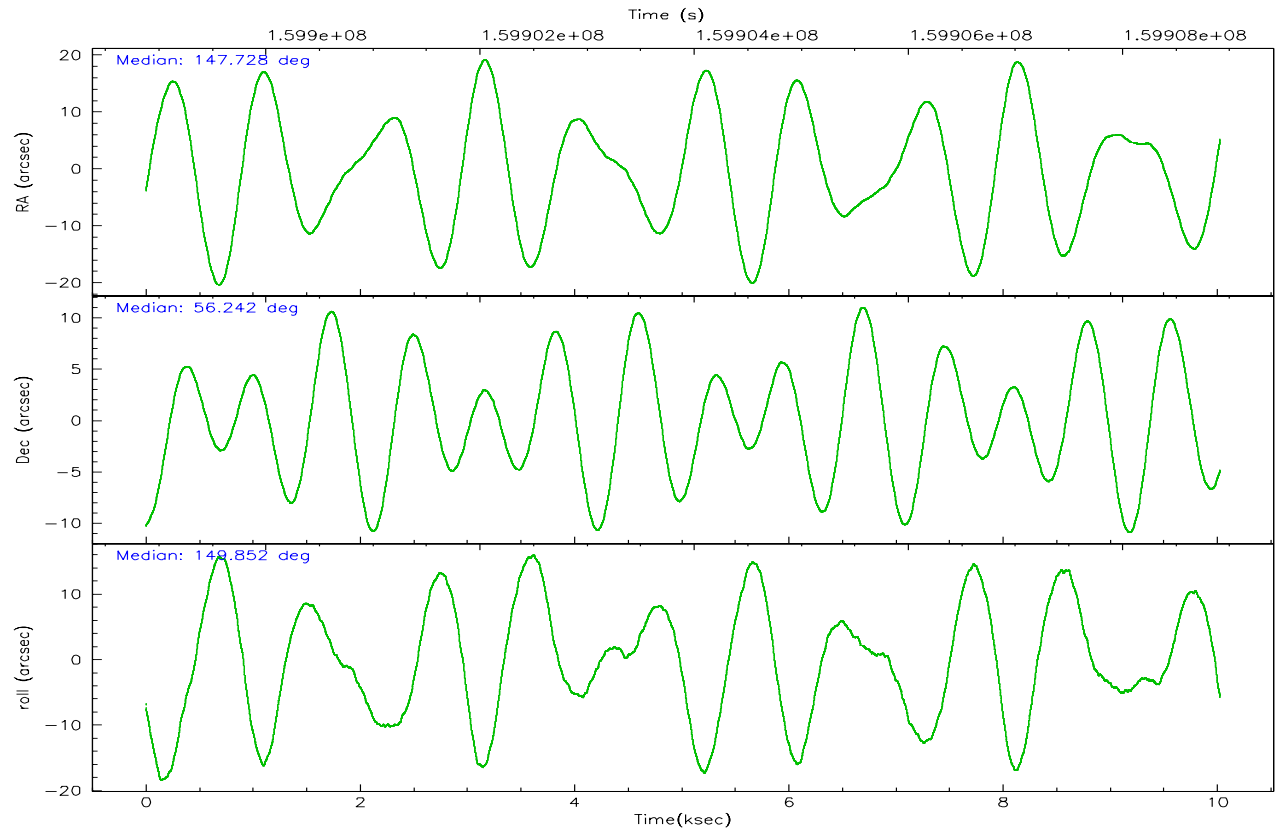
	ccd 2	ccd 3	ccd 5	ccd 6	ccd 7	ccd 8
grade 0 events	2877	2771	8373	2486	1595	4220
	5%	5%	9%	4%	2%	6%
grade 1 events	24	33	461	26	40	49
	0%	0%	0%	0%	0%	0%
grade 2 events	1242	1145	10973	1336	6536	2956
	2%	2%	12%	2%	9%	4%
grade 3 events	615	603	785	628	1368	1417
	1%	1%	0%	1%	1%	2%
grade 4 events	594	636	807	615	1283	1365
	1%	1%	0%	1%	1%	2%
grade 5 events	2151	2320	3742	2363	4605	3118
	3%	4%	4%	4%	6%	4%
grade 6 events	1082	1034	20066	1344	16169	3404
	1%	1%	23%	2%	22%	4%
grade 7 events	48107	43931	40651	45808	40332	51634
	84%	83%	47%	83%	56%	75%

2.2 Compared Parameters

Parameter	Planned	Actual	Parameter	Planned	Actual
Instrument	ACIS	ACIS	Obspar format version number	6	6
Detector	ACIS-235678	ACIS-235678	Obspar file type	PREDICTED	ACTUAL
Grating	NONE	NONE	Obspar update status	NONE	UPDATED
Data mode	VFAINT	VFAINT	On-chip summing requested	N	N
Observation mode	POINTING	POINTING	Subarray requested	NONE	NONE
Pointing RA	147.776559	147.7275470503627	Alternating exposures requested	N	N
Pointing Dec	56.242369	56.24203597059213	Primary exposure time	0.000000	3.2
Pointing Roll	149.659663	149.8570401318254			
SIM focus pos (mm)	-0.684267	-0.6828225247311905			
SIM defocus (mm)	0	0.001444936568705701			
SIM translation stage pos (mm)	-190.132523	-190.1400660498719			
SIM translation stage offset (mm)	0	0.00754346686406393			
Observation start time	159899907.184000	159898524.76899			
Observation start date	2003-01-25T16:37:23	2003-01-25T16:15:24			
Observation end time	159908907.184000	159909197.58193			
Observation end date	2003-01-25T19:07:23	2003-01-25T19:13:17			
Read mode	TIMED	TIMED			

2.3 Aspect



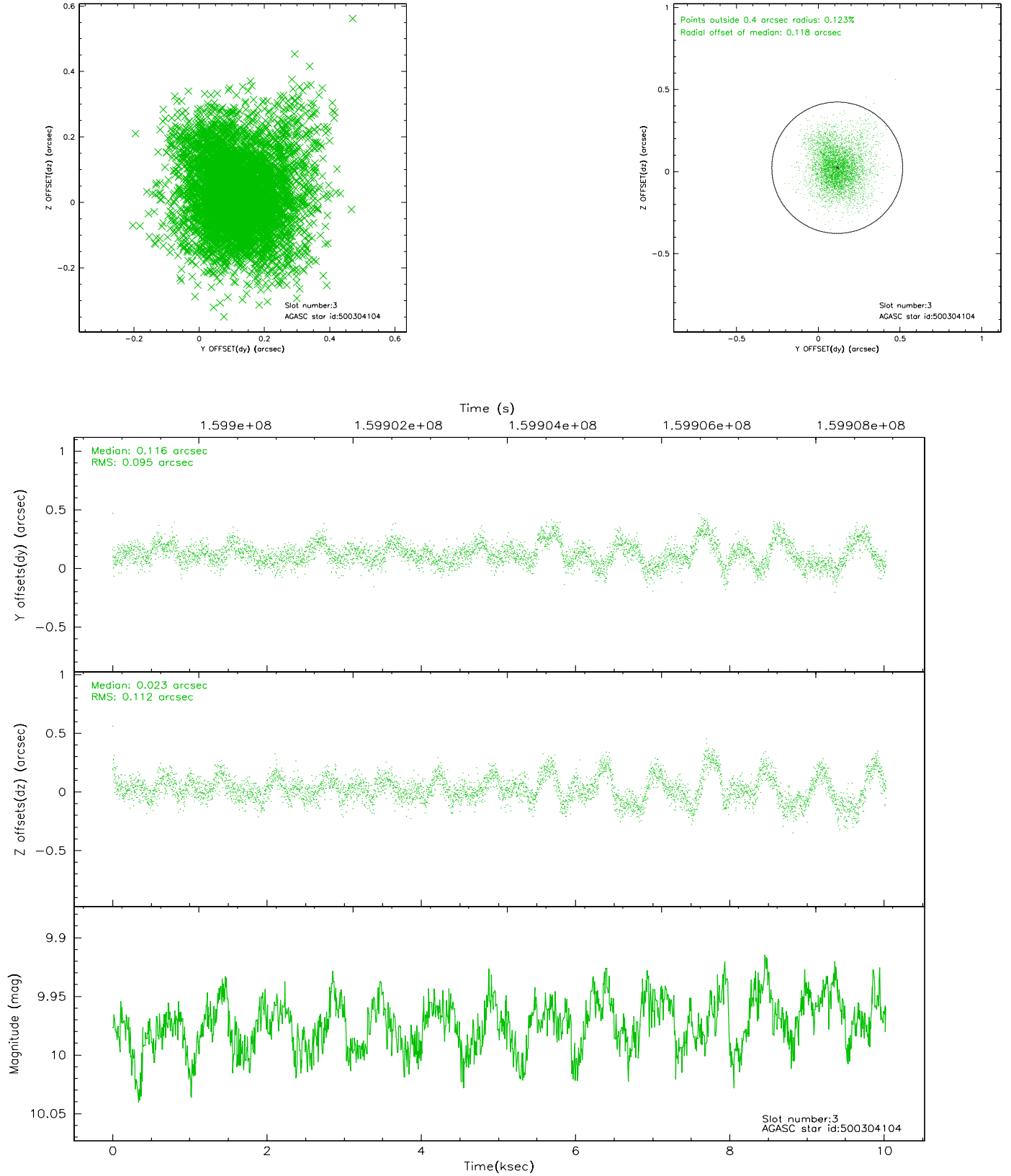


Slot Statistics

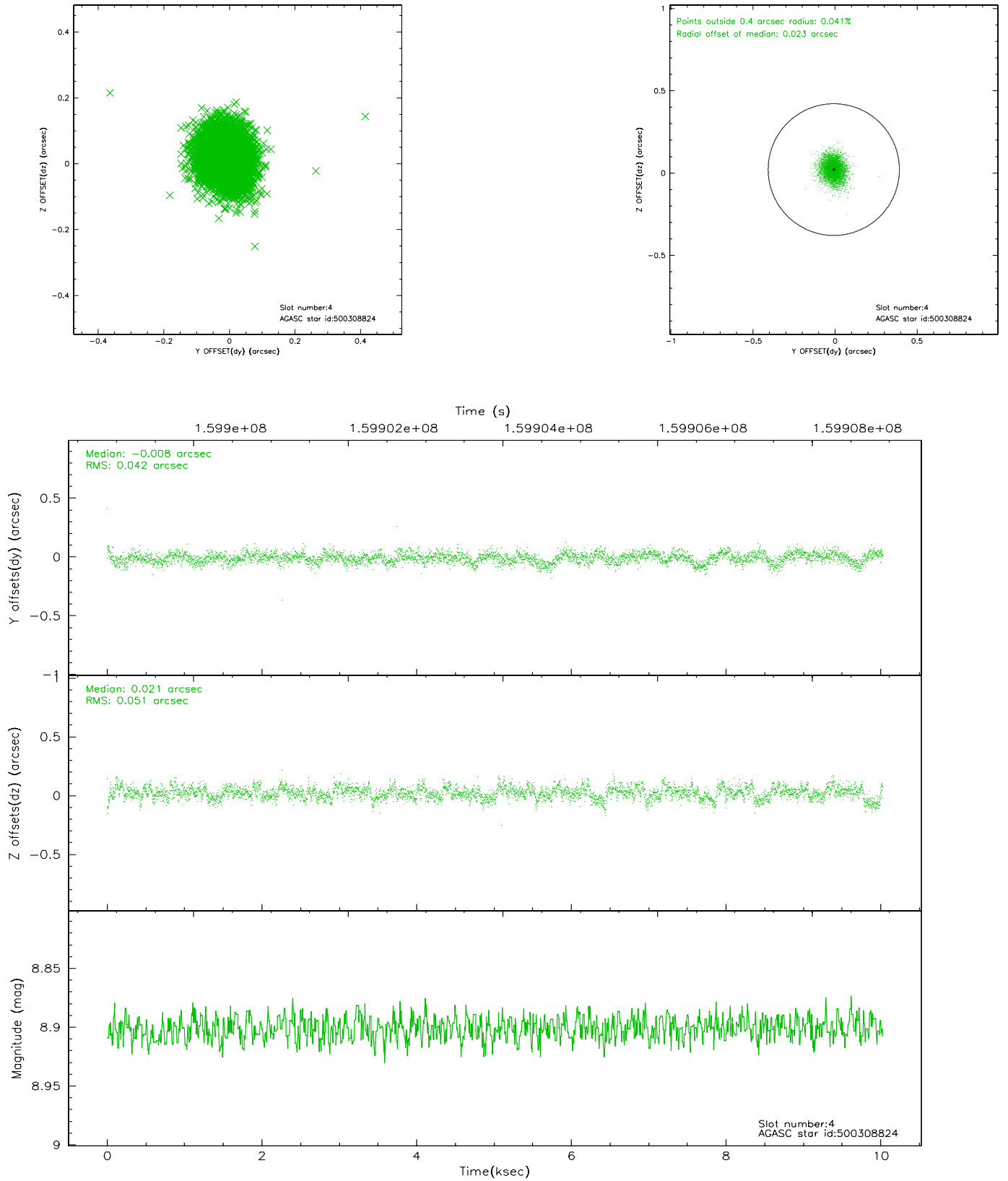
slot	status	id	mag	n_pts	med_dy	med_dz	dr1	dr2	ra	dec	mean_y	mean_z
0	FID	ACIS-S-2	7.12	2446	-0.013	0.012	0.007	0.011	0.000000	0.000000	-755.65	-1728.42
1	FID	ACIS-S-4	7.20	2446	-0.031	0.003	0.005	0.009	0.000000	0.000000	2157.37	179.51
2	FID	ACIS-S-5	7.24	2446	0.013	-0.006	0.006	0.010	0.000000	0.000000	-1807.79	173.77
3	GUIDE	500304104	9.97	4884	0.116	0.023	0.153	0.264	148.137679	56.426588	-284.11	-937.03
4	GUIDE	500308824	8.90	4892	-0.008	0.021	0.070	0.112	148.561668	56.446939	-971.44	-1432.54
5	GUIDE	500313088	8.61	4892	0.004	0.119	0.071	0.114	148.648854	56.088054	-1787.00	-415.30
6	GUIDE	500313496	9.71	4887	-0.056	-0.085	0.135	0.224	146.803644	55.812712	923.73	2317.08
7	GUIDE	500314984	9.68	4888	-0.056	-0.076	0.113	0.183	147.165650	55.801770	268.50	1989.13

2.4 Star Slots

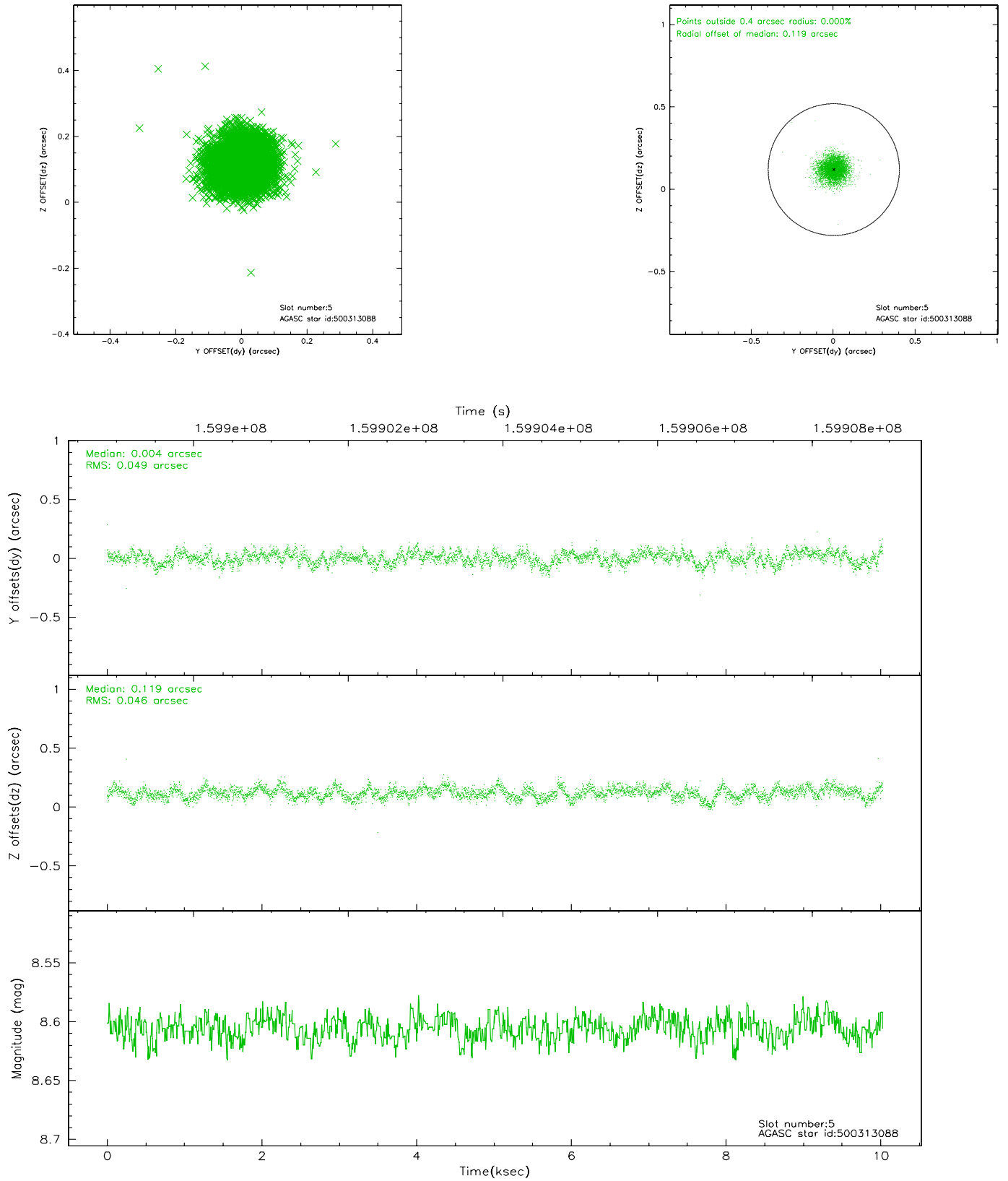
2.4.1 Slot 3



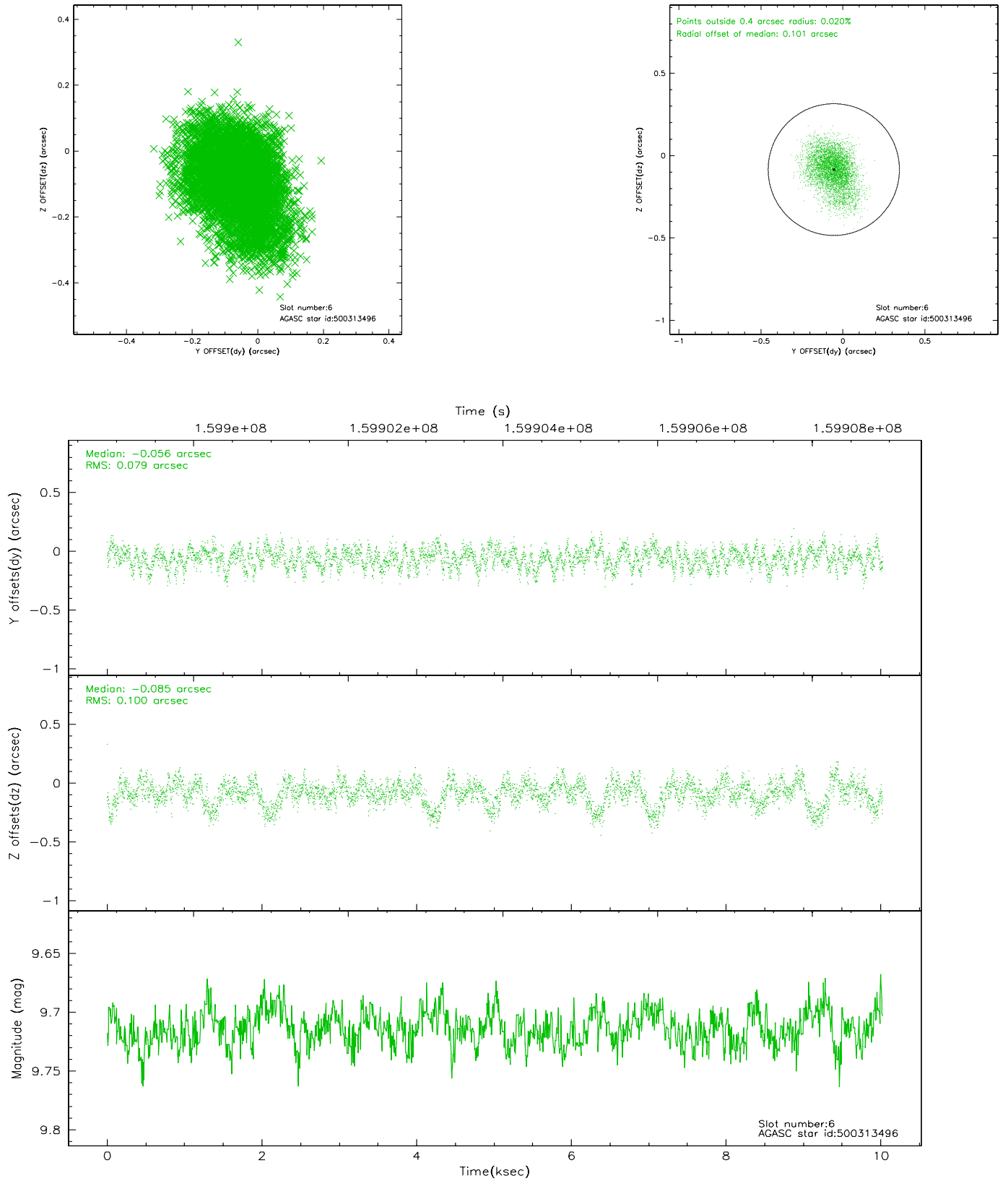
2.4.2 Slot 4



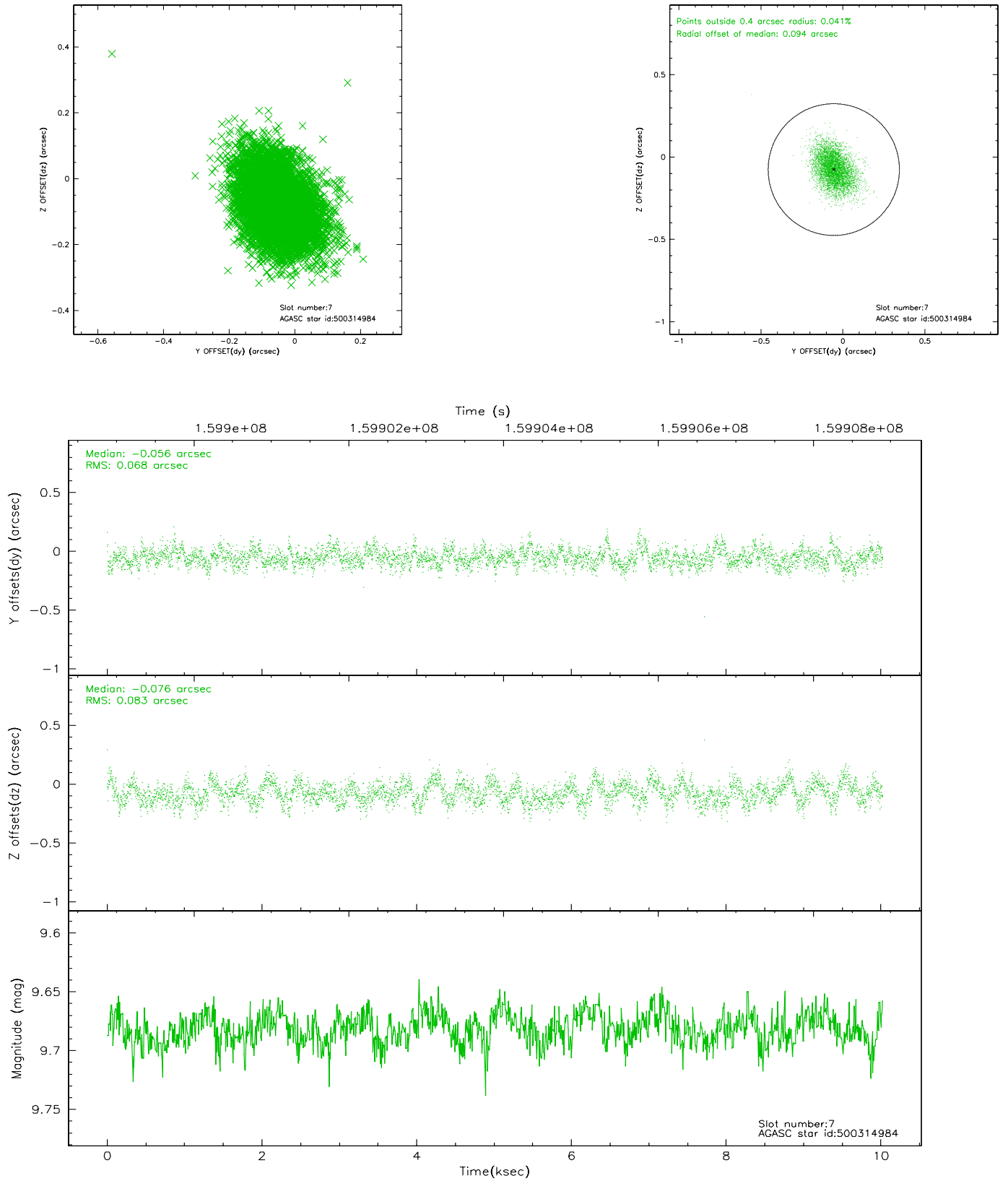
2.4.3 Slot 5



2.4.4 Slot 6

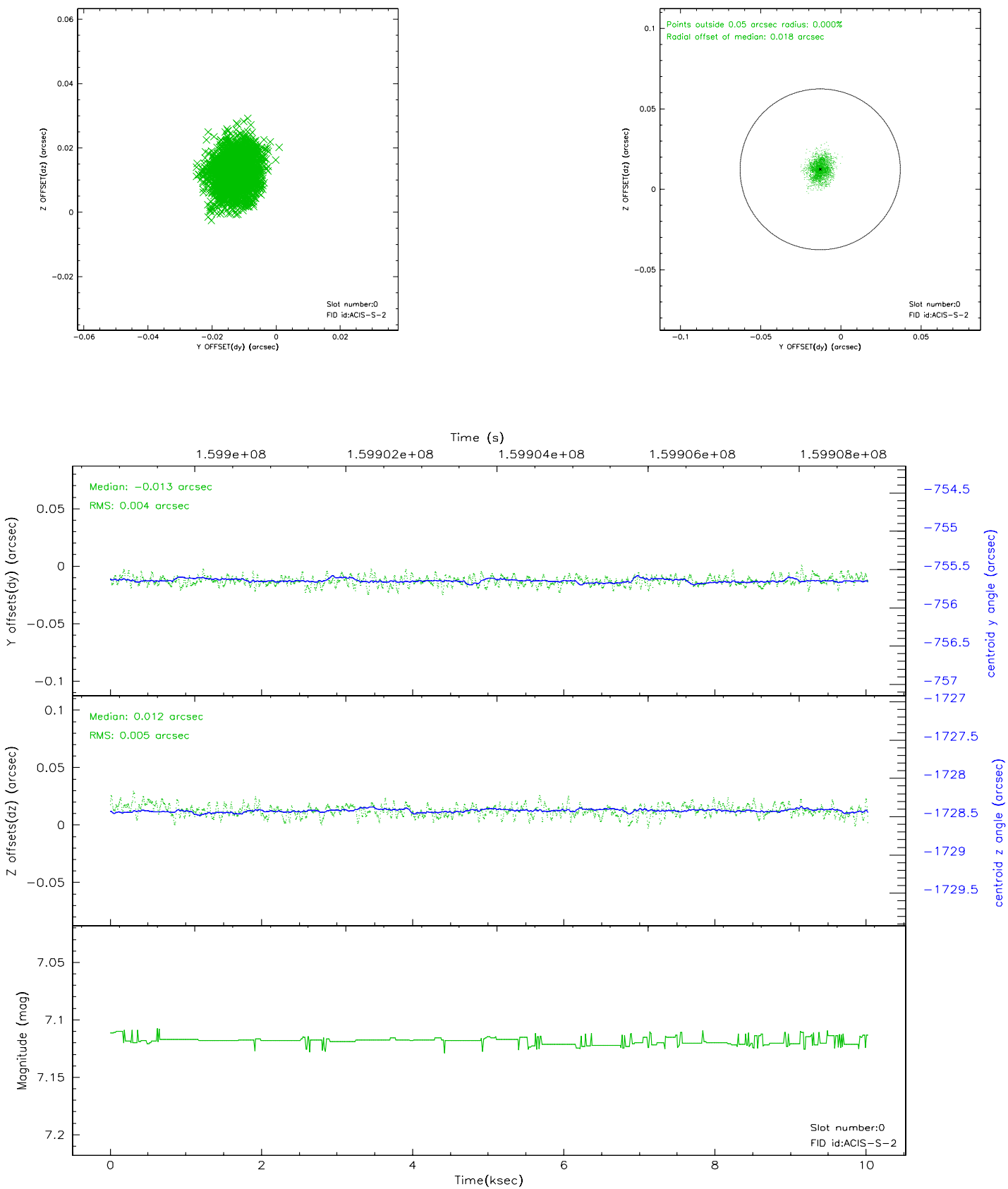


2.4.5 Slot 7

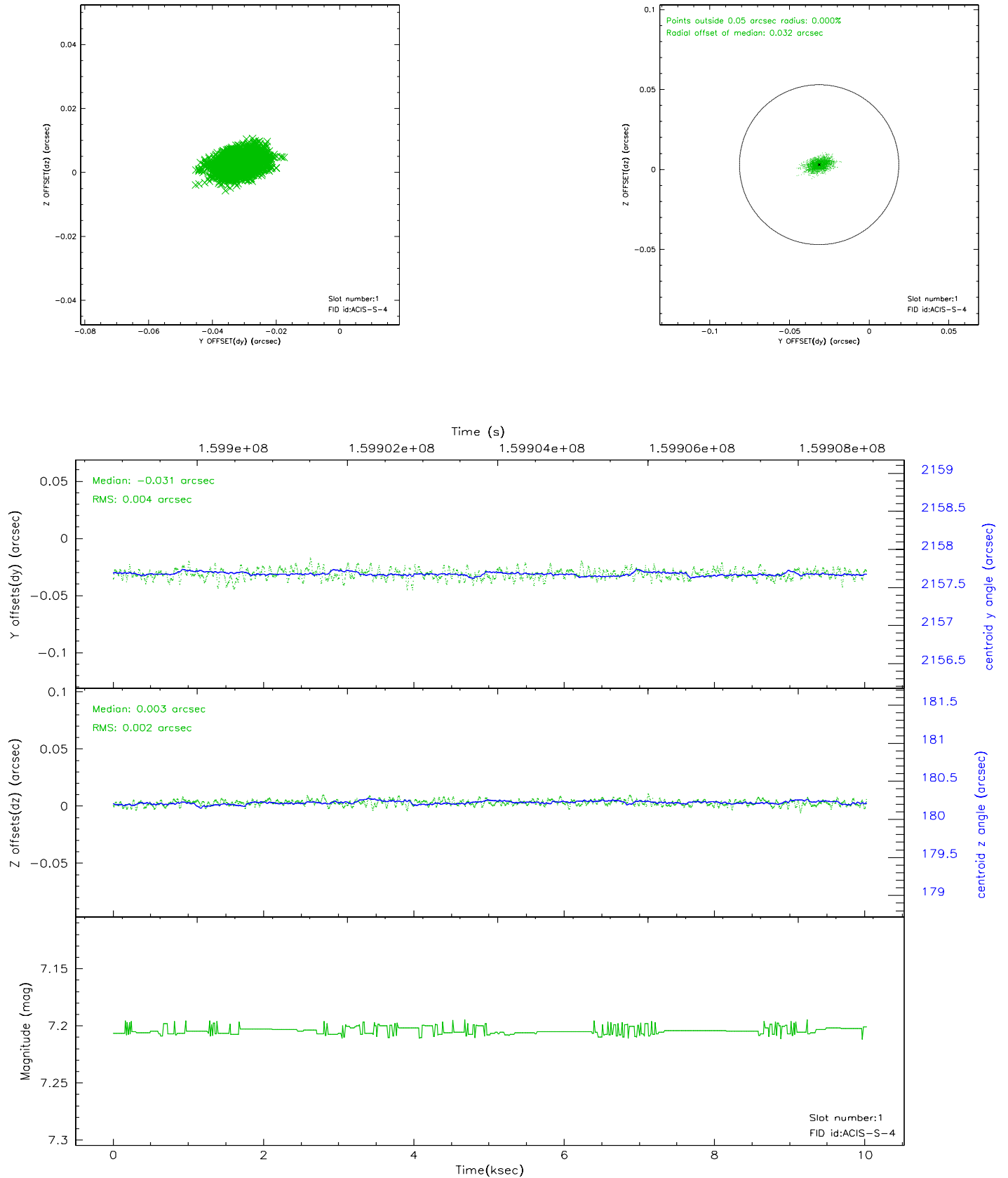


2.5 FID Slots

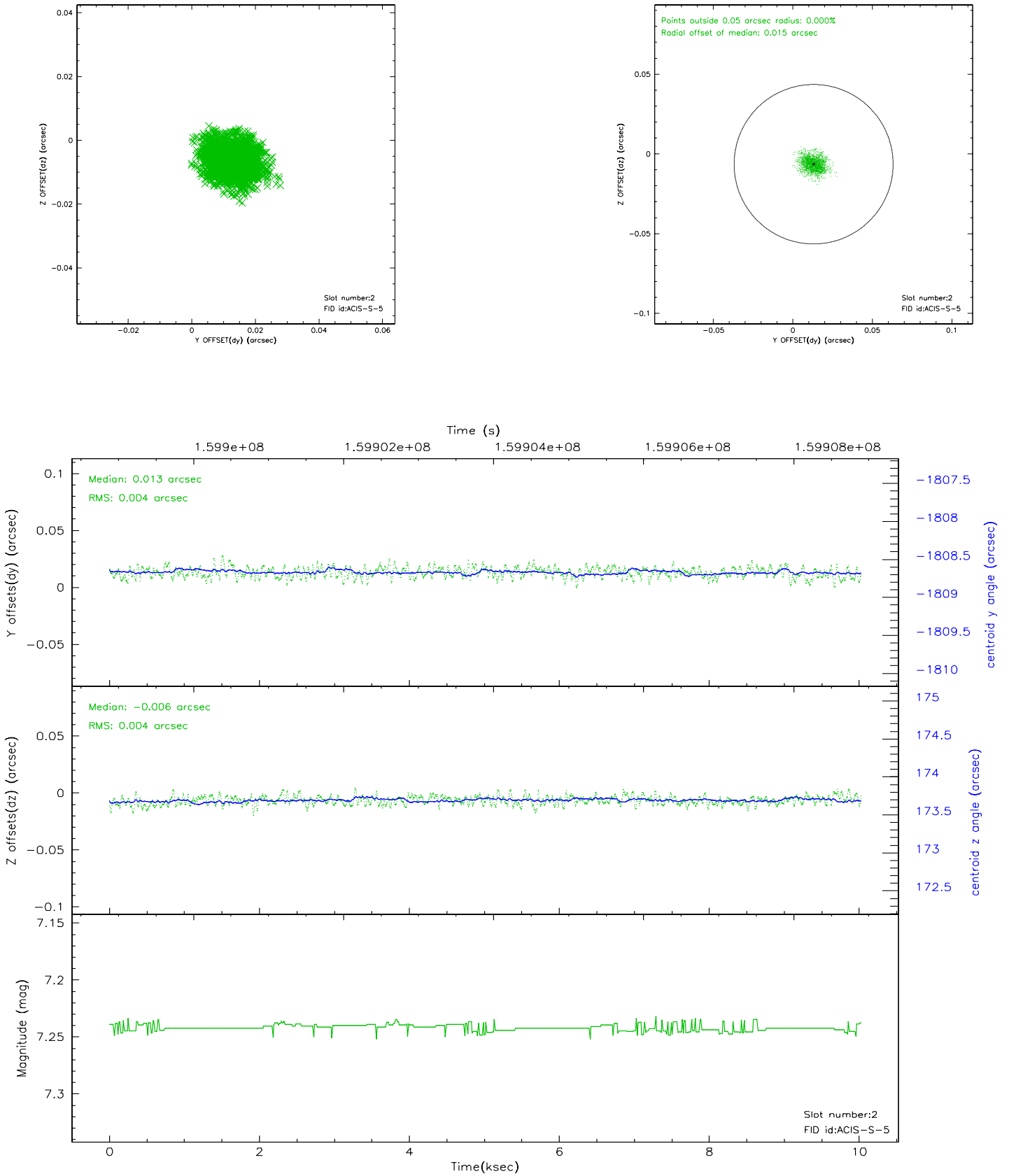
2.5.1 Slot 0



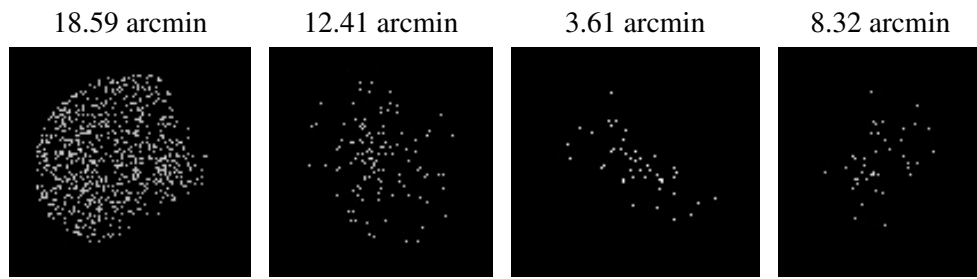
2.5.2 Slot 1



2.5.3 Slot 2



3 Point Sources



A Summary

A.1 Status

V&V Scientist	Jen Lauer
V&V Date (YYYY-MM-DD)	2006.07.19
V&V Edition	1
V&V Disposition and Status	OK
V&V Charge Time	8.966

A.2 Comments

The ACIS focal plane temperature was above calibration limits for the entire observation.

The ACIS spectral response calibration is less accurate at these warmer temperatures than it is at -119.7 C. Users whose science objectives depend on the most accurate spectral response (ie: fitting line-rich spectra) may notice an effect. Users whose science objectives do not depend on the most accurate spectral response should not notice an effect.