

# V&V Reference Report

## L2 ASCDS Version : 7.6.8.1

Observation 3981 - L2 Version 001  
Chandra X-Ray Center

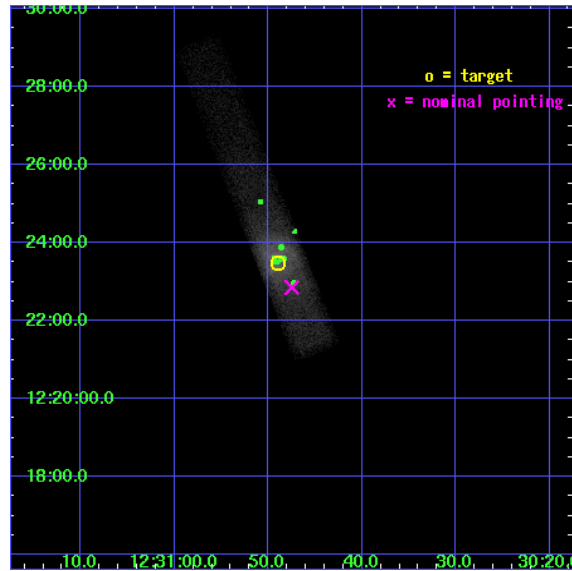
L2 Processing Date : Aug 10 2006

## Contents

<b>1</b>	<b>Front</b>	<b>2</b>
<b>2</b>	<b>OBI</b>	<b>3</b>
2.1	OBI . . . . .	3
2.1.1	Images . . . . .	3
2.1.2	Bias . . . . .	3
2.1.3	Parameters . . . . .	4
2.1.4	Events . . . . .	4
2.2	Compared Parameters . . . . .	5
2.3	Aspect . . . . .	6
2.4	Star Slots . . . . .	9
2.4.1	Slot 3 . . . . .	9
2.4.2	Slot 4 . . . . .	10
2.4.3	Slot 5 . . . . .	11
2.4.4	Slot 6 . . . . .	12
2.4.5	Slot 7 . . . . .	13
2.5	FID Slots . . . . .	14
2.5.1	Slot 0 . . . . .	14
2.5.2	Slot 1 . . . . .	15
2.5.3	Slot 2 . . . . .	16
<b>3</b>	<b>Point Sources</b>	<b>17</b>
<b>A</b>	<b>Summary</b>	<b>18</b>
A.1	Status . . . . .	18
A.2	Comments . . . . .	18

# 1 Front

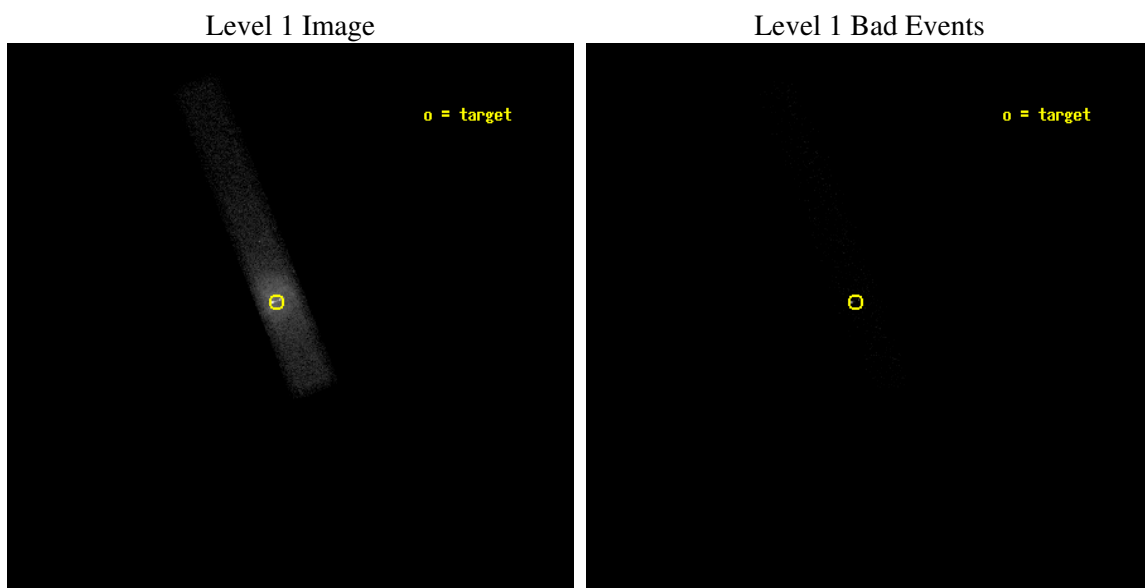
seq_num	700660
obs_id	3981
title	X-RAY VARIABILITY IN THE JET AND CORE OF M87
observer	Dr. Daniel Harris
object	M87
dtcycle	0
cycle	P
ra_targ	187.704167
dec_targ	12.391667
ra_nom	187.69792768738
dec_nom	12.380877714478
roll_nom	248.40666776115
revision	2
ontime	5156.8000768423
livetime	4676.9454714695
ontime7	5156.8000768423
l2events	54820



## 2 OBI

### 2.1 OBI

#### 2.1.1 Images



#### 2.1.2 Bias

Chip 7



### 2.1.3 Parameters

obi_num	1
ascdsver	7.6.8.1
caldbver	3.2.2
date	2006-08-10T08:15:38
revision	2

sched_exp_time	4710.475000
ontime	5570.7094870806
ontime7	5570.7094870806
l1events	61124

### 2.1.4 Events

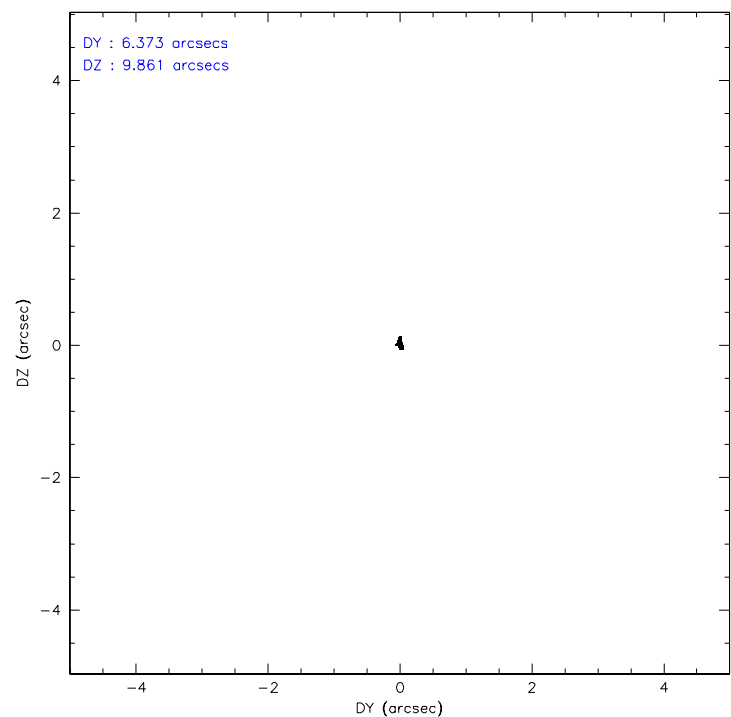
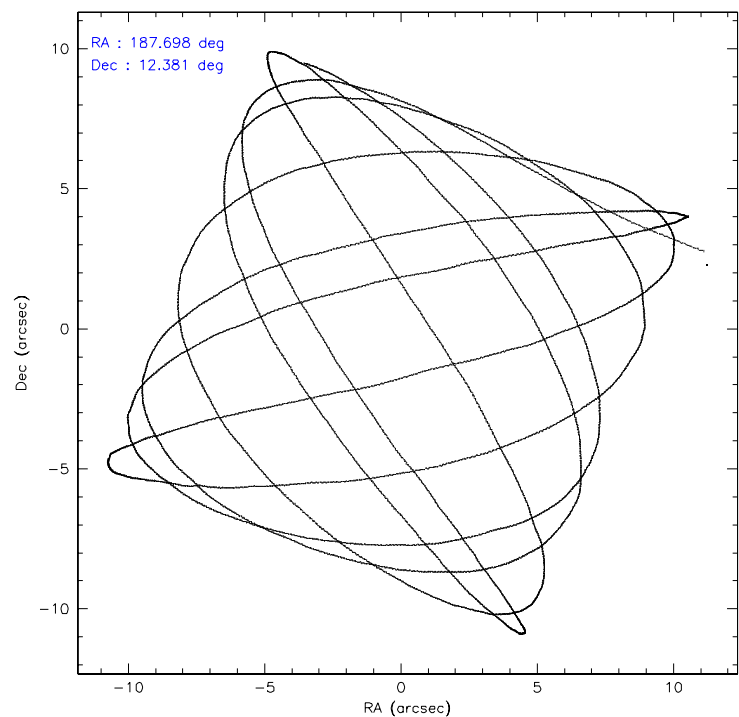
	<b>ccd 7</b>
level 1 events	61124
rejected events	5703
rejected %	9%

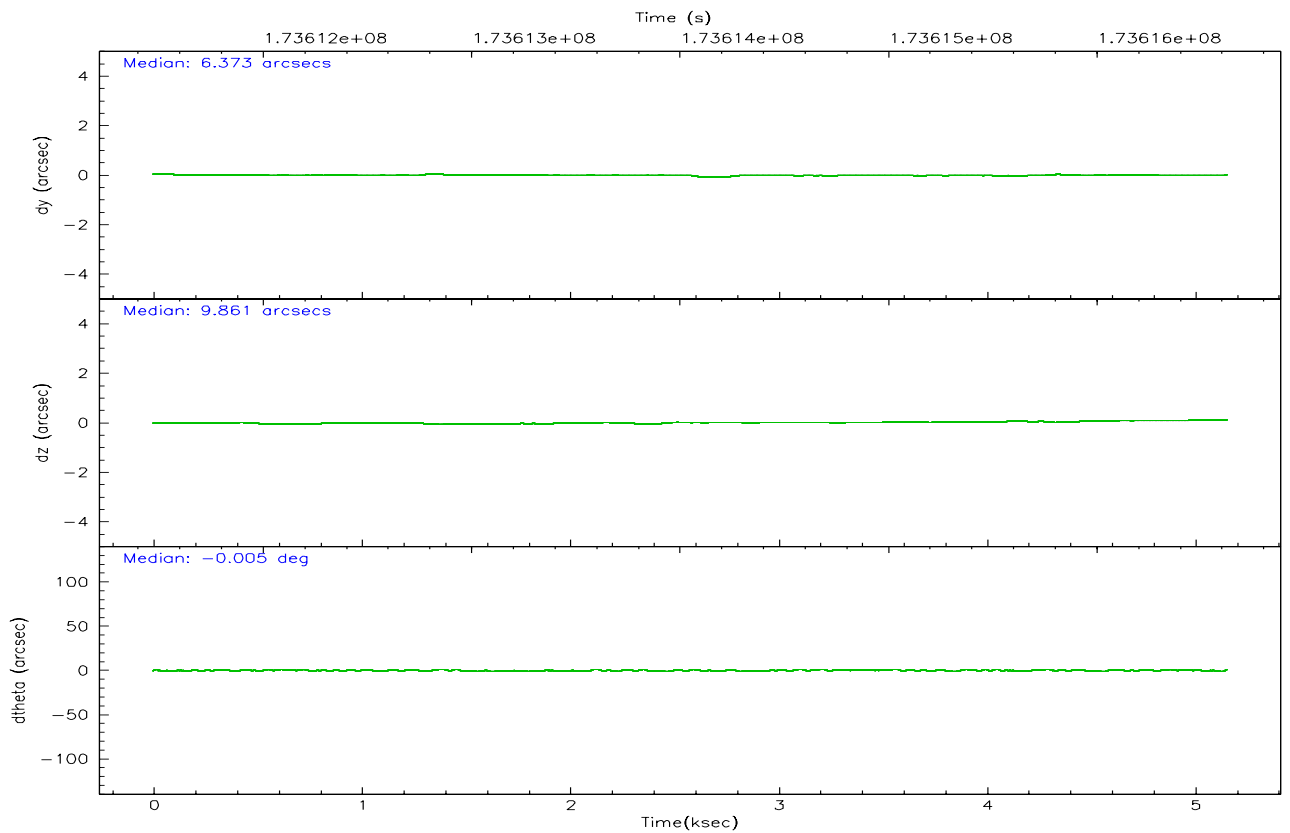
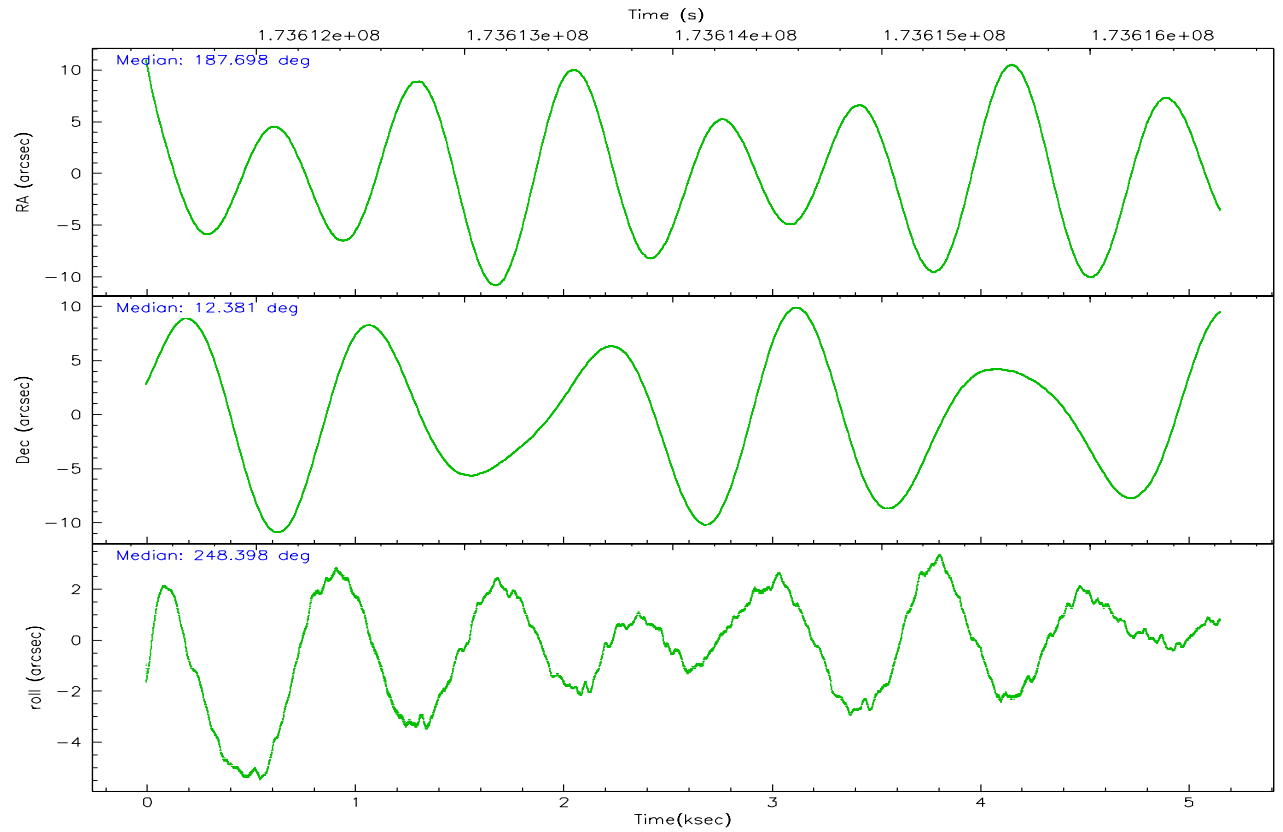
	<b>ccd 7</b>
grade 0 events	17727
	29%
grade 1 events	66
	0%
grade 2 events	15256
	24%
grade 3 events	6344
	10%
grade 4 events	6269
	10%
grade 5 events	929
	1%
grade 6 events	11314
	18%
grade 7 events	3219
	5%

## 2.2 Compared Parameters

Parameter	Planned	Actual	Parameter	Planned	Actual
Instrument	ACIS	ACIS	Obspar format version number	6	6
Detector	ACIS-7	ACIS-7	Obspar file type	PREDICTED	ACTUAL
Grating	NONE	NONE	Obspar update status	NONE	UPDATED
Data mode	FAINT	FAINT	On-chip summing requested	N	N
Observation mode	POINTING	POINTING	Subarray requested	1/8	1/8
Pointing RA	187.693441	187.6979276873758	Subarray start row	0	449
Pointing Dec	12.407686	12.38087771447792	Subarray row count	1024	128
Pointing Roll	248.251004	248.4066677611522	Alternating exposures requested	N	N
SIM focus pos (mm)	-0.684267	-0.6828225247311905	Primary exposure time	0.000000	0.4
SIM defocus (mm)	0	0.001444936568705701			
SIM translation stage pos (mm)	-190.132523	-190.1400660498719			
SIM translation stage offset (mm)	0	0.00754346686406393			
Observation start time	173611912.184000	173610816.98564			
Observation start date	2003-07-03T09:30:48	2003-07-03T09:13:36			
Observation end time	173616623.184000	173616937.2609			
Observation end date	2003-07-03T10:49:19	2003-07-03T10:55:37			
Read mode	TIMED	TIMED			

2.3 Aspect





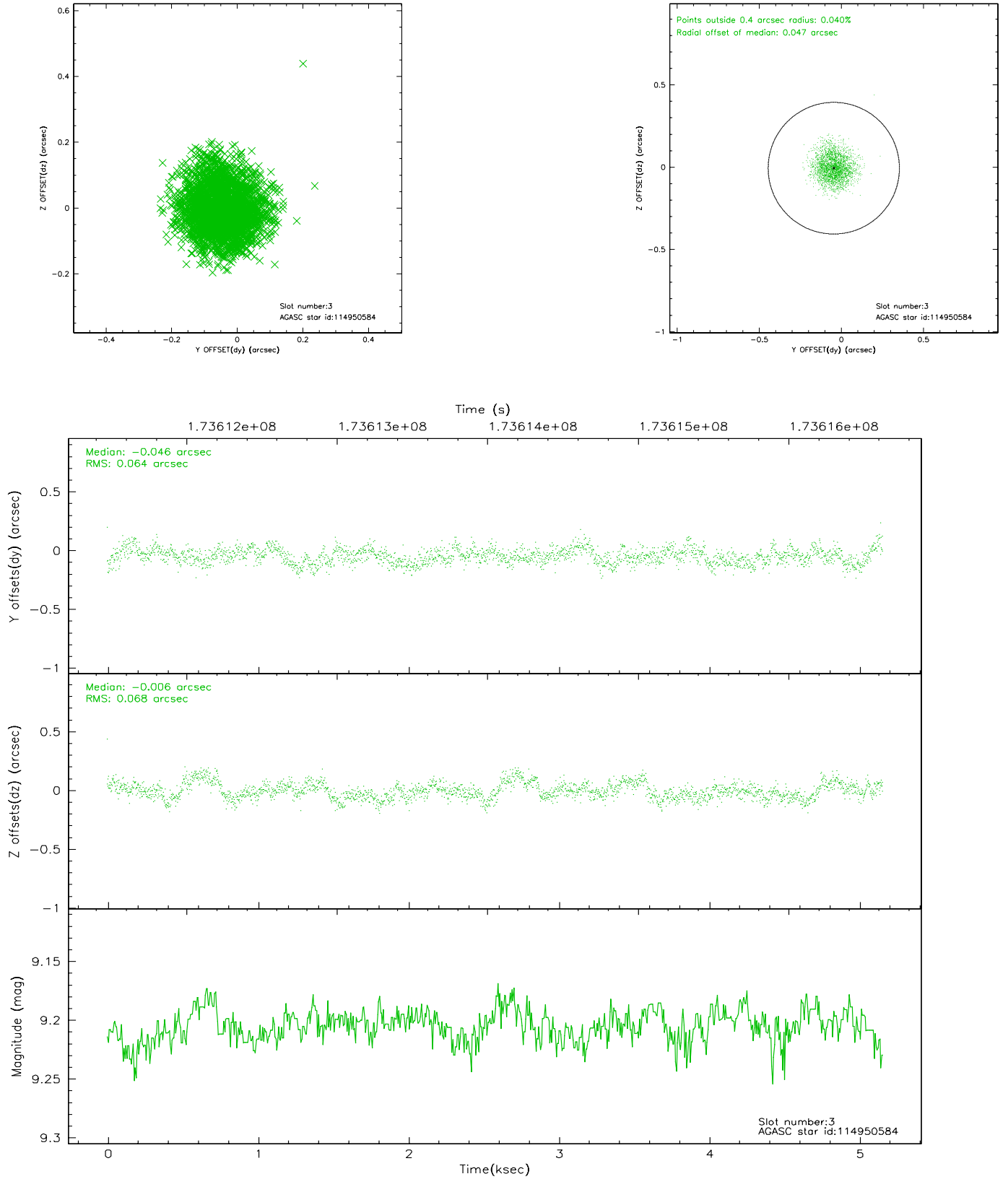
### Slot Statistics

slot	status	id	mag	n_pts	med_dy	med_dz	dr1	dr2	ra	dec	mean_y	mean_z
0	FID	ACIS-S-1	7.18	1258	-0.008	0.008	0.006	0.011	0.000000	0.000000	936.92	-1726.74
1	FID	ACIS-S-5	7.24	1257	-0.024	-0.001	0.006	0.011	0.000000	0.000000	-1811.43	169.61
2	FID	ACIS-S-6	7.35	1258	0.010	0.004	0.007	0.013	0.000000	0.000000	401.23	814.89
3	GUIDE	114950584	9.21	2516	-0.046	-0.006	0.100	0.159	187.487323	11.827248	2210.25	99.90
4	GUIDE	114952824	8.57	2517	-0.077	0.166	0.065	0.104	187.703904	12.486727	-276.48	-71.18
5	GUIDE	114954440	9.20	2515	0.067	-0.070	0.085	0.138	186.915066	12.219118	1642.52	-2293.14
6	GUIDE	114955056	8.32	2517	-0.041	0.040	0.064	0.102	187.914001	12.127854	648.75	1093.45
7	GUIDE	114957008	8.25	2514	0.092	-0.129	0.079	0.136	186.894794	12.099160	2070.90	-2200.71

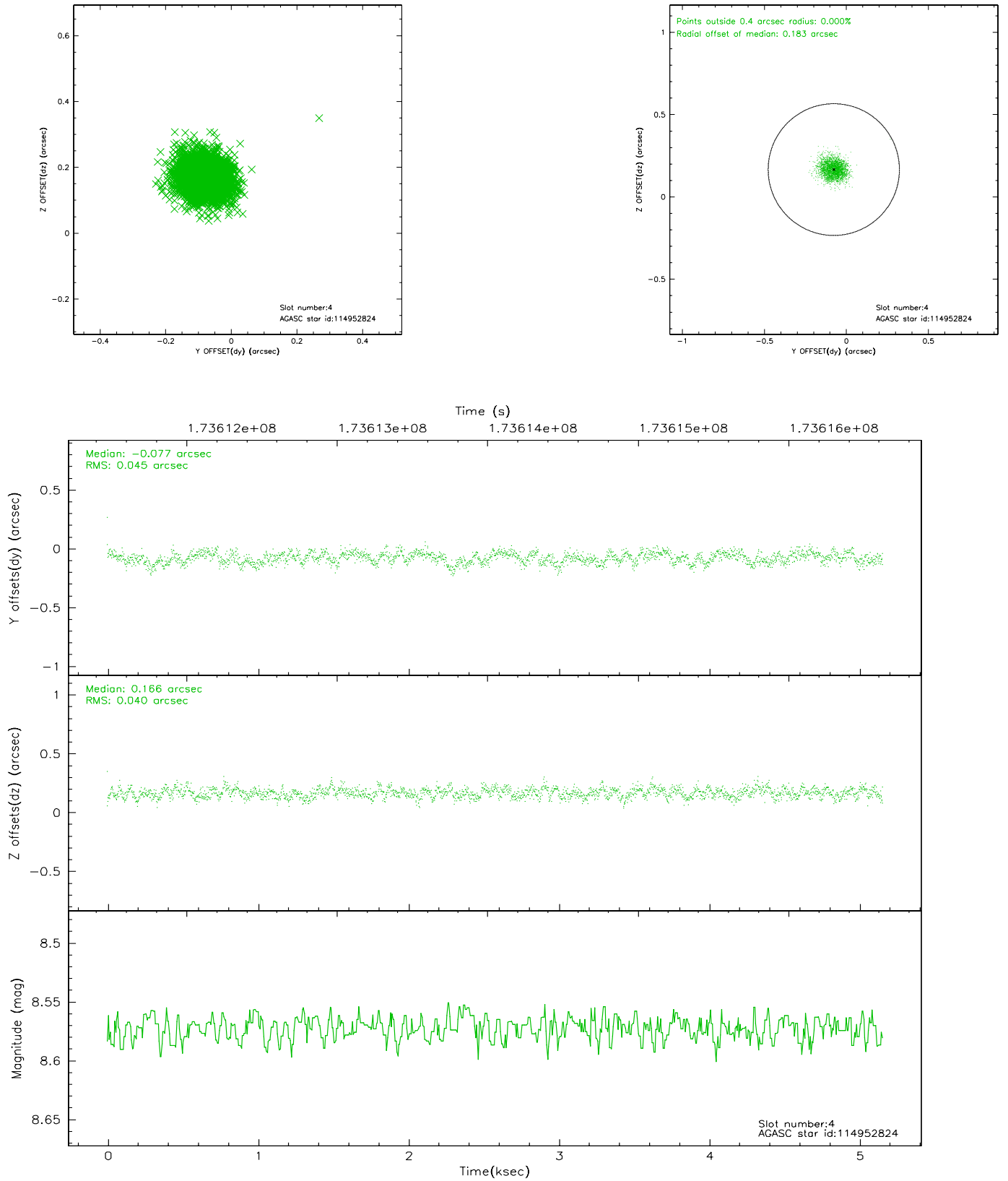


## 2.4 Star Slots

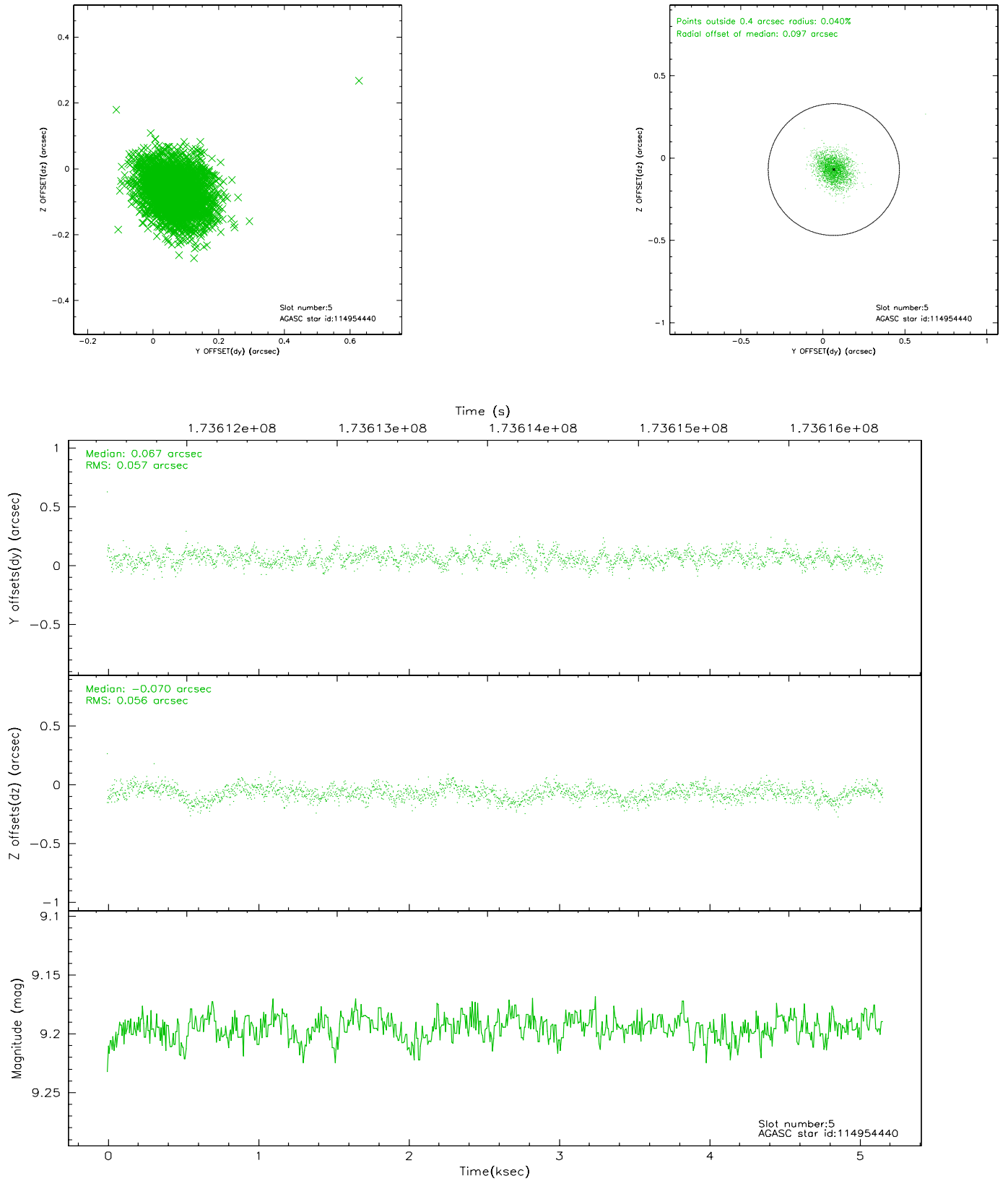
### 2.4.1 Slot 3



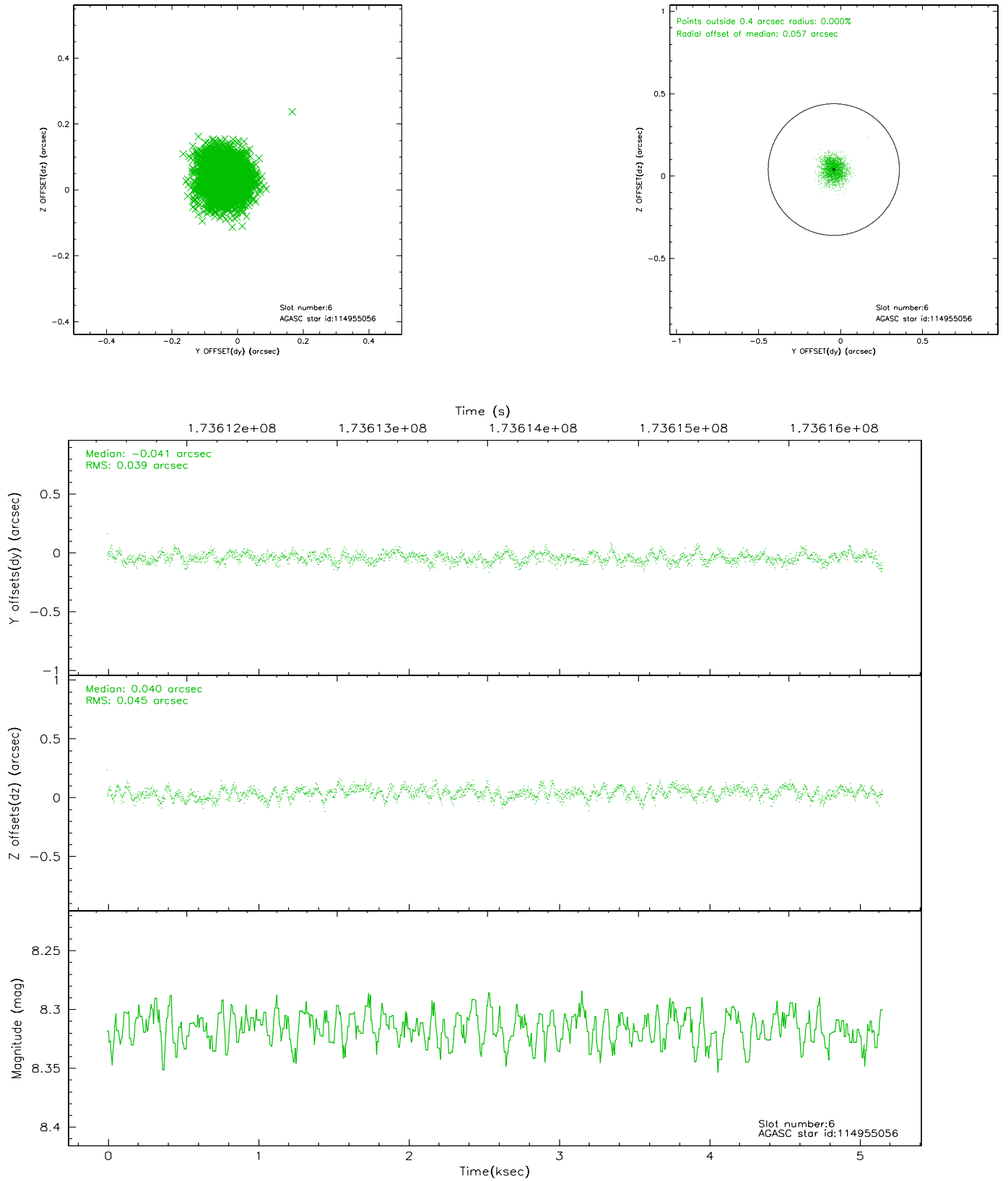
## 2.4.2 Slot 4



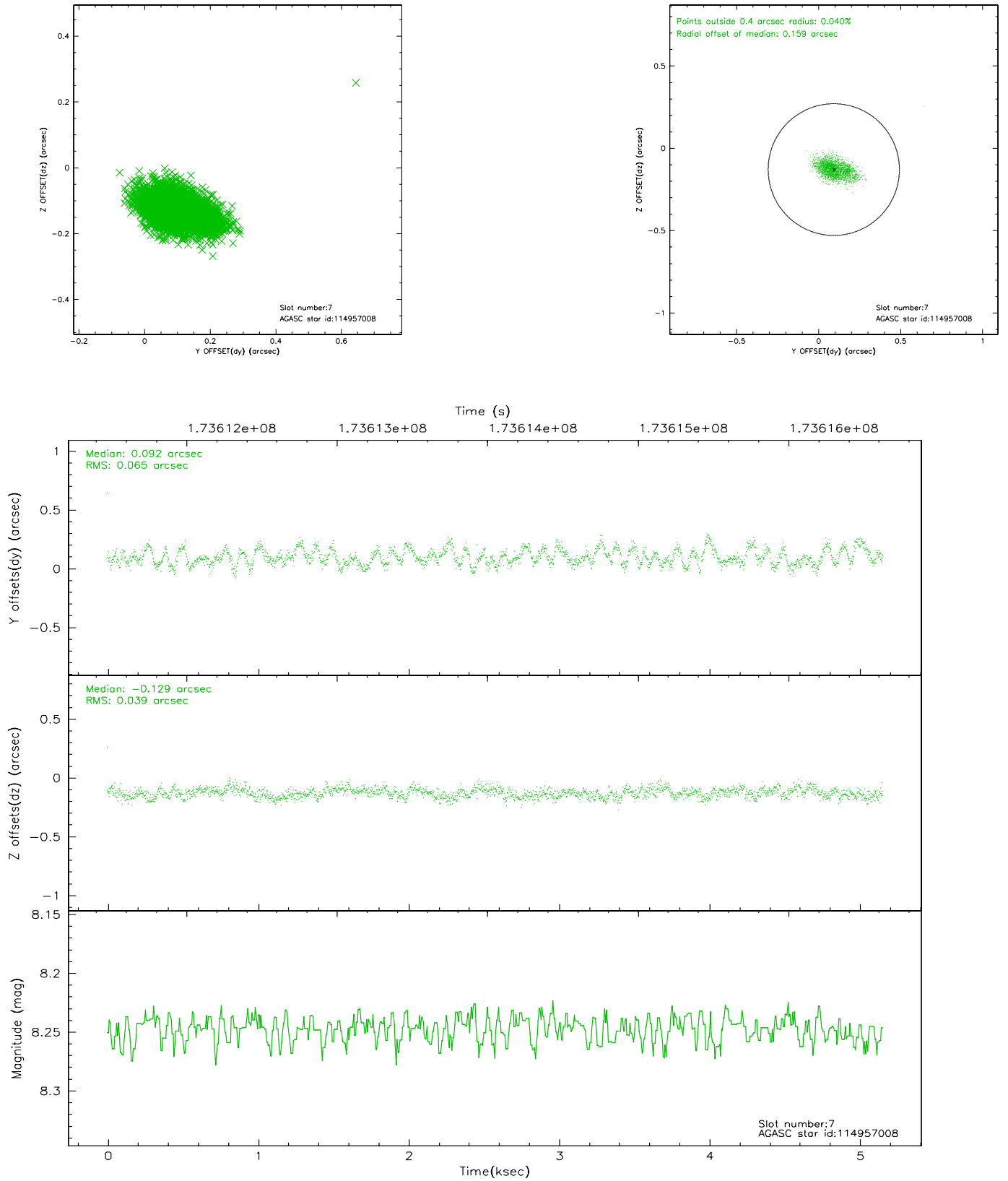
### 2.4.3 Slot 5



## 2.4.4 Slot 6

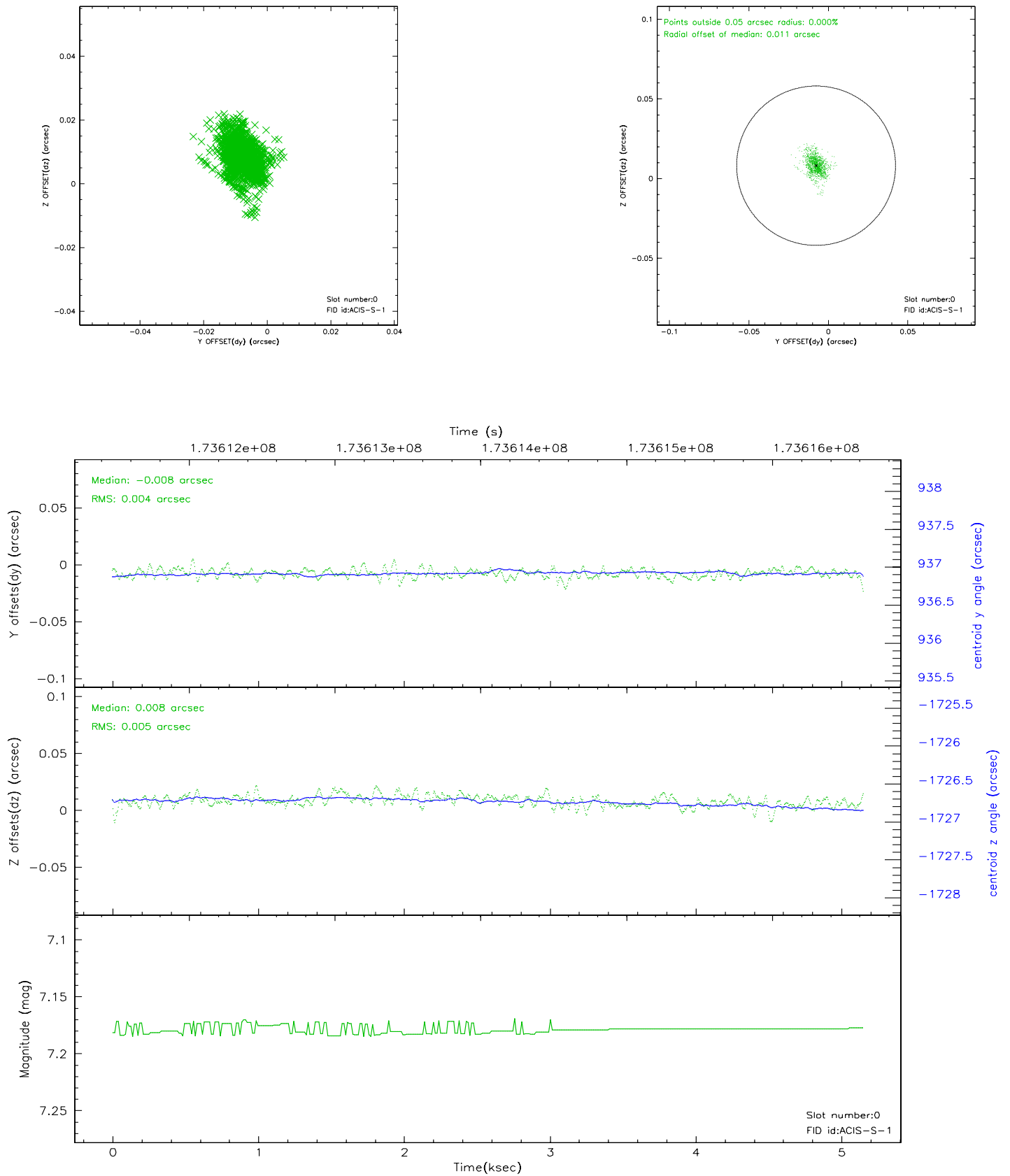


## 2.4.5 Slot 7

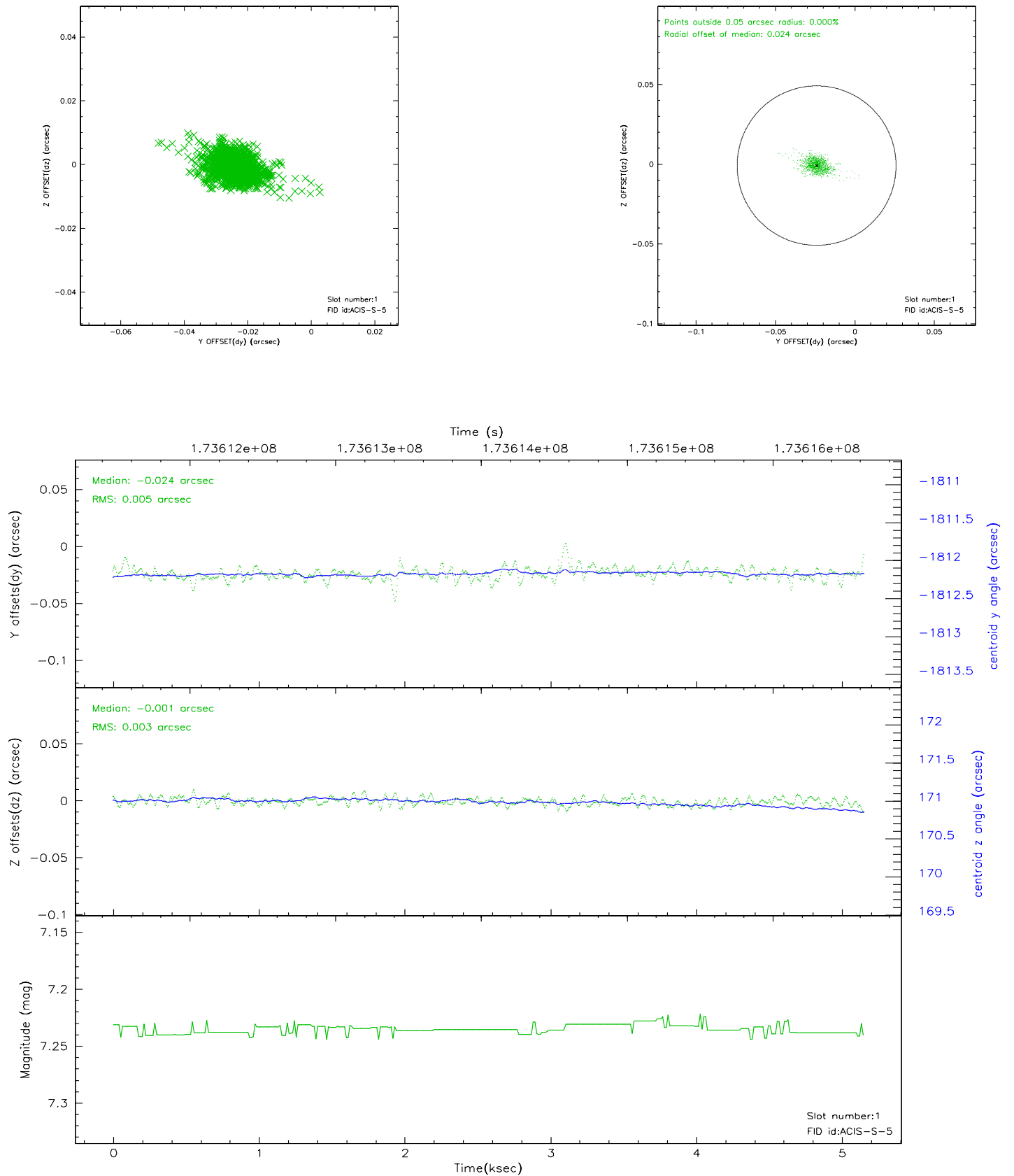


## 2.5 FID Slots

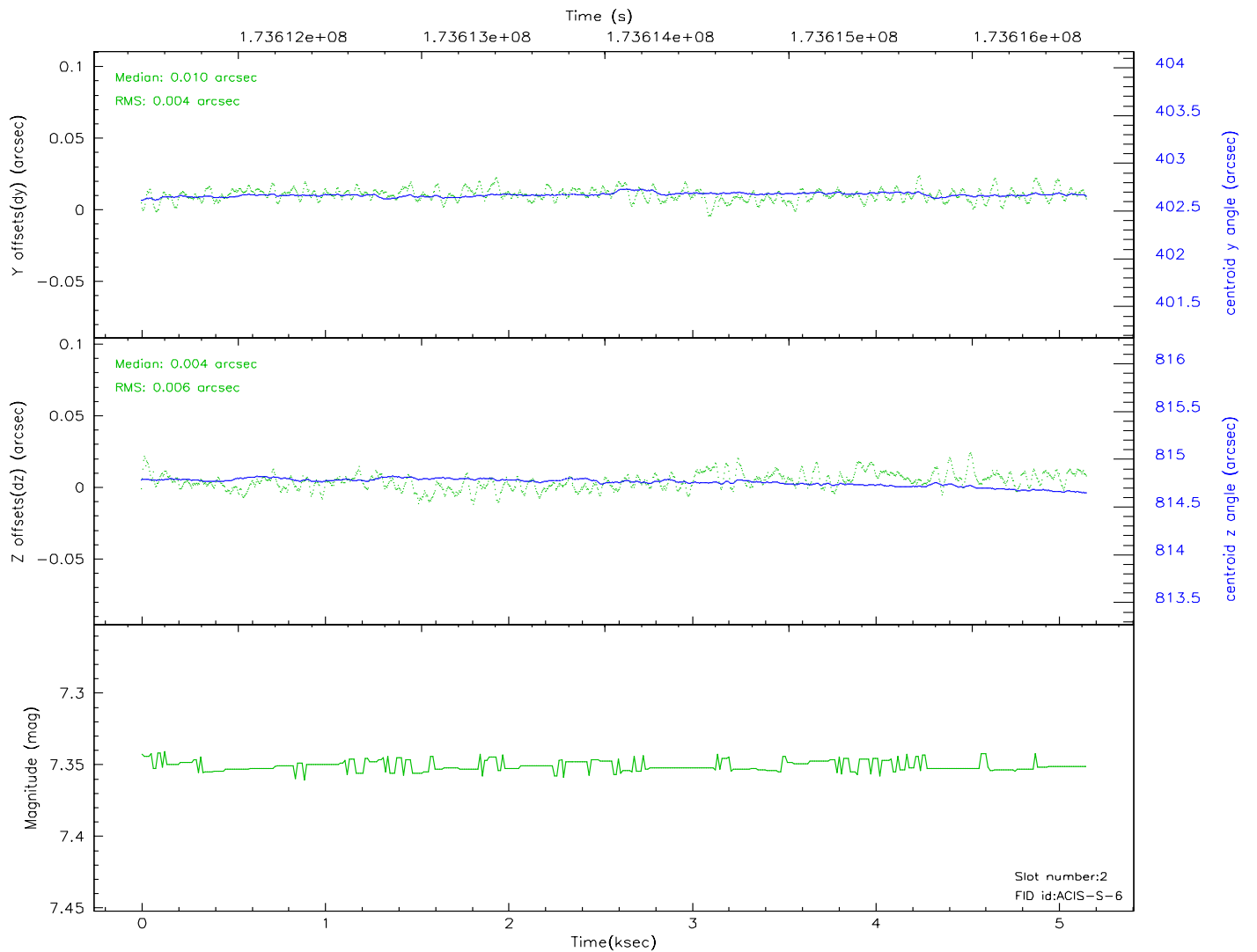
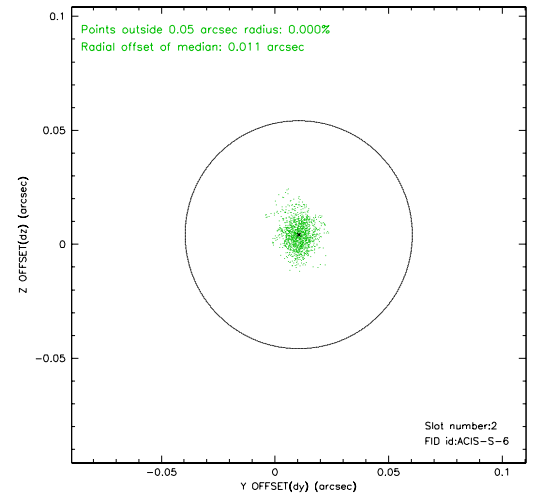
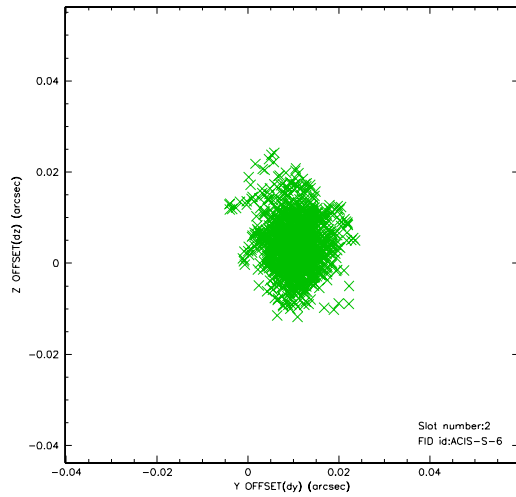
### 2.5.1 Slot 0



## 2.5.2 Slot 1



### 2.5.3 Slot 2





### 3 Point Sources

## A Summary

### A.1 Status

V&V Scientist	Beth Sundheim
V&V Date (YYYY-MM-DD)	2006.08.10
V&V Edition	1
V&V Disposition and Status	OK
V&V Charge Time	5.156

### A.2 Comments