

# V&V Reference Report

## L2 ASCDS Version : 7.6.8.1

Observation 3951 - L2 Version 001  
Chandra X-Ray Center

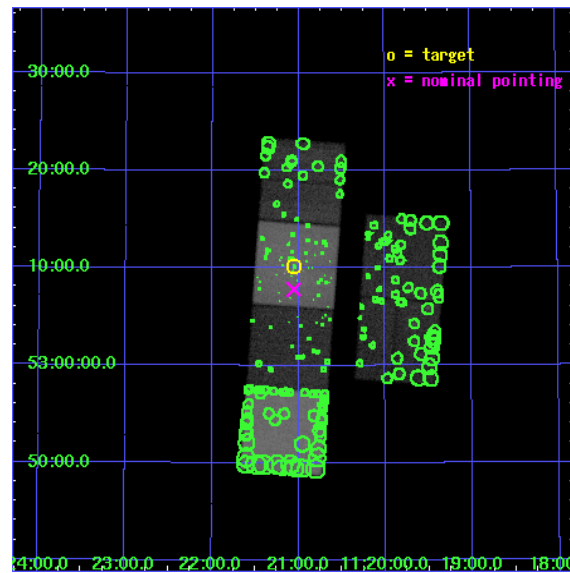
L2 Processing Date : Aug 10 2006

## Contents

<b>1</b>	<b>Front</b>	<b>2</b>
<b>2</b>	<b>OBI</b>	<b>3</b>
2.1	OBI . . . . .	3
2.1.1	Images . . . . .	3
2.1.2	Bias . . . . .	3
2.1.3	Parameters . . . . .	4
2.1.4	Events . . . . .	4
2.2	Compared Parameters . . . . .	5
2.3	Aspect . . . . .	6
2.4	Star Slots . . . . .	9
2.4.1	Slot 3 . . . . .	9
2.4.2	Slot 4 . . . . .	10
2.4.3	Slot 5 . . . . .	11
2.4.4	Slot 6 . . . . .	12
2.4.5	Slot 7 . . . . .	13
2.5	FID Slots . . . . .	14
2.5.1	Slot 0 . . . . .	14
2.5.2	Slot 1 . . . . .	15
2.5.3	Slot 2 . . . . .	16
<b>3</b>	<b>Point Sources</b>	<b>17</b>
<b>A</b>	<b>Summary</b>	<b>18</b>
A.1	Status . . . . .	18
A.2	Comments . . . . .	18

# 1 Front

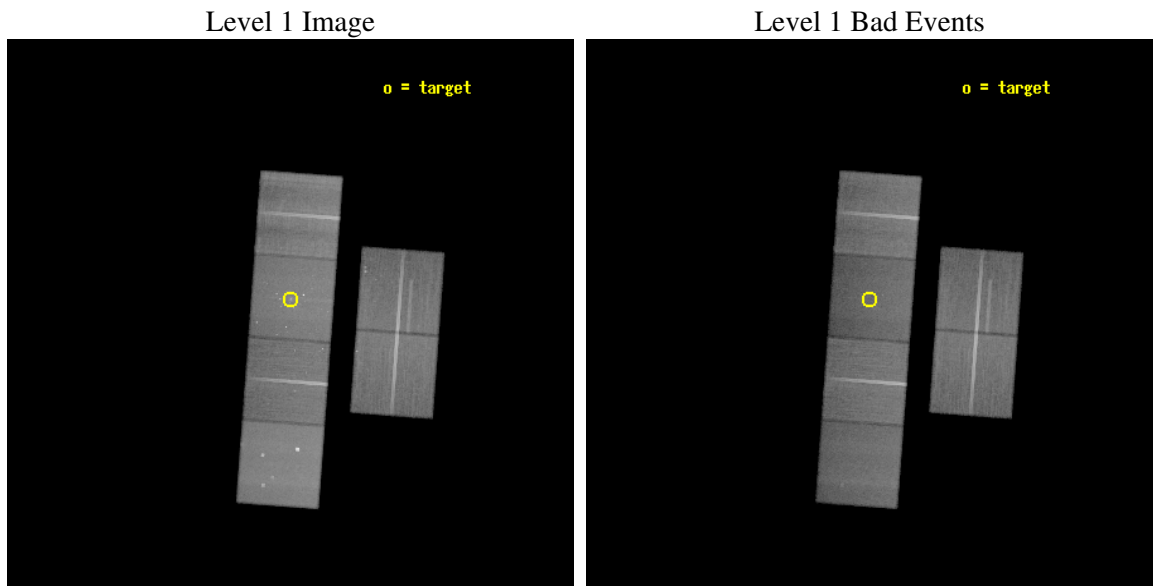
seq_num	600325
obs_id	3951
title	DIFFUSE X-RAY EMISSION FROM THE HOT ISM IN NEARBY SPIRAL GALAXIES
observer	Dr. Wilton Sanders
object	NGC 3631
dtcycle	0
cycle	P
ra_targ	170.261667
dec_targ	53.16925
ra_nom	170.26352384347
dec_nom	53.130220682824
roll_nom	274.2321716307
revision	3
ontime	90207.876822919
livetime	89065.610369925
ontime2	90214.358673692
ontime3	90201.394822627
ontime5	90198.153972
ontime6	90201.394822627
ontime7	90207.876822919
ontime8	90207.876773119
l2events	726485



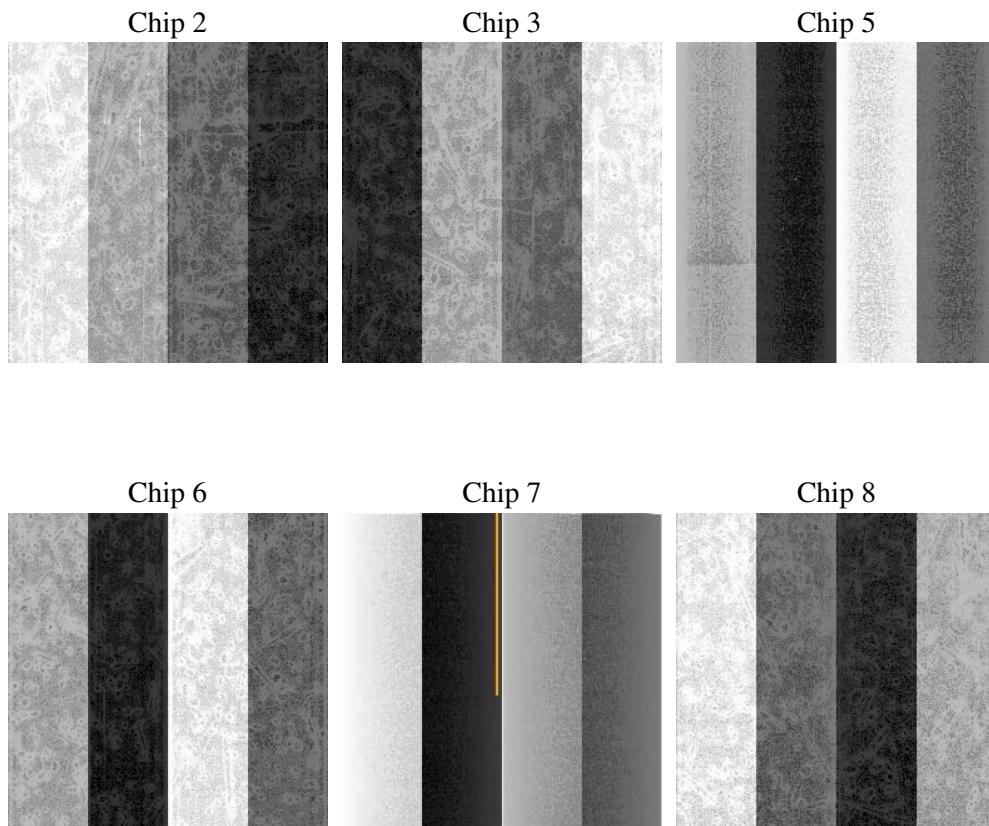
## 2 OBI

### 2.1 OBI

#### 2.1.1 Images



#### 2.1.2 Bias



### 2.1.3 Parameters

obi_num	1
ascdsver	7.6.8.1
caldsver	3.2.2
date	2006-08-10T14:36:10
revision	3

sched_exp_time	90067.054000
ontime	91198.492763579
ontime2	91204.97458443
ontime3	91192.010733366
ontime5	91188.769882739
ontime6	91192.010733366
ontime7	91198.492763579
ontime8	91198.492683858
l1events	3162021

### 2.1.4 Events

	ccd 2	ccd 3	ccd 5	ccd 6	ccd 7	ccd 8
level 1 events	485064	448330	636068	477509	544338	570712
rejected events	434772	399797	322560	421977	293425	437681
rejected %	89%	89%	50%	88%	53%	76%

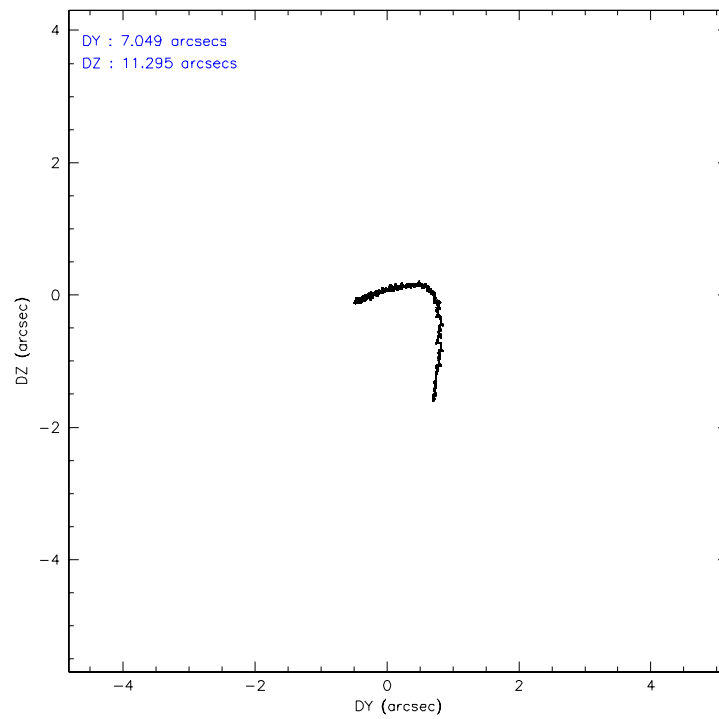
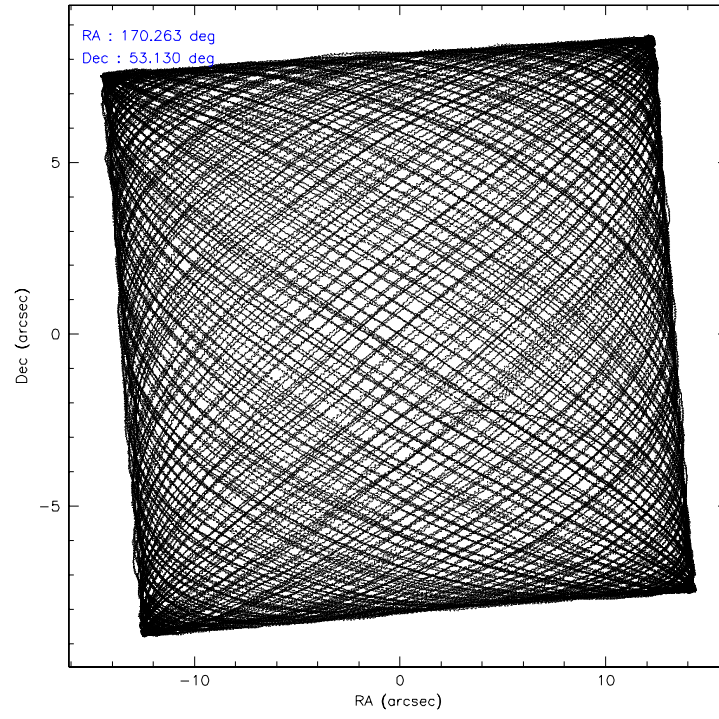
	ccd 2	ccd 3	ccd 5	ccd 6	ccd 7	ccd 8
grade 0 events	20754	20065	29883	23253	21060	44718
	4%	4%	4%	4%	3%	7%
grade 1 events	247	236	171	241	324	407
	0%	0%	0%	0%	0%	0%
grade 2 events	11069	9526	96862	10903	61255	28178
	2%	2%	15%	2%	11%	4%
grade 3 events	5096	5351	8742	5735	15945	13965
	1%	1%	1%	1%	2%	2%
grade 4 events	5261	5237	8047	5610	15774	13264
	1%	1%	1%	1%	2%	2%
grade 5 events	15140	17265	32209	18101	39660	25169
	3%	3%	5%	3%	7%	4%
grade 6 events	8607	8808	173196	10560	139184	34151
	1%	1%	27%	2%	25%	5%
grade 7 events	418890	381842	286958	403106	251136	410860
	86%	85%	45%	84%	46%	71%

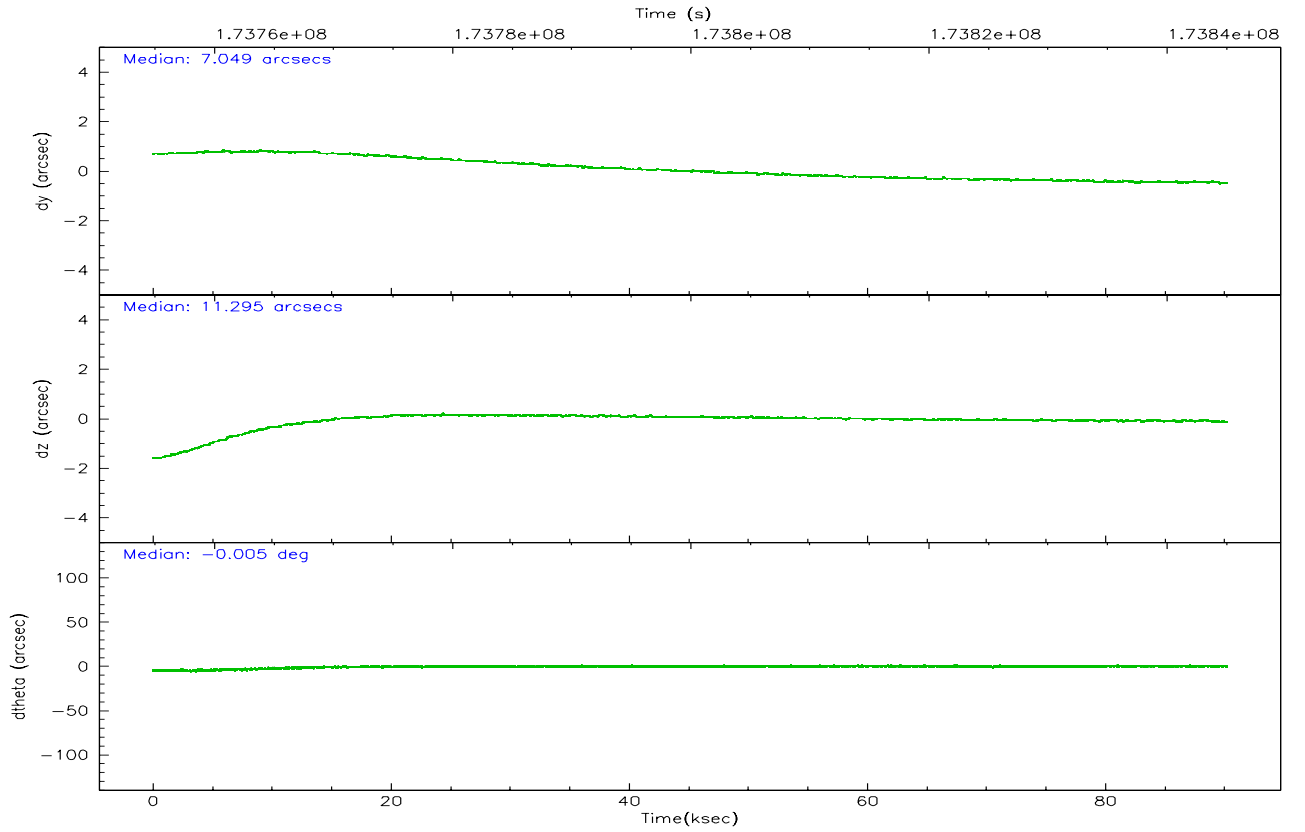
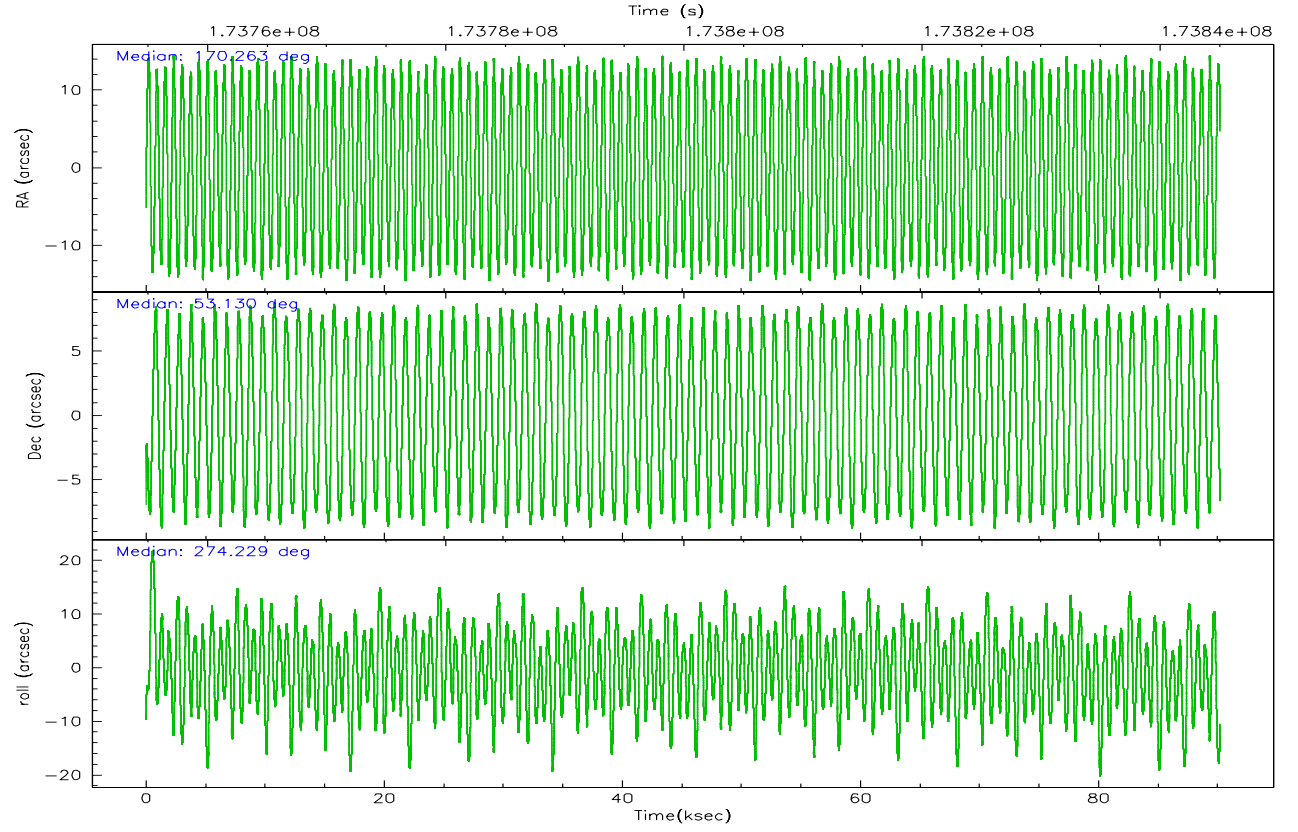


## 2.2 Compared Parameters

Parameter	Planned	Actual	Parameter	Planned	Actual
Instrument	ACIS	ACIS	Obspar format version number	6	6
Detector	ACIS-235678	ACIS-235678	Obspar file type	PREDICTED	ACTUAL
Grating	NONE	NONE	Obspar update status	NONE	UPDATED
Data mode	VFAINT	VFAINT	On-chip summing requested	N	N
Observation mode	POINTING	POINTING	Subarray requested	NONE	NONE
Pointing RA	170.237459	170.2635238434748	Alternating exposures requested	N	N
Pointing Dec	53.152503	53.13022068282421	Primary exposure time	0.000000	3.2
Pointing Roll	274.096402	274.2321716306989			
SIM focus pos (mm)	-0.684267	-0.6828225247311905			
SIM defocus (mm)	0	0.001444936568705701			
SIM translation stage pos (mm)	-190.132523	-190.1400660498719			
SIM translation stage offset (mm)	0	0.00754346686406393			
Observation start time	173754989.184000	173753441.64171			
Observation start date	2003-07-05T01:15:25	2003-07-05T00:50:41			
Observation end time	173845056.184000	173845370.30813			
Observation end date	2003-07-06T02:16:32	2003-07-06T02:22:50			
Read mode	TIMED	TIMED			

## 2.3 Aspect



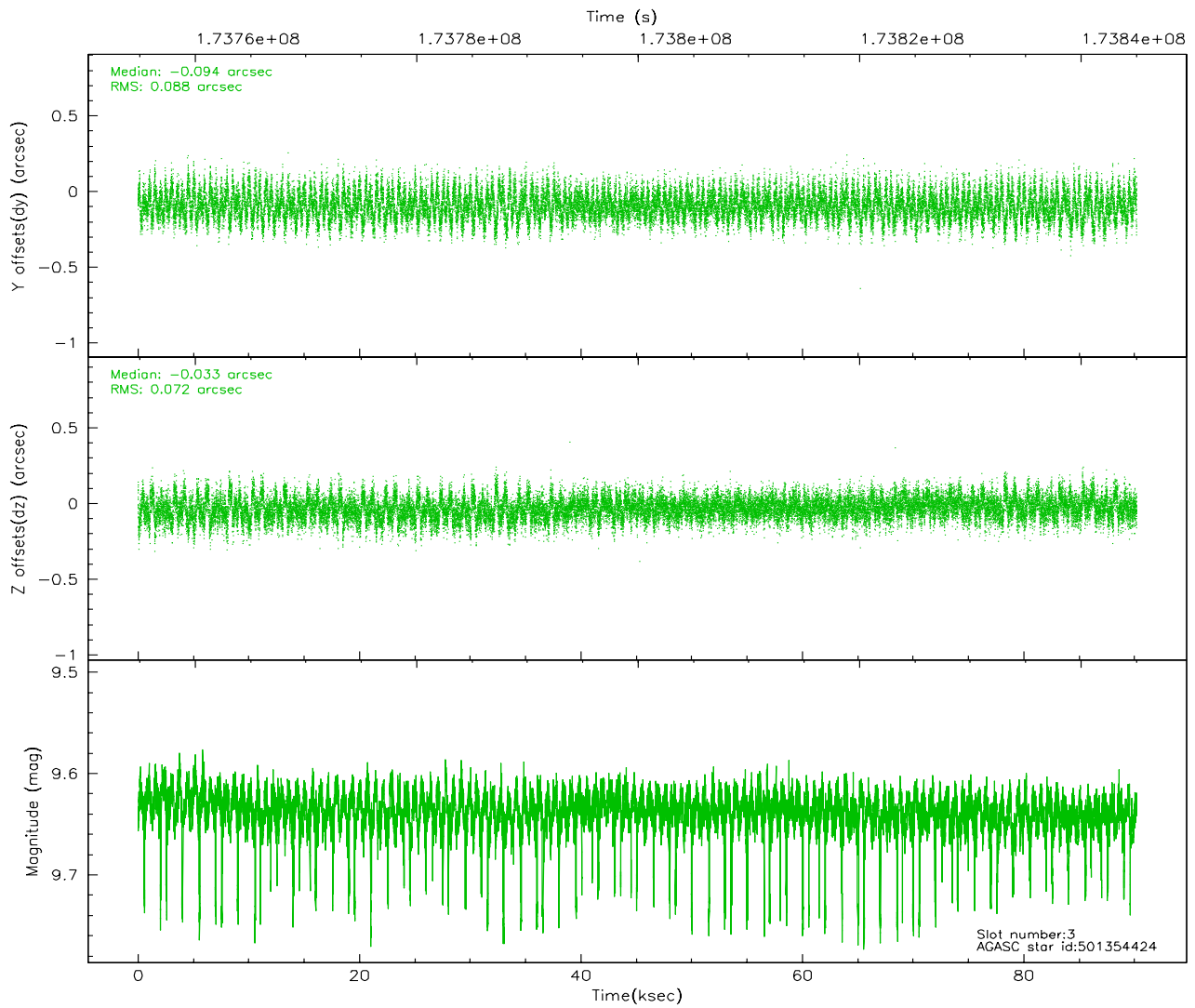
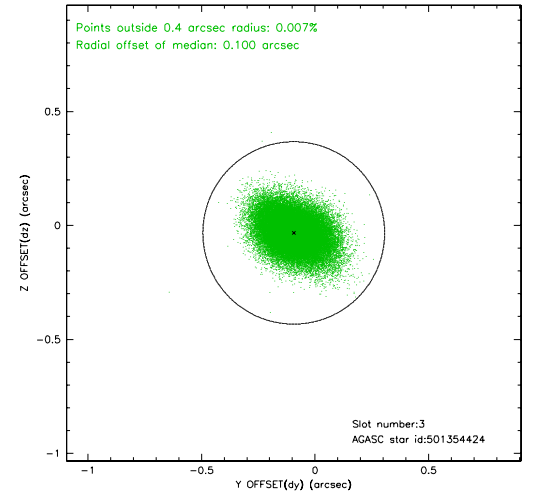
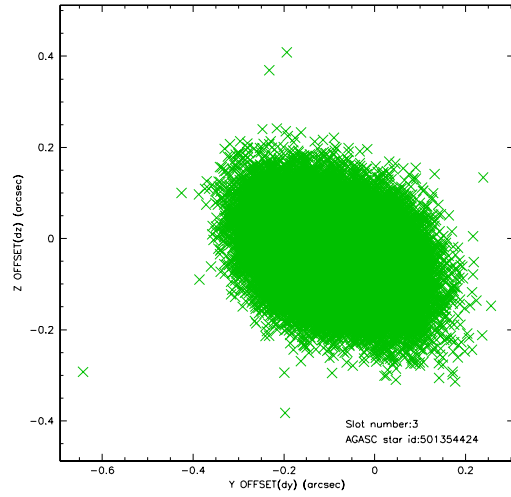


### Slot Statistics

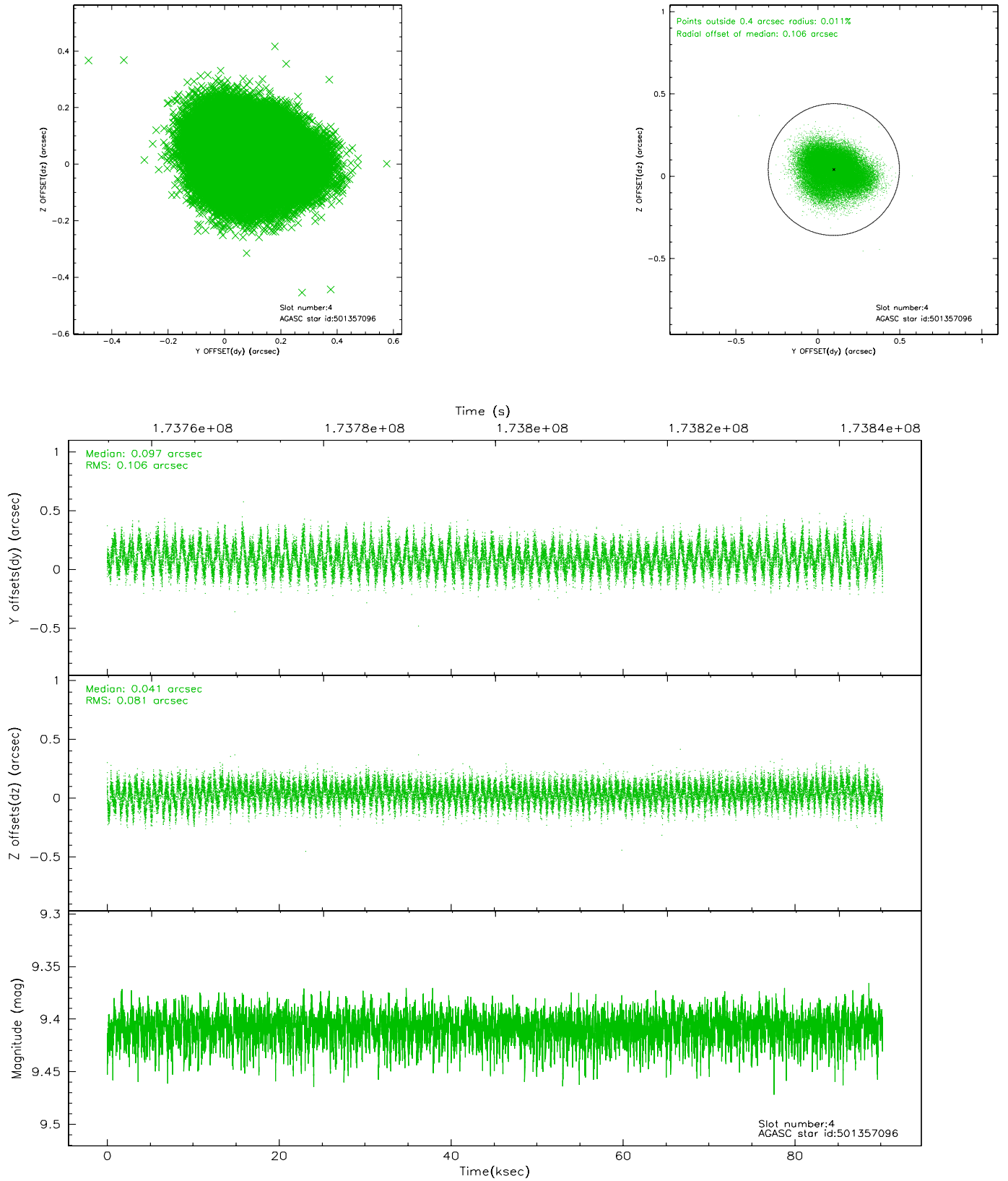
slot	status	id	mag	n_pts	med_dy	med_dz	dr1	dr2	ra	dec	mean_y	mean_z
0	FID	ACIS-S-1	7.18	21996	0.016	-0.052	0.013	0.030	0.000000	0.000000	936.13	-1728.17
1	FID	ACIS-S-5	7.23	21995	-0.011	0.016	0.018	0.031	0.000000	0.000000	-1812.92	169.57
2	FID	ACIS-S-6	7.35	21996	-0.028	0.046	0.013	0.042	0.000000	0.000000	401.76	813.44
3	GUIDE	501354424	9.64	43809	-0.094	-0.033	0.121	0.199	171.033348	53.552572	-1324.22	1801.54
4	GUIDE	501357096	9.41	43977	0.097	0.041	0.145	0.225	170.460696	52.558100	2169.01	335.02
5	GUIDE	501357376	9.34	43979	-0.072	0.069	0.114	0.183	169.850008	53.661633	-1889.06	-693.14
6	GUIDE	501357560	10.36	43958	0.067	-0.055	0.356	0.527	169.606603	52.563854	2009.65	-1527.76
7	GUIDE	501359640	8.92	43982	0.008	0.000	0.091	0.144	169.787525	53.309283	-634.60	-924.59

## 2.4 Star Slots

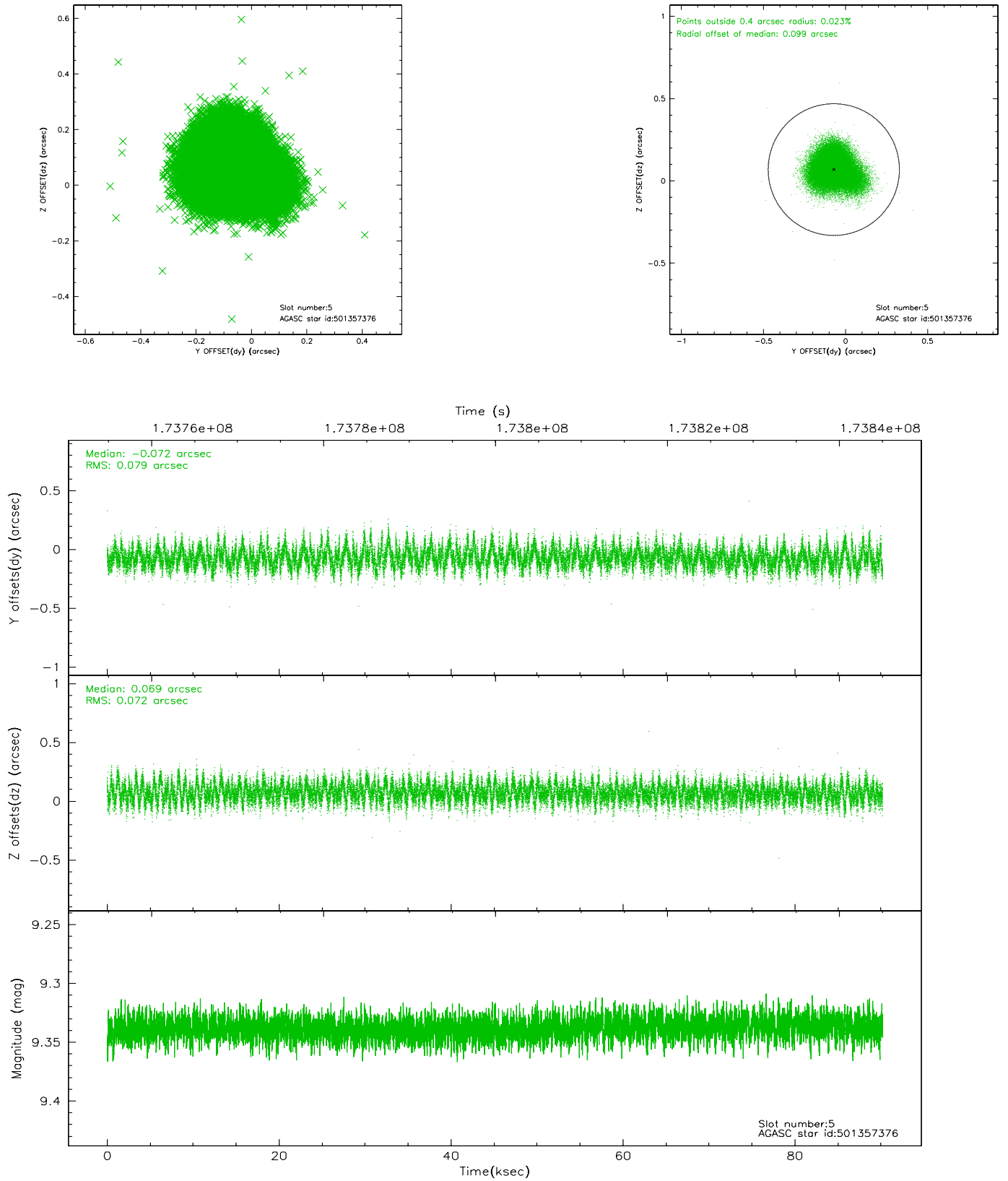
### 2.4.1 Slot 3



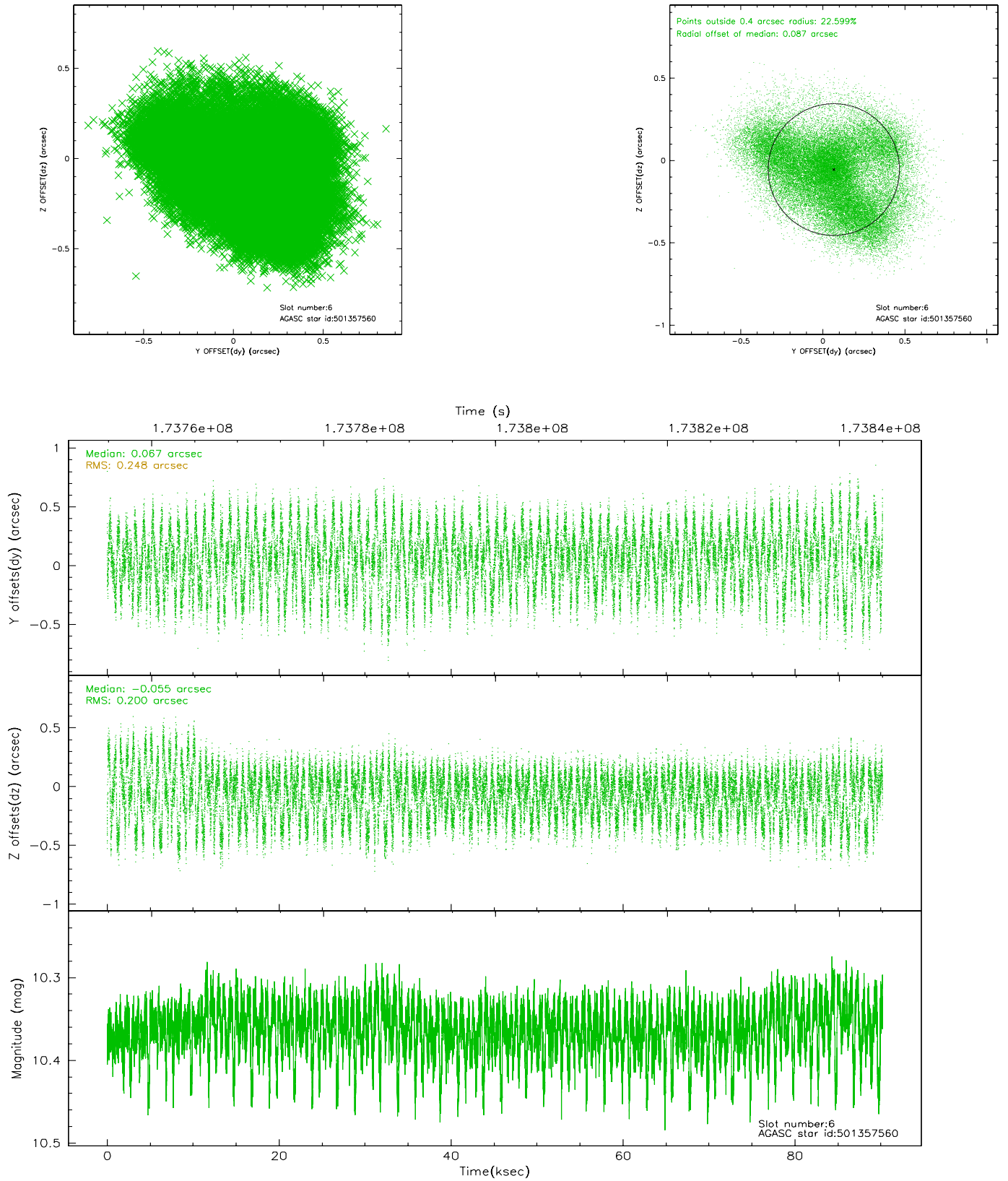
## 2.4.2 Slot 4



### 2.4.3 Slot 5

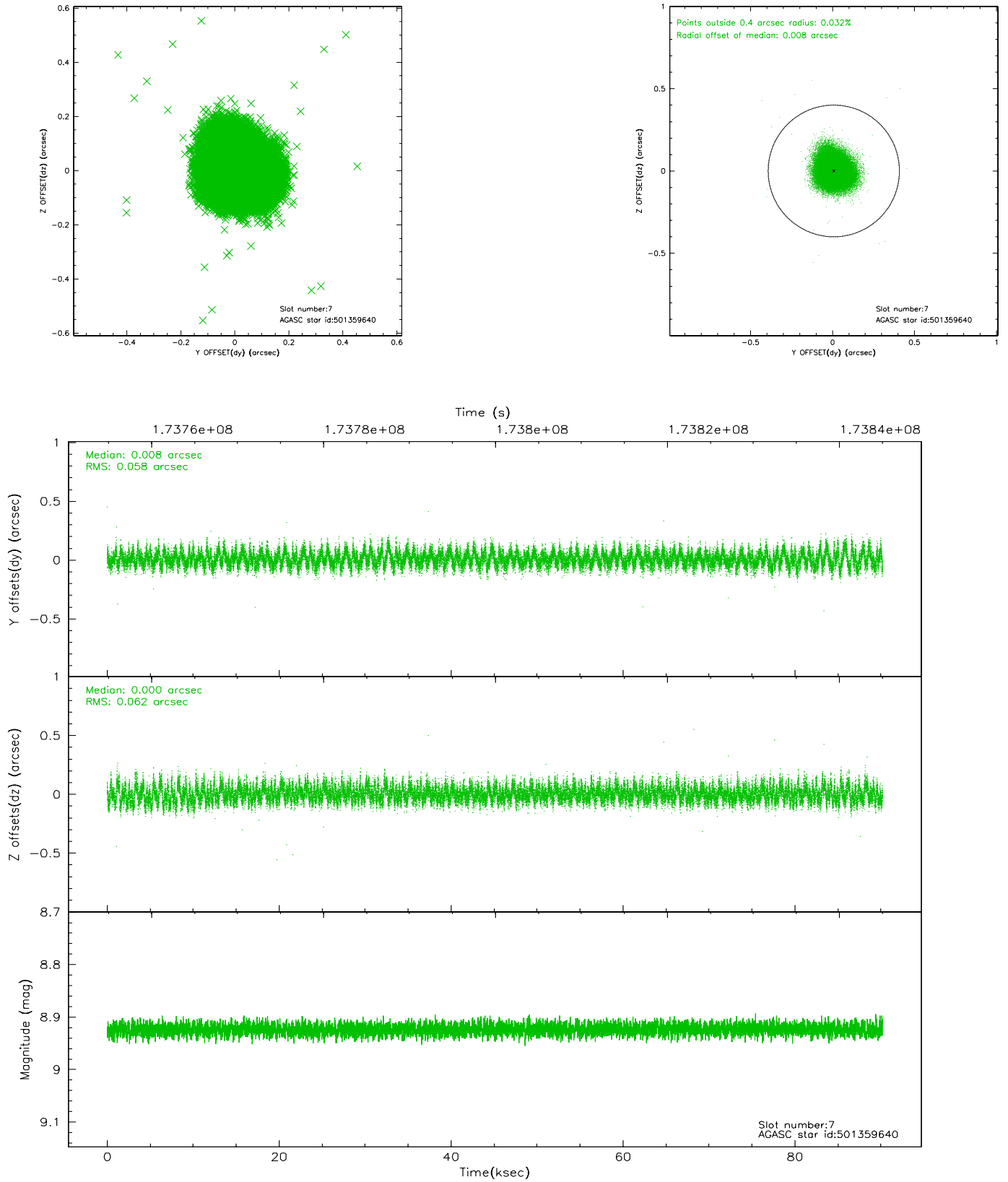


## 2.4.4 Slot 6



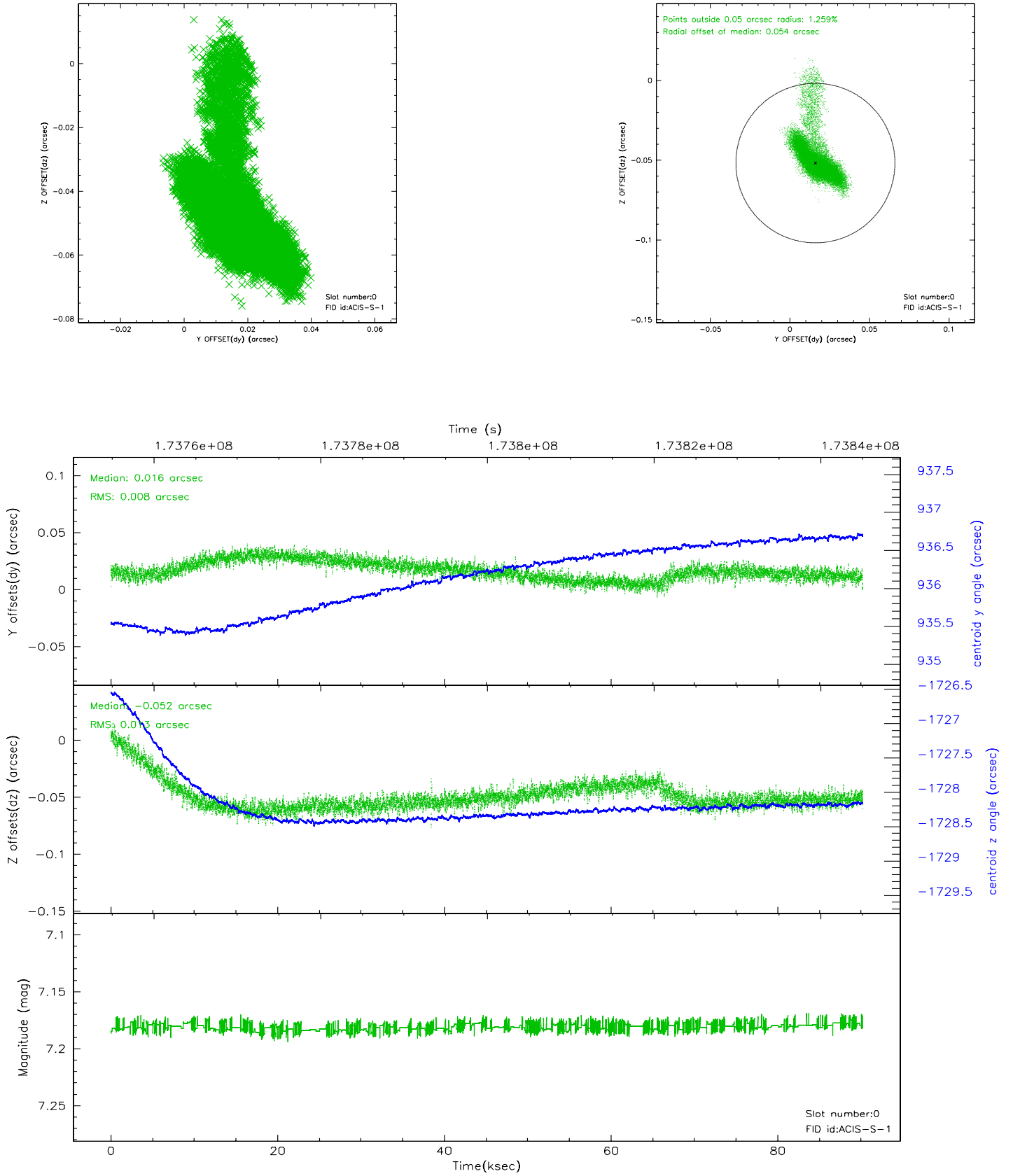


## 2.4.5 Slot 7

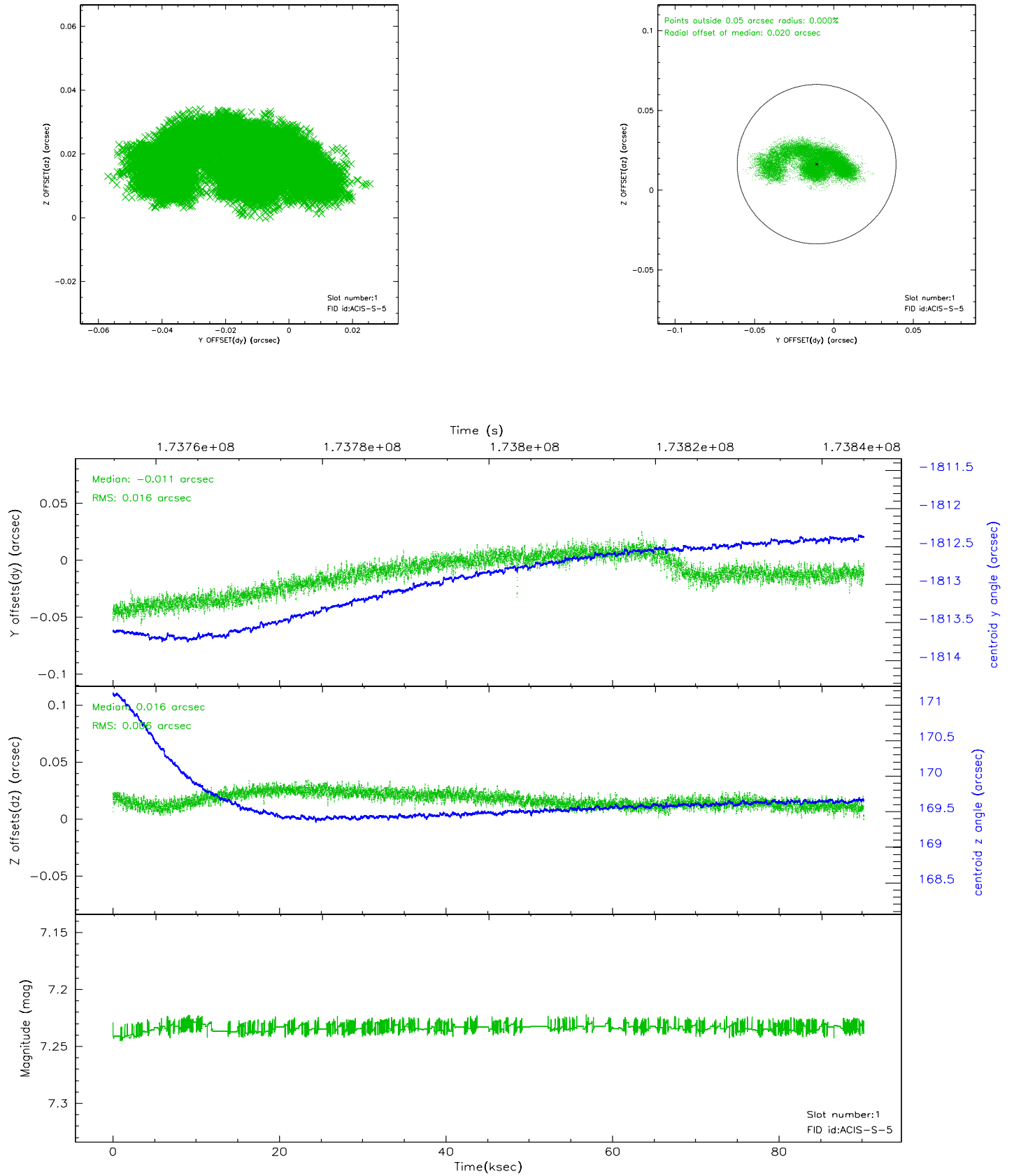


## 2.5 FID Slots

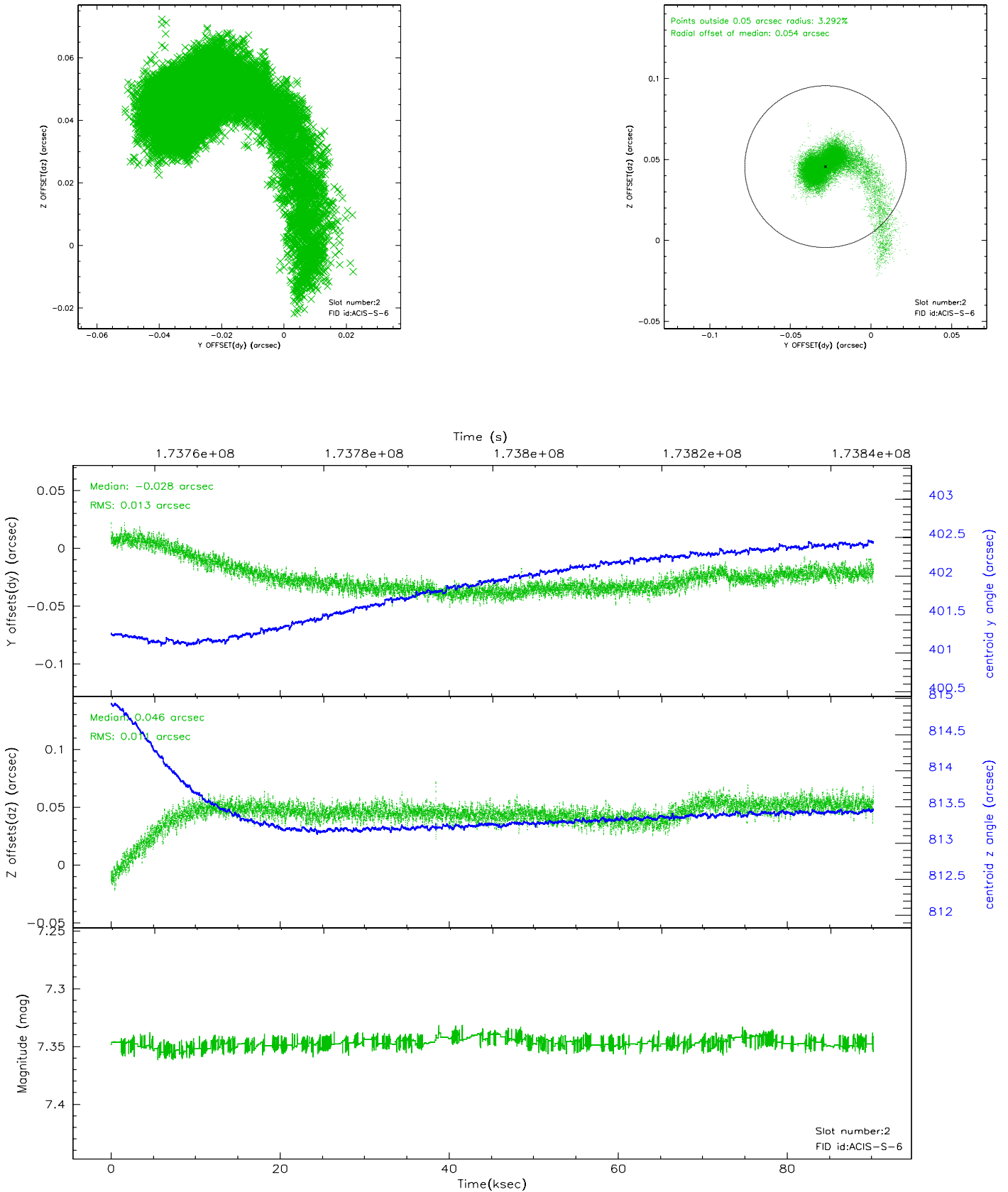
### 2.5.1 Slot 0



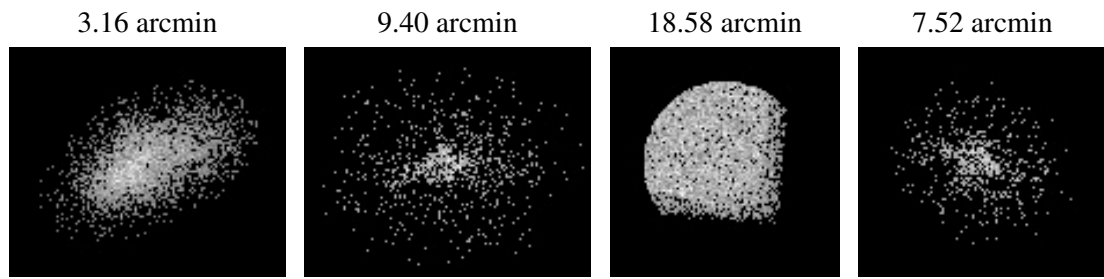
## 2.5.2 Slot 1



### 2.5.3 Slot 2



### 3 Point Sources



## A Summary

### A.1 Status

V&V Scientist	Beth Sundheim
V&V Date (YYYY-MM-DD)	2006.08.10
V&V Edition	1
V&V Disposition and Status	OK
V&V Charge Time	90.21

### A.2 Comments