

# V&V Reference Report

## L2 ASCDS Version : 8.4.5

Observation 3911 - L2 Version 3  
Chandra X-Ray Center

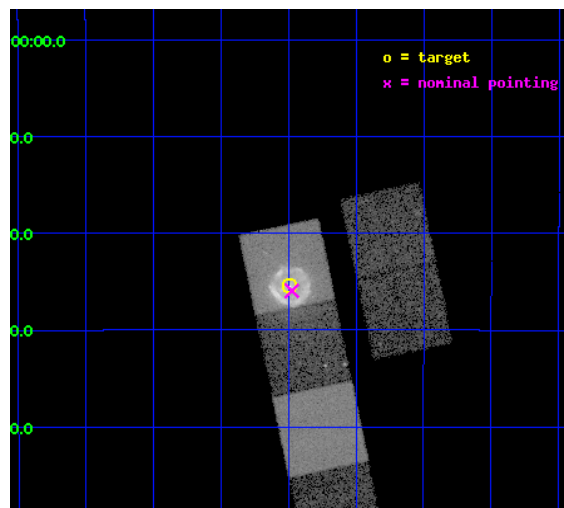
L2 Processing Date : Nov 1 2012

## Contents

<b>1</b>	<b>Front</b>	<b>2</b>
<b>2</b>	<b>OBI</b>	<b>3</b>
2.1	OBI . . . . .	3
2.1.1	Images . . . . .	3
2.1.2	Bias . . . . .	3
2.1.3	Parameters . . . . .	4
2.1.4	Events . . . . .	4
2.2	Compared Parameters . . . . .	5
2.3	Aspect . . . . .	6
2.4	Star Slots . . . . .	9
2.4.1	Slot 3 . . . . .	9
2.4.2	Slot 4 . . . . .	10
2.4.3	Slot 5 . . . . .	11
2.4.4	Slot 6 . . . . .	12
2.4.5	Slot 7 . . . . .	13
2.5	FID Slots . . . . .	14
2.5.1	Slot 0 . . . . .	14
2.5.2	Slot 1 . . . . .	15
2.5.3	Slot 2 . . . . .	16
<b>A</b>	<b>Summary</b>	<b>17</b>
A.1	Status . . . . .	17
A.2	Comments . . . . .	17

# 1 Front

seq_num	500390	Sequence number
obs_id	3911	Observation id
title	THE DYNAMICS OF THE PULSAR WIND NEBULA IN G11.2-0.3	Proposal title
observer	Dr. Mallory Roberts	Principal investigator
object	G11.2-0.3	Source name
dtcycle	0	&#160
cycle	P	events from which exps? Prim/Second/Both
ra_targ	272.8725	Observer's specified target RA [deg]
dec_targ	-19.423611	Observer's specified target Dec [deg]
ra_nom	272.86867083388	Nominal RA [deg]
dec_nom	-19.432581544789	Nominal Dec [deg]
roll_nom	258.15536226561	Nominal Roll [deg]
revision	3	Processing version of data
ontime	14785.839286596	Sum of GTIs [s]
livetime	14598.612086585	Livetime [s]
ontime2	14785.675126612	Sum of GTIs [s]
ontime3	14785.716166586	Sum of GTIs [s]
ontime4	14785.880326599	Sum of GTIs [s]
ontime5	14785.798246592	Sum of GTIs [s]
ontime6	14785.757206589	Sum of GTIs [s]
ontime7	14785.839286596	Sum of GTIs [s]
l2events	209746	Number of level 2 events

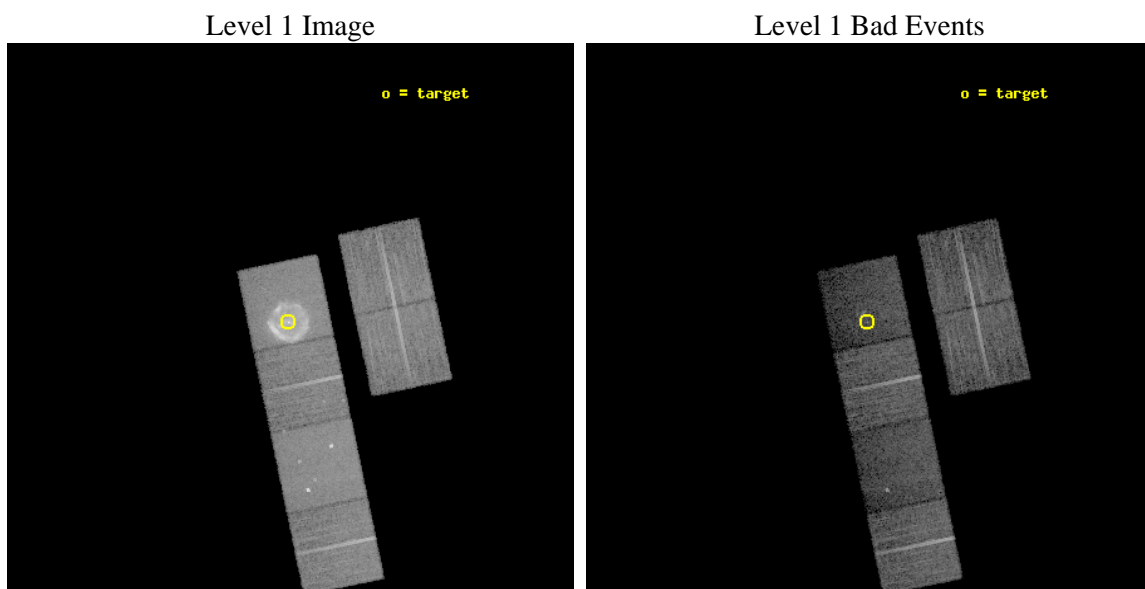




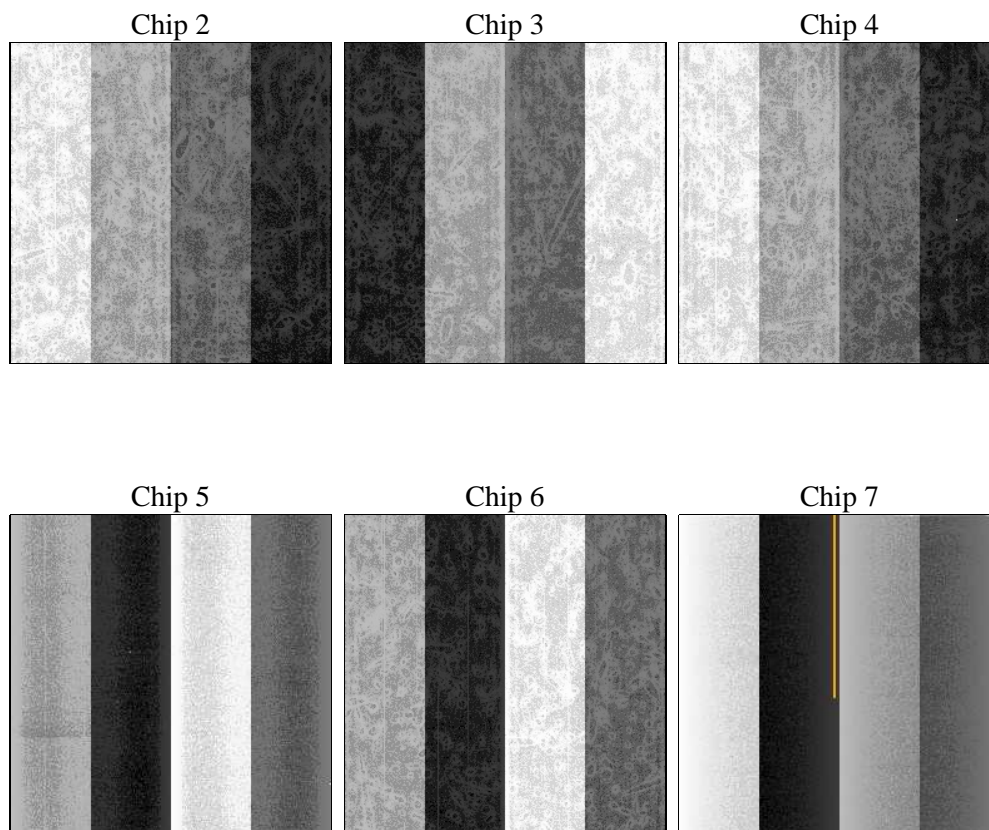
## 2 OBI

### 2.1 OBI

#### 2.1.1 Images



#### 2.1.2 Bias



### 2.1.3 Parameters

obi_num	1	Obi number	sched_exp_time	14825.000000	[s] Scheduled observation exposure time
ascdsver	8.4.5	Processing system revision	ontime	14785.839286596	Sum of GTIs [s]
caldsver	4.5.2	&#160	ontime2	14785.675126612	Sum of GTIs [s]
date	2012-11-01T10:38:01	Date and time of file creation	ontime3	14785.716166586	Sum of GTIs [s]
revision	3	Processing version of data	ontime4	14785.880326599	Sum of GTIs [s]
			ontime5	14785.798246592	Sum of GTIs [s]
			ontime6	14785.757206589	Sum of GTIs [s]
			ontime7	14785.839286596	Sum of GTIs [s]
			l1events	567671	Number of level 1 events

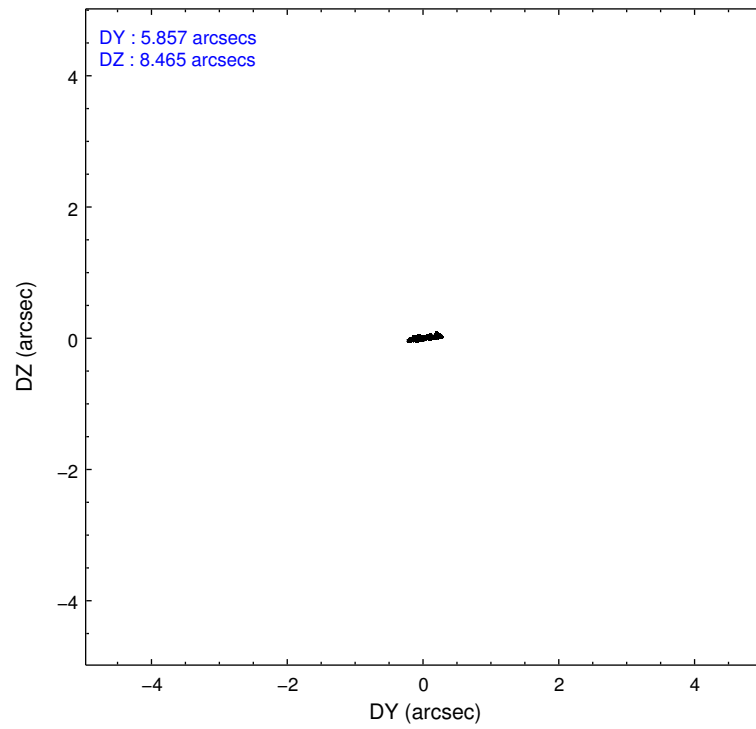
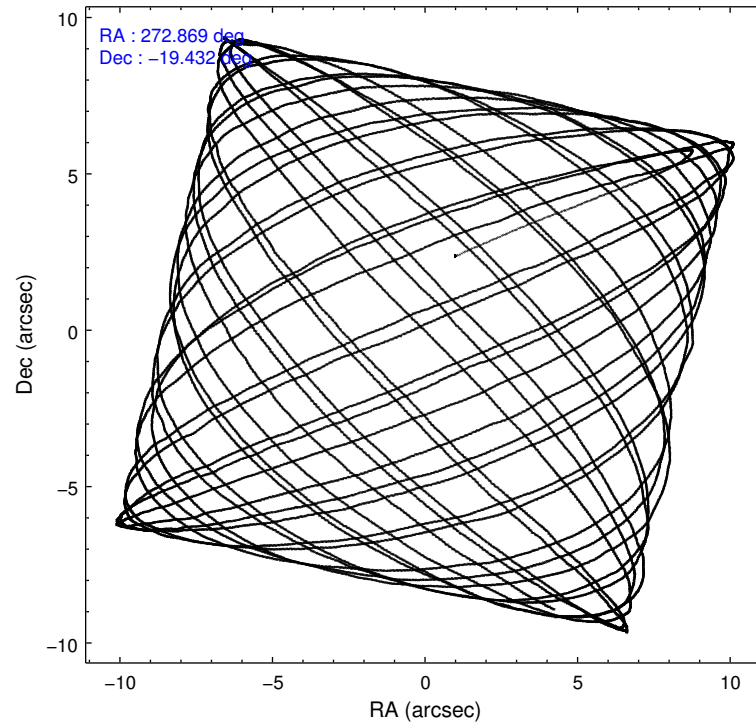
### 2.1.4 Events

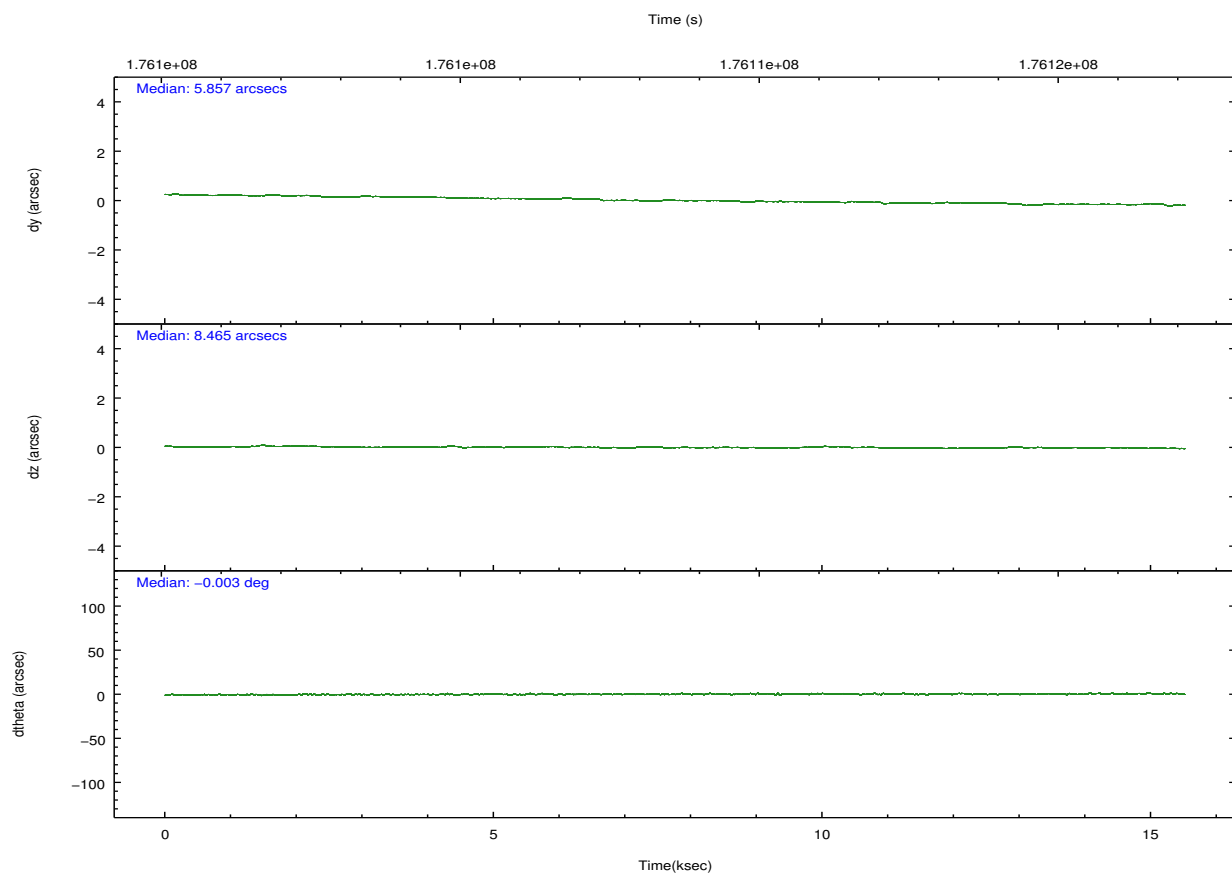
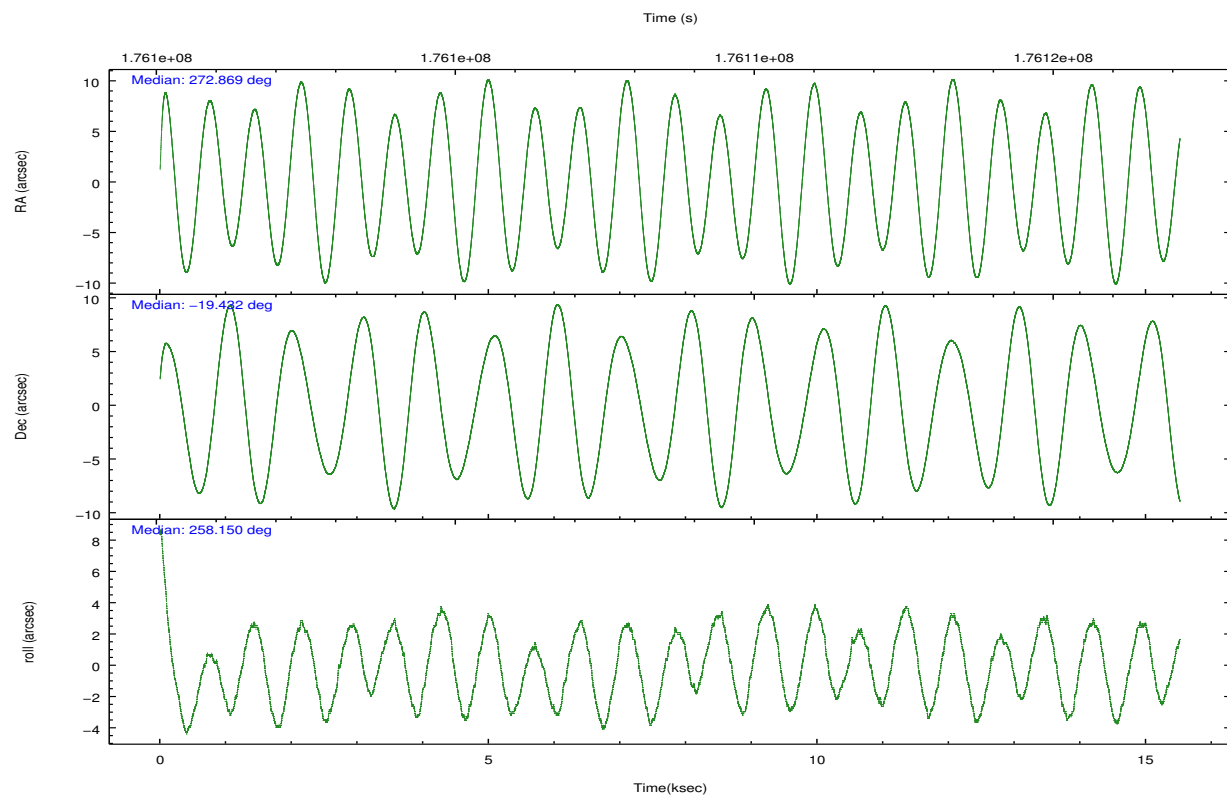
	ccd 2	ccd 3	ccd 4	ccd 5	ccd 6	ccd 7		ccd 2	ccd 3	ccd 4	ccd 5	ccd 6	ccd 7
level 1 events	75568	72694	82574	100903	76443	159489	grade 0 events	4362	4654	4275	9695	6880	24130
rejected events	66610	63441	73439	41220	64112	35154		5%	6%	5%	9%	9%	15%
rejected %	88%	87%	88%	40%	83%	22%	grade 1 events	36	46	78	548	43	98
								0%	0%	0%	0%	0%	0%
							grade 2 events	1689	1634	1867	17207	2053	30627
								2%	2%	2%	17%	2%	19%
							grade 3 events	788	878	916	3137	942	13730
								1%	1%	1%	3%	1%	8%
							grade 4 events	802	843	879	2970	921	13640
								1%	1%	1%	2%	1%	8%
							grade 5 events	1884	2234	2413	7350	2331	7791
								2%	3%	2%	7%	3%	4%
							grade 6 events	1323	1250	1200	26698	1538	42253
								1%	1%	1%	26%	2%	26%
							grade 7 events	64684	61155	70946	33298	61735	27220
								85%	84%	85%	33%	80%	17%

## 2.2 Compared Parameters

Parameter	Planned	Actual	Parameter	Planned	Actual
Instrument	ACIS	ACIS	Obspar format version number	7	7
Detector	ACIS-234567	ACIS-234567	Obspar file type	PREDICTED	ACTUAL
Grating	NONE	NONE	Obspar update status	NONE	UPDATED
Data mode	VFAINT	VFAINT	Number of optional ACIS chips dropped	0	0
Observation mode	POINTING	POINTING	On-chip summing requested	N	N
[deg] Pointing RA	272.859306	272.8686708338796	Subarray requested	NONE	NONE
[deg] Pointing Dec	-19.406820	-19.43258154478861	Alternating exposures requested	N	N
[deg] Pointing Roll	257.995615	258.1553622656077	[s] Primary exposure time	0.000000	3.2
[mm] SIM focus pos	-0.684267	-0.6828225247311905			
[mm] SIM defocus	0	0.001444936568705701			
[mm] SIM translation stage pos	-190.132523	-190.1400660498719			
[mm] SIM translation stage offset	0	0.00754346686406393			
[s] Observation start time (MET)	176101532.184000	176100316.07922			
Observation start date	2003-08-01T05:04:28	2003-08-01T04:45:16			
[s] Observation end time (MET)	176116357.184000	176116862.14243			
Observation end date	2003-08-01T09:11:33	2003-08-01T09:21:02			
Read mode	TIMED	TIMED			

## 2.3 Aspect



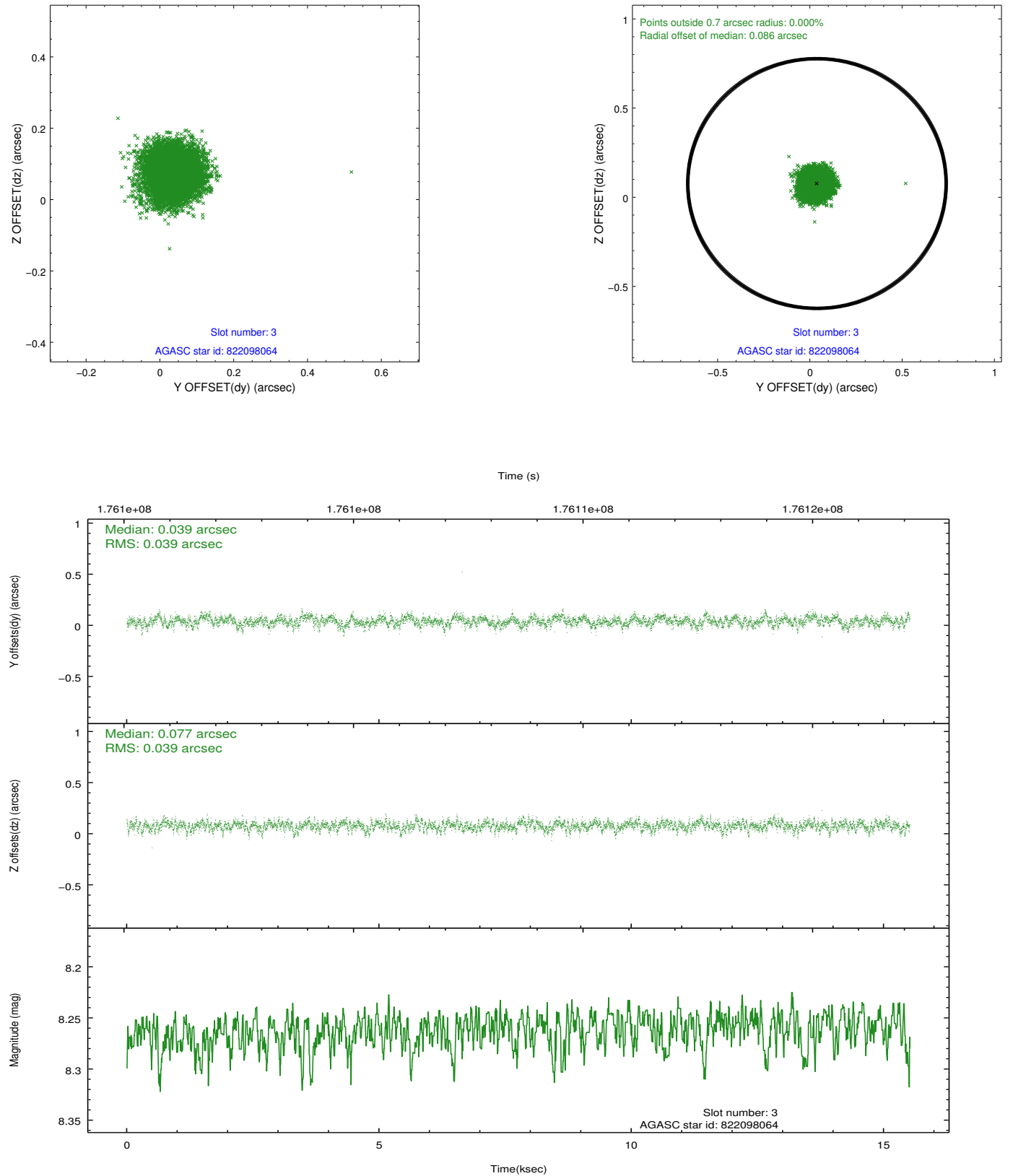


### Slot Statistics

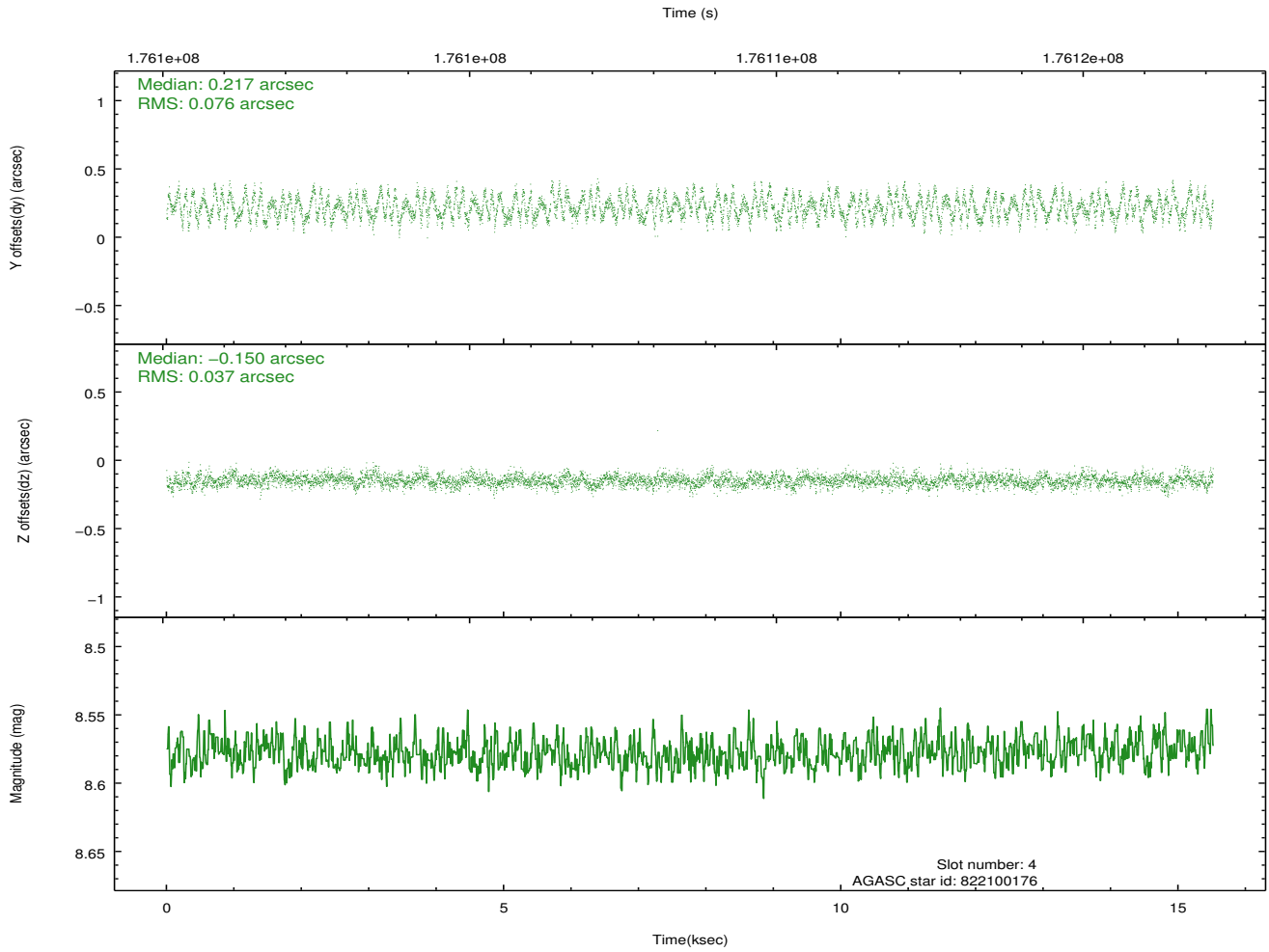
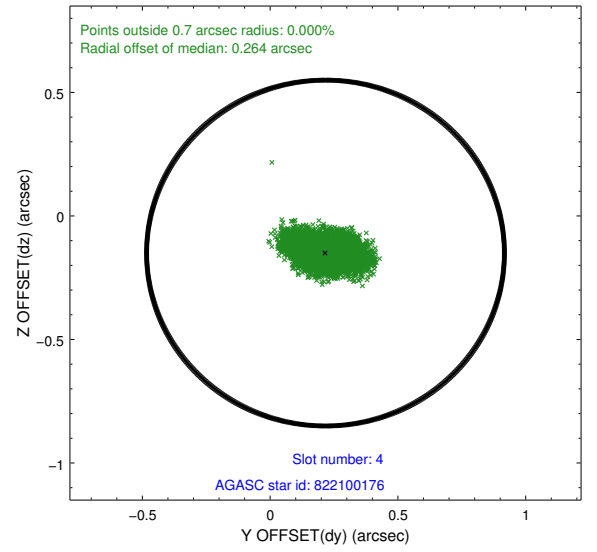
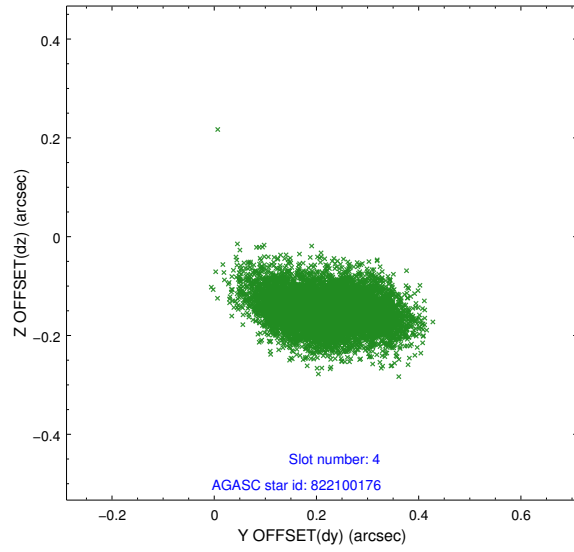
slot	status	id	mag	n_pts	med_dy	med_dz	dr1	dr2	ra	dec	mean_y	mean_z
0	FID	ACIS-S-2	7.10	3785	-0.035	-0.041	0.007	0.011	0.000000	0.000000	-758.65	-1729.70
1	FID	ACIS-S-4	7.21	3785	0.062	0.028	0.007	0.012	0.000000	0.000000	2154.62	178.52
2	FID	ACIS-S-5	7.23	3786	-0.058	0.022	0.007	0.012	0.000000	0.000000	-1811.12	172.56
3	GUIDE	822098064	8.26	7571	0.039	0.077	0.058	0.095	273.233974	-19.745214	929.05	1495.76
4	GUIDE	822100176	8.58	7571	0.217	-0.150	0.090	0.147	272.112888	-19.868886	2158.95	-2124.42
5	GUIDE	822103320	9.08	7571	0.091	0.120	0.078	0.126	273.198291	-20.140480	2346.74	1670.59
6	GUIDE	821572840	8.79	7567	-0.252	-0.054	0.069	0.113	272.287378	-18.702558	-2070.69	-2434.21
7	GUIDE	822086368	8.94	7570	-0.099	0.009	0.105	0.167	273.643156	-19.056339	-1783.42	2347.48

## 2.4 Star Slots

### 2.4.1 Slot 3

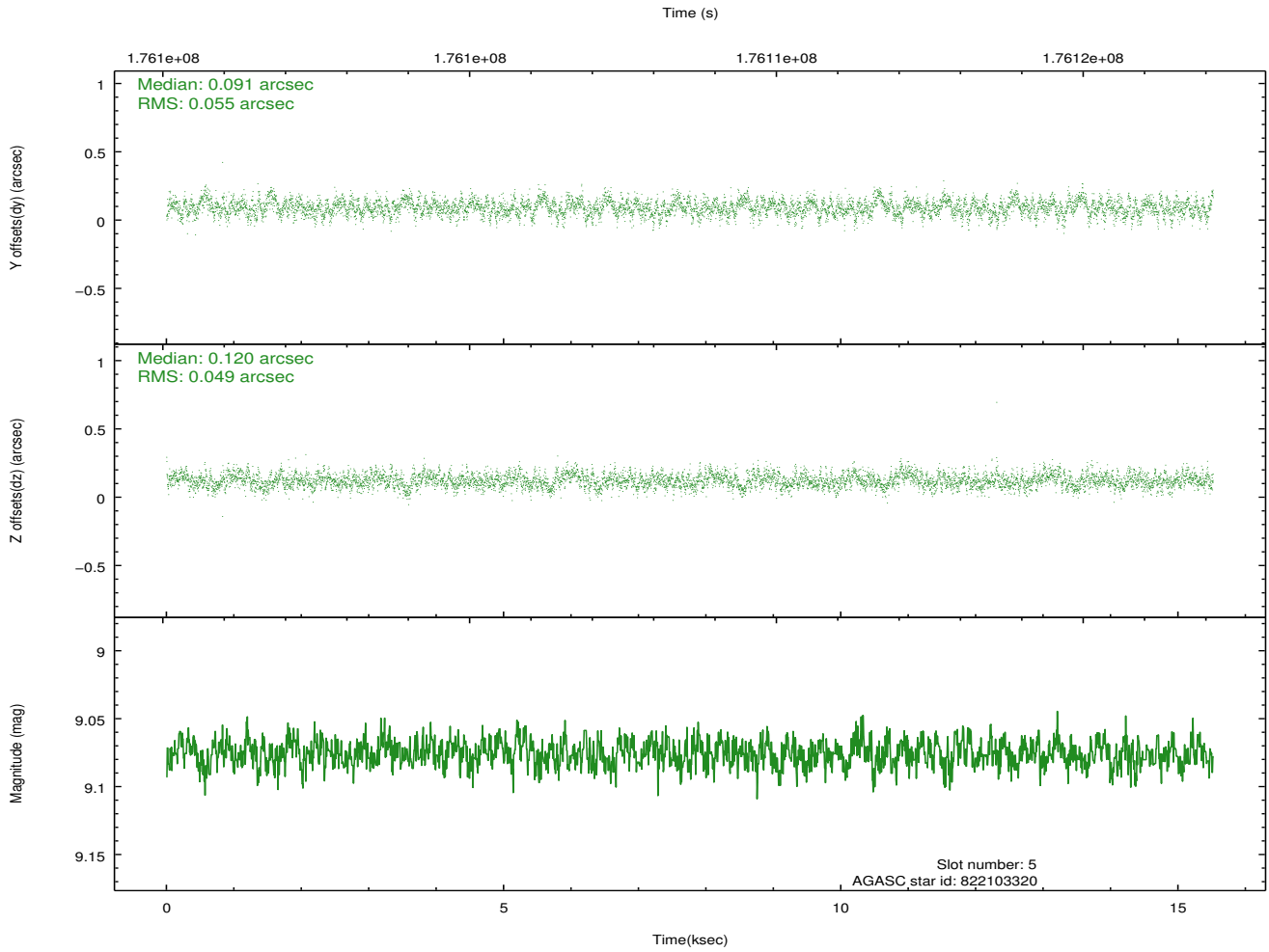
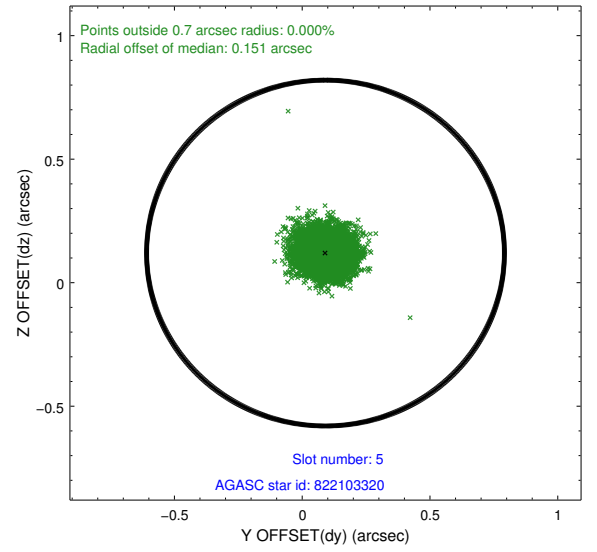
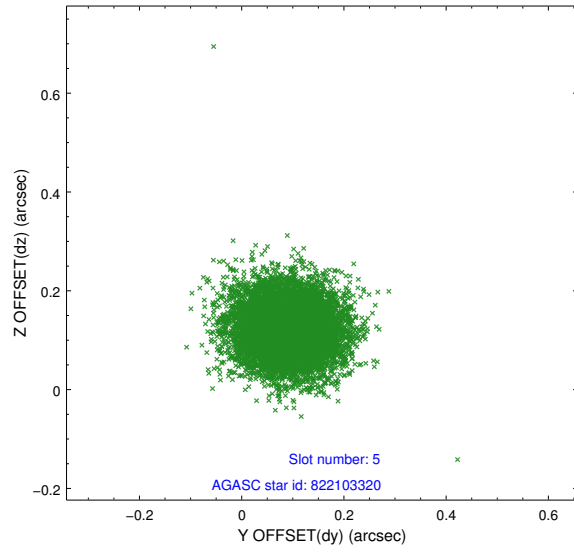


## 2.4.2 Slot 4

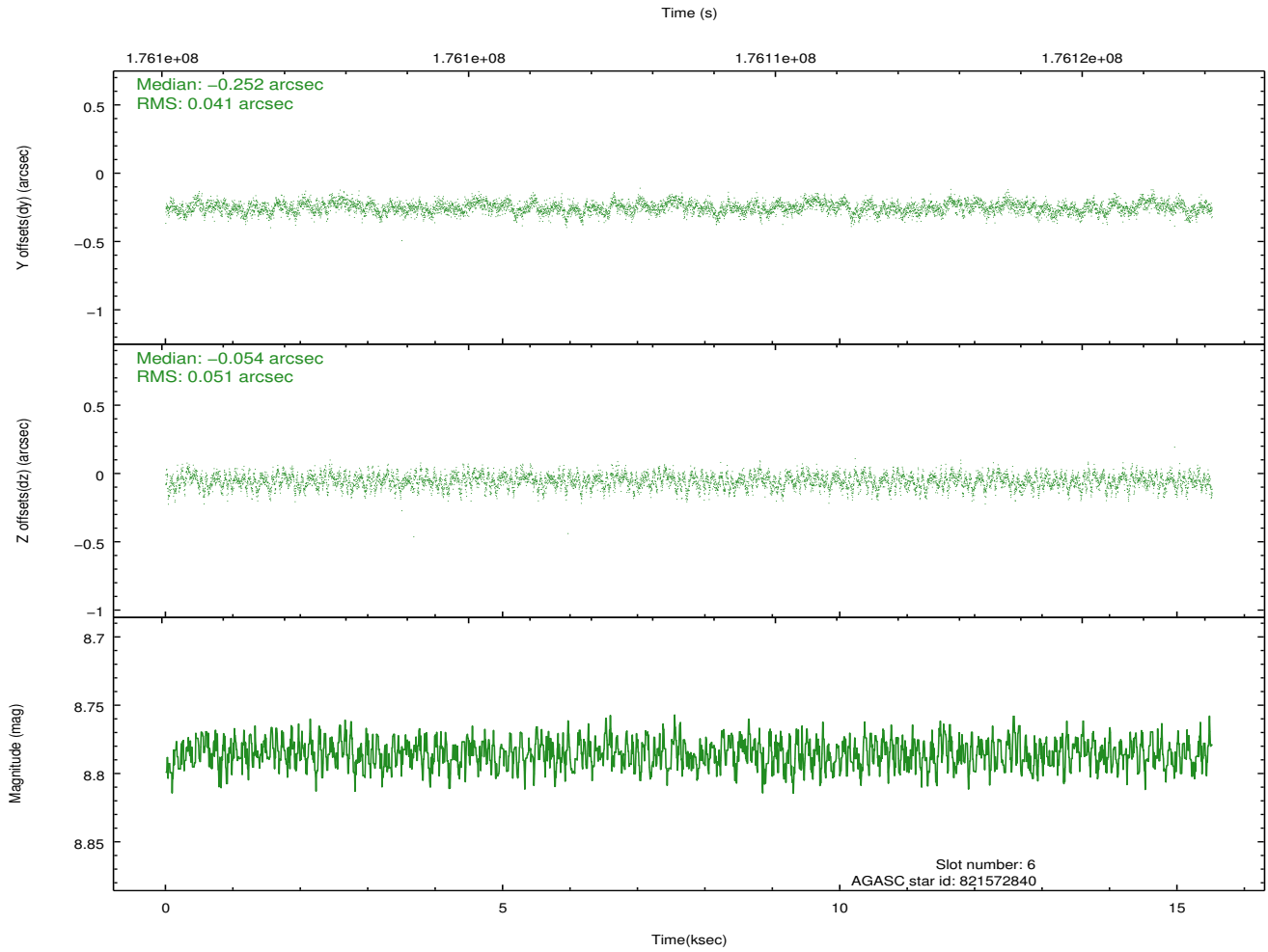
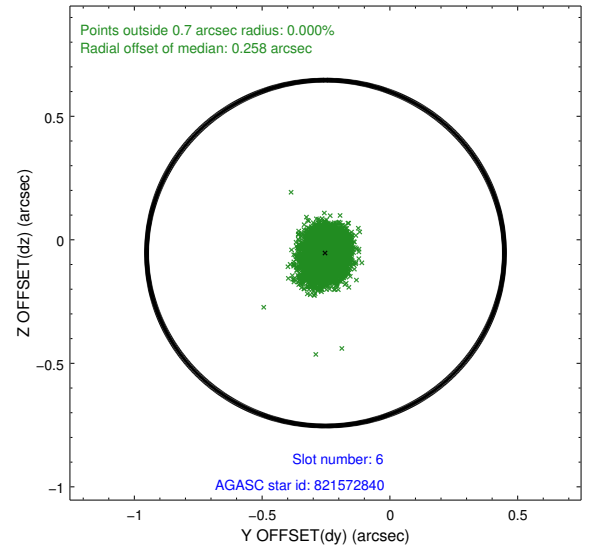
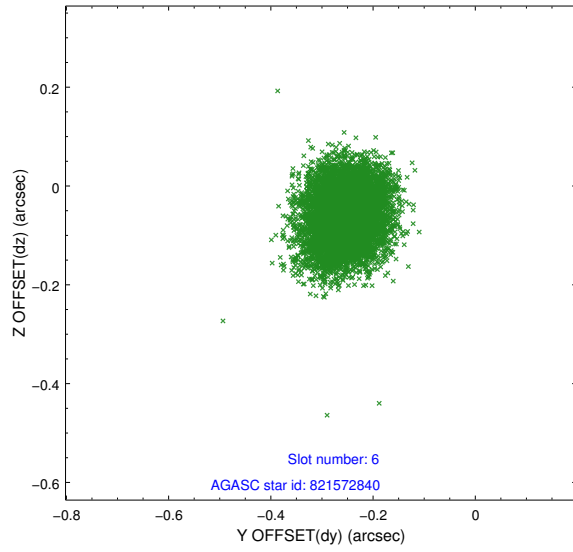




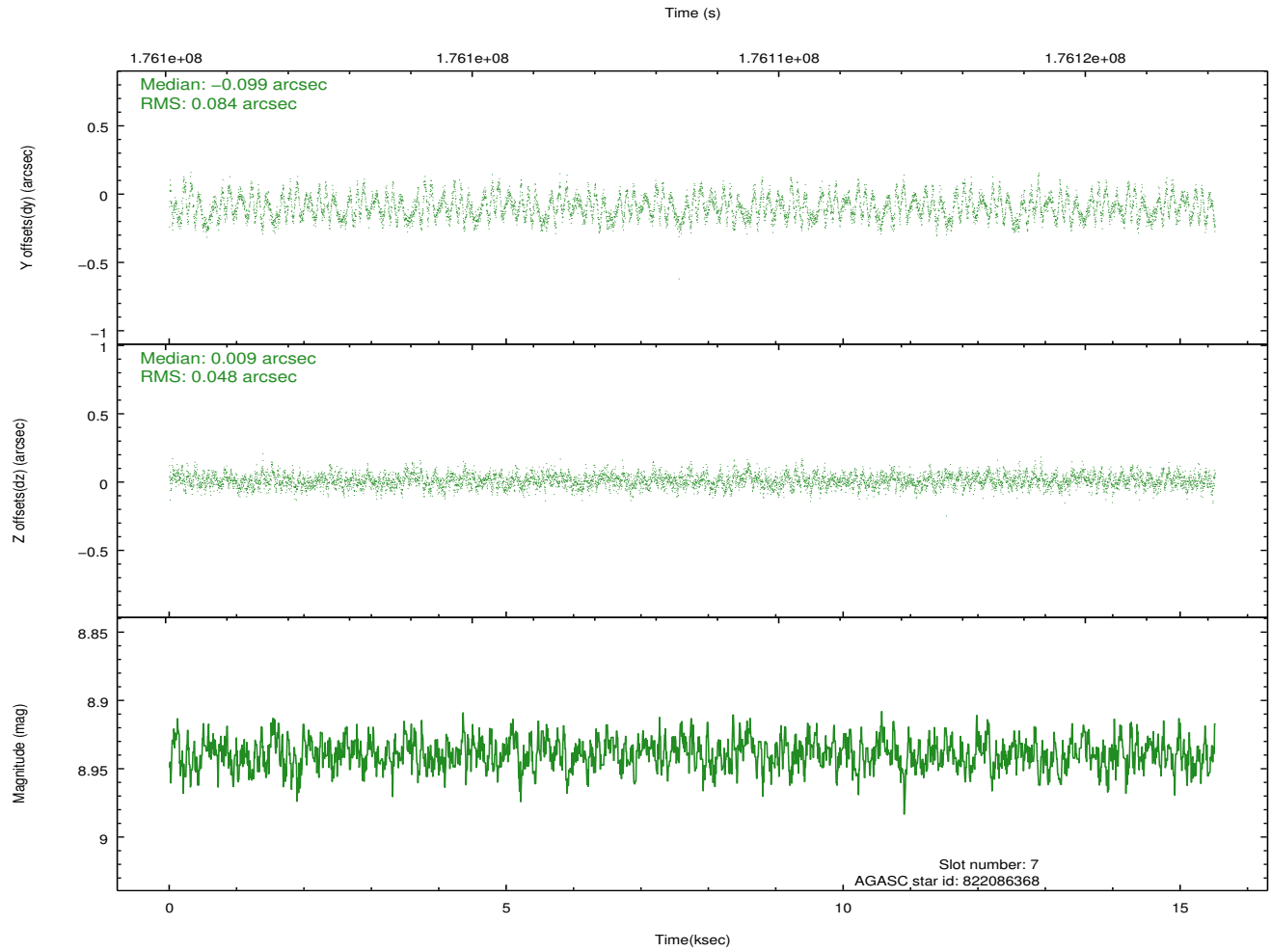
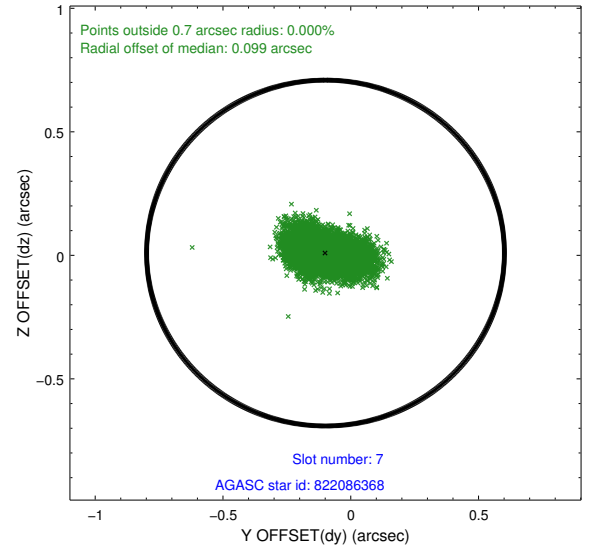
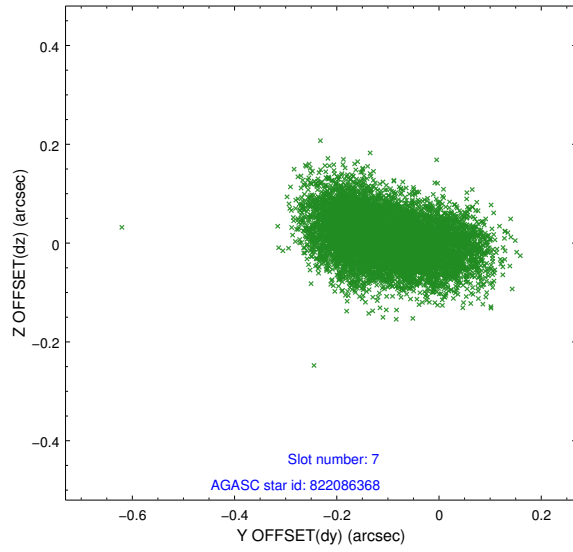
### 2.4.3 Slot 5



## 2.4.4 Slot 6

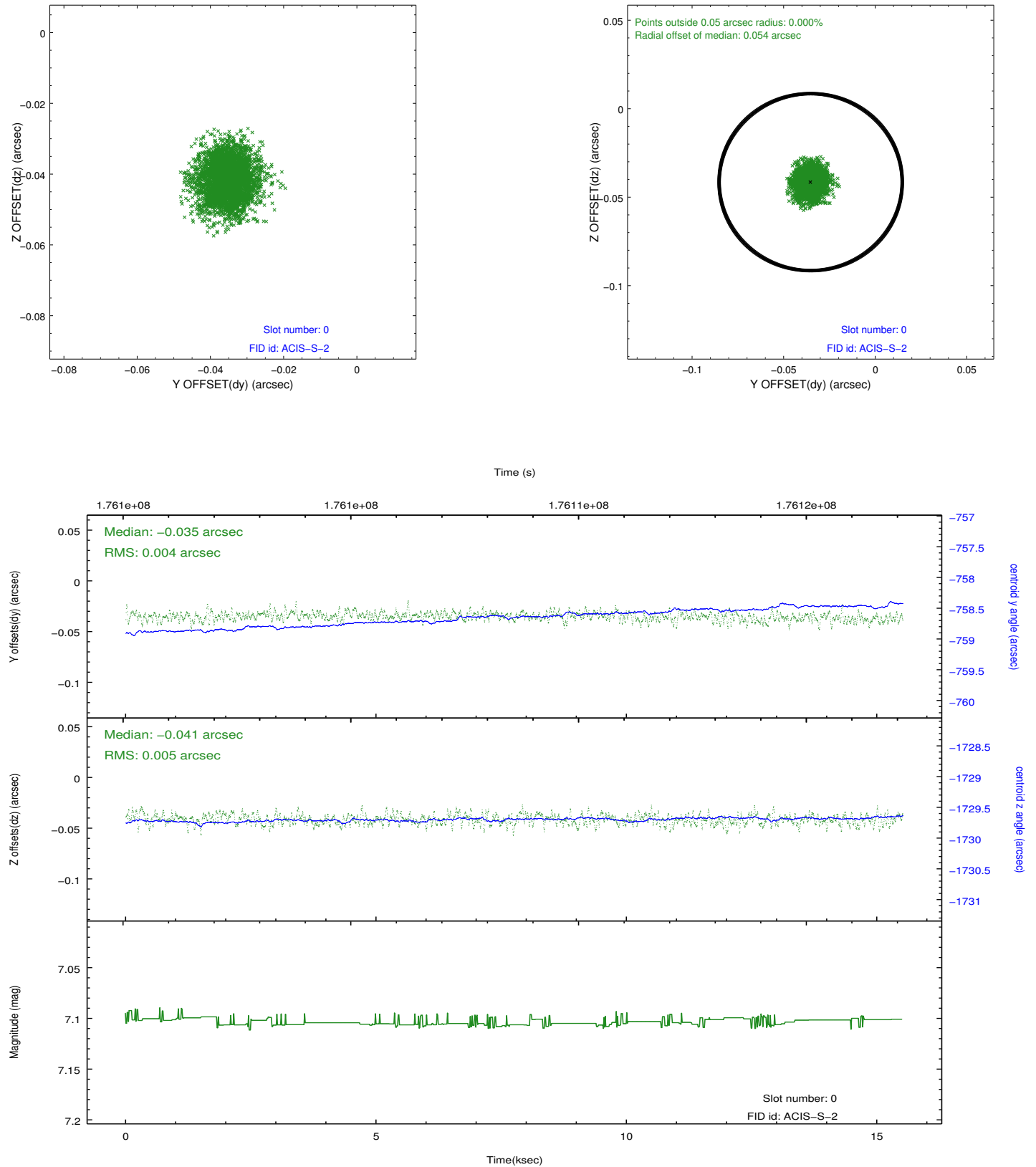


## 2.4.5 Slot 7

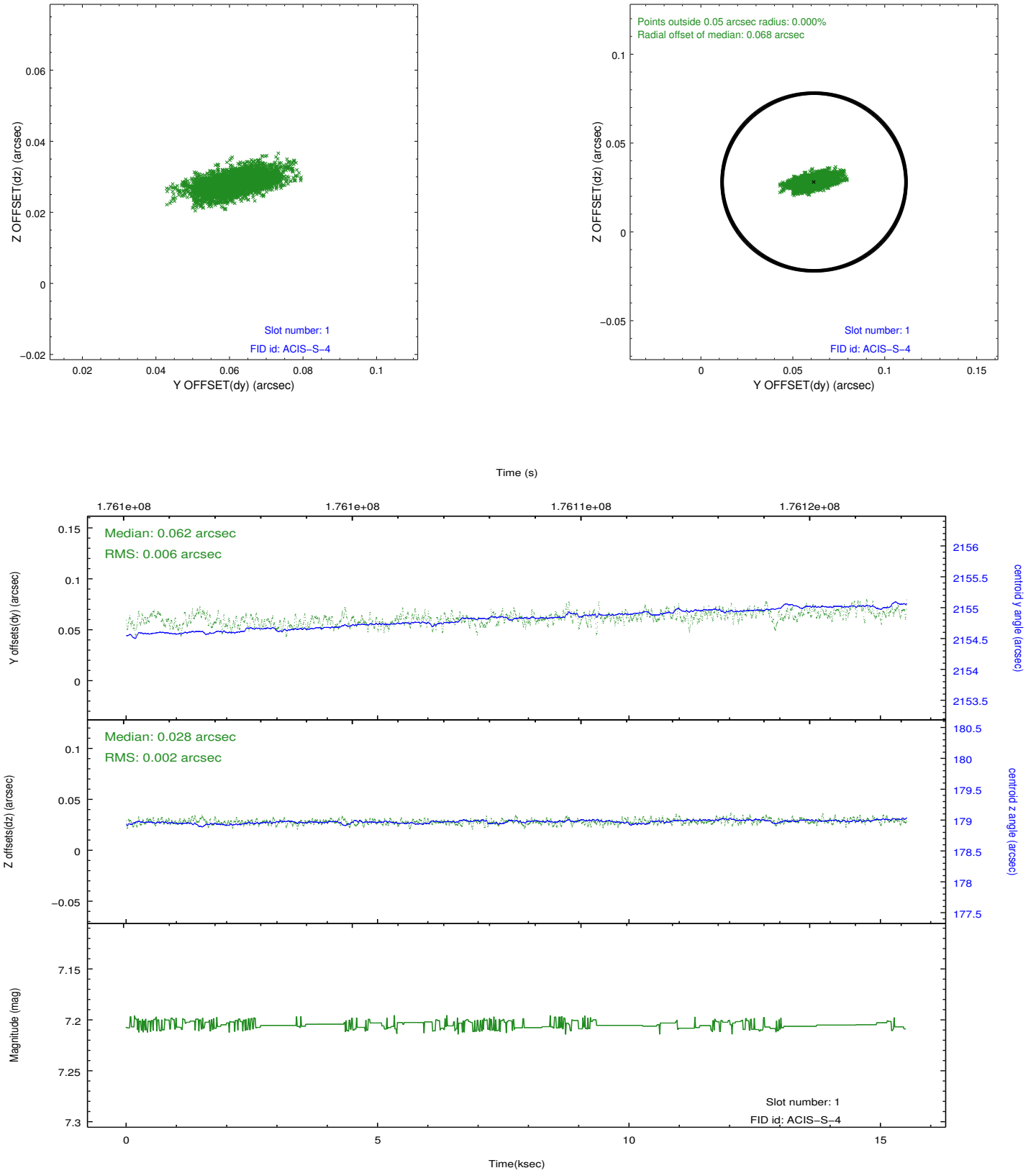


## 2.5 FID Slots

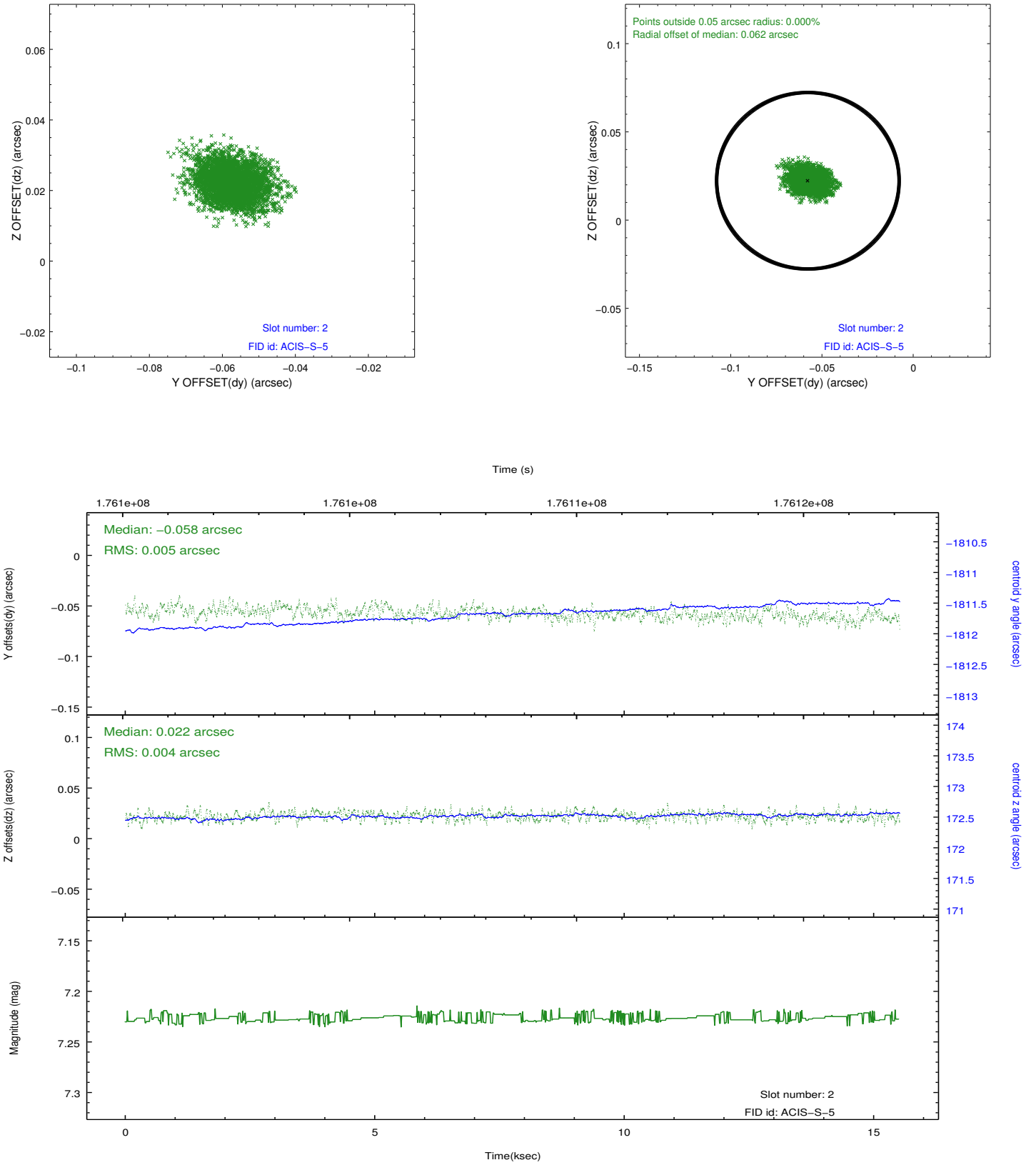
### 2.5.1 Slot 0



## 2.5.2 Slot 1



### 2.5.3 Slot 2



## **A Summary**

### **A.1 Status**

V&V Scientist	Jen Lauer
V&V Date (YYYY-MM-DD)	2012.11.27
V&V Edition	1
V&V Disposition and Status	OK
V&V Charge Time	14.787

### **A.2 Comments**