

V&V Reference Report

L2 ASCDS Version : 7.6.8

Observation 3911 - L2 Version 001
Chandra X-Ray Center

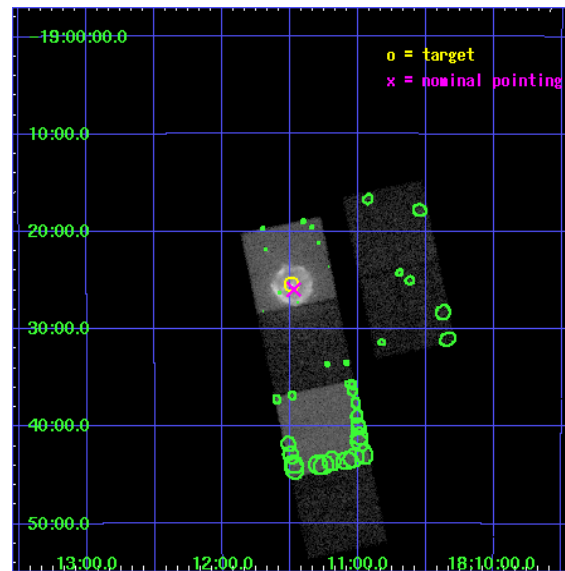
L2 Processing Date : Jul 12 2006

Contents

1	Front	2
2	OBI	3
2.1	OBI	3
2.1.1	Images	3
2.1.2	Bias	3
2.1.3	Parameters	4
2.1.4	Events	4
2.2	Compared Parameters	5
2.3	Aspect	6
2.4	Star Slots	9
2.4.1	Slot 3	9
2.4.2	Slot 4	10
2.4.3	Slot 5	11
2.4.4	Slot 6	12
2.4.5	Slot 7	13
2.5	FID Slots	14
2.5.1	Slot 0	14
2.5.2	Slot 1	15
2.5.3	Slot 2	16
3	Point Sources	17
A	Summary	18
A.1	Status	18
A.2	Comments	18

1 Front

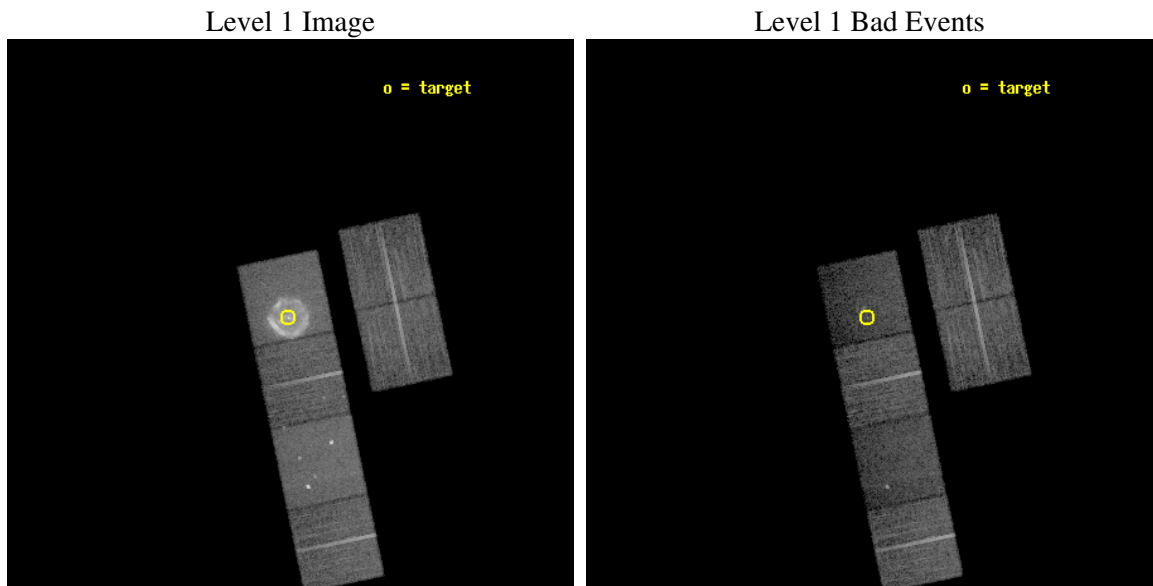
seq_num	500390
obs_id	3911
title	THE DYNAMICS OF THE PULSAR WIND NEBULA IN G11.2-0.3
observer	Dr. Mallory Roberts
object	G11.2-0.3
dtcycle	0
cycle	P
ra_targ	272.8725
dec_targ	-19.423611
ra_nom	272.86867696025
dec_nom	-19.432554373642
roll_nom	258.15536429799
revision	2
ontime	14787.199944913
livetime	14599.955515428
ontime2	14787.199944913
ontime3	14787.199944913
ontime4	14787.199944913
ontime5	14787.199944913
ontime6	14787.199944913
ontime7	14787.199944913
l2events	204491



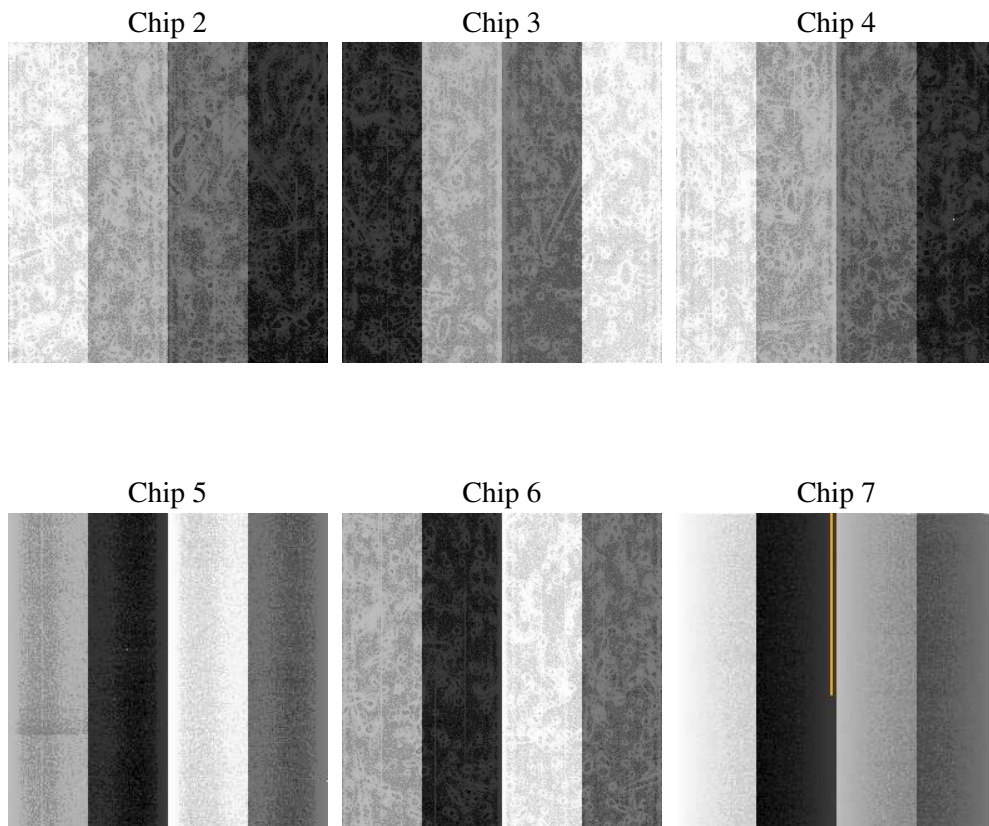
2 OBI

2.1 OBI

2.1.1 Images



2.1.2 Bias



2.1.3 Parameters

obi_num	1
ascdsver	7.6.8
caldsver	3.2.2
date	2006-07-12T17:47:17
revision	2

sched_exp_time	14825.000000
ontime	14791.95790118
ontime2	14791.95790118
ontime3	14791.95790118
ontime4	14791.95790118
ontime5	14791.95790118
ontime6	14791.95790118
ontime7	14791.95790118
l1events	567671

2.1.4 Events

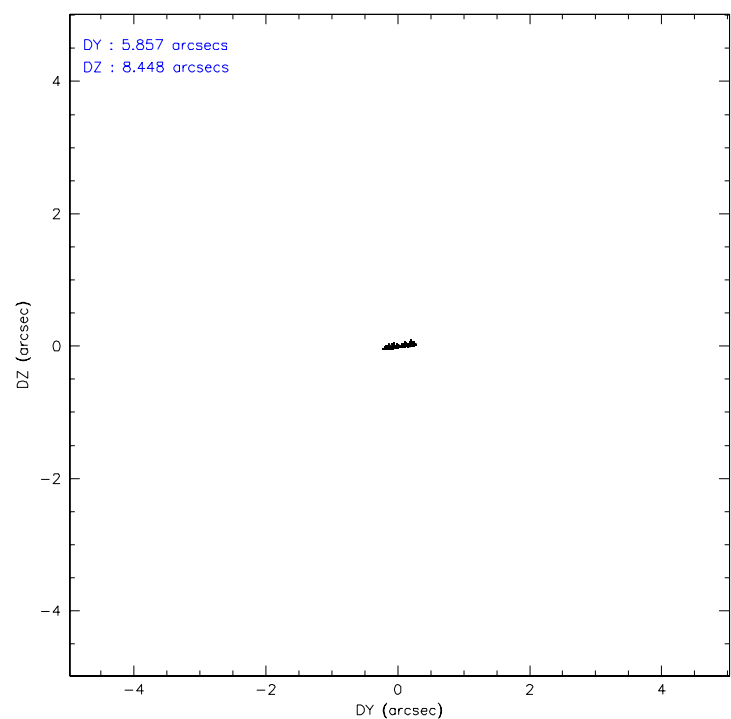
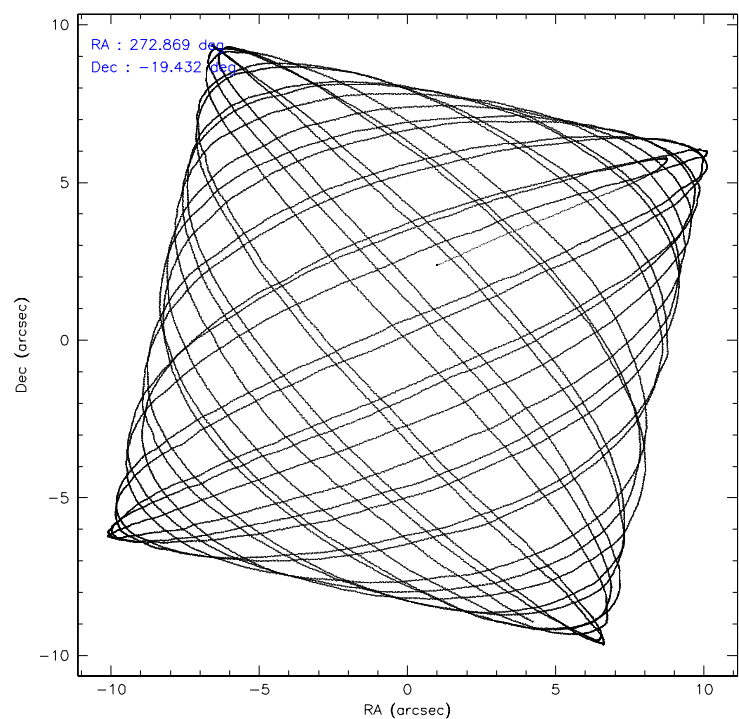
	ccd 2	ccd 3	ccd 4	ccd 5	ccd 6	ccd 7
level 1 events	75568	72694	82574	100903	76443	159489
rejected events	66607	63437	73438	43348	64110	38393
rejected %	88%	87%	88%	42%	83%	24%

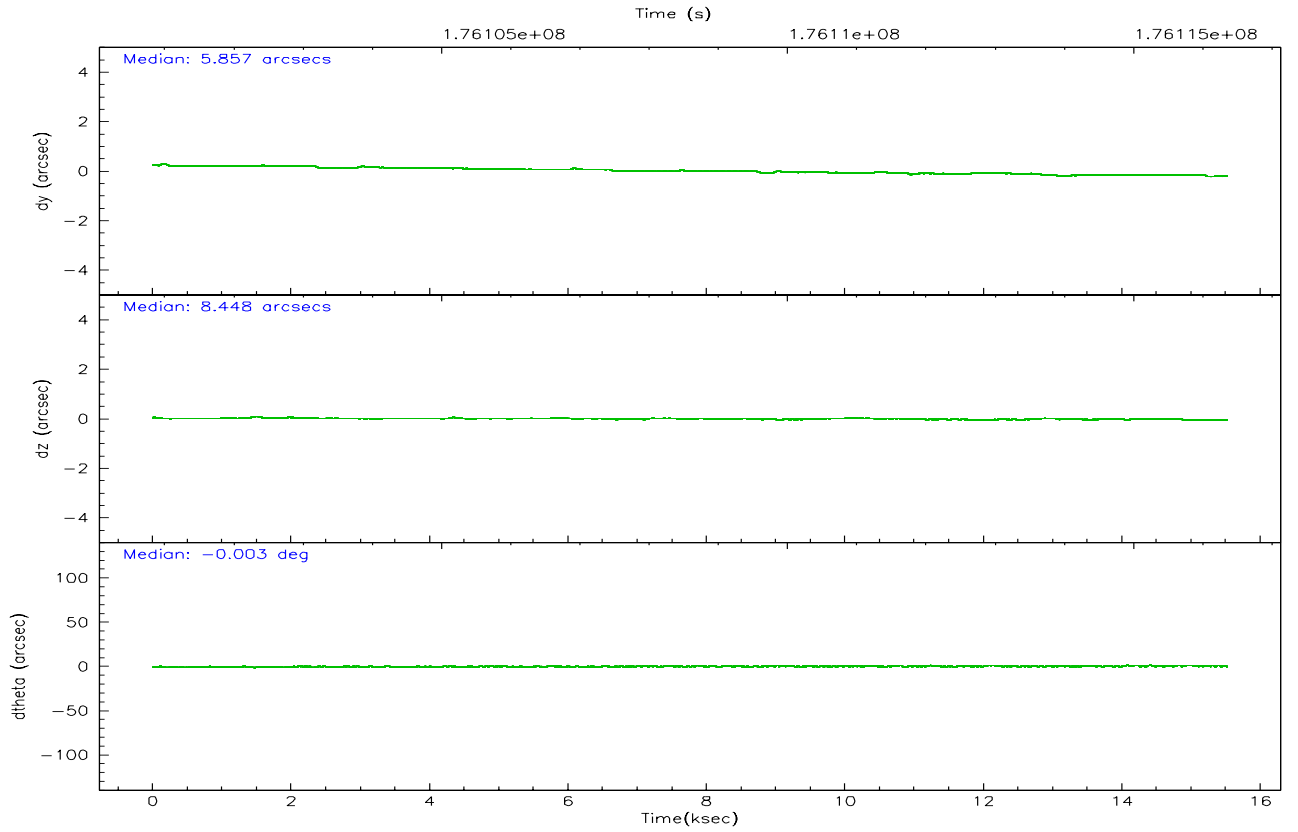
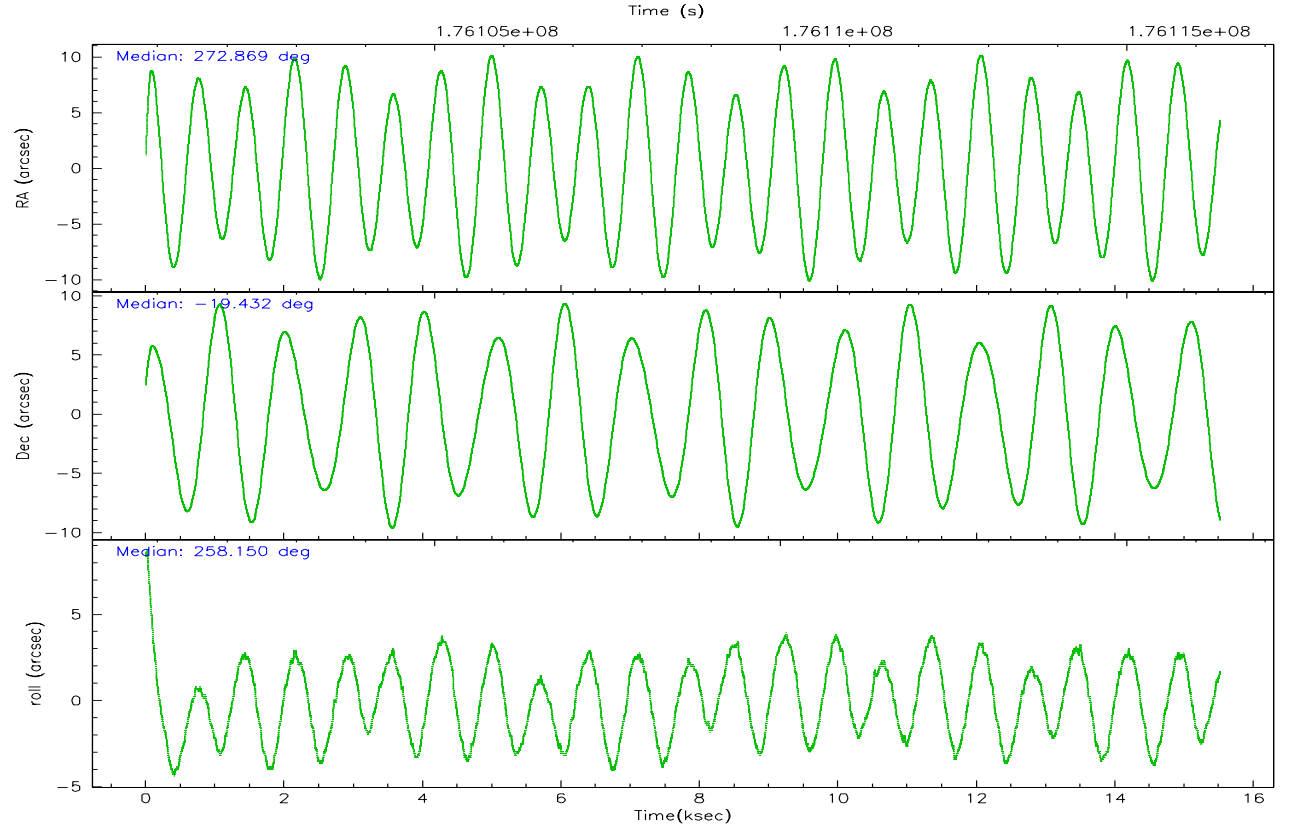
	ccd 2	ccd 3	ccd 4	ccd 5	ccd 6	ccd 7
grade 0 events	4362	4654	4274	7650	6880	20865
	5%	6%	5%	7%	9%	13%
grade 1 events	36	46	78	502	43	62
	0%	0%	0%	0%	0%	0%
grade 2 events	1689	1634	1868	18311	2053	33120
	2%	2%	2%	18%	2%	20%
grade 3 events	788	878	916	1801	942	11508
	1%	1%	1%	1%	1%	7%
grade 4 events	801	843	879	1651	921	11282
	1%	1%	1%	1%	1%	7%
grade 5 events	1884	2234	2412	4841	2331	6071
	2%	3%	2%	4%	3%	3%
grade 6 events	1324	1250	1201	28152	1538	44345
	1%	1%	1%	27%	2%	27%
grade 7 events	64684	61155	70946	37995	61735	32236
	85%	84%	85%	37%	80%	20%

2.2 Compared Parameters

Parameter	Planned	Actual	Parameter	Planned	Actual
Instrument	ACIS	ACIS	Obspar format version number	6	6
Detector	ACIS-234567	ACIS-234567	Obspar file type	PREDICTED	ACTUAL
Grating	NONE	NONE	Obspar update status	NONE	UPDATED
Data mode	VFAINT	VFAINT	On-chip summing requested	N	N
Observation mode	POINTING	POINTING	Subarray requested	NONE	NONE
Pointing RA	272.859306	272.8686769602542	Alternating exposures requested	N	N
Pointing Dec	-19.406820	-19.43255437364202	Primary exposure time	0.000000	3.2
Pointing Roll	257.995615	258.1553642979893			
SIM focus pos (mm)	-0.684267	-0.6828225247311905			
SIM defocus (mm)	0	0.001444936568705701			
SIM translation stage pos (mm)	-190.132523	-190.1400660498719			
SIM translation stage offset (mm)	0	0.00754346686406393			
Observation start time	176101532.184000	176100316.07922			
Observation start date	2003-08-01T05:04:28	2003-08-01T04:45:16			
Observation end time	176116357.184000	176116862.14243			
Observation end date	2003-08-01T09:11:33	2003-08-01T09:21:02			
Read mode	TIMED	TIMED			

2.3 Aspect



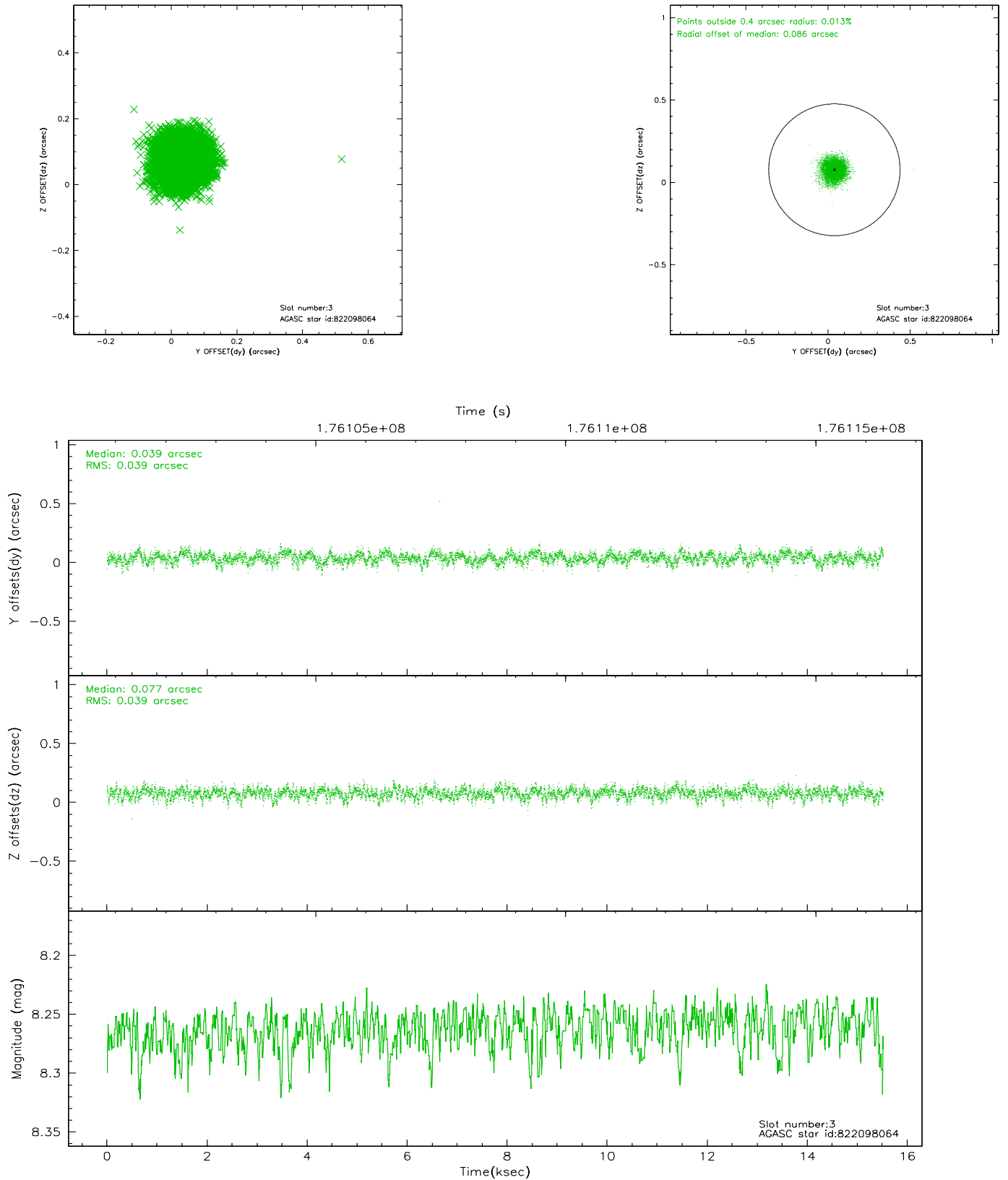


Slot Statistics

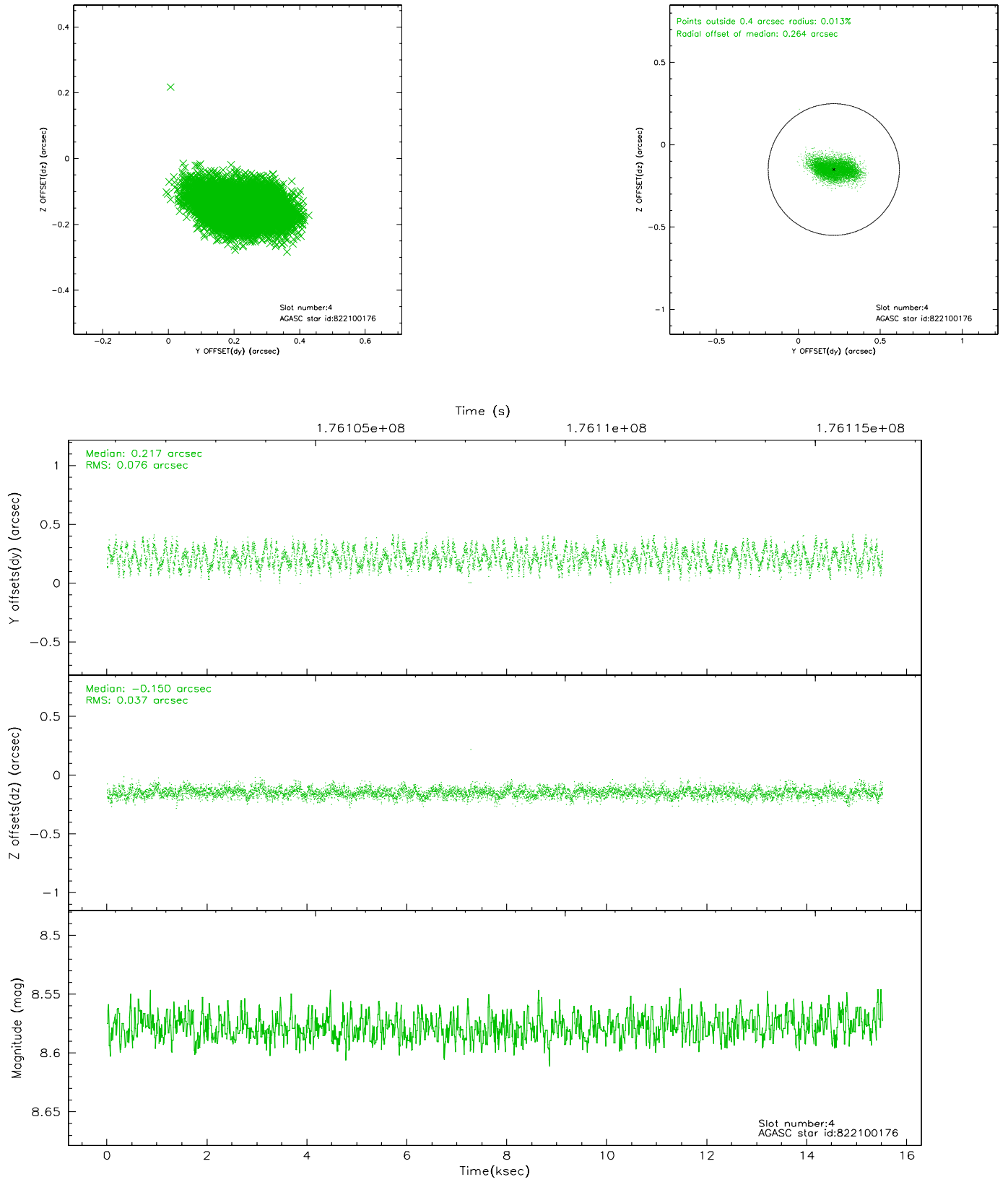
slot	status	id	mag	n_pts	med_dy	med_dz	dr1	dr2	ra	dec	mean_y	mean_z
0	FID	ACIS-S-2	7.10	3785	-0.024	-0.018	0.007	0.011	0.000000	0.000000	-758.64	-1729.66
1	FID	ACIS-S-4	7.21	3785	0.019	0.016	0.006	0.011	0.000000	0.000000	2154.58	178.52
2	FID	ACIS-S-5	7.23	3786	-0.027	0.011	0.007	0.011	0.000000	0.000000	-1811.09	172.57
3	GUIDE	822098064	8.26	7571	0.039	0.077	0.058	0.095	273.233974	-19.745214	929.05	1495.76
4	GUIDE	822100176	8.58	7571	0.217	-0.150	0.090	0.147	272.112888	-19.868886	2158.95	-2124.42
5	GUIDE	822103320	9.08	7571	0.091	0.120	0.078	0.126	273.198291	-20.140480	2346.74	1670.59
6	GUIDE	821572840	8.79	7567	-0.252	-0.054	0.069	0.113	272.287378	-18.702558	-2070.69	-2434.21
7	GUIDE	822086368	8.94	7570	-0.099	0.009	0.105	0.167	273.643156	-19.056339	-1783.42	2347.48

2.4 Star Slots

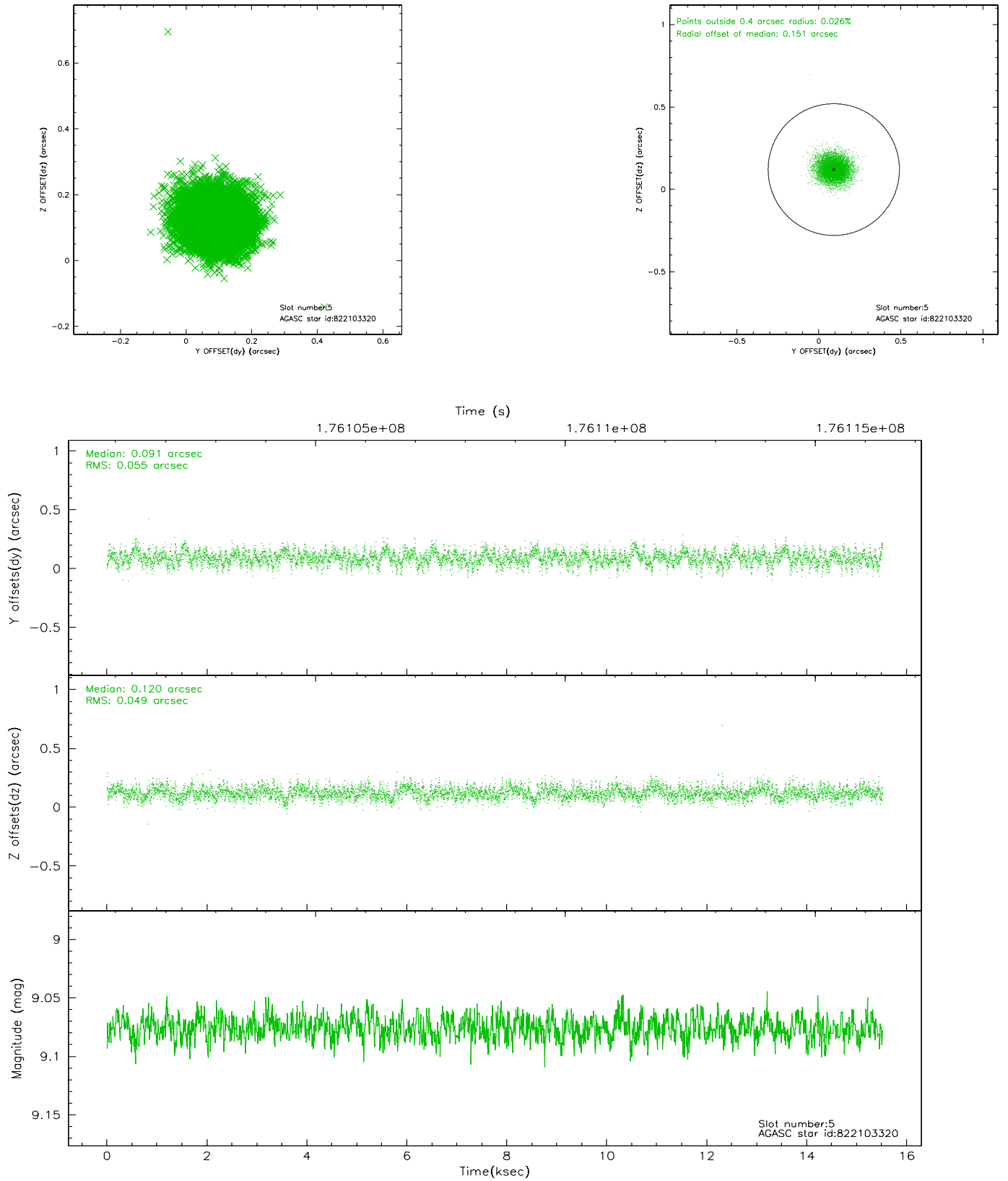
2.4.1 Slot 3



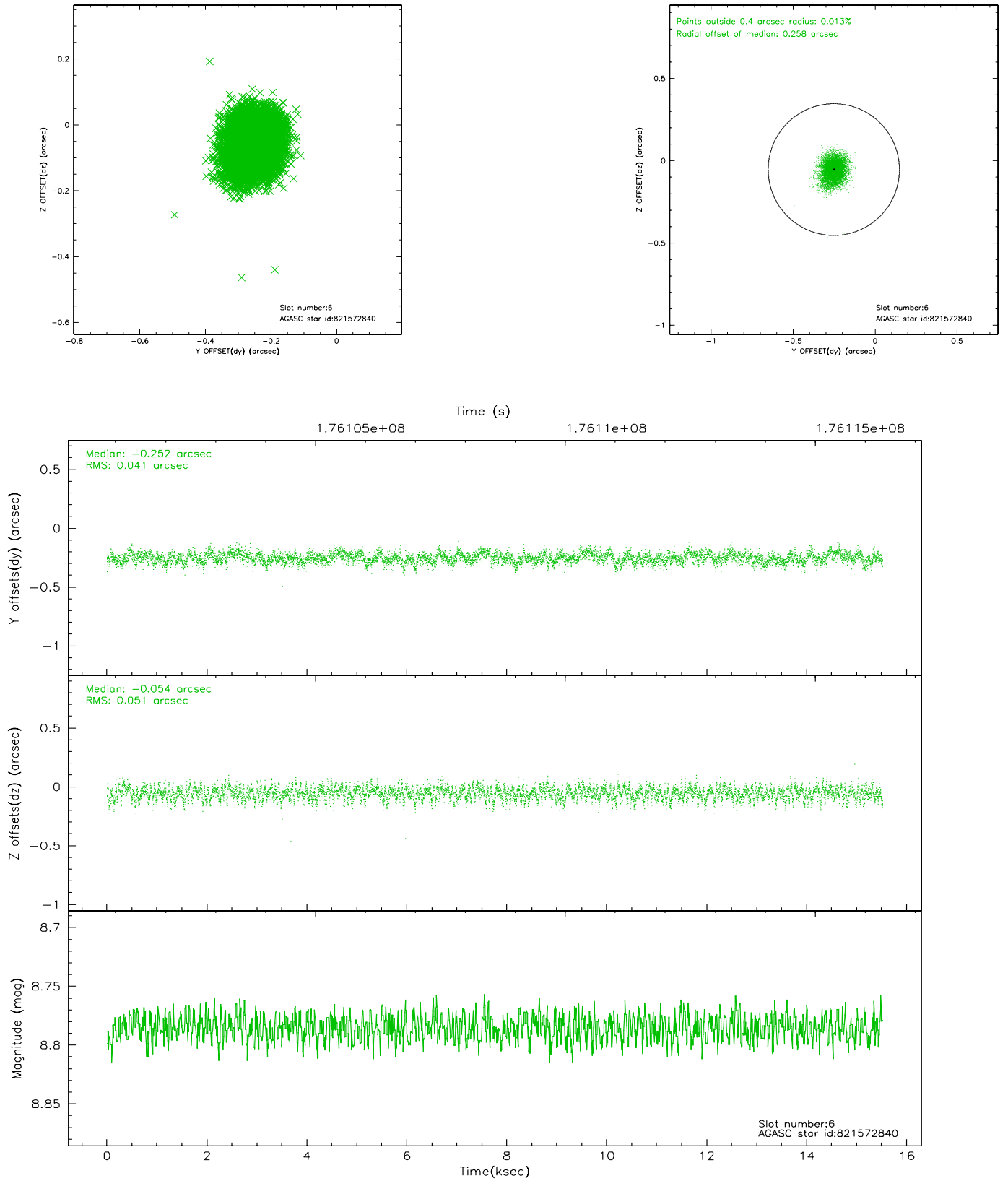
2.4.2 Slot 4



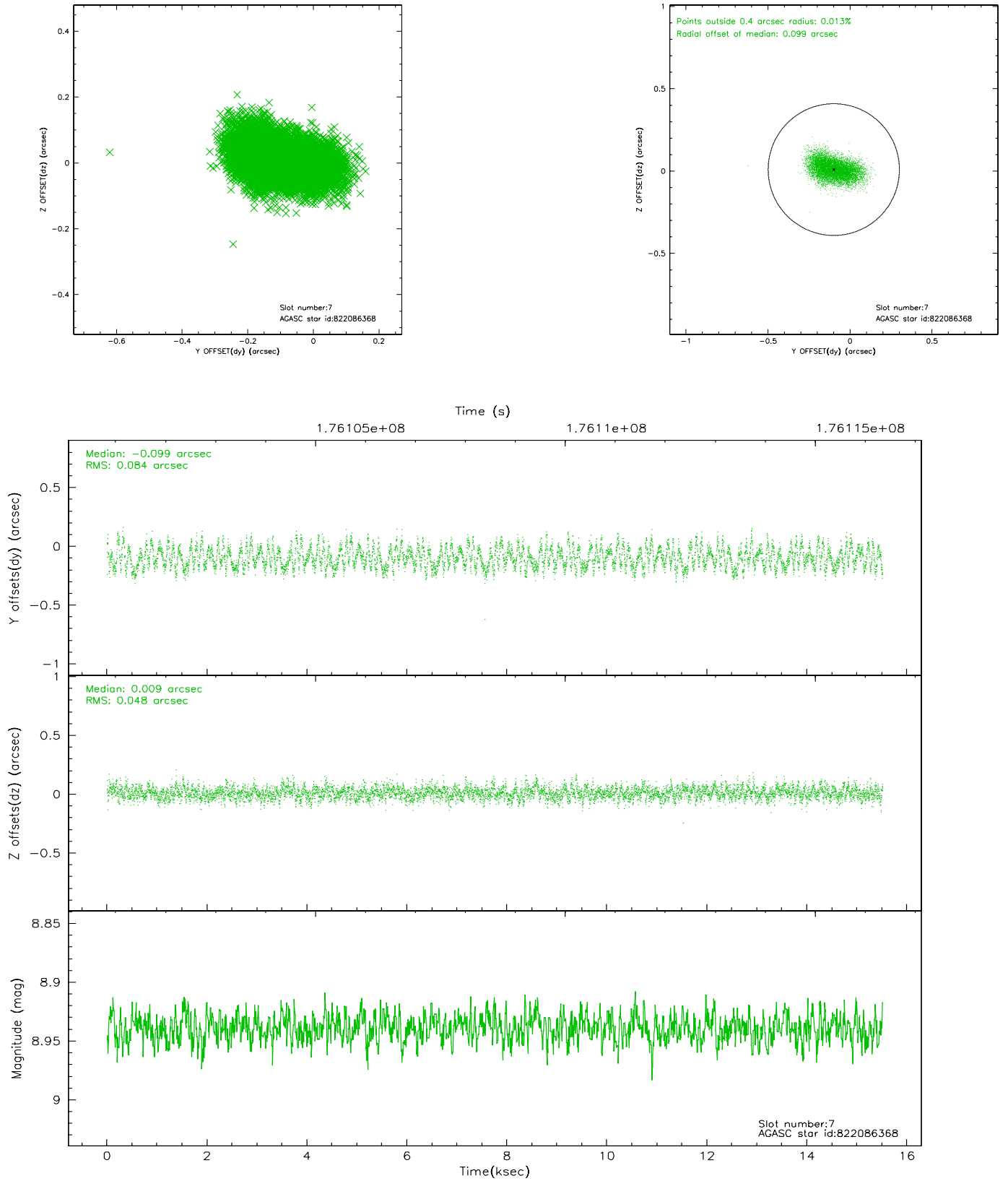
2.4.3 Slot 5



2.4.4 Slot 6

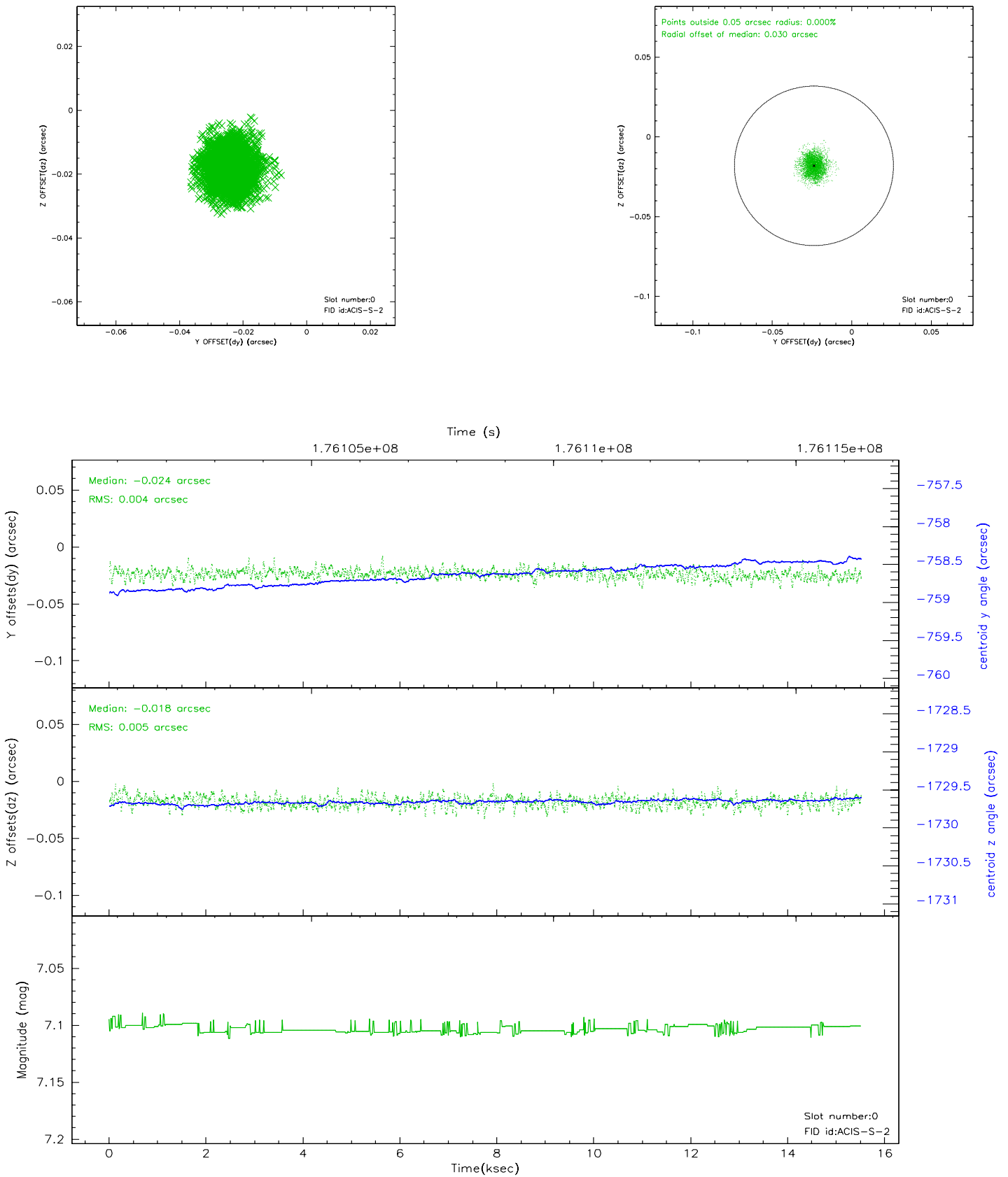


2.4.5 Slot 7

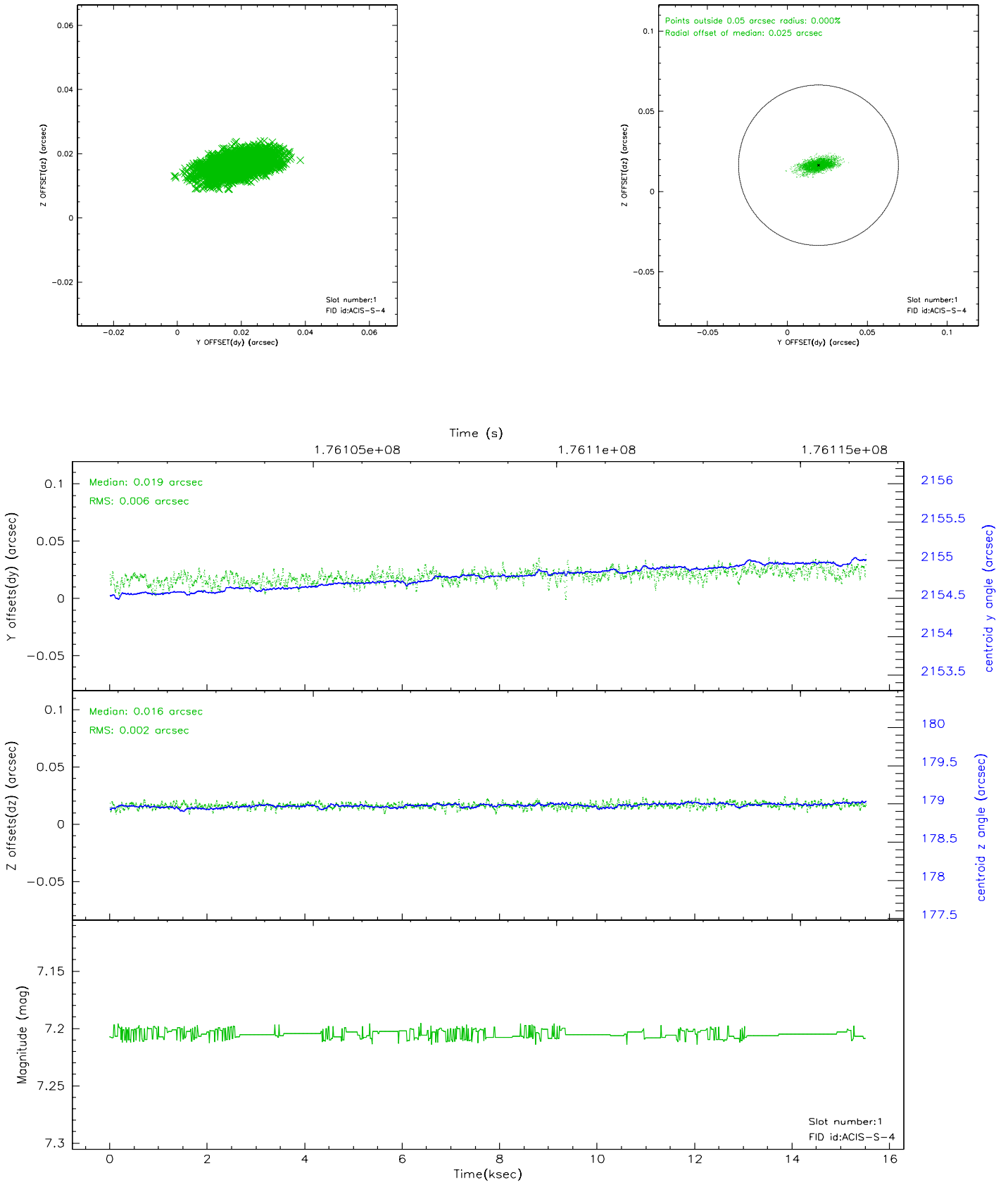


2.5 FID Slots

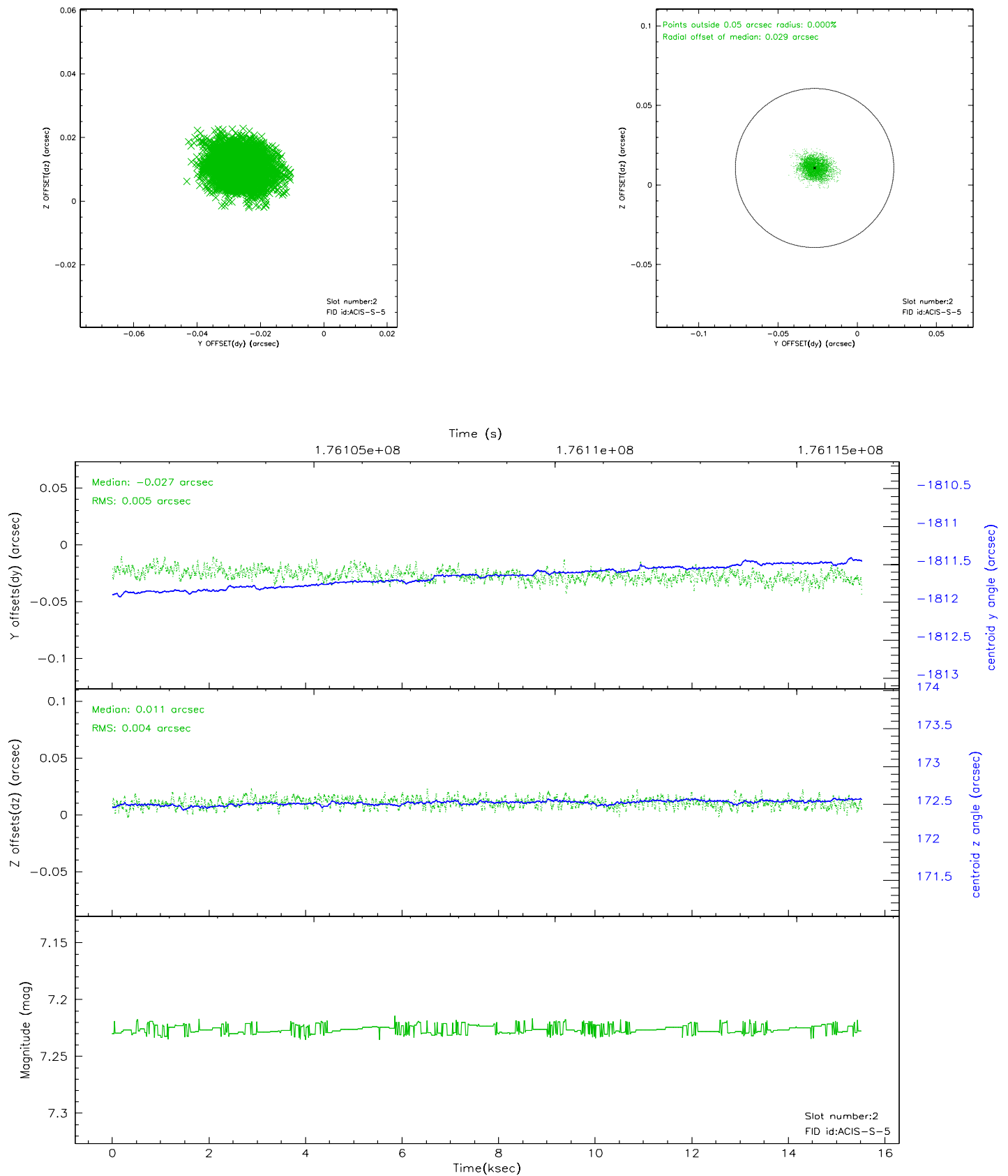
2.5.1 Slot 0



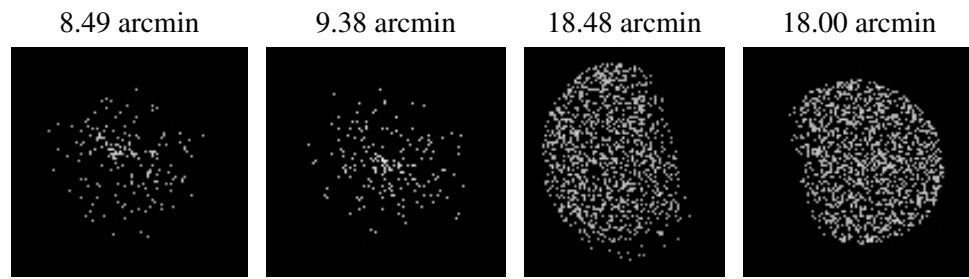
2.5.2 Slot 1



2.5.3 Slot 2



3 Point Sources



A Summary

A.1 Status

V&V Scientist	Beth Sundheim
V&V Date (YYYY-MM-DD)	2006.07.12
V&V Edition	1
V&V Disposition and Status	OK
V&V Charge Time	14.787

A.2 Comments