

# V&V Reference Report

## L2 ASCDS Version : 8.4.5

Observation 391 - L2 Version 3  
Chandra X-Ray Center

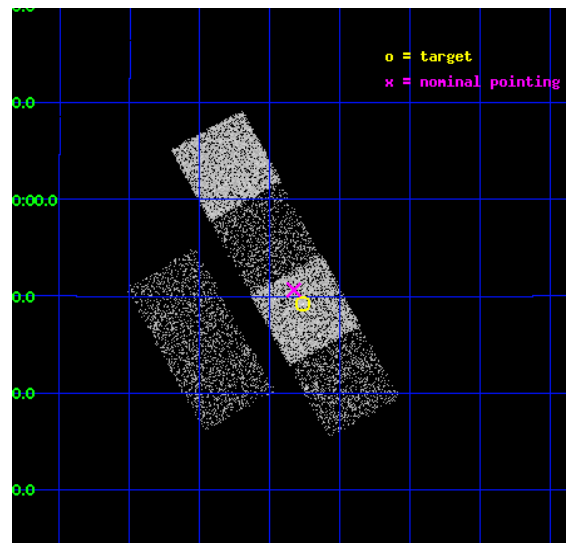
L2 Processing Date : Sep 3 2012

## Contents

<b>1</b>	<b>Front</b>	<b>2</b>
<b>2</b>	<b>OBI</b>	<b>3</b>
2.1	OBI . . . . .	3
2.1.1	Images . . . . .	3
2.1.2	Bias . . . . .	3
2.1.3	Parameters . . . . .	4
2.1.4	Events . . . . .	4
2.2	Compared Parameters . . . . .	5
2.3	Aspect . . . . .	6
2.4	Star Slots . . . . .	9
2.4.1	Slot 4 . . . . .	9
2.4.2	Slot 5 . . . . .	10
2.4.3	Slot 6 . . . . .	11
2.4.4	Slot 7 . . . . .	12
2.5	FID Slots . . . . .	13
2.5.1	Slot 0 . . . . .	13
2.5.2	Slot 1 . . . . .	14
2.5.3	Slot 2 . . . . .	15
<b>A</b>	<b>Summary</b>	<b>16</b>
A.1	Status . . . . .	16
A.2	Comments . . . . .	16

# 1 Front

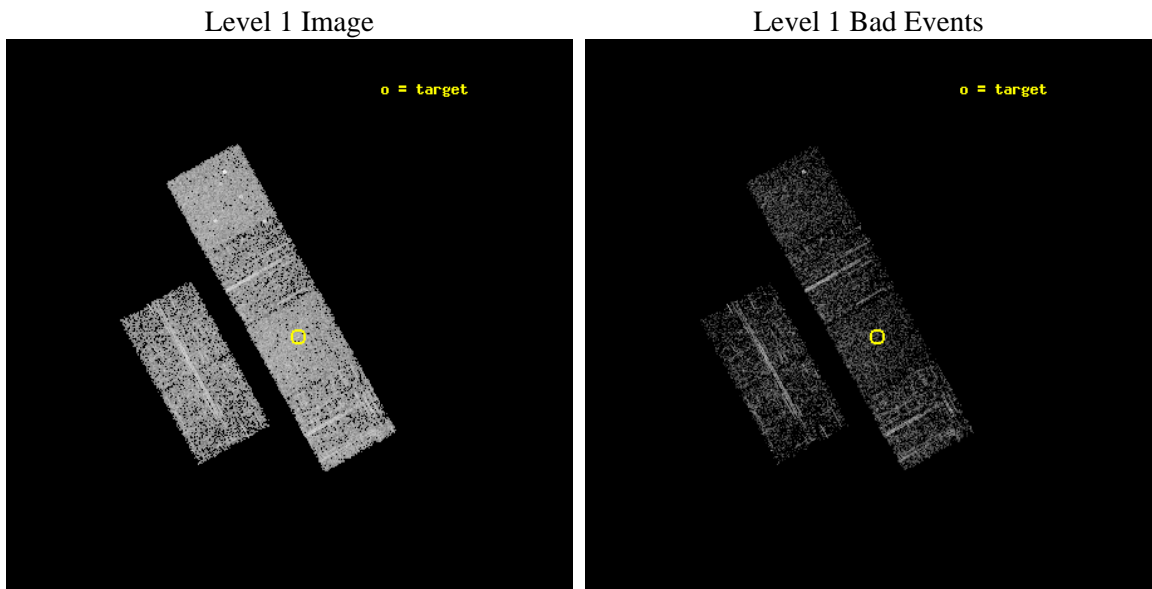
seq_num	700063	Sequence number
obs_id	391	Observation id
title	LOW-LUMINOSITY ACTIVE GALACTIC NUCLEI IN NEARBY GALAXIES	Proposal
observer	Professor Gordon Garmire	Principal investigator
object	NGC 3368	Source name
dtcycle	0	&#160
cycle	P	events from which exps? Prim/Second/Both
ra_targ	161.690833	Observer's specified target RA [deg]
dec_targ	11.819722	Observer's specified target Dec [deg]
ra_nom	161.70700098123	Nominal RA [deg]
dec_nom	11.844455901778	Nominal Dec [deg]
roll_nom	60.921384938086	Nominal Roll [deg]
revision	3	Processing version of data
ontime	2009.6000018567	Sum of GTIs [s]
livetime	1984.1532365973	Livetime [s]
ontime2	2009.6000018567	Sum of GTIs [s]
ontime3	2009.6000018567	Sum of GTIs [s]
ontime5	2009.6000018567	Sum of GTIs [s]
ontime6	2009.6000018567	Sum of GTIs [s]
ontime7	2009.6000018567	Sum of GTIs [s]
ontime8	2009.6000018567	Sum of GTIs [s]
l2events	18777	Number of level 2 events



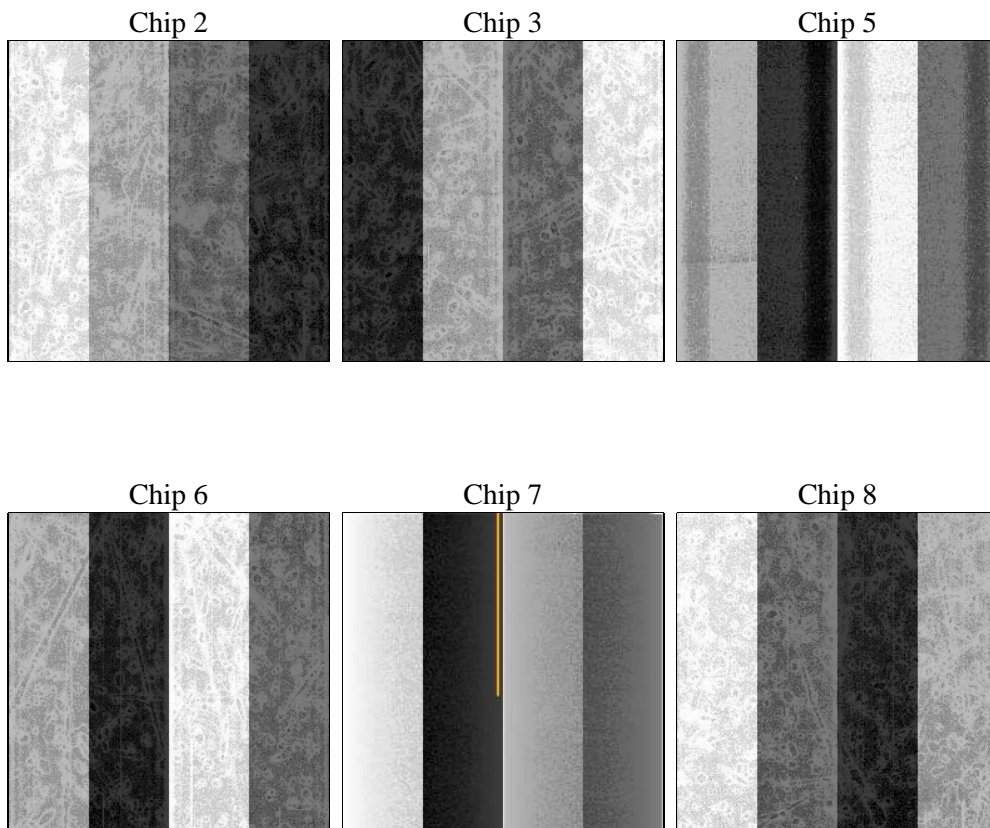
## 2 OBI

### 2.1 OBI

#### 2.1.1 Images



#### 2.1.2 Bias



### 2.1.3 Parameters

obi_num	1	Obi number	sched_exp_time	2000.000000	[s] Scheduled observation exposure time
ascdsver	8.4.5	Processing system revision	ontime	2009.6000018567	Sum of GTIs [s]
caldsver	4.5.1.1	&#160	ontime2	2009.6000018567	Sum of GTIs [s]
date	2012-09-03T17:50:38	Date and time of file creation	ontime3	2009.6000018567	Sum of GTIs [s]
revision	3	Processing version of data	ontime5	2009.6000018567	Sum of GTIs [s]
			ontime6	2009.6000018567	Sum of GTIs [s]
			ontime7	2009.6000018567	Sum of GTIs [s]
			ontime8	2009.6000018567	Sum of GTIs [s]
			l1events	86063	Number of level 1 events

### 2.1.4 Events

	ccd 2	ccd 3	ccd 5	ccd 6	ccd 7	ccd 8
level 1 events	12349	11598	17560	12455	15717	16384
rejected events	10866	10254	9398	11044	8964	13291
rejected %	87%	88%	53%	88%	57%	81%

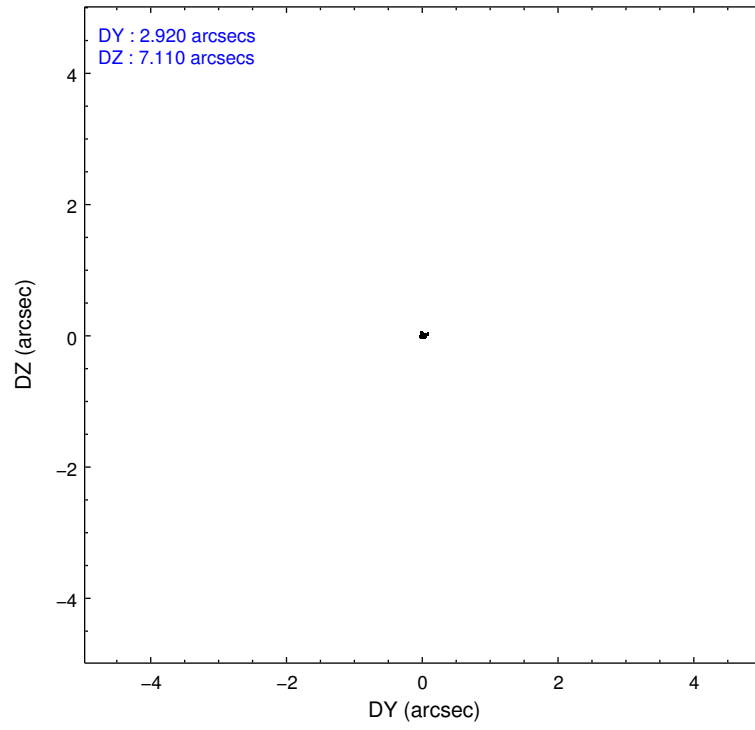
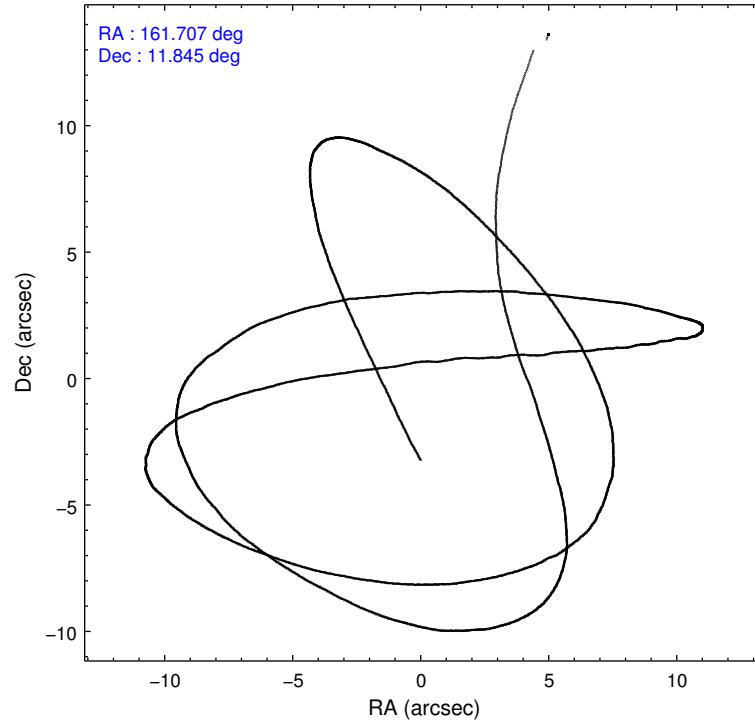
	ccd 2	ccd 3	ccd 5	ccd 6	ccd 7	ccd 8
grade 0 events	637	611	1223	582	691	899
	5%	5%	6%	4%	4%	5%
grade 1 events	2	3	193	3	13	12
	0%	0%	1%	0%	0%	0%
grade 2 events	313	242	2312	255	1324	720
	2%	2%	13%	2%	8%	4%
grade 3 events	129	128	330	145	630	288
	1%	1%	1%	1%	4%	1%
grade 4 events	143	138	365	145	652	245
	1%	1%	2%	1%	4%	1%
grade 5 events	432	439	1285	498	1479	631
	3%	3%	7%	3%	9%	3%
grade 6 events	267	226	3957	290	3483	951
	2%	1%	22%	2%	22%	5%
grade 7 events	10426	9811	7895	10537	7445	12638
	84%	84%	44%	84%	47%	77%

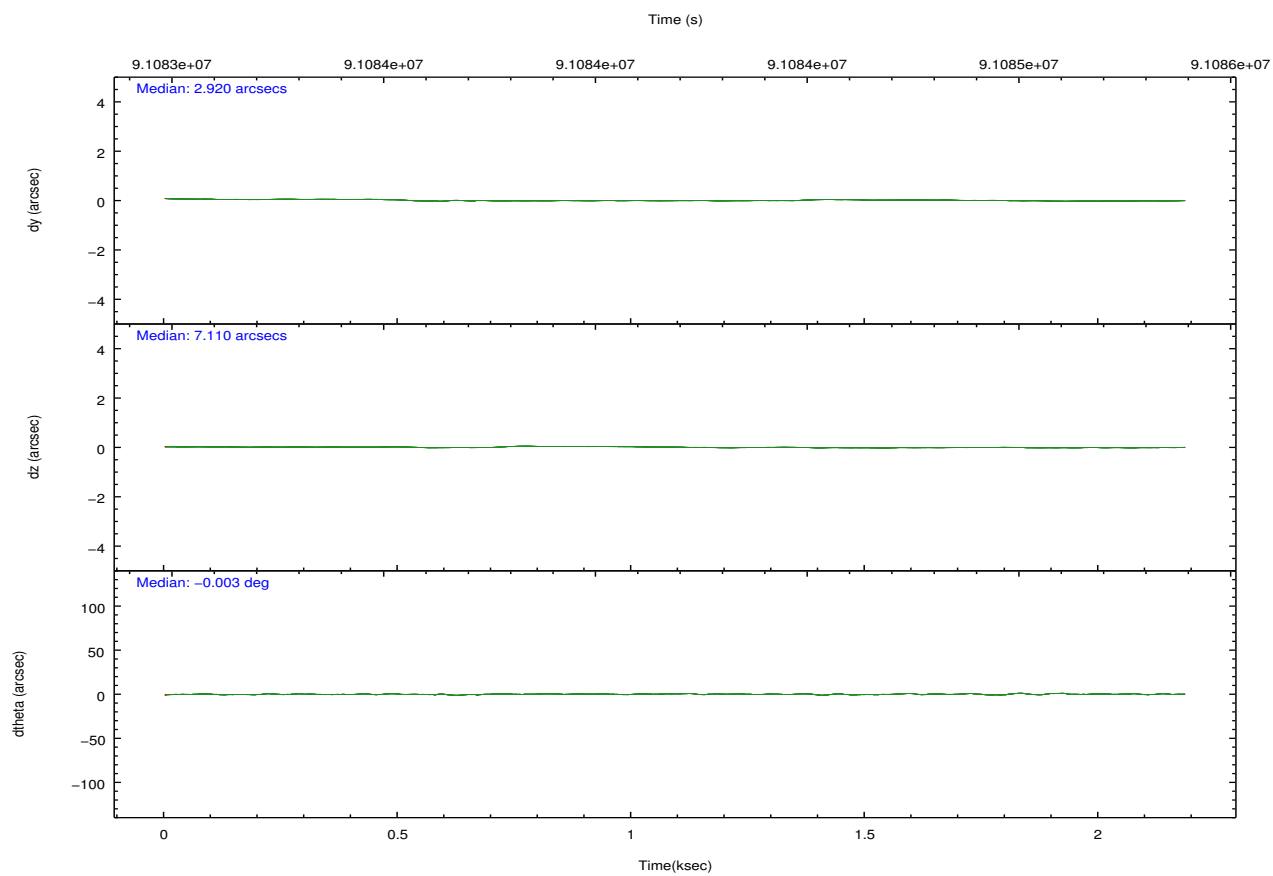
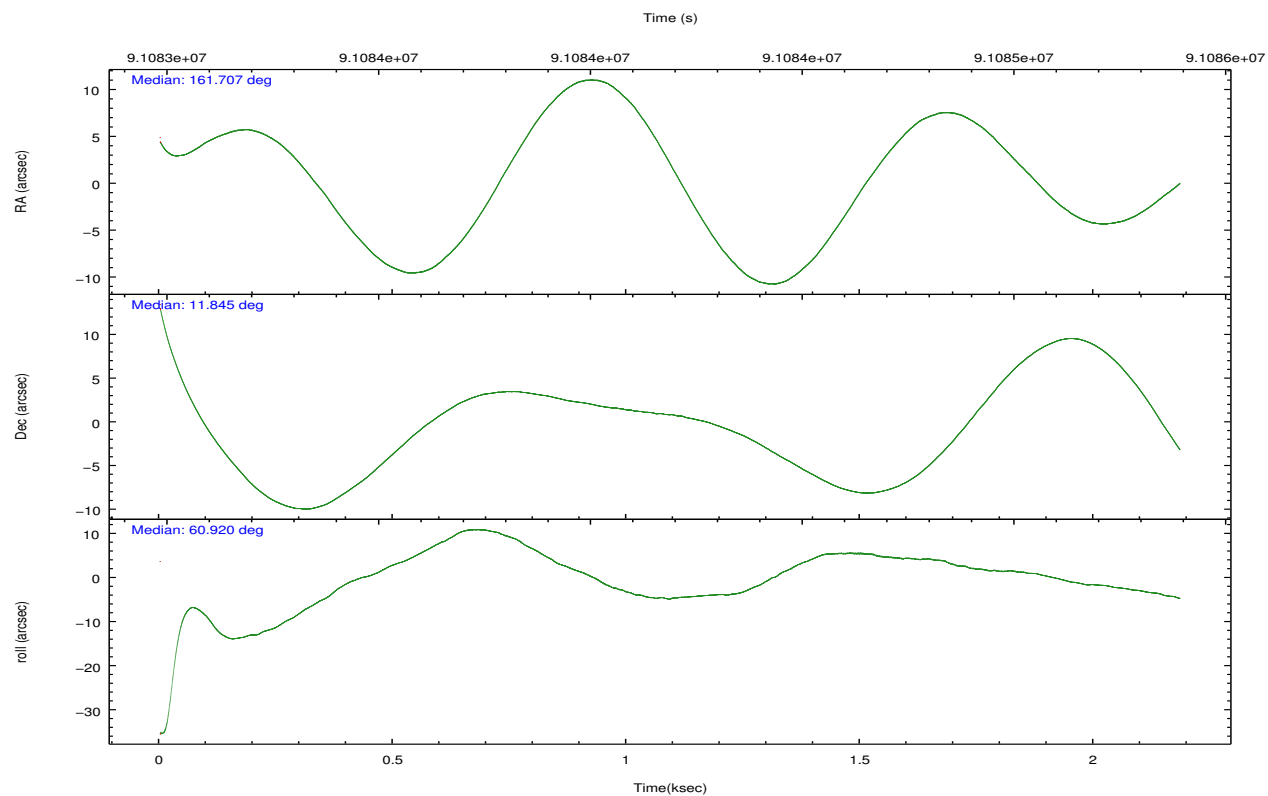
## 2.2 Compared Parameters

Parameter	Planned	Actual
Instrument	ACIS	ACIS
Detector	ACIS-235678	ACIS-235678
Grating	NONE	NONE
Data mode	FAINT	FAINT
Observation mode	POINTING	POINTING
[deg] Pointing RA	161.707634	161.7070009812329
[deg] Pointing Dec	11.817020	11.84445590177797
[deg] Pointing Roll	60.764814	60.92138493808569
[mm] SIM focus pos	-0.684267	-0.6828225247311905
[mm] SIM defocus	0	0.001444936568705701
[mm] SIM translation stage pos	-190.132523	-190.1400660498719
[mm] SIM translation stage offset	0	0.00754346686406393
[s] Observation start time (MET)	91083228.184000	91082122.23818199
Observation start date	2000-11-20T04:52:44	2000-11-20T04:35:22
[s] Observation end time (MET)	91085228.184000	91085988.53832901
Observation end date	2000-11-20T05:26:04	2000-11-20T05:39:48
Read mode	TIMED	TIMED

Parameter	Planned	Actual
Obspar format version number	7	7
Obspar file type	PREDICTED	ACTUAL
Obspar update status	NONE	UPDATED
Number of optional ACIS chips dropped	0	0
On-chip summing requested	N	N
Subarray requested	NONE	NONE
Alternating exposures requested	N	N
[s] Primary exposure time	0.000000	3.2

## 2.3 Aspect



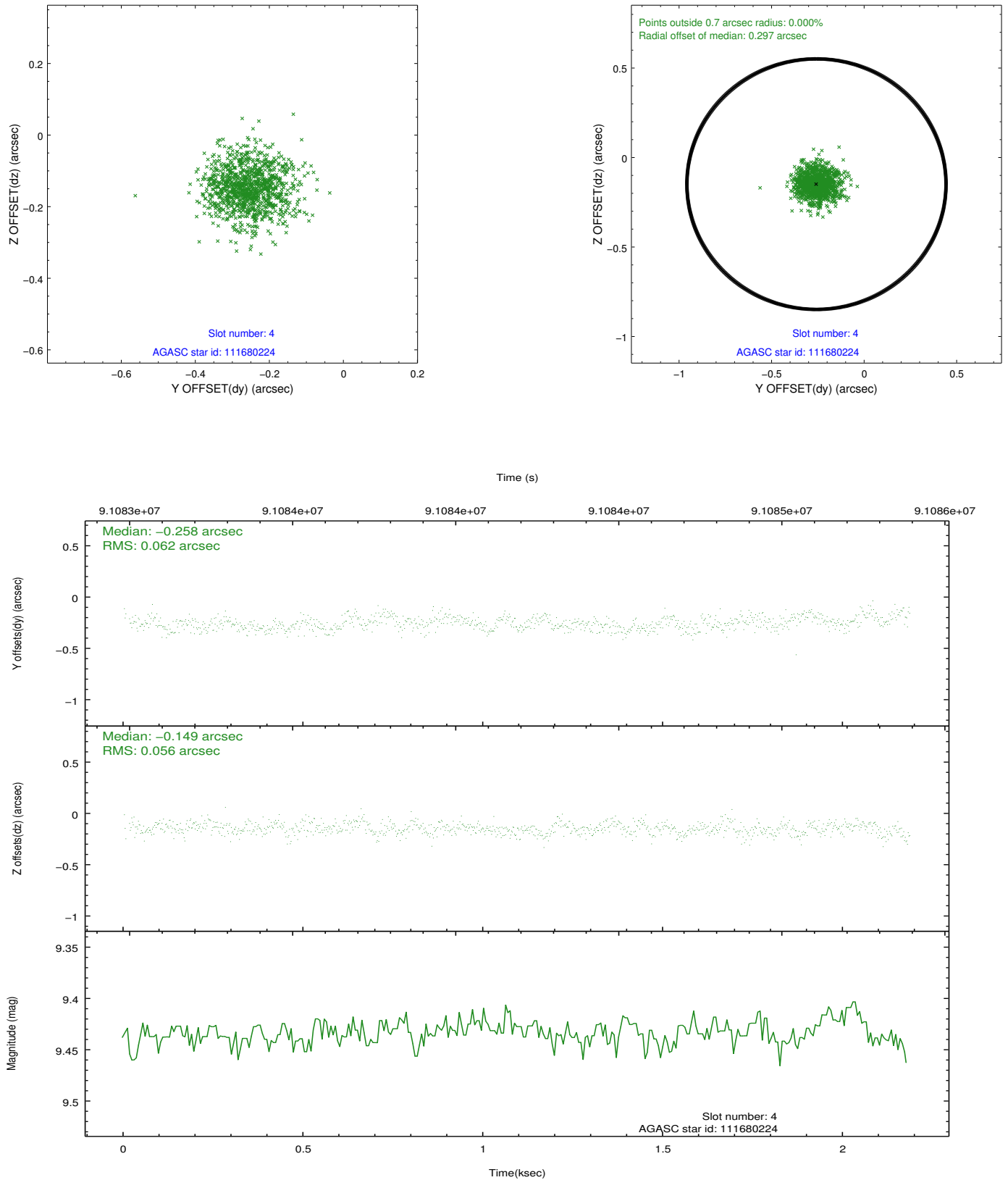


### Slot Statistics

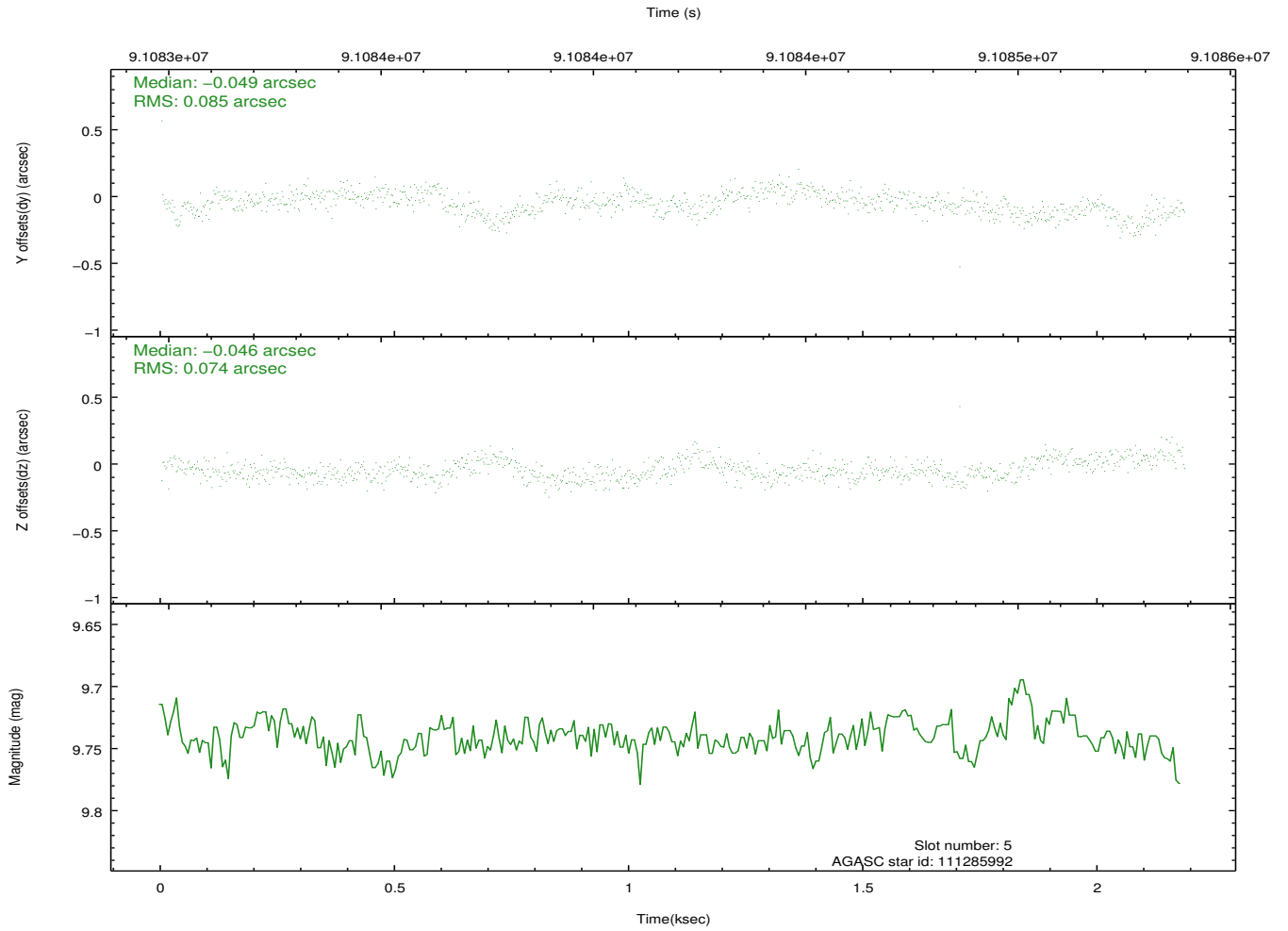
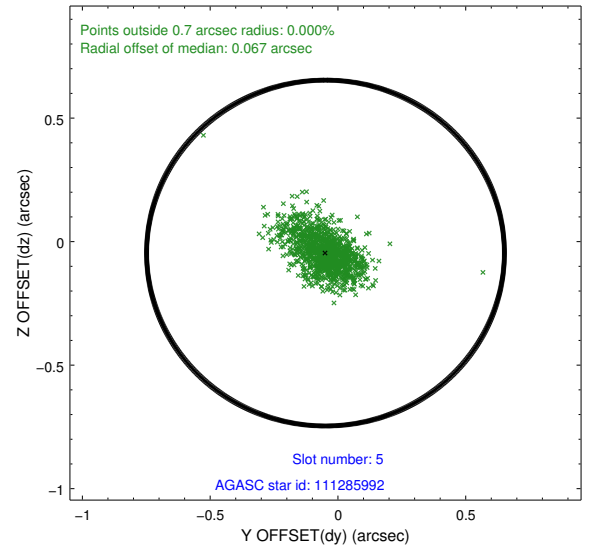
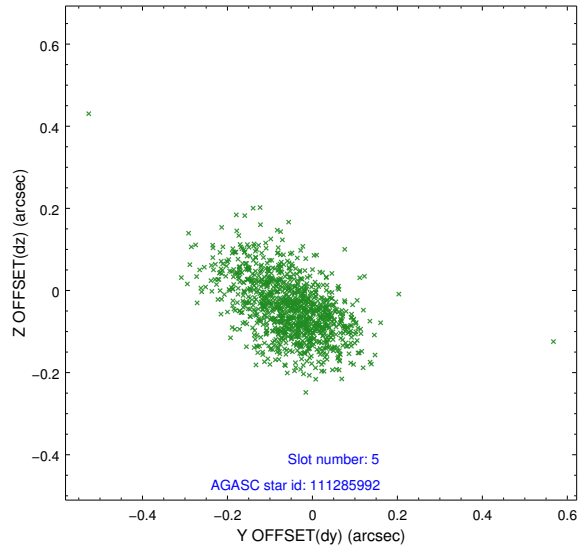
slot	status	id	mag	n_pts	med_dy	med_dz	dr1	dr2	ra	dec	mean_y	mean_z
0	FID	ACIS-S-2	7.12	533	-0.000	0.013	0.007	0.013	0.000000	0.000000	-755.59	-1728.26
1	FID	ACIS-S-4	7.20	532	-0.049	-0.003	0.007	0.011	0.000000	0.000000	2156.31	177.09
2	FID	ACIS-S-5	7.24	533	0.018	-0.001	0.006	0.011	0.000000	0.000000	-1804.55	174.21
3	UNUSED		0.00	0	0.000	0.000	0.000	0.000	0.000000	0.000000	0.00	0.00
4	GUIDE	111680224	9.43	1061	-0.258	-0.149	0.089	0.141	161.634669	12.601106	2337.56	1602.54
5	GUIDE	111285992	9.74	1066	-0.049	-0.046	0.114	0.193	162.048017	11.891969	823.66	-912.50
6	GUIDE	111286408	9.15	1066	0.302	-0.026	0.070	0.113	161.652685	11.184124	-2082.23	-944.20
7	GUIDE	111286848	9.56	1065	0.008	0.220	0.097	0.163	162.100662	11.107254	-1552.93	-2459.57

## 2.4 Star Slots

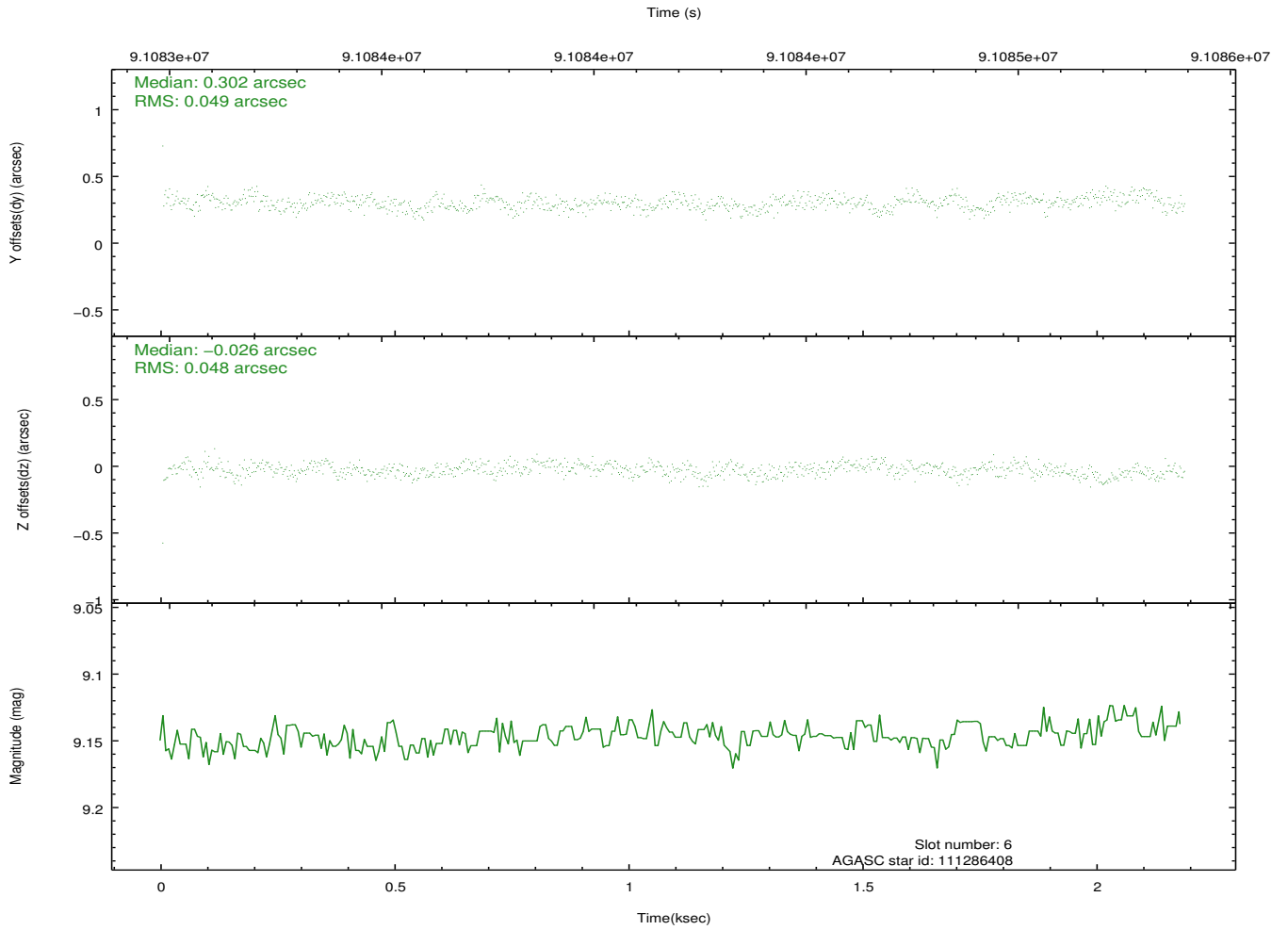
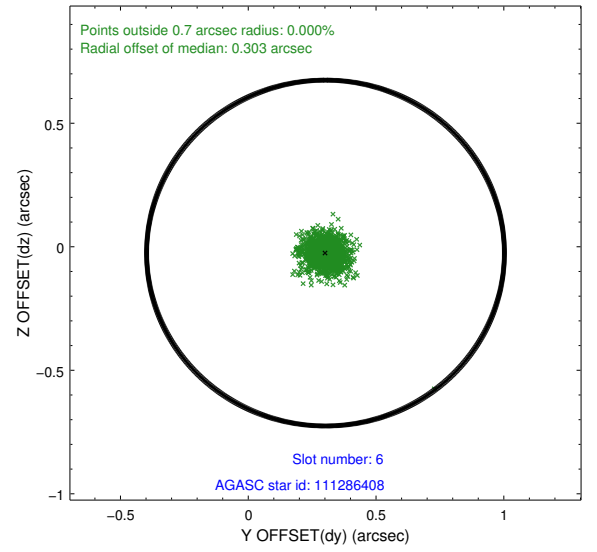
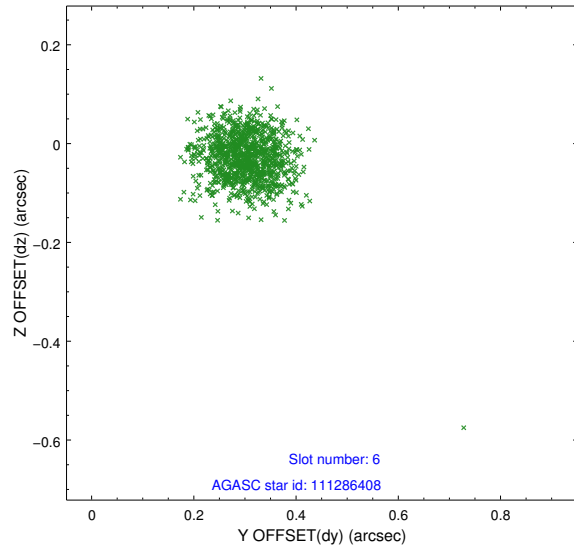
### 2.4.1 Slot 4



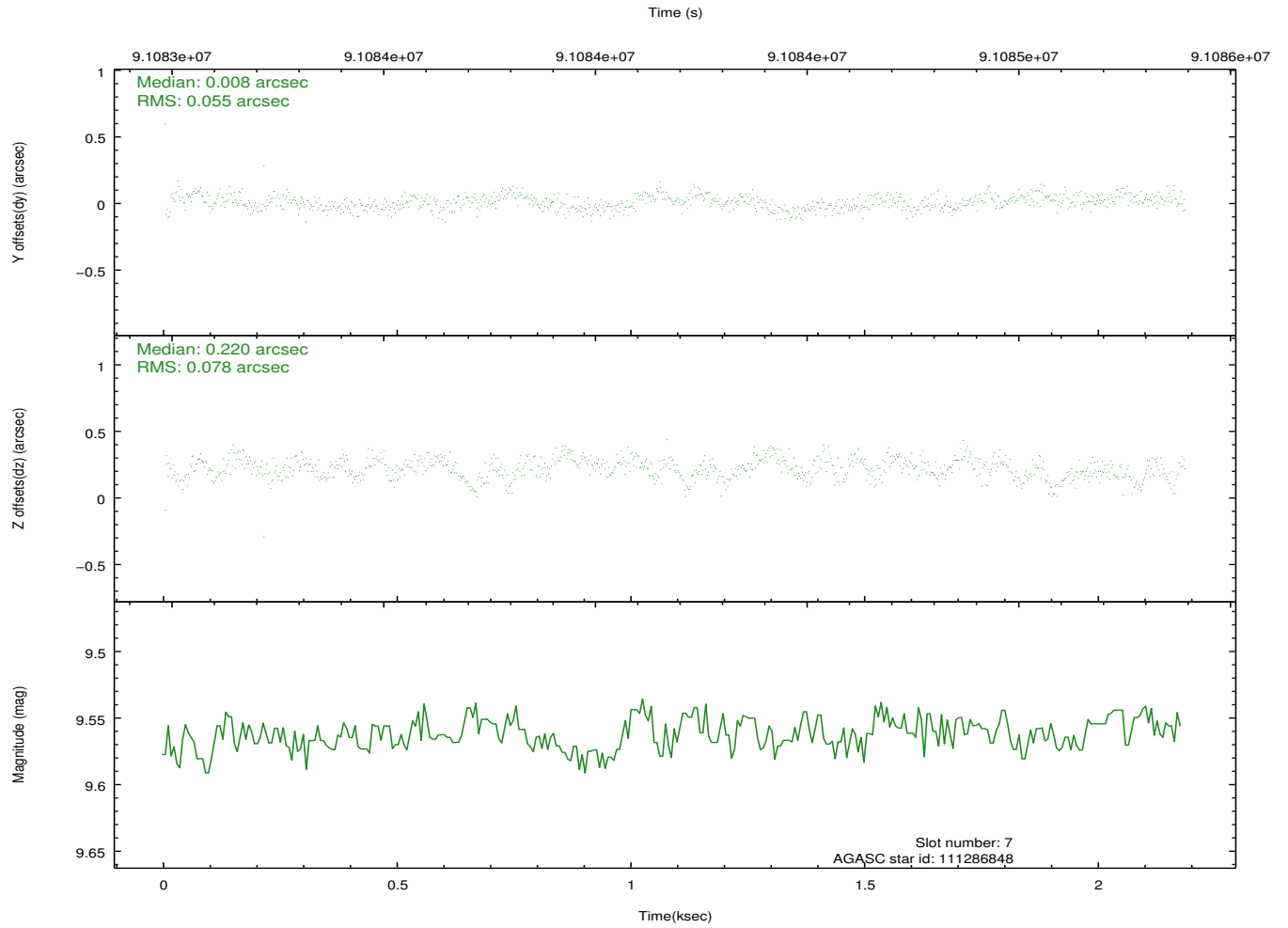
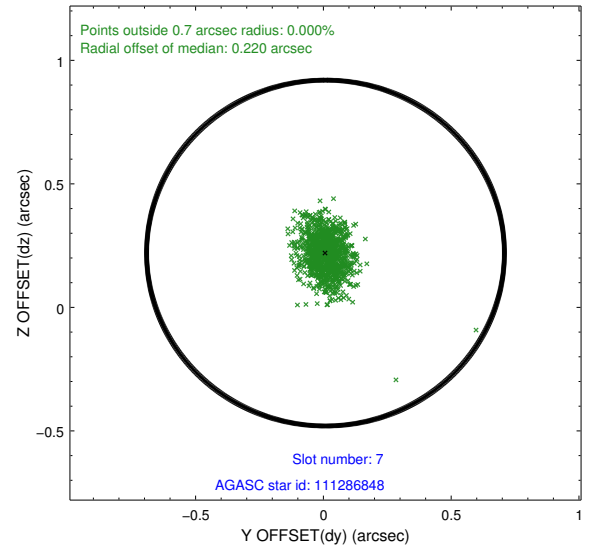
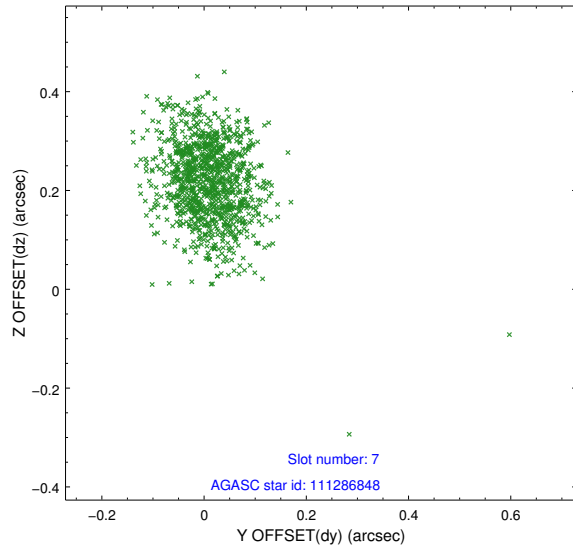
## 2.4.2 Slot 5



### 2.4.3 Slot 6

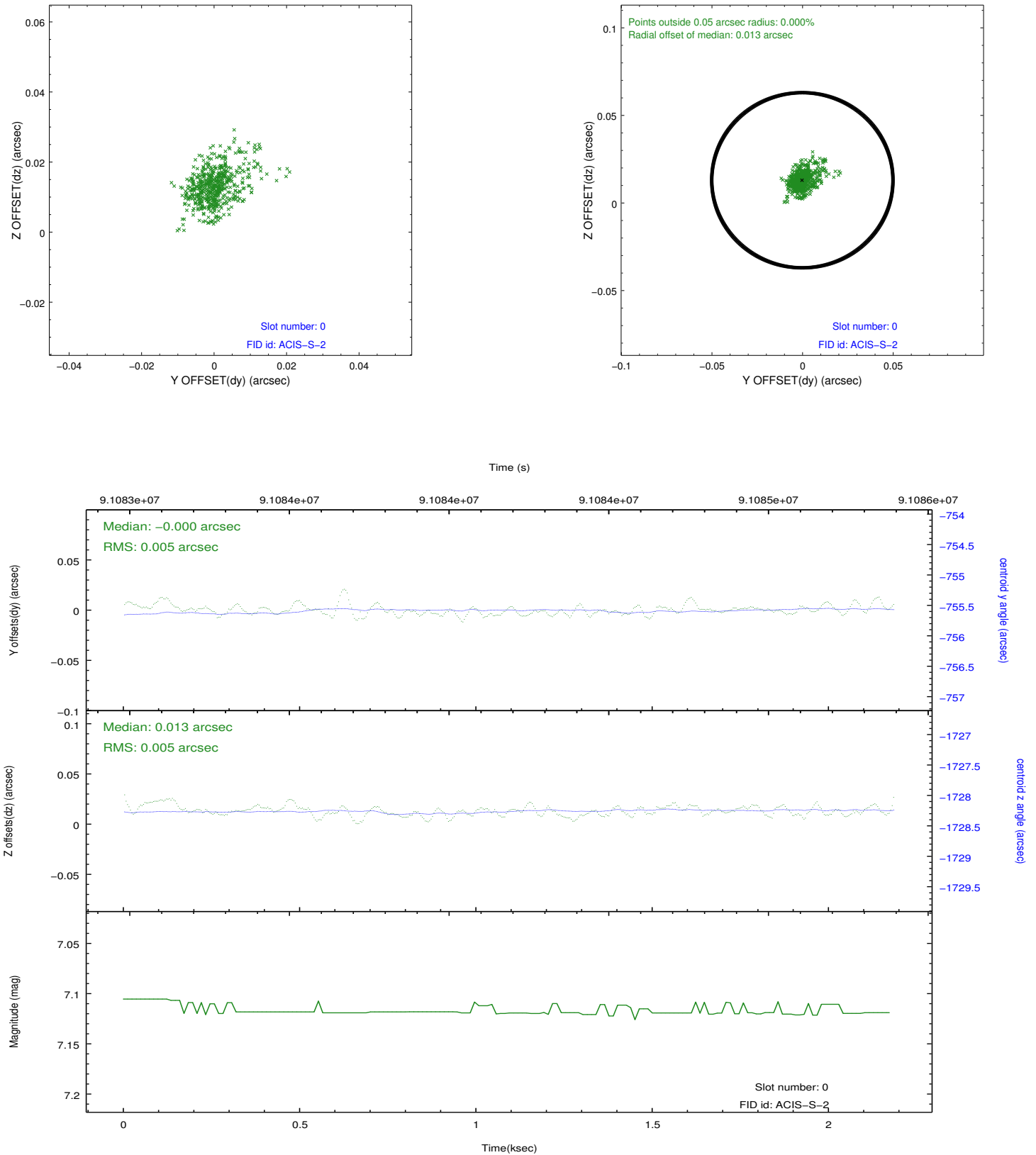


## 2.4.4 Slot 7

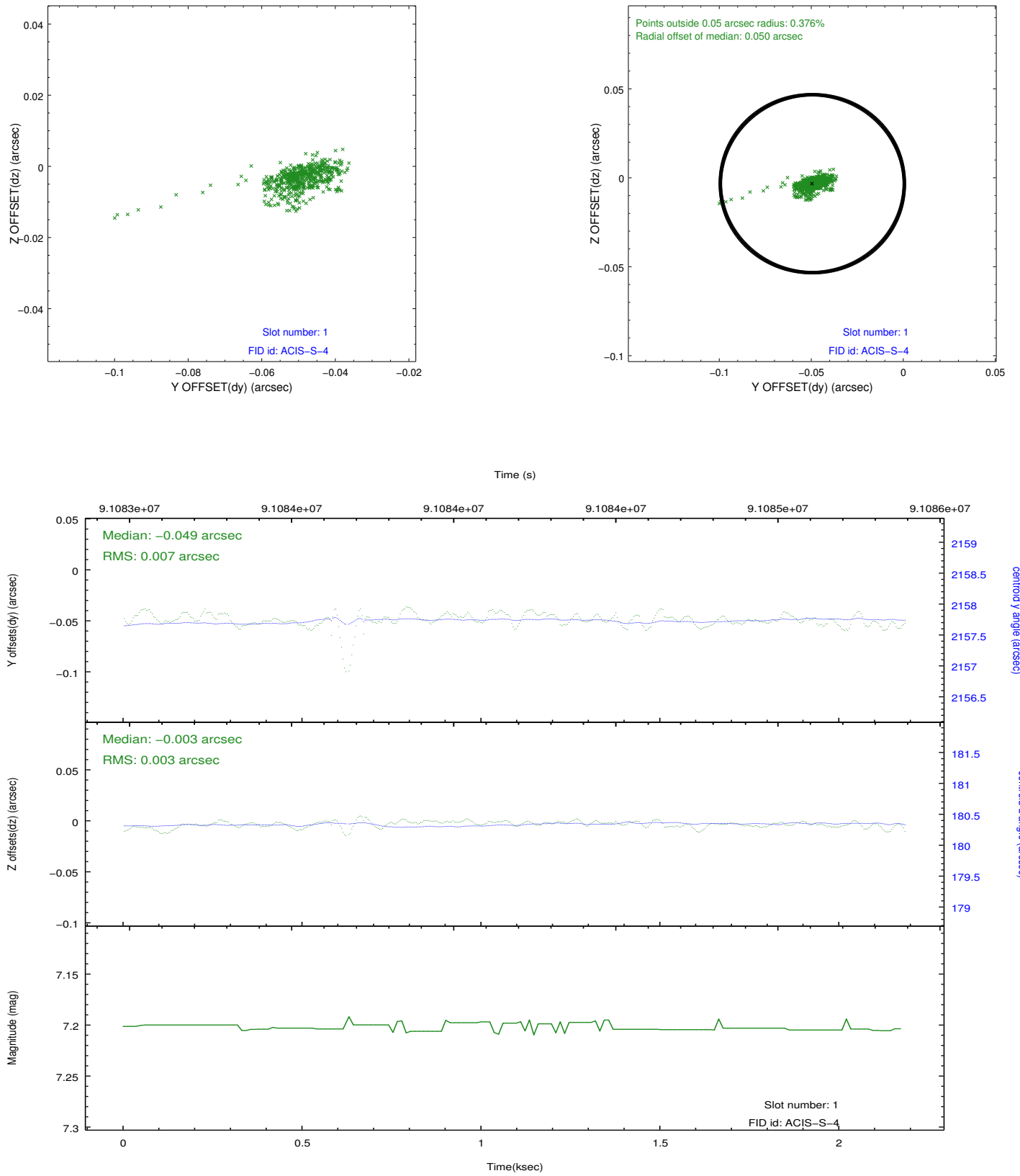


## 2.5 FID Slots

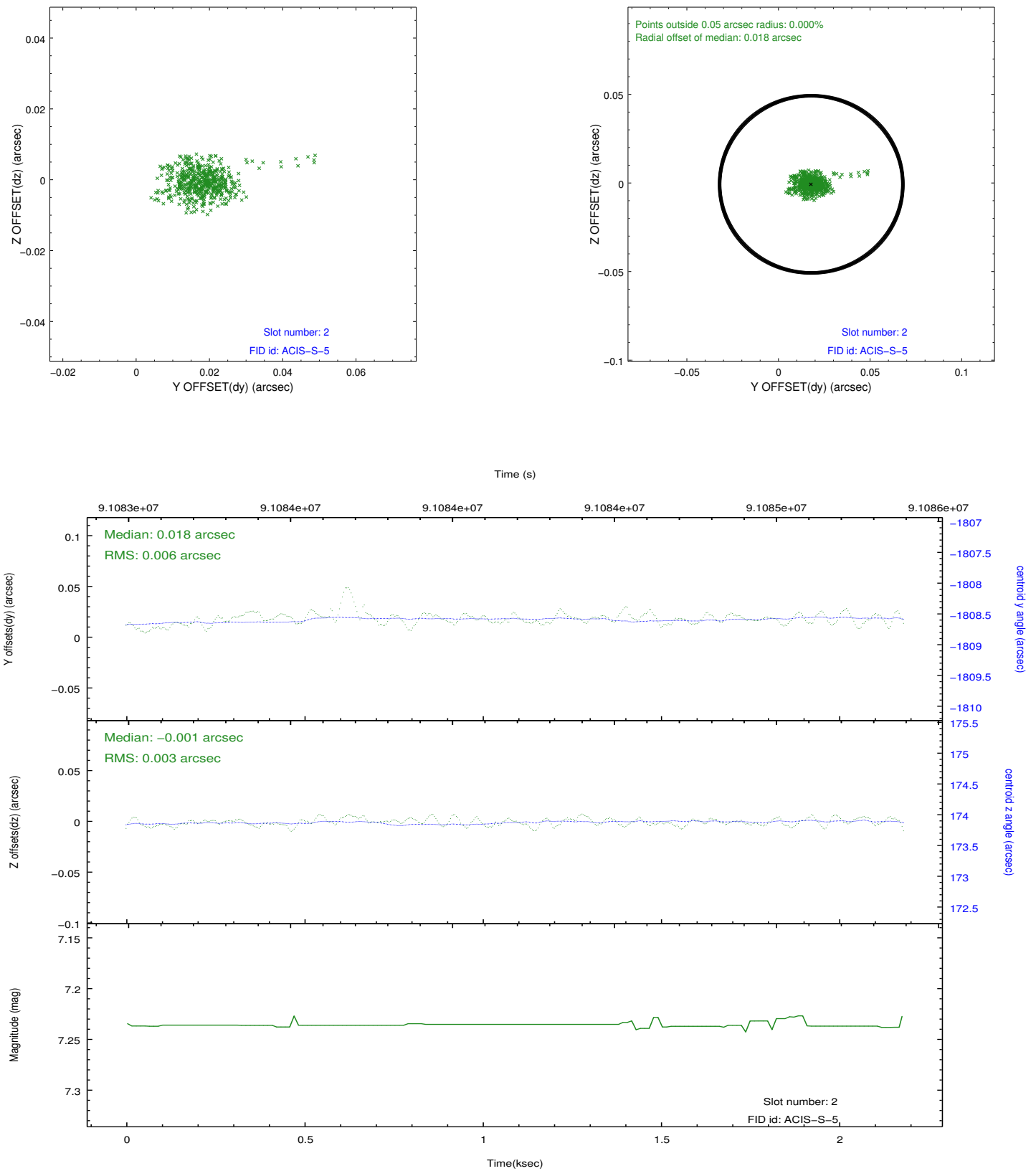
### 2.5.1 Slot 0



## 2.5.2 Slot 1



### 2.5.3 Slot 2



## A Summary

### A.1 Status

V&V Scientist	Jen Lauer
V&V Date (YYYY-MM-DD)	2012.09.11
V&V Edition	1
V&V Disposition and Status	OK
V&V Charge Time	2.012

### A.2 Comments

Slot 3 was not used in this observation.