

V&V Reference Report

L2 ASCDS Version : 7.6.10

Observation 391 - L2 Version 001
Chandra X-Ray Center

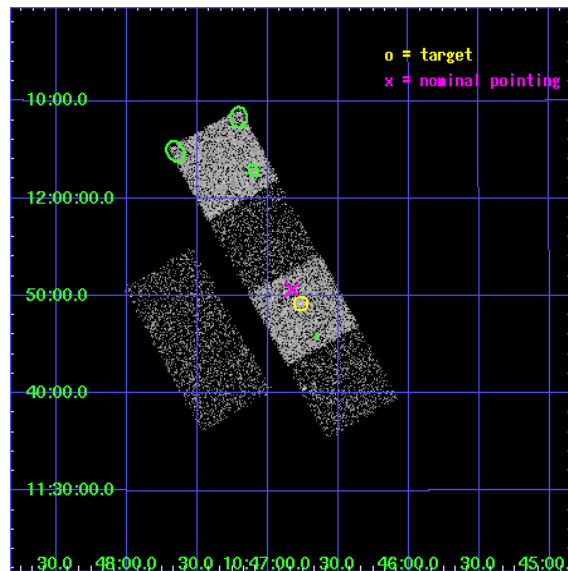
L2 Processing Date : Jun 16 2007

Contents

1	Front	2
2	OBI	3
2.1	OBI	3
2.1.1	Images	3
2.1.2	Bias	3
2.1.3	Parameters	4
2.1.4	Events	4
2.2	Compared Parameters	5
2.3	Aspect	6
2.4	Star Slots	9
2.4.1	Slot 4	9
2.4.2	Slot 5	10
2.4.3	Slot 6	11
2.4.4	Slot 7	12
2.5	FID Slots	13
2.5.1	Slot 0	13
2.5.2	Slot 1	14
2.5.3	Slot 2	15
3	Point Sources	16
A	Summary	17
A.1	Status	17
A.2	Comments	17

1 Front

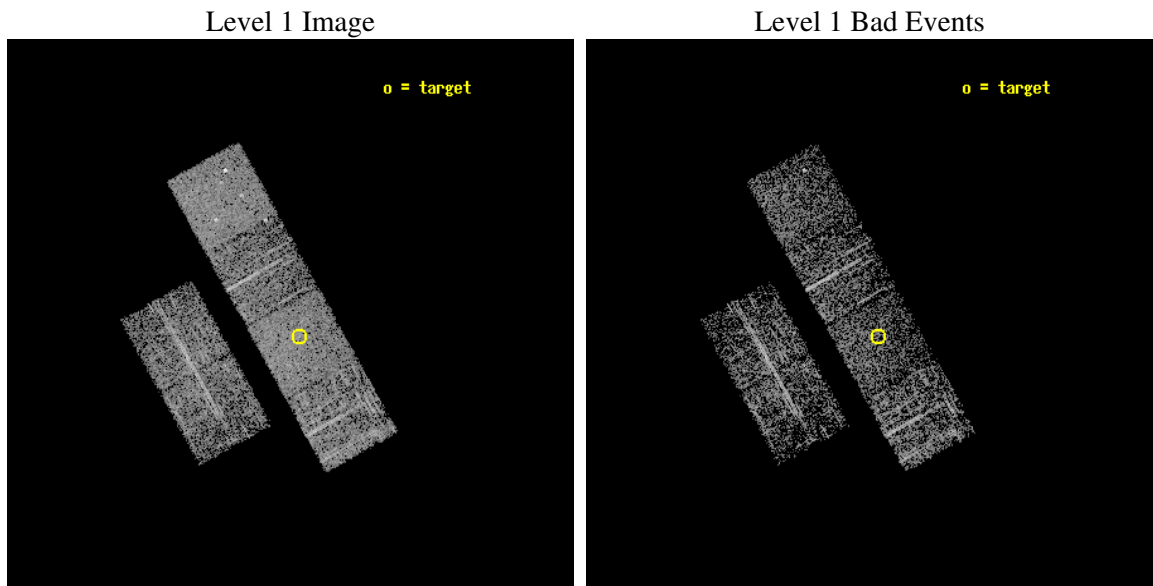
seq_num	700063
obs_id	391
title	LOW-LUMINOSITY ACTIVE GALACTIC NUCLEI IN NEARBY GALAXIES
observer	Prof. Gordon Garmire
object	NGC 3368
dtcycle	0
cycle	P
ra_targ	161.690833
dec_targ	11.819722
ra_nom	161.70700098123
dec_nom	11.844455901778
roll_nom	60.921384938086
revision	2
ontime	2009.6000018716
livetime	1984.153236612
ontime2	2009.6000018716
ontime3	2009.6000018716
ontime5	2009.6000018716
ontime6	2009.6000018716
ontime7	2009.6000018716
ontime8	2009.6000018716
l2events	18794



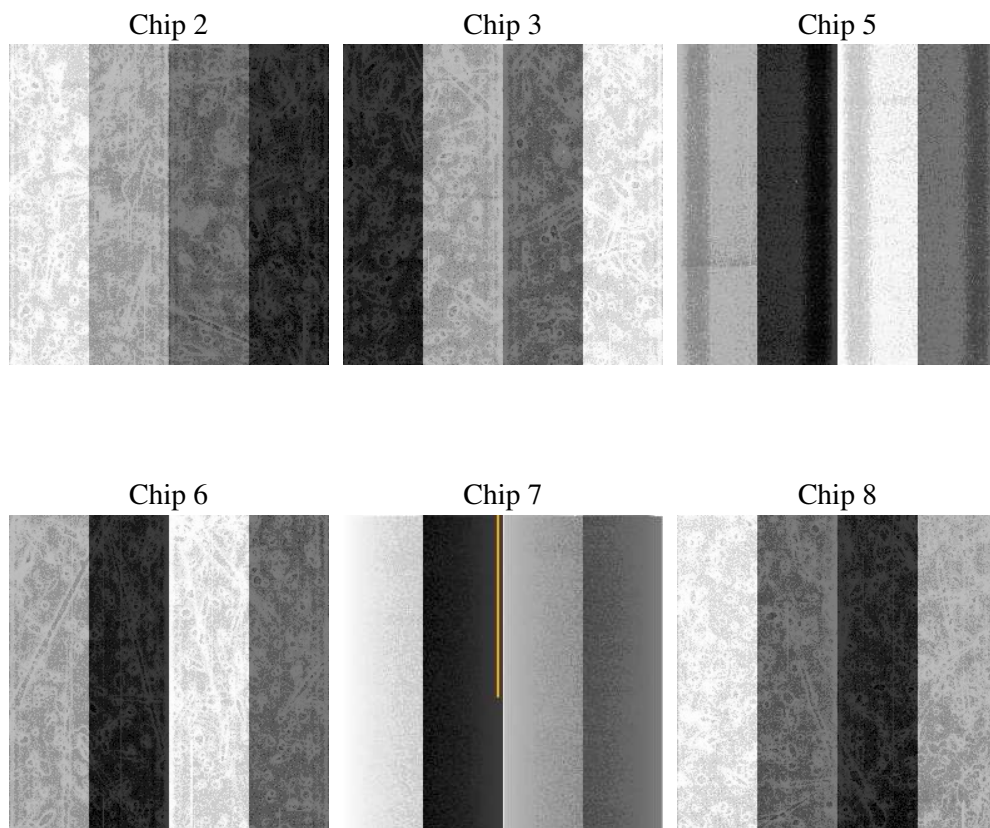
2 OBI

2.1 OBI

2.1.1 Images



2.1.2 Bias



2.1.3 Parameters

obi_num	1
ascdsver	7.6.10
caldsver	3.4.0
date	2007-06-16T19:55:29
revision	2

sched_exp_time	2000.000000
ontime	2009.6000018716
ontime2	2009.6000018716
ontime3	2009.6000018716
ontime5	2009.6000018716
ontime6	2009.6000018716
ontime7	2009.6000018716
ontime8	2009.6000018716
l1events	86063

2.1.4 Events

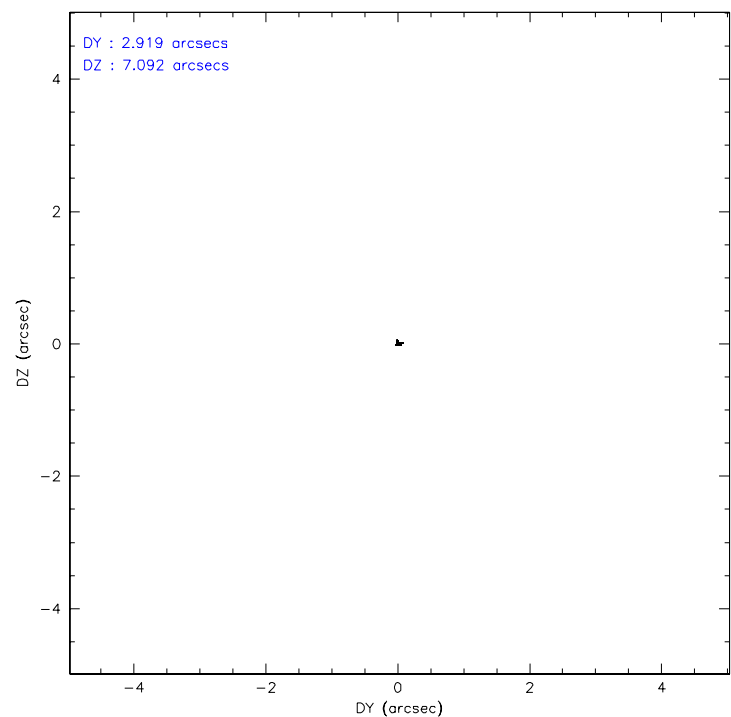
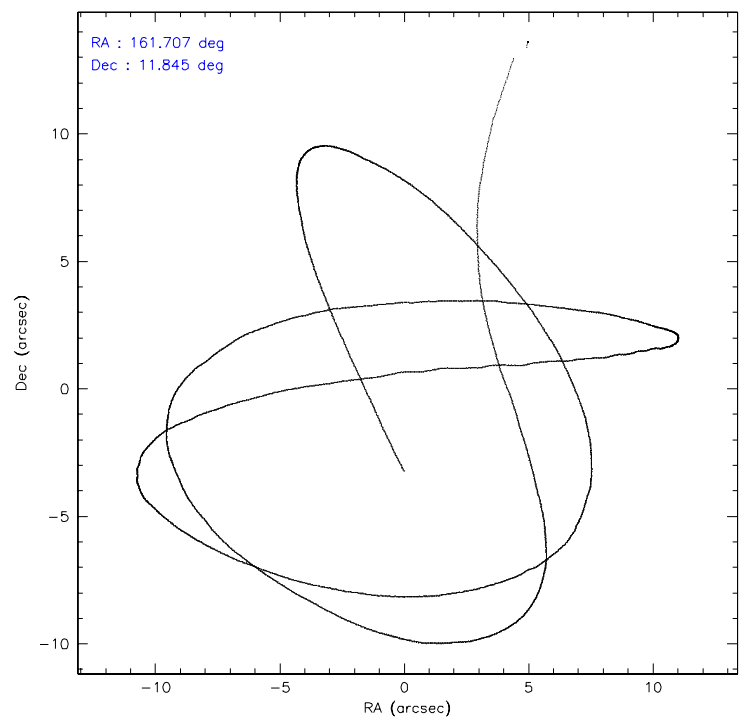
	ccd 2	ccd 3	ccd 5	ccd 6	ccd 7	ccd 8
level 1 events	12349	11598	17560	12455	15717	16384
rejected events	10861	10257	9408	11042	8969	13288
rejected %	87%	88%	53%	88%	57%	81%

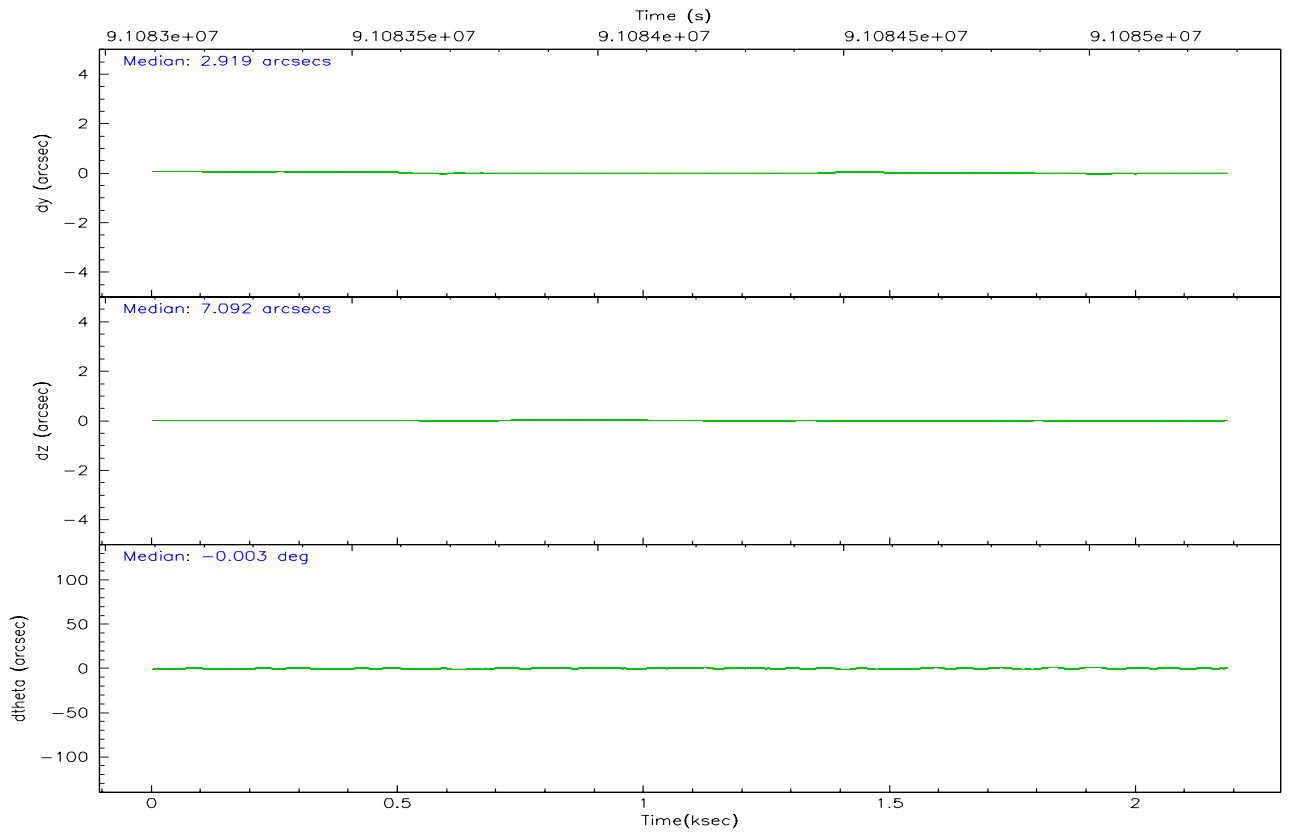
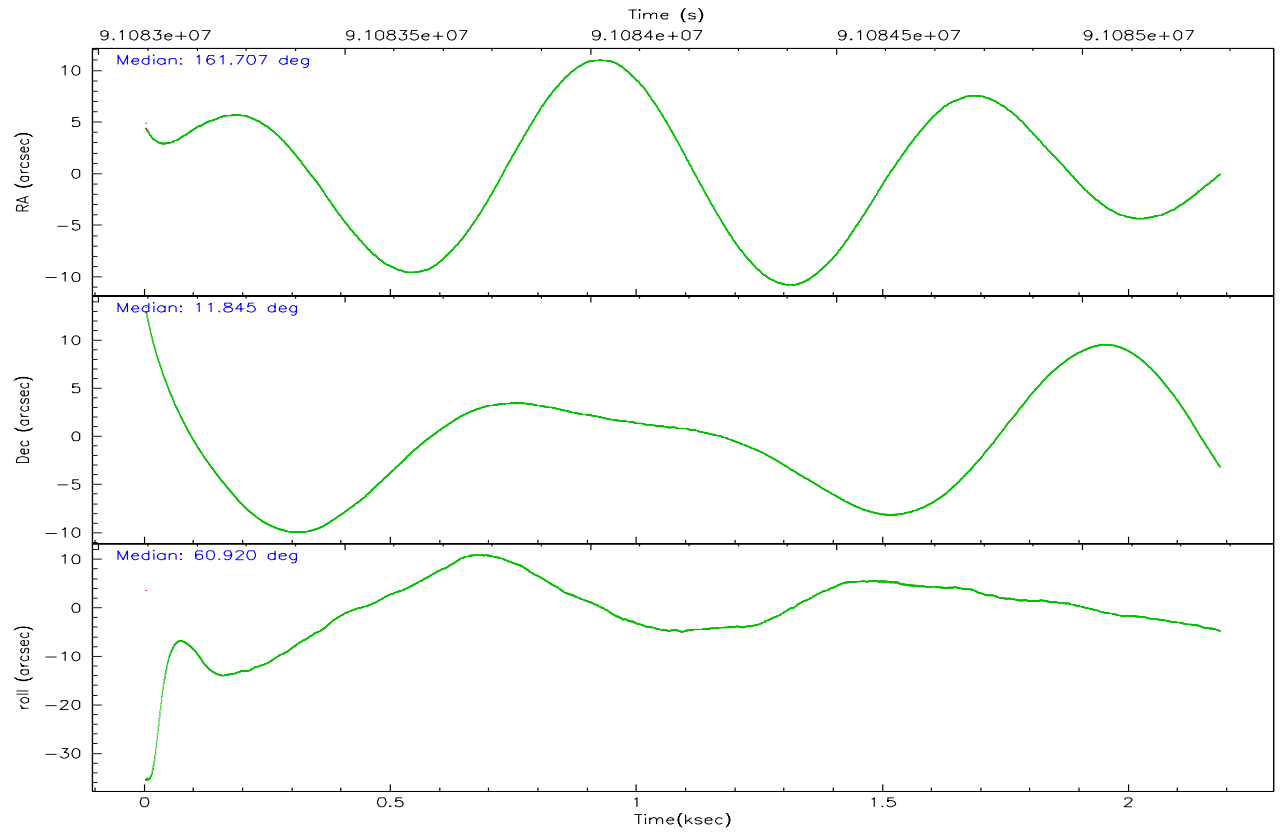
	ccd 2	ccd 3	ccd 5	ccd 6	ccd 7	ccd 8
grade 0 events	637	611	1222	582	690	899
	5%	5%	6%	4%	4%	5%
grade 1 events	2	3	193	3	13	12
	0%	0%	1%	0%	0%	0%
grade 2 events	313	242	2313	255	1325	720
	2%	2%	13%	2%	8%	4%
grade 3 events	129	128	330	145	630	288
	1%	1%	1%	1%	4%	1%
grade 4 events	143	138	365	145	652	245
	1%	1%	2%	1%	4%	1%
grade 5 events	432	439	1284	498	1479	631
	3%	3%	7%	3%	9%	3%
grade 6 events	267	226	3956	290	3483	951
	2%	1%	22%	2%	22%	5%
grade 7 events	10426	9811	7897	10537	7445	12638
	84%	84%	44%	84%	47%	77%

2.2 Compared Parameters

Parameter	Planned	Actual	Parameter	Planned	Actual
Instrument	ACIS	ACIS	Obspar format version number	6	6
Detector	ACIS-235678	ACIS-235678	Obspar file type	PREDICTED	ACTUAL
Grating	NONE	NONE	Obspar update status	NONE	UPDATED
Data mode	FAINT	FAINT	Number of optional ACIS chips dropped	0	0
Observation mode	POINTING	POINTING	On-chip summing requested	N	N
Pointing RA	161.707634	161.7070009812329	Subarray requested	NONE	NONE
Pointing Dec	11.817020	11.84445590177797	Alternating exposures requested	N	N
Pointing Roll	60.764814	60.92138493808569	Primary exposure time	3.200000	3.2
SIM focus pos (mm)	-0.684267	-0.6828225247311905			
SIM defocus (mm)	0	0.001444936568705701			
SIM translation stage pos (mm)	-190.132523	-190.1400660498719			
SIM translation stage offset (mm)	0	0.00754346686406393			
Observation start time	91083228.184000	91082122.23818199			
Observation start date	2000-11-20T04:52:44	2000-11-20T04:35:22			
Observation end time	91085228.184000	91085988.53832901			
Observation end date	2000-11-20T05:26:04	2000-11-20T05:39:48			
Read mode	TIMED	TIMED			

2.3 Aspect



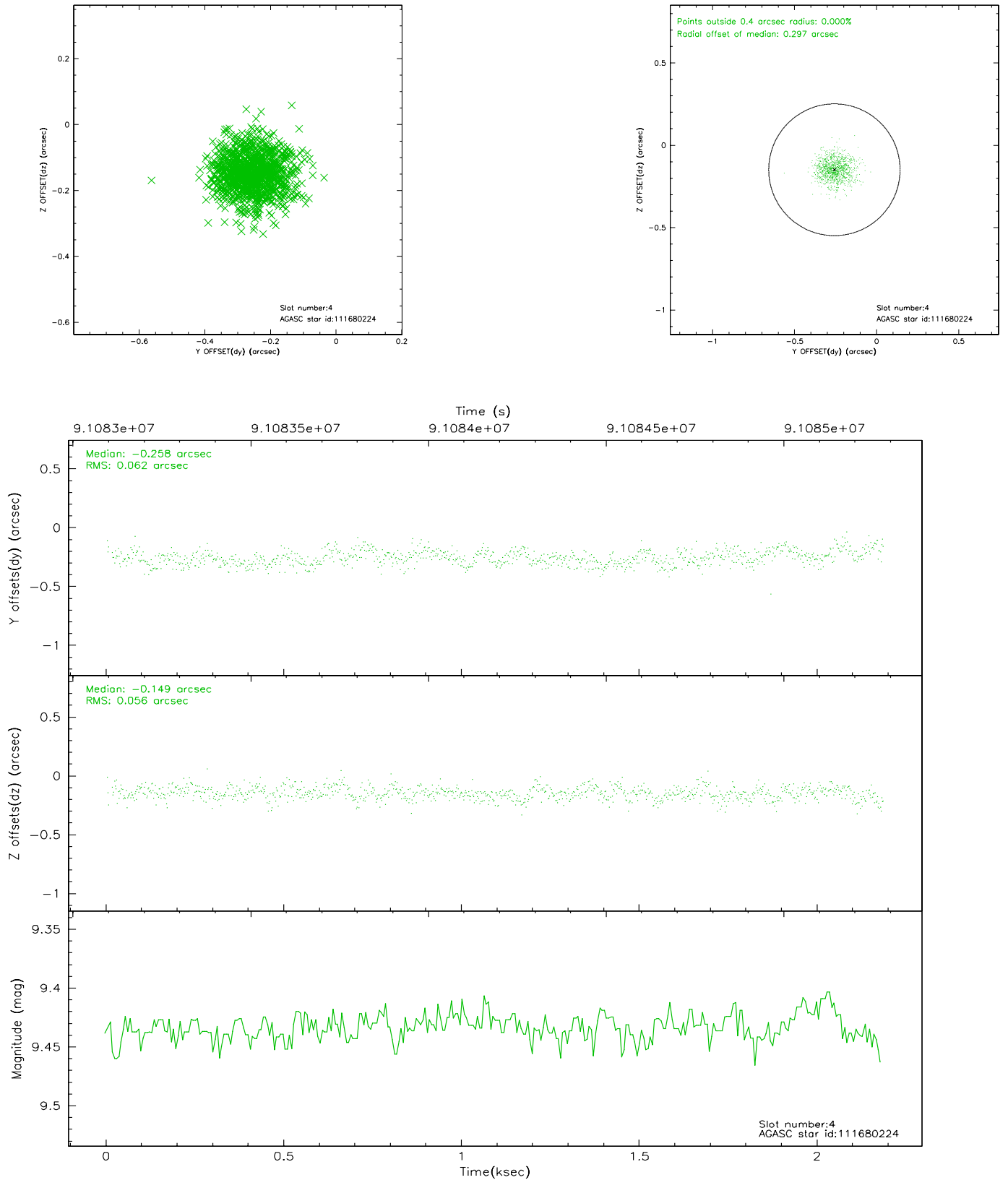


Slot Statistics

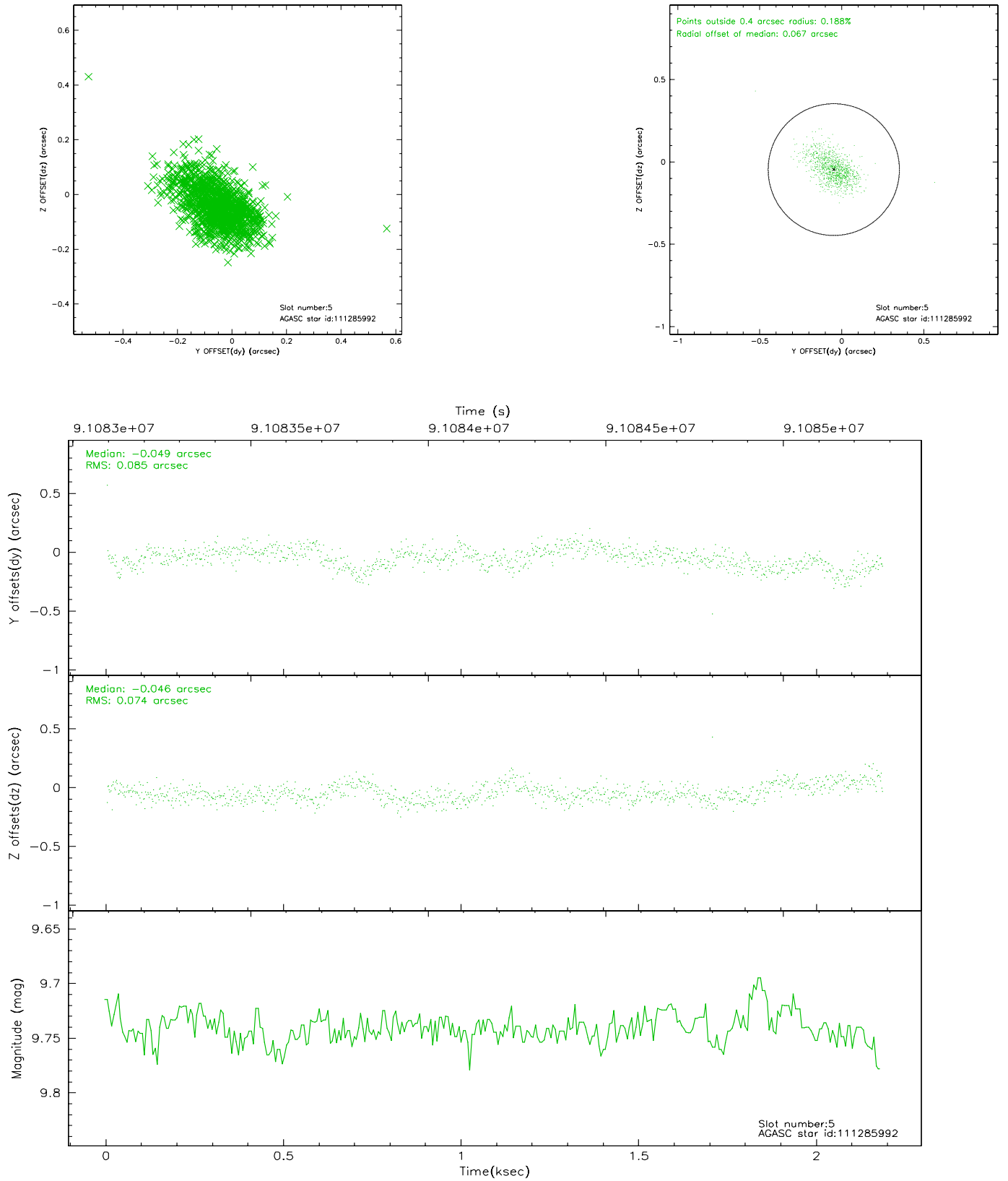
slot	status	id	mag	n_pts	med_dy	med_dz	dr1	dr2	ra	dec	mean_y	mean_z
0	FID	ACIS-S-2	7.12	533	0.011	0.036	0.007	0.014	0.000000	0.000000	-755.58	-1728.22
1	FID	ACIS-S-4	7.20	532	-0.091	-0.015	0.006	0.012	0.000000	0.000000	2156.27	177.09
2	FID	ACIS-S-5	7.24	533	0.049	-0.012	0.006	0.010	0.000000	0.000000	-1804.52	174.21
3	UNUSED		0.00	0	0.000	0.000	0.000	0.000	0.000000	0.000000	0.00	0.00
4	GUIDE	111680224	9.43	1061	-0.258	-0.149	0.089	0.141	161.634669	12.601106	2337.56	1602.54
5	GUIDE	111285992	9.74	1066	-0.049	-0.046	0.114	0.193	162.048017	11.891969	823.66	-912.50
6	GUIDE	111286408	9.15	1066	0.302	-0.026	0.070	0.113	161.652685	11.184124	-2082.23	-944.20
7	GUIDE	111286848	9.56	1065	0.008	0.220	0.097	0.163	162.100662	11.107254	-1552.93	-2459.57

2.4 Star Slots

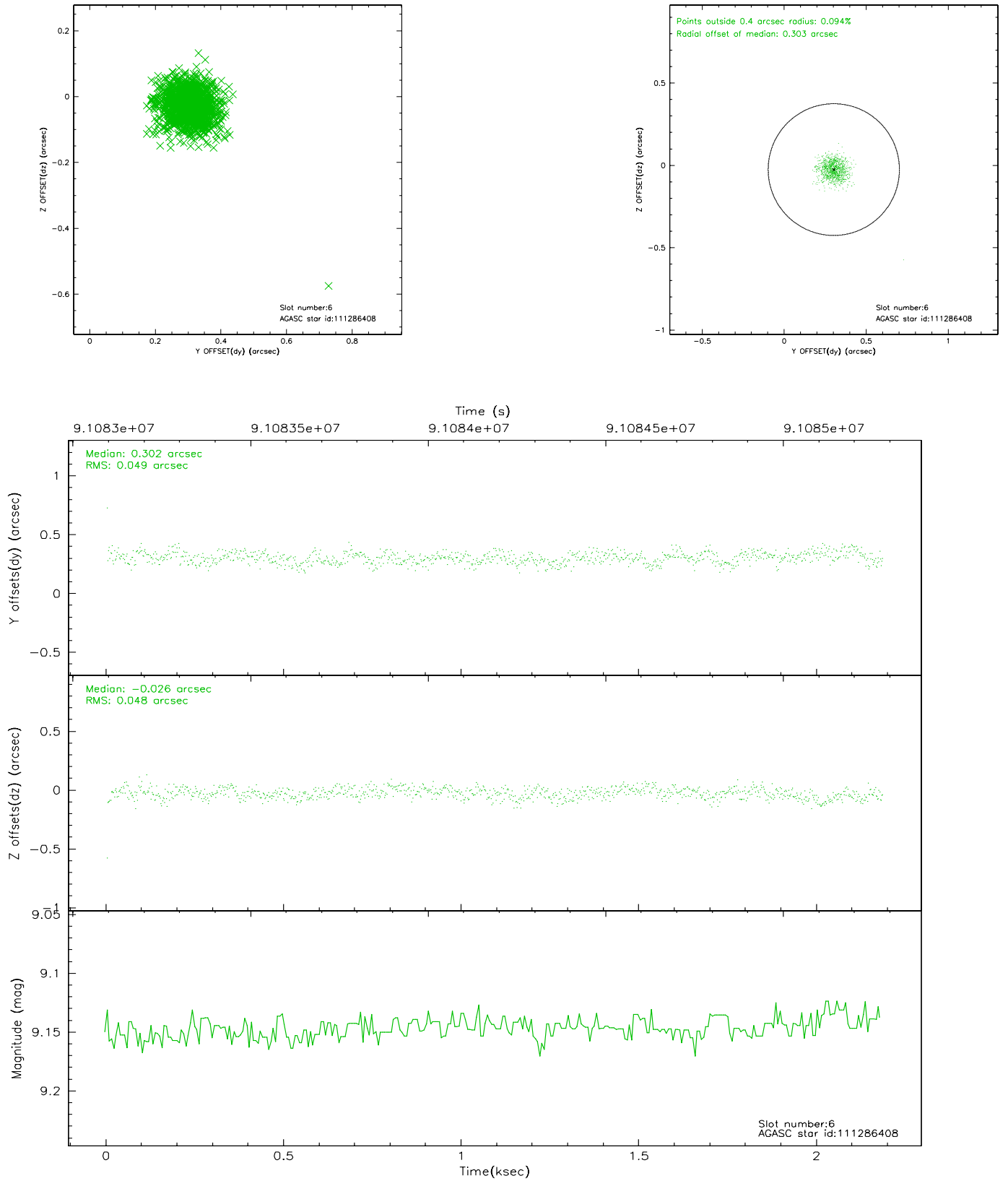
2.4.1 Slot 4



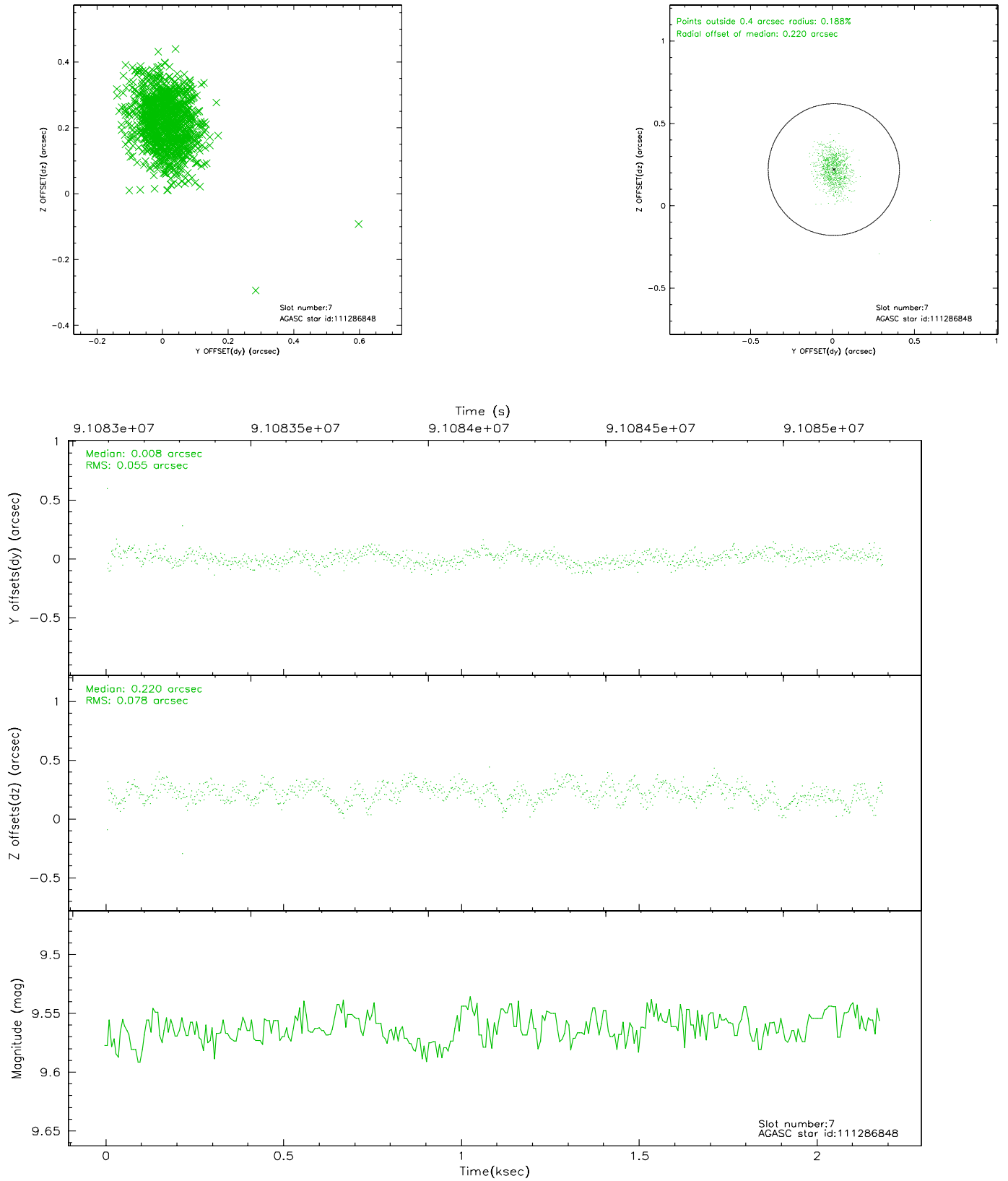
2.4.2 Slot 5



2.4.3 Slot 6

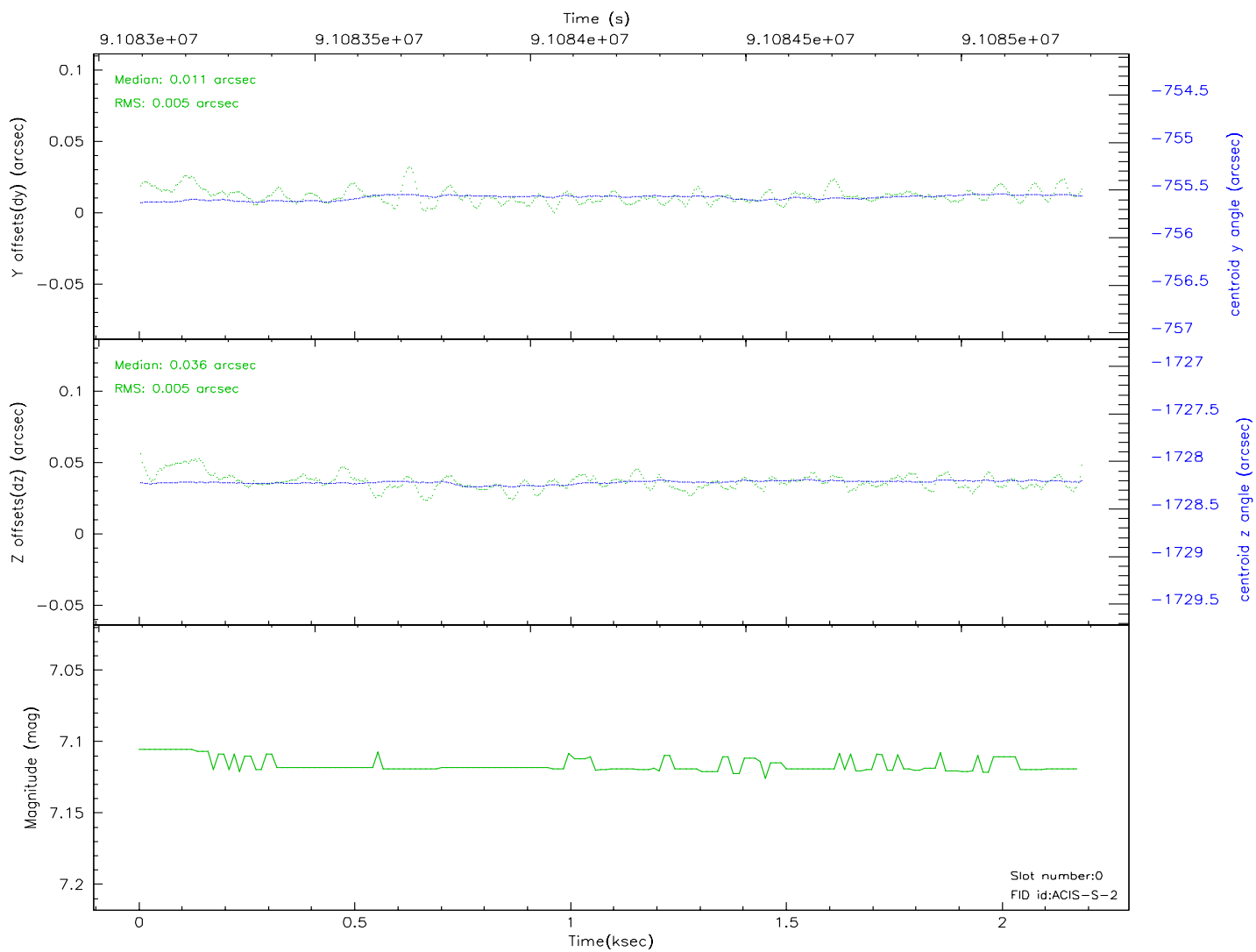
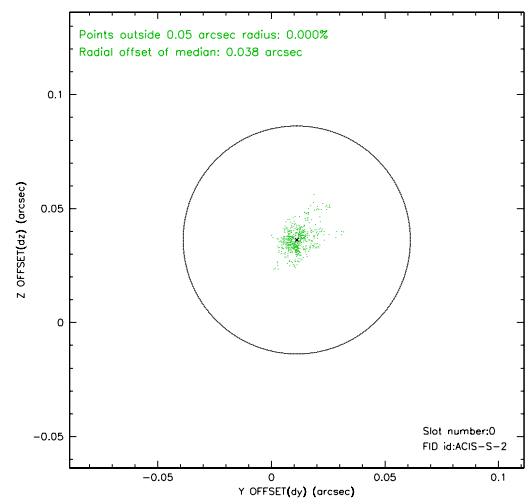
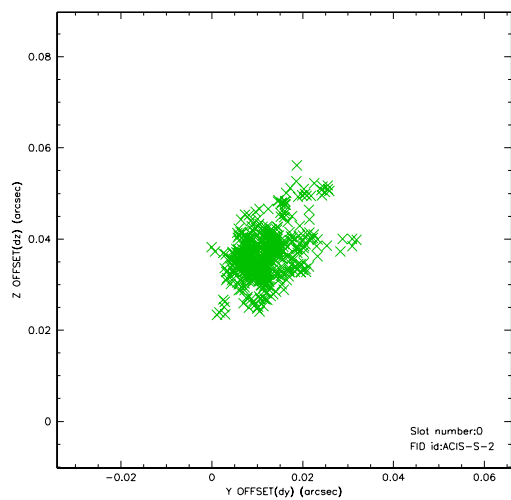


2.4.4 Slot 7

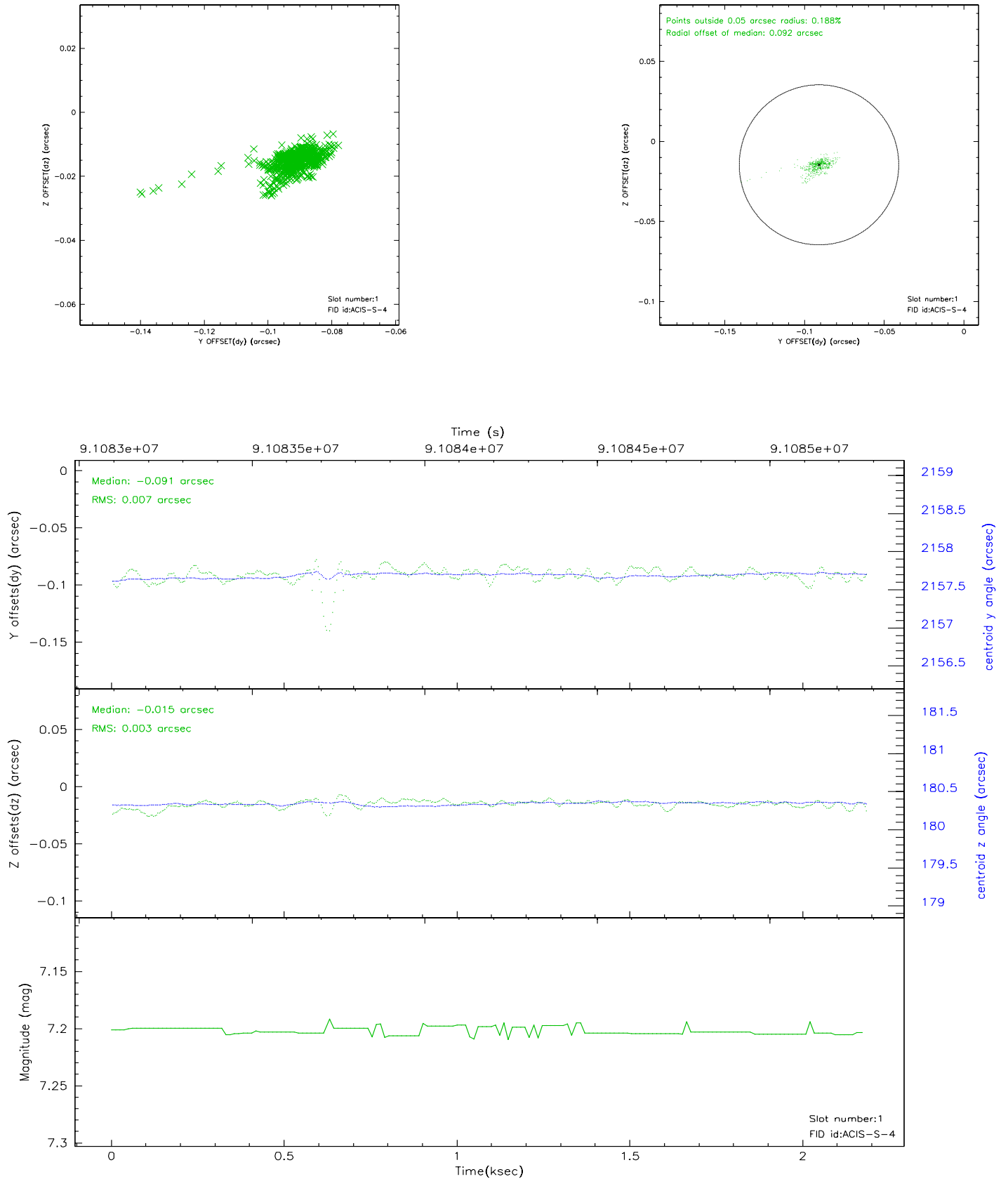


2.5 FID Slots

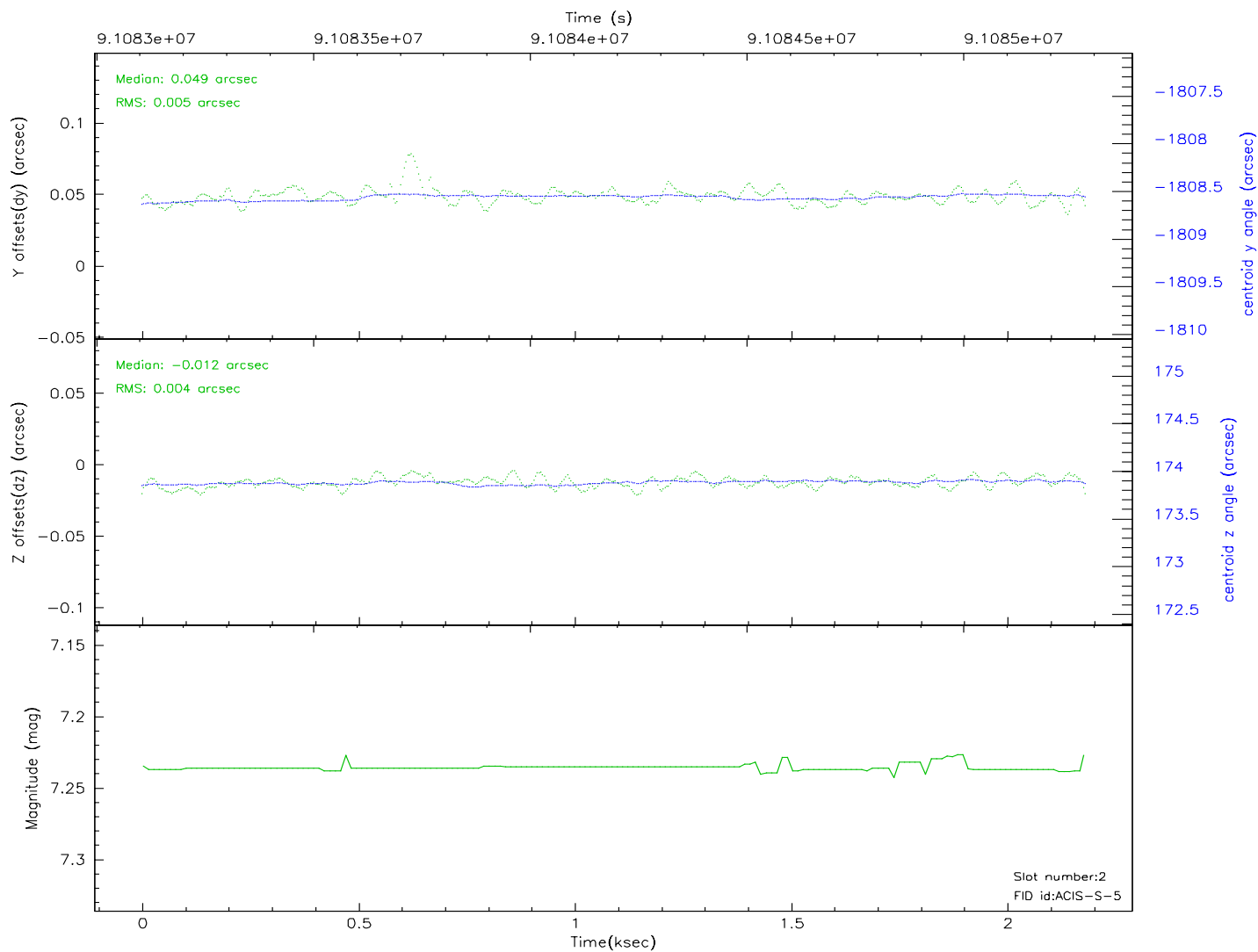
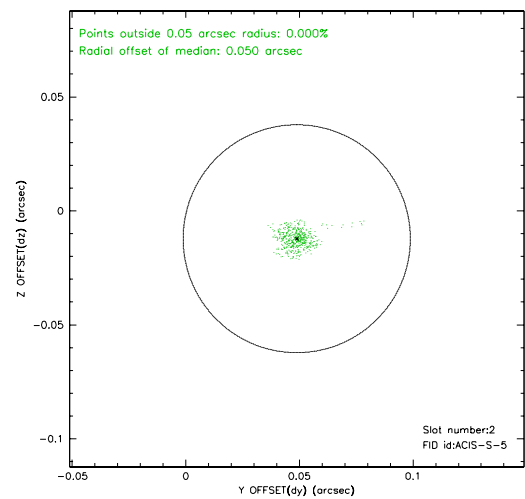
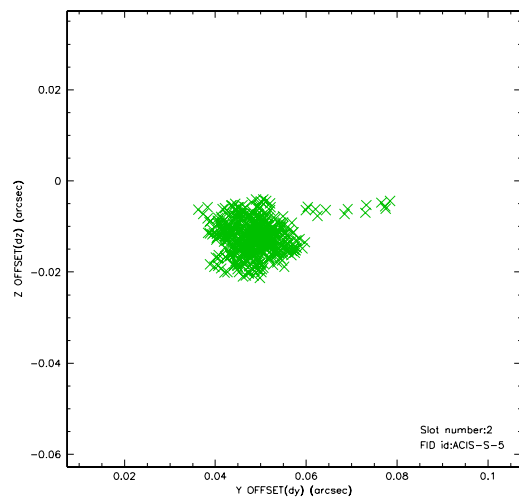
2.5.1 Slot 0



2.5.2 Slot 1

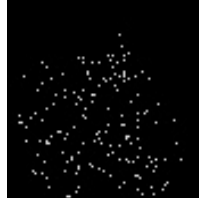


2.5.3 Slot 2



3 Point Sources

18.49 arcmin



A Summary

A.1 Status

V&V Scientist	Beth Sundheim
V&V Date (YYYY-MM-DD)	2007.06.18
V&V Edition	1
V&V Disposition and Status	OK
V&V Charge Time	2.012

A.2 Comments

Slot 3 was not used in this observation.