

V&V Reference Report

L2 ASCDS Version : 8.5.1.1

Observation 3871 - L2 Version 6
Chandra X-Ray Center

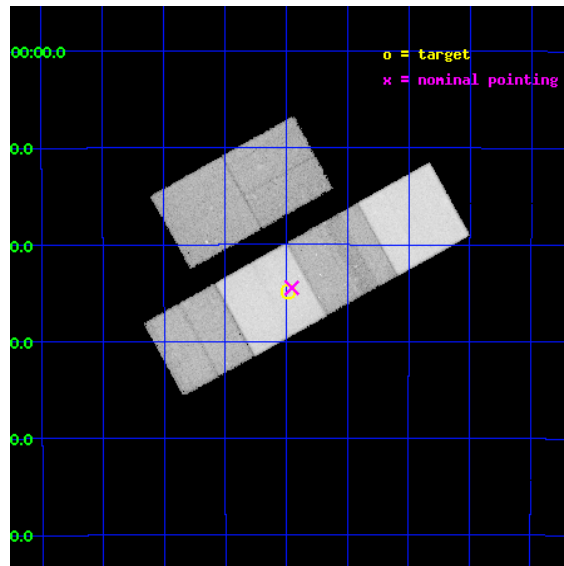
L2 Processing Date : Feb 14 2013

Contents

1	Front	2
2	OBI	3
2.1	OBI	3
2.1.1	Images	3
2.1.2	Bias	3
2.1.3	Parameters	4
2.1.4	Events	4
2.2	Compared Parameters	5
2.3	Aspect	6
2.4	Star Slots	9
2.4.1	Slot 3	9
2.4.2	Slot 4	10
2.4.3	Slot 5	11
2.4.4	Slot 6	12
2.4.5	Slot 7	13
2.5	FID Slots	14
2.5.1	Slot 0	14
2.5.2	Slot 1	15
2.5.3	Slot 2	16
A	Summary	17
A.1	Status	17
A.2	Comments	17

1 Front

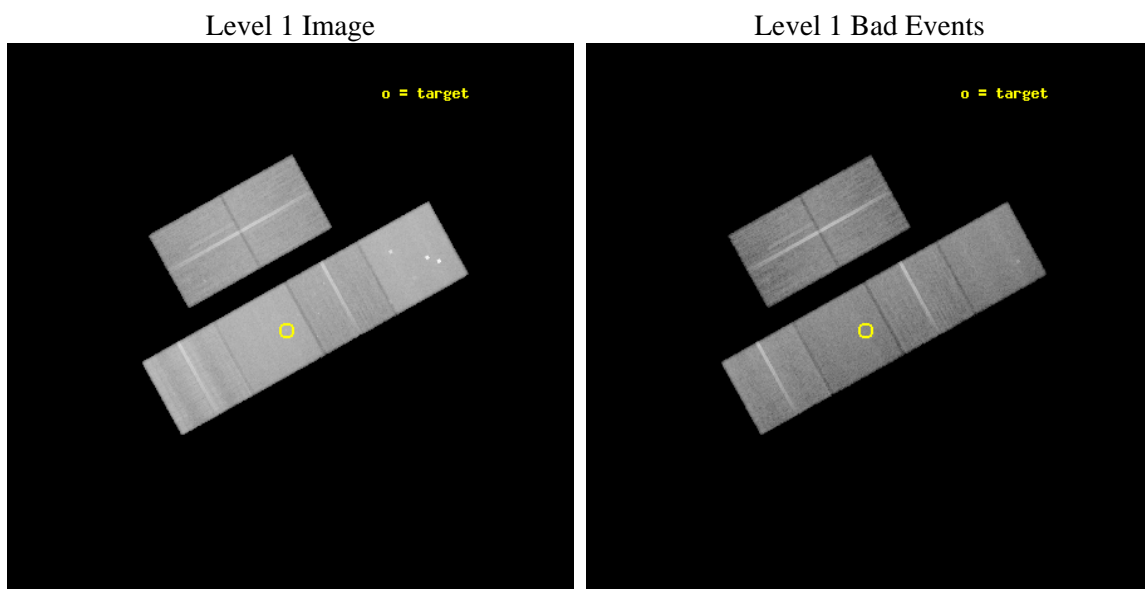
seq_num	500350	Sequence number
obs_id	3871	Observation id
title	PROMPT CHANDRA OBSERVATIONS OF NEARBY SUPERNOVAE	Proposal title
observer	Prof. Walter Lewin	Principal investigator
object	SN 2003BG	Source name
dtcycle	0	
cycle	P	events from which exps? Prim/Second/Both
ra_targ	62.7475	Observer's specified target RA [deg]
dec_targ	-31.413972	Observer's specified target Dec [deg]
ra_nom	62.738717213146	Nominal RA [deg]
dec_nom	-31.407861486062	Nominal Dec [deg]
roll_nom	150.91601185915	Nominal Roll [deg]
revision	6	Processing version of data
ontime	41083.393285185	Sum of GTIs [s]
livetime	40563.170621959	Livetime [s]
ontime2	41083.43435511	Sum of GTIs [s]
ontime3	41086.511125445	Sum of GTIs [s]
ontime5	41083.352245182	Sum of GTIs [s]
ontime6	41083.311205178	Sum of GTIs [s]
ontime7	41083.393285185	Sum of GTIs [s]
ontime8	41076.747164786	Sum of GTIs [s]
l2events	538982	Number of level 2 events



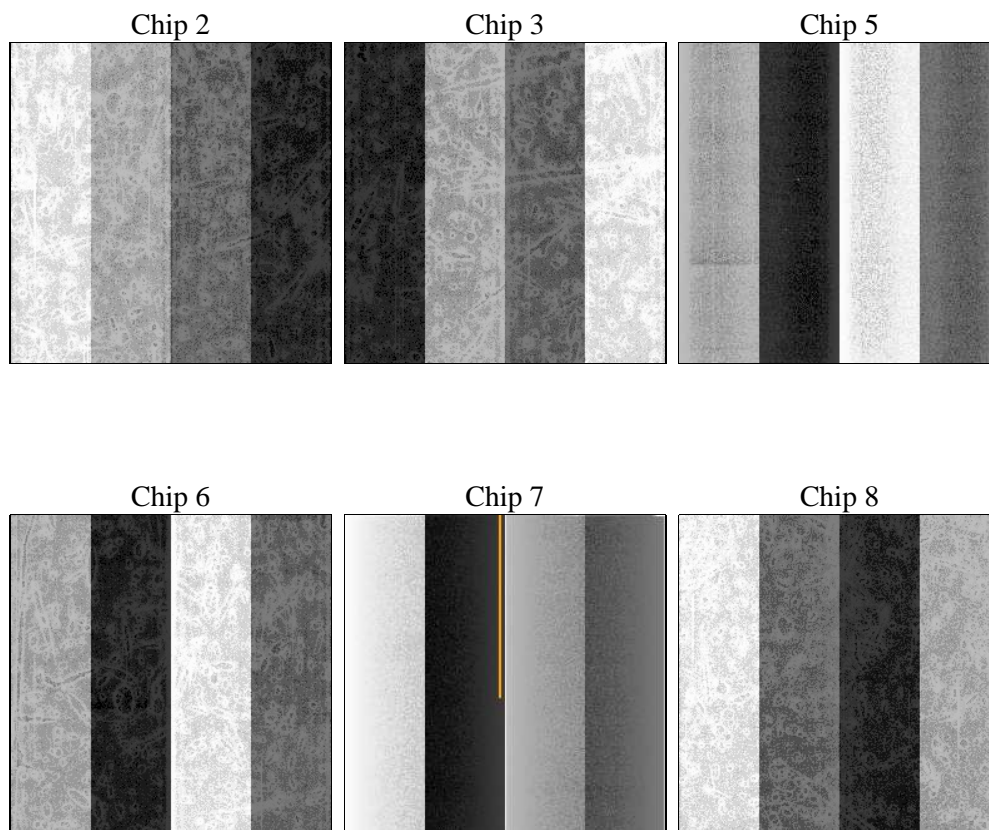
2 OBI

2.1 OBI

2.1.1 Images



2.1.2 Bias



2.1.3 Parameters

obi_num	1	Obi number	sched_exp_time	48862.115000	[s] Scheduled observation exposure time
ascdsver	8.5.1.1	Processing system revision	ontime	41083.393285185	Sum of GTIs [s]
caldsver	4.5.5	 	ontime2	41083.43435511	Sum of GTIs [s]
date	2013-02-14T00:05:44	Date and time of file creation	ontime3	41086.511125445	Sum of GTIs [s]
revision	6	Processing version of data	ontime5	41083.352245182	Sum of GTIs [s]
			ontime6	41083.311205178	Sum of GTIs [s]
			ontime7	41083.393285185	Sum of GTIs [s]
			ontime8	41076.747164786	Sum of GTIs [s]
			l1events	1921406	Number of level 1 events

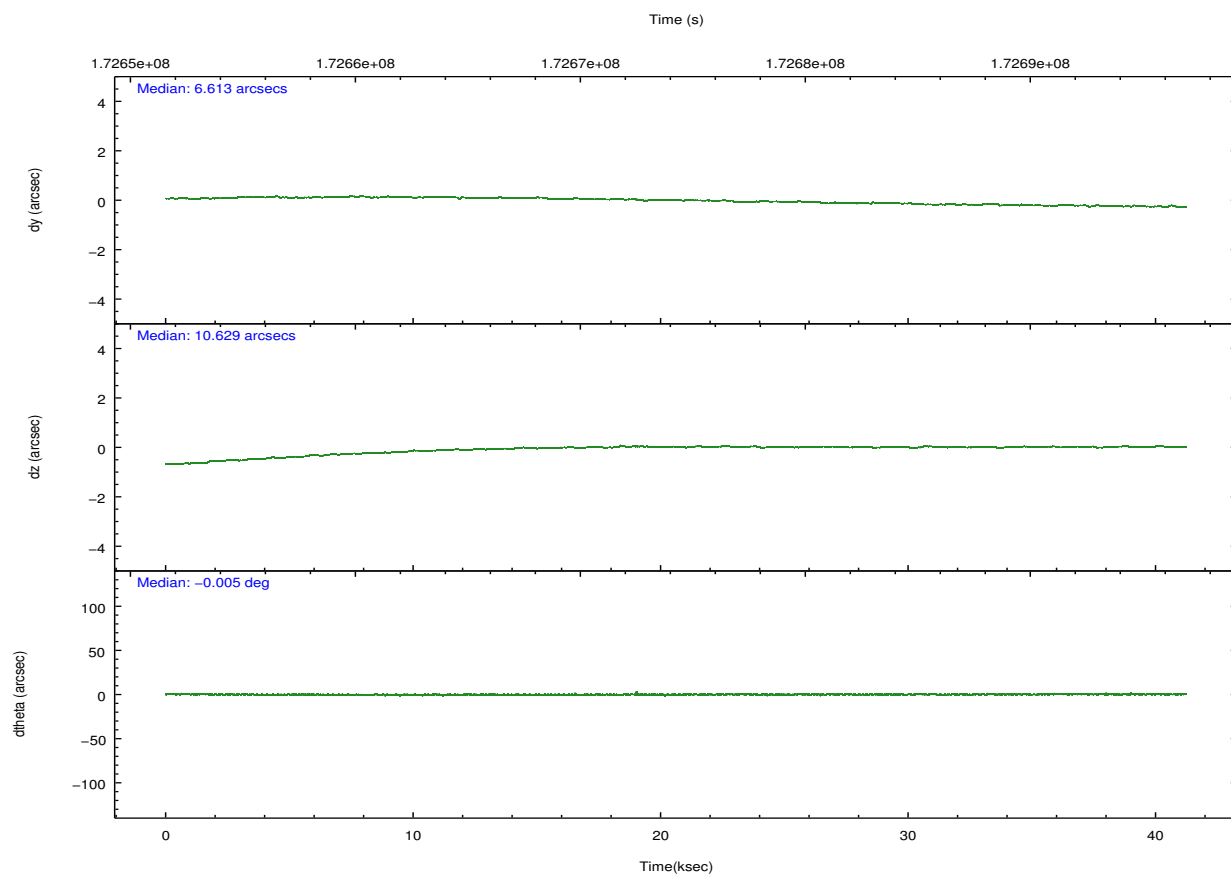
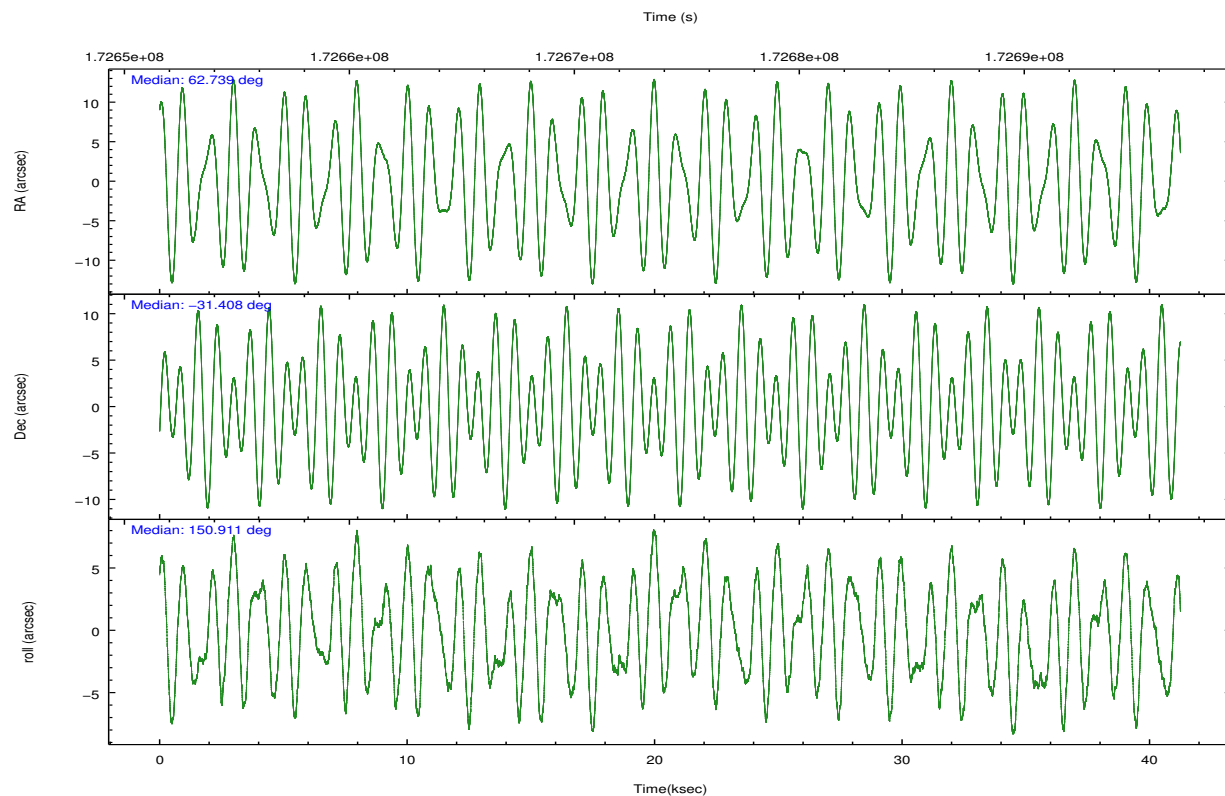
2.1.4 Events

	ccd 2	ccd 3	ccd 5	ccd 6	ccd 7	ccd 8		ccd 2	ccd 3	ccd 5	ccd 6	ccd 7	ccd 8
level 1 events	262418	248589	406487	266235	364540	373137	grade 0 events	26287	24233	30375	27715	16758	52871
rejected events	214608	203377	197877	214204	189503	243797		10%	9%	7%	10%	4%	14%
rejected %	81%	81%	48%	80%	51%	65%	grade 1 events	242	194	864	195	299	373
								0%	0%	0%	0%	0%	0%
							grade 2 events	8889	8609	60445	11032	32949	21435
								3%	3%	14%	4%	9%	5%
							grade 3 events	3124	3210	9260	3294	14831	16569
								1%	1%	2%	1%	4%	4%
							grade 4 events	3458	3215	9058	3245	14699	15386
								1%	1%	2%	1%	4%	4%
							grade 5 events	9201	10134	26815	10904	30914	14425
								3%	4%	6%	4%	8%	3%
							grade 6 events	6722	6640	101263	7480	97832	23913
								2%	2%	24%	2%	26%	6%
							grade 7 events	204495	192354	168407	202370	156258	228165
								77%	77%	41%	76%	42%	61%

2.2 Compared Parameters

Parameter	Planned	Actual	Parameter	Planned	Actual
Instrument	ACIS	ACIS	Obspar format version number	7	7
Detector	ACIS-235678	ACIS-235678	Obspar file type	PREDICTED	ACTUAL
Grating	NONE	NONE	Obspar update status	OVERRIDE	OVERRIDE
Data mode	FAINT	FAINT	Number of optional ACIS chips dropped	0	0
Observation mode	POINTING	POINTING	On-chip summing requested	N	N
[deg] Pointing RA	62.770604	62.73871721314595	Subarray requested	NONE	NONE
[deg] Pointing Dec	-31.407058	-31.40786148606186	Alternating exposures requested	N	N
[deg] Pointing Roll	150.775997	150.916011859153	[s] Primary exposure time	3.2	3.2
[mm] SIM focus pos	-0.6828225247311905	-0.6828225247311905			
[mm] SIM defocus	0.001444942264670179	0.001444942264670179			
[mm] SIM translation stage pos	-190.1425803651734	-190.1425803651734			
[mm] SIM translation stage offset	0.01005726120618533	0.01005726120618533			
[s] Observation start time (MET)	172653634.184000	172653634.184			
Observation start date	2003-06-22T07:19:30	2003-06-22T07:20:34			
[s] Observation end time (MET)	172694884.000000	172694884			
Observation end date	2003-06-22T18:48:04	2003-06-22T18:48:03			
Read mode	TIMED	TIMED			

2.3 Aspect

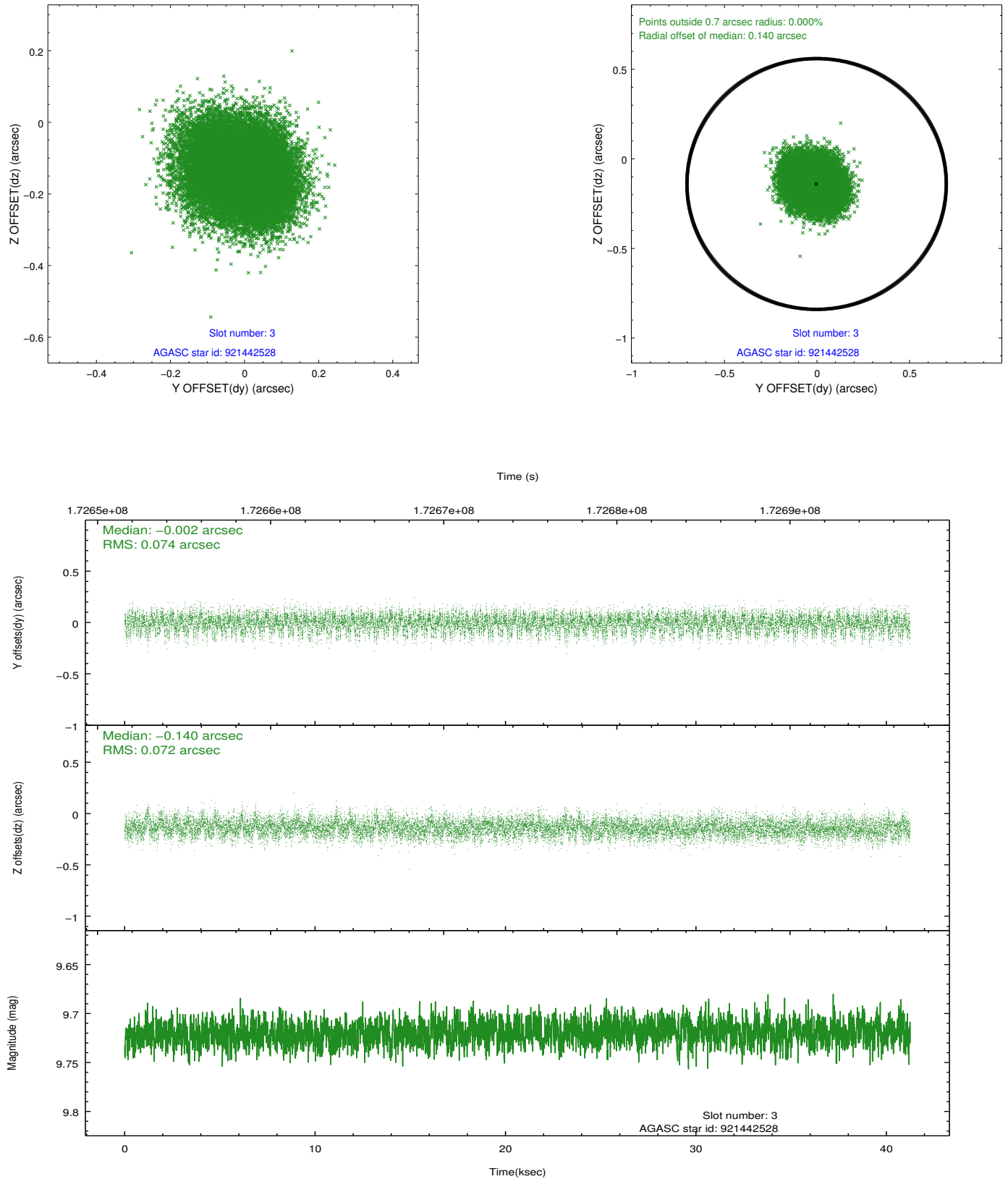


Slot Statistics

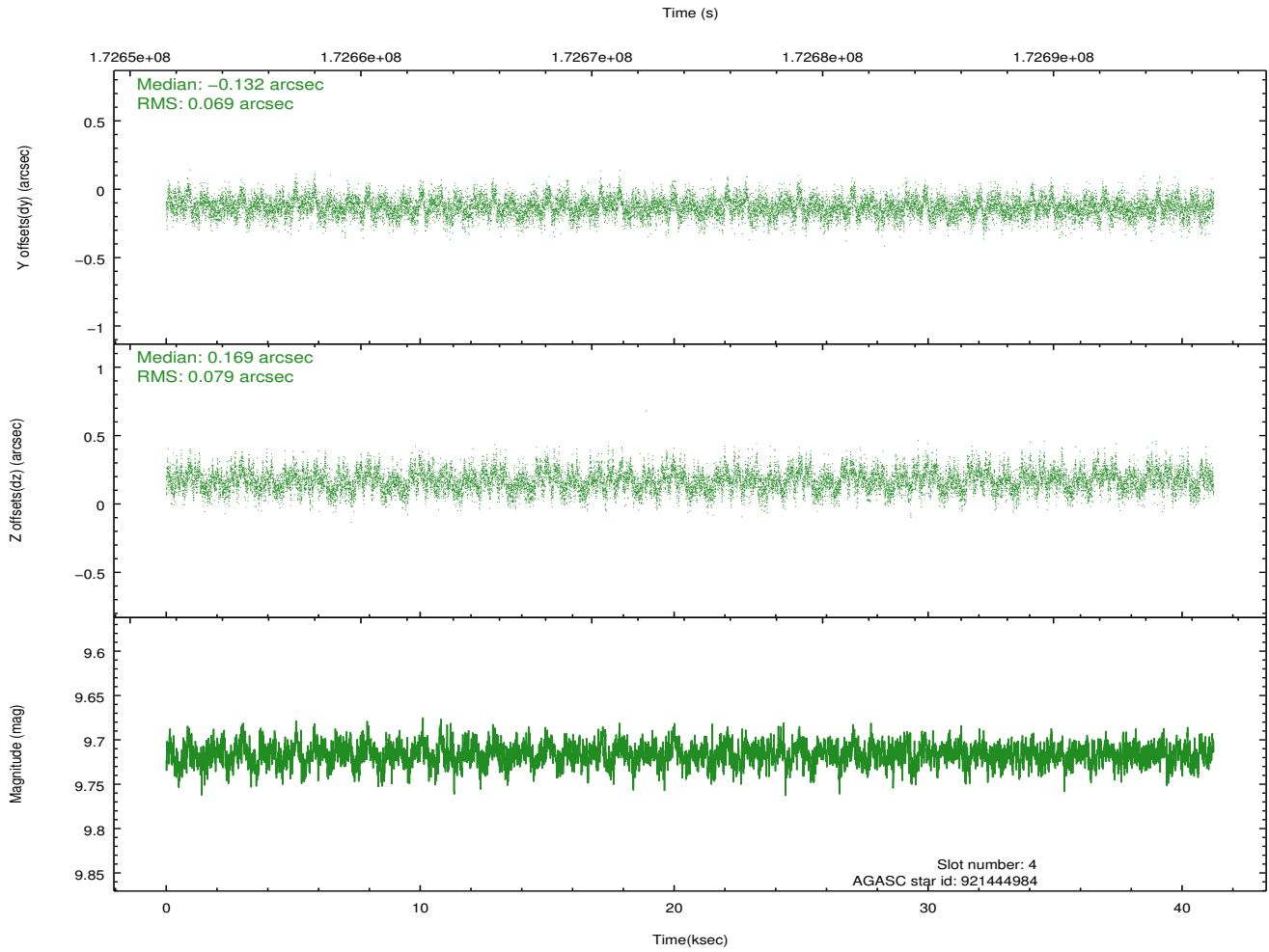
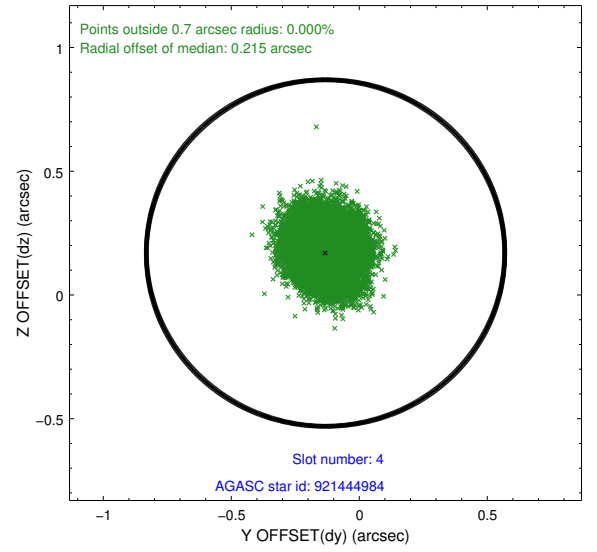
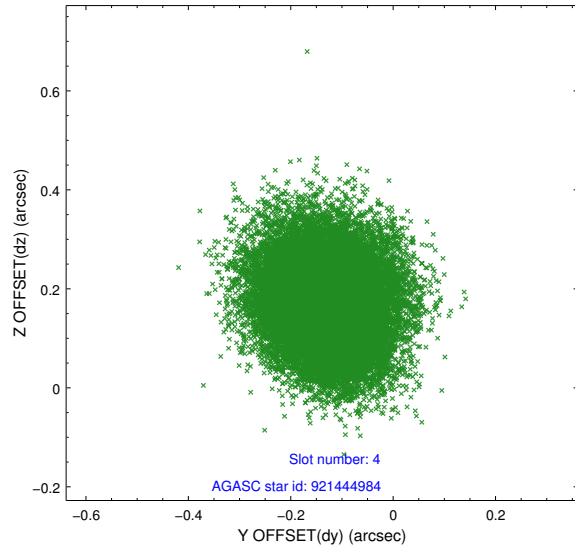
slot	status	id	mag	n_pts	med_dy	med_dz	dr1	dr2	ra	dec	mean_y	mean_z
0	FID	ACIS-S-2	7.11	10058	-0.055	-0.011	0.007	0.012	0.000000	0.000000	-759.34	-1731.76
1	FID	ACIS-S-4	7.21	10058	0.056	0.030	0.007	0.012	0.000000	0.000000	2154.00	176.81
2	FID	ACIS-S-5	7.23	10059	-0.032	-0.010	0.008	0.014	0.000000	0.000000	-1812.19	170.37
3	GUIDE	921442528	9.72	20105	-0.002	-0.140	0.111	0.178	62.194584	-31.879140	704.81	2347.11
4	GUIDE	921444984	9.72	20108	-0.132	0.169	0.113	0.181	62.566305	-30.821839	1579.83	-1529.11
5	GUIDE	921446000	9.96	20106	0.062	-0.037	0.154	0.242	62.235422	-31.341380	1549.87	600.81
6	GUIDE	922363888	8.72	20112	0.108	0.140	0.078	0.124	63.308834	-31.283379	-1229.22	-1193.22
7	GUIDE	922365648	7.51	20114	-0.042	-0.111	0.162	0.246	63.098764	-31.581103	-1185.48	56.74

2.4 Star Slots

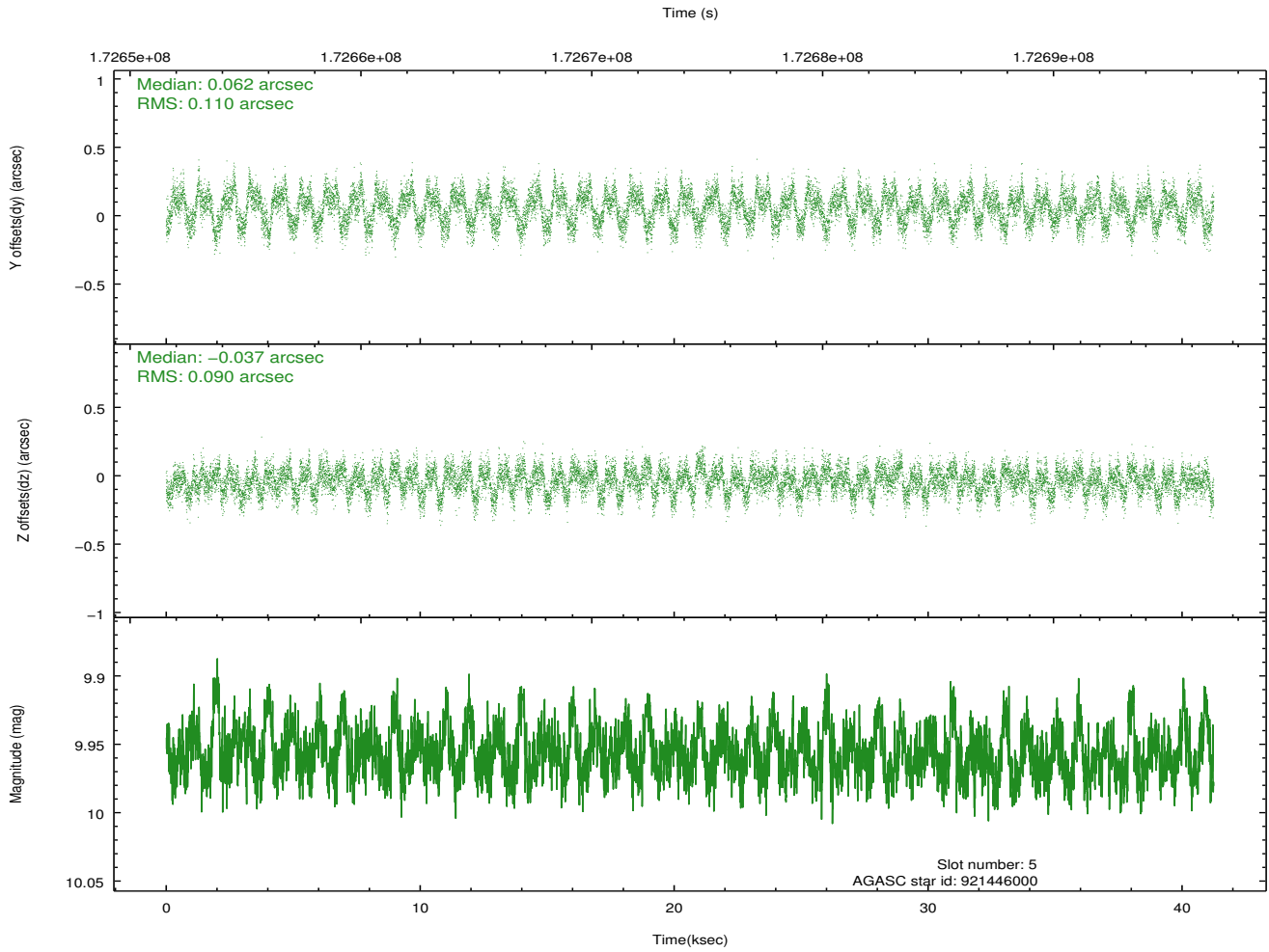
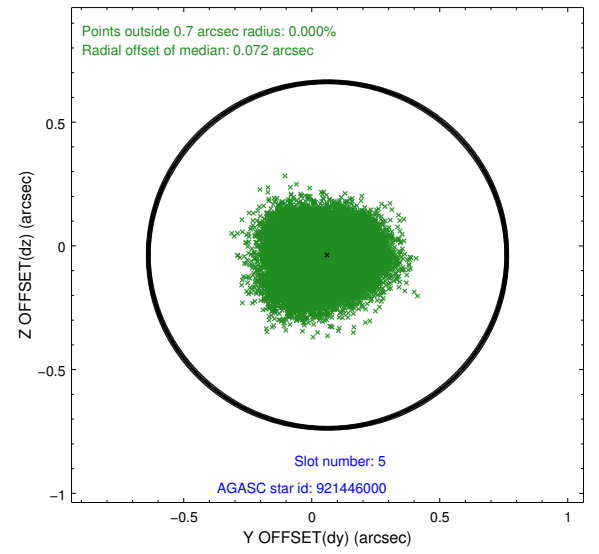
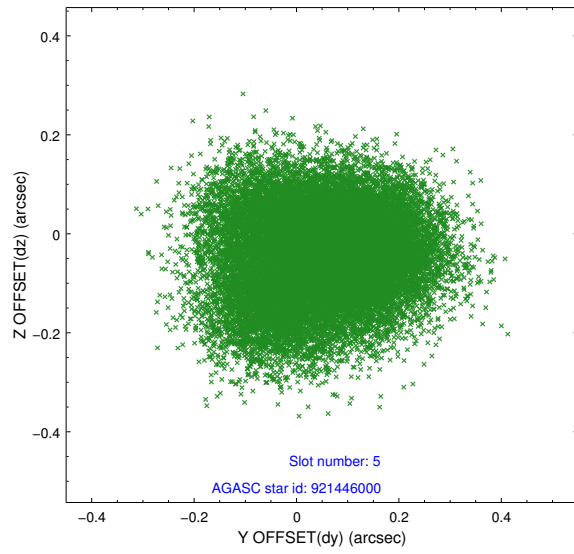
2.4.1 Slot 3



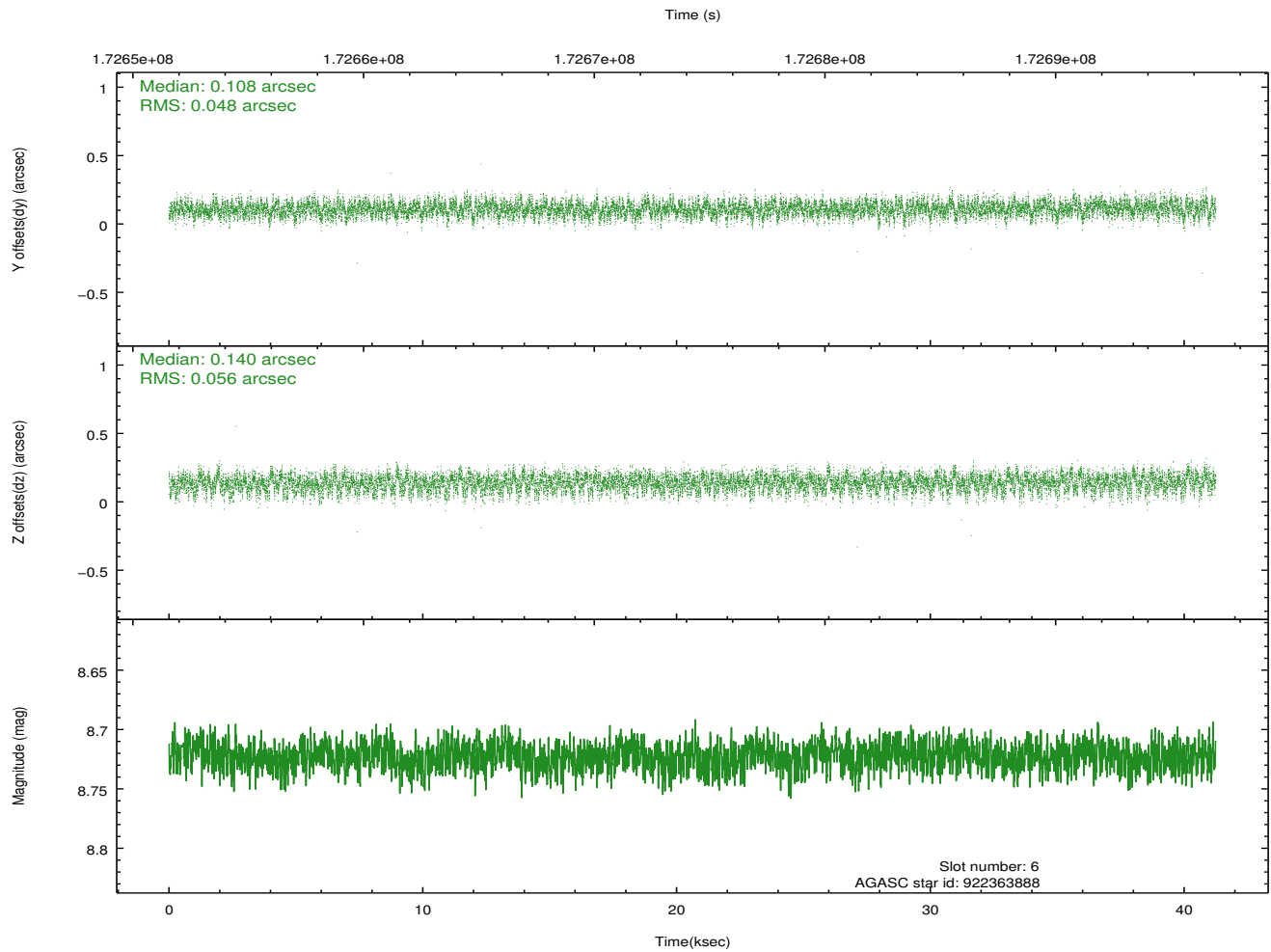
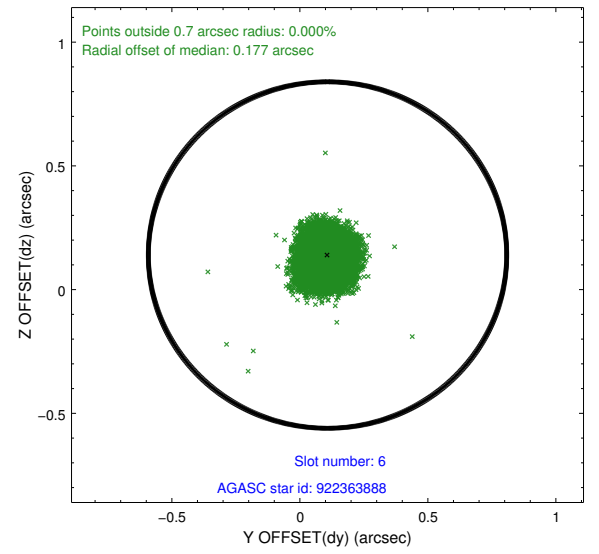
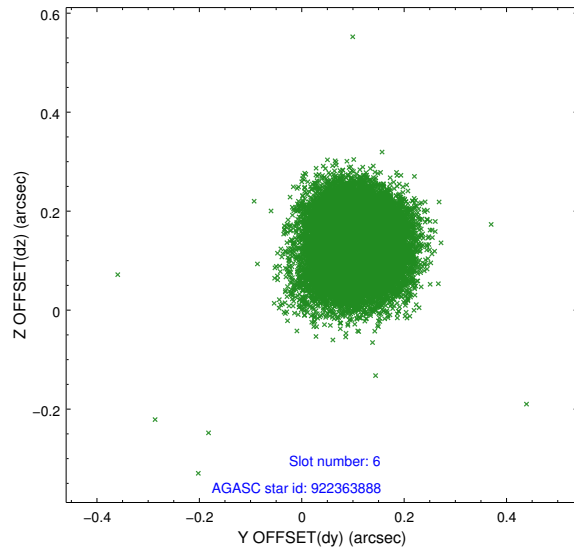
2.4.2 Slot 4



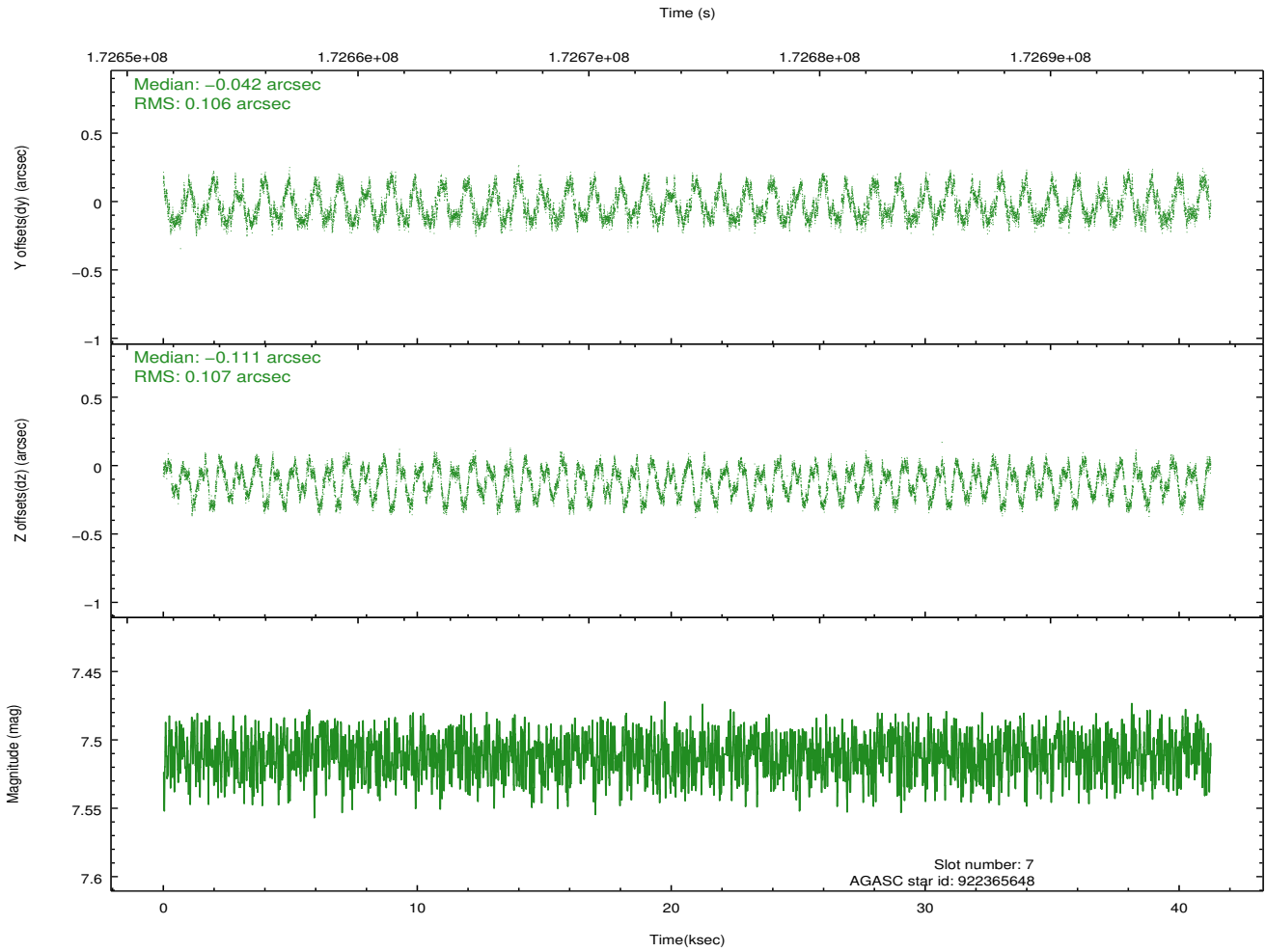
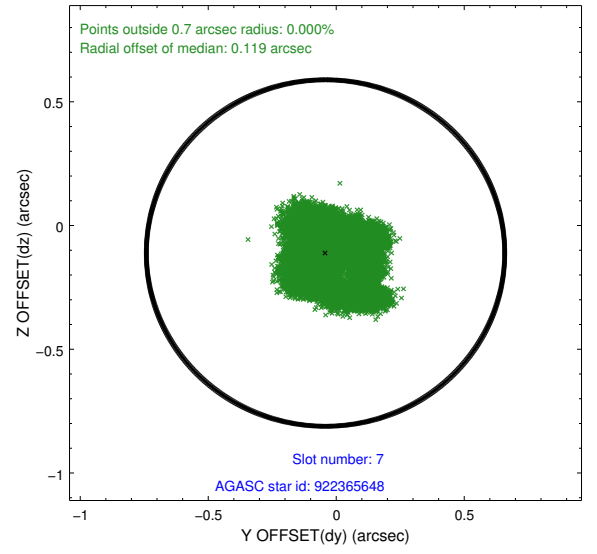
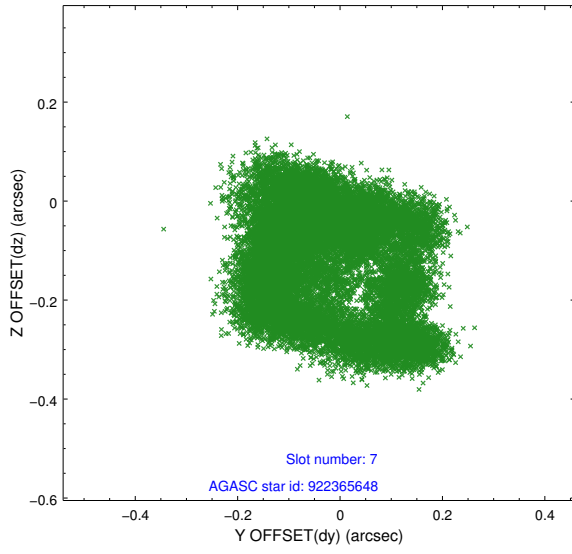
2.4.3 Slot 5



2.4.4 Slot 6

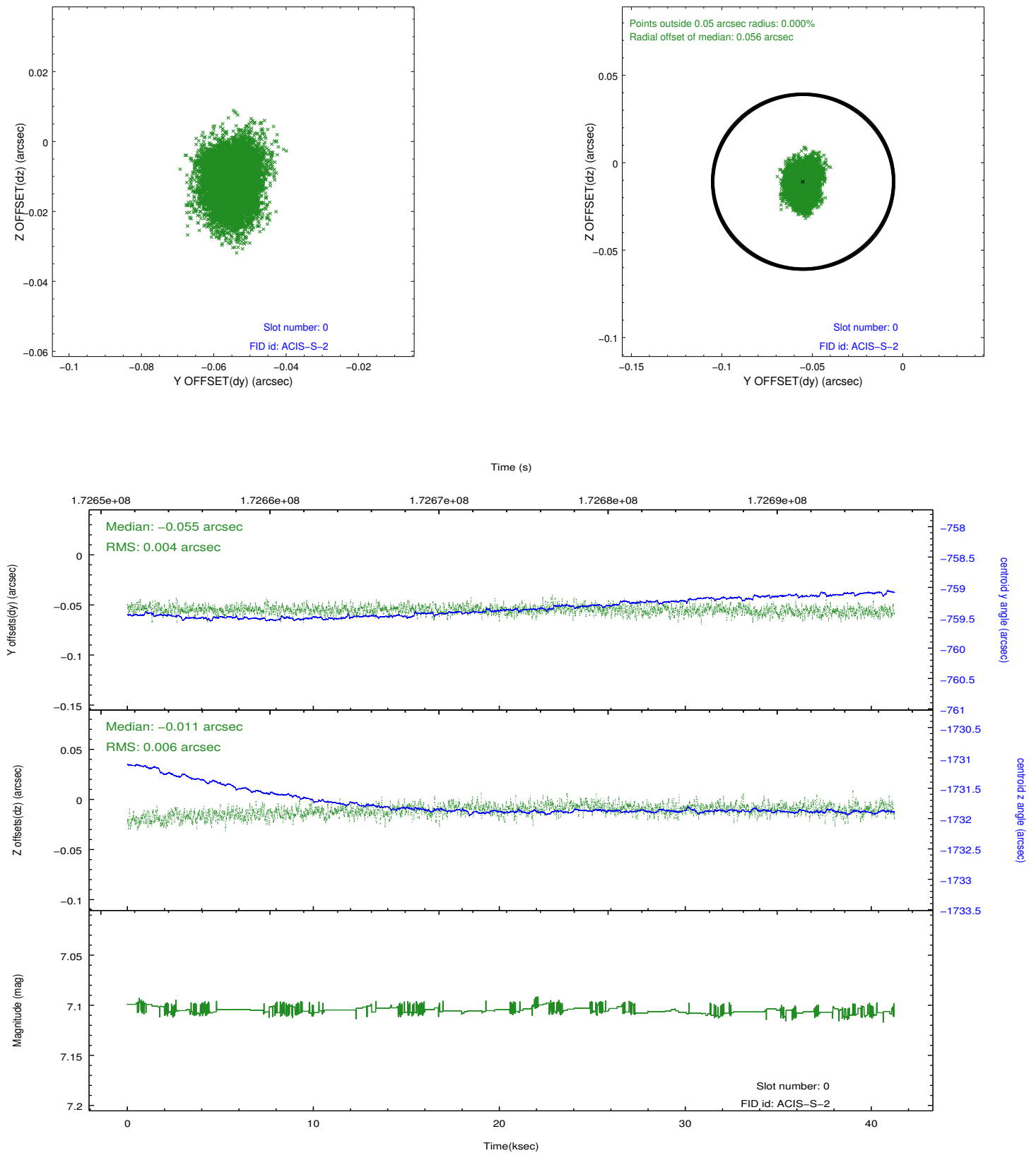


2.4.5 Slot 7

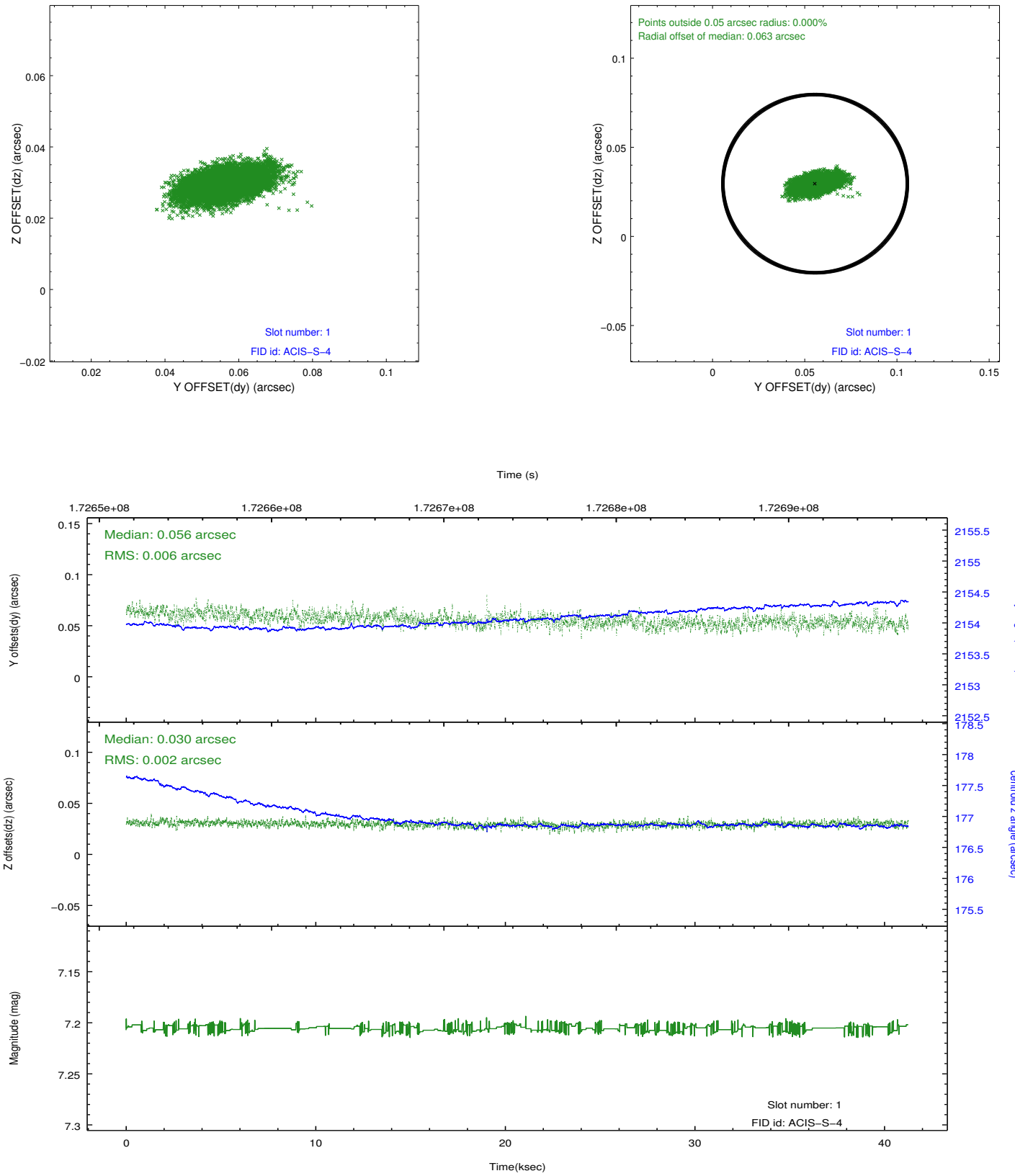


2.5 FID Slots

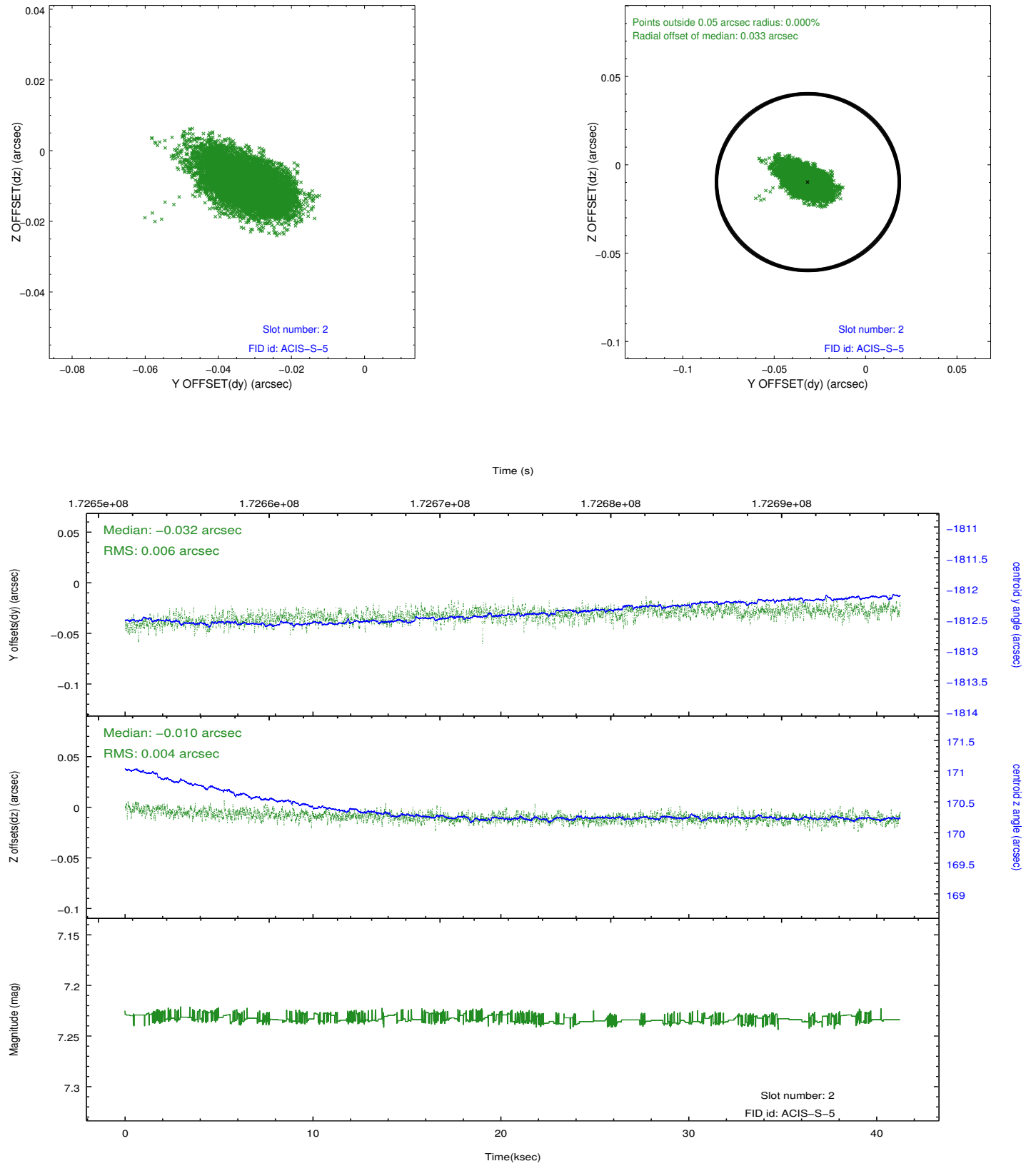
2.5.1 Slot 0



2.5.2 Slot 1



2.5.3 Slot 2



A Summary

A.1 Status

V&V Scientist	Jen Lauer
V&V Date (YYYY-MM-DD)	2013.02.15
V&V Edition	1
V&V Disposition and Status	OK
V&V Charge Time	41.19

A.2 Comments

Charge time for this ObsId remains at previous value of 41.19 ks although with the current processing the charge time would have been 41.08 ksec.

=====

This observation was interrupted by safing of the science instruments onboard Chandra due to high solar radiation environment. The observation was interrupted at 2003:173:18:48:41. Due to a high radiation environment, the instruments were safed and the observation terminated early. This observation has been reprocessed so that the aspect solution correctly handles the instrument safing and maneuver activities at the end of the observation.