

V&V Reference Report

L2 ASCDS Version : 7.6.8

Observation 3801 - L2 Version 001
Chandra X-Ray Center

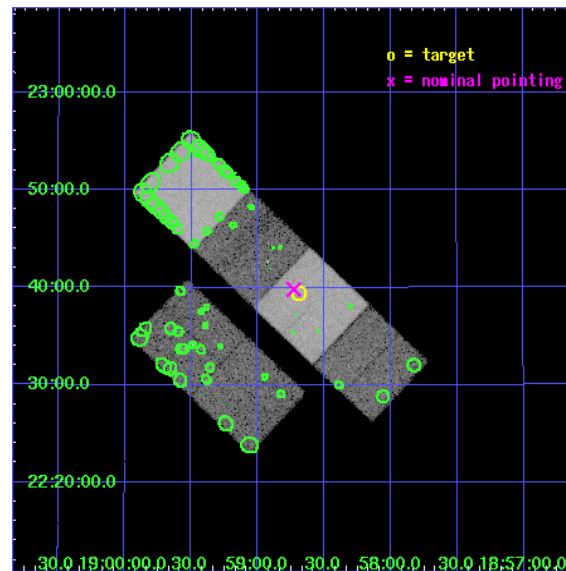
L2 Processing Date : Jul 20 2006

Contents

1	Front	2
2	OBI	3
2.1	OBI	3
2.1.1	Images	3
2.1.2	Bias	3
2.1.3	Parameters	4
2.1.4	Events	4
2.2	Compared Parameters	5
2.3	Aspect	6
2.4	Star Slots	9
2.4.1	Slot 3	9
2.4.2	Slot 4	10
2.4.3	Slot 5	11
2.4.4	Slot 6	12
2.4.5	Slot 7	13
2.5	FID Slots	14
2.5.1	Slot 0	14
2.5.2	Slot 1	15
2.5.3	Slot 2	16
3	Point Sources	17
A	Summary	18
A.1	Status	18
A.2	Comments	18

1 Front

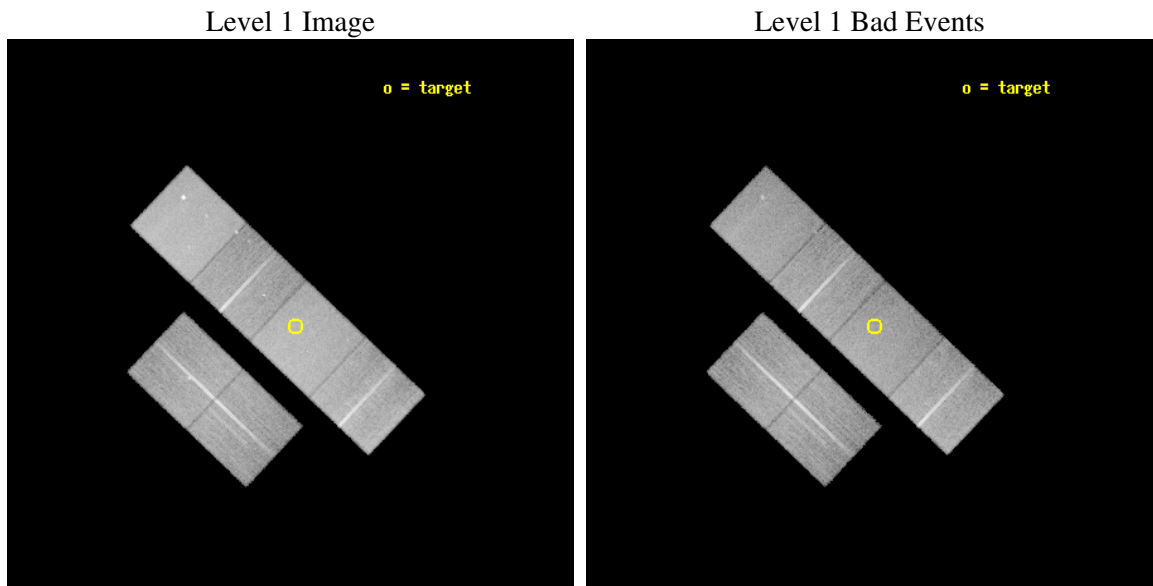
seq_num	400288
obs_id	3801
title	A SEARCH FOR X-RAY JETS IN QUIESCENT MICROQUASARS
observer	Dr. John Tomsick
object	XTE J1859+226
dtcycle	0
cycle	P
ra_targ	284.673333
dec_targ	22.658167
ra_nom	284.68208671436
dec_nom	22.663493104915
roll_nom	43.494441711555
revision	2
ontime	25110.399906456
livetime	24792.436903173
ontime2	25110.399906456
ontime3	25110.399906456
ontime5	25110.399906456
ontime6	25110.399906456
ontime7	25110.399906456
ontime8	25107.158926219
l2events	255780



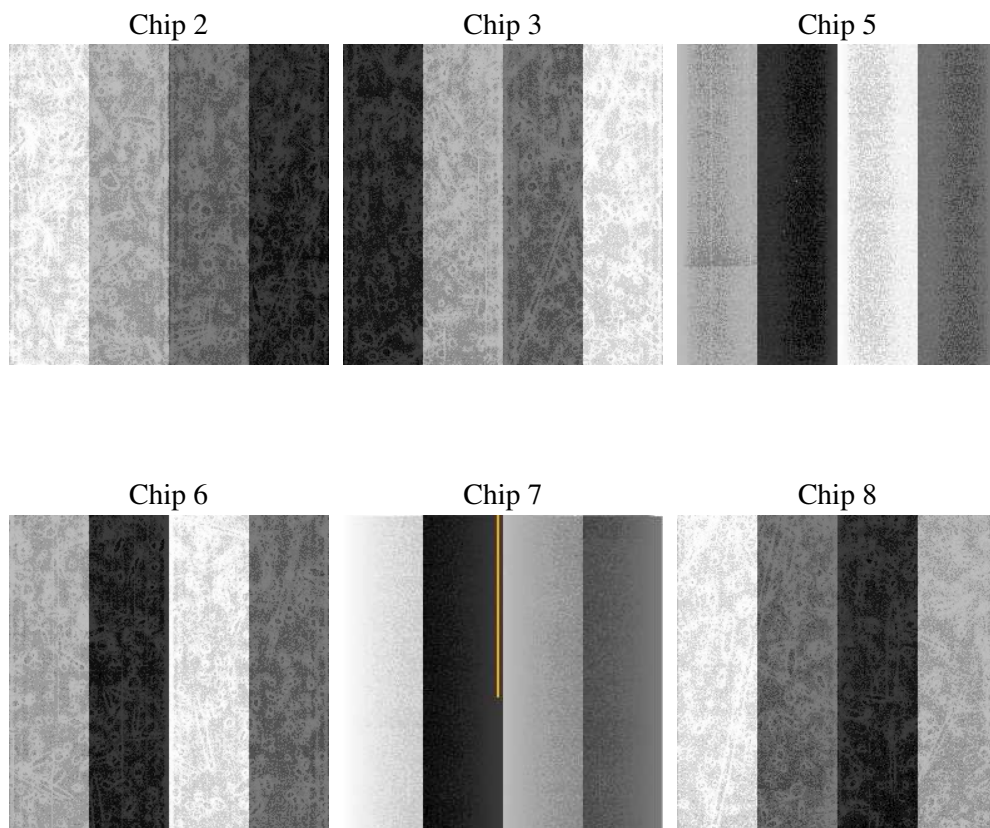
2 OBI

2.1 OBI

2.1.1 Images



2.1.2 Bias



2.1.3 Parameters

obi_num	0
ascdsver	7.6.8
caldsver	3.2.2
date	2006-07-20T19:50:22
revision	2

sched_exp_time	25357.773000
ontime	25117.749534339
ontime2	25117.749554276
ontime3	25117.749554276
ontime5	25117.749554276
ontime6	25117.749554276
ontime7	25117.749534339
ontime8	25114.508474439
l1events	1160804

2.1.4 Events

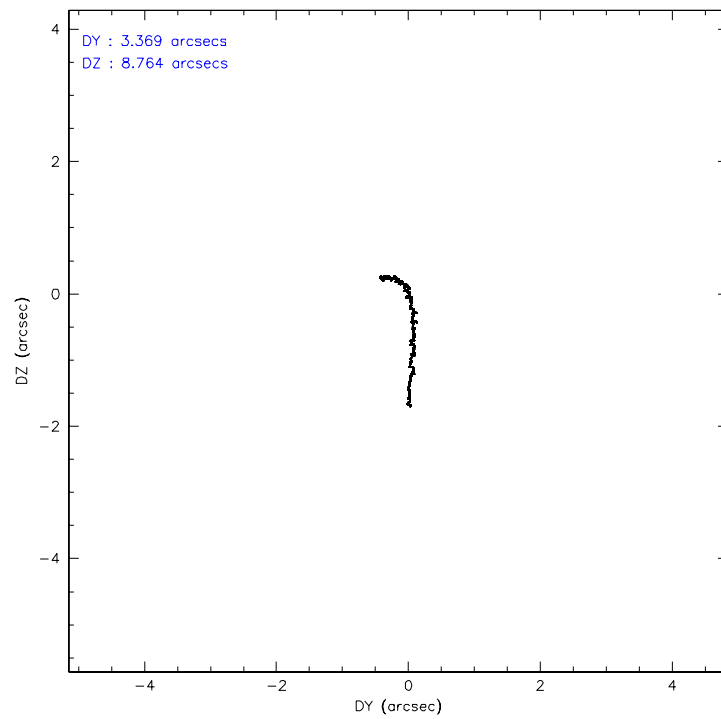
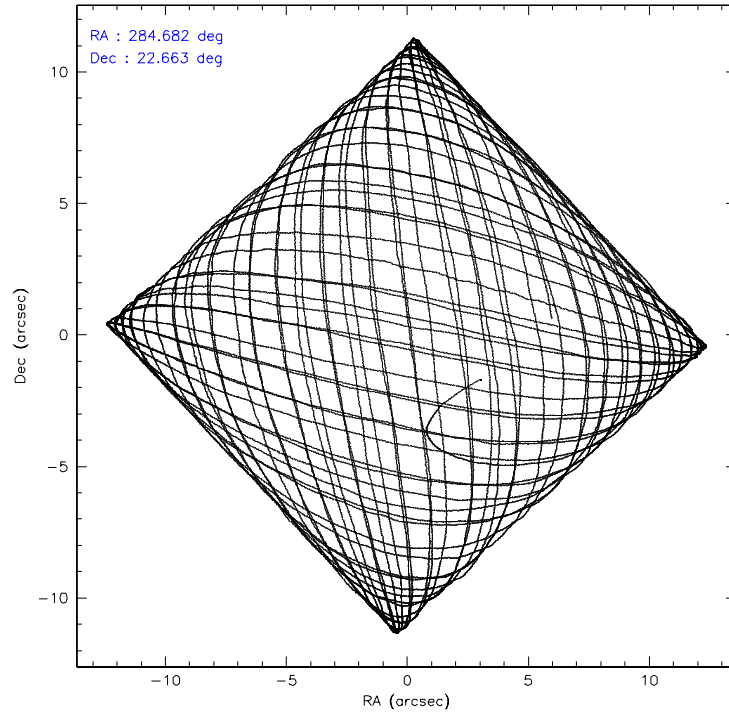
	ccd 2	ccd 3	ccd 5	ccd 6	ccd 7	ccd 8
level 1 events	170886	159252	239305	164971	219866	206524
rejected events	150268	140788	133885	145239	133574	165294
rejected %	87%	88%	55%	88%	60%	80%

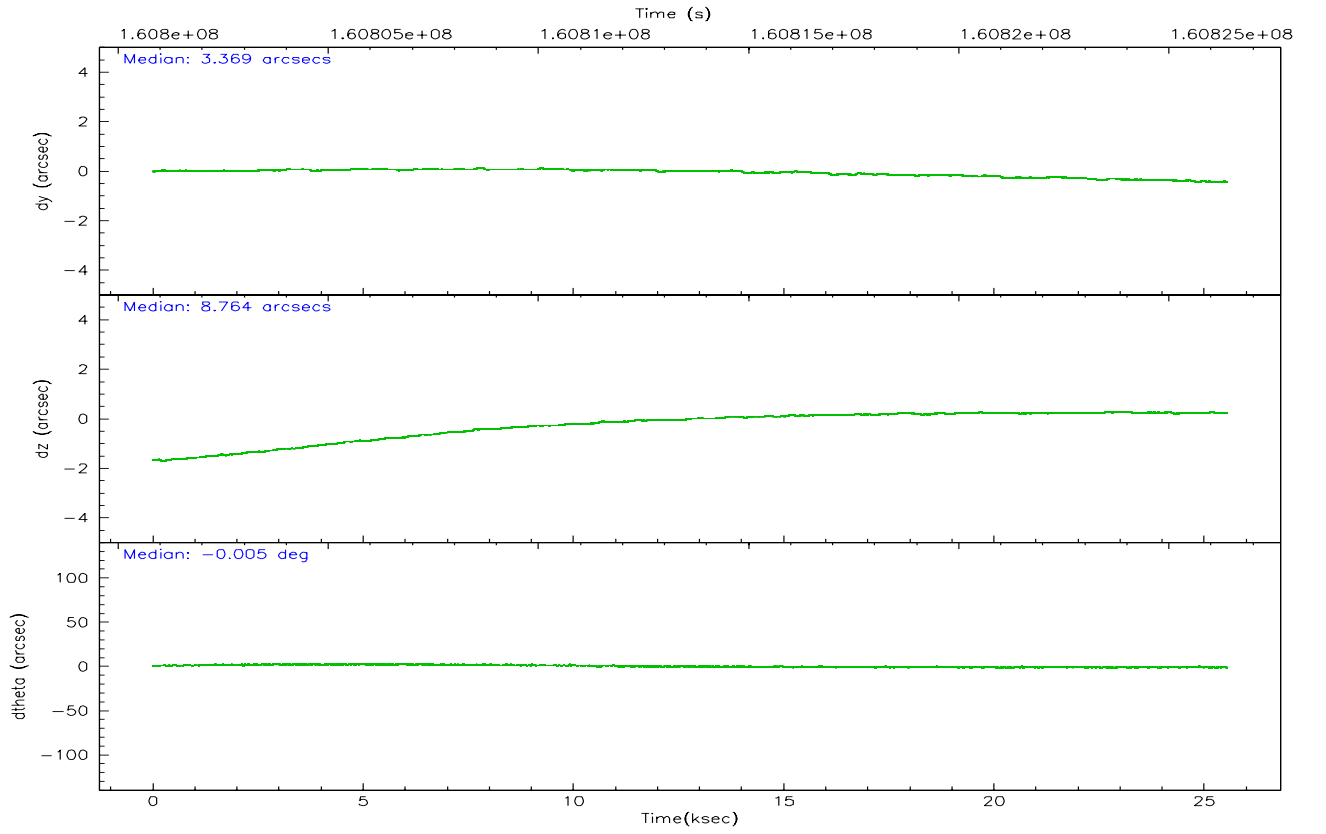
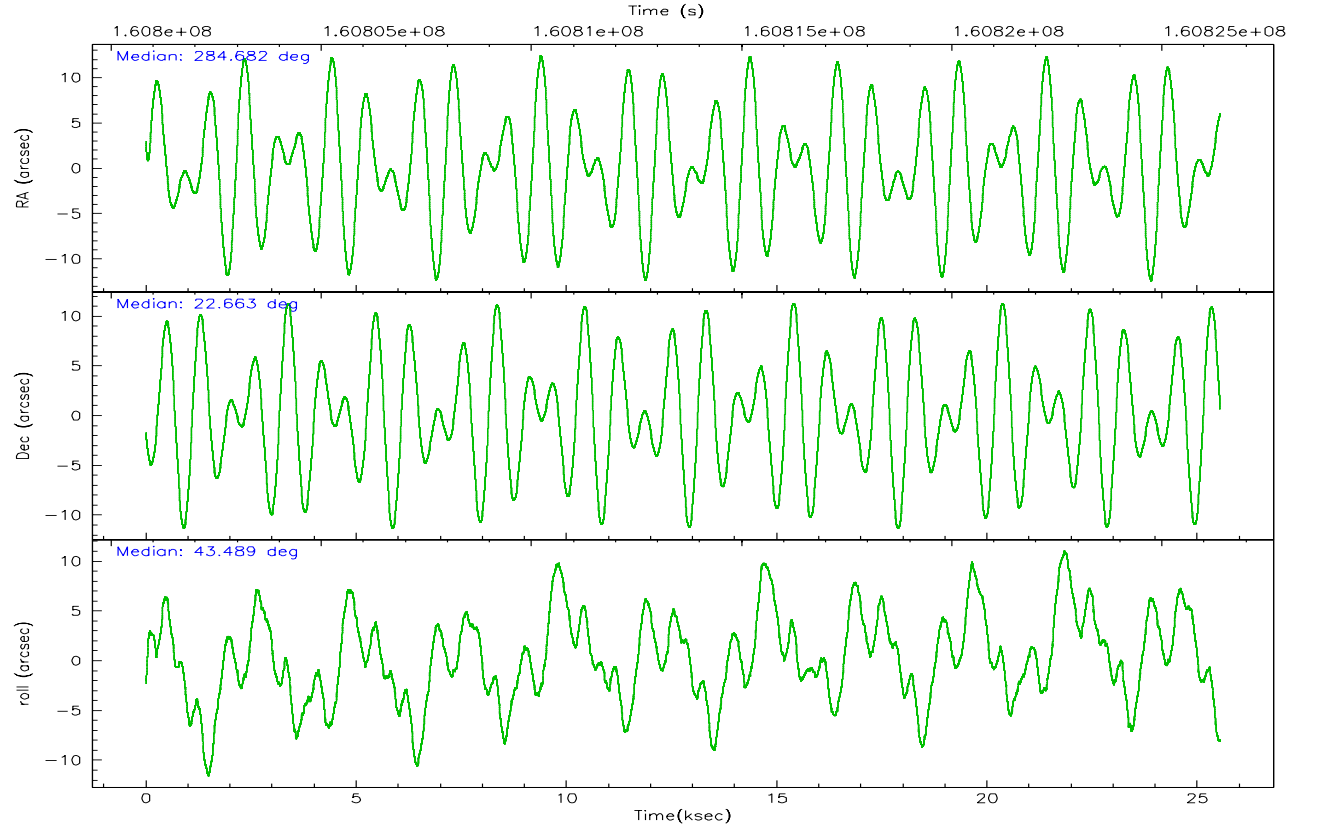
	ccd 2	ccd 3	ccd 5	ccd 6	ccd 7	ccd 8
grade 0 events	9752	8205	6753	8179	5182	13626
	5%	5%	2%	4%	2%	6%
grade 1 events	97	92	539	72	149	123
	0%	0%	0%	0%	0%	0%
grade 2 events	3965	3461	32556	3933	21389	8624
	2%	2%	13%	2%	9%	4%
grade 3 events	1932	1805	2528	1903	4538	4569
	1%	1%	1%	1%	2%	2%
grade 4 events	1820	1838	2548	1883	4465	4243
	1%	1%	1%	1%	2%	2%
grade 5 events	6390	6989	11704	7483	14789	9522
	3%	4%	4%	4%	6%	4%
grade 6 events	3155	3157	61061	3835	50738	10169
	1%	1%	25%	2%	23%	4%
grade 7 events	143775	133705	121616	137683	118616	155648
	84%	83%	50%	83%	53%	75%

2.2 Compared Parameters

Parameter	Planned	Actual	Parameter	Planned	Actual
Instrument	ACIS	ACIS	Obspar format version number	6	6
Detector	ACIS-235678	ACIS-235678	Obspar file type	PREDICTED	ACTUAL
Grating	NONE	NONE	Obspar update status	NONE	UPDATED
Data mode	FAINT	FAINT	On-chip summing requested	N	N
Observation mode	POINTING	POINTING	Subarray requested	NONE	NONE
Pointing RA	284.674079	284.6820867143604	Alternating exposures requested	N	N
Pointing Dec	22.637285	22.6634931049153	Primary exposure time	0.000000	3.2
Pointing Roll	43.340899	43.49444171155494			
SIM focus pos (mm)	-0.684267	-0.6828225247311905			
SIM defocus (mm)	0	0.001444936568705701			
SIM translation stage pos (mm)	-190.132523	-190.1400660498719			
SIM translation stage offset (mm)	0	0.00754346686406393			
Observation start time	160801022.184000	160800260.35682			
Observation start date	2003-02-05T02:55:58	2003-02-05T02:44:20			
Observation end time	160826379.184000	160826694.08293			
Observation end date	2003-02-05T09:58:35	2003-02-05T10:04:54			
Read mode	TIMED	TIMED			

2.3 Aspect



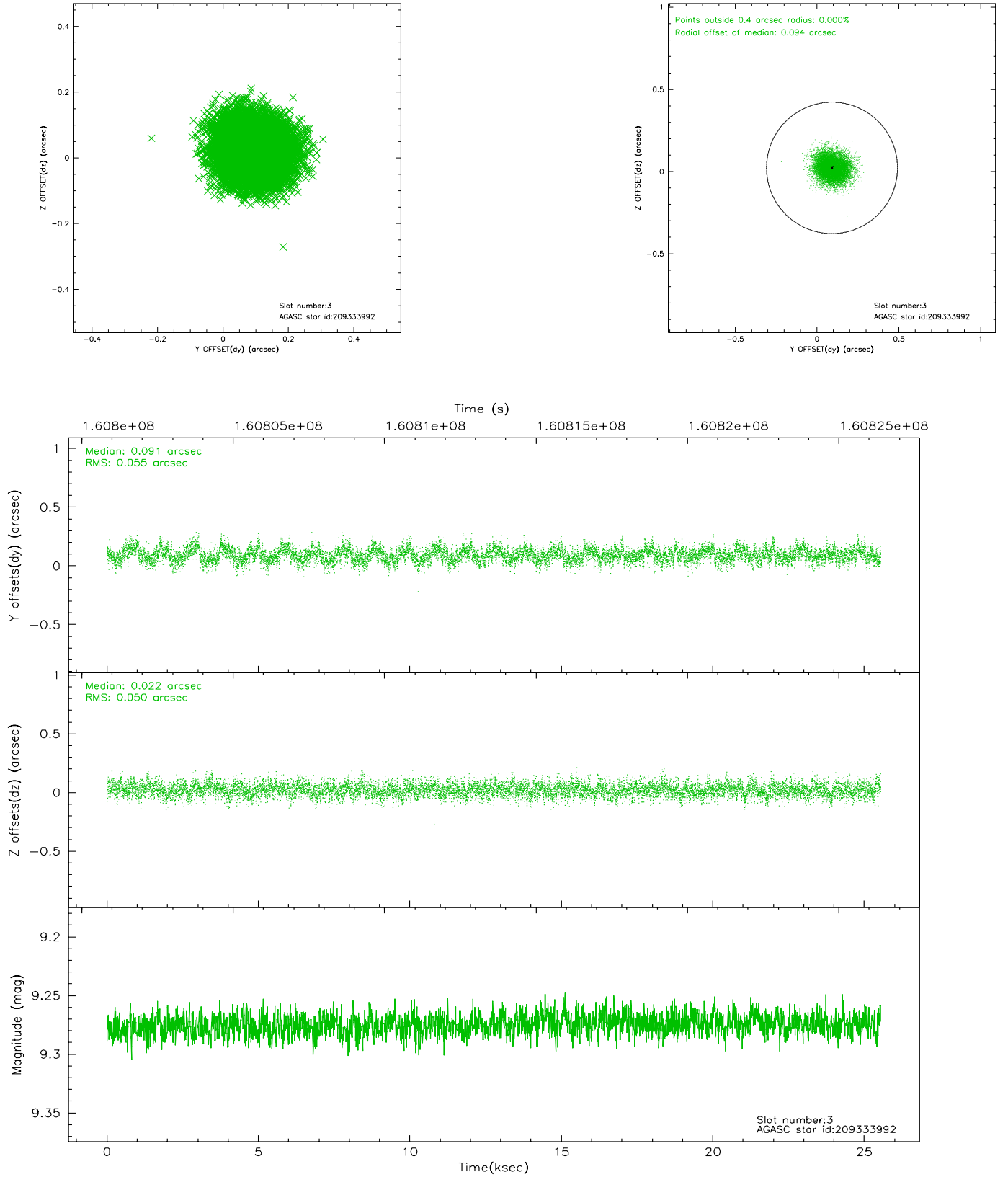


Slot Statistics

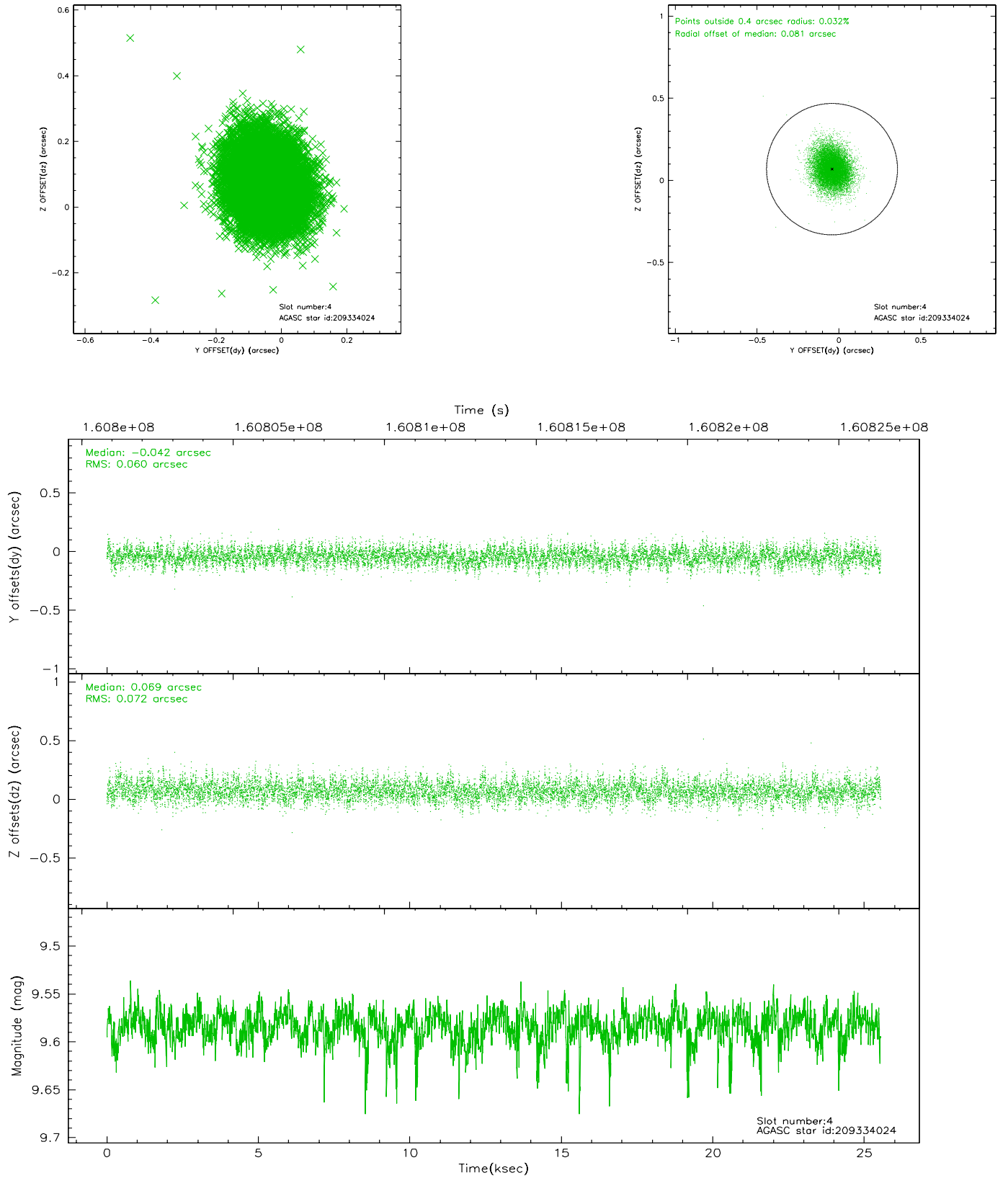
slot	status	id	mag	n_pts	med_dy	med_dz	dr1	dr2	ra	dec	mean_y	mean_z
0	FID	ACIS-S-1	7.20	6231	0.021	0.036	0.022	0.062	0.000000	0.000000	940.09	-1725.31
1	FID	ACIS-S-4	7.20	6231	-0.037	-0.030	0.013	0.038	0.000000	0.000000	2157.51	178.68
2	FID	ACIS-S-5	7.24	6231	-0.013	0.007	0.020	0.027	0.000000	0.000000	-1808.66	172.46
3	GUIDE	209333992	9.27	12452	0.091	0.022	0.080	0.129	284.593414	22.074724	-1585.88	-1288.05
4	GUIDE	209334024	9.58	12454	-0.042	0.069	0.098	0.162	285.130820	22.265139	188.42	-2017.07
5	GUIDE	278146728	9.54	12451	-0.078	0.053	0.115	0.186	285.180058	22.627003	1199.58	-1178.60
6	GUIDE	276449448	9.04	12455	0.048	-0.090	0.096	0.158	283.950863	22.680868	-1635.31	1766.99
7	GUIDE	276451912	8.89	12458	-0.019	-0.048	0.077	0.124	284.634202	23.205286	1307.39	1578.18

2.4 Star Slots

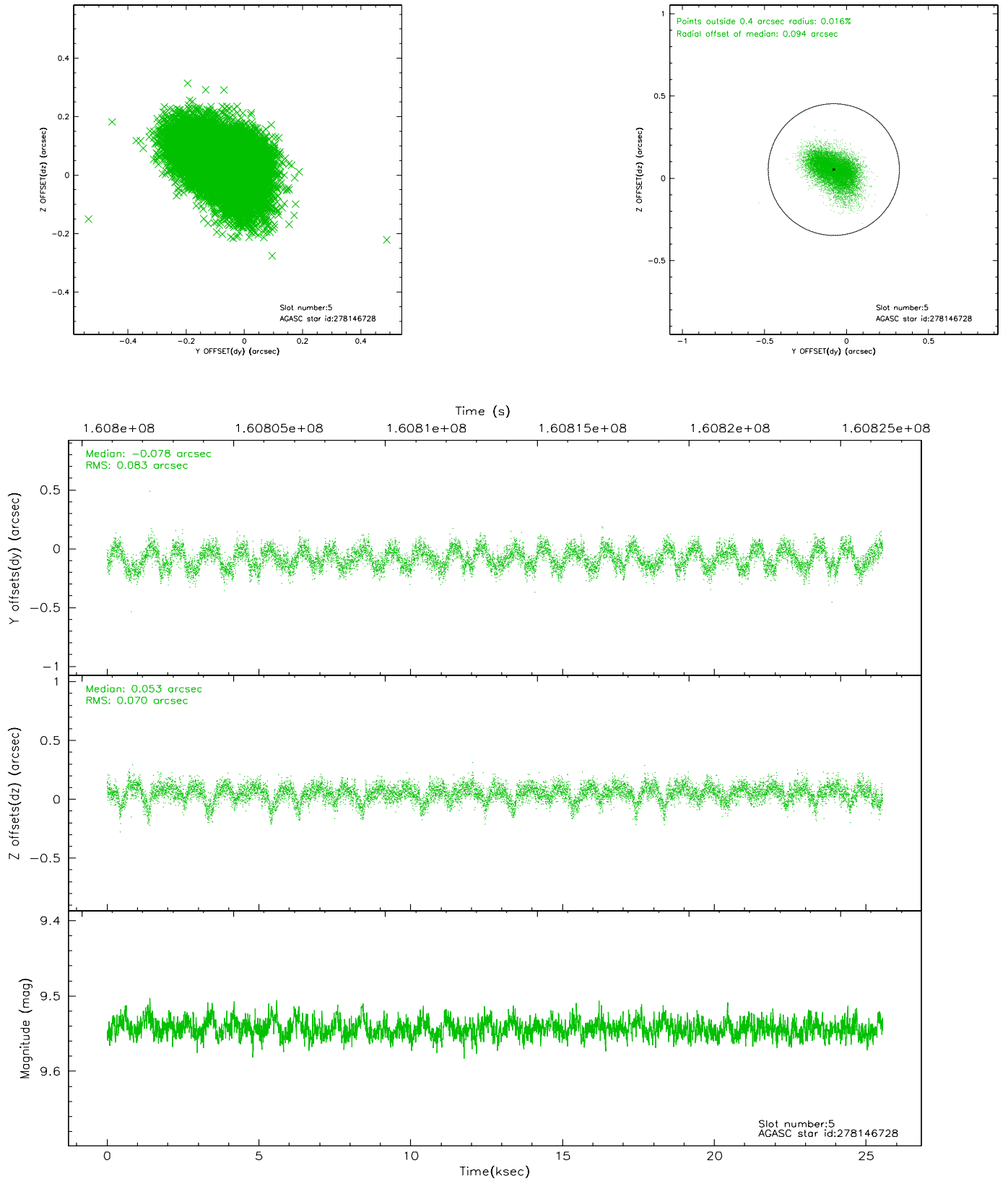
2.4.1 Slot 3



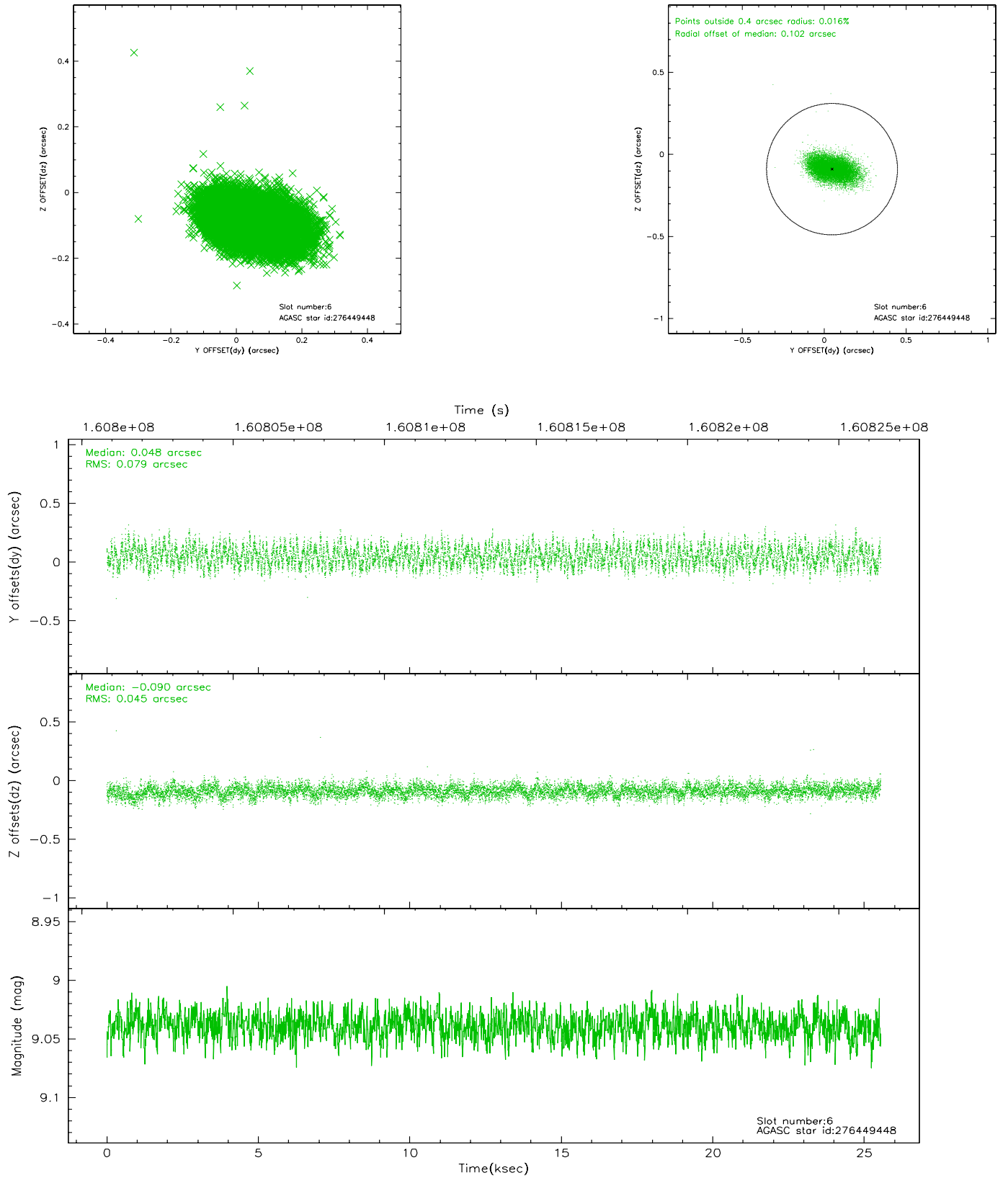
2.4.2 Slot 4



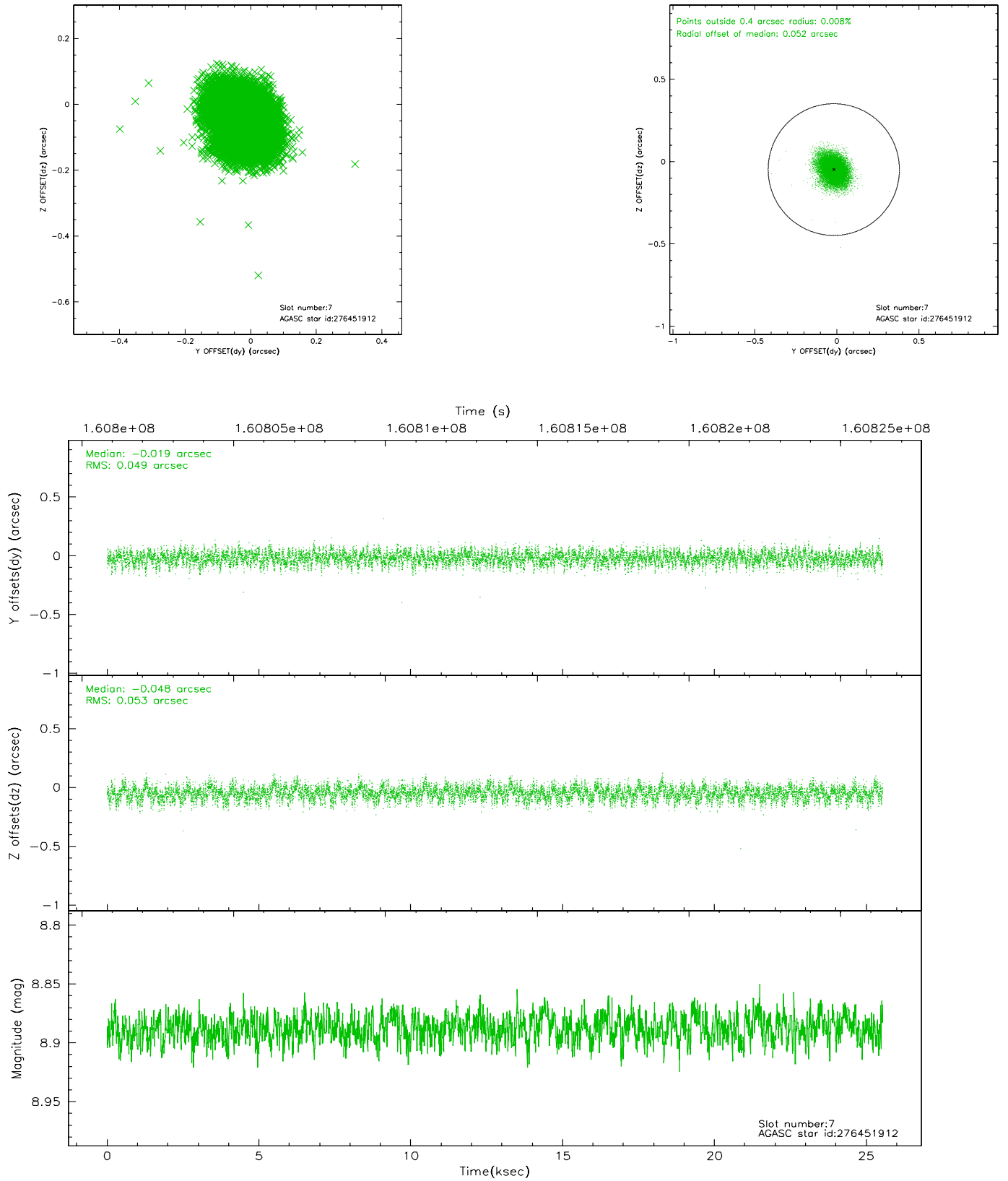
2.4.3 Slot 5



2.4.4 Slot 6

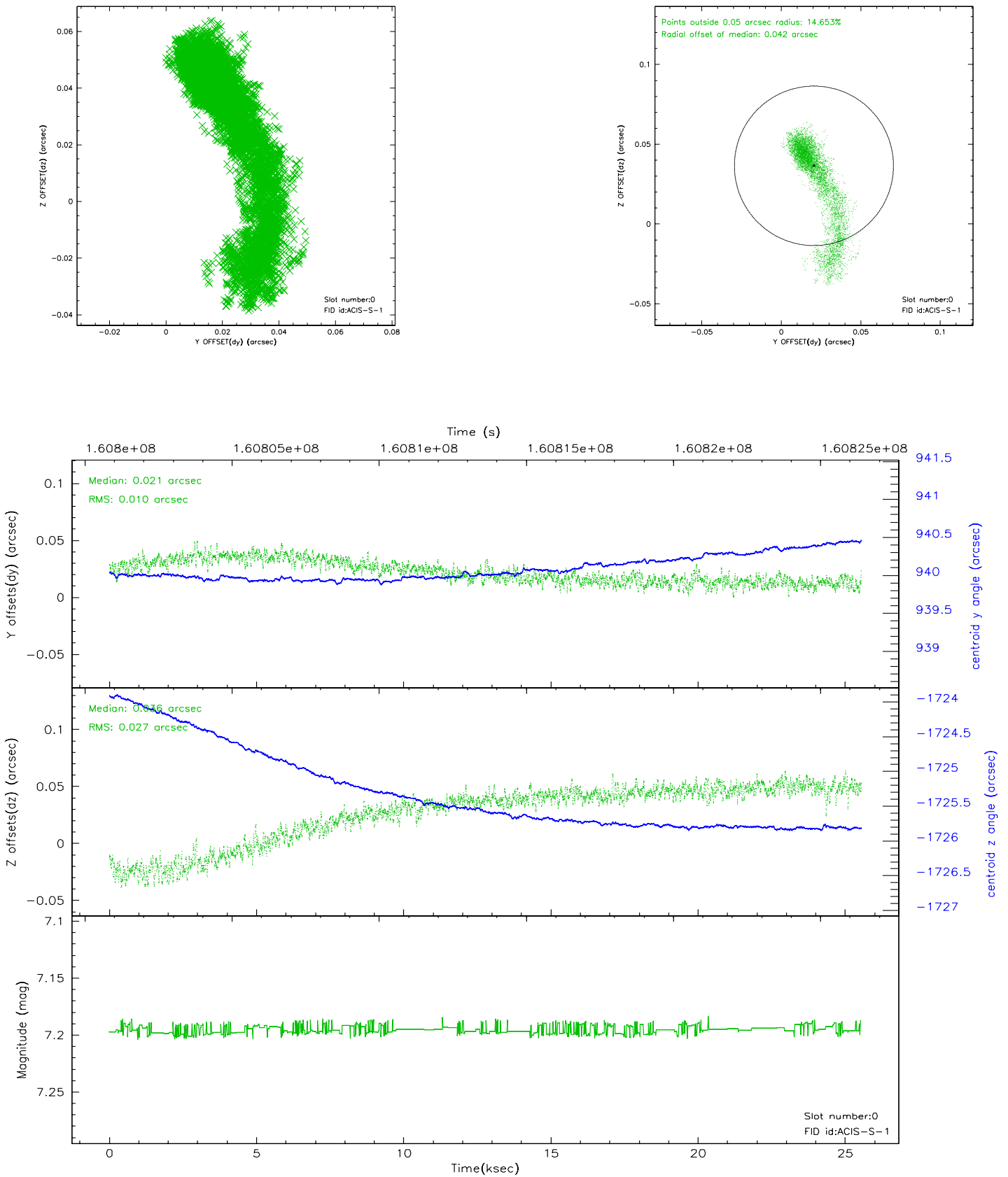


2.4.5 Slot 7

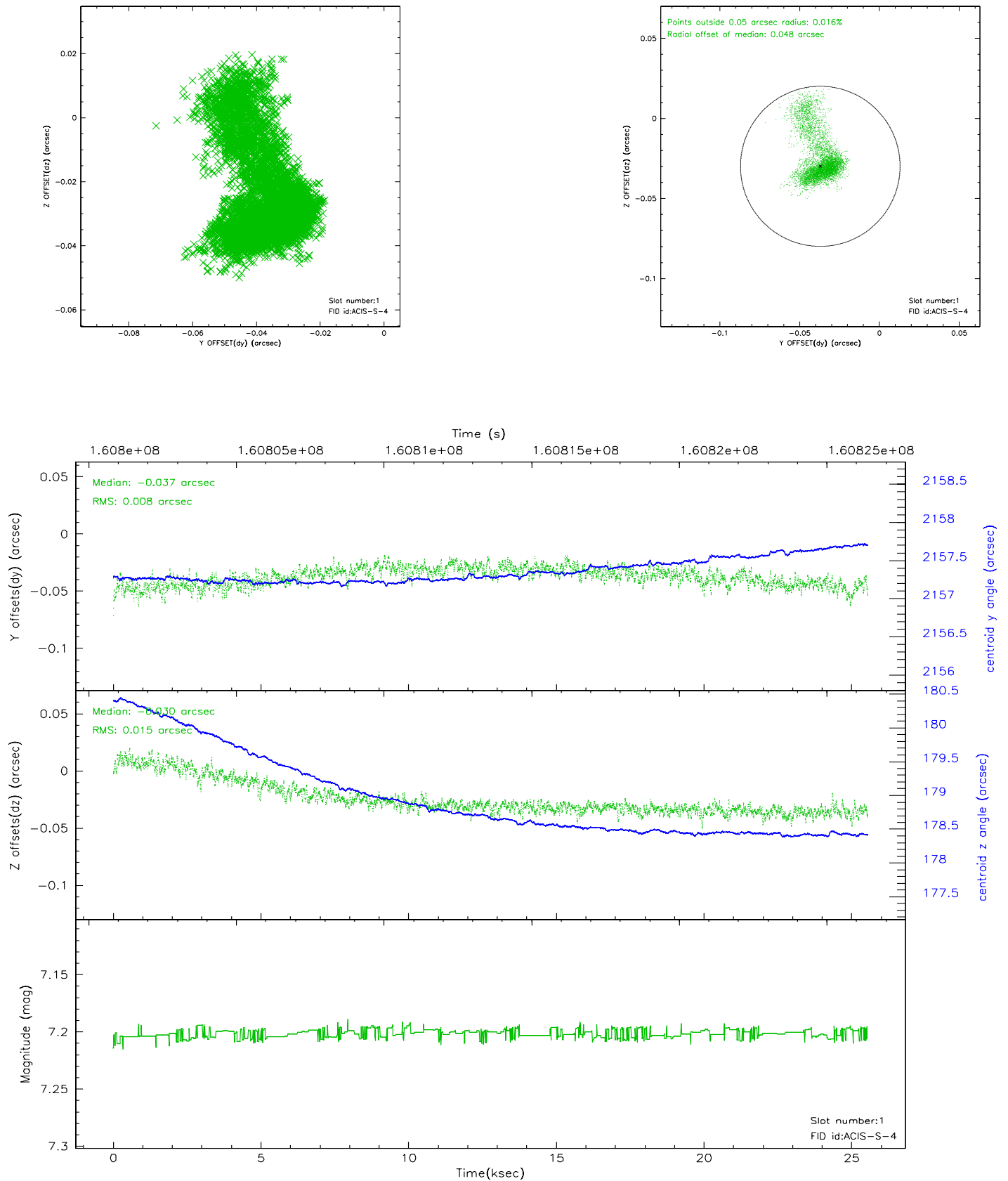


2.5 FID Slots

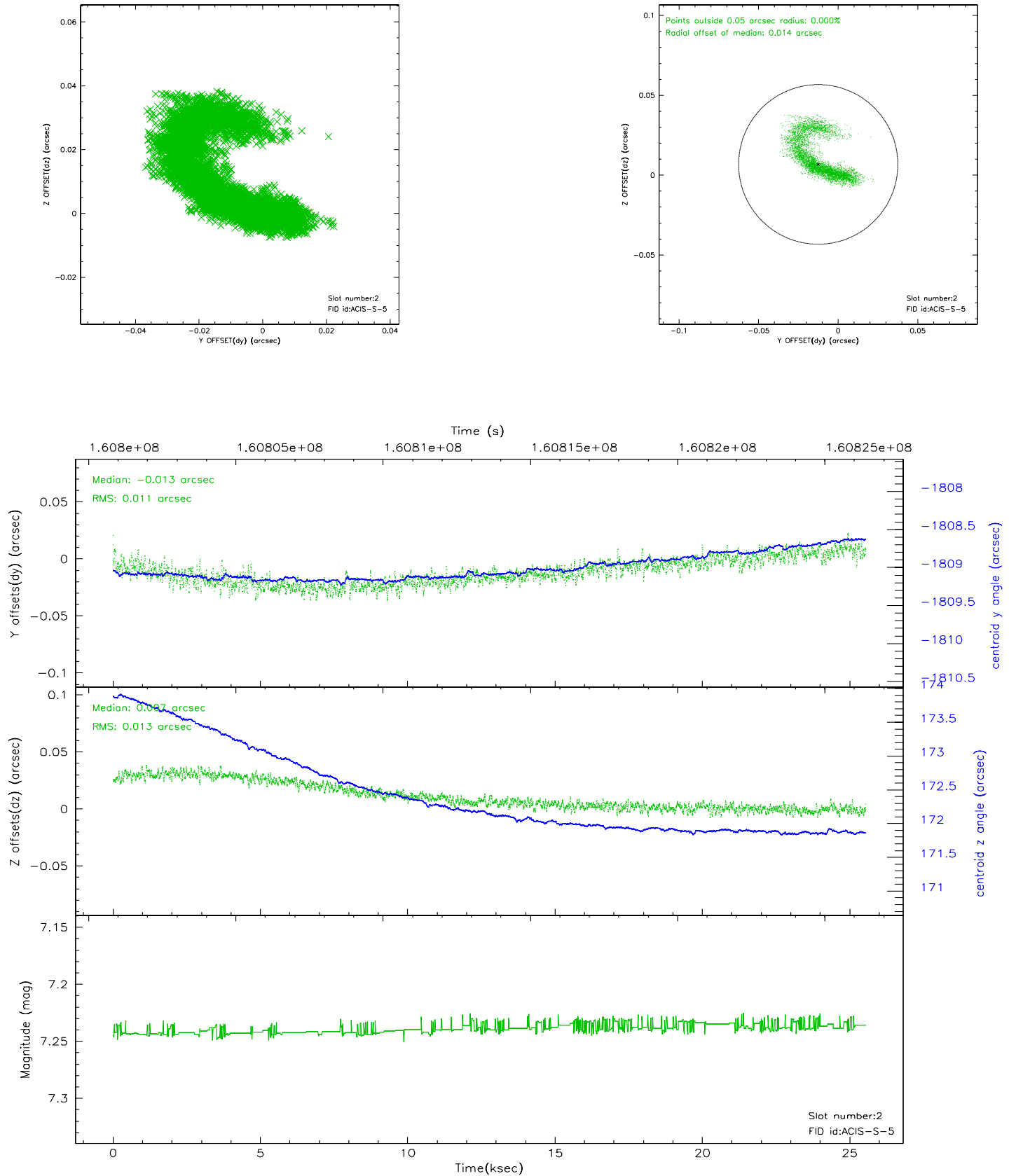
2.5.1 Slot 0



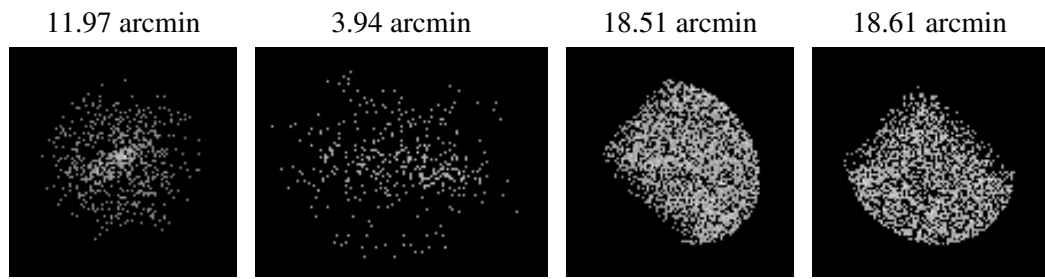
2.5.2 Slot 1



2.5.3 Slot 2



3 Point Sources



A Summary

A.1 Status

V&V Scientist	Joy Nichols
V&V Date (YYYY-MM-DD)	2006.07.21
V&V Edition	1
V&V Disposition and Status	OK
V&V Charge Time	25.113

A.2 Comments